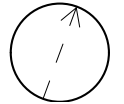
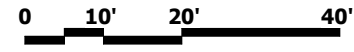


# 57 JFK STREET - CAMBRIDGE, MA

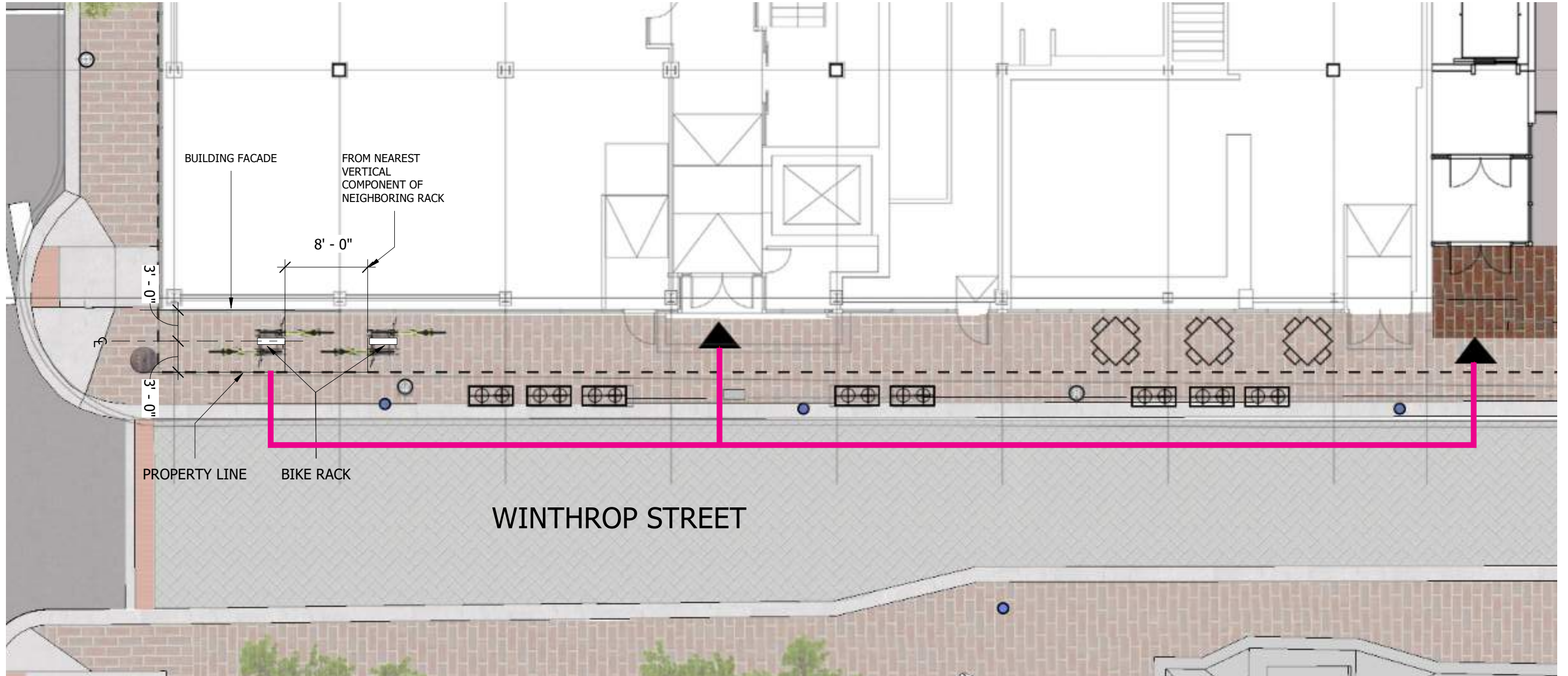
---

Supplemental Information - 07-13-2022

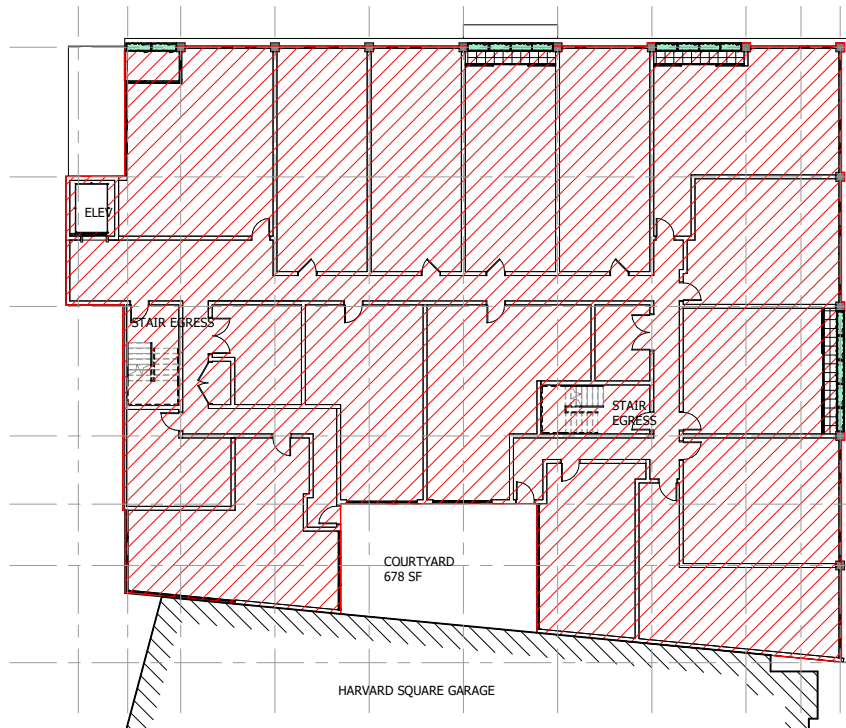
# SITE PLAN



# SHORT TERM BICYCLE PARKING DIAGRAM



# GROSS CALCULATION



**3RD FLOOR**

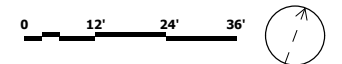


**4TH FLOOR**

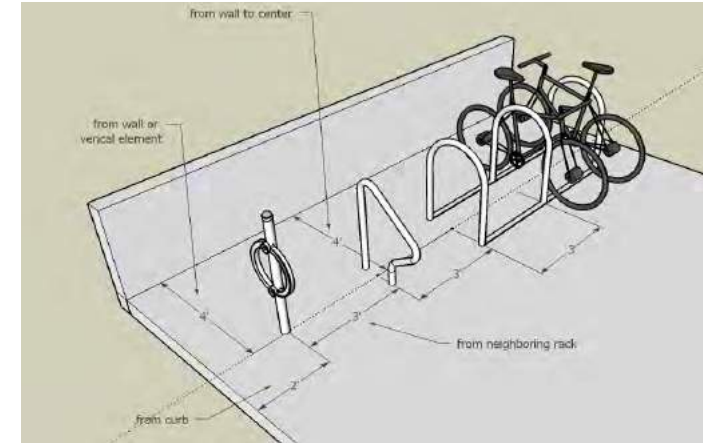
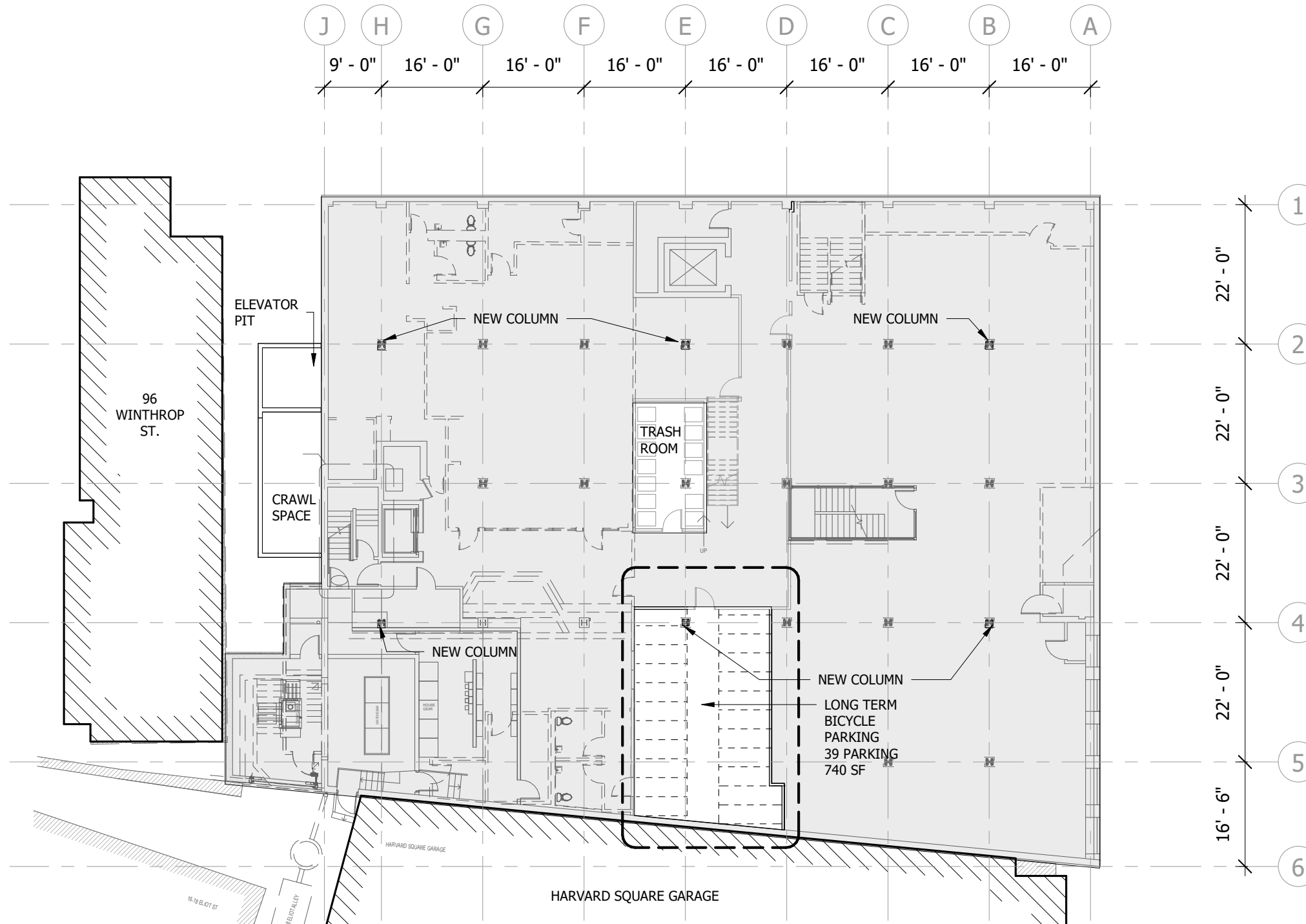


**5TH FLOOR**

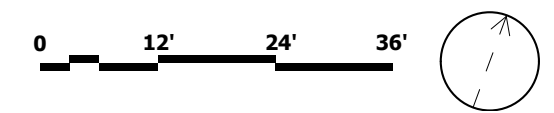
AREAS_FLOOR GROSS	
Name	Area
5TH FLOOR GSF	8,621 SF
4TH FLOOR GSF	10,005 SF
3RD FLOOR GSF	11,525 SF
Grand total	30,150 SF



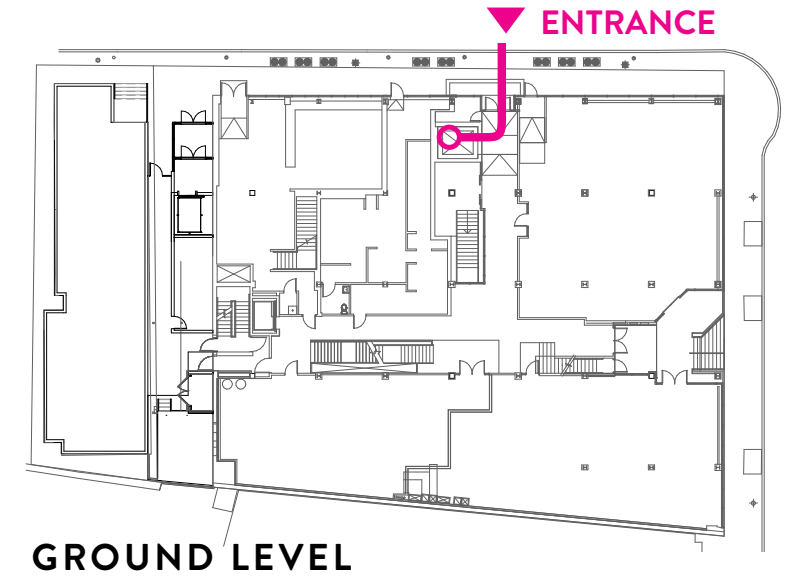
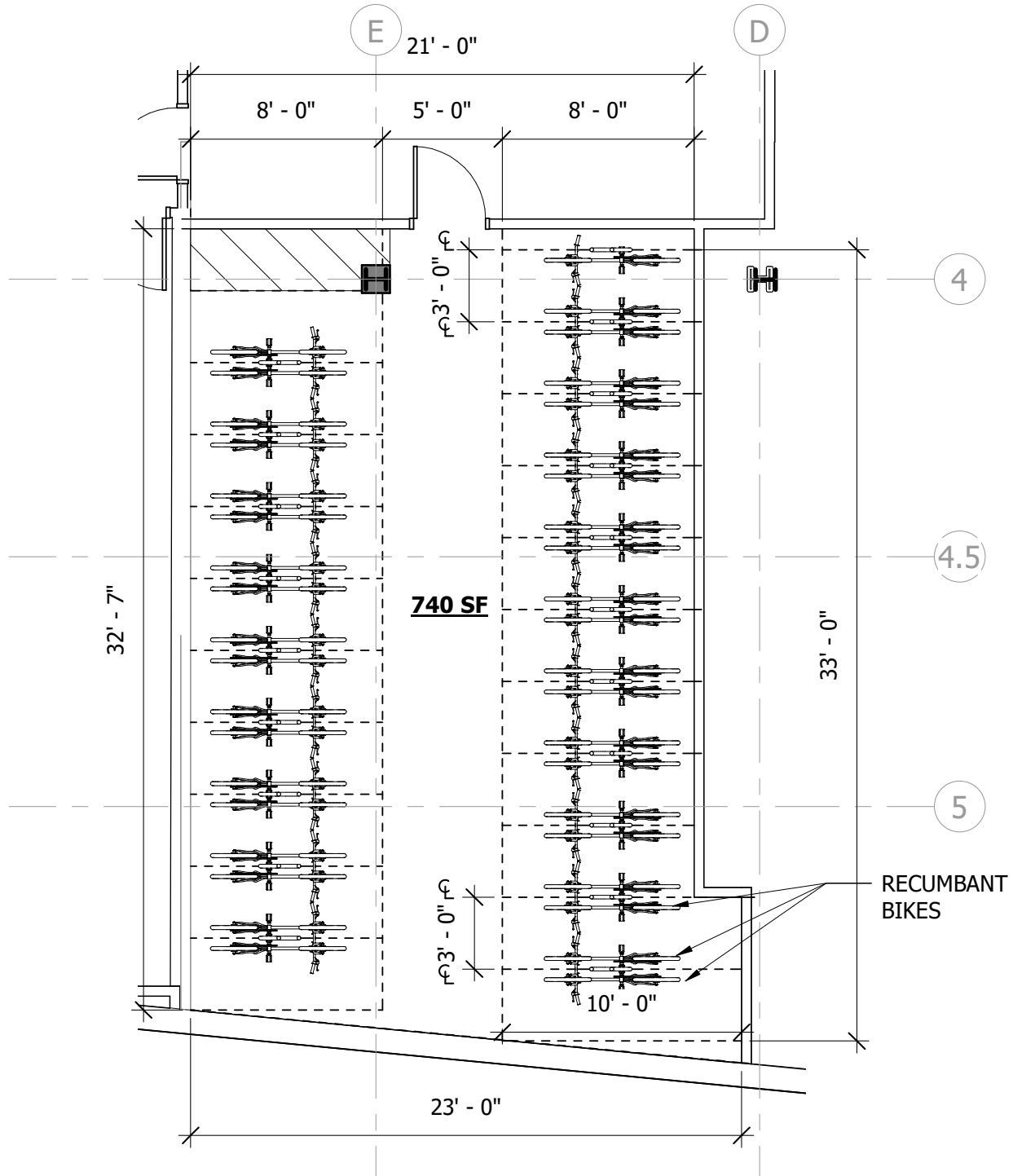
# LONG TERM BIKE PARKING PLAN @ BASEMENT



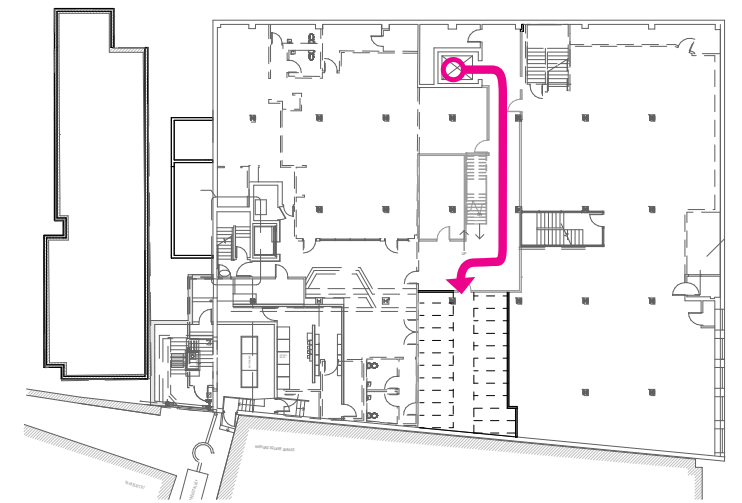
**Bicycle Rack Types and Clearances**



# LONG TERM BIKE PARKING PLAN @ BASEMENT

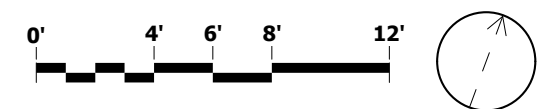


GROUND LEVEL

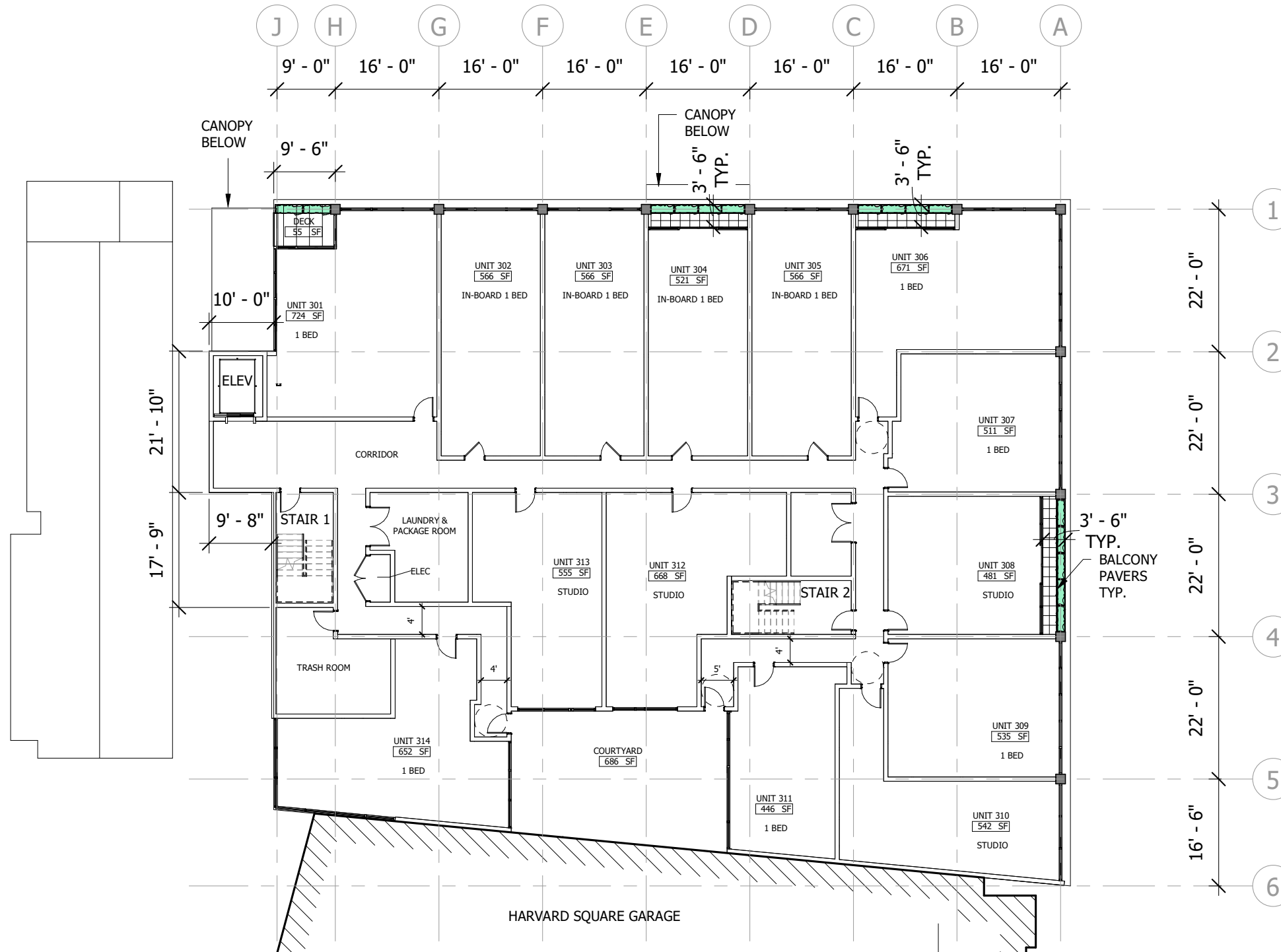


BASEMENT

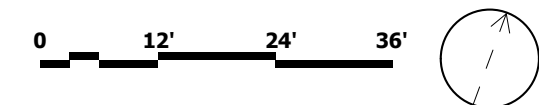
LONG TERM BIKE PARKING		
LEVEL	APARTMENT UNIT	BIKE PARKING COUNT
3-5	0	0
BASEMENT	-	39
<b>TOTAL</b>		<b>39</b>



# 3RD LEVEL FLOOR PLAN



UNITS SUMMARY	
UNIT	
1 BED	15
2 BED	2
IN-BOARD 1 BED	7
STUDIO	14
Total Residential Units: 38	

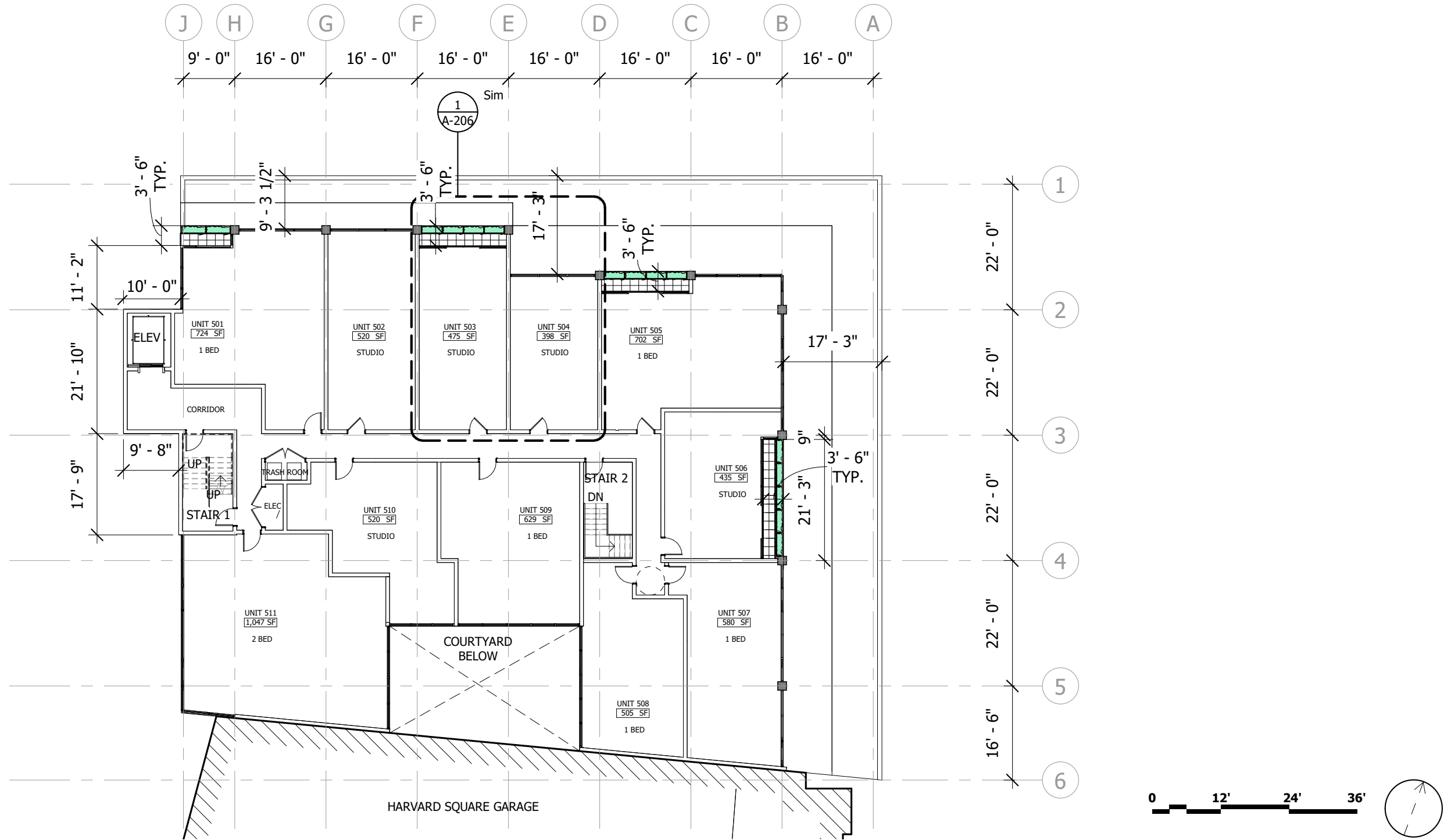


# 4TH LEVEL FLOOR PLAN



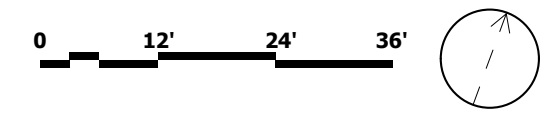


# 5TH LEVEL FLOOR PLAN



# NET. FLOOR AREA 3RD LEVEL

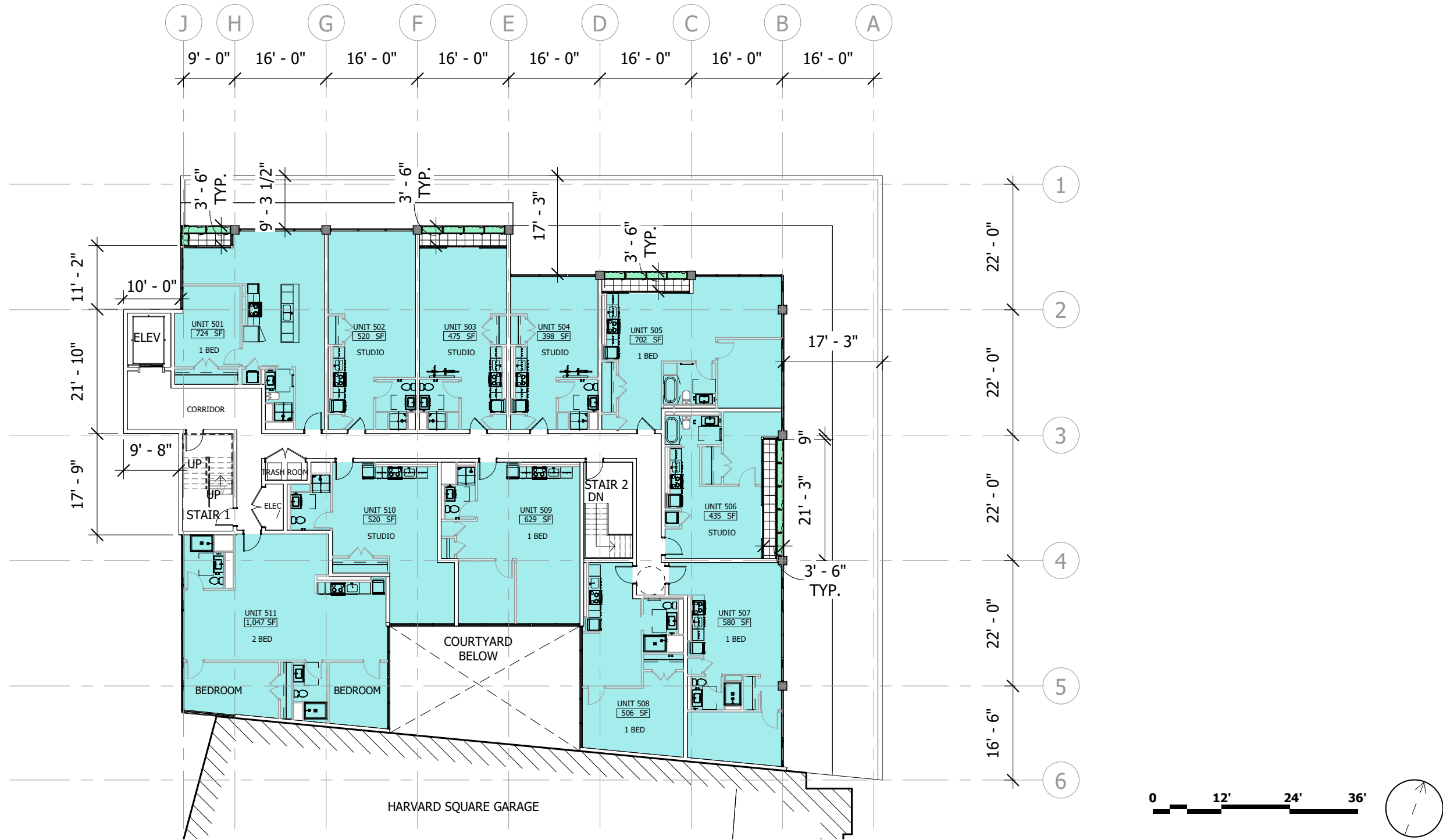
FLOOR AREA NET.		
Name	Type	Area
UNIT 301	1 BED	730
UNIT 302	IN-BOARD 1 BED	566
UNIT 303	IN-BOARD 1 BED	566
UNIT 304	IN-BOARD 1 BED	521
UNIT 305	IN-BOARD 1 BED	566
UNIT 306	1 BED	671
UNIT 307	1 BED	511
UNIT 308	STUDIO	481
UNIT 309	1 BED	535
UNIT 310	STUDIO	542
UNIT 311	1 BED	446
UNIT 312	STUDIO	668
UNIT 313	STUDIO	555
UNIT 314	1 BED	652
UNIT 401	1 BED	855
UNIT 402	IN-BOARD 1 BED	537
UNIT 403	IN-BOARD 1 BED	581
UNIT 404	IN-BOARD 1 BED	520
UNIT 405	STUDIO	475
UNIT 406	1 BED	726
UNIT 407	STUDIO	413
UNIT 408	STUDIO	362
UNIT 409	STUDIO	458
UNIT 410	1 BED	431
UNIT 411	1 BED	629
UNIT 412	STUDIO	520
UNIT 413	2 BED	1,047
UNIT 501	1 BED	724
UNIT 502	STUDIO	520
UNIT 503	STUDIO	475
UNIT 504	STUDIO	398
UNIT 505	1 BED	702
UNIT 506	STUDIO	435
UNIT 507	1 BED	580
UNIT 508	1 BED	506
UNIT 509	1 BED	629
UNIT 510	STUDIO	520
UNIT 511	2 BED	1,047
Grand total: 38		22,099



# NET. FLOOR AREA 4TH LEVEL



# NET. FLOOR AREA 5TH LEVEL



Terrace



Terrace



Entry View



Winthrop St.





## STATISTICS

UNITS SUMMARY	
UNIT	
1 BED	
15	
2 BED	
2	
IN-BOARD 1 BED	
7	
STUDIO	
14	
Total Residential Units: 38	

UNITS AREA SCHEDULE		
Type	Name	Area
STUDIO		
STUDIO	UNIT 308	481
STUDIO	UNIT 310	542
STUDIO	UNIT 312	668
STUDIO	UNIT 313	555
STUDIO	UNIT 405	475
STUDIO	UNIT 407	413
STUDIO	UNIT 408	362
STUDIO	UNIT 409	458
STUDIO	UNIT 412	520
STUDIO	UNIT 502	520
STUDIO	UNIT 503	475
STUDIO	UNIT 504	398
STUDIO	UNIT 506	435
STUDIO	UNIT 510	520
IN-BOARD 1 BED		
IN-BOARD 1 BED	UNIT 302	566
IN-BOARD 1 BED	UNIT 303	566
IN-BOARD 1 BED	UNIT 304	521
IN-BOARD 1 BED	UNIT 305	566
IN-BOARD 1 BED	UNIT 402	537
IN-BOARD 1 BED	UNIT 403	581
IN-BOARD 1 BED	UNIT 404	520

UNITS AREA SCHEDULE		
Type	Name	Area
2 BED		
2 BED	UNIT 413	1047
2 BED	UNIT 511	1047
1 BED		
1 BED	UNIT 301	724
1 BED	UNIT 306	671
1 BED	UNIT 307	511
1 BED	UNIT 309	535
1 BED	UNIT 311	446
1 BED	UNIT 314	652
1 BED	UNIT 401	855
1 BED	UNIT 406	726
1 BED	UNIT 410	431
1 BED	UNIT 411	629
1 BED	UNIT 501	724
1 BED	UNIT 505	702
1 BED	UNIT 507	580
1 BED	UNIT 508	505
1 BED	UNIT 509	629