

The Public Health Response to the COVID-19 Pandemic in Cambridge

COVID-19 WEEKLY REPORT

CAMBRIDGE CITY COUNCIL

NOVEMBER 23, 2020



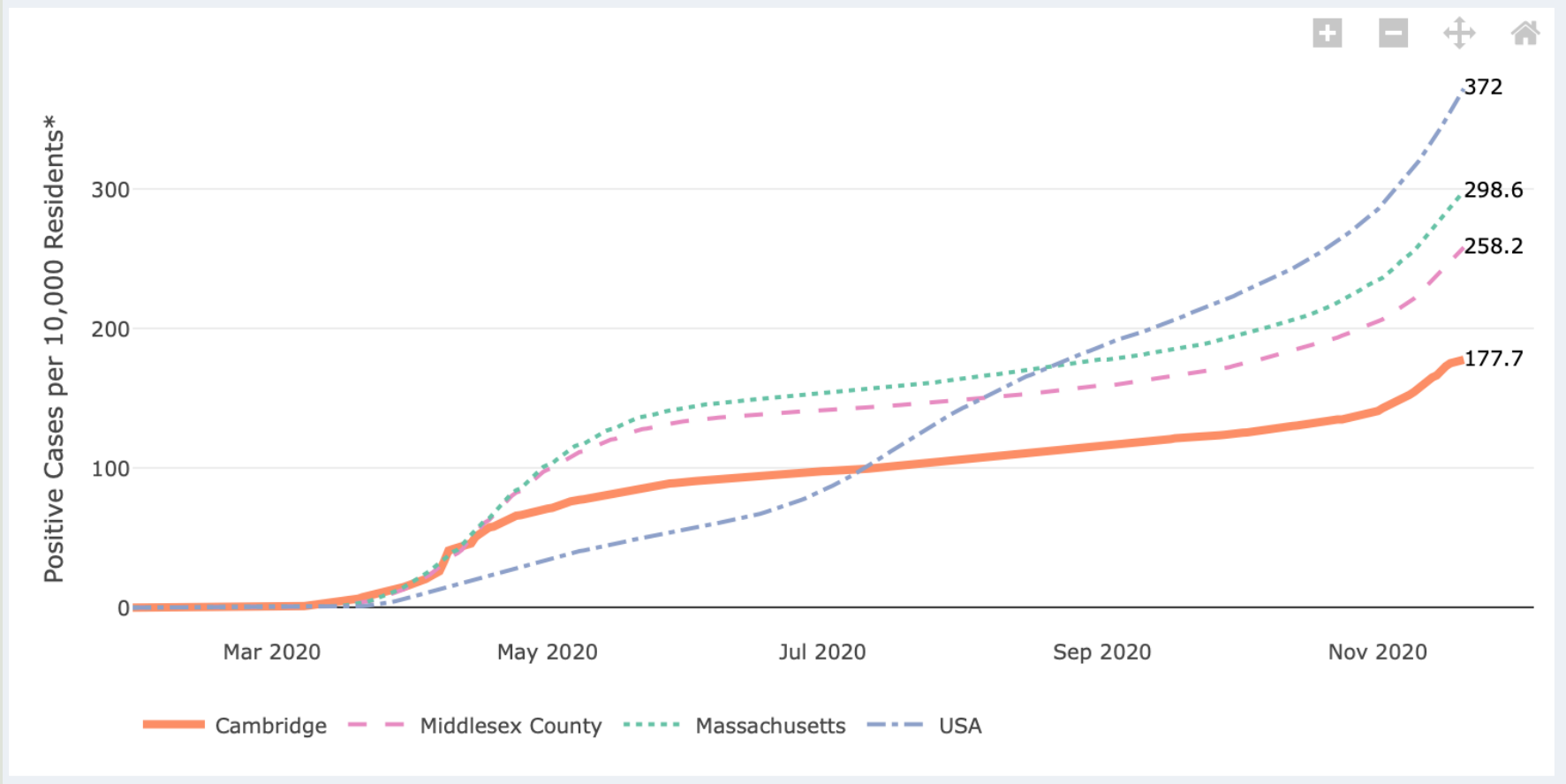
Cambridge
Public Health
Department



CHA Cambridge
Health Alliance



COVID-19 Cases Among People Living in Cambridge, Middlesex County, Massachusetts, and the U.S



The graph helps illustrate how the pandemic is progressing here in Cambridge compared to other geographies. Data for the county, state, and United States in this graph are procured daily from Johns Hopkins University. Data current as of 11/22/20.

Massachusetts Cities Comparison

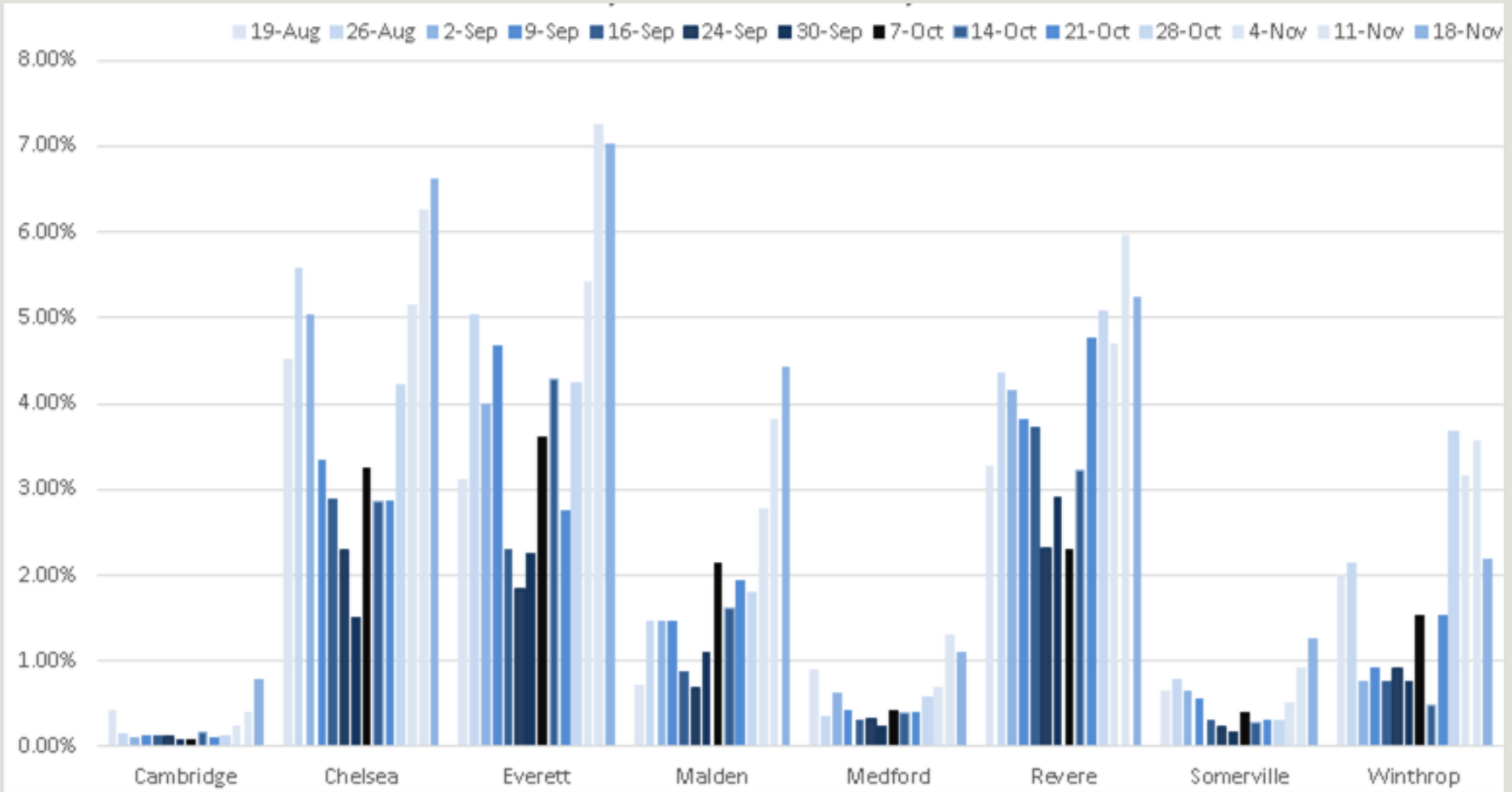
City/Town	Average Daily Incident Rate per 100,000 (14 days*)	
	November 12 Report	November 19 Report
Boston	23.1	31.5
Cambridge	8.9	17.4
Lowell	42.1	64.2
Newton	6.2	9.1
Somerville	16.6	26.5
Springfield	35.2	51.1
Worcester	22.3	37.8
State	20.7	29.4

*14-day period reflects 10/25/20-11/7/20 (Nov. 12 Report) and 11/1/20-11/14/20 (Nov. 19 Report)
 Source: Massachusetts Department of Public Health Weekly COVID-19 Data Reports

Risk Level Guidance

Population			
Group	Under 10K	10K-50K	Over 50K
Grey	Less than or equal to 10 total cases	Less than or equal to 10 total cases	Less than or equal to 15 total cases
Green	Less than or equal to 15 total cases	<10 avg cases/100k AND >10 total cases	<10 avg cases/100k AND >15 total cases
Yellow	Less than or equal to 25 total cases	≥10 avg cases/100k OR ≥5% pos rate	≥10 avg cases/100k OR ≥ 4% pos rate
Red	More than 25 total cases	≥10 avg cases/100k AND ≥5% pos rate	≥10 avg cases/100k AND ≥4% pos rate

Testing Positivity Rates in CHA Communities (August to Present)



Note: Each bar represents the number of positive PCR tests among residents in a community divided by the number of tests administered to residents in that community during a 14-day period.

Source: Graphic created by Cambridge Health Alliance based on data in the [Massachusetts Department of Public Health's weekly COVID-19 data reports](#).



Current Data

- **2,041** confirmed, probable, and suspect cases¹
 - 1,767 in the community
 - 274 in nursing homes and assisted living
 - 100 deaths

(NOTE: Nursing home/assisted living and death counts holding steady for many weeks)

- **1,225** recoveries; **440** active cases¹
- Average daily incidence rate of confirmed cases in last 7 days²: **17.3 per 100,000 residents**

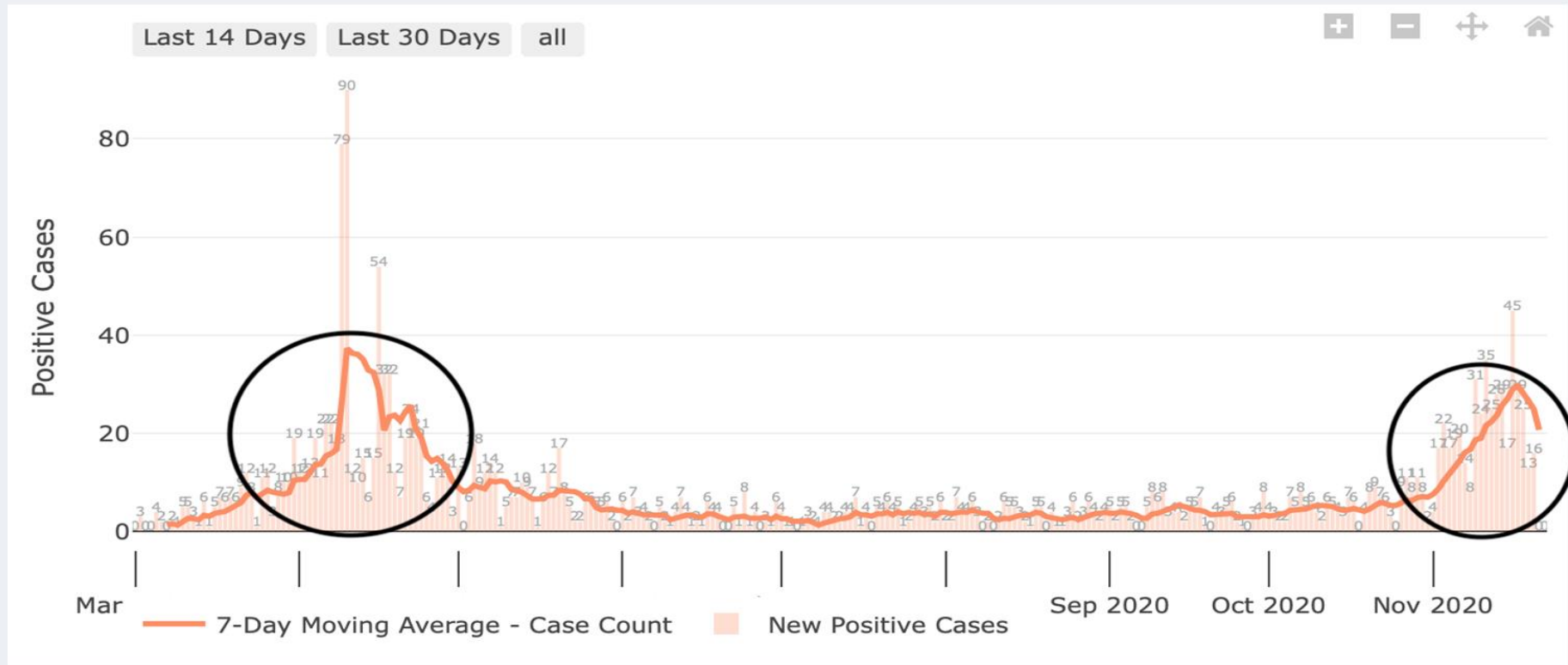
¹ Data current as of Nov. 23, 2020, 10 a.m.

² 7-day period reflects 11/16/20 - 11/22/20.

New Cambridge Cases: Mar - Nov

Dark orange line = 7-day Moving Average (case count)
Vertical orange lines/bars = New Positive Cases

New Cases



COVID-19 Community Testing

ALL TESTING SITES

312,540 Tests since March 2¹ | **50,947 Tests** in past 14 days²

Tests administered to Cambridge residents at any health care or city site.

CITY-FUNDED TESTING PROGRAM

- Testing offered **7 days a week**, starting Nov. 9.
- Sites in East Cambridge, Harvard Square, North Cambridge, and The Port.
- **30,276** tests administered since April.
 - 12,116 from Nov. 1–22 (*additional data pending*)
 - Additional site added Nov. 23 to accommodate increased demand.

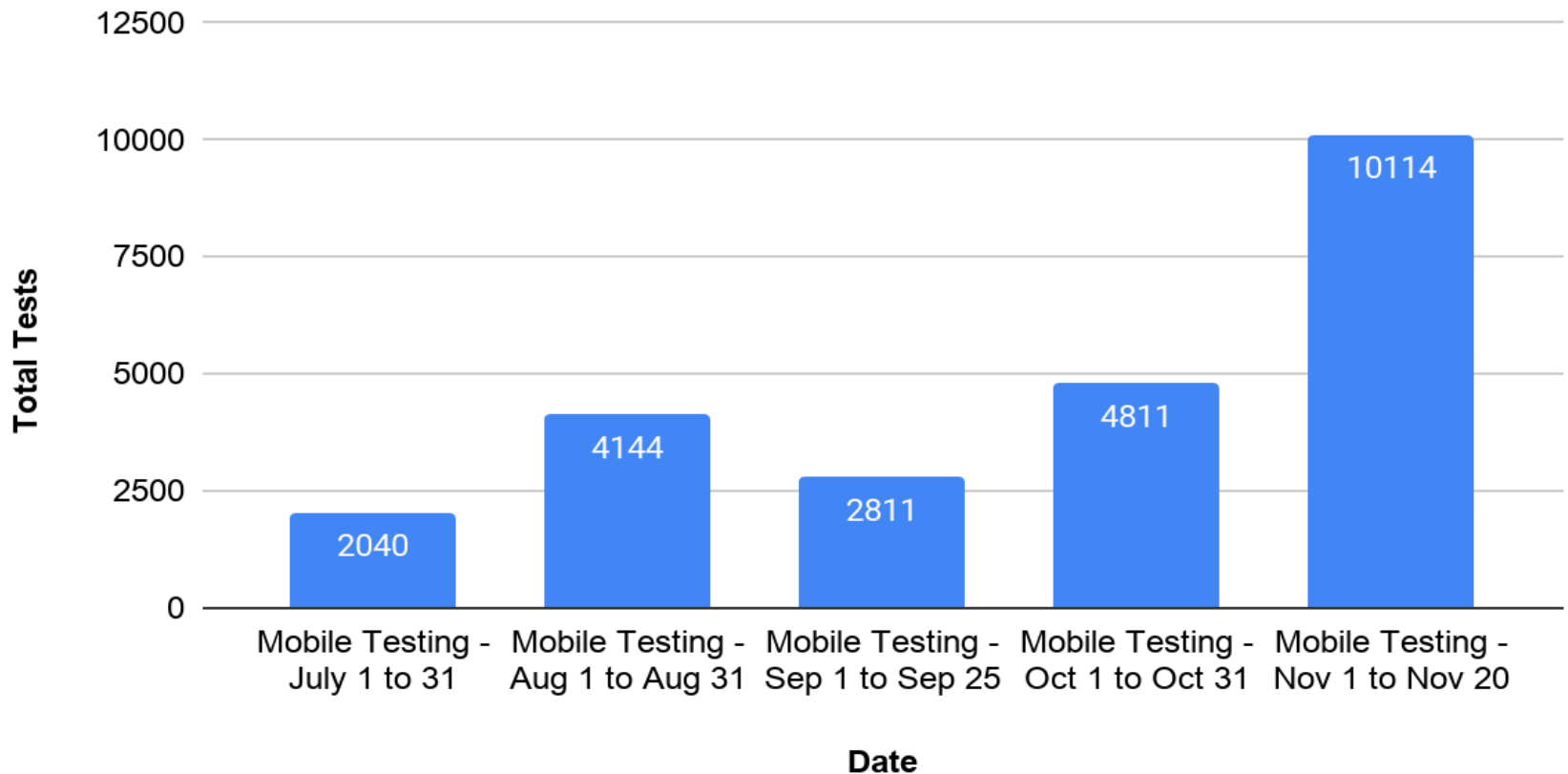
¹Testing period March 2–Nov. 14, 2020; ²Testing period Nov 1–14, 2020.

COVID-19 Community Testing

- **More than 2,000 COVID-19 tests conducted over two days:**
 - Pisani Center, Sat. 11/21: 850 tests
 - CambridgeSide drive thru, Sun., 11/22: 1,152 tests
 - Wait time for test: < 1 hour
 - *Cambridge Pandemic Collaborative*: Established to increase testing capacity & throughput; CPHD staff deployed to assist Fire, Police and ProEMS
- Result turnaround time increased:
 - **Broad Institute analyzes 50% of COVID-19 tests** conducted in MA (and 15% conducted nationwide)

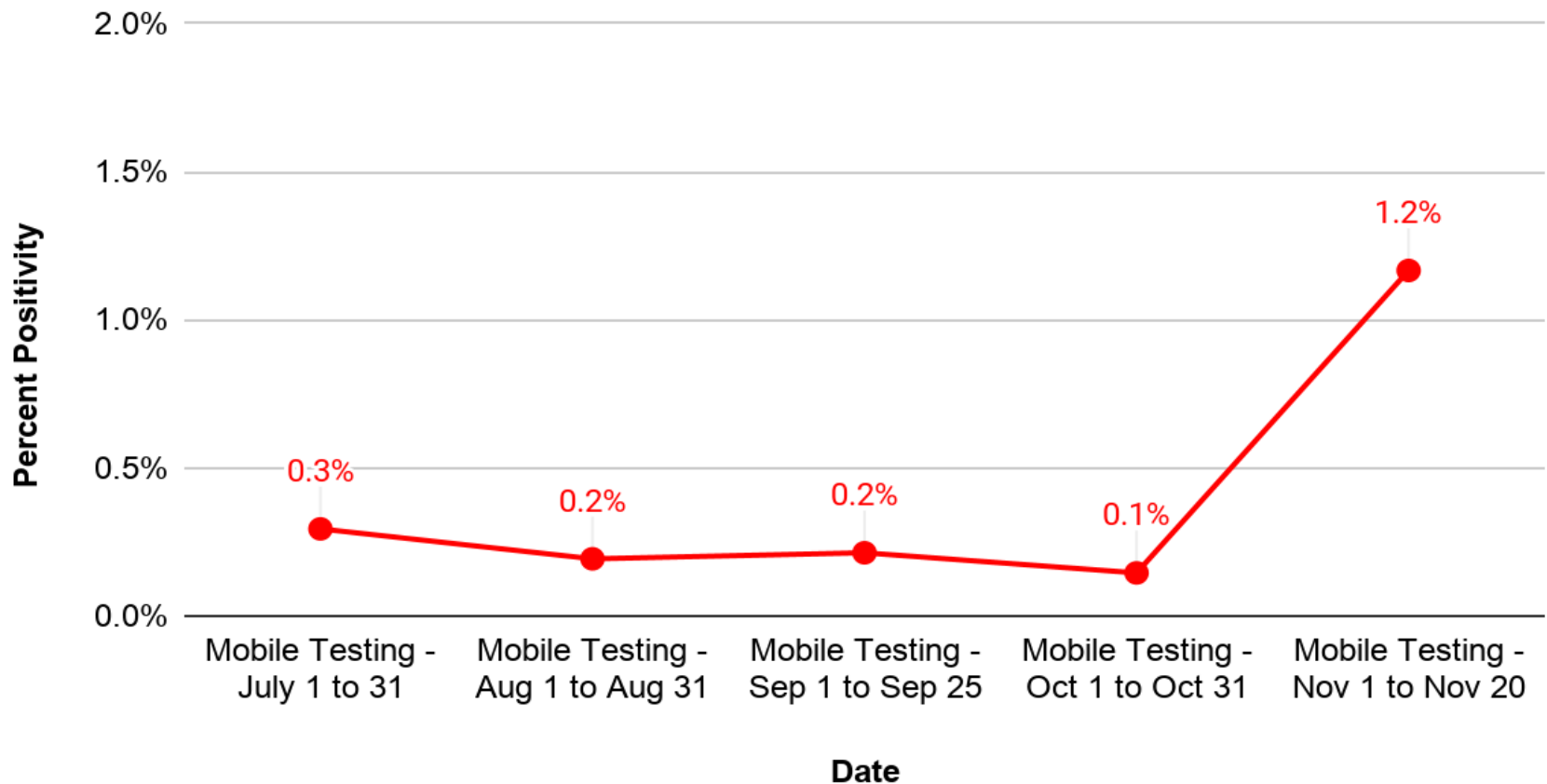
COVID-19 Community Testing

Community Testing - Total Tests per Month



COVID-19 Community Testing

Community Testing - Percent Positivity



Additional Cambridge Measures to Curb COVID-19 Spread

- **Targeted Neighborhood Outreach**
 - N. Cambridge, E. Cambridge, The Port, Cambridgeport
 - Cambridge Community Corps (C3) members will go door-to-door, speaking with residents about how and where to get tested (first week of Dec)
 - Leave behind testing information in multiple languages
- **Holiday Gathering Guidance**
 - Press release, social media and Code Red announcement reminding residents to celebrate with household members only and important steps to take if celebrating with others.

Additional Cambridge Measures to Curb COVID-19 Spread

- **Wastewater Surveillance:** Partnership with Biobot Analytics, Inc. to track COVID-19 outbreaks by analyzing wastewater.
 - Wastewater data will serve as early warning sign of increased COVID-19 infections.
 - Four collection points cover the majority of the city.
 - Data posted on City Dashboard in the next 2 weeks (waiting on analysis).
- **Flu Clinics:** @2,700 flu vaccines to date (>2.5 x of past)
 - First ever drive-thru clinic (11/14); 717 flu shots
 - School-based mandate (by 12/31)

COVID-19 Testing in K-12 Schools

CPS staff are being tested twice a week, on a voluntary basis, as part of a CPHD surveillance program. Testing is also offered to symptomatic students who become ill at school.

5,038 Tests

Tests administered to CPS staff through the voluntary testing program since Oct. 15 (as of Nov. 23)

5X

Average number of times a CPS staff member has gotten tested through the program since Oct. 15

978 Staff Tested

Total # of CPS staff who have been tested through the voluntary testing program since Oct. 15

52 students

Symptomatic CPS students who have been tested through the program since Oct. 15

COVID-19 Testing in K-12 Schools Per Week

CPS Staff Surveillance Testing Participation

