

# FIRST PARISH IN CAMBRIDGE

3 CHURCH STREET, CAMBRIDGE, MA 02138

**TORREY ARCHITECTURE**  
 75 Kneeland Street  
 Boston, MA 02111  
 617-227-1477  
 www.torreyarchitecture.com

**STRUCTURAL ENGINEER**  
 Structures North Consulting Engineers, Inc.  
 60 Washington Street, Suite 401  
 Salem, MA 01970  
 978-745-6817

**STEEPLE/JACK/ CONTRACTOR**  
 American Steeple & Tower  
 373 Essex Street  
 Salem, MA 01970  
 978-744-7194

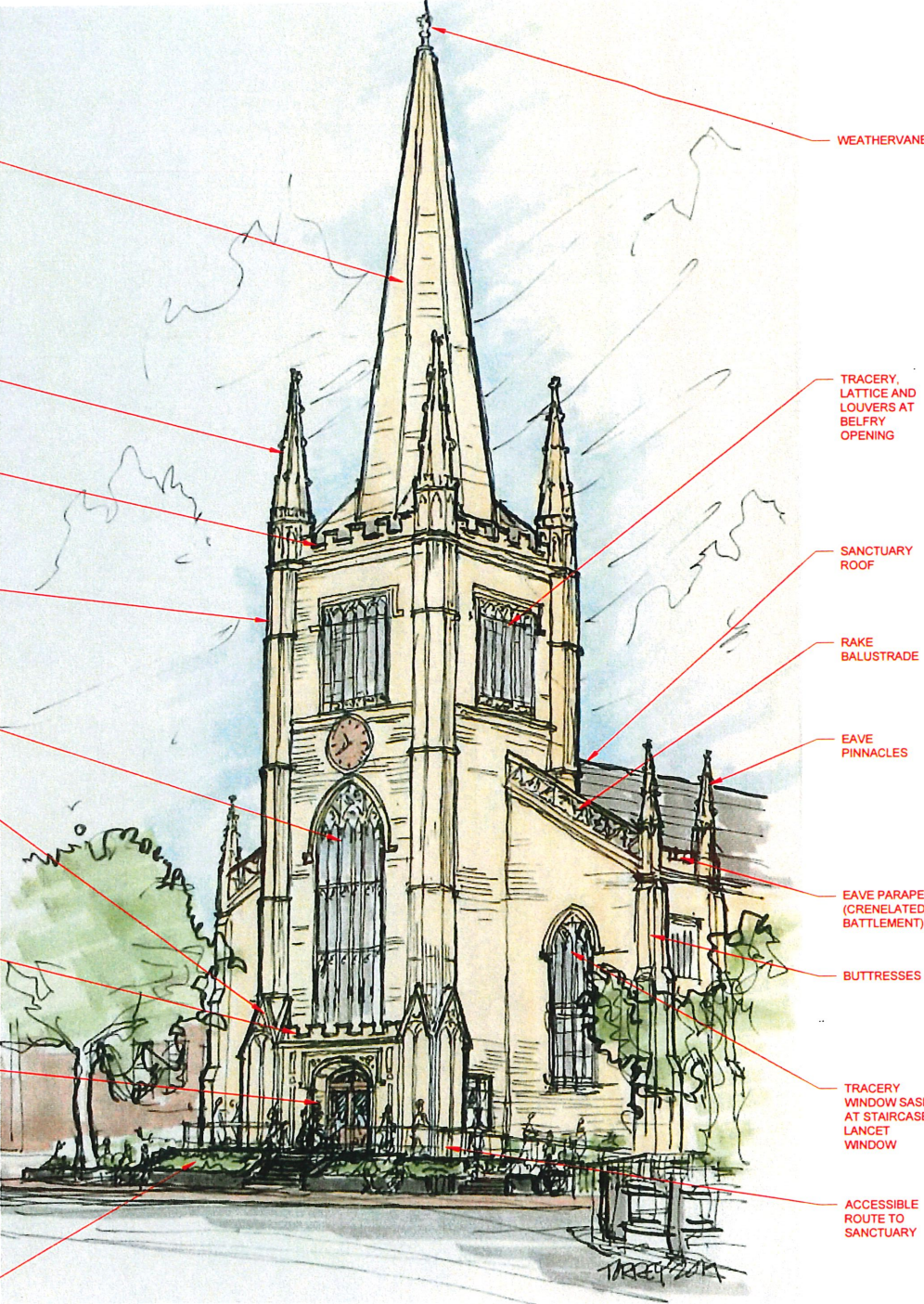
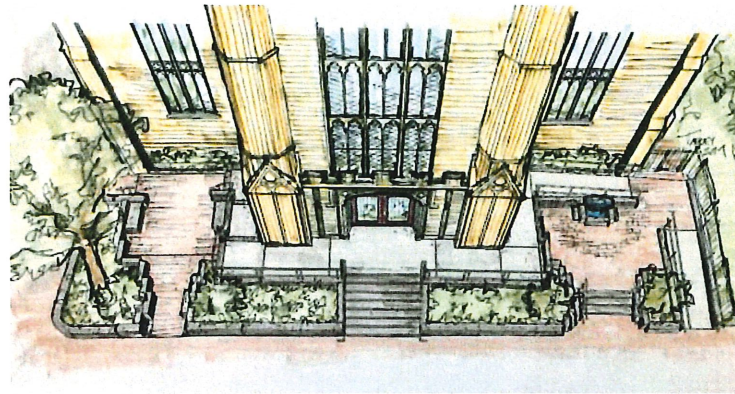
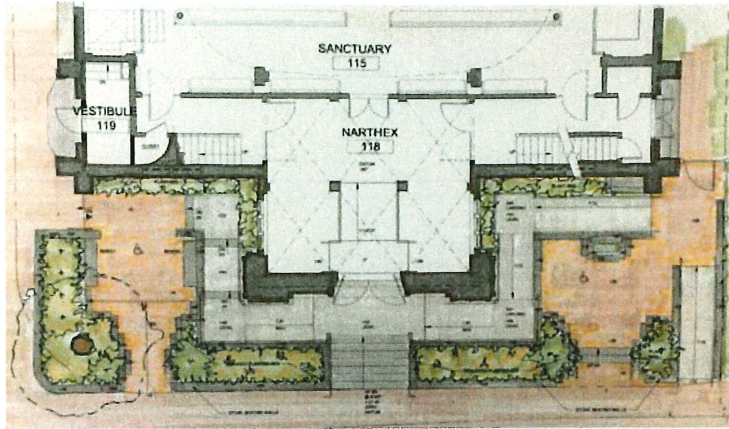
**LANDSCAPE ARCHITECT**  
 Weinmayr/Jay Assoc. Inc.  
 760 Main Street  
 Waltham, MA 02451

**LIGHTING CONSULTANT**  
 WSP USA  
 75 Arlington Street, 9th Fl  
 Boston, MA 02116

**COST CONSULTANT**  
 Eliana Construction Consultants  
 98 North Washington Street, Suite 109  
 Boston, MA 02114

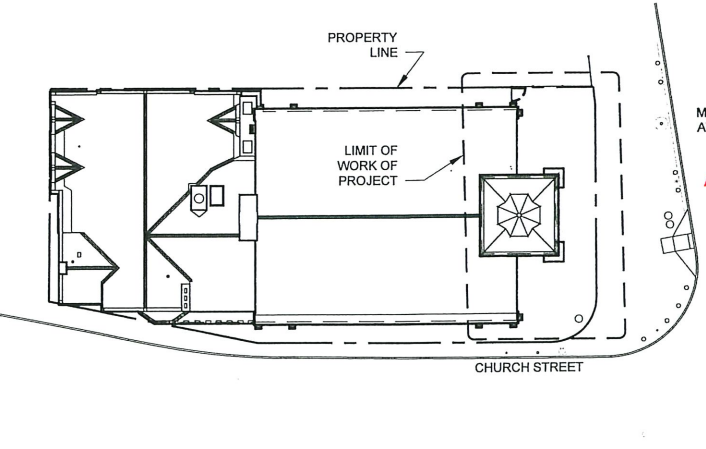
**EXTERIOR ELEVATIONS SURVEY**  
 Existing Conditions Surveys, Inc.  
 3398 Columbus Ave, #334  
 Boston, MA 02116

No.	Description	Date
	MASS AVE WALL AND TOWER PROJECT ESTIMATE SET	02/20/20
	REVISIONS	05/05/20
	REPORT	06/12/20
	CHC APPLICATION	09/08/20



CAMBRIDGE HISTORICAL COMMISSION  
 CERTIFICATE OF APPROPRIATENESS  
 APPLICATION  
 09-08-2020

- G-100 COVER SHEET
- 1. ARCHITECTURAL FEATURES THEN AND NOW
- 2. ARCHIVE OF LOST DETAILS/CRITICAL PROJECT PRIORITIES
- 3. SITE PLAN RENDERING
- 4. SITE PLAN BIRD'S EYE VIEW AND STREET ELEVATION
- 5. ENTRY VIEWS FROM EAST
- 6. TOWER ENTRY, NARTHEX LOBBY AND ENTRY DOOR
- 7. GFRP IN ARCHITECTURAL RESTORATION/OVERALL VIEW
- 8. SOUTH ELEVATION EXISTING AND PROPOSED
- 9. EAST ELEVATION EXISTING AND PROPOSED
- 10. NORTH ELEVATION EXISTING AND PROPOSED
- 11. D-001A DEMOLITION SITE/NARTHEX PLAN
- 12. D-201 DEMOLITION WEST AND EAST ELEVATIONS
- 13. A-001A SITE PLAN/ NARTHEX PLAN
- 14. A-100 MEZZANINE AND NARTHEX FLOOR PLAN
- 15. A-101 BALCONY LEVEL AND ATTIC FLOOR PLAN
- 16. A-102 BELFRY AND ATTIC TOWER PLAN
- 17. A-200 EXTERIOR ELEVATIONS
- 18. A-201 EXTERIOR ELEVATIONS
- 19. A-202 RESTORATION ELEVATIONS
- 20. A-203 RESTORATION ELEVATIONS
- 21. A-300 BUILDING SECTIONS
- 22. A-301 BUILDING SECTIONS
- 23. KEYNOTES
- 24. KEYNOTES
- 25. KEYNOTES
- 26. KEYNOTES



## MASSACHUSETTS AVENUE WALL AND TOWER PROJECT

### UNIVERSAL ACCESSIBILITY AND ARCHITECTURAL RESTORATION

FIRST PARISH  
 CAMBRIDGE, MA

COVER SHEET

Project number 1802  
 Date 09-08-2020  
 Drawn by DM  
 Checked by DT

G-100  
 Scale AS NOTED

# EXTERIOR CHRONOLOGY

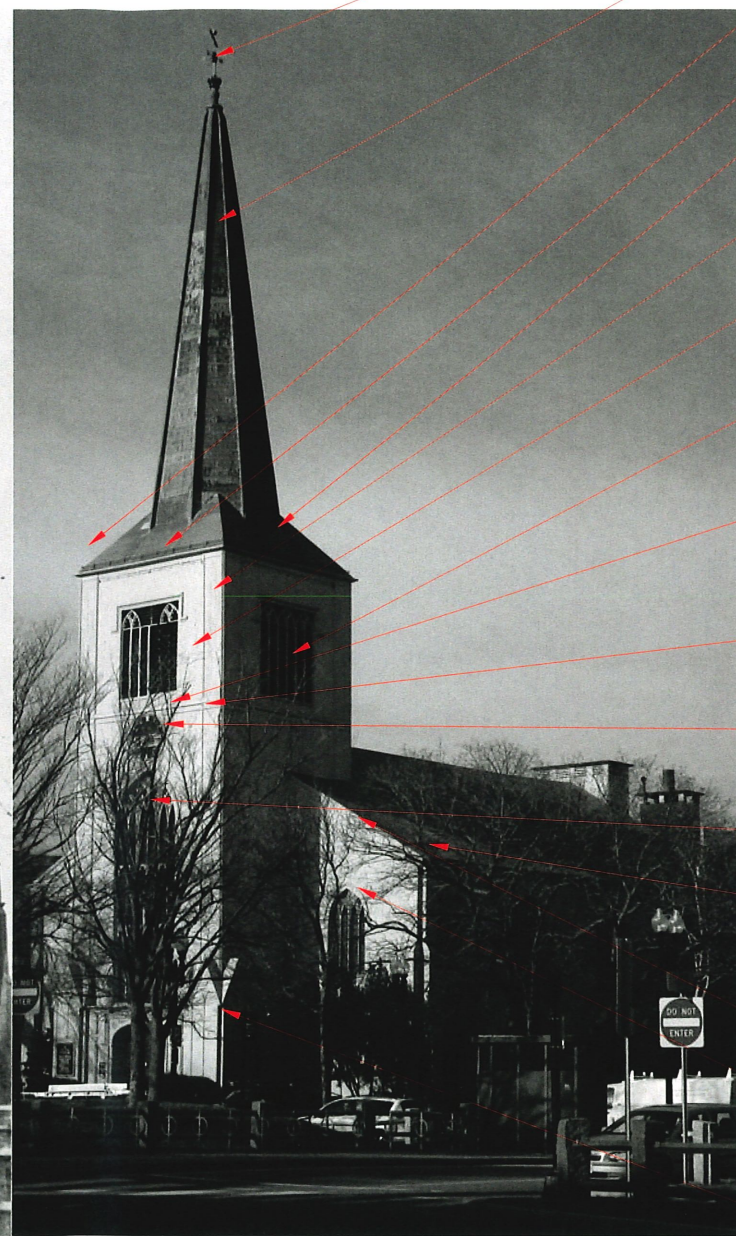
- IRON AND COPPER CROWN AND GILDED WEATHERVANE
- VERTICAL WOOD BOARD CLADDING AT SPIRE
- OCTAGONAL PINNACLES WITH SCROLL-CUT RIDGE BOARDS
- CRENELATED BALUSTRADE (RAISED ABOVE ROOF DRIP EDGE)
- LOW-SLOPE ROOF EAVE DRIP WITH MOLDING PROFILE (UNDERSIDE OF ROOF IS VISIBLE OVERHEAD IN BELFRY)
- OCTAGONAL CORNER PYLONS (BUILT OUT FROM STRUCTURAL TIMBER FRAME)
- VERTICAL FLUSH-BOARD SIDING WITH INTERMITTENT WATER-TABLE AT CORNER PYLONS
- HORIZONTAL FLUSH-BOARD SIDING AT TOWER MAIN BODY
- BELFRY OPENINGS WITH OPEN DIAMOND LATTICE FACED WITH VERTICAL WOODEN GOTHIC-ARCHED TRACERY
- QUATREFOIL PANELS AT BASE OF BELFRY TRACERY
- HALF-ROUND DOUBLE WATER TABLE
- TRIMMED CLOCK FACE WITH BLACK SURFACING (PRESUMABLY SCHMALTZ) AND GILDED CLOCK NUMERALS AND HANDS
- TALL LANCET WINDOW WITH DIAMOND PATTERN GLAZING
- SQUARE PINNACLES WITH SCROLL-CUT RIDGE BOARDS RISING FROM ROOF EAVE AS VERTICAL EXTENSIONS OF CORNER BUTTRESSES
- CRENELATED BALUSTRADE BETWEEN
- RAKE BALUSTRADE WITH OPEN SCROLL-CUT TRACERY BETWEEN TOP AND BOTTOM RAILS
- PAIRED STEPPED BUTTRESSES AT EAVE OF FOUR CORNERS OF CHURCH, TERMINATING AT MOLDING PROFILE AT ROOF EAVE
- SQUARE CROSS-GABLED ONE-STORY PYLONS SUPPORTING OCTAGONAL CORNER PYLONS



**1833-1954**

ISAIAH ROGERS, ARCHITECT

COLOR:  
PAINTED WOOD (IN APPARENT EARTHTONE COLOR) AT ALL SURFACES, INCLUDING SPIRE



**1956-2019**

ARTHUR H. BROOKS, ARCHITECT

- IRON AND COPPER CROWN AND GILDED WEATHERVANE REMAINS
- FLAT FOLDED SEAMED LEAD-COATED COPPER CLADDING AT SPIRE 1949
- TOWER PINNACLES REMOVED C. 1955
- CRENELATED BALUSTRADE REMOVED C.1949 (?)
- OVER-FRAMED STEEP-SLOPED FLAT SEAM COPPER ROOF C.1955
- PROJECTING OCTAGONAL CORNER PYLONS REMOVE C.1955
- VERTICAL SIDING ACROSS FULL FACE OF TOWER, WITH FLAT WOOD TRIM DETAILING C. 1955
- BELFRY OPENING TRACERY AND LATTICE BACKED UP WITH HORIZONTAL METAL LOUVERED PANELS
- QUATREFOIL PANELS REPLACED WITH FLAT PLYWOOD PANELS (EXCEPT REMAINING AT REAR WEST FACE)
- FLAT WOOD TRIM AT FORMER DOUBLE WATER TABLE BAND C. 1955
- TRIMMED CLOCK FACE WITH BLACK-RED SURFACING AND GILDED CLOCK NUMERALS AND HANDS
- TALL LANCET WINDOW WITH DIAMOND PATTERN GLAZING
- SQUARE PINNACLES AND BALUSTRADE REMOVED AT WEST EAVES C. 1939 (?), THEN AT EAST EAVES, ROOF SLATED OVER C.1952 (?)
- RAKE BALUSTRADE REMOV C. 1939 (?)
- PAIRED STEPPED BUTTRESSES AT EAVE OF FOUR CORNERS OF CHURCH REMAIN, TERMINATING AT ROOF EAVE GUTTER
- SQUARE CROSS-GABLED ONE-STORY PYLONS REMAIN WITH METAL GABLE ROOFS PLACE OF REMOVED OCTAGONAL PYLONS

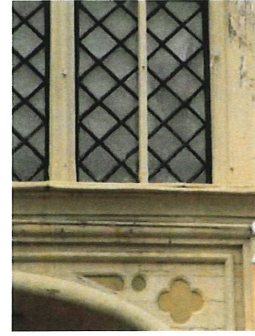
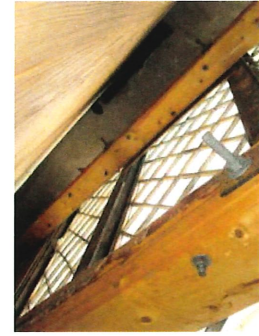
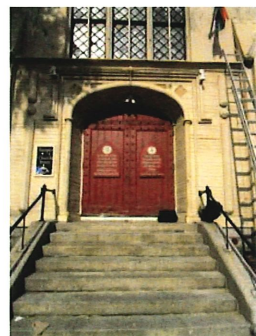
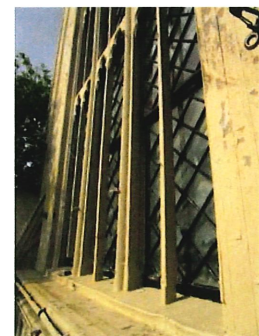
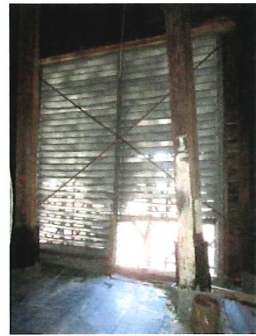
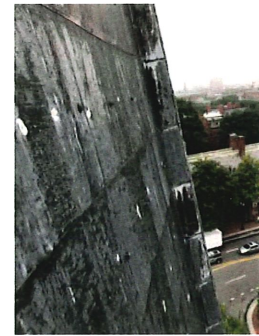
COLOR:  
SPIRE AND STEEP-SLOPED ROOF IN DARK WEATHERED LEAD-COATED COPPER, WOOD IN LIMESTONE COLORED PAINT



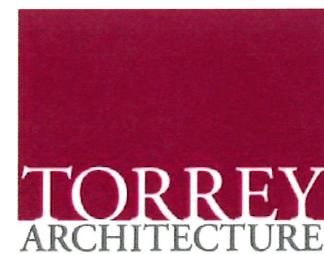
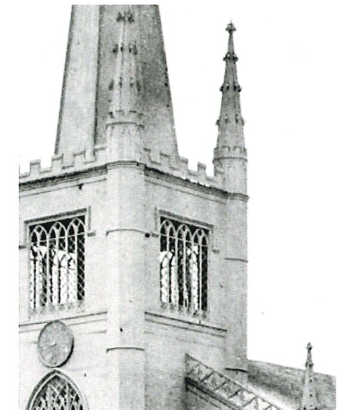
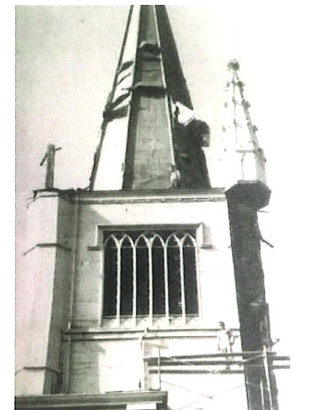
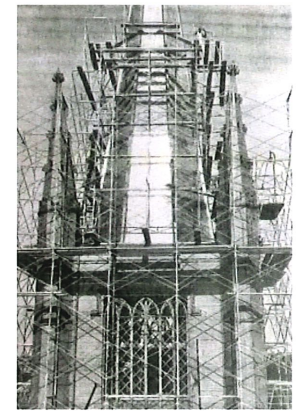
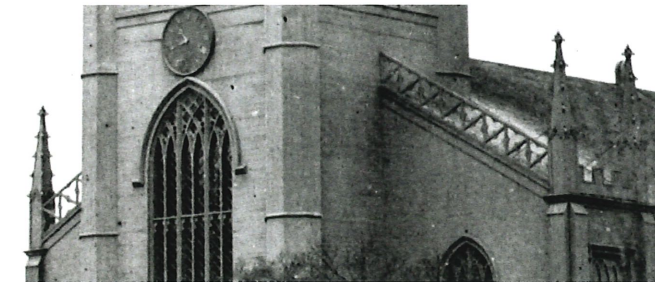
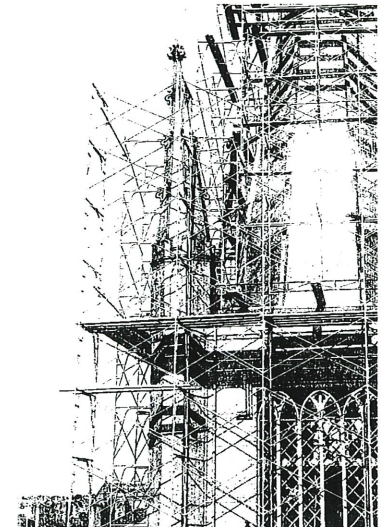
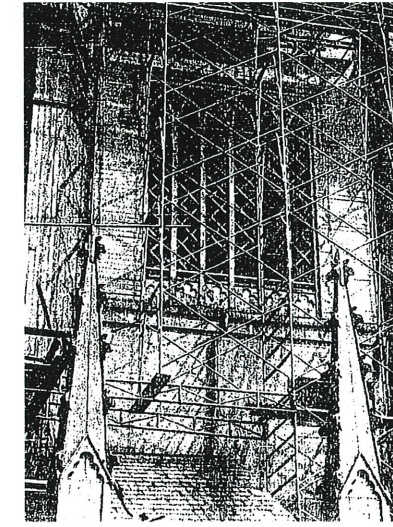
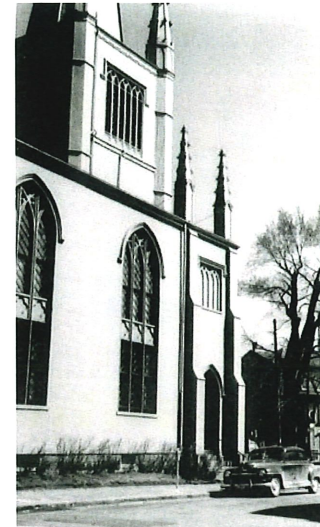
FIRST PARISH IN CAMBRIDGE  
MASSACHUSETTS AVENUE  
WALL AND TOWER PROJECT



CRITICAL PROJECT PRIORITIES



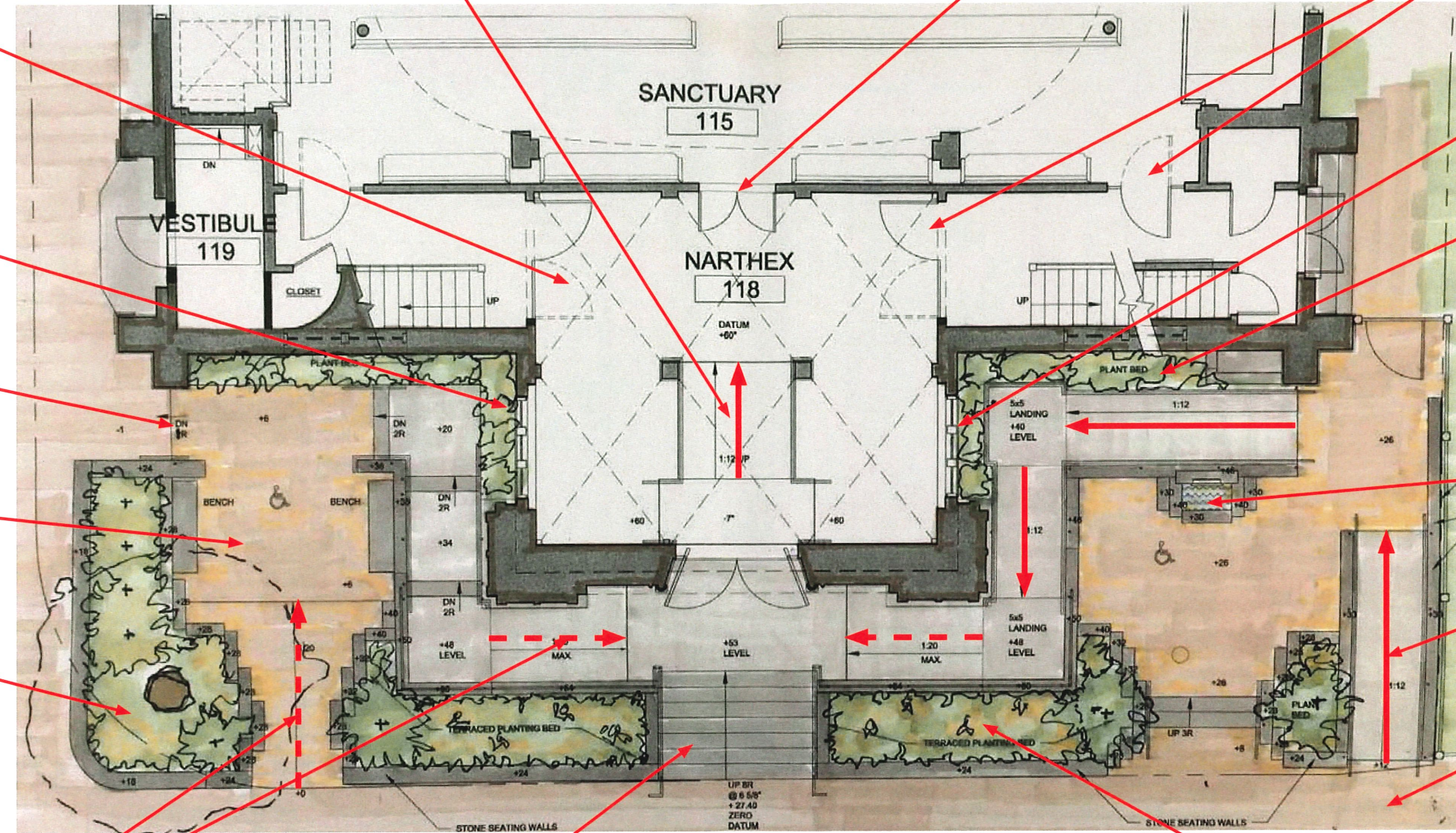
ARCHIVAL RECORD OF LOST ARCHITECTURAL DETAILS



FIRST PARISH IN CAMBRIDGE  
MASSACHUSETTS AVENUE  
WALL AND TOWER PROJECT



# PLAN VIEW



OPEN NARTHEX AIRLOCK LOBBY WITH INDIRECT LIGHTING OF CEILING VAULTS AND VIEWS THROUGH GLASS DOORS AND ENLARGED WINDOWS TO SURROUNDING ENVIRONMENT

CHURCH STREET

WIDENED NARTHEX WINDOWS WITH VIEWS TO SOUTH TERRACE AND HARVARD SQUARE

STEPPED ROUTE TO ENTRY DOOR LANDING FROM CHURCH STREET SIDEWALK

BENCHES AT ACCESSIBLE SOUTH ACTIVITY TERRACE FACING HARVARD SQUARE

"RIEPANDENS YEW", IVY AND BULBS AT EXPANDED PLANTING BED AT TREE WELL

DASHED ARROWS INDICATE 1-IN-20 GRADUALLY SLOPED WALKWAYS MEETING ADA AND MAAB REGULATIONS FOR ACCESSIBLE ROUTES

RAMPED ACCESSIBLE ROUTE TO SANCTUARY

AUTO-OPERATOR AT EXISTING DOORS

ACCESSIBLE GLASS DOORS AND SIDELIGHTS

WIDENED NARTHEX WINDOWS WITH VIEWS TO NORTH TERRACE AND BURIAL GROUND

PLANTING BEDS BETWEEN PAVED ROUTES AND CHURCH

CITY OF CAMBRIDGE BURIAL GROUND

CHALICE FOUNTAIN AND MEDITATION CIRCLE AT RAISED ACCESSIBLE NORTH TERRACE FACING BURIAL GROUND

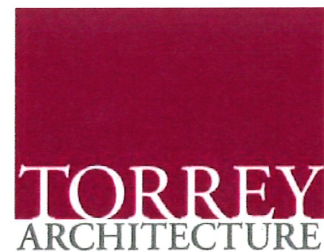
SOLID ARROWS INDICATE 1-IN-12 SLOPED CONCRETE RAMPS MEETING ADA AND MAAB REGULATIONS FOR ACCESSIBLE ROUTES

ACCESSIBLE ROUTE TO ENTRY DOOR LANDING FROM MASS AVE SIDEWALK

GRANITE STEPS AND IRONWORK HANDRAILS

MASSACHUSETTS AVENUE SIDEWALK

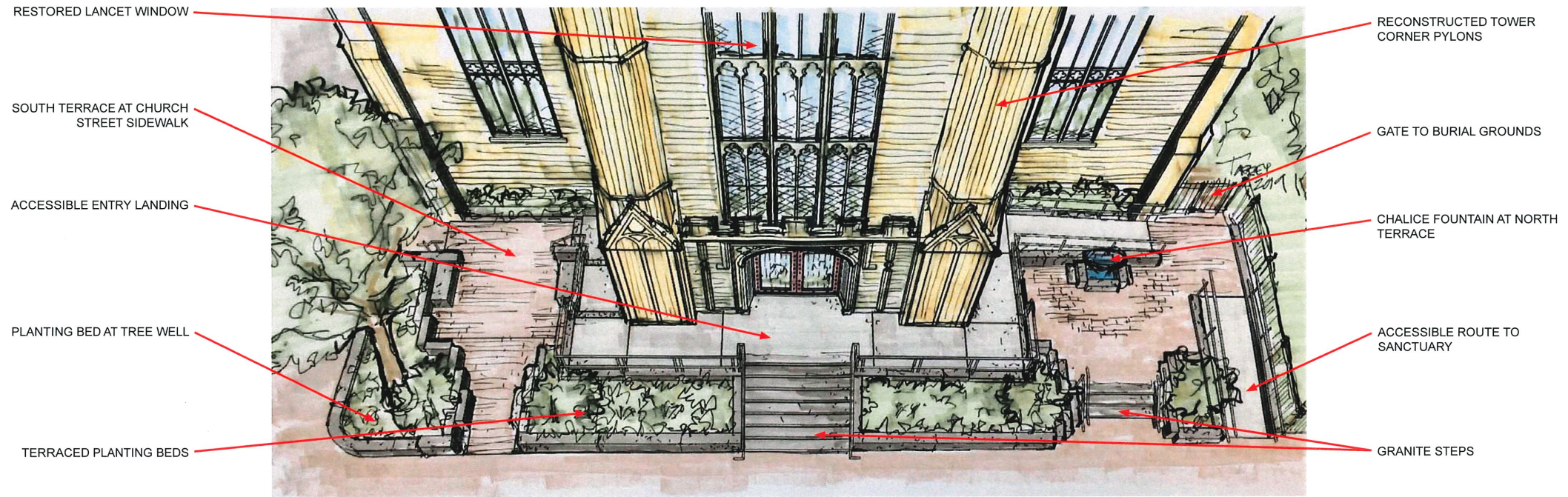
"RIEPANDENS YEW", IVY AND BULBS AT TERRACED "GREEN PEDESTAL" PLANTING BEDS



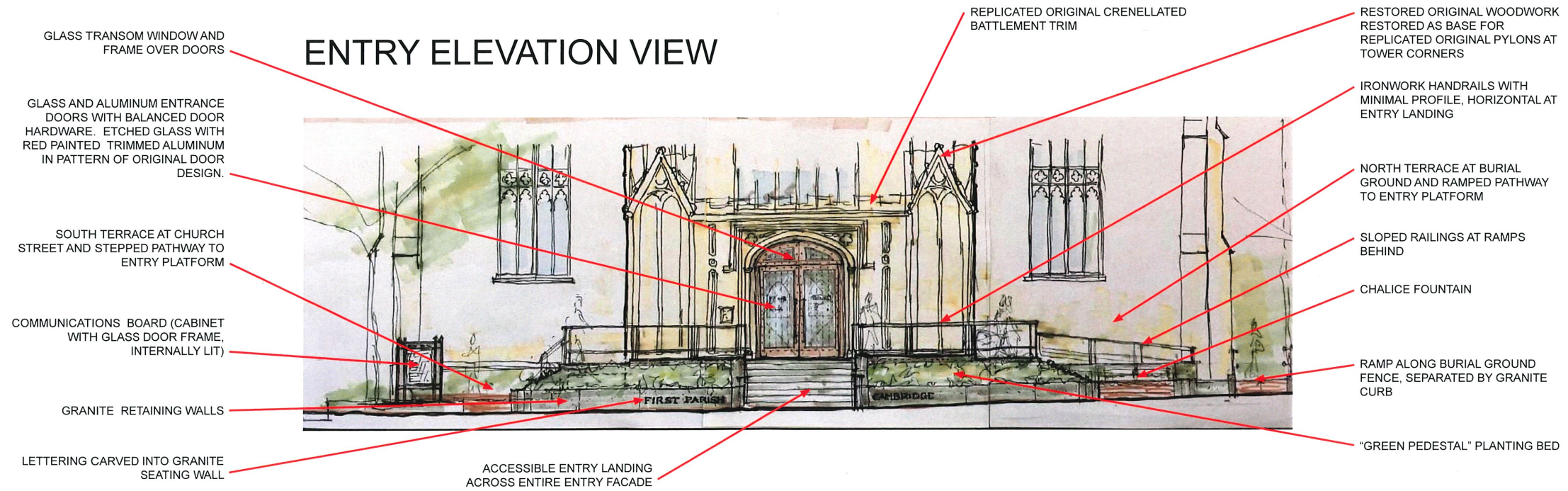
FIRST PARISH IN CAMBRIDGE  
 MASSACHUSETTS AVENUE  
 WALL AND TOWER PROJECT



# BIRD'S EYE VIEW AT ACCESSIBLE ENTRY



# ENTRY ELEVATION VIEW



FIRST PARISH IN CAMBRIDGE  
 MASSACHUSETTS AVENUE  
 WALL AND TOWER PROJECT



# ENTRY VIEW FROM SOUTHEAST

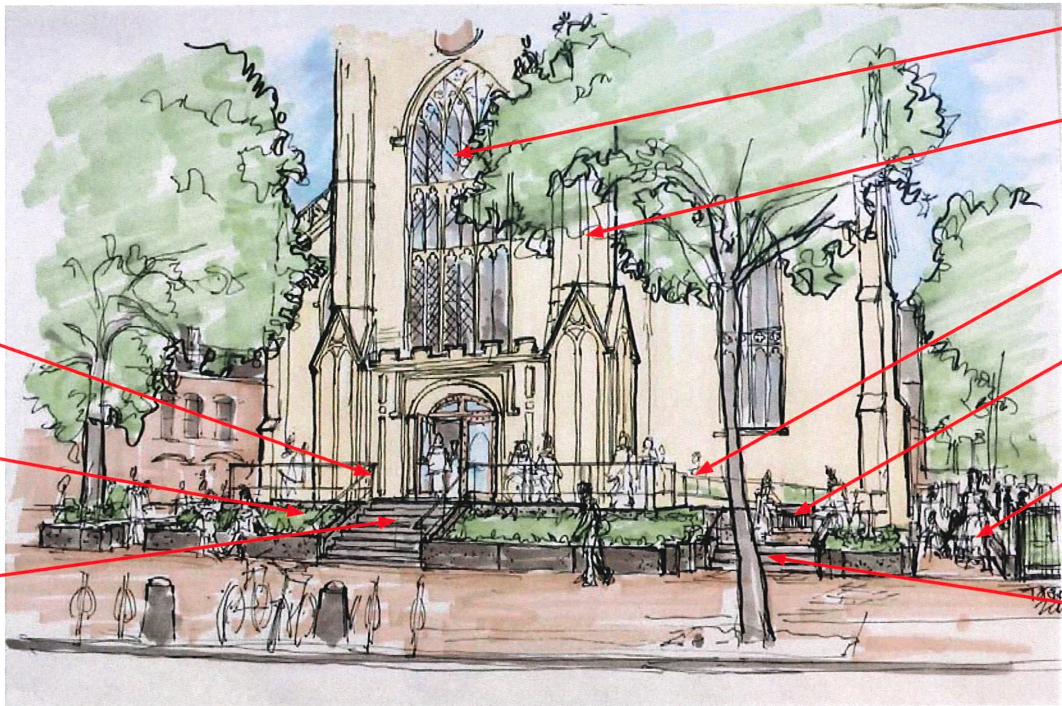
- (HIDDEN IN THIS VIEW) WIDENED NARTHEX WINDOWS WITH VIEWS TO SOUTH TERRACE AND HARVARD SQUARE
- STEPPED ROUTE TO ENTRY DOOR LANDING FROM CHURCH STREET SIDEWALK
- BENCHES AT ACCESSIBLE SOUTH ACTIVITY TERRACE FACING HARVARD SQUARE
- COMMUNICATIONS BOARD (CABINET WITH GLASS DOOR FRAME, INTERNALLY LIT)
- GRANITE RETAINING WALLS AT PLANTING BEDS PROVIDE SEATING FOR PEDESTRIANS
- ACCESSIBLE ENTRY LANDING ACROSS ENTIRE ENTRY FACADE



- RECONSTRUCTED ORIGINAL DESIGN FEATURES: CRENELLATED BALUSTRADE, FINIALS, EAVE BALUSTRADE, TOWER PYLONS
- GLASS AND ALUMINUM DOORS FACING MASSACHUSETTS AVENUE SIDEWALK AND HARVARD UNIVERSITY GATE
- "GREEN PEDESTAL" GRANITE RETAINING WALLS AND TERRACED PLANTING BEDS

# ENTRY VIEW FROM NORTHEAST

- ACCESSIBLE ENTRY LANDING ACROSS ENTIRE ENTRY FACADE
- "GREEN PEDESTAL" PLANTING BED
- GRANITE STEPS WITH IRONWORK HANDRAILS



- RESTORED LANCET WINDOW WITH INTERNAL LIGHTING
- RESTORED ORIGINAL PYLON BASES, RECONSTRUCTED CRENELLATED BALUSTRADE AND OCTAGONAL CORNER PYLONS AT TOWER
- ACCESS RAMPS ALONG WALL OF CHURCH AND TOWER
- CHALICE FOUNTAIN AND MEDITATION CIRCLE AT RAISED NORTH TERRACE
- RAMPED SIDEWALK ALONG BURIAL GROUND FENCE LINE AT NORTH EDGE OF CHURCH PROPERTY
- GRANITE STEPS RAISED TO NORTH TERRACE



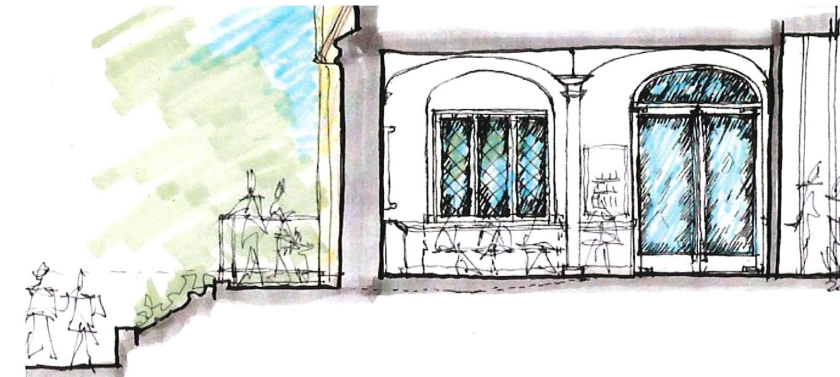
FIRST PARISH IN CAMBRIDGE  
 MASSACHUSETTS AVENUE  
 WALL AND TOWER PROJECT



ENTRY DOOR



TOWER ENTRY AND NARTHEX LOBBY



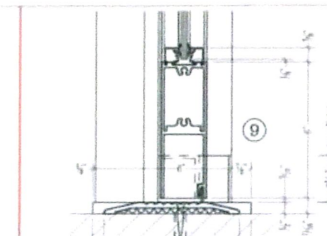
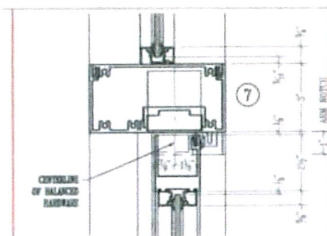
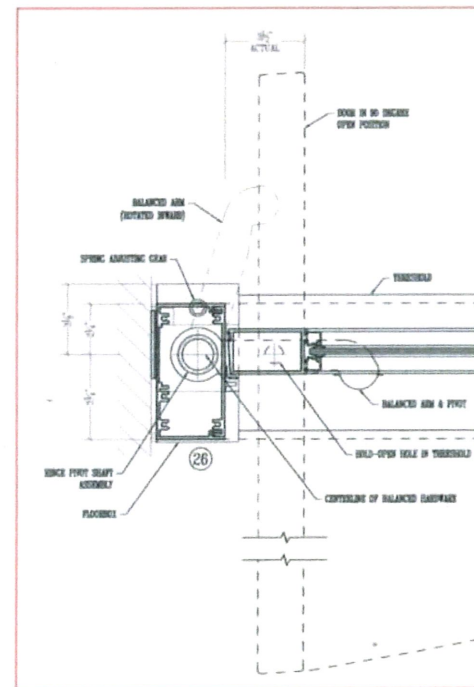
**Ellison**  
CUSTOM BALANCED DOORS

Extruded Aluminum  
Stile & Rail Balanced Doors

Section  
**C**

**GENERAL DRAWING NOTES:**

- Material:**
  - Extruded aluminum alloy 6063-T6 with a minimum wall thickness of 1/8".
- Finishes:**
  - Available in anodized, kynar painted and powder coat paint finishes
- Doors:**
  - Standard door thickness is 2"
  - Available stile widths: 2-1/2", 3-1/2" and 4-1/2"
  - Available top rail heights: 2-1/2", 3-1/2" and 5"
  - Available bottom rail heights: 6" and 10" or greater using dress plates (10" recommended to comply with 2004 ADA guidelines)
  - Center rail minimum is 1-1/2" (per detail 8 on page 6)
  - Interior side glass stops snap on to accommodate most glass thickness (special glass sizes can be accommodated, see page 12 or consult factory).



FIRST PARISH IN CAMBRIDGE  
MASSACHUSETTS AVENUE  
WALL AND TOWER PROJECT



GLASS FIBER REINFORCED POLYESTER IN ARCHITECTURAL RESTORATION

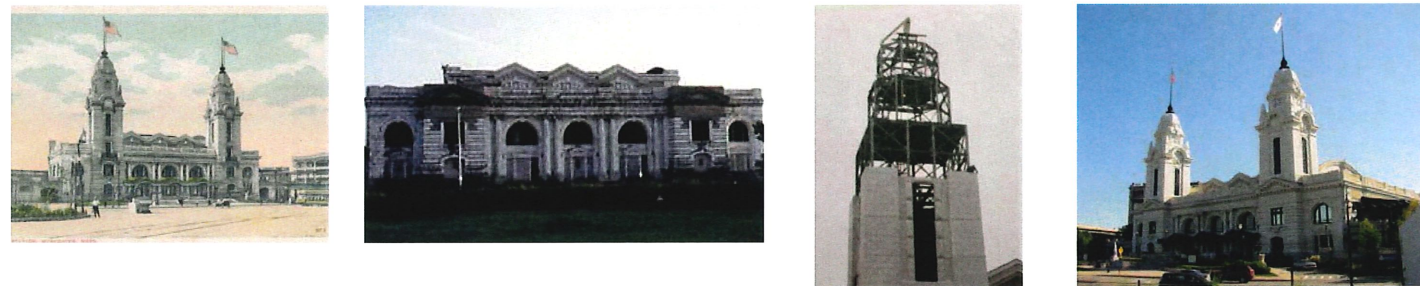
FIRST UNITARIAN UNIVERSALIST SOCIETY OF NEWTON



THE BERKELEY BUILDING OF BOSTON



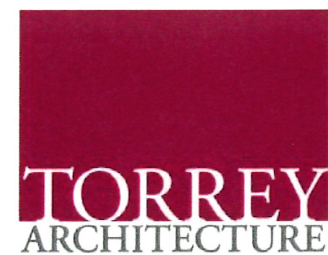
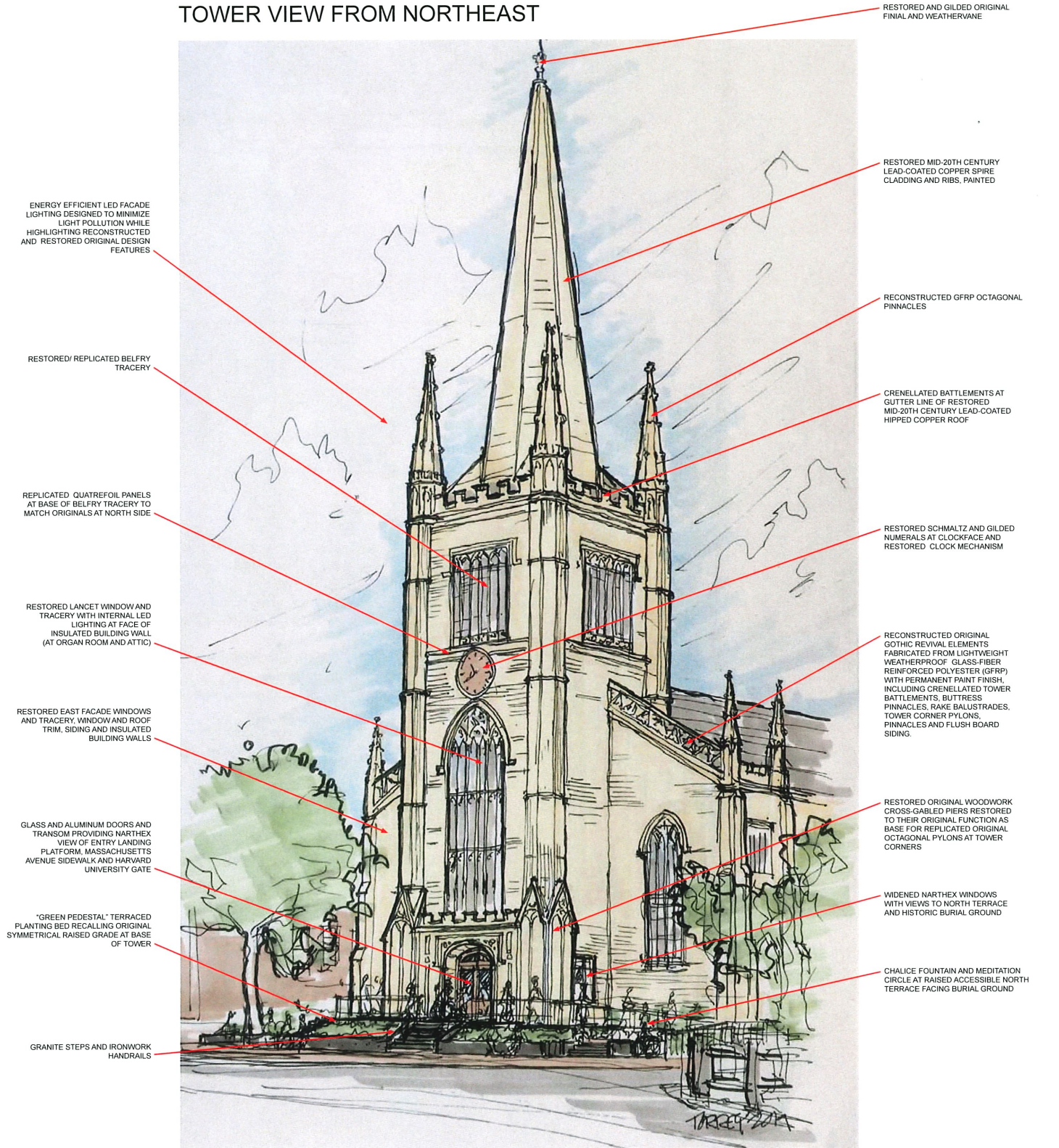
UNION STATION OF WORCESTER



FIRST PARISH UNITARIAN UNIVERSALIST OF CANTON



TOWER VIEW FROM NORTHEAST

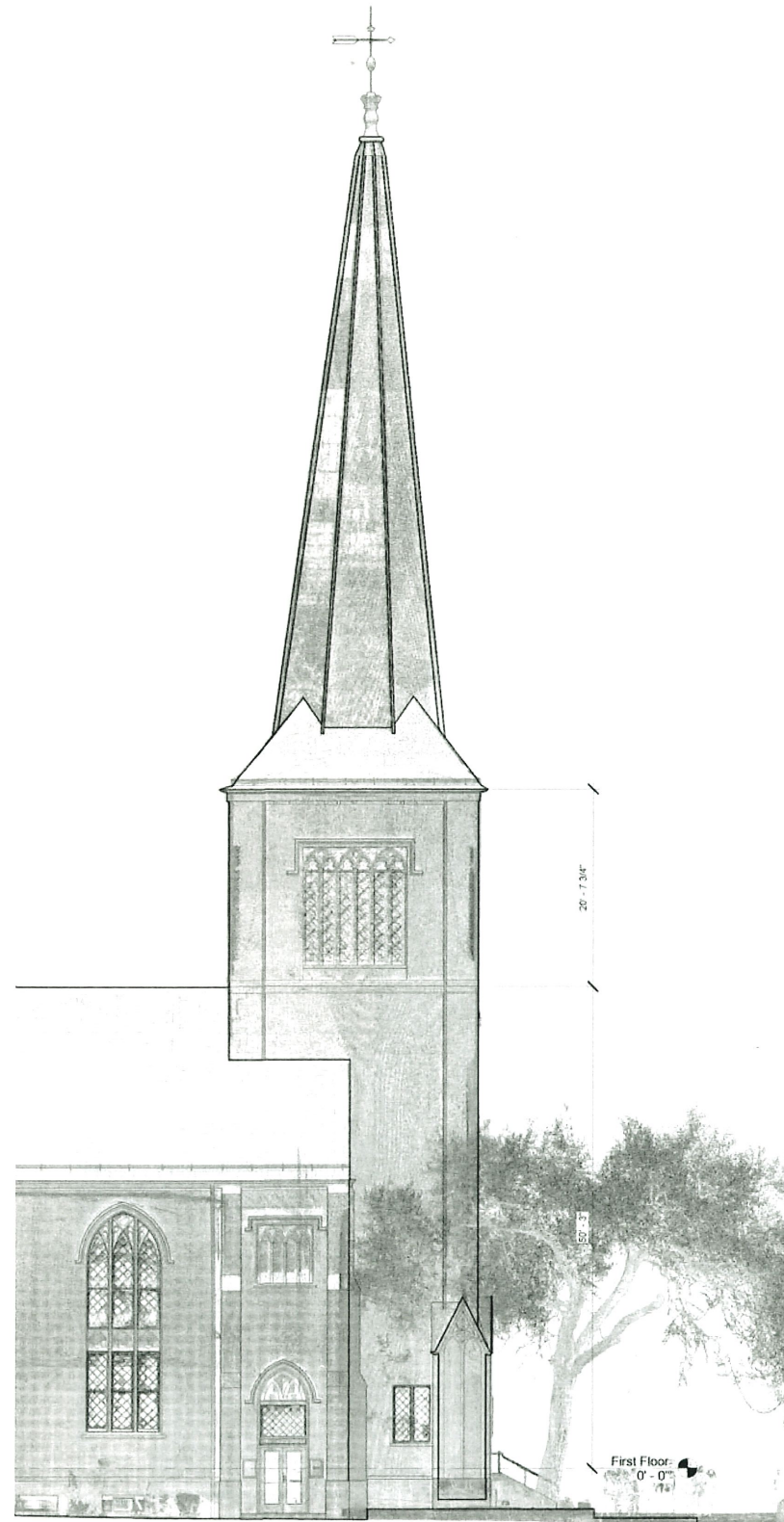


FIRST PARISH IN CAMBRIDGE  
 MASSACHUSETTS AVENUE  
 WALL AND TOWER PROJECT

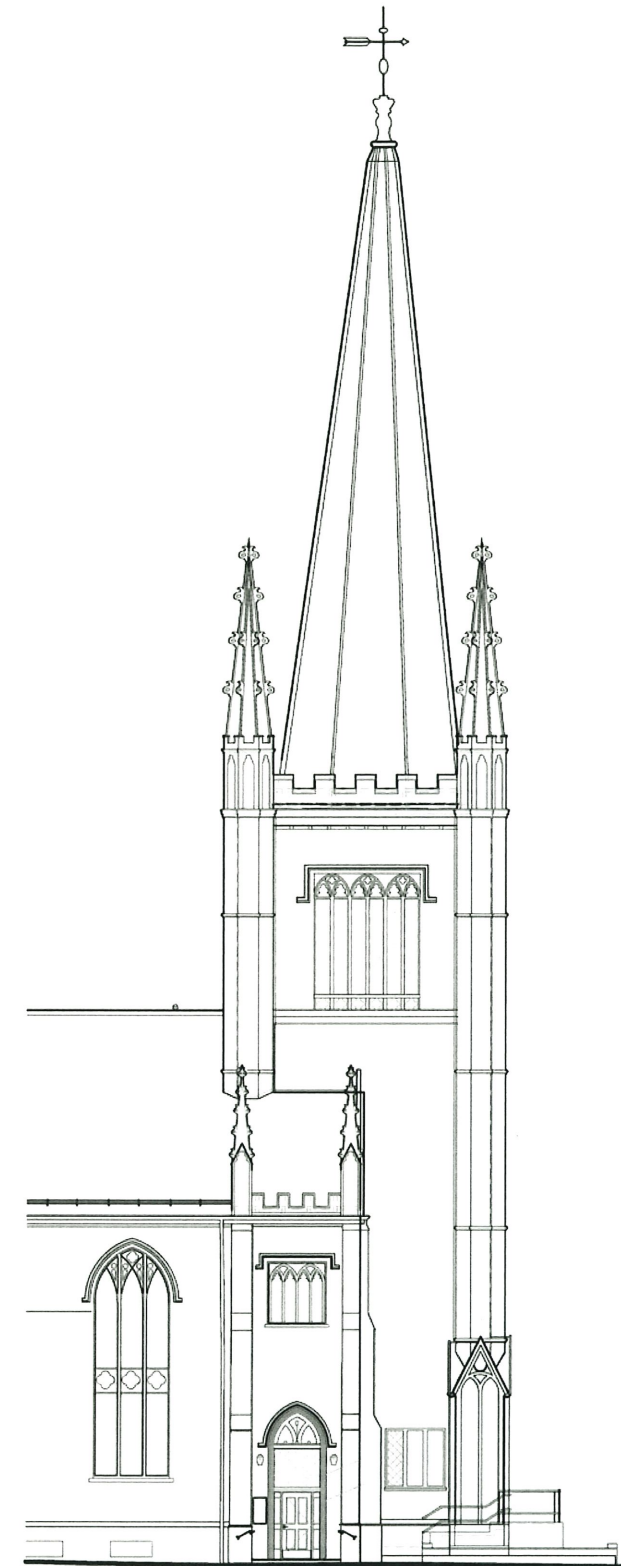




EXISTING SOUTH ELEVATION

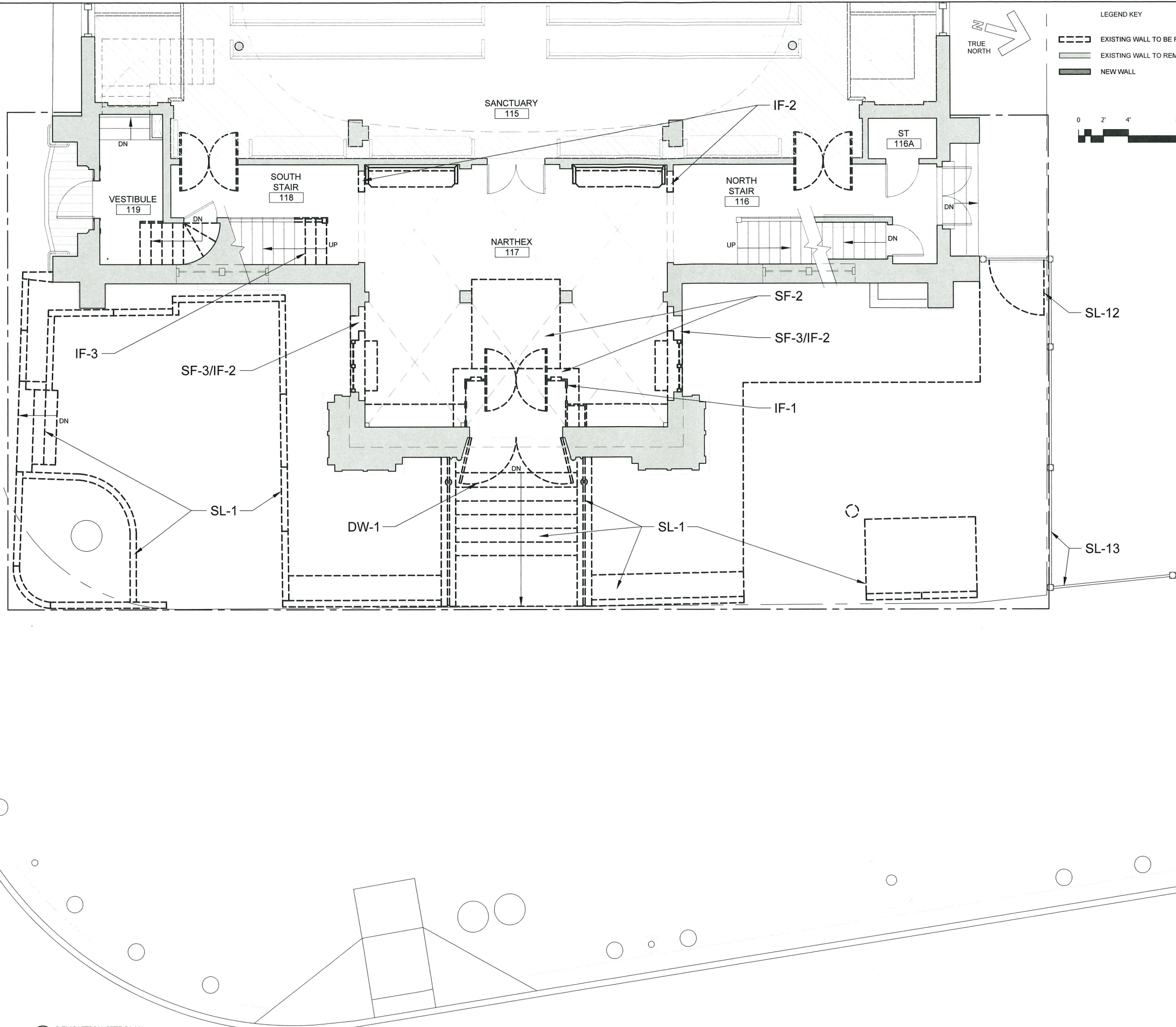


PROPOSED SOUTH ELEVATION



FIRST PARISH IN CAMBRIDGE  
MASSACHUSETTS AVENUE  
WALL AND TOWER PROJECT





# TORREY ARCHITECTURE

75 Kneeland Street  
 Boston, MA 02111  
 617-227-1477  
 www.torreyarchitecture.com

**STRUCTURAL ENGINEER**  
 Structures North Consulting Engineers, Inc.  
 60 Washington Street, Suite 401  
 Salem, MA 01970  
 978-745-6817

**STEEPLEJACK/ CONTRACTOR**  
 American Steeple & Tower  
 373 Essex Street  
 Salem, MA 01970  
 978-744-7194

**LANDSCAPE ARCHITECT**  
 Weinmayr, Jay Assoc. Inc.  
 760 Main Street  
 Waltham, MA 02451

**LIGHTING CONSULTANT**  
 WSP USA  
 75 Arlington Street, 9th Fl  
 Boston, MA 02116

**COST CONSULTANT**  
 Elaina Construction Consultants  
 98 North Washington Street, Suite 109  
 Boston, MA 02114

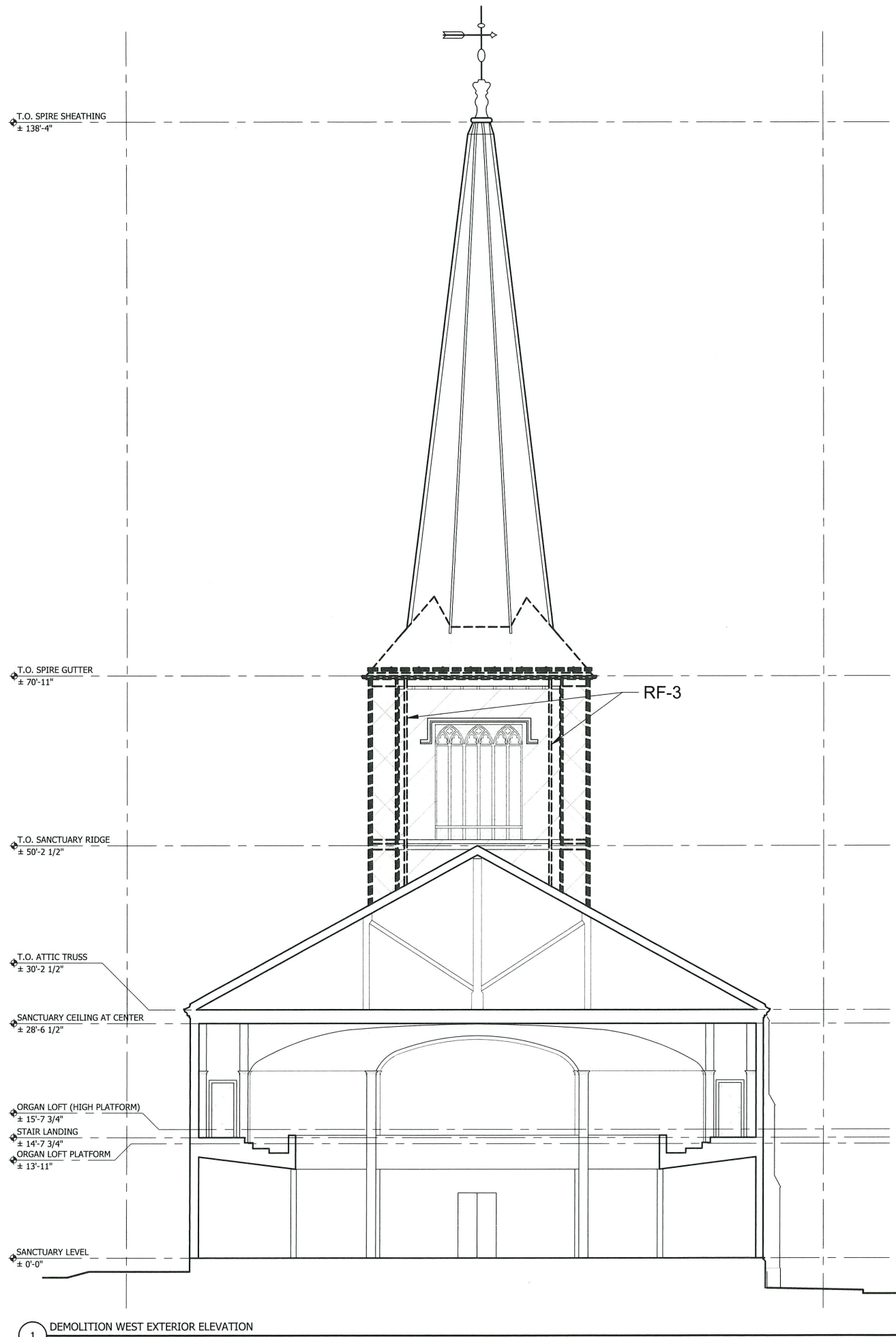
No.	Description	Date
	MASS AVE WALL AND TOWER PROJECT ESTIMATE SET	02/20/20
	REVISIONS	05/05/20
	REPORT	06/12/20

FIRST PARISH  
 CAMBRIDGE, MA  
 DEMOLITION  
 SITE PLAN/  
 NARTHEX PLAN

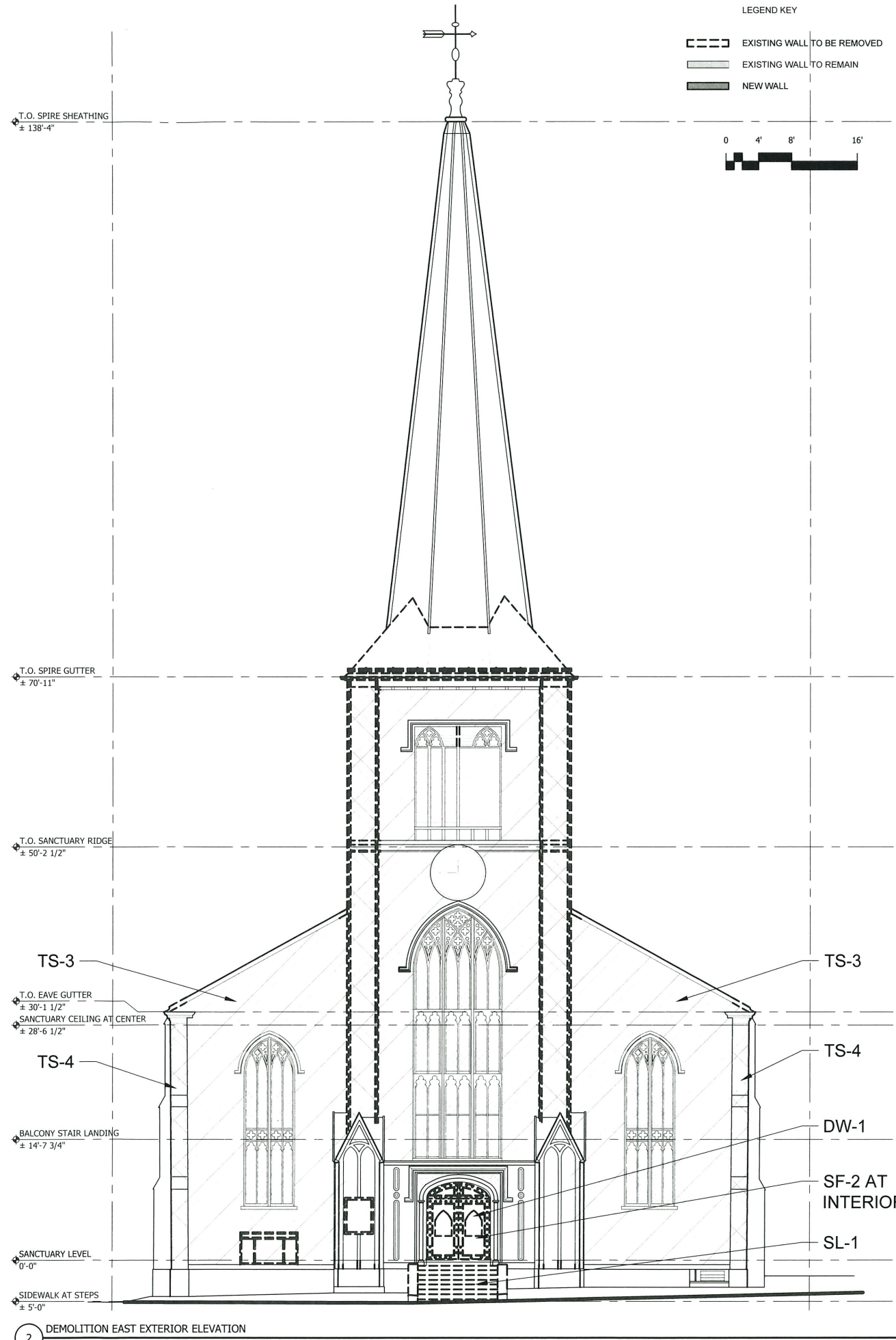
Project number	1802
Date	06-12-2020
Drawn by	DM
Checked by	DT

D-001A

Scale AS NOTED



1 DEMOLITION WEST EXTERIOR ELEVATION  
SCALE: 1/8"=1'-0"



2 DEMOLITION EAST EXTERIOR ELEVATION  
SCALE: 1/8"=1'-0"

LEGEND KEY  
 --- EXISTING WALL TO BE REMOVED  
 --- EXISTING WALL TO REMAIN  
 --- NEW WALL



# TORREY ARCHITECTURE

75 Kneeland Street  
 Boston, MA 02111  
 617-227-1477  
 www.torreyarchitecture.com

**STRUCTURAL ENGINEER**  
 Structures North Consulting Engineers, Inc.  
 60 Washington Street, Suite 401  
 Salem, MA 01970  
 978-745-6817

**STEEPLEJACK/ CONTRACTOR**  
 American Steeple & Tower  
 373 Essex Street  
 Salem, MA 01970  
 978-744-7194

**LANDSCAPE ARCHITECT**  
 Weinmayr/Jay Assoc. Inc.  
 760 Main Street  
 Waltham, MA 02451

**LIGHTING CONSULTANT**  
 VISIP USA  
 75 Arlington Street, 9th Fl  
 Boston, MA 02116

**COST CONSULTANT**  
 Eliana Construction Consultants  
 98 North Washington Street, Suite 109  
 Boston, MA 02114

No.	Description	Date
	MASS AVE WALL AND	
	TOWER PROJECT ESTIMATE SET	02/20/20
	REVISIONS	05/05/20
	REPORT	06/12/20

## FIRST PARISH CAMBRIDGE, MA

### DEMOLITION EXTERIOR ELEVATIONS

Project number	1802
Date	06-12-2020
Drawn by	DM
Checked by	DT

D-201

Scale AS NOTED