

# Wusong Road - Sign Proposal

2 Bennett St. Cambridge MA, 02138 & 112 Mt. Auburn St. Cambridge MA, 02138

Sign Location: 112 Mt. Auburn St.

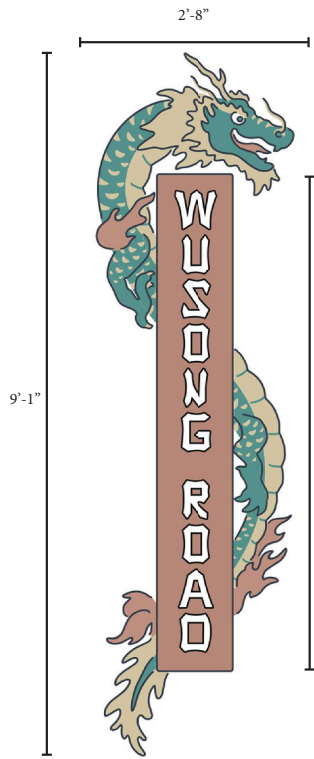
48" from Roof Line

192" from Ground to Base of Sign

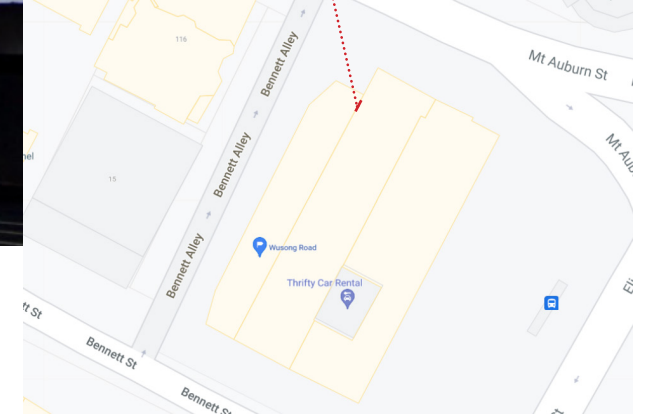
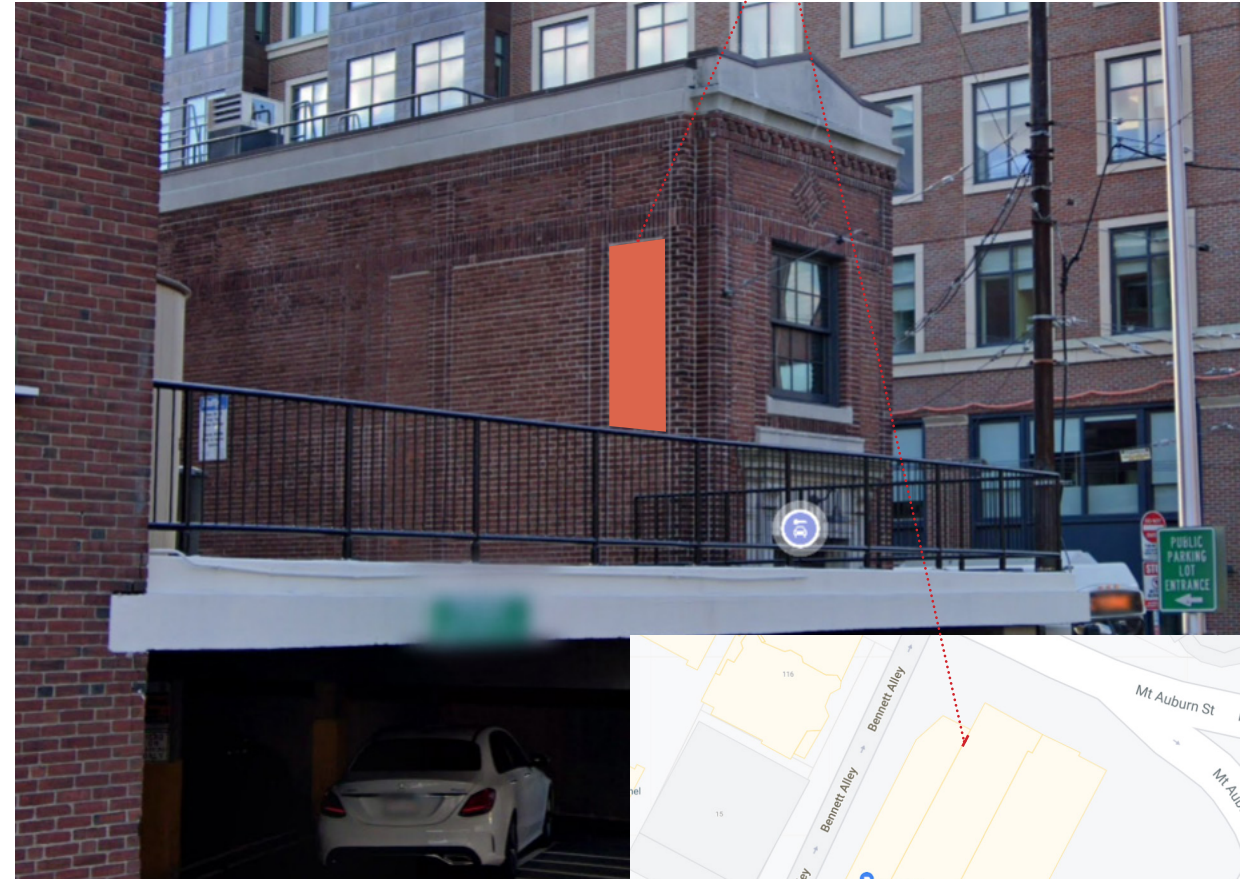
No overhang of public path

Weight (approx) 275lbs

Above 20ft due to Garage Obstruction



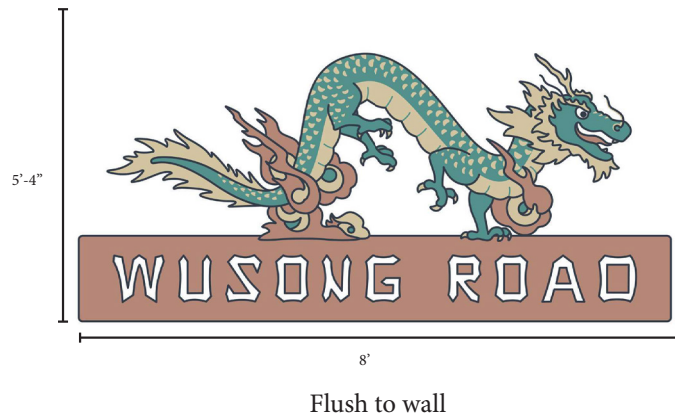
Flush to wall



# Wusong Road - Sign Proposal Fence

2 Bennett St. Cambridge MA, 02138 & 112 Mt. Auburn St. Cambridge MA, 02138

NOTE: this is pending MBTA approval for clearance of their Utility Post. If we Do Not get approvals the sign will be a straight 11ft next to the utility post (not surrounding it) and the sign will be placed flush on the fence facing the MBTA bus way.



## Existing Conditions

112 Mt. Auburn St. Cambridge MA, 02138

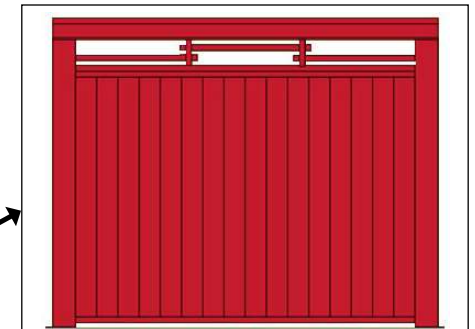
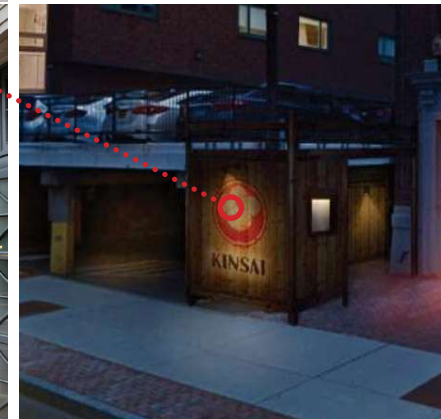
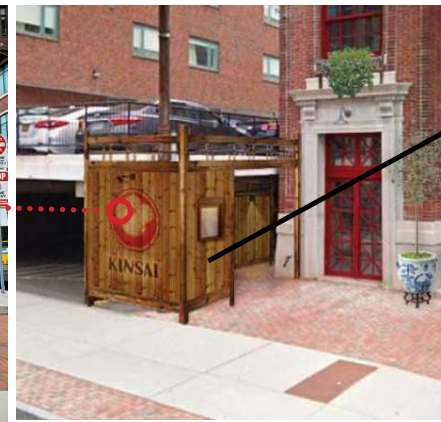


## New Fence Installation

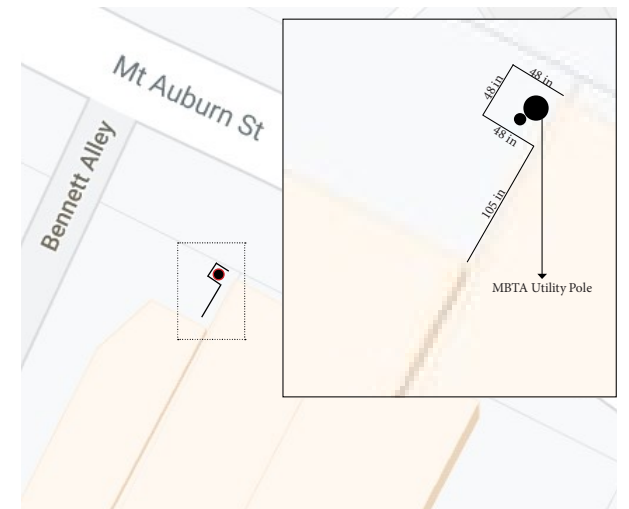
112 Mt. Auburn St. Cambridge MA, 02138

Overall Length: 182.00 in

Overall Height: 110.00 in



Fence Style: 'Imperial' from early 1900's  
NOTE: The below is a SAMPLE of design and not color. We will be keeping a deep natural wood tone with a light stain.



# Wusong Road - Sign Proposal Fence

2 Bennett St. Cambridge MA, 02138 & 112 Mt. Auburn St. Cambridge MA, 02138

## Existing Conditions

112 Mt. Auburn St. Cambridge MA, 02138



## New (3) Bollards Installation

112 Mt. Auburn St. Cambridge MA, 02138

Overall Width: 13.25 in  
Overall Height: 39.00 in  
Weight: 237.00 lb

NOTE: Bollards will be lit up at night.

