

CITY OF CAMBRIDGE | MARCH 26, 2024
DANEHY-NEW STREET CONNECTOR PATH PROJECT
PUBLIC MEETING #3
ADVANCED DESIGN MEETING

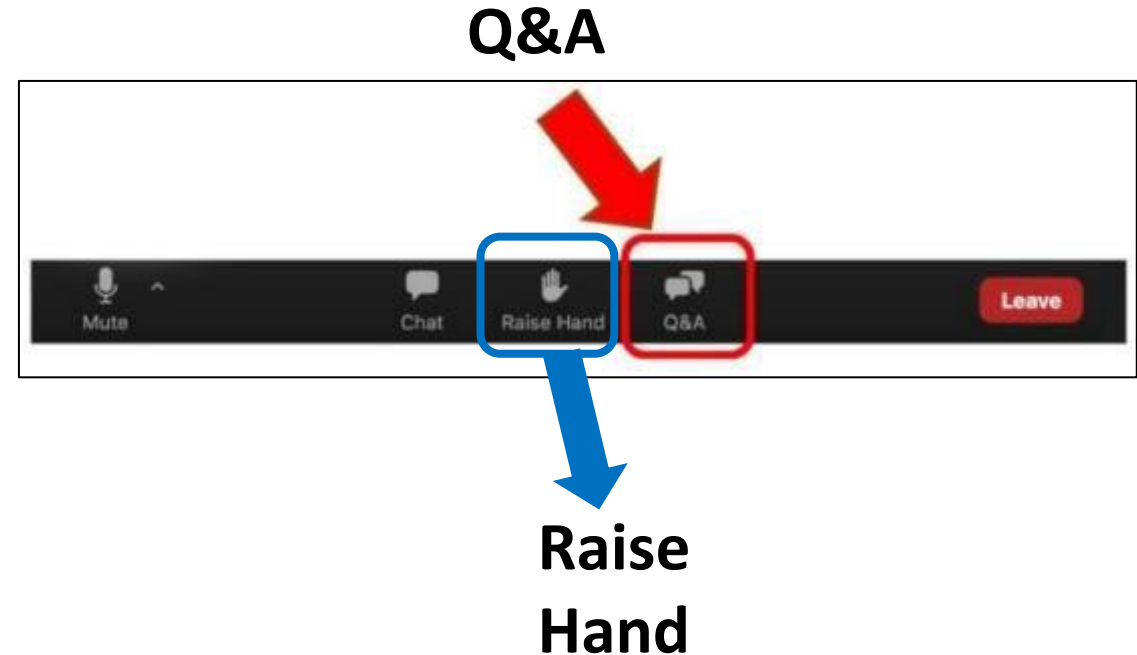




Q & A

Public Input

1. Use the “Q&A” button at bottom center of the Zoom window to submit written questions and comments during the presentation
2. Use the “Raise Hand” button at bottom center of the Zoom window to request to speak at the end of the presentation
 - We will unmute you
 - You will have 1-2 minutes to speak comments and ask questions
3. Please visit the project website to submit comments, sign up for the newsletter, and see upcoming events



 camb.ma/danehyconnector



Agenda

Welcome!

1. General project update

- Schedule, project context maps, project vision and goals, landscape approach, artists
- Ped-Bike bridge crossing the MBTA Fitchburg line update

2. Advanced design review

- Review project graphics and plans
- How we incorporated public feedback

3. Questions and feedback

- Questions will be answered at end of the meeting



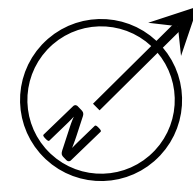
Danehy-New Street Connector Path Schedule

- **Spring 2023:** Conceptual Design Public Meeting
- **Spring 2024:** Advanced Design Public Meeting
- **Summer 2024:** Final Design Submission
- **Fall-Winter 2024:** Out to Bid
- **Spring 2025:** Anticipated Construction Start



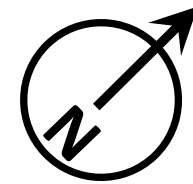


Project Map



Danehy-New Street Multi-Use Path Project Location





Danehy-New Street Multi-Use Path Project Location

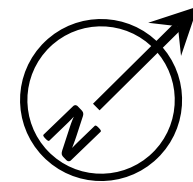
1. Pedestrian Bicycle Bridge Connection: Rindge Ave to Danehy Park





Project Map

CambridgeMA.gov/FitchburgCrossing



Danehy-New Street Multi-Use Path Project Location

1. Pedestrian Bicycle Bridge Connection: Rindge Ave to Danehy Park



2. Bridge design study includes proposed path connection to Sherman Street

LEGEND

●●● Approximate East-West Multi-Use Path Location (North side of Fitchburg Line)

⊙ Approximate Pedestrian-Bike Bridge Crossing Location

↔ Possible Connections to Multi-Use Path

▄▄▄ Possible Connection to Sherman Street (South side of Fitchburg Line)

▬▬▬ Danehy-New Street Connector Path (In Design)

▬ Existing Multi-Use Path Network





Project Vision

THE DANEHY-NEW STREET CONNECTOR PATH DESIGN WILL:

1. Provide a new community corridor eventually connecting North Cambridge to the Alewife area and Danehy Park, Fresh Pond, and the Watertown-Cambridge Greenway





Project Vision

THE DANEHY-NEW STREET CONNECTOR PATH DESIGN WILL:

2. Be set in an **ecologically improved, naturally resilient**, green, landscaped area that will use plants to create natural habitat and cool the immediate area.





Project Vision

THE DANEHY-NEW STREET CONNECTOR PATH DESIGN WILL:

3. Consider **future connections to nearby destinations** and neighborhoods, and will incorporate site amenities to encourage a comfortable, calm, and natural setting





Project Vision

THE DANEHY-NEW STREET CONNECTOR PATH DESIGN WILL:

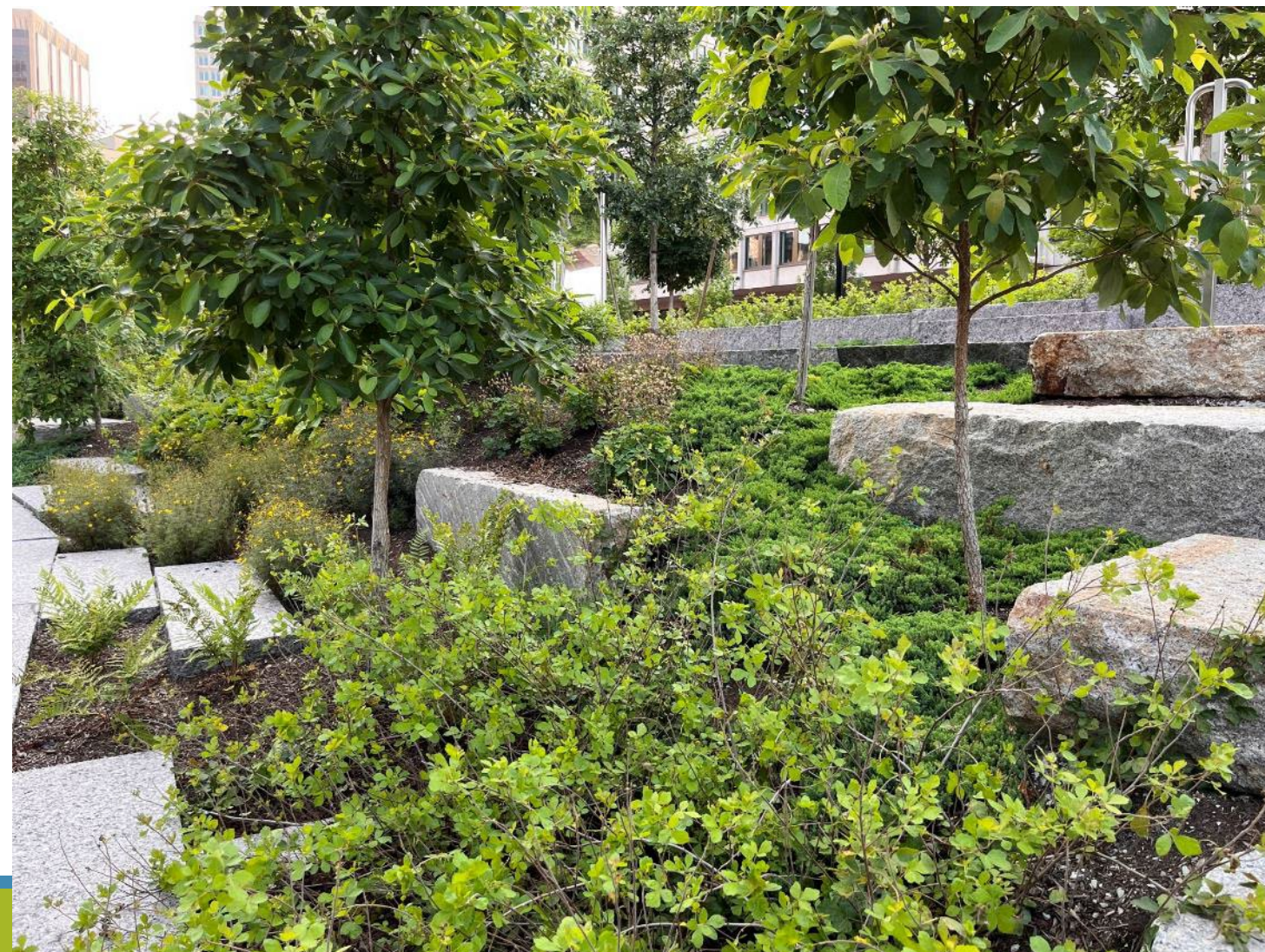
4. Create an **accommodating path space** for users of all ages and abilities





Design Vision - Path Experience

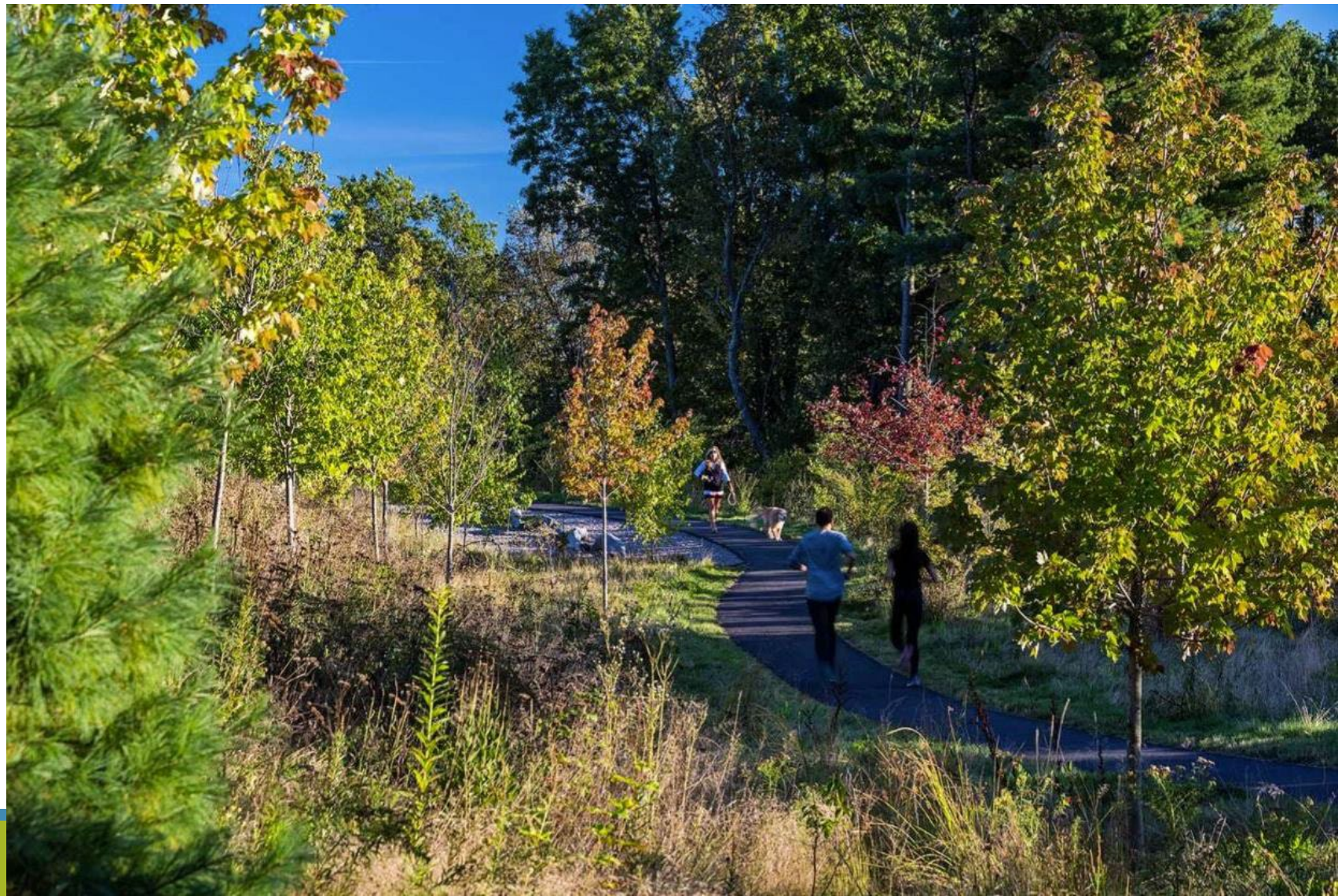
Natural Materials: Granite and stone edging, playful seating





Design Vision - Planting Character

Native plants, naturalized landscape





Trees

Planned Approach

- Clear out understory and brush, including invasive species
- Work with arborist to preserve healthy and mature trees wherever possible
- Import and amend soils to create ideal growing conditions and to smother the invasive seed bank
- Create a diverse, healthy, tree-lined corridor emphasizing native species

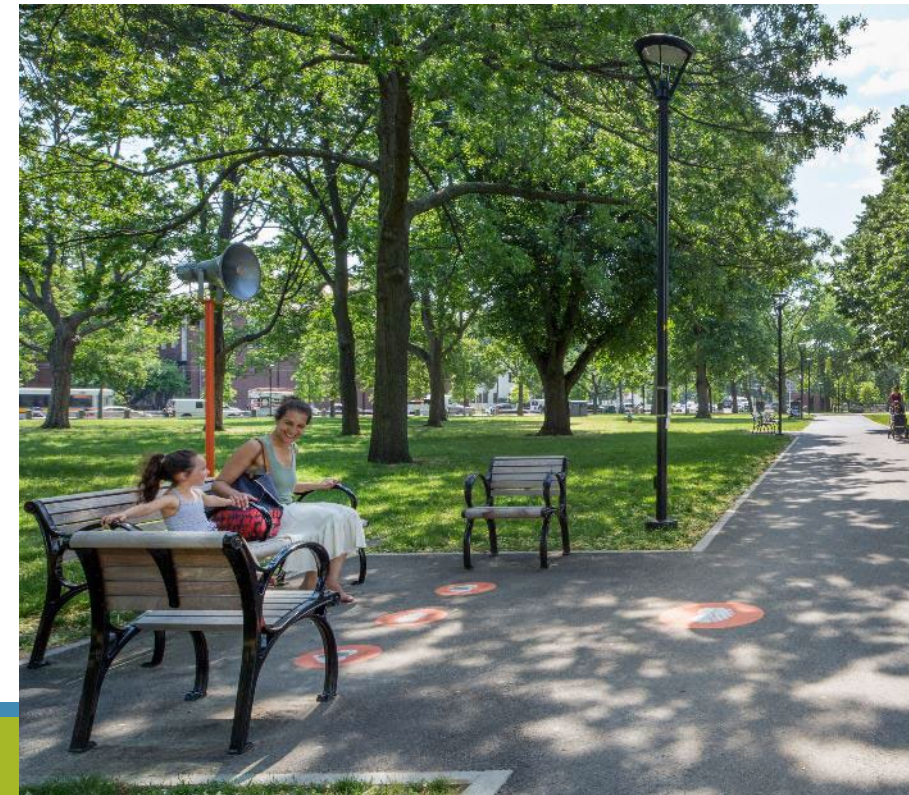


Existing Conditions



Design - Path Furniture

- Water fountain and bottle filler station
- Big Belly trash and recycling containers
- Wood and metal benches
- Pedestrian-scale lighting



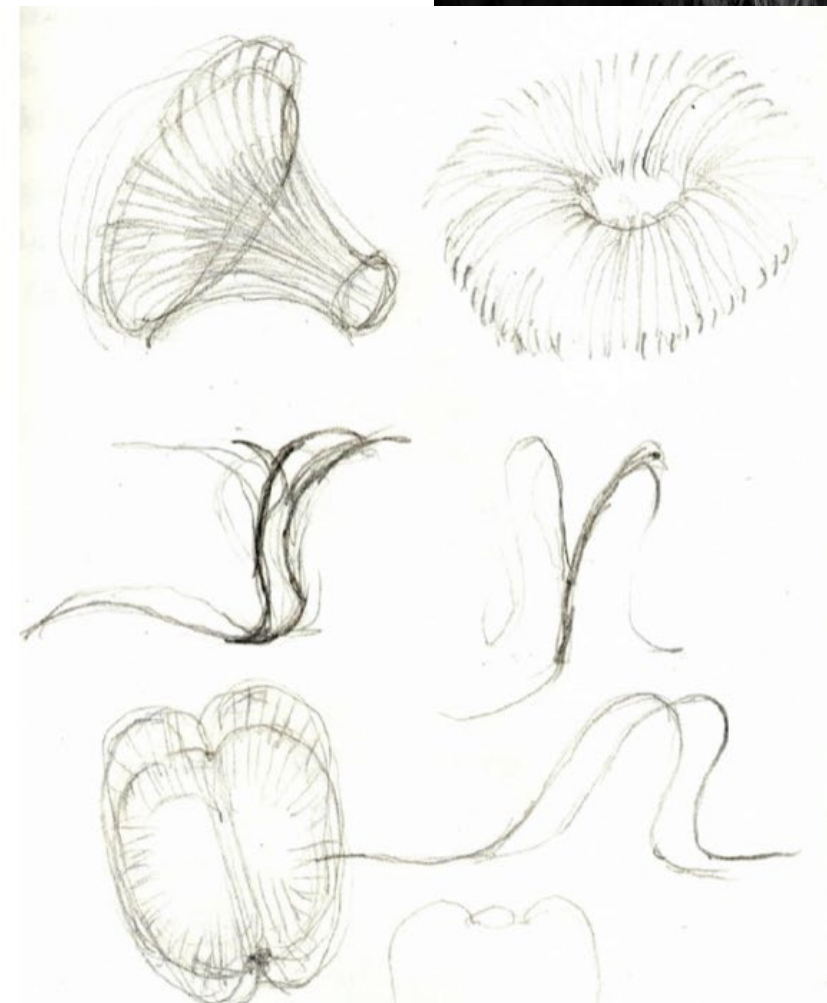


Artists



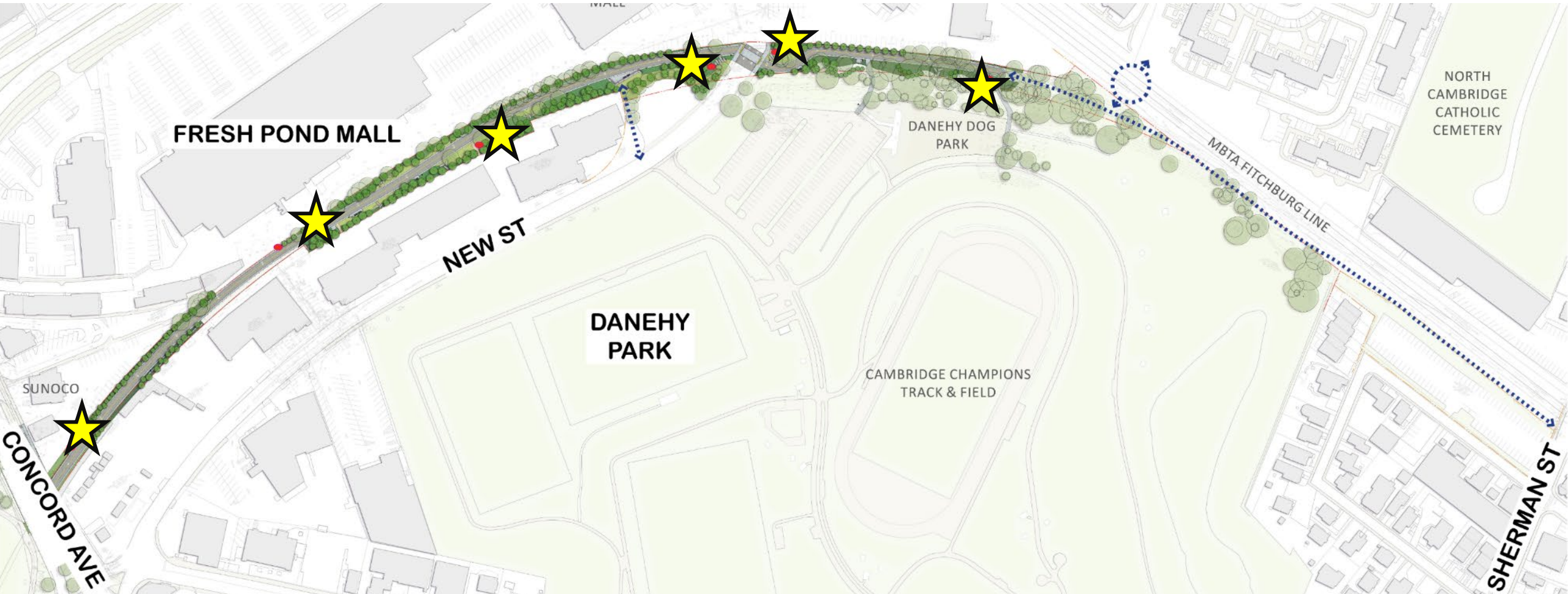
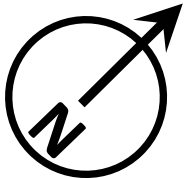
Art Concepts Update

- City Percent for Art ordinance
- Jin Choi and Thomas Shine
- Sculptural elements, inspired by the remnants of the rail tracks in the ground
- Some taller pieces will be visually striking



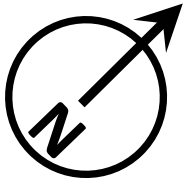


Possible Art Locations





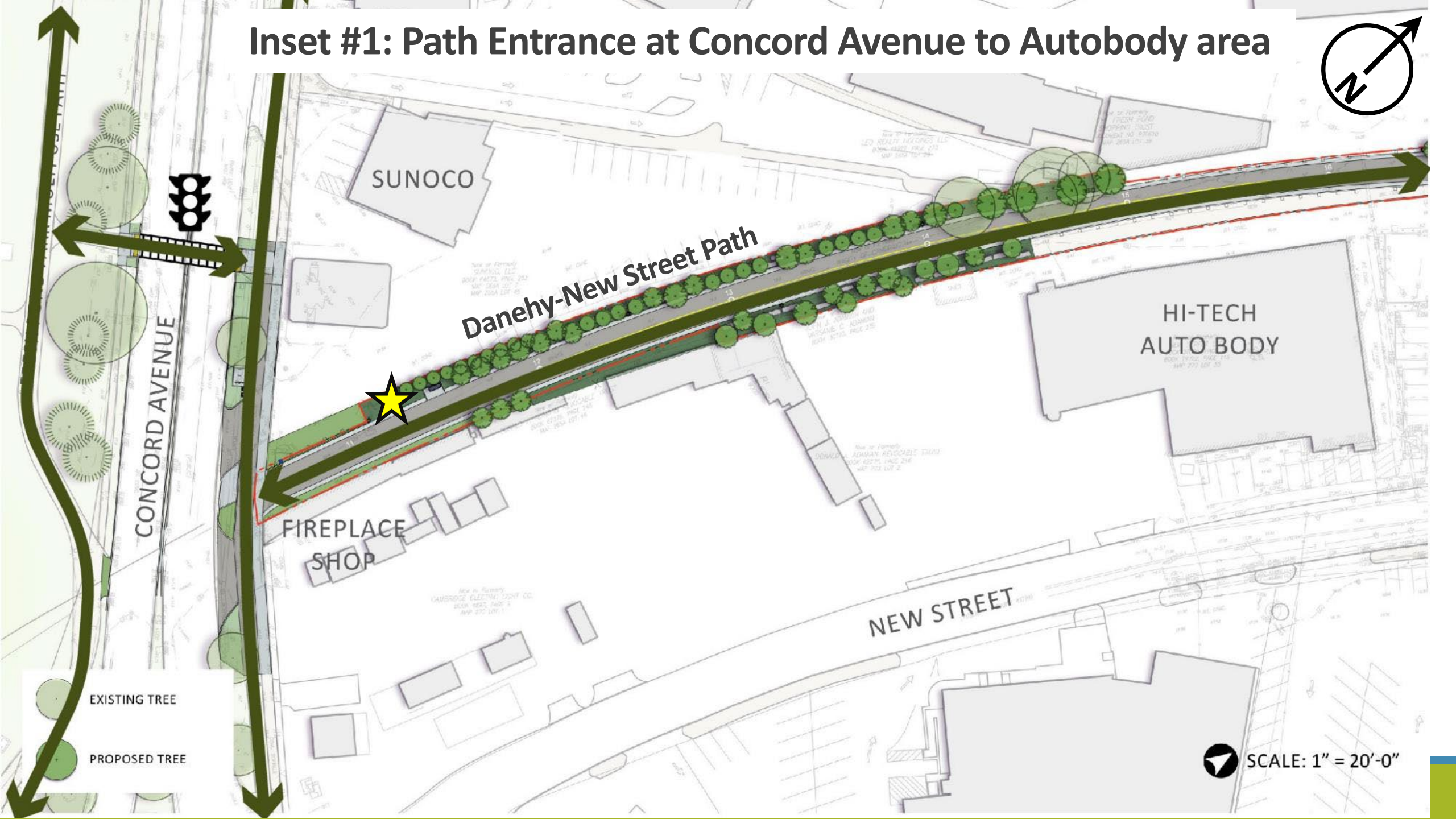
Project Map



Inset #1: Path Entrance at Concord Avenue to Autobody area



Inset #1: Path Entrance at Concord Avenue to Autobody area



SUNOCO

Danehy-New Street Path

HI-TECH
AUTO BODY

FIREPLACE
SHOP

NEW STREET

CONCORD AVENUE

- EXISTING TREE
- PROPOSED TREE

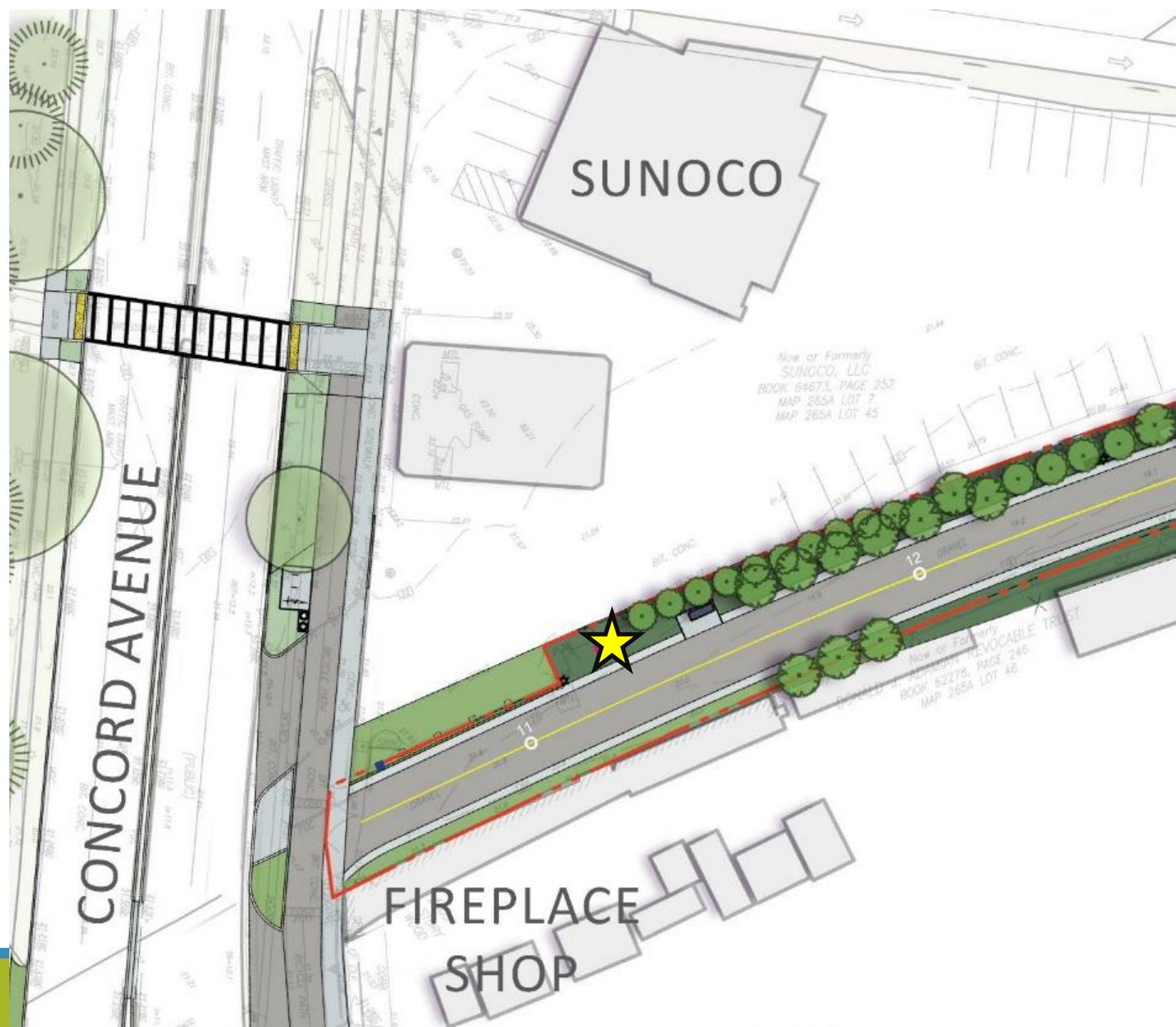
SCALE: 1" = 20'-0"



Concord Ave Crossing

Proposed

- Create a wider pedestrian and bicycle crossing area
- Some accessibility improvements, tactile warning strips, new pedestrian crossing push buttons





Concord Ave Crossing

Proposed

- New paving along a portion of sidewalk and two-way bicycle facility
- Seeking to close a gap in the median to discourage crossing there
- Working with DCR on review and approval





Concord Ave Path Entrance

Existing Conditions

- Large curb cut where former tracks crossed the road
- No grade change from road to future path entrance
- Cobble stones and flush curbing are no longer needed





Concord Ave Path Entrance Rendering

Proposed

- Signage
- Curbing
- Fencing
- Landscaping
- Pavement markings
- Maintenance vehicle access





Fencing

Wood Guardrail Fencing

- Along edge of Sunoco property, and autobody property
- Ongoing discussions with Mall property to remove chain link and install wooden guardrail

Stockade Fencing

- Limited sections of stockade fencing to provide visual screen from some neighboring properties

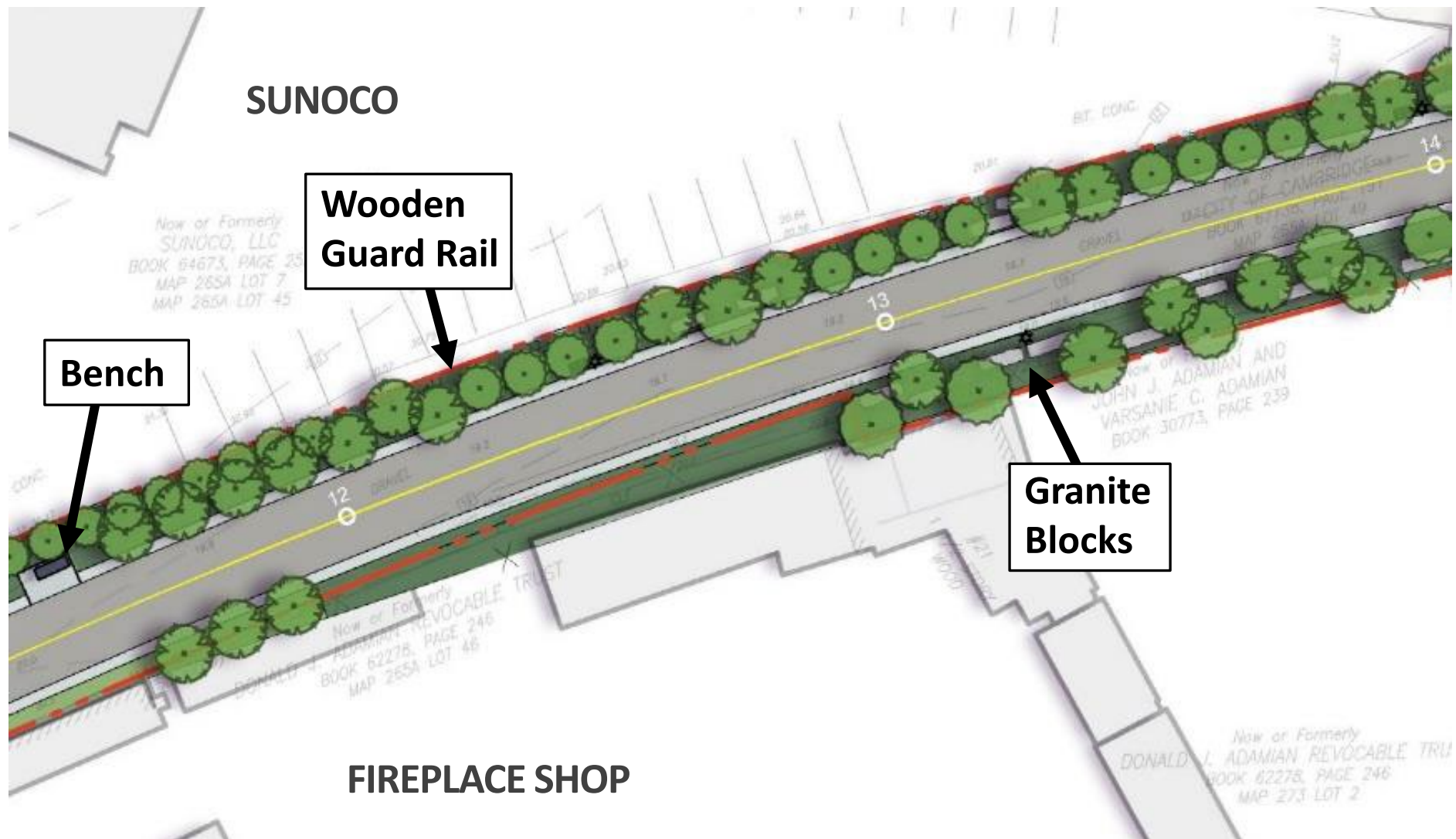




Service Station Area

Proposed

- Lighting
- Landscaping, trees
- Artwork
- 14' paved multi-use path





Auto Body Area

Existing Conditions

Looking north

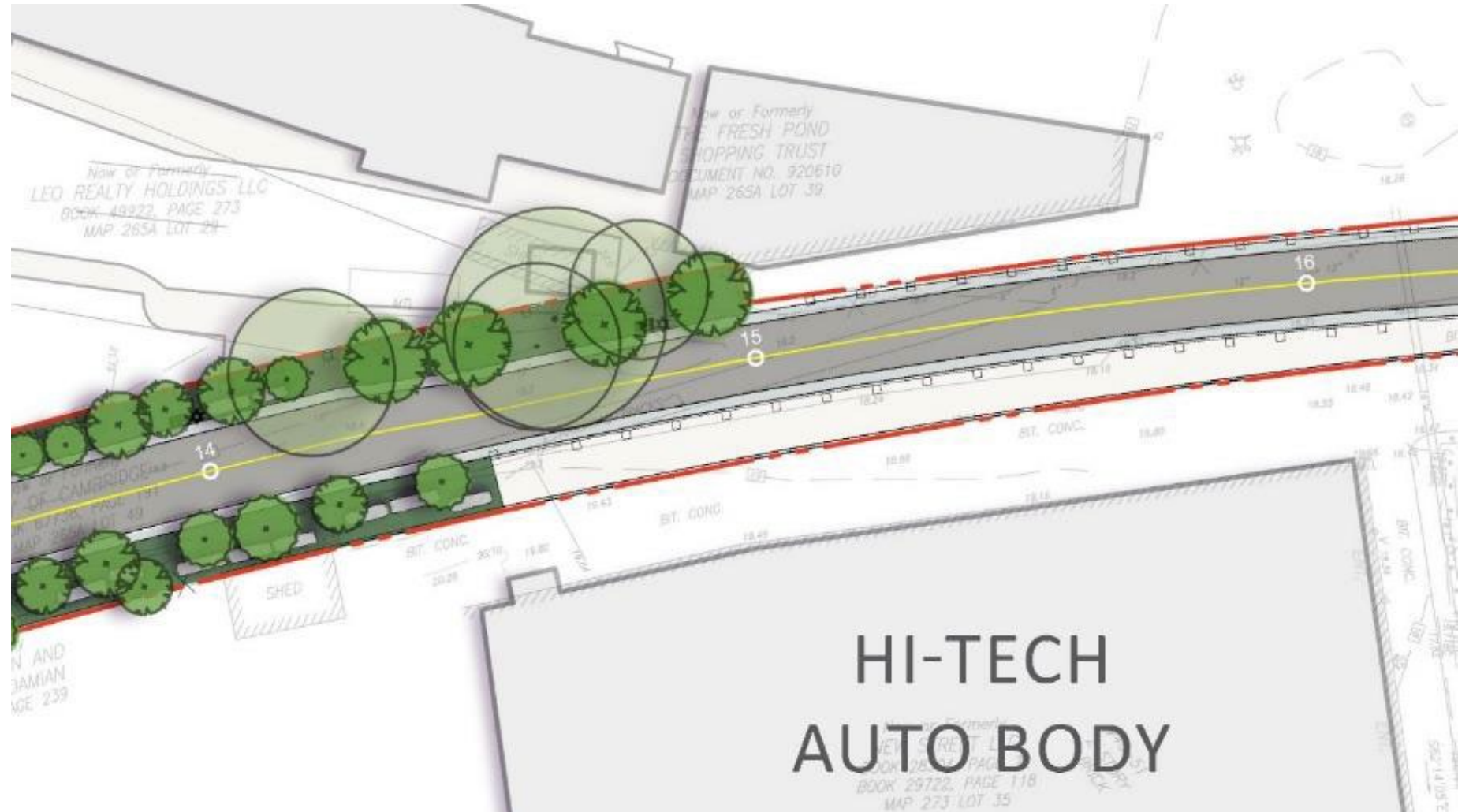




Auto Body Area

Proposed

- 12' paved multi-use path
- Create a clear and safe multi-use path area separate from auto body operations
- Wooden guardrail between path and auto body area



Fresh Pond Mall Property

City of Cambridge Property

Auto Body Property

PROPERTY LINE

PROPERTY LINE

Multi-Use Path



EXISTING FENCE TO BE REMOVED
PROPOSED FENCE
EXISTING GRADE

WOOD GUARDRAIL
EXISTING GRADE

2' ← 12' → 2'



2'-0" CLEAR ZONE
9"
12'-0" MULTI-USE PATH
2'-0" CLEAR ZONE

+/- 25'-6" CITY OWNED PROPERTY

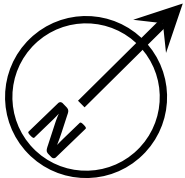
+/- 16'-10" 51 NEW STREET PROPERTY

FRESH POND MALL

51 NEW STREET PROPERTY



Project Map



Inset #2: Behind 77 and 87 New Street



Inset #2: Behind 77 and 87 New Street





Behind 77 and
87 New Street

Existing Conditions

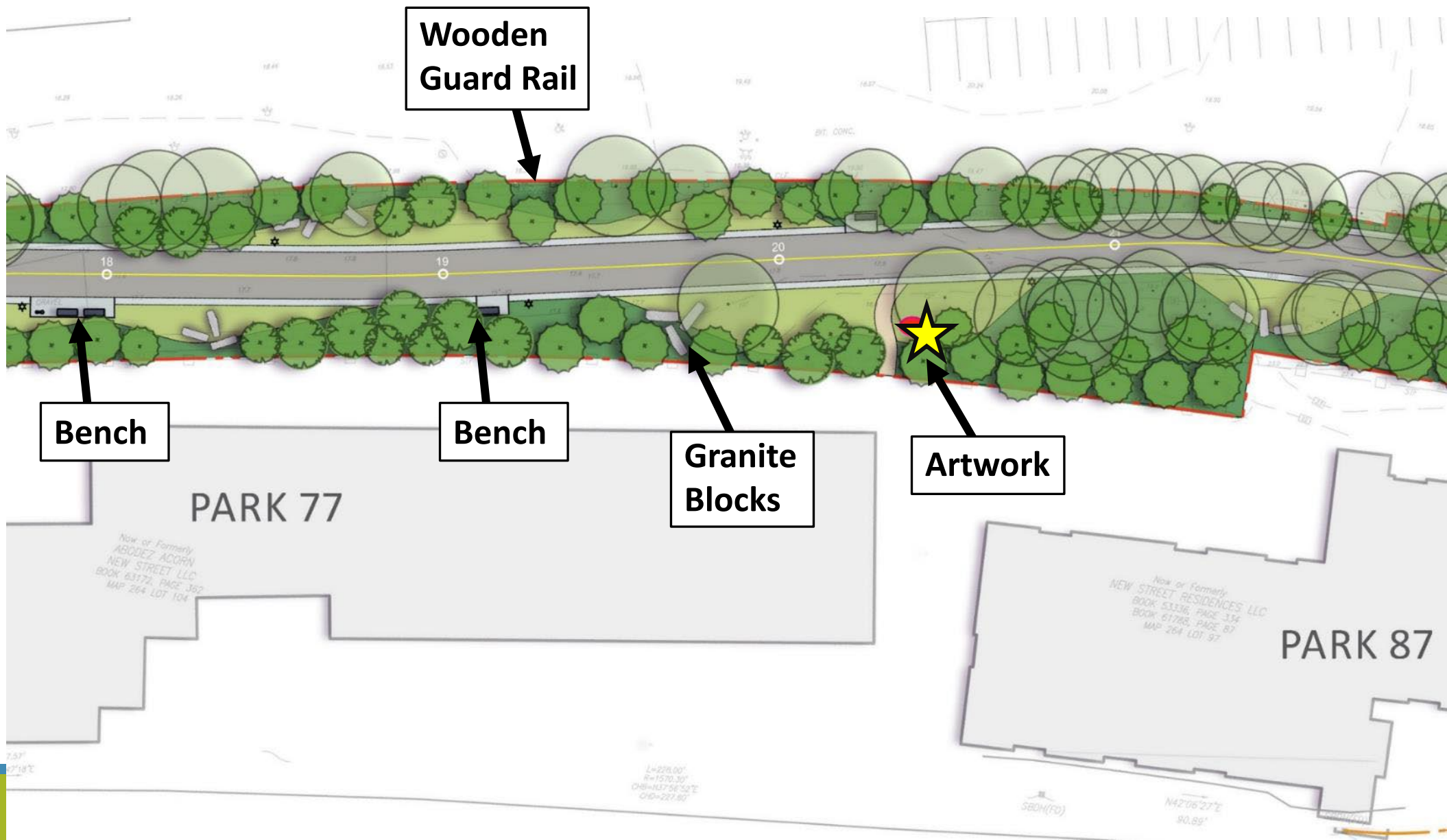
Looking north



Behind 77 and 87 New Street

Proposed

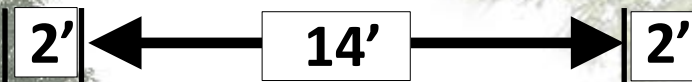
- Fencing
- Trees/plantings



PROPERTY LINE

PROPERTY LINE

Multi-Use Path



PROPOSED FENCE
EXISTING FENCE
TO BE REMOVED

EXISTING FENCE
EXISTING GRADE



17'-0"

2'-0"
CLEAR
ZONE

14'-0"
MULTI-USE PATH

2'-0"
CLEAR
ZONE

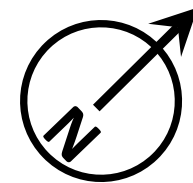
15'-2"

+/- 50'-2"
CITY OWNED PROPERTY

+/- 11'-10"
77 NEW STREET PROPERTY



Project Map



Inset #3: New Street Path Crossing



Inset #3: New Street path crossing area

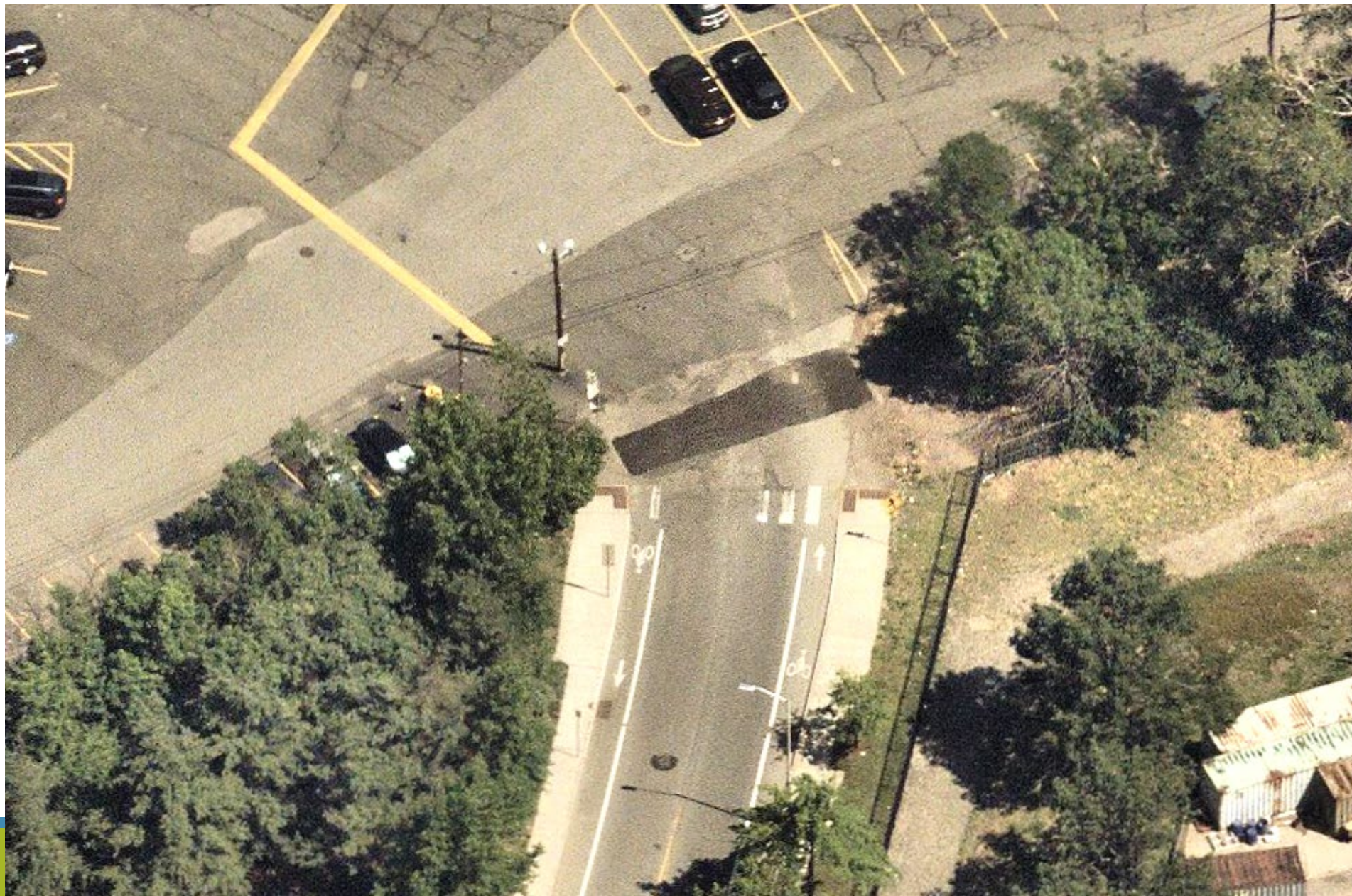




Raised Path Crossing at New Street

Update

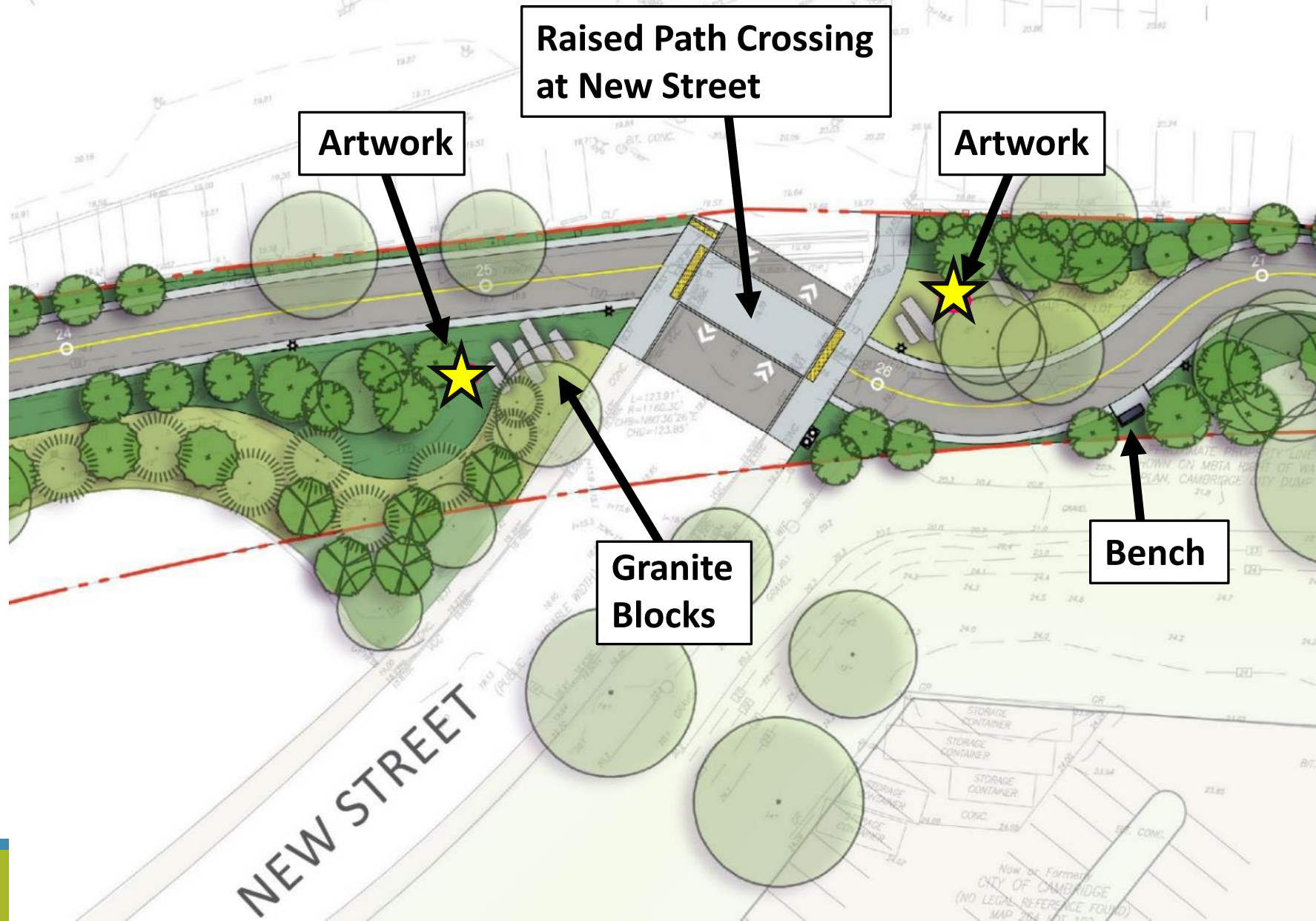
- Rail tracks have been removed from New Street



Raised Path Crossing at New Street

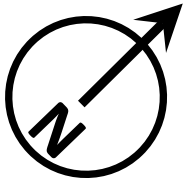
Proposed

- Perpendicular crossing
- Informal seating on each side
- Light poles near crossing
- Plantings and trees





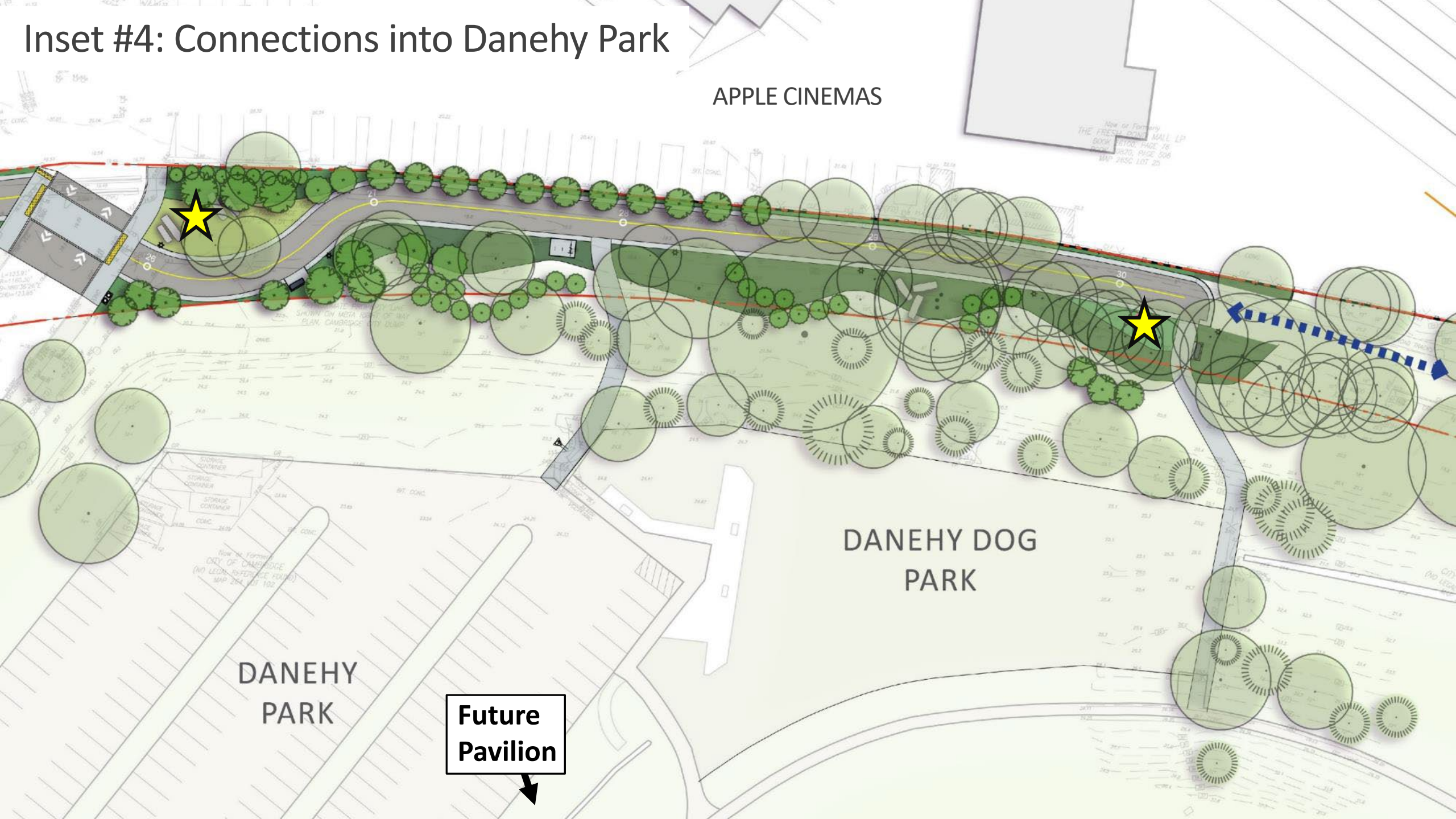
Project Map



Inset #4: Connections into Danehy Park



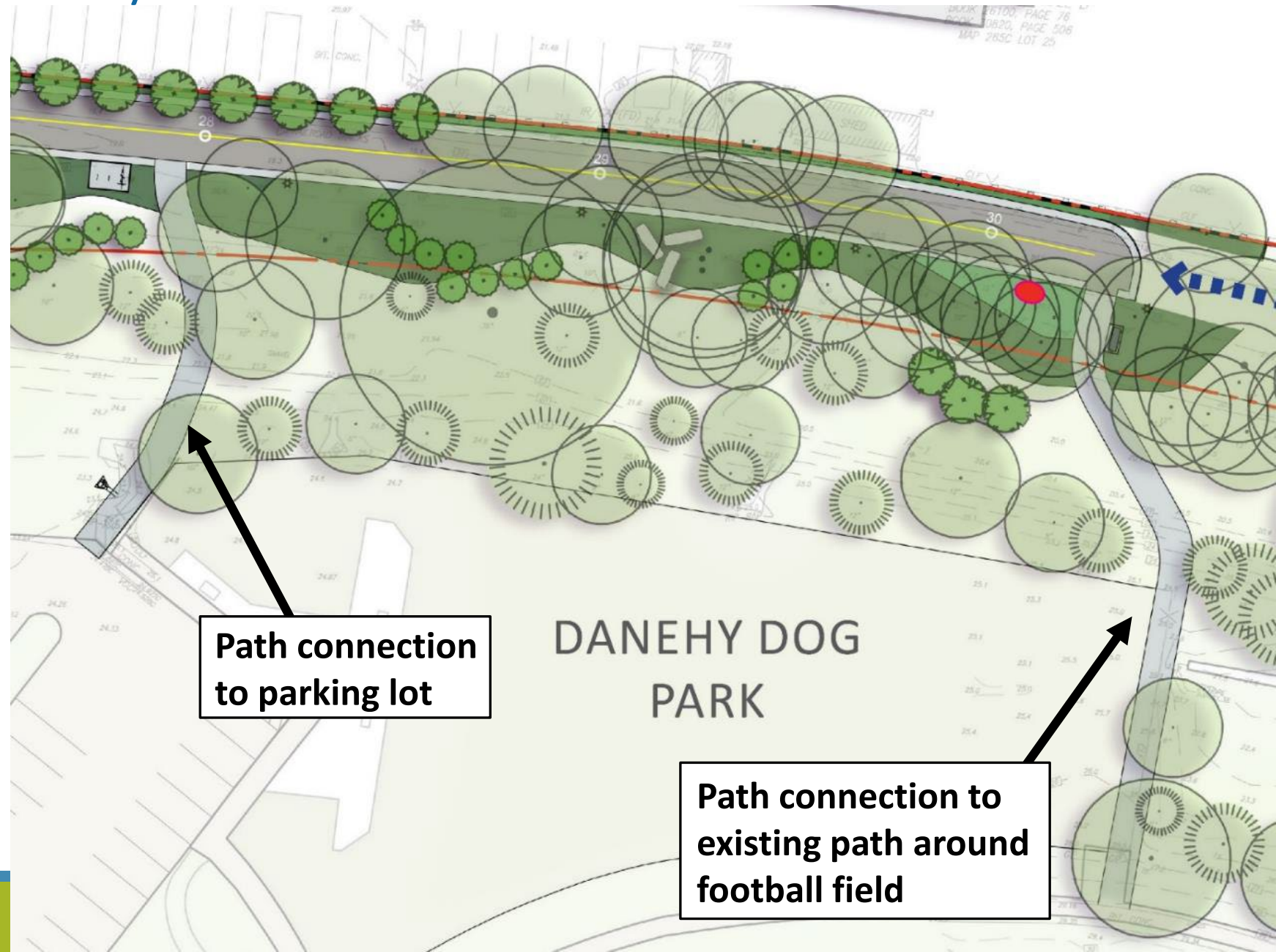
Inset #4: Connections into Danehy Park



Connections into Danehy Park

Proposed

- 14' paved multi-use path
- Two path connections into Danehy Park area
- Connects to parking lot & interior perimeter walkway
- Path ends at this location until Fitchburg Crossing project



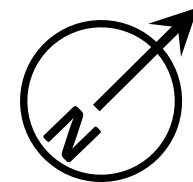
Path connection to parking lot

Path connection to existing path around football field



Adjacent Studies Underway

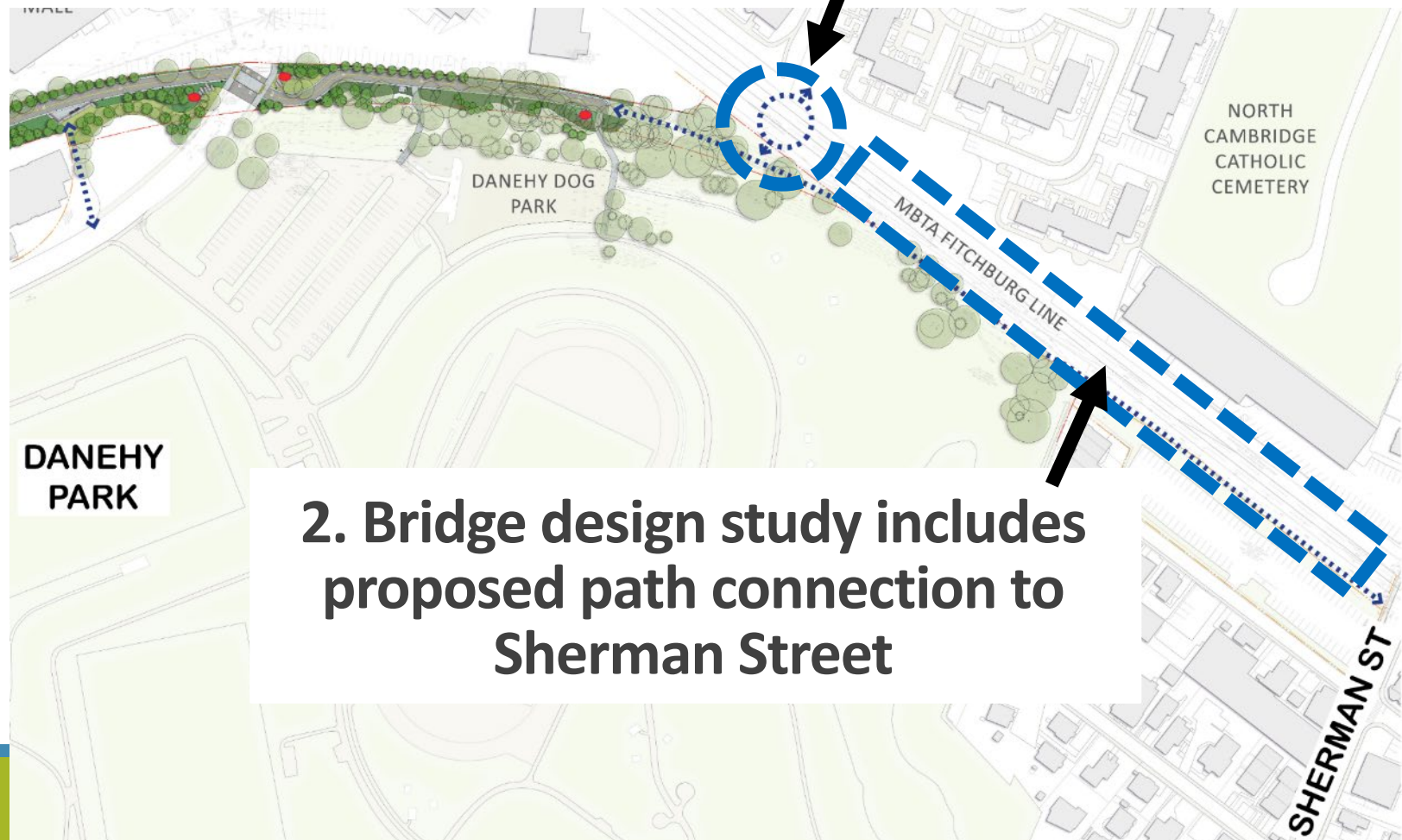
CambridgeMA.gov/FitchburgCrossing



Fitchburg Crossing Bridge Design

- March 13, 2024 grant award announcement - \$2.4m for design
- The pedestrian and bicycle bridge project will review connections to Sherman Street

1. Pedestrian Bicycle Bridge Connection: Rindge Ave to Danehy Park



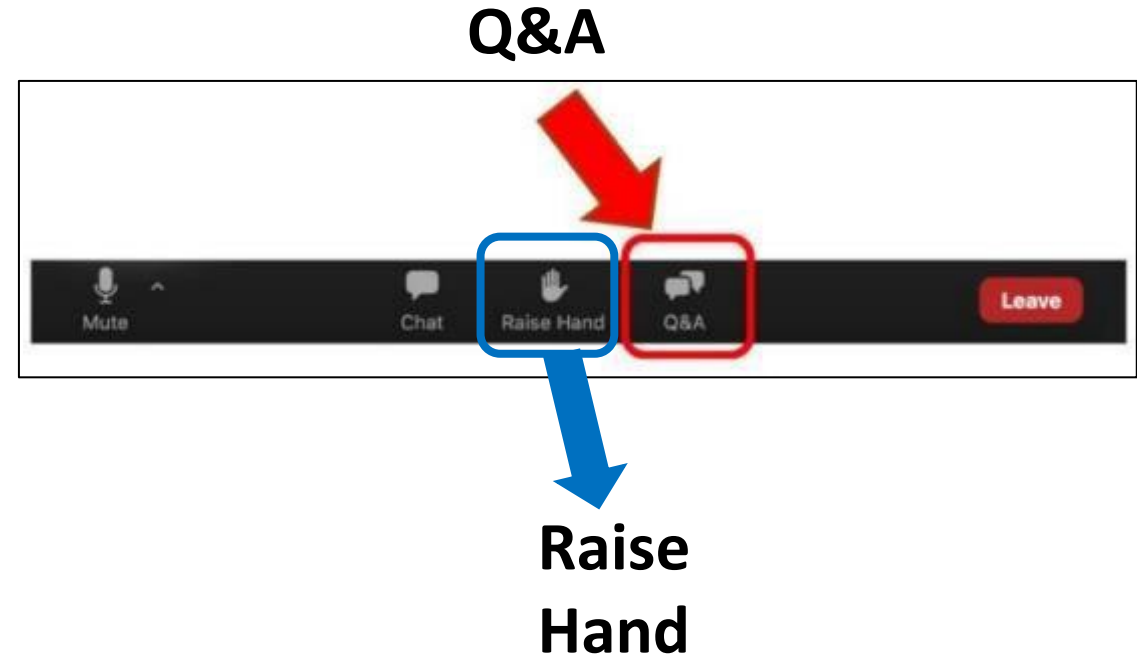
2. Bridge design study includes proposed path connection to Sherman Street



Q & A

Feedback

1. Use the “**Q&A**” button at bottom center of the Zoom window to submit written questions and comments
2. Use the “**Raise Hand**” button at bottom center of the Zoom window to request to speak
 - We will unmute you
 - You will have 1-2 minutes to speak comments and ask questions
3. Please visit the project website to submit comments, sign up for the newsletter, and see upcoming events



 camb.ma/danehyconnector



Thank You

CITY OF CAMBRIDGE | MARCH 26, 2024
DANEHY-NEW STREET CONNECTOR PATH PROJECT
PUBLIC MEETING #3

COMMUNITY DEVELOPMENT DEPARTMENT

Charlie Creagh, AICP
Transportation Project Planner
ccreagh@cambridgema.gov

Gary Chan
Neighborhood Planner
gchan@cambridgema.gov

Bill Deignan
Senior Transportation Program Manager
wdeignan@cambridgema.gov

DEPARTMENT OF PUBLIC WORKS

Kevin Beuttell
Supervising Landscape Architect
kbeuttell@cambridgema.gov

TRAFFIC, PARKING & TRANSPORTATION

Stephen Meuse, PE
Traffic Engineer
smeuse@cambridgema.gov

LEGEND

- Existing multi-use path
- Multi-use path in design or under construction

