



**King Open School
Traffic Management Plan
Summer 2018-Summer 2019**

Attn: Davida Flynn
Rich-KBE Joint Venture
29 Crafts Street
Newton, Mass 02458
RE: King Open School, Cambridge, Ma

Schedule:

Phase 1-4: July 2018-August 2018

Phase 5-6: Spring/Summer 2019
(See approximate dates on Phases)

King Open School Cambridge Street Catch Basin Install Sequence Plan PHASE 1

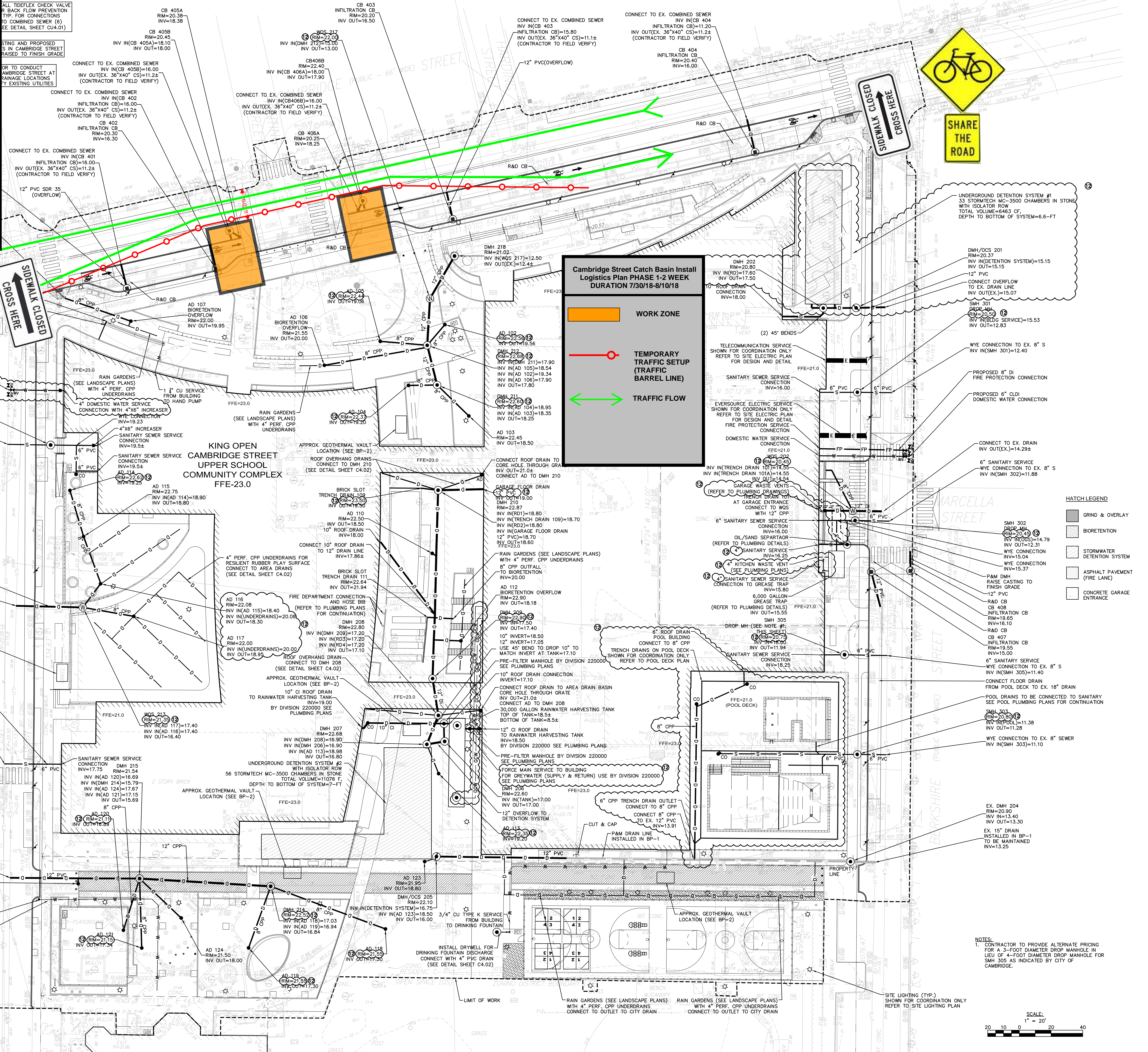
During phase 1 United Civil will be installing CB405A, CB405B, CB406A, CB406B and all associated piping as shown in the area shaded ORANGE.

Working hours will be between 7:00AM and 3:30PM. Road plates will be installed and traffic barrels will be removed at the working area allowing the road to be opened up and normal traffic flow after 3:30PM daily and on weekends.

Trenches will be temporarily patched once utilities are installed until Phase 4 (Spring 2019)

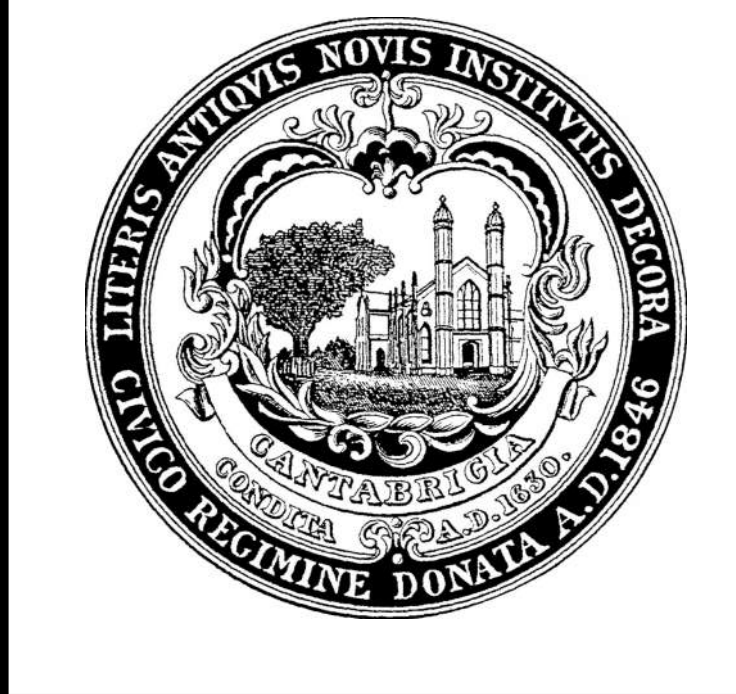
Two police details will be in road during working hours

Catch Basin structures will be left low and temporarily paved over until Spring 2019 Roadwork (Phase 5)



HATCH LEGEND

	GRIND & OVERLAY
	BIORETENTION
	STORMWATER DETENTION SYSTEM
	ASPHALT PAVEMENT (FIRE LANE)
	CONCRETE GARAGE ENTRANCE



City of Cambridge
 King Open & Cambridge Street Upper Schools & Community Complex
 Cambridge, MA 02139

ARCHITECT: WILLIAM BARN ASSOCIATES, ARCHITECTS, INC.
 10 WEST PLAZA SUITE 1000
 BOSTON, MASSACHUSETTS 02118
 T: 617.623.3535

MEP/FP/SECURITY/TELECOM CONSULTING ENGINEERS INC.
 370 HUNTINGTON AVENUE
 BOSTON, MASSACHUSETTS 02118
 T: 608.998.5700

STRUCTURAL ENGINEER: LEMUS/BERK CONSULTANTS
 198 SOLDIERS FIELD ROAD
 BOSTON, MASSACHUSETTS 02135
 T: 617.868.1200

CIVIL: NITESH ENGINEERING
 2 CENTER PLAZA SUITE 400
 BOSTON, MASSACHUSETTS 02108
 T: 617.338.0063

LANDSCAPE: COPPIN WELLS DESIGN GROUP
 LANDSCAPE ARCHITECTS & PLANNERS
 160 BOYLSTON STREET, 3RD FLOOR
 BOSTON, MA 02116
 T: 617.654.8000

POOL: AQUATIC DESIGN GROUP
 2220 FARADAY AVENUE
 CAMBRIDGE, MA 02142
 T: 760.438.8400

ADVISORIAL: AERENTH
 25 MOUNTAIN STREET
 CAMBRIDGE, MA 02138
 T: 617.499.8000

GENERAL NOTES:

- COORDINATE UTILITIES WITH GEOTHERMAL WELLS INSTALLED IN BP-2.

REVISIONS:

ISSUE	DATE	REVISION
1	3/30/17	SUPPLEMENT 1
2	5/24/17	BULLETIN #009/PR #006
3	6/28/17	BULLETIN #012/PR #008
4	7/11/17	BULLETIN #016/PR #010
5	10/16/17	BULLETIN #028/PR #020
6	10/18/17	BULLETIN #031/PR #022
7	10/30/17	BULLETIN #022/PR #016
8	10/30/17	BULLETIN #034/AS #010
9	12/18/17	BULLETIN #043/PR #028
10	12/18/17	BULLETIN #044/PR #029
11	01/17/18	BULLETIN #048/PR #033

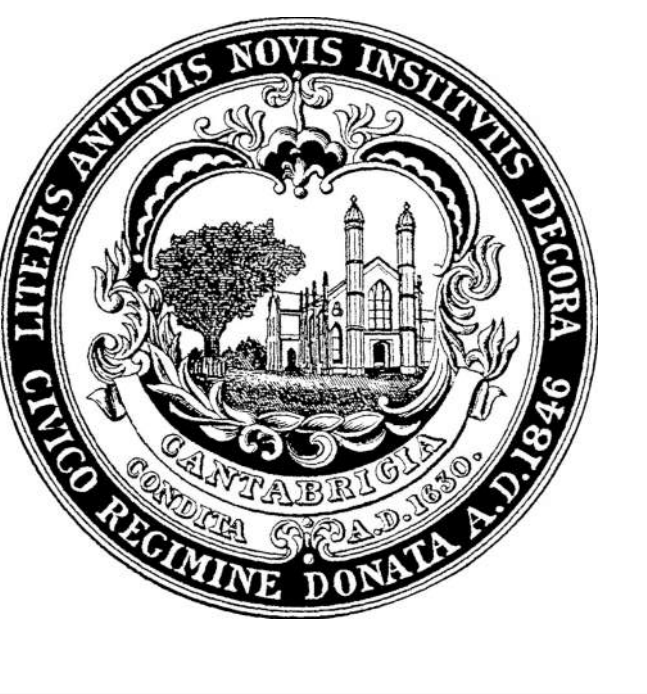
BID PACKAGE 4: UNDERGROUND UTILITIES FOUNDATIONS, STRUCTURAL STEEL & GRADING

PROJECT	TRUE	SCALE	DATE	DRAWING NUMBER
NORTH 42°22'18.97"N 71°05'23.67"W Cambridge, MA 02139		1" = 20'	3/21/2017	C2.02

UTILITY PLAN

DRAWN BY: RPL
 CHECKED BY: AAG
 SCALE: 1"=20'
 DATE: 3/21/2017
 DRAWING NUMBER: C2.02

© 2014 WILLIAM BARN ASSOCIATES, ARCHITECTS, INC.



City of Cambridge

King Open & Cambridge Street Upper Schools & Community Complex

Cambridge, MA 02139

ARCHITECT: WILLIAM BANN ASSOCIATES, ARCHITECTS, INC.
10 WEST MAIN STREET, SUITE 1000
BOSTON, MASSACHUSETTS 02109
T: 617.623.3470 F: 617.623.3400

IN ASSOCIATION WITH:
ARONSTREET INC.
10 WEST OFFICE SQUARE, SUITE 700N
BOSTON, MASSACHUSETTS 02109
T: 617.623.3555

MEP/FP/SECURITY/TELECOM:
GARCIA CALOJA DESIGN
CONSULTING ENGINEERS INC.
370 HUNTINGTON AVENUE
N. BAYVIEW, BOSTON, MA 02215
T: 608.998.5700

STRUCTURAL ENGINEER:
LEMONSBERGER CONSULTANTS
198 SOLDIERS FIELD ROAD
BOSTON, MASSACHUSETTS 02135
T: 617.868.1300

CIVIL:
NETCH ENGINEERING
2 CENTER PLAZA, SUITE 400
BOSTON, MA 02108-1008
T: 617.338.0063

LANDSCAPE:
COPPIN WELLS DESIGN GROUP
LANDSCAPE ARCHITECTS & PLANNERS
160 BOSTON STREET, 3RD FLOOR
BOSTON, MA 02116
T: 617.654.8000

POOL:
AQUATIC DESIGN GROUP
2220 FARADAY AVENUE
CAMBRIDGE, MA 02142
T: 760.438.8400

ADDRESS/MAIL:
AEDITION
25 WILKINSON STREET
CAMBRIDGE, MA 02138
T: 617.499.8000

GENERAL NOTES:

- 1. COORDINATE UTILITIES WITH GEOTHERMAL WELLS INSTALLED IN BP-2.

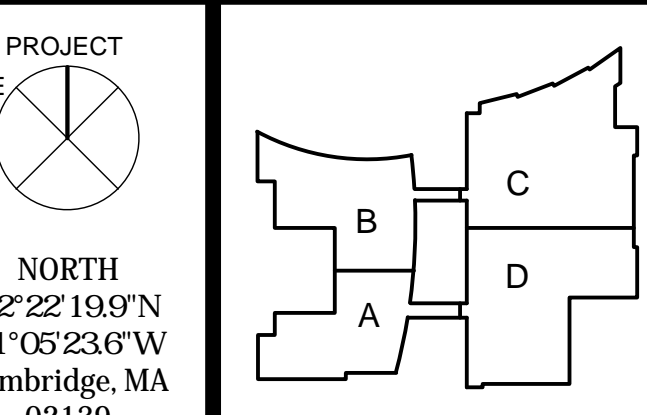
HATCH LEGEND

[Hatch]	GRIND & OVERLAY
[Hatch]	BIORETENTION
[Hatch]	STORMWATER DETENTION SYSTEM
[Hatch]	ASPHALT PAVEMENT (FIRE LANE)
[Hatch]	CONCRETE GARAGE ENTRANCE

REVISIONS:

ISSUE	DATE	REVISION
1	3/30/17	SUPPLEMENT 1
2	5/24/17	BULLETIN #009/PR #006
3	6/28/17	BULLETIN #012/PR #008
4	7/11/17	BULLETIN #016/PR #010
5	10/16/17	BULLETIN #028/PR #020
6	10/18/17	BULLETIN #031/PR #022
7	10/30/17	BULLETIN #022/PR #016
8	10/30/17	BULLETIN #034/AS #010
9	12/18/17	BULLETIN #043/PR #028
10	12/18/17	BULLETIN #044/PR #029
11	01/17/18	BULLETIN #048/PR #033

BID PACKAGE 4: UNDERGROUND UTILITIES FOUNDATIONS, STRUCTURAL STEEL & GRADING



PROJECT:	TRUE
DRAWING TITLE:	UTILITY PLAN
DRAWN BY:	RPL
CHECKED BY:	LAG
SCALE:	1"=20'
DATE:	3/21/2017
DRAWING NUMBER:	

C2.02

King Open School Cambridge Street Catch Basin Install Sequence Plan PHASE 2

During phase 2 United Civil will be installing CB401, CB402 AND CB403 and all associated piping as shown in the area shaded ORANGE.

Working hours will be between 7:00AM and 3:30PM. Road plates will be installed and traffic barrels will be removed at the working area allowing the road to be opened up and normal traffic flow after 3:30PM daily and on weekends.

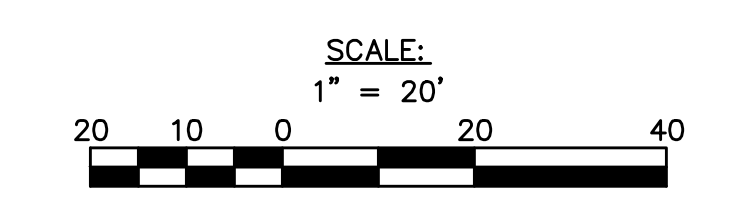
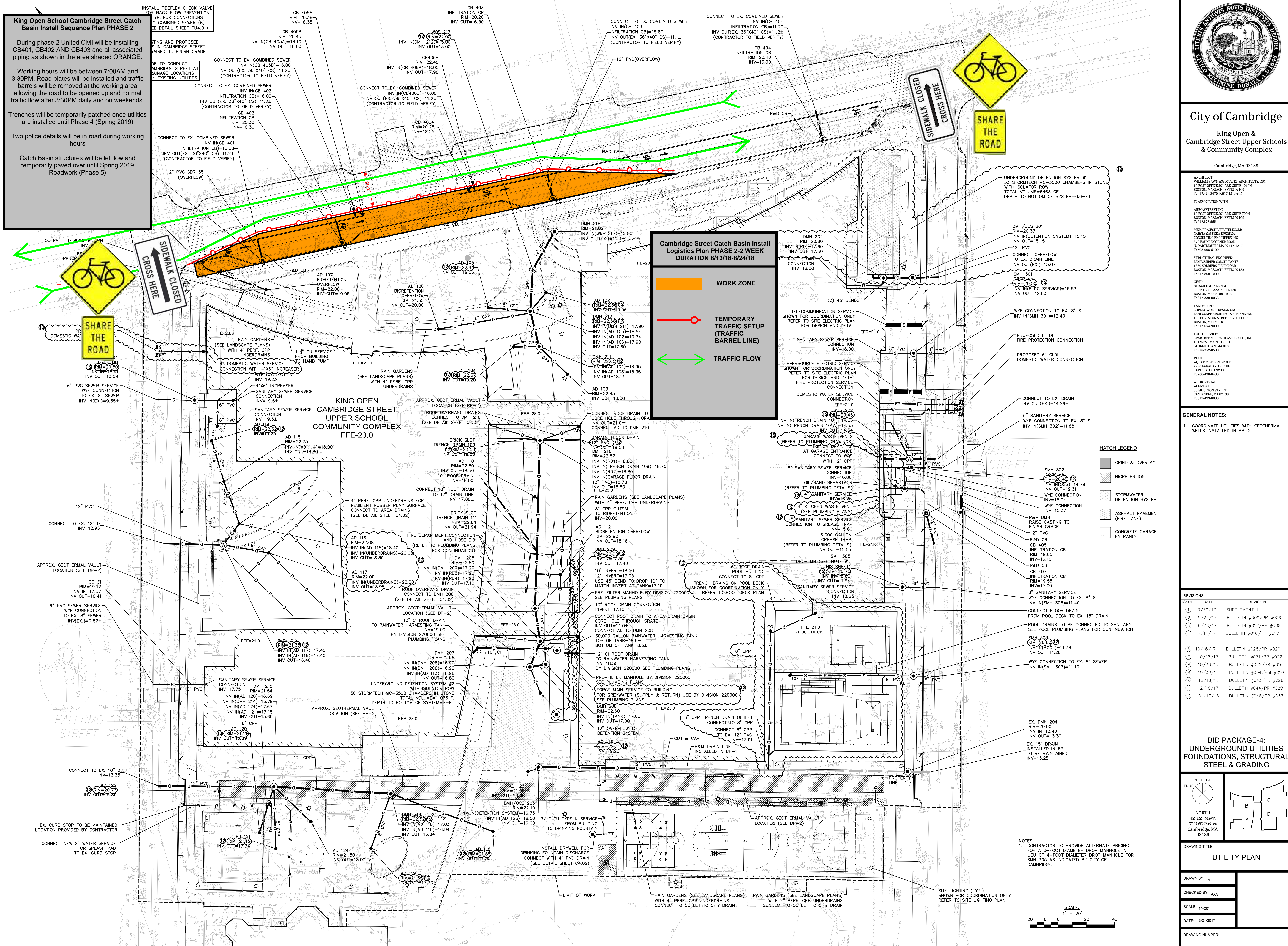
Trenches will be temporarily patched once utilities are installed until Phase 4 (Spring 2019)

Two police details will be in road during working hours

Catch Basin structures will be left low and temporarily paved over until Spring 2019 Roadwork (Phase 5)

Cambridge Street Catch Basin Install Logistics Plan PHASE 2-2 WEEK DURATION 8/13/18-8/24/18

- WORK ZONE
- TEMPORARY TRAFFIC SETUP (TRAFFIC BARREL LINE)
- TRAFFIC FLOW



NOTES:
1. CONTRACTOR TO PROVIDE ALTERNATE PRICING FOR A 3-FOOT DIAMETER DROP MANHOLE IN LIEU OF 4-FOOT DIAMETER DROP MANHOLE FOR SMH 305 AS INDICATED BY CITY OF CAMBRIDGE.

King Open School Cambridge Street Catch Basin Install Sequence Plan PHASE 3

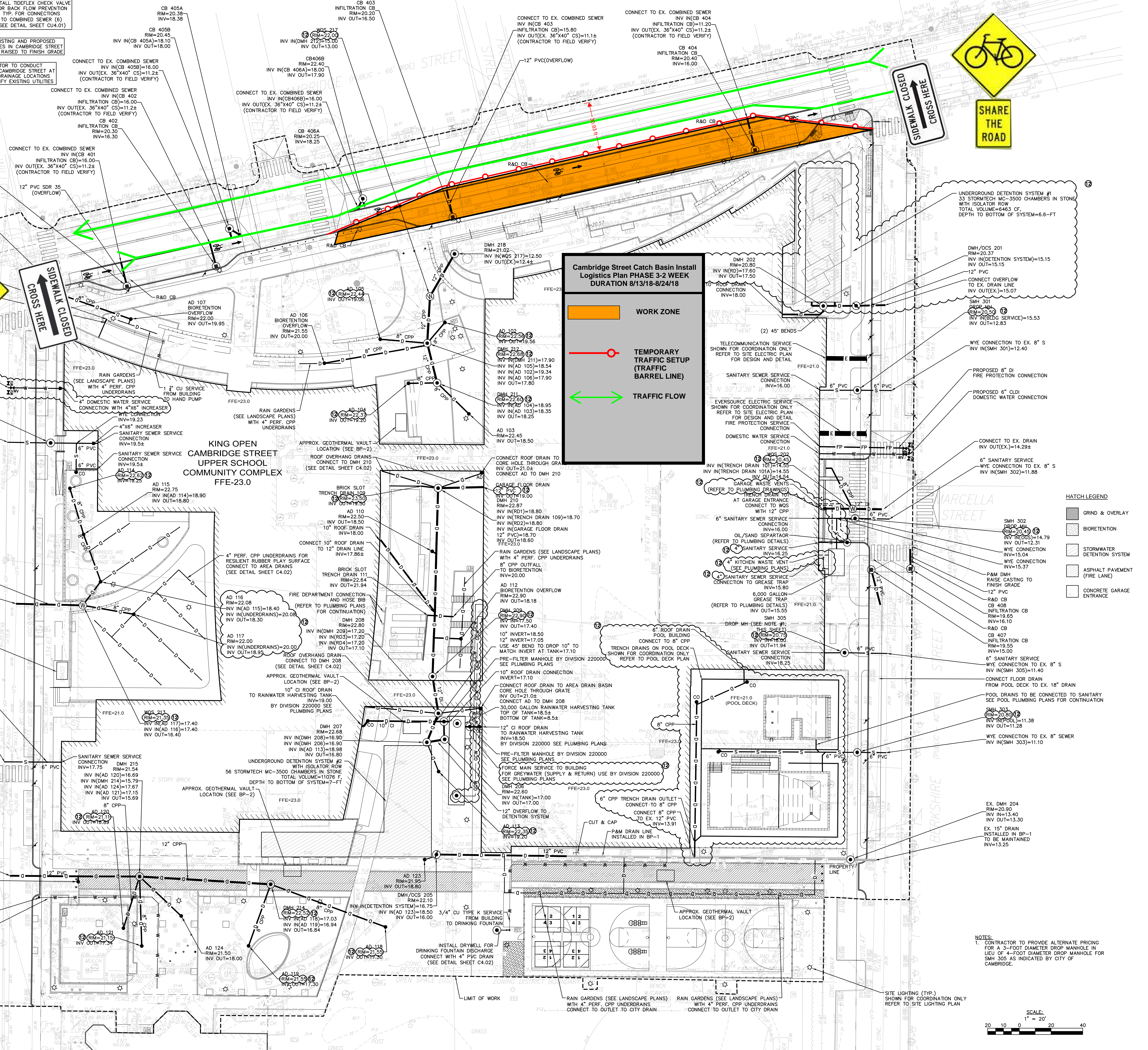
During phase 3 United Civil will be installing CB403 and CB404 and all associated piping as shown in the area shaded ORANGE.

Working hours will be between 7:00AM and 3:30PM. Road plates will be installed and traffic barrels will be removed at the working area allowing the road to be opened up and normal traffic flow after 3:30PM daily and on weekends.

Trenches will be temporarily patched once utilities are installed until Phase 4 (Spring 2019)

Two police details will be in road during working hours

Catch Basin structures will be left low and temporarily paved over until Spring 2019 Roadwork (Phase 5)

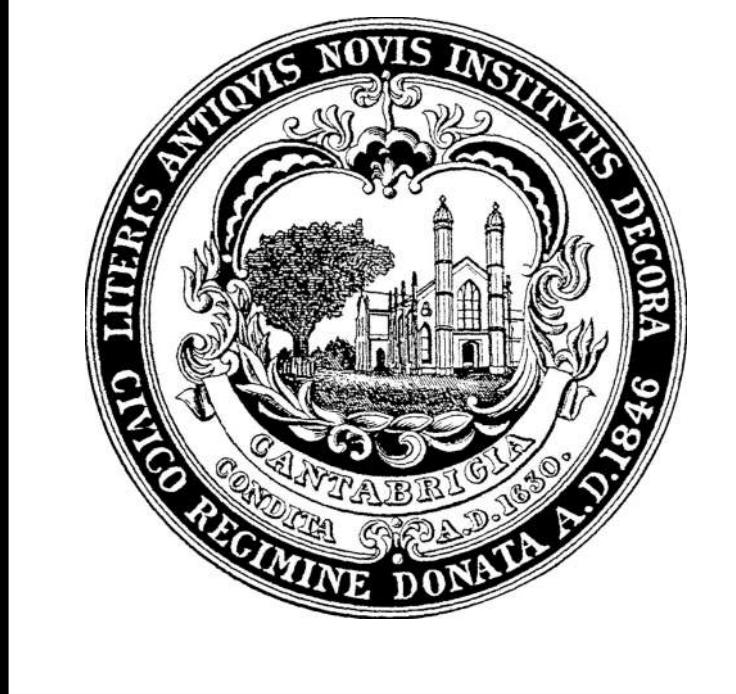


Cambridge Street Catch Basin Install Logistics Plan PHASE 3-2 WEEK DURATION 8/13/18-8/24/18

- WORK ZONE
- TEMPORARY TRAFFIC SETUP (TRAFFIC BARREL LINE)
- TRAFFIC FLOW

HATCH LEGEND

	GRIND & OVERLAY
	BIORETENTION
	STORMWATER DETENTION SYSTEM
	ASPHALT PAVEMENT (FIRE LANE)
	CONCRETE GARAGE ENTRANCE



City of Cambridge
 King Open & Cambridge Street Upper Schools & Community Complex
 Cambridge, MA 02139

ARCHITECT: WILLIAM BANN ASSOCIATES, ARCHITECTS, INC.
 10 WEST FREE SQUARE SUITE 700N
 BOSTON, MASSACHUSETTS 02109
 T: 617.623.3470 F: 617.431.0209

IN ASSOCIATION WITH:
 ABRONSTREET INC.
 10 WEST FREE SQUARE SUITE 700N
 BOSTON, MASSACHUSETTS 02109
 T: 617.623.3555

MEP/FP/SECURITY/TELECOM CONSULTING ENGINEERS INC.
 370 HUNCE CORNER ROAD
 N. BARTHOLOMEW, MA 02457-1217
 T: 508.998.5700

STRUCTURAL ENGINEER: LEMONS/BERK CONSULTANTS
 1380 SOLDIERS FIELD ROAD
 BOSTON, MASSACHUSETTS 02135
 T: 617.868.1200

CIVIL: NITESH ENGINEERING
 2 CENTER PLAZA SUITE 400
 BOSTON, MA 02108-1008
 T: 617.338.0063

LANDSCAPE: COPPEL WELLS DESIGN GROUP
 LANDSCAPE ARCHITECTS & PLANNERS
 160 BOYLSTON STREET, 3RD FLOOR
 BOSTON, MA 02116
 T: 617.654.8000

POOL: AQUATIC DESIGN GROUP
 2220 FARADAY AVENUE
 CAMBRIDGE, MA 02142
 T: 760.438.8400

ADVISORIAL: ALENTHE
 25 MARLTON STREET
 CAMBRIDGE, MA 02138
 T: 617.499.8000

GENERAL NOTES:

- COORDINATE UTILITIES WITH GEOTHERMAL WELLS INSTALLED IN BP-2.

REVISIONS:

ISSUE	DATE	REVISION
1	3/30/17	SUPPLEMENT 1
2	5/24/17	BULLETIN #009/PR #006
3	6/28/17	BULLETIN #012/PR #008
4	7/11/17	BULLETIN #016/PR #010
5	10/16/17	BULLETIN #028/PR #020
6	10/18/17	BULLETIN #031/PR #022
7	10/30/17	BULLETIN #022/PR #016
8	10/30/17	BULLETIN #034/AS #010
9	12/18/17	BULLETIN #043/PR #028
10	12/18/17	BULLETIN #044/PR #029
11	01/17/18	BULLETIN #048/PR #033

BID PACKAGE 4: UNDERGROUND UTILITIES FOUNDATIONS, STRUCTURAL STEEL & GRADING

PROJECT: TRUE

NORTH
 42°22'183"N
 71°05'234"W
 Cambridge, MA 02139

DRAWING TITLE: **UTILITY PLAN**

DRAWN BY: RPL

CHECKED BY: AAG

SCALE: 1"=20'

DATE: 3/21/2017

DRAWING NUMBER:

C2.02

© 2014 WILLIAM BANN ASSOCIATES, ARCHITECTS, INC.

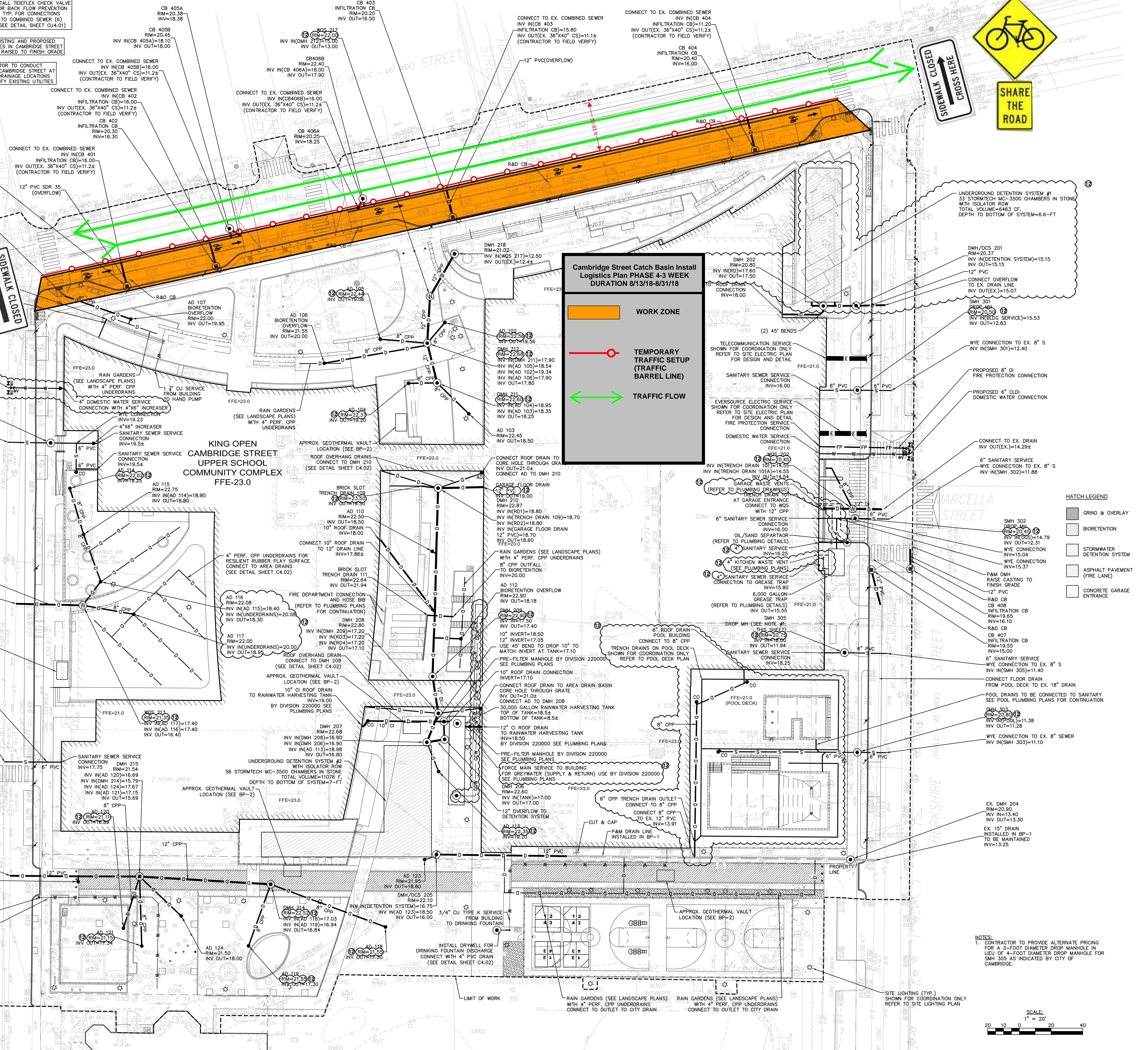
King Open School Cambridge Street Catch Basin Install Sequence Plan PHASE 4-SPRING 2019

During phase 4 United Civil will be removing all of the existing curbing and asphalt and re-installing per the Civil drawings.

Working hours will be between 7:00AM and 3:30PM. THE WORKING AREA SHOWN IN ORANGE WILL BE CLOSED UNTIL WORK IS COMPLETED

Two police details will be in road during working hours

Catch Basin structures will be raised to finish grade at this point

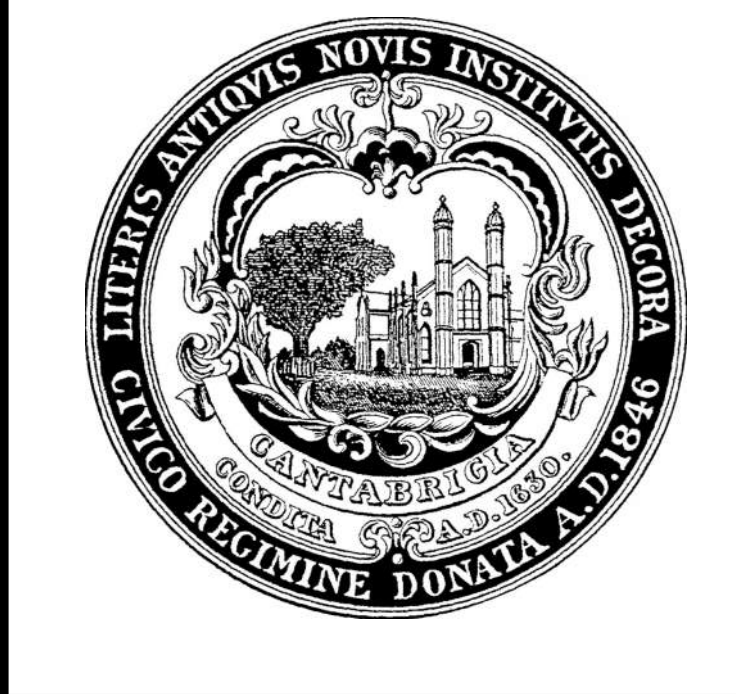


Cambridge Street Catch Basin Install Logistics Plan PHASE 4-3 WEEK DURATION 8/13/18-8/31/18

- WORK ZONE
- TEMPORARY TRAFFIC SETUP (TRAFFIC BARREL LINE)
- TRAFFIC FLOW

HATCH LEGEND

	GRIND & OVERLAY
	BIORETENTION
	STORMWATER DETENTION SYSTEM
	ASPHALT PAVEMENT (FIRE LANE)
	CONCRETE GARAGE ENTRANCE



City of Cambridge
 King Open & Cambridge Street Upper Schools & Community Complex
 Cambridge, MA 02139

ARCHITECT: WILLIAM BANN ASSOCIATES ARCHITECTS INC.
 10 WEST FREE SQUARE SUITE 700N
 BOSTON, MASSACHUSETTS 02109
 T: 617-623-3470 F: 617-623-3470

IN ASSOCIATION WITH:
 ABRONSTREET INC.
 10 WEST FREE SQUARE SUITE 700N
 BOSTON, MASSACHUSETTS 02109
 T: 617-623-3555

MEP/FP/SECURITY/TELECOM CONSULTING ENGINEERS INC.
 370 BALANCE CENTER ROAD
 N. ANDOVER, MA 01861
 T: 978-688-5700

STRUCTURAL ENGINEER:
 LEMUS/BERK CONSULTANTS
 198 SOLDIERS FIELD ROAD
 BOSTON, MASSACHUSETTS 02135
 T: 617-868-1200

CIVIL:
 NITCH ENGINEERING
 2 CENTER PLAZA SUITE 400
 BOSTON, MASSACHUSETTS 02108
 T: 617-338-0063

LANDSCAPE:
 COPPIN WELLS DESIGN GROUP
 LANDSCAPE ARCHITECTS & PLANNERS
 160 ROVELL STREET, 3RD FLOOR
 BOSTON, MA 02118
 T: 617-654-8000

POOL:
 AQUATIC DESIGN GROUP
 2220 FARADAY AVENUE
 CAMBRIDGE, MA 02142
 T: 760-438-8400

ADVISORIAL:
 AEDITION
 25 MARLTON STREET
 CAMBRIDGE, MA 02138
 T: 617-499-8000

GENERAL NOTES:

- COORDINATE UTILITIES WITH GEOTHERMAL WELLS INSTALLED IN BP-2.

REVISIONS:

ISSUE	DATE	REVISION
1	3/30/17	SUPPLEMENT 1
2	5/24/17	BULLETIN #009/PR #006
3	6/28/17	BULLETIN #012/PR #008
4	7/11/17	BULLETIN #016/PR #010
5	10/16/17	BULLETIN #028/PR #020
6	10/18/17	BULLETIN #031/PR #022
7	10/30/17	BULLETIN #022/PR #016
8	10/30/17	BULLETIN #034/AS #010
9	12/18/17	BULLETIN #043/PR #028
10	12/18/17	BULLETIN #044/PR #029
11	01/17/18	BULLETIN #048/PR #033

BID PACKAGE 4: UNDERGROUND UTILITIES FOUNDATIONS, STRUCTURAL STEEL & GRADING

PROJECT	REVISION
TRUE	
NORTH	
42°22'183"N	
71°05'248"W	
Cambridge, MA	
02139	

DRAWING TITLE: UTILITY PLAN

DRAWN BY: RPL

CHECKED BY: AAG

SCALE: 1"=20'

DATE: 3/21/2017

DRAWING NUMBER:

C2.02

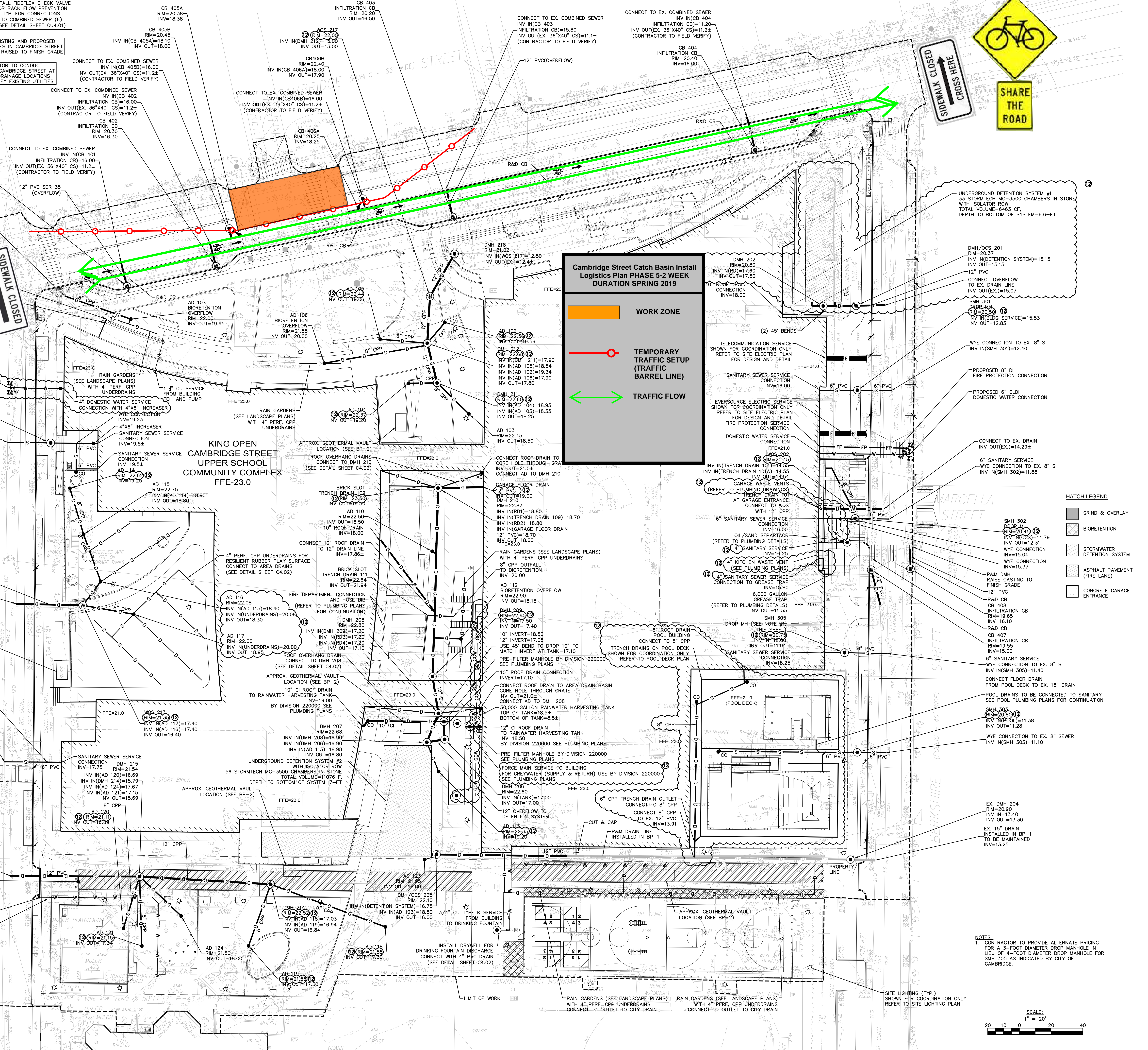
© 2014 WILLIAM BANN ASSOCIATES ARCHITECTS, INC.

King Open School Cambridge Street Catch Basin Install Sequence Plan PHASE 5 SPRING 2019

During phase 5 United Civil will be installing the raised crosswalk in Cambridge Street North Side

Working hours will be between 7:00AM and 3:30PM. THE WORKING AREA SHOWN IN ORANGE WILL BE CLOSED UNTIL WORK IS COMPLETED

Two police details will be in road during working hours

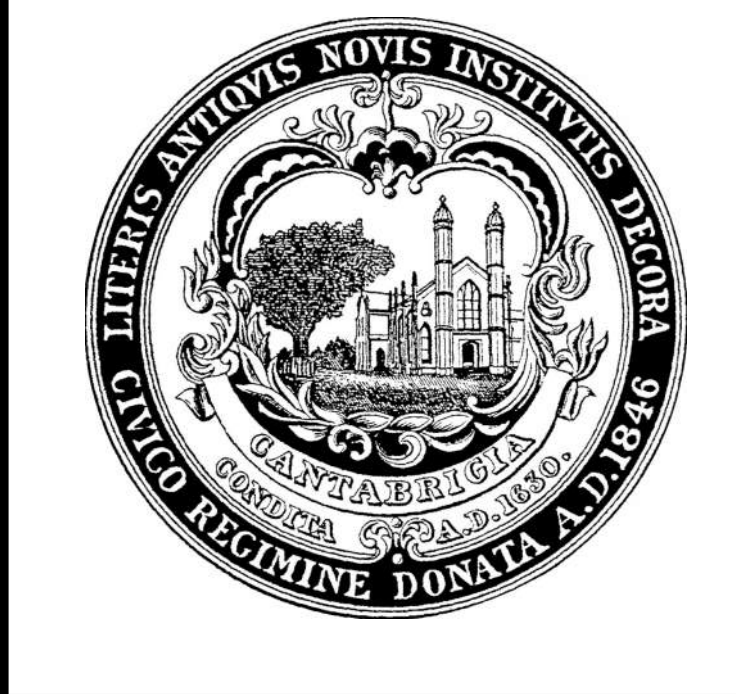


Cambridge Street Catch Basin Install Logistics Plan PHASE 5-2 WEEK DURATION SPRING 2019

- WORK ZONE
- TEMPORARY TRAFFIC SETUP (TRAFFIC BARREL LINE)
- TRAFFIC FLOW

HATCH LEGEND

	GRIND & OVERLAY
	BIORETENTION
	STORMWATER DETENTION SYSTEM
	ASPHALT PAVEMENT (FIRE LANE)
	CONCRETE GARAGE ENTRANCE



City of Cambridge
 King Open & Cambridge Street Upper Schools & Community Complex
 Cambridge, MA 02139

ARCHITECT: WILLIAM BANN ASSOCIATES ARCHITECTS INC.
 10 WEST FREE SQUARE SUITE 700N
 BOSTON, MASSACHUSETTS 02109
 T: 617-623-3470 F: 617-623-3475

IN ASSOCIATION WITH:

ARONSTREET INC.
 10 WEST FREE SQUARE SUITE 700N
 BOSTON, MASSACHUSETTS 02109
 T: 617-623-3555

MEP/FP/SECURITY/TELECOM: GARCIA CALOJA DESIGN CONSULTING ENGINEERS INC.
 370 BALANCE CENTER ROAD
 N. BARTONVILLE, MA 02457-1217
 T: 508-998-5700

STRUCTURAL ENGINEER: LEMONSBERGER CONSULTANTS
 198 SOLDIERS FIELD ROAD
 BOSTON, MASSACHUSETTS 02135
 T: 617-868-1200

CIVIL: NITESH ENGINEERING
 2 CENTER PLAZA SUITE 400
 BOSTON, MASSACHUSETTS 02108
 T: 617-338-0063

LANDSCAPE: COPPIN WELLS DESIGN GROUP
 LANDSCAPE ARCHITECTS & PLANNERS
 160 BOSTON STREET, 3RD FLOOR
 BOSTON, MA 02118
 T: 617-654-8000

POOL: AQUATIC DESIGN GROUP
 2220 FARADAY AVENUE
 CAMBRIDGE, MA 02142
 T: 760-438-8400

ADVISORIAL: AEDITION
 25 MOUNTAIN STREET
 CAMBRIDGE, MA 02138
 T: 617-499-8000

GENERAL NOTES:

- COORDINATE UTILITIES WITH GEOTHERMAL WELLS INSTALLED IN BP-2.

REVISIONS:

ISSUE	DATE	REVISION
1	3/30/17	SUPPLEMENT 1
2	5/24/17	BULLETIN #009/PR #006
3	6/28/17	BULLETIN #012/PR #008
4	7/11/17	BULLETIN #016/PR #010
5	10/16/17	BULLETIN #028/PR #020
6	10/18/17	BULLETIN #031/PR #022
7	10/30/17	BULLETIN #022/PR #016
8	10/30/17	BULLETIN #034/AS #010
9	12/18/17	BULLETIN #043/PR #028
10	12/18/17	BULLETIN #044/PR #029
11	01/17/18	BULLETIN #048/PR #033

BID PACKAGE 4: UNDERGROUND UTILITIES FOUNDATIONS, STRUCTURAL STEEL & GRADING

PROJECT: NORTH
 42°22'18.9"N
 71°05'23.6"W
 Cambridge, MA 02139

DRAWING TITLE: UTILITY PLAN

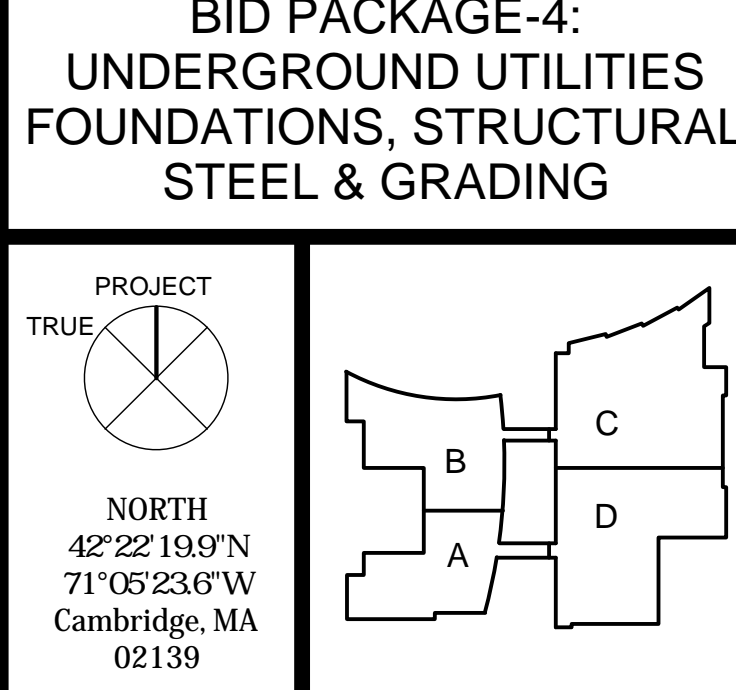
DRAWN BY: RPL

CHECKED BY: AAG

SCALE: 1"=20'

DATE: 3/21/2017

DRAWING NUMBER:



NOTES:

- CONTRACTOR TO PROVIDE ALTERNATE PRICING FOR A 3-FOOT DIAMETER DROP MANHOLE IN LIEU OF A 4-FOOT DIAMETER DROP MANHOLE FOR SMH 305 AS INDICATED BY CITY OF CAMBRIDGE.

SCALE: 1" = 20'

0 10 20 40

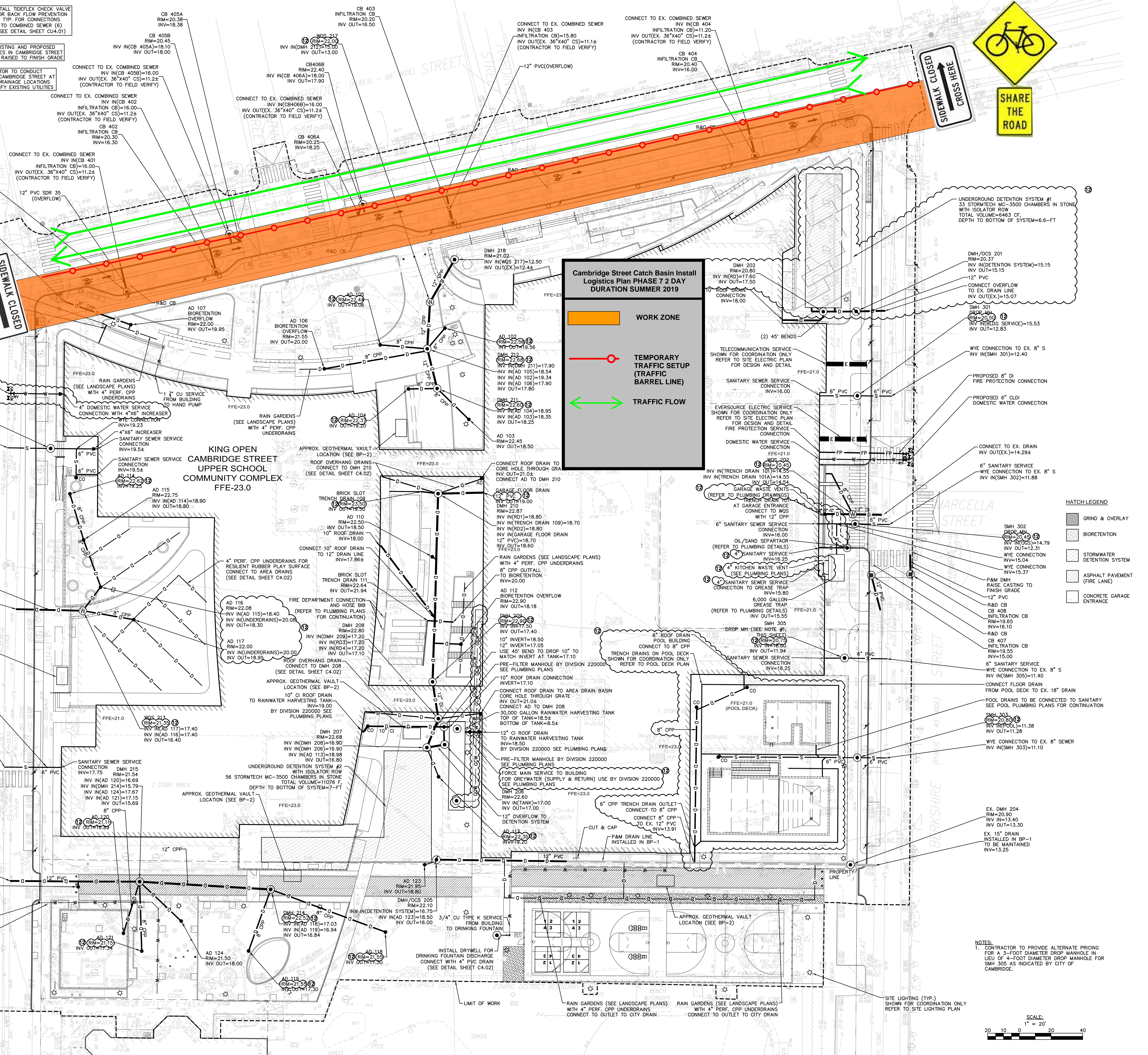
C2.02

King Open School Cambridge Street Catch Basin Install Sequence Plan PHASE 7 SUMMER 2019

During phase 6 United Civil will be Cold placing, overlaying and striping the eastbound lane.

Working hours will be between 7:00AM and 3:30PM. THE WORKING AREA SHOWN IN ORANGE WILL BE CLOSED UNTIL WORK IS COMPLETED

Two police details will be in road during working hours



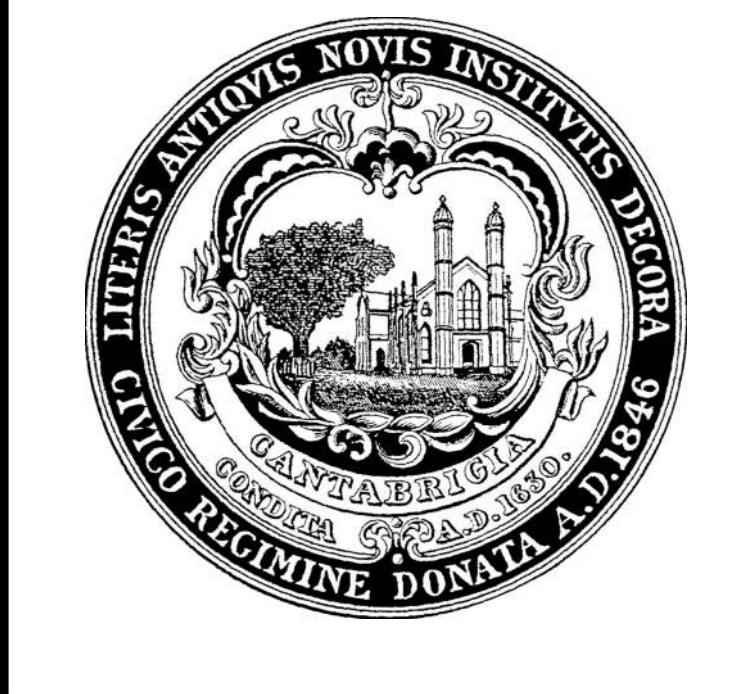
Cambridge Street Catch Basin Install Logistics Plan PHASE 7 2 DAY DURATION SUMMER 2019

- WORK ZONE
- TEMPORARY TRAFFIC SETUP (TRAFFIC BARREL LINE)
- TRAFFIC FLOW



HATCH LEGEND

	GRIND & OVERLAY
	BIORETENTION
	STORMWATER DETENTION SYSTEM
	ASPHALT PAVEMENT (FIRE LANE)
	CONCRETE GARAGE ENTRANCE



City of Cambridge
King Open & Cambridge Street Upper Schools & Community Complex
Cambridge, MA 02139

ARCHITECT: WILLIAM BANN ASSOCIATES ARCHITECTS INC.
10 WEST FREE SQUARE SUITE 700N
BOSTON, MASSACHUSETTS 02109
T: 617.623.3470 F: 617.623.3479

MEP/FP/SECURITY/TELECOM CONSULTING ENGINEERS INC.
370 BALANCE CENTER ROAD
N. BARTONVILLE, MA 02457-1217
T: 508.998.5700

STRUCTURAL ENGINEER: LEMUS/DEER CONSULTANTS
138 SOLDIERS FIELD ROAD
BOSTON, MASSACHUSETTS 02115
T: 617.868.1200

CIVIL: NITESH ENGINEERING
2 CENTER PLAZA SUITE 600
BOSTON, MASSACHUSETTS 02108
T: 617.338.0063

LANDSCAPE: COPPEL WELLS DESIGN GROUP
LANDSCAPE ARCHITECTS & PLANNERS
160 BOSTON STREET, 3RD FLOOR
BOSTON, MA 02116
T: 617.654.8000

POOL: AQUATIC DESIGN GROUP
2220 FARADAY AVENUE
CAMBRIDGE, MA 02142
T: 760.438.8400

ADVISORIAL: AERENTH
25 MOUNTAIN STREET
CAMBRIDGE, MA 02138
T: 617.499.8000

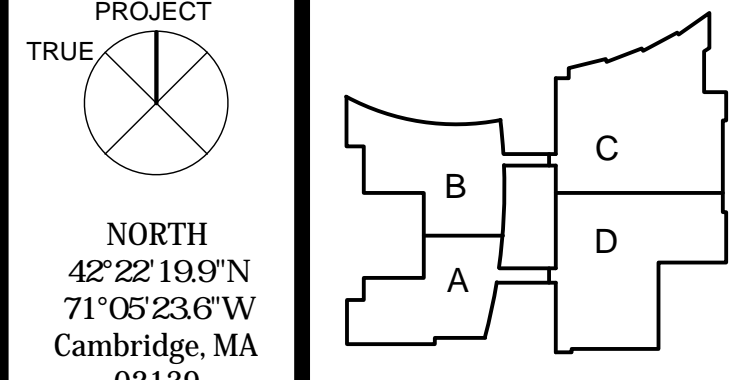
GENERAL NOTES:

- COORDINATE UTILITIES WITH GEOTHERMAL WELLS INSTALLED IN BP-2.

REVISIONS:

ISSUE	DATE	REVISION
1	3/30/17	SUPPLEMENT 1
2	5/24/17	BULLETIN #009/PR #006
3	6/28/17	BULLETIN #012/PR #008
4	7/11/17	BULLETIN #016/PR #010
5	10/16/17	BULLETIN #028/PR #020
6	10/18/17	BULLETIN #031/PR #022
7	10/30/17	BULLETIN #022/PR #016
8	10/30/17	BULLETIN #034/AS #010
9	12/18/17	BULLETIN #043/PR #028
10	12/18/17	BULLETIN #044/PR #029
11	01/17/18	BULLETIN #048/PR #033

BID PACKAGE 4: UNDERGROUND UTILITIES FOUNDATIONS, STRUCTURAL STEEL & GRADING



UTILITY PLAN

DRAWN BY: RPL
CHECKED BY: AAG
SCALE: 1"=20'
DATE: 3/21/2017
DRAWING NUMBER:

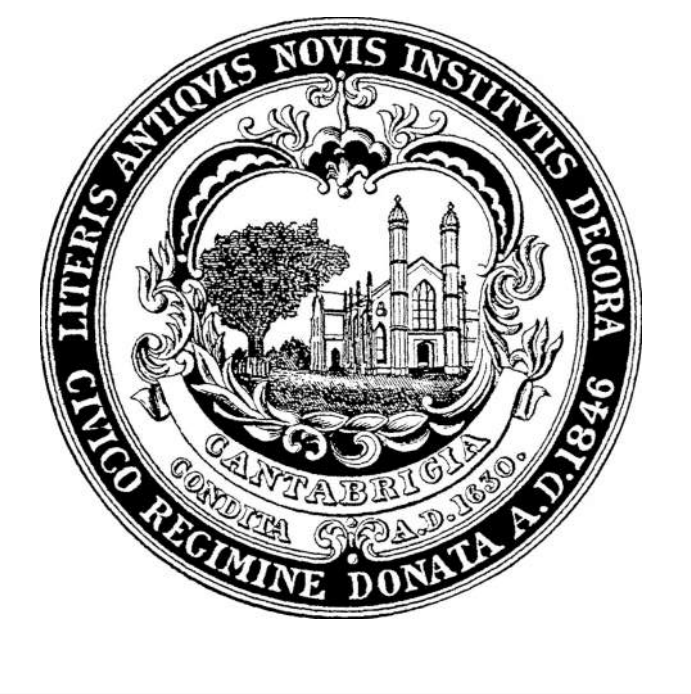
C2.02

King Open School Cambridge Street Catch Basin Install Sequence Plan PHASE 6 SUMMER 2019

During phase 6 United Civil will be Cold placing, overlaying and striping the eastbound lane.

Working hours will be between 7:00AM and 3:30PM. THE WORKING AREA SHOWN IN ORANGE WILL BE CLOSED UNTIL WORK IS COMPLETED

Two police details will be in road during working hours



City of Cambridge

King Open & Cambridge Street Upper Schools & Community Complex

Cambridge, MA 02139

ARCHITECT: WILLIAM BANN ASSOCIATES ARCHITECTS INC. 10 WEST FREE SQUARE SUITE 700N BOSTON, MASSACHUSETTS 02119 T: 617.623.3470 F: 617.623.3509

IN ASSOCIATION WITH:

ARBONSTREET INC. 10 WEST FREE SQUARE SUITE 700N BOSTON, MASSACHUSETTS 02119 T: 617.623.3535

MEP/FP/SECURITY/TELECOM: CAROL CALKINS DESIGN CONSULTING ENGINEERS INC. 370 HUNCE CORNER ROAD N. BOSTONVILLE, MA 02459 T: 617.968.9700

STRUCTURAL ENGINEER: LEMUS/BER CONSULTANTS 138 SOLDIERS FIELD ROAD BOSTON, MASSACHUSETTS 02135 T: 617.868.1200

CIVIL: NITCH ENGINEERING 2 CENTER PLAZA SUITE 600 BOSTON, MASSACHUSETTS 02108 T: 617.338.0063

LANDSCAPE: COPLEY WELLS DESIGN GROUP LANDSCAPE ARCHITECTS & PLANNERS 160 ROVELSON STREET, 3RD FLOOR BOSTON, MA 02118 T: 617.654.8000

FOOD SERVICE: CHARITREE INCORPORATED ASSOCIATES INC. 161 WEST MAIN STREET GEORGETOWN, MA 02453 T: 978.332.8300

POOL: AQUATIC DESIGN GROUP 2226 FARADAY AVENUE CARLSBAD, CA 92008 T: 760.438.8400

ADVISORIAL: AENTH 25 MARLIN STREET CAMBRIDGE, MA 02138 T: 617.499.8000

GENERAL NOTES:

- COORDINATE UTILITIES WITH GEOTHERMAL WELLS INSTALLED IN BP-2.

REVISIONS:

ISSUE	DATE	REVISION
1	3/30/17	SUPPLEMENT 1
2	5/24/17	BULLETIN #009/PR #006
3	6/28/17	BULLETIN #012/PR #008
4	7/11/17	BULLETIN #016/PR #010
5	10/16/17	BULLETIN #028/PR #020
6	10/18/17	BULLETIN #031/PR #022
7	10/30/17	BULLETIN #022/PR #016
8	10/30/17	BULLETIN #034/AS #010
9	12/18/17	BULLETIN #043/PR #028
10	12/18/17	BULLETIN #044/PR #029
11	01/17/18	BULLETIN #048/PR #033

BID PACKAGE 4: UNDERGROUND UTILITIES FOUNDATIONS, STRUCTURAL STEEL & GRADING

PROJECT: NORTH 42°22'13"N 71°05'23"W Cambridge, MA 02139

DRAWING TITLE: **UTILITY PLAN**

DRAWN BY: RPL

CHECKED BY: AAG

SCALE: 1"=20'

DATE: 3/21/2017

DRAWING NUMBER: **C2.02**

