

Meeting Notes

Date 18 June 2015

Project / No. King Open and Cambridge Street Upper Schools Community Complex / 14054

Present

Lisa Peterson	City of Cambridge, Deputy City manager
Tim Toomey	Cambridge City Council, State Rep for East Cambridge and East Somerville
Mark McGovern	Cambridge City Council
Fred Fantini	Cambridge School Committee
Marjorie Decker	State Representative, Cambridge
Brendon Roy	City of Cambridge, Assistant Project Manager
Chris Neal	City of Cambridge, Community Relations Manager
Jim Maloney	Cambridge Public Schools [CPS], Chief Operating Officer
Darrell Williams	King Open School [KO], Principal
Manuel Fernandez	Cambridge Street Upper School [CSUS], Principal
Kevin Bergeron	William Rawn Associates
Sam Lasky	William Rawn Associates
Sophia Chang	William Rawn Associates
Matt Rice	Arrowstreet
Kate Bubriski	Arrowstreet
KO Staff	
CSUS Staff	
Human Services Staff	
Neighbors	
Parents	
Students	
Alumni	

Reported By Sophia Chang

Subject Community Preview

Location King Open Gym, Cambridge MA

On Thursday, June 18, 2015 at 5:00 pm, two stations were set up in the King Open gymnasium; each displaying one of two possible scheme variations for the new facility organization. A summary of comments from Community meeting #2 was also displayed along with historic photos of the site. The above attendees at the end of school barbeque were invited to come by to look at the schemes, ask questions, and talk to the Design Team. A few hundred people participated in the event.

Scheme 1 – Shared Spaces front onto Cambridge Street – Create a larger civic space facing Cambridge Street and a large recreation space facing Donnelly. King Open and CSUS are separated (E & W) with shared resources in middle facing Cambridge Street. Those shared resources all face onto the front civic space, with a goal of making this a real place for the community after hours and on weekends.

Scheme 2 – Shared Spaces aligned North to South – Combine shared spaces along east end of site, linking Cambridge Street to Donnelly field to the South. King Open and CSUS are together on the West side of the site, surrounding a Recess and Play area facing Willow Street. Two glass connectors link the schools to the shared resources and create an enclosed courtyard at the middle of the site. Shared Resources can be easily closed off from school program and available to the community after hours and on Weekends.

General

1. School Design Comments
 - a. One KO student likes the idea of more floors, because stairs give a different way to get around and make getting around more interesting.
 - b. More floors are good for increasing open space.*
 - c. One community member was vehemently opposed to adding a fourth story.
 - d. Murals need to be part of new building*
 - i. One parent stressed how much work, thought, and ownership went into the mural by the students. She mentioned that students were very upset about the lost mural at MLK.
 - e. What will happen to existing auditorium chairs? Can they be souvenirs?
 - f. Concerned about schedule issues around only having one cafeteria. Currently there are students eating lunch at 10am and others closer to 2pm. *
 - i. Lunch would be too chaotic with both schools together at once.
 - ii. One parent indicated that her child prefers not to eat some days rather than stand in the long line.
2. Open Space Comments
 - a. City Sprouts should be visible
 - b. Keep the Bocce Court
 - c. Don't forget the reading garden*
 - d. How big is the pocket park on the corner of Cambridge Street and Berkshire going to be? Community relies on park there.
3. Library Design Comments
 - a. One parent commented that there was too much glass feels sterile. Preference for the cozy atmosphere of the current library.
 - b. Community members expressed excitement over glass and transparency, comparing it to the Cambridge Public Library.
4. Traffic Comments
 - a. Cambridge Street is dangerous and needs to be redesigned.*
 - i. Hubway
 - ii. Bike Lane
 - b. Please make the surrounding area pedestrian safe.

Scheme 1

1. School Design Comments
 - a. Makes great sense as a community school.
 - b. Like how it seems more compact – not walking as far to get to gym, etc.
 - c. Give CSUS more of a presence on Cambridge Street. Seems a bit hidden.
 - d. Schools should be flipped. King Open on Berkshire and Upper School on Willow more direct connection to Youth Center.
 - e. Where is the person who buzzes people in? Is access to cafeteria and gyms pre check-in a concern?
 - f. Love the curve
 - g. There is more sun in this scheme – better.
 - h. Current fenced in area is not used. It will be a plus to make the open space more inviting.
 - i. Some Parents, teachers, and students preferred the separation between upper and lower schools*
 - i. Avoid commotion of older students intimidating or knocking over younger students.
 - ii. Separate is good, but do not want to lose the mentoring connection between the two schools.
 - iii. Separation seems good for less congestion at pickup and drop-off
 - iv. Corridors too chaotic when kids mix. Older kids are “giant” and intimidating for kids. One teacher noted hearing this from many parents at the school.
 - v. Some of the older children prefer not being lumped with the younger kids.
2. Open Space Comments
 - a. Parents generally want shared space to move forward and to have back open space be even bigger.*
 - i. Front space is not seen as being used enough.
 - ii. Consider scale of civic space. Is it too big?
 - b. Will green surrounded on three sides on Cambridge Street really be used on the north side of the building? A corner plaza seems better in this aspect.
 - c. Need separate playgrounds
 - i. Use City Sprouts to divide upper and lower playgrounds.
 - d. How many people can fit on the plaza?
 - e. People don't use space in front of Library and School very much now as there is too much traffic.
 - f. Where does City Sprouts go?*
 - g. Open space connected to the field is good.
3. Pool Design Comments
 - a. Pool included is nice. Kiddie pool is a great idea.*
 - b. Desire for covered pool for classes to use the facility. Especially for 4th Grade Swimming.*
 - c. Desire for schools to use the pool with the curriculum.
 - d. Desire for covered pool to allow a longer season.
 - e. If there is a four year construction duration, pool could be enclosed.
 - f. Wish pool had access to green space.
4. Traffic Comments
 - a. Place parking for buses in front of Cambridge Street on the inside of the arc, separate from street
 - b. Need separate parking for parents away from buses.
 - c. Where do parents pick up kids? Parents currently can use the teacher lot.

Scheme 2

1. School Design Comments
 - a. A common first reaction which did not happen with scheme 1 is “Where’s the entrance?” and “How would each school have their own?”*
 - b. Seems way too long for kids to walk to gym and cafeteria
 - c. KO parent likes division of space in Bi-Part Scheme
 - d. Community members appreciate accessibility of amenities after hours.
 - e. Sunlight getting deep into the site from the south is great.
 - f. Scheme 2 seems to have more usable space for the kids – better. Also, the drawings where buildings are closer to the street offers more recess space – better.
 - g. Some parents preferred the idea of a more unified school.*
 - i. Encourages kids to be able to look ahead to the older kids, be mentored, and not have a break in the school experience.
 - ii. One student expressed liking being able to look ahead to older years as well.
 - iii. Sense of community encouraged by combined schools.
 - iv. Enclosed garden is good, but CSUS and King Open should be separate.
 - v. Like Community functions separate for clarity of use.
2. Open Space Comments
 - a. 50/50 mix on having a closed garden/play space
 - b. Any way to keep the sycamores and ancient apple tree in the current courtyard?
 - c. How is roof used? Can there be usable open space on the roof?
3. Library Design Comments
 - a. Question as to why Valente is smaller in 2A
4. Traffic Comments
 - a. Concerned about drop-off concentrated all on one side. *
 - b. Parents will stop wherever is convenient.
 - c. Bike parking at garage.

These meeting minutes constitute our understanding of matters discussed and directions given at this meeting. Should there be any other substantial interpretations, please direct them in writing to our office.

Respectfully submitted,

Sophia Chang, LEED AP BD+C
William Rawn Associates, Architects, Inc.

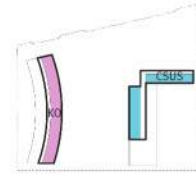
Boards from King Open School, Cambridge Street Upper School & Community Complex – Community Preview June 18, 2015



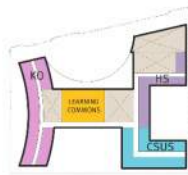
LEVEL 1



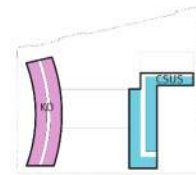
PERSPECTIVE VIEW



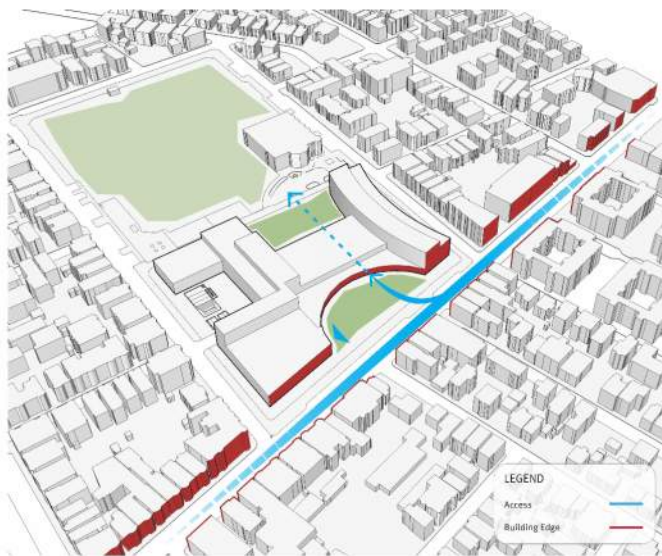
LEVEL 4



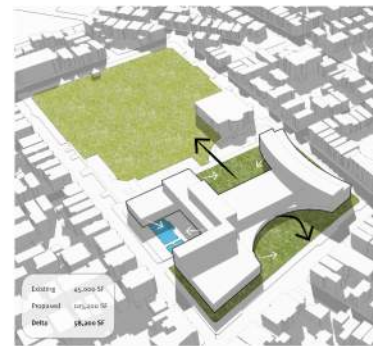
LEVEL 2



LEVEL 3



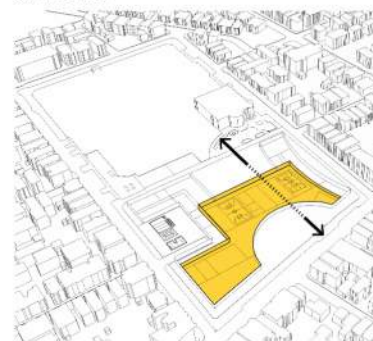
URBAN DESIGN



OPEN SPACE



OPEN SPACE SCALE COMPARISONS



AFTER-HOURS COMMUNITY ACCESS

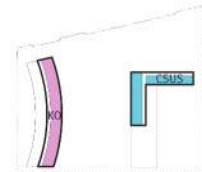
Boards from King Open School, Cambridge Street Upper School & Community Complex – Community Preview June 18, 2015



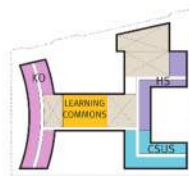
LEVEL 1



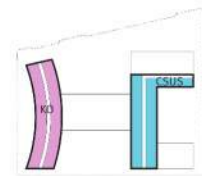
PERSPECTIVE VIEW



LEVEL 4

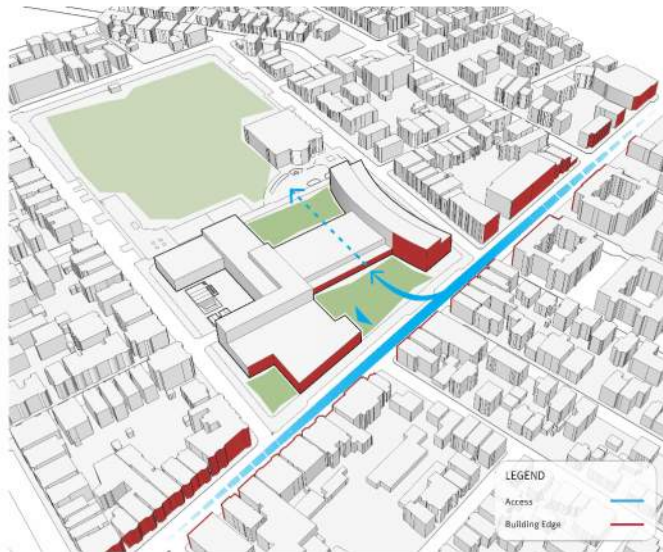


LEVEL 2



LEVEL 3

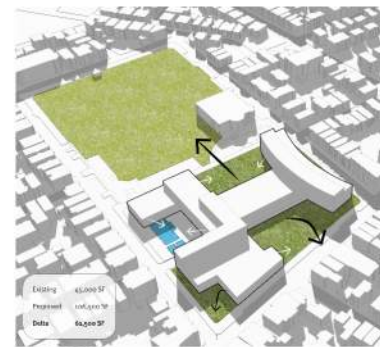

 WILLIAM RAWN ASSOCIATES | ARCHITECTS, INC. | ARROWSTREET
OPTION 1: SHARED SPACES FRONT ONTO CAMBRIDGE ST
 1B - THREE SIDED PLAZA



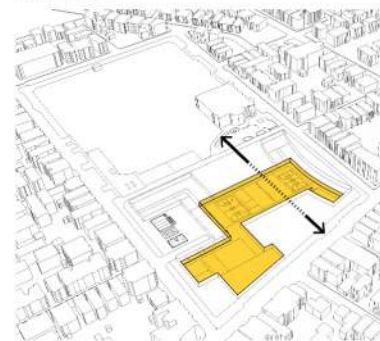
URBAN DESIGN



OPEN SPACE SCALE COMPARISONS



OPEN SPACE



AFTER-HOURS COMMUNITY ACCESS


 WILLIAM RAWN ASSOCIATES | ARCHITECTS, INC. | ARROWSTREET
1B - THREE SIDED PLAZA

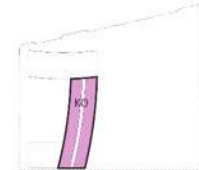
Boards from King Open School, Cambridge Street Upper School & Community Complex – Community Preview June 18, 2015



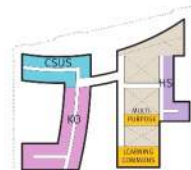
LEVEL 1



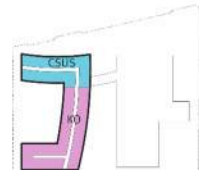
PERSPECTIVE VIEW



LEVEL 4



LEVEL 2



LEVEL 3

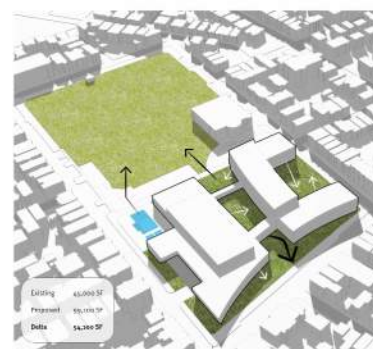
WILLIAM RAWN ASSOCIATES | ARCHITECTS INC. | ARROWSTREET
OPTION 2: SHARED SPACES ALIGNED NORTH TO SOUTH
 2A - ARCED FRONT



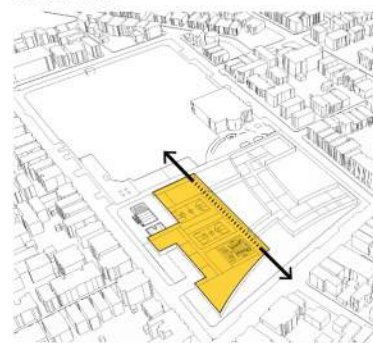
URBAN DESIGN



OPEN SPACE SCALE COMPARISONS



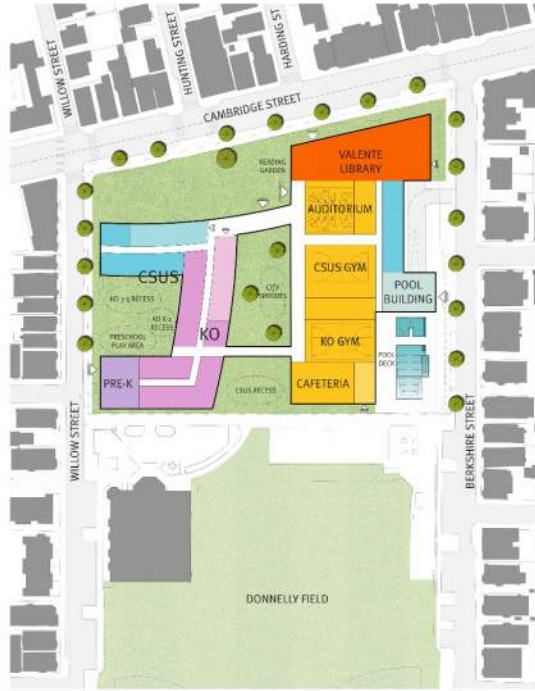
OPEN SPACE



AFTER-HOURS COMMUNITY ACCESS

WILLIAM RAWN ASSOCIATES | ARCHITECTS INC. | ARROWSTREET
 2A - ARCED FRONT

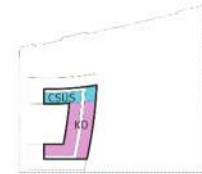
Boards from King Open School, Cambridge Street Upper School & Community Complex – Community Preview June 18, 2015



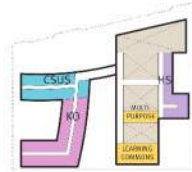
LEVEL 1



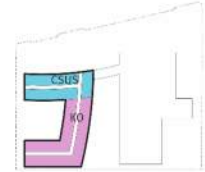
PERSPECTIVE VIEW



LEVEL 4

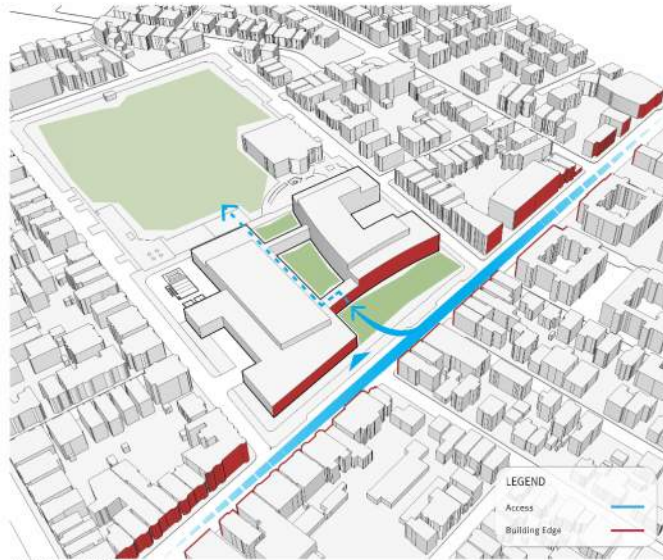


LEVEL 2



LEVEL 3

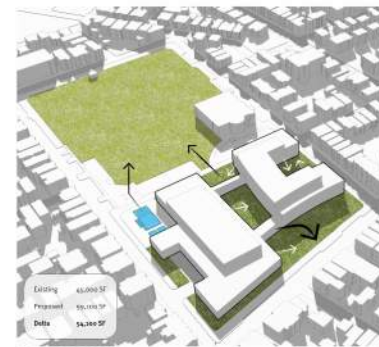
WILLIAM RAWN ASSOCIATES | ARCHITECTS, INC. | ARROWSTREET **OPTION 2: SHARED SPACES ALIGNED NORTH TO SOUTH**
2B - CORNER PLAZA



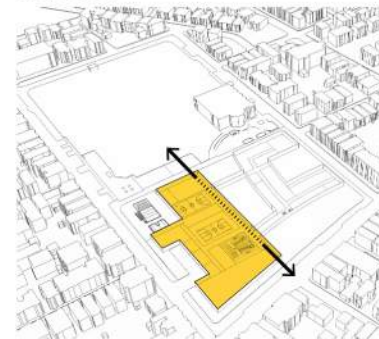
URBAN DESIGN



OPEN SPACE SCALE COMPARISONS



OPEN SPACE



AFTER-HOURS COMMUNITY ACCESS

WILLIAM RAWN ASSOCIATES | ARCHITECTS, INC. | ARROWSTREET **2B - CORNER PLAZA**

COMMUNITY MEETING 2

WHAT WE HEARD FROM YOU



City of Cambridge

1. A Building Unique to KO/CSUS:

- Incorporate ideals of Social Justice and Openness into building as part of school's identity
- Schools should have unique identities
- Create flexibility for long-term success of the design
- Bring in new and fresh ideas and technology

2. Open and Inviting:

- Maximize Natural Light
- Balance Openness and Safety
- Create transparency from the Street
- Creative activities within school should be more public and visible from the street

3. Sensitivity to Open Space:

- Donnelly Field, the garden, and play areas are heavily used by the neighborhood and should be incorporated
- Outdoor spaces should address all age groups, be more inviting, and have less of a "parking lot" feel.
- City Sprouts is an important Program and should be accommodated in the new design.

COMMUNITY MEETING 2

WHAT WE HEARD FROM YOU



City of Cambridge

4. A Civic Amenity:

- Afterschool programs accessible for both users and community
- Can art, music, dance, gym, multipurpose, and auditorium rooms be accessible to the community?
- Extended season for pool and hours for library
- Library should be inviting and engage the street to encourage greater use. Program to be welcoming of various age groups and include hang-out space.

5. Sensitivity to Neighborhood:

- Preserve local culture
- Maximize open space. Balance height and footprint to reduce shadow impact at and around the site
- Concerns over increased traffic and reduced parking

6. Schedule and Construction:

- Noise and Pest Control During Construction
- Concerns about impact of construction and staging on already crowded street parking
- Making detailed schedule available online

Images from King Open School, Cambridge Street Upper School & Community Complex – Community Preview June 18, 2015



Images from King Open School, Cambridge Street Upper School & Community Complex – Community Preview June 18, 2015



Images from King Open School, Cambridge Street Upper School & Community Complex – Community Preview June 18, 2015



Images from King Open School, Cambridge Street Upper School & Community Complex – Community Preview June 18, 2015



Images from King Open School, Cambridge Street Upper School & Community Complex – Community Preview June 18, 2015



Images from King Open School, Cambridge Street Upper School & Community Complex – Community Preview June 18, 2015



Images from King Open School, Cambridge Street Upper School & Community Complex – Community Preview June 18, 2015



Images from King Open School, Cambridge Street Upper School & Community Complex – Community Preview June 18, 2015

