



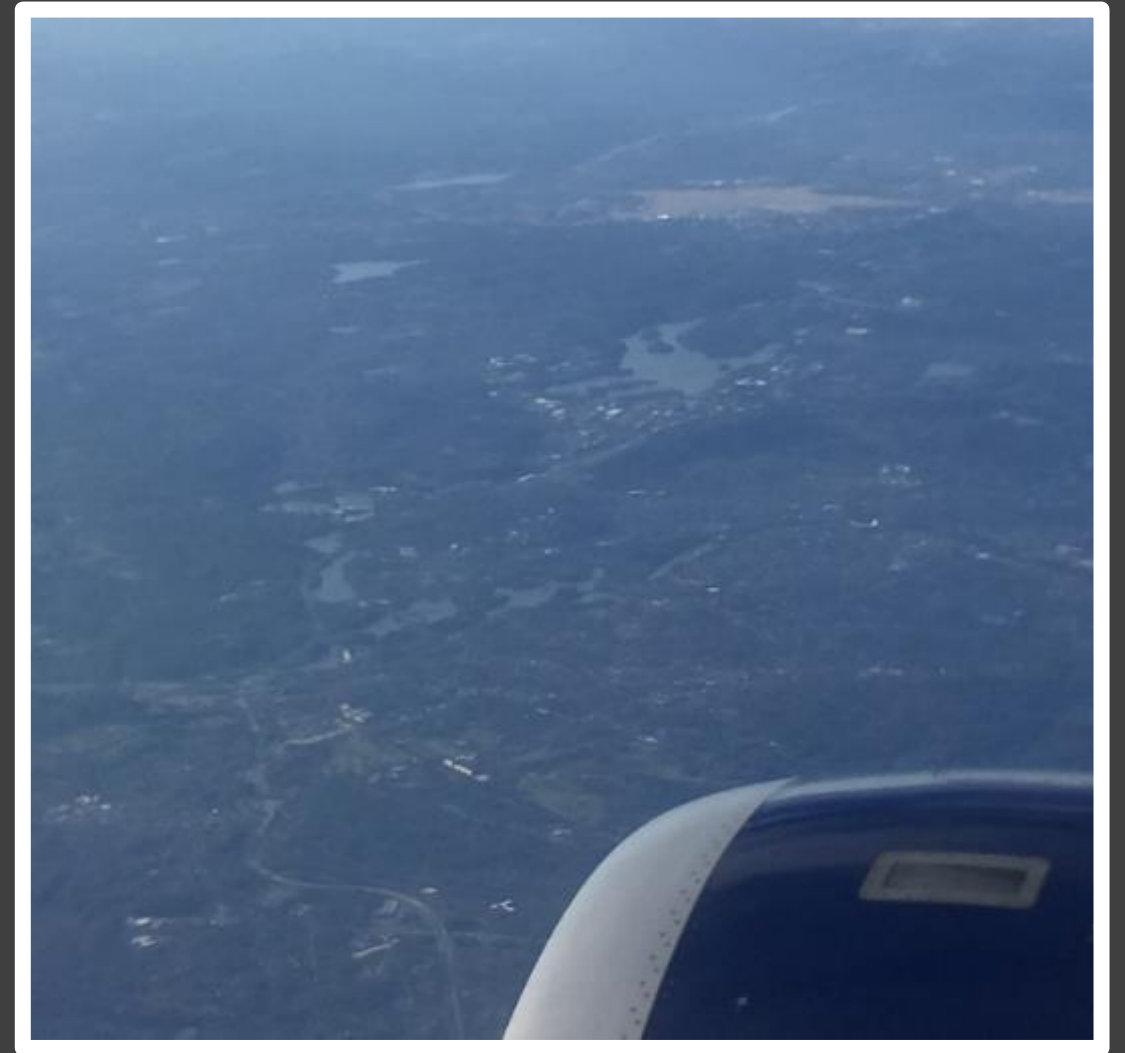
Cambridge Water
Department –
Watershed Division

Land Acquisition Program Summary

Cambridge Water Board March 9, 2021

Land Acquisition Program (2005)

- Goal
 - Protect the quality and quantity of the Cambridge water supply in perpetuity
- Benefits (Multi-Barrier Approach)
 - Maintain water supply
 - Improve water quality
 - Reduce treatment costs
 - Protect critical infrastructure
 - Build community support
 - Maintain ecological integrity

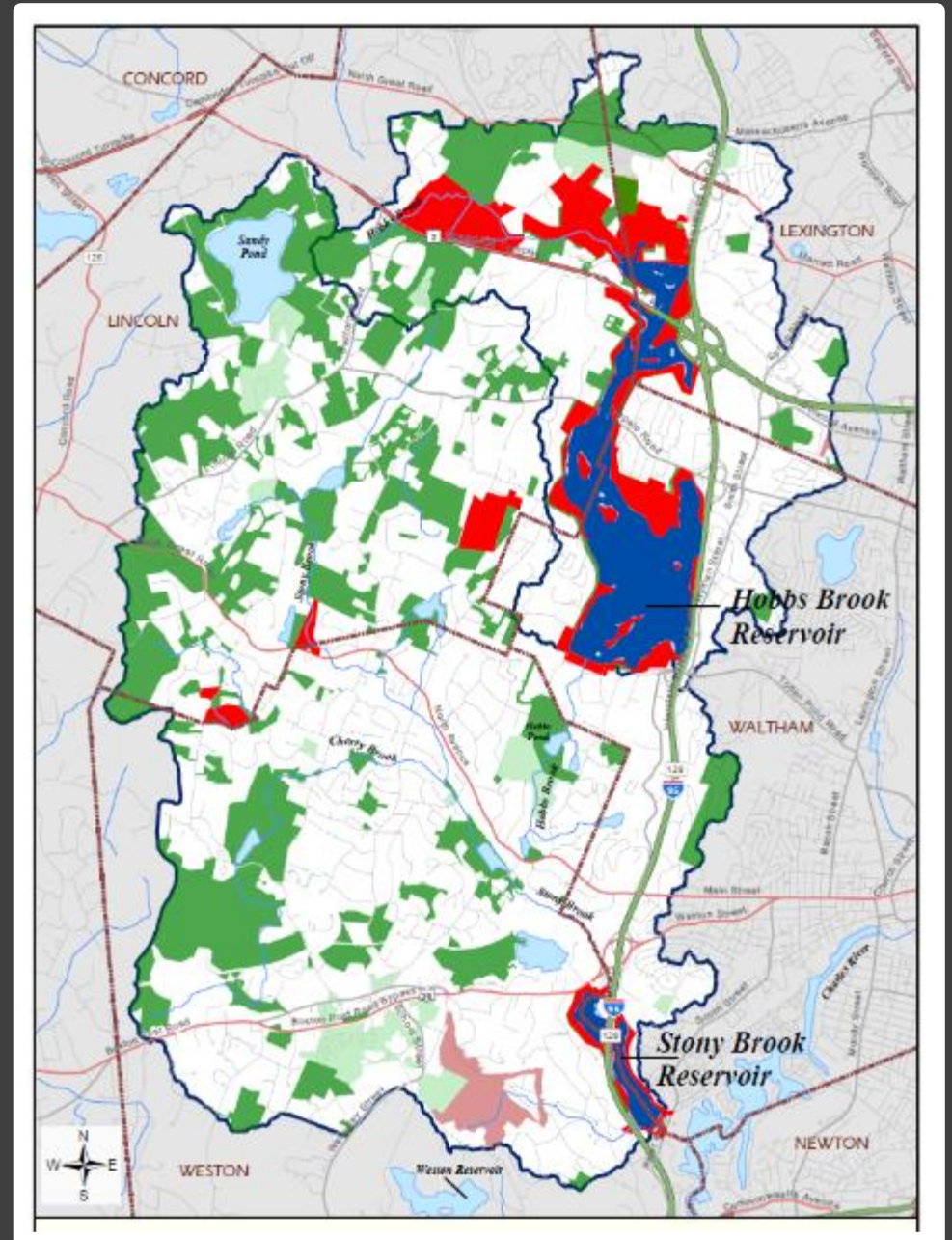


Land Acquisition Program

Total Watershed Area
~15,000 Acres = 24 square miles

Total Cambridge Ownership
~1,400 Acres = 2.2 square miles

~9% of Land Area
Owned/Controlled by the City



Land Acquisition Approach

Criteria

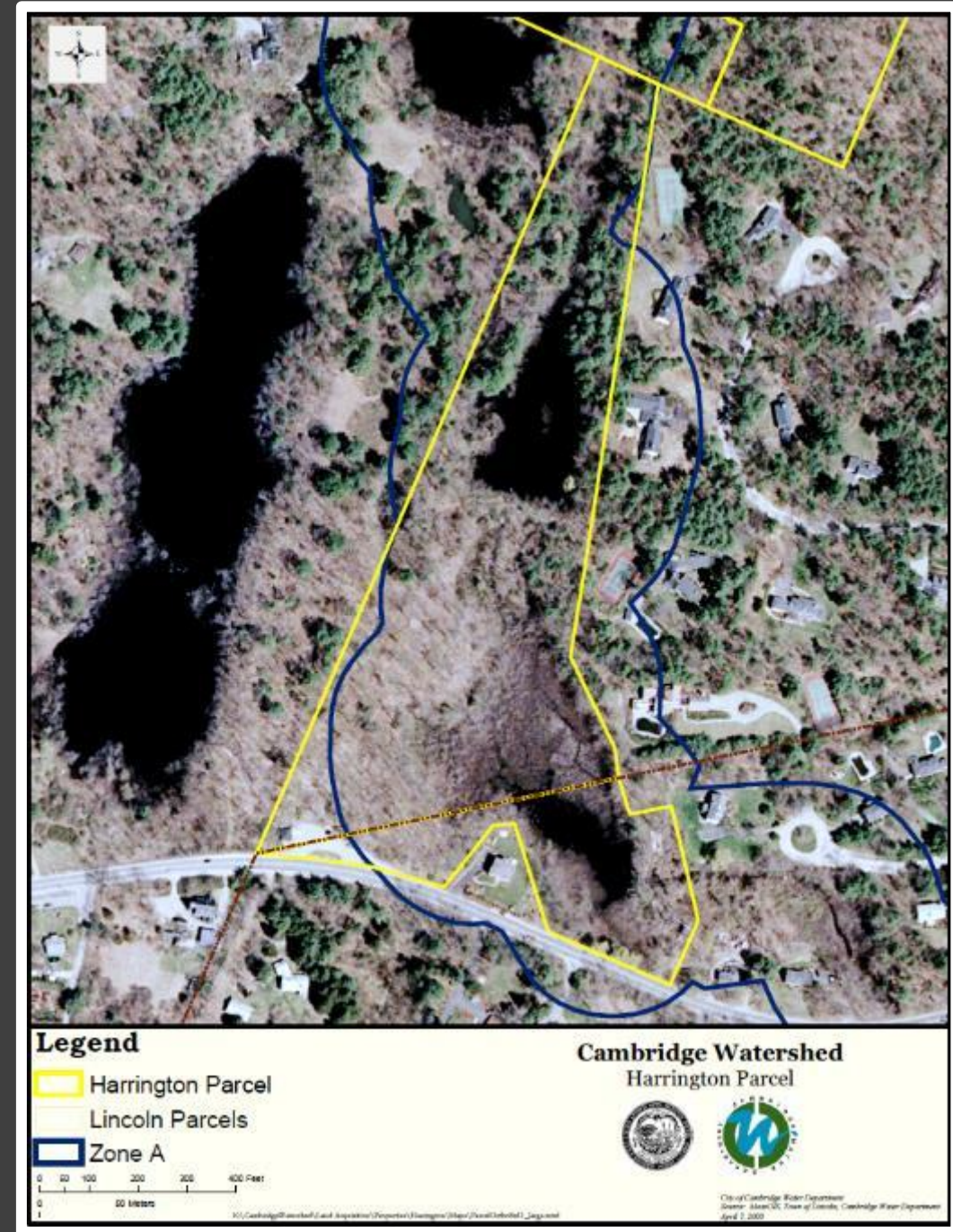
- Zone A
- Imminent risk of development
- Community support
- **Reasonable acquisition cost**
- Cost of ownership
- Additional benefits
 - Leverages additional land protection
 - Maintain ecological integrity
 - Protects rare species and historic sites

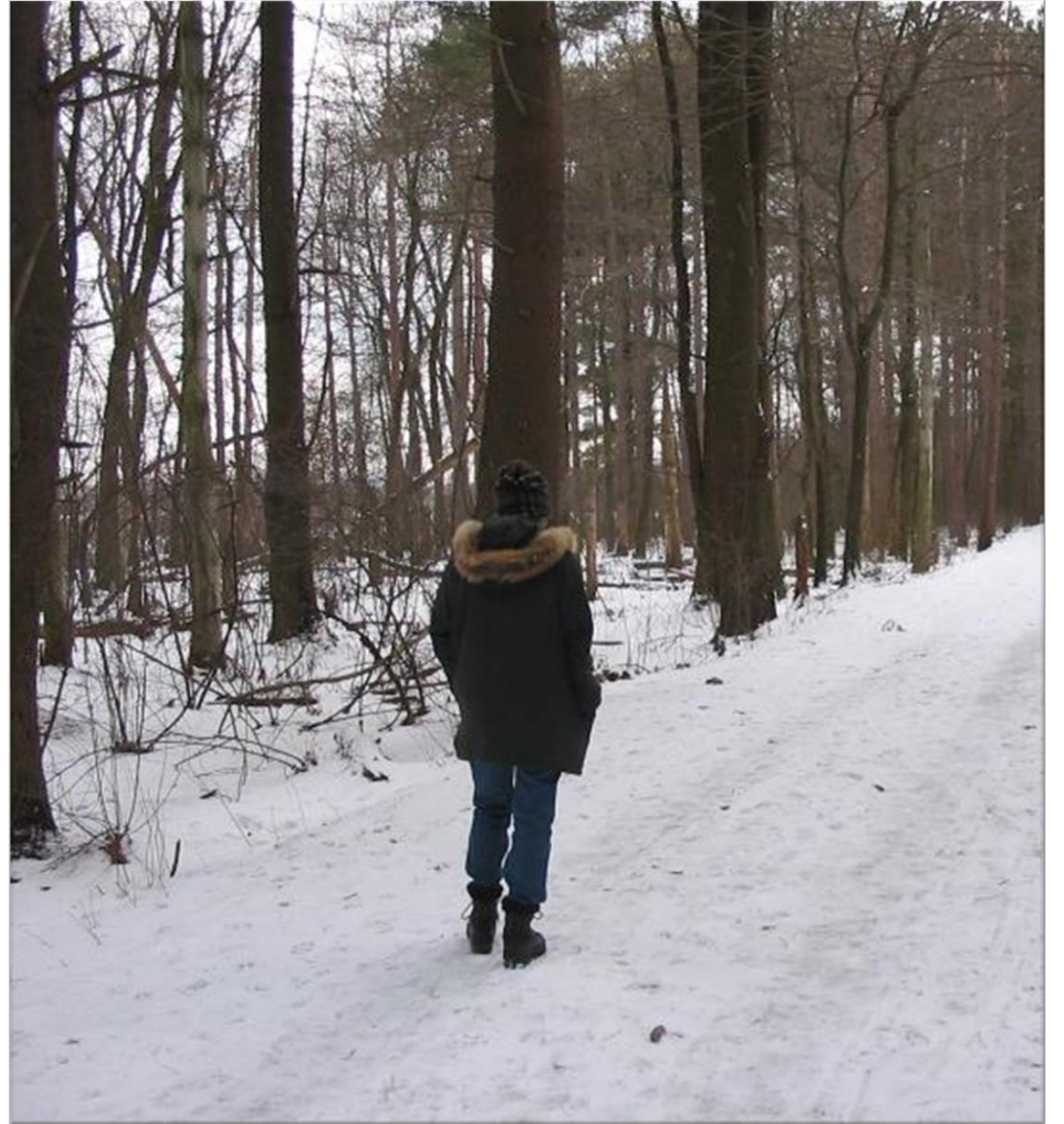


Land Acquisition History (2005 - Today)

Harrington Property, Lincoln/Weston (2005)

- 16 Acres
- Leveraged protection of 54 acres total
- Zone A
- Risk of development
- CR/Community support
- \$1,000,000 (CPA, State Grant, donations)
- Cost of ownership – dam issues, beaver, tree work
- Additional benefits
 - Maintain ecological integrity
 - Protects rare species and historic sites

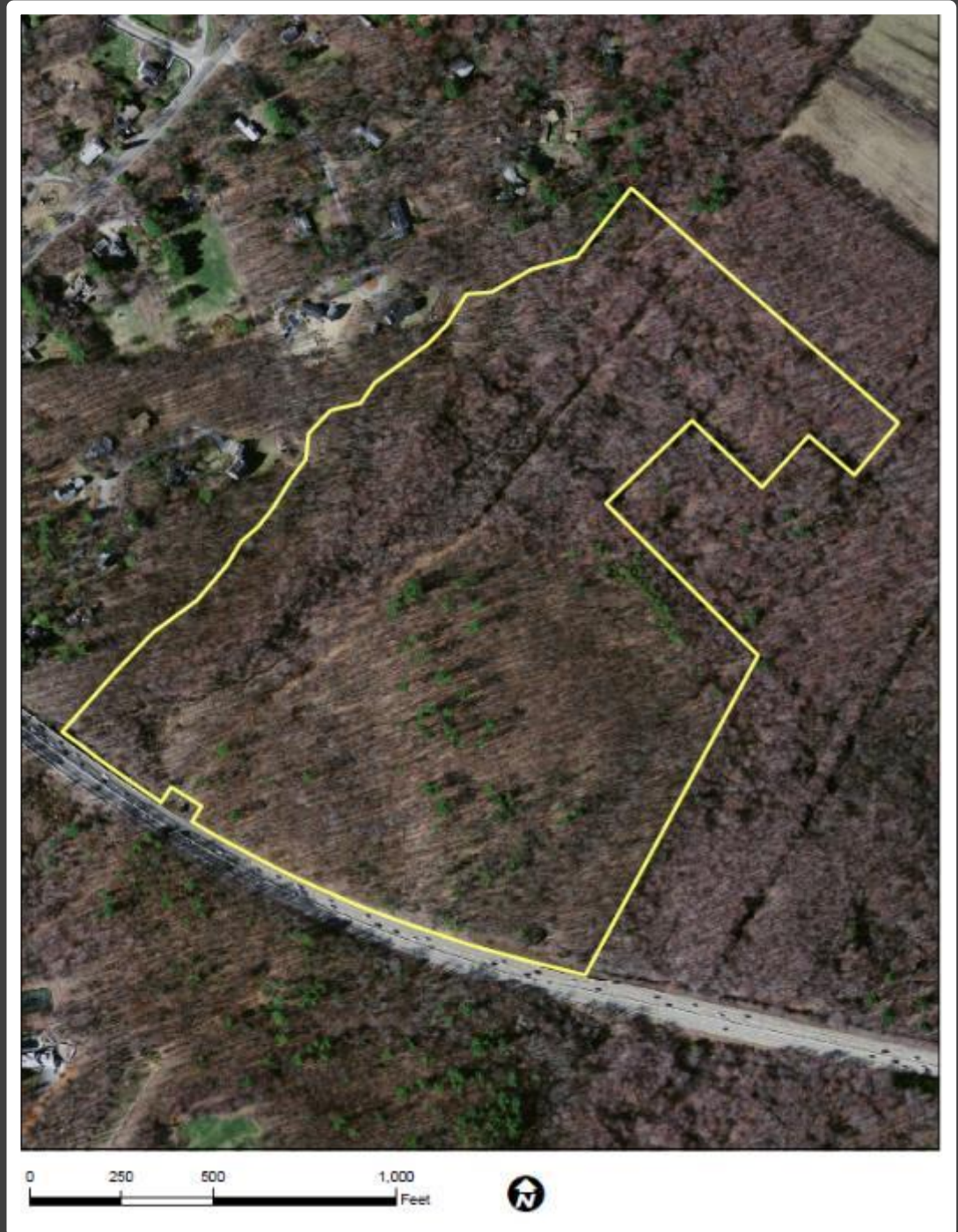


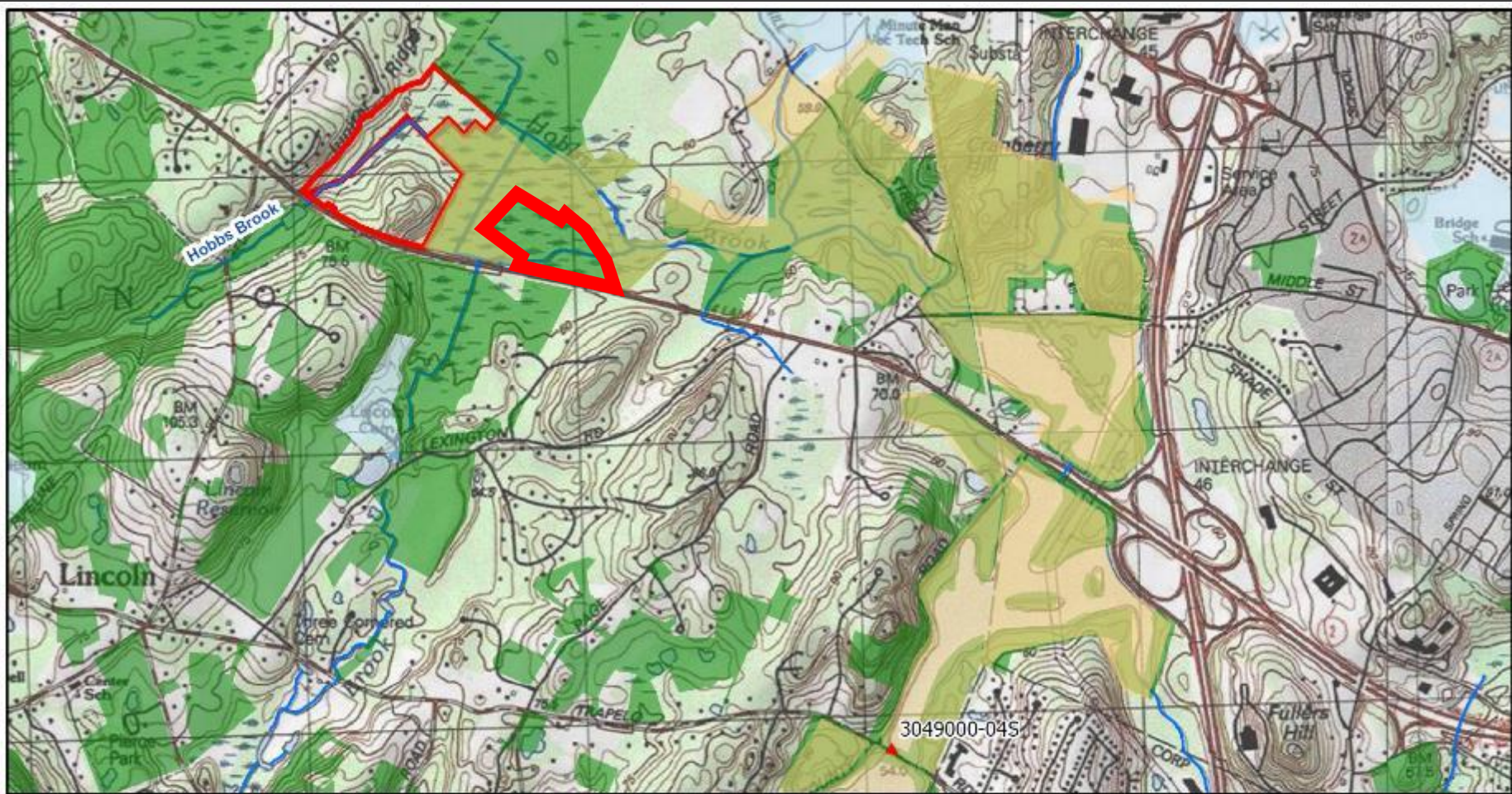


Land Acquisition History (2005 - Today)

DeNormandie Property, Lincoln (2012)

- 54 Acres
- Donation of nearby 20-acre parcel
- Zone A
- High risk of development
- CR/Community support
- \$1,900,000 (CPA, State Grant, Donations)
- Cost of ownership – minimal
- Additional benefits
 - Created 235-acre area of protected open space
 - Protects rare species
 - Carved out an easement for future construction of a MassDOT stormwater basin





Legend

- DeNormandie Parcels
- ▲ Community Surface Water
- OpenSpace: Level of Protection
- In Perpetuity
- Limited
- Cambridge-Owned Parcels





Land Acquisition History (2005 - Today)

- Jerodel Property, Lincoln (2015)
 - 54 Acres
 - Zone A
 - CR/Community support
 - \$325,000 (\$250,000 donated, \$75,000 Water Dept. Capital)
 - Cost of ownership – minimal
 - Additional benefits
 - Created 161-acre area of protected open space
 - Protects rare species





Moving Forward

- Identify additional high protection value and high cost parcels
- Identify funding sources, partnership opportunities
- Continue to monitor land

