



**Lesley**  
UNIVERSITY



**Town Gown**  
Planning Board  
February 2, 2016

# 2015 Town Gown

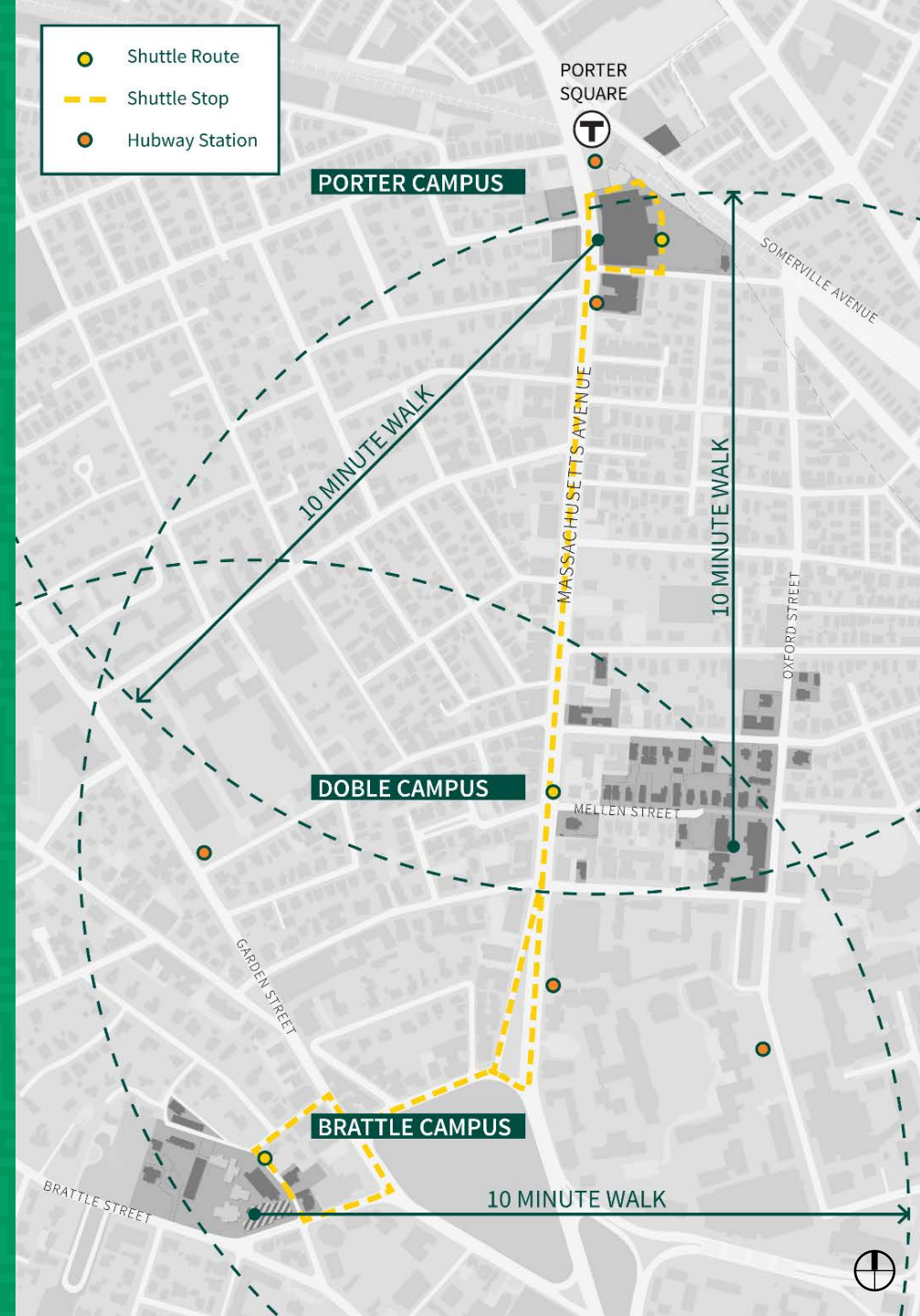
- Campus Overview
- Projects by Campus
- Sustainability
- Cambridge Partnerships





# Campus Overview

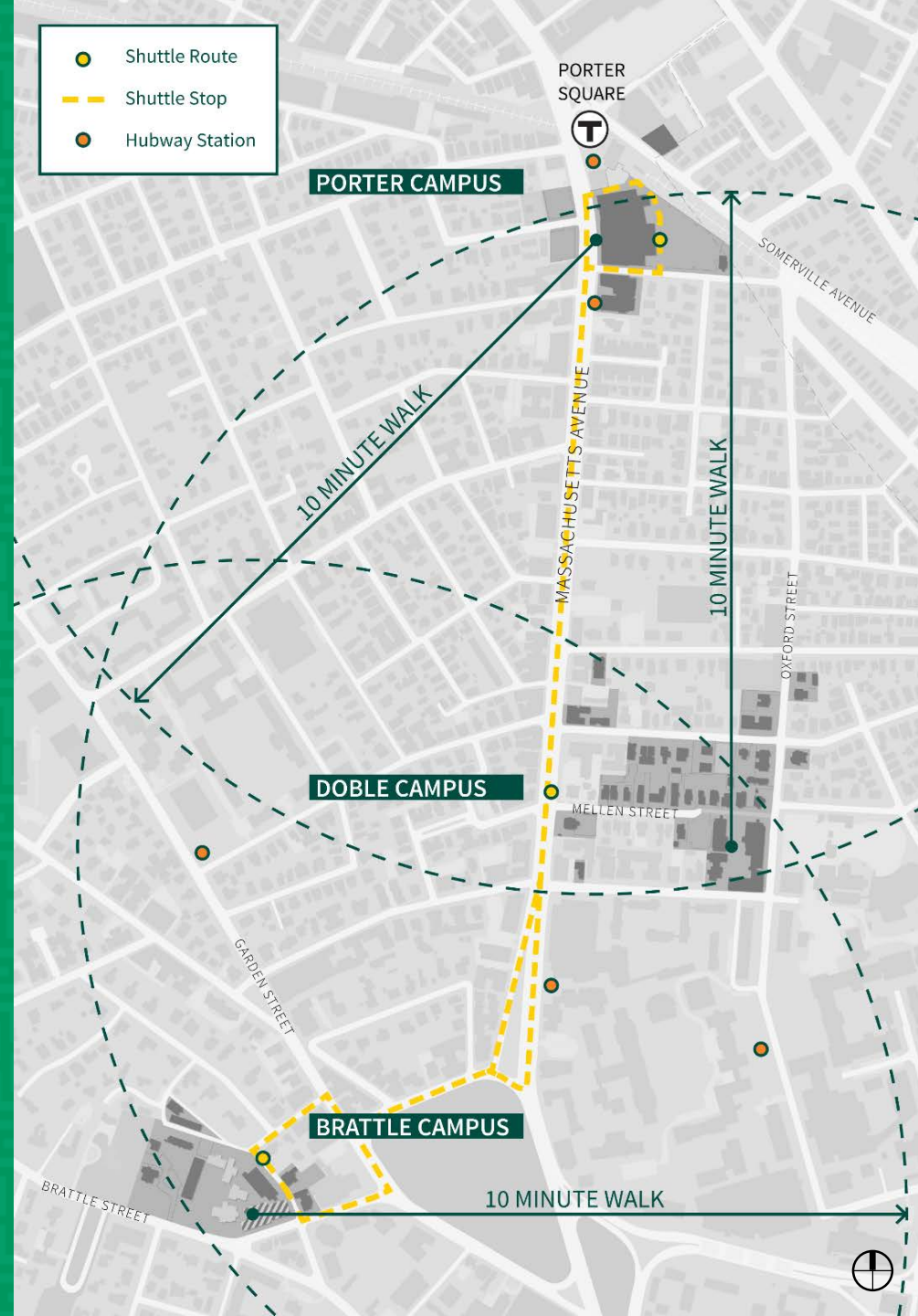
- 3 Cambridge campuses
- 10 minutes apart by foot
- Shuttles run between each campus



# Campus Overview

## Campus Shuttle

- Connects Campuses
- Two 15 seat vans
- Monday-Friday:  
7:20 AM – 11:30 PM
- Weekend:  
10 AM – 10:30 PM
- FY15 ridership -  
62,340





# Campus Overview

## Lesley Profile – 2015

Students	Cambridge Only
Undergraduate	1,686
Graduate	2,472
Dormitory Beds	890

Faculty & Staff	Cambridge Only
Faculty	179
Staff	371





# Campus Overview

## Lesley Profile – 2015

- 58 buildings
- 25 offsite locations
  - 12 within MA
  - 13 outside MA





# Campus Overview

## Planning Efforts

- Transition Period – 2016-2017
  - Limited planning to allow transition of new president
  - No significant building or renovation projects
- Strategic Plan
  - 3-year planning horizon/cycle (through 2016)
  - Update extension to span additional 18-24 months
  - Soliciting input from community
- Campus Plan Update
  - Assesses current use of space
  - Identifies facility needs to meet academic objectives
  - Internal review





# Projects By Campus

## PORTER CAMPUS

## DOBLE CAMPUS



## BRATTLE CAMPUS



#

### Completed

1. Lunder Arts Center
2. Threshold, 82 Oxford
3. Lawrence Hall Interior Renovations
4. Sherrill HVAC – Phase 2

#

### In Construction

5. Porter Café Renovation
6. Doble Hall Interior Renovations

#

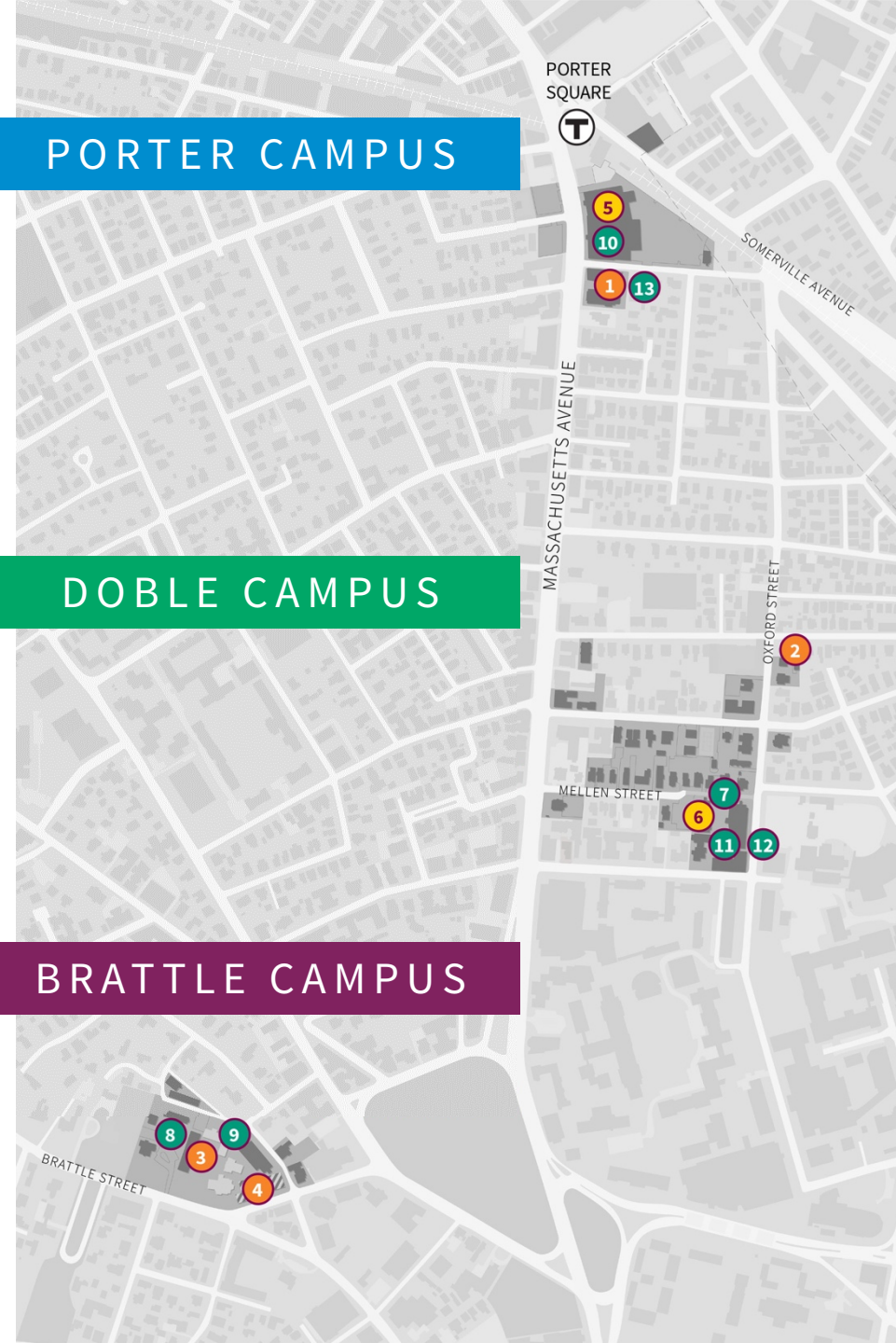
### In Planning

7. Lesley Entrance & Mellen Street Pedestrian Walkway
8. Community Garden Expansion
9. Electric Grid Replacement
10. UHall Retail Space Upgrade
11. Doble Quad Building Systems Control Upgrade
12. Doble Campus Exterior Lighting Retrofit
13. Lunder Arts Center Skylights

## PORTER CAMPUS

## DOBLE CAMPUS

## BRATTLE CAMPUS





# Porter Campus

COMPLETED

1. Lunder Arts Center

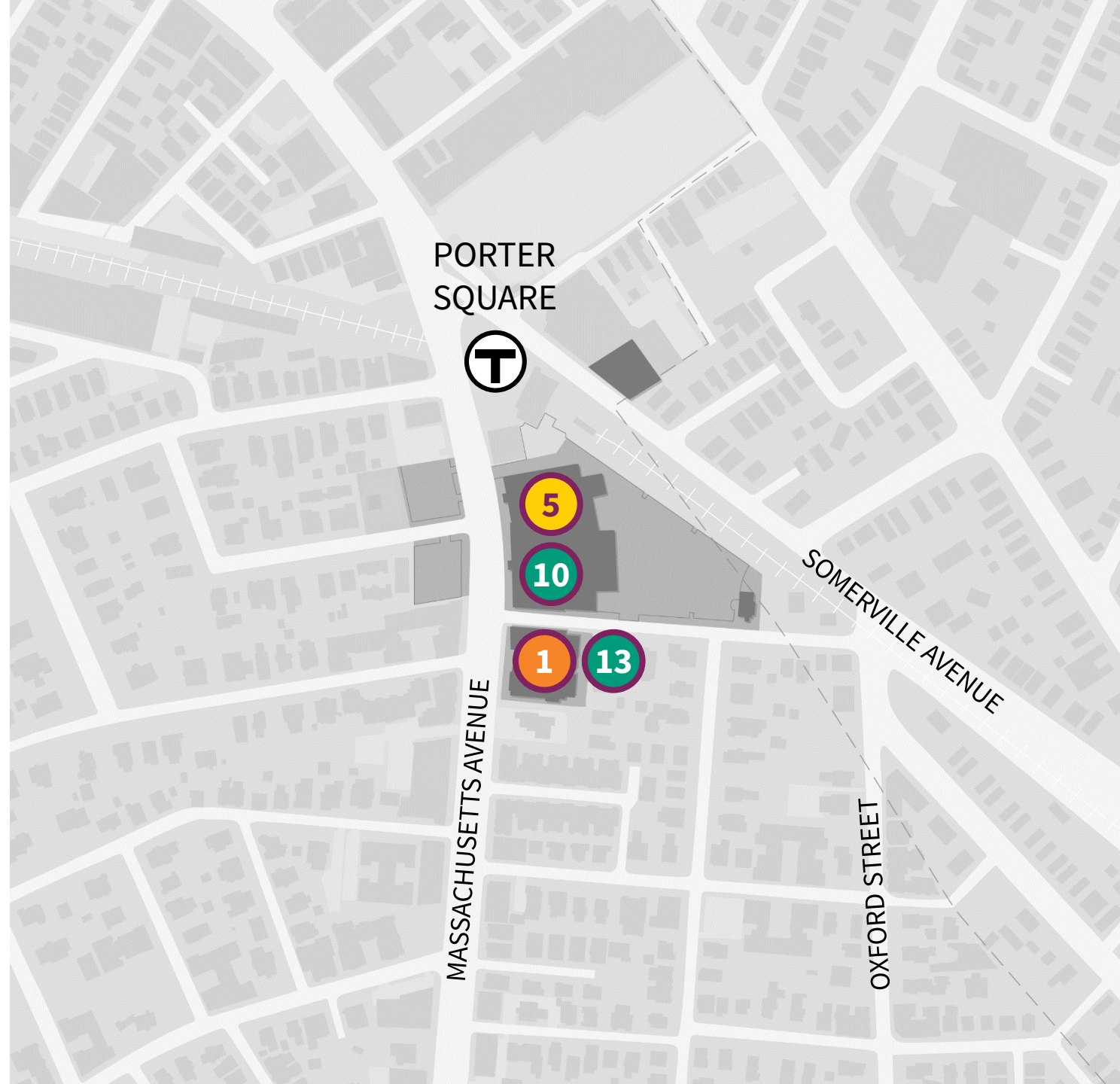
IN CONSTRUCTION

5. Porter Café Renovation

IN PLANNING

10. University Hall Retail Space Upgrades

13. Lunder Skylight





# Lunder Arts Center



Image Courtesy of Bruner/Cott,  
Photo by Robert Benson



# Lunder Arts Center

- Arts nexus for Lesley University & Community
- New home of College of Art & Design
- One-third of all Lesley students engaged in the arts
- Year-round program of gallery shows, exhibits, speakers open to the community



Image Courtesy of Bruner/Cott,  
Photo by Robert Benson



# Lunder Arts Center



- College of Art & Design joins Cambridge Arts and Education community
- Collaboration, professional development with art teachers

- Gallery talks for K-12 students, teachers
- Adult education courses in visual arts, art history
- Community access to art library



# Lunder Arts Center

## Atrium Entrance



Images Courtesy of Bruner/Cott,  
Photo by Robert Benson



# Porter Café Renovation

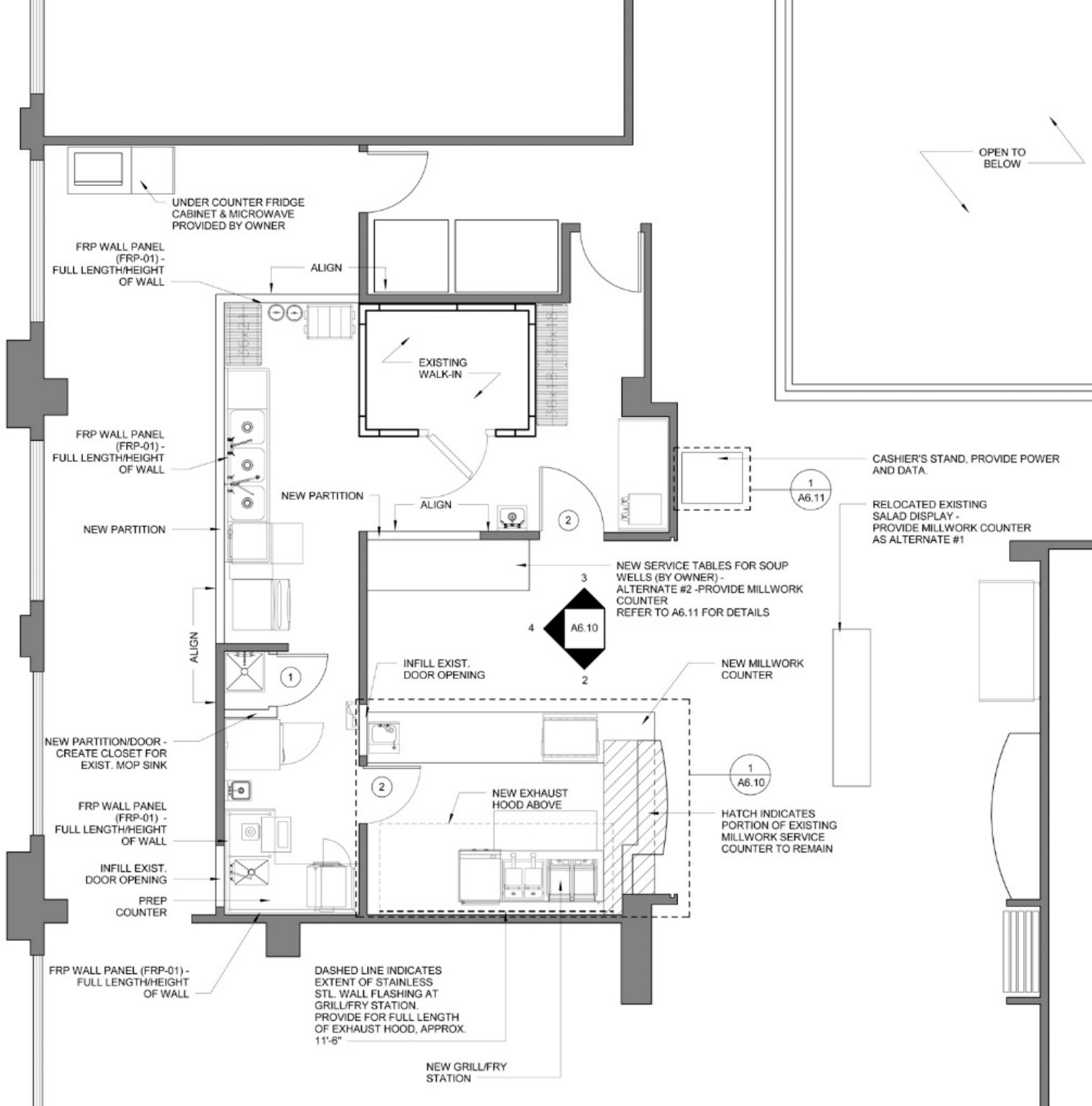


Images Courtesy of PCA



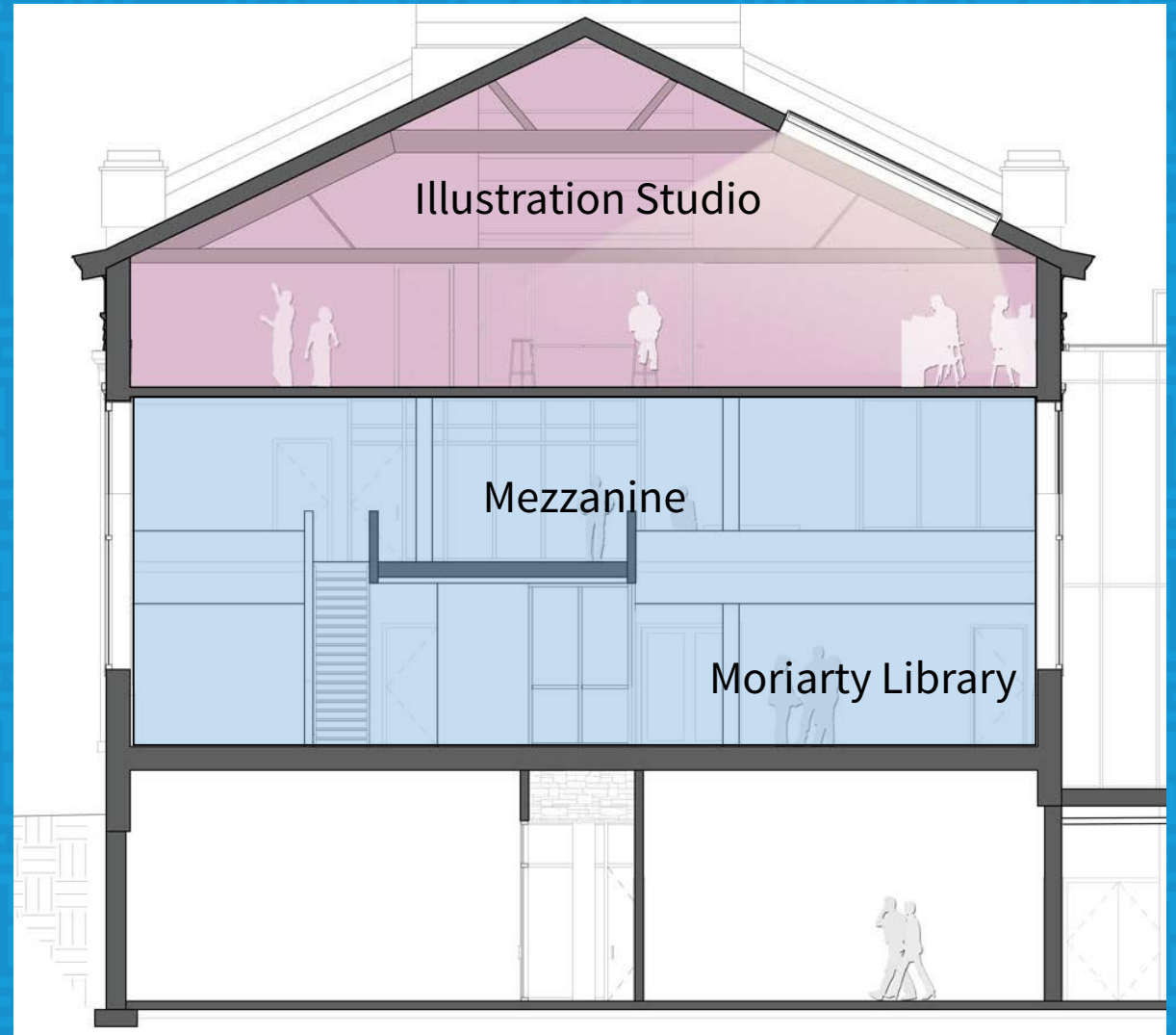
# Porter Café Renovation

- Expanded cooking capabilities
- Better serves a larger student population with LUCAD move



# Planning

- University Hall Retail Space Upgrades
- Lunder Skylight





# Doble Campus

## COMPLETED

2. Threshold, 82 Oxford

## IN CONSTRUCTION

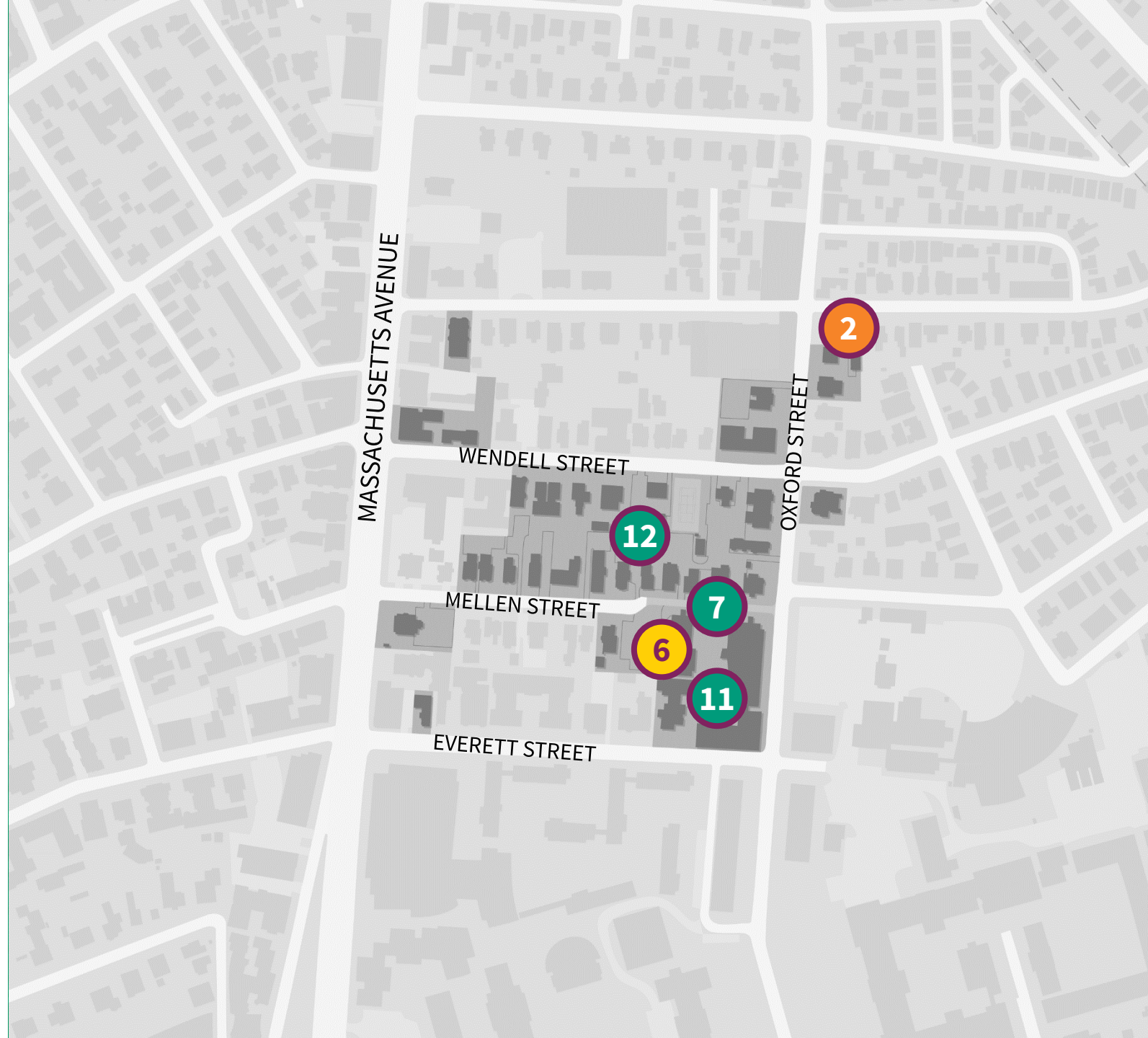
6. Doble Hall Interior Renovations

## IN PLANNING

7. Mellen Street Pedestrian Walk

11. Doble Systems Control Upgrade

12. Exterior Lighting Retrofit





# 82 Oxford

## Threshold Phase III

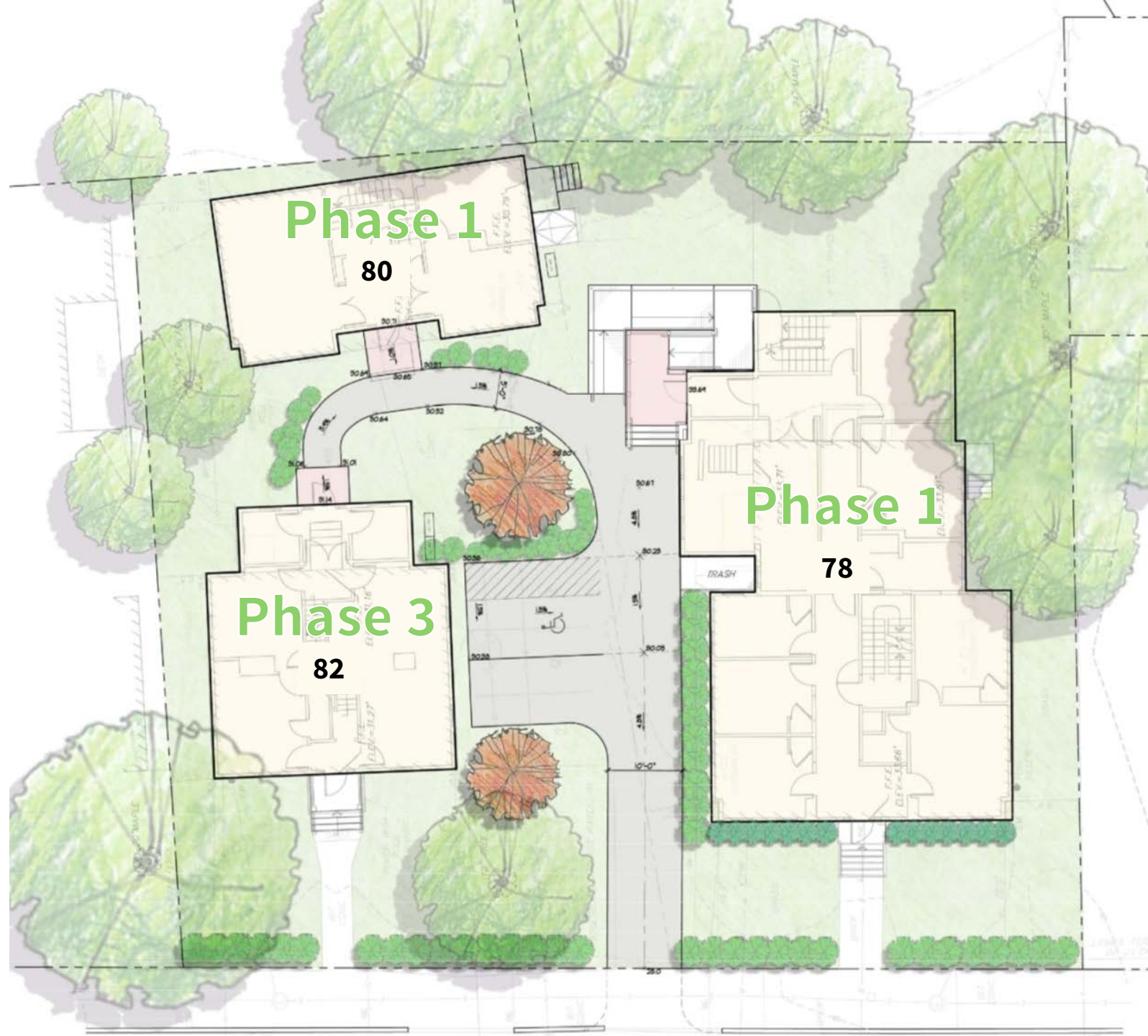
- Office space for Threshold Program
- Improved accessibility





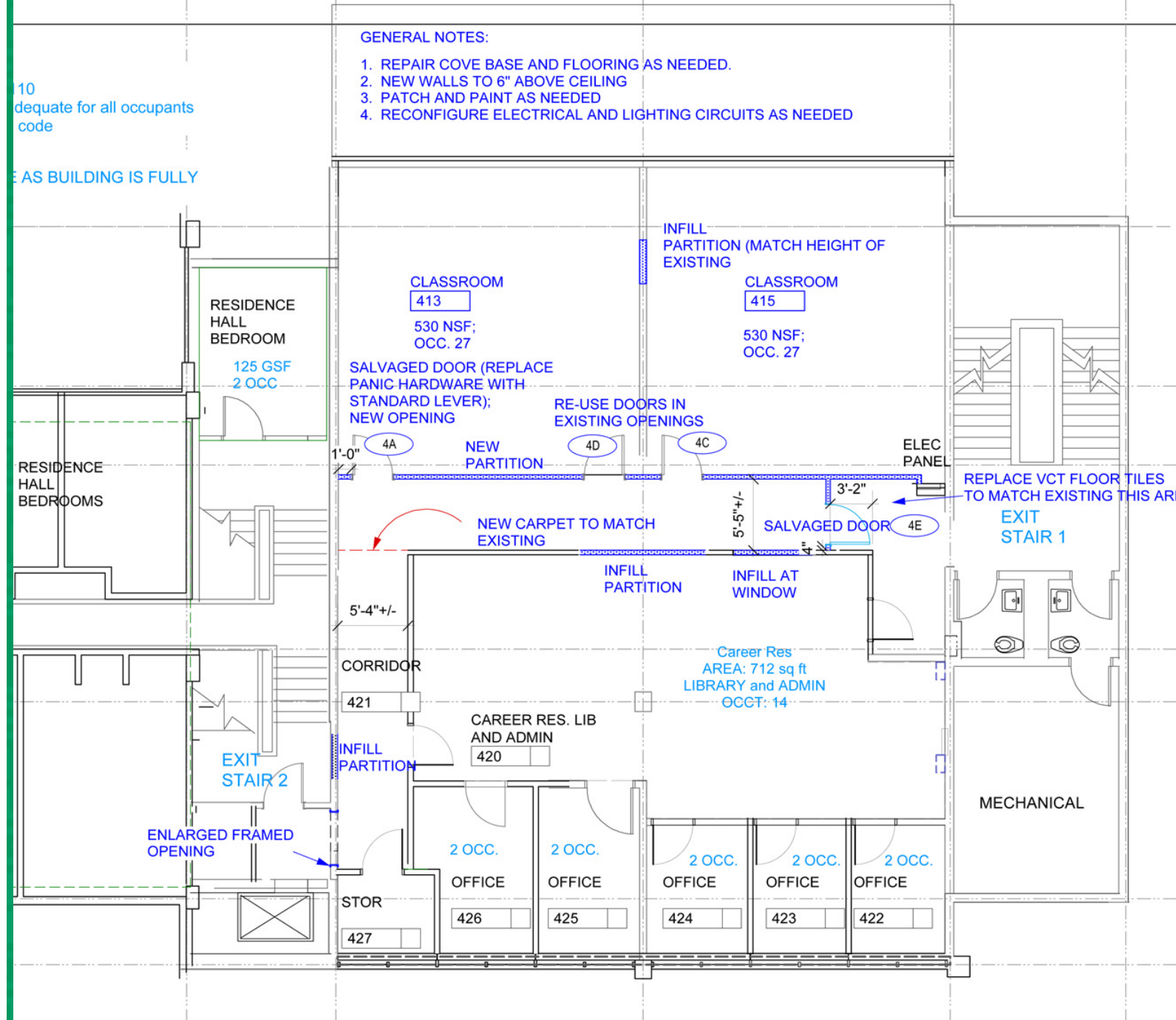
# Threshold Renovations

- Program serves young adults with cognitive and learning disabilities
- Renovations to better serve needs of graduates who live & work locally
- Improved living and learning spaces, exterior, and grounds
- 3 phases of work



# Doble Hall In Construction

- Improved ADA accessibility
- Improved interior circulation and wayfinding
- Refreshed interior finishes





# Lesley Entrance & Mellen Street Street





# Mellen Street



Image Courtesy of Pressley Associates



# Mellen Street



- Raised pedestrian way
- Landscape beautification and increased pervious area
- New entrance details
- Create entrance to Lesley University

- Quad made fully accessible via Mellen Street
- Removal of smoking area and “do not enter” sign from pedestrian entrance



# Mellen Street





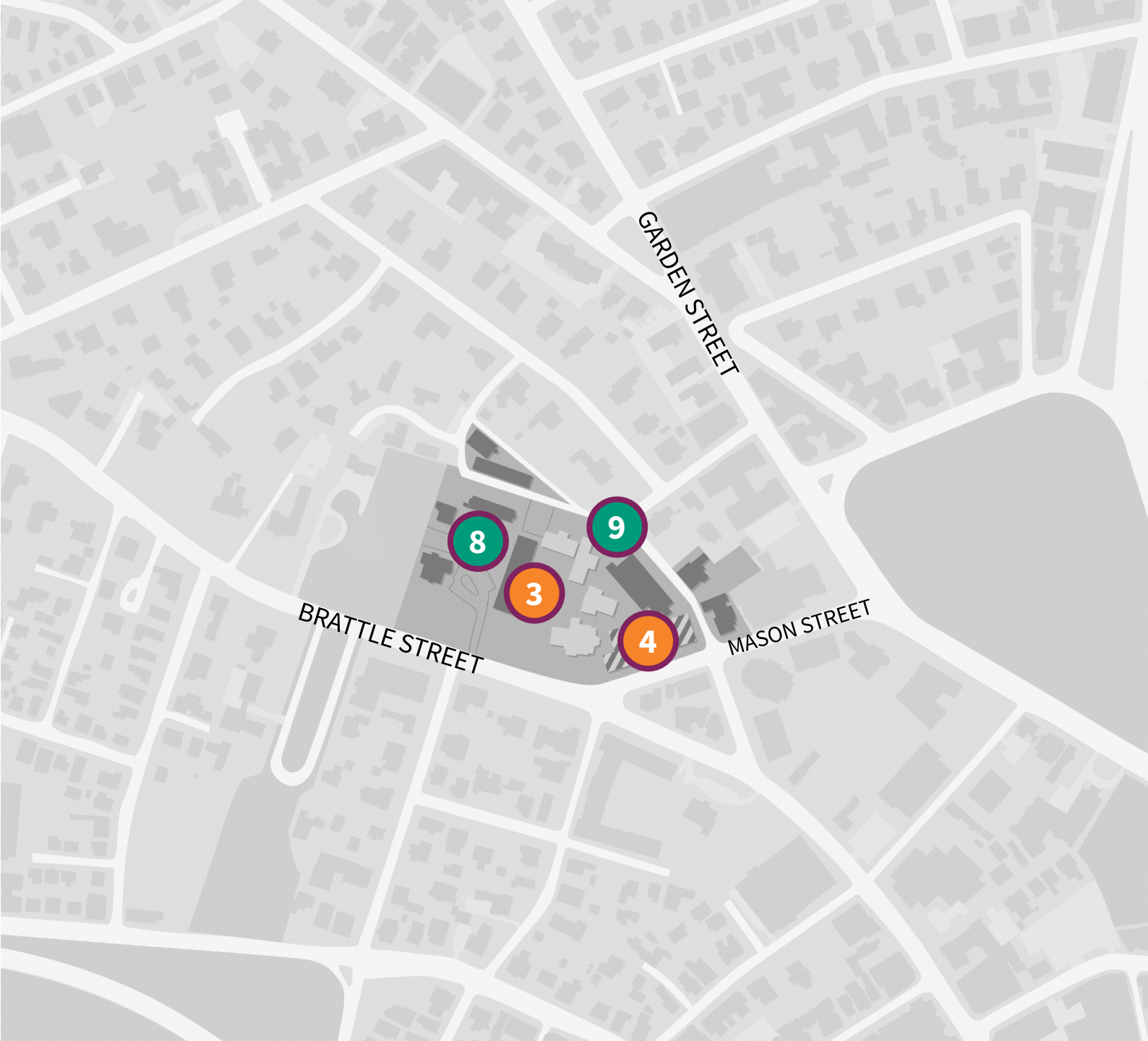
# Brattle Projects

COMPLETED

- 3. Lawrence Hall Interior Renovations
- 4. Sherrill HVAC – Phase 2

IN PLANNING

- 8. Community Garden Expansion
- 9. Electrical Grid Replacement – Phase 1

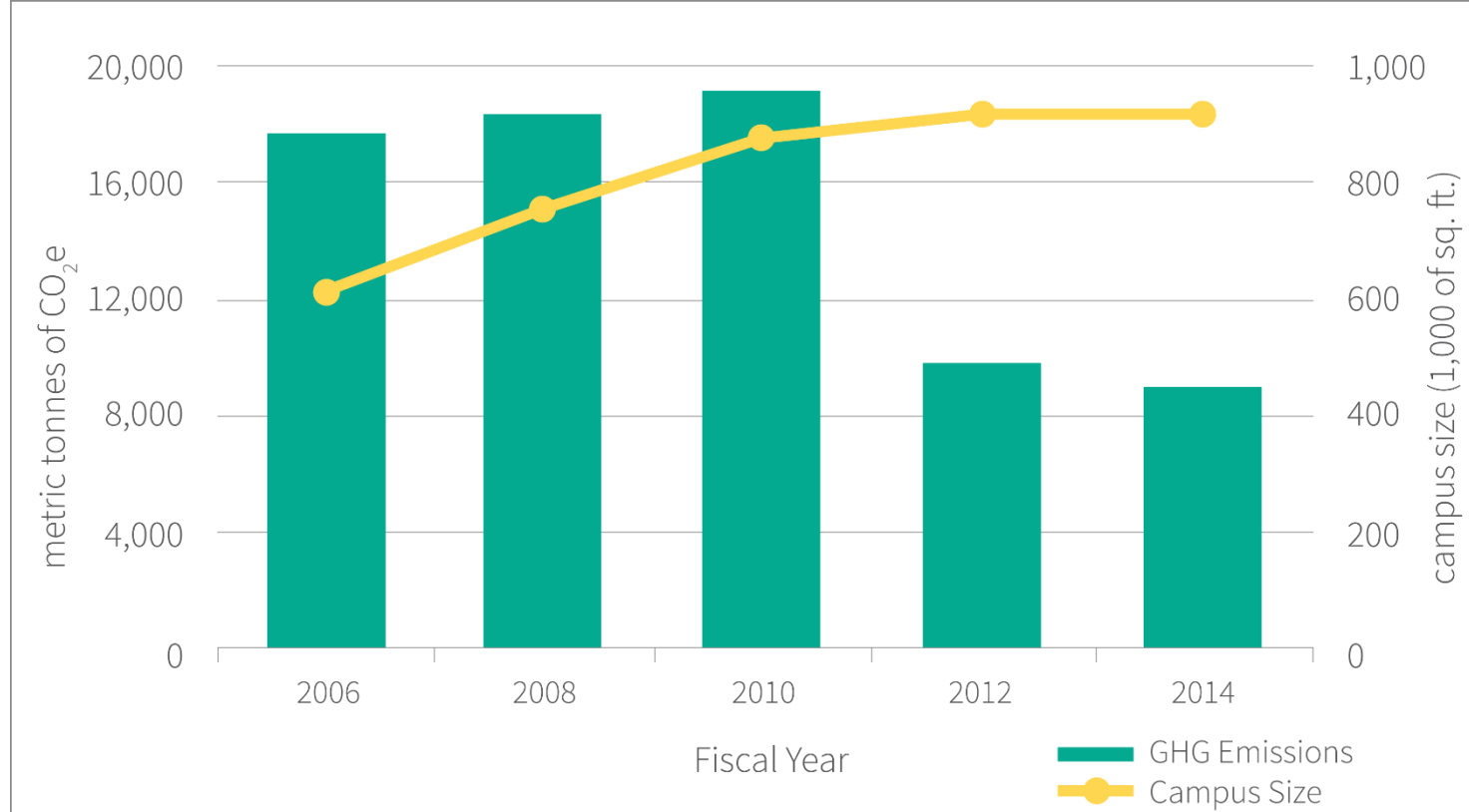




# Sustainability

## Greenhouse Gas Emissions

- Attained 35% emissions reduction despite 33% increase in campus square footage since 2006
- Updating Climate Action Plan
- Commuting goal = 38%





# Sustainability

## Bicycle Amenities

- 358 bicycle spaces
- 70 spaces constructed as part of Lunder Arts Center project
- Bicycle repair station on Doble Campus
- Investment in Hubway (15 spaces)
- Mass Bicycle Challenge participant



# Sustainability

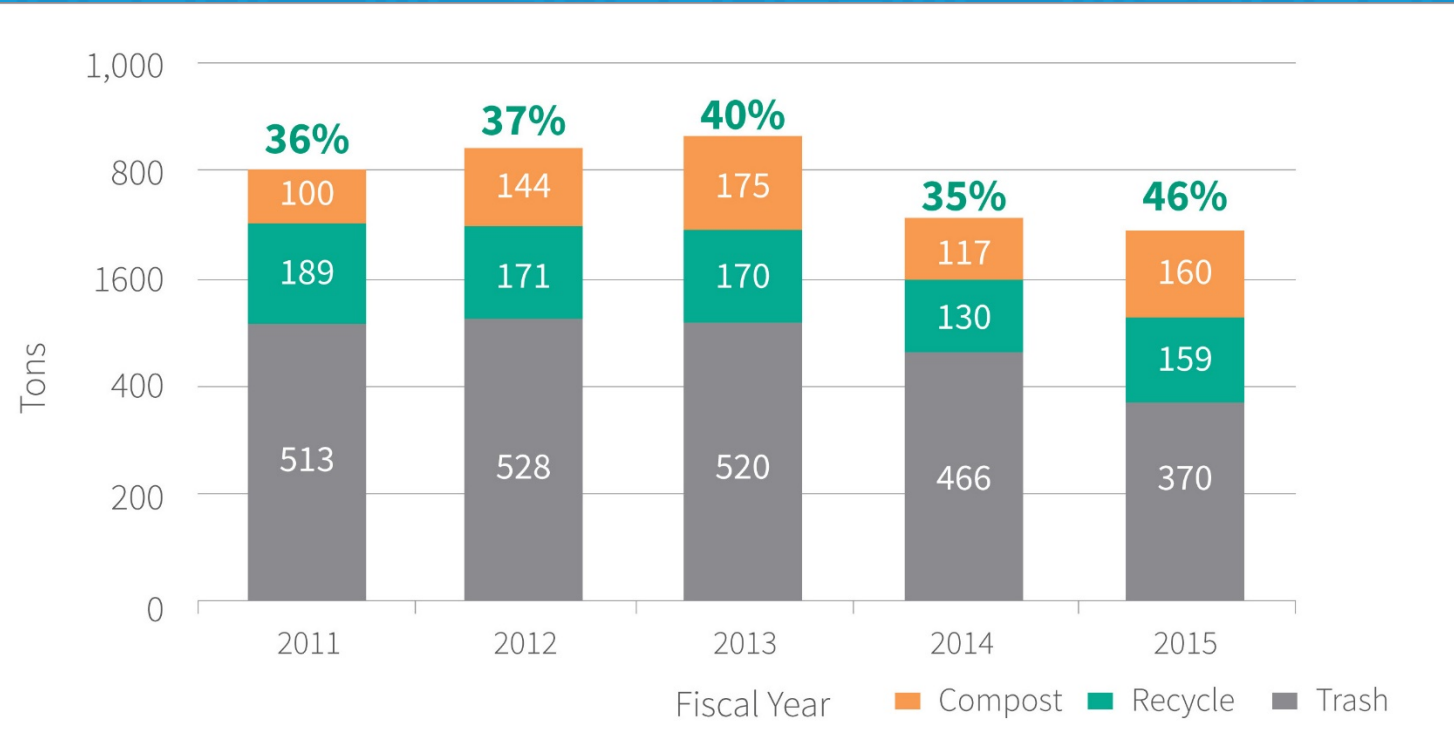
## Waste Diversion

### Goals

- 50% recycling rate
- Reduction in overall waste

### 2015 Achievements

- 28% decrease in total waste from two years ago
- Increase in total recycling and composting from **35% to 46%**
- **EPA Award** for successfully diverting food waste





# Sustainability Resiliency

- Mellen Street & Planning
- Brattle campus mapping existing permeable conditions



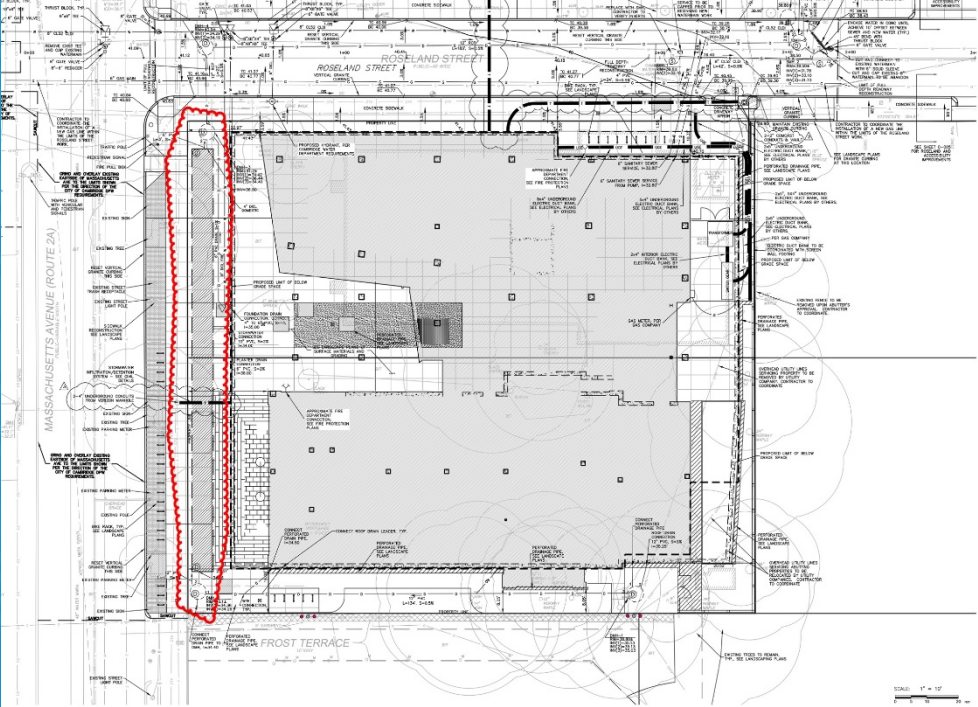
Image Courtesy of Pressley Associates





# Sustainability Resiliency

- Lunder 100K gallon stormwater retention system

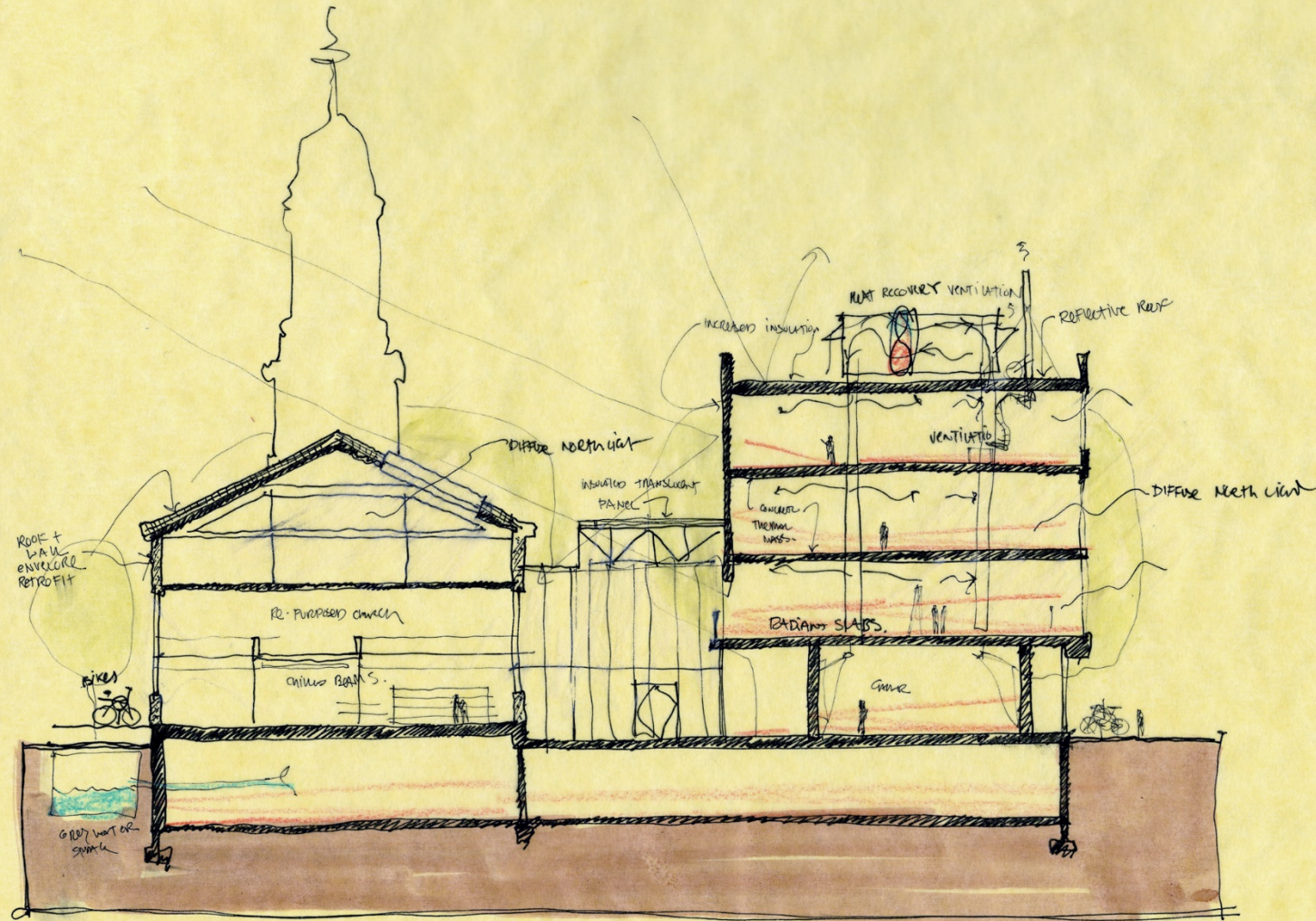




# Sustainability

## LEED Gold Building (Pending)

- 100K gallon stormwater retention system
- Reuse of 188-ton church
- Radiant floors & fan coil units
- Enthalpy wheels in air units (Heat Exchange)
- 40% reduction in overall energy use
- Air contaminants removed at source





# Cambridge Partnerships Kennedy-Longfellow

## Makerspace

- A learning environment that naturally ignites creativity, collaboration, and problem solving.
- A new way for our students and community partners to engage in learning and inquiry-based exploration in a 21st century context -- a place to play, tinker, design, and create.
- From designing simple machines to robotics to 3D printing, we seek to engage learners in authentic activities related to science, technology, engineering, arts, and mathematics (STEAM).





# Cambridge Partnerships

## The Creativity Commons

- Partnership with CPSD, CAC and CCF
- Innovation in Teaching and Learning
- Creative Process as Pedagogy in the classroom: Imagine, Create, Critique, Exhibit





# Cambridge Partnerships

## The Creativity Commons

### 8<sup>th</sup> Grade Art & Science Project –

- Students use both computers and paint to describe what they have learned about ecosystems.



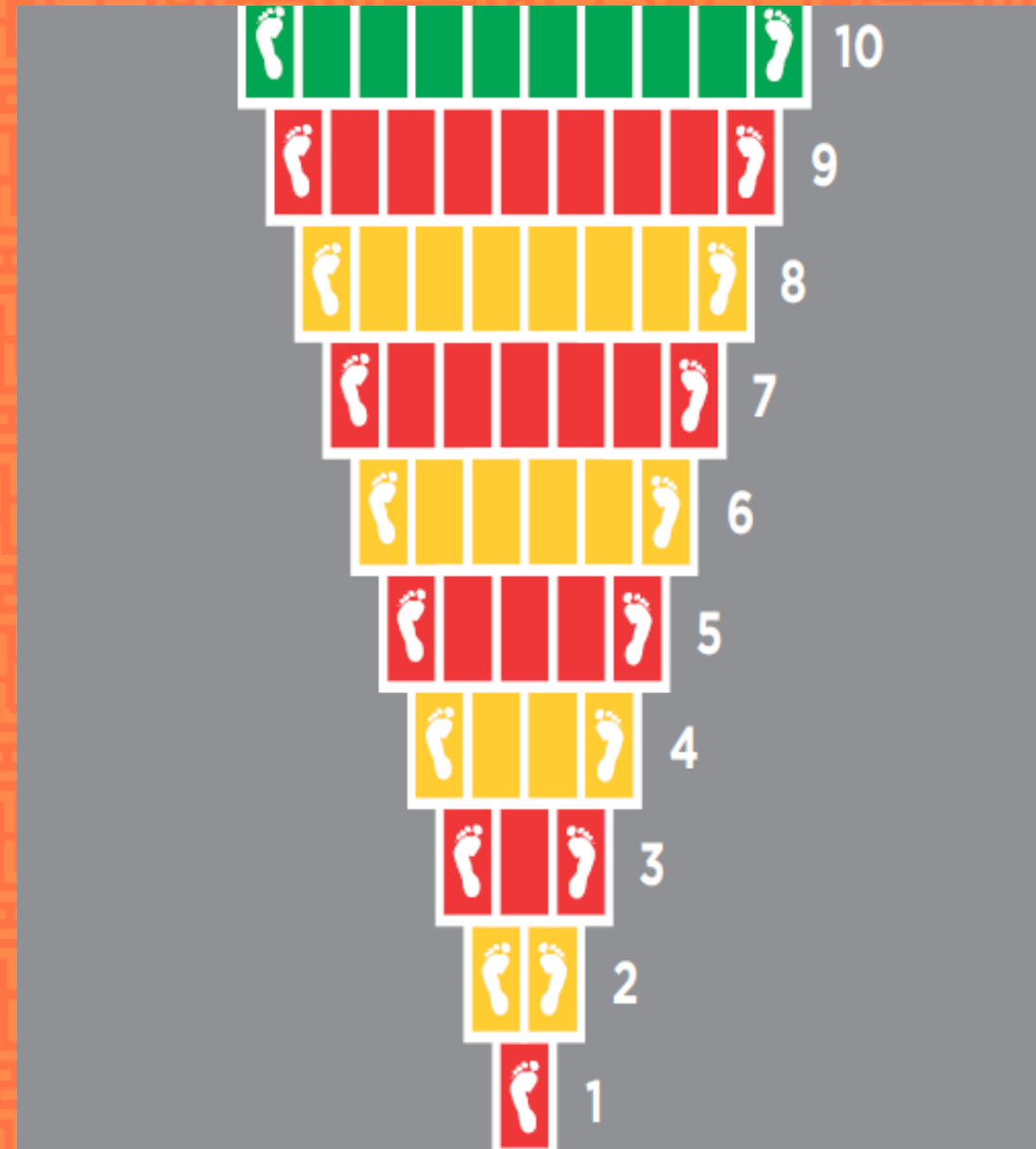


# Cambridge Partnerships

The Creativity Commons

## Sidewalk Math –

- Engages young children in learning mathematical patterns by hopping, jumping, and skipping through colorful hopscotch-like patterns on the sidewalk.





# Cambridge Partnerships

## The Creativity Commons

### Family Engagement Initiative –

- The Creativity Commons hosted several workshops at Lesley University
- Supported CPSD administrators, families and teachers in designing and implementing the Initiative for the district.





# thank you



Images Courtesy of Bruner/Cott,  
Photo by Robert Benson

**Town Gown**  
Planning Board  
February 2, 2016



# Antennas

## Existing

### University Hall

- Hidden, painted antennas within red tile details

### Additional

- Small wave antenna on 30 Mellen – point to point to 1 Wendell and 78 Oxford
- Fiber optic work **eliminated 5 radio dishes in 2014**

### Future

- Committed to attractive building aesthetics and City review and approval process

City of Cambridge  
Camera & Antenna  
for Fire Emergency

AT&T

Sprint

University  
Microwave  
Dish  
(Phone  
Connection  
between  
campuses)

