

Town Gown Report

2016



Lesley
UNIVERSITY

LESLEY UNIVERSITY

**Town Gown
Report**

2016

Prepared for the **City of Cambridge**
Submitted by the **Lesley University**
Office of Campus Planning and Operations

Table of Contents

■ Existing Conditions	1
Faculty & Staff	1
Student Body	2
Student Residences	3
Facilities & Land Owned	4
Real Estate Leased	6
Payments to City of Cambridge	6
Institutional Shuttle Information	6
■ Future Plans Narrative	9
Planning Context	9
Sustainability	10
Precinct and Site Specific Plans	12
■ Relationship With Cambridge Public Schools	19
■ List of Projects	23
■ Campus Maps	25
Map 1: Real Estate Owned and Leased	5, 25
Map 2: Shuttle Routes	7, 25
Map 3: Project Map	24, 25
Map 4: Porter Campus	26
Map 5: Doble Campus	27
Map 6: Brattle Campus	28
■ Transportation Demand Management	29
Commuting Mode of Choice	29
Point of Origin for Commuter Trips to Cambridge	30
TDM Strategy Updates	30
■ Bicycle Facilities	31
■ Antenna Installations	33
■ Institution Specific Information Request	35

Existing Conditions

Faculty & Staff

The following headcount and FTE figures for Cambridge-based faculty include all faculty and staff members from the Lesley University College of Art and Design (since 2013, the name of The Art Institute of Boston). All LUCAD instruction relocated to Cambridge beginning the Spring 2015 semester, when the Lunder Arts Center was completed.

Cambridge Based Staff

	2012	2013	2014	2015	2016	2026 (projected)
Head Count	371	380	383	371	366	400
FTE	355	365	368	358	353	386

Cambridge Based Faculty

Head Count	188	189	184	179	175	200
FTE	173	176	169	164	165	183

Cambridge Residents Employed at Cambridge Facilities

Head Count	63	63	66	62	58	70
------------	----	----	----	----	----	----

Adjuncts

Head Count				331	456	300
------------	--	--	--	-----	-----	-----

Student Body

The following are Cambridge-based student body figures for the academic years 2012 through 2016. Lesley University has not conducted 10-year enrollment projections.

Undergraduate Students

	2012	2013	2014	2015	2016
Day	1,546	1,515	1,471	1,382	1,441
Evening	328	355	335	304	267
Full Time	1,485	1,441	1,455	1,367	1,427
Part Time	389	429	351	319	281
Total	1,874	1,870	1,806	1,686	1,708

Graduate Students

Day	0	0	0	0	0
Evening	2,942	2,701	2,362	2,472	2,232
Full Time	1,416	1,321	1,057	1,269	942
Part Time	1,526	1,380	1,305	1,203	1,290
Total	2,942	2,701	2,362	2,472	2,232

Non-Degree Students

Day	1,687	1,476	1,811	1,987	1,576
Evening	280	912	936	668	809
Total	1,967	2,388	2,747	2,655	2,385

Total Students

Total	6,783	6,959	6,915	6,813	6,325
--------------	--------------	--------------	--------------	--------------	--------------



Student Residences

The following are Cambridge student residence figures for the academic years 2012 through 2016. Lesley University is assessing its future student bed requirements but currently has no plans to construct additional student residences in the next ten years. As such, projected figures reflect current bed capacity.

Student figures are comprised of residence halls located on our Doble and Brattle Campuses and approximately 40 students in the Threshold Program, a residential program for adults with cognitive and learning disabilities, living on Oxford Street. A significant portion of students with Cambridge addresses are permanent Cambridge residents, and are likely to have vehicles garaged in Cambridge, however Lesley does not track this information. Undergraduates living on campus are not allowed to bring cars to campus.

For the purposes of this report, affiliate housing is defined as other housing owned by the institution that is available only to members of the academic community. Affiliate housing does not include either dormitories or housing available for rent to persons who are unaffiliated with the institution.

Lesley has historically had a large number of permanent Cambridge residents and Cambridge Public School employees enrolled in Graduate programs.

Undergraduate Students Residing in Cambridge

	2012	2013	2014	2015	2016	2026 (projected)
In Dormitories	885	842	828	853	873	889
With Cars garaged	0	0	0	0	0	0
Affiliate Housing	0	0	0	0	0	0
Non-affiliate Housing	81	91	94	80	64	100

Graduate Students Residing in Cambridge

In Dormitories	0	0	14	13	0	0
With Cars garaged	0	0	0	0	0	0
Affiliate Housing	0	0	0	0	0	0
Non-affiliate Housing	228	178	153	144	151	166

Facilities & Land Owned

The following are Cambridge-based facilities figures for the years 2012 through 2016.

Acres

	2012	2013	2014	2015	2016	2026 (projected)
Tax Exempt	13.64	13.64	13.64	13.64	13.64	13.64
Taxable	2.43	2.43	2.43	2.36	2.36	2.36
Number of Buildings	59	59	59	58	58	58

Dormitories

Number of Buildings	22	22	22	22	22	22
Number of Beds	890	890	890	890	889	889

Size of Buildings

Institutional/Academic	496,340	496,340	496,340	550,225	550,225	550,225
Student Activities/Athletic	26,030	26,030	26,030	26,030	26,030	26,030
Dormitory/Nontaxable Residential	243,229	244,659	244,659	244,659	244,659	244,659
Commercial	101,316	101,316	101,316	101,316	101,316	101,316
Taxable Residential	76,163	76,163	76,163	72,513	72,513	72,513
Total	943,078	943,793	943,793	994,743	994,743	994,743

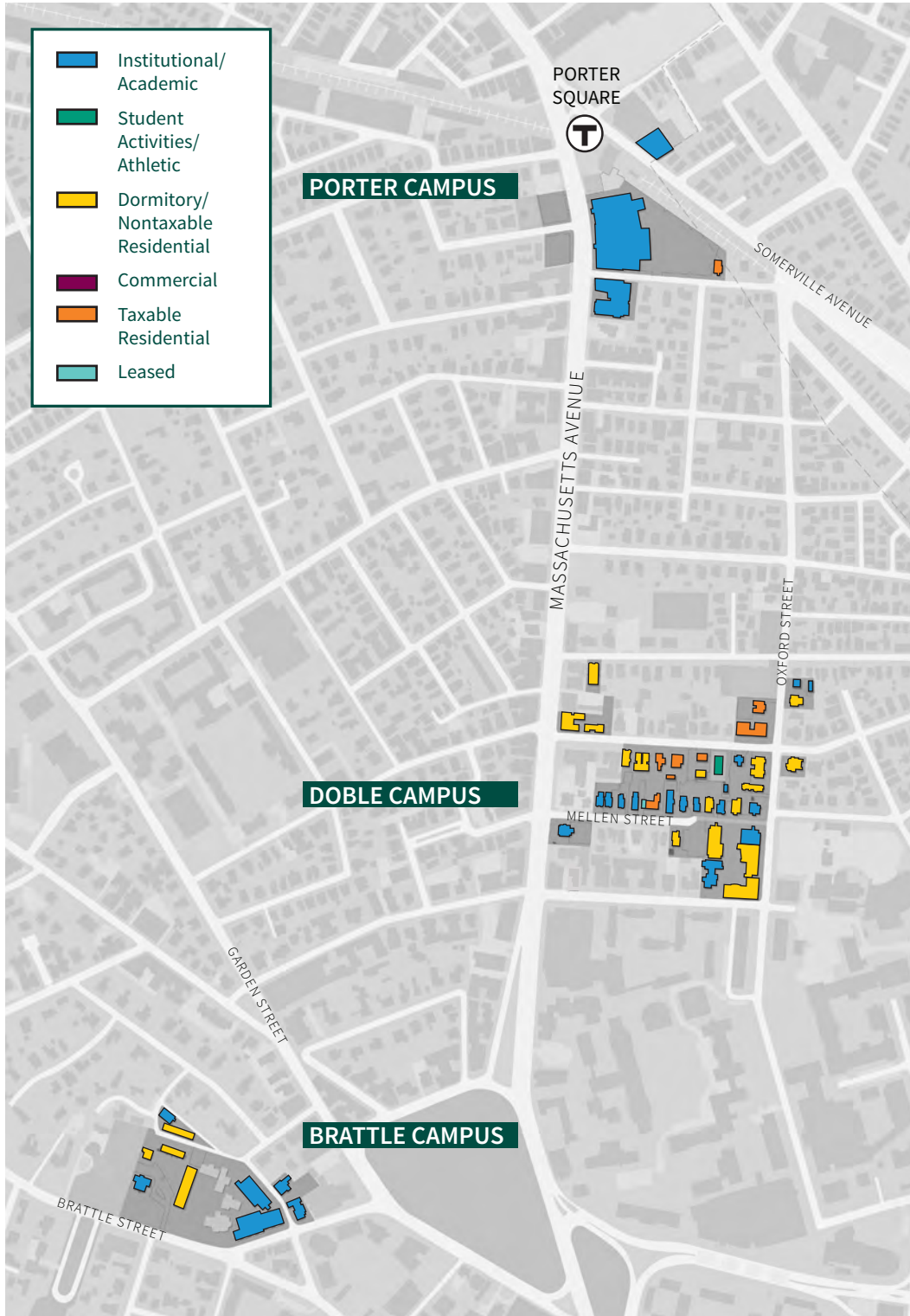
Number of Non-Dormitory Housing Units

Affiliate Housing - Tax Exempt	1	1	1	1	1	1
Affiliate Housing - Taxable	0	0	0	0	0	0
Other Housing - Tax Exempt	0	0	0	0	0	0
Other Housing - Taxable	81	81	81	74	74	74

Number of Non-Dormitory Housing Buildings

Affiliate Housing - Tax Exempt	1	1	1	1	1	1
Affiliate Housing - Taxable	0	0	0	0	0	0
Other Housing - Tax Exempt	0	0	0	0	0	0
Other Housing - Taxable	10	10	10	9	9	9

Real Estate Owned and Leased by Lesley University



LESLEY'S PROPERTY AND BUILDINGS ARE ILLUSTRATED BY PRIMARY USE. SEVERAL BUILDINGS ARE MIXED USE. MOST NOTABLY, UNIVERSITY HALL, LOCATED AT 1815 MASSACHUSETTS AVENUE, CONTAINS GROUND FLOOR RETAIL WITH ACADEMIC SPACE ABOVE.

Parking

Lesley University maintains 573 parking spaces in Cambridge, as detailed below.

Students (resident & commuter)	20
Faculty, Staff & Visitors	286
Commercial and Residential Tenants	267
Total	573

Property Transfers

Lesley University has not purchased or sold any Cambridge properties since filing its previous Town Gown Report. At this time, the University has no further plans to either dispose of or acquire any properties in Cambridge.

Real Estate Leased

The University currently leases the residence located at 15 Mellen Street. In addition, the University has a lease relationship with the Buckingham, Browne and Nichols School (BB&N) for use of athletic facilities through 2018.

Payments to the City of Cambridge

	FY 12	FY 13	FY 14	FY 15	FY 16
Real Estate Taxes Paid	\$595,484	\$621,937	\$632,768	\$699,372	\$699,754
Payment in Lieu of Taxes	—	—	—	—	—
Water & Sewer Fees Paid	\$341,797	\$309,374	\$348,047	\$367,012	\$373,267
Other Fees & Permits Paid	\$48,002	\$189,914	\$620,892	\$210,986	\$93,774
Total Payments	\$985,283	\$1,121,225	\$1,601,707	\$1,277,370	\$1,166,795

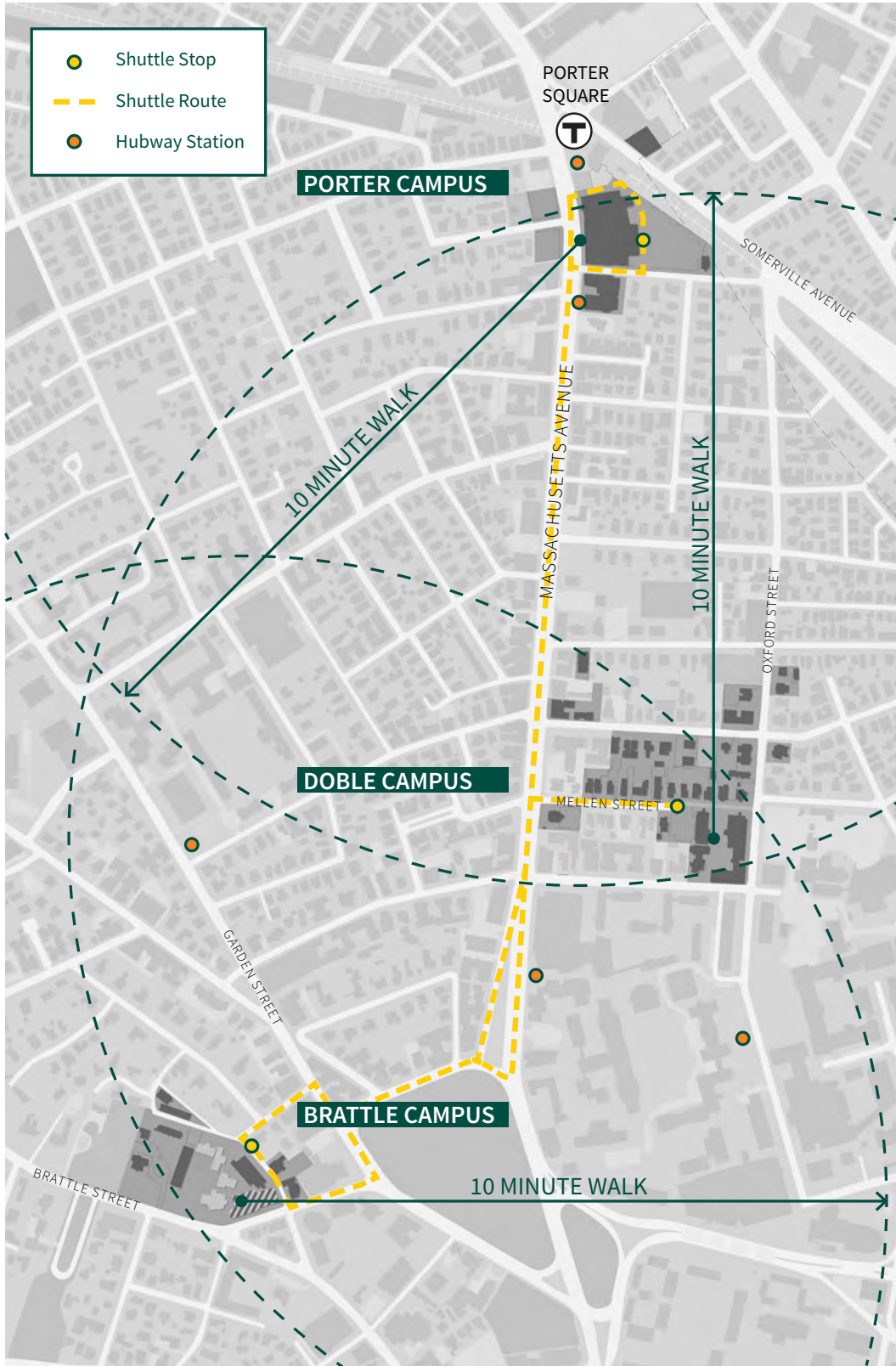
Institutional Shuttle Information

Lesley University provides a shuttle service during the Spring and Fall semesters when classes are in session. Shuttle service consists of two 15 passenger vans on continuous loops between the University's three Cambridge campuses (Doble, Porter and Brattle) Monday thru Friday starting at 7:10 AM and ending at 11:25 PM. In addition, a weekend shuttle van operates from 10:00 AM to 10:20 PM. Last year, approximately 344 people used the shuttle service on a daily basis.

The Lesley shuttle stops are:

- Doble Campus, at the Mellen Street turnaround (approximately 30 Mellen St.)
- Porter Campus, behind University Hall, 1815 Massachusetts Avenue
- Brattle Campus, at the corner of Hastings and Phillips Streets

Lesley University Shuttle Routes



LESLEY'S TRI-CAMPUS STRUCTURE IS ONLY MINUTES APART BY FOOT AND IS READILY SERVED BY SEVERAL NEARBY TRANSPORTATION OPTIONS, INCLUDING MBTA AND HUBWAY STATIONS.

Institutional Shuttle Information (Spring/Fall 2016)

Route Name	Vehicle Type & Capacity	Frequency of Operation	Hours of Operation	
			Weekday	Weekend
Shuttle Van 1	15 Passenger Van	10 minutes	7:10 AM - 7:50 PM	
Shuttle Van 2	15 Passenger Van	10 minutes	7:15 AM - 11:25 PM	
Shuttle Van Weekend	15 Passenger Van	2 hours		10:00 AM - 10:20 PM Saturday & Sunday

Future Plans

Planning Context

With the completion and opening of the Lunder Arts Center complex at 1801 Massachusetts Ave. — the largest single capital project in Lesley University’s 108-year history — we have paused to gauge priority needs. 2016 has been a time of assessment. As such, no significant building or renovation projects are currently approved.

2016 has also been marked by transition. The University selected a new president (Jeff Weiss), new deans at the Graduate School of Arts and Social Sciences and the undergraduate College of Liberal Arts and Sciences, Vice President of Adult Learning, Director of Multicultural Affairs and Student Inclusion, Director of the Threshold program and a new Dean of the Library. It is important to note that in the midst of this flux, the University’s strategic-planning efforts are deliberately limited, focusing on a time of transition for new leadership to express their vision and goals.

The current Strategic Plan and accompanying implementation plans cover 2012-2016. An extension of the strategic plan spans an additional 18-24 months. A sequence of university-wide meetings took place to solicit input for the updated plan which was then brought to the Lesley community and ultimately to the Board of Trustees. The existing plan incorporates facilities as a means to reach goals that include:

- 1. Focus on quality and value:** Providing outstanding academic programs, inspiring experiential learning opportunities and engaging co-curricular programs and activities.
- 2. Increase enrollment and strengthen diversity:** Striving for steady enrollment growth through our degree programs, innovative collaboration with transfer institutions and international partnerships while intentionally increasing the cultural and economic diversity of the student body.
- 3. Support student success:** Coordinating the necessary resources for all students to thrive, leading to exemplary retention and graduation rates for each undergraduate and graduate degree program.

4. **Advance research, scholarship and professional development:** Increasing support for faculty research, scholarship and creative activity that enhances faculty contributions to their disciplines and classrooms, enriches student learning and contributes to the common good.
5. **Develop a nexus for the arts in Cambridge:** Extending the power of the arts throughout the University, PreK-12 education and the community by building the Lunder Arts Center as the center of a Porter Square Arts District that encourages and supports community-wide creativity.
6. **Reach beyond our borders:** Expanding efforts to recruit international students, develop new partnerships with international students (while supporting existing ones) and supporting existing and creating new international scholarly exchanges for faculty and staff.

The decision to extend the Strategic Plan through the new president's first year was intended to provide stability during a time of transition while maintaining flexibility for new leadership to undertake comprehensive planning initiatives as soon as they deemed them appropriate. Consequently, the process of developing a new strategic plan will be initiated next fall.

Sustainability

Lesley's commitment to sustainability continues to permeate all facilities and infrastructure work the University conducts. All new construction is designed to meet a minimum of LEED Silver standards and every renovation is viewed as an opportunity to improve energy efficiency. The most recent building, the Lunder Arts Center, will be receiving LEED Gold status. The University has made significant strides in reducing fuel and energy demands in existing buildings, through such initiatives as large lighting retrofits, providing digital controls for heating and cooling by zone,

and substantially increasing the volume of recycled and compostable materials throughout our campuses.

Waste Diversion

Lesley's recycling rate continues to increase while overall waste diminishes. Total waste has decreased by 34% in the first three years since piloting innovative food waste reduction initiatives. These efforts were recognized by the federal Environmental Protection Agency, as the University was among those awarded a Regional Food Recovery Achievement Certificate.

Despite reducing the amount of food composted at its source, the University continues to achieve high recycling rates. Last year, we recycled 49.8% of all waste, which includes compost, a 150% improvement over 2009, when the University began tracking such performance metrics. The University's recycling goal is 50%.

Compost

Since it first began tracking and evaluating its recycling efforts in 2009, Lesley has increased annual composting tonnage from 20 tons to nearly 200 tons. Lesley continues to make waste diversion a priority with a strong emphasis on composting. With the MassDEP Organic Waste Ban in effect since October 2014, composting efforts were reenergized. Although Lesley had been in compliance years before the ban, compost tonnage increased as a result of focused outreach, education, and forethought, particularly on the part of food service provider Bon Appetit who composts all food scraps during food preparation. Pilot compost programs were initiated in dormitories and offices last year as well.

With the inability of local service providers to handle compostable tableware, the University is accessing existing operations and making changes. Compost collection has changed from Save That Stuff to Casella, which still facilitates front of house composting. Related to this change, the University has made compost contamination a focus. Evaluation of existing retail and restaurant

operations resulted in various initiatives, such as new signage, personnel education, and additional waste bins.

Recycling

Recycling at Lesley is single-stream, meaning that all recyclable items go into the same receptacle. Recycling can be found throughout each of the campuses. Recycled tonnage is plateauing as Lesley works to reduce the total amount of waste produced. However, last year, we achieved our highest rate of construction recycling at 94%, which is counted separately from Lesley's total recycling rate. Also, Lesley works to recycle items not included in its normal operations. Printer toner cartridges, batteries and electronic waste is collected and recycled biannually. Also, as part of a "Sustainable Cleanout," Lesley donates mattresses, refrigerators, and furniture from dormitories, offices and classrooms on a yearly basis.

Working with our food service contractor, the University evaluated and adjusted existing operations to comply with policy changes in Cambridge regarding #6 plastic. This type of plastic has been removed not only from Lesley food service halls but also from retail/restaurant tenants. In addition, based on guidance from the Cambridge Public Works Department, Lesley has notified our catering providers of the new ordinance as well.

For more information on Lesley's recycling efforts, please visit our website: <http://www.lesley.edu/sustainability/waste-diversion/>.

Greenhouse Gas Emissions

Lesley signed the Carbon Commitment, previously known as the American College & University Presidents' Climate Commitment (ACUPCC), setting greenhouse gas reduction goals of 35% by 2030, with a baseline year of 2006. The University has attained a 62% reduction already, see graph on page 13. What is even more impressive about this achievement is that it was accomplished despite a 33% increase in campus square footage.

Lesley was able to reach this goal by investing in the following greenhouse gas emission reduction strategies:

- Increasing lighting efficiency
- Retrofitting heating, ventilation, and air conditioning (HVAC) equipment
- Constructing all new buildings to US Green Building Council (USGBC) LEED standards
- City of Cambridge Stretch Code
- Converting oil boilers to natural gas boilers
- Purchasing more sustainable electricity
- Requiring that all new appliances and electronics purchased be Energy STAR rated
- Reducing airline travel and offering more online learning options

In response to this success, the University is in the process of reassessing future goals as part of an update to its current Climate Action Plan (CAP). As the University continues to prioritize energy upgrades, future investments will have longer returns on investment. A financial strategy is needed to avoid slowing the current progress.

Energy Efficiency

Over the last year, the University invested in several construction and renovation projects with energy efficiency benefits to its facilities. Likewise, the University made significant strides in reducing fuel and energy demands in existing buildings through infrastructure upgrades such as large lighting retrofits and digital controls for heating and cooling by zone. As an example of the type of infrastructure upgrades that continue to be performed, Lesley finished upgrading the building management system, cabling and controls that service buildings on our Doble Quad. In conjunction with this project, exterior lighting on the Doble Campus was replaced with efficient LED fixtures.

Currently, Lesley is conducting an energy audit of all of our buildings to determine what next steps can be taken to improve efficiency.

Resilience

Lesley has looked to recent City of Cambridge reports and assessments to help us define issues of resiliency. The two areas of concern for Lesley with regards to environmental resilience (as opposed to health or other kinds of emergency preparedness) are storm and extreme heat events. The University installed a 100,000 gallon retention system to collect and slowly release stormwater runoff into the soil near the new Lunder Arts Center. Recently, the University cataloged all surface area by type (impervious vs. pervious) and kind (grass, tree, porous paver, concrete, etc.). With this information now available, we are examining how improvements can be made to handle storm events. The recent improvements to Mellen Street have increased total pervious area.

Likewise, the University is committed to reducing its electrical consumption. Lesley has invested in lighting efficiency overhauls, efficient chillers, tight building envelopes, and even radiant floors and fan coil units to cool nearby air in summer months without taxing the ventilation system. Also, Lesley is investigating landscape treatments to cool both exterior environments as well as buildings. In the case of a loss of power spanning several days, the University is preparing a response procedure that includes moving students in compromised buildings to environments with backup power available. Several of the larger buildings on the Doble Campus have generators and large lounge spaces that could be converted in the case of an emergency to temporary sleeping/living areas.

Behavior Change

The Strategic Plan calls for continued sustainability improvements and the provision of regular data on sustainability initiatives. Lesley plans to continue to increase community awareness of personal behavior as it relates to sustainability and energy conservation and offer students, faculty, staff and the community at large a variety of programs underscoring environmentally responsible norms. The University invites local vendors to celebrate its annual Campus Sustainability Day in the fall along

with a week of Earth Day events in the spring. Among Lesley's activities are an Environmental Club, Green Office Initiative, the Lesley Urban Garden, Commuter of the Month, and a variety of other programs. More information about Lesley's sustainability efforts is available at <http://www.lesley.edu/sustainability>.

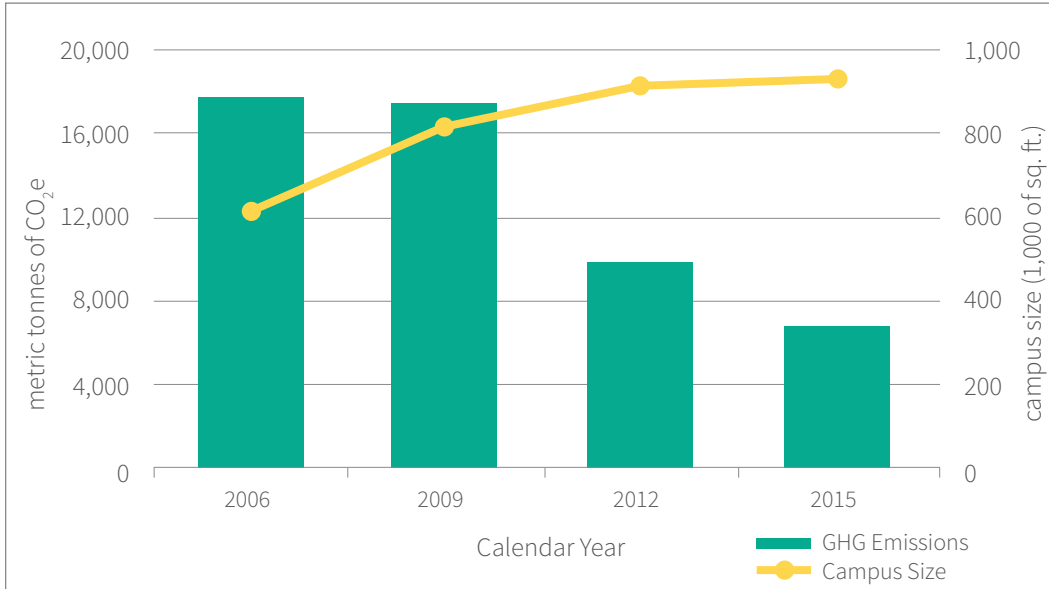
Accessibility

Lesley University is committed to ensuring its existing buildings and campus spaces are accessible to people with disabilities and all new construction is designed to meet accessibility code requirements. In addition, whenever possible, older and historic, pre-ADA structures are retrofitted to afford the greatest level of accessibility achievable. All but one classroom and all laboratories are now fully accessible. The remaining classroom, in a Victorian property at 33 Mellen Street, will be made accessible in a future renovation project.

Fitness Facilities

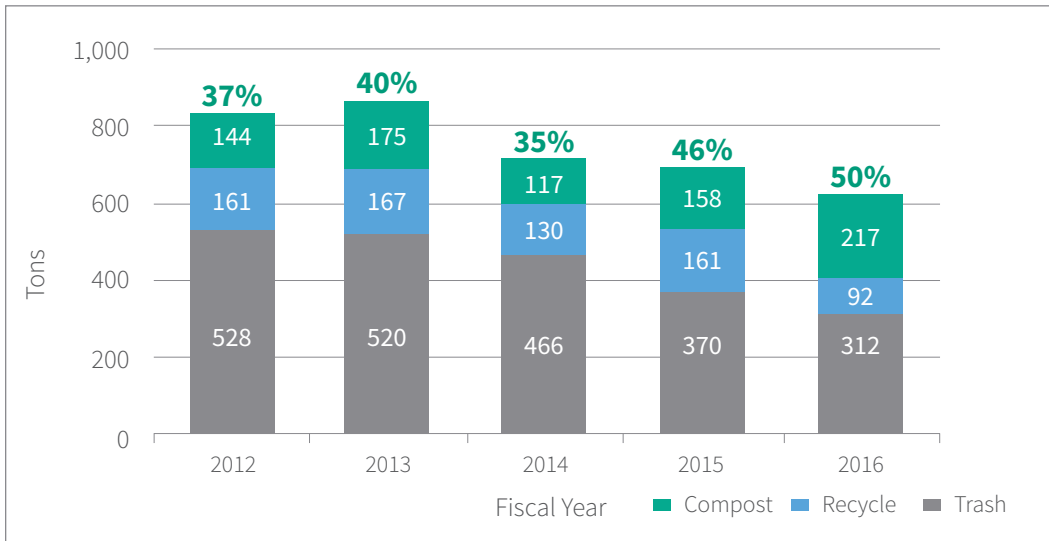
Eight of Lesley University's NCAA Division III athletic teams continue to use fields, courts and facilities at Buckingham Brown & Nichols (BB&N) School, the local private high school on Gerry's Landing Road. Baseball and softball teams practice and play at Somerville's Trum Field while men's and women's cross-country teams, because of the nature of the sport, travel to various locales around New England to compete. However, increased varsity athletics participation has prompted Lesley administrators to look for suitable long-term alternatives in Cambridge or surrounding towns. Lesley and BB&N have extended contracts for three years for the use of facilities to 2018.

Greenhouse Gas Emissions

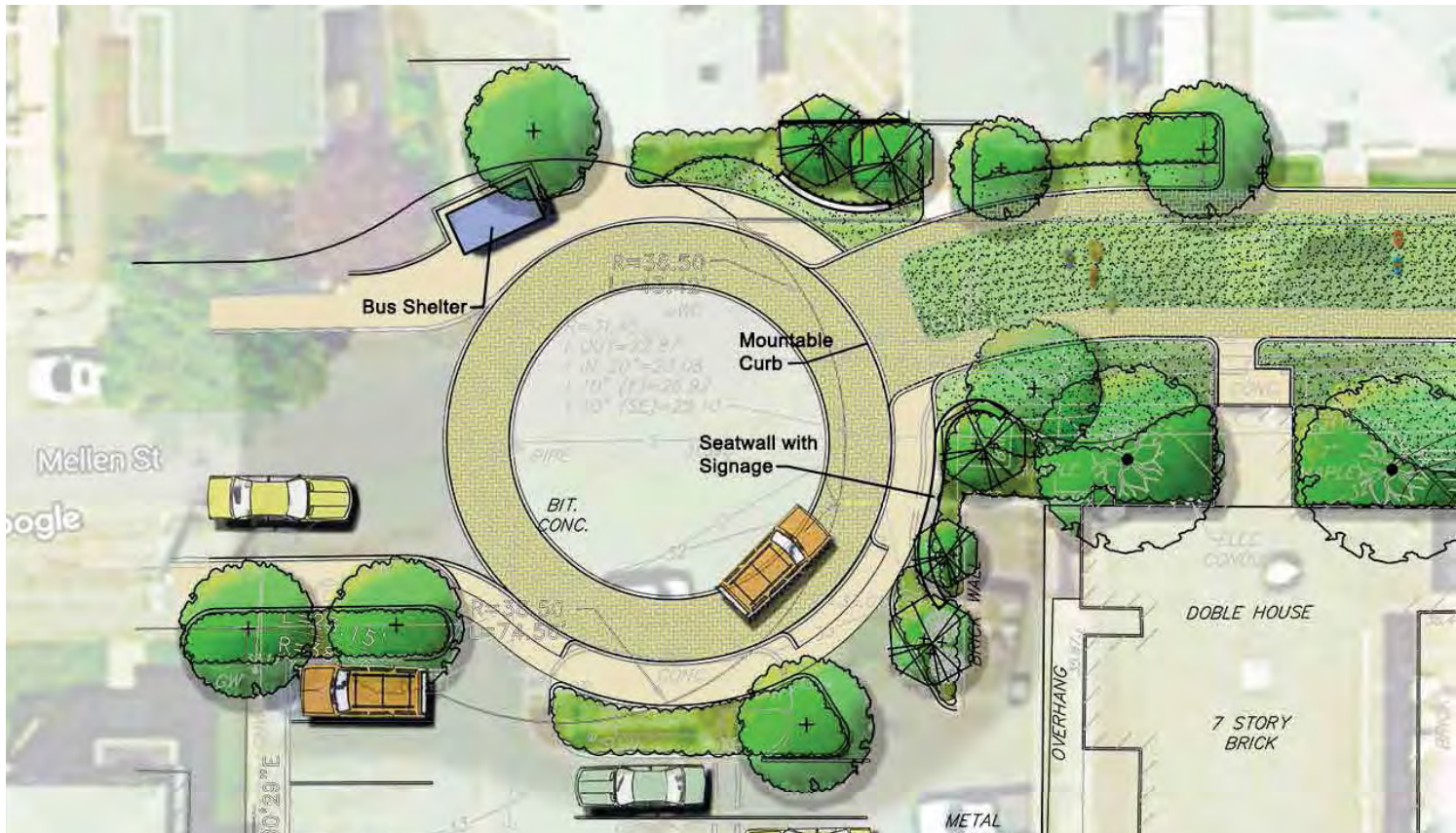


LESLEY HAS REDUCED GHG EMISSIONS BY 62% DESPITE AN INCREASE IN BUILDING AREA. NOTE: IN ACCORD WITH REPORTING REQUIREMENTS, THIS DATA IS COLLECTED BY CALENDAR YEAR INSTEAD OF FISCAL YEAR.

Waste Diversion



LESLEY HAS REDUCED OVERALL WASTE WHILE INCREASING ITS RECYCLING RATE. RECYCLING RATES ARE INDICATED AT THE TOP OF EACH FISCAL YEAR BAR.



RAISED PEDESTRIAN WAY ALONG MELLEN STREET CONNECTS THE CAMPUS WHILE STILL ALLOWING EMERGENCY VEHICLES TO ENTER VIA MOUNTABLE CURBS AT EITHER END. NEW RAMPS PROVIDE CLEAR AND CONVENIENT WHEELCHAIR ACCESS TO THE DOBLE QUAD FROM MELLEN STREET.

Precinct and Site Specific Plans

DOBLE CAMPUS

The Doble Campus includes several historic buildings and Victorian homes which have been converted for academic uses and a few mixed-use modern buildings, circa late 1960s/early 1970s, which form the edges of a quad and house students as well as provide classroom, office, recreation, and dining space.

Recently Completed

Mellen Street Pedestrian Walk

During the summer of 2016 a new campus entrance, raised pedestrian way and landscape beautification project for the section of Mellen Street from 30 Mellen Street to Oxford Street, which the University owns, was constructed. This area extends existing public space while retaining emergency vehicle access via mountable curbs at either end of the walk. New entry signs, pedestrian

furniture, bollards, additional green space and plantings, and pervious pavers and surfaces replaced impervious asphalt, chains and a do not enter sign, extending a welcoming gesture to visitors as well as students, faculty and staff. Also, it has made one of the University's central open spaces, the Doble Quad, fully accessible from Mellen Street via an integrated curvilinear ramp and stair.

In addition to these notable improvements, several more were made below the surface of the project. 19th century infrastructure (water and gas service) was replaced and additional stormwater retention was provided.

Doble Hall, 30 Mellen Street

Lesley renovated the fourth floor of Doble Hall to improve circulation and update two classrooms.

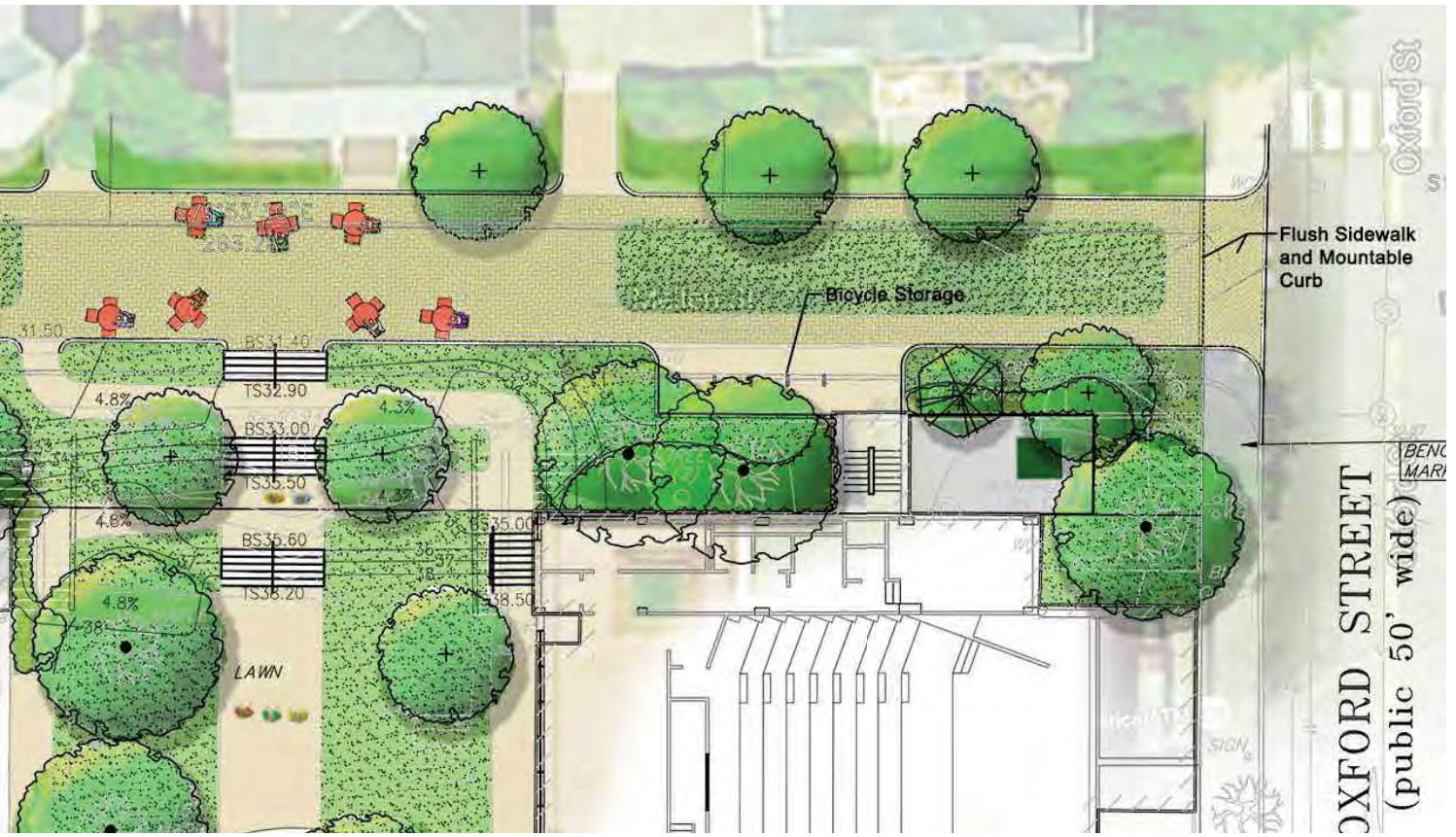


IMAGE CREDIT: PRESSLEY ASSOCIATES



VIEW OF NEW PEDESTRIAN WALK, ENTRY SIGN, VEHICLE TURNAROUND AND SHUTTLE STOP/SHELTER.



THE NEW PEDESTRIAN WAY IMPROVES STORMWATER MANAGEMENT AND ACCESSIBILITY.



Image Courtesy of Bruner/Cott, Photo by Robert Benson

GALLERY, LUNDER ARTS CENTER

East West Energy Conservation Project

The Alerton Building Management System (BMS), which controls the HVAC systems in the five story brick buildings built in 1973 located on the east and west side of the Doble Quad (Doble, Wolfard, Malloch and MacKenzie Halls), was upgraded with new software. Also, the obsolete cabling backbone and system controllers were replaced. The new software and equipment better controls the building HVAC systems, providing improved comfort level and significant energy savings. Also, as a part of the project, all Doble Campus exterior lighting was retrofitted with energy efficient LED lighting. Lesley expects to see significant energy savings in both electric and gas as a result of the work.

BRATTLE CAMPUS

The Brattle Campus includes several historic buildings in the middle of an historic district. Lesley University shares the grounds and Sherrill Library with the Episcopal Divinity School (EDS). Previous infrastructure improvements at the Brattle Campus have increased the efficiency of energy systems for buildings of both Lesley and EDS. We continue to focus efforts in this area and have committed to further renovations over the next decade to reduce deferred maintenance and keep buildings in good condition.

In Construction

Working alongside EDS, Lesley University is making important improvements to shared physical resources at the Brattle Campus.

Electrical Grid Replacement

The electrical infrastructure, both cabling and equipment, on the Brattle Campus is burdened by life expectancy and parts issues. The existing Lesley/EDS cabling is being replaced by modern Eversource cabling, improving service reliability and reducing University risk and cost in the case of a cabling failure. Likewise, electrical equipment in several buildings is approximately 50 years old and is being replaced. This work will be performed in four phases. The first phase, now underway, includes installing a transformer to supply electricity to several Lesley buildings along St. John's Road.

In Planning

Electrical Grid Replacement

This second phase of infrastructure upgrades on the Brattle Campus includes connecting EDS buildings to the existing transformer, providing separate electrical service. Phase three and four includes the installation of two additional transformers to supply electricity to remaining Lesley buildings along Phillips Place and Mason Street as well as Hastings Avenue.

Community Garden Expansion

An expanded community garden is envisioned for the landscape behind the parking lot of 101 Brattle Street. However, no date has been set for this work.

PORTER CAMPUS

The Porter Campus includes University Hall (formerly known as the Porter Exchange building) at 1815 Massachusetts Avenue, the Lunder Arts Center at 1801 Massachusetts Avenue, 815 Somerville Avenue, and the parking lots located across Massachusetts Avenue from University Hall.

Recently Completed

Porter Cafe Renovation

With the relocation of arts students from Boston to Porter Square, the University saw a need for expanded cooking capabilities at the Porter Cafe, which is a food service facility on the third floor of University Hall run by Bon Appétit as part of the University food services operation. The renovation allowed grilled and hot foods to be prepared on site.

Gallery Humidification Project

To aid in attracting high profile exhibits to the university galleries, the need to more closely control humidity in the Roberts and Raizes galleries at the Lunder Arts Center and the Vandernoot gallery at University Hall was addressed. Installation of new humidity control equipment in each gallery as well as work and storage rooms was completed in time for an exhibition of Irving Penn's work. The equipment is controlled by automated building management systems in each building.



DESIGN ILLUSTRATION SKYLIGHT

Design Illustration Skylight

Originally planned as part of the Lunder Arts Center construction project, the design illustration skylight was postponed in order to ensure students could inhabit the new building by the beginning of the 2015-2016 spring semester. With students gone for the summer, the north facing roof of the historic church was transformed finally into a space filled with natural light.

In Construction

Lesley is renovating existing retail space vacated by City Sports to house an urgent care clinic. Also, the University cleared the lower level area formerly inhabited by Bally's Fitness and installed new HVAC equipment as it searches for a replacement tenant.

In Planning

Long Term Development Sites

The two parking lots along Massachusetts Avenue across from the Lunder Arts Center and University Hall were included in discussions with neighbors and the City during planning for the Arts Center and were zoned as part of the Porter Square Overlay District to favor three-story-tall buildings with street level retail. The University intends to eventually develop these sites. The only other open sites on Lesley property are existing parking lots, including the lot behind University Hall and the parking lots and tennis court on the Doble Campus. There are no plans to develop any of these sites at this time.

Relationship with Cambridge Public Schools

In addition to providing conference/meeting space to Cambridge Public Schools for administrative meetings, Lesley enjoys a number of close relationships based upon various programmatic overlaps. Examples of collaboratively designed program descriptions based on identified needs of the preK-12 community and opportunities for preparation program faculty to work in schools/districts include:

Creativity Commons

The Creativity Commons offers a space for faculty, graduate students, and community partners to foster new programs and projects. Examples include: the Cambridge Creativity Commons, which offers programs to encourage cross-disciplinary collaboration in the Cambridge Public School District (CPSD); Sidewalk Math, an interactive art installation (Cambridge and Worcester); the School/Family Engagement Project (CPSD); and Integrative Arts Learning, where faculty in the Creative Arts and Expressive Therapies programs work with CPSD on arts-related learning.

Summer Compass Program

For more than thirty years, Lesley University and the Cambridge Public Schools have collaboratively offered a program in Cambridge that provides a six-week summer program for children in grades preK-6 that extends and reinforces children's learning during the school year. It satisfies the practicum requirement for Lesley students in the Specialist Teacher of Reading program, and half of the field

practicum requirement for those in the early childhood, elementary, moderate disabilities, and instructional technology programs. Schools can become trauma-sensitive environments.

The Center for Reading Recovery and Literacy Collaborative

This center provides training to teachers throughout the Commonwealth and United States, offering literacy courses and professional development offerings in districts across Massachusetts, the US, and internationally. Since its inception, the CRRLC has worked with over 280 literacy coaches in fifteen school districts in Massachusetts, Cambridge among them.

Field Experience

In-depth/year-long field based experiences; opportunities for exemplary educators to teach in preparation programs and collaboration in identifying and selecting candidates for programs who meet local needs include:

Field-Based Internships

For decades, Lesley University's Graduate School of Education and Graduate School of Arts and Social Sciences have had year-long field-based internships in both public and private schools across the Commonwealth. In the 2013-2014 academic year, the Division of Counseling and Psychology had 25 students in year-long internships in Cambridge and other Massachusetts public schools to meet the requirements for either school guidance or school adjustment counseling.

The Collaborative Internship Program

Partnering with four public and seven independent schools, including Cambridge Public Schools, the program offers a residency model wherein graduate students spend a year in a school while completing their degree. Graduates of the Collaborative Internship Program are highly marketable and find employment in schools regionally and nationally.

Cambridge/Lesley Professional Development Schools

This is a 21-year partnership involving Lesley University and two public elementary schools in Cambridge, focuses on creating opportunities for pre-service candidates to be engaged in all aspects of the school community.

Year-Long Internships in Schools/Districts

Qualified students can spend a full academic year as interns in Cambridge and other area public schools. Year-long interns are able to complete all of their required field experiences for the initial license while earning a stipend and gaining valuable classroom experience. Each year approximately 20-25 candidates complete these internships.

The Graduate School of Arts and Social Sciences

World-renowned leaders in the fields of counseling psychology and expressive therapies (as well as an award-winning and widely acclaimed low-residency program in creative writing) offered robust and valuable internships in a variety of Cambridge locations over the past several years. These include:

- Amigos School (15 Upton Street)
- Boston Area Rape Crisis Center (99 Bishop Allen Drive)
- Cambridge Eating Disorder Center (3 Bow St.)
- Cambridge High School Extension Program (359 Broadway)
- Cambridge Rindge and Latin (459 Broadway)
- Cambridgeport School (89 Elm Street)
- Community Legal Services and Counseling Center (1 West Street)
- Division of Children and Families (810 Memorial Drive)

- Dr. Martin Luther King Jr. Open School (850 Cambridge Street)
- Emerge (2464 Massachusetts Avenue, No. 101)
- The Guidance Center (5 Sacramento Street)
- Massachusetts Alliance of Portuguese Speakers (1046 Cambridge Street)
- North Charles Institute for Addictions (955 Massachusetts Avenue)
- Riverside Community Care at the Guidance Center (5 Sacramento Street)

Cambridge Community Foundation and Community Arts Support

Through our partnerships, sponsorships and interactions with organizations as varied as the Cambridge Community Foundation, Cambridge Community TV, Cambridge Historical Commission, Cambridge Historical Society and the Cambridge Arts Council (the Lunder Arts Center was one of the Cambridge Open Studios sites in 2015), Lesley University embraces its home in the heart of the city's cultural community.

With financial support (as with the Porter Square Neighborhood Association's publication "Shop and Eat on Mass. Ave. 2015"), to providing space for ad hoc business groups and the 2013 and 2015 City Council candidates forums, as well as free programs on domestic violence and other national and global social issues, Lesley's doors are always open to Cambridge residents.

Full Tuition Scholarships for Cambridge High School Students

Lesley awards full tuition scholarships to two students from Cambridge Rindge and Latin School (CRLS): one to a student admitted to the College

of Art and Design (LUCAD) and one to a student admitted to the College of Liberal Arts and Sciences (CLAS). Both scholarships are awarded on the basis of academic merit. Also, artistic excellence is factored into the award made to the LUCAD student.

College of Art and Design

The College of Art and Design (LUCAD) continues to have an impact on the Cambridge community since the 2015 opening of the Lunder Arts Center in Porter Square. The following list highlights some of the activities and community partnerships the school has advanced.

Art + Social Justice Film Series

Free lunchtime film screenings, artist talks and community conversations occur every first Thursday (6 programs per semester). Partners include the American Friends Service Committee, Boston LGBT Film Festival, Islamic Council of New England, #BlackLivesMatter, Lesley University Diversity Council (LUDC) and Lesley student clubs.

Open Lecture Series

Free guest curator talks, artist lectures, events, and exhibitions are routinely provided via the Lunder Arts Center. Some highlights of the previous year include:

- Teen media program exhibition and reception in partnership with the Cambridge Community Art Center
- Massachusetts Art Educators Association high school student exhibition in partnership with MAEA's annual conference
- CRLS + LUCAD Mural Project exhibition and reception in partnership with Cambridge Rindge and Latin High School
- Mehdi Ghadyanloo: Prints (2015-16) in partnership with The Rose Kennedy Greenway Conservancy
- Play Me I'm Yours, Street Pianos Boston produced by Celebrity Series Boston,

presented in partnership with Porter Square Neighbors Association, Arts on the Avenue, Cambridge Arts, and the City of Cambridge

- Emerging Talents: high school photography programs featuring local faculty and student work
- i-den-ti-ty: Art Association of New England Private Schools (AANEPS) featuring local and regional faculty and student work

Irving Penn: Beyond Beauty

This recent free exhibition not only brought world-class photography to Cambridge, but also provided expanded educational outreach to local and regional high schools and community groups:

- 17 high school gallery tours were conducted with 328 students, 24 teachers and aides, and 13 parents and staff chaperones in attendance during the months of September to November
- 50 curricular resource guides were distributed to high school educators in June
- Transportation subsidies were provided to 10 high school groups to offset fieldtrip costs
- 5 BFA and MFA photography students were trained to give interactive tours
- 6 additional community group tours were conducted, bringing 66 local senior citizens, teens, Lesley alumni, and MAEA conference participants through the galleries

These educational resources were made possible with the support of The Heart of Neiman Marcus Foundation, Cambridge Arts, City of Cambridge, and the Massachusetts Cultural Council, a state agency.

Pre-College Scholarships

Scholarships are given to high school students to take college courses as part of LUCAD's Young Artist Residency program. Local recipients include students from Cambridge Rindge and Latin High School, Somerville High School, and the Community Arts Center of Cambridge.

Community Workshops

Community workshops are routinely offered at the Lunder Arts Center. A stop motion animation workshop in partnership with the Boston International Kids Film Festival and Filmmakers Collaborative is a popular one which is offered at low cost. Currently, a digital photography workshop in partnership with the Cambridge-based Maud Morgan Arts Center is under development.

Socially Engaged Art + Design (SEAD)

Several SEAD initiatives are offered through LUCAD in partnership with Porter Square Neighbors Association, Arts on the Avenue, Cambridge Arts, the City of Cambridge, and Lesley's Office of Community Service.

- What's Your Sign? - pedestrian safety flags made by the general public in partnership with Common Boston and the Boston Society of Architects
- Paper Bag Drawings - drawings on paper bags for meal delivery to homeless people in Harvard Square
- The Meeting House - student fieldtrip and dialogue engaging with Sam Durant's public art piece as part of the Art & the Landscape Initiative and The Trustees of Reservations, Concord, MA

List of Projects

For full descriptions of the following projects, please refer to the previous section, “Precinct and Site Specific Plans.”

Completed

- Porter Cafe Renovation
- Gallery Humidification Controls
- Design Illustration Skylight
- Mellen Street Pedestrian Walk
- Doble Hall Interior Renovations
- East-West Building Conservation

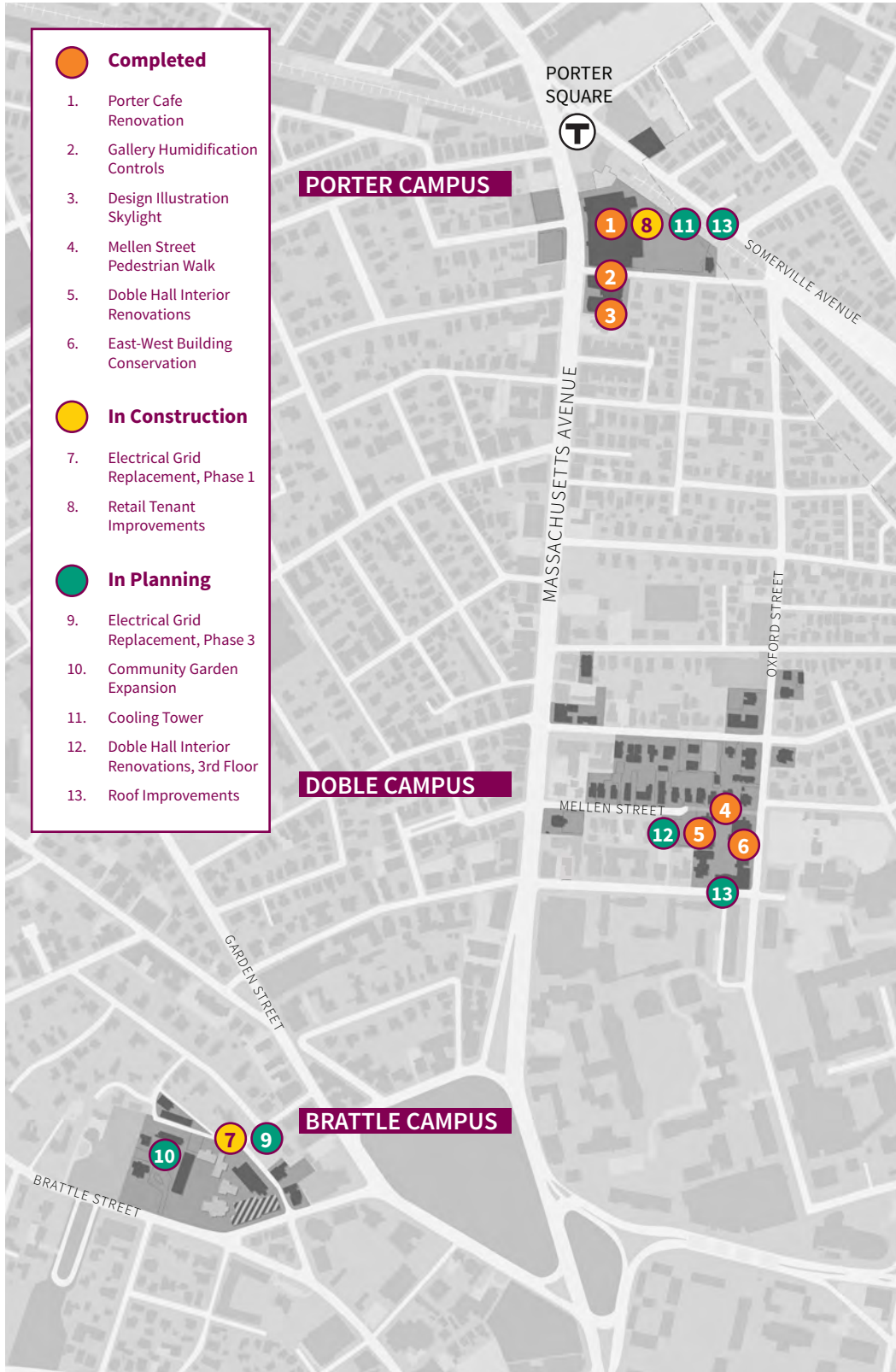
In Construction

- Brattle Electrical Grid Replacement, Phase 1
- Retail Tenant Improvements

In Planning

- Brattle Electrical Grid Replacement, Phase 3
- Community Garden Expansion
- Cooling Tower, University Hall
- Doble Hall, Third Floor Interior Renovations
- Roof Improvements, Doble and Porter Campuses

Project Map



RECENTLY COMPLETED, IN CONSTRUCTION AND IN PLANNING PROJECTS ARE ILLUSTRATED ABOVE.

Campus Maps

Map 1: Real Estate Owned and Leased

See page 5.

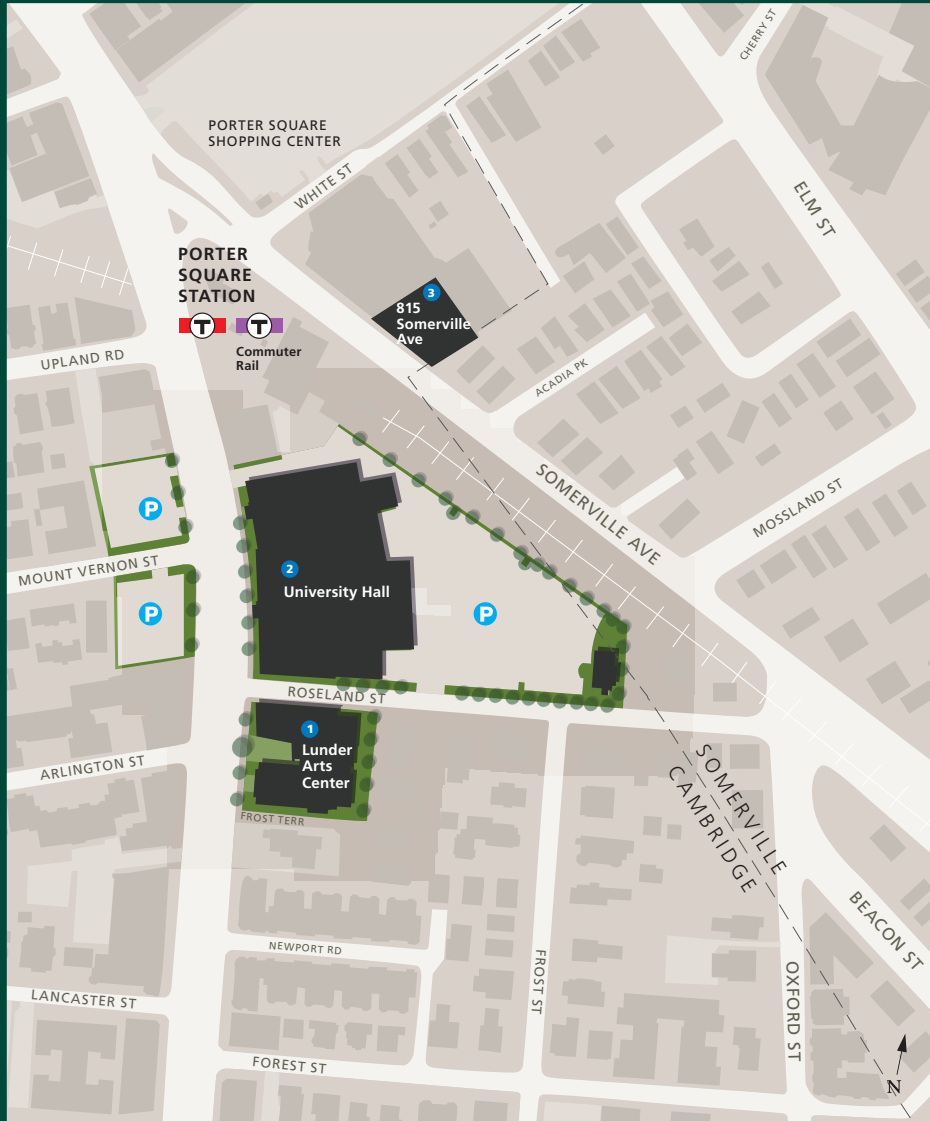
Map 2: Shuttle Routes

See page 7.

Map 3: Project Map

See page 24.

Map 4: Porter Campus



PORTER CAMPUS

- 1 1801 MASS AVE**
 Lunder Arts Center
College of Art and Design
Classrooms / Studios
Moriarty Library
- 2 1815 MASS AVE**
 University Hall
Amphitheater
Classrooms
Graduate Admissions
Graduate School of Education
Porter Caf 
Registrar
Student Administrative Services
Studios
The Shops at University Hall
- 3 815 SOMERVILLE AVE**
 Administrative Offices

KEY

- You Are Here
- MBTA Red Line
- MBTA Commuter Line
- Parking
- Pedestrian Route

Map 5: Doble Campus



DOBLE CAMPUS

- | | | | |
|--|--|--|--|
| 10 29 EVERETT ST
Office of the President
Office of the Provost | 18 23 MELLEN ST
Schwartz Hall
Enrollment Management | 26 34 MELLEN ST
Wolfard Hall
Marran Theater
Public Safety
Classrooms | 34 78 OXFORD ST
Wilbur House |
| 11 31 EVERETT ST
Stebbins Hall
Alumni Hall
Classrooms | 19 24 MELLEN ST
Mellen House | 27 35 MELLEN ST | 35 80 OXFORD ST
Maren K. Hitz '85
Alumni Center
Threshold Program |
| 12 33 EVERETT ST
White Hall
Dining Commons | 21 29 MELLEN ST
College of Liberal
Arts and Sciences | 28 36 MELLEN ST
MacKenzie Hall
Health Services
McKenna Student Center | 36 82 OXFORD ST
Threshold Program |
| 13 1627 MASS AVE
Undergraduate Admissions
Visitor's Service Center | 22 30 MELLEN ST
Doble Hall
Academic Achievement
Career Resource Center
Classrooms
Community Service
Counseling Center
Fitness Center
Information Commons | 29 37 MELLEN ST
Glennon Hall | 37 6 SACRAMENTO ST
Sacramento House |
| 14 7 MELLEN ST
Global Education Center | 23 31 MELLEN ST
Jenckes House | 30 38 MELLEN ST
Malloch Hall
Athletics
Student Activities | 38 1 WENDELL ST |
| 15 9 MELLEN ST
Office of Residential Life | 24 33 MELLEN ST | 31 61 OXFORD ST
Kirkland House | 39 3 WENDELL ST |
| 16 11 MELLEN ST
Office of Student Life &
Academic Development | 25 33½ MELLEN ST | 32 63 OXFORD ST
Wendell House | 40 14 WENDELL ST
Compass House |
| 17 13 MELLEN ST
Center for the Adult Learner | | 33 68 OXFORD ST
Kris House | 41 16-18 WENDELL ST
Wilson House |
| | | | 42 28-R WENDELL ST
Everett House |
| | | | 43 34 WENDELL ST
Buoma Hall |

Map 6: Brattle Campus



BRATTLE CAMPUS

KEY

- You Are Here
- MBTA Red Line
- Parking
- Pedestrian Route
- EDS Building
- Lesley Building
- EDS & Lesley

EDS & LESLEY

- 50** 89 BRATTLE ST
Sherrill Library
- EDS**
- 64** 4 BERKELEY ST
Deanery
- 51** 91 BRATTLE ST
St. John's Chapel
- 52** 99-1 BRATTLE ST
Wright Hall
- 53** 99-2 BRATTLE ST
Burnham Hall
- 54** 99-3 BRATTLE ST
Reed Hall
- 65** 8 ST. JOHN'S RD
- 66** 9 ST. JOHN'S RD
- 67** 10 ST. JOHN'S RD
- 68** 11 ST. JOHN'S RD
- 69** 13 ST. JOHN'S RD
- 70** 15 ST. JOHN'S RD

LESLEY

- 55** 99-4 BRATTLE ST
Lawrence Hall
- 56** 101 BRATTLE ST
Advancement Alumni
- 57** 1 HASTINGS AVE
Buildings & Grounds
- 58** 3 PHILLIPS PL
Graduate School of Arts & Social Sciences
- 59** 5 PHILLIPS PL
Graduate School of Arts & Social Sciences
- 60** 10 PHILLIPS PL
Washburn Commons
- 61** 1-7 ST. JOHN'S RD
Winthrop Hall
- 62** 2-4 ST. JOHN'S RD
Kidder House
- 63** 6 ST. JOHN'S RD
Rousmaniere House

Transportation Demand Management

Lesley University submitted its 2016 PTDM Annual Progress Report in June. This report is an update of the University's existing Transportation Demand Management (TDM) programs, the University's Cambridge parking supply, and survey results of employees and students who commute to the Cambridge campuses. The goal of the report is to provide the City of Cambridge with a current assessment of the University's parking supply and how Lesley is managing its vehicle trips through the PTDM measures and strategies offered by the University as compared to its 2005 baseline report.

Commuting Mode of Choice

Lesley University conducts a week long (Monday through Friday) Parking Transportation Demand Management (PTDM) survey every year in the month of April. This survey is distributed to all off-campus members of the Lesley community, i.e. no undergraduates who live on campus, and includes faculty, staff and commuter and graduate student respondents. The survey asks how one commuted to campus each day and excludes anyone who identified themselves as "out."

Commuting Mode

Commuting Mode	2016
Drove alone entire way	34%
Took public transportation	41%
Carpooled	7%
Bicycled	3%
Walked	13%
Other	2%

In 2016, Lesley's Cambridge combined employee and student adjusted drive alone rate was 34%, four percentage points below the University's goal of 38%.

Point of Origin for Commuter Trips to Cambridge

The number of employees and students who reside in the top ten towns represent 65 percent of the commuter population. Boston, including Allston and Brighton, represents the largest number of respondents with 20 percent followed by Somerville with 13 percent.

Top Ten Towns - Employee & Student Survey Respondents by Zip Code

Home Location	%
Boston	20%
Somerville	13%
Cambridge	11%
Medford	5%
Watertown	4%
Arlington	4%
Belmont	3%
Newton	2%
Quincy	2%
Malden	2%

Top Ten Towns - Employee Only Survey Respondents

Town	# of Employees	Drove Alone	Transit	Bike	Walk	Carpool	Other
Boston	29	34%	62%	0%	0%	0%	3%
Somerville	28	21%	14%	11%	32%	18%	4%
Cambridge	19	32%	0%	11%	53%	0%	5%
Arlington	12	58%	25%	8%	0%	8%	0%
Watertown	11	45%	45%	9%	0%	0%	0%
Medford	10	50%	20%	10%	0%	20%	0%
Belmont	8	50%	13%	0%	0%	25%	13%
Brookline	8	50%	38%	0%	0%	0%	13%
Malden	7	71%	29%	0%	0%	0%	0%
Newton	6	100%	0%	0%	0%	0%	0%

61% OF ALL EMPLOYEE RESPONDENTS LIVE IN THE ABOVE TOP TEN TOWNS

TDM Strategy Updates

There have been no changes to Lesley's TDM strategy since submitting the previous Town Gown report. When it was approved in 2005, Lesley University's PTDM Plan aimed to reduce the University's single occupancy vehicle mode split to 38 percent, which the University has met every year since, except the 2015 year due to inordinate snowfall and corresponding MBTA malfunctions and the relocation of the Arts College to Cambridge. The previous PTDM survey was completed within 60 days of the Lunder Center opening. A re-education process was conducted and the results of the 2016 PTDM survey show a significant decrease in single occupancy vehicle travel (9% over the previous year).

Bicycle Facilities

Lesley University provides several bicycle amenities to its community, ranging from 358 existing bicycle racks to a do-it-yourself bicycle repair stand on its centrally located Doble Campus. Also, Public Safety is equipped with bicycle pumps at each campus. The Lesley University Department of Public Safety encourages anyone who intends to use a bicycle on campus to register it.

The University continues to add bicycle racks throughout its three campuses. As part of the 2015 Lunder Arts Center project, the University provided a Hubway stop on our Porter Campus, connecting with the network of bicycle stops throughout the Cambridge and Boston area and promoting increased bicycle opportunities for students, faculty and staff as well as the larger Cambridge community.

Lastly, Lesley University strongly supports the use of alternative transportation. The University takes part in the Green Streets Initiative and offers incentives to faculty and other employees to commute to campus via alternative modes, such as bicycling.

Antenna Installations

Existing Conditions

The University currently has rooftop wireless telecommunications equipment installed at University Hall, 1815 Massachusetts Avenue, and another site approved for an AT&T wireless antenna, 30 Mellen Street. The two wireless network providers on the rooftop tower at University Hall are AT&T (resident since 1996) and Sprint (resident since 2001). MetroPCS left the rooftop in 2014 and their antenna equipment that was located on the bottom level of the building tower was removed and the facade repaired. We have completed a new lease agreement with Verizon to install their wireless equipment on the University Hall rooftop. The agreement is currently being reviewed by Verizon for signature. Verizon would install their antenna equipment on the lower third of the tower where MetroPCS had their equipment. The 30 Mellen Street antenna project is being considered for summer 2017 or summer 2018.

There are two other antennas on the “top” of the tower, a small microwave dish that is a Lesley data connection and an antenna that is part of the City of Cambridge fire and police department telecommunications equipment.

Lesley also has small microwave antennas for the exclusive use of the University located at 1 Wendell, 14 Wendell, 6 Sacramento, 30 Mellen and 78 Oxford, which are positioned such that they are not readily visible to the neighborhood.

Visual Impact Mitigation

The City has a rigorous review process that addresses the aesthetics of any new wireless service provider antenna sites or for any upgrades or changes in existing rooftop equipment. Anytime a change is contemplated with one of our wireless service providers, we actively review the plan drawings, photos and Photoshop renderings of the proposed installations before they are submitted to the Board of Zoning Appeal

for review and approval. We are very conscious of the appearance of antennas on our buildings and keeping them as inconspicuous as possible while still allowing them to operate as they are intended.

Regarding the University Hall tower, the current AT&T and Sprint wireless antennas are located in the red tile reveals on each side of the tower and are painted the same color as the red tile. The new Verizon antennas would be installed in a similar manner. No antennas are allowed on the yellow brick surface of the building or tower.

We will continue to participate in the existing City review process in an effort to keep the visual impact of any antennas acceptable.

Institution Specific Information Request

1. To develop a more complete picture of the institution, provide a listing of Lesley's education sites located outside of Cambridge.

An important part of Lesley's work is its collaboration and partnerships with schools and districts throughout Massachusetts. They inform our teaching and learning, and provide opportunities for growth, as well as for placements for our practicum students. Lesley has written a report responding to the Massachusetts Department of Elementary and Secondary Education (DESE) Standard 703 (b): "Collaborate with school districts to ensure positive impact in meeting the needs of the districts." The following is an overview of our partnerships and collaborations during 2013-2015. Read the full Lesley University MA School and District Partnerships Report for details: <http://www.lesley.edu/WorkArea/DownloadAsset.aspx?id=21187>.

Outside Cambridge

Lesley University has direct partnerships with 60 Massachusetts school districts (Acton-Boxborough, Agawam, Arlington, Assabet-Valley Regional High School, Avon, Bellingham, Billerica, Boston, Brockton, Brookline, Cambridge, Carlisle, Central Berkshire, Concord, Concord-Carlisle Regional, Dennis-Yarmouth Regional, Easthampton, East Windsor, Everett, Framingham, Frontier Regional, Haverhill, Hilltop

Cooperative Charter, Lawrence, Lexington, Lowell, Ludlow, Malden, Medford, Needham, Newburyport, Newton, Oak Bluffs, Old Rochester, Peabody, Pioneer Valley, Plymouth, Reading, Salem, Sandwich, Scituate, Somerville, South Hadley, Southwick, Springfield, Triton, Wakefield, Waltham, Watertown, Webster, Wellesley, Westford, Westhampton, Weston, West Springfield, Westwood, Weymouth, Wilmington, Winchester and Worcester). Our Early Field Experience, field-based work within courses, practica, and internship placements extend far beyond these.

Teaching Sites

Site Name	Address	City	State	Zip
Amesbury High School	5 Highland Street	Amesbury	MA	01913
Beaufort High School	84 Sea Island Pkwy	Beaufort	SC	29902
Boston Higashi School	800 North Main Street	Randolph	MA	02368
Bunker Hill Community College	205 Rutherford Avenue	Charlestown	MA	02129
Cape Cod Community College	2240 Lyannough Road	West Barnstable	MA	02668
Centennial Elementary School	255 South Cleveland Avenue	Loveland	CO	80537
David P. Meaney Education Center	10474 Mather Boulevard	Mather	CA	95655
Federal Hill Preparatory School	1040 William Street	Baltimore	MD	21230
Galvin Middle School	525 Main Street	Wakefield	MA	01880
Great Falls High School	1900 2nd Avenue South	Great Falls	MT	59405
Hazelwood Elementary	11815 SE 304th Street	Auburn	WA	98092
The Hill Center	921 Pennsylvania Avenue SE	Washington	DC	20003
Lakewood High School	9700 W. 8th Ave	Lakewood	CO	80215
League School of Greater Boston	300 Boston-Providence Tpk	Walpole	MA	02032
Mansfield High School	250 East Street	Mansfield	MA	02048
Murrieta Elementary School	24725 Adams Ave	Murrieta	CA	92562
Plymouth North High School	41 Obery Street	Plymouth	MA	02360
Randolph Community Middle School	225 High Street	Randolph	MA	02368
Roots and Branches School	1807 Harlem Avenue	Baltimore	MD	21217
Shrewsbury High School	64 Holden Street	Shrewsbury	MA	01545
South Shore Charter School	100 Longwater Circle	Norwell	MA	02061
Sweetland Center	4 Church Street	Hope	ME	04847
Tucumcari Elementary School	1100 S. 7th Street	Tucumcari	NM	88401
Twin Spruce Junior High	100 E. 7th Street	Gillette	WY	82716
Walnut Hill Seminar House	81 Chester Road	Raymond	NH	03077
William H. Taft Elementary School	3722 Anderson Street	Boise	ID	83703
Wood Hill Middle School	11 Cross Street	Andover	MA	01810
Woodville Elementary School	30 Farm Street	Wakefield	MA	01880

Partnership Sites

Wakefield Public Schools

The Graduate School of Education's partnership with the Wakefield Public schools includes working closely with the district to provide local professional development, positioning

Wakefield as a regional site for programs of study, developing internship opportunities for initial licensure candidates, and developing practicum placement sites.

Somerville Public Schools

Somerville and GSOE recently were awarded a DESE Gates partnership grant to extend our partnership work with the district as a whole. There are three main goals: respond to their specific teacher pipeline needs; prototype data sharing to assess effectiveness of Lesley candidates and graduates; extend innovative programs already in place such as our in-service-pre-service courses and collaborative early childhood center.

Regarding innovation, during the 2015-16 school year, Lesley launched a Makerspace at Somerville's the Kennedy School, helping to open an innovation lab for elementary-school students to explore science, technology, engineering, art and math concepts through programming, robotics and more.

League School of Greater Boston

This partnership provides an opportunity to work in partnership with local districts to bring increased knowledge about autism to schools. Lesley University in partnership with League School of Greater Boston, offers, on the School's campus, a graduate autism specialization program.

The Center for Mathematics Achievement (CMA)

CMA has received Massachusetts Mathematics and Science Partnerships (MMSP) with the Springfield and Easthampton Public Schools. The director is also providing coaching and District Developed Measures in Easthampton. The CMA also received a second MMSP grant to provide mathematics and science content courses in the Brockton and Weymouth Public Schools. During some of the courses in-service teachers will spend a day at the Boston Science Museum, which has also partnered with the CMA for this grant.

The Center for Special Education

In partnership with the Massachusetts Advocates for Children, the Oak Foundation, and Harvard Law School, Lesley has developed a training program that supports school personnel to become knowledgeable about childhood trauma and its effect on learning, and has given training in Arlington, Boston, Brockton, Lexington, Foxboro, Nauset, Newburyport, Plymouth, Reading, Salem, Webster and Worcester. They have developed a four-course sequence designed for school-based professionals to understand how trauma manifests in schools and how schools can become trauma-sensitive environments.

Perkins School for the Blind

Partnership with Perkins to offer a Transition Specialist Endorsement program on site in Watertown, MA, for internal staff as well as others. Graduate students who participate have the opportunity to participate in field experiences at the site in partial fulfillment of program requirements.

LABBB Collaborative

Partnership with the LABBB (Lexington-Arlington-Burlington-Bedford-Belmont) Collaborative to offer the Graduate Certificate in Teaching Students with Autism on site at the LABBB offices in Bedford, MA, providing an opportunity for students to work with local districts to bring increased knowledge and awareness of autism to schools.

Community College Partnerships

This summer, Lesley University celebrated the graduation of its first five graduates who earned bachelor's degrees via the university's four-year-degree-completion partnership with Bunker Hill Community College. Those who hold an associate's degree from the Charlestown-based school, and meet the criteria, possess half the credits needed to complete a bachelor's degree in business administration, psychology or early childhood studies. In addition, the Lesley courses are offered on the Bunker Hill campus, Friday evenings and Saturday mornings, at a significantly reduced tuition rate.

Urban Scholars Initiative

In 2016, Lesley University celebrated the graduation of Natalia Rosa, the first student in the university's Urban Scholars Initiative. Lesley created the Urban Scholars Initiative program to help talented and dedicated students fulfill their dream of completing a college degree. Lesley's Urban Scholars Initiative works with 16 community partners to find eligible, college-ready students. This is not an alternative-admissions program; rather, it makes the opportunity of a four-year university education attainable for talented students who otherwise could not afford higher education.

The community partners include: Artists for Humanity, Boston; Boston Red Sox Scholars Foundation, Boston; Bottom Line, Dorchester; Breakthrough Greater Boston, Cambridge; Crossroads, Boston; Graduate Support Program (Nativity Preparatory School), Jamaica Plain; Higher Education Resource Center, Boston; KIPP Through College, New York; La Vida Scholars, Lynn; Let's Get Ready, Boston; RAW Artworks, Lynn; Scholar Athletes, Boston; Steps to Success, Brookline High School; Summer Search, Jamaica Plain; The Steppingstone Foundation, Boston; Trinity Education for Excellence Program, Boston.

2. Discuss planning for shuttle bus services between campuses.

Please see the following section above for discussion related to shuttle bus service: "Institutional Shuttle Information," pages 6-8.

3. Describe plans for properties currently held by the University on or abutting Massachusetts Avenue. Particular attention should be paid to a description of the uses intended on the ground floor of these sites, as related to community concerns about maintaining an active retail environment. Also address plans for the parking lots across Massachusetts Avenue from University Hall. Are there any plans to screen or beautify these lots?

The University understands and agrees with the community priority of active streetscapes and street level retail along the Massachusetts Avenue corridor. 1 Wendell and University Hall reflect that commitment with active retail on the ground level. The design of the Lunder Arts Center also reflects our commitment to this ideal. The ground level will be activated by a combination of indoor and outdoor attractions, including a new plaza and public access to art galleries and a library. Also, as part of the Porter Square Overlay District, the two parking lots across Massachusetts Avenue will be developed eventually as three-story-tall buildings with street-level retail. We have a regular maintenance effort to keep the lots in good condition but do not plan to screen the parking lots.



Campus Planning and Operations
Lesley University