



Lesley
UNIVERSITY

2022

Town Gown Report

Planning Board February 7, 2023

Periissem ni perstissem

I would have perished had I not persisted



Town Gown 2022

- Context & Campus Overview
- Recent Projects
- Transportation
- Sustainability
- Strategic Framework
- Equity, Diversity, Inclusion & Justice
- Community Engagement



Change for the better

- Building on mission of educating and diversifying ranks of teachers, social workers, mental health and wellness professionals, and artists in the world.
- Reopened campus to students, faculty, staff and the public
- Opened first-of-its kind mental health center
- Expanded existing partnerships and launched new ones
- Multi-year plan for right-sizing and reinvestment to enhance student life and make buildings and facilities accessible to all



About Lesley – Who We Are

- Leaders in educating teachers, artists and healers, including mental health, wellness, expressive therapists, and social workers.
- Our creative and caring graduates nurture people to live their best lives, challenge inequity, heal communities, and promote human connections.
- 90,000 strong alumni network.
- 4 schools & colleges:
 - Professionally focused College of Liberal Arts and Sciences
 - College of Art and Design (LA+D)
 - Graduate School of Education
 - Graduate School of Arts and Social Sciences
- Threshold Program: a residential program for students with learning differences

Campus Overview

Lesley Profile – 2022

Students

| | |
|----------------|-------|
| Undergraduate | 1,518 |
| Graduate | 1,899 |
| Non-degree | 1,073 |
| Dormitory Beds | 864 |

Faculty & Staff

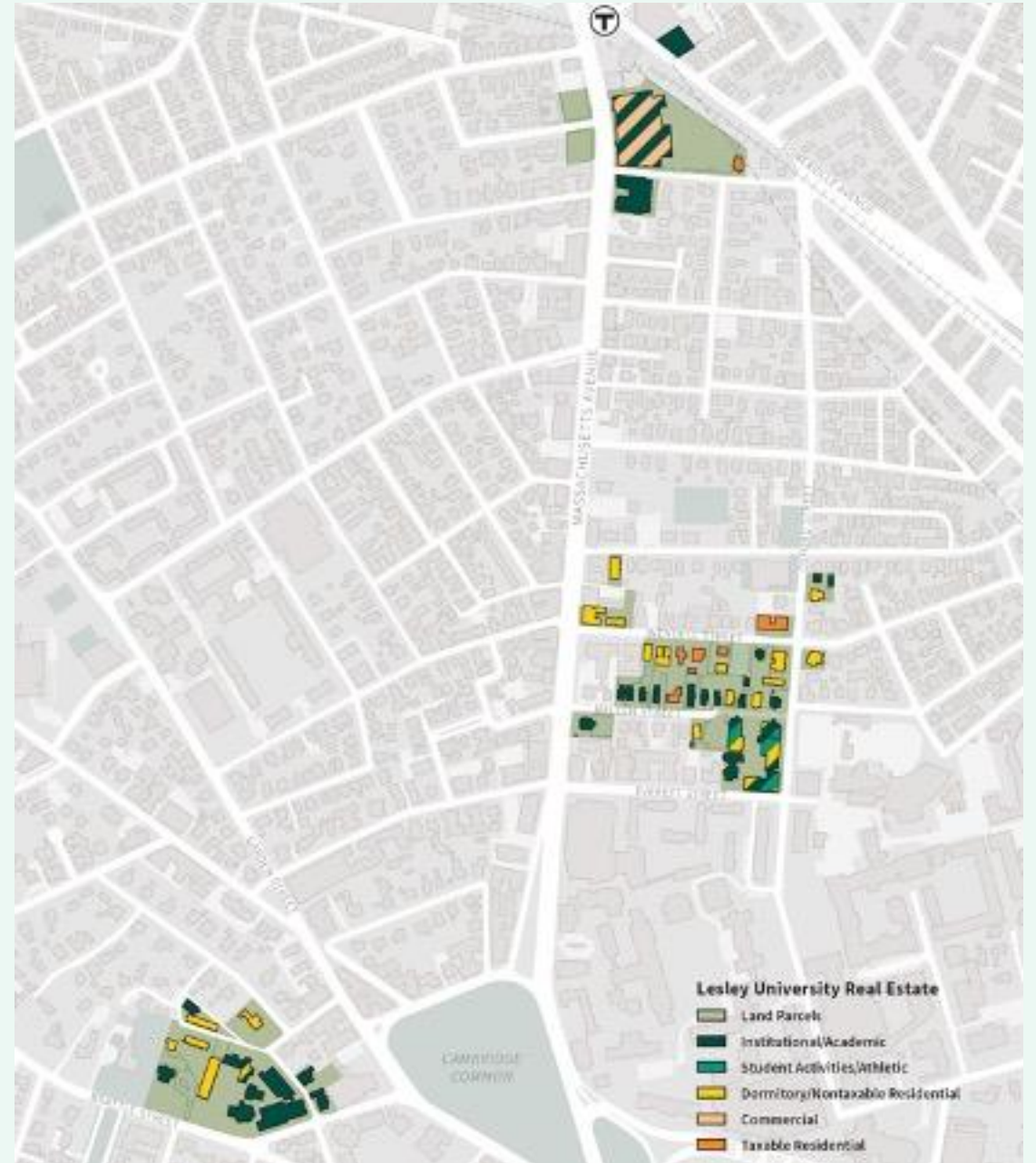
| | |
|---------|-----|
| Faculty | 170 |
| Staff | 288 |



Campus Overview

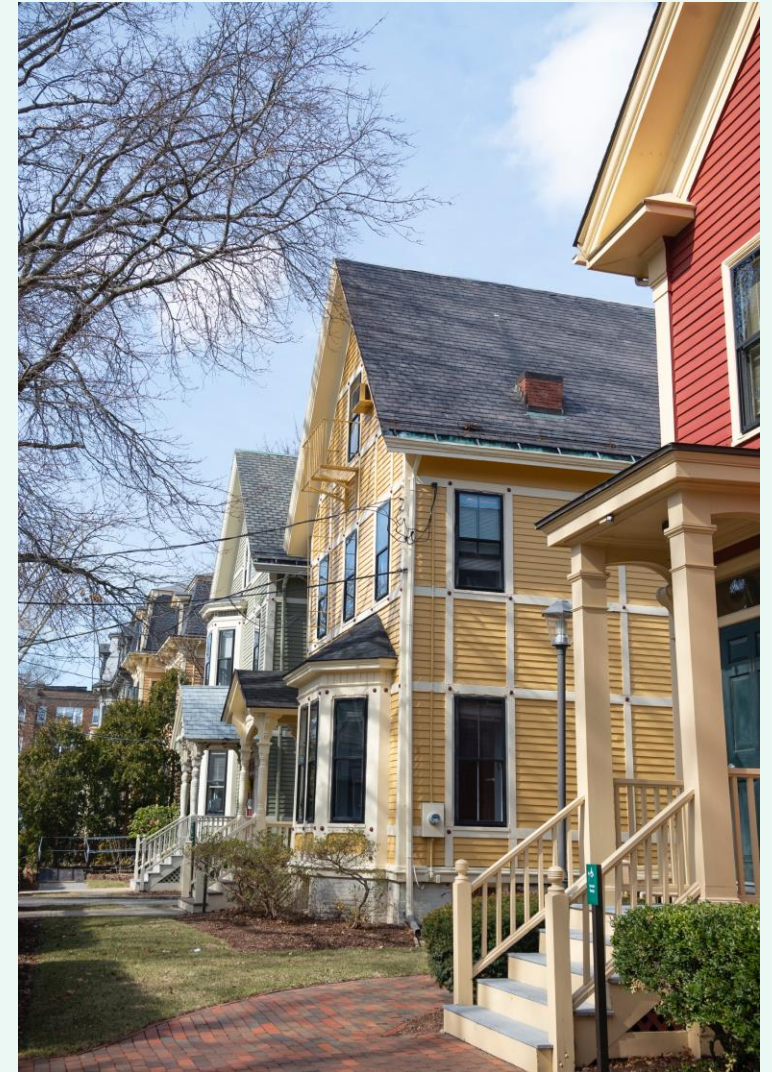
Lesley Profile – 2022

- 51 buildings on 3 campuses
- 14.39 acres
- 914,474 GSF total space
 - 78,209 GSF = Commercial
 - 54,972 GSF = Taxable Residential
- 22 off-site locations
 - 18 within MA
 - 4 outside MA



Cambridge properties sold

- 1627 Massachusetts Ave. (affordable housing)
- 7 Mellen Street (housing)
- 9 Mellen Street (housing)
- 11 Mellen Street (housing)
- 13 Mellen Street (housing)
- 17 Mellen Street (housing)
- 19 Mellen Street (housing)
- 21 Mellen Street (housing)
- 815 Somerville Ave. (increase lab space and industrial footprint)



Campus Projects

Completed in 2022

- Ava's Kitchen (McKenna Student Center)
- Riverside Outpatient Care Center (Schwartz)
- Kitchen & Commuter Pantry (White Hall)
- HyFlex Classrooms & Furniture
- Phase 1a Landscaping & Recreational (South Campus)



Campus Projects

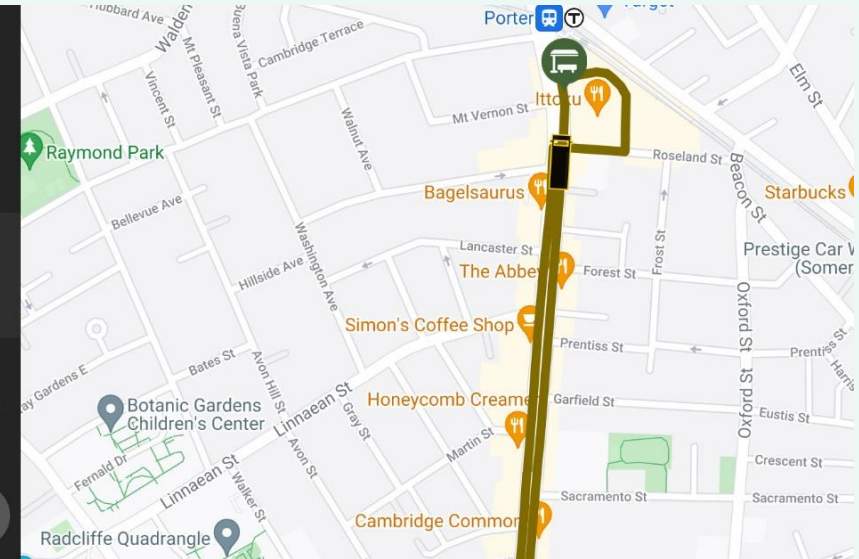
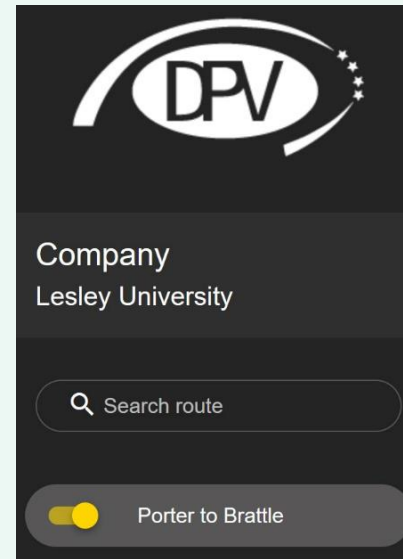
Scheduled and under way

- Kidder Hall Upgrades
- Rousmaniere Hall Upgrades
- Lawrence Hall Upgrades
- Reed Hall (CHC approved)
- Burnham Hall (CHC approved)
- St. John's Chapel (CHC approved)
- Landscaping (CHC approval pending)



Transportation

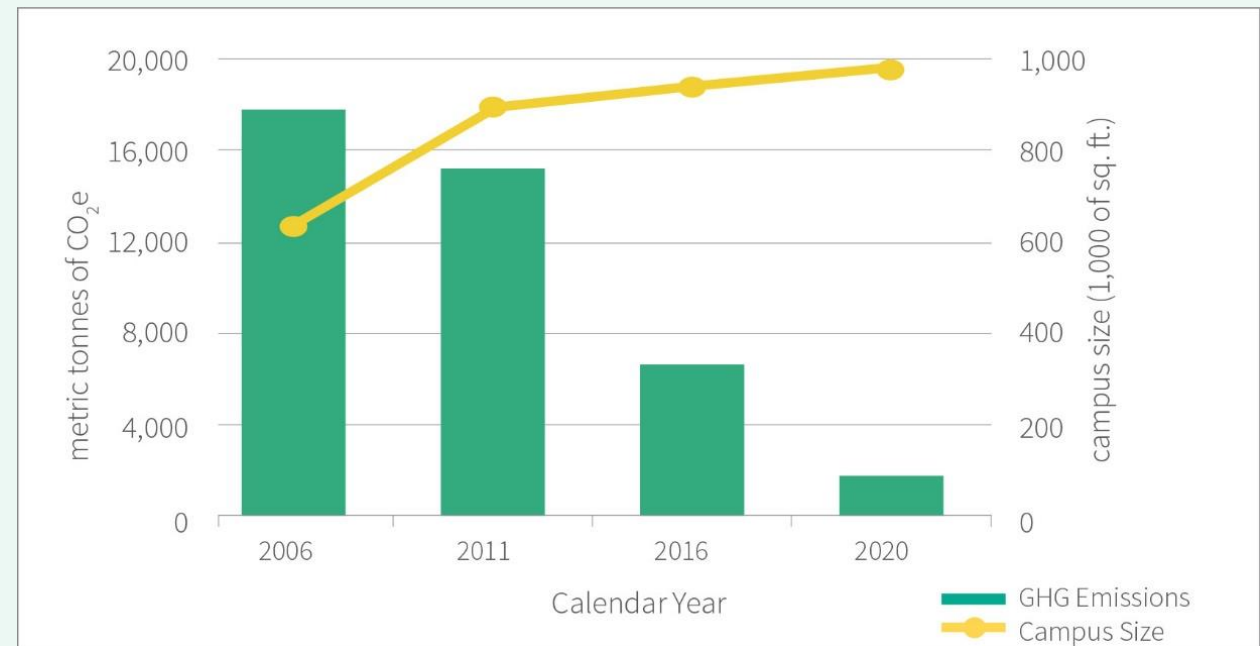
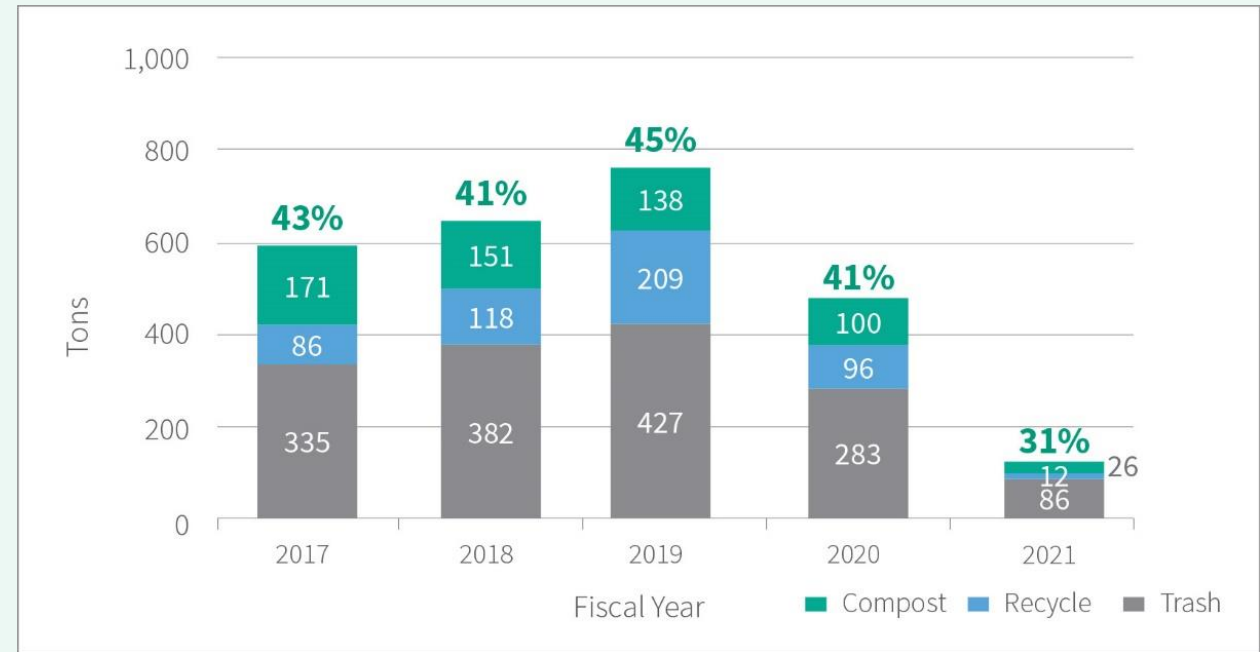
- Last PTDM Nov. & Dec. 2022
- Shuttle buses run between each campus at 10-min. intervals
- Upgraded shuttle capacity
 - Replaced 15-passenger vans with three 32-passenger buses
 - Pursuing electric conversion
- Real-time tracking via app
- 358 bicycle racks, repair stand & sponsored Blue Bikes station at Porter



Sustainability

Diversion & GHG Metrics

- Developing partnerships with key providers & engaging students.
- Increased waste diversion annually through 2019. (Pandemic closing resulted in 74% drop in waste in 2021). Goal is to reach 50% diversion.
- Reduced GHG emissions by 90% despite 34% increase in campus square footage since 2006.



Sustainability

Fossil Fuel Divestment

- Divested from direct holdings in fossil fuels in 2015
- Now divesting from remaining indirect fossil fuel investments
- Prioritizing operational sustainability in campus plan renovations



Connecting to Our Future

Transforming physical space to enhance Lesley University student learning and experience

Three Campuses
ONE VISION

University Vision & Strategic Growth

- Create affordable pathways to critical professions, such as education and mental health, through strategic partnerships.
- Support our graduates over the arc of their careers.
- Attract diverse learners to the caring and creative professions.
- Broaden access to a Lesley degrees and certifications
- Raise visibility & reach of our programs
- Invest in state-of-the-art facilities and grounds.



Partnerships Development

Doble is the Learning by Doing Campus

- Lab school
- Virtual production
- Counseling/Wellness
- Athletics



Riverside Outpatient Center at Cambridge

A historic partnership

- Housed in 23 Mellen St.
- Officially launched Nov. 18
- Professional therapeutic setting
- Suicide prevention training
- Student field placement / training opportunities



Professional licensure partnerships

Increasing opportunity while diversifying the teaching field

- Paraprofessionals earn master's of education
- Second cohort from Cambridge Rindge & Latin
- Launched in Framingham Public Schools
- Discounted tuition
- Increased access to teaching field for people of color



Athletic facilities at Minuteman High School

A new era for Lesley University 'home games'

- Soccer
- Softball and baseball
- Basketball
- Volleyball
- Lynx 'home games' at Minuteman High School in Lexington, with no impact on Cambridge neighbors



Strategic Framework Goals

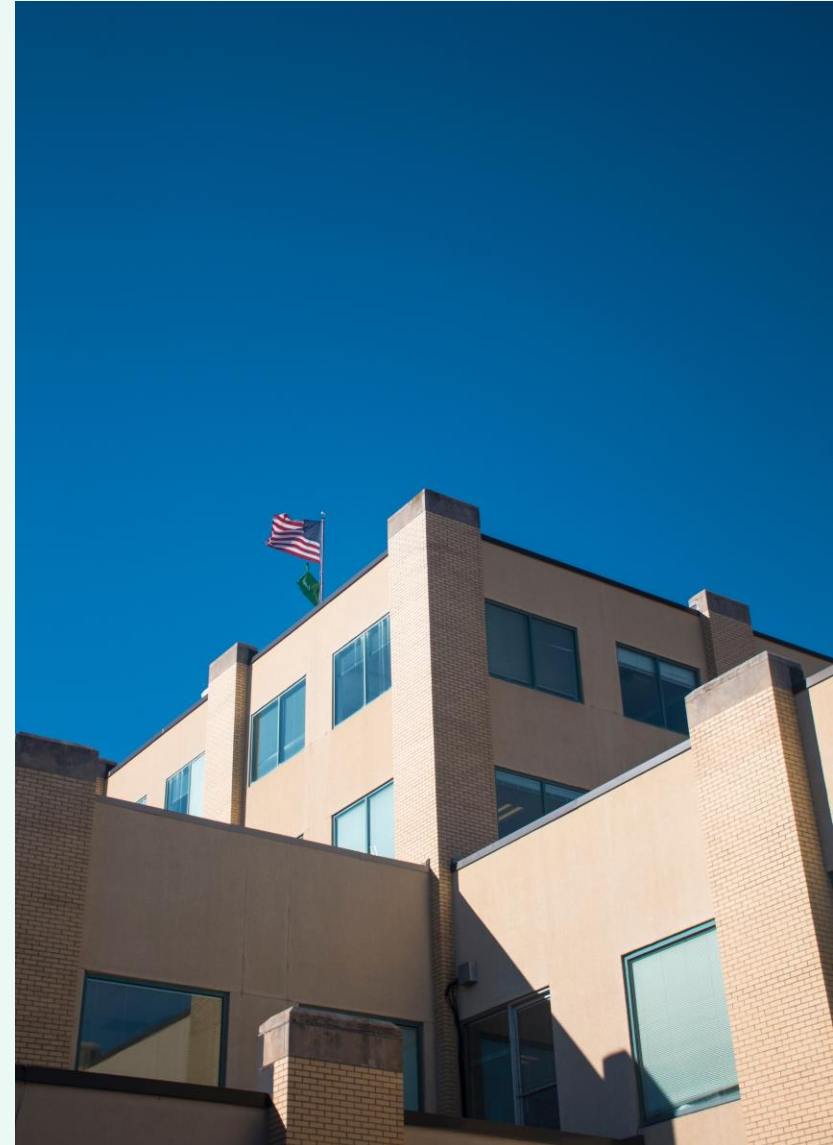
Create Learning Environment that:

- Supports our unique educational vision
- Revitalizes historic buildings & grounds
- Improves sustainability & accessibility
- Strengthens community connections



Strategic Framework Approach

- Invest significantly in capital improvements over the next 3-5 years
- ‘Right-size’ and improve facilities to align and connect all three campuses to meet student and community needs
- Redesign footprint to yield more useable space for Lesley



A *Connected* Campus to foster human connections



South

- Connecting with Each Other
- Welcoming
- Academic Grounding



Doble

- Connecting with Partners
- Learning by Doing
- Career Labs



Porter

- Connecting with the Community
- Academic Intensity
- Close Collaboration

South Campus

Initial Projects

1. Identity & Wayfinding:
Clarify & Augment
2. Quad & Landscape:
Restore & Invigorate
3. Reed and Burnham Halls:
Renovate & Update
4. St. John's Chapel:
Repurpose as a Performance Venue
5. Existing Residence Halls:
Renovate & Update
6. Sherrill Hall:
Phase 2 Renovations



Doble Campus Initial Projects

1. Landscape:
Augment & Invigorate
2. Identity & Wayfinding:
Clarify & Augment

SOLD:
The buildings in orange.

Landmark study underway at 1627
Mass Ave.



Landmark Study

1627 Mass Ave

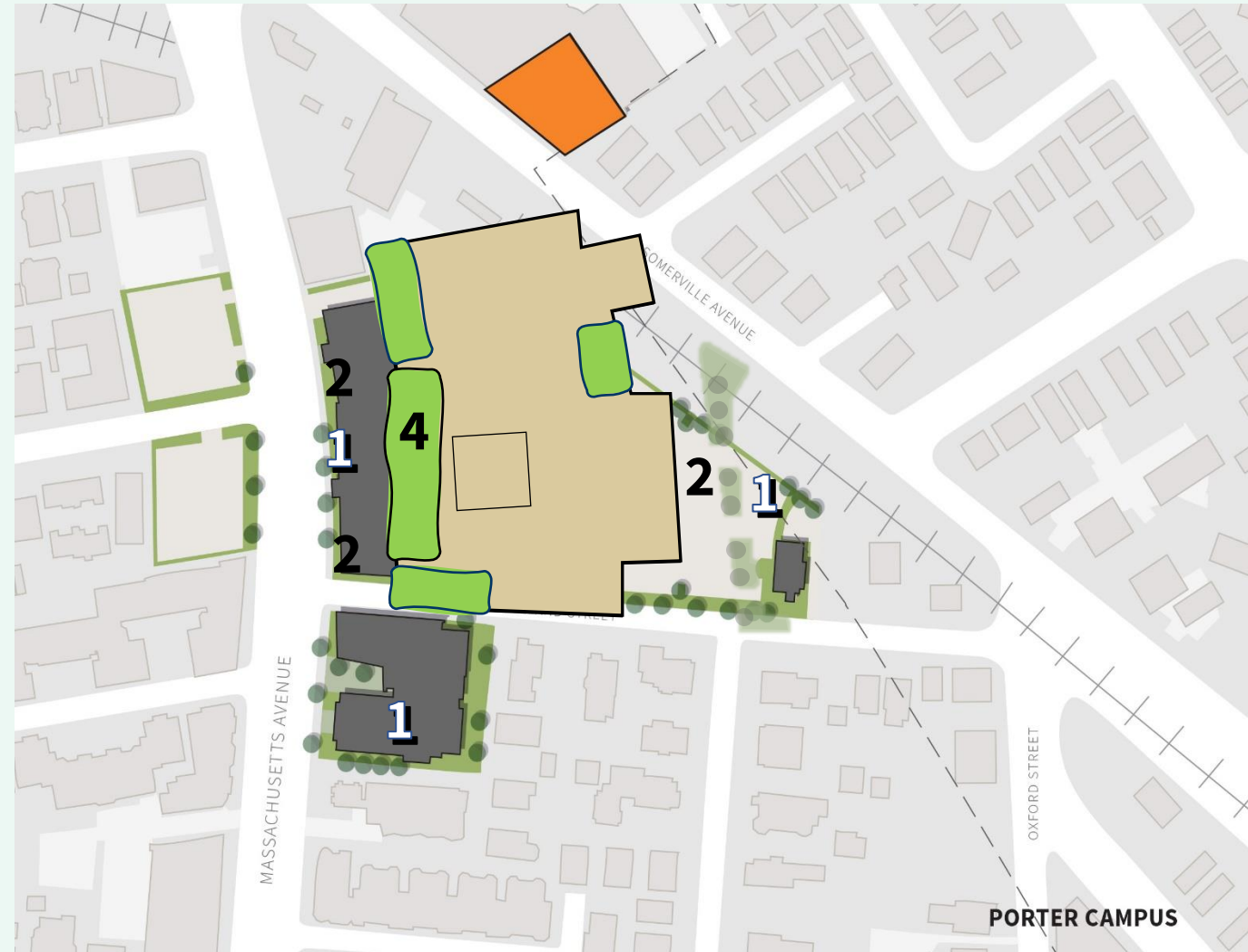
Porter Campus

Initial Projects

1. Landscape, including at Lunder Center:
Augment & Invigorate
2. Identity & Wayfinding:
Clarify & Augment
3. University Hall Interior Renovations –
phased:
Common Spaces, Welcome Center
4. University Hall Rooftop Renovations:
Remove Track, Create Seating, Gardens

SOLD:
**The building in orange (815 Somerville Ave.
offices)**

Future Development:
New Co-Living Housing Spaces



Lunder Arts Center Plaza

A re-imagined plaza with large canopy trees, distinctive site furnishings, and catenary/festive lighting to create a more memorable and animated space at Lunder's outdoor courtyard



PROPOSED ACTION: Mass Ave at University Hall

Mass Avenue at University Hall

A re-imagined streetscape with new seating areas, seasonal planters & planting areas, large street trees, and hints of an expanded public realm on the roof



University Wide Initial Projects

- Connective fabric
 - Indoor and outdoor art
 - Landscaping
 - Wayfinding
- "Art Everywhere"
 - Buses
 - Banners
 - Alumni artwork



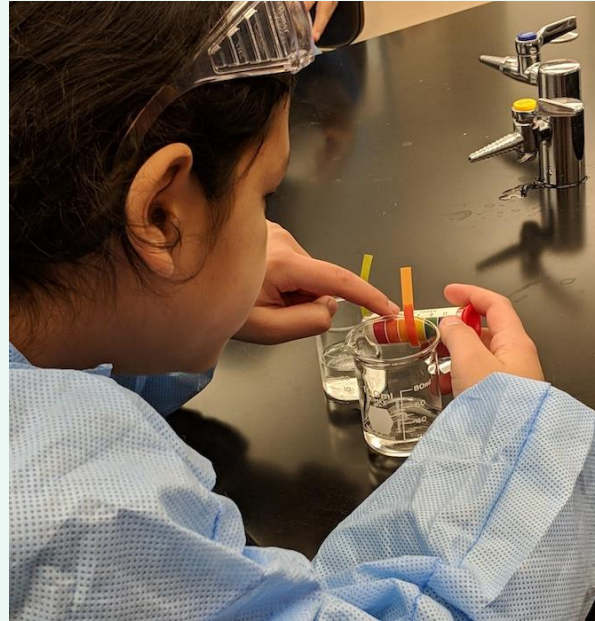
Equity, Diversity, Inclusion & Justice

- Investing in personnel
 - Hired new VP of EDIJ
 - Expanded Title IX office
- Urban Scholars Initiative
 - Partner with 20 feeder organizations in Cambridge & Greater Boston area
 - Addressing education gap & empowering disadvantaged students and students of color
 - Holistic coaching



Community Engagement

- STEAM and approx. 50 LA+D partnerships
- Early College Partnership w/CRLS
- Paraprofessional Master's Degree Partnership w/CPSD
- Loop Lab and workforce development



Thank you.



Image Courtesy of Bruner/Cott,
Photo by Robert Benson

Lesley
UNIVERSITY

2022

Town Gown Report

Planning Board February 7, 2023