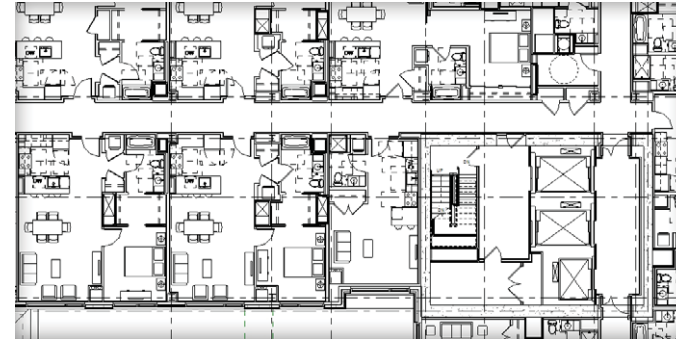


# CJUF III Northpoint LLC



## NorthPoint Parcel N Apartment Tower

City of Cambridge Design Review Submittal  
Supplemental Package

NorthPoint, Cambridge, MA  
10.09.2012

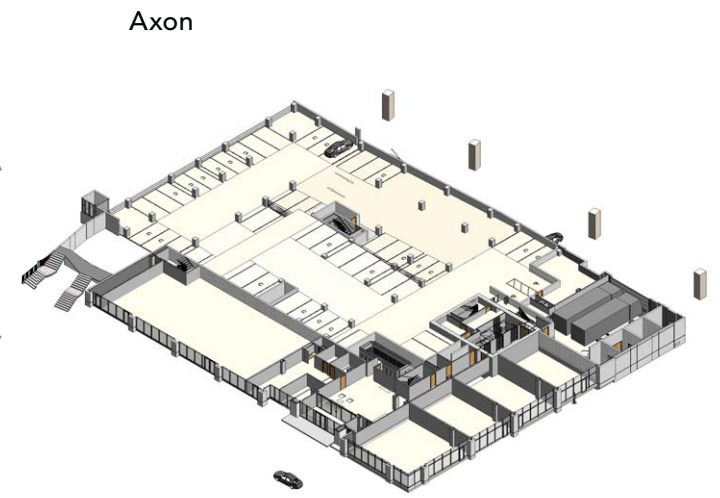
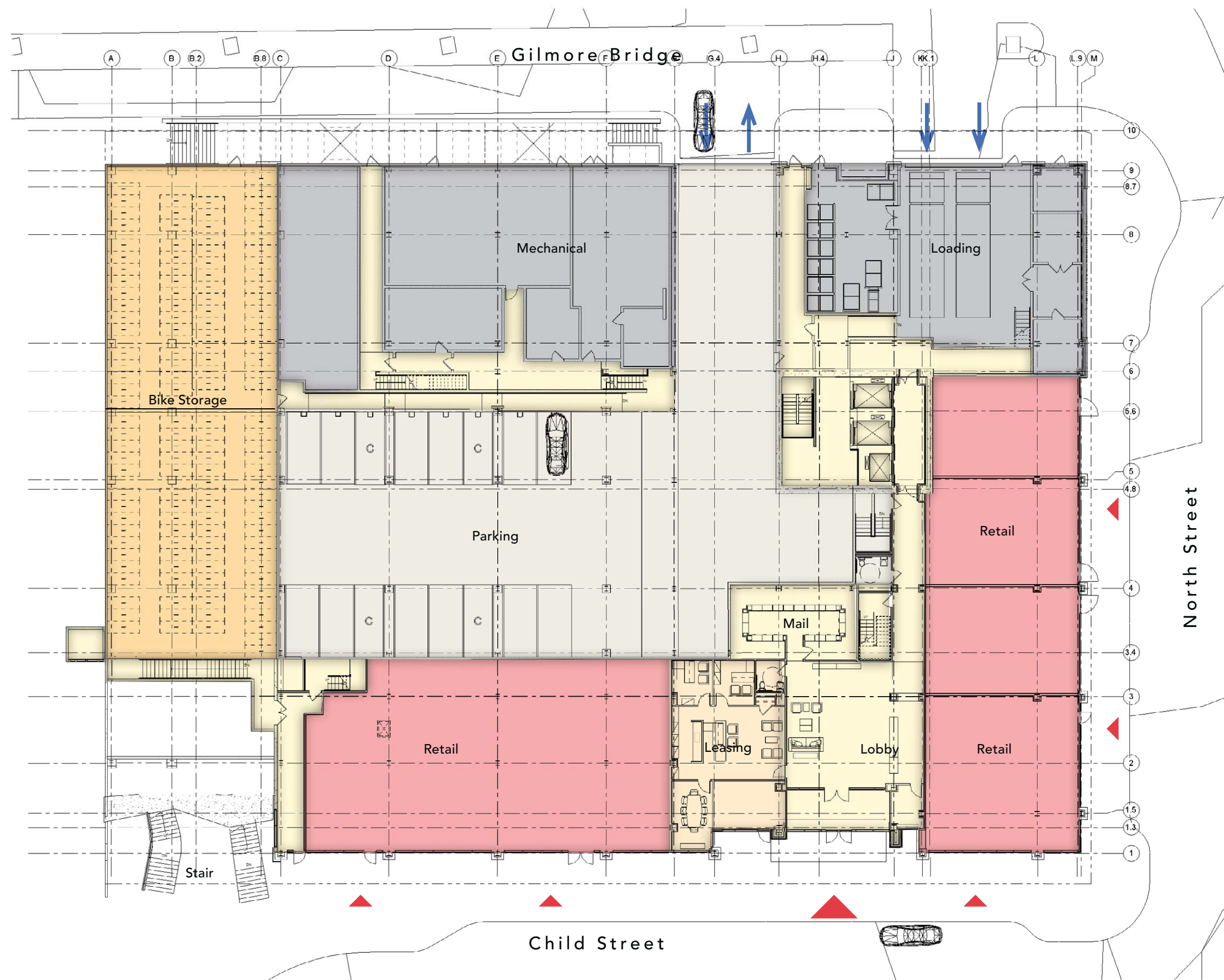


landworks>studio



## Table of Contents

Apartment Tower Design - Updated Plans	3
Landscape Design	
Site Plan	5
Public Green / Ellipse Park	7
NorthPoint Stair	11
Gilmore Bridge	17
Civil Exhibits	
Metes and Bounds Plan	18
Site Plan	19
Utility Plans	21



**Key**

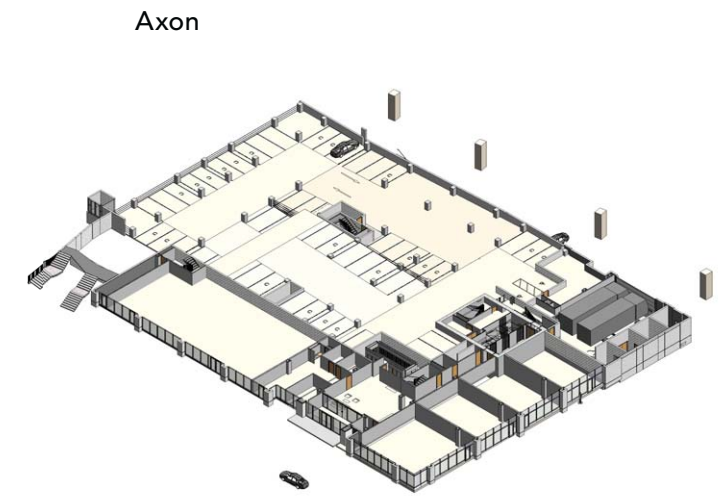
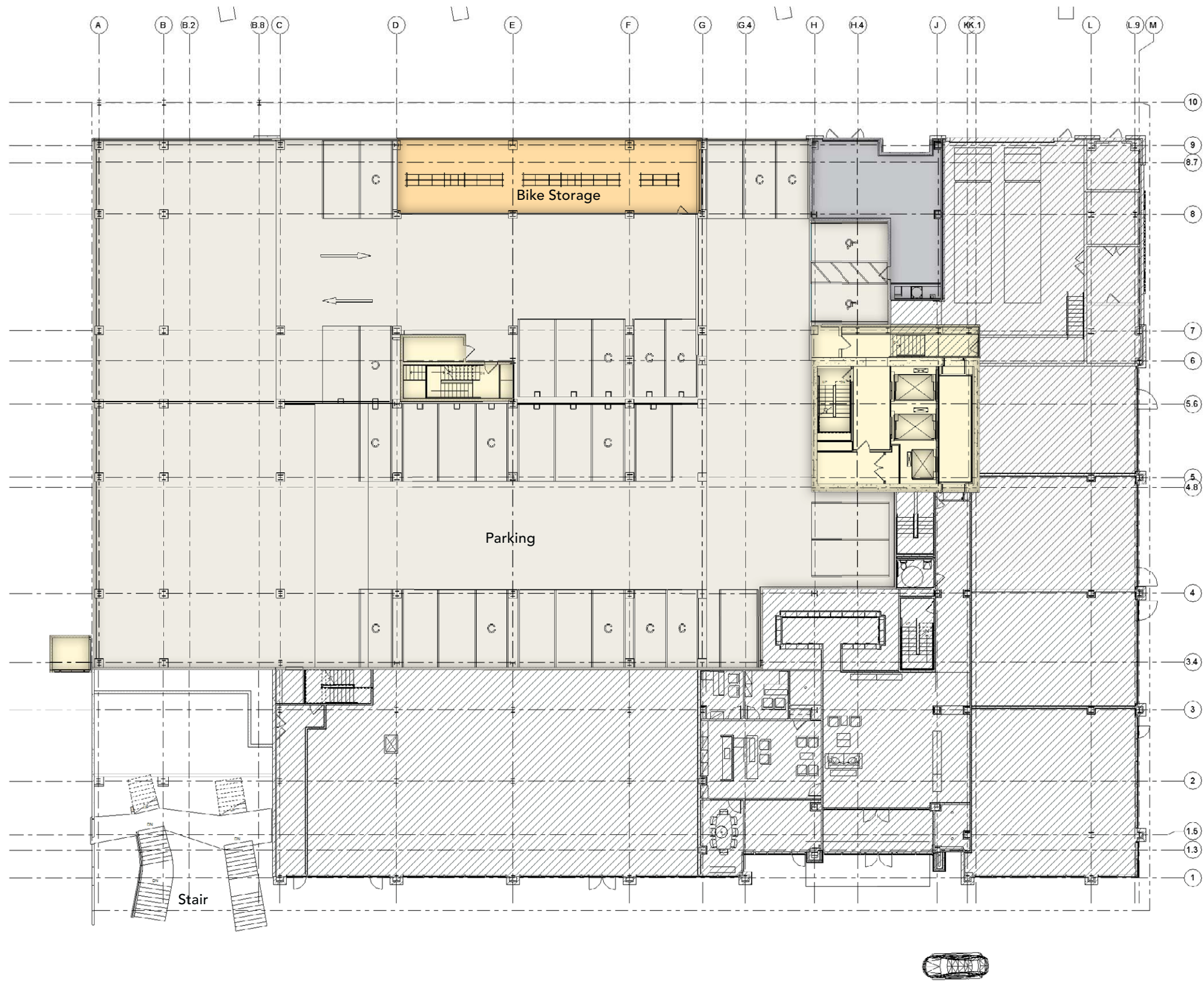
	Circulation		Landscape Area
	Amenity		Studio
	Retail		1 Bedroom
	Parking		2 Bedroom
	Back of House		3 Bedroom

**NorthPoint - Parcel N Apartment Tower**

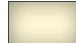

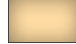

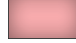

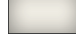



**floor plan - ground level**

City of Cambridge Design Review Submittal, NorthPoint, Cambridge, MA  
10.09.2012





**Key**

	Circulation		Landscape Area
	Amenity		Studio
	Retail		1 Bedroom
	Parking		2 Bedroom
	Back of House		3 Bedroom

# NorthPoint - Parcel N Apartment Tower

## floor plan - mezzanine

City of Cambridge Design Review Submittal, NorthPoint, Cambridge, MA  
10.09.2012



cbt





## NorthPoint - Parcel N Apartment Tower

City of Cambridge Design Review Submittal, NorthPoint, Cambridge, MA  
10.09.2012

## landscape site plan

landworks>studio cbt



## NorthPoint - Parcel N Apartment Tower

City of Cambridge Design Review Submittal, NorthPoint, Cambridge, MA  
10.09.2012

## landscape site plan

landworks>studio cbt



# NorthPoint - Parcel N Apartment Tower

## section - ellipse park

landworks>studio cbt

City of Cambridge Design Review Submittal, NorthPoint, Cambridge, MA  
10.09.2012



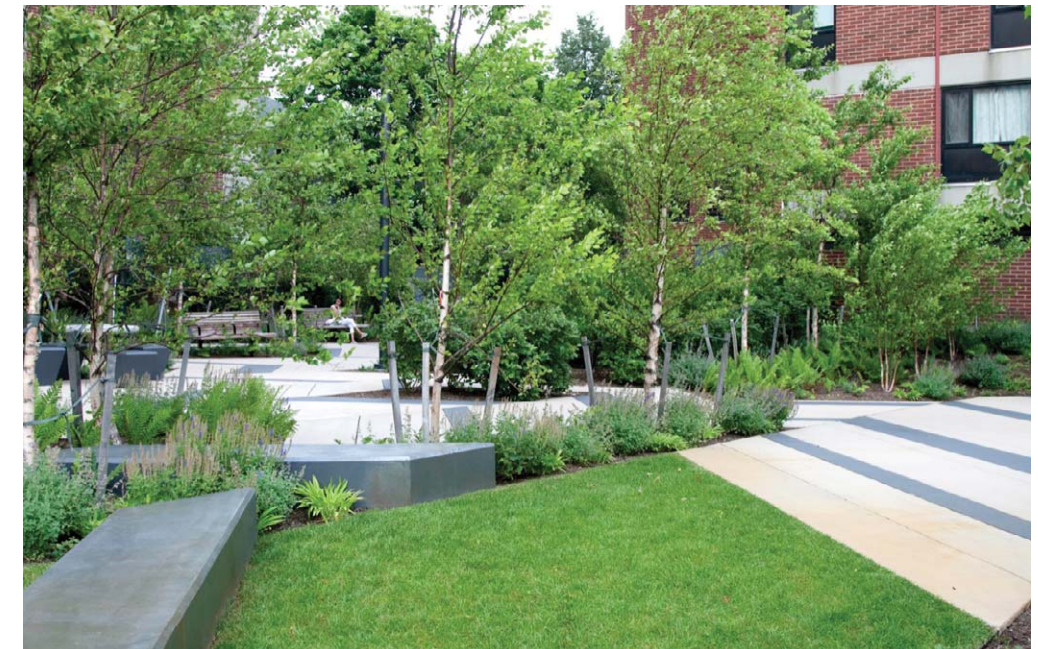
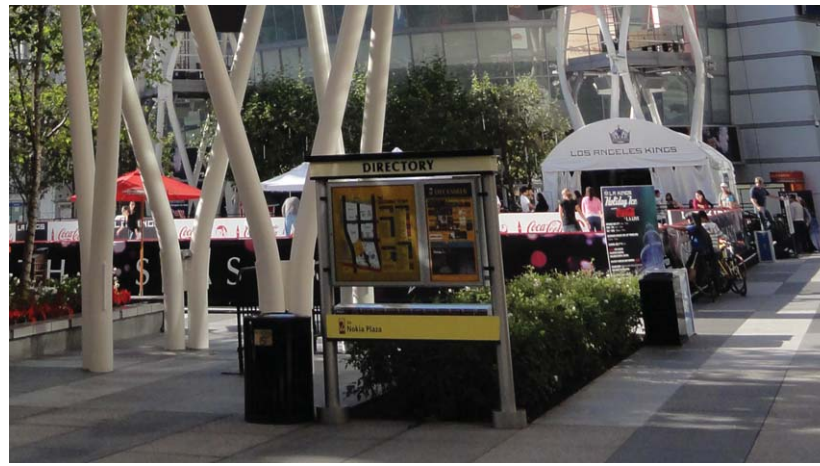
## NorthPoint - Parcel N Apartment Tower

City of Cambridge Design Review Submittal, NorthPoint, Cambridge, MA  
10.09.2012

view towards stair - ellipse park

landworks>studio cbt





**NorthPoint - Parcel N Apartment Tower**

City of Cambridge Design Review Submittal, NorthPoint, Cambridge, MA  
10.09.2012

paving precedents - ellipse park

landworks>studio cbt

**STREET TREES** - Canopy Trees with Strong Central Form and Bright Fall Color



*Liriodendron tulipifera*, Tulip Poplar



*Celtis occidentalis*, Hackberry

**PARK TREES** - Flowering Understory Trees with Multi-Seasonal Interest



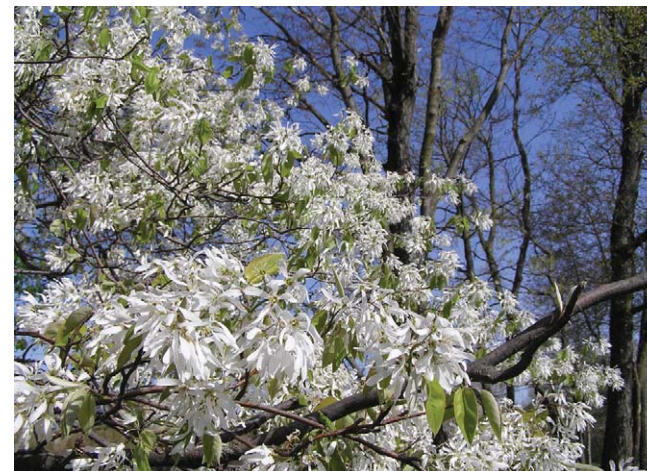
*Cercis canadensis*, Eastern Red Bud



*Stewartia pseudocamellia*, Japanese Stewartia



*Amelanchier arborea*, Serviceberry



**NorthPoint - Parcel N Apartment Tower**

City of Cambridge Design Review Submittal, NorthPoint, Cambridge, MA  
10.09.2012

**plant palette - ellipse park**

landworks>studio cbt

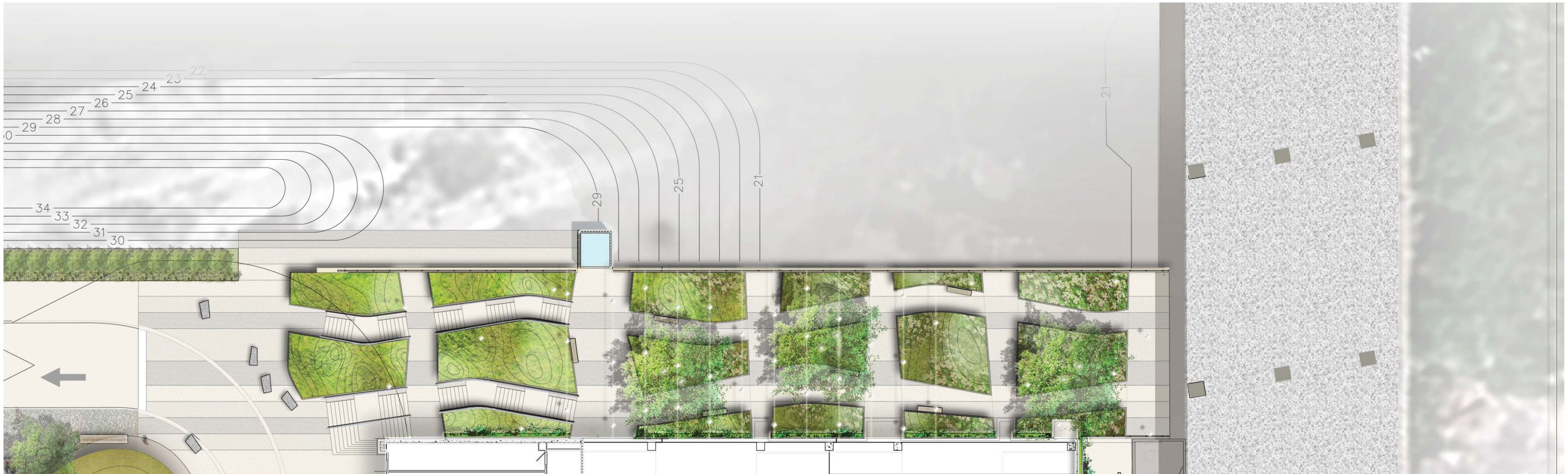


**NorthPoint - Parcel N Apartment Tower**

City of Cambridge Design Review Submittal, NorthPoint, Cambridge, MA  
10.09.2012

**site plan - northpoint stair**

landworks>studio cbt



LAWN: shade tolerant fescue mix

TRANSITION

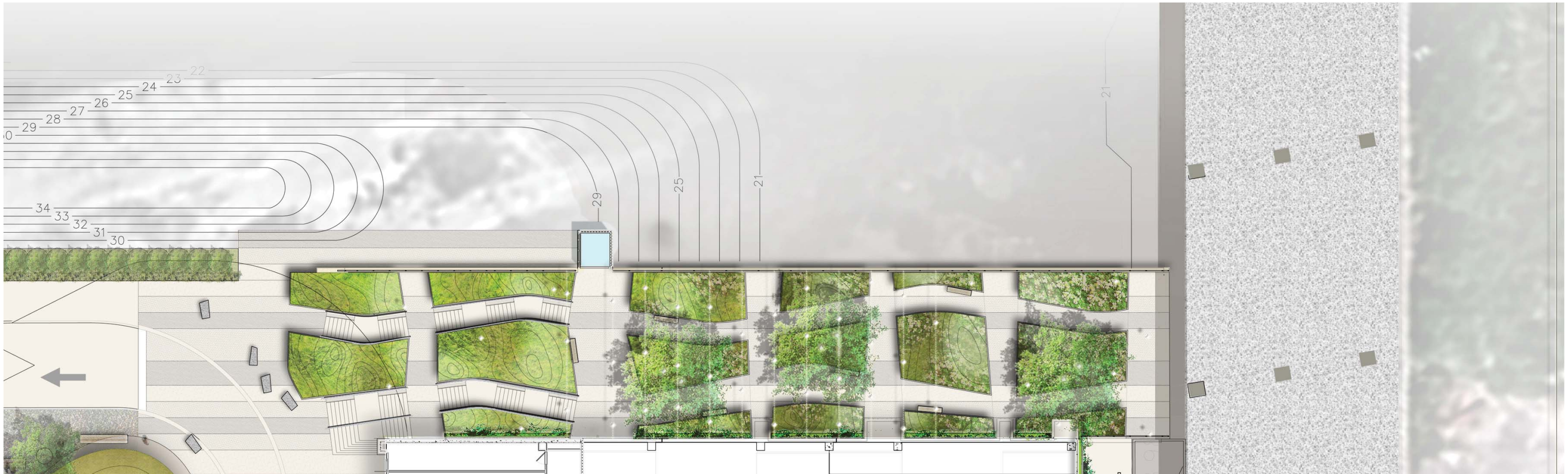
GROUND COVER: low 6"-12" HT seasonal interest mix



plant palette - northpoint stair

**NorthPoint - Parcel N Apartment Tower**

City of Cambridge Design Review Submittal, NorthPoint, Cambridge, MA  
10.09.2012



AMBIENT STAIR LIGHTING

OVERHEAD LIGHTING

BRIGHT THRESHOLD LIGHTING



## NorthPoint - Parcel N Apartment Tower

City of Cambridge Design Review Submittal, NorthPoint, Cambridge, MA  
10.09.2012

## lighting palette - northpoint stair

landworks>studio cbt



Mixed Evergreen and Deciduous Vines on Concrete Wall, Boston, MA

Proposed Evergreen Species *Euonymus manhattan* growing in Salem, MA

## NorthPoint - Parcel N Apartment Tower

### section - northpoint stair

City of Cambridge Design Review Submittal, NorthPoint, Cambridge, MA  
10.09.2012

landworks>studio cbt



## NorthPoint - Parcel N Apartment Tower

City of Cambridge Design Review Submittal, NorthPoint, Cambridge, MA  
10.09.2012

view towards bridge - northpoint stair

landworks>studio cbt

DECIDUOUS TWINING VINES



*Vitis coignetia*  
Glory Vine

DECIDUOUS SUCKERING VINES



*Hydrangea petiolaris*  
Climbing Hydrangea



*Parthenocissus quinquefolia*  
Virginia Creeper

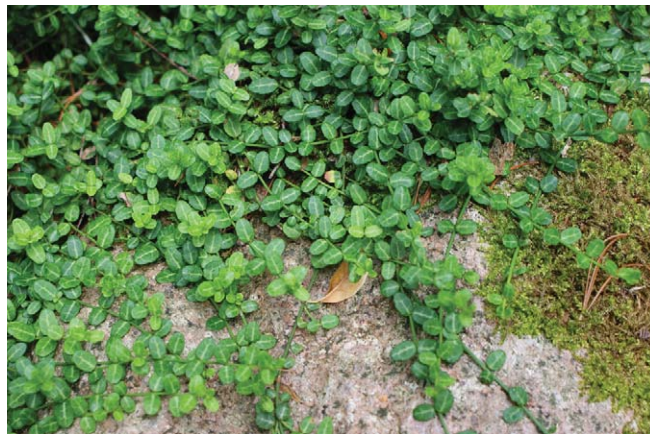


*Parthenocissus tricuspidata*  
Boston Ivy



*Schizophragma hydrangeoides*  
Japanese hydrangea vine

EVERGREEN TWINING VINES



*Euonymus fortunei*  
Wintercreeper



*Euonymus manhattan*  
Wintercreeper

EVERGREEN SUCKERING VINES



*Hedera helix*  
English Ivy

SEMI-EVERGREEN TWINING VINES



*Lonicera sempervirens* 'Dropmore Scarlet'  
Trumpet Honeysuckle





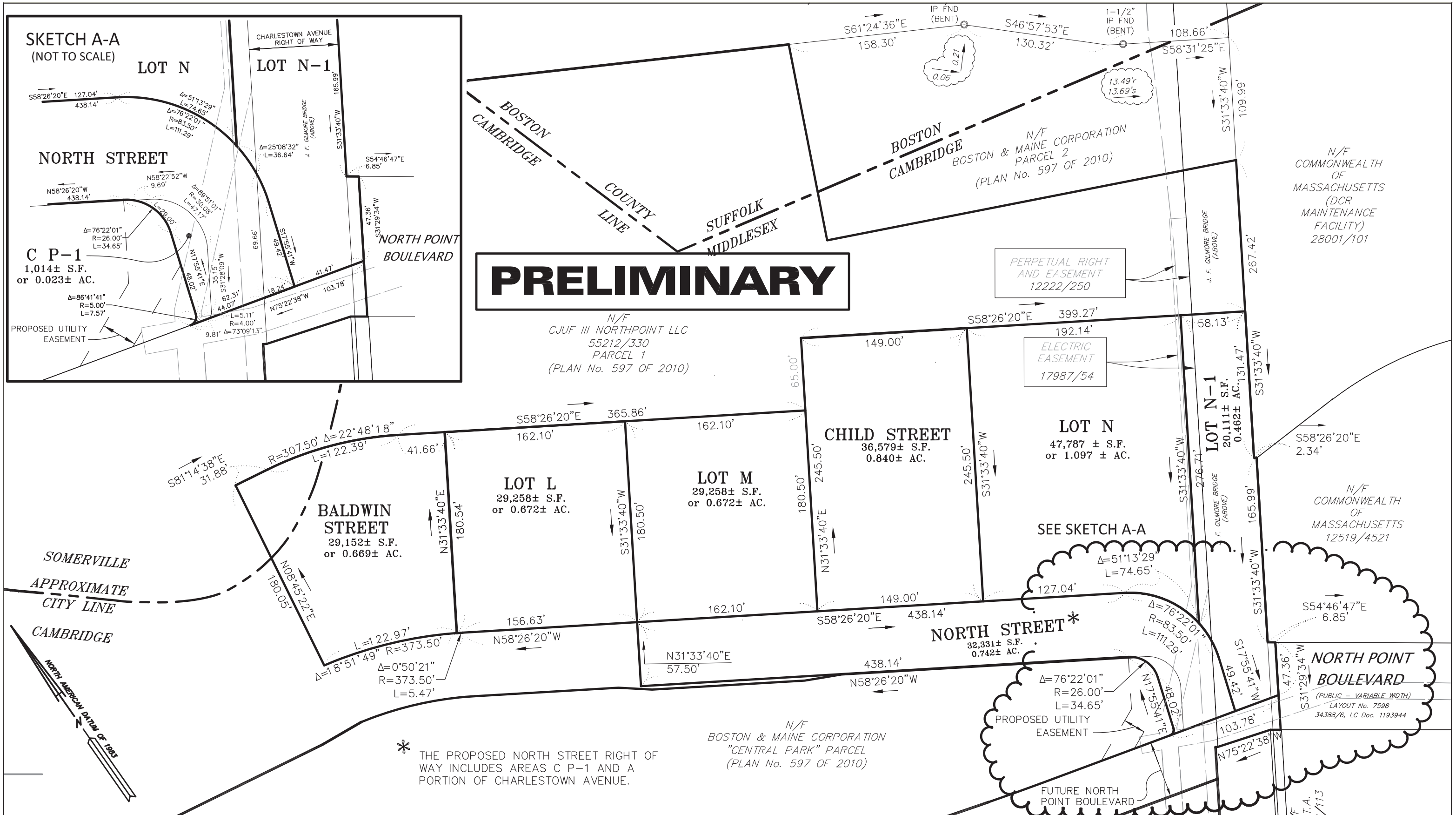
Proposed Evergreen Species *Euonymus manhattan* growing in Salem, MA

**NorthPoint - Parcel N Apartment Tower**

City of Cambridge Design Review Submittal, NorthPoint, Cambridge, MA  
10.09.2012

**east elevation - gilmore bridge view**

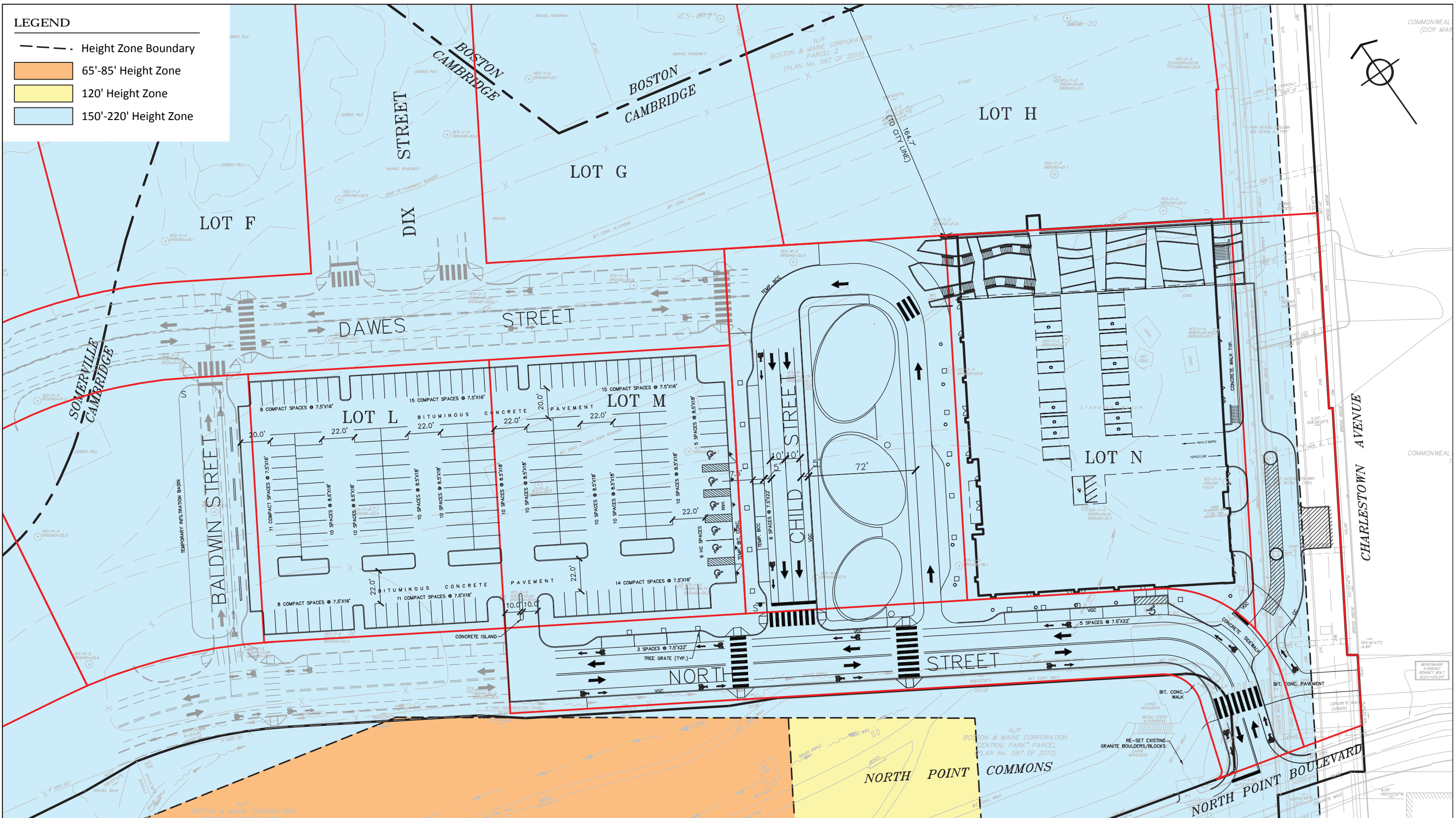
landworks>studio cbt



**NorthPoint - Parcel N Apartment Tower**

**metes and bounds plan (preliminary)**

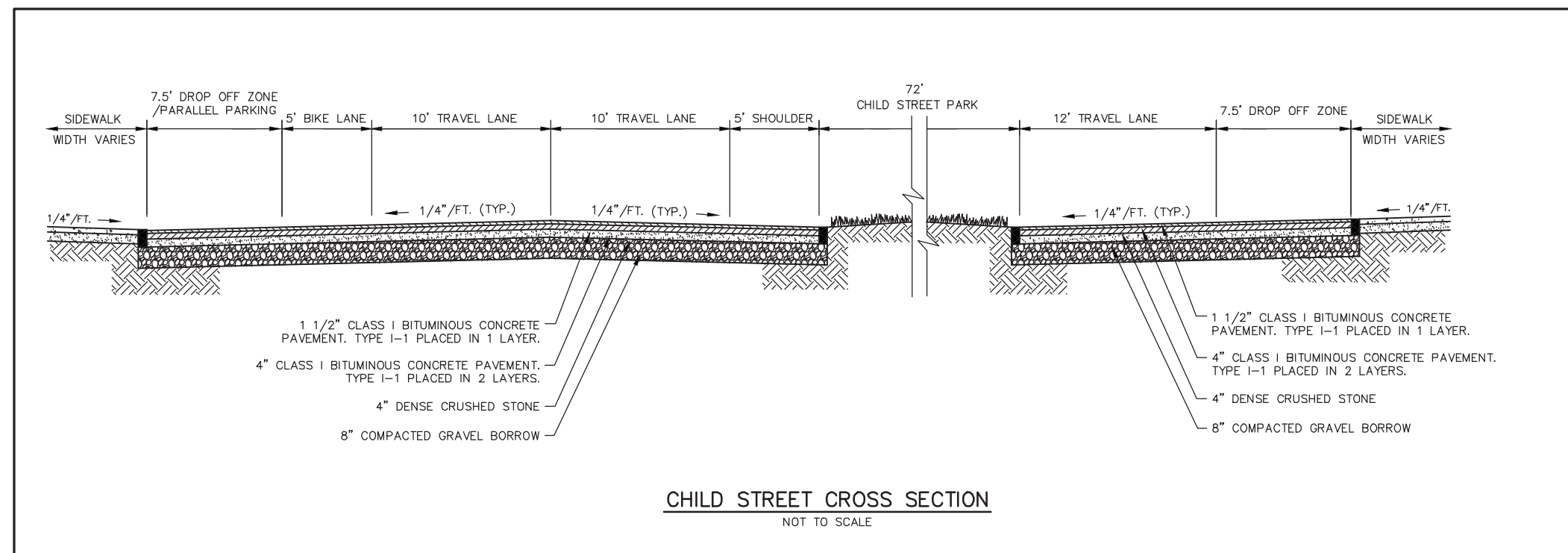
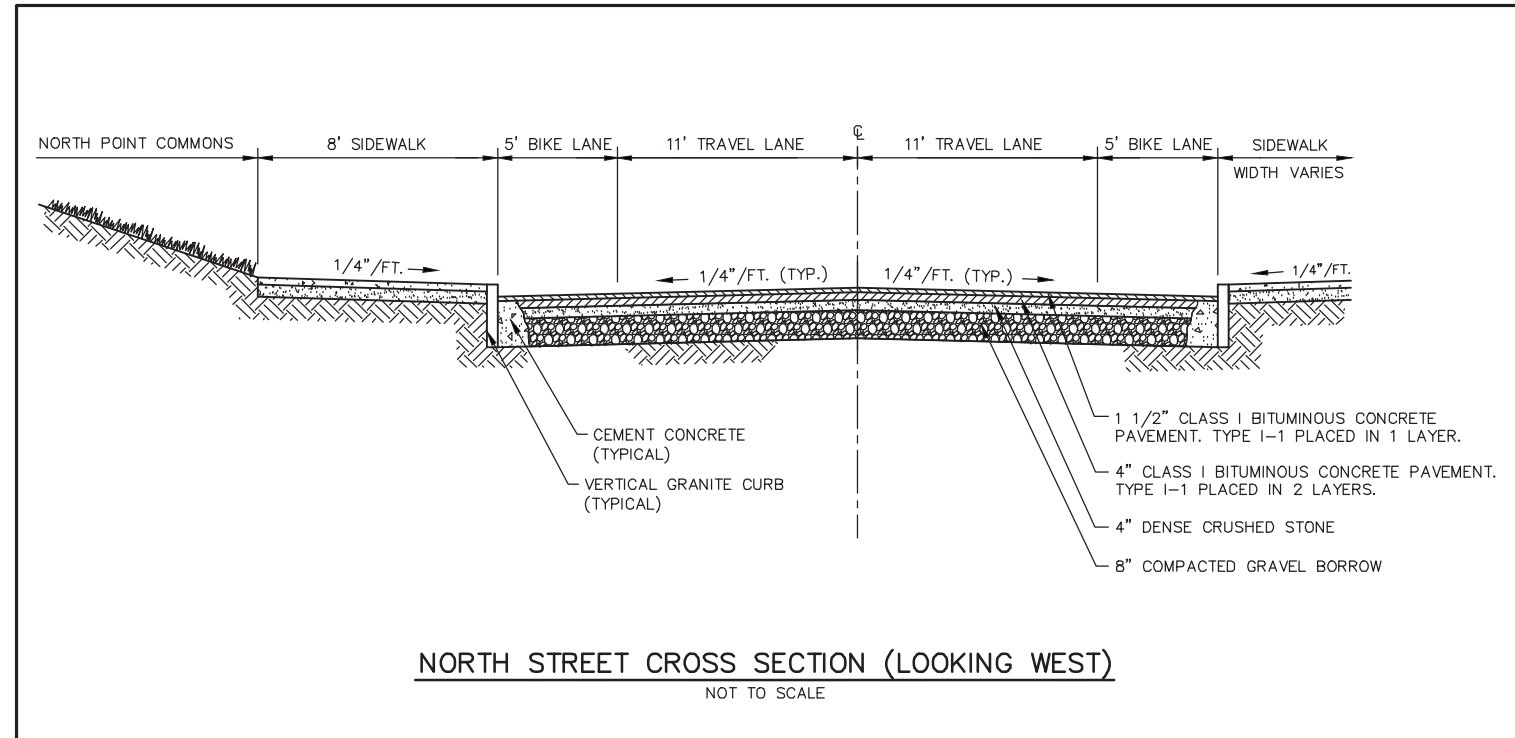
City of Cambridge Design Review Submittal, North Point, Cambridge, MA  
 10.09.2012



# NorthPoint - Parcel N Apartment Tower

## site plan

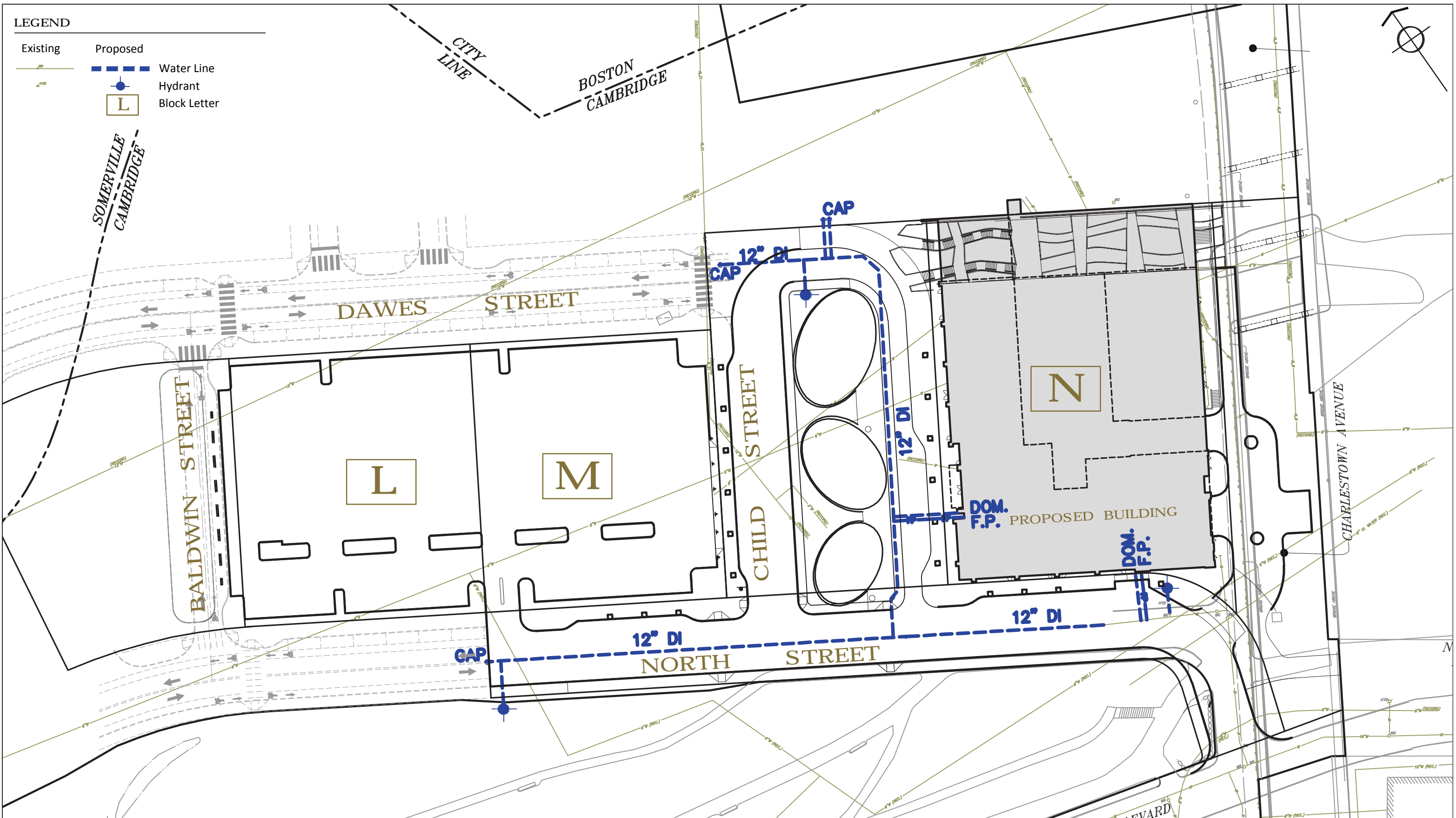
City of Cambridge Design Review Submittal, North Point, Cambridge, MA  
10.09.2012



# NorthPoint - Parcel N Apartment Tower

## street cross sections

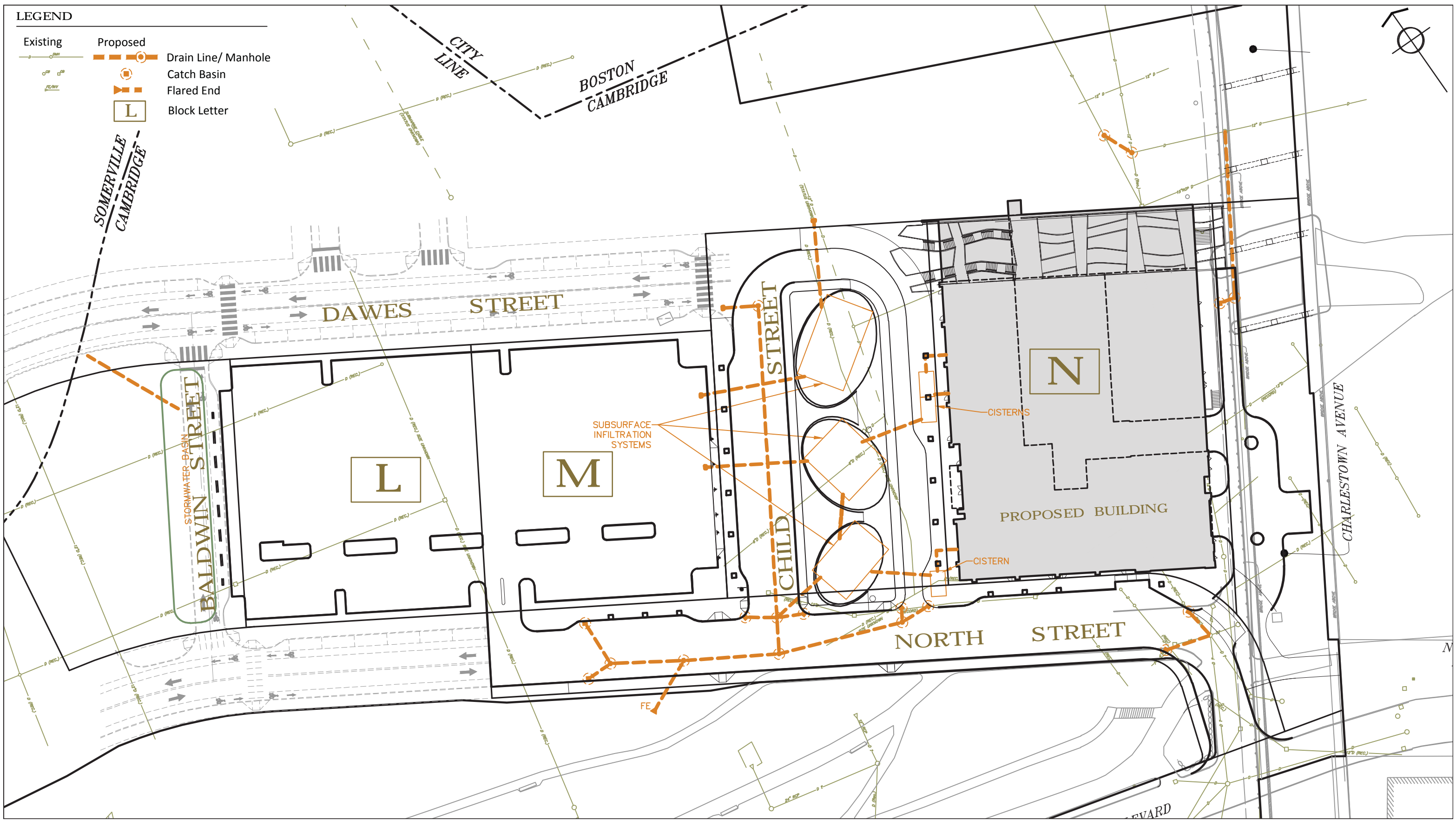
City of Cambridge Design Review Submittal, North Point, Cambridge, MA  
10.09.2012



# NorthPoint - Parcel N Apartment Tower

## water supply

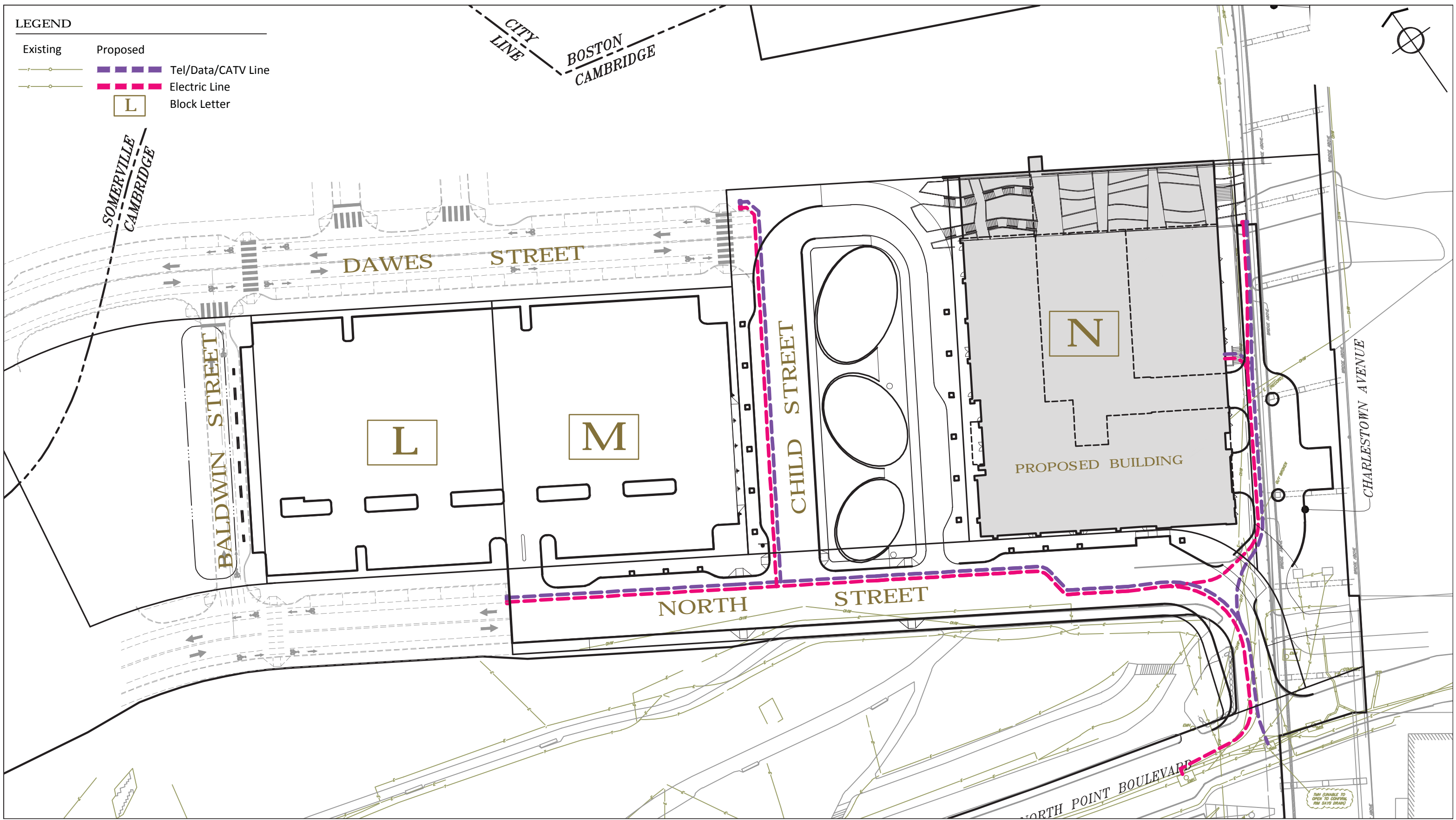
City of Cambridge Design Review Submittal, North Point, Cambridge, MA  
10.09.2012



# NorthPoint - Parcel N Apartment Tower

## drainage exhibit

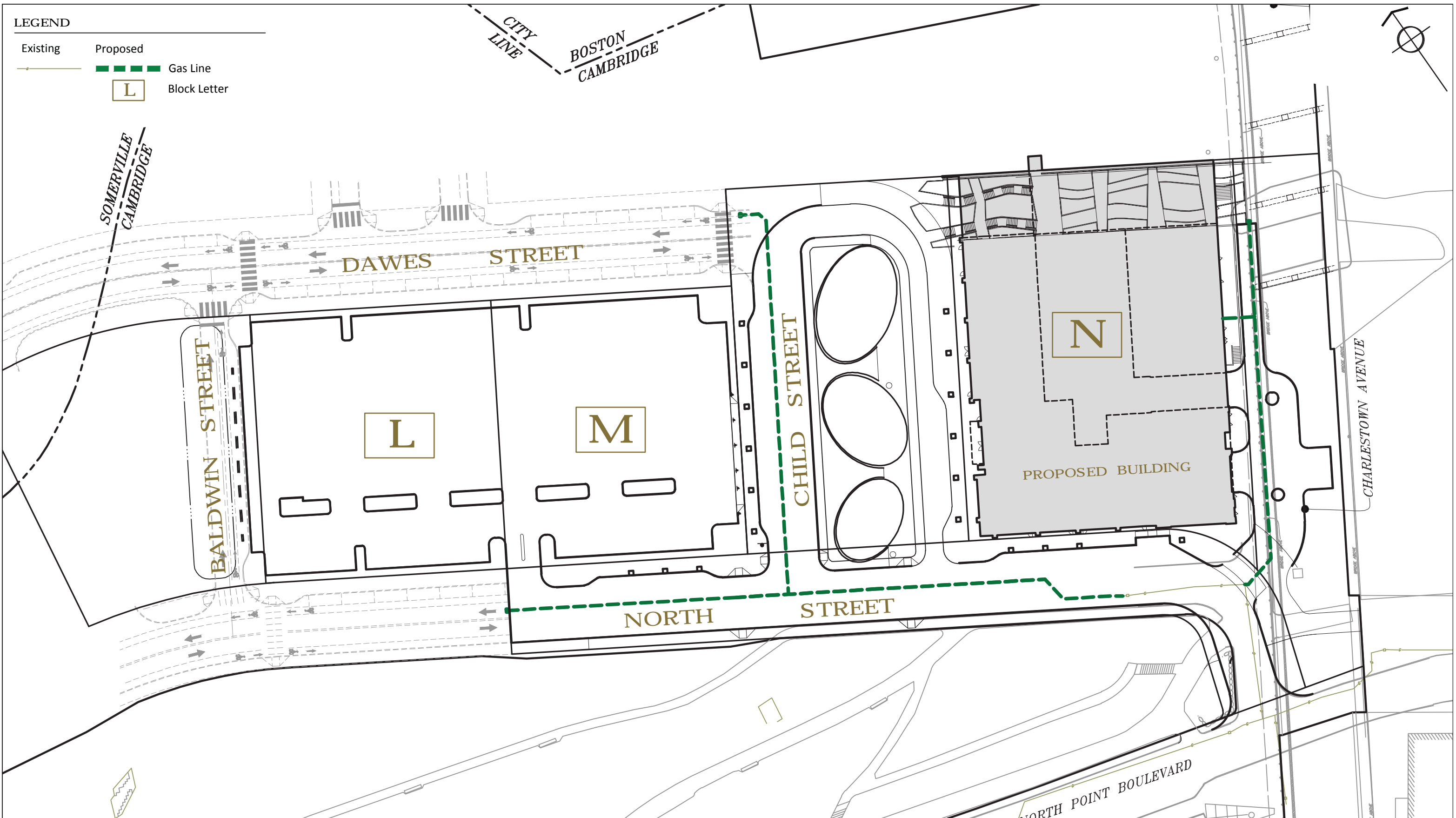
City of Cambridge Design Review Submittal, North Point, Cambridge, MA  
10.09.2012



**NorthPoint - Parcel N Apartment Tower**

**electric & tel / data / catv**

City of Cambridge Design Review Submittal, North Point, Cambridge, MA  
10.09.2012

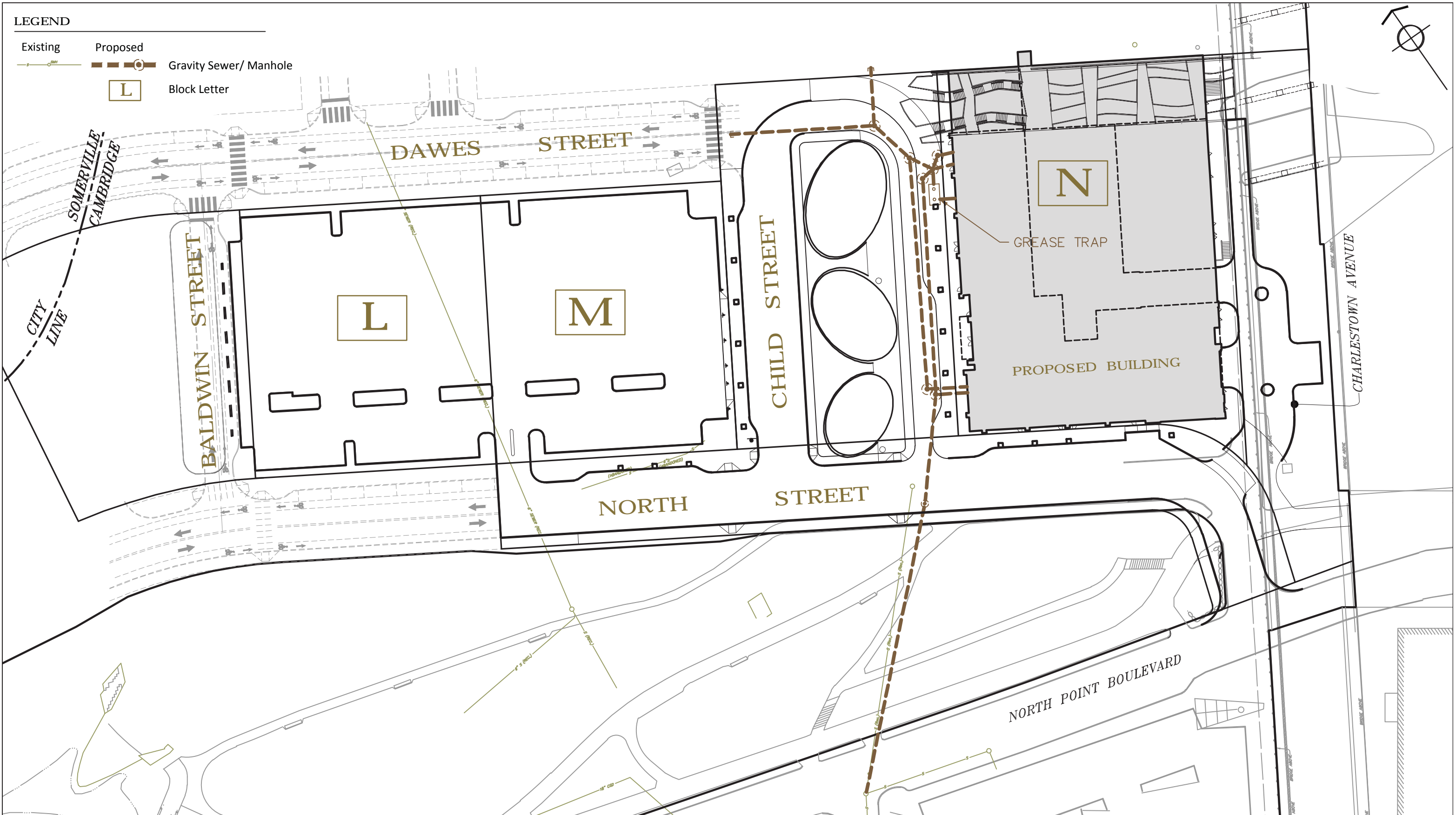


# NorthPoint - Parcel N Apartment Tower

gas supply

City of Cambridge Design Review Submittal, North Point, Cambridge, MA  
10.09.2012





# NorthPoint - Parcel N Apartment Tower

## sanitary sewer

City of Cambridge Design Review Submittal, North Point, Cambridge, MA  
10.09.2012