

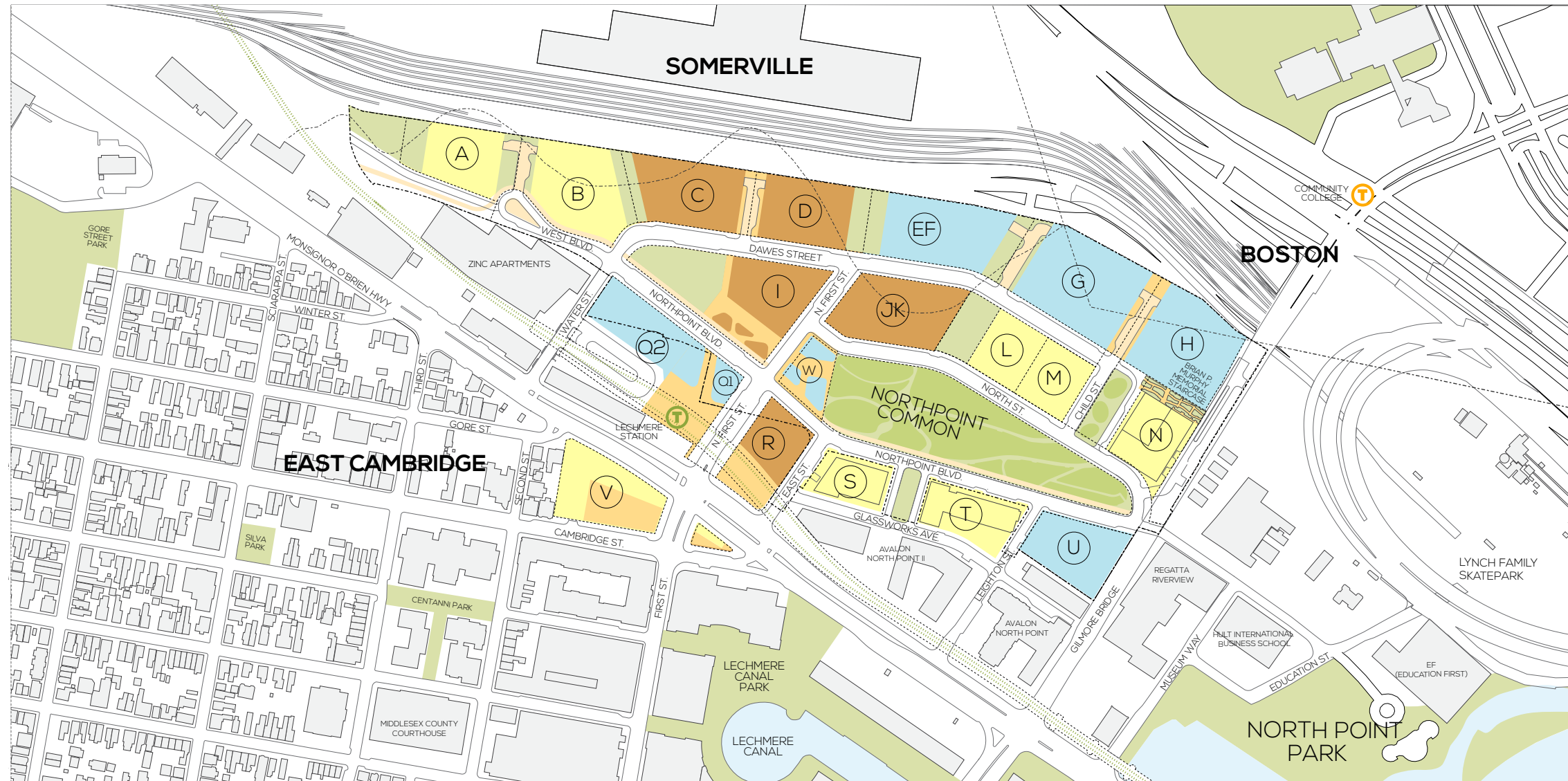
Section 3.0 Exhibits

Revised Master Plan – Exhibit A
Revised Conceptual Retail Plan – Exhibit B
Public Notification Panel Locations – Exhibit C
Proposed 220' Parcel Identification Cambridge – Exhibit G
Revised Open Space Plan – Exhibit H
Revised Phasing – Exhibit I
Revised 40-scale Roadway Network Schematic Plans (5 sheets) (reduced to 11x17") – Exhibit J
Existing Conditions Plans (5 sheets) (reduced to 11x17") – Exhibit K
VHB Memorandum to TPTD re: Phasing and Trip Generation – Exhibit L
VHB Memorandum to TPTD re: Internal Roadway Layout Revisions – Exhibit M
ECPT Letter of Support – Exhibit N

Appendix

Appendix I: Revised Statistical Summary of the Approved Master Plan
Full-size Revised 40-scale Roadway Network Schematic Plans (5 sheets) (CDD, DPW, TPTD,
Water Department copies)
Full-size Existing Conditions Plans (5 sheets) (CDD, DPW, TPTD, Water Department copies)

NORTHPOINT



LEGEND

- Residential
- Commercial
- Residential, Commercial or Mixed-Use

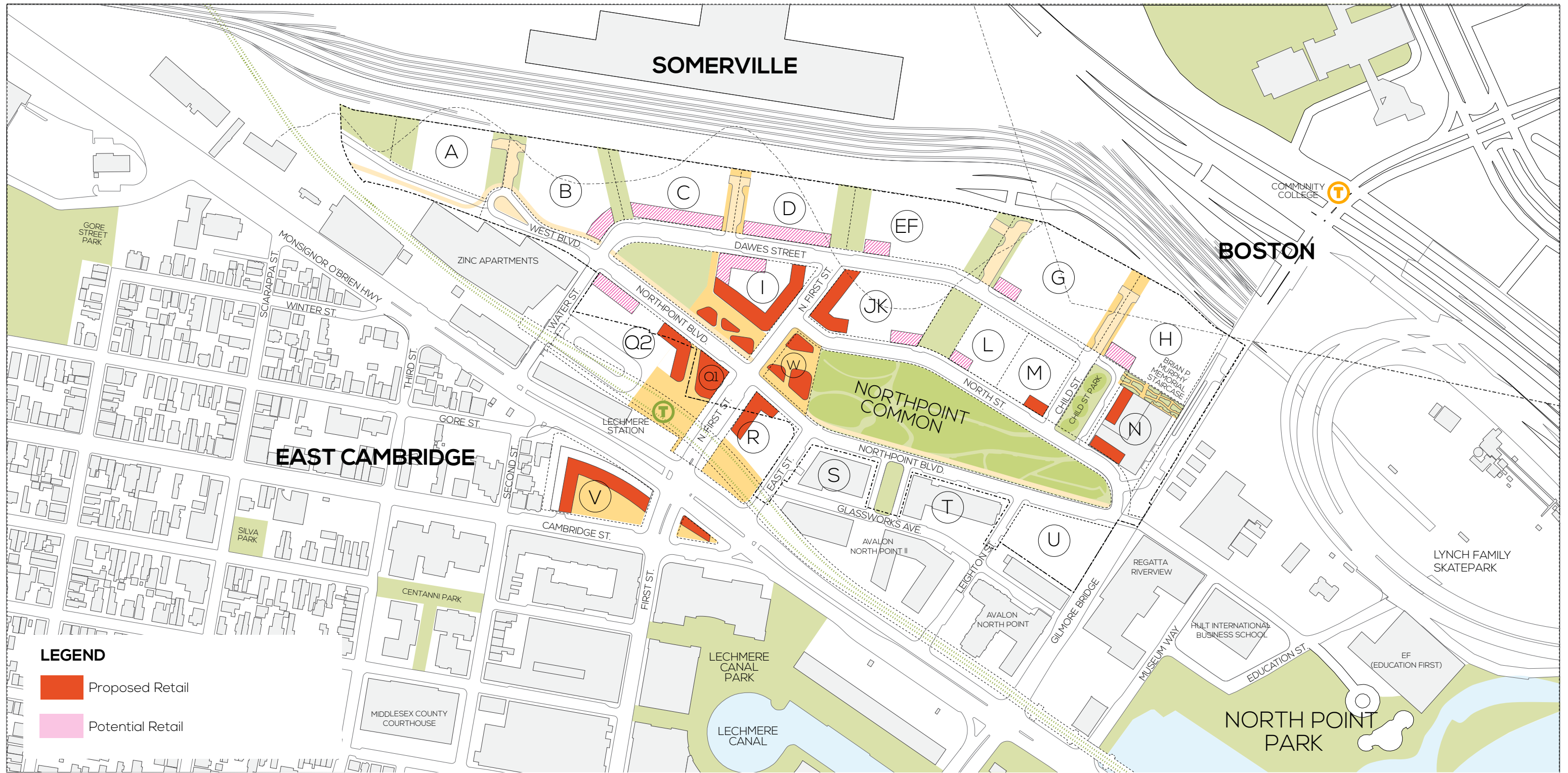
Table 1:
GFA by Block

	GFA	USE
A	175,000 gsf	RESIDENTIAL
B	373,000 gsf	RESIDENTIAL
C	348,000 gsf	MIXED-USE
D	340,000 gsf	MIXED-USE
EF	400,000 gsf	COMMERCIAL
G	410,000 gsf	COMMERCIAL
H	345,000 gsf	COMMERCIAL
I	390,000 gsf	MIXED-USE
JK	370,000 gsf	MIXED-USE
L	286,000 gsf	RESIDENTIAL
M	208,400 gsf	RESIDENTIAL
N	394,000 gsf	RESIDENTIAL
Q1	14,000 gsf	COMMERCIAL
Q2	151,062 gsf	COMMERCIAL
R	148,945 gsf	MIXED-USE
S	112,398 gsf	RESIDENTIAL
T	242,194 gsf	RESIDENTIAL
U	320,000 gsf	COMMERCIAL
V	199,855 gsf	RESIDENTIAL
W	18,000 gsf	COMMERCIAL
	5,245,854 gsf	

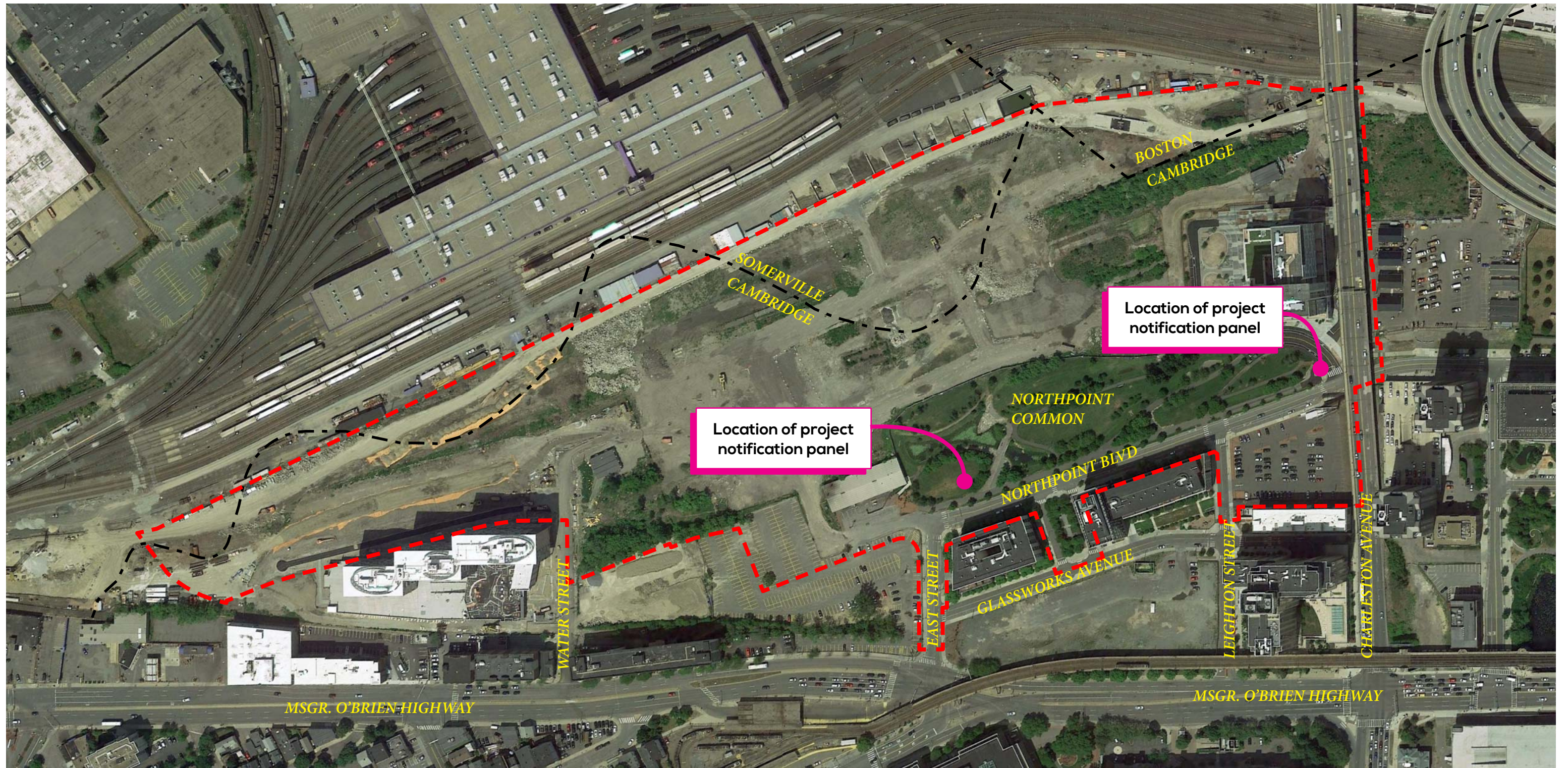
Table 2:
Special Permit Approved GFA (Entire Master Plan)

Maximum Non Residential:	2,185,062 gsf
Minimum Residential:	3,060,792 gsf
Maximum Total:	5,245,854 gsf

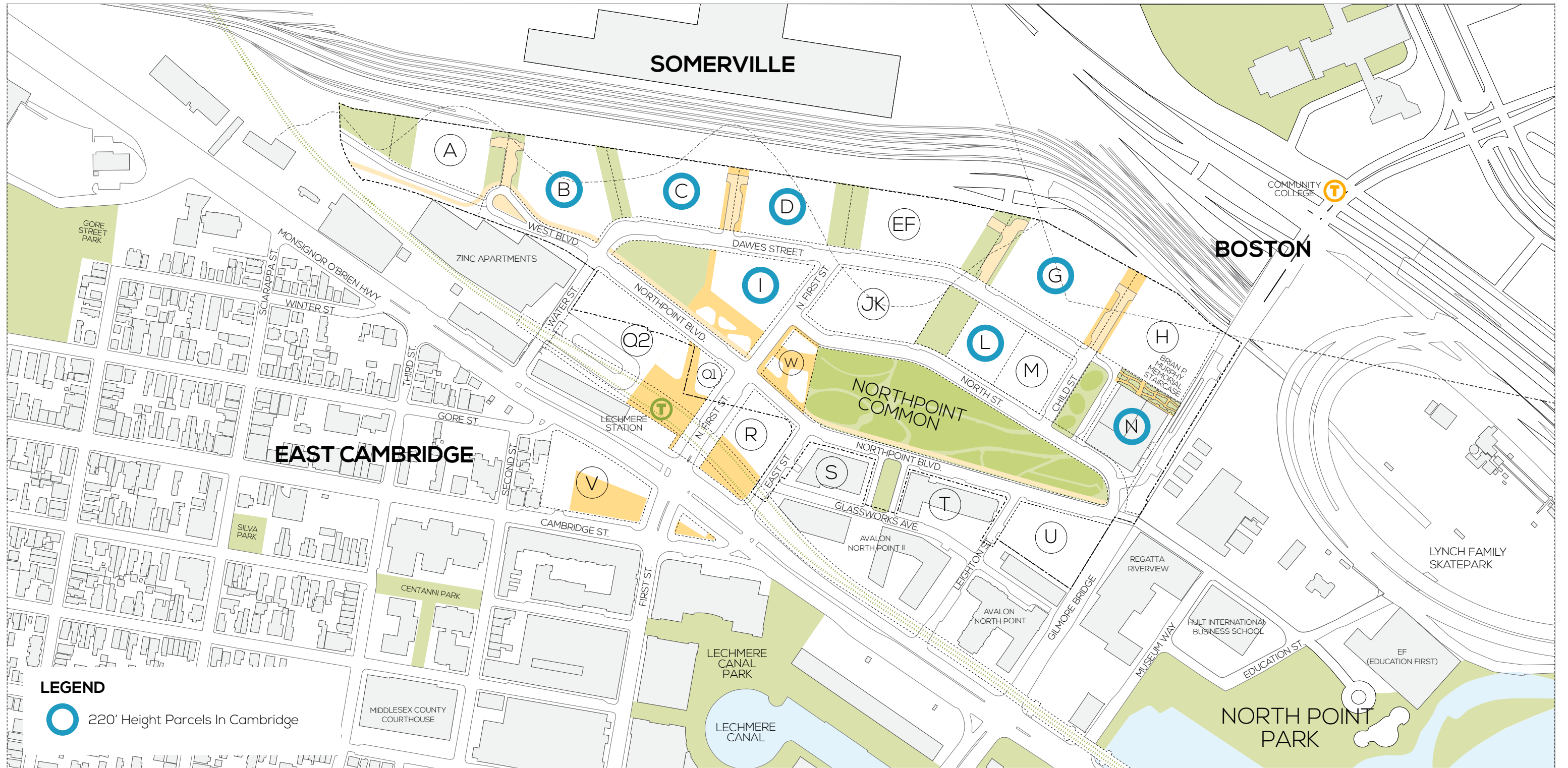
NORTHPOINT



NORTHPOINT



NORTHPOINT



NORTHPOINT

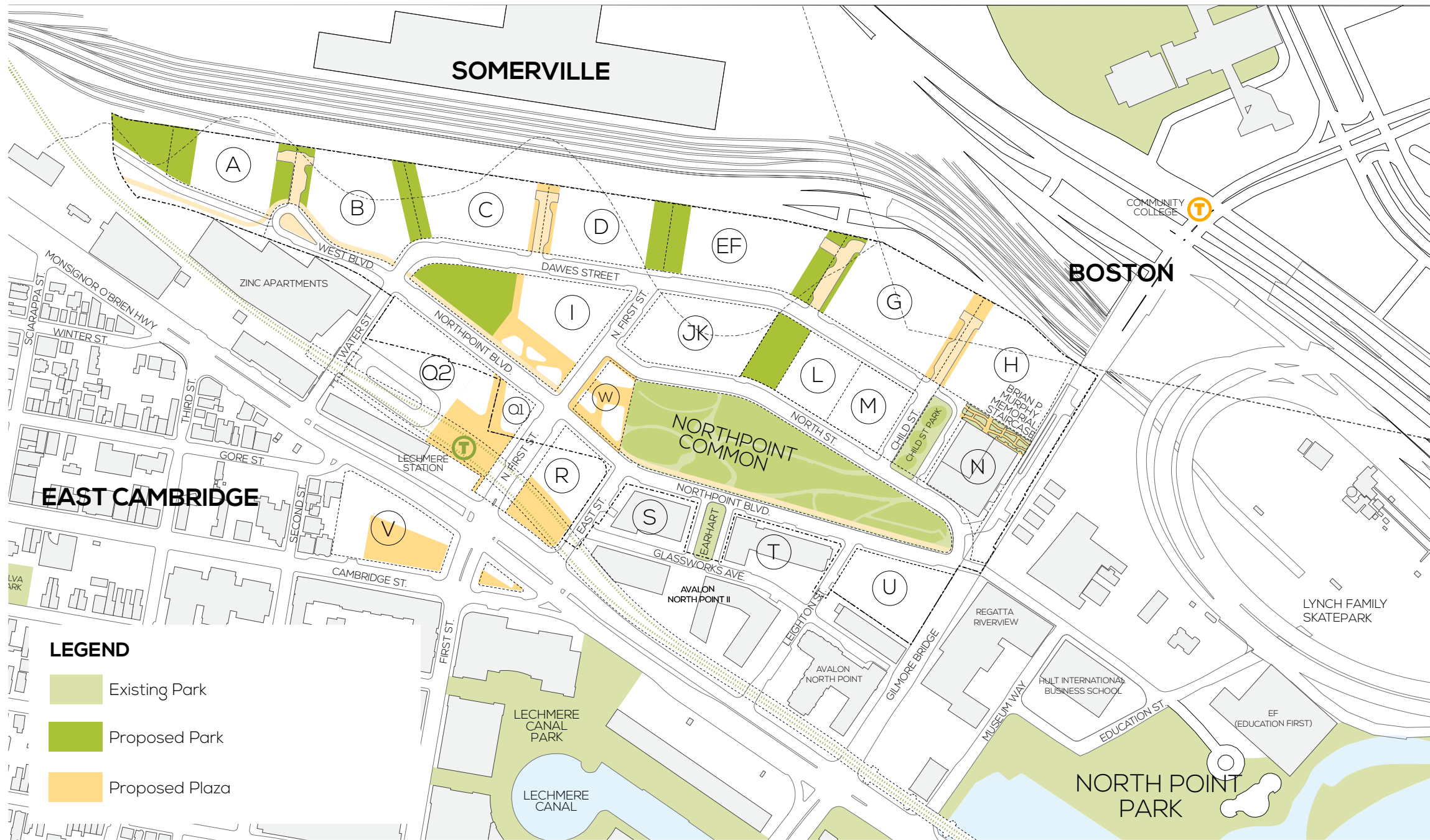
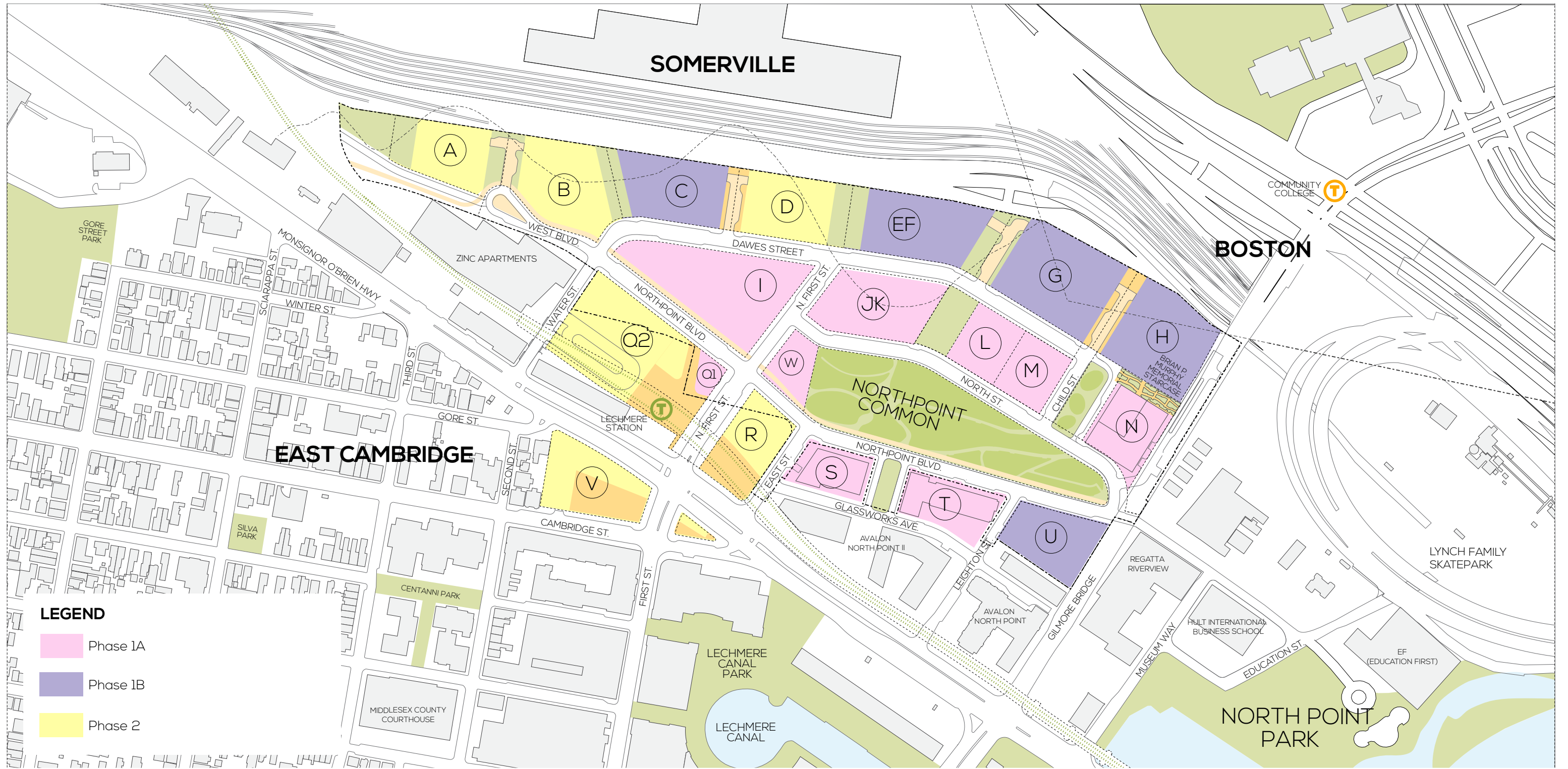
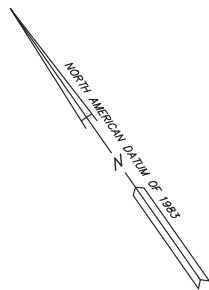
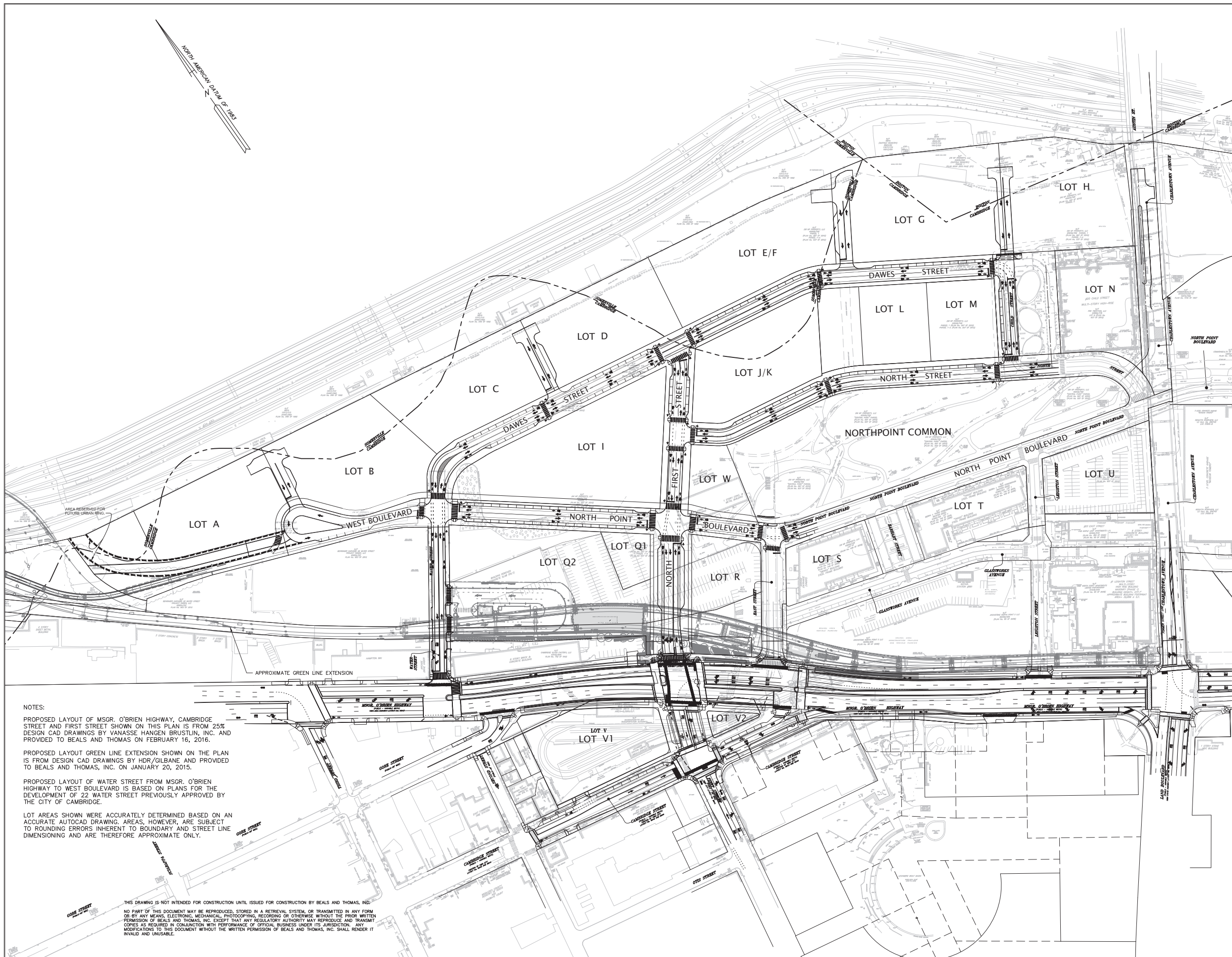


Table 1:
Open Space Summary - March 2016

	Acres	SF
Approved Open Space	11.00	479,160
Completed Open Spaces		
Northpoint Common	4.36	190,000
Earhart Park	0.19	8,100
Child St. Park	0.40	17,500
Brian P. Murphy Memorial Stair	0.18	7,750
Total Completed Open Space	5.13	223,463
Proposed Open Space	5.87	255,697

NORTHPOINT





PREPARED FOR:

**DW NP
PROPERTY, LLC**

One Kendall Square
Suite B3201
Cambridge, MA 012139

LOCUS MAP
SCALE: N.T.S.

COPYRIGHT (C) BY BEALS AND THOMAS, INC.
ALL RIGHTS RESERVED

PREPARED BY:

BEALS+THOMAS
Civil Engineers + Landscape Architects +
Land Surveyors + Planners +
Environmental Specialists

BEALS AND THOMAS, INC.
Reservoir Corporate Center
144 Turnpike Road
Southborough, Massachusetts 01772-2104
T 508.366.0560 | www.btiweb.com

NOTES:

PROPOSED LAYOUT OF MSGR, O'BRIEN HIGHWAY, CAMBRIDGE STREET AND FIRST STREET SHOWN ON THIS PLAN IS FROM 25% DESIGN CAD DRAWINGS BY VANASSE HANGEN BRUSTLIN, INC. AND PROVIDED TO BEALS AND THOMAS ON FEBRUARY 16, 2016.

PROPOSED LAYOUT GREEN LINE EXTENSION SHOWN ON THE PLAN IS FROM DESIGN CAD DRAWINGS BY HDR/GILBANE AND PROVIDED TO BEALS AND THOMAS, INC. ON JANUARY 20, 2015.

PROPOSED LAYOUT OF WATER STREET FROM MSGR, O'BRIEN HIGHWAY TO WEST BOULEVARD IS BASED ON PLANS FOR THE DEVELOPMENT OF 22 WATER STREET PREVIOUSLY APPROVED BY THE CITY OF CAMBRIDGE.

LOT AREAS SHOWN WERE ACCURATELY DETERMINED BASED ON AN ACCURATE AUTOCAD DRAWING. AREAS, HOWEVER, ARE SUBJECT TO ROUNDING ERRORS INHERENT TO BOUNDARY AND STREET LINE DIMENSIONING AND ARE THEREFORE APPROXIMATE ONLY.

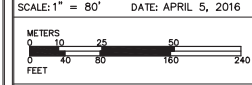
THIS DRAWING IS NOT INTENDED FOR CONSTRUCTION UNTIL ISSUED FOR CONSTRUCTION BY BEALS AND THOMAS, INC.
NO PART OF THIS DOCUMENT MAY BE REPRODUCED, STORED IN A RETRIEVAL SYSTEM, OR TRANSMITTED IN ANY FORM OR BY ANY MEANS, ELECTRONIC, MECHANICAL, PHOTOCOPIING, RECORDING OR OTHERWISE WITHOUT THE PRIOR WRITTEN PERMISSION OF BEALS AND THOMAS, INC. EXCEPT THAT ANY REGULATORY AUTHORITY MAY REPRODUCE AND TRANSMIT COPIES AS REQUIRED IN CONFORMANCE WITH PERFORMANCE OF OFFICIAL BUSINESS UNDER ITS JURISDICTION. ANY MODIFICATIONS TO THIS DOCUMENT WITHOUT THE WRITTEN PERMISSION OF BEALS AND THOMAS, INC. SHALL RENDER IT INVALID AND UNUSABLE.

5			
4			
3			
2			
1			
0	04/05/2016 SPECIAL PERMIT AMENDMENT #6		
	ISSUE DATE DESCRIPTION		
DES	DWN	CHK'D	APP'D

PROJECT:

**NORTH POINT
IN CAMBRIDGE AND
SOMERVILLE, MA
(MIDDLESEX COUNTY)
AND BOSTON, MA
(SUFFOLK COUNTY)**

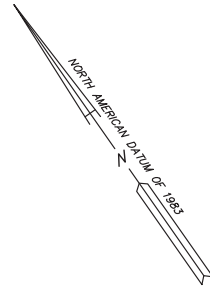
SCALE: 1" = 80' DATE: APRIL 5, 2016



**INDEX
ROADWAY NETWORK
SCHEMATIC PLANS**

B+T JOB NO. 2084.02
B+T PLAN NO. 208402P235A-001

**Exhibit J
1**



THIS DRAWING IS NOT INTENDED FOR CONSTRUCTION UNTIL ISSUED FOR CONSTRUCTION BY BEALS AND THOMAS, INC.
 NO PART OF THIS DOCUMENT MAY BE REPRODUCED, STORED IN A RETRIEVAL SYSTEM, OR TRANSMITTED IN ANY FORM OR BY ANY MEANS, ELECTRONIC, MECHANICAL, PHOTOCOPIING, RECORDING OR OTHERWISE WITHOUT THE PRIOR WRITTEN PERMISSION OF BEALS AND THOMAS, INC. EXCEPT THAT ANY REGULATORY AUTHORITY MAY REPRODUCE AND TRANSMIT COPIES AS REQUIRED IN CONNECTION WITH PERFORMANCE OF OFFICIAL BUSINESS UNDER ITS JURISDICTION. ANY MODIFICATIONS TO THIS DOCUMENT WITHOUT THE WRITTEN PERMISSION OF BEALS AND THOMAS, INC. SHALL RENDER IT INVALID AND UNUSABLE.

PREPARED FOR:

**DW NP
PROPERTY, LLC**

One Kendall Square
Suite B3201
Cambridge, MA 012139

LOCUS MAP
SCALE: N.T.S.



COPYRIGHT (C) BY BEALS AND THOMAS, INC.
ALL RIGHTS RESERVED

PREPARED BY:

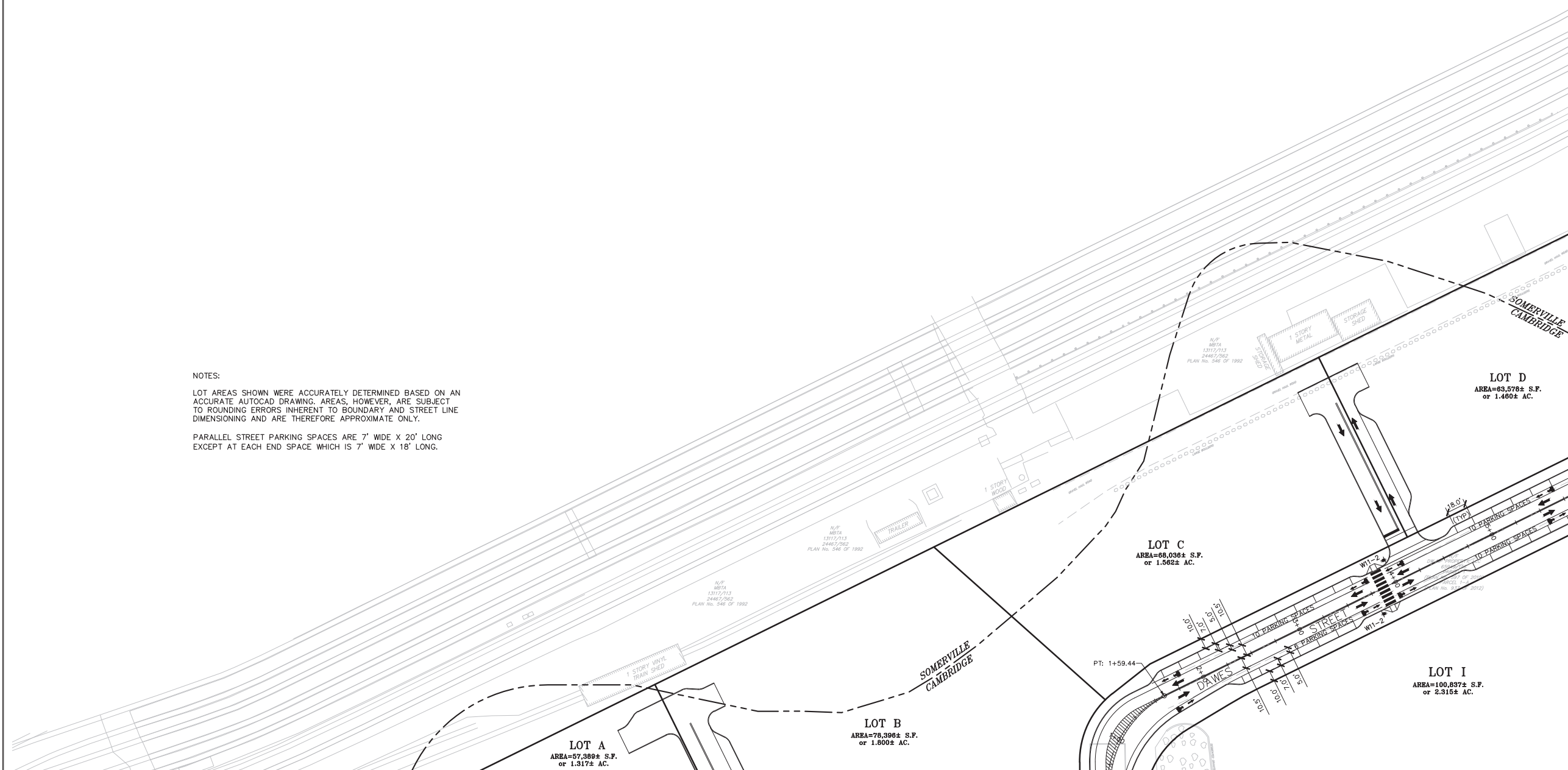


BEALS AND THOMAS, INC.
Reservoir Corporate Center
144 Turnpike Road
Southborough, Massachusetts 01772-2104
T 508.366.0560 | www.btiweb.com

NOTES:

LOT AREAS SHOWN WERE ACCURATELY DETERMINED BASED ON AN ACCURATE AUTOCAD DRAWING. AREAS, HOWEVER, ARE SUBJECT TO ROUNDING ERRORS INHERENT TO BOUNDARY AND STREET LINE DIMENSIONING AND ARE THEREFORE APPROXIMATE ONLY.

PARALLEL STREET PARKING SPACES ARE 7' WIDE X 20' LONG EXCEPT AT EACH END SPACE WHICH IS 7' WIDE X 18' LONG.



5			
4			
3			
2			
1			
0	04/05/2016 SPECIAL PERMIT AMENDMENT #6		
ISSUE DATE	DESCRIPTION		
DES	DWN	CHK'D	APP'D

PROJECT:

**NORTH POINT
IN CAMBRIDGE AND
SOMERVILLE, MA
(MIDDLESEX COUNTY)
AND BOSTON, MA
(SUFFOLK COUNTY)**

SCALE: 1" = 40' DATE: APRIL 5, 2016



**QUAD 1
ROADWAY NETWORK
SCHEMATIC PLANS**

B+T JOB NO. 2084.02
B+T PLAN NO.
208402P235A-002

Exhibit J
2

NOTES:

LOT AREAS SHOWN WERE ACCURATELY DETERMINED BASED ON AN ACCURATE AUTOCAD DRAWING. AREAS, HOWEVER, ARE SUBJECT TO ROUNDING ERRORS INHERENT TO BOUNDARY AND STREET LINE DIMENSIONING AND ARE THEREFORE APPROXIMATE ONLY.

PARALLEL STREET PARKING SPACES ARE 7' WIDE X 20' LONG EXCEPT AT EACH END SPACE WHICH IS 7' WIDE X 18' LONG.

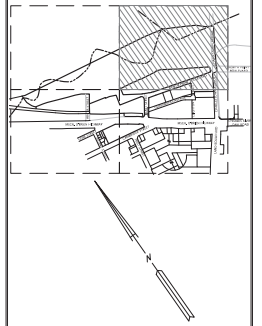
THIS DRAWING IS NOT INTENDED FOR CONSTRUCTION UNTIL ISSUED FOR CONSTRUCTION BY BEALS AND THOMAS, INC. NO PART OF THIS DOCUMENT MAY BE REPRODUCED, STORED IN A RETRIEVAL SYSTEM, OR TRANSMITTED IN ANY FORM OR BY ANY MEANS, ELECTRONIC, MECHANICAL, PHOTOCOPYING, RECORDING OR OTHERWISE WITHOUT THE PRIOR WRITTEN PERMISSION OF BEALS AND THOMAS, INC. EXCEPT THAT ANY REGULATORY AUTHORITY MAY REPRODUCE AND TRANSMIT COPIES AS REQUIRED IN CONNECTION WITH PERFORMANCE OF OFFICIAL BUSINESS UNDER ITS JURISDICTION. ANY MODIFICATIONS TO THIS DOCUMENT WITHOUT THE WRITTEN PERMISSION OF BEALS AND THOMAS, INC. SHALL RENDER IT INVALID AND UNUSABLE.

PREPARED FOR:

DW NP PROPERTY, LLC

One Kendall Square
Suite B3201
Cambridge, MA 012139

LOCUS MAP
SCALE: N.T.S.



COPYRIGHT (C) BY BEALS AND THOMAS, INC. ALL RIGHTS RESERVED.

PREPARED BY:



BEALS AND THOMAS, INC.
Reservoir Corporate Center
144 Turnpike Road
Southborough, Massachusetts 01772-2104
T 508.366.0560 | www.btiweb.com

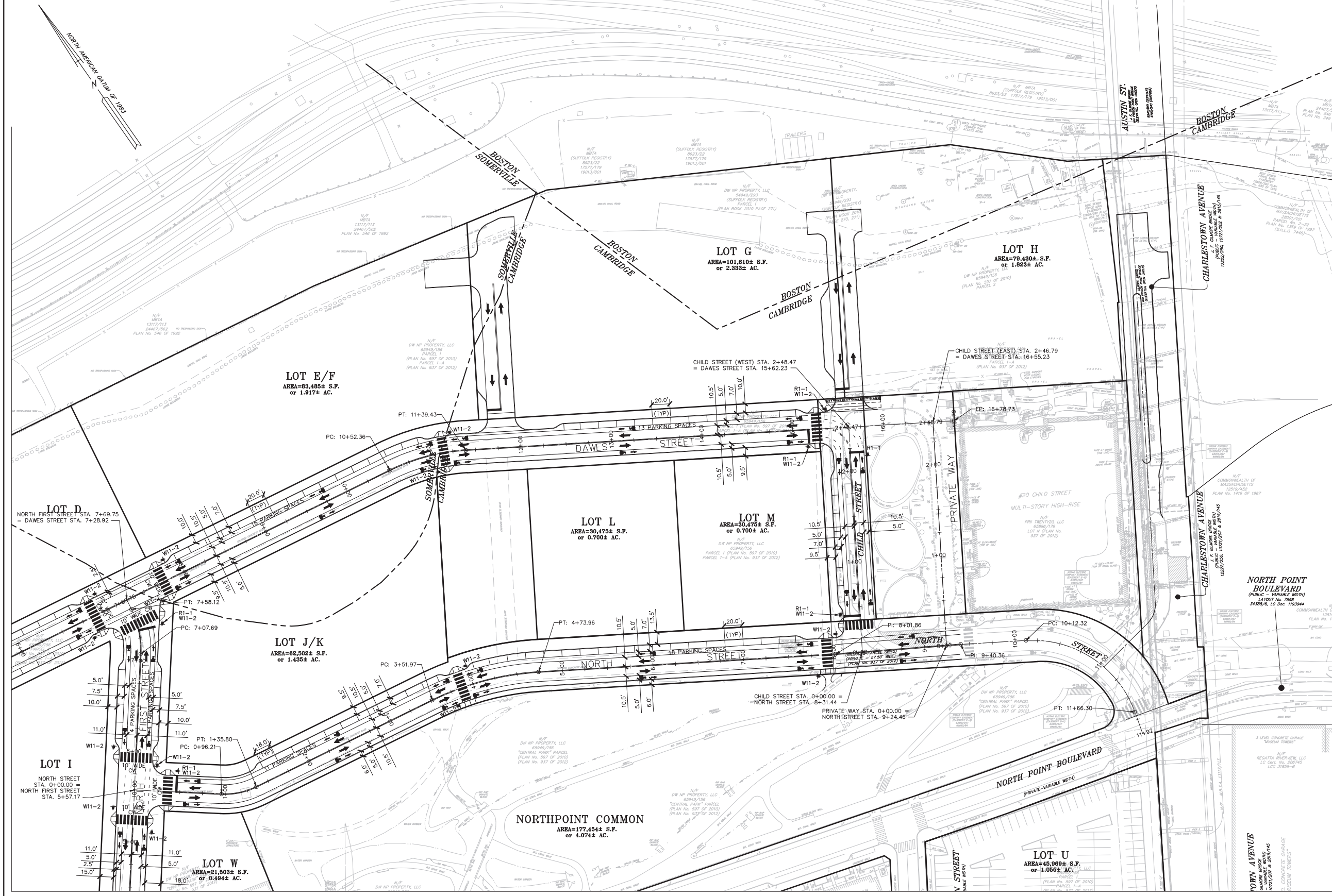
5			
4			
3			
2			
1			
0	04/05/2016 SPECIAL PERMIT AMENDMENT #6		
	ISSUE DATE DESCRIPTION		
DES	DWN	CHK'D	APP'D

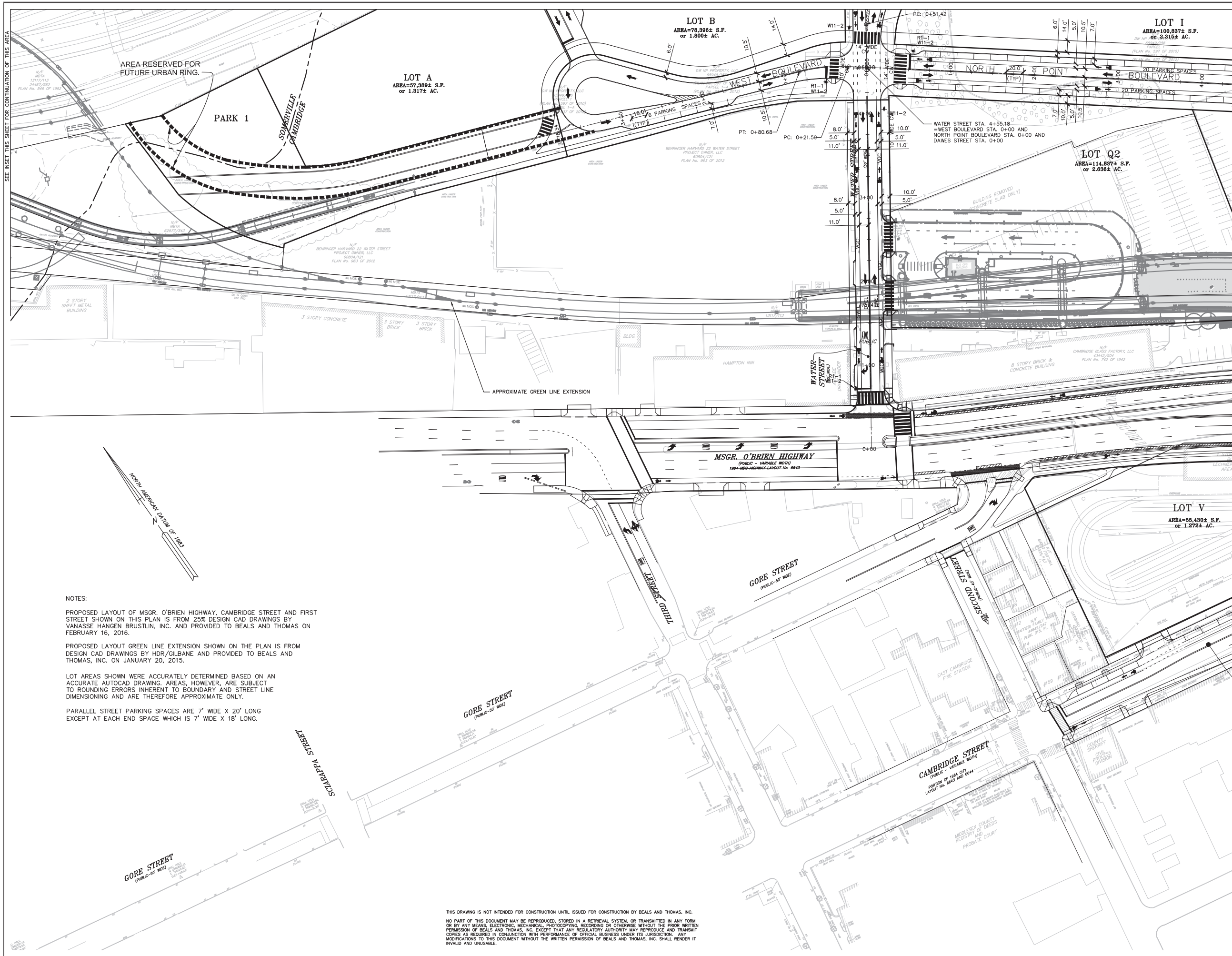
PROJECT:
**NORTH POINT
IN CAMBRIDGE AND
SOMERVILLE, MA
(MIDDLESEX COUNTY)
AND BOSTON, MA
(SUFFOLK COUNTY)**

SCALE: 1" = 40' DATE: APRIL 5, 2016

**QUAD 2
ROADWAY NETWORK
SCHEMATIC PLANS**

B+T JOB NO. 2084.02
B+T PLAN NO. 208402P235A-003
Exhibit J
3





SEE INSET THIS SHEET FOR CONTINUATION OF THIS AREA

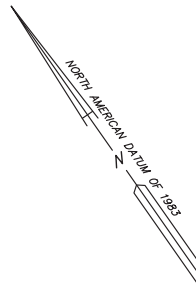
NOTES:

PROPOSED LAYOUT OF MSGR. O'BRIEN HIGHWAY, CAMBRIDGE STREET AND FIRST STREET SHOWN ON THIS PLAN IS FROM 25% DESIGN CAD DRAWINGS BY VANASSE HANGEN BRUSTLIN, INC. AND PROVIDED TO BEALS AND THOMAS ON FEBRUARY 16, 2016.

PROPOSED LAYOUT GREEN LINE EXTENSION SHOWN ON THE PLAN IS FROM DESIGN CAD DRAWINGS BY HDR/GILBANE AND PROVIDED TO BEALS AND THOMAS, INC. ON JANUARY 20, 2015.

LOT AREAS SHOWN WERE ACCURATELY DETERMINED BASED ON AN ACCURATE AUTOCAD DRAWING. AREAS, HOWEVER, ARE SUBJECT TO ROUNDING ERRORS INHERENT TO BOUNDARY AND STREET LINE DIMENSIONING AND ARE THEREFORE APPROXIMATE ONLY.

PARALLEL STREET PARKING SPACES ARE 7' WIDE X 20' LONG EXCEPT AT EACH END SPACE WHICH IS 7' WIDE X 18' LONG.

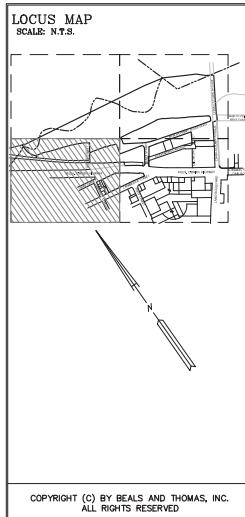


THIS DRAWING IS NOT INTENDED FOR CONSTRUCTION UNTIL ISSUED FOR CONSTRUCTION BY BEALS AND THOMAS, INC. NO PART OF THIS DOCUMENT MAY BE REPRODUCED, STORED IN A RETRIEVAL SYSTEM, OR TRANSMITTED IN ANY FORM OR BY ANY MEANS, ELECTRONIC, MECHANICAL, PHOTOCOPIING, RECORDING OR OTHERWISE WITHOUT THE PRIOR WRITTEN PERMISSION OF BEALS AND THOMAS, INC. EXCEPT THAT ANY REGULATORY AUTHORITY MAY REPRODUCE AND TRANSMIT COPIES AS REQUIRED IN CONJUNCTION WITH PERFORMANCE OF OFFICIAL BUSINESS UNDER ITS JURISDICTION. ANY MODIFICATIONS TO THIS DOCUMENT WITHOUT THE WRITTEN PERMISSION OF BEALS AND THOMAS, INC. SHALL RENDER IT INVALID AND UNSALABLE.

PREPARED FOR:

DW NP PROPERTY, LLC

One Kendall Square
Suite B3201
Cambridge, MA 012139



PREPARED BY:

BEALS + THOMAS
Civil Engineers + Landscape Architects +
Land Surveyors + Planners +
Environmental Specialists

BEALS AND THOMAS, INC.
Reservoir Corporate Center
144 Turnpike Road
Southborough, Massachusetts 01772-2104
T 508.366.0560 | www.btiweb.com

5			
4			
3			
2			
1			
0	04/05/2016 SPECIAL PERMIT AMENDMENT #6		
ISSUE DATE	DESCRIPTION		
DES	DWN	CHK'D	APP'D

PROJECT:

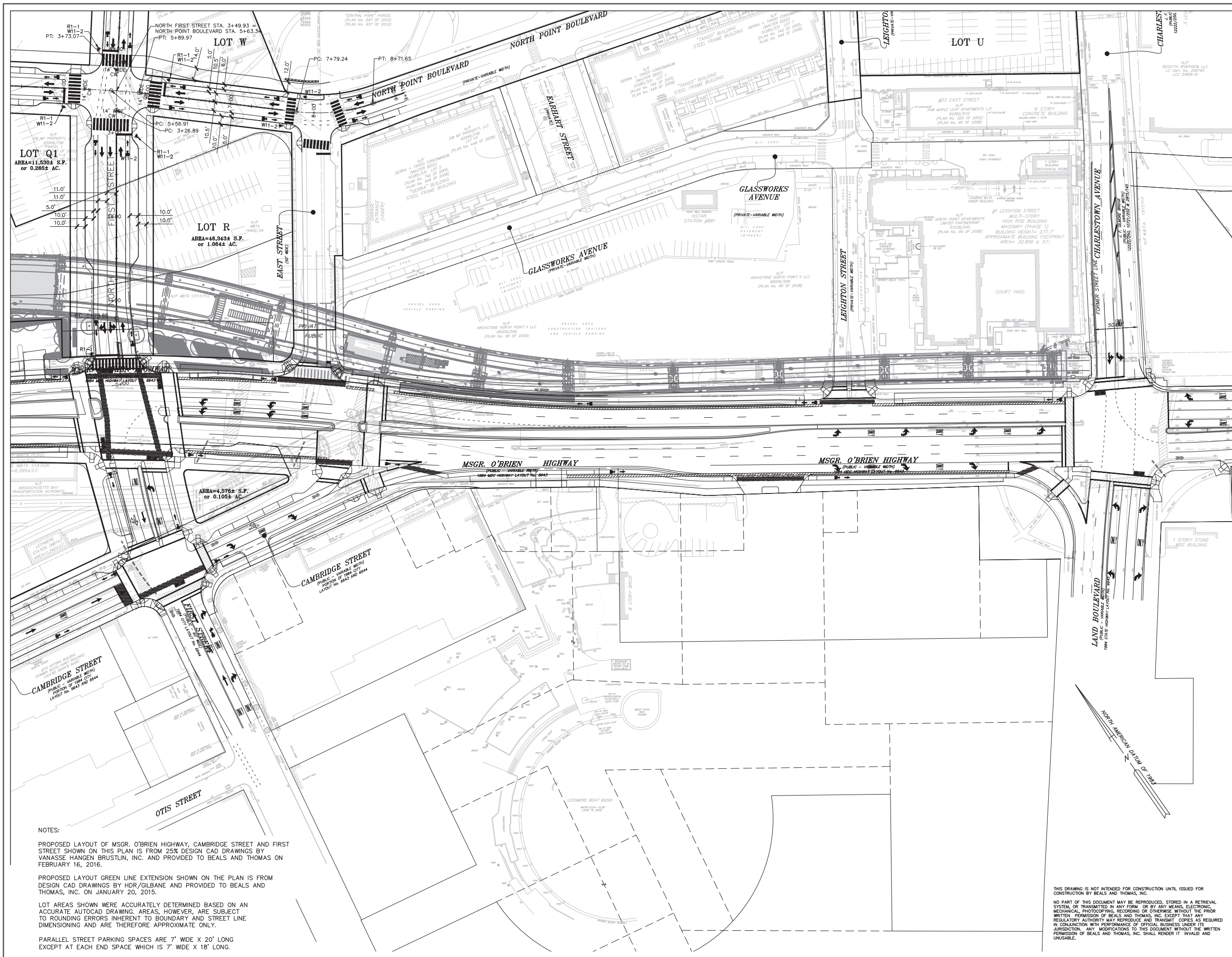
**NORTH POINT
IN CAMBRIDGE AND
SOMERVILLE, MA
(MIDDLESEX COUNTY)
AND BOSTON, MA
(SUFFOLK COUNTY)**

SCALE: 1" = 40' DATE: APRIL 5, 2016

**QUAD 3
ROADWAY NETWORK
SCHEMATIC PLANS**

B+T JOB NO. 2084.02
B+T PLAN NO. 208402P235A-004

**Exhibit J
4**



NOTES:

PROPOSED LAYOUT OF MSGR. O'BRIEN HIGHWAY, CAMBRIDGE STREET AND FIRST STREET SHOWN ON THIS PLAN IS FROM 25% DESIGN CAD DRAWINGS BY VANASSE HANGEN BRUSTLIN, INC. AND PROVIDED TO BEALS AND THOMAS ON FEBRUARY 16, 2016.

PROPOSED LAYOUT GREEN LINE EXTENSION SHOWN ON THE PLAN IS FROM DESIGN CAD DRAWINGS BY HDR/GILBANE AND PROVIDED TO BEALS AND THOMAS, INC. ON JANUARY 20, 2015.

LOT AREAS SHOWN WERE ACCURATELY DETERMINED BASED ON AN ACCURATE AUTOCAD DRAWING. AREAS, HOWEVER, ARE SUBJECT TO ROUNDING ERRORS INHERENT TO BOUNDARY AND STREET LINE DIMENSIONING AND ARE THEREFORE APPROXIMATE ONLY.

PARALLEL STREET PARKING SPACES ARE 7' WIDE X 20' LONG EXCEPT AT EACH END SPACE WHICH IS 7' WIDE X 18' LONG.

PREPARED FOR:

DW NP PROPERTY, LLC

One Kendall Square
Suite B3201
Cambridge, MA 02139

LOCUS MAP
SCALE: N.T.S.

COPYRIGHT (C) BY BEALS AND THOMAS, INC. ALL RIGHTS RESERVED.

PREPARED BY:

BEALS + THOMAS
Civil Engineers + Landscape Architects +
Land Surveyors + Planners +
Environmental Specialists

BEALS AND THOMAS, INC.
Reservoir Corporate Center
144 Turnpike Road
Southborough, Massachusetts 01772-2104
T 508.366.0560 | www.btiweb.com

5	
4	
3	
2	
1	
0	04/05/2016 SPECIAL PERMIT AMENDMENT #6
ISSUE DATE	DESCRIPTION
DES	DWN
CHK'D	APP'D

PROJECT:

**NORTH POINT
IN CAMBRIDGE AND
SOMERVILLE, MA
(MIDDLESEX COUNTY)
AND BOSTON, MA
(SUFFOLK COUNTY)**

SCALE: 1" = 40' DATE: APRIL 5, 2016

**QUAD 4
ROADWAY NETWORK
SCHEMATIC PLANS**

B+T JOB NO. 2084.02
B+T PLAN NO. 208402P235A-005

Exhibit J

5

THIS DRAWING IS NOT INTENDED FOR CONSTRUCTION UNTIL ISSUED FOR CONSTRUCTION BY BEALS AND THOMAS, INC.

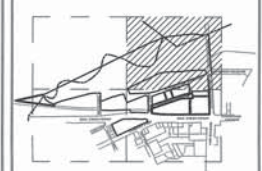
NO PART OF THIS DOCUMENT MAY BE REPRODUCED, STORED IN A RETRIEVAL SYSTEM, OR TRANSMITTED IN ANY FORM OR BY ANY MEANS, ELECTRONIC, MECHANICAL, PHOTOCOPYING, RECORDING OR OTHERWISE, WITHOUT THE PRIOR WRITTEN PERMISSION OF BEALS AND THOMAS, INC. EXCEPT THAT ANY REGULATORY AUTHORITY MAY REPRODUCE AND TRANSMIT COPIES AS REQUIRED IN CONJUNCTION WITH PERFORMANCE OF OFFICIAL BUSINESS UNDER ITS JURISDICTION. ANY MODIFICATIONS TO THIS DOCUMENT WITHOUT THE WRITTEN PERMISSION OF BEALS AND THOMAS, INC. SHALL RENDER IT INVALID AND UNUSABLE.

PREPARED FOR:

DW NP PROPERTY, LLC

One Kendall Square
Suite B3201
Cambridge, MA 02139

KEY PLAN
NOT TO SCALE



TOPOGRAPHIC DETAIL AND ELEVATIONS SHOWN ON THIS SHEET IN THE AREA OF THE J.F. GLIMORE BRIDGE ARE FEATURES FOUND BENEATH THE BRIDGE STRUCTURE. FOR TOPOGRAPHIC DETAIL AND ELEVATIONS ON THE SURFACE OF THE BRIDGE SEE SHEET TP-5.

COPYRIGHT (C) BY BEALS AND THOMAS, INC.
ALL RIGHTS RESERVED



BEALS AND THOMAS, INC.
Reservoir Corporate Center
144 Turnpike Road
Southborough, Massachusetts 01772-2104
T 508.366.0560 | www.bealsandthomas.com



5			
4			
3			
2			
1			
0	03/31/2016 SPECIAL PERMIT AMENDMENT 6		
	ISSUE DATE DESCRIPTION		
DES	DWN	CHK'D	APP'D

PROJECT:
NORTHPOINT ROADWAY AND INFRASTRUCTURE IN CAMBRIDGE AND SOMERVILLE, MA (MIDDLESEX COUNTY) AND BOSTON, MA (SUFFOLK COUNTY)

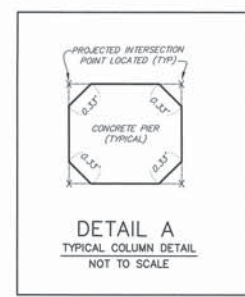
SCALE: 1" = 40' DATE: MARCH 31, 2016

INTERIM TOPOGRAPHIC PLAN

NOTE: THERE IS AN ON-GOING EARTH REMOVING RELATED TO SURCHARGING ROADWAYS AND DEVELOPMENT AREAS.

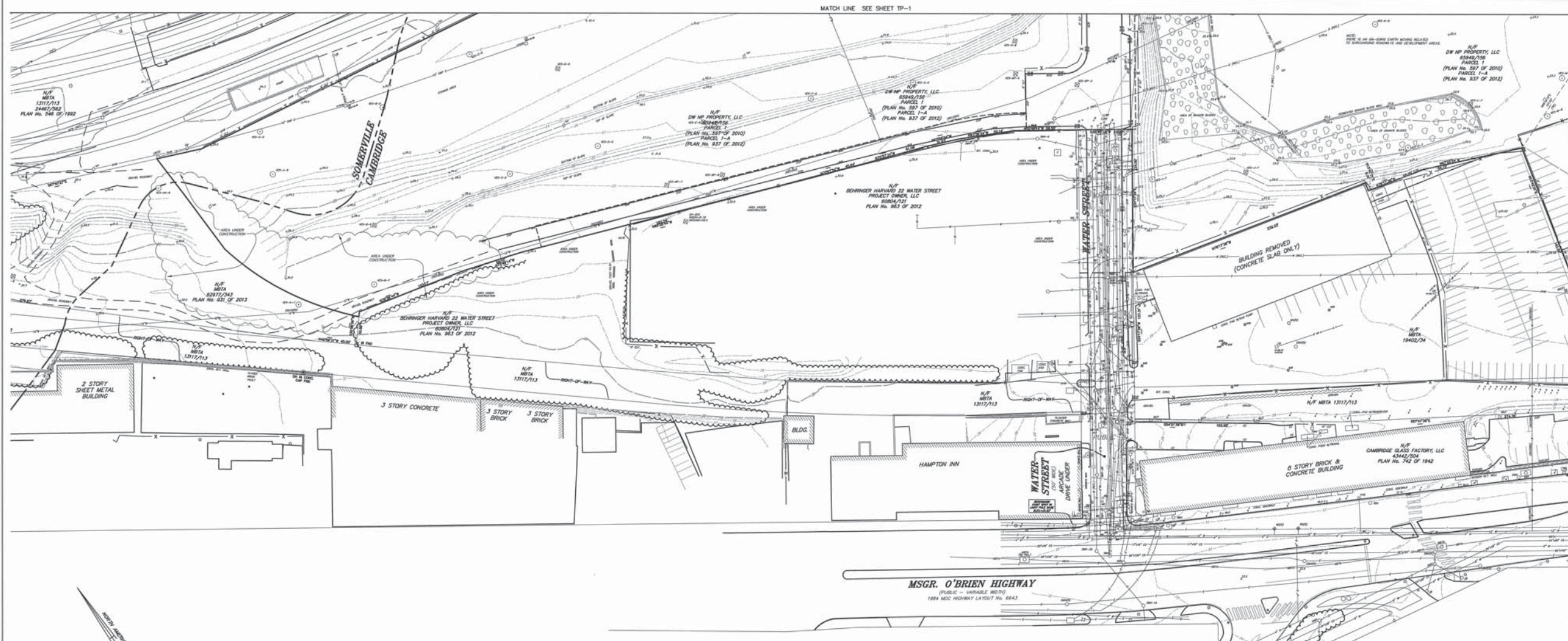
B+T JOB NO. 2084.02
B+T PLAN NO. 208402P127A-002

Exhibit K
TP-2



MATCH LINE SEE SHEET TP-1

MATCH LINE SEE SHEET TP-4



PREPARED FOR:

DW NP PROPERTY, LLC

One Kendall Square
Suite B3201
Cambridge, MA 02139



COPYRIGHT (C) BY BEALS AND THOMAS, INC.
ALL RIGHTS RESERVED

BEALS + THOMAS
Civil Engineers + Landscape Architects +
Land Surveyors + Planners +
Environmental Specialists

BEALS AND THOMAS, INC.
Reservoir Corporate Center
144 Turnpike Road
Southborough, Massachusetts 01772-2104
T 508.366.0560 | www.bealsandthomas.com

3/31/16

5	
4	
3	
2	
1	
0	02/31/2016 SPECIAL PERMIT AMENDMENT 6
ISSUE DATE	DESCRIPTION
DES	DWN
CHK'D	APP'D

PROJECT:

**NORTHPOINT ROADWAY
AND INFRASTRUCTURE
IN CAMBRIDGE AND
SOMERVILLE, MA
(MIDDLESEX COUNTY)
AND BOSTON, MA
(SUFFOLK COUNTY)**

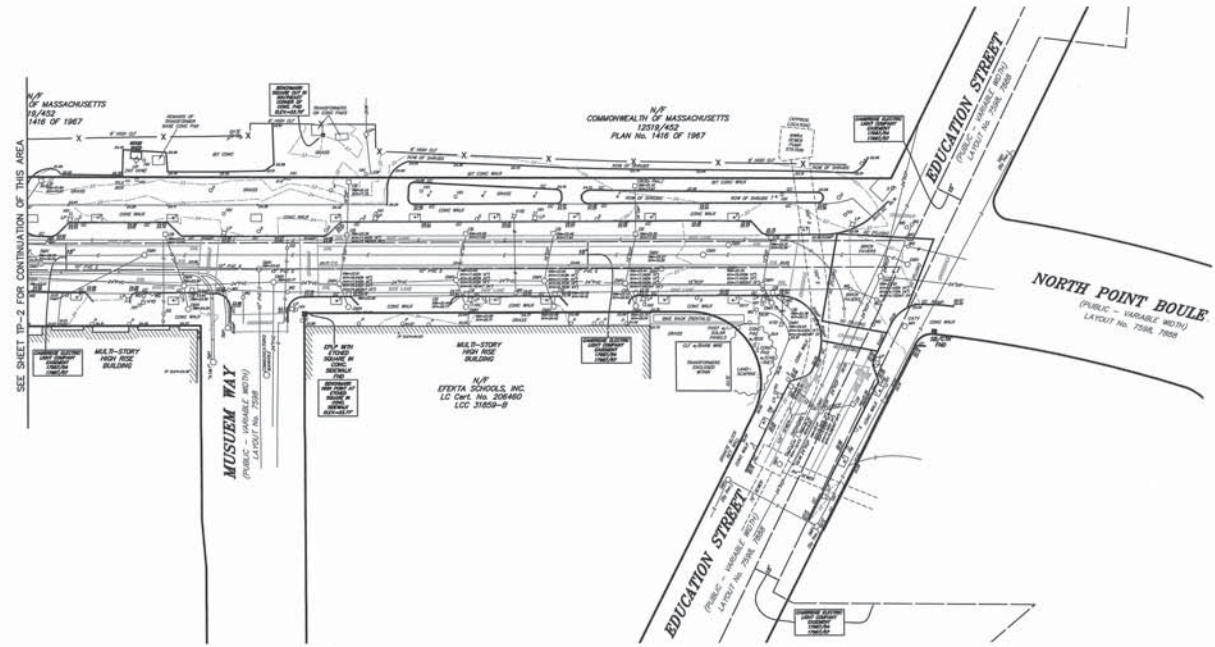
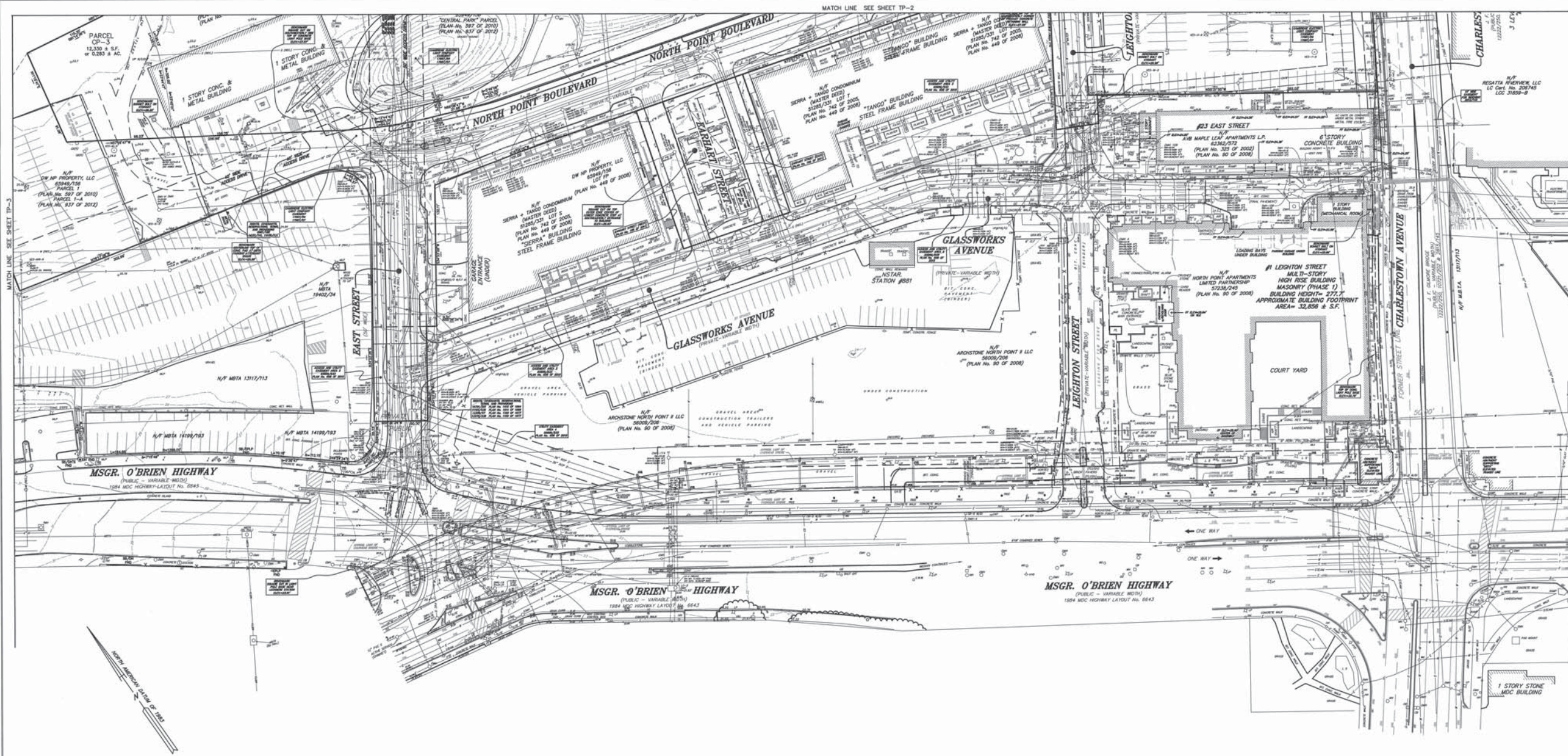
SCALE: 1" = 40' DATE: MARCH 31, 2016

**INTERIM
TOPOGRAPHIC PLAN**

NOTE: THERE IS AN ON-GOING EARTH
REMOVING RELATED TO SURCHARGING
ROADWAYS AND DEVELOPMENT AREAS.

B+T JOB NO. 2084.02
B+T PLAN NO.
208402P127A-003

Exhibit K
TP-3

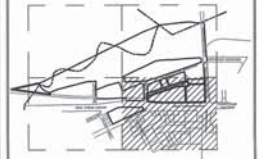


PREPARED FOR:

DW NP PROPERTY, LLC

One Kendall Square
Suite B3201
Cambridge, MA 02139

KEY PLAN
NOT TO SCALE



COPYRIGHT (C) BY BEALS AND THOMAS, INC.
ALL RIGHTS RESERVED

BEALS + THOMAS
Civil Engineers + Landscape Architects +
Land Surveyors + Planners +
Environmental Specialists

BEALS AND THOMAS, INC.
Reservoir Corporate Center
144 Turnpike Road
Southborough, Massachusetts 01772-2104
T 508.366.0560 | www.bealsandthomas.com



5			
4			
3			
2			
1			
0	03/31/2016 SPECIAL PERMIT AMENDMENT 6		
	ISSUE DATE DESCRIPTION		
DES	DWN	CHK'D	APP'D

PROJECT:
NORTHPOINT ROADWAY AND INFRASTRUCTURE IN CAMBRIDGE AND SOMERVILLE, MA (MIDDLESEX COUNTY) AND BOSTON, MA (SUFFOLK COUNTY)

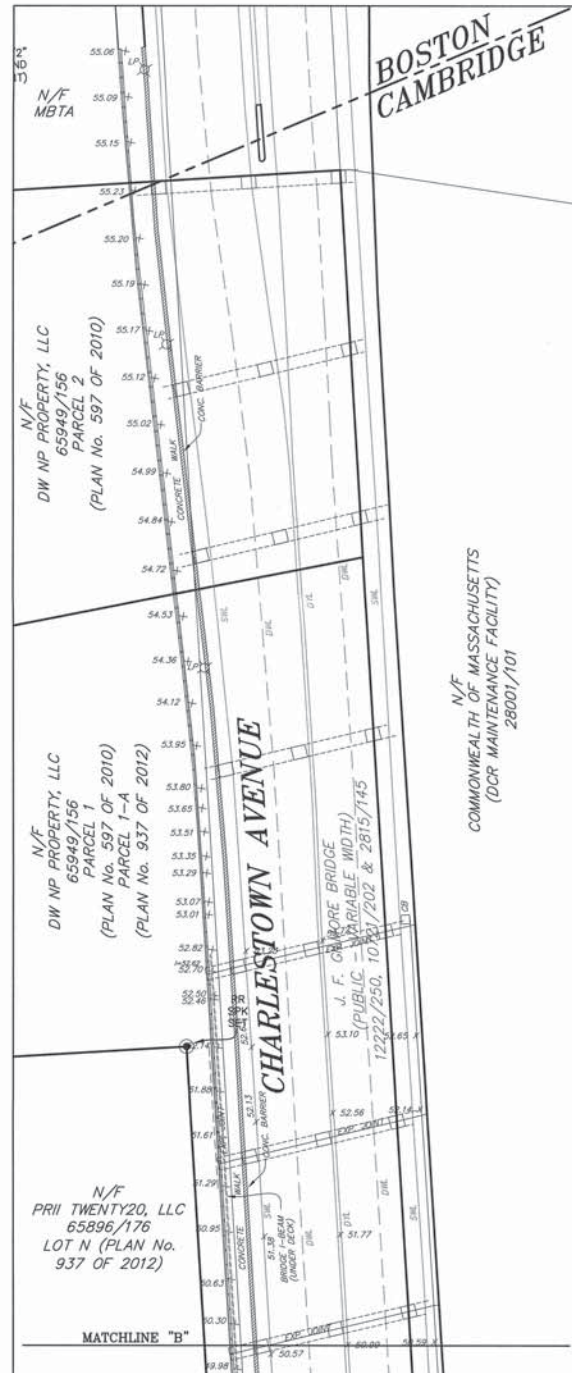
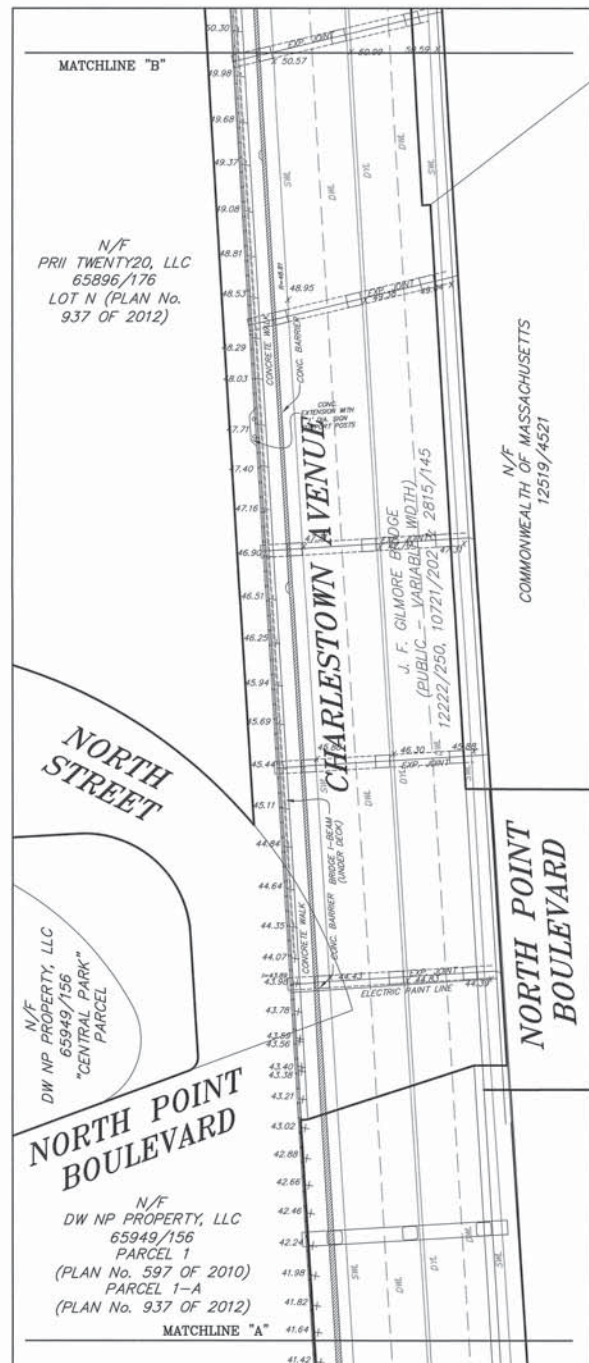
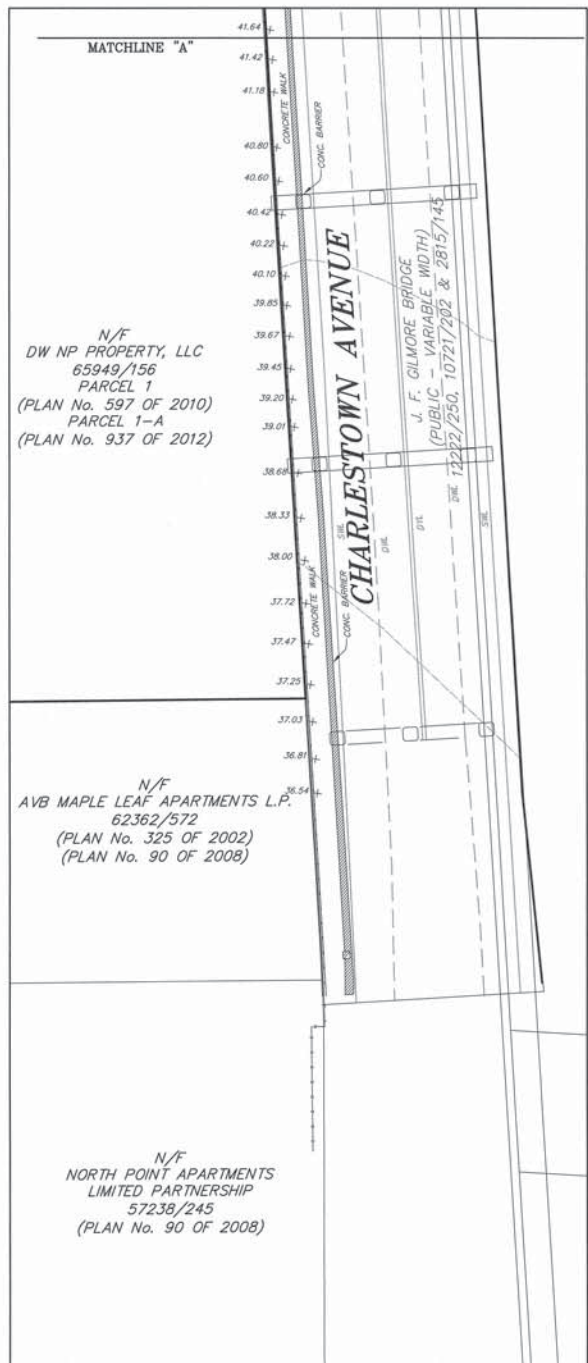
SCALE: 1" = 40' DATE: MARCH 31, 2016

INTERIM TOPOGRAPHIC PLAN

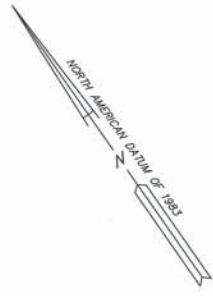
NOTE: THERE IS AN ON-GOING EARTH REMOVING RELATED TO SURCHARGING ROADWAYS AND DEVELOPMENT AREAS.

B+T JOB NO. 2084.02
B+T PLAN NO. 208402P127A-004

Exhibit K
TP-4



CHARLESTOWN AVENUE (GILMORE BRIDGE) DETAIL AND SPOT GRADES ON ELEVATED BRIDGE ONLY
(DETAIL BENEATH BRIDGE NOT SHOWN)



PREPARED FOR:

**DW NP
PROPERTY, LLC**

One Kendall Square
Suite B3201
Cambridge, MA 02139

KEY PLAN
NOT TO SCALE

COPYRIGHT (C) BY BEALS AND THOMAS, INC.
ALL RIGHTS RESERVED

BEALS + THOMAS
Civil Engineers + Landscape Architects +
Land Surveyors + Planners +
Environmental Specialists

BEALS AND THOMAS, INC.
Reservoir Corporate Center
144 Turnpike Road
Southborough, Massachusetts 01772-2104
T 508.366.0560 | www.bealsandthomas.com

5			
4			
3			
2			
1			
0	03/31/2016	SPECIAL PERMIT AMENDMENT 6	
	ISSUE DATE	DESCRIPTION	
DES	DWN	CHK'D	APP'D

PROJECT:

**NORTHPOINT ROADWAY
AND INFRASTRUCTURE
IN CAMBRIDGE AND
SOMERVILLE, MA
(MIDDLESEX COUNTY)
AND BOSTON, MA
(SUFFOLK COUNTY)**

SCALE: 1" = 20' DATE: MARCH 31, 2016



**INTERIM
TOPOGRAPHIC PLAN**

NOTE: THERE IS AN ON-GOING EARTH
REMOVING RELATED TO SURCHARGING
ROADWAYS AND DEVELOPMENT AREAS.

B+T JOB NO. 2084.02
B+T PLAN NO.
208402P127A-005

**Exhibit K
TP-5**

Exhibit L



To: Joseph E. Barr, Director
Cambridge Traffic, Parking and
Transportation Department

Date: April 6, 2016

Memorandum

Project #: 13369.00

From: Susan Sloan-Rossiter, Principal
Meghan Houdlette, P.E.
VHB

Re: NorthPoint Trip Generation - 2016 Parcel Phasing Comparison
Analysis

Summary of Study and Findings

DW NP Property, LLC (DivcoWest), is submitting a Request for a Major Amendment to the Special Permit for the NorthPoint project. This filing is being submitted in accordance with the City of Cambridge, Massachusetts Zoning Ordinance (the "Zoning Ordinance") and the Notice of Decision Amendment to Planned Unit Development (Case No. PB#179 Amendment #3) filed with the City Clerk's Office on November 16, 2012; as amended by Notice of Decision (Case No. PB#179 Amendment #4) and filed with the City Clerk's office on February 13, 2015 and by Notice of Decision (Case No. PB 179 Amendment #5) filed with the City Clerk's Office on July 30, 2015 (together, the "Special Permit").

Since acquiring the property in August, 2015, DivcoWest has been considering ways in which the existing Master Plan can be improved in order to strengthen the public realm features of NorthPoint and accelerate the development schedule. The current Master Plan (as amended in 2015) provides for the construction of approximately 5.2 million square feet (3,060,792 sf of residential space, 2,185,062 sf of commercial space, and eleven (11) acres of open space). The proposed changes included in the amendment application do not include any requests to modify the approved 5.2 million square feet and do not include any requests to modify the breakdown of the approved square footage between residential and commercial uses.

DivcoWest retained VHB to prepare a traffic generation analysis showing the implication of the Major Amendment proposed changes. This memo contains a trip generation analysis comparing the trip generation of the proposed revised Master Plan to the Phase IA, Phase 1B and Full Build trip generation thresholds for the peak hours established in the certified NorthPoint TIS (2002).

The total gross square footage (GSF) of the Master Plan will not change. Additionally, the amount of Residential, Commercial, and Retail GSF will remain as approved in the Special Permit. The traffic volume resulting from the proposed amendments will not exceed the original trip generation thresholds for the peak hours established in the certified NorthPoint TIS (2002).

The specific Major Amendment modifications to the parcel phasing include the following:

- Move Parcel JK and I into Phase 1A
- Include new Parcel W and Parcel Q1 in Phase 1A
- Include a temporary commercial use on Parcel H in Phase 1A
- Move Parcel U to Phase 1B
- Move Parcel H to Phase 1B

This memorandum contains a trip generation analysis comparing the trip generation of the proposed parcel phasing, to the Phase IA, Phase 1B and Full Build trip generation thresholds for the peak hours established in the certified

NorthPoint TIS (2002). This memo also contains a comparison of the proposed parcel phasing to the 2015 Master Plan Update program. Note that the Phase 1B condition is cumulative and includes all buildings to be constructed through the end of Phase 1B, including all Phase 1A buildings. The trip generation analysis undertaken in this memorandum demonstrates that the trip generation for the proposed parcel phasing is less than the trip generation thresholds for the peak hours established in the certified NorthPoint TIS, as shown in Table 1. The trip generation analysis in this memorandum utilizes the same assumptions that were used in the trip generation analysis approved by the City for Special Permit Amendment #4 (the "2014 Master Plan Update") and utilized for Special Permit Amendment #5 (the "2015 Master Plan Update").

The vehicle trip generation analysis for the amendment proposed parcel phasing in comparison to the certified TIS and the 2015 Master Plan Update for Daily, AM peak hour and PM peak hour conditions in the Full Build, Phase 1 A and Phase 1B are shown in Table 1. Compared to the certified TIS baseline, on which the NorthPoint traffic mitigation plan is based, the vehicle trips generated for the proposed parcel phasing are less than the certified TIS threshold trips in all of the Full Build, Phase 1A and Phase 1B conditions.

Compared to the TIS, the 2016 Parcel Phasing vehicle trip generation is lower for the Phase 1A, Phase 1B and Full Build Daily, AM peak hour and PM peak hour. The proposed phasing vehicle trip generation is higher in Phase 1A and Phase 1B in comparison to the 2015 Master Plan Update, reflecting the acceleration of the development schedule but still lower than the TIS projections.

Table 1 - Comparison of TIS, 2015 Master Plan Update, and 2016 Major Amendment Vehicle Trip Generation*

	<u>TIS</u>			<u>2015 Master Plan Update</u>			<u>2016 Major Amendment</u>		
	Daily	Morning Peak	Evening Peak	Daily	Morning Peak	Evening Peak	Daily	Morning Peak	Evening Peak
	Total	Total	Total	Total	Total	Total	Total	Total	Total
Phase 1A	5,430	720	760	3,979	405	422	5,188	450	542
Phase 1B	10,400	1,260	1,405	9,698	992	1,089	10,224	1,122	1,222
Full Build	16,015	1,695	1,840	15,992	1,429	1,754	15,980	1,436	1,750

*The Phase 1B condition is cumulative and includes all buildings to be constructed through the end of Phase 1B, including all Phase 1A buildings. The Full Build condition includes all buildings to be constructed as part of the NorthPoint project.

Trip Generation Analysis Methodology

Table 2 compares the NorthPoint development program studied as part of the certified TIS to the original NorthPoint Master Plan, the 2015 Master Plan Update and the 2016 Master Plan program. The overall NorthPoint Master Plan development program size and land-use allocation does not change from the original NorthPoint approved development program under this Major Amendment request. The 2016 Master Plan program allocation of residential

and commercial square footage is also consistent with the 2012 Master Plan. Note that the development program analyzed in the TIS was approximately 294,146 gsf larger (264,208 gsf of residential program and 29,938 gsf of commercial program) than the current NorthPoint development program. The residential square footage has been reduced while adding additional units at a smaller square footage/unit ratio. The total amount and allocation of development program square footage between residential and commercial uses does not change from the originally approved NorthPoint Master Plan.

Table 2 - NorthPoint Program Comparison

Full Build Program	TIS (GSF)	Original NorthPoint Master Plan	2015 Master Plan Program (GSF)	2016 Master Plan Program(GSF)
Residential	3,325,000	3,060,792	3,077,254	3,060,792
Commercial	<u>2,215,000</u>	<u>2,185,062</u>	<u>2,168,600</u>	<u>2,185,062</u>
Total	5,540,000	5,245,854	5,245,854	5,245,854

The development program assumed for the trip generation analysis of the proposed parcel phasing program is shown in Table 3, in comparison to the development program in the 2015 Master Plan Update and certified TIS. The development program for the proposed parcel phasing program reflects Parcels JK and Parcel EF as lab buildings.

Table 3 - TIS, 2015 Master Plan Update, and Proposed Parcel Phasing Program Comparison

Full Build Program	TIS (GSF)	2015 Master Plan Update (GSF)	2016 Parcel Phasing (GSF)
Office	1,500,000	1,142,081	1,060,000
Lab	640,000	576,519	725,000
Ancillary Retail	75,000	175,000	175,000
Retail	-	75,000	75,000
Grocery	-	50,000	50,000
Hotel	90,000 (90 keys)	150,000 (150 keys)	100,062 (100 keys)
<u>Residential</u>	<u>3,235,000 (2,790 units)</u>	<u>3,077,254 (3,211 units)</u>	<u>3,060,792 (3,177 units)</u>
Total	5,540,000	5,245,854	5,245,854

In order to confirm that the trip generation for the proposed parcel phasing is less than or equal to the initial trip generation calculated for Phase 1A, Phase 1B and the Full Build program in the certified TIS, a trip generation analysis was conducted for comparison purposes. Note that the same technical assumptions for the transportation analysis used for the 2014 Master Plan Update and the 2015 Master Plan Update, are used in this comparative trip generation analysis.

The ITE Land Use Codes from the Trip Generation 9th Edition assumed for the potential revised development program trip generation analysis are summarized in Table 4.

Table 4 - ITE Land Use Codes*

Land Use	ITE LUC	Methodology
Office	710	Fitted Curve Equation
Lab	760	Fitted Curve Equation
Ancillary Retail	820	Average Rate
Retail	820	Average Rate
Grocery	850	Average Rate
Hotel	310	Average Rate
Residential	220	Fitted Curve Equation

* VHB Trip Generation Analysis and Shared Parking Study, March 24, 2014

Table 5 - Mode Shares

Land Use	Auto	Source
Office/Lab	40%	Certified NorthPoint TIS
Residential	32%	Kendall Square K2 City Study
Supermarket	50%	Transportation Research Board (TRB) Paper*
Hotel	30%	Hotel PTDM Reports and Traffic Studies
Ancillary Retail	10%	Certified NorthPoint TIS
General Retail	31%	Kendall Square K2 City Study

* Food Shopping in the Urban Environment: Parking Supply, Destination Choice and Mode Choice (TRB 2011 Annual Meeting, Maley and Weinberger – Appendix Exhibit B), VHB Trip Generation Analysis and Shared Parking Study, March 24, 2014

Table 6 presents the TIS, 2015 Master Plan Update and Proposed Parcel Phasing Plan by square footage and land-use type used in the trip generation analysis for each development phase.

Table 6 - TIS, 2015 Master Plan Update and Proposed Parcel Phasing Program Square Footage Comparison

	<u>TIS</u>						<u>2015 Master Plan Update</u>						<u>2016 Parcel Phasing</u>					
	Residential	Office	Lab	Retail	Hotel	Total	Residential	Office	Lab	Retail	Hotel	Total	Residential	Office	Lab	Retail	Hotel	Total
Phase 1A	480,000	1,063,000	-	-	-	1,543,000	1,224,992	320,000	-	25,000	-	1,569,992	1,580,992	30,000	350,000	104,000	0	2,070,992
Phase 1B	1,211,000	621,000	-	-	-	1,832,000	680,000	433,481	576,519	105,000	150,000	1,945,000	348,000	1,000,000	375,000	70,000	0	1,808,000
Phase 2	1,544,000	-	456,000	75,000	90,000	2,165,000	1,172,262	388,600	-	170,000	-	1,730,862	1,131,800	30,000	0	126,000	100,062	1,366,862
Total	3,235,000	1,684,000	456,000	75,000	90,000	5,540,000	3,077,254	1,142,081	576,519	300,000	150,000	5,245,854	3,060,792	1,060,000	725,000	300,000	100,062	5,245,854

Table 7 presents the additional delineation of the Inbound and Outbound trip movements for each development phase, for comparison purposes. The original benefit of the NorthPoint mixed-use development program having a balance of inbound and outbound trips has maintained.

Table 7 – TIS, 2015 Master Plan Update and Proposed Parcel Phasing Program Trip Generation (Inbound and Outbound) Comparison

	<u>TIS</u>							<u>2015 Master Plan Update</u>						<u>2016 Parcel Phasing</u>							
	Daily	Morning Peak			Evening Peak			Daily	Morning Peak			Evening Peak			Daily	Morning Peak			Evening Peak		
	Total	In	Out	Total	In	Out	Total	Total	In	Out	Total	In	Out	Total	Total	In	Out	Total	In	Out	Total
Phase 1A	5,430	555	165	720	190	570	760	3,979	214	191	405	189	233	422	5,188	214	236	450	245	297	542
Phase 1B	10,400	840	420	1,260	450	955	1,405	9,698	631	361	992	396	693	1,089	10,224	755	366	1,122	403	819	1,222
Full Build	16,015	945	750	1,695	735	1,105	1,840	15,992	863	566	1,429	704	1,050	1,754	15,980	873	563	1,436	697	1,054	1,750

Exhibit M



To: Joseph Barr, Director
Adam Shulman, Sr. Planner
City of Cambridge
Traffic, Parking & Transportation

Date: April 6, 2016

Memorandum

Project #: 13369.00

From: Susan Sloan-Rossiter, Principal
Ellen Donohoe, PE

Re: NorthPoint Internal Roadway Layout – Master Plan Revisions

DW NP Property, LLC (DivcoWest) acquired the NorthPoint property in August 2015. For the past several months, the new ownership team has been evaluating the approved development proposal, considering ways in which the existing Master Plan can be improved in order to strengthen the public realm features of NorthPoint and the development program can be accelerated. Some of the improvements have been through minor adjustments and re-alignments of internal roadways with the intention to improve the overall public realm experience and safety for pedestrians and bicyclists. The modified internal roadway layout improves the connectivity of the roadway network for vehicles, pedestrians and cyclists.

DivcoWest requested VHB to conduct a traffic assessment of the internal roadway modifications prepared by the project team civil engineer Beals & Thomas. The 40 scale internal roadway plan to be submitted as part of a major amendment to the current Master Plan Special Permit, maintains City of Cambridge and Somerville roadway design standards. Note that most of the roadway configurations are generally maintained from the current Master Plan except for the following modifications:

- Shifting of NorthPoint Blvd to align with the West Boulevard/Water Street intersection,
- Minor re-alignment of North First Street between NorthPoint Blvd and Dawes Street,
- Minor easterly shift of West Blvd turnaround adjacent to Parcel A,
- Minor re-alignment of the multi-use path to account for NorthPoint Boulevard shift
- Elimination of the one block street segment (Baldwin Street) between Parcel JK and Parcel L.

Traffic Operational Assessment of Proposed Roadway Modifications

VHB considers each of these modifications to be improvements to the current Master Plan internal roadway network for the following reasons:

- NorthPoint Boulevard shift north creates a perpendicular 4 legged intersections versus two off-set T-intersections on Water Street providing improved vehicle, pedestrian and bicycle crossings.

99 High Street
Boston, MA 02110-2354
P 617.728.7777

- Continuation of the multi-use path along the north side of NorthPoint Blvd provides direct single movement crossings at North First Street and Water Street and does not require multiple crossings.
- Increased segment length of North First Street by approx. 80 feet, between O'Brien Hwy and NorthPoint Blvd, provides more queue and curb space.
- Increased segment length of Water Street by approx. 100 feet, between Lechmere Station Intersection and NorthPoint Blvd, provides more queue and curb space.
- Increased segment length of Water Street improves bus visibility at Lechmere Station driveway.
- North First Street straight alignment reduces possible sight line impacts at intersections and driveways.
- Relocation of West Blvd turnaround adjacent to Parcel A reduces paved area.
- Elimination of the one block roadway segment between Parcels JK and L should not result in traffic deficiencies or poor operations.
- The proposed street modifications result in a reduction of 940 lf of paved street equating to a reduction of over 1 acre of impervious surface (46,170 sf).

Traffic Operation Analysis of Roadway Elimination

As part of the Planning Board Decision, PB#179 Amendment #3, procedures for modifications of the Master Plan are described in Section 12, with modifications to "streets" being included in Section 12b. As stated "The elimination of any street segment shown on the Master Plan shall only be permitted as a Major Amendment to the Permit with the exception of streets which are *one block in length*, which may be relocated or eliminated if specifically approved by the Planning Board as part of the final design approval after having been reviewed and approved by City staff."

At the request of DivcoWest, VHB conducted an analysis of traffic operations on the internal NorthPoint roadways to determine if the one block street segment between Parcel JK and Parcel L could be removed from the roadway network. Peak Hour traffic volumes provided in the NorthPoint Traffic Impact Study (TIS) were used as the baseline for this analysis. In addition the following assumptions were made:

- All traffic currently on North Street would be relocated to Dawes Street as a worst-case scenario;
- Pedestrian volumes would total approximately 100 crossings per hour; and
- Each intersection approach would consist of one shared lane.

The internal roadway traffic analysis investigated the morning and evening peak hour roadway volumes. The primary intersections at each end of Dawes Street (to the east and west) will be most impacted by this change. For this reason the following intersections were studied:

- Dawes Street at North First Street

- Dawes Street at North Park

Redistributed volumes for the morning and evening peak periods are shown in the attached Figure 1.

Level of Service

Synchro 8 software was used to model unsignalized level of service (LOS) operations at the study area intersections. LOS is a qualitative measure of control delay at an intersection providing an index to the operational qualities of a roadway or intersection. LOS designations range from A to F, with LOS A representing the best operating conditions and LOS F representing the worst operating conditions. LOS D is typically considered acceptable. Table 1 below presents the level of service delay threshold criteria for unsignalized intersections as defined in the 2010 Highway Capacity Manual (HCM).

Table 1: Level of Service (LOS) Criteria

LOS	Unsignalized Intersection (seconds/vehicle)
LOS A	≤ 10
LOS B	> 10-15
LOS C	> 15-25
LOS D	> 25-35
LOS E	> 35-50
LOS F	> 50

Source: 2010 HCM

The resulting LOS for the resulting redistributed traffic is shown in Table 2.

Table 2: Level of Service Summary – Full Build With Removal of Roadway

	V/C¹	Delay²	LOS³	95th Queue (feet)
<i>AM Peak Hour</i>				
Dawes Street EB T/R	0.17	0.0	-	0
Dawes Street WB L/T	0.13	5.6	A	11
North First Street NB L/R	0.49	19.8	C	66
Dawes Street EB L/R	0.64	24.7	C	109
North Park NB L/T	0.17	6.5	A	16
North Park SB T/R	0.02	0.0	-	0
<i>PM Peak Hour</i>				
Dawes Street EB T/R	0.09	0.0	-	0
Dawes Street WB L/T	0.26	6.3	A	26
North First Street NB L/R	0.48	24.4	C	62
Dawes Street EB L/R	0.54	18.9	C	80
North Park NB L/T	0.17	8.1	A	16
North Park SB T/R	0.10	0.0	-	0

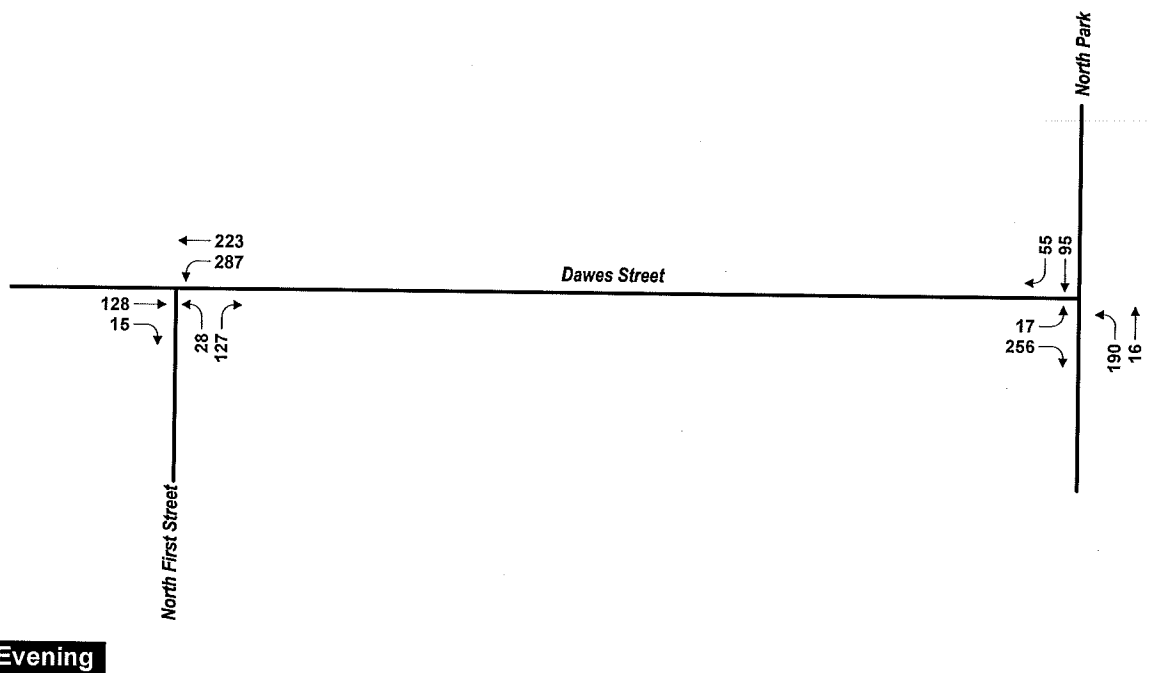
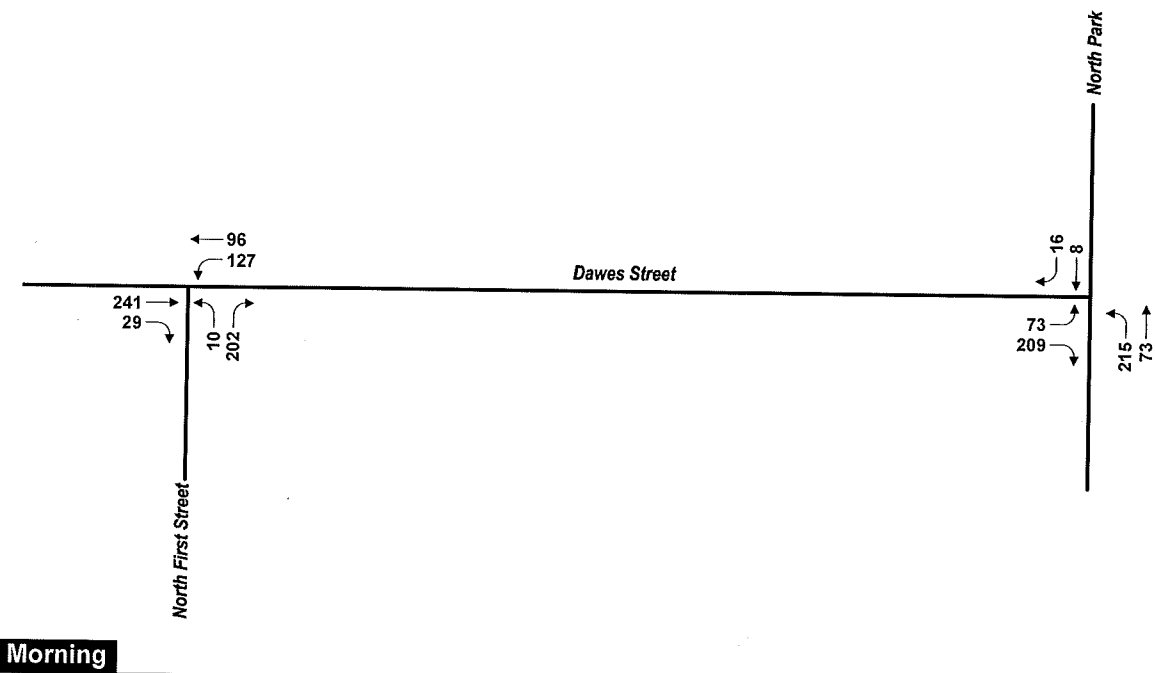
¹V/C – Volume-to-capacity ratio

²Delay – Control delay per vehicle, expressed in seconds per vehicle

³LOS - Level-of-Service

NB = Northbound; SB = Southbound; EB = Eastbound; WB = Westbound

The results indicate a LOS C or better on all intersection approaches at both intersections which is considered acceptable operations. This assumes that a STOP condition is only required on the minor street approaches. The major street (Dawes Street) would remain operating with free-flow traffic operations. With the current volumes the intersections do not meet warrants for an all-way stop condition. In summary, based on the traffic analysis described above, removing the roadway between Parcel JK and Parcel L should not result in a degraded level of traffic operations at nearby intersections.



↑
Not to Scale



Figure 1
Full Build Redistributed Traffic Volumes
North Point

Exhibit N

East Cambridge
ECPT
Planning Team

A Neighborhood Organization for the Betterment of East Cambridge

February 7, 2016

Dear Planning Board,

At our January 27, 2016 ECPT meeting, representatives from Divco presented to the neighborhood their proposed changes to the current Northpoint Special Permit. The ECPT membership discussed the changes after the presentation and unanimously voted to send a letter in support of the straightening of streets, new and aligned open spaces and change of location of two of the approved 200 foot buildings as presented to the ECPT at the January 27th meeting.

We look forward to continuing to hear from Divco as they continue to move forward to implement the Northpoint Special Permit.

Sincerely,



Peter Crawley
President, ECPT

Appendix I: Revised Statistical Summary of the Approved Master Plan

I. Project as a Whole

A. Three City Summary

a. Parcel Area	Total Area in Acres (Square Feet):	45.37 acres (1,976,501 square feet)
b. Floor Area	FAR at North Point:	2.66
	FAR at Lechmere	2.5
	Total GFA	5,245,854 square feet
c. Non-Residential	Maximum FAR	1.10
	Approved GFA	2,185,062 square feet for all non-residential uses
	Retail GFA:	300,000 square feet at North Point Amount TBD at Lechmere
d. Residential	Maximum FAR:	1.55
	GFA:	3,060,792 square feet
e. Open Space	Minimum Public, Green Area or Permeable Open Space Provided:	392,000 square feet
	Other/Common Open Space in Square feet:	TBD
f. Parking Spaces	Maximum Permitted:	3,807 spaces +300 replacement MBTA spaces
	Maximum non-residential:	See Special Permit
	Minimum residential:	0.5-1.0 spaces/unit for each building Average of 0.75/unit for the entire project at full build-out
g. Dwelling Units	Proposed Number:	3,177 units