



# Cambridge Community Meeting

---

June 6th, 2023



TGAS

Historic Cambridge Fire Headquarters





TGAS

Planned Alteration of Fire Headquarters



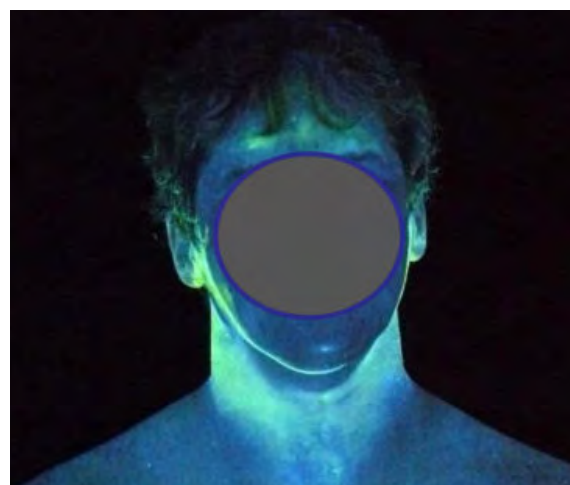


TGAS

Historic Restoration, Gut Renovation, Net Zero Project



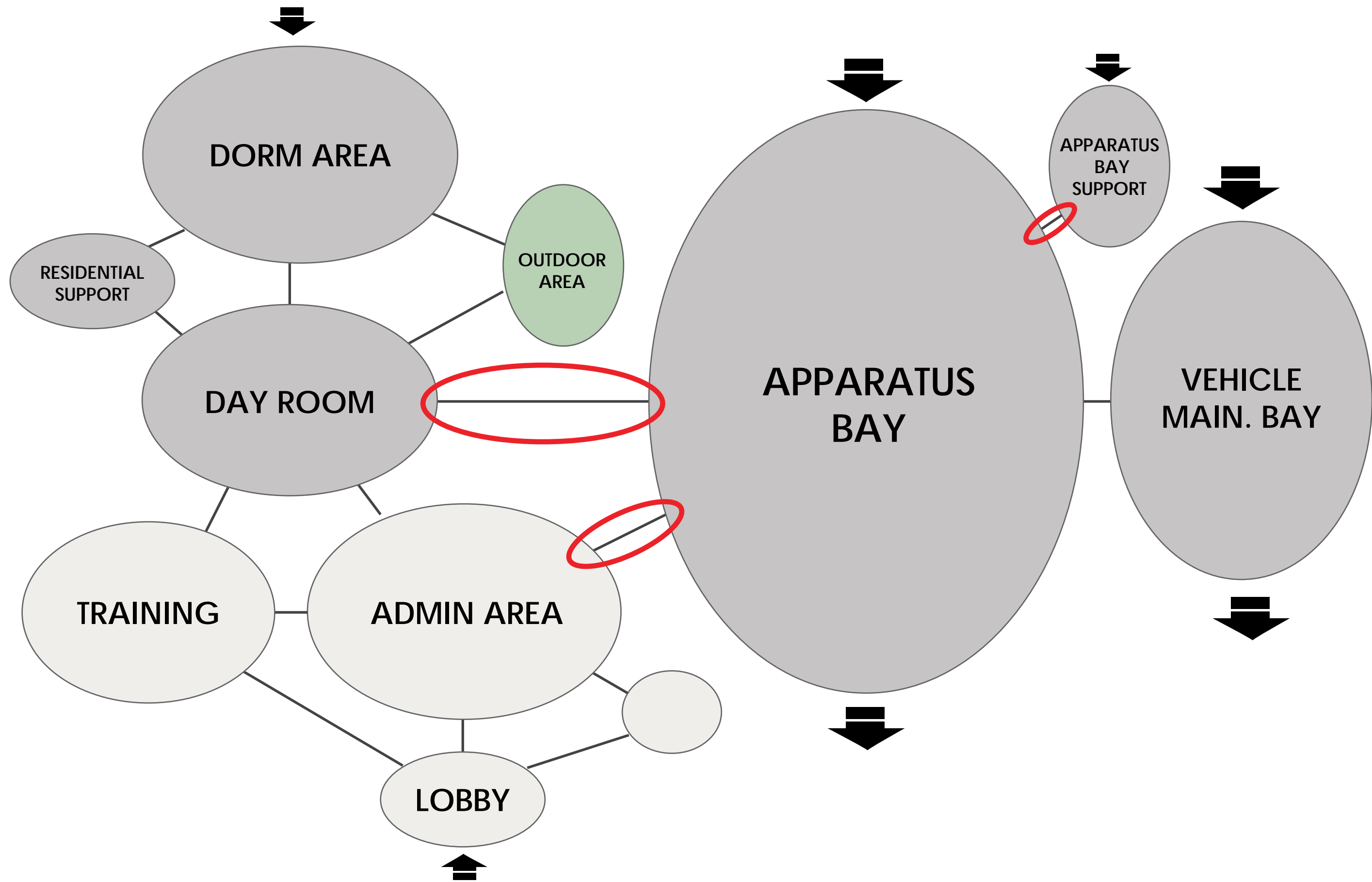
**Safe Fire Station**

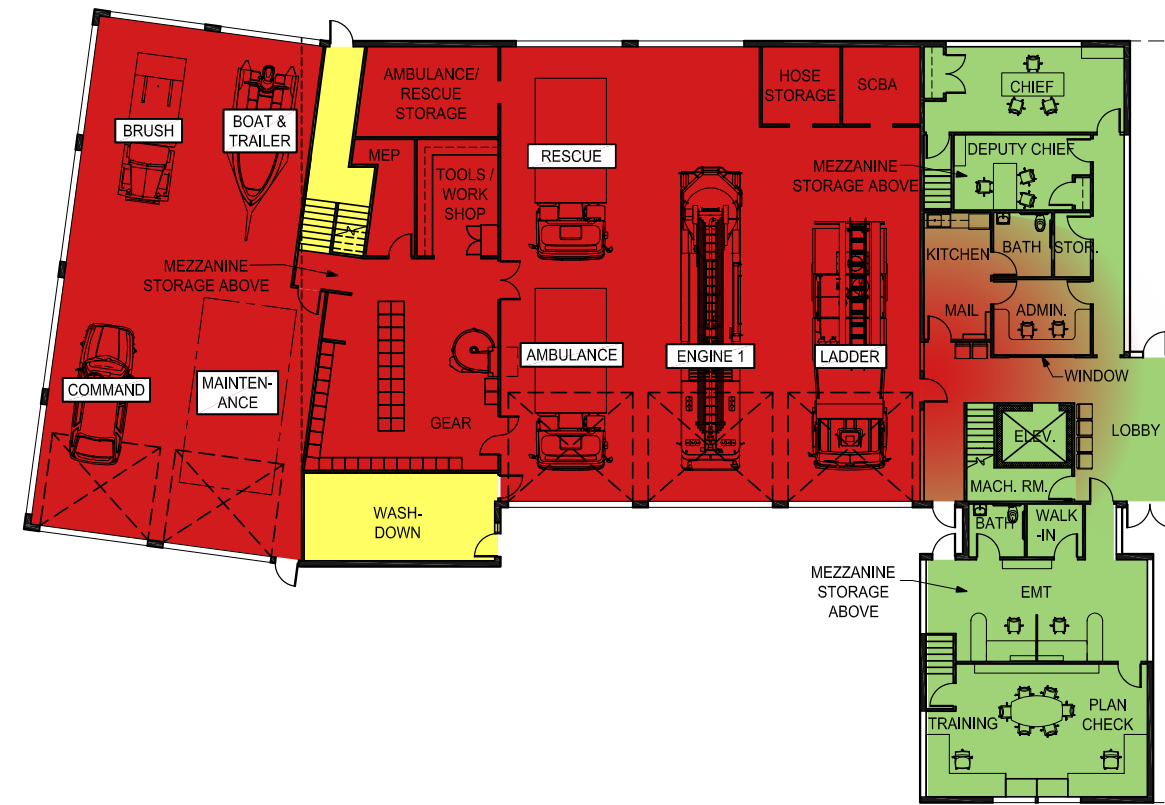


TGAS

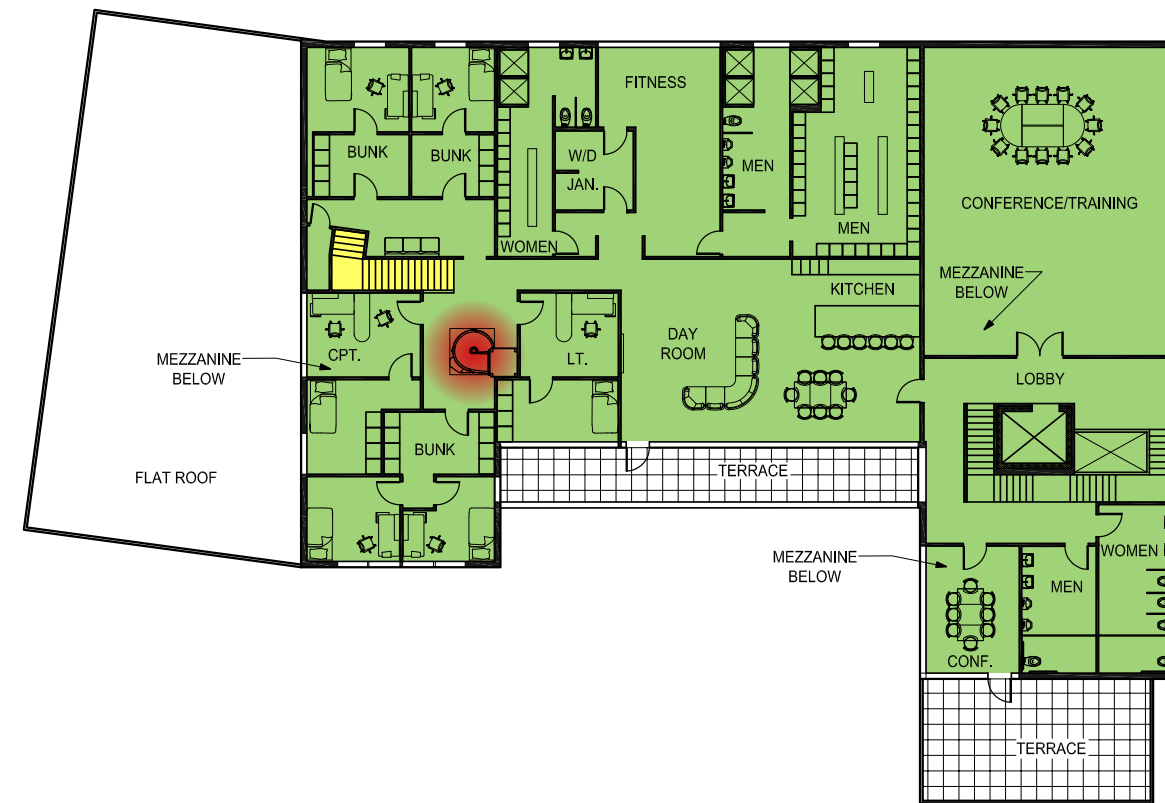
Limiting Carcinogen Transfer



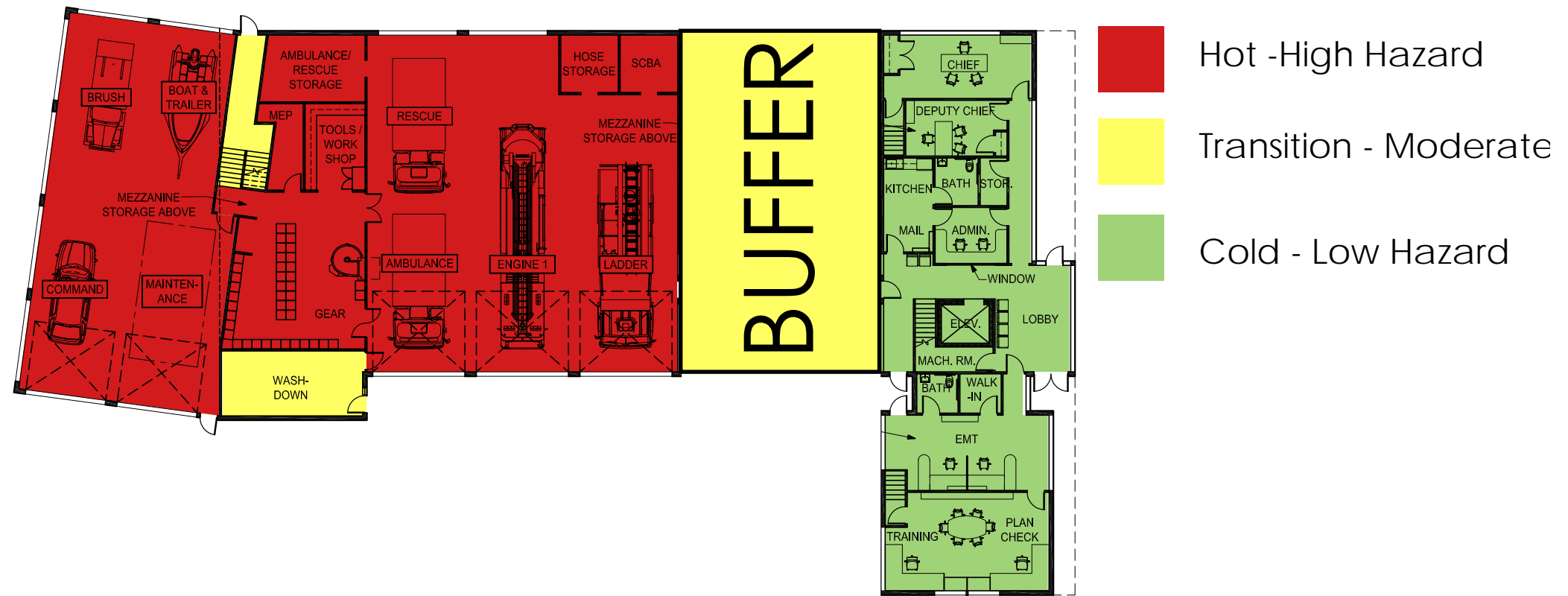




- Hot - High Hazard
- Transition - Moderate
- Cold - Low Hazard







# Fire Station Renovation



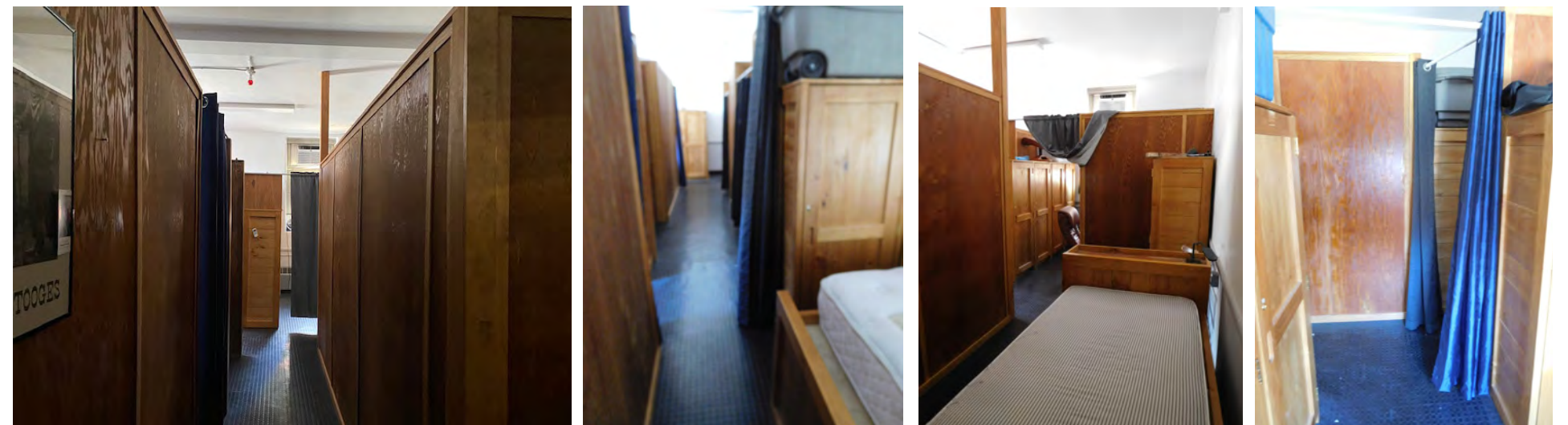
Non compliant Restroom

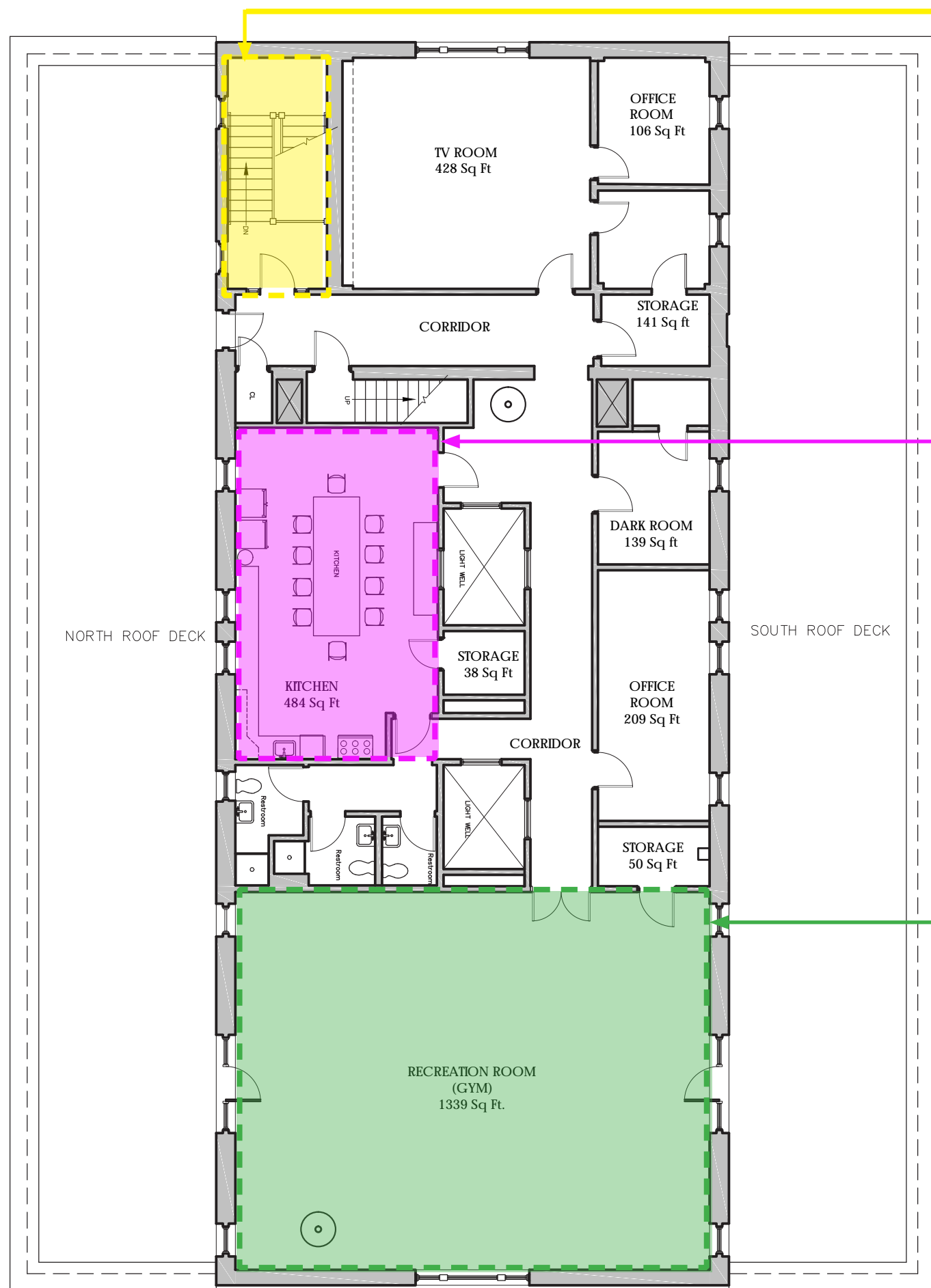


Outdated Locker Room



Group Dormitory









Gender Neutral Restrooms



Gender Neutral Bunkrooms



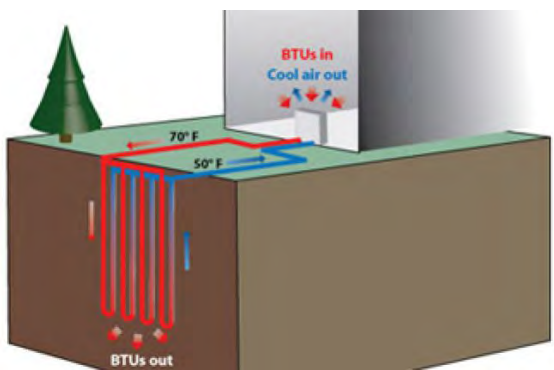
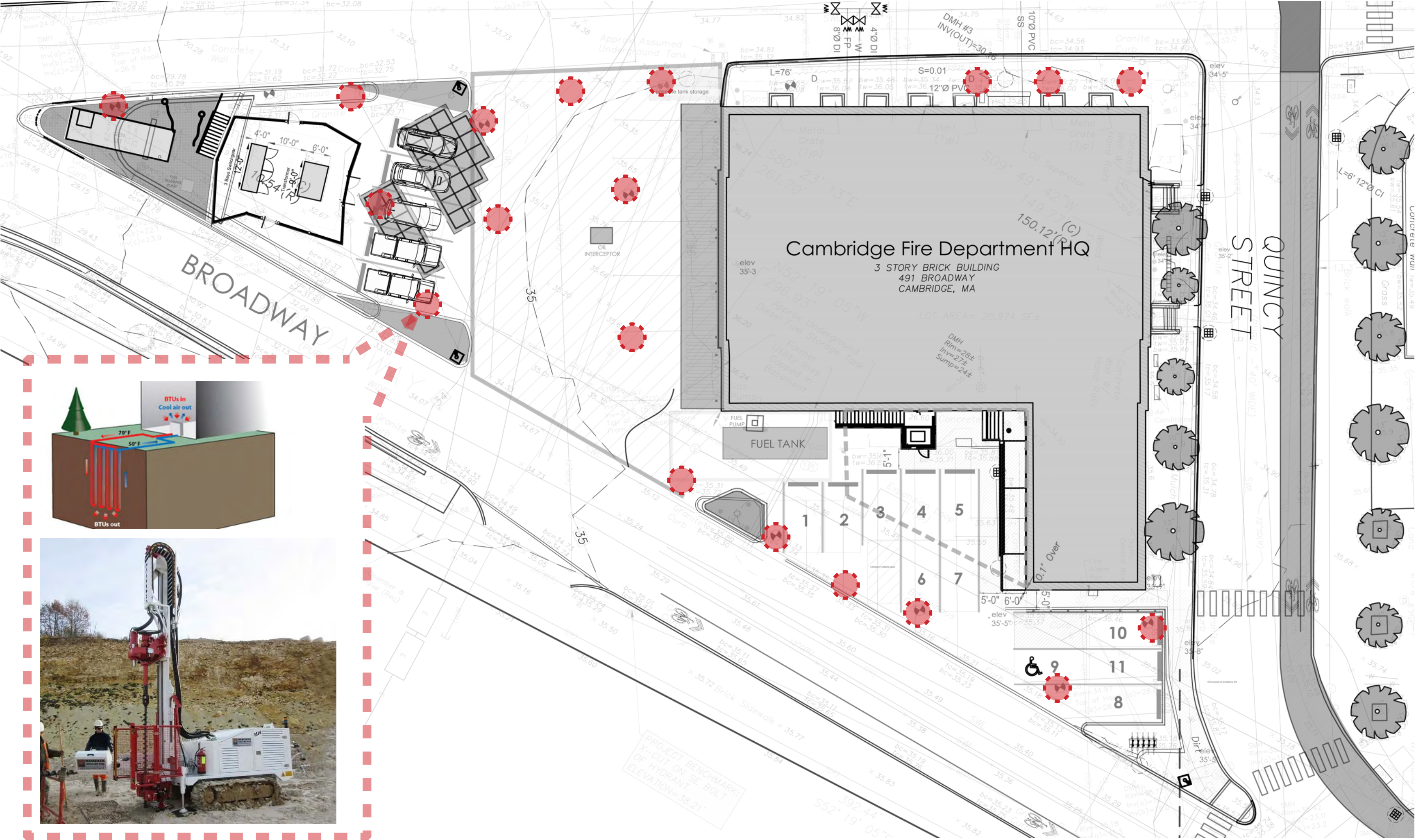
Updated kitchen



# Net Zero Emissions Building



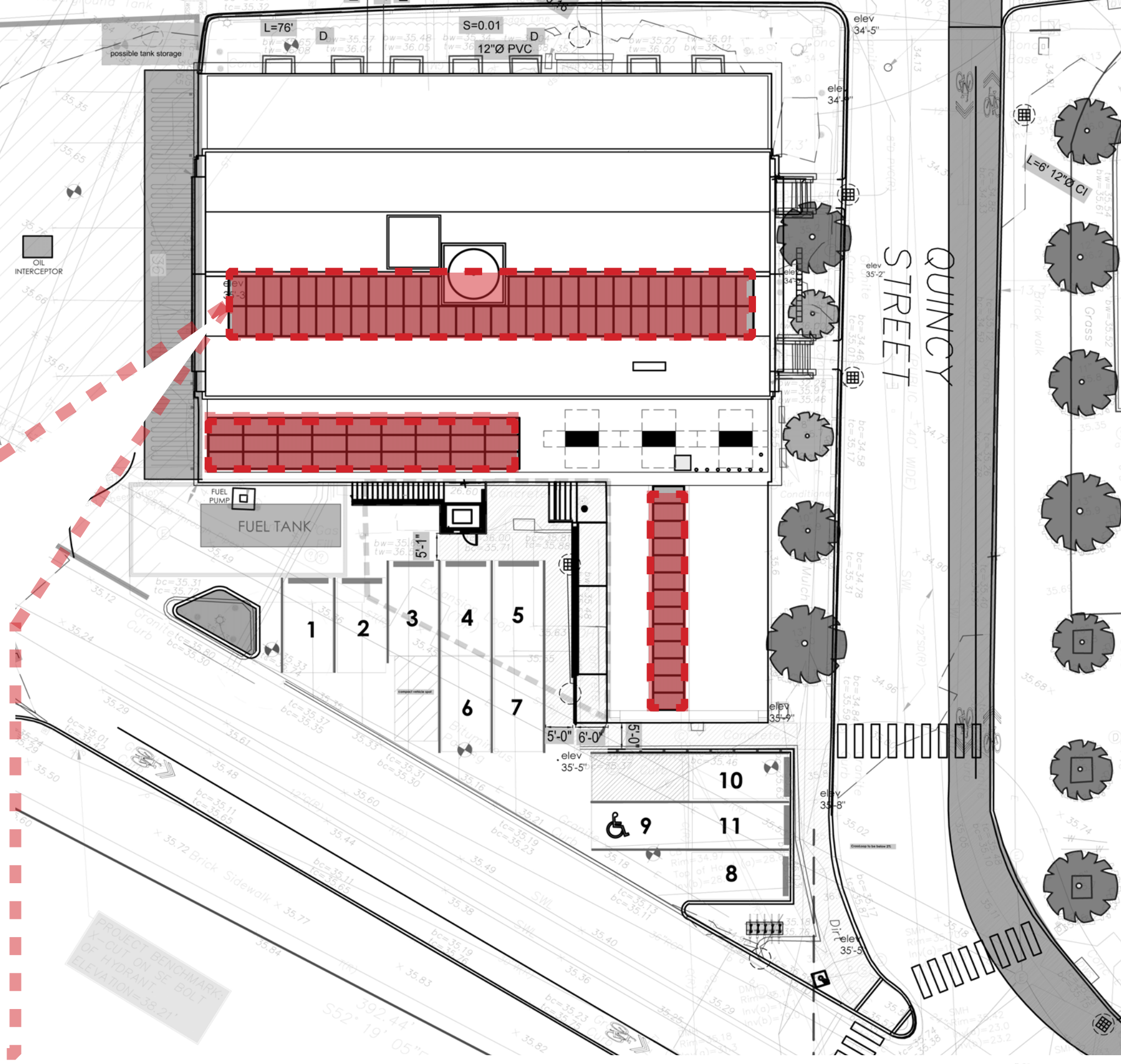
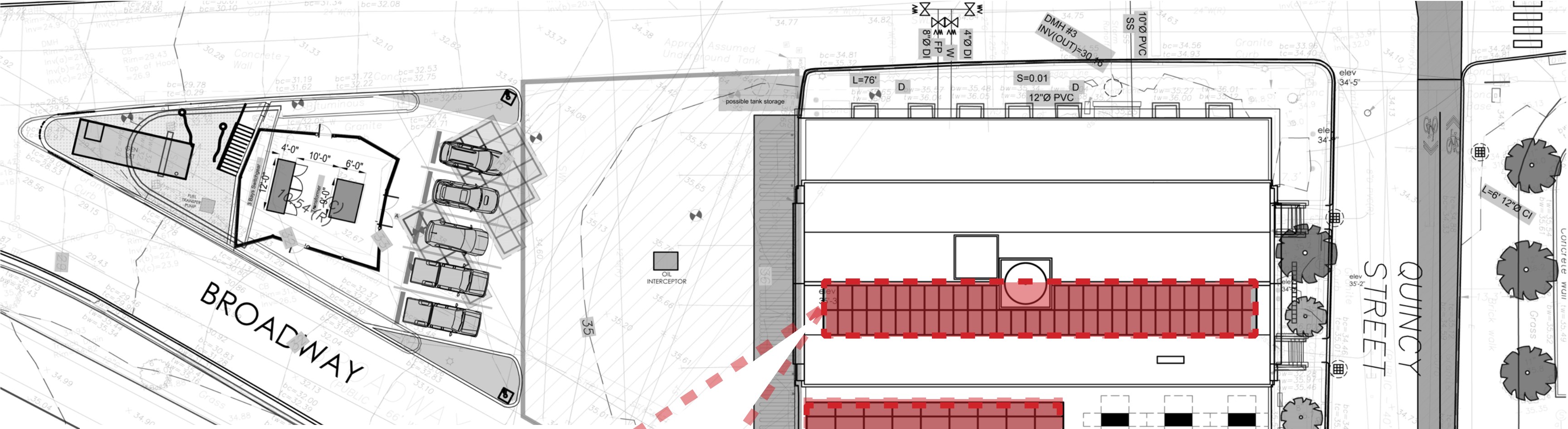


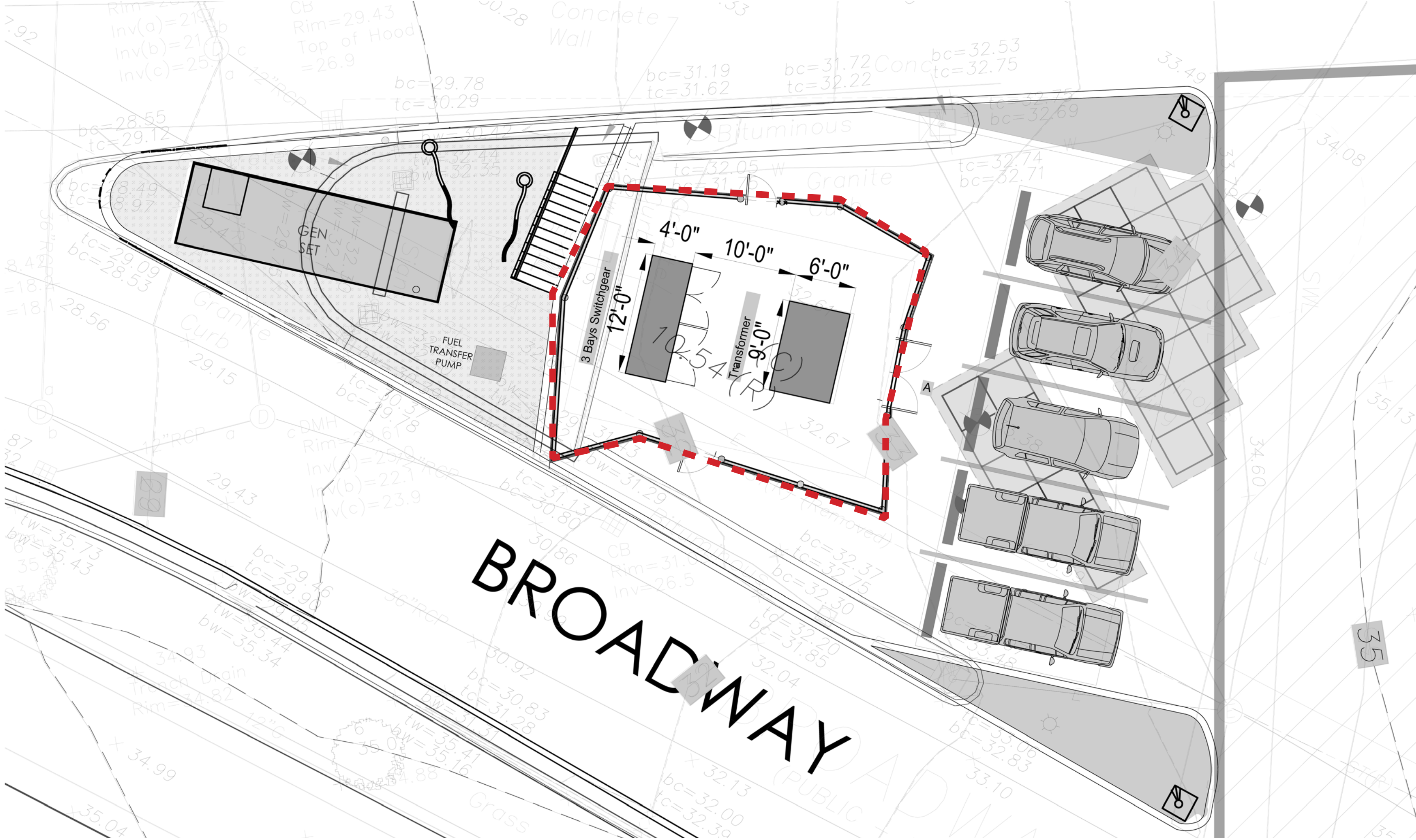


TGAS

Geothermal wells



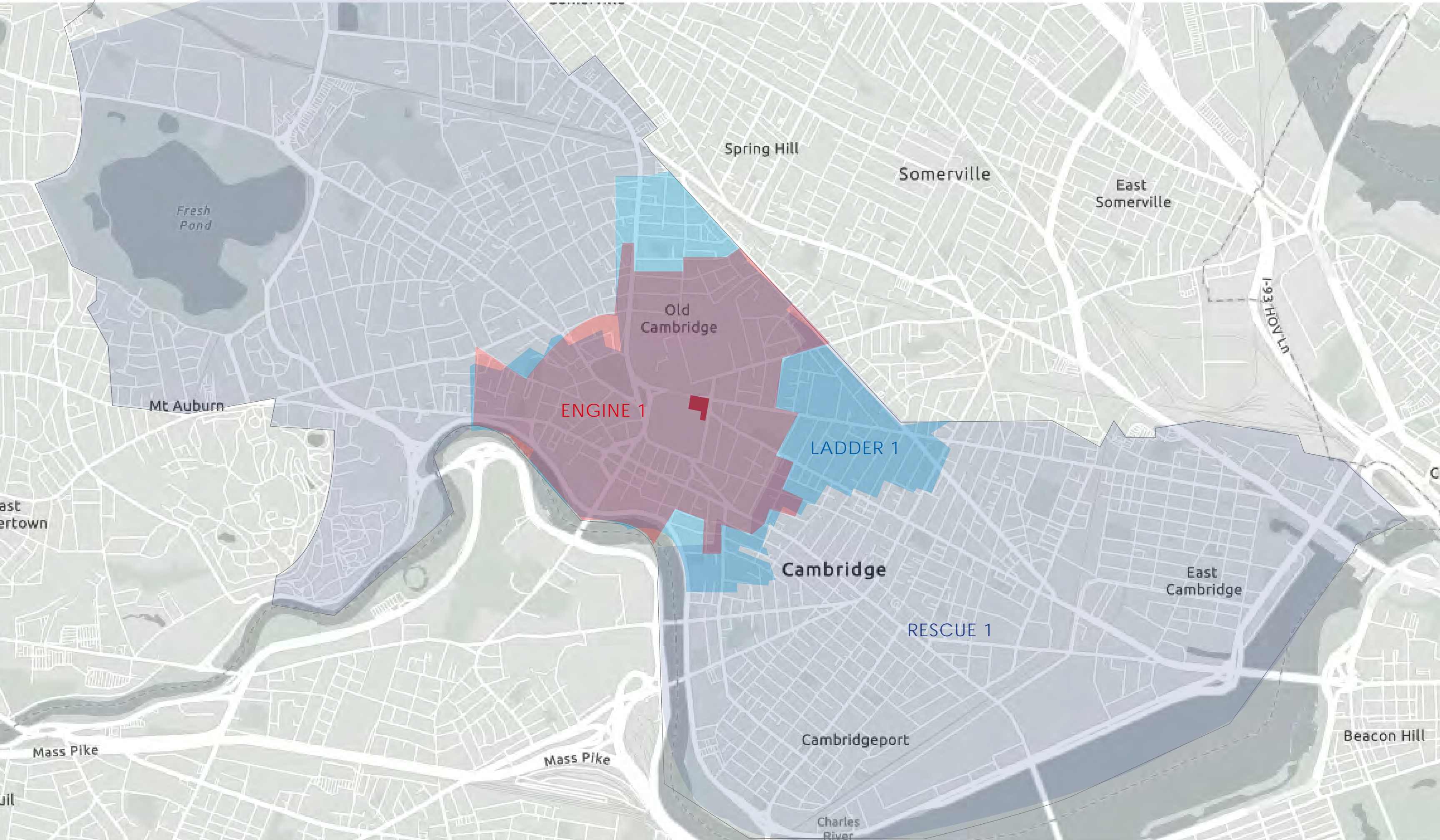


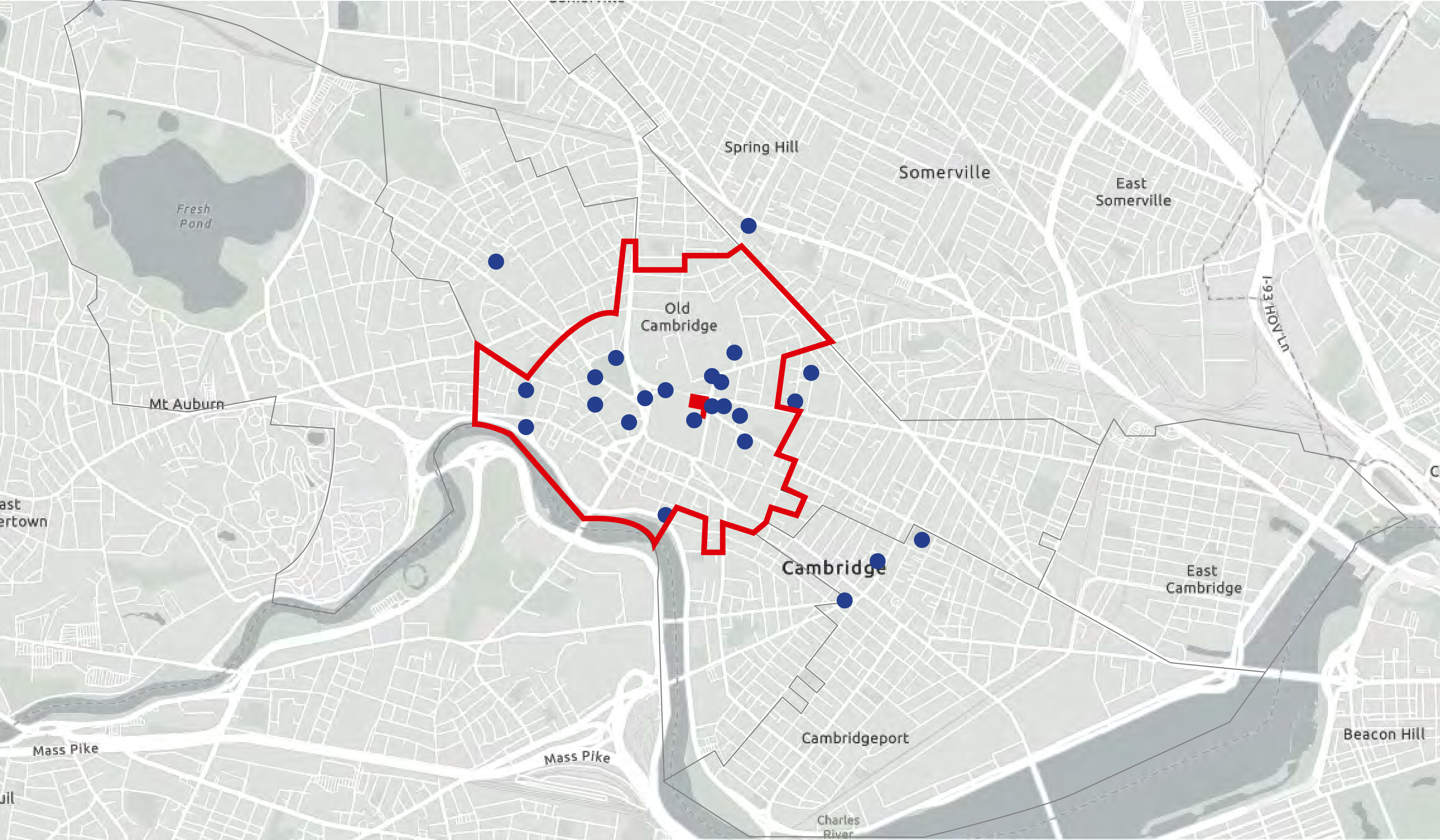






# Temporary Facility







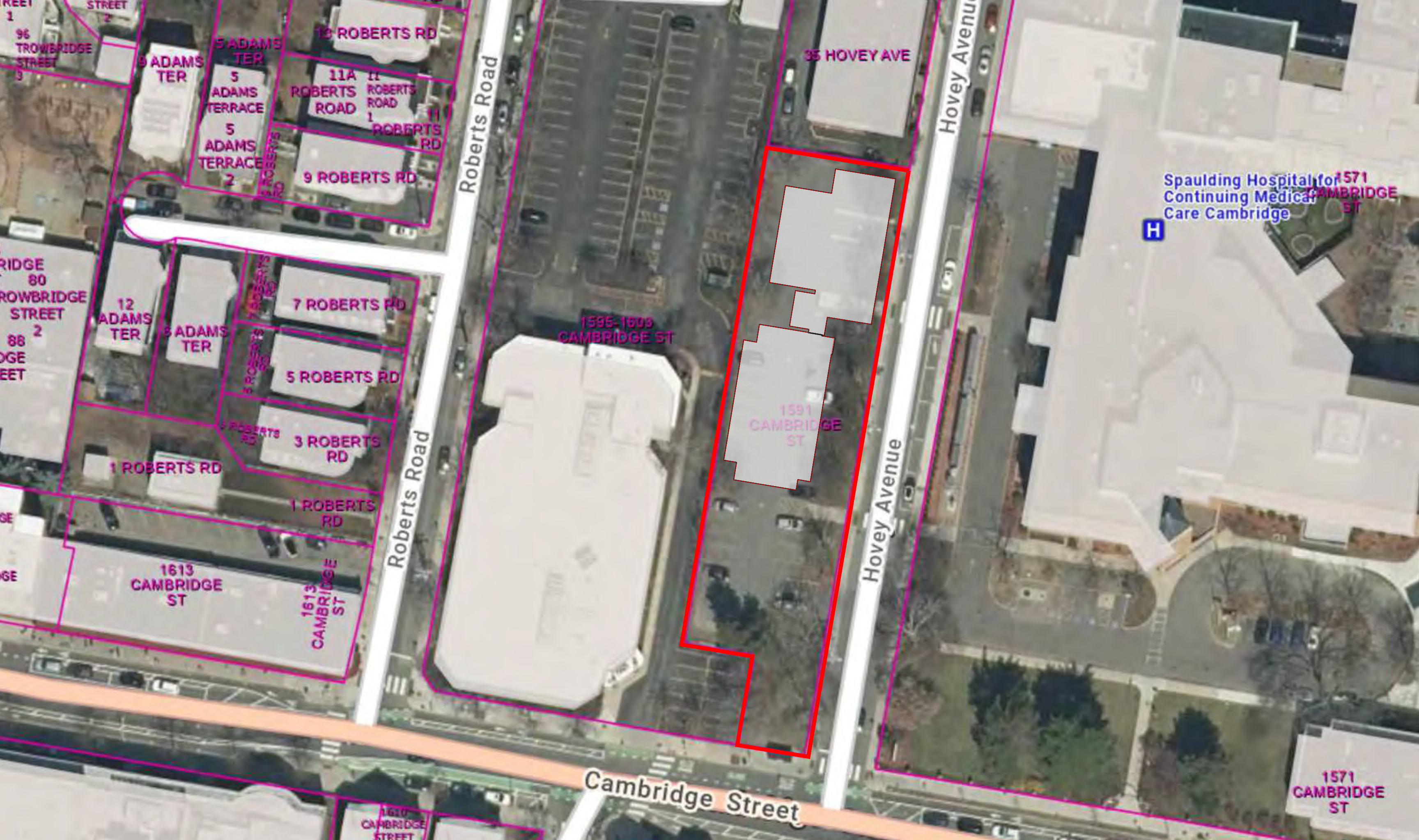




TGAS

Best Location for Temporary Facility @ Hovey Avenue





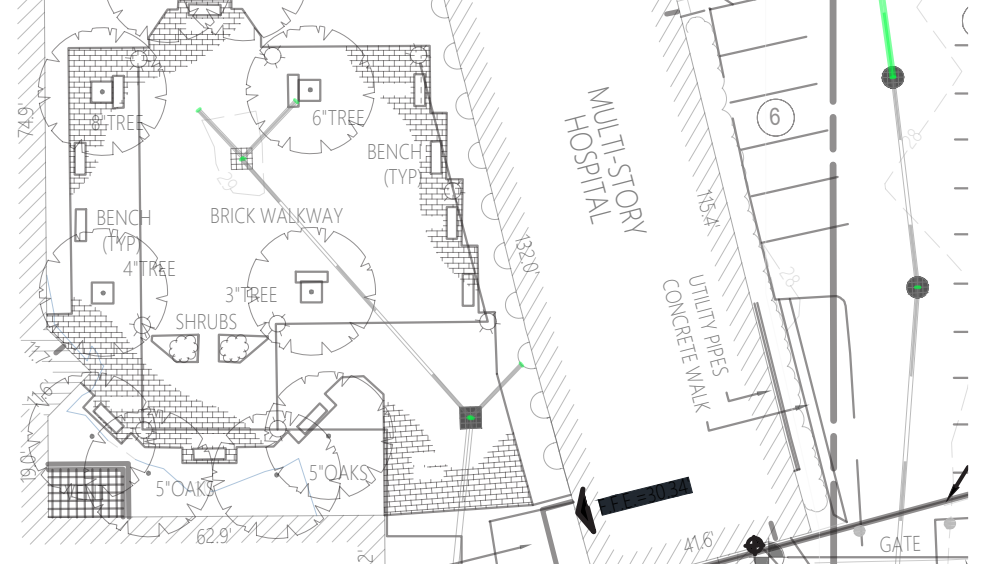
N/F  
140-70

HOVEY AVENUE

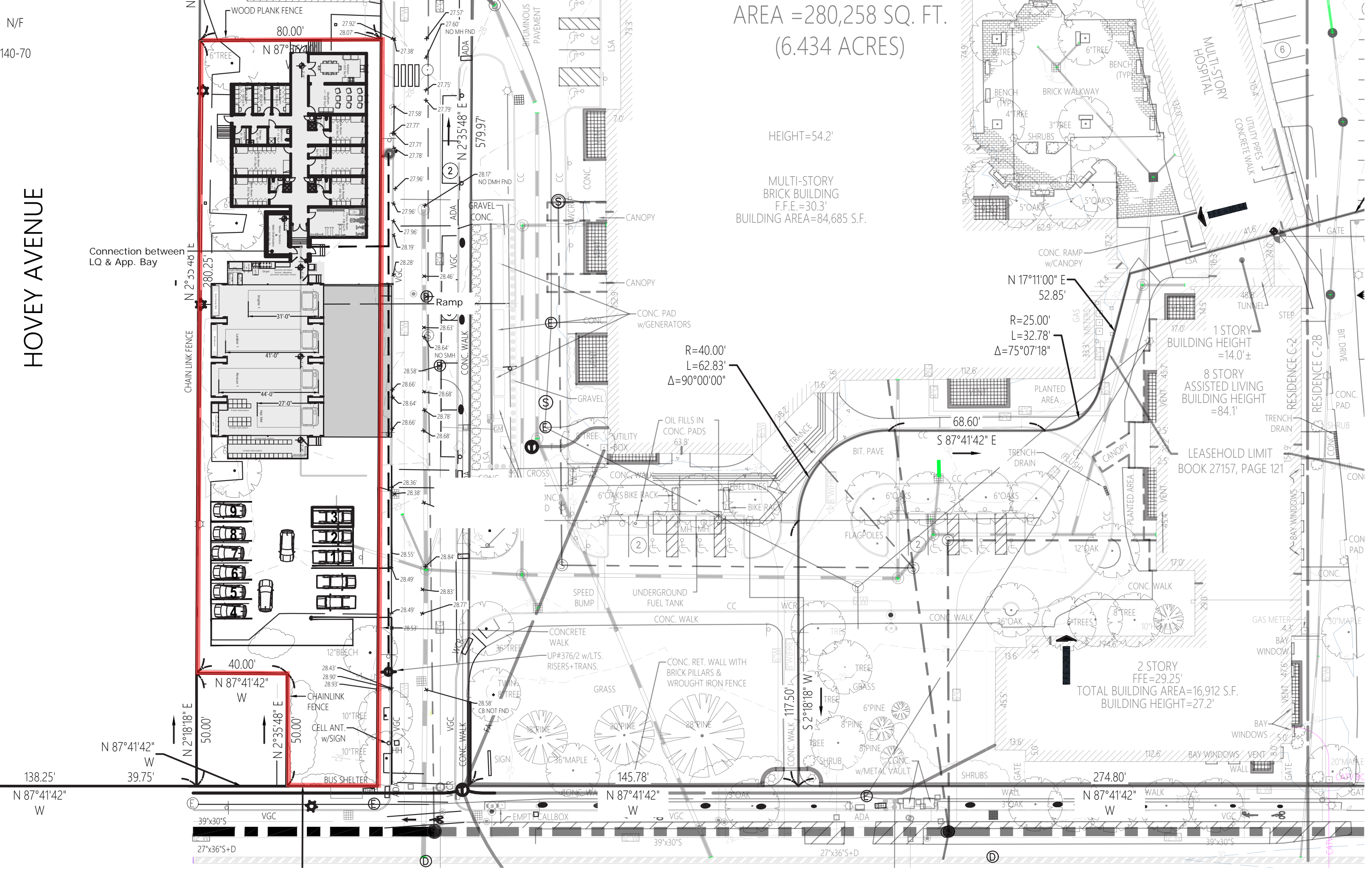
AREA = 280,258 SQ. FT.  
(6.434 ACRES)

HEIGHT = 54.2'

MULTI-STORY  
BRICK BUILDING  
F.F.E. = 30.3'  
BUILDING AREA = 84,685 S.F.



Connection between  
LQ & App. Bay



R=40.00'  
L=62.83'  
Δ=90°00'00"

N 17°11'00" E  
52.85'  
R=25.00'  
L=32.78'  
Δ=75°07'18"

1 STORY  
BUILDING HEIGHT  
= 14.0'±

8 STORY  
ASSISTED LIVING  
BUILDING HEIGHT  
= 84.1'

LEASEHOLD LIMIT  
BOOK 27157, PAGE 121

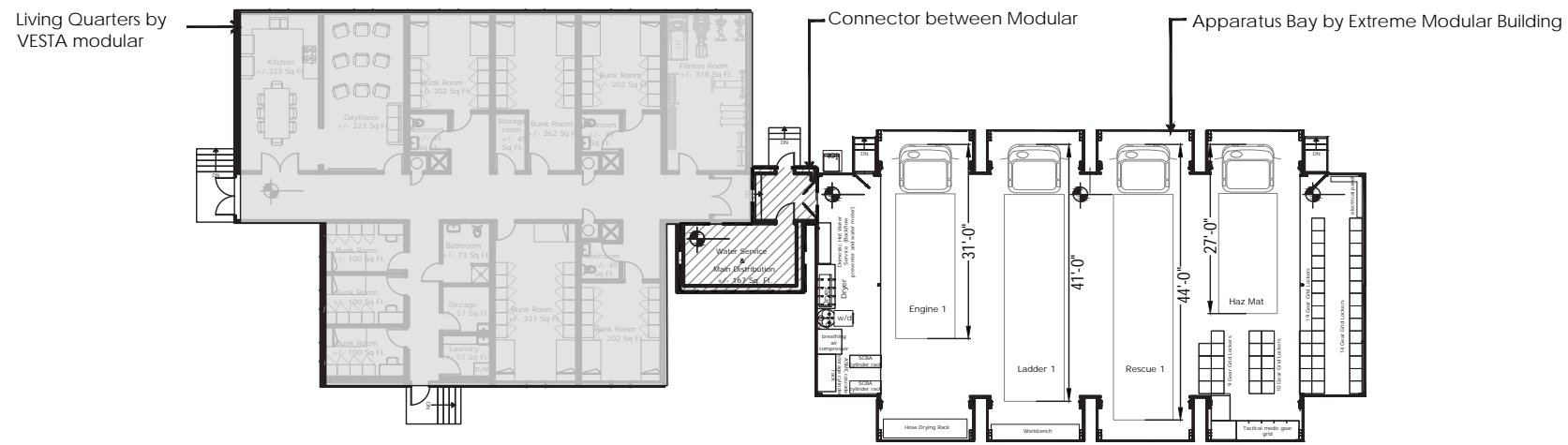
2 STORY  
FFE = 29.25'  
TOTAL BUILDING AREA = 16,912 S.F.  
BUILDING HEIGHT = 27.2'

TGAS

Station 10 @ Hovey Avenue

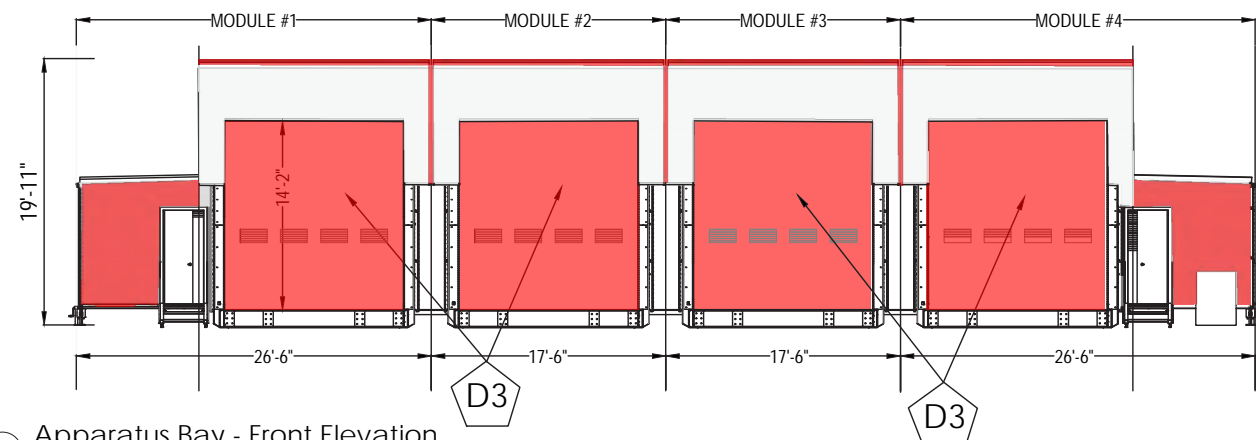






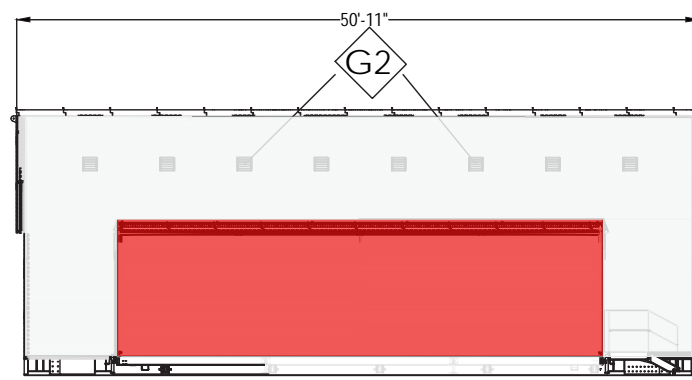
① Temporary Facility Diagram

Scale: 1/32" = 1'-0"



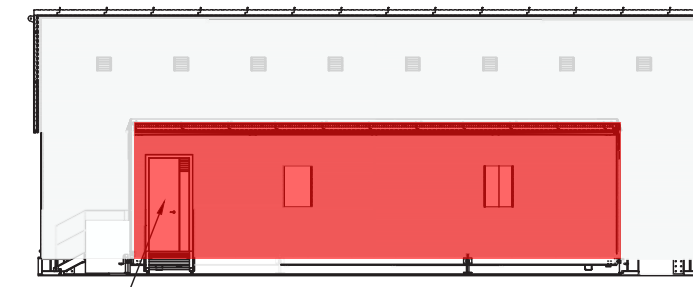
② Apparatus Bay - Front Elevation

Scale: 1/16" = 1'-0"



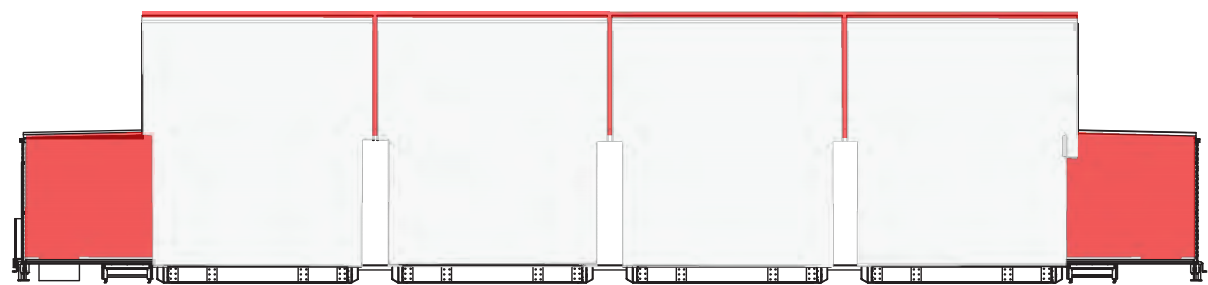
③ Apparatus Bay - Left Side Elevation

Scale: 1/16" = 1'-0"



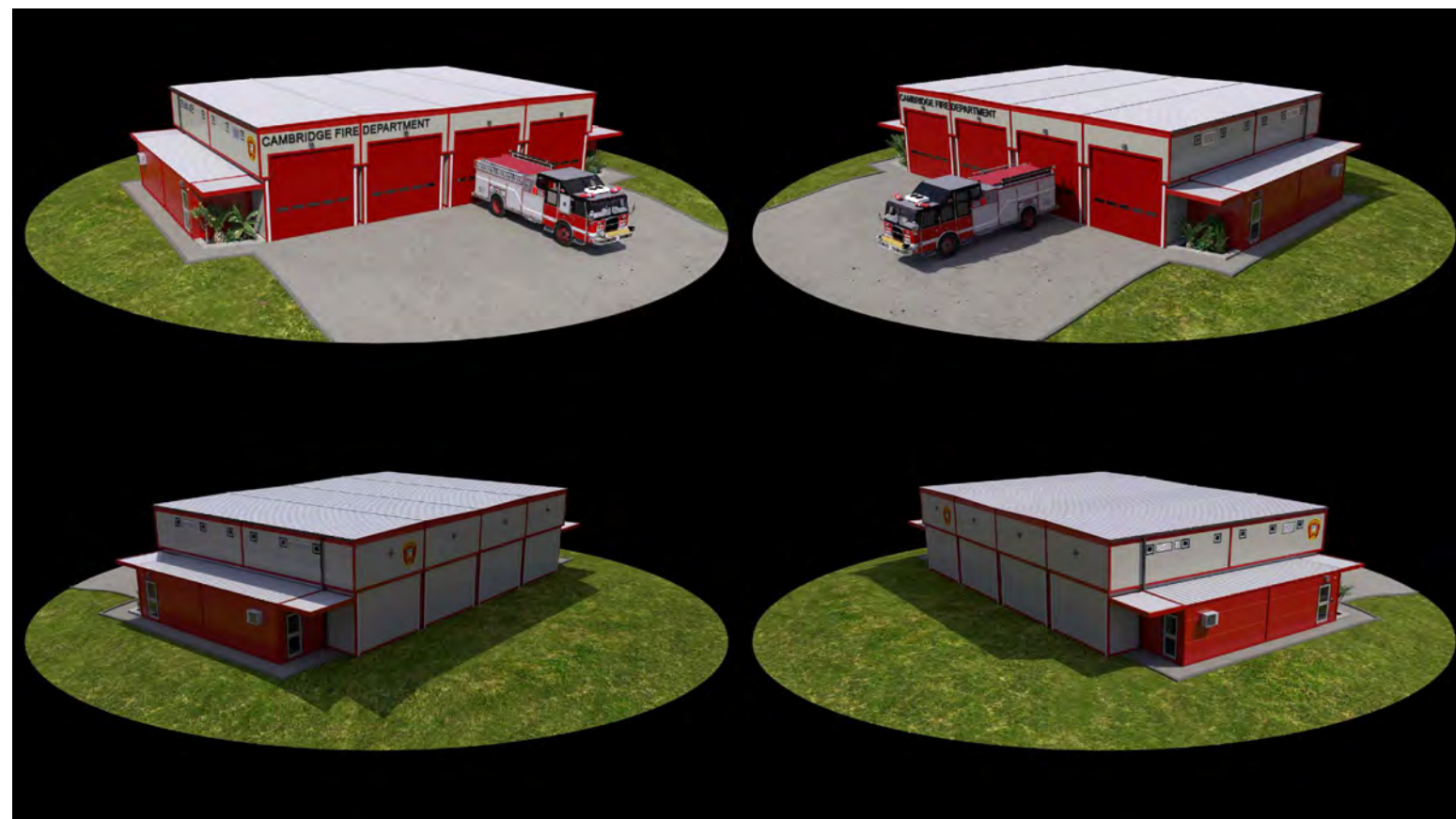
④ Apparatus Bay - Right Side Elevation

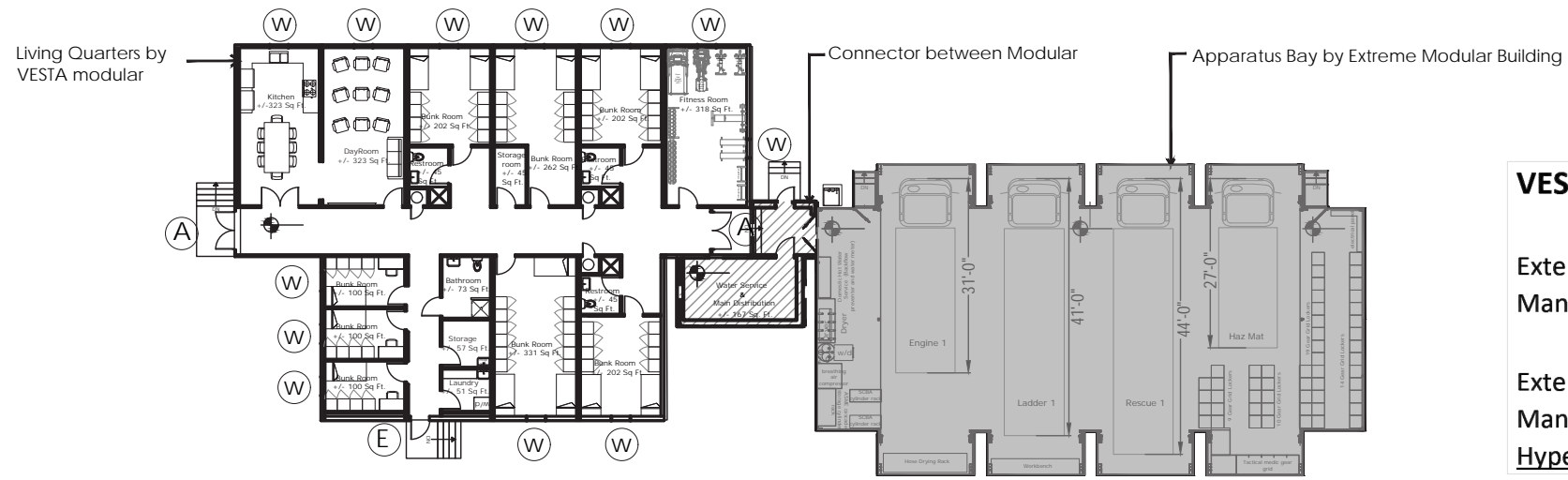
Scale: 1/16" = 1'-0"



⑤ Apparatus Bay - Front Elevation

Scale: 1/16" = 1'-0"





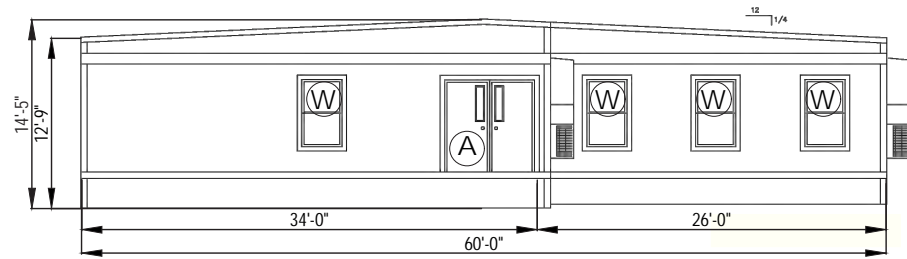
**VESTA Exterior Colors**

Exterior Wall, Window Trim, Door Trim, Door Color, Mansard, Skirting Color - **SW 6260 Unique Grey**

Exterior Bottom Trim, Corner Trim, Mansard Corner Trim, Mansard Top Trim, Mansard Bottom Trim - **SW 6965 Hyper Blue**

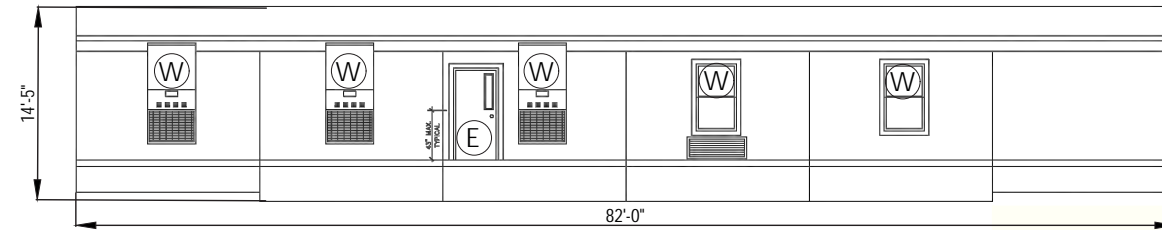
1 Temporary Facility Diagram

Scale: 1/32" = 1'-0"



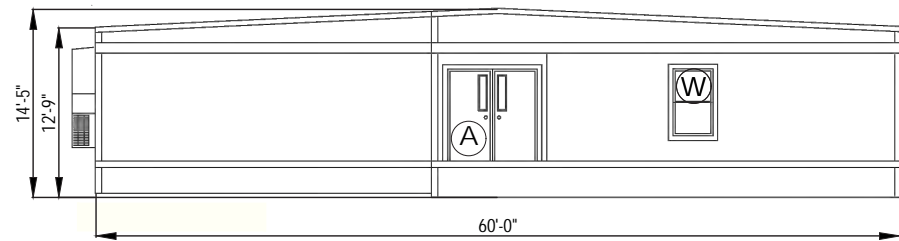
2 Living Quarters - Right Elevation

Scale: 1/16" = 1'-0"



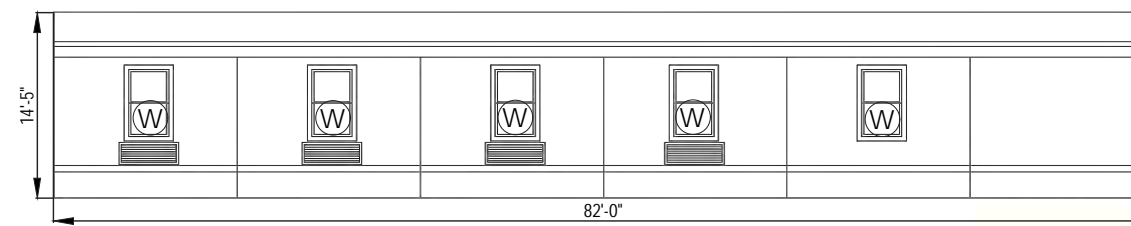
3 Living Quarters - Back Elevation

Scale: 1/16" = 1'-0"



4 Living Quarters - Left Elevation

Scale: 1/16" = 1'-0"



5 Living Quarters - Front Elevation

Scale: 1/16" = 1'-0"



VESTA Living Quarters - Similar Example (same colors)



VESTA Living Quarters - Similar Example (same colors)



VESTA Living Quarters - Similar Example (same colors)



TGAS

Station 10 @ Hovey Avenue







# Community & Project Safety

# COMMUNITY & PROJECT SAFETY

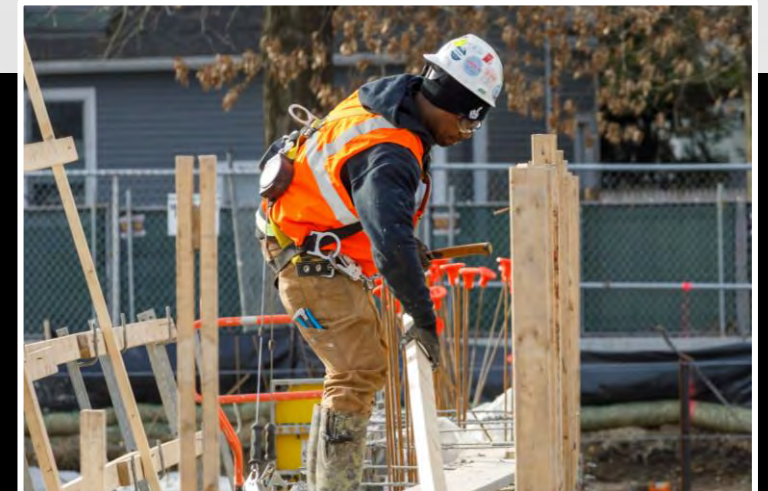
KEEPING PASSERSBY, VISITORS, WORKERS &  
CAMBRIDGE COMMUNITY

**SAFE 100% OF THE TIME**

IS PARAMOUNT!

## Key Elements

- **SAFETY PLAN**
  - Site Specific
- **COMMUNICATION**
  - Across the Board
- **SEPARATION**
  - Community & Construction
- **SAFETY ORIENTATION**
  - Mandatory
- **Job-Specific Hazards**
  - Knowledge & Planning
- **TECHNOLOGY**
  - Highwire
  - SiteForm



# CONSTRUCTION MITIGATION



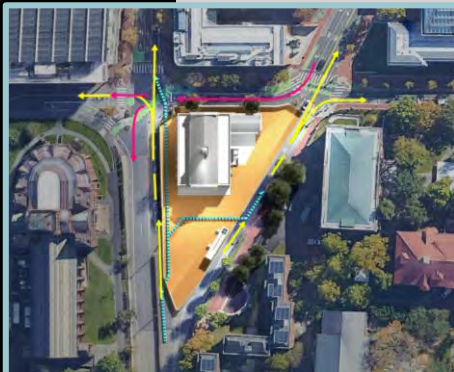
## Communication

- Community meetings
- Websites / Email / Flyers
- Designated neighborhood liaison



## Community Concerns

- Dust
- Noise
- Vibration Control
- Rodent Control



## Traffic Management

- Cambridge Street / Broadway / Quincy Street



## Delivery Management

- No deliveries before 7 am
- Remote staging



## Parking

- Minimize local impact

# SITE LOGISTICS

## TEMP FIRE STATION SITE LOGISTICS

- SAFETY PLAN
  - Job Specific
- COMMUNICATION
  - Across the Board
- SEPARATION
  - Community & Construction

- SAFETY ORIENTATION
  - Mandatory
- Job-Specific Hazards
  - Knowledge & Planning
- TECHNOLOGY
  - Highwire
  - SiteForm

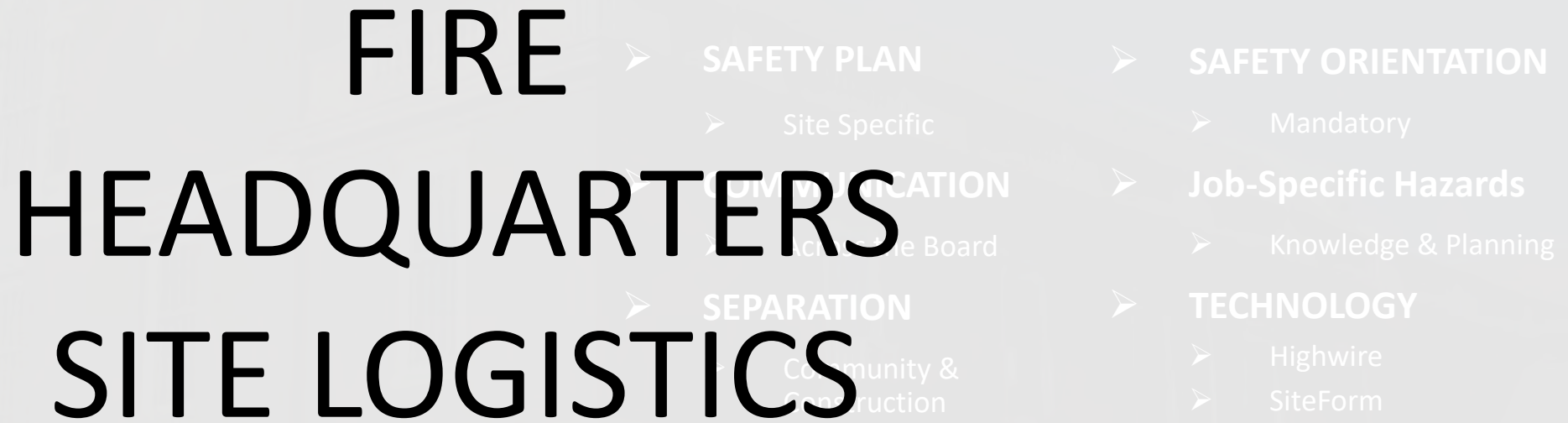




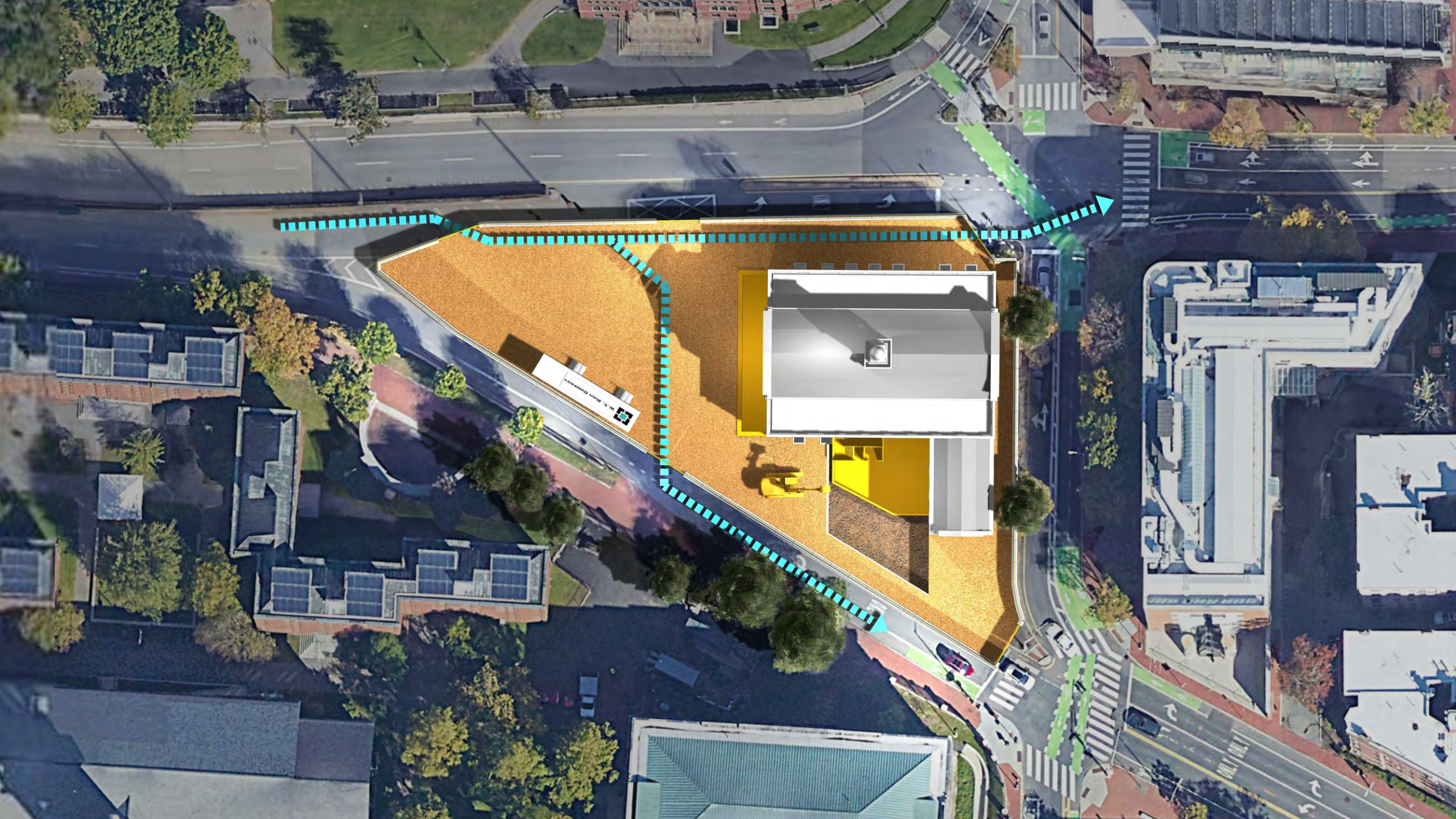


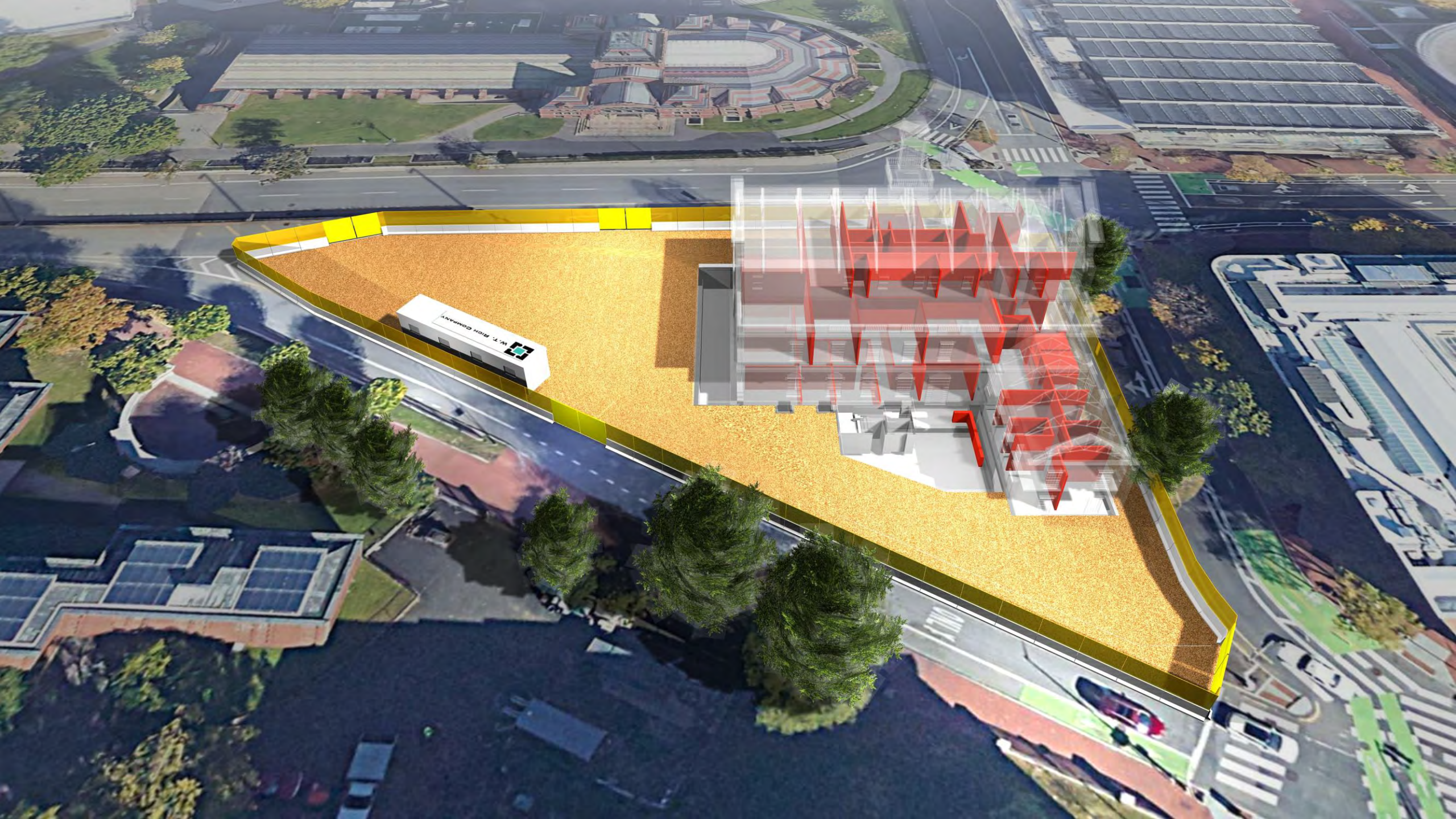


# SITE LOGISTICS

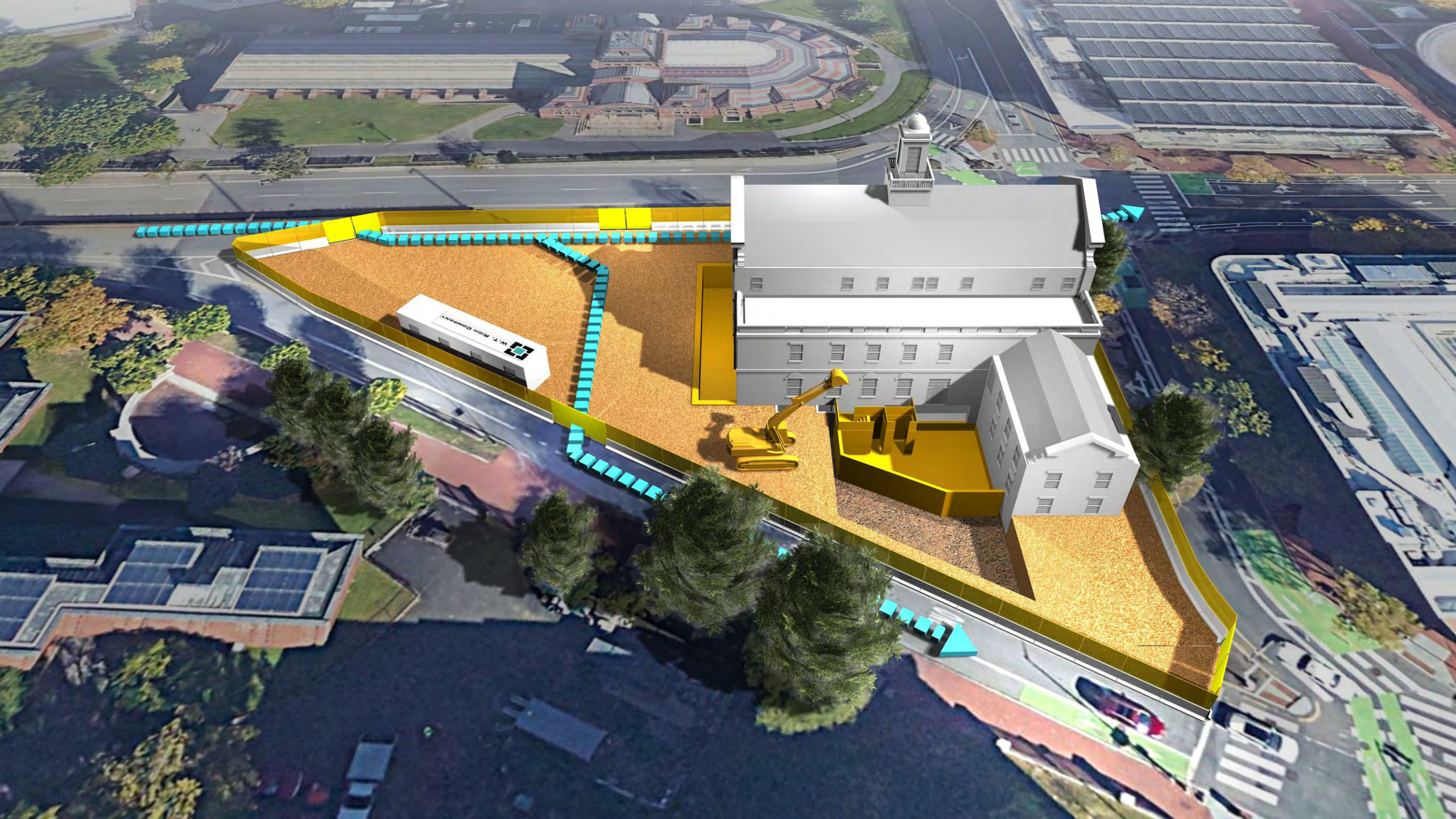








W. T. RICH COMPANY



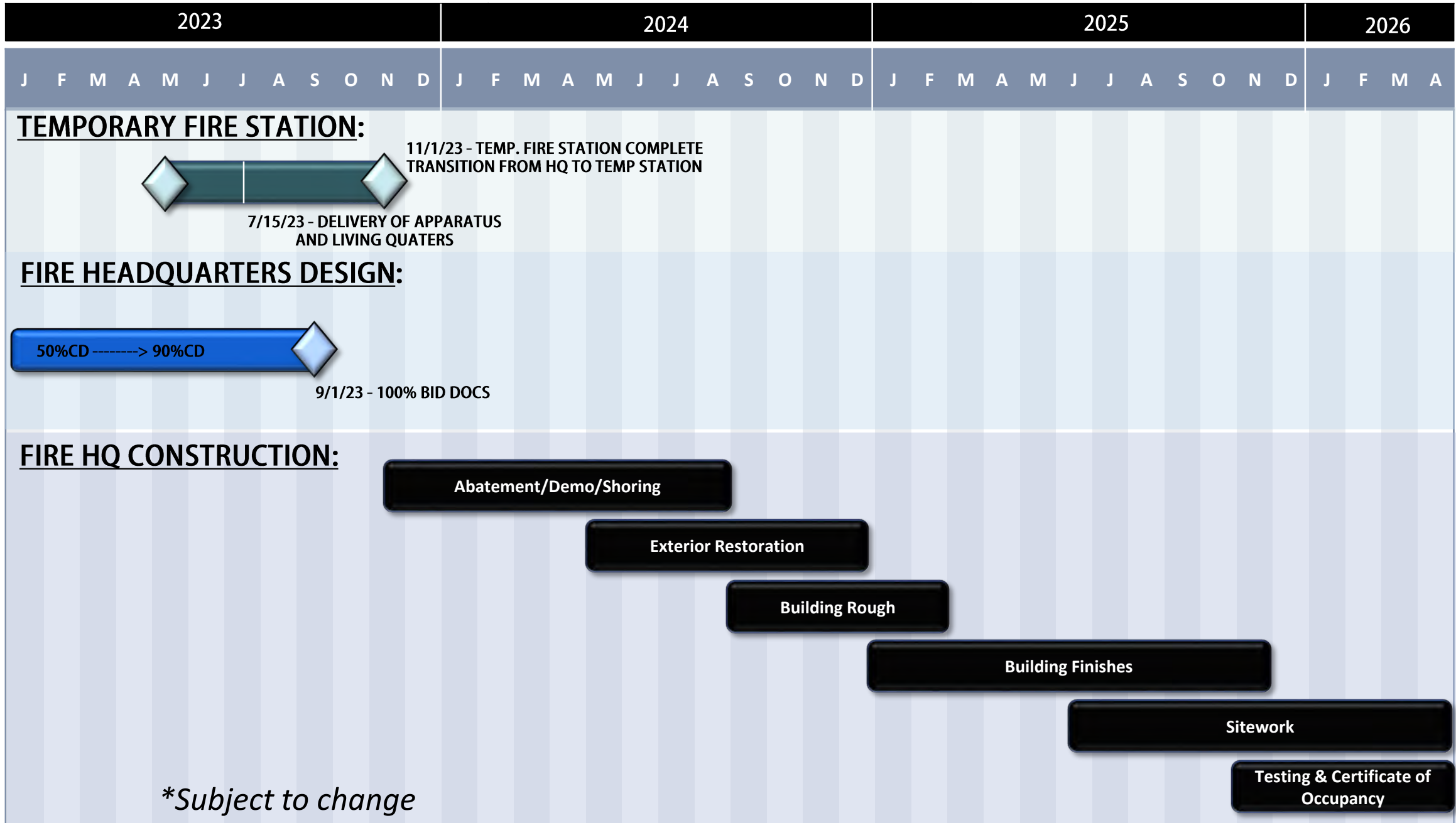




# **Preliminary Schedule**

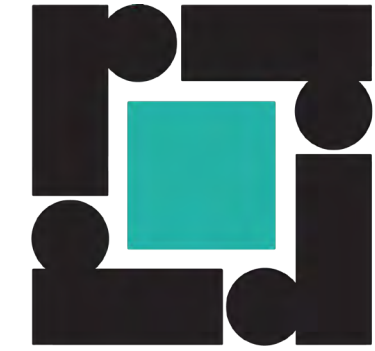


# PRELIM SCHEDULE





TGAS  
THE **GALANTE** ARCHITECTURE STUDIO



**W.T. RICH COMPANY**

Q&A