

Comments on originally proposed design received at February 6th hearing

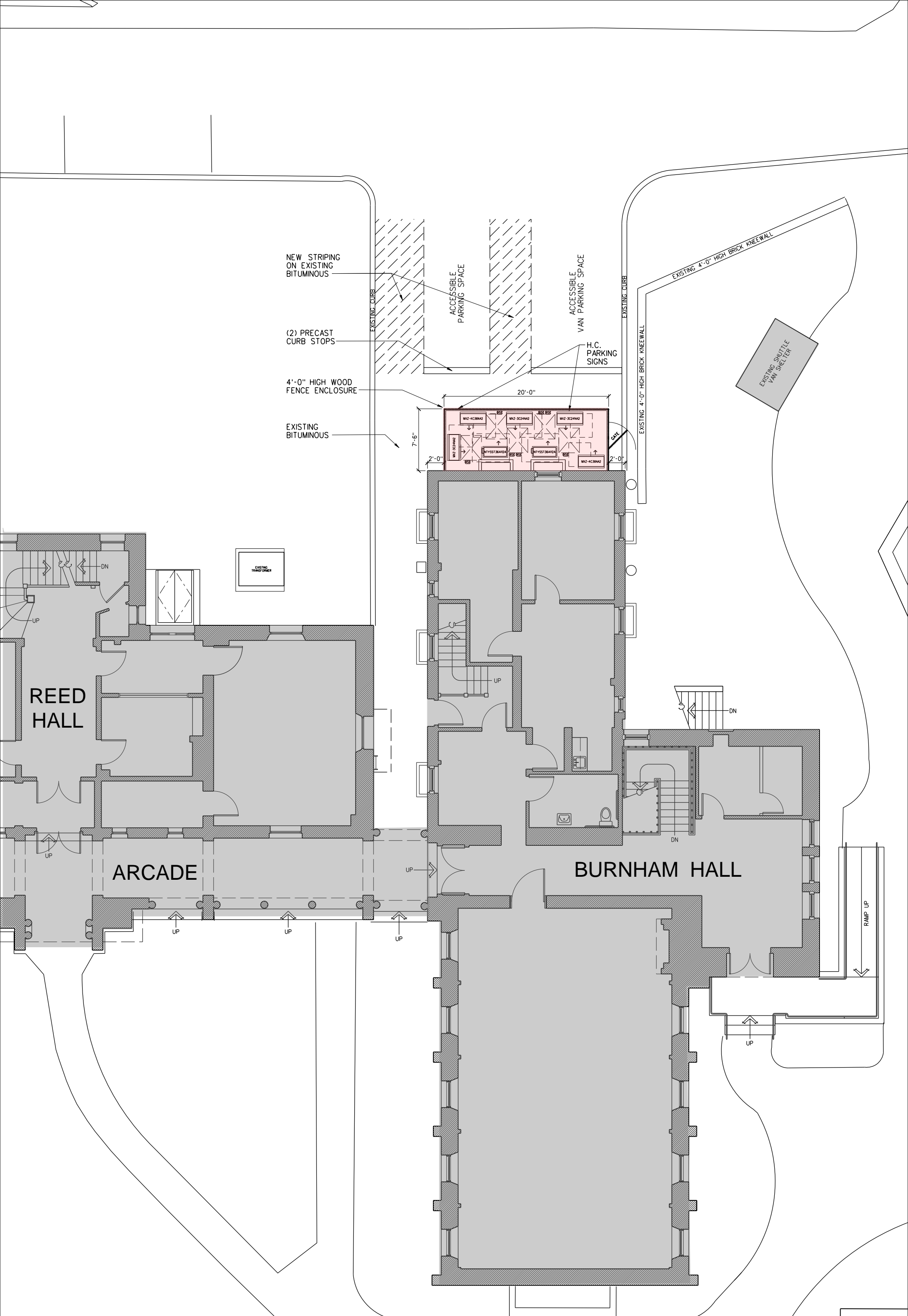
At last month's meeting, Commissioners made the following observations and comments about the originally proposed enclosure:

- The 7'-6" height was too massive.
- It was unfortunate that the fence obscured the lower half of the 1st floor window.
- The design did not relate to the adjacent low, brick wall in height or materiality.
- The paint color of the fence should not attempt to match the color of the brick.
- Some Commissioners suggested that brick would a better selection for the material of the enclosure; however, others noted that matching the weathered brick of the original building or the adjacent low wall would be difficult.

Revised design

The revised design responds to the Commissioners' comments as follows:

- The height of the proposed enclosure is reduced to 4'-0".
 - In order to reduce the height, there will be seven smaller AC units inside the enclosure (instead of five taller units). Lesley plans to install three of the units now; the remaining four units will be installed in future projects.
 - The equipment will be used for cooling only, eliminating the need for snow stands, and units will sit on pads placed on grade. The overall height of the units will be approximately 37" high.
 - Our acoustic consultant has confirmed that this configuration of all seven units will comply with the Cambridge Noise Ordinance requirements (residential nighttime limits).
- The footprint of the proposed enclosure remains the same: 20'-0" x 7'-6".
- The 4'-0" height of the enclosure will align with the height of the adjacent low brick wall.
- The lower half of the double-hung window will not be obscured.
- The proposed material of the fence remains wood, but the wood will be stained gray (similar to the stone at the adjacent Reed Building).
- The existing stainless steel intake/exhaust vents for the existing condensing boilers will be painted to blend with the brick.
- Required signage for accessible parking spaces will be mounted to posts just inside the fence. (The height of the signs is mandated by ADA Standards.)



NEW STRIPING
ON EXISTING
BITUMINOUS

(2) PRECAST
CURB STOPS

4'-0" HIGH WOOD
FENCE ENCLOSURE

EXISTING
BITUMINOUS

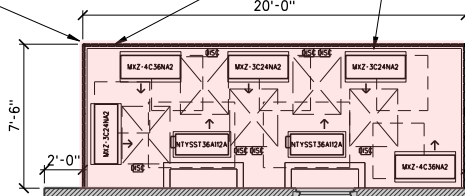
ACCESSIBLE
PARKING SPACE

ACCESSIBLE
VAN PARKING SPACE

H.C.
PARKING
SIGNS

EXISTING 4'-0" HIGH BRICK KNEEWALL

EXISTING SHUTTLE
VAN SHELTER

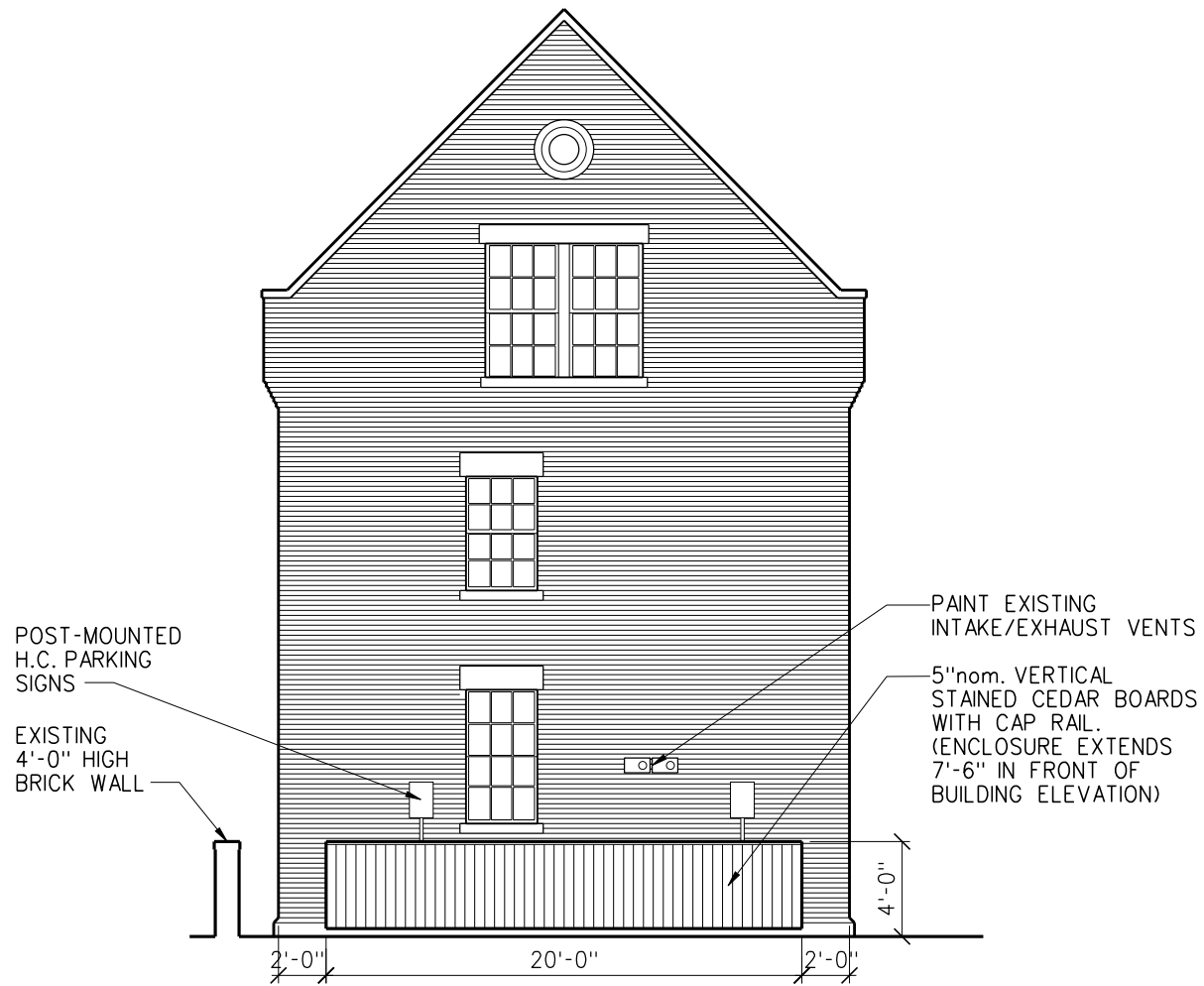


REED
HALL

ARCADE

BURNHAM HALL

RAMP UP





Lesley University
Burnham Hall
Existing North Elevation

**Perry and Radford
Architects**

REVISED
28 Feb 2020



Lesley University
Burnham Hall

Proposed Fenced Enclosure for HVAC Equipment

**Perry and Radford
Architects**

REVISED
28 Feb 2020