

⊗ RC KELLEY STREET

1 SITE PLAN
SCALE: 1/16" = 1'

RECEIVED

NOV 09 2016

CAMBRIDGE HISTORICAL COMMISSION

KYU SUNG WOO
ARCHITECTS

488 GREEN ST CAMBRIDGE MA 02139
TEL 617 547 0128 FAX 617 547 9675
KSWA@KSWA.COM WWW.KSWA.COM

7 RC KELLEY
STREET

DEMOLITION
PERMIT
SUPPLEMENTAL
MATERIALS
NOV. 9TH, 2016

D1.0



10 DONNELL (STREET VIEW)



7 RC KELLEY (STREET VIEW)



15 RC KELLEY (STREET VIEW)

RECEIVED

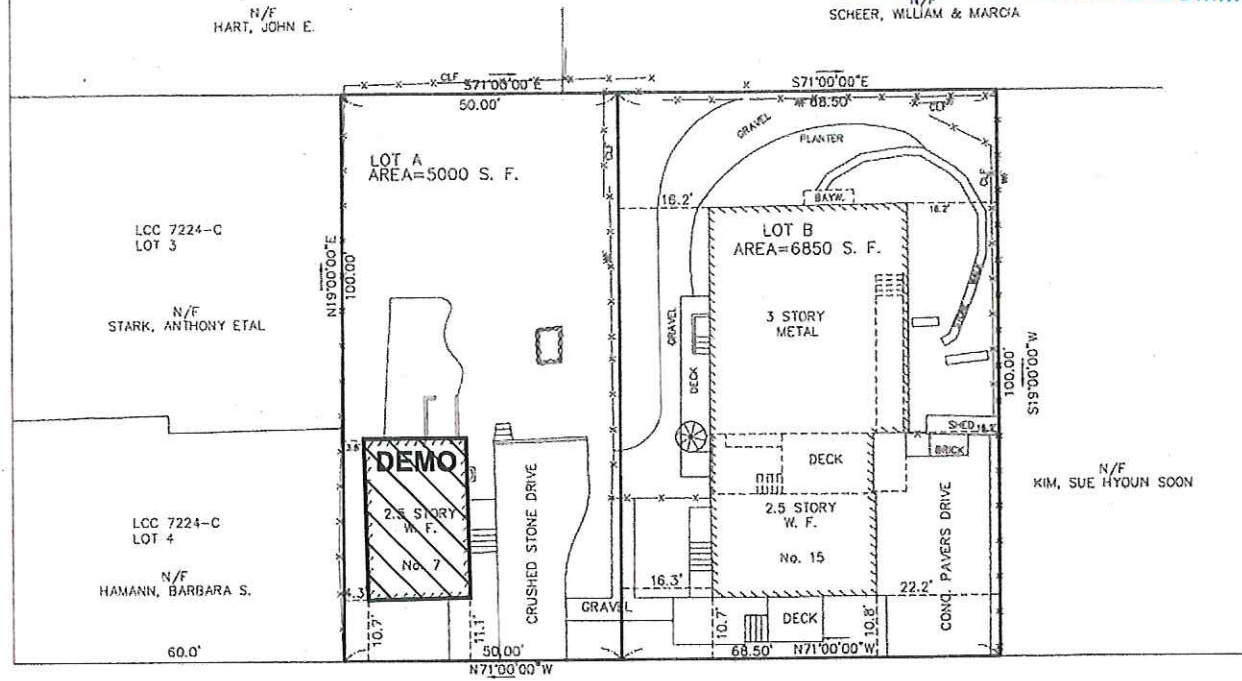
NOV 09 2015

APPROVAL UNDER THE SUBDIVISION CONTROL LAW NOT REQUIRED.

CAMBRIDGE HISTORICAL COMMISSION
N/F SCHEER, WILLIAM & MARCIA

CITY OF CAMBRIDGE PLANNING BOARD.

DONNELL STREET



ROBERT C. KELLEY STREET

(PUBLIC - 30' WIDE FORMERLY TUTTLE STREET)

RANJIT SINGANAYAGAM

Cambridge Building Commissioner
Inspectional Services Department
831 Massachusetts Avenue
Cambridge, MA 02139



I CERTIFY THAT THIS PLAN CONFORMS WITH THE RULES AND REGULATIONS OF THE REGISTERS OF DEEDS.

Antoni Szeszajnowicz

SUBDIVISION PLAN OF LAND
7-15 R. C. KELLEY STREET
CAMBRIDGE, MASS.

SCALE : 1" = 20' SEPTEMBER 29, 2016

AGH ENGINEERING

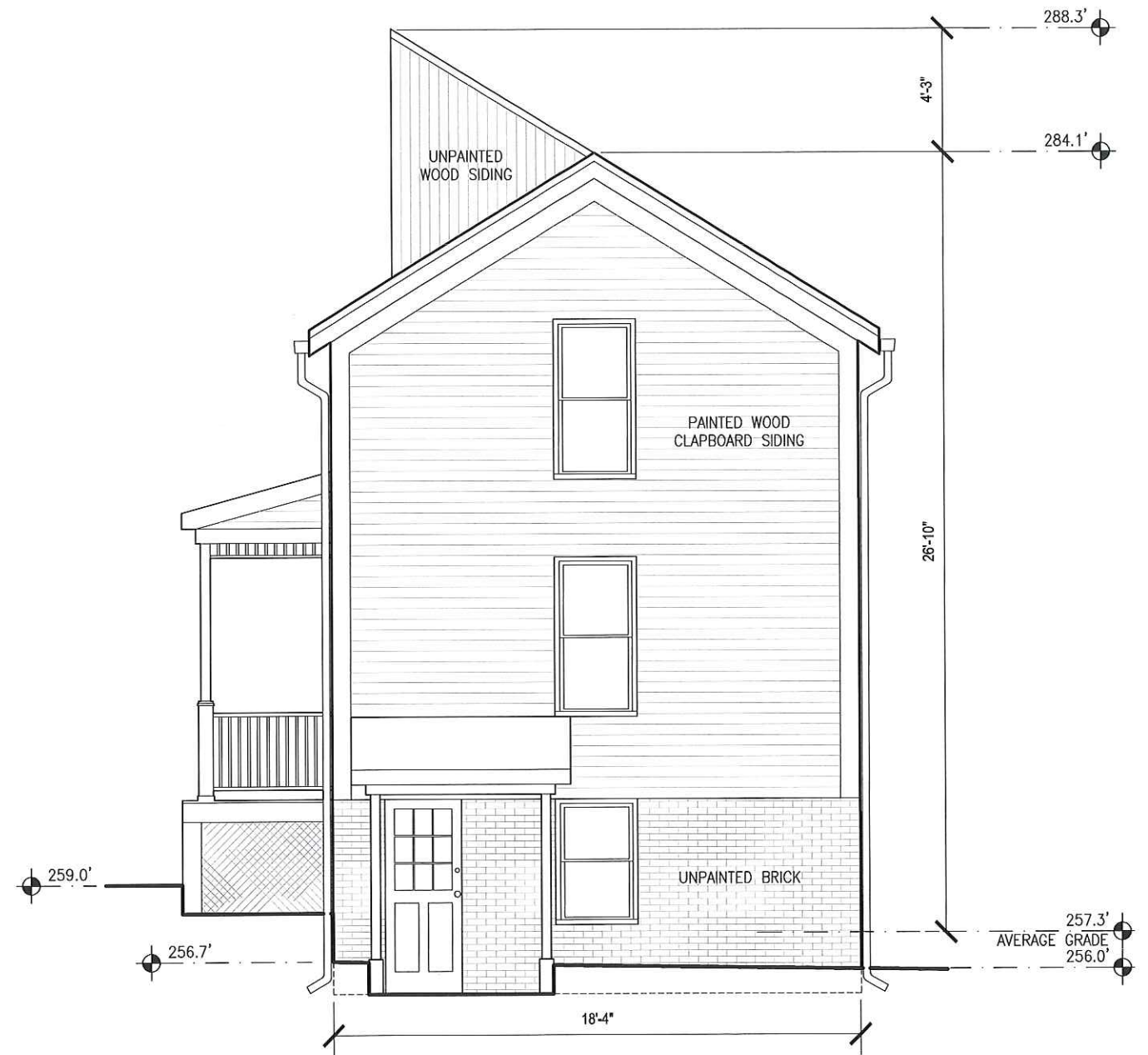
166 WATER STREET STOUGHTON, MA 02072
PHONE: (781)344-2386

GRAPHIC SCALE





1 EXISTING ELEVATION - NORTH
SCALE: 3/16" = 1'



2 EXISTING ELEVATION - EAST (REAR VIEW)
SCALE: 3/16" = 1'

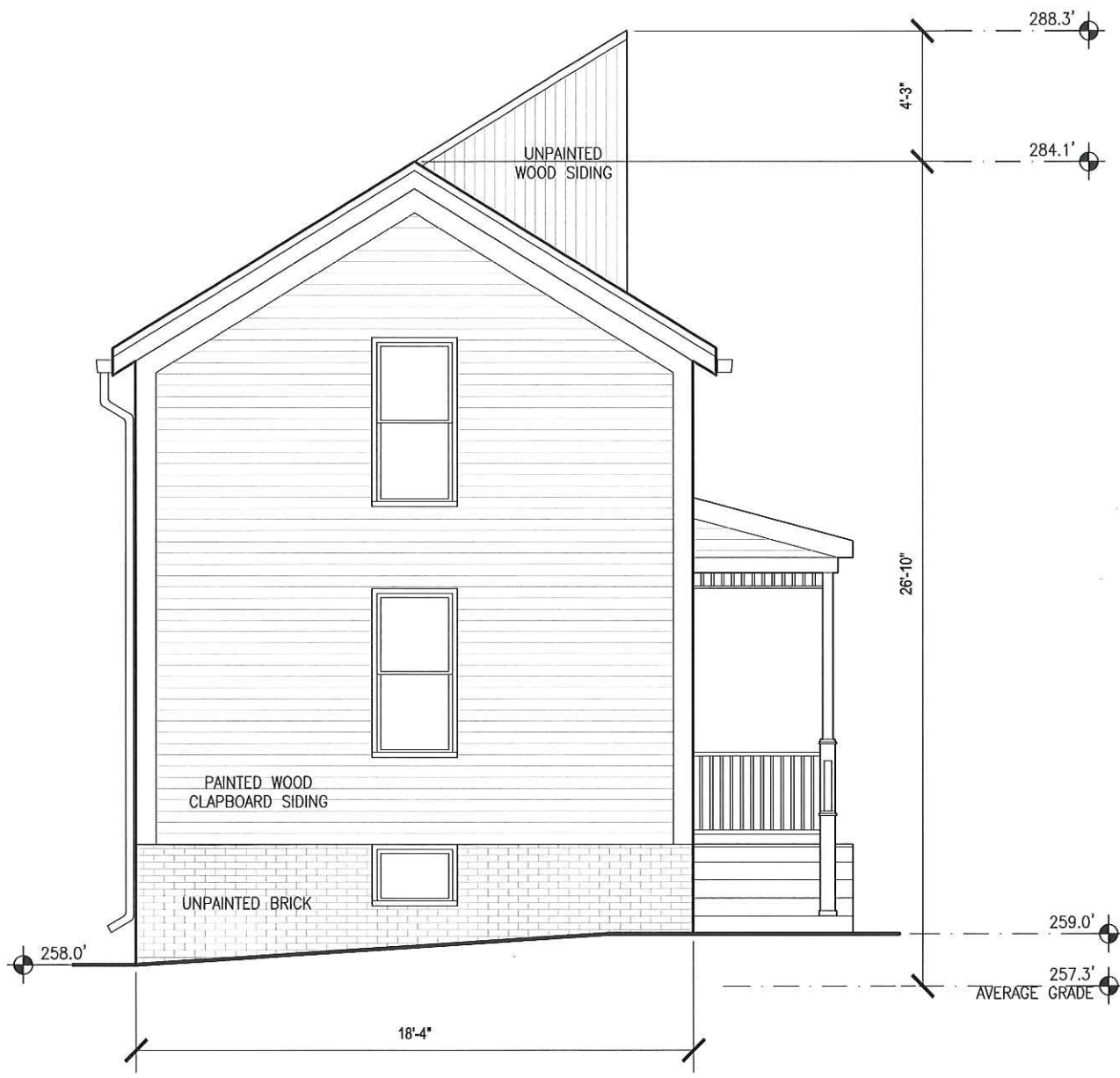
KYU SUNG WOO
ARCHITECTS

488 GREEN ST CAMBRIDGE MA 02139
TEL 617 547 0128 FAX 617 547 9675
KSWA@KSWA.COM WWW.KSWA.COM

7 RC KELLEY
STREET

DEMOLITION
PERMIT
SUPPLEMENTAL
MATERIALS
NOV. 9TH, 2016

D2.1



1 EXISTING ELEVATION - WEST (STREET VIEW)
SCALE: 3/16" = 1'



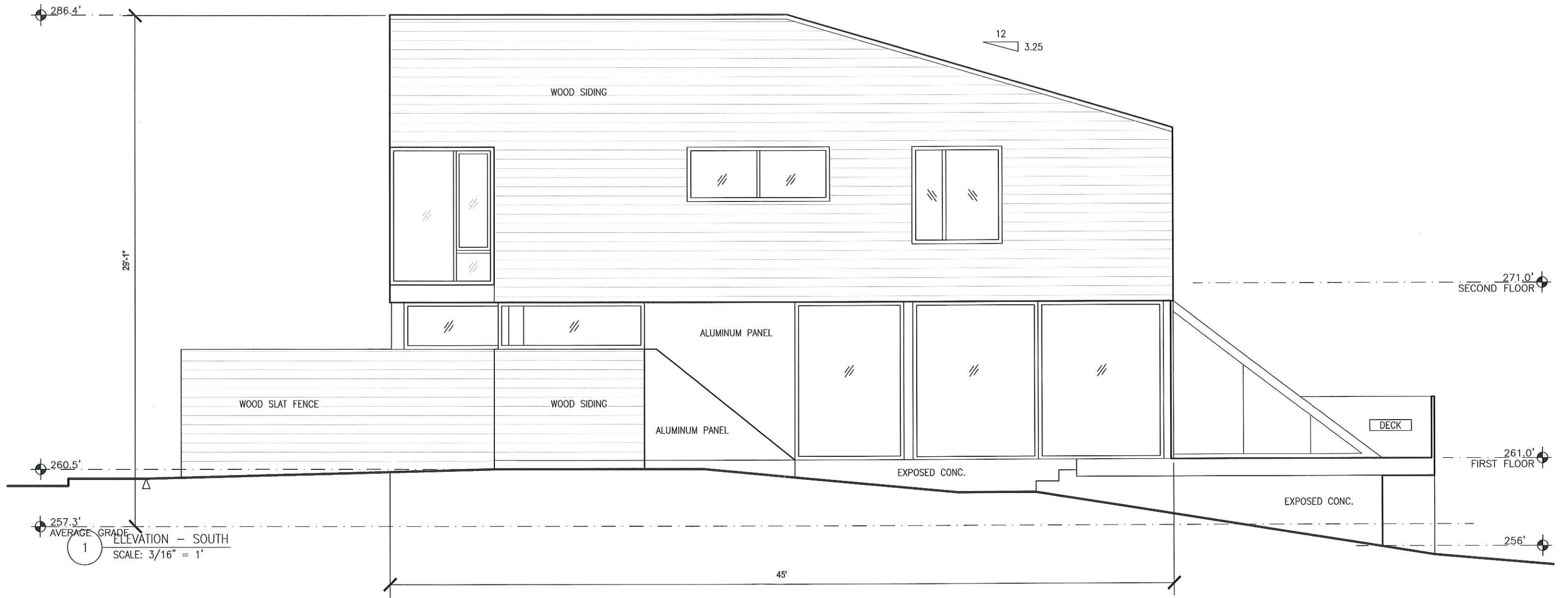
2 EXISTING ELEVATION - SOUTH
SCALE: 3/16" = 1'

KYU SUNG WOO
ARCHITECTS
488 GREEN ST CAMBRIDGE MA 02139
TEL 617 547 0128 FAX 617 547 9675
KSWA@KSWA.COM WWW.KSWA.COM

7 RC KELLEY
STREET

DEMOLITION
PERMIT
SUPPLEMENTAL
MATERIALS
NOV. 9TH, 2016

D2.0



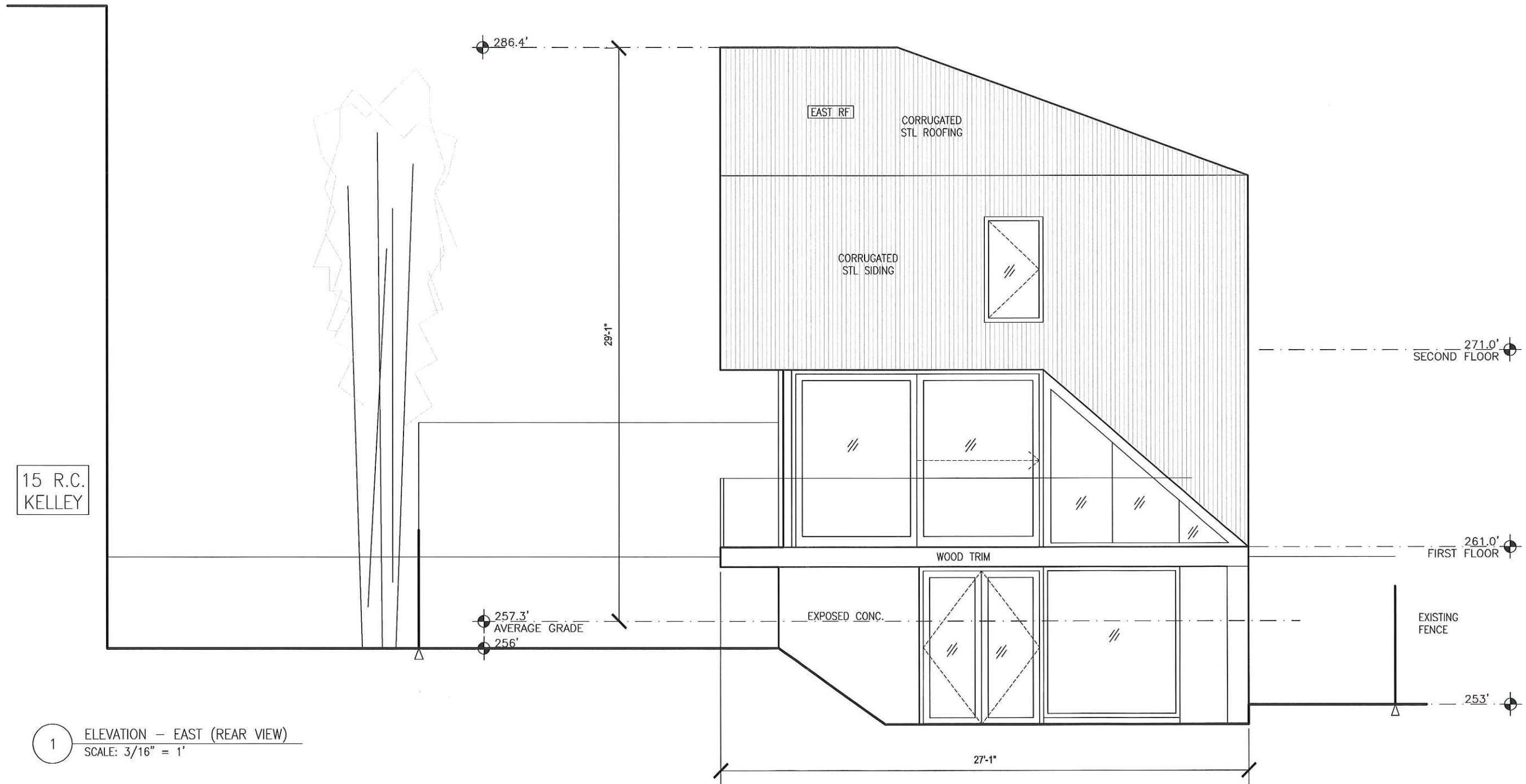
KYU SUNG WOO
ARCHITECTS

488 GREEN ST CAMBRIDGE MA 02139
TEL 617 547 0128 FAX 617 547 9675
KSWA@KSWA.COM WWW.KSWA.COM

7 RC KELLEY
STREET

DEMOLITION
PERMIT
SUPPLEMENTAL
MATERIALS
NOV. 9TH, 2016

A1.1



1 ELEVATION — EAST (REAR VIEW)
SCALE: 3/16" = 1'

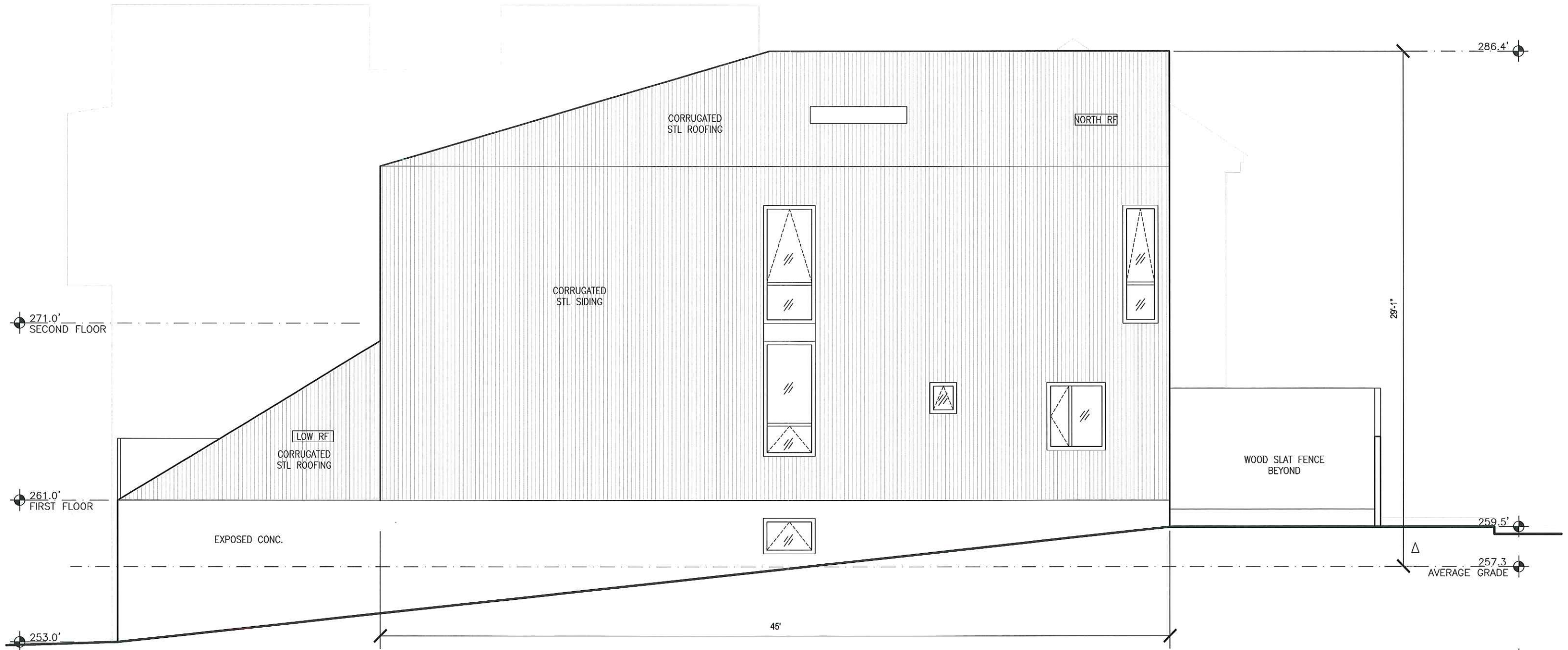
KYU SUNG WOO
ARCHITECTS

488 GREEN ST CAMBRIDGE MA 02139
TEL 617 547 0128 FAX 617 547 9675
KSWA@KSWA.COM WWW.KSWA.COM

7 RC KELLEY
STREET

DEMOLITION
PERMIT
SUPPLEMENTAL
MATERIALS
NOV. 9TH, 2016

A1.2



1 ELEVATION - NORTH
SCALE: 3/16" = 1'

KYU SUNG WOO
ARCHITECTS

488 GREEN ST CAMBRIDGE MA 02139
TEL 617 547 0128 FAX 617 547 9675
KSWA@KSWA.COM WWW.KSWA.COM

7 RC KELLEY
STREET

DEMOLITION
PERMIT
SUPPLEMENTAL
MATERIALS
NOV. 9TH, 2016

A1.3