

Touch & Go

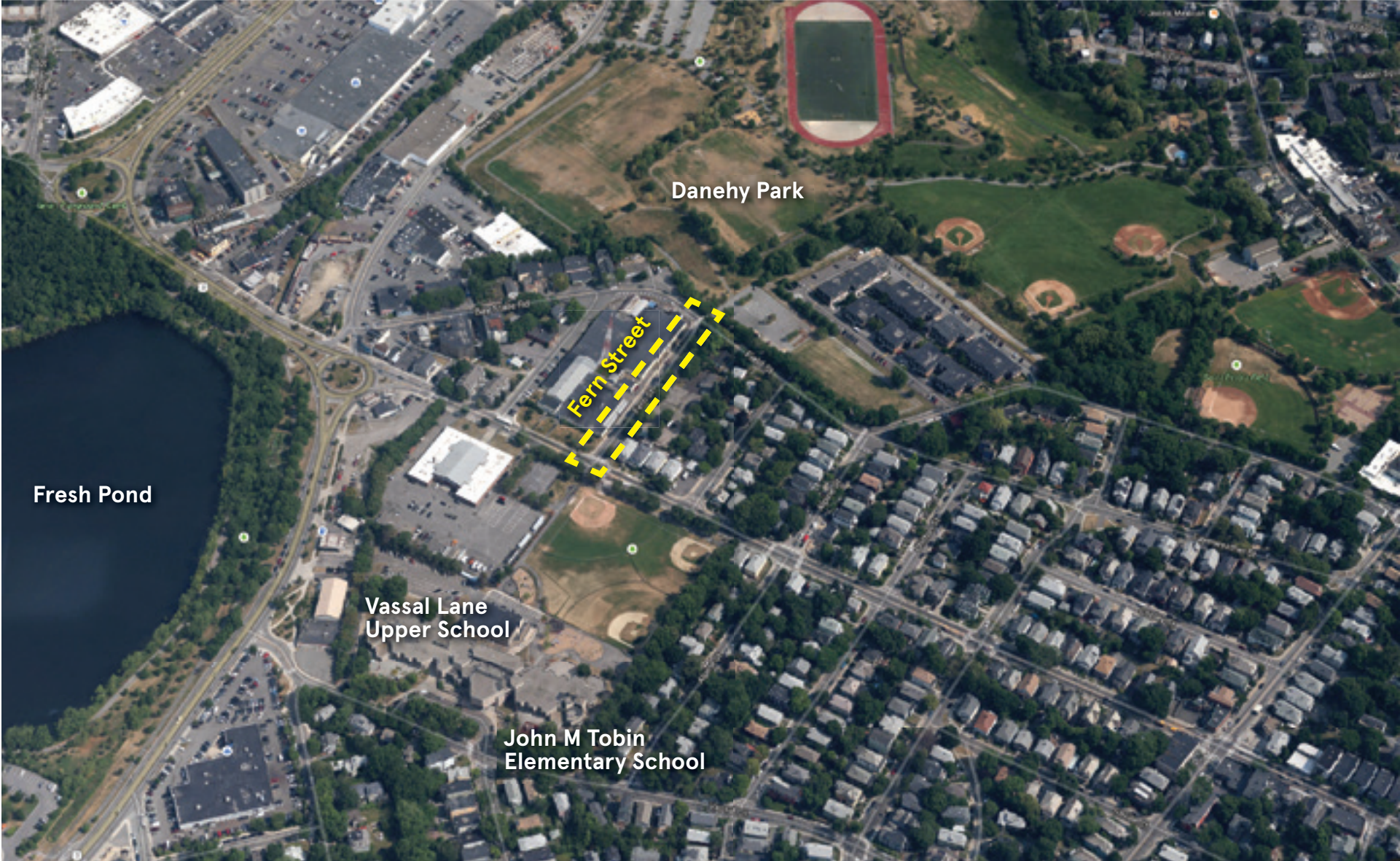
Fern Street, Cambridge, MA

Final Design Presentation

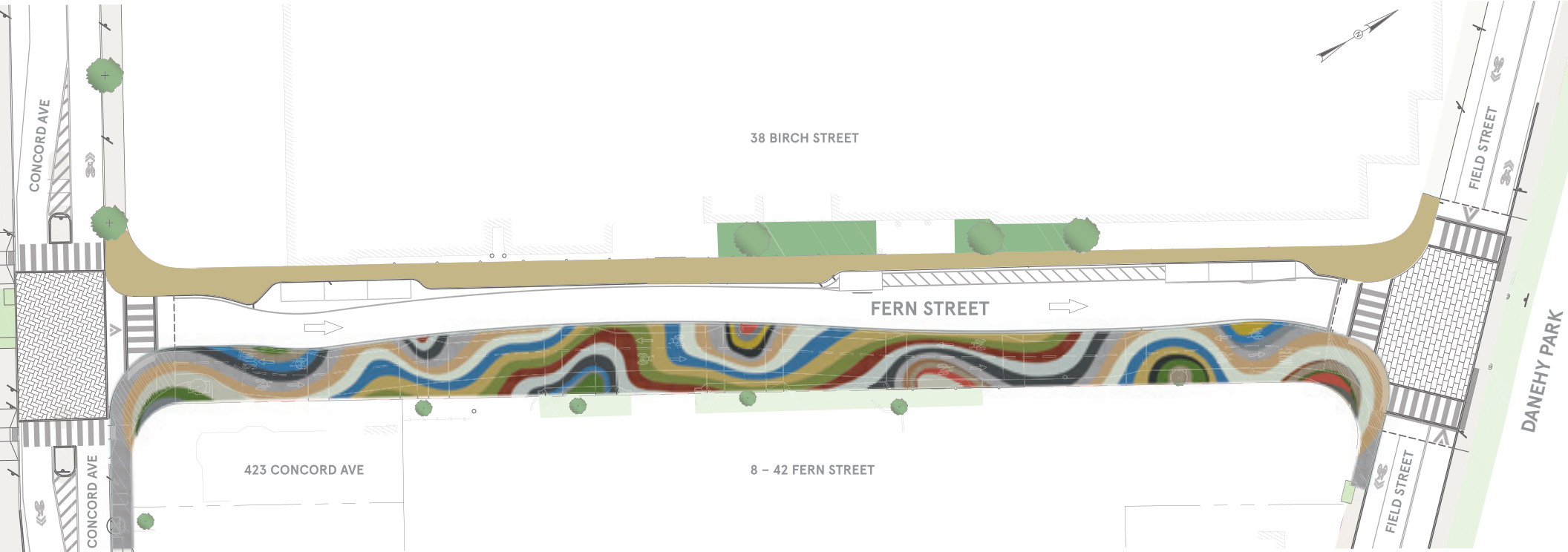
February 19, 2015

Chat Travieso + Yeju Choi

Site Overview

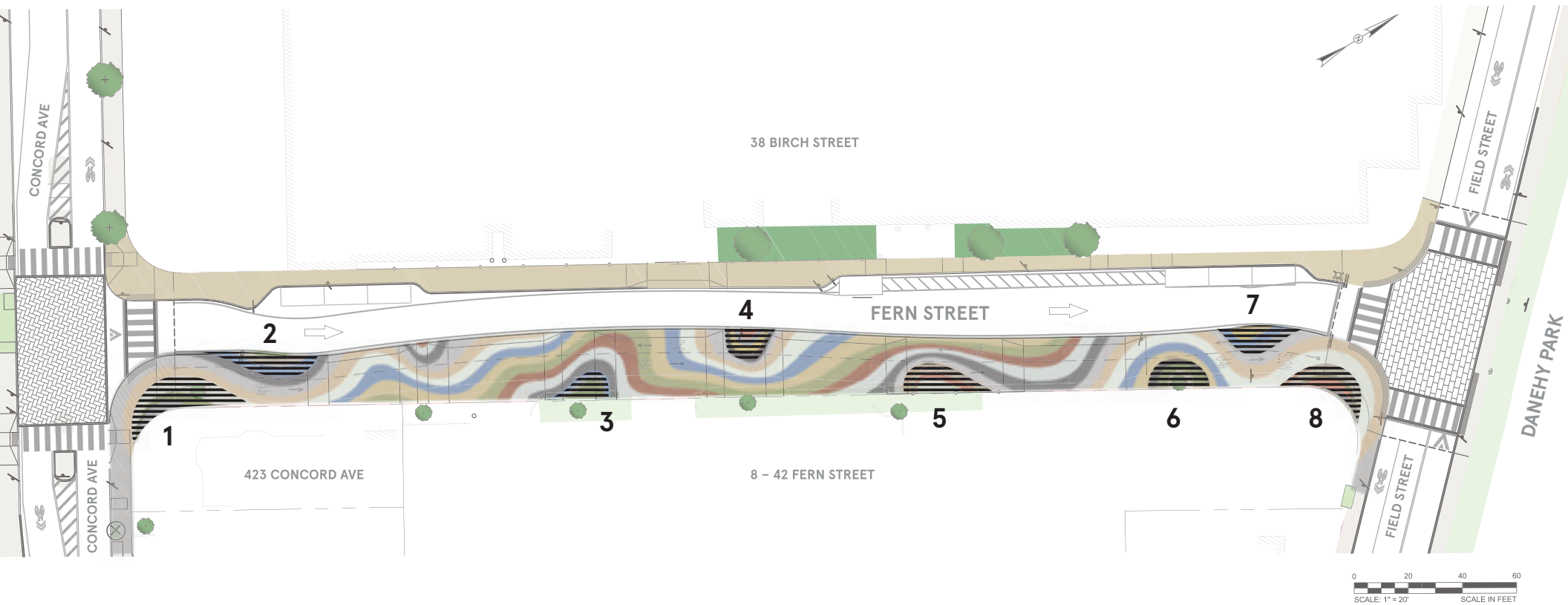


Design Plan



Design

Plan – Sculptural elements



Sculptural elements ("mounds")
with a variety of textures

- 1 - 375 SF; 42" high
- 2 - 235 SF; 20" high
- 3 - 135 SF; 36" high
- 4 - 163 SF; 24" high
- 5 - 231 SF; 27" high

- 6 - 194 SF; 18" high
- 7 - 194 SF; 18" high
- 8 - 250 SF; 36" high

Average height 27.625"

Design

Bird's eye view



Design



Design



Design



Design



Design



Design



Running track surface

Synthetic grass

Wood decking

Corten Steel

Design



Truncated domes

Rubber play surface

Pebbles in concrete

Design

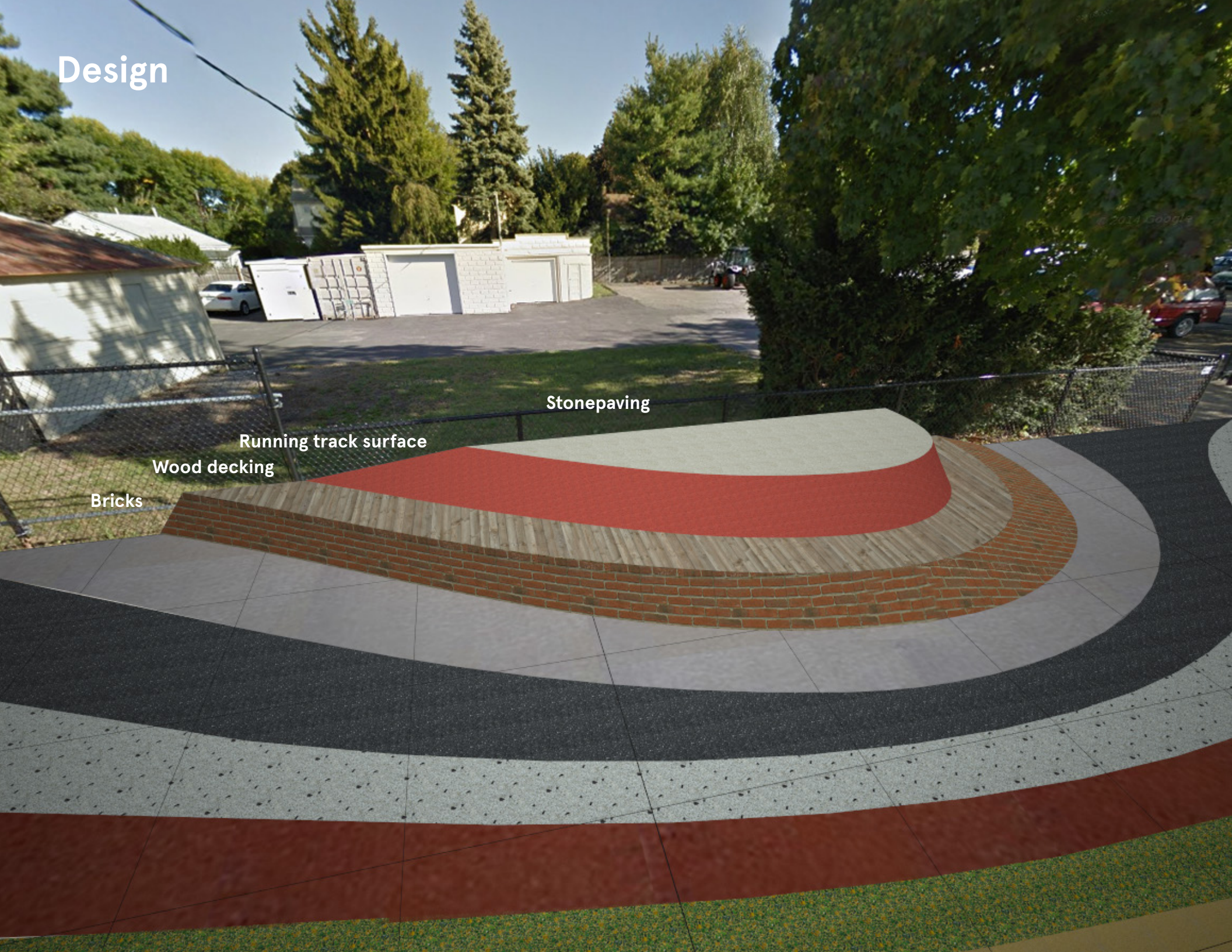


Wood decking

Synthetic grass

Asphalt

Design



Stonepaving

Running track surface

Wood decking

Bricks

Design



Running track surface

Diamond plated steel

Truncated domes

Asphalt

Design



Synthetic grass

Pebbles in
concrete

Rubber
play surface

Bricks

Design



Rubber
play surface

Wood decking

Synthetic grass

Design



Synthetic grass

Permeable Stonepaving

Corten Steel

Design

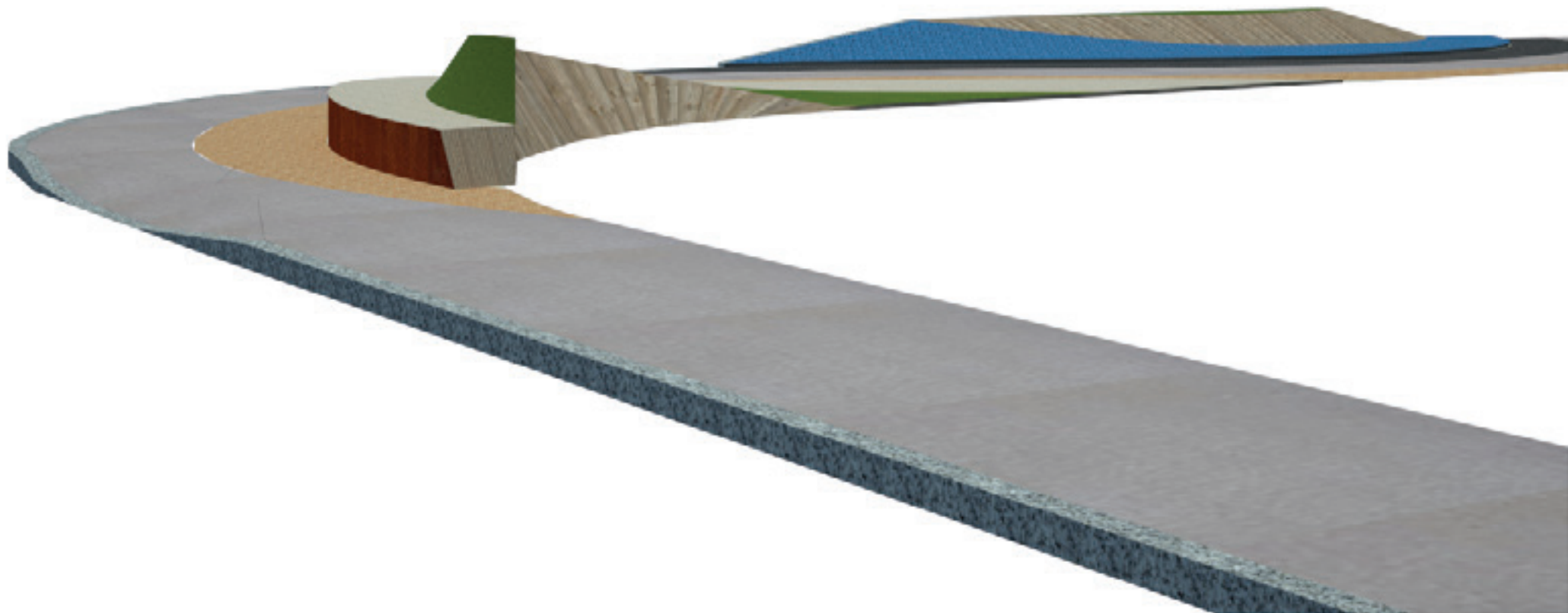


Synthetic grass

Permeable Stonepaving

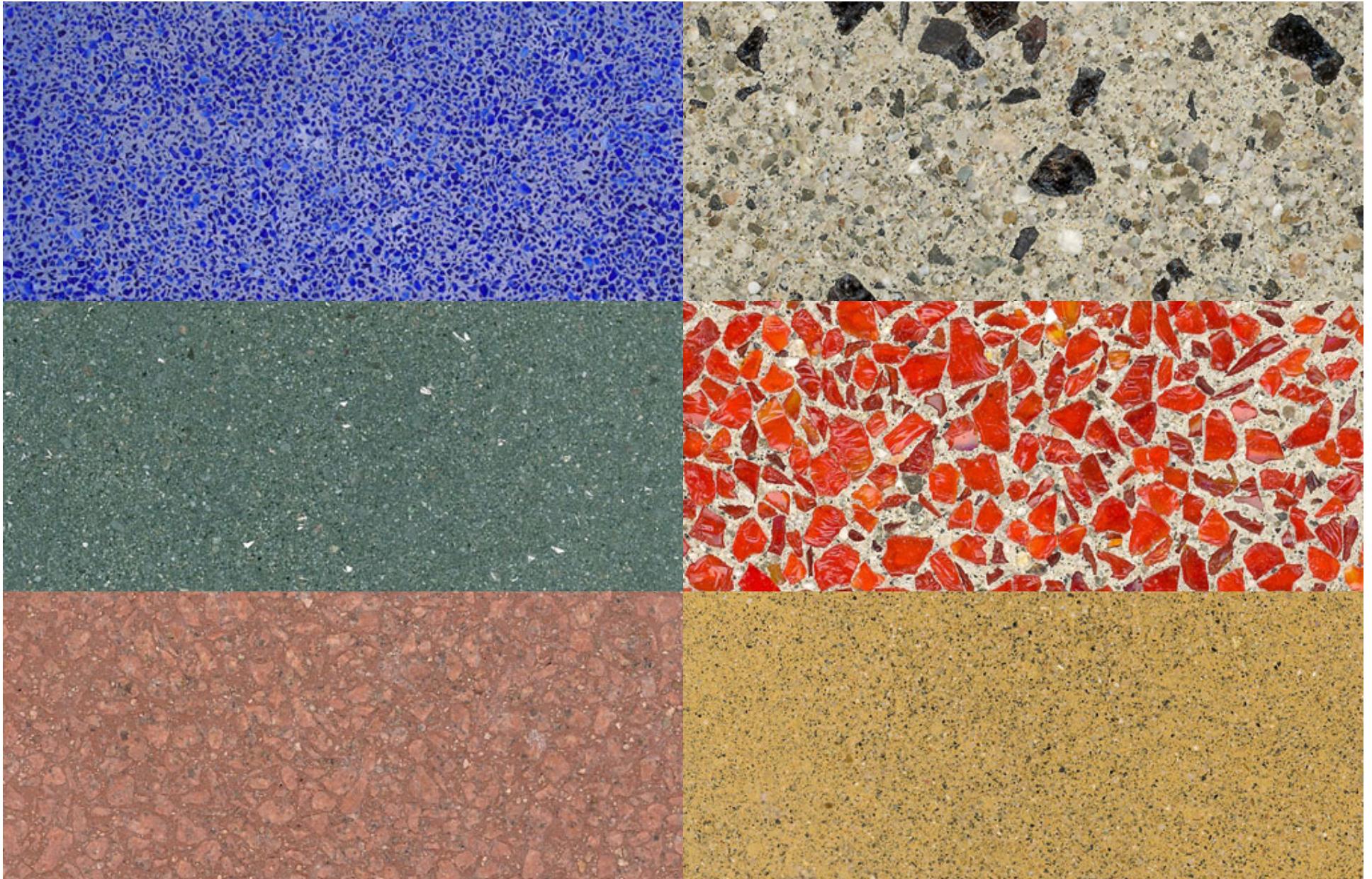
Corten Steel

Wood decking



Materials within 10' clearance + driveways

Lithocrete

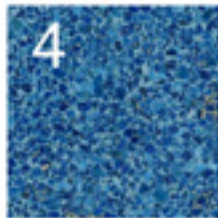


Materials within 10' clearance + driveways

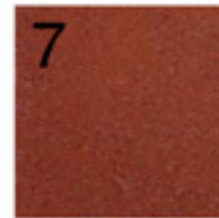
Lithocrete



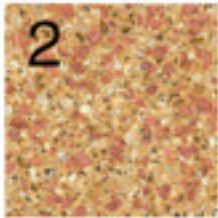
1
No aggregate
Typical sidewalk concrete
Smooth



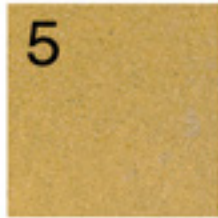
4
Similar to sample 07-055, but
stain concrete Davis Color Euro-
blue (418)
Medium texture



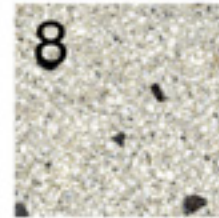
7
No aggregate
Stain concrete Brick Red (160)
Smooth



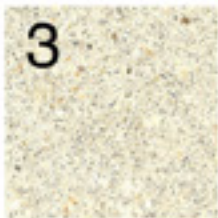
2
Similar to sample 07-236, but
stain concrete Davis Color Lake-
side Brown (6804)
Heavy texture



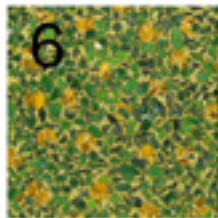
5
Similar to sample 07-140, but
Instead of grey aggregate, make
it yellow rocks
Smooth



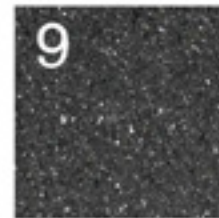
8
Sample 07-318
Light texture



3
Sample 08-043
Light texture



6
Similar to sample 07-215, but mix
in yellow glass as well as green
and stain concrete Davis Color
Palomino (5447)
Light texture



9
Sparkle concrete
Stain concrete David Color
Graphite (8084)
Smooth

Materials within 10' clearance + driveways

Lithocrete



Materials within 10' clearance + driveways

Lithocrete



Materials within 10' clearance + driveways

Lithocrete



Materials within 10' clearance + driveways

Option 1. Lithocrete



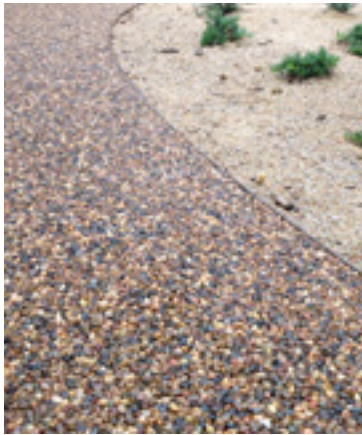
Materials within 10' clearance + driveways

Lithocrete

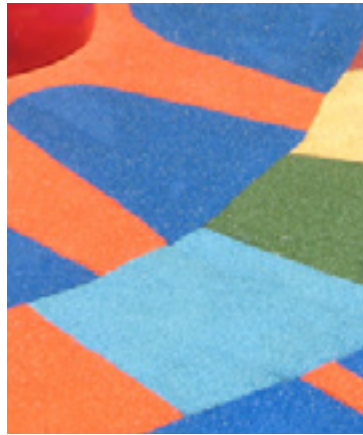


Surface Materials for Sculptural Elements ("mounds")

Permeable
stonepaving



Rubber
play surface



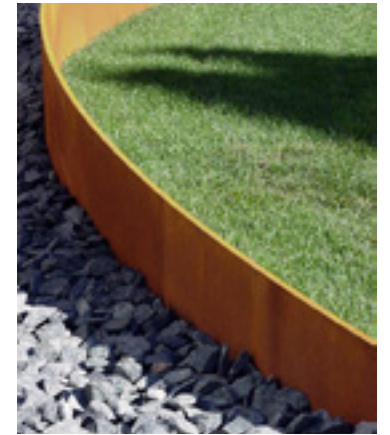
Running track
surface



Brick



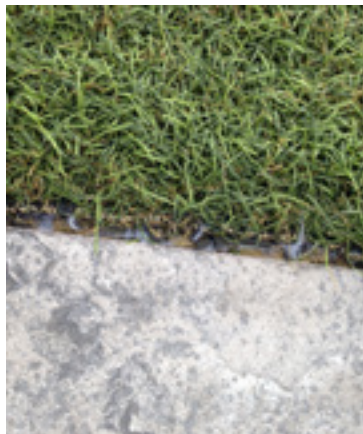
Corten
steel



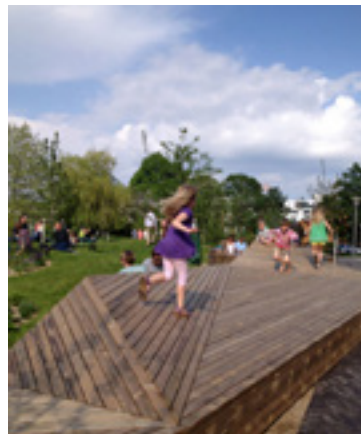
Pebbles
in concrete



Synthetic
grass



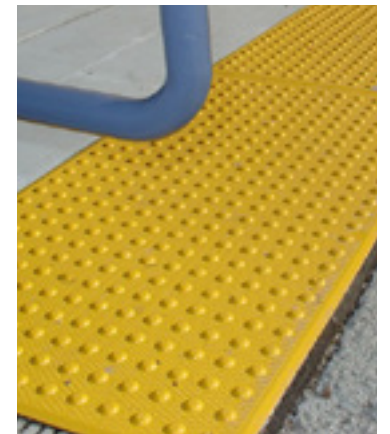
Wood
decking



Diamond plated
steel



Truncated
domes



Surface Materials for Sculptural Elements (“mounds”)

Permeable Stonepaving



Surface Materials for Sculptural Elements ("mounds")

Permeable Stonepaving



Surface Materials for Sculptural Elements (“mounds”)

Rubber play surface



Surface Materials for Sculptural Elements (“mounds”)

Running track surface



Surface Materials for Sculptural Elements ("mounds")

Brick



Surface Materials for Sculptural Elements (“mounds”)

Corten Steel



Surface Materials for Sculptural Elements (“mounds”)

Pebbles embedded in concrete



Surface Materials for Sculptural Elements (“mounds”)

Synthetic grass



Surface Materials for Sculptural Elements (“mounds”)

Wood decking



Surface Materials for Sculptural Elements (“mounds”)

Metal



Surface Materials for Sculptural Elements (“mounds”) Truncated Domes

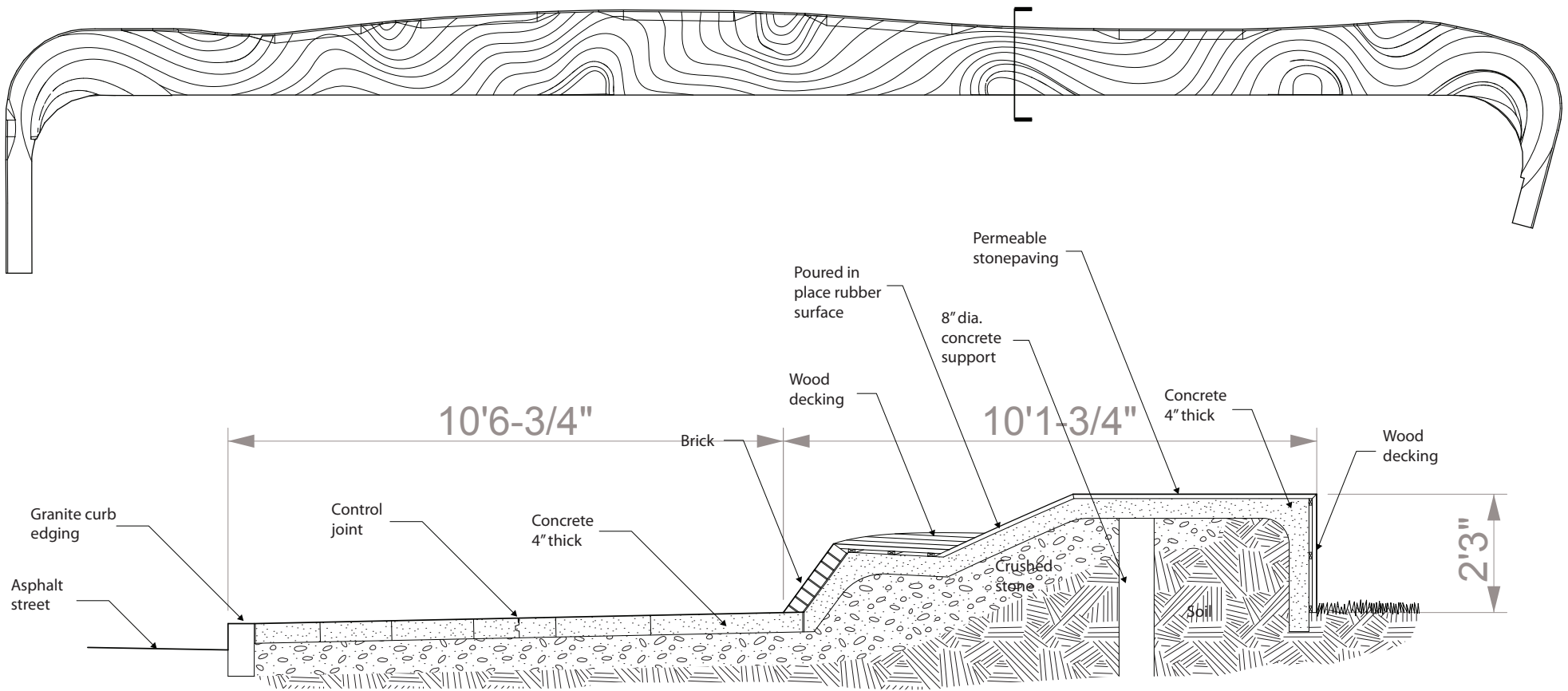


Construction Method for the Sculptural Elements



Construction Method for the Sculptural Elements

Cross Section



Workshop with Tobin students

October 14 – 17, 2014



Workshop with Tobin students

October 14 – 17, 2014



Workshop with Tobin students
October 14 – 17, 2014



Workshop with Tobin students
October 14 – 17, 2014



Workshop with Tobin students

October 14 – 17, 2014



Workshop with Tobin students
October 14 – 17, 2014



Workshop with Tobin students
October 14 – 17, 2014



Workshop with Tobin students

October 14 – 17, 2014



Workshop with Tobin students
October 14 – 17, 2014



Workshop with Tobin students
October 14 – 17, 2014



Workshop with Tobin students

October 14 – 17, 2014



Workshop with Tobin students

October 14 – 17, 2014



Workshop with Tobin students
October 14 - 17, 2014



Workshop with Tobin students

October 14 - 17, 2014



Workshop with Tobin students
October 14 - 17, 2014



Workshop with Tobin students

October 14 – 17, 2014



Workshop with Tobin students
October 14 – 17, 2014



Workshop with Tobin students

October 14 – 17, 2014



Workshop with Tobin students

October 14 – 17, 2014



