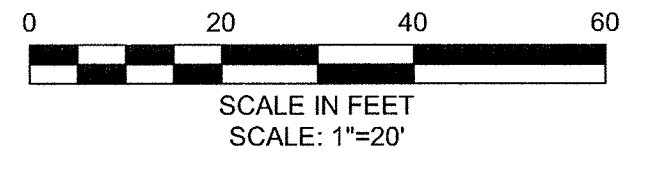
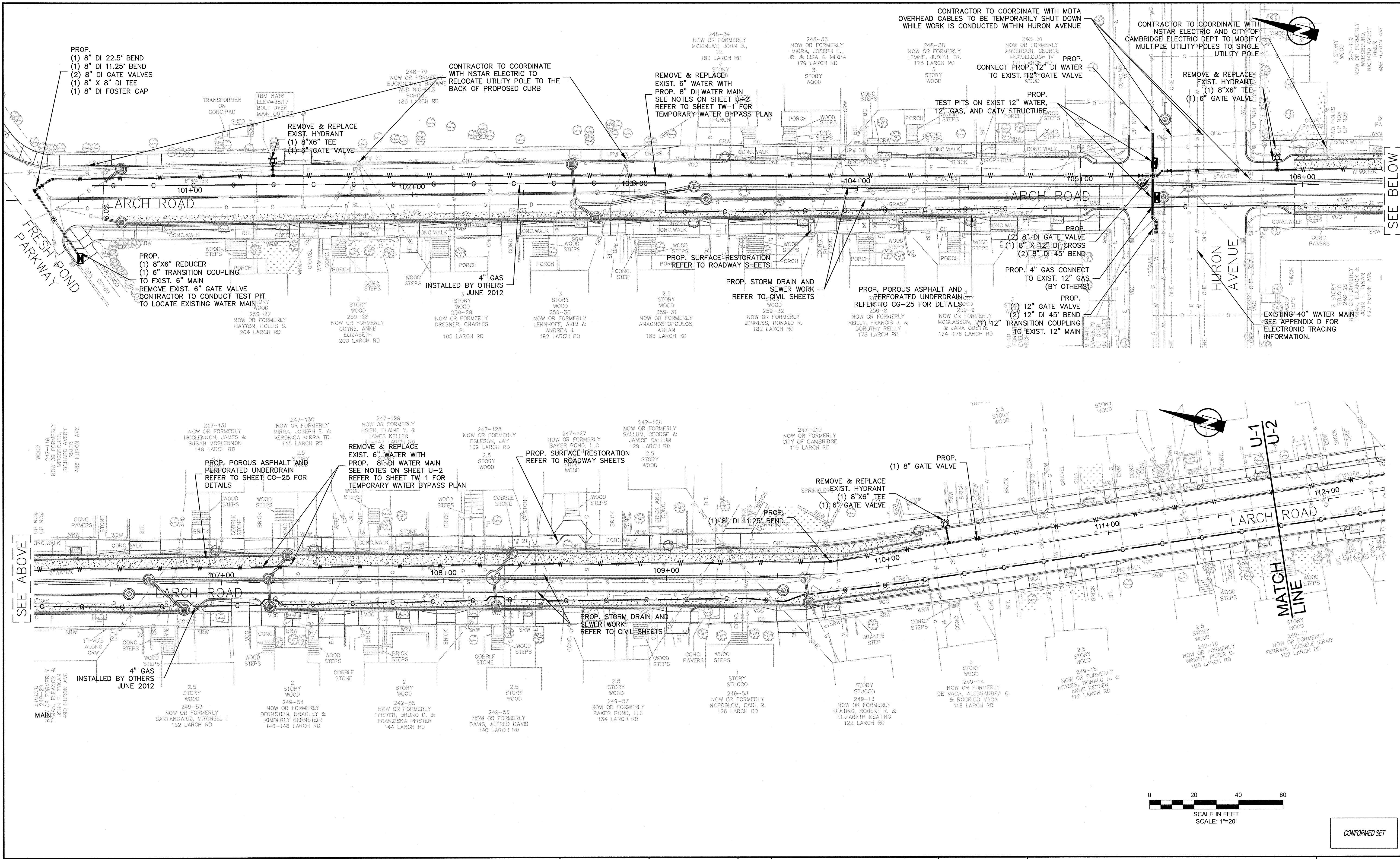


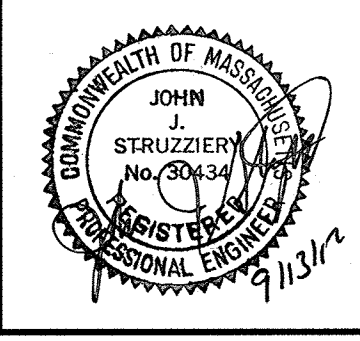
PLOT DATE=9/4/2012 12:23:26 PM USER=KYLE LANGLOIS FILENAME=G:\clients\cambridge MA\20110101-A - Huron A2.8 Drawings\_Conformed\_Larch\_utility\_coordination - (Conformed).dwg



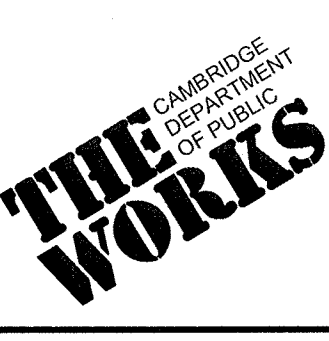
CONFORMED SET

**KLEINFELDER** ■ **SEA**  
Bright People. Right Solutions.  
MANCHESTER, NEW HAMPSHIRE    ROCKY HILL, CONNECTICUT  
CAMBRIDGE, MASSACHUSETTS

**MWH**  
285 SUMMER STREET, SUITE 200  
BOSTON, MASSACHUSETTS 02210  
TEL: (617) 314-7100

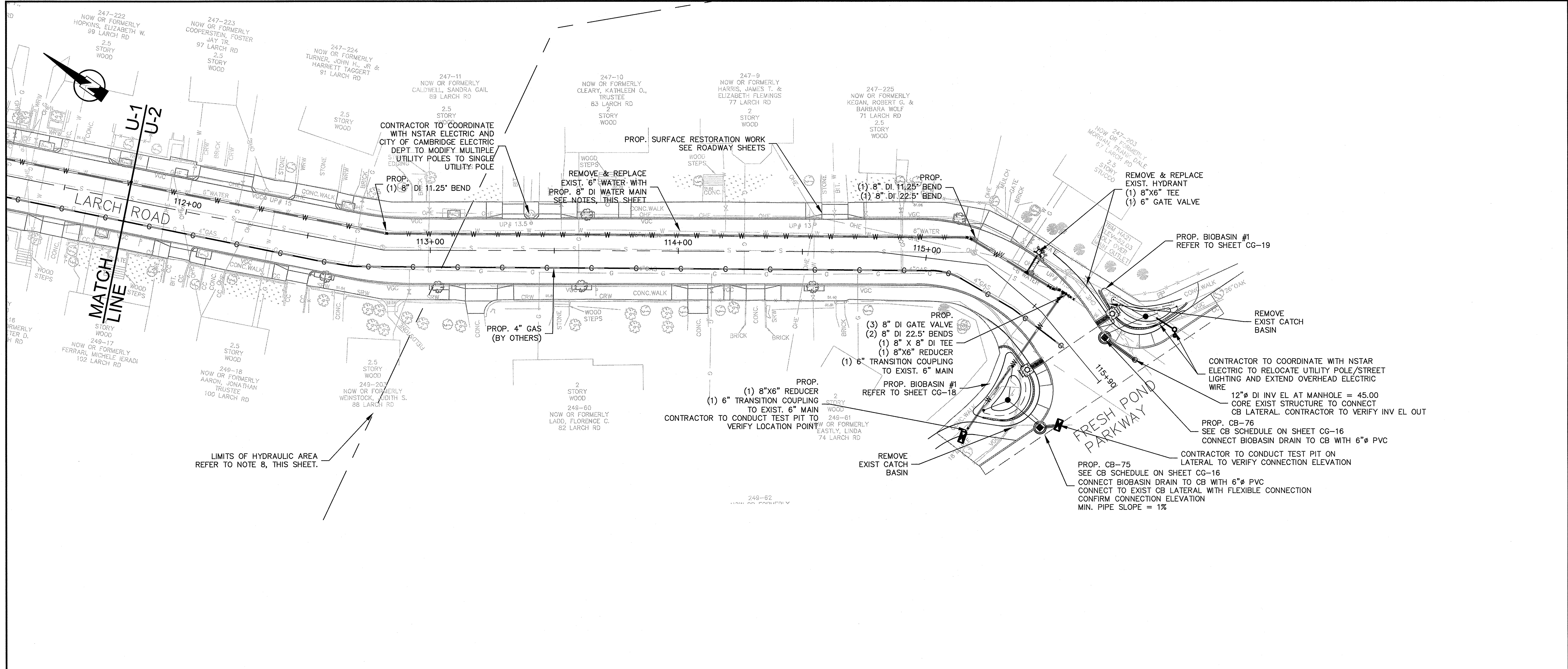


Scale	AS NOTED			
Date	SEPTEMBER 2012			
Job No.	20110101-A			
Designed by	KJL			
Drawn by	KJL			
Checked by	CMC	No.	Description	Date
Approved by	BJM		REVISIONS	



Client	CITY OF CAMBRIDGE, MASSACHUSETTS	Sheet	U-1
Project	HURON A SEWER SEPARATION PROJECT Contract No. 8A	File No.	
Drawing	CIVIL UTILITY COORDINATION LARCH ROAD - STA 100+00 TO 111+75		



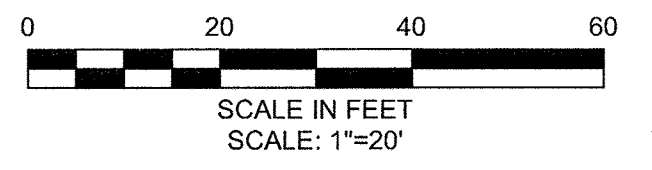


- NOTES:
1. THE CAMBRIDGE WATER DEPARTMENT (CWD) WILL NOT ISSUE NEW WATER CONSTRUCTION PERMITS UNTIL ALL REQUIREMENTS FOR PREVIOUS (I.E., INITIAL CWD PERMIT) CWD PERMITS ARE MET. THESE REQUIREMENTS INCLUDE ACCURATE AND LEGIBLE SWING THE DIMENSIONS TO ALL NEW WATER MAIN GATE VALVES, TEE'S AND ELBOW'S. REQUIRED CWD "SIGN OFF'S" ON THE CONTRACTOR'S COPY OF THE CWD EXECUTED PERMIT (WHEN PERMITTED WORK IS COMPLETED), TEST DOCUMENTATION THAT INCLUDES MASSACHUSETTS STATE CERTIFIED INITIAL CHLORINATION AND BACTERIA TESTING OF NEW WATER MAIN WORK, AND PRESSURE TEST RESULTS OF NEW WATER MAIN WORK. THE CONTRACTOR IS HEREBY ADVISED THAT THE CWD WILL NOT BE RESPONSIBLE FOR THE CONTRACTOR'S SLIP IN PROJECT SCHEDULE IF THESE REQUIREMENTS FOR PERMITS ARE NOT FOLLOWED.
  2. CONTRACTOR SHALL CONNECT WATER SERVICES TO NEW WATER MAIN. EXISTING LEAD SERVICES SHALL BE REMOVED AND REPLACED TO THE BACK OF SIDEWALK. SERVICES UNDER 1" IN DIAMETER SHALL BE REPLACED TO THE BACK OF SIDEWALK, AS SHOWN IN TABLE 1 BELOW, THE CITY OF CAMBRIDGE WATER DEPARTMENT HAS INDICATED THAT THERE ARE APPROXIMATELY 6 SERVICES OF LEAD, UNKNOWN MATERIAL, AND/OR 3/4" SIZE WATER SERVICES ON LARCH ROAD. ADDITIONAL LOCATIONS TO BE VERIFIED BY CONTRACTOR IN THE FIELD.
  3. FOR WATER SERVICES GREATER THAN 1.5" IN SIZE, CONTRACTOR TO INSTALL GATE VALVE AT THE MAIN AND AT THE BACK OF SIDEWALK. THE CITY OF CAMBRIDGE WATER DEPARTMENT HAS INDICATED THAT THERE ARE 0 SERVICES GREATER THAN 1.5" IN DIAMETER. ADDITIONAL LOCATIONS TO BE VERIFIED BY CONTRACTOR IN THE FIELD.
  4. UNLESS OTHERWISE NOTED, WATER MAINS SHALL BE INSTALLED WITH MINIMUM 5.0' COVER. WATER MAIN ELEVATIONS LISTED IN THE DRAWINGS REFER TO TOP OF WATER MAIN.
  5. CONTRACTOR TO PROVIDE 1" CHLORINATION TAP AT ALL LOCATIONS WHERE PROPOSED WATER MAIN CONNECTS TO EXISTING WATER MAIN.
  6. WATER GATES, BOXES, HYDRANTS SHALL BE INSTALLED TO EXISTING GRADE AND ADJUSTED TO FINAL GRADE ELEVATIONS DURING SURFACE RESTORATION WORK.
  7. ALL NEW AND RELOCATED HYDRANTS TO BE FLOW TESTED IN COORDINATION WITH THE CWD AND PAINTED PER THE CWD SPECIFICATIONS. CONTRACTOR TO COORDINATE WITH CWD FOR PAINT SPECIFICATIONS/COLOR.
  8. PROPOSED MANHOLES AND CATCH BASINS SOUTH OF THE HYDRAULIC AREA ARE SHOWN ON THE UTILITY COORDINATION SHEETS. ALL OTHER PROPOSED MANHOLES AND CATCH BASINS ARE DETAILED ON THE CIVIL SHEETS. ALL CATCH BASIN CONNECTIONS TO PROPOSED BIOBASINS ARE SHOWN ON THE UTILITY COORDINATION SHEETS.

EXISTING WATER SERVICE INFORMATION

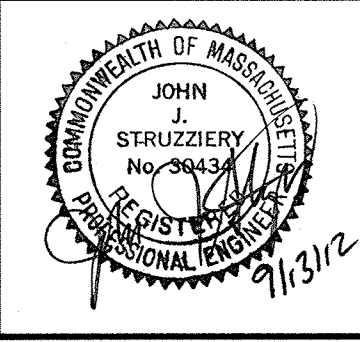
Table 1 - Larch Road

Street #	Size	Material
107-109	1"	Unknown
122-124	3/4"	Lead
175	3/4"	Unknown
182-184	3/4"	Copper
194-196	3/4"	Copper
202-204	3/4"	Copper



CONFORMED SET

PLOT DATE=04/20/12 12:24:16 PM USER=KYLE LANGLOIS FILENAME=G:\clients\cambridge\MA20110101-01-A - Huron A2.8 Drawings\Conformed\_Larch\_utility\_coordination - (Conformed).dwg



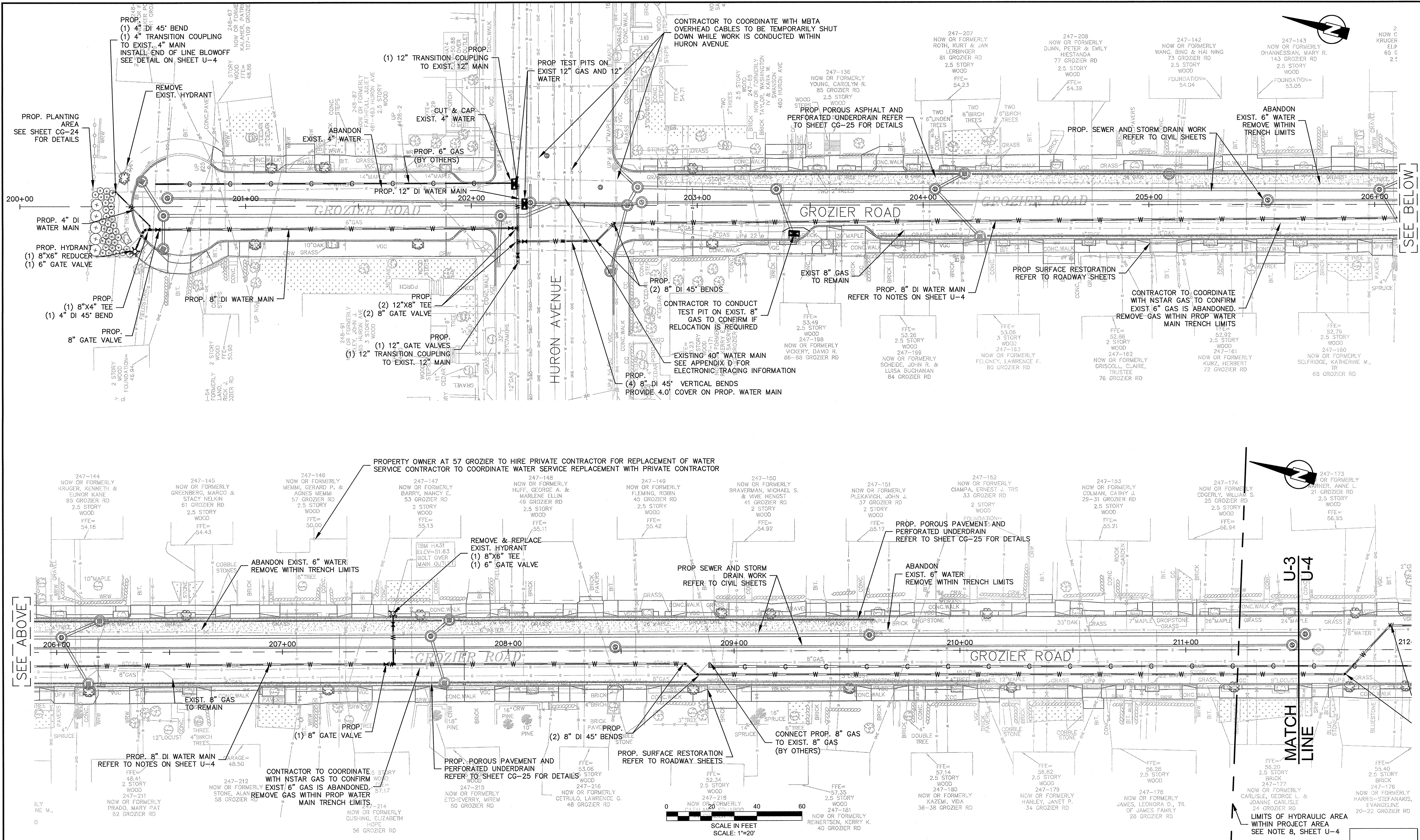
Scale	AS NOTED		
Date	SEPTEMBER 2012		
Job No.	20110101-A		
Designed by	KJL		
Drawn by	KJL		
Checked by	CMC	No.	Description
Approved by	BJM		REVISIONS



Client	CITY OF CAMBRIDGE, MASSACHUSETTS	Sheet	U-2
Project	HURON A SEWER SEPARATION PROJECT	File No.	
	Contract No. 8A		
Drawing	CIVIL UTILITY COORDINATION		
	LARCH ROAD - STA 111+75 TO 115+90		



PLOT DATE=9/4/2012 10:12:57 AM USER=KYLE LANGLOIS FILENAME=G:\clients\cambridge\MA20110101-01-A - Huron A2.8 Drawings\_Conformed\_Grozier\_utility\_coordination - (Conformed).dwg



SEE ABOVE

SEE BELOW

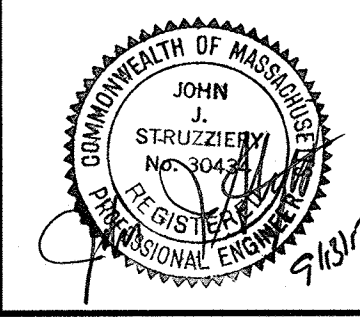
MATCH LINE U-3 U-4

LIMITS OF HYDRAULIC AREA WITHIN PROJECT AREA SEE NOTE 8, SHEET U-4

CONFORMED SET

**KLEINFELDER S E A**  
 Bright People. Right Solutions.  
 MANCHESTER, NEW HAMPSHIRE    ROCKY HILL, CONNECTICUT  
 CAMBRIDGE, MASSACHUSETTS

**MWH**  
 285 SUMMER STREET, SUITE 200  
 BOSTON, MASSACHUSETTS 02210  
 TEL: (617) 314-7100



Scale	AS NOTED
Date	SEPTEMBER 2012
Job No.	20110101-A
Designed by	KJL
Drawn by	KJL
Checked by	CMC
Approved by	BJM
No.	
Description	
Date	
REVISIONS	



Client	CITY OF CAMBRIDGE, MASSACHUSETTS
Project	HURON A SEWER SEPARATION PROJECT Contract No. 8A
Drawing	CIVIL UTILITY COORDINATION GROZIER ROAD - STA 200+00 TO 211+50

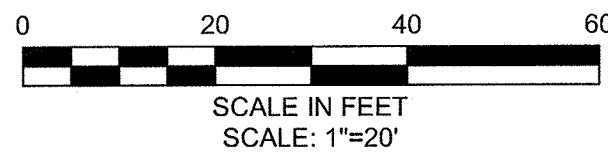
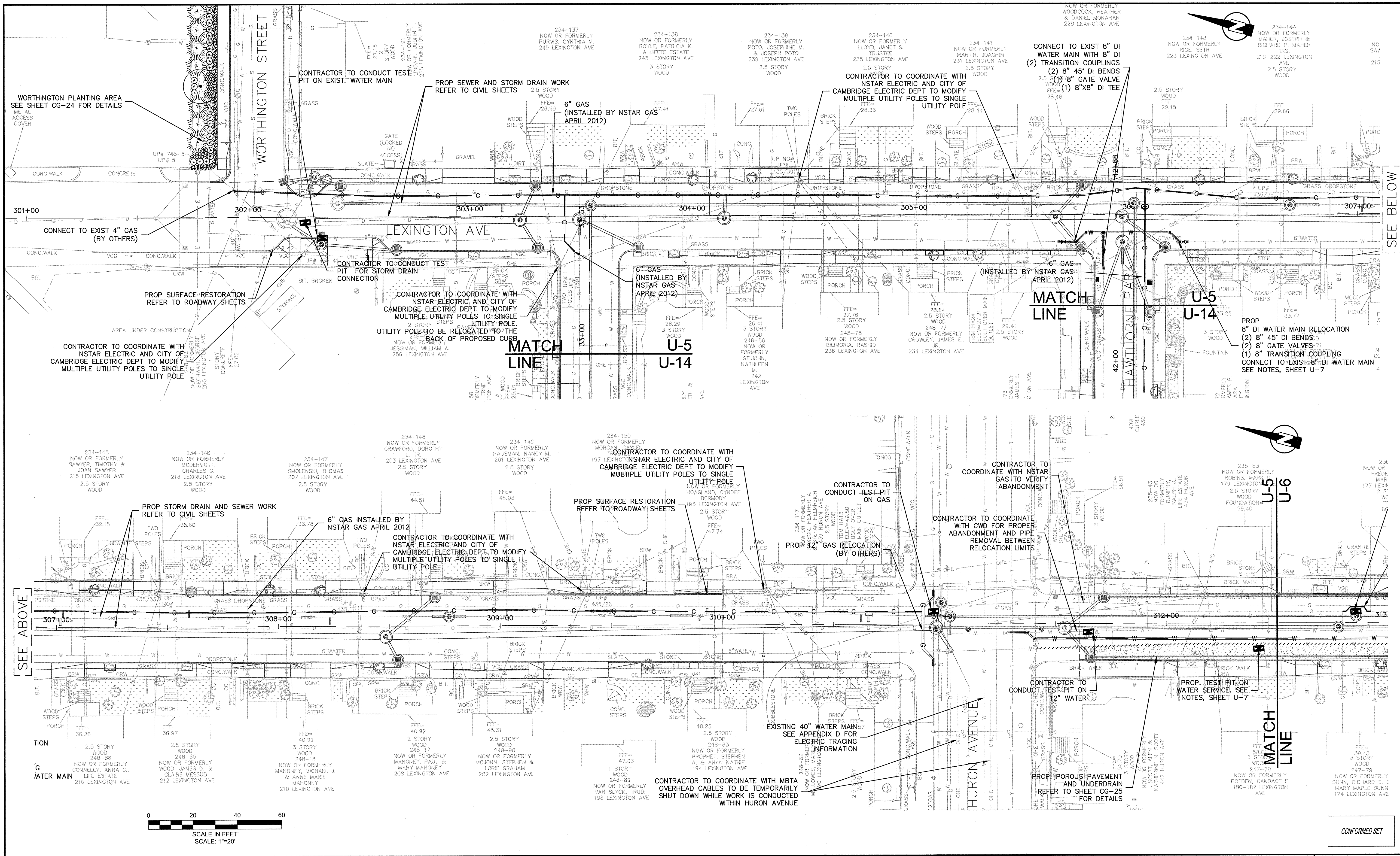
Sheet	U-3
File No.	







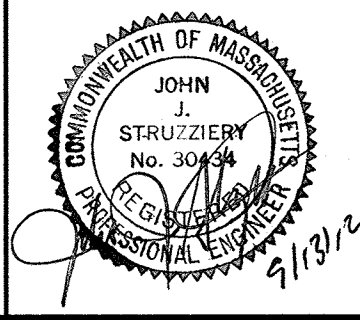
PLOT DATE=9/4/2012 1:43:14 PM USER=KYLE LANGLOIS FILENAME=G:\clients\Cambridge MA\201010.01-A - Huron A2.8 Drawings - Conformed\Lexington\_utility\_coordination - (Conformed).dwg



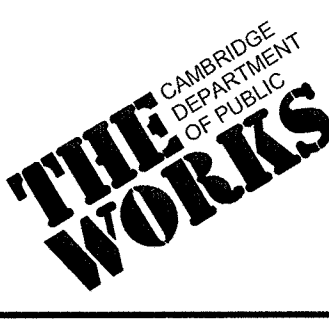
CONFORMED SET

**KLEINFELDER SEA**  
Bright People. Right Solutions.  
MANCHESTER, NEW HAMPSHIRE    ROCKY HILL, CONNECTICUT  
CAMBRIDGE, MASSACHUSETTS

**MWH**  
285 SUMMER STREET, SUITE 200  
BOSTON, MASSACHUSETTS 02210  
TEL: (617)314-7100



Scale	AS NOTED		
Date	SEPTEMBER 2012		
Job No.	2011010.01-A		
Designed by	KJL		
Drawn by	KJL		
Checked by	CMC	No.	Description
Approved by	BJM		Date

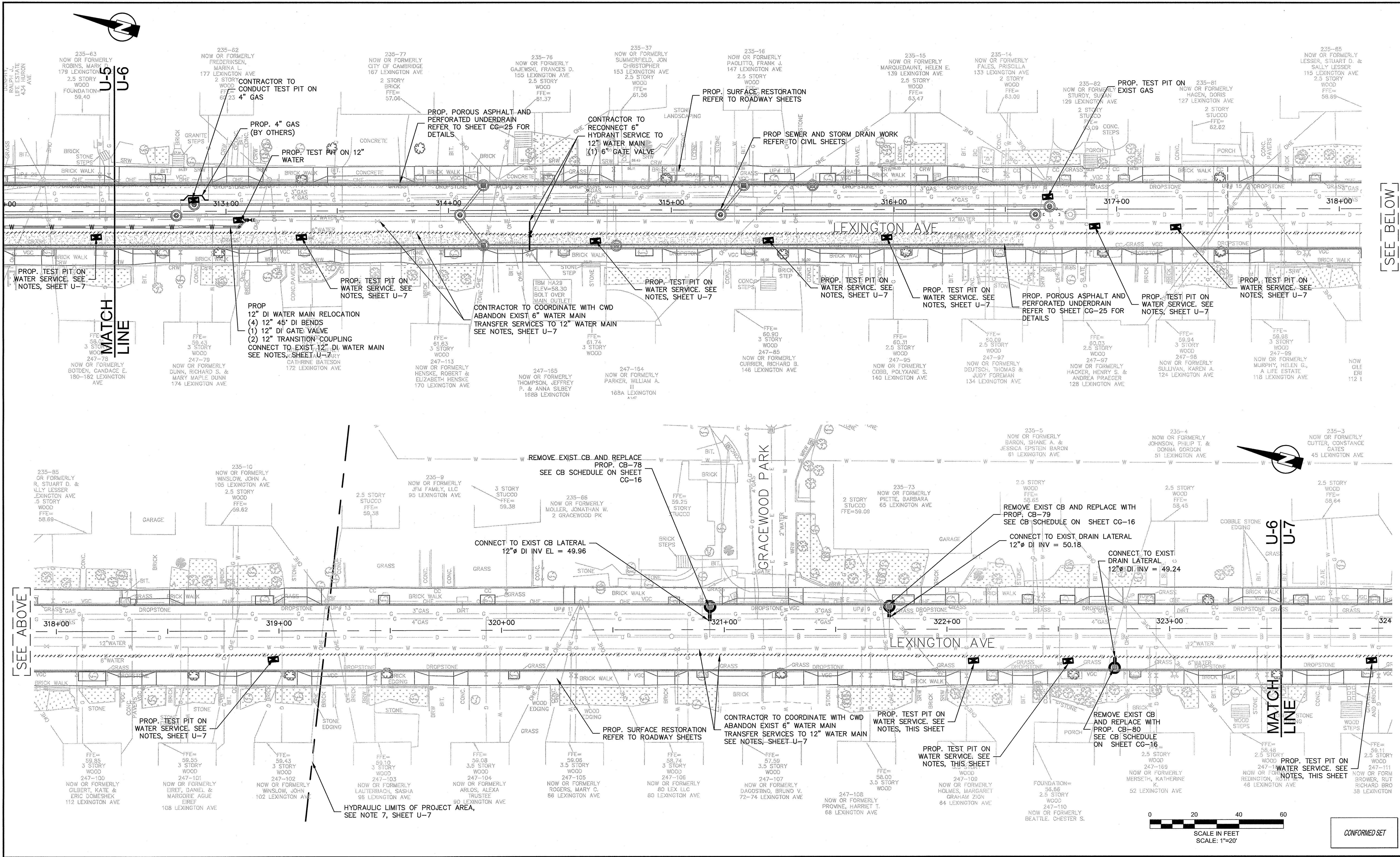


Client	CITY OF CAMBRIDGE, MASSACHUSETTS
Project	HURON A SEWER SEPARATION PROJECT Contract No. 8A
Drawing	CIVIL UTILITY COORDINATION LEXINGTON AVENUE - STA 301+00 TO 312+50

Sheet	U-5
File No.	



PLOT DATE=9/14/2012 1:44:52 PM USER=KYLE LANGLOIS FILENAME=G:\clients\Cambridge\MA20110101-A - Huron A2.8 Drawings\Conformed\Lexington\_utility\_coordination - (Conformed).dwg

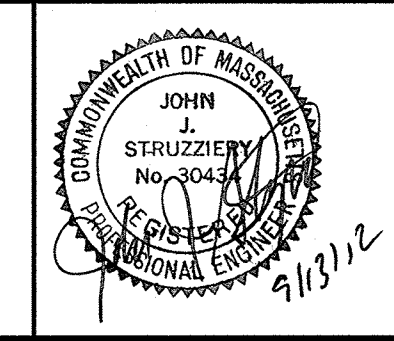


SEE ABOVE

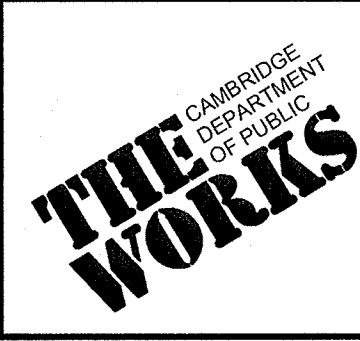
SEE BELOW

**KLEINFELDER S E A**  
Bright People. Right Solutions.  
MANCHESTER, NEW HAMPSHIRE    ROCKY HILL, CONNECTICUT  
CAMBRIDGE, MASSACHUSETTS

**MWH**  
285 SUMMER STREET, SUITE 200  
BOSTON, MASSACHUSETTS 02210  
TEL: (617) 514-7100



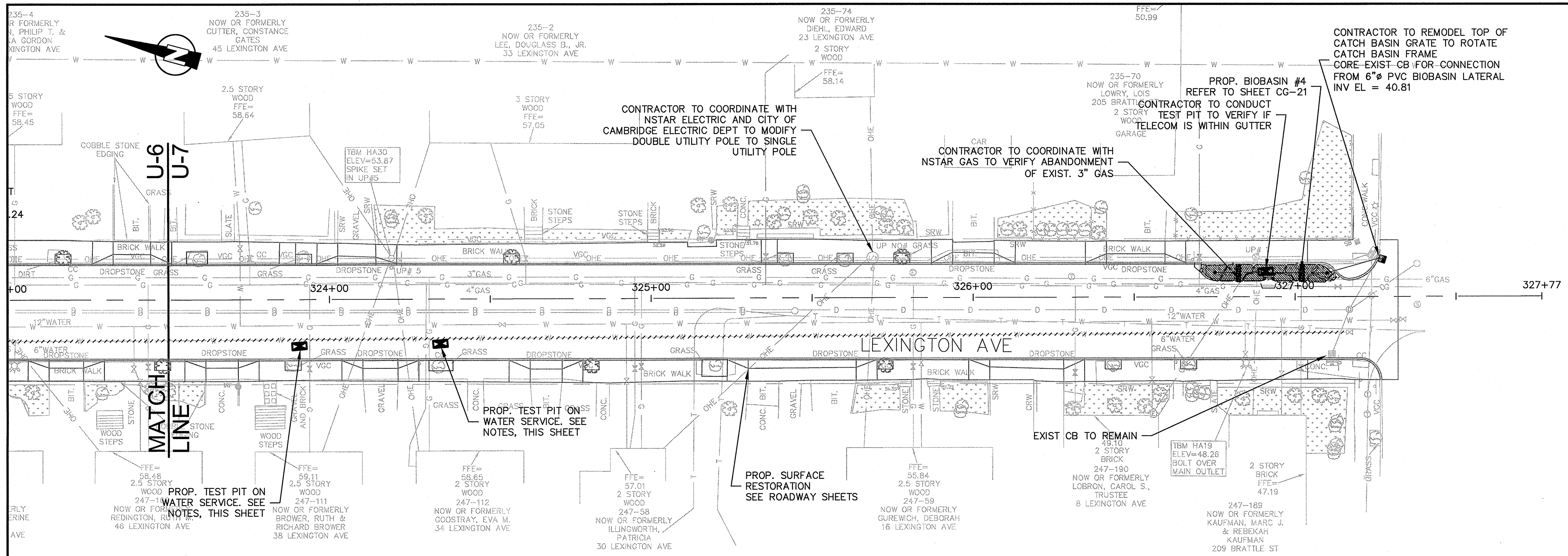
Scale	AS NOTED			
Date	SEPTEMBER 2012			
Job No.	20110101-A			
Designed by	KJL			
Drawn by	KJL			
Checked by	CMC	No.	Description	Date
Approved by	BJM		REVISIONS	



Client	CITY OF CAMBRIDGE, MASSACHUSETTS	Sheet	U-6
Project	HURON A SEWER SEPARATION PROJECT Contract No. 8A	File No.	
Drawing	CIVIL UTILITY COORDINATION LEXINGTON AVENUE - STA 312+50 TO 323+50		

CONFORMED SET





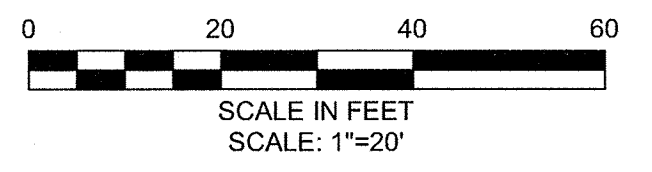
**NOTES:**

1. THE CAMBRIDGE WATER DEPARTMENT (CWD) WILL NOT ISSUE NEW WATER CONSTRUCTION PERMITS UNTIL ALL REQUIREMENTS FOR PREVIOUS (I.E., INITIAL CWD PERMIT) CWD PERMITS ARE MET. THESE REQUIREMENTS INCLUDE ACCURATE AND LEGIBLE SWING TIE DIMENSIONS TO ALL NEW WATER MAIN GATE VALVES, TEE'S AND ELBOW'S, REQUIRED CWD "SIGN OFF'S" ON THE CONTRACTOR'S COPY OF THE CWD EXECUTED PERMIT (WHEN PERMITTED WORK IS COMPLETED), TEST DOCUMENTATION THAT INCLUDES MASSACHUSETTS STATE CERTIFIED INITIAL CHLORINATION AND BACTERIA TESTING OF NEW WATER MAIN WORK, AND PRESSURE TEST RESULTS OF NEW WATER MAIN WORK. THE CONTRACTOR IS HEREBY ADVISED THAT THE CWD WILL NOT BE RESPONSIBLE FOR THE CONTRACTOR'S SLIP IN PROJECT SCHEDULE IF THESE REQUIREMENTS FOR PERMITS ARE NOT FOLLOWED.
2. UNLESS OTHERWISE NOTED, PROPOSED WATER MAINS OR RELOCATED WATER MAINS SHALL BE INSTALLED WITH MINIMUM COVER OF 5'.
3. CONTRACTOR TO PROVIDE 1" CHLORINATION TAP AT ALL LOCATIONS WHERE PROPOSED OR RELOCATED WATER MAIN CONNECTS TO EXISTING WATER MAIN.
4. ALL NEW AND RELOCATED HYDRANTS TO BE FLOW TESTED WITH THE CWD AND PAINTED PER THE CWD SPECIFICATIONS. CONTRACTOR TO COORDINATE WITH CWD FOR PAINT SPECIFICATIONS/COLOR.
5. CONTRACTOR SHALL CONNECT WATER SERVICES TO NEW WATER MAIN. EXISTING LEAD SERVICES SHALL BE REMOVED AND REPLACED TO THE BACK OF SIDEWALK. SERVICES UNDER 1" IN DIAMETER SHALL BE REPLACED TO THE BACK OF SIDEWALK, AS SHOWN IN TABLE 1 BELOW. THE CITY OF CAMBRIDGE WATER DEPARTMENT HAS INDICATED THAT THERE ARE APPROXIMATELY 7 SERVICES OF LEAD, UNKNOWN MATERIAL, AND/OR 3/4" SIZE WATER SERVICES ON LEXINGTON AVENUE. ADDITIONAL LOCATIONS TO BE VERIFIED BY CONTRACTOR IN THE FIELD.
6. CONTRACTOR TO ABANDON EXIST 6" WATER MAIN. TRANSFER ACTIVE SERVICES TO EXIST 12" WATER MAIN. CONTRACTOR TO CONDUCT TEST PITS AT LOCATIONS ON SHEETS U-6 AND U-7 TO VERIFY LOCATION AND CONNECTIVITY OF WATER SERVICES. PRIOR TO ABANDONMENT, CONTRACTOR TO VERIFY ALL HOUSES TO LEXINGTON AVENUE BETWEEN HURON AVENUE AND BRATTLE STREET ARE CONNECTED TO THE 12-INCH WATER MAIN.
7. PROPOSED MANHOLES AND CATCH BASINS SOUTH OF THE HYDRAULIC AREA ARE SHOWN ON THE UTILITY COORDINATION SHEETS. ALL OTHER PROPOSED MANHOLES AND CATCH BASINS ARE DETAILED ON THE CIVIL SHEETS. ALL CATCH BASIN CONNECTIONS TO PROPOSED BIOBASINS ARE SHOWN ON THE UTILITY COORDINATION SHEETS.

**EXISTING WATER SERVICE INFORMATION**

Table 1 - Lexington Avenue

Street #	Size	Material
134	3/4"	Copper
140	3/4"	Copper
146-148	3/4"	Copper
155-157	1"	Lead
168	1.25"	Lead
174	1"	Unknown
178-180	1"	Lead



CONFIRMED SET

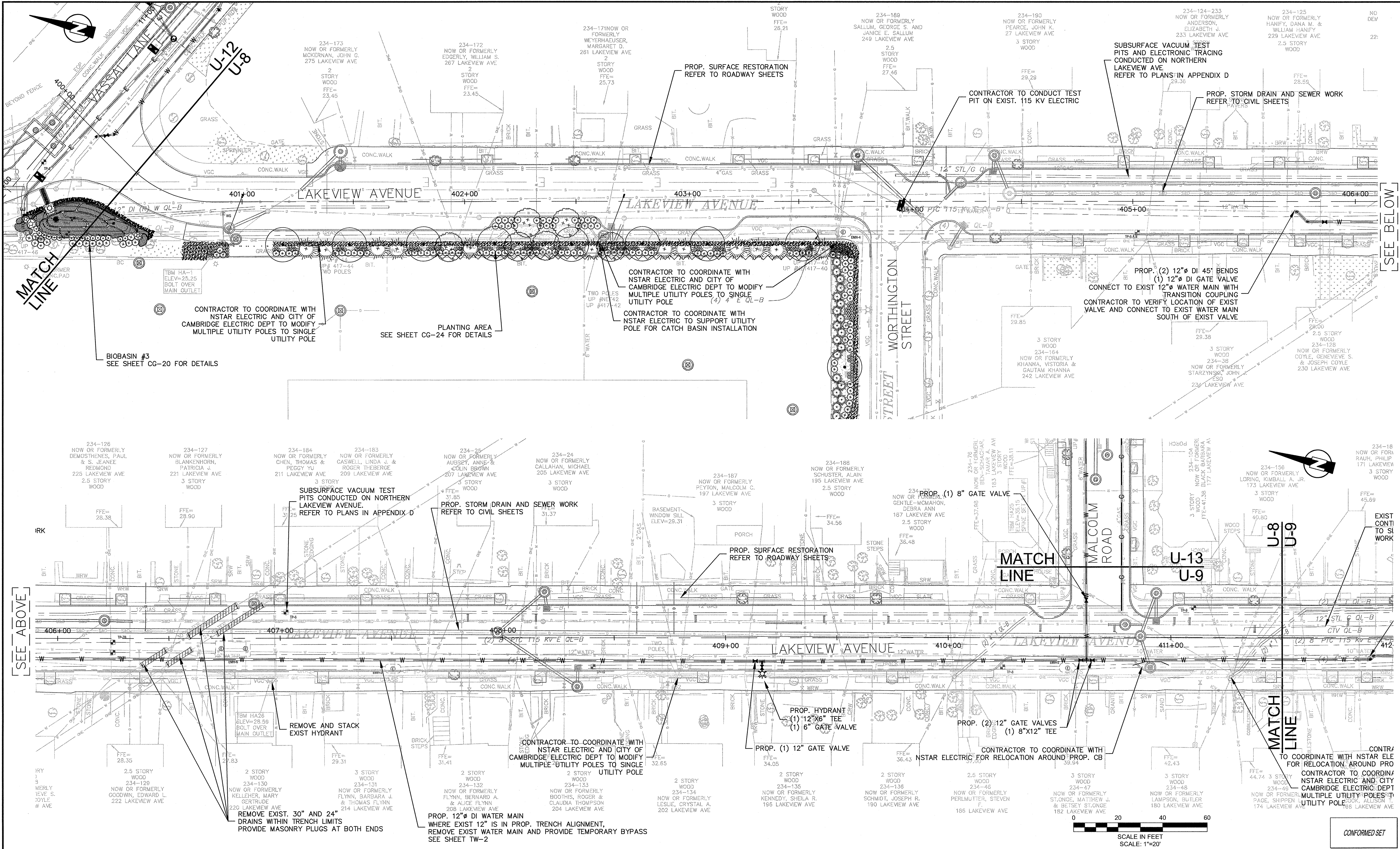
PLOT DATE=9/4/2012 1:46:03 PM USER=KYLE LANGLOIS FILENAME=G:\clients\cambridge\MA20110101-A - Huron A2.8 Drawing\Lexington\_UTILITY\_coordination - (Confirmed).dwg

Scale	AS NOTED		
Date	SEPTEMBER 2012		
Job No.	20110101-A		
Designed by	KJL		
Drawn by	KJL		
Checked by	CMC	No.	Description
Approved by	BJM		Date



Client	CITY OF CAMBRIDGE, MASSACHUSETTS	Sheet	U-7
Project	HURON A SEWER SEPARATION PROJECT Contract No. 8A	File No.	
Drawing	CIVIL UTILITY COORDINATION LEXINGTON AVENUE - STA 323+50 TO 327+50		

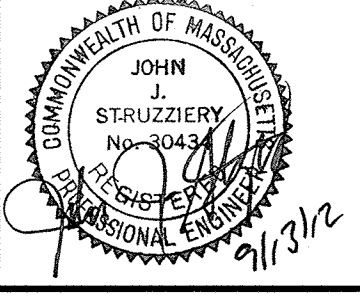




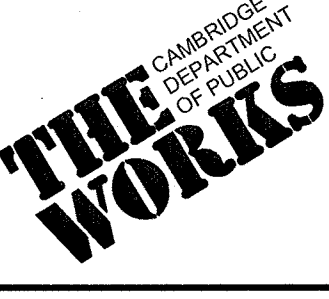
PLOT DATE: 09/27/2012 11:23:18 AM USER: RYLE LANGLOIS FILENAME: G:\clients\cambridge MA\201010.01-A - Huron A2 & Drawings - Conformed - Lakeview\_utility\_coordination - (Conformed).dwg

**KLEINFELDER** SEA  
Bright People. Right Solutions.  
MANCHESTER, NEW HAMPSHIRE ROCKY HILL, CONNECTICUT  
CAMBRIDGE, MASSACHUSETTS

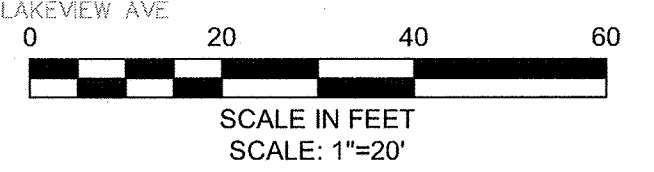
**MWH**  
285 SUMMER STREET, SUITE 200  
BOSTON, MASSACHUSETTS 02210  
TEL: (617) 314-7100



Scale	AS NOTED		
Date	SEPTEMBER 2012		
Job No.	2011010.01-A		
Designed by	KJL		
Drawn by	KJL		
Checked by	CMC	No.	Description
Approved by	BJM		REVISIONS



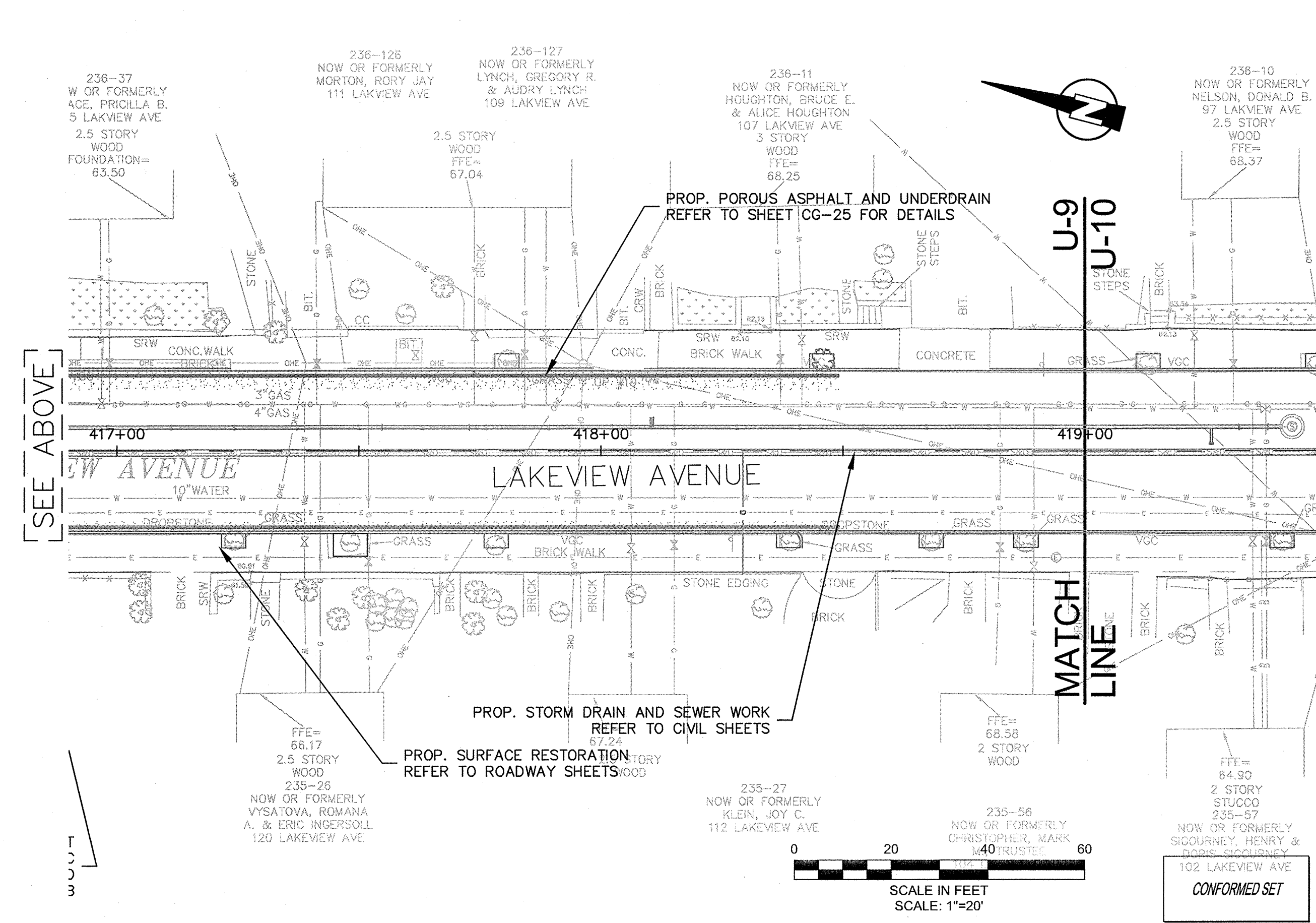
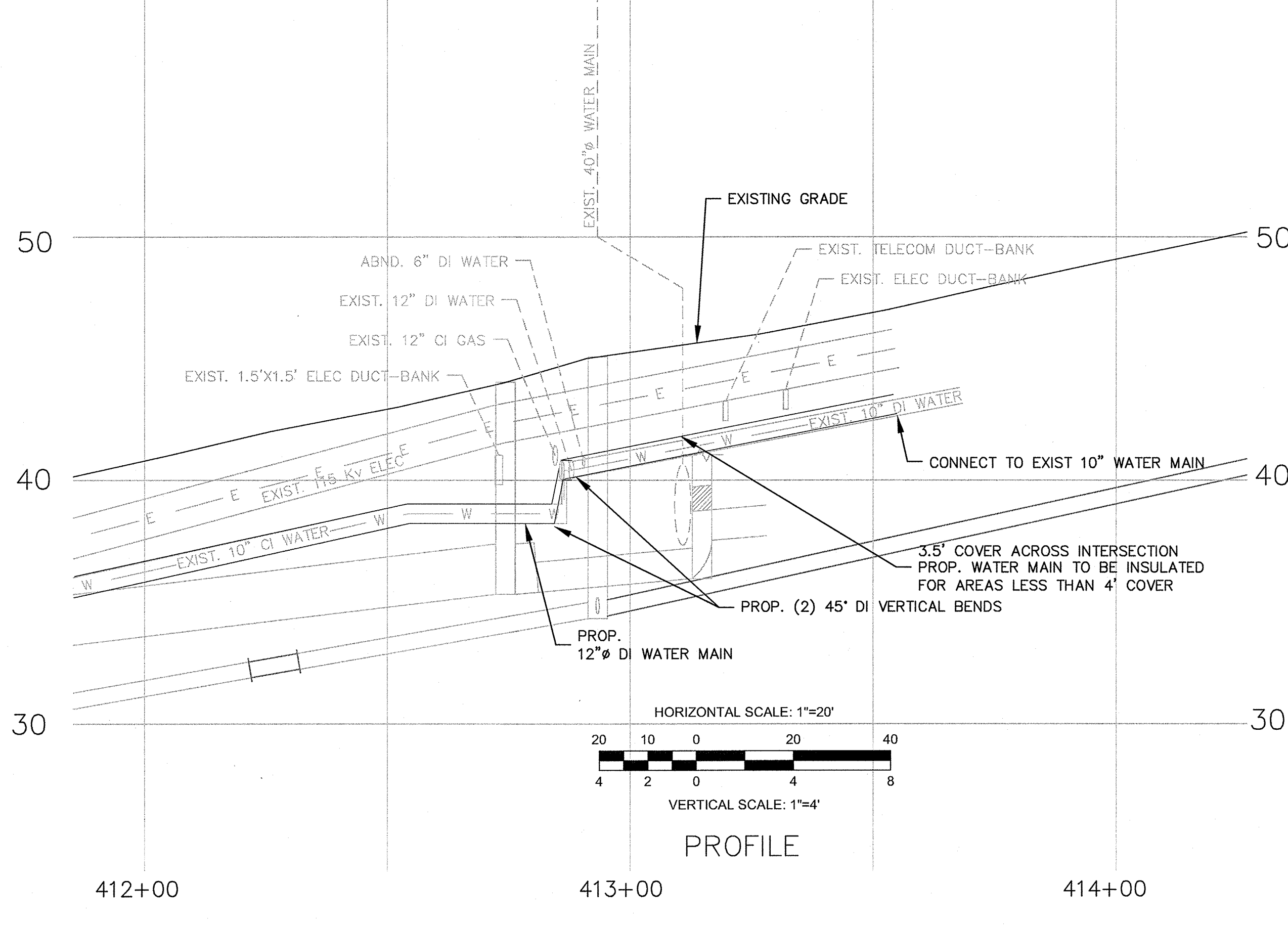
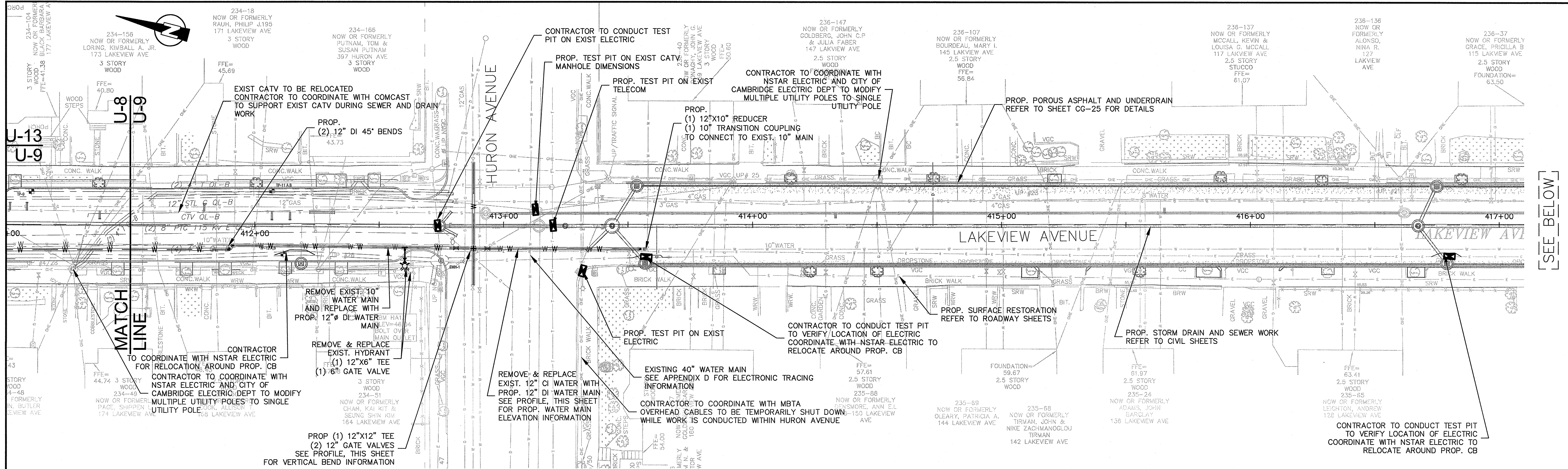
Client	CITY OF CAMBRIDGE, MASSACHUSETTS	Sheet	U-8
Project	HURON A SEWER SEPARATION PROJECT Contract No. 8A	File No.	
Drawing	CIVIL UTILITY COORDINATION LAKEVIEW AVENUE - STA 400+00 TO 411+00		



CONFORMED SET

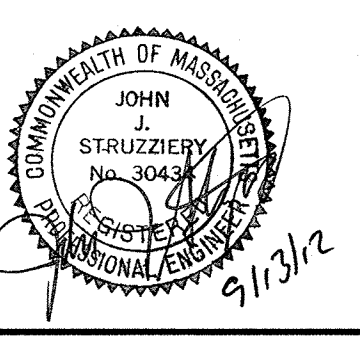


PLOT DATE=9/4/2012 11:52:55 AM USER=KYLE LANGLOIS FILENAME=C:\clients\Cambridge MA\20110101-01-A - Huron A2.d Drawings - Confirmed - Lakeview Utility Coordination - (Confirmed).dwg

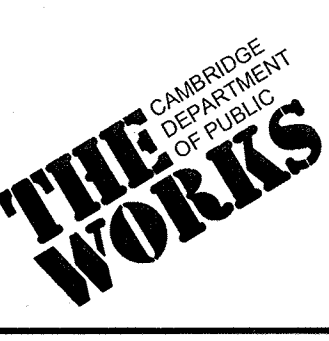


**KLEINFELDER** ■ **SEA**  
Bright People. Right Solutions.  
MANCHESTER, NEW HAMPSHIRE    ROCKY HILL, CONNECTICUT  
CAMBRIDGE, MASSACHUSETTS

**MWH**  
285 SUMMER STREET, SUITE 200  
BOSTON, MASSACHUSETTS 02210  
TEL: (617) 314-7100



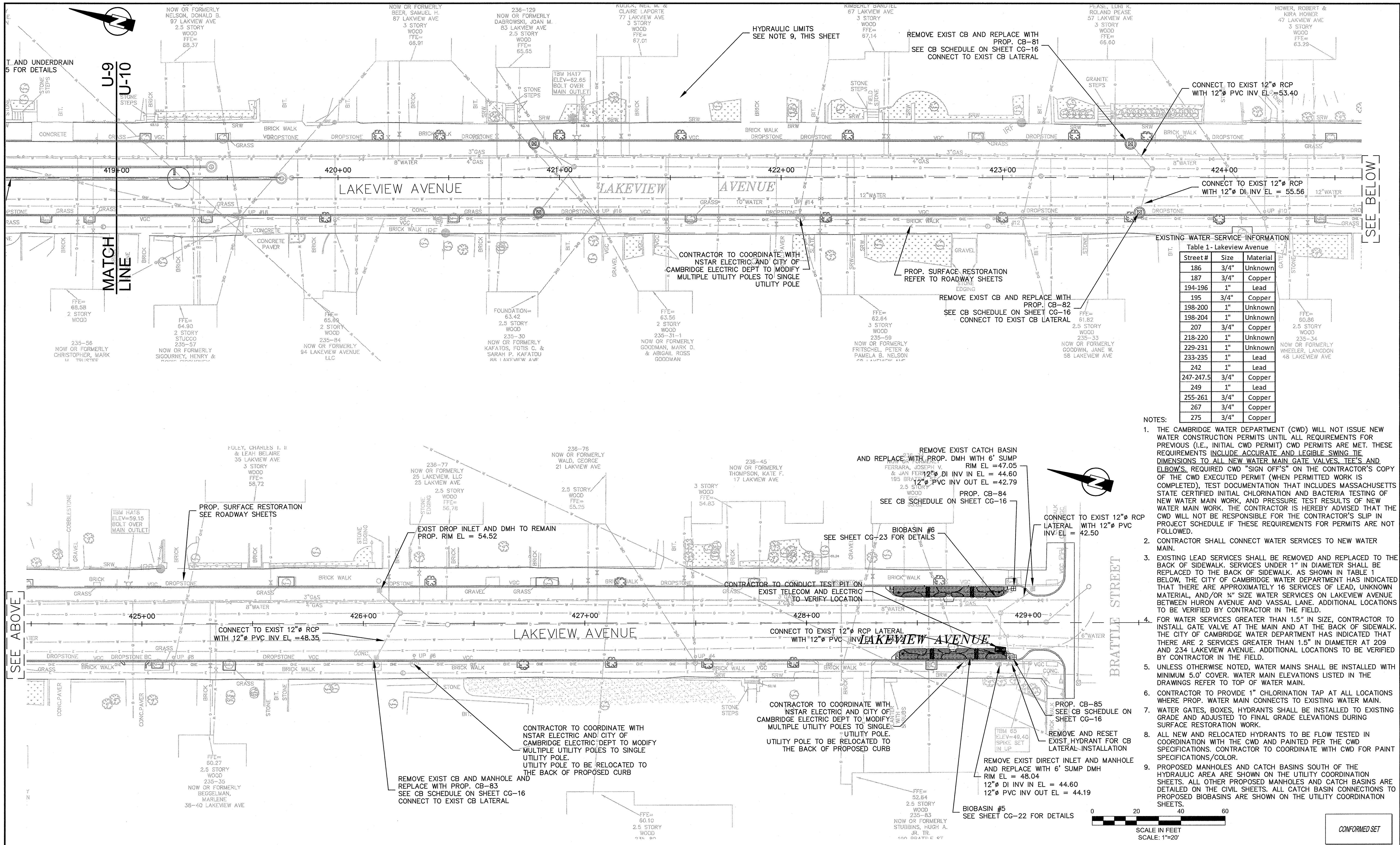
Scale	AS NOTED		
Date	SEPTEMBER 2012		
Job No.	20110101-01-A		
Designed by	KJL		
Drawn by	KJL		
Checked by	CMC	No.	Description
Approved by	BJM		Date



Client	CITY OF CAMBRIDGE, MASSACHUSETTS
Project	HURON A SEWER SEPARATION PROJECT Contract No. 8A
Drawing	CIVIL UTILITY COORDINATION LAKEVIEW AVENUE - STA 411+50 TO 422+50

Sheet	U-9
File No.	

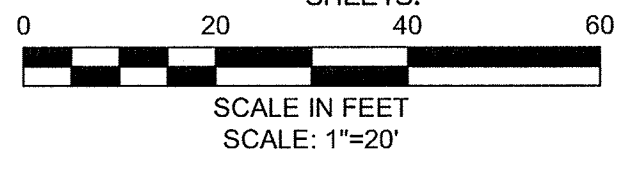




EXISTING WATER SERVICE INFORMATION  
Table 1 - Lakeview Avenue

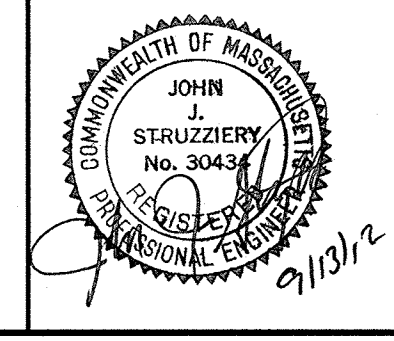
Street #	Size	Material
186	3/4"	Unknown
187	3/4"	Copper
194-196	1"	Lead
195	3/4"	Copper
198-200	1"	Unknown
198-204	1"	Unknown
207	3/4"	Copper
218-220	1"	Unknown
229-231	1"	Unknown
233-235	1"	Lead
242	1"	Lead
247-247.5	3/4"	Copper
249	1"	Lead
255-261	3/4"	Copper
267	3/4"	Copper
275	3/4"	Copper

- NOTES:
- THE CAMBRIDGE WATER DEPARTMENT (CWD) WILL NOT ISSUE NEW WATER CONSTRUCTION PERMITS UNTIL ALL REQUIREMENTS FOR PREVIOUS (I.E., INITIAL CWD PERMIT) CWD PERMITS ARE MET. THESE REQUIREMENTS INCLUDE ACCURATE AND LEGIBLE SWING TIE DIMENSIONS TO ALL NEW WATER MAIN GATE VALVES, TEE'S AND ELBOW'S, REQUIRED CWD "SIGN OFF'S" ON THE CONTRACTOR'S COPY OF THE CWD EXECUTED PERMIT (WHEN PERMITTED WORK IS COMPLETED), TEST DOCUMENTATION THAT INCLUDES MASSACHUSETTS STATE CERTIFIED INITIAL CHLORINATION AND BACTERIA TESTING OF NEW WATER MAIN WORK, AND PRESSURE TEST RESULTS OF NEW WATER MAIN WORK. THE CONTRACTOR IS HEREBY ADVISED THAT THE CWD WILL NOT BE RESPONSIBLE FOR THE CONTRACTOR'S SLIP IN PROJECT SCHEDULE IF THESE REQUIREMENTS FOR PERMITS ARE NOT FOLLOWED.
  - CONTRACTOR SHALL CONNECT WATER SERVICES TO NEW WATER MAIN.
  - EXISTING LEAD SERVICES SHALL BE REMOVED AND REPLACED TO THE BACK OF SIDEWALK. SERVICES UNDER 1" IN DIAMETER SHALL BE REPLACED TO THE BACK OF SIDEWALK. AS SHOWN IN TABLE 1 BELOW, THE CITY OF CAMBRIDGE WATER DEPARTMENT HAS INDICATED THAT THERE ARE APPROXIMATELY 16 SERVICES OF LEAD, UNKNOWN MATERIAL, AND/OR 3/4" SIZE WATER SERVICES ON LAKEVIEW AVENUE BETWEEN HURON AVENUE AND VASSAL LANE. ADDITIONAL LOCATIONS TO BE VERIFIED BY CONTRACTOR IN THE FIELD.
  - FOR WATER SERVICES GREATER THAN 1.5" IN SIZE, CONTRACTOR TO INSTALL GATE VALVE AT THE MAIN AND AT THE BACK OF SIDEWALK. THE CITY OF CAMBRIDGE WATER DEPARTMENT HAS INDICATED THAT THERE ARE 2 SERVICES GREATER THAN 1.5" IN DIAMETER AT 209 AND 234 LAKEVIEW AVENUE. ADDITIONAL LOCATIONS TO BE VERIFIED BY CONTRACTOR IN THE FIELD.
  - UNLESS OTHERWISE NOTED, WATER MAINS SHALL BE INSTALLED WITH MINIMUM 5.0' COVER. WATER MAIN ELEVATIONS LISTED IN THE DRAWINGS REFER TO TOP OF WATER MAIN.
  - CONTRACTOR TO PROVIDE 1" CHLORINATION TAP AT ALL LOCATIONS WHERE PROP. WATER MAIN CONNECTS TO EXISTING WATER MAIN.
  - WATER GATES, BOXES, HYDRANTS SHALL BE INSTALLED TO EXISTING GRADE AND ADJUSTED TO FINAL GRADE ELEVATIONS DURING SURFACE RESTORATION WORK.
  - ALL NEW AND RELOCATED HYDRANTS TO BE FLOW TESTED IN COORDINATION WITH THE CWD AND PAINTED PER THE CWD SPECIFICATIONS. CONTRACTOR TO COORDINATE WITH CWD FOR PAINT SPECIFICATIONS/COLOR.
  - PROPOSED MANHOLES AND CATCH BASINS SOUTH OF THE HYDRAULIC AREA ARE SHOWN ON THE UTILITY COORDINATION SHEETS. ALL OTHER PROPOSED MANHOLES AND CATCH BASINS ARE DETAILED ON THE CIVIL SHEETS. ALL CATCH BASIN CONNECTIONS TO PROPOSED BIOBASINS ARE SHOWN ON THE UTILITY COORDINATION SHEETS.

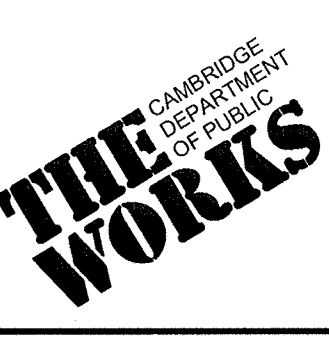


CONFORMED SET

PLOT DATE=04/2012 11:55:04 AM USER=KYLE LANGLOIS FILENAME=C:\clients\cambridge\MA20110101-A-Huron A2 & Drawings\Conformed\_Lakeview\_Utility\_coordination - (Conformed).dwg



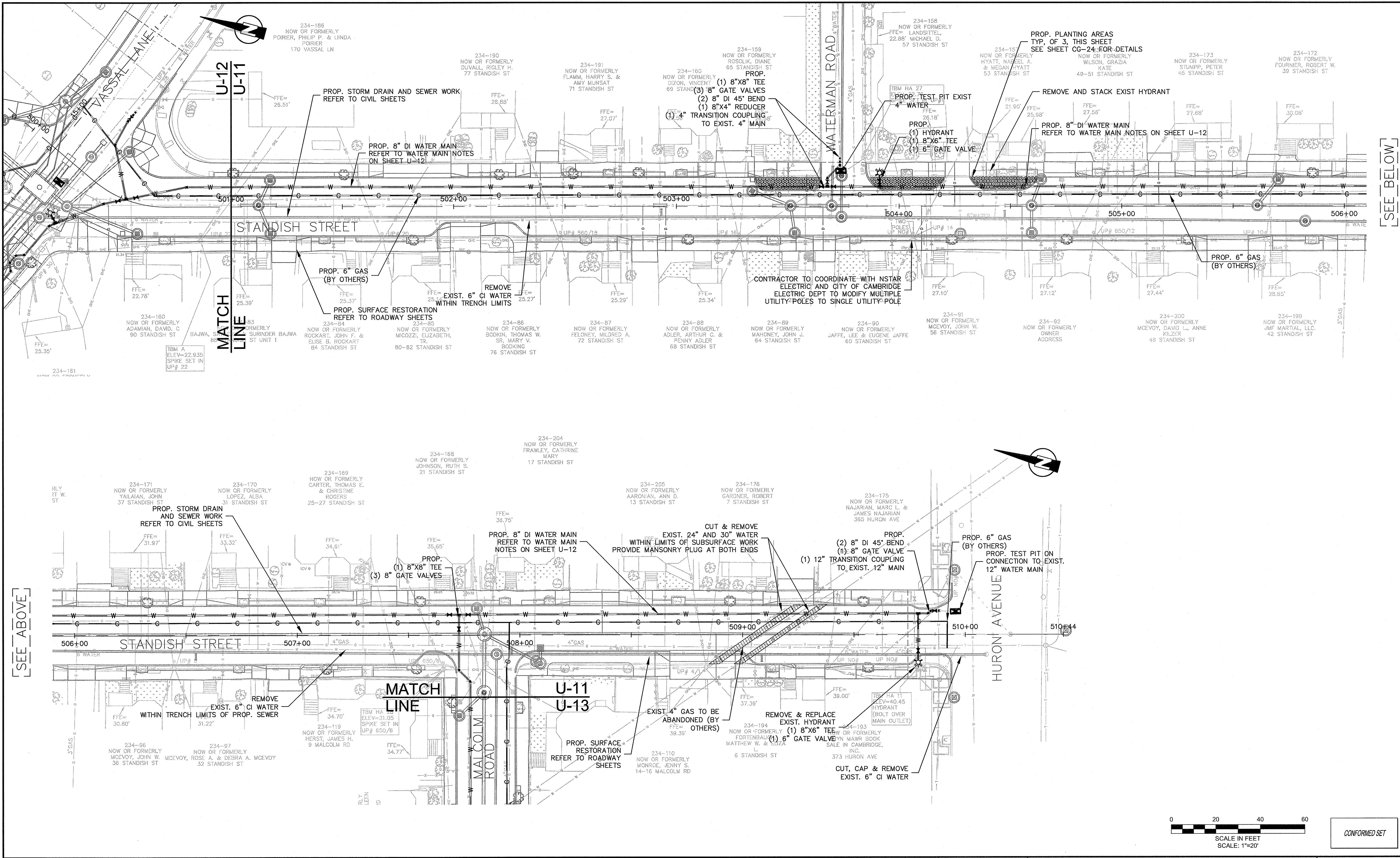
Scale	AS NOTED			
Date	SEPTEMBER 2012			
Job No.	20110101-A			
Designed by	KJL			
Drawn by	KJL			
Checked by	CMC	No.	Description	Date
Approved by	BJM		REVISIONS	



Client	CITY OF CAMBRIDGE, MASSACHUSETTS	Sheet	U-10
Project	HURON A SEWER SEPARATION PROJECT Contract No. 8A	File No.	
Drawing	CIVIL UTILITY COORDINATION LAKEVIEW AVENUE - STA 422+50 TO 429+50		

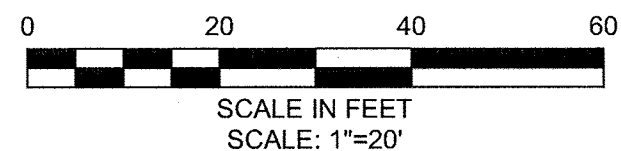


PLOT DATE=04/20/12 2:54:16 PM USER=KYLE LANGLOIS FILENAME=G:\clients\Cambridge\MA20110101-A - Huron A2.8 Drawings\Conformed\Standish\_utility\_coordination - (Conformed).dwg



SEE ABOVE

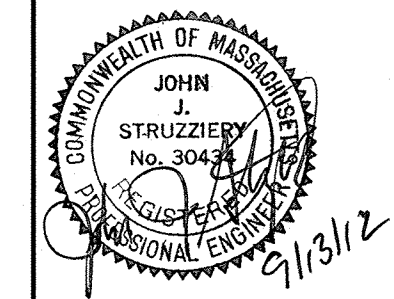
SEE BELOW



CONFORMED SET

**KLEINFELDER S E A**  
 Bright People. Right Solutions.  
 MANCHESTER, NEW HAMPSHIRE ROCKY HILL, CONNECTICUT  
 CAMBRIDGE, MASSACHUSETTS

**MWH**  
 285 SUMMER STREET, SUITE 200  
 BOSTON, MASSACHUSETTS 02210  
 TEL: (617) 314-7100

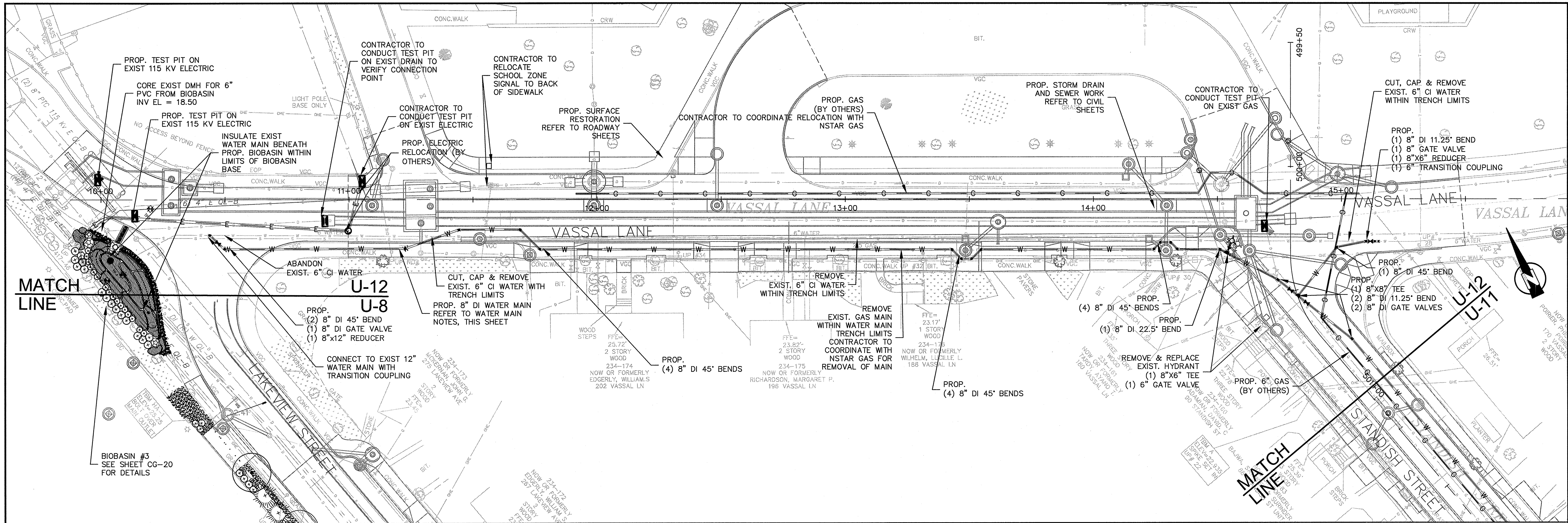


Scale	AS NOTED		
Date	SEPTEMBER 2012		
Job No.	20110101-A		
Designed by	KJL		
Drawn by	KJL		
Checked by	CMC	No.	Description
Approved by	BJM		REVISIONS



Client	CITY OF CAMBRIDGE, MASSACHUSETTS	Sheet	U-11
Project	HURON A SEWER SEPARATION PROJECT Contract No. 8A	File No.	
Drawing	CIVIL UTILITY COORDINATION STANDISH STREET - STA 500+00 TO 510+44		





**GENERAL NOTE:**

- THE CAMBRIDGE WATER DEPARTMENT (CWD) WILL NOT ISSUE NEW WATER CONSTRUCTION PERMITS UNTIL ALL REQUIREMENTS FOR PREVIOUS (I.E., INITIAL CWD PERMIT) CWD PERMITS ARE MET. THESE REQUIREMENTS INCLUDE ACCURATE AND LEGIBLE SWING TIE DIMENSIONS TO ALL NEW WATER MAIN GATE VALVES, TEE'S AND ELBOWS. REQUIRED CWD "SIGN OFF'S" ON THE CONTRACTOR'S COPY OF THE CWD EXECUTED PERMIT (WHEN PERMITTED WORK IS COMPLETED), TEST DOCUMENTATION THAT INCLUDES MASSACHUSETTS STATE CERTIFIED INITIAL CHLORINATION AND BACTERIA TESTING OF NEW WATER MAIN WORK, AND PRESSURE TEST RESULTS OF NEW WATER MAIN WORK. THE CONTRACTOR IS HEREBY ADVISED THAT THE CWD WILL NOT BE RESPONSIBLE FOR THE CONTRACTOR'S SLIP IN PROJECT SCHEDULE IF THESE REQUIREMENTS FOR PERMITS ARE NOT FOLLOWED.

**STANDISH STREET NOTES:**

- CONTRACTOR SHALL CONNECT WATER SERVICES TO NEW WATER MAIN. EXISTING LEAD SERVICES SHALL BE REMOVED AND REPLACED TO THE BACK OF SIDEWALK. SERVICES UNDER 1" IN DIAMETER SHALL BE REPLACED TO THE BACK OF SIDEWALK, AS SHOWN IN TABLE 1. THE CITY OF CAMBRIDGE WATER DEPARTMENT HAS INDICATED THAT THERE ARE APPROXIMATELY 13 SERVICES OF LEAD, UNKNOWN MATERIAL, AND/OR 3/4" SIZE WATER SERVICES ON STANDISH STREET. ADDITIONAL LOCATIONS TO BE VERIFIED BY CONTRACTOR IN THE FIELD.
- FOR WATER SERVICES GREATER THAN 1.5" IN SIZE, CONTRACTOR TO INSTALL GATE VALVE AT THE MAIN AND AT THE BACK OF SIDEWALK. THE CITY OF CAMBRIDGE WATER DEPARTMENT HAS INDICATED THAT THERE ARE 0 SERVICES GREATER THAN 1.5" IN DIAMETER ON STANDISH STREET. ADDITIONAL LOCATIONS TO BE VERIFIED BY CONTRACTOR IN THE FIELD.
- UNLESS OTHERWISE NOTED, WATER MAINS SHALL BE INSTALLED WITH MINIMUM 5.0' COVER. WATER MAIN ELEVATIONS LISTED IN THE DRAWINGS REFER TO TOP OF WATER MAIN.
- CONTRACTOR TO PROVIDE 1" CHLORINATION TAP AT ALL LOCATIONS WHERE PROP. WATER MAIN CONNECTS TO EXISTING WATER MAIN.
- WATER GATES, BOXES, HYDRANTS SHALL BE INSTALLED TO EXISTING GRADE AND ADJUSTED TO FINAL GRADE ELEVATIONS DURING SURFACE RESTORATION WORK.
- ALL NEW AND RELOCATED HYDRANTS TO BE FLOW TESTED IN COORDINATION WITH THE CWD AND PAINTED PER THE CWD SPECIFICATIONS. CONTRACTOR TO COORDINATE WITH CWD FOR PAINT SPECIFICATIONS/COLOR.

**EXISTING WATER SERVICE INFORMATION**

Table 1 - Standish Street

Street #	Size	Material
6	3/4"	Copper
7	3/4"	Copper
23-25	1"	Lead
32	1"	Lead
33	1"	Lead
36	1"	Lead
42	1.25"	Lead
52	1"	Lead
53	1"	Lead
57	3/4"	Copper
76-78	1"	Lead
84	3/4"	Copper
90	1"	Lead

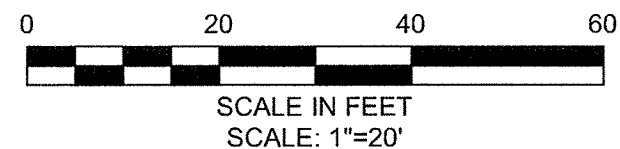
**VASSAL LANE NOTES:**

- CONTRACTOR SHALL CONNECT WATER SERVICES TO NEW WATER MAIN. EXISTING LEAD SERVICES SHALL BE REMOVED AND REPLACED TO THE BACK OF SIDEWALK. SERVICES UNDER 1" IN DIAMETER SHALL BE REPLACED TO THE BACK OF SIDEWALK. THE CITY OF CAMBRIDGE WATER DEPARTMENT HAS INDICATED THAT THERE ARE APPROXIMATELY 3 SERVICES OF LEAD, UNKNOWN MATERIAL, AND/OR 3/4" SIZE WATER SERVICES ON VASSAL LANE. ADDITIONAL LOCATIONS TO BE VERIFIED BY CONTRACTOR IN THE FIELD.
- FOR WATER SERVICES GREATER THAN 1.5" IN SIZE, CONTRACTOR TO INSTALL GATE VALVE AT THE MAIN AND AT THE BACK OF SIDEWALK. THE CITY OF CAMBRIDGE WATER DEPARTMENT HAS INDICATED THAT THERE ARE 1 SERVICES GREATER THAN 1.5" IN DIAMETER AT 180 VASSAL LANE. ADDITIONAL LOCATIONS TO BE VERIFIED BY CONTRACTOR IN THE FIELD.
- UNLESS OTHERWISE NOTED, WATER MAINS SHALL BE INSTALLED WITH MINIMUM 5.0' COVER. WATER MAIN ELEVATIONS LISTED IN THE DRAWINGS REFER TO TOP OF WATER MAIN.
- CONTRACTOR TO PROVIDE 1" CHLORINATION TAP AT ALL LOCATIONS WHERE PROP. WATER MAIN CONNECTS TO EXISTING WATER MAIN.
- WATER GATES, BOXES, HYDRANTS SHALL BE INSTALLED TO EXISTING GRADE AND ADJUSTED TO FINAL GRADE ELEVATIONS DURING SURFACE RESTORATION WORK.
- ALL NEW AND RELOCATED HYDRANTS TO BE FLOW TESTED IN COORDINATION WITH THE CWD AND PAINTED PER THE CWD SPECIFICATIONS. CONTRACTOR TO COORDINATE WITH CWD FOR PAINT SPECIFICATIONS/COLOR.

**EXISTING WATER SERVICE INFORMATION**

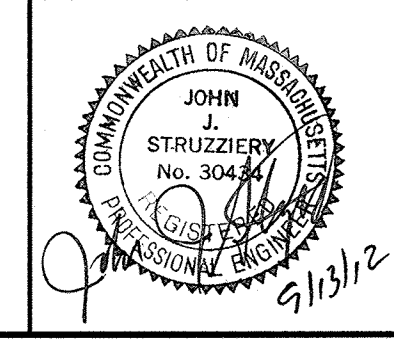
Table 1 - Vassal Lane

Street #	Size	Material
168-170	1"	Lead
188-196	3/4"	Unknown
202	3/4"	Unknown

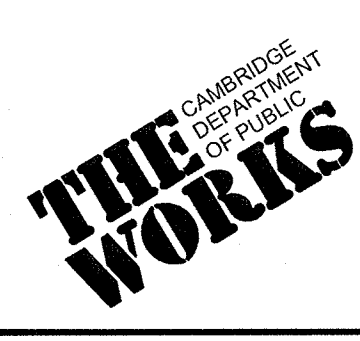


CONFIRMED SET

PLOT DATE=04/2012 2:55:38 PM USER=KYLE LANGLOIS FILENAME=C:\clients\cambridge\MA20110101-A-Huron A2.8 Drawings\Standish\_utility\_coordination - (Confirmed).dwg

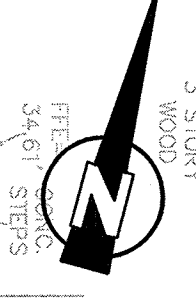
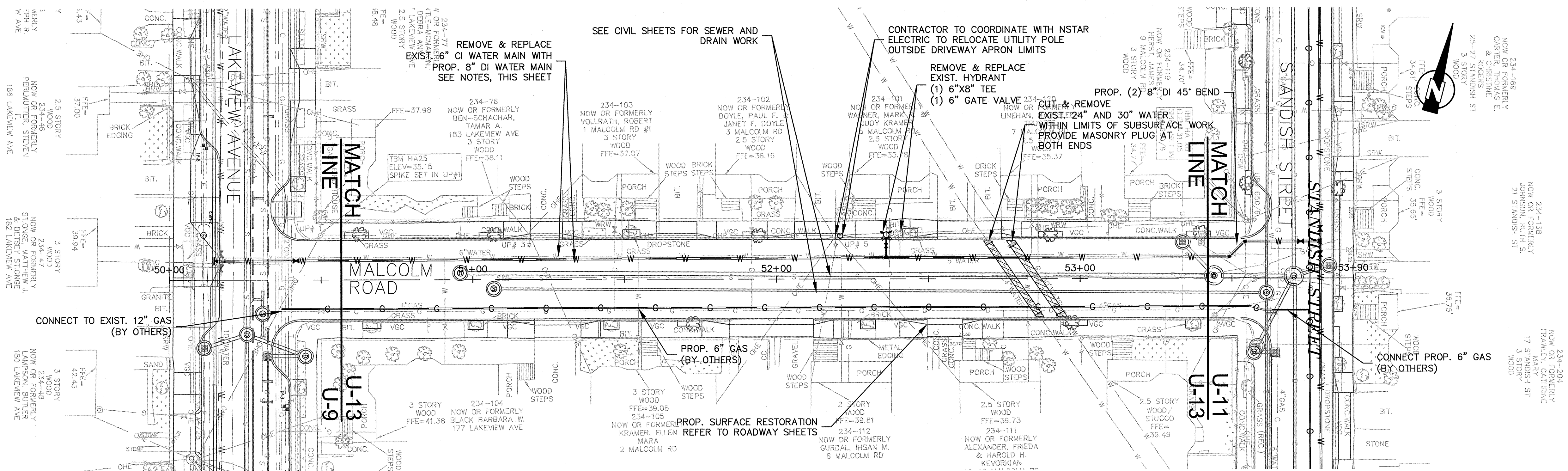


Scale	AS NOTED		
Date	SEPTEMBER 2012		
Job No.	20110101-A		
Designed by	KJL		
Drawn by	KJL		
Checked by	CMC	No.	Description
Approved by	BJM		REVISIONS



Client	CITY OF CAMBRIDGE, MASSACHUSETTS	Sheet	U-12
Project	HURON A SEWER SEPARATION PROJECT	File No.	
	Contract No. 8A		
Drawing	CIVIL UTILITY COORDINATION VASSAL LANE - STA 10+00 TO 15+50		





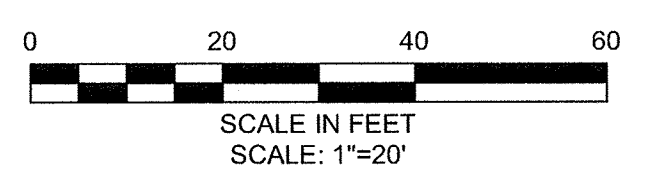
**NOTES:**

1. THE CAMBRIDGE WATER DEPARTMENT (CWD) WILL NOT ISSUE NEW WATER CONSTRUCTION PERMITS UNTIL ALL REQUIREMENTS FOR PREVIOUS (I.E., INITIAL CWD PERMIT) CWD PERMITS ARE MET. THESE REQUIREMENTS INCLUDE ACCURATE AND LEGIBLE SWING TIE DIMENSIONS TO ALL NEW WATER MAIN GATE VALVES, TEE'S AND ELBOW'S, REQUIRED CWD "SIGN OFF'S" ON THE CONTRACTOR'S COPY OF THE CWD EXECUTED PERMIT (WHEN PERMITTED WORK IS COMPLETED), TEST DOCUMENTATION THAT INCLUDES MASSACHUSETTS STATE CERTIFIED INITIAL CHLORINATION AND BACTERIA TESTING OF NEW WATER MAIN WORK, AND PRESSURE TEST RESULTS OF NEW WATER MAIN WORK. THE CONTRACTOR IS HEREBY ADVISED THAT THE CWD WILL NOT BE RESPONSIBLE FOR THE CONTRACTOR'S SLIP IN PROJECT SCHEDULE IF THESE REQUIREMENTS FOR PERMITS ARE NOT FOLLOWED.
2. CONTRACTOR SHALL CONNECT WATER SERVICES TO NEW WATER MAIN. EXISTING LEAD SERVICES SHALL BE REMOVED AND REPLACED TO THE BACK OF SIDEWALK. SERVICES UNDER 1" IN DIAMETER SHALL BE REPLACED TO THE BACK OF SIDEWALK, AS SHOWN IN TABLE 1 BELOW. THE CITY OF CAMBRIDGE WATER DEPARTMENT HAS INDICATED THAT THERE ARE APPROXIMATELY 4 SERVICES OF LEAD, UNKNOWN MATERIAL, AND/OR 3/4" SIZE WATER SERVICES ON MALCOLM ROAD. ADDITIONAL LOCATIONS TO BE VERIFIED BY CONTRACTOR IN THE FIELD.
3. UNLESS OTHERWISE NOTED, WATER MAINS SHALL BE INSTALLED WITH MINIMUM 5.0' COVER. WATER MAIN ELEVATIONS LISTED IN THE DRAWINGS REFER TO TOP OF WATER MAIN.
4. CONTRACTOR TO PROVIDE 1" CHLORINATION TAP AT ALL LOCATIONS WHERE PROP. WATER MAIN CONNECTS TO EXISTING WATER MAIN.
5. WATER GATES, BOXES, HYDRANTS SHALL BE INSTALLED TO EXISTING GRADE AND ADJUSTED TO FINAL GRADE ELEVATIONS DURING SURFACE RESTORATION WORK.
6. ALL NEW AND RELOCATED HYDRANTS TO BE FLOW TESTED IN COORDINATION WITH THE CWD AND PAINTED PER THE CWD SPECIFICATIONS. CONTRACTOR TO COORDINATE WITH CWD FOR PAINT SPECIFICATIONS/COLOR.

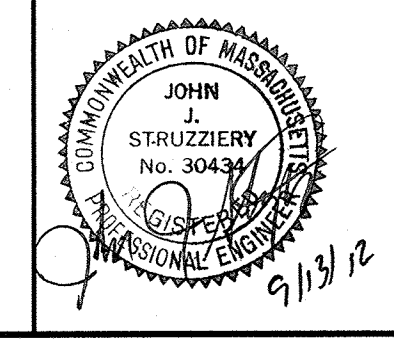
EXISTING WATER SERVICE INFORMATION

Table 1 - Malcolm Road

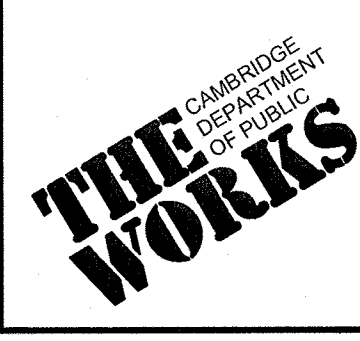
Street #	Size	Material
3	3/4"	Lead
6 to 8	3/4"	Copper
7	1"	Unknown
10 to 12	3/4"	Lead



CONFORMED SET



Scale	AS NOTED
Date	SEPTEMBER 2012
Job No.	2011010.01-A
Designed by	KJL
Drawn by	KJL
Checked by	CMC
Approved by	BJM



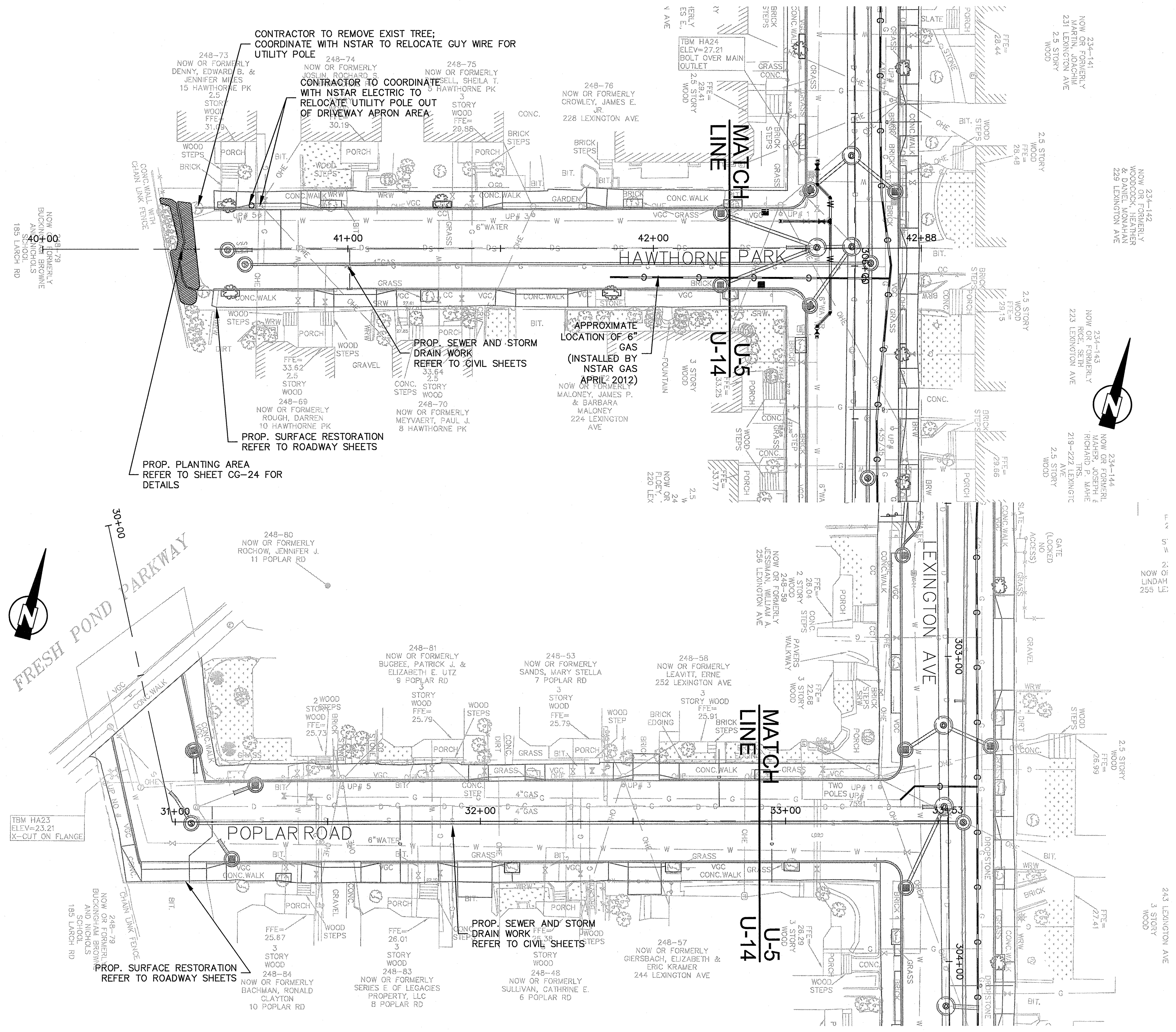
Client	CITY OF CAMBRIDGE, MASSACHUSETTS
Project	HURON A SEWER SEPARATION PROJECT Contract No. 8A
Drawing	CIVIL UTILITY COORDINATION MALCOLM ROAD - STA 50+00 TO 53+90

Sheet	U-13
File No.	

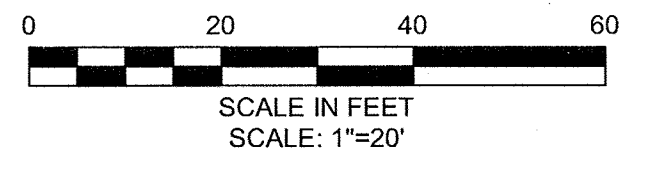
PLOT DATE=04/20/12 2:15:07 PM USER=KYLE LANGLOIS FILENAME=G:\clients\Cambridge\MA20110101\01-A - Huron A2.8 Drawings\Conformed\Utility\_coordination - (Conformed).dwg



PLOT DATE=9/4/2012 1:47:20 PM USER=KYLE LANGLOIS FILENAME=G:\clients\Cambridge\MA\20110101-01-A - Huron A2.8 Drawings\Conformed\Lexington\_UTILITY\_coordination - (Conformed).dwg



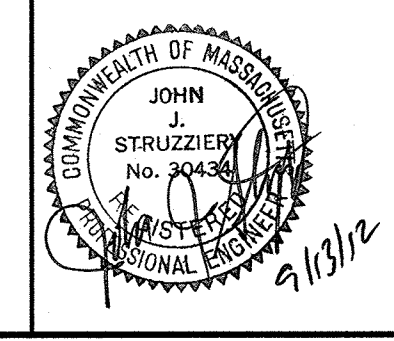
- NOTES:
1. THE CAMBRIDGE WATER DEPARTMENT (CWD) WILL NOT ISSUE NEW WATER CONSTRUCTION PERMITS UNTIL ALL REQUIREMENTS FOR PREVIOUS (I.E., INITIAL CWD PERMIT) CWD PERMITS ARE MET. THESE REQUIREMENTS INCLUDE ACCURATE AND LEGIBLE SWING TIE DIMENSIONS TO ALL NEW WATER MAIN GATE VALVES, TEE'S AND ELBOW'S. REQUIRED CWD "SIGN OFF'S" ON THE CONTRACTOR'S COPY OF THE CWD EXECUTED PERMIT (WHEN PERMITTED WORK IS COMPLETED), TEST DOCUMENTATION THAT INCLUDES MASSACHUSETTS STATE CERTIFIED INITIAL CHLORINATION AND BACTERIA TESTING OF NEW WATER MAIN WORK, AND PRESSURE TEST RESULTS OF NEW WATER MAIN. THE CONTRACTOR IS HEREBY ADVISED THAT THE CWD WILL NOT BE RESPONSIBLE FOR THE CONTRACTOR'S SLIP IN PROJECT SCHEDULE IF THESE REQUIREMENTS FOR PERMITS ARE NOT FOLLOWED.
  2. UNLESS OTHERWISE NOTED, PROPOSED WATER MAINS OR RELOCATED WATER MAINS SHALL BE INSTALLED WITH MINIMUM COVER OF 5'.
  3. CONTRACTOR TO PROVIDE 1" CHLORINATION TAP AT ALL LOCATIONS WHERE PROPOSED OR RELOCATED WATER MAIN CONNECTS TO EXISTING WATER MAIN.
  4. ALL NEW AND RELOCATED HYDRANTS TO BE FLOW TESTED WITH THE CWD AND PAINTED PER THE CWD SPECIFICATIONS. CONTRACTOR TO COORDINATE WITH CWD FOR PAINT SPECIFICATIONS/COLOR.



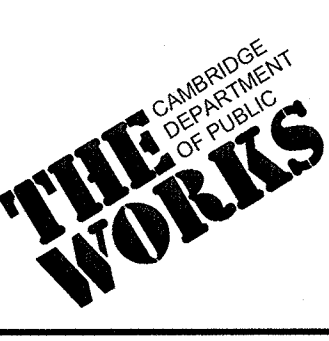
CONFORMED SET

**KLEINFELDER SEA**  
Bright People. Right Solutions.  
MANCHESTER, NEW HAMPSHIRE    ROCKY HILL, CONNECTICUT  
CAMBRIDGE, MASSACHUSETTS

**MWH**  
285 SUMMER STREET, SUITE 200  
BOSTON, MASSACHUSETTS 02210  
TEL:(617)314-7100



Scale	AS NOTED				
Date	SEPTEMBER 2012				
Job No.	20110101-A				
Designed by	KJL				
Drawn by	KJL				
Checked by	CMC	No.	Description	Date	
Approved by	BJM		REVISIONS		



Client	CITY OF CAMBRIDGE, MASSACHUSETTS	Sheet	U-14
Project	HURON A SEWER SEPARATION PROJECT Contract No. 8A	File No.	
Drawing	CIVIL UTILITY COORDINATION HAWTHORNE PARK & POPLAR ROAD		