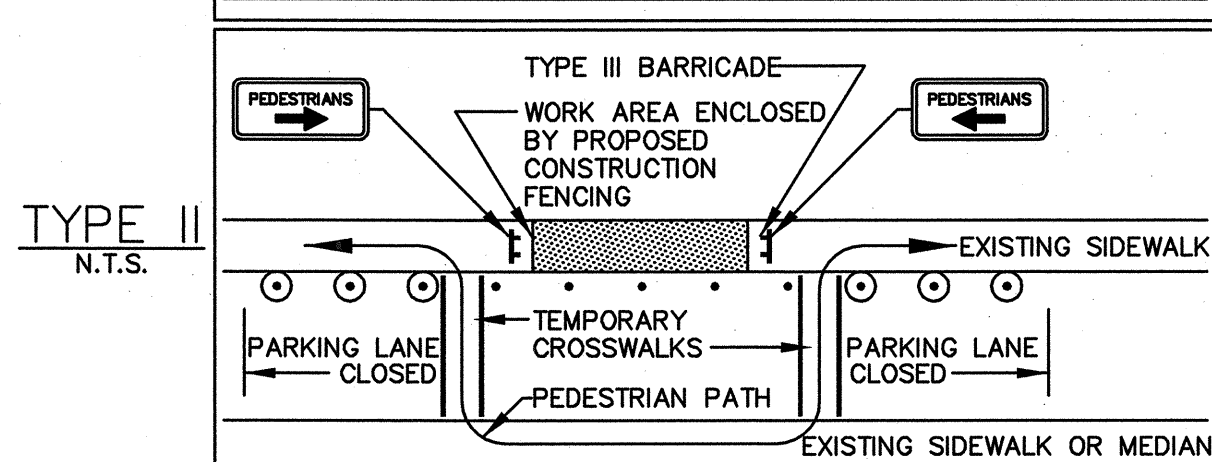
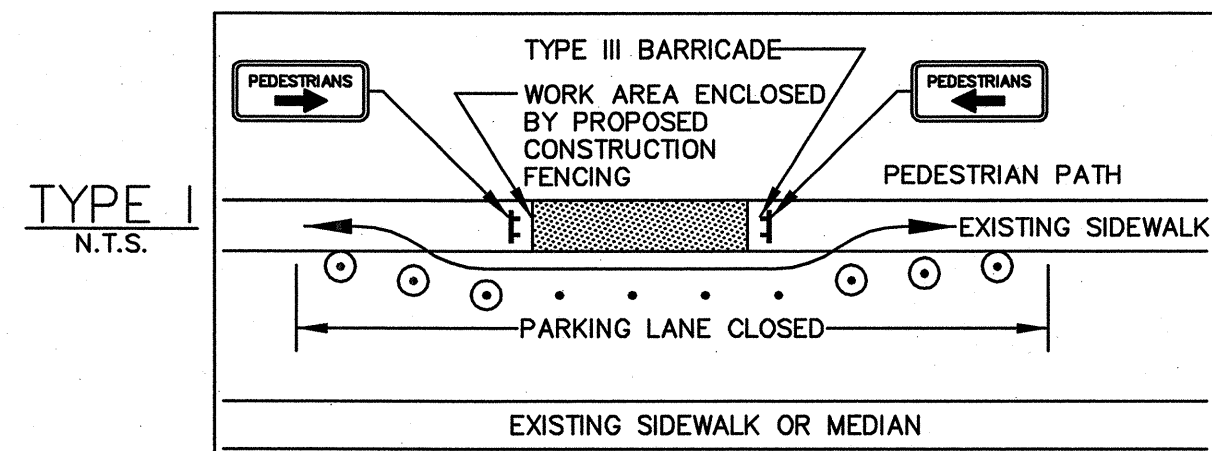


GENERAL NOTES

- GENERAL NOTES
1. THE CONTRACTOR SHALL PROTECT ALL TRAVEL WAYS FROM DUST AND CONSTRUCTION DEBRIS AT ALL TIMES.
 2. THE CONTRACTOR MUST ALLOW VEHICULAR, BICYCLE AND PEDESTRIAN ACCESS TO PRIVATE PROPERTY AT ALL TIMES DURING CONSTRUCTION.
 3. THE CONTRACTOR SHALL PROVIDE ALL NECESSARY BARRELS, BARRICADES, SIGNS, FLASHERS OR OTHER TRAFFIC CONTROL DEVICES DURING CONSTRUCTION.
 4. TRAFFIC CONTROL INCLUDES NECESSARY STREET SWEEPING AND SNOW REMOVAL WITHIN THE WORK ZONE.
 5. EXCAVATIONS SHALL BE PROTECTED DURING NON WORKING HOURS BY STEEL PLATES OR BARRICADES.
 6. THE CONTRACTOR SHALL PROVIDE SAFE PEDESTRIAN WALKWAYS AND ACCESS TO LOCAL BUSINESSES AND RESIDENCES. PUBLIC WALKWAYS SHALL REMAIN OPEN AND ACCESSIBLE UNLESS OTHERWISE DIRECTED BY AUTHORITIES HAVING JURISDICTION.
 7. TWO LANES OF TRAFFIC SHALL BE MAINTAINED AT ALL TIMES DURING CONSTRUCTION UNLESS OTHERWISE DIRECTED BY THE AUTHORITIES HAVING JURISDICTION.
 8. ALL SIGN LOCATIONS ARE SHOWN SCHEMATICALLY. FINAL LOCATIONS SHALL BE DETERMINED BASED ON ACTUAL FIELD CONDITIONS AND ENGINEER APPROVAL.
 9. ALL CONSTRUCTION SIGNING, DRUMS, BARRICADES AND OTHER DEVICES SHALL CONFORM WITH THE LATEST EDITION OF THE MANUAL ON UNIFORM TRAFFIC CONTROL DEVICES.
 10. ALL DRUMS NOT OTHERWISE SPECIFIED SHALL BE EQUIPPED WITH TYPE "C" - STEADY BURN WARNING LIGHTS. ALL DRUMS SHALL BE SET @ 20' O.C. UNLESS OTHERWISE DIRECTED BY THE AUTHORITIES HAVING JURISDICTION.
 11. ALL DRUMS SHALL BE APPROXIMATELY PLACED AND MOVED AS NECESSARY TO MAINTAIN ADEQUATE ABUTTER ACCESS AT ALL TIMES. WORK MAY REQUIRE ADDITIONAL SIGNAGE, DRUMS AND OTHER TRAFFIC CONTROL DEVICES, GRADING AND TEMPORARY PAVEMENT FOR PASSAGE OF PEDESTRIAN, BICYCLE, VEHICULAR AND EMERGENCY TRAFFIC THROUGH WORK AREAS BOTH DURING AND AFTER WORK HOURS, TO MAINTAIN SUCH ACCESS.
 12. THE CONTRACTOR SHALL NOTIFY EACH ABUTTER AT LEAST 24-HOURS IN ADVANCE OF THE START OF ANY WORK THAT WILL REQUIRE THE TEMPORARY CLOSURE OF ACCESS.
 13. THE CONTRACTOR SHALL COORDINATE CONSTRUCTION ACTIVITIES TO ALLOW ACCESS TO THE WORK ZONE BY AGENTS OF PUBLIC AND PRIVATE UTILITY COMPANIES FOR THE PURPOSE OF PROTECTING, REPAIRING, IMPROVING AND/OR REPLACING FACILITIES.
 14. TEMPORARY TRAFFIC LANES WITHIN THE WORK ZONE SHALL BE A MINIMUM OF 11FT WIDE.
 15. CONSTRUCTION WORK ZONE SHALL BE STAGED TO ALLOW FOR CONTINUOUS ACCESS AT DRIVE ENTRANCES AND TO MINIMIZE DETOURS TO CAMBRIDGE ROADS.
 16. THE CONTRACTOR SHALL MAINTAIN ALL EXISTING PEDESTRIAN CROSSINGS. ALTERNATIVE CROSSINGS SHALL BE PROVIDED WHEN EXISTING CROSSINGS ARE DISRUPTED BY CONSTRUCTION ACTIVITY. TEMPORARY LOCATIONS, SAFETY SIGNAGE AND SAFETY CONTROLS SHALL BE REVIEWED BY THE ENGINEER PRIOR TO IMPLEMENTATION.
 17. THE CONTRACTOR IS REQUIRED TO USE POLICE DETAILS TO MAINTAIN THE SAFETY OF PEDESTRIAN, BICYCLE AND VEHICULAR TRAFFIC.
 18. ADVISORY SPEED PLATES (W13-1) SHALL BE USED IF APPROPRIATE AND AS DIRECTED BY AUTHORITIES HAVING JURISDICTION.
 19. GRADE SEPARATIONS IN EXCESS OF 2" DURING NON WORKING HOURS WILL REQUIRE DELINEATION BY DRUMS.
 20. EXCAVATION EDGES IN EXCESS OF 4" DEEP SHALL BE PROTECTED DURING NON-WORKING HOURS BY BACKFILLING WITH A WEDGE OF GRAVEL COMPACTED TO A 4:1 SLOPE.
 21. THE CONTRACTOR SHALL PROPERLY SECURE ALL TEMPORARY SIGNAGE AND TRAFFIC CONTROL DEVICES.
 22. THE CONTRACTOR SHALL PROTECT PEDESTRIAN WALKWAYS ALONG WORK ZONE WITH CONCRETE BARRIERS AND FENCING.
 23. TRAFFIC CONTROL MEASURES SHOWN ARE MINIMUM REQUIREMENTS. CONTRACTOR SHALL BE FULLY RESPONSIBLE FOR ADDITIONAL CONTROL MEASURES AS REQUIRED TO MAINTAIN VEHICULAR, BICYCLE AND PEDESTRIAN TRAFFIC.

TO BE USED IN CONJUNCTION WITH THE PROPOSED LANE CLOSURE DETAILS AND DURING CONSTRUCTION STAGING AND AS DIRECTED BY THE ENGINEER.

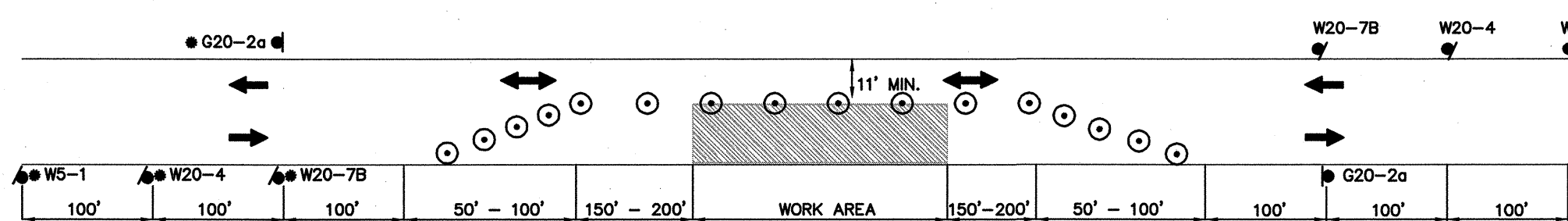


PEDESTRIAN BYPASS NOTES:

1. ADDITIONAL ADVANCE WARNING MAY BE NECESSARY.
2. CONTROLS FOR PEDESTRIAN TRAFFIC ONLY, ARE SHOWN. VEHICULAR TRAFFIC SHALL BE MAINTAINED AS SHOWN ELSEWHERE.
3. STREET LIGHTING SHOULD BE CONSIDERED WHEN LOCATING CONTROL DEVICES.
4. → DIRECTION OF PEDESTRIAN TRAVEL.
5. IF THE WORK ZONE DOES NOT PERMIT PEDESTRIANS TO TRAVEL ADJACENT TO IT AS SHOWN IN PEDESTRIAN BYPASS TYPE I, TEMPORARY CROSSWALKS WITH APPROPRIATE SIGNS SHALL BE INSTALLED TO CROSS PEDESTRIANS TO THE OPPOSITE SIDE OF THE STREET AS SHOWN IN PEDESTRIAN BYPASS TYPE II, AND AS DIRECTED BY THE AUTHORITIES HAVING JURISDICTION.

PEDESTRIAN BYPASS

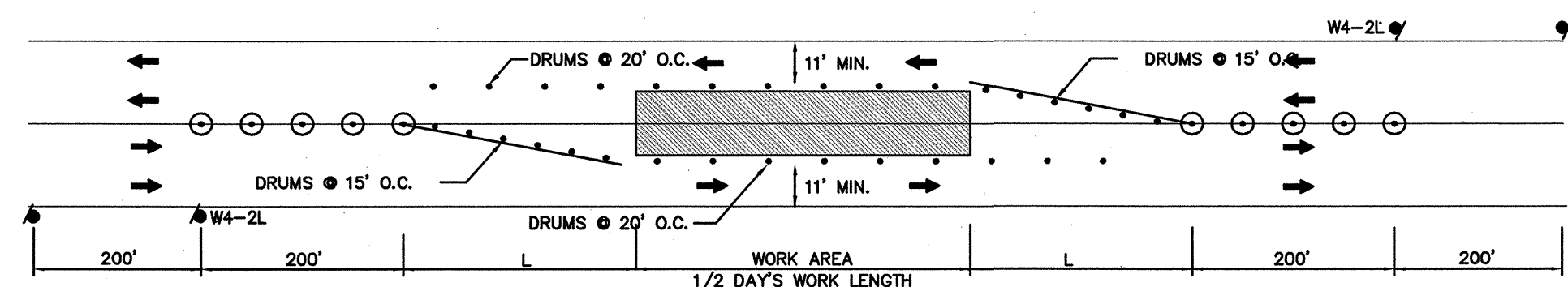
N.T.S.



TYPICAL TWO WAY STREET ALTERNATING LANE

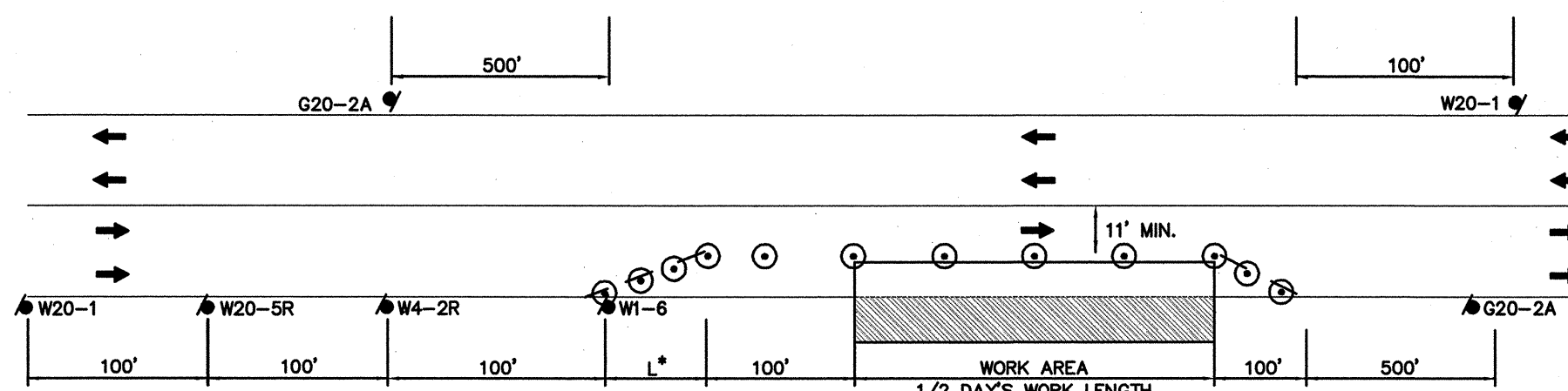
N.T.S.

NOTE: THIS DETAIL SHOWS A RIGHT LANE CLOSURE DETAIL. THIS DETAIL CAN ALSO BE USED FOR LEFT LANE CLOSURES, WITH THE SIGN PLACEMENT REVERSED AS APPROPRIATE.



TYPICAL INTERIOR LANE CLOSURE

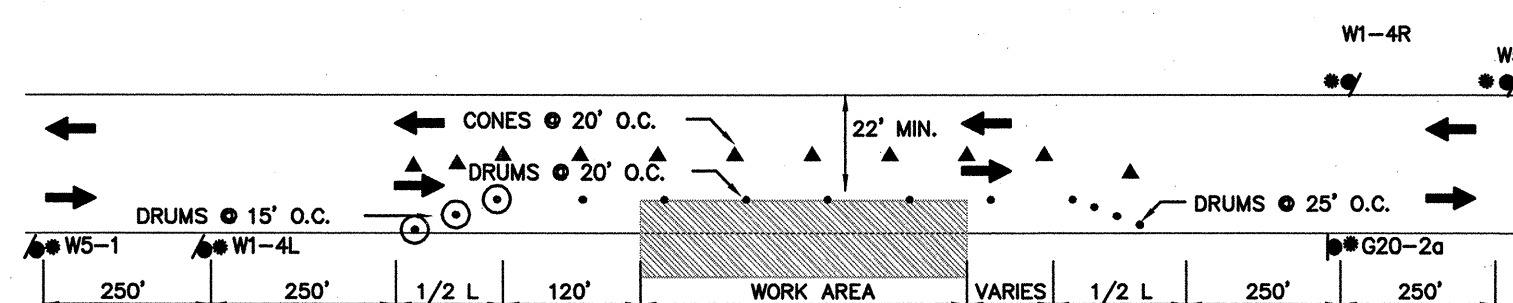
N.T.S.



TYPICAL ONE LANE CLOSURE - RIGHT

N.T.S.

*L = $\frac{WS^2}{60}$ L=TAPER LENGTH
 W=WIDTH OF ROADWAY TO BE SHIFTED OR REDIRECTED
 S=POSTED SPEED LIMIT



TYPICAL TWO WAY STREET LANE SHIFT

N.T.S.

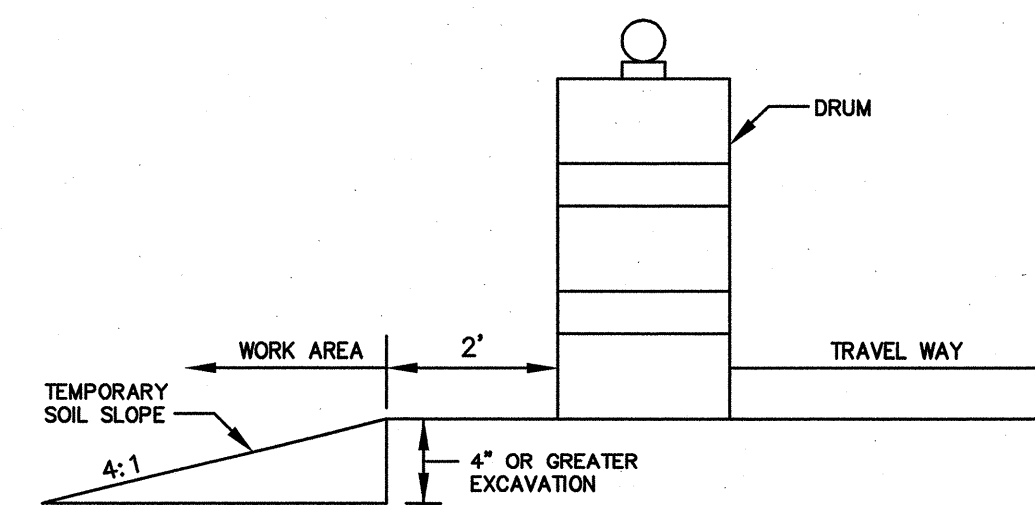
N.T.S.

NOTE: THIS DETAIL SHOWS A RIGHT LANE CLOSURE DETAIL. THIS DETAIL CAN ALSO BE USED FOR LEFT LANE CLOSURES, WITH THE SIGN PLACEMENT REVERSED AS APPROPRIATE.

*L = $\frac{WS^2}{60}$ L=TAPER LENGTH
 W=WIDTH OF ROADWAY TO BE SHIFTED OR REDIRECTED
 S=POSTED SPEED LIMIT

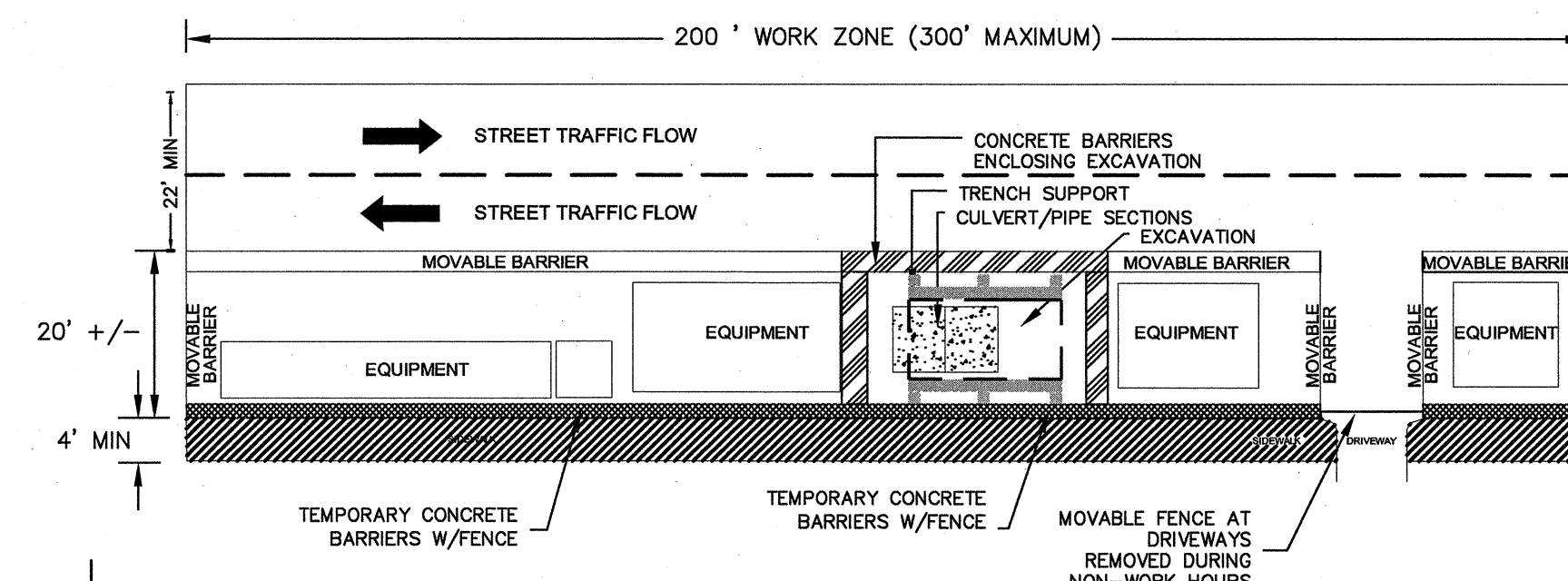
OPERATIONAL SIGNING

ALL DRUMS AND SIGNS ARE SHOWN AS THEY SHOULD APPEAR DURING THE WORKING DAY, OR WHILE OPERATING IN THE WORK ZONE.

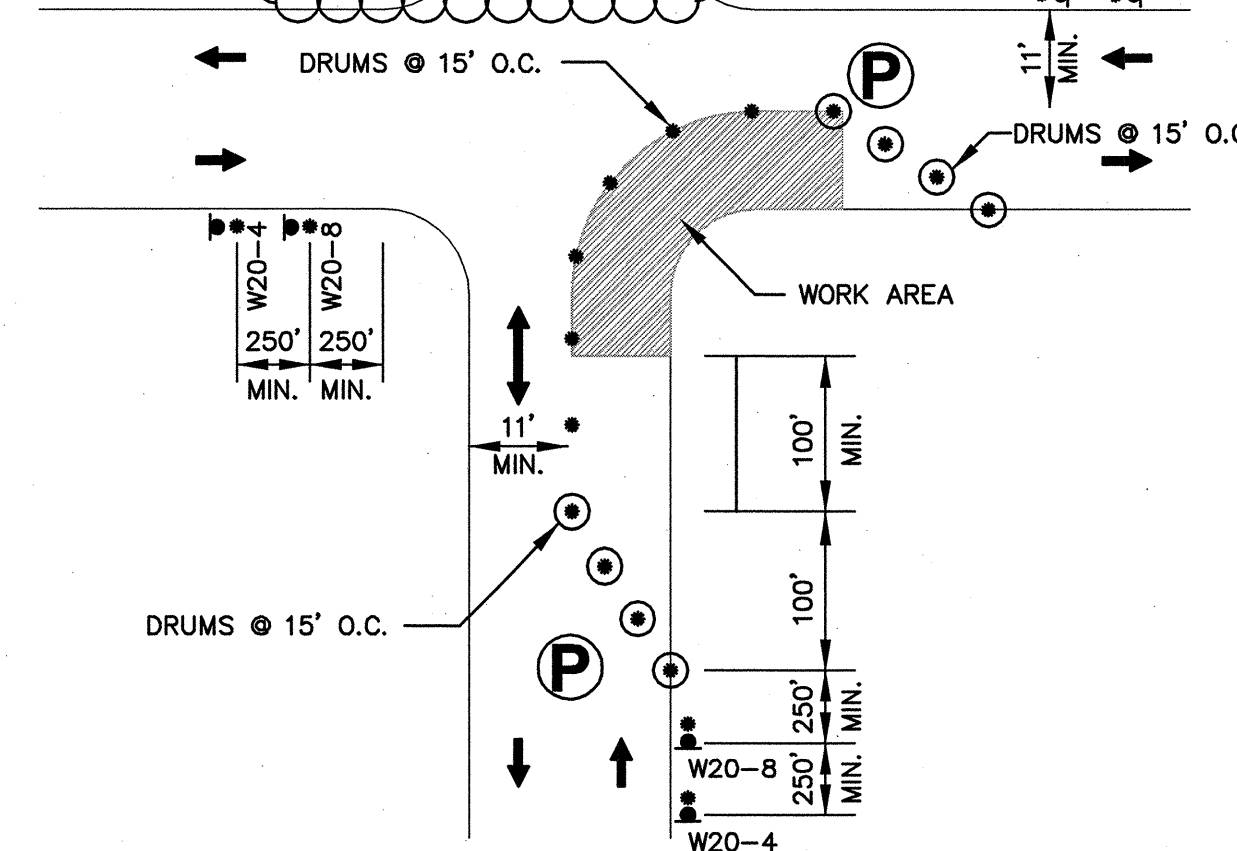
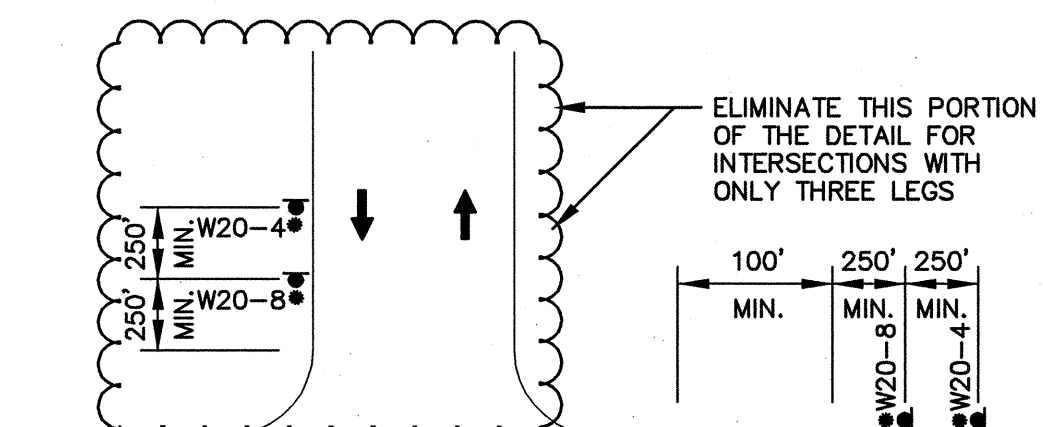


ROADWAY SLOPE PROTECTION

N.T.S.



TYPICAL WORKZONE DETAIL

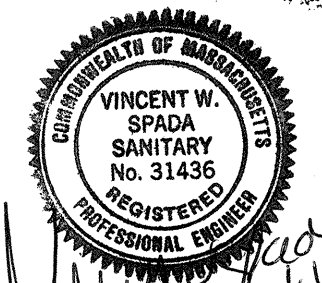


ONE LANE BI-DIRECTIONAL TRAFFIC AT INTERSECTIONS

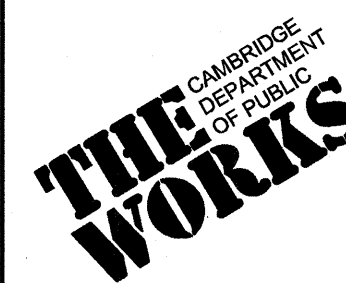
N.T.S.

NOTE: ADVANCE WARNING SIGN PLACEMENT TO BE ADJUSTED AS NECESSARY.

CONFORMED SET



Scale	AS NOTED		
Date	SEPTEMBER 1, 2010		
Job No.	1998400.12		
Designed by	SFJ		
Drawn by	NJE		
Checked by	FGA	No.	Description
Approved by	VWS		REVISIONS



CITY OF CAMBRIDGE, MASSACHUSETTS
 CAMBRIDGEPARK DRIVE AREA DRAINAGE IMPROVEMENTS
 CONTRACT NO. 12
 TRAFFIC MANAGEMENT
 GENERAL NOTES AND DETAILS

Sheet No. TG-1
 File No.

TEMPORARY CONSTRUCTION SIGNS

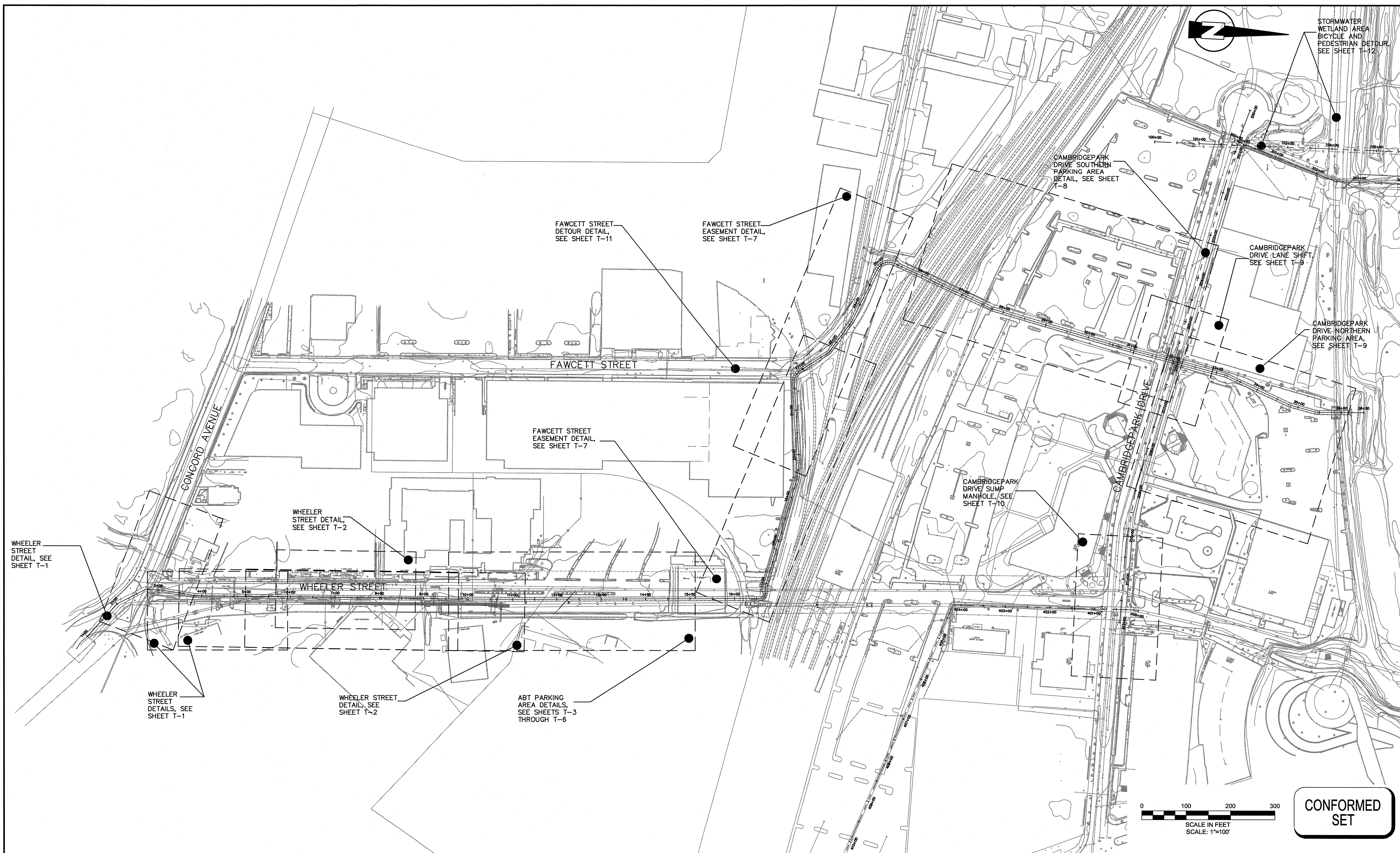
IDENTIFICATION NUMBER	SIZE OF SIGN		TEXT	TEXT DIMENSIONS			COLOR			POST SIZE AND NUMBER REQUIRED	UNIT AREA IN SQUARE FEET
	WIDTH	HEIGHT		LETTER HEIGHT	VERTICAL SPACING	ARROW	BACK-GROUND	LEGEND	BORDER		
M4-8A	24"	18"		MUTCD STANDARD DETAIL			MUTCD STANDARD DETAIL			-	3
M4-9R OR M4-9L	30"	24"								-	5
M4-9V	30"	24"								-	5
R11-2	48"	30"								-	10.0
R11-3F	60"	30"								-	12.5
R11-4	60"	30"								-	12.5
W1-4R OR W1-4L	30"	30"								-	6.25
W4-2R OR W4-2L	36"	36"								-	9
W5-1	36"	36"								-	9
W6-3	36"	36"								-	9
W13-1	24"	24"								-	4
W20-1	36"	36"								-	9
W20-4	36"	36"								-	9
W20-5R OR W20-5L	36"	36"								-	9
W9-1L OR W9-1R	36"	36"								-	9
W20-7b	36"	36"								-	9
W20-8	48"	24"								-	8
G20-2a	48"	24"								-	8
R5-9L OR R5-9R	30"	24"								-	5
W1-6	60"	30"		MUTCD STANDARD DETAIL			MUTCD STANDARD DETAIL			-	12.5

IDENTIFICATION NUMBER	SIZE OF SIGN		TEXT	TEXT DIMENSIONS			COLOR			POST SIZE AND NUMBER REQUIRED	UNIT AREA IN SQUARE FEET
	WIDTH	HEIGHT		LETTER HEIGHT	VERTICAL SPACING	ARROW	BACK-GROUND	LEGEND	BORDER		
P-1	60"	30"		MUTCD STANDARD DETAIL			MUTCD STANDARD DETAIL			-	12.5
P-2	60"	30"								-	12.5
P-3	36"	18"								-	4.5
P-4	36"	18"								-	4.5
M4-9a	30"	24"								-	5
D11-1	24"	18"								-	3
M4-8	12"	6"		MUTCD STANDARD DETAIL			MUTCD STANDARD DETAIL			-	0.5

LEGEND	
	- BARREL WITH FLASHER
	- CONE
	- WORK ZONE
	- TEMPORARY TRAVEL LANE
	- CONCRETE BARRIER
	- TRAFFIC FLOW
	- CONSTRUCTION SIGN
	- POLICE DETAIL

CONFORMED SET

 SEA SEA CONSULTANTS INC. Scientists/Engineers/Architects	 MWH	 Bioengineering GROUP 18 Commercial Street Salem, MA 01970 T: 978.740.0096 F: 978.740.0097 www.bioengineering.com		Scale: NO SCALE Date: SEPTEMBER 1, 2010 Job No.: 1998400.12 Designed by: SFJ Drawn by: NJE Checked by: FGA Approved by: VWS	 THE WORKS CAMBRIDGE DEPARTMENT OF PUBLIC WORKS	CITY OF CAMBRIDGE, MASSACHUSETTS CAMBRIDGEPARK DRIVE AREA DRAINAGE IMPROVEMENTS CONTRACT NO. 12 TRAFFIC MANAGEMENT LEGEND	Sheet No. TG-2 File No.
---	----------------	--	--	---	--	---	--------------------------------------



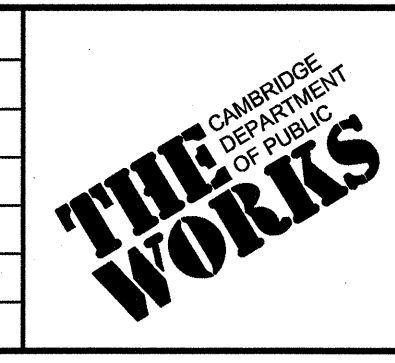
SEA
SEA CONSULTANTS INC.
Scientists/Engineers/Architects

MWH

Bioengineering GROUP
18 Commercial Street
Salem, MA 01970
T: 978.740.0096
F: 978.740.0097
www.bioengineering.com

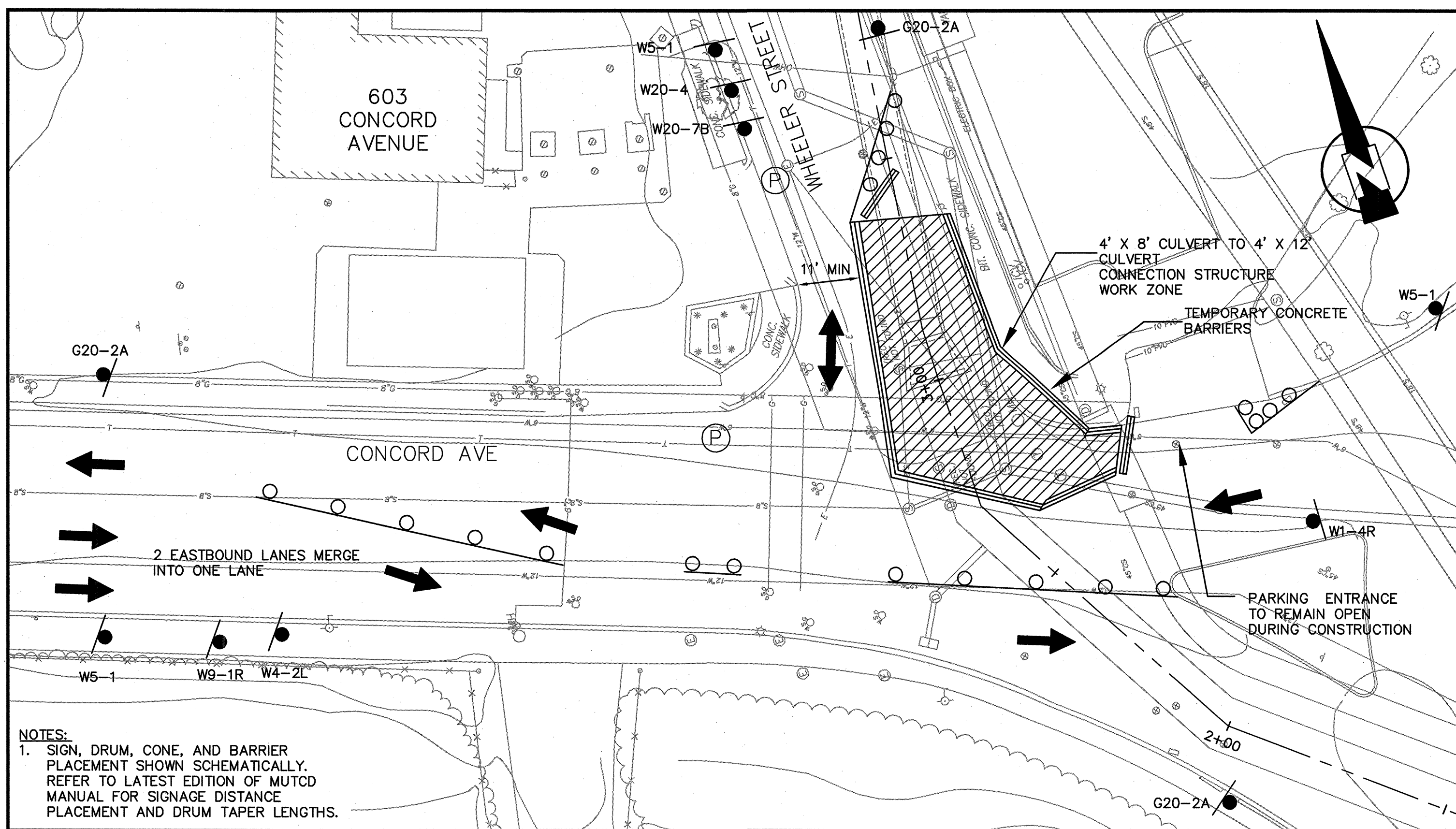
VINCENT W. SPADA
SANITARY
No. 31436
REGISTERED ENGINEER

Scale	AS NOTED			
Date	SEPTEMBER 1, 2010			
Job No.	1998400.12			
Designed by	SFJ			
Drawn by	NJE			
Checked by	FGA	No.	Description	Date
Approved by	VWS		REVISIONS	

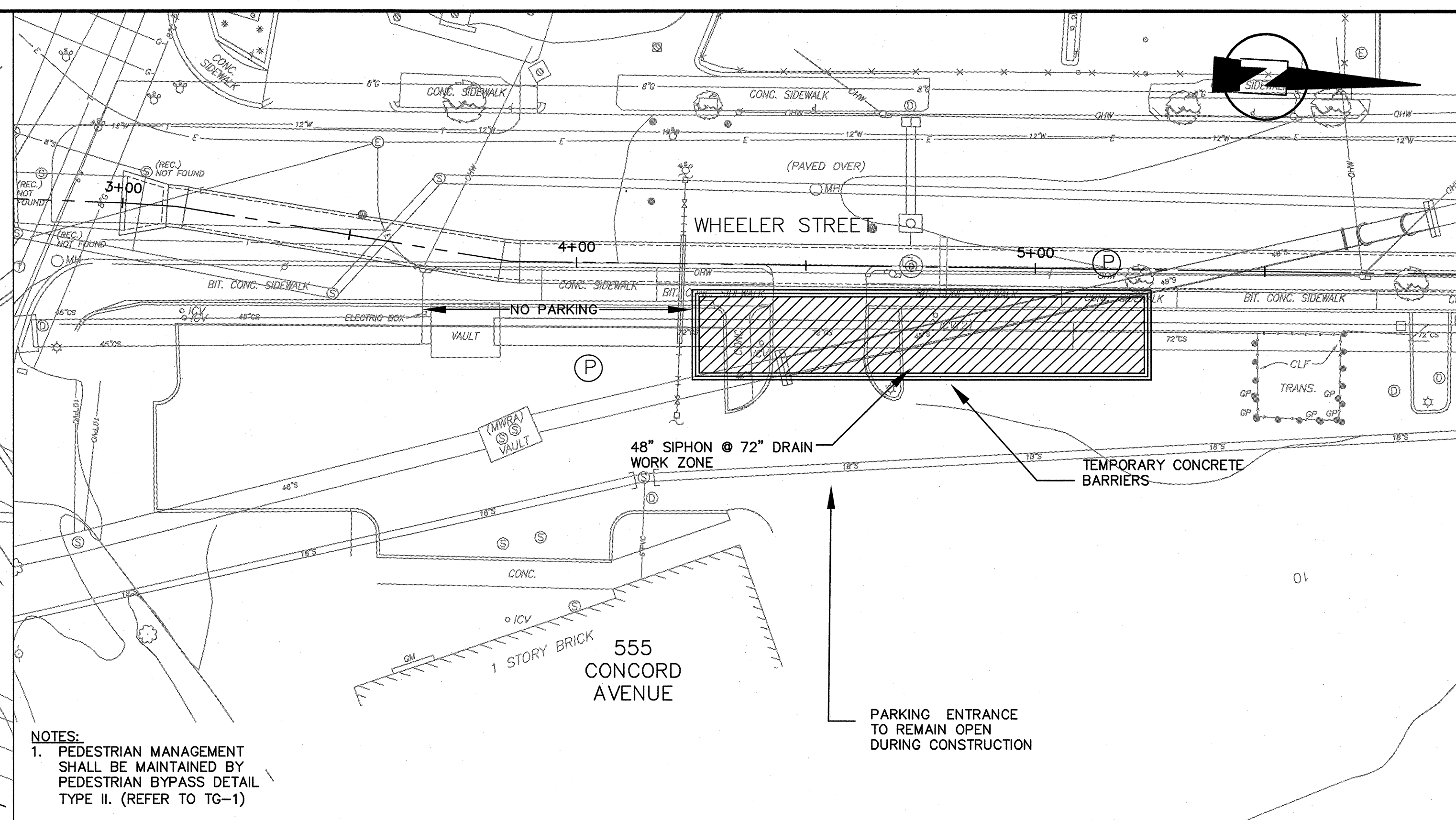


CITY OF CAMBRIDGE, MASSACHUSETTS
CAMBRIDGEPARK DRIVE AREA DRAINAGE IMPROVEMENTS
CONTRACT NO. 12
TRAFFIC MANAGEMENT
KEY PLAN

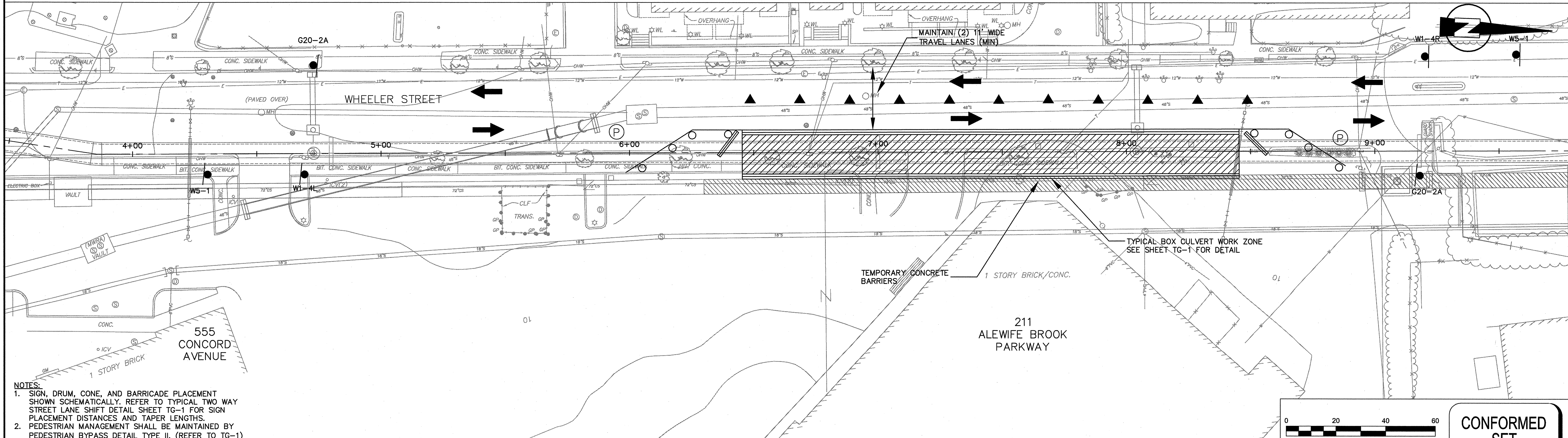
Sheet No. TG-3
File No.



CORNER OF WHEELER AND CONCORD
SCALE: 1" = 20'



#555 CONCORD AVE. PARKING AREA
SCALE: 1" = 20'

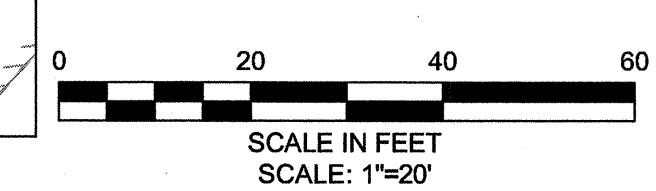


WHEELER STREET CULVERT INSTALLATION
SCALE: 1" = 20'

NOTES:
1. SIGN, DRUM, CONE, AND BARRIER PLACEMENT SHOWN SCHEMATICALLY. REFER TO LATEST EDITION OF MUTCD MANUAL FOR SIGNAGE DISTANCE PLACEMENT AND DRUM TAPER LENGTHS.

NOTES:
1. PEDESTRIAN MANAGEMENT SHALL BE MAINTAINED BY PEDESTRIAN BYPASS DETAIL TYPE II. (REFER TO TG-1)

NOTES:
1. SIGN, DRUM, CONE, AND BARRICADE PLACEMENT SHOWN SCHEMATICALLY. REFER TO TYPICAL TWO WAY STREET LANE SHIFT DETAIL SHEET TG-1 FOR SIGN PLACEMENT DISTANCES AND TAPER LENGTHS.
2. PEDESTRIAN MANAGEMENT SHALL BE MAINTAINED BY PEDESTRIAN BYPASS DETAIL TYPE II. (REFER TO TG-1)



CONFORMED SET

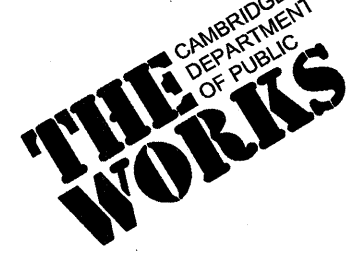
SEA
SEA CONSULTANTS INC.
Scientists/Engineers/Architects

MWH

Bioengineering GROUP
18 Commercial Street
Salem, MA 01970
T: 978.740.0096
F: 978.740.0087
www.bioengineering.com

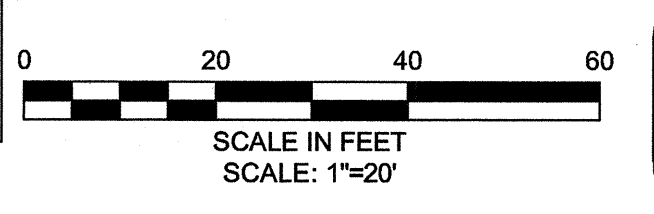
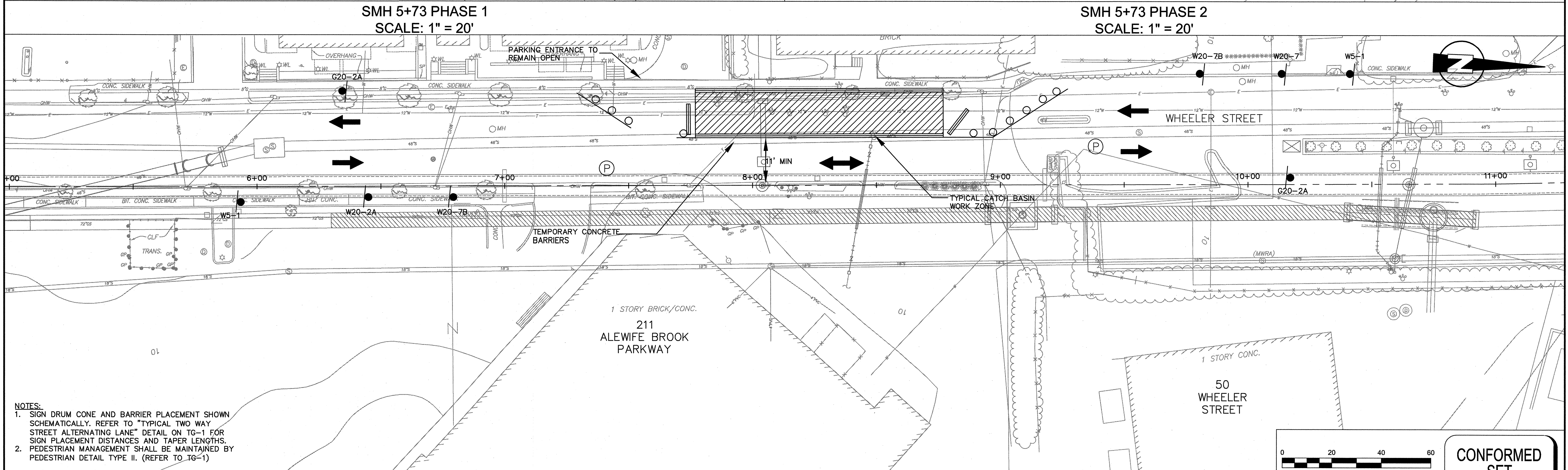
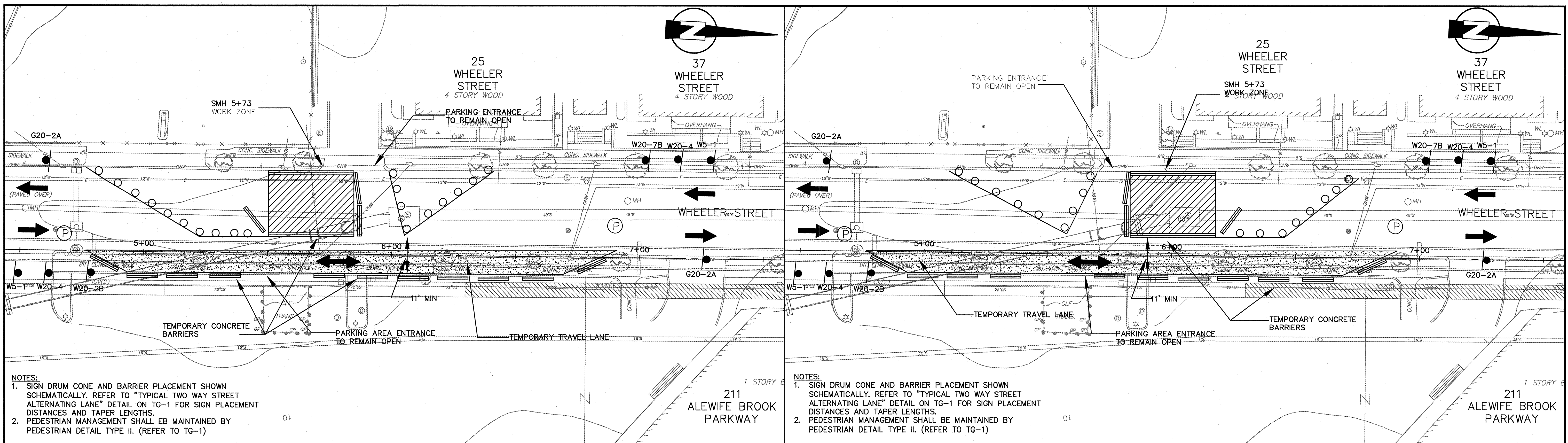


Scale	AS NOTED			
Date	SEPTEMBER 1, 2010			
Job No.	1998400.12			
Designed by	SFJ			
Drawn by	NJE			
Checked by	FGA	No.	Description	Date
Approved by	VWS		REVISIONS	



CITY OF CAMBRIDGE, MASSACHUSETTS
CAMBRIDGEPARK DRIVE AREA DRAINAGE IMPROVEMENTS
CONTRACT NO. 12
TRAFFIC MANAGEMENT PLAN
PHASE 1

Sheet No. T-1
File No.



CONFORMED SET

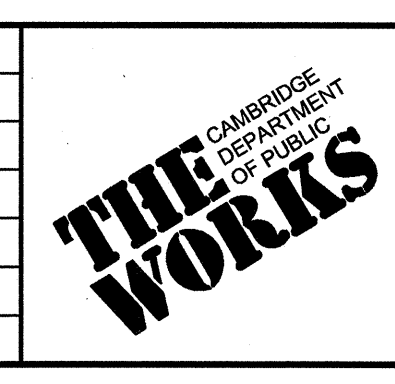
SEA
SEA CONSULTANTS INC.
Scientists/Engineers/Architects

MWH

Bioengineering GROUP
18 Commercial Street
Salem, MA 01970
T: 978.740.0096
F: 978.740.0097
www.bioengineering.com

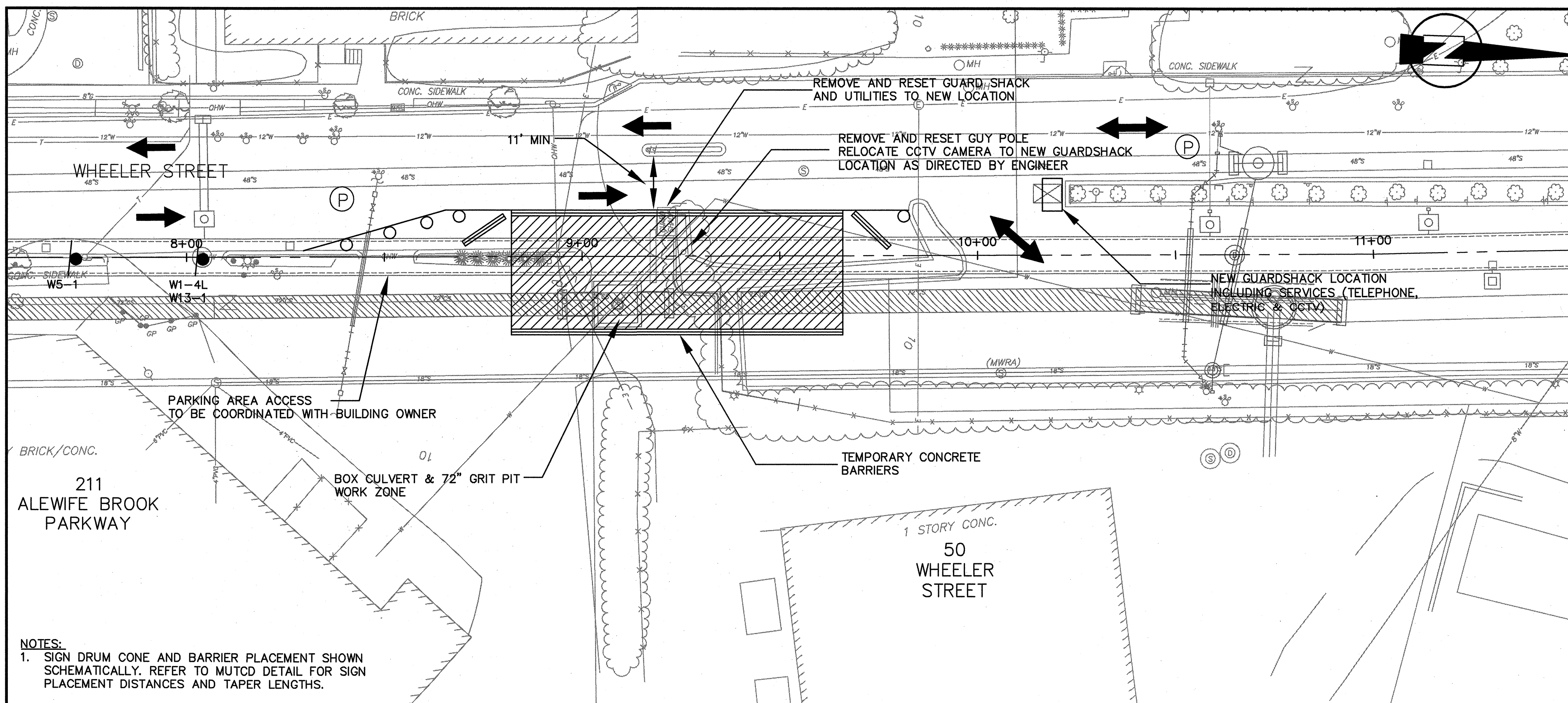
VINCENT W. SPADA
SANITARY
No. 31436
REGISTERED PROFESSIONAL ENGINEER

Scale	1" = 20'			
Date	SEPTEMBER 1, 2010			
Job No.	1998400.12			
Designed by	SFJ			
Drawn by	NJE			
Checked by	FGA	No.	Description	Date
Approved by	VWS		REVISIONS	



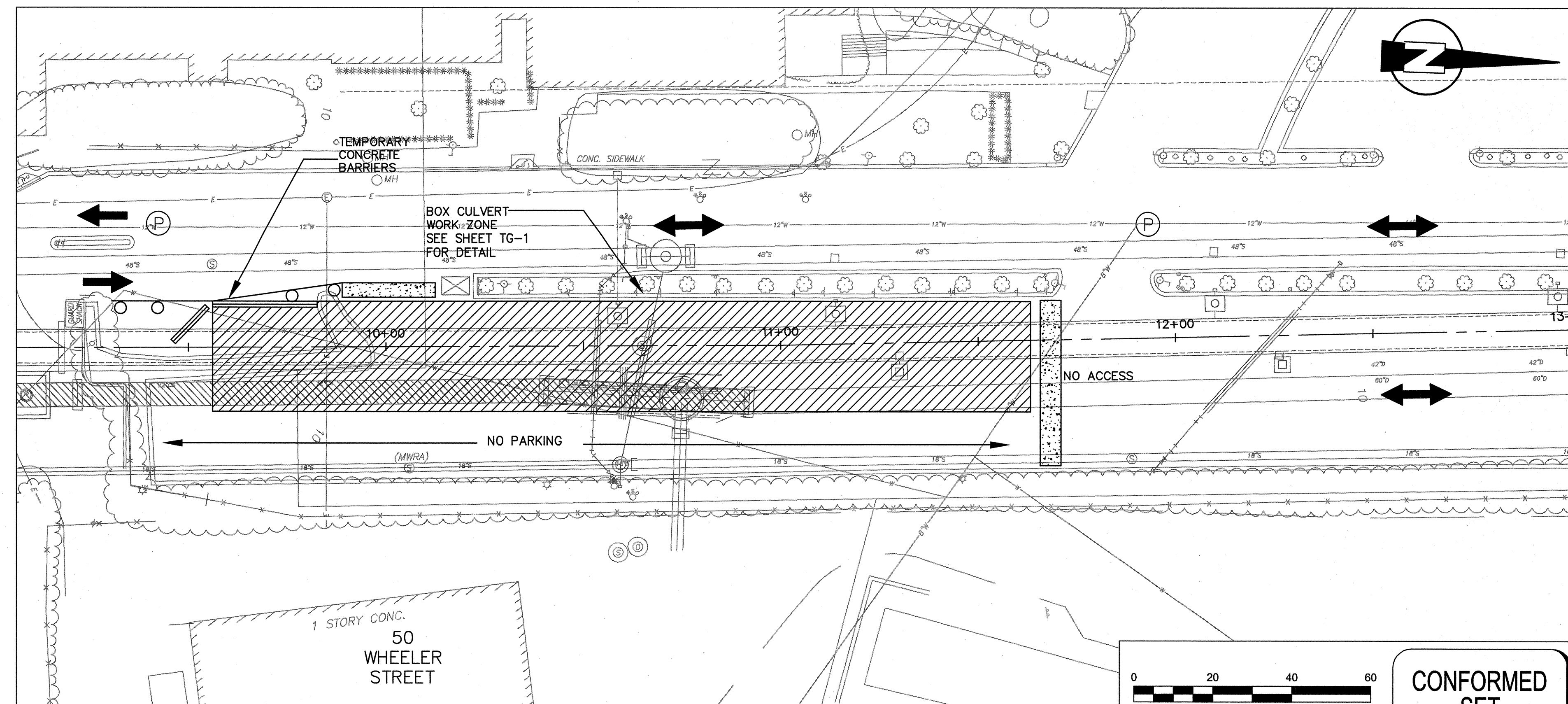
CITY OF CAMBRIDGE, MASSACHUSETTS
CAMBRIDGE PARK DRIVE AREA DRAINAGE IMPROVEMENTS
CONTRACT NO. 12
TRAFFIC MANAGEMENT PLAN
PHASE 2

Sheet No. T-2
File No.

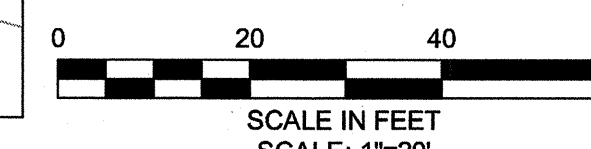


NOTES:
1. SIGN DRUM CONE AND BARRIER PLACEMENT SHOWN SCHEMATICALLY. REFER TO MUTCD DETAIL FOR SIGN PLACEMENT DISTANCES AND TAPER LENGTHS.

ABT PARKING LOT ENTRANCE AREA
SCALE 1" = 20'



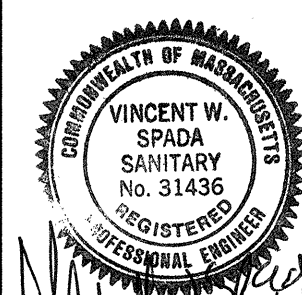
ABT PARKING LOT PHASE 1
SCALE: 1" = 20'



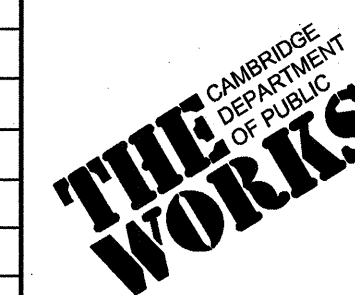
CONFORMED SET

GENERAL NOTES FOR WORK ON ABT SITE:

1. CONSTRUCTION SEQUENCING SHALL BE COORDINATED WITH ABT TO MINIMIZE DISRUPTION AND MAINTAIN BUSINESS ACCESS.
2. STORAGE OF CONSTRUCTION EQUIPMENT AND MATERIALS SHALL BE CONFINED TO THE CONSTRUCTION WORK ZONE.
3. CONSTRUCTION ACCESS ALONG ABT SITE SHALL BE AS NEEDED FOR THE CONSTRUCTION WORK ON THE ABT SITE AND SHALL NOT BE USED AS A PASS THROUGH ACCESS TO OTHER SECTIONS OF THE PROJECT OUTSIDE ABT SITE.
4. CONTRACTOR SHALL PROVIDE PERSONNEL ON SITE TO DIRECT AND CONTROL TRAFFIC AND MAINTAIN PEDESTRIAN ACCESS TO THE SITE BUILDINGS.
5. CONTRACTOR TO PROVIDE SIGNAGE AS DIRECTED BY THE ENGINEER TO DIRECT ABT VISITORS TO THE MAIN ENTRANCE.
6. SITE PREPARATION WORK (I.E. SAW CUTTING) SHALL BE PERFORMED ON WEEKENDS.

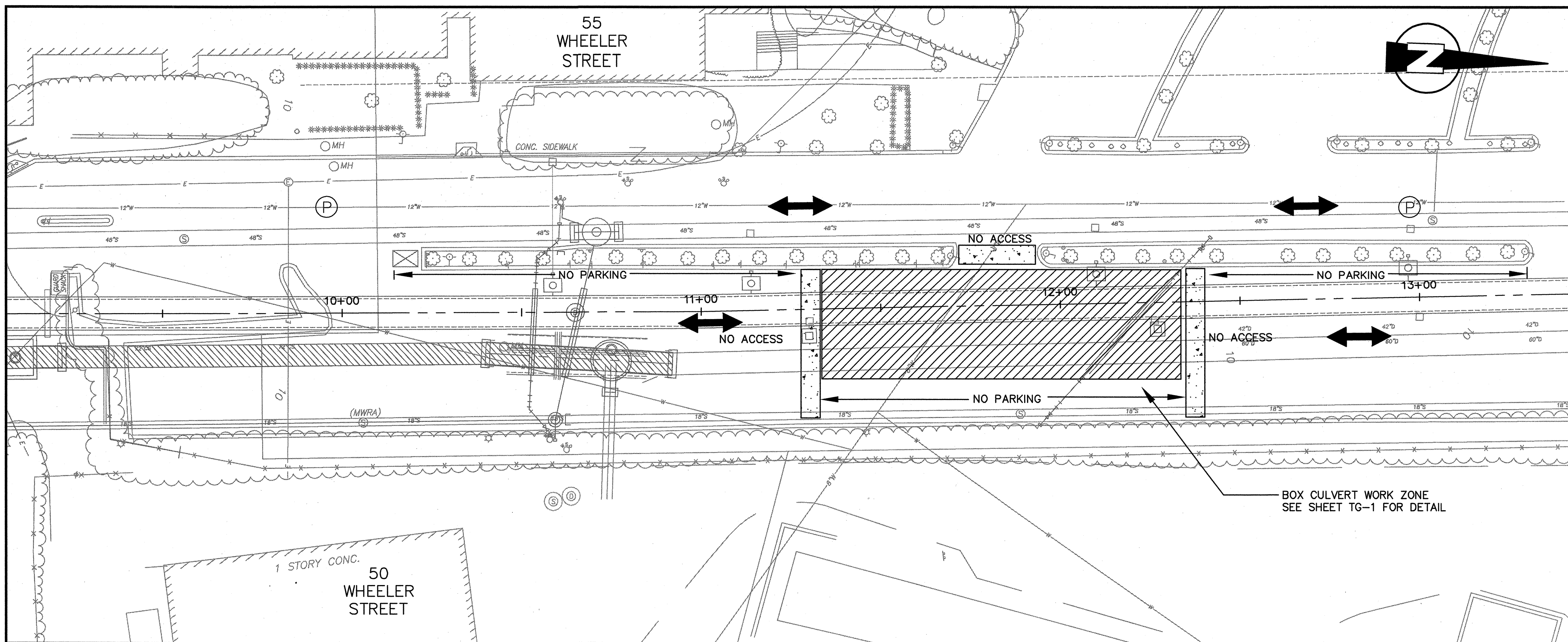


Scale	AS NOTED			
Date	SEPTEMBER 1, 2010			
Job No.	1998400.12			
Designed by	SFJ			
Drawn by	NJE			
Checked by	FGA	No.	Description	Date
Approved by	VWS		REVISIONS	

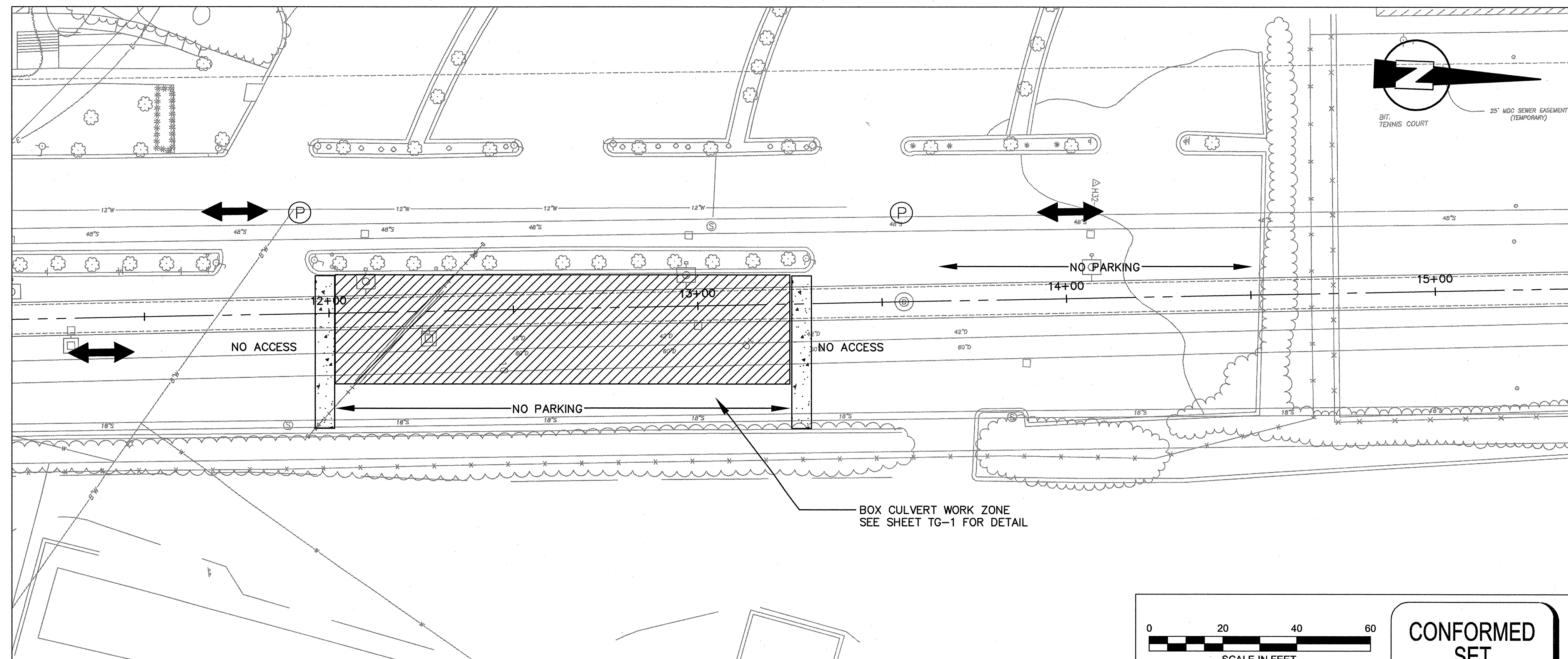


CITY OF CAMBRIDGE, MASSACHUSETTS
CAMBRIDGE PARK DRIVE AREA DRAINAGE IMPROVEMENTS
CONTRACT NO. 12
TRAFFIC MANAGEMENT PLAN
PHASE 3

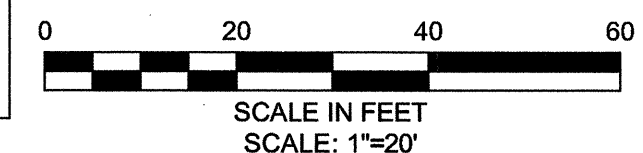
Sheet No.
T-3
File No.



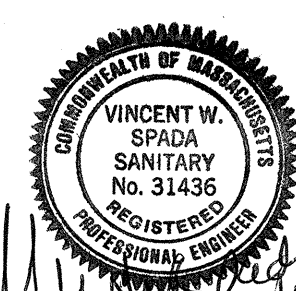
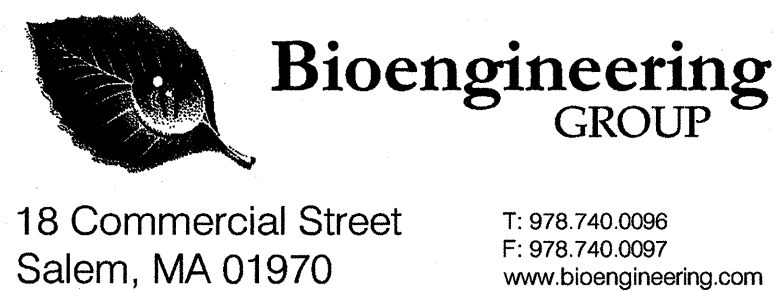
ABT PARKING LOT PHASE 2
SCALE: 1" = 20'



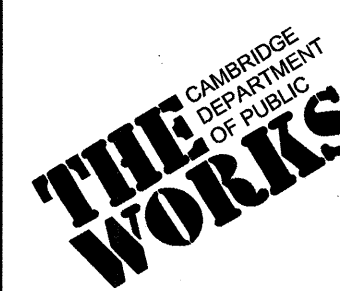
ABT PARKING LOT PHASE 3
SCALE: 1" = 20'



CONFORMED SET

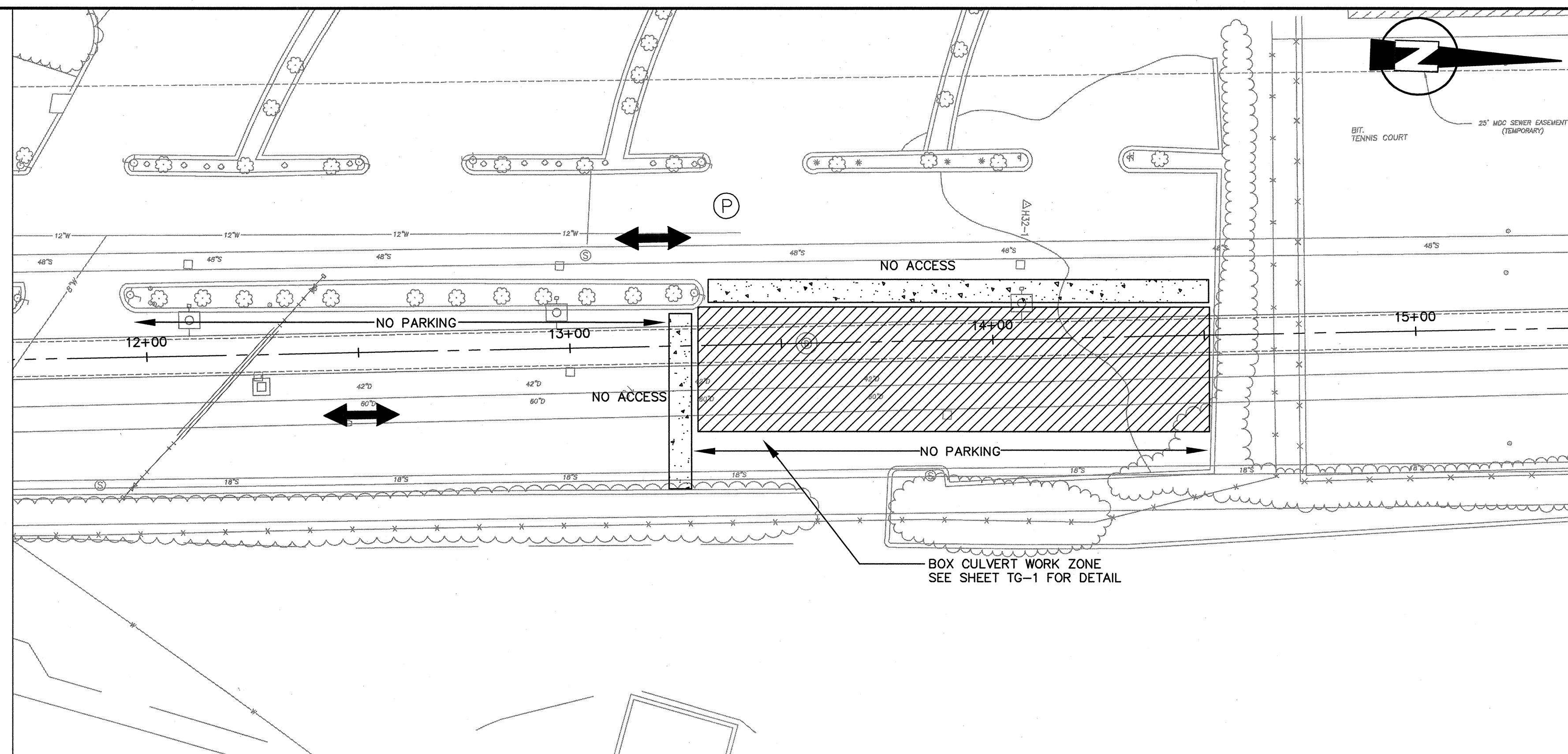


Scale	AS NOTED			
Date	SEPTEMBER 1, 2010			
Job No.	1998400.12			
Designed by	SFJ			
Drawn by	NJE			
Checked by	FGA	No.	Description	Date
Approved by	VWS		REVISIONS	

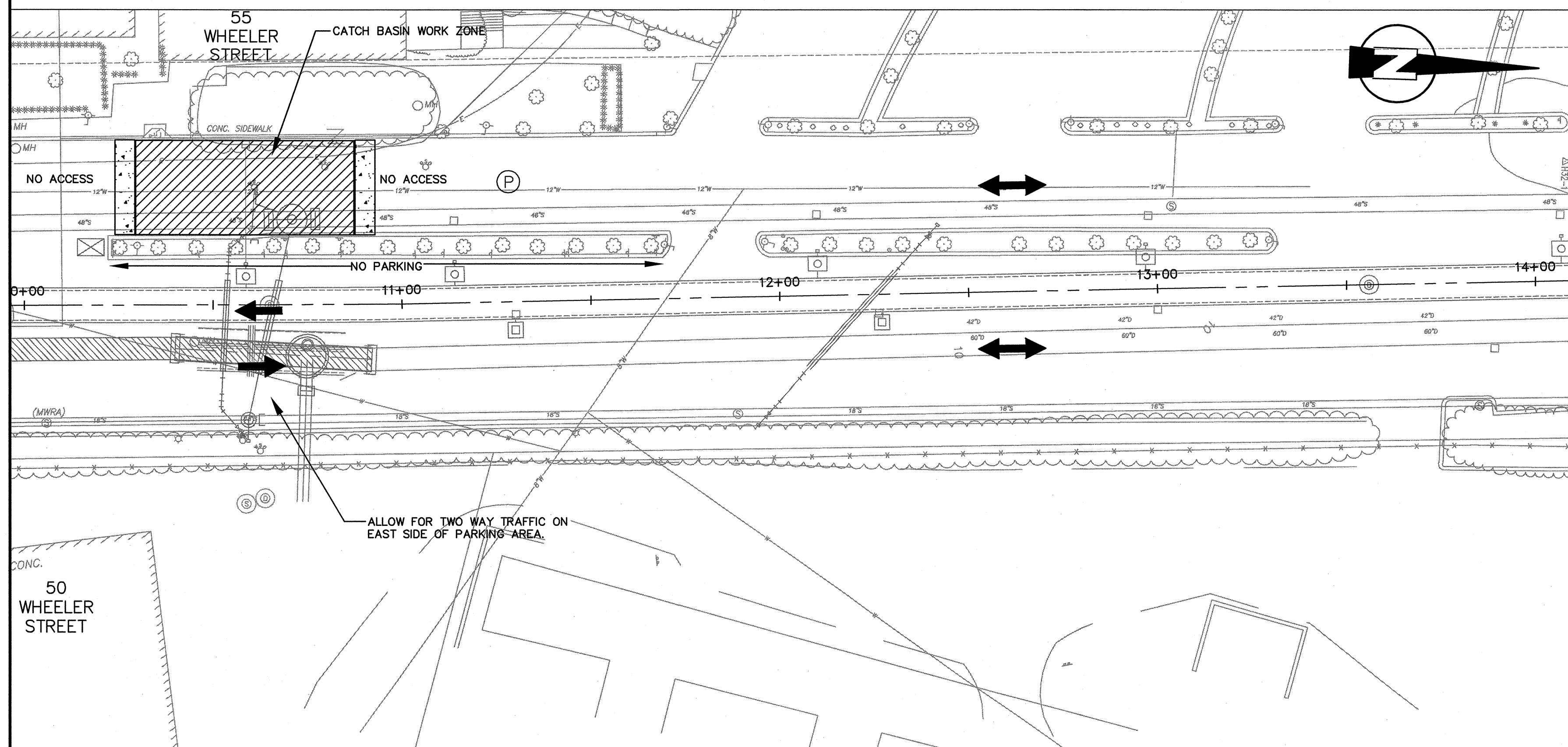


CITY OF CAMBRIDGE, MASSACHUSETTS
CAMBRIDGEPARK DRIVE AREA DRAINAGE IMPROVEMENTS
CONTRACT NO. 12
TRAFFIC MANAGEMENT PLAN
PHASE 4

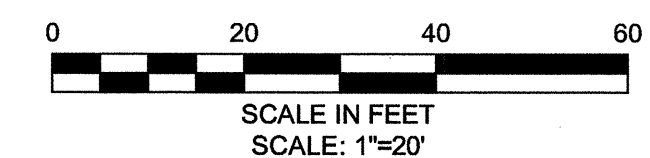
Sheet No.	T-4
File No.	



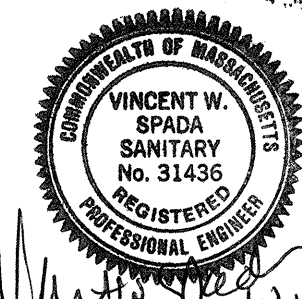
ABT PARKING LOT PHASE 4
SCALE: 1" = 20'



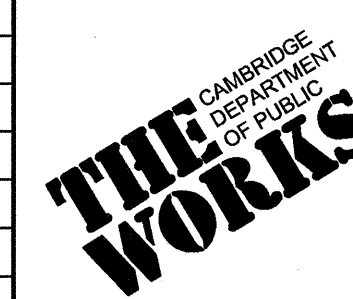
ABT PARKING LOT CATCH BASIN WORK ZONE
SCALE: 1" = 20'



CONFORMED SET

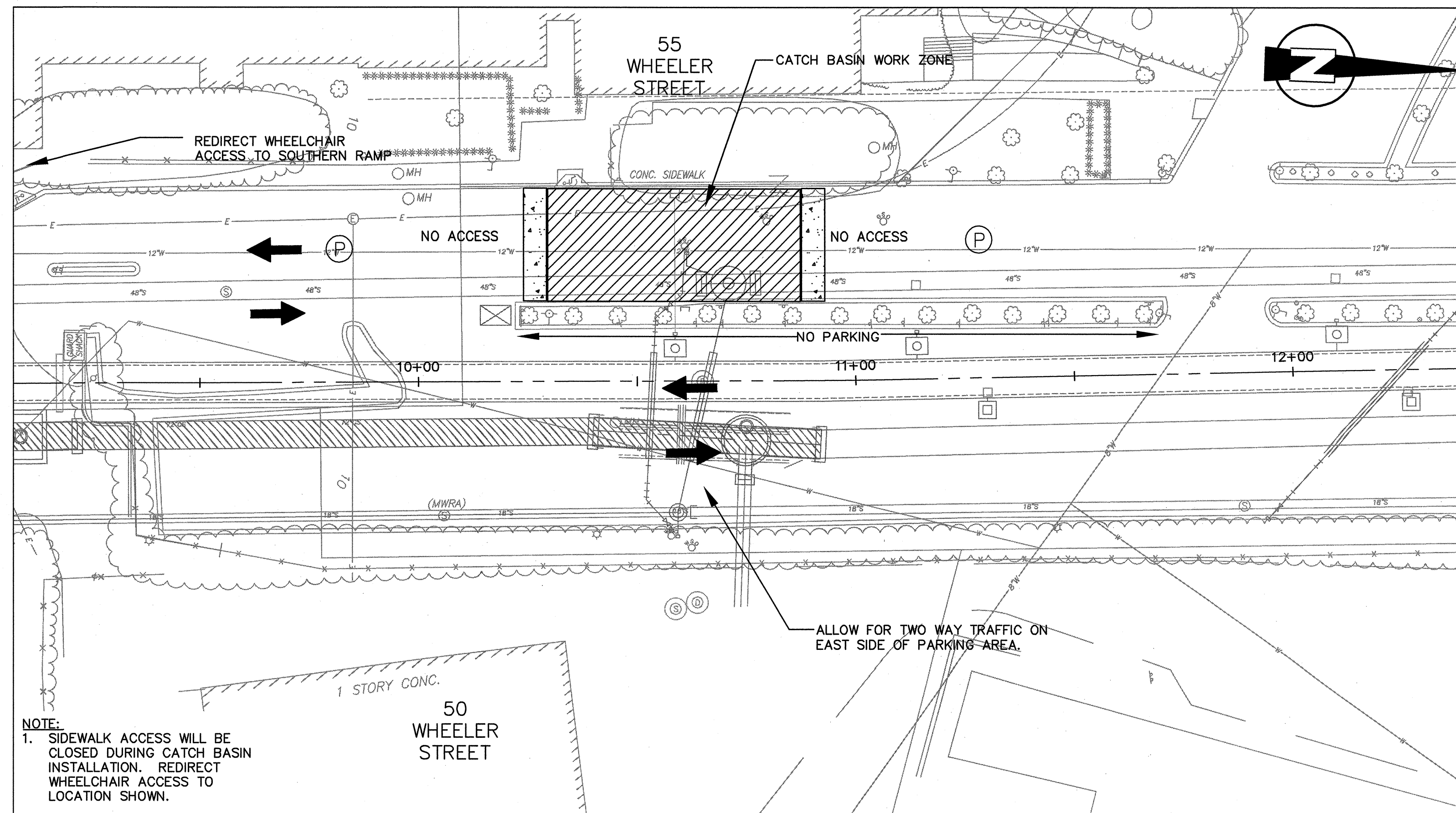


Scale	AS NOTED		
Date	SEPTEMBER 1, 2010		
Job No.	1998400.12		
Designed by	SFJ		
Drawn by	NJE		
Checked by	FGA	No.	Description
Approved by	VWS		REVISIONS
			Date

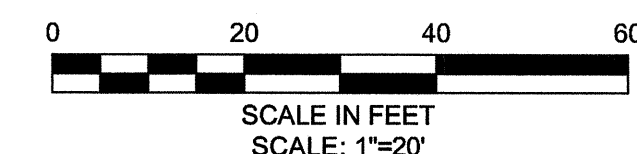


CITY OF CAMBRIDGE, MASSACHUSETTS
CAMBRIDGEPARK DRIVE AREA DRAINAGE IMPROVEMENTS
CONTRACT NO. 12
TRAFFIC MANAGEMENT PLAN
PHASE 5

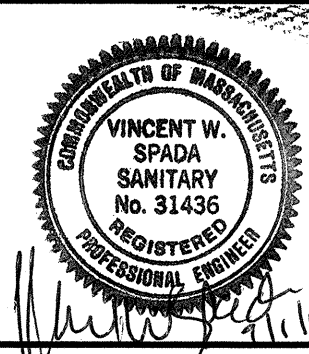
Sheet No. T-5
File No.



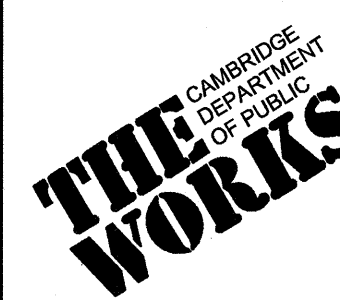
ABT PARKING LOT CATCH BASIN WORK ZONE
SCALE: 1" = 20'



CONFORMED SET



Scale	AS NOTED		
Date	SEPTEMBER 1, 2010		
Job No.	1998400.12		
Designed by	SFJ		
Drawn by	NJE		
Checked by	FGA	No.	Description
Approved by	VWS		Date



CITY OF CAMBRIDGE, MASSACHUSETTS
CAMBRIDGEPARK DRIVE AREA DRAINAGE IMPROVEMENTS
CONTRACT NO. 12
TRAFFIC MANAGEMENT PLAN
PHASE 6

Sheet No. T-6
File No.