

# CAMBRIDGEPARK DRIVE AREA DRAINAGE IMPROVEMENTS AND STORMWATER WETLAND PROJECT

Project Information for  
Reservoir Lofts  
Wheeler Street, Cambridge  
December 12, 2011



# Presentation Outline

- Project Overview – Catherine Daly Woodbury
- Construction and Impacts – Tom Ritchie
  - Construction Activities
  - Construction Schedule and Sequence
  - What to Expect During Construction
  - Construction Impacts & Mitigation
  - Lines of Communication
- Questions

# Project Overview

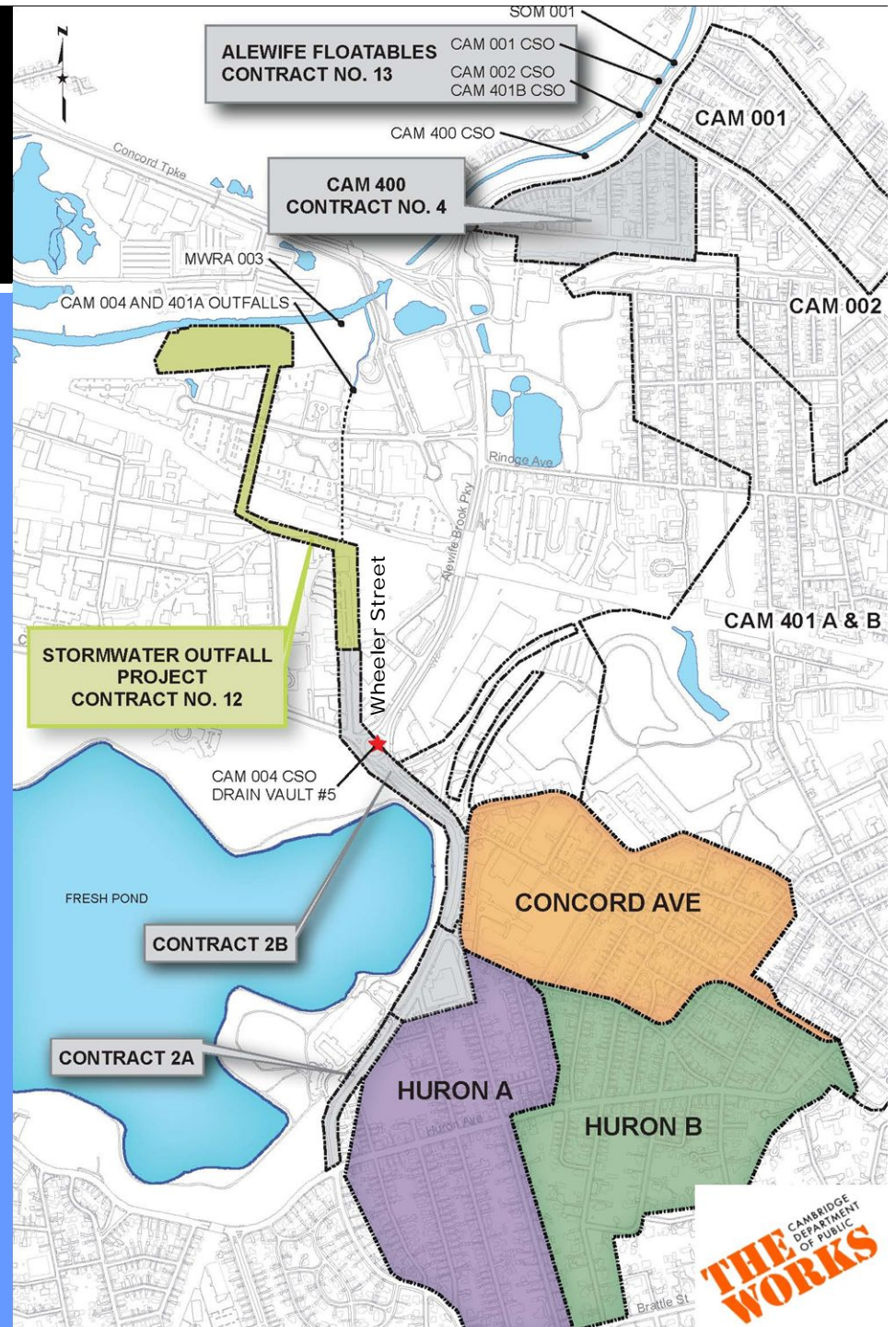
- Court-ordered clean up of Boston Harbor requires implementation of the Long Term Control Plans for Combined Sewer Overflow (CSO) for Alewife Brook
- MWRA's LTCP for Alewife Brook
  - 50 Mg → 7.3 Mg
  - 63 activations → 7 activations

## Complete

- Fresh Pond Parkway (Contracts 2A & 2B) 2001
- Floatables Control (Contract 4) 2010
- Whittemore Ave/CAM 400 (Contract 13) 2011

## Ongoing

- Alewife Reservation Stormwater Wetland (Contract 12) began May 2011
- Design of Sewer Separation in Huron A

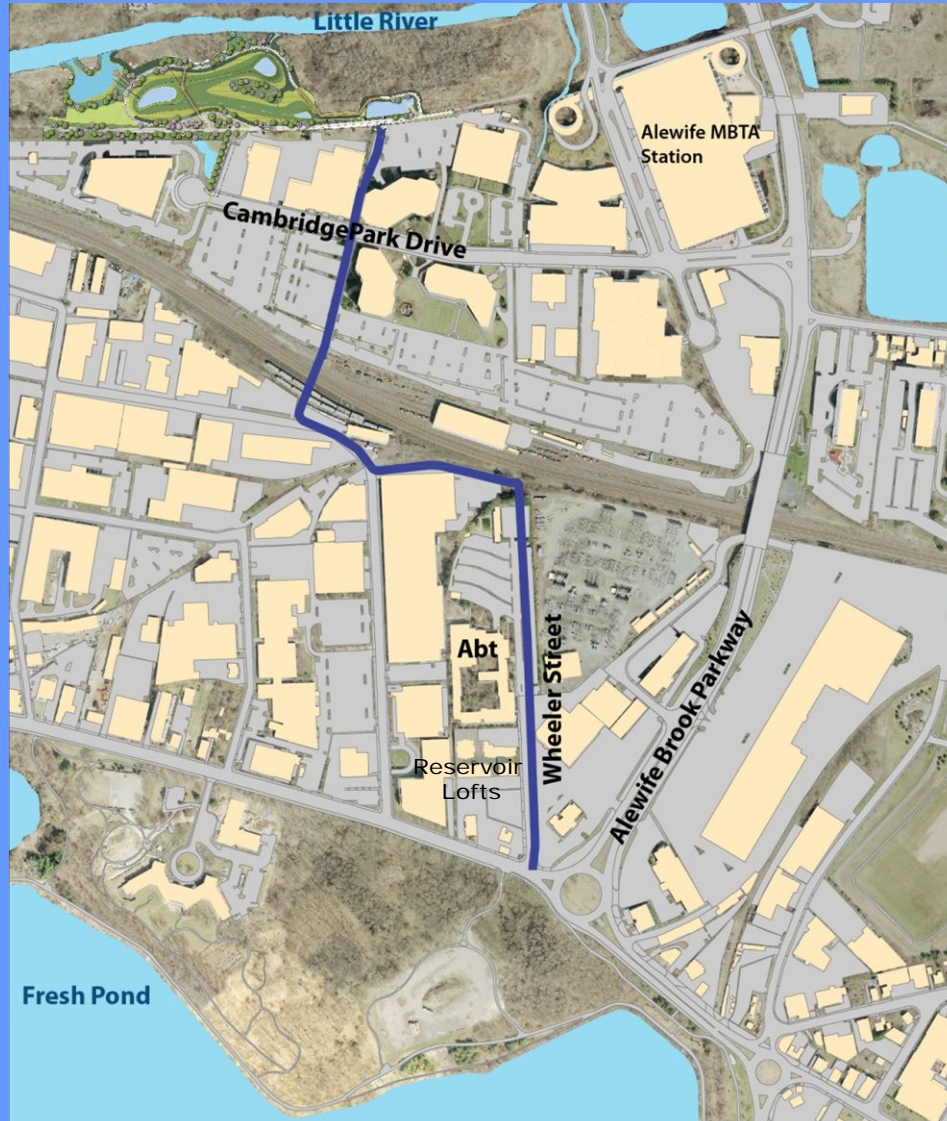




# Project Overview

## CambridgePark Drive Area Drainage Improvements Project

- Box culvert installation
- Alewife Reservation stormwater wetland basin



# Project Overview



Stormwater Wetland Basin



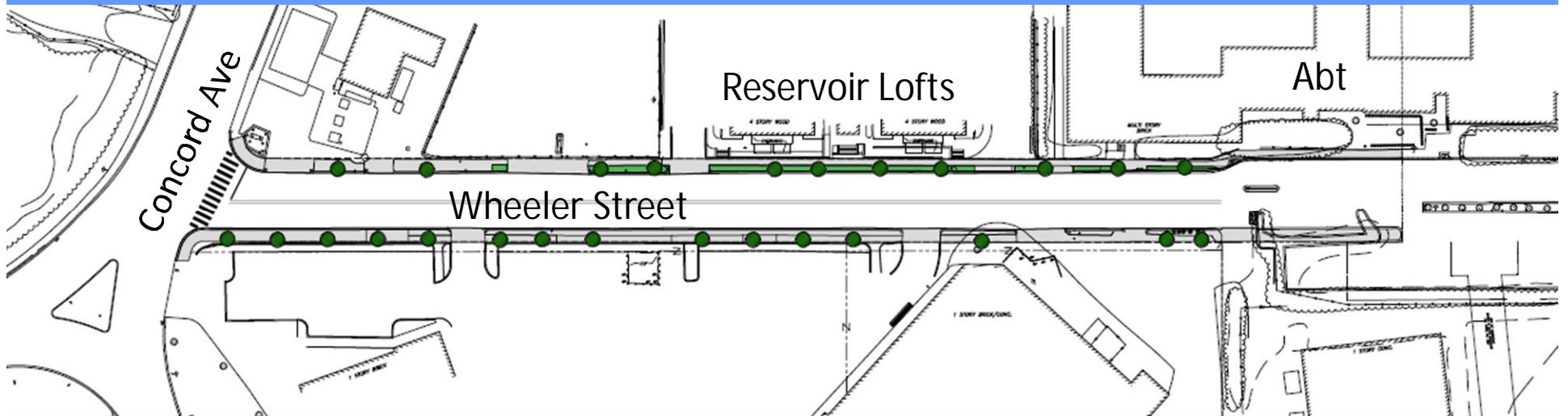
# Construction Activities



- Abt property utility relocations and box culvert
- Relocations of conflicting utilities on Wheeler Street
- Installation of 4'x 8' box culvert
- Surface restoration

# Construction Activities

## Surface Restoration

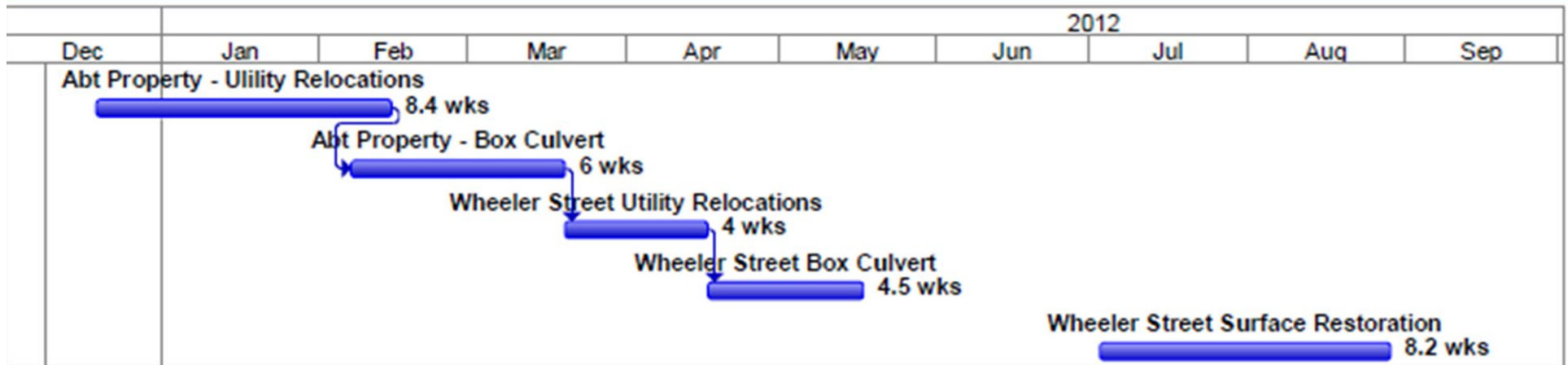


### Final Street Restoration

- Full width pavement
- New sidewalk and curbs
- Grass and trees

# Construction Sequence and Schedule

- Anticipated Start Date – on or about December 19, 2011 on Abt property



- Wheeler Street Restoration – complete in August 2012



# What to Expect During Construction

- Secure Work Zones
  - Jersey barriers and drums
- Temporary excavation support system
- Open cut excavation
  - Saw cut pavement
  - Excavators and dump trucks (load and go)
  - Move excavated soil off site



Box culvert installation at railroad crossing

# Construction Impacts and Mitigation

- Hours of Operation
  - Monday – Friday, 2 p.m. - 11 p.m. during Abt property work
  - Monday – Friday, 7 a.m. – 4 p.m. during Wheeler Street work
- Vibration and Noise
  - Top coat Wheeler Street
- Dust
  - Observe and monitor dust levels



# Construction Impacts and Mitigation

## Traffic Management

- Wheeler Street open to through traffic at all times
- Reduced to one lane during Wheeler Street construction
- Police details to facilitate traffic flow
- Access to driveways maintained at all times
- On-Street parking restricted within work zone





# Lines of Communication

- Questions, Comments or Suggestions During Construction
  - Catherine Woodbury, Project Manager, [cwoodbury@CambridgeMA.gov](mailto:cwoodbury@CambridgeMA.gov)
  - Kelly Dunn, Community Relations Manager, [kdunn@CambridgeMA.gov](mailto:kdunn@CambridgeMA.gov)
- 24-Hour Emergency Assistance
  - Cambridge DPW at 617-349-4800
- Information on City Construction Program
  - [www.cambridgema.gov/theworks/cityprojects.aspx](http://www.cambridgema.gov/theworks/cityprojects.aspx), under *CambridgePark Drive Area Drainage Improvements and Stormwater Wetland Project*



# Questions?