

Revision	By	Appd.	Date
A	100% SUBMISSION	CSS	17.07.19

Issued	By	Appd.	Date
			YYMMDD

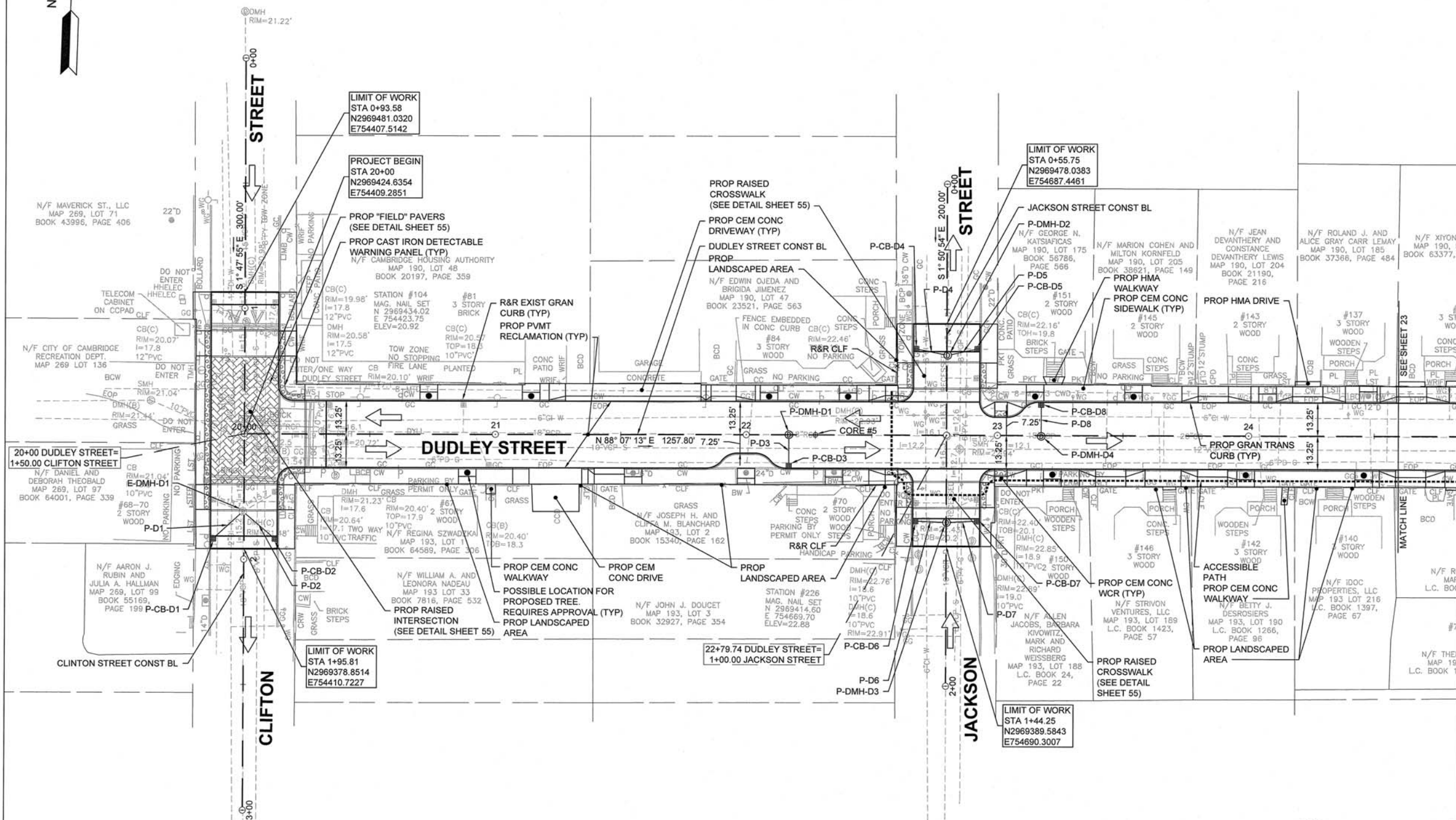
Permit-Seal	Titl	JC	TDI	Date
	Dwn.	Chkd.	Diagn.	16.05.05

Client/Project
Cambridge Department of Public Works

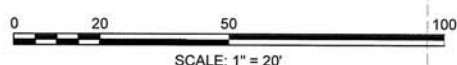
Chapter 90 Contract 22
Healey St., Parker St. & Dudley St.
Cambridge, MA

Title
DUDLEY STREET
CONSTRUCTION PLAN
PART 1 OF 4

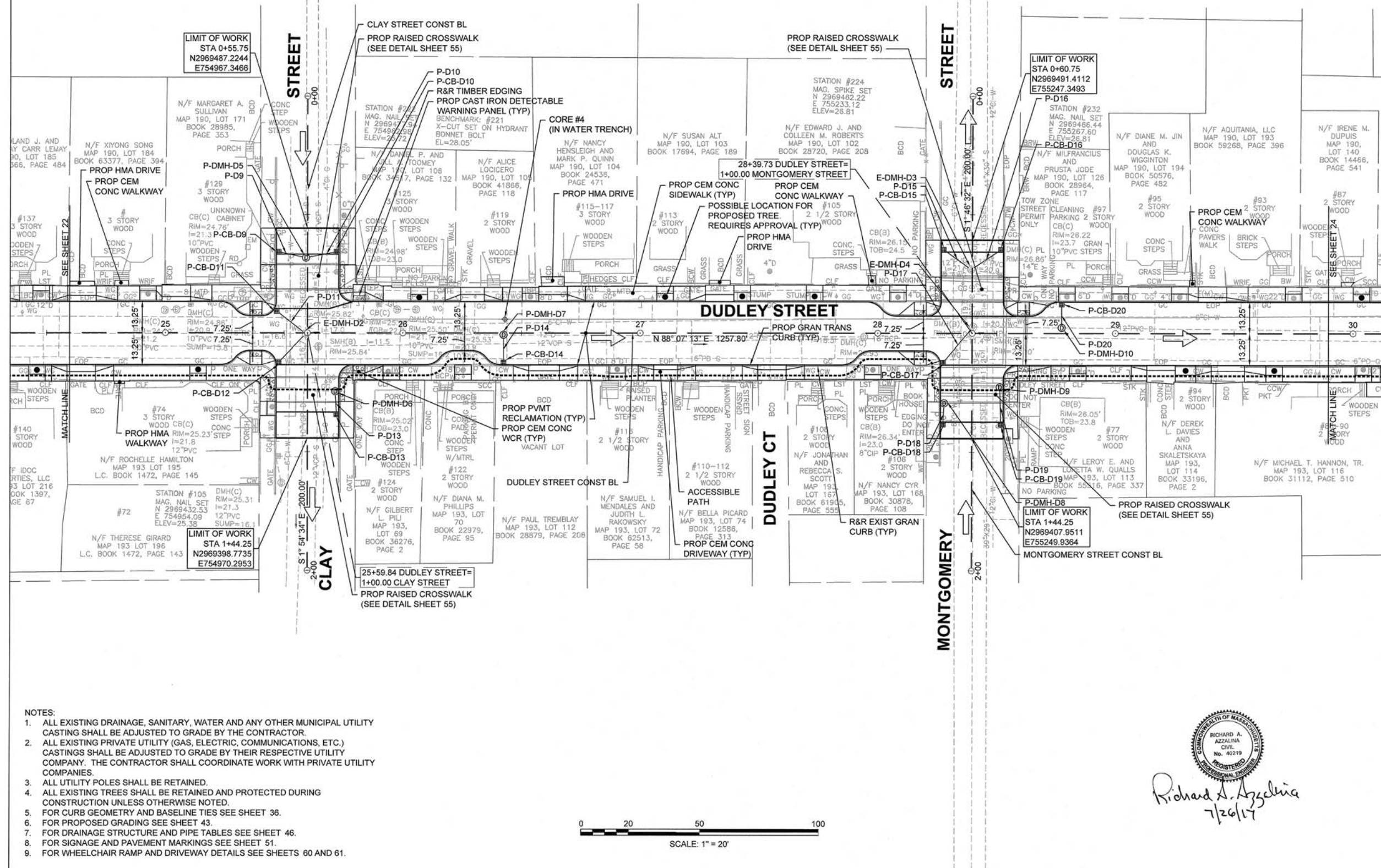
Project No.	Scale	
179410352	1" = 20'	
Drawing No.	Sheet	Revision



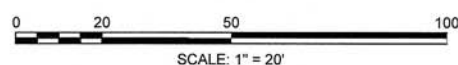
- NOTES:
1. ALL EXISTING DRAINAGE, SANITARY, WATER AND ANY OTHER MUNICIPAL UTILITY CASTING SHALL BE ADJUSTED TO GRADE BY THE CONTRACTOR.
 2. ALL EXISTING PRIVATE UTILITY (GAS, ELECTRIC, COMMUNICATIONS, ETC.) CASTINGS SHALL BE ADJUSTED TO GRADE BY THEIR RESPECTIVE UTILITY COMPANY. THE CONTRACTOR SHALL COORDINATE WORK WITH PRIVATE UTILITY COMPANIES.
 3. ALL UTILITY POLES SHALL BE RETAINED.
 4. ALL EXISTING TREES SHALL BE RETAINED AND PROTECTED DURING CONSTRUCTION UNLESS OTHERWISE NOTED.
 5. FOR CURB GEOMETRY AND BASELINE TIES SEE SHEET 35.
 6. FOR PROPOSED GRADING SEE SHEET 42.
 7. FOR DRAINAGE STRUCTURE AND PIPE TABLES SEE SHEET 46.
 8. FOR SIGNAGE AND PAVEMENT MARKINGS SEE SHEET 50.
 9. FOR WHEELCHAIR RAMP AND DRIVEWAY DETAILS SEE SHEETS 60 AND 61.



Richard A. Azzalina
7/26/17

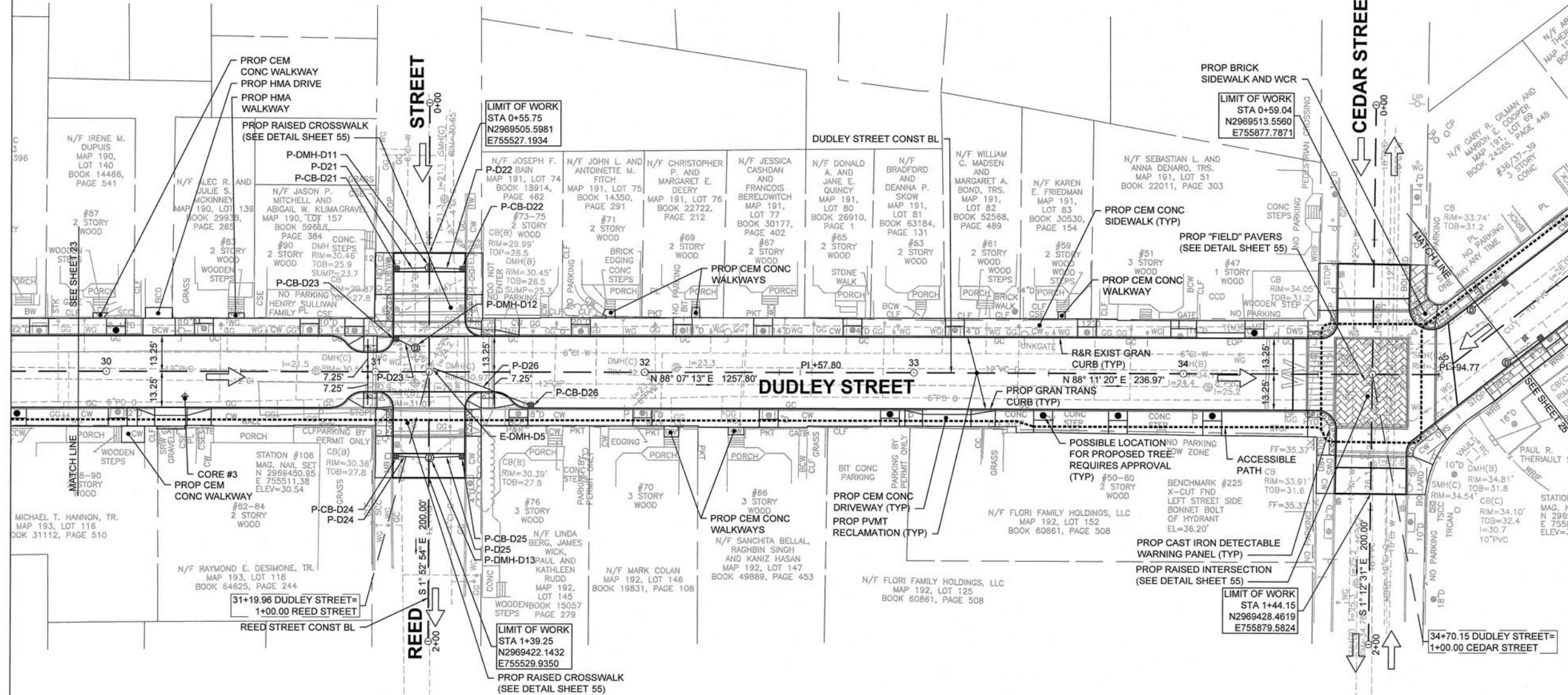


- NOTES:
- ALL EXISTING DRAINAGE, SANITARY, WATER AND ANY OTHER MUNICIPAL UTILITY CASTING SHALL BE ADJUSTED TO GRADE BY THE CONTRACTOR.
 - ALL EXISTING PRIVATE UTILITY (GAS, ELECTRIC, COMMUNICATIONS, ETC.) CASTINGS SHALL BE ADJUSTED TO GRADE BY THEIR RESPECTIVE UTILITY COMPANY. THE CONTRACTOR SHALL COORDINATE WORK WITH PRIVATE UTILITY COMPANIES.
 - ALL UTILITY POLES SHALL BE RETAINED.
 - ALL EXISTING TREES SHALL BE RETAINED AND PROTECTED DURING CONSTRUCTION UNLESS OTHERWISE NOTED.
 - FOR CURB GEOMETRY AND BASELINE TIES SEE SHEET 36.
 - FOR PROPOSED GRADING SEE SHEET 43.
 - FOR DRAINAGE STRUCTURE AND PIPE TABLES SEE SHEET 46.
 - FOR SIGNAGE AND PAVEMENT MARKINGS SEE SHEET 51.
 - FOR WHEELCHAIR RAMP AND DRIVEWAY DETAILS SEE SHEETS 60 AND 61.

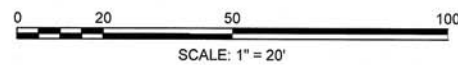


Richard A. Azzolina
 7/26/17





- NOTES:
1. ALL EXISTING DRAINAGE, SANITARY, WATER AND ANY OTHER MUNICIPAL UTILITY CASTING SHALL BE ADJUSTED TO GRADE BY THE CONTRACTOR.
 2. ALL EXISTING PRIVATE UTILITY (GAS, ELECTRIC, COMMUNICATIONS, ETC.) CASTINGS SHALL BE ADJUSTED TO GRADE BY THEIR RESPECTIVE UTILITY COMPANY. THE CONTRACTOR SHALL COORDINATE WORK WITH PRIVATE UTILITY COMPANIES.
 3. ALL UTILITY POLES SHALL BE RETAINED.
 4. ALL EXISTING TREES SHALL BE RETAINED AND PROTECTED DURING CONSTRUCTION UNLESS OTHERWISE NOTED.
 5. FOR CURB GEOMETRY AND BASELINE TIES SEE SHEET 37.
 6. FOR PROPOSED GRADING SEE SHEET 44.
 7. FOR DRAINAGE STRUCTURE AND PIPE TABLES SEE SHEET 46.
 8. FOR SIGNAGE AND PAVEMENT MARKINGS SEE SHEET 52.
 9. FOR WHEELCHAIR RAMP AND DRIVEWAY DETAILS SEE SHEETS 60 AND 61.



Richard A. Azzalina
7/26/17



Client/Project
Cambridge Department of Public Works

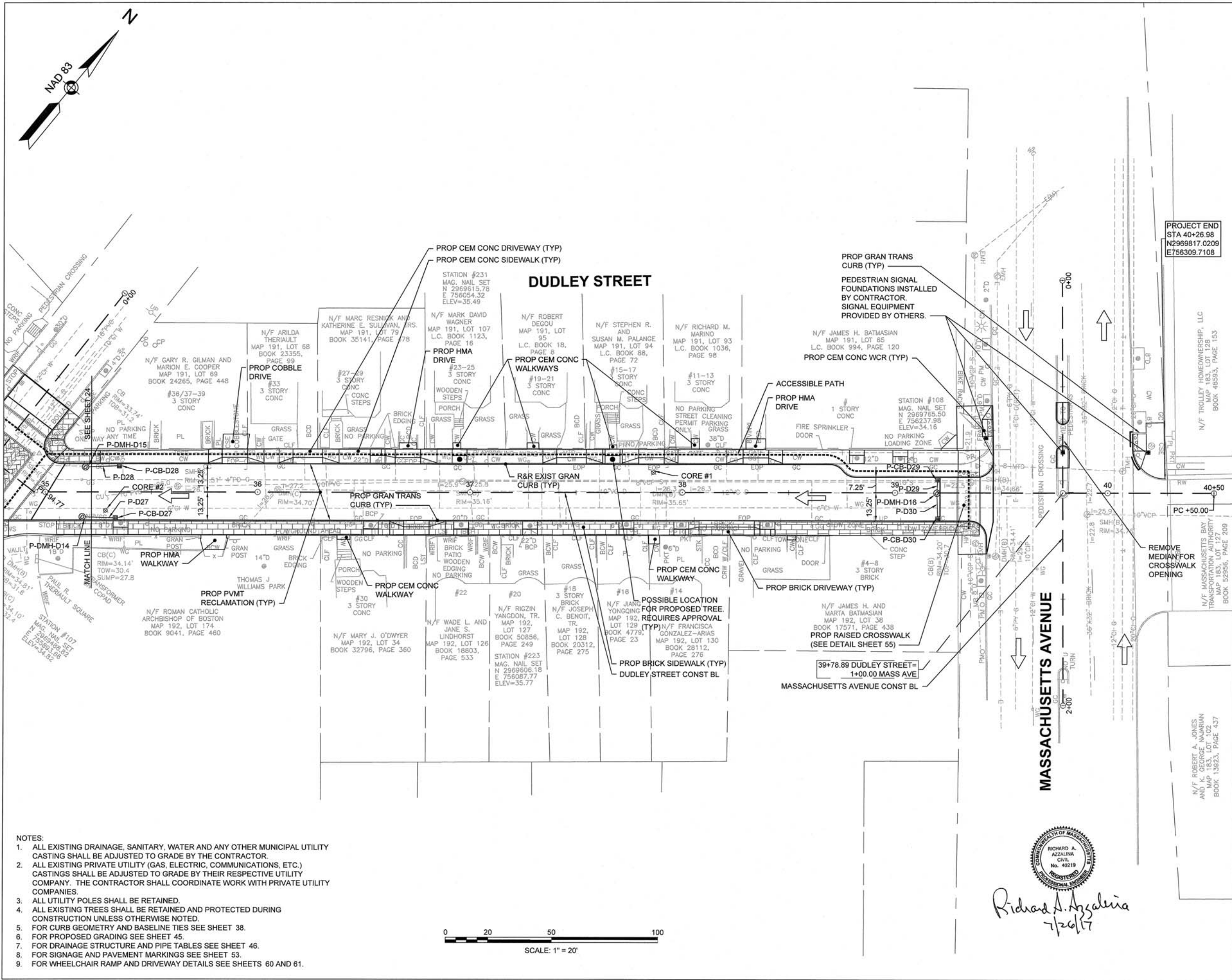
Chapter 90 Contract 22
Healey St., Parker St. & Dudley St.
Cambridge, MA

Title
DUDLEY STREET
CONSTRUCTION PLAN
PART 3 OF 4

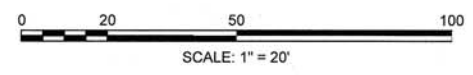
Project No. 179410352
Scale 1" = 20'

Drawing No. 24
Sheet 24
Revision 61

PROJECT END
STA 40+26.98
N2969817.0209
E756309.7108



- NOTES:**
- ALL EXISTING DRAINAGE, SANITARY, WATER AND ANY OTHER MUNICIPAL UTILITY CASTING SHALL BE ADJUSTED TO GRADE BY THE CONTRACTOR.
 - ALL EXISTING PRIVATE UTILITY (GAS, ELECTRIC, COMMUNICATIONS, ETC.) CASTINGS SHALL BE ADJUSTED TO GRADE BY THEIR RESPECTIVE UTILITY COMPANY. THE CONTRACTOR SHALL COORDINATE WORK WITH PRIVATE UTILITY COMPANIES.
 - ALL UTILITY POLES SHALL BE RETAINED.
 - ALL EXISTING TREES SHALL BE RETAINED AND PROTECTED DURING CONSTRUCTION UNLESS OTHERWISE NOTED.
 - FOR CURB GEOMETRY AND BASELINE TIES SEE SHEET 38.
 - FOR PROPOSED GRADING SEE SHEET 45.
 - FOR DRAINAGE STRUCTURE AND PIPE TABLES SEE SHEET 46.
 - FOR SIGNAGE AND PAVEMENT MARKINGS SEE SHEET 53.
 - FOR WHEELCHAIR RAMP AND DRIVEWAY DETAILS SEE SHEETS 60 AND 61.



Richard A. Azzalina
7/26/17

Revision	By	Appd.	Date
A	100% SUBMISSION	CSS	17.07.19
		RAA	YYMMDD

Permit/Seal	By	Appd.	Date
			16.05.05
			YYMMDD

Client/Project
Cambridge Department of Public Works

Chapter 90 Contract 22
Healey St., Parker St. & Dudley St.
Cambridge, MA

Title
DUDLEY STREET CONSTRUCTION PLAN PART 4 OF 4

Project No.	Scale	
179410352	1" = 20'	
Drawing No.	Sheet	Revision