

BENT STREET

SIXTH STREET

CHARLES STREET

HURLEY STREET

LIMIT OF WORK
MEET EXISTING (TYP)

PROP CEM
CONC SIDEWALK

PROP GRANITE CURB

PROP RAISED CROSSWALK

PROP GRANITE CURB

PROP CEM
CONC RAMP
(TYP.)

PROP CEM
CONC SIDEWALK

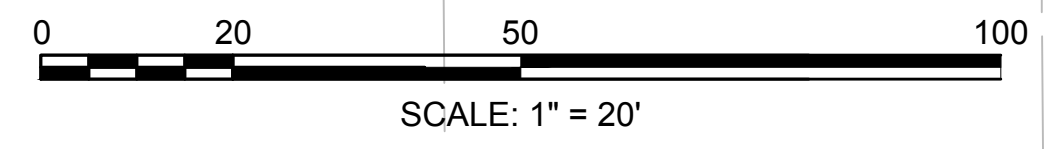
PROP GRANITE CURB

PROP CEM
CONC SIDEWALK

PROP CEM CONC
DRIVEWAY (TYP.)

PROP GRANITE CURB

PROP BRICK
WALK

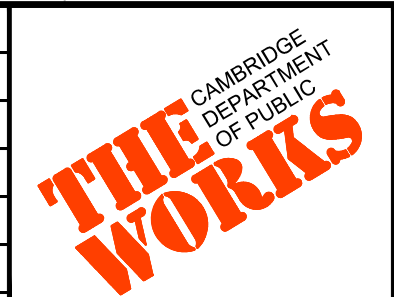


CONCEPT DESIGN
NOT FOR CONSTRUCTION

CAD FILE: I:\eng\16042-46 Cambridge Chapter 90 Contract 23\DDWG\Working\UR\6th St Linework.dwg LAYOUT: Layout1 PLOTTED: 6/12/2018 11:57 AM BY: banks, paul

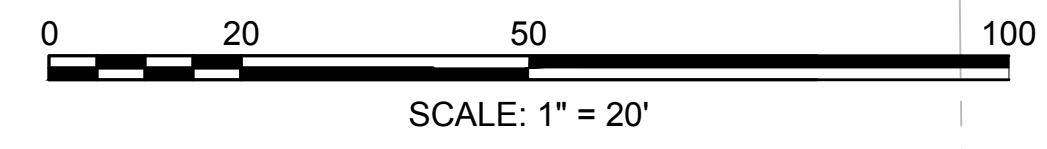
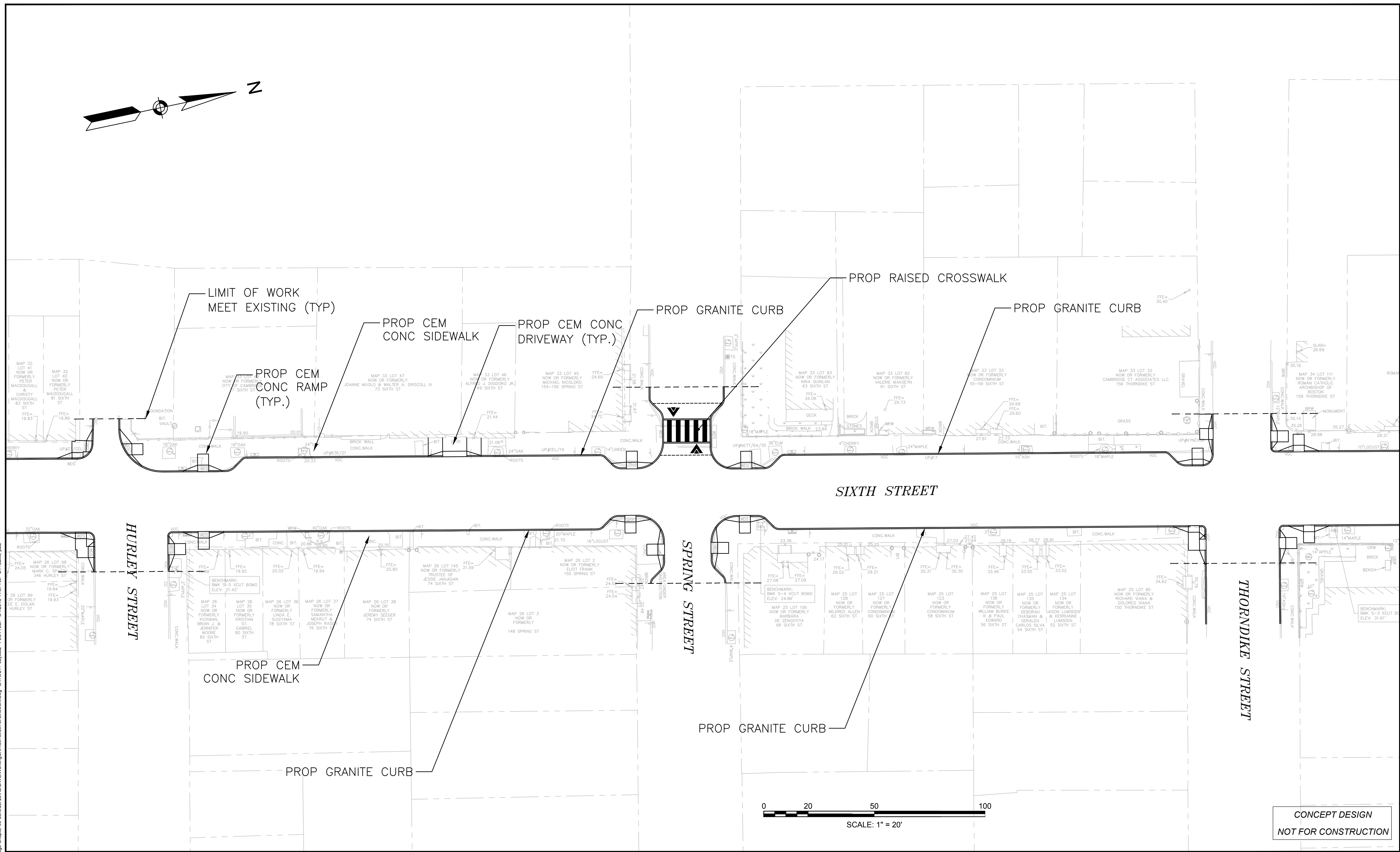
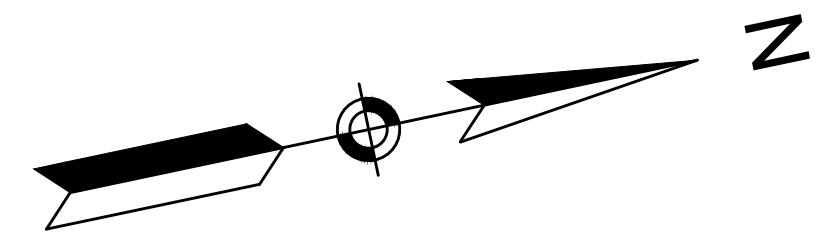


Scale	AS NOTED			
Date	JUNE 1, 2018			
Job No.	20170208.019A			
Designed by	JRH			
Drawn by	JRH			
Checked by	PFB	No.	Description	Date
Approved by	PFB		REVISIONS	



Client	CITY OF CAMBRIDGE, MASSACHUSETTS
Project	CHAPTER 90 CONTACT 23 ROADWAY IMPROVEMENT PROJECT
Drawing	6TH STREET SHEET 1 OF 3

Sheet	1
File No.	XXXX

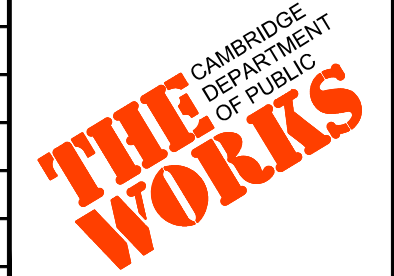


CONCEPT DESIGN
NOT FOR CONSTRUCTION

CAD FILE: I:\eng\18042_46\Cambridge\Chapter 90\Contract 23\HDD\Working\URH6th Sixth St Linework.dwg LAYOUT: Layout2 PLOTTED: 6/12/2018 11:57 AM BY: bmk: paul

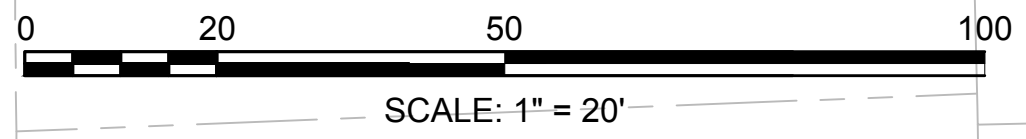
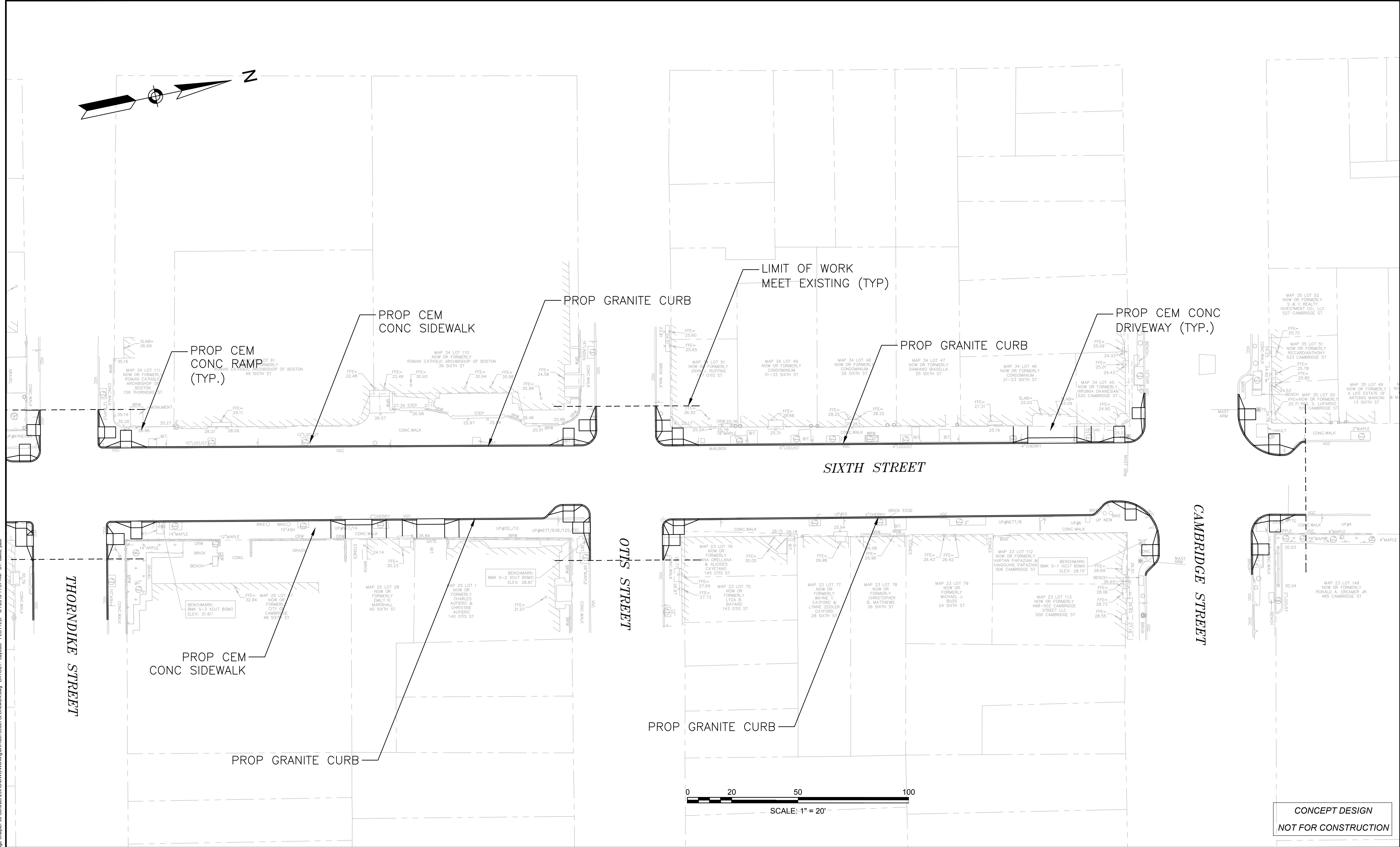
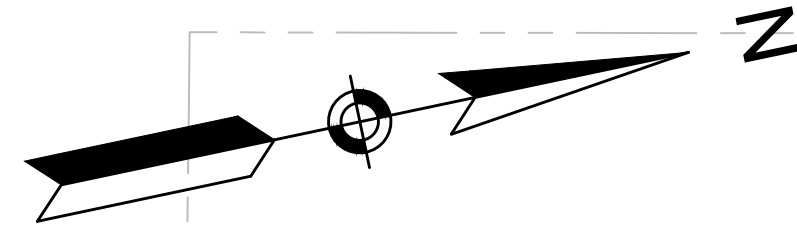


Scale	AS NOTED		
Date	JUNE 1, 2018		
Job No.	20170208.019A		
Designed by	JRH		
Drawn by	JRH		
Checked by	PFB	No.	Description
Approved by	PFB		Date
			REVISIONS



Client	CITY OF CAMBRIDGE, MASSACHUSETTS
Project	CHAPTER 90 CONTACT 23 ROADWAY IMPROVEMENT PROJECT
Drawing	6TH STREET SHEET 2 OF 3

Sheet	2
File No.	XXXX

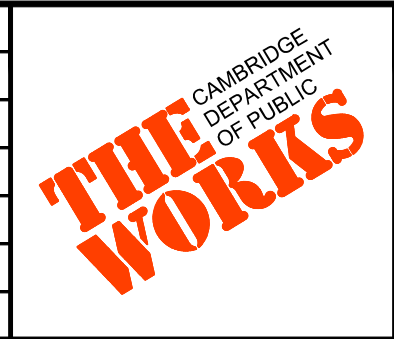


CONCEPT DESIGN
NOT FOR CONSTRUCTION

CAD FILE: I:\eng\16042-46 Cambridge Chapter 90 Contract 23\16042-46 Working\URR\6th St Linework.dwg LAYOUT: Layout3 6/1/2018 11:57 AM BY: babis, paul



Scale	AS NOTED		
Date	JUNE 1, 2018		
Job No.	20170208.019A		
Designed by	JRH		
Drawn by	JRH		
Checked by	PFB	No.	Description
Approved by	PFB		Date
			REVISIONS



Client	CITY OF CAMBRIDGE, MASSACHUSETTS
Project	CHAPTER 90 CONTACT 23 ROADWAY IMPROVEMENT PROJECT
Drawing	6TH STREET SHEET 3 OF 3

Sheet	3
File No.	XXXX