

**CAMBRIDGE CITY HALL ANNEX  
LANDSCAPE ACCESSIBILITY IMPROVEMENTS**

Cambridge, Massachusetts

**Community Meeting**

1 February 2018

**ARUP**

**GREGORY LOMBARDI DESIGN**

*Landscape Architecture*

**E-ICON**  
ARCHITECTURE

# Motivation

Improve the Entry and Landscape **Accessibility**  
to Benefit People with the  
**Broadest Range of Abilities**

## Additional Improvements . . .

Bike Parking

Stormwater Management

Wayfinding

Pedestrian Safety

Visual Clarity

# Site

Improve the Entry and Landscape **Accessibility**  
to Benefit People with the  
**Broadest Range of Abilities**



Wayfinding



Uneven Walking Surfaces



Stormwater Management



# Collaboration

Improve the Entry and Landscape **Accessibility**  
to Benefit People with the  
**Broadest Range of Abilities**

## **Stakeholders . . .**

Traffic, Parking and Transportation

Community Development

Arts Council

Municipal Facilities Improvement Plan (Capital Plan)

Cambridge Commission for Persons with Disabilities (CCPD)

Institute for Human Centered Design

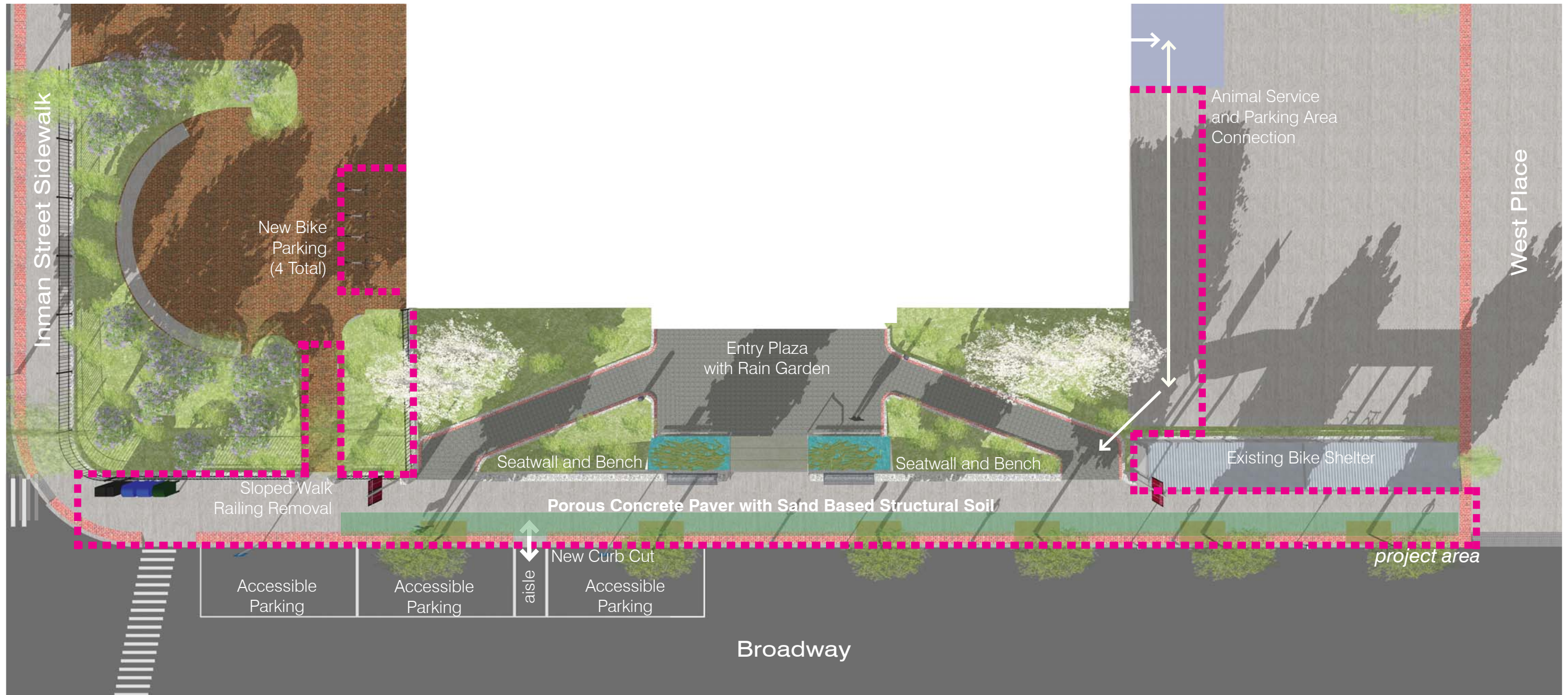
Neighbors and Abutters

Committee on Public Planting

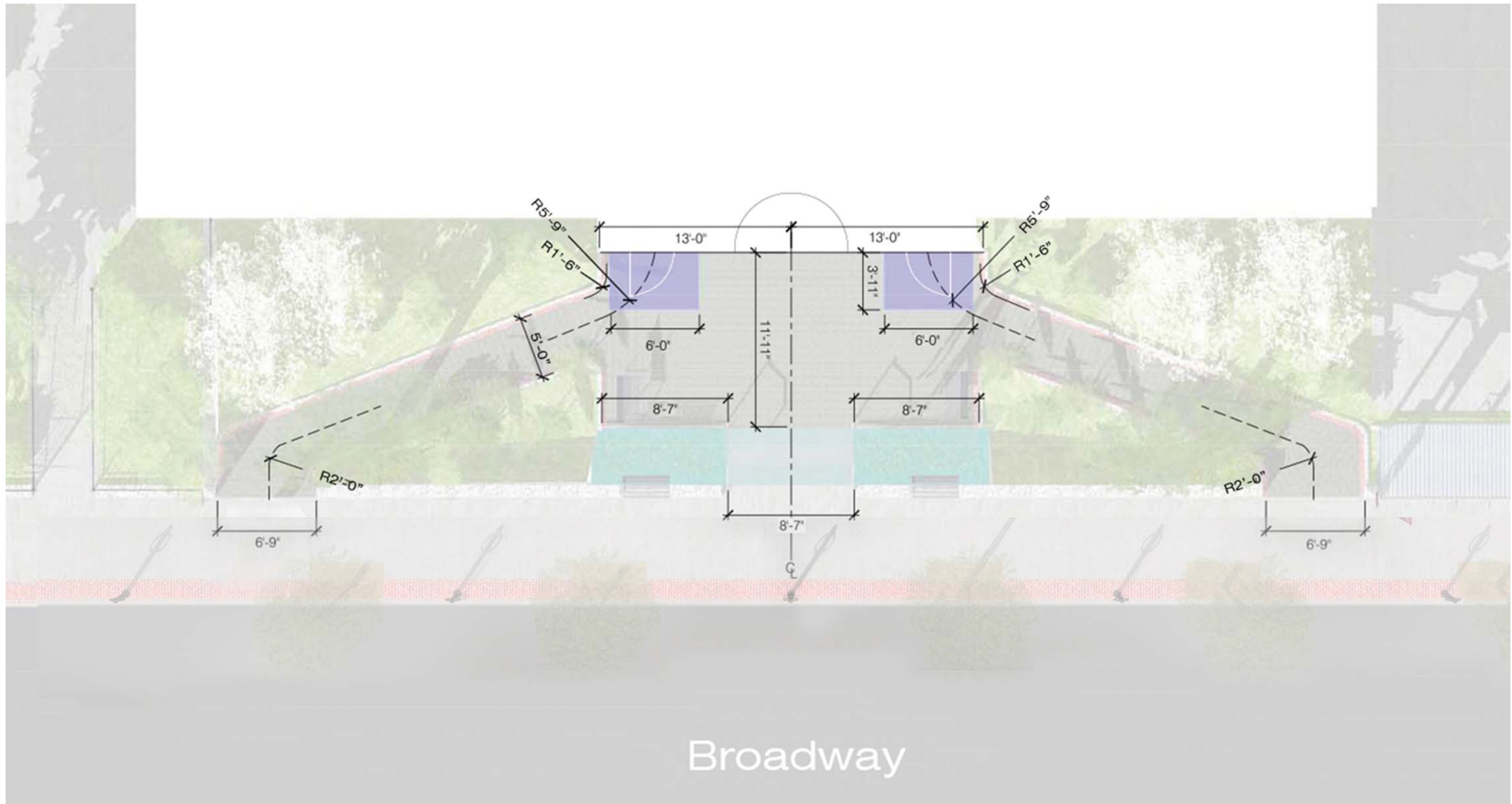
Mid-Cambridge Neighborhood District















GREGORY LOMBARDI DESIGN  
*Landscape Architecture*

**Elevation**  
Cambridge City Hall Annex





GREGORY LOMBARDI DESIGN  
*Landscape Architecture*

**Street View**  
Cambridge City Hall Annex

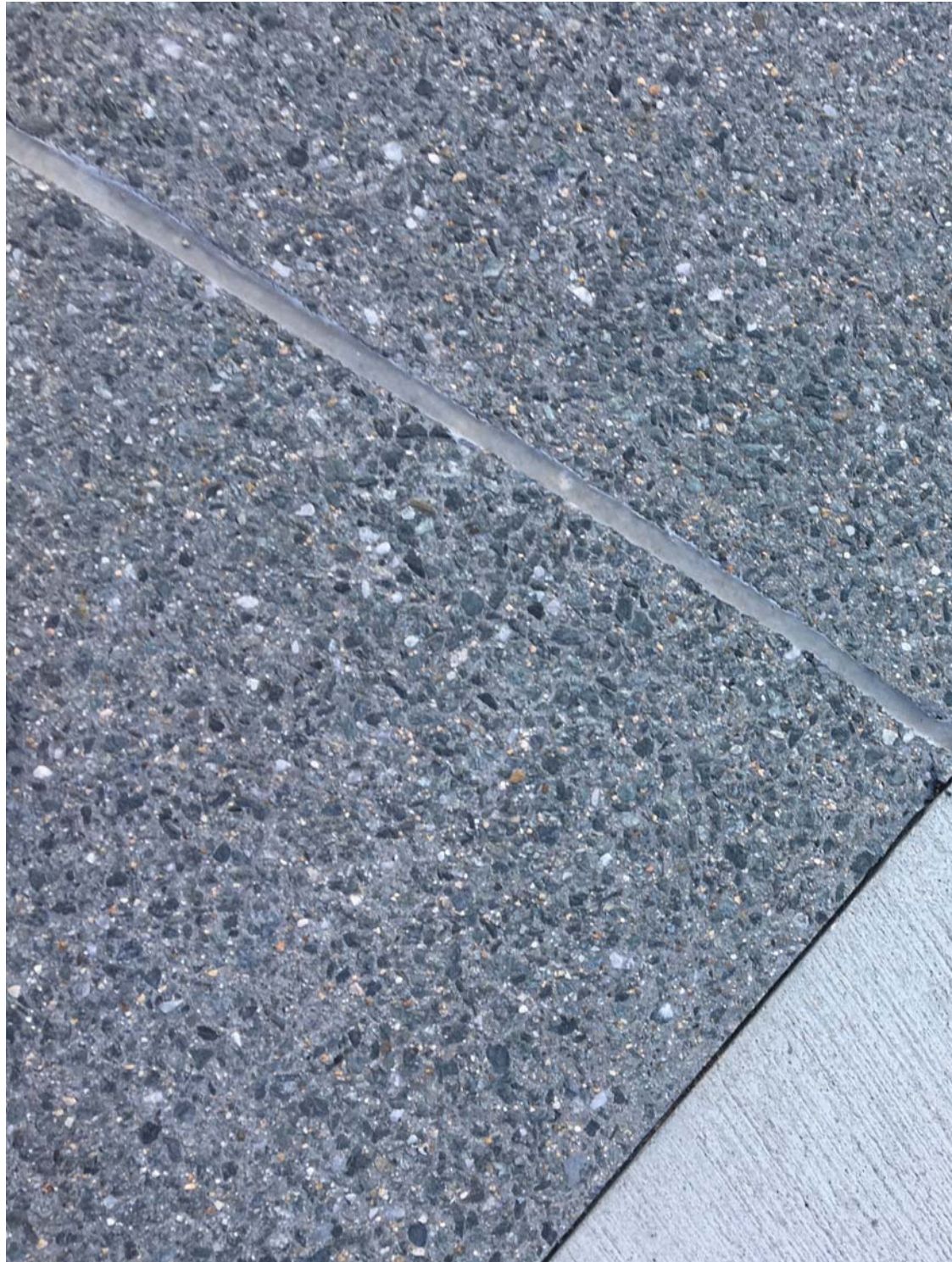




GREGORY LOMBARDI DESIGN  
*Landscape Architecture*

**Street View**  
Cambridge City Hall Annex





Exposed Aggregate Concrete



Proposed Granite  
(Exist. Building Foundation)

Eased/Radial Cheek Wall Edge Condition

*Cobble Units*



*Interlocked Units*



*Square Units*



Permeable Conc Paver  
(Sand-based Structural Soil)





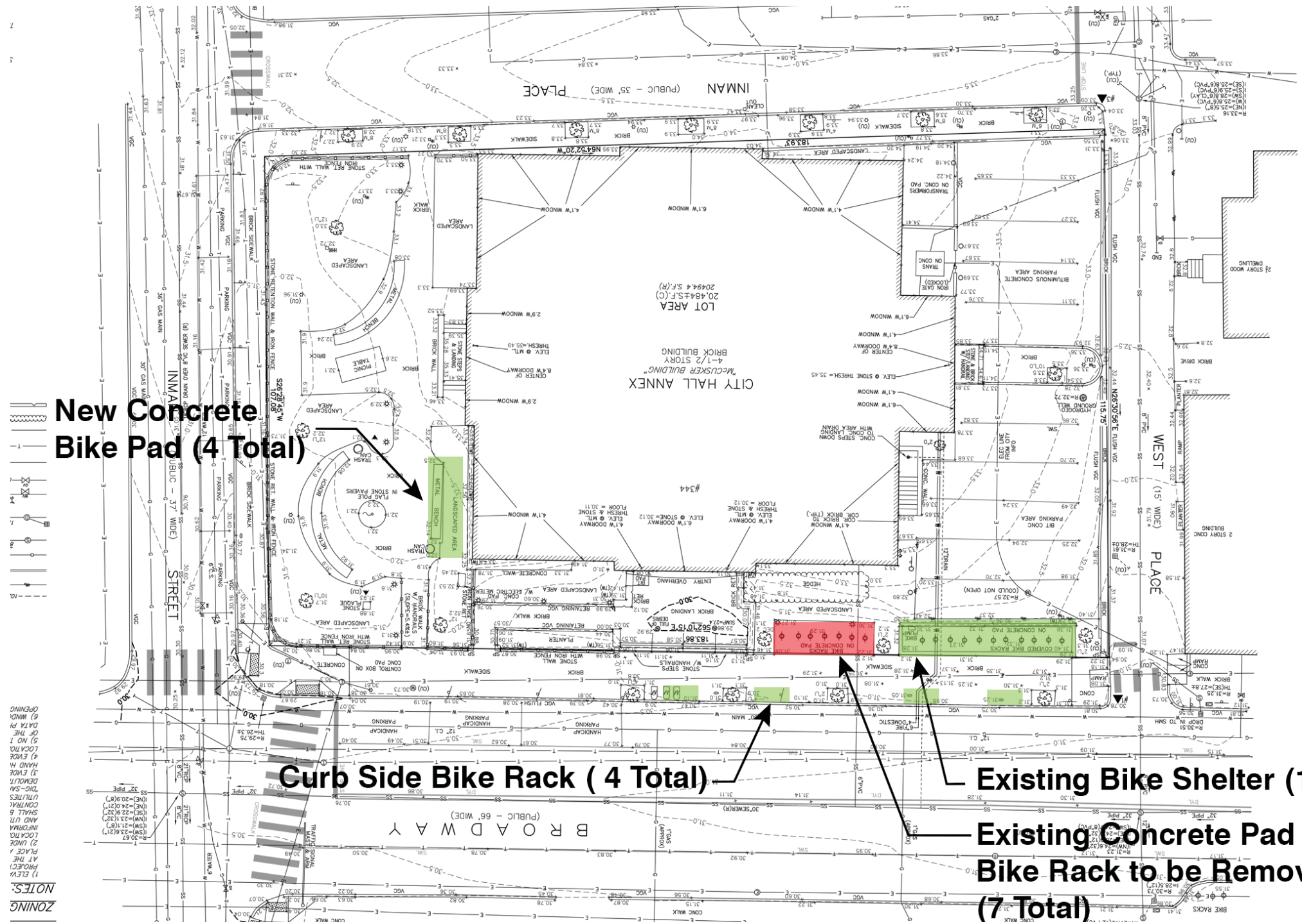
GREGORY LOMBARDI DESIGN  
*Landscape Architecture*

**Sloped Walk Entry View**  
Cambridge City Hall Annex









Existing Bike Rack

**Existing Bike Rack Distribution**

- Existing Bike Shelter - 11
- Existing Concrete Pad Bike Rack - 7
- Existing Total 18**

**New Bike Rack Distribution**

- Existing Bike Shelter (Broadway) - 11
- New Curb Side Racks (Broadway) - 4
- New Garden Bike Pad (Inman Place) - 4
- New Total 19**

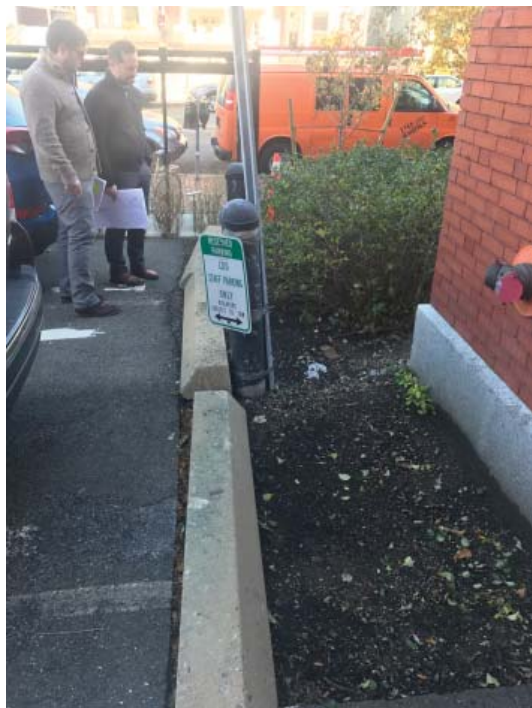




Plan View



View from Broadway



Existing Conditions - Future Walkway



Existing Stair - To Remain

**Design Opportunities:**

- (1) Additional Green Space in Parking Area (2' wide plant bed).
- (2) Pedestrian Circulation Connection from Parking and Animal Service Egress.
- (3) No Loss of Existing Parking





Remove Handrails  
and  
Associated Footings

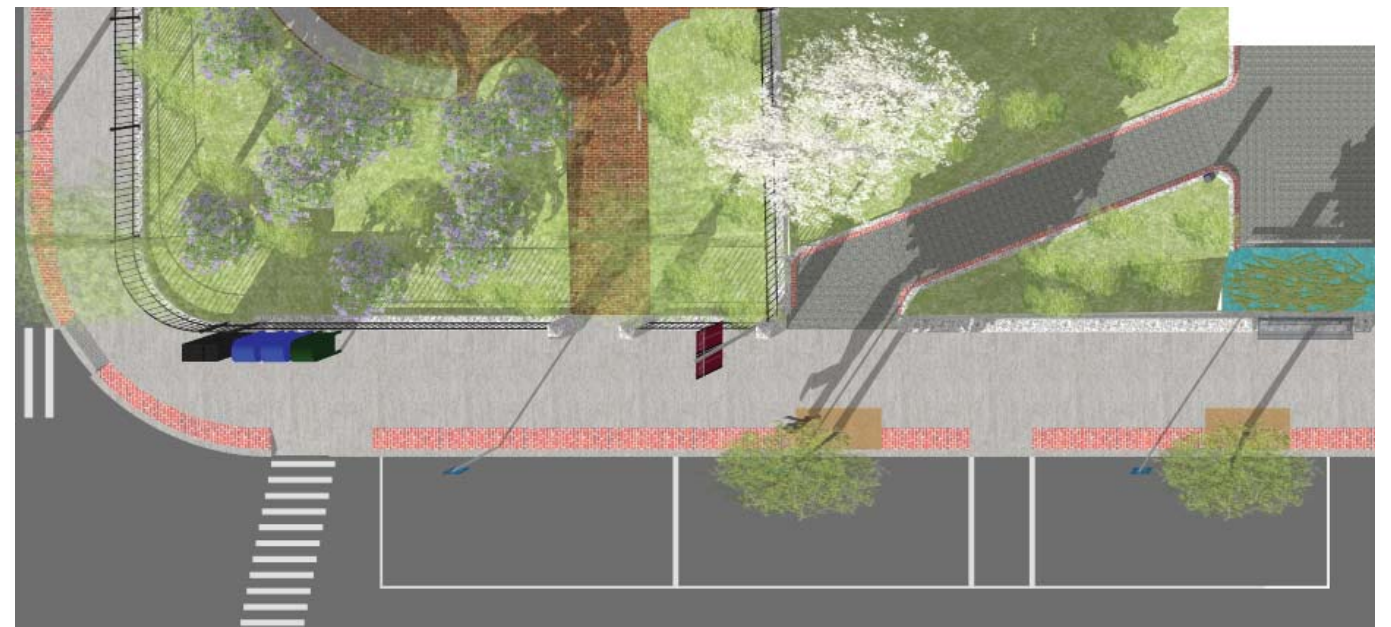
salvage pier #1

sawcut granite curb to  
accomodate new pier

salvage pier #2 (relocated)

attach fence panel to granite pier,  
both sides

Illustration of Proposed Garden Walk with Salvaged Piers



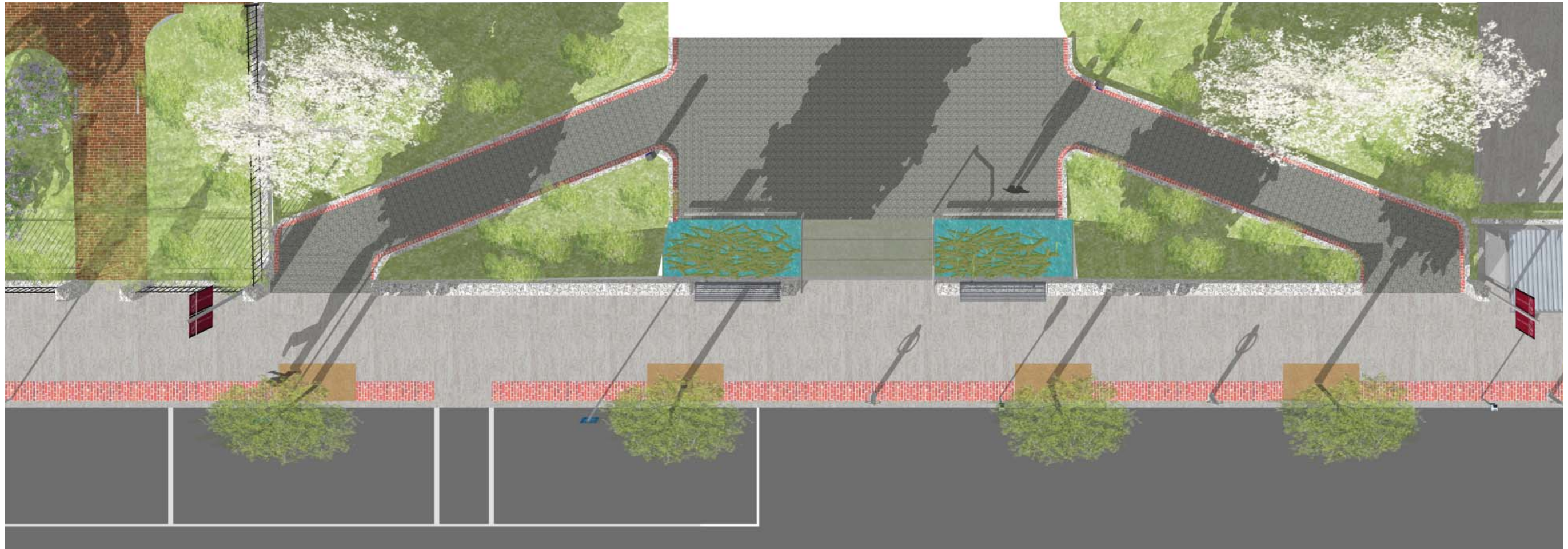
**Design Opportunities:**

- (1) Highlights the planting in the garden with the elimination of the fence and handrails
- (2) Maintains the exist sloped walk - slope does not exceed 5%.
- (3) Provides an additional 6-9" walkway width and an overall perceived width.



Existing Garden 'Ramp' with Handrails and Metal Posts





1. Concrete sidewalks with brick edging.
2. Improved wayfinding and building identification.
3. Equal accessibility from east and west.
4. ADA push pad bollards at entrances on either side of revolving door.
5. Improved entry walkway lighting.
6. Tactile surface changes and shorelining.
7. Improved plaza storm water drainage and snow melt.