

RUSSELL FIELD RENOVATION

COMMUNITY MEETING
RESERVOIR CHURCH
JANUARY 31ST, 2018

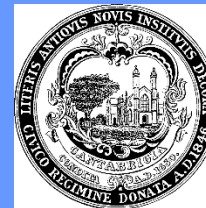
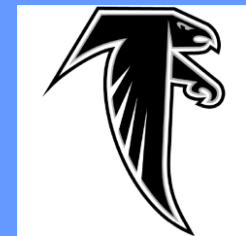
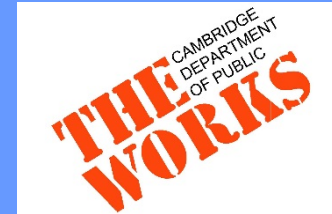


Agenda

- Presentation
 - Adam Corbeil; Recreation and Aquatics Director
 - Kara Falise; Senior Engineer with DPW
- Open Discussion

Project Partners

- Department of Public Works
- Department of Human Service Programs
- Cambridge Rindge and Latin School
- City Managers Office
- CDM Smith



Project Area



Project Area



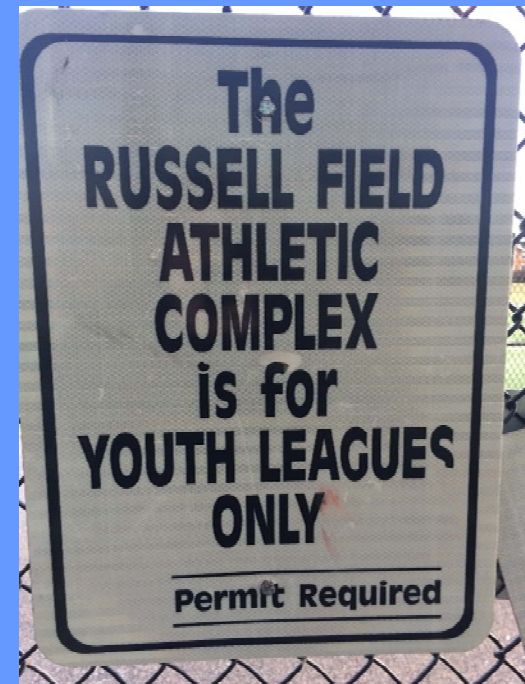
Russell Field: Users

Scheduled Activity Youth Facility:

- High and increasing demand City Wide

Frequent User Groups include:

- CRLS High School Athletics
- Cambridge Pop Warner and Flag Football
- Cambridge Youth Soccer



Russell Field: Existing Conditions

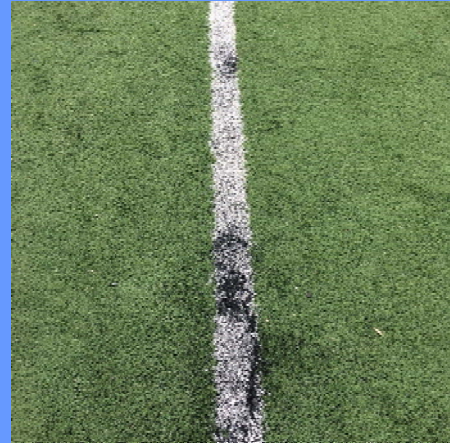
- Entire site renovated in 2007
 - Main Field: Infilled Synthetic Turf
 - Practice Field: Natural Grass
- Routine maintenance and some minor improvements and repairs since renovation



Russell Field: Existing Conditions

Main Field

- Turf surface at end of life
- Settling and grading issues
- Poor controls for Spectators
- Safety concerns with adjacent path network



Russell Field: Existing Conditions

Practice Field Area

- Poorly draining surface limits use
- Inconsistent surfacing
 - Difficult to maintain with use demands
- Health concerns with goose droppings
- Safety concerns related to adjacent field uses



Russell Field: Existing Conditions

Facility Conditions

- Paving in various stages of repair
- Poor condition and configuration of fencing and gates
- Lack of storage space
- Limited seating for larger events



Russell Field: Proposed Conditions

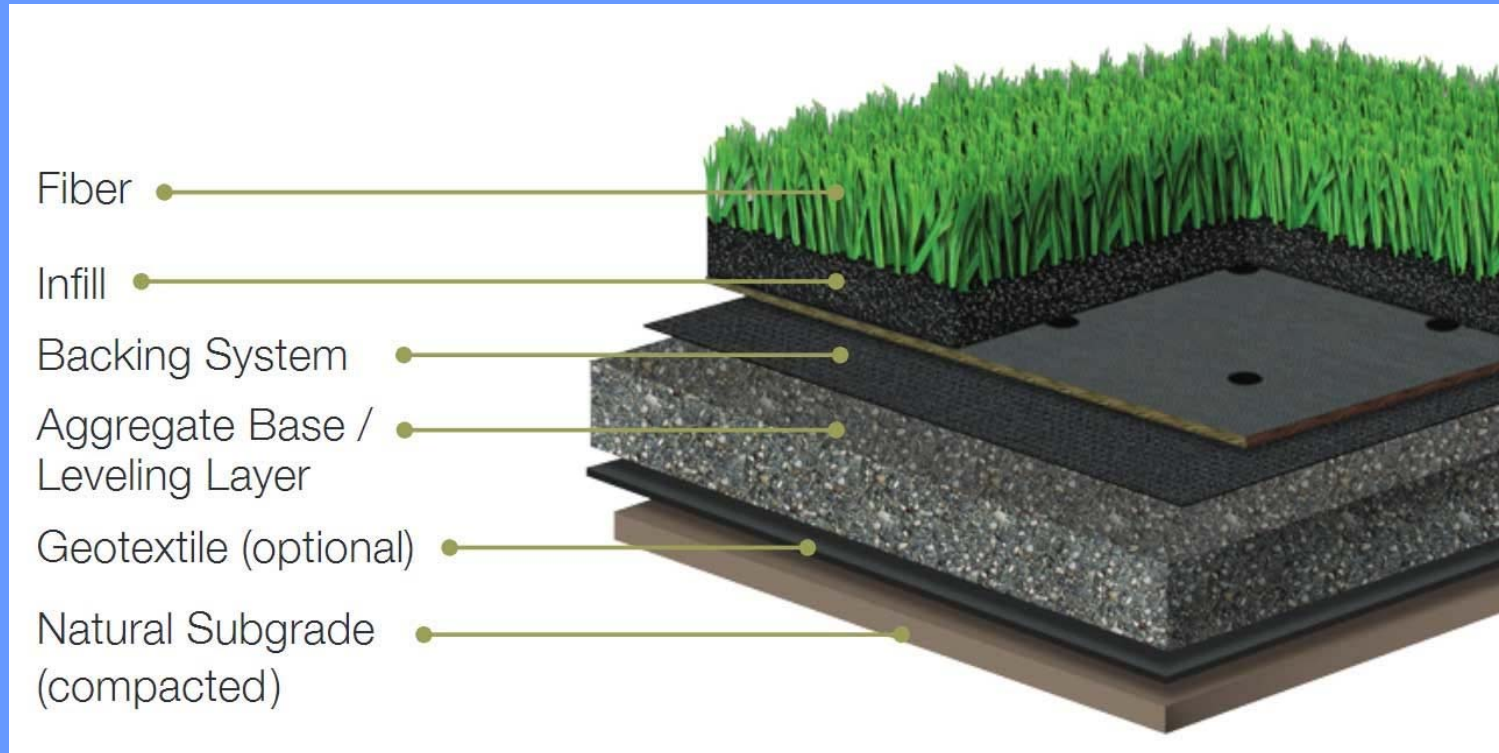
- Resurfacing both main field and practice field
- Fencing and athletic ball netting for improved safety and crowd controls
- Repairs and repaving of walkways adjacent to fields
- Tree plantings along shared used paths in project area vicinity
- Looking at opportunities for additional seating and storage

Russell Field: Proposed Conditions

THE CAMBRIDGE DEPARTMENT OF PUBLIC WORKS



Infilled Synthetic Turf: System



Proposed System: 2.5" fiber with Sand and Virgin EPDM Rubber Infill

Standard System Profile for Multi-use Youth Level Field

Infilled Synthetic Turf: Infill

- Proposed Infill Material: Sand and Virgin EPDM Rubber
 - Virgin Material manufactured for use in fields
 - Performs similar to SBR Rubber creating surface that tests (Gmax / Abrasion) acceptable and consistent for athletic use
 - Comes at a cost premium but reduces concerns



Infilled Synthetic Turf: Infill

- Health
 - Chemical Exposure
 - Sports Injuries
 - Heat Exposure
- Environment
 - Carbon Footprint
 - Water Consumption
 - Reuse / Recyclability
- Recreation Value
 - Hours of play available
 - Reliable Playability
- Cost
 - Installation & Replacement
 - Annual Maintenance
 - Total Cost Over 20 Years

	Petroleum Based					Sand	Plant Based			Living Grass
Infill Type	Post-Consumer Tire Crumb Rubber (SBR)	Post-Industrial Product Grinds	New Synthetic Crumb Rubber (EPDM)	New Plastic Crumb (TPE) Thermoplastic Elastomer	New Acrylic Polymer Coated Sand	Sand (Post-Industrial Application)	Coconut Fiber Over Sand	Coconut Fiber & Cork Mix	Cork	Grass Turf In Soil
Fields in PP&R Permit System	6	2								180
Infill Image										
Management Considerations										
Health										
Chemical Exposure	●	●	●	●	●	●	●	●	●	●
Sports Injuries	●	●	●	●	●	●	●	●	●	●
Heat Exposure	●	●	●	●	●	●	●	●	●	●
Environment										
Carbon Footprint	●	●	●	●	●	●	●	●	●	●
Water Consumption	●	●	●	●	●	●	●	●	●	●
Reuse / Recyclability	●	●	●	●	●	●	●	●	●	●
Recreation Value										
Hours of play available	●	●	●	●	●	●	●	●	●	●
Reliable Playability	●	●	●	●	●	●	●	●	●	●
Cost										
Installation & Replacement	●	●	●	●	●	●	●	●	●	●
Annual Maintenance	●	●	●	●	●	●	●	●	●	●
Total Cost Over 20 Years	●	●	●	●	●	●	●	●	●	●
Legend	<ul style="list-style-type: none"> ● Area of Concern ● Manageable Concern ● Manageable ● Manageable Benefit ● Area of Benefit 									
	Post Consumer Tire Crumb Rubber	Post Industrial Product Grinds	New Synthetic Crumb Rubber (EPDM)	New Plastic Crumb (TPE) Thermoplastic Elastomer	New Acrylic Polymer Coated Sand	Sand	Coconut Fiber over sand	Coconut Fiber & Cork Mix	Cork	Grass Turf In Soil

Comparison of Synthetic Turf Infill Materials
 Updated July 2016 This information will be monitored, reevaluated and updated periodically.



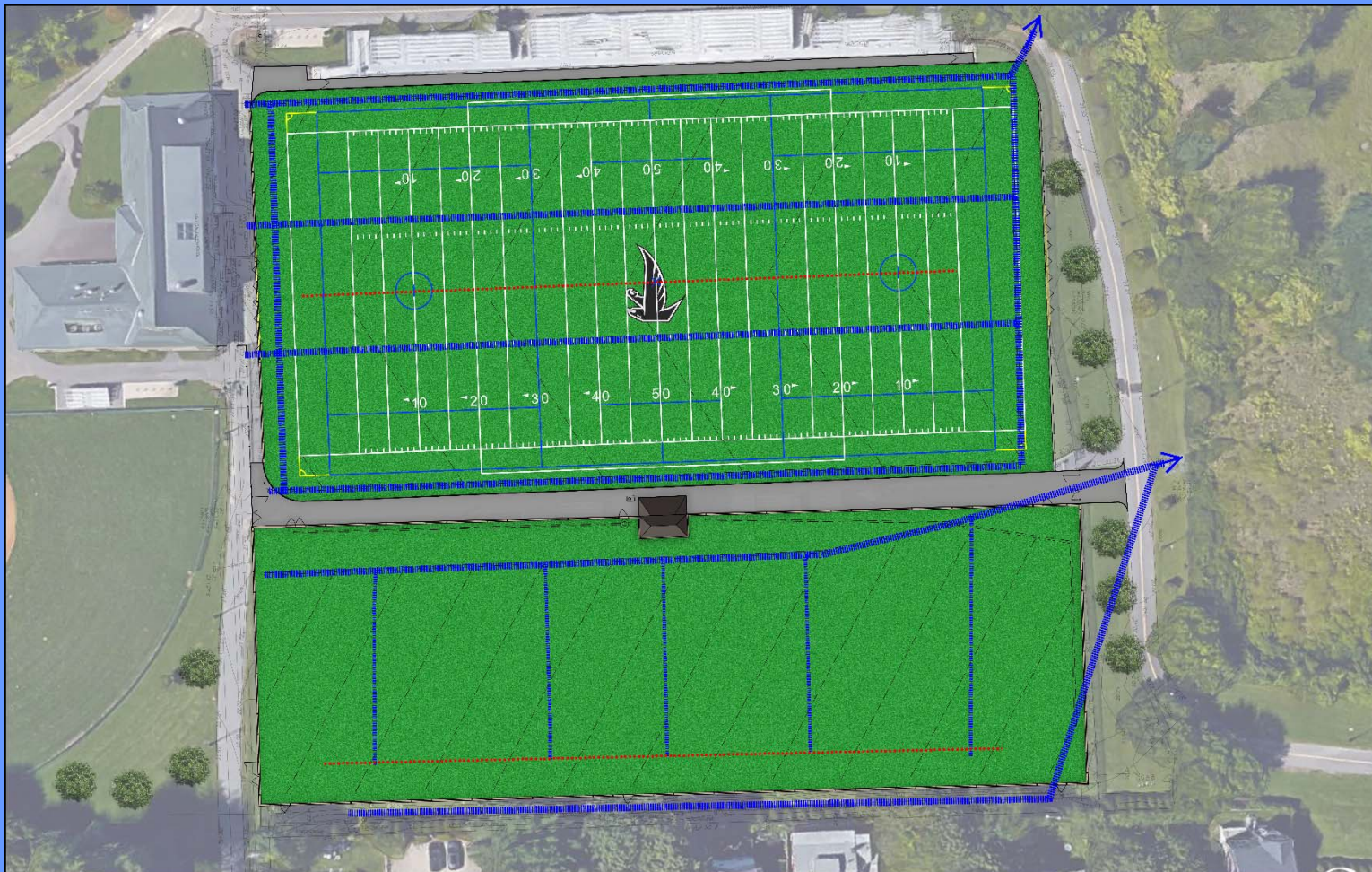
Practice Field: Why Turf?

- Provides consistent surface for players
 - Testing for GMAX and Abrasion
- Increased hours of play (no weather closures)
- Same surface as adjacent game field



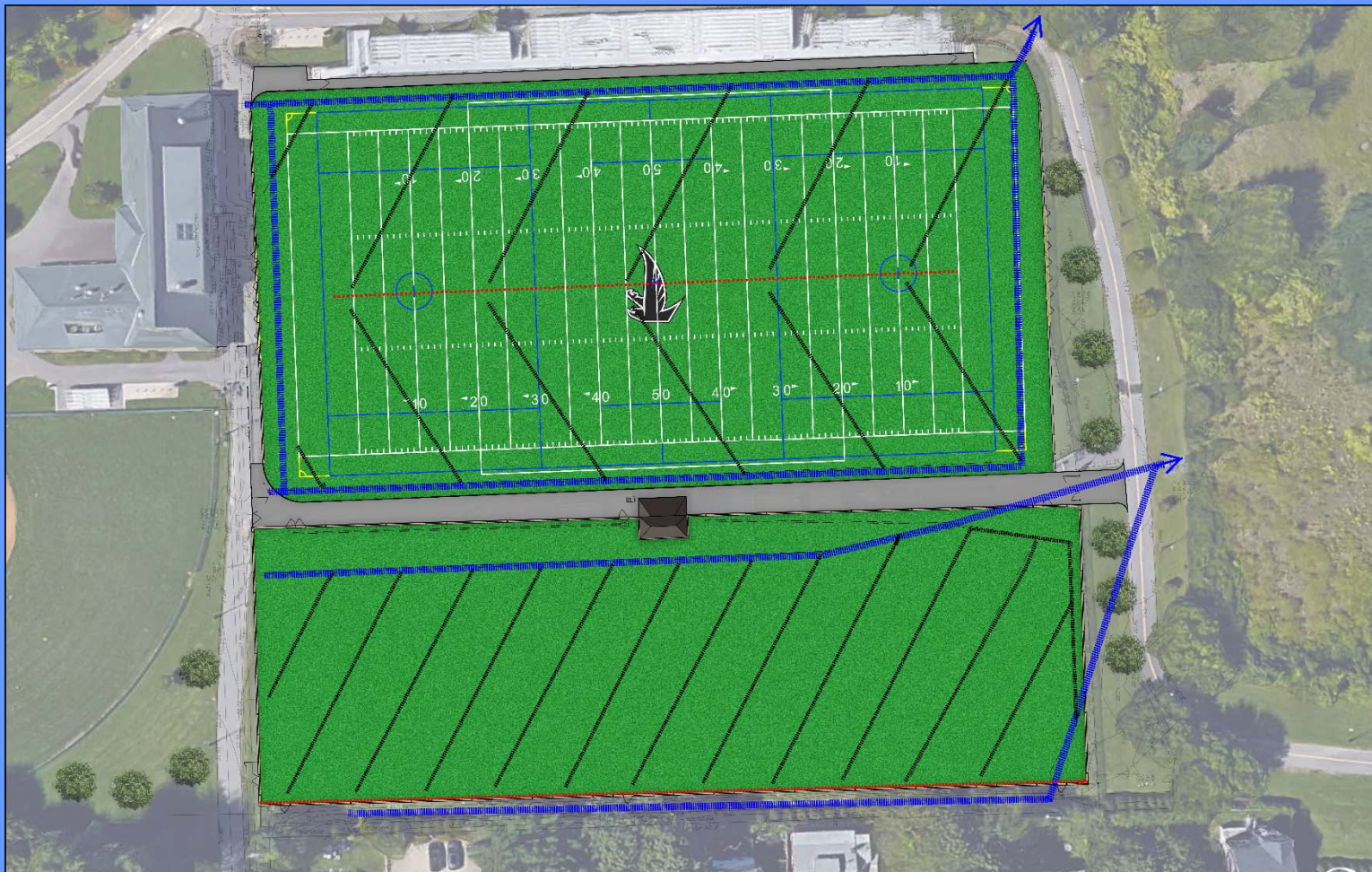
Russell Field: Utilities

Existing Drainage



Russell Field: Utilities

Proposed Drainage



Russell Field: Improvements

Project to include:

- Opportunities for Shade Tree Plantings
- Water connections for field watering/cleaning



Russell Field: Improvements

ATHLETIC BALL NETTING AND NEW FENCING



Russell Field Improvements

ACCOMMODATIONS FOR ADDITIONAL SEATING



Russell Field: Schedule

Project Bid: Late February 2018

Construction: April 2018- September 2018

Main Field Complete for Football Season Start
(Mid August 2018)

Russell Field: Proposed Conditions

THE WORKS
CAMBRIDGE
DEPARTMENT
OF PUBLIC



**CDM
Smith**

City of Cambridge
RUSSELL FIELD IMPROVEMENTS

JANUARY 31, 2018
Design Concept Not for Construction