

ALLSTON ST.

Entry Arbor

"Dry River Bed"

Service Access

Removeable Bollard

Hill Slide w/Stone Steps

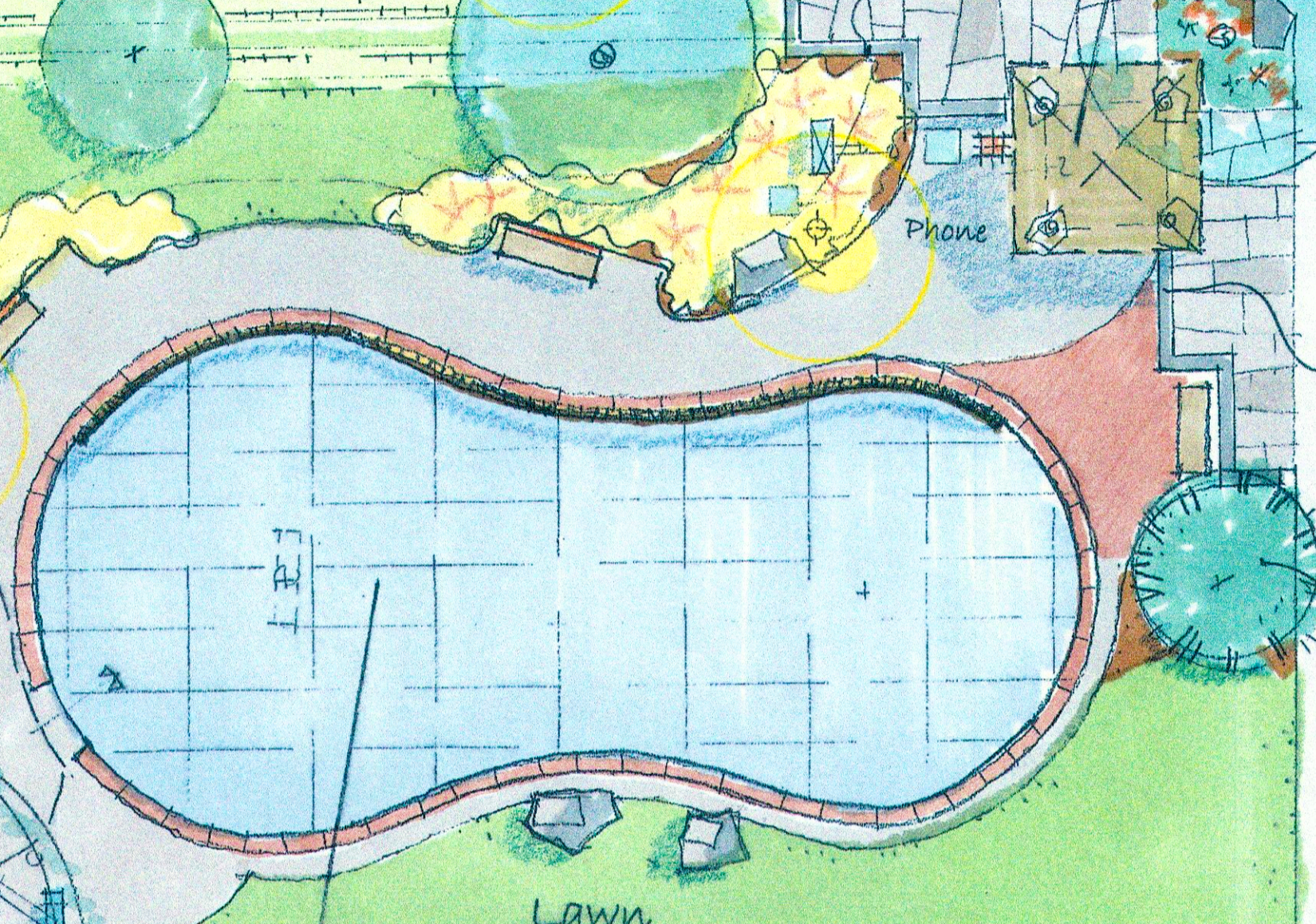
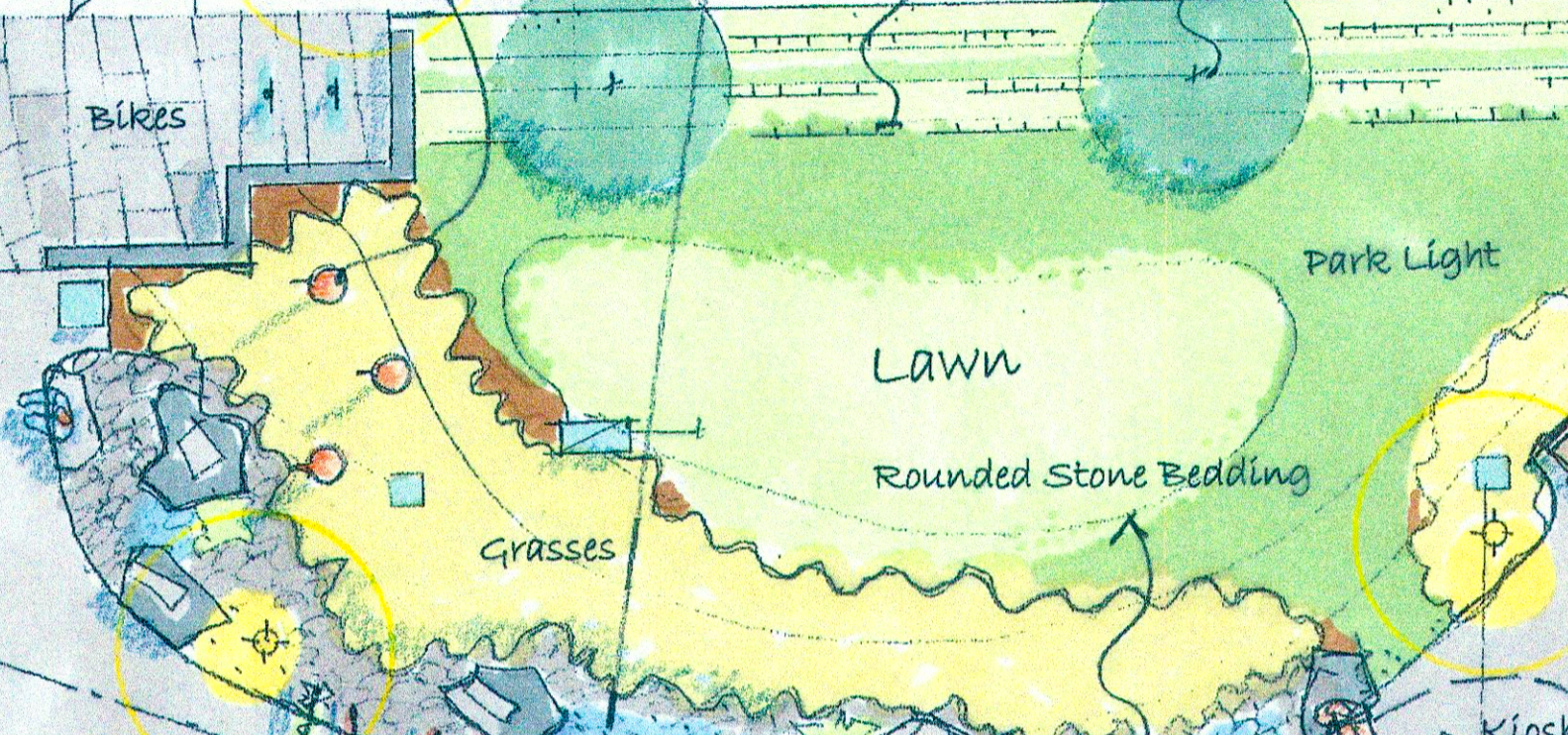
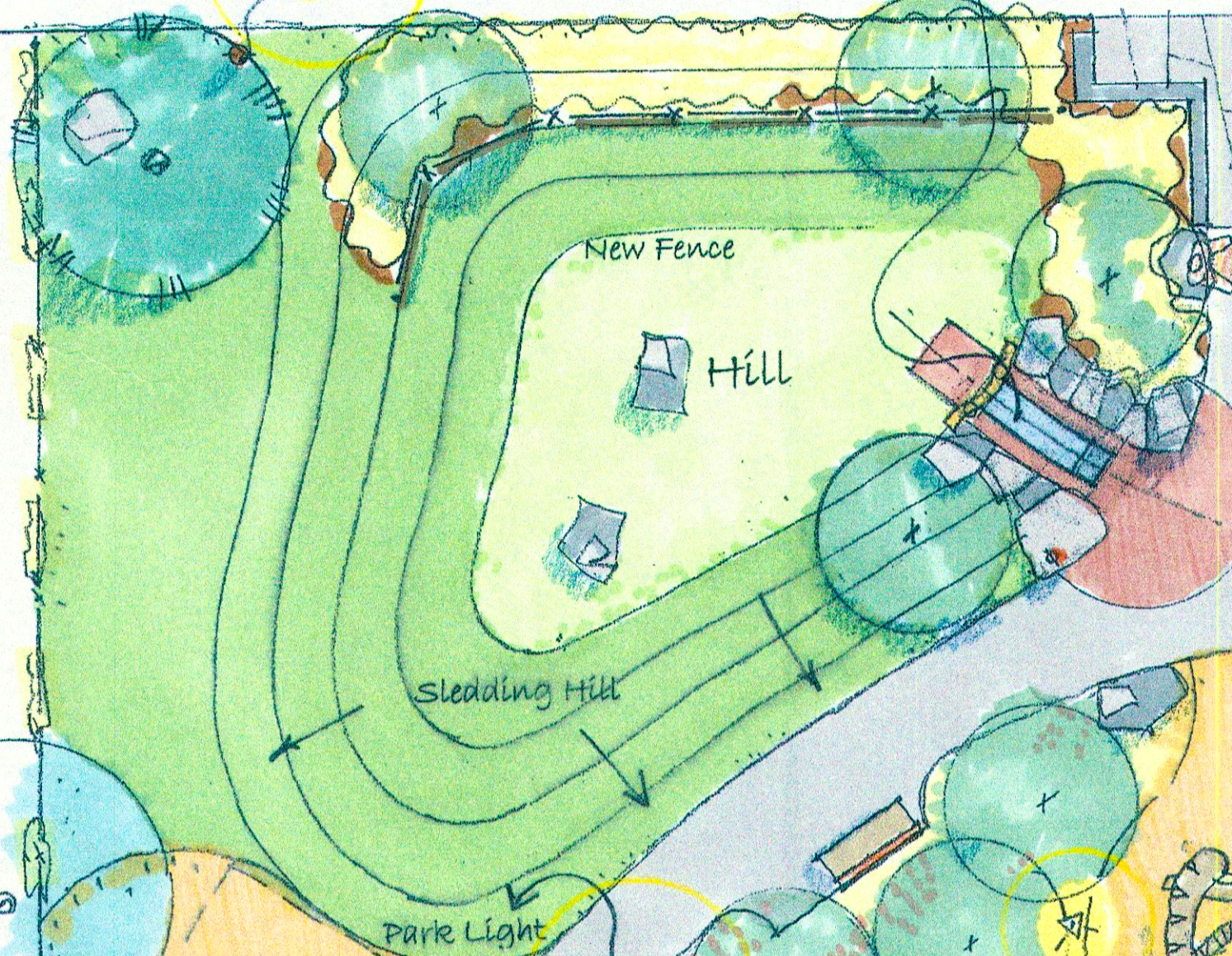
Carved Wooden Birds

Slope (Typ.)

Shade Trees

New Conc. S.W.

Stone Wall



Vines (Typ.)

Sledding Hill

Park Light

Grove of Trees

Kiosk

C.B.

Lawn

Bamboo Buffer

Swings

Table

Bollard Light (Typ.)

Bubbler

New Fence

Tree Climbing Structure & Play Hut/"Nest"

Community Space

Hard Surface Play/"Pond"

New Conc. S.W.

PLEASANT ST.

Walkway Arbor

PUTNAM AVE.

Alberico Park

Concept Plan

Cambridge Community Development Department 2012