

Harvard Square Design Project

An aerial photograph of Harvard Square in Cambridge, Massachusetts. The square is a large, open area with a circular traffic pattern. In the background, there are several historic brick buildings with multiple stories and many windows. One building on the right has the word "ALBIANI" visible above its entrance. In the foreground, there is a construction site with various materials, equipment, and workers. The overall scene is a mix of historic architecture and modern urban development.

City of Cambridge Community Development Department

In Association With:
TAMS Consultants, Inc.
Edwards & Kelcey, Inc.
Halvorson Design Partnership
Ripman Lighting Consultants

Community Meeting – November 21, 2002

AGENDA

- 1. *INTRODUCTIONS / PROJECT BACKGROUND***
- 2. *OPTIONS FOR CIRCULATION CHANGES***
- 3. *BREAK***
- 4. *SMALL GROUP DISCUSSIONS***
- 5. *REPORTING BACK***
- 6. *NEXT STEPS***

HARVARD SQUARE DESIGN COMMITTEE

- ***16 MEMBERS***
- ***BUSINESSES***
- ***RESIDENTS***
- ***INSTITUTIONS***
- ***HARVARD UNIVERSITY STUDENT***
- ***CITY STANDING COMMITTEES***

SCHEDULE

- ***COMMITTEE BEGAN MEETING IN APRIL 2002***
- ***DESIGN THROUGH SUMMER 2003***
- ***CONSTRUCTION (FIRST PHASE) FALL 2003 /
SPRING 2004***

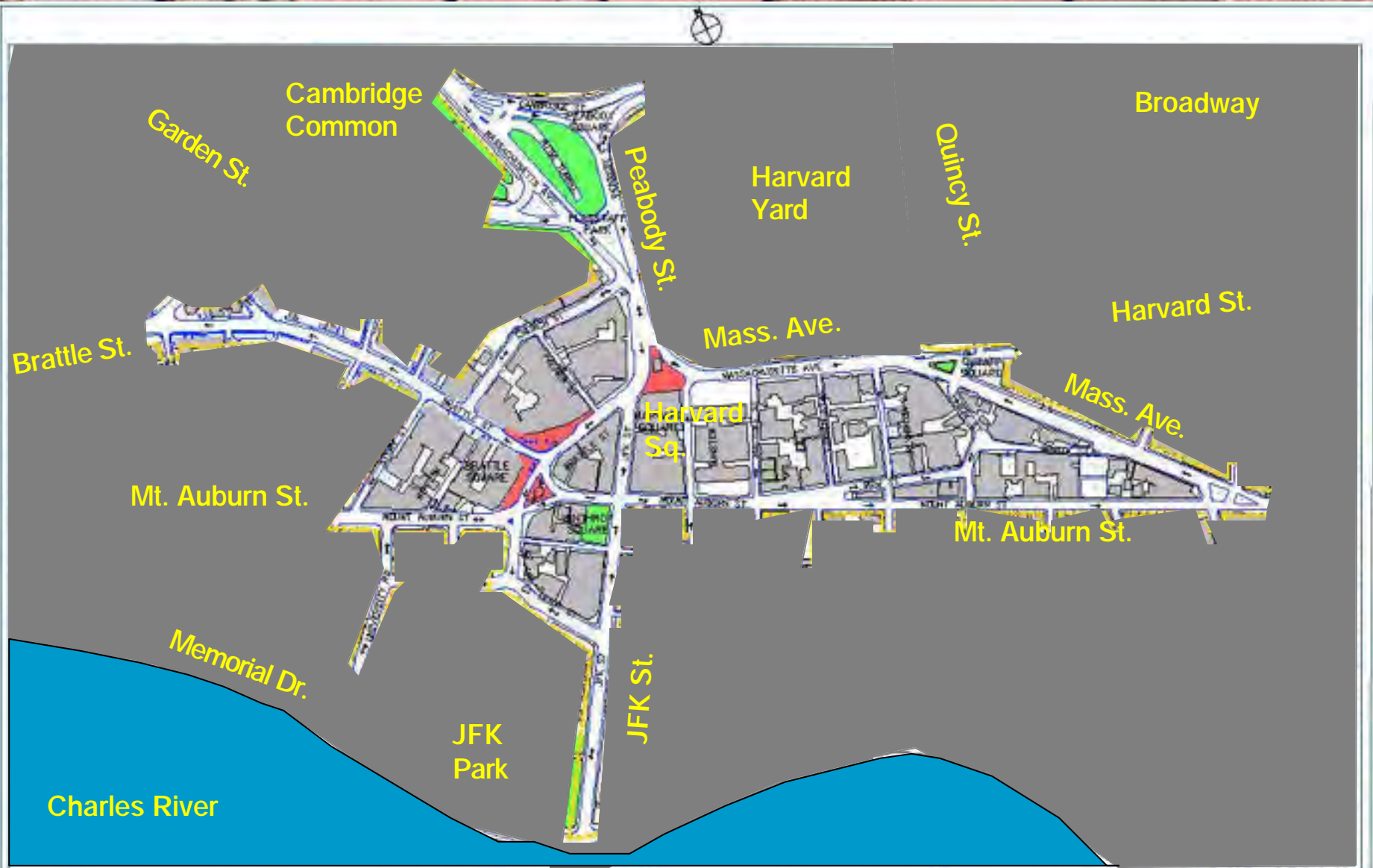
BASIC INFRASTRUCTURE IMPROVEMENTS



OPPORTUNITY: ENHANCE THE SQUARE FOR ALL USERS



PROJECT AREA



HARVARD SQUARE DESIGN PROJECT

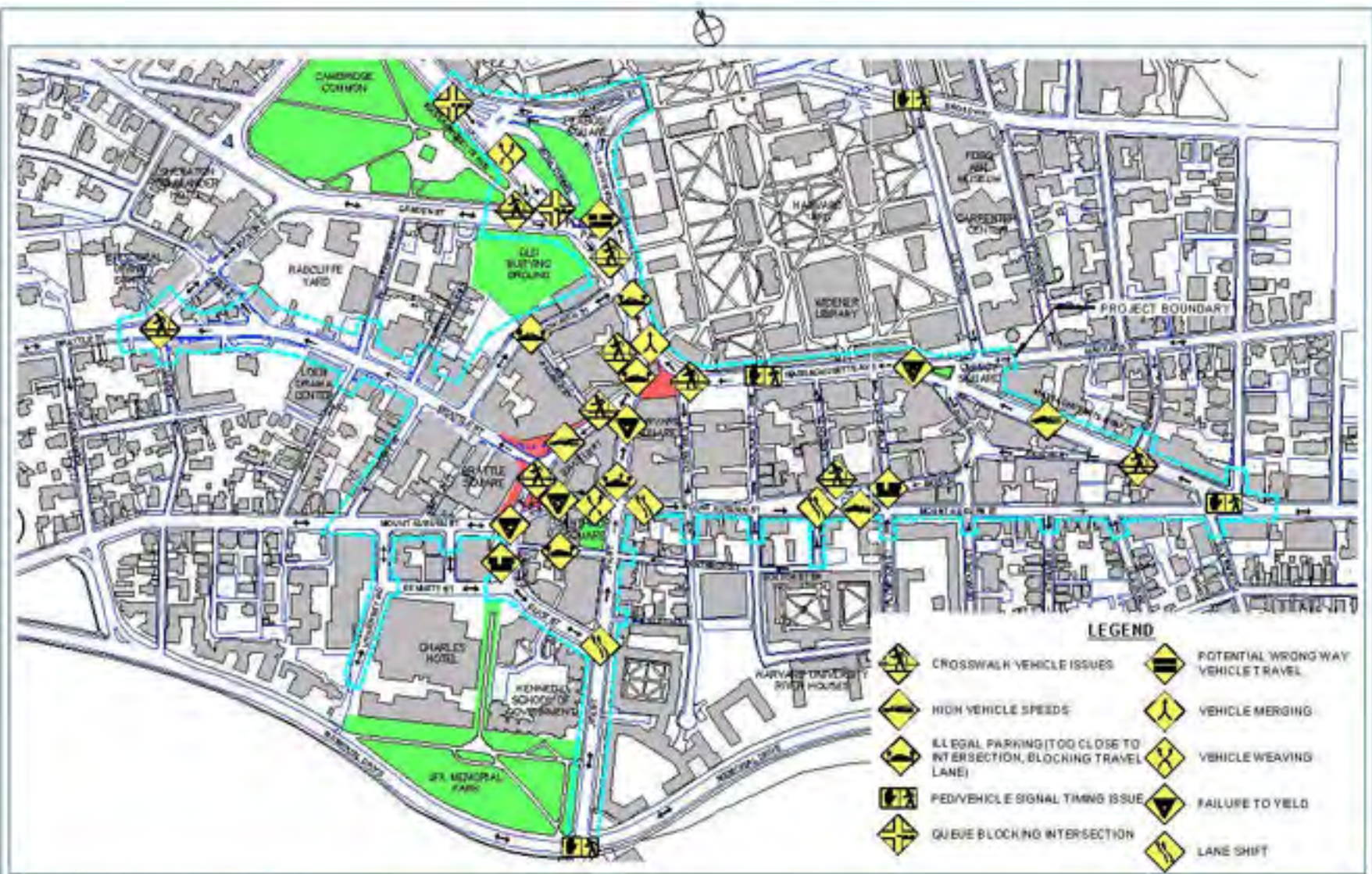
TAMS

City of Cambridge
June 26, 2002

SHORT-TERM IMPROVEMENTS

- ***BENCHES***
- ***LANDSCAPING***
- ***BIKE PARKING***
- ***LIGHTING***

EXISTING ISSUES



HARVARD SQUARE DESIGN PROJECT

TAMS

THE SHAWMUT GROUP

THE SHAWMUT GROUP
200 MAIN STREET, SUITE 200
BOSTON, MASSACHUSETTS 02111-1107

EXISTING ISSUES

0 50 100 200

City of Cambridge

WHY STUDY CIRCULATION ALTERNATIVES?

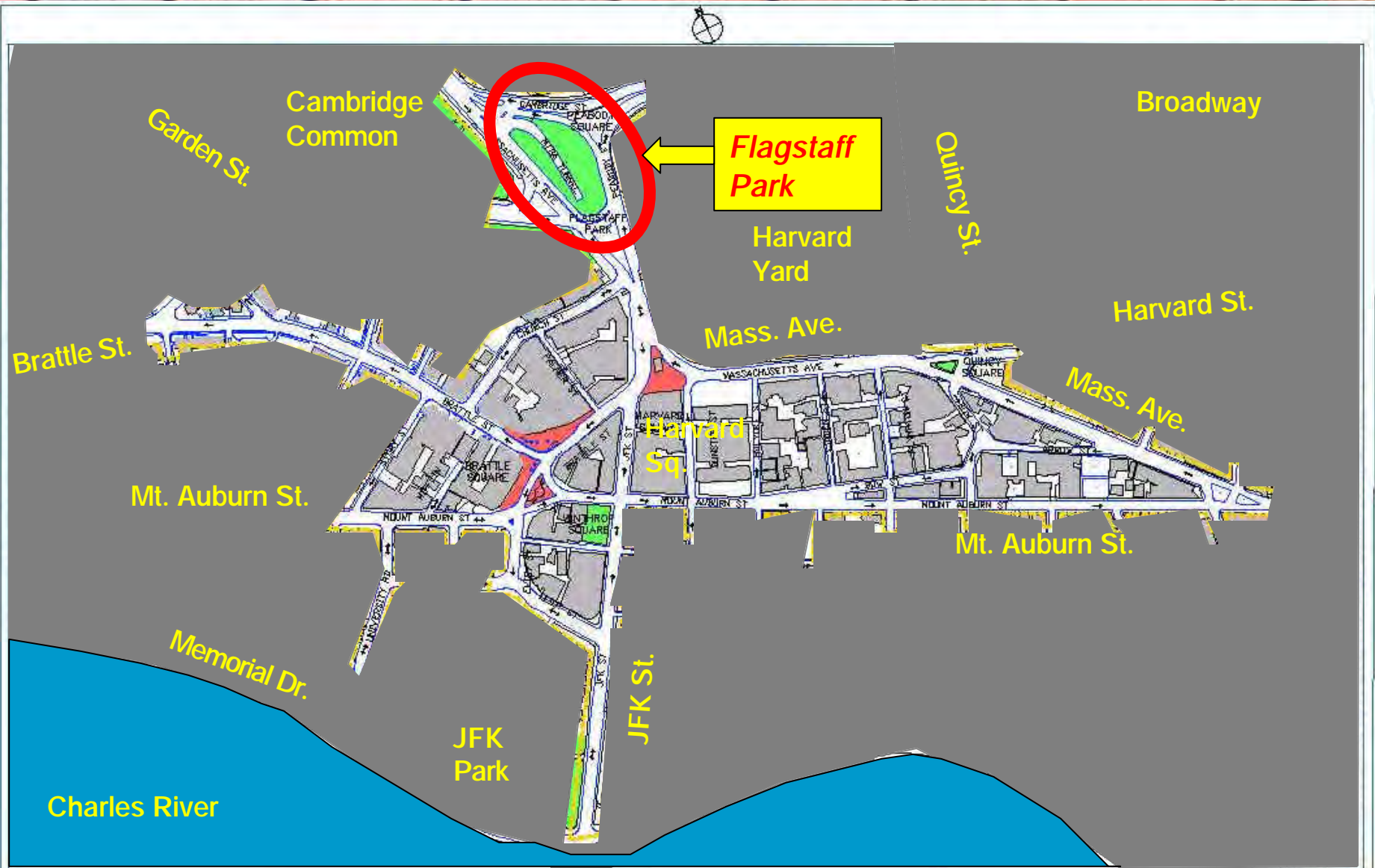
- ***Determine Minimum Number of Travel Lanes Needed***
 - ***Determine Street Directions***

- 
- ***Determine What to Do With Extra Space***

TRAFFIC ANALYSIS

- ***VOLUMES AND CIRCULATION***
- ***SIGNALS VS. STOP SIGNS***
- ***PEDESTRIANS, CYCLISTS AND MOTORISTS***

FLAGSTAFF PARK CONNECTION



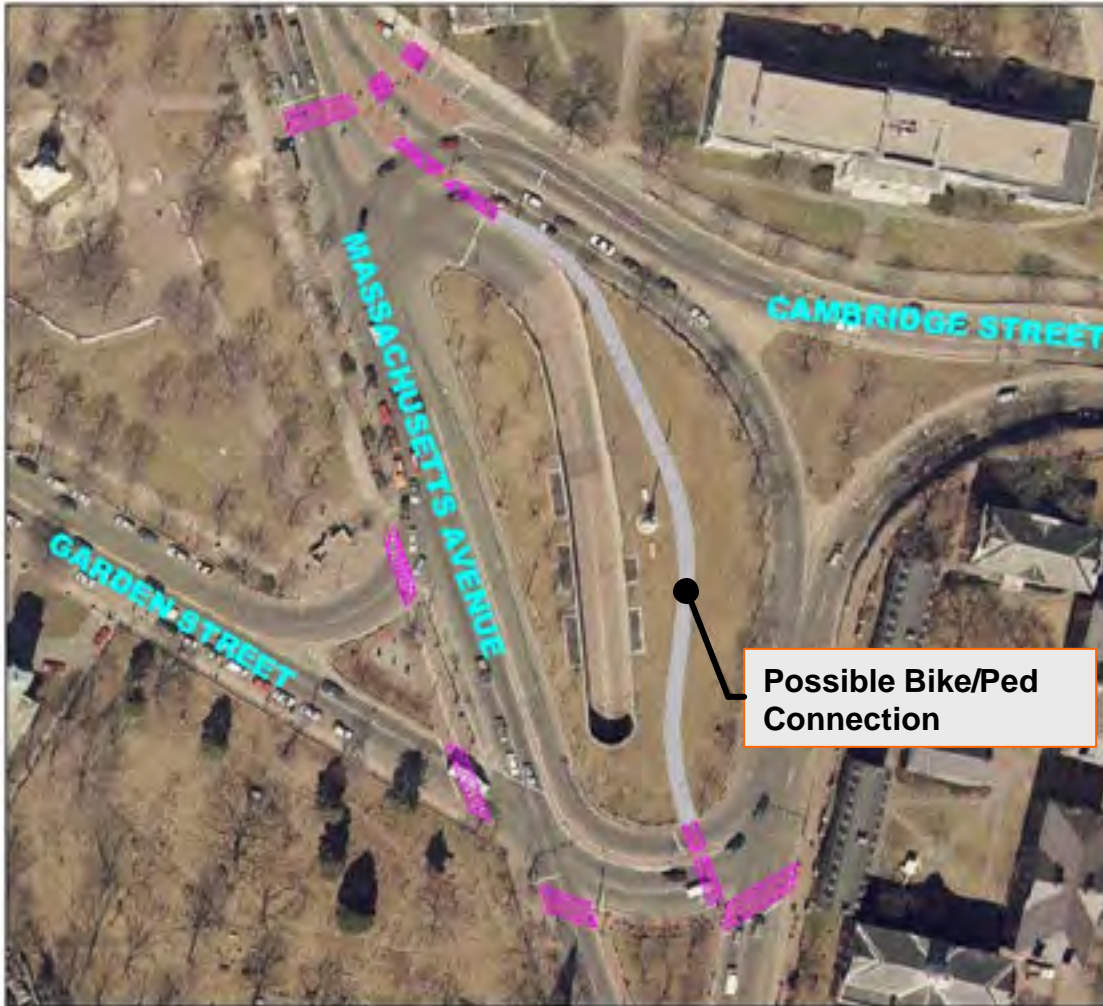
HARVARD SQUARE DESIGN PROJECT

TAMS



City of Cambridge
June 26, 2022

FLAGSTAFF PARK CONNECTION



Garden St. Entrance to
Flagstaff Park

- *Alternate Route for Bikes/Peds between Harvard Sq. and North Mass. Ave (Porter Sq.)*
- *Opens-Up Currently Underutilized Space*



TAMS *Edwards
and Kelcey*

GRAPHIC SCALE 1" = 50' HORIZONTAL

October 17, 2002

BASIC IMPROVEMENTS



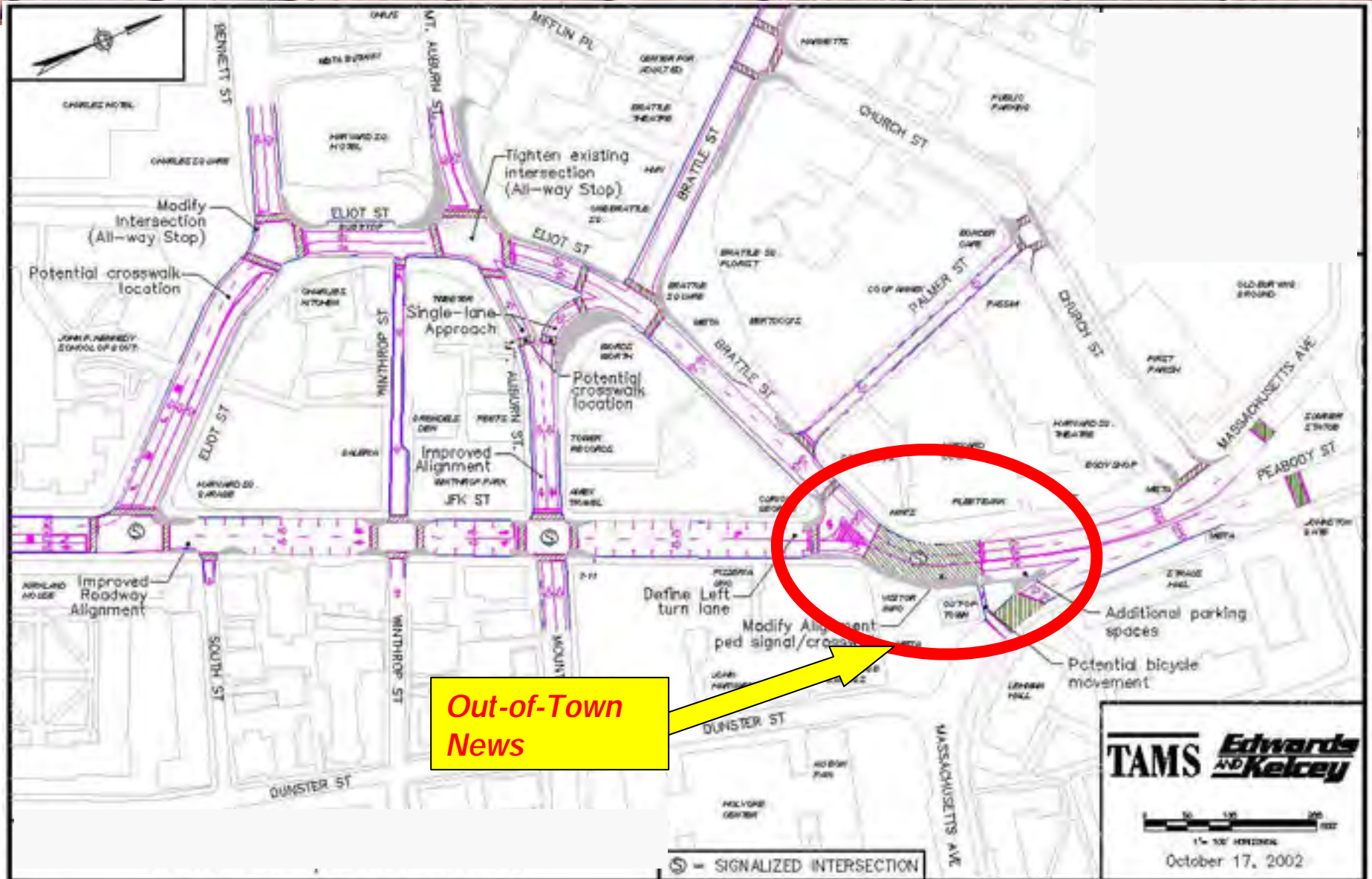
BASIC IMPROVEMENTS

- ***Provides Missing Crosswalks***
- ***Narrows the Pavement Where Possible***
- ***Optimizes Intersection Control (Stop Signs vs. Signals)***
- ***Improves Alignment of Travel Lanes and Vehicle Merges***



BASIC IMPROVEMENTS

3



BASIC IMPROVEMENTS

OUT-OF-TOWN NEWS

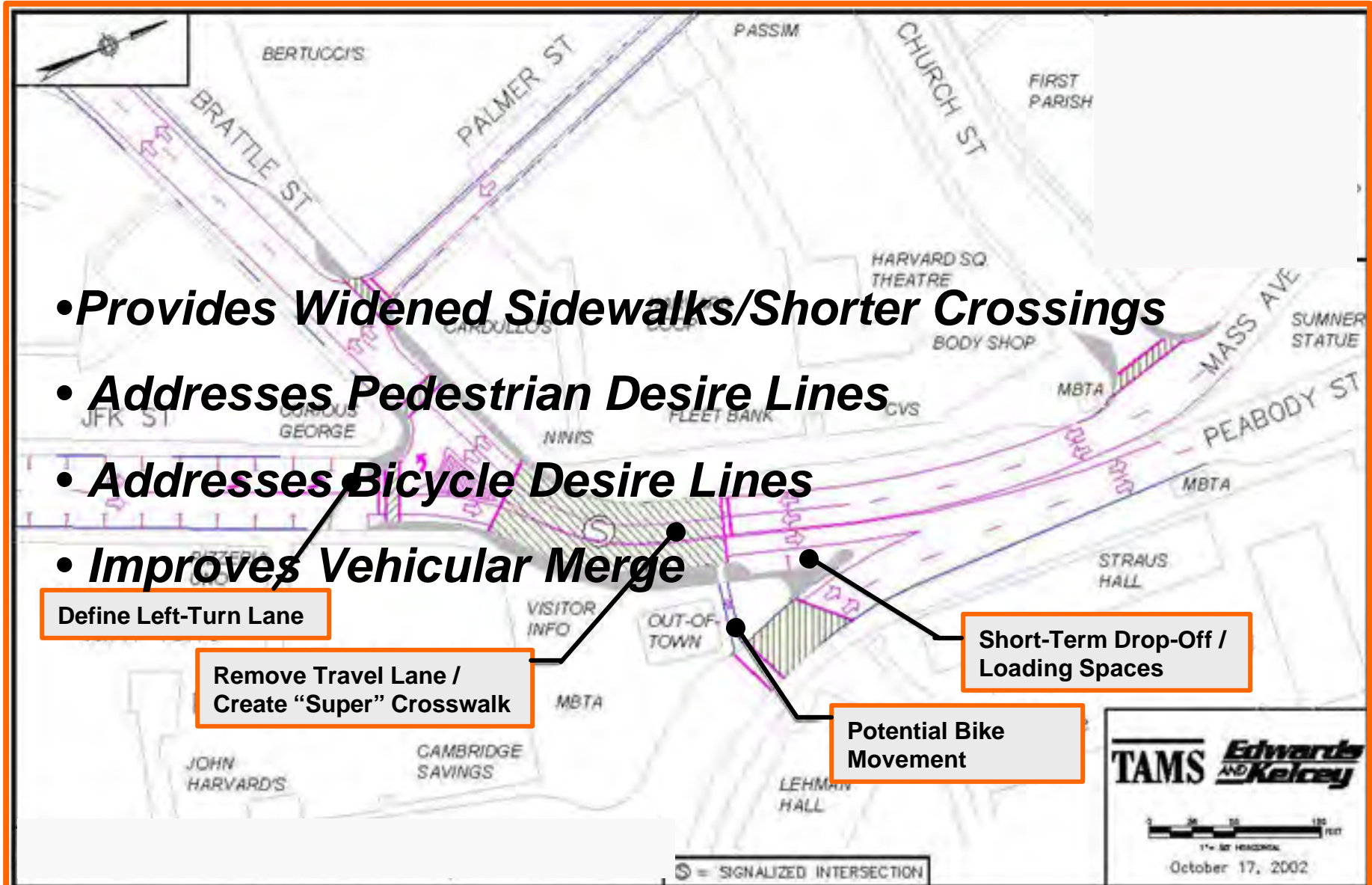
- Provides Widened Sidewalks/Shorter Crossings
- Addresses Pedestrian Desire Lines
- Addresses Bicycle Desire Lines
- Improves Vehicular Merge

Define Left-Turn Lane

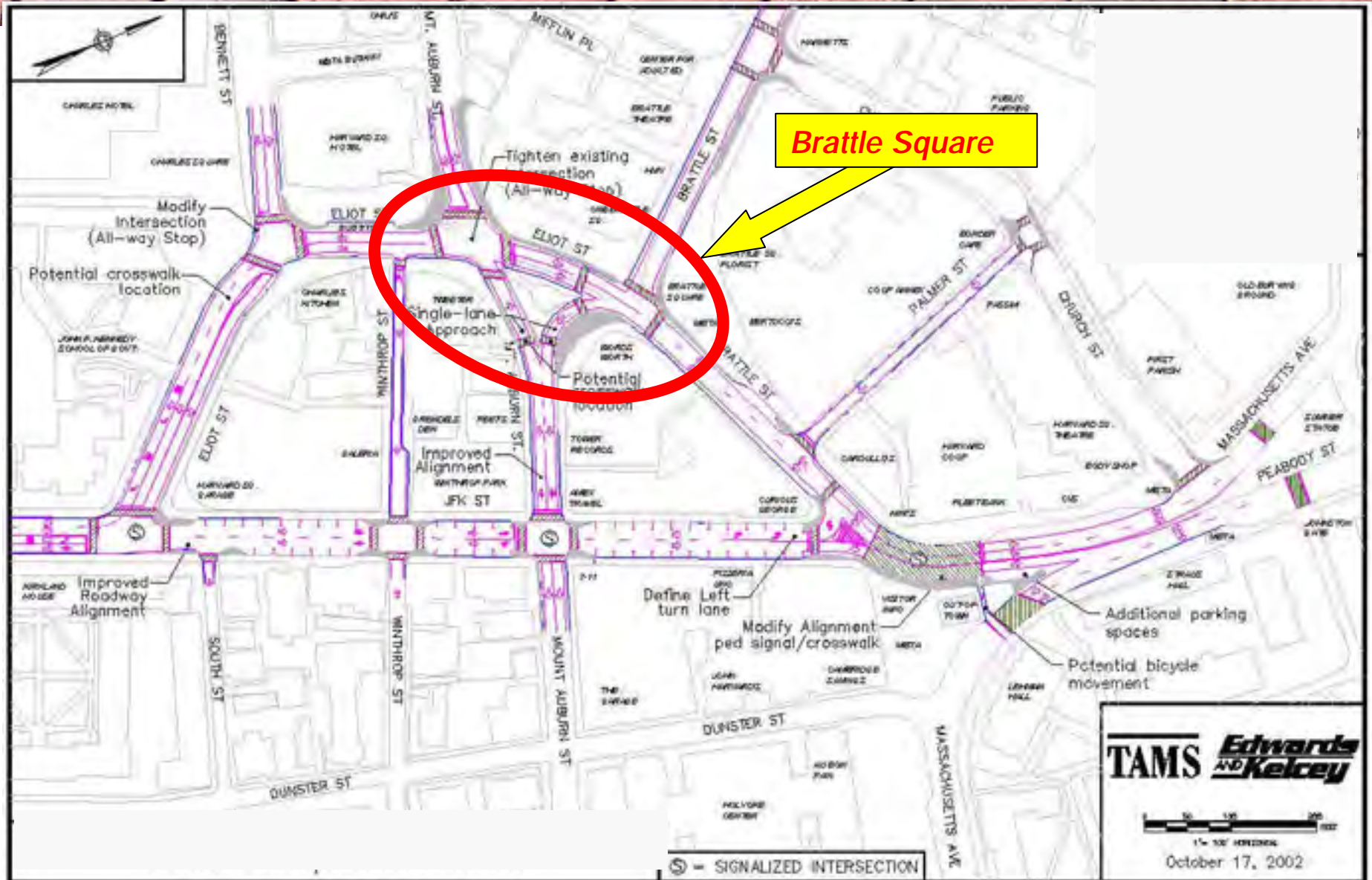
Remove Travel Lane /
Create "Super" Crosswalk

Short-Term Drop-Off /
Loading Spaces

Potential Bike
Movement

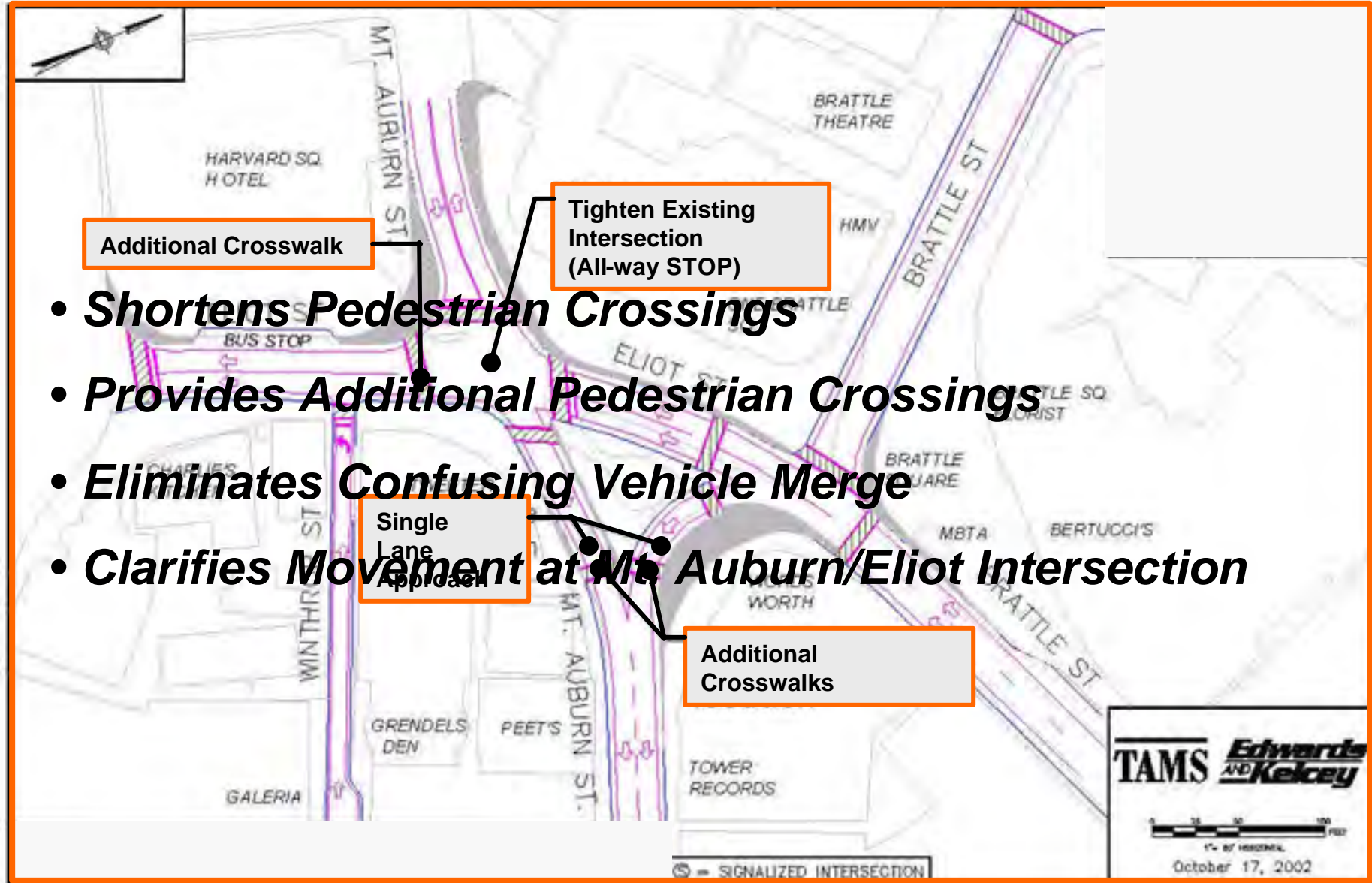


BASIC IMPROVEMENTS



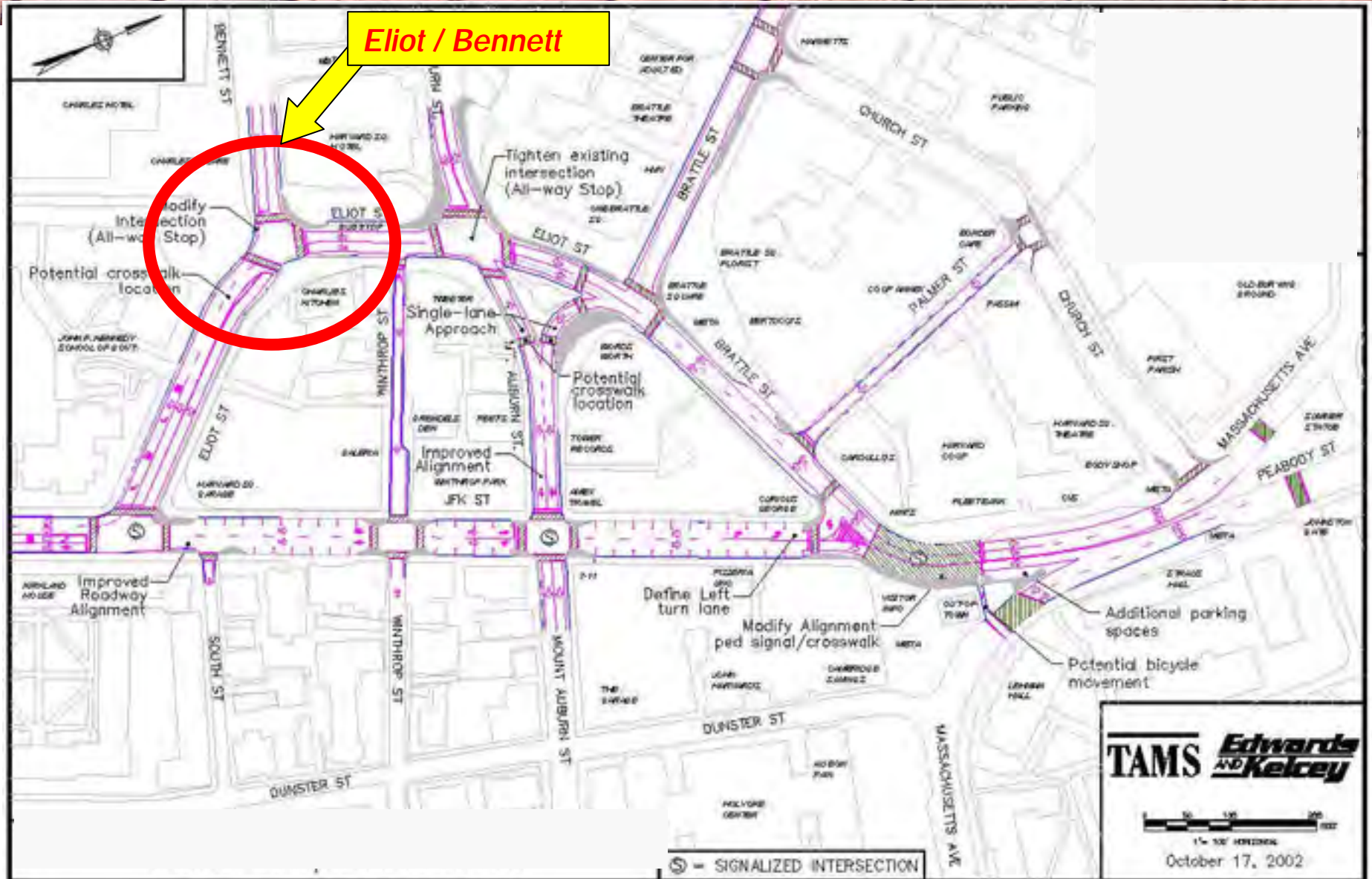
BASIC IMPROVEMENTS

BRATTLE SQUARE



BASIC IMPROVEMENTS

3



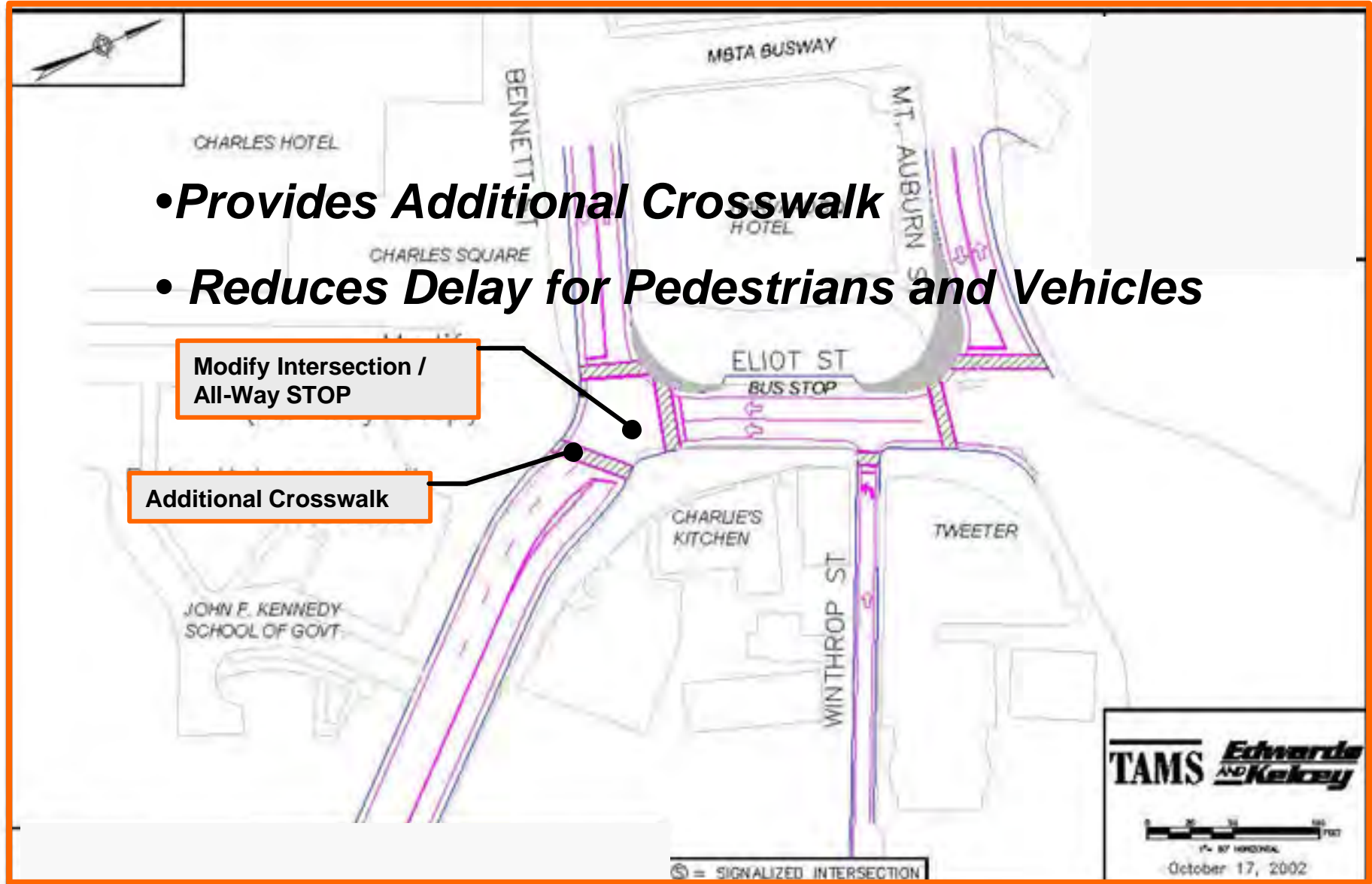
BASIC IMPROVEMENTS

ELIOT / BENNETT INTERSECTION

- ***Provides Additional Crosswalk***
- ***Reduces Delay for Pedestrians and Vehicles***

Modify Intersection /
All-Way STOP

Additional Crosswalk



BASIC IMPROVEMENTS

JFK STREET

- **Shortens Pedestrian Crossings**
- **Shortens Pedestrian Wait Times at Signals**
- **Clarifies Alignment at Intersections**

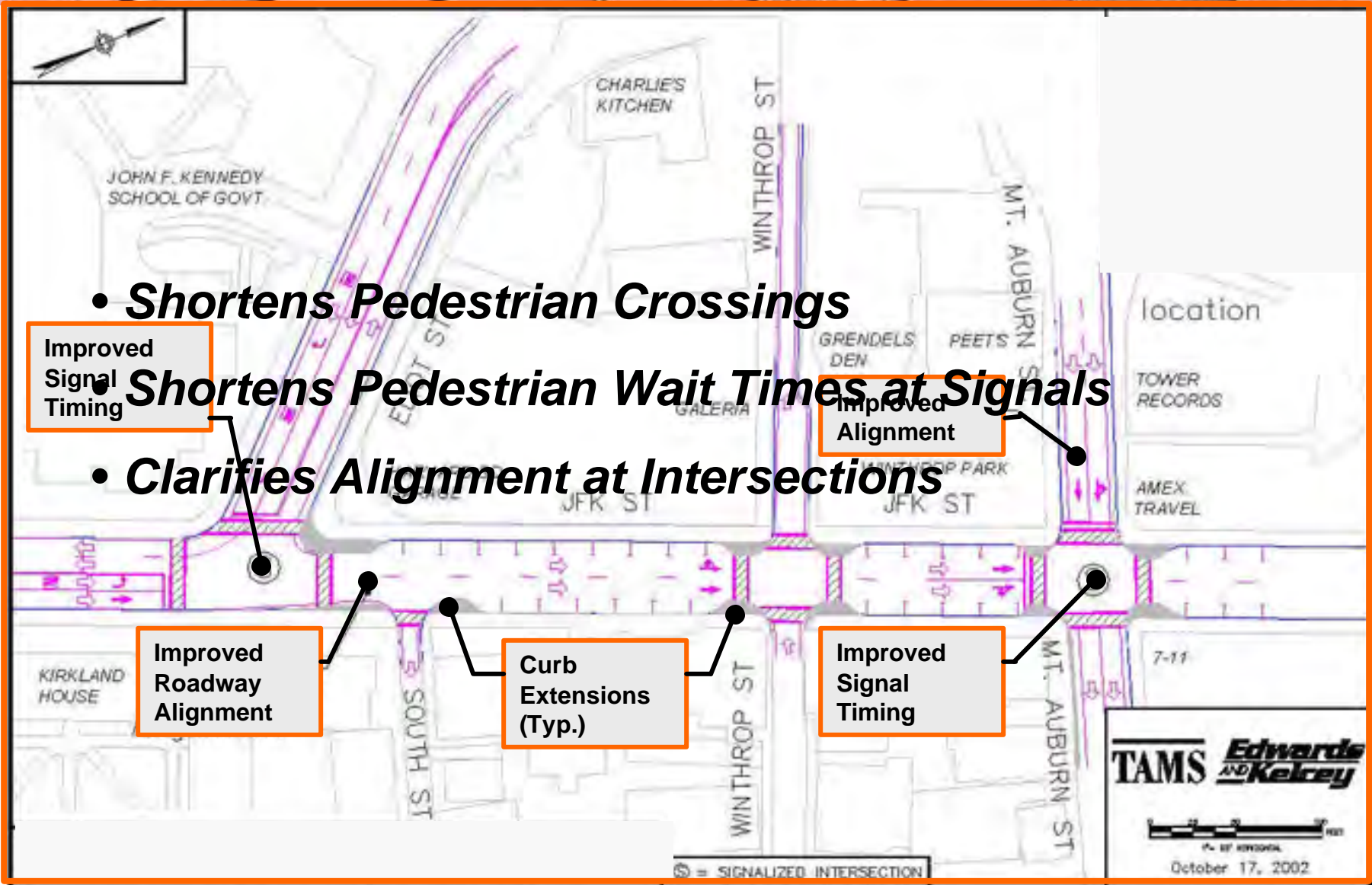
Improved
Signal
Timing

Improved
Alignment

Improved
Roadway
Alignment

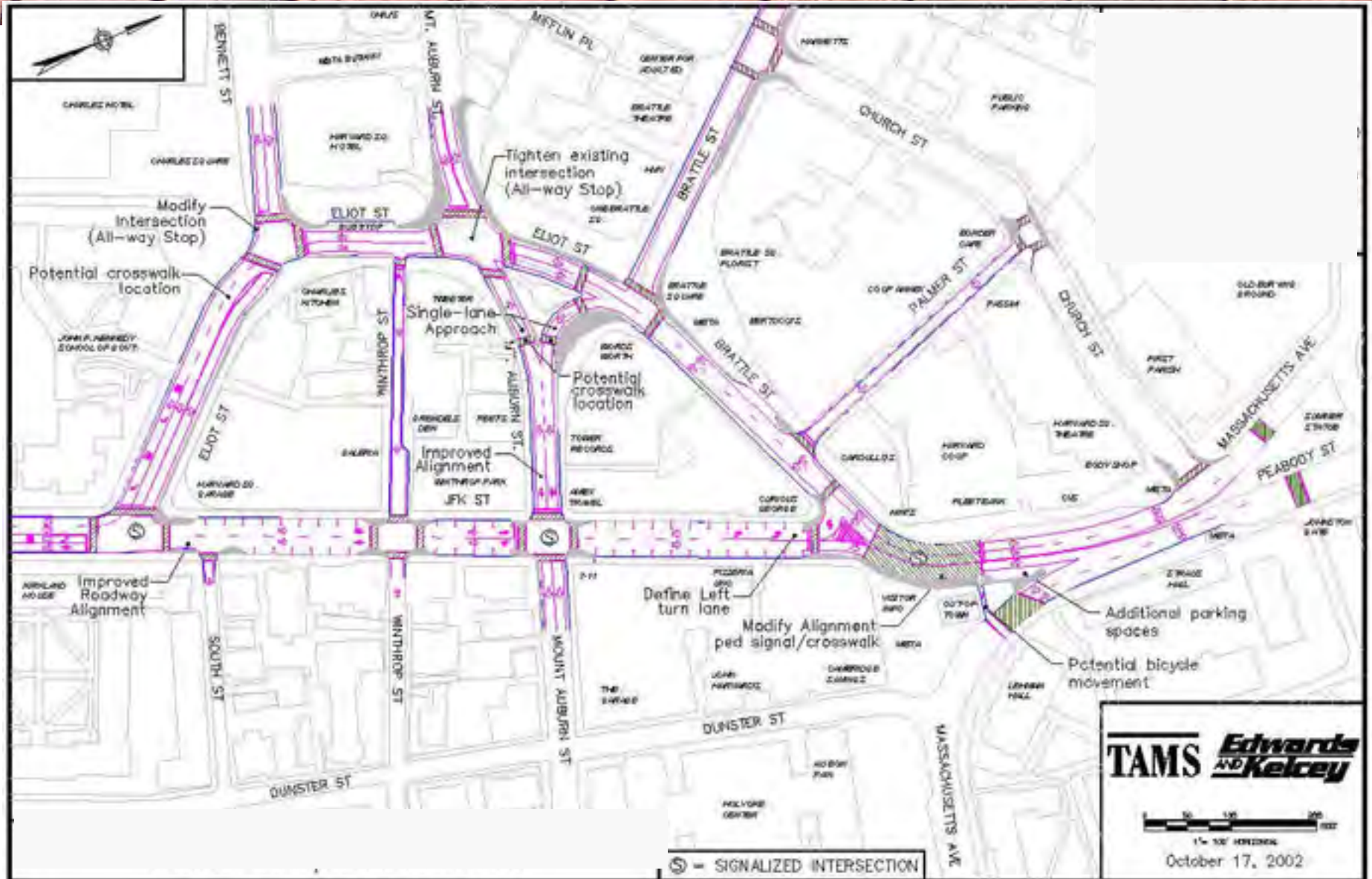
Curb
Extensions
(Typ.)

Improved
Signal
Timing

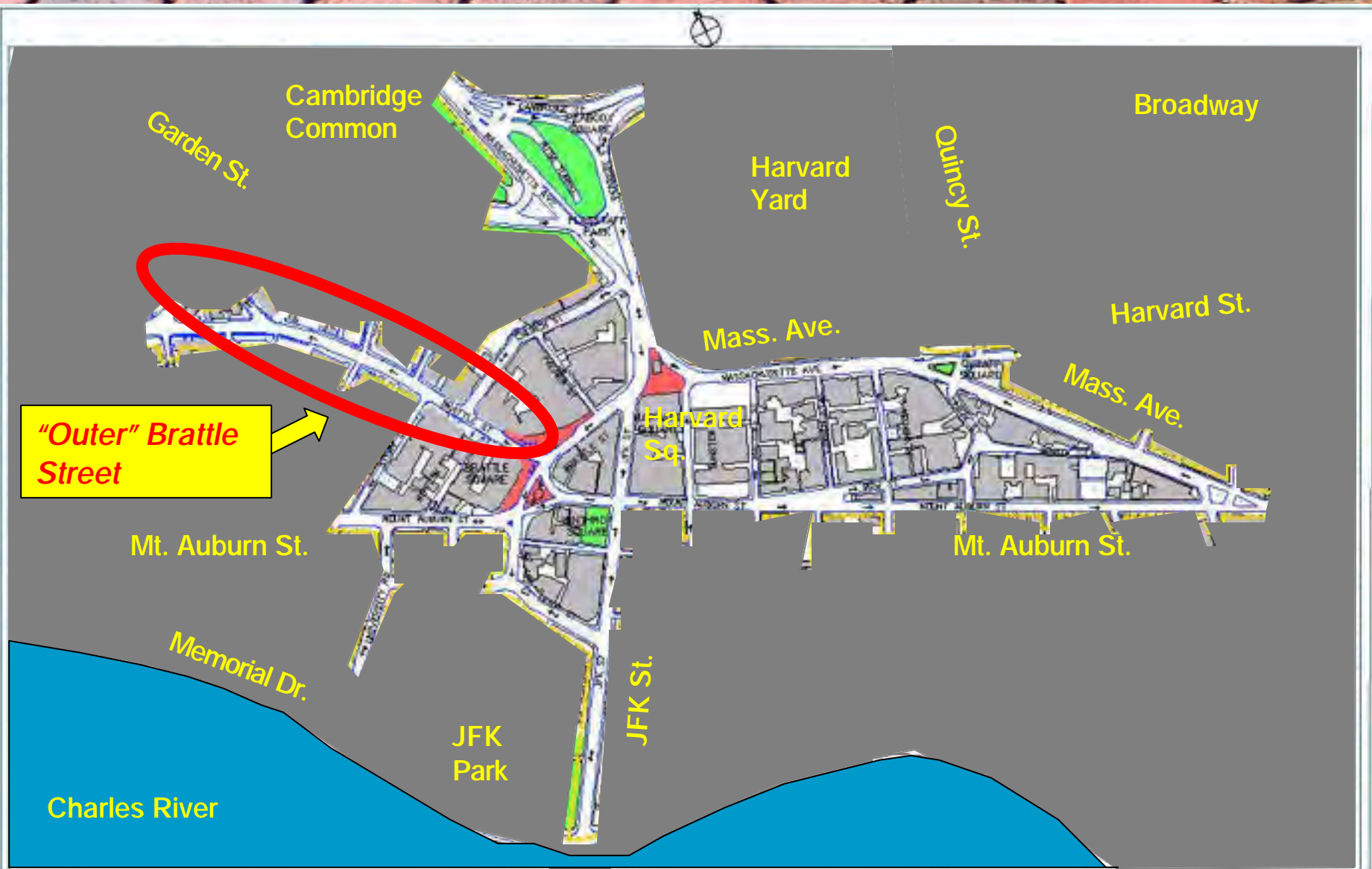


BASIC IMPROVEMENTS

3



"OUTER" BRATTLE STREET





“OUTER” BRATTLE STREET

EXISTING TRAFFIC FLOW



- ***Circuitous Route for Eastbound Vehicles & Cyclists***
- ***Uninviting Gateway to the Square***

CONTRA-FLOW BIKE LANE





“OUTER” BRATTLE STREET

2-WAY TRAFFIC FLOW



- ***Conventional 2-Way Street with Parking on Both Sides***
- ***Functions Well with “STOP” Sign at Eliot Street End***
- ***Variations Possible (Ex. 2-Way to Church Street Only)***

CHURCH STREET



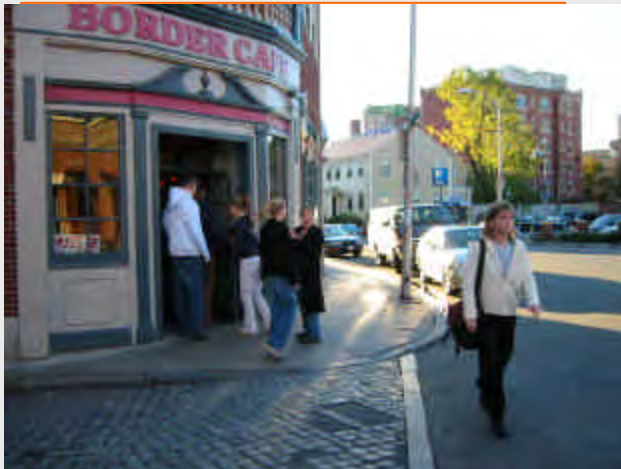
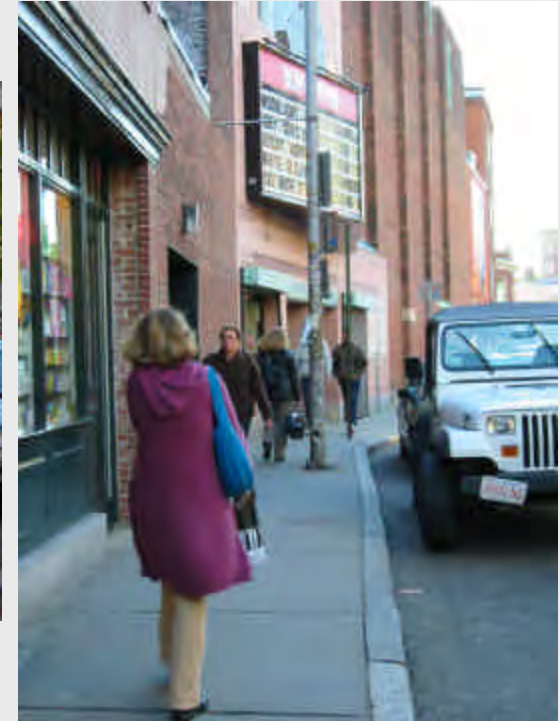
HARVARD SQUARE DESIGN PROJECT

TAMS



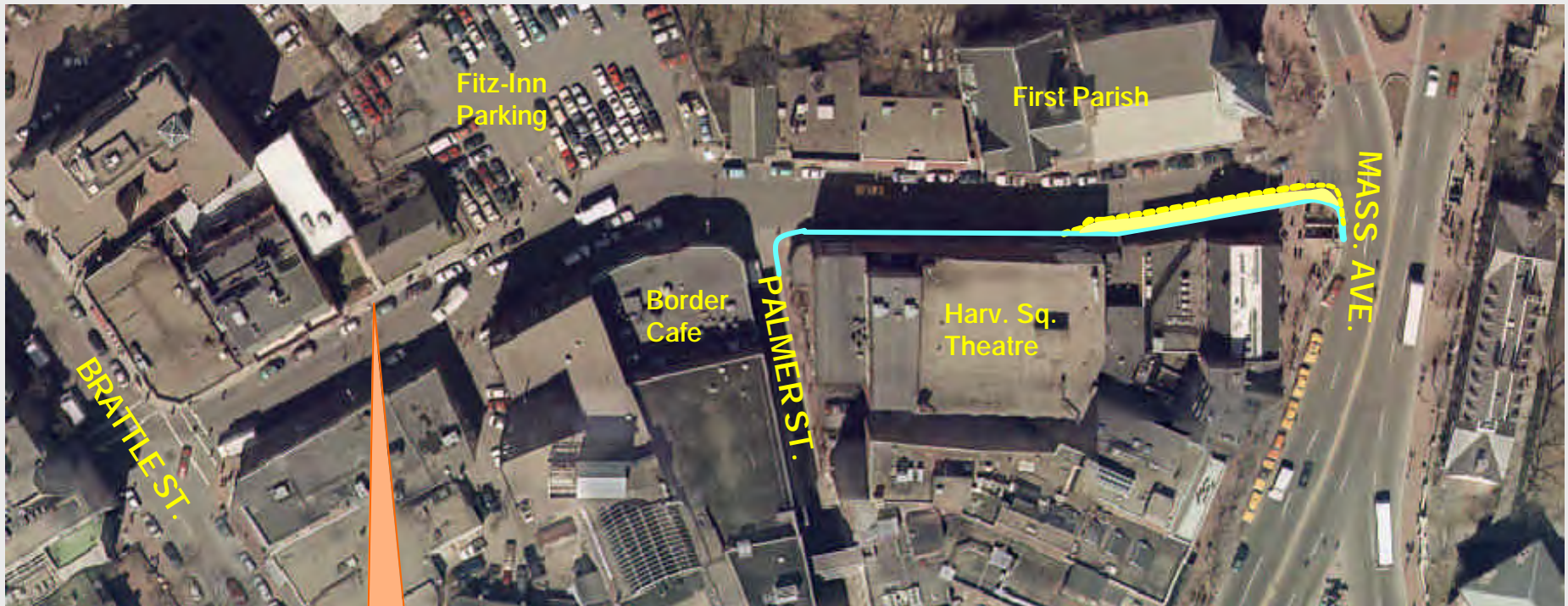
City of Cambridge
June 26, 2002

CHURCH STREET



TAMS *Edwards
AND Kelcey*

CHURCH STREET



Tree Grates

- *One-Way Street*

- *Spot Improvements*

2-WAY JFK / 2-WAY ELIOT

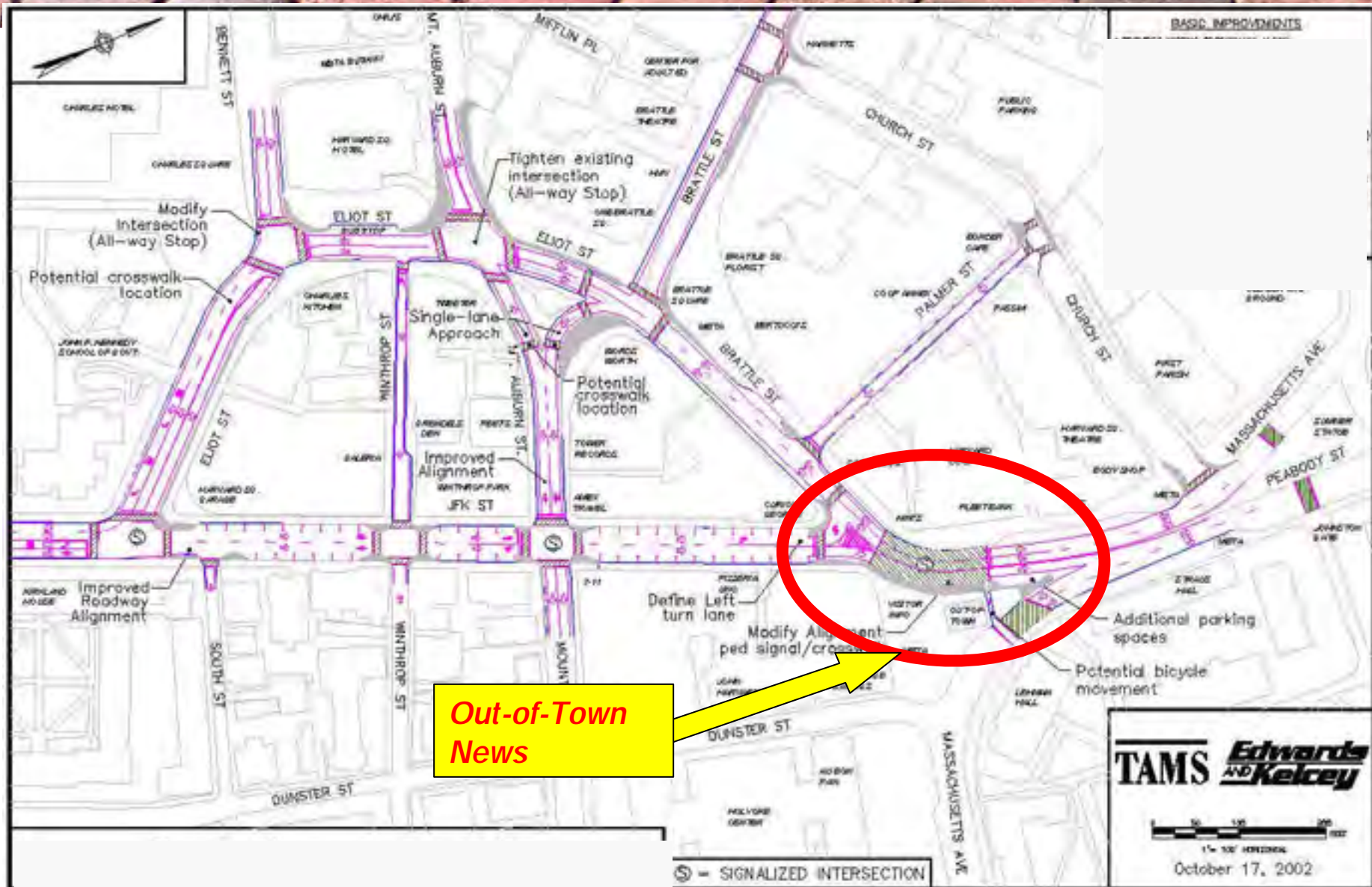


HARVARD SQUARE DESIGN PROJECT

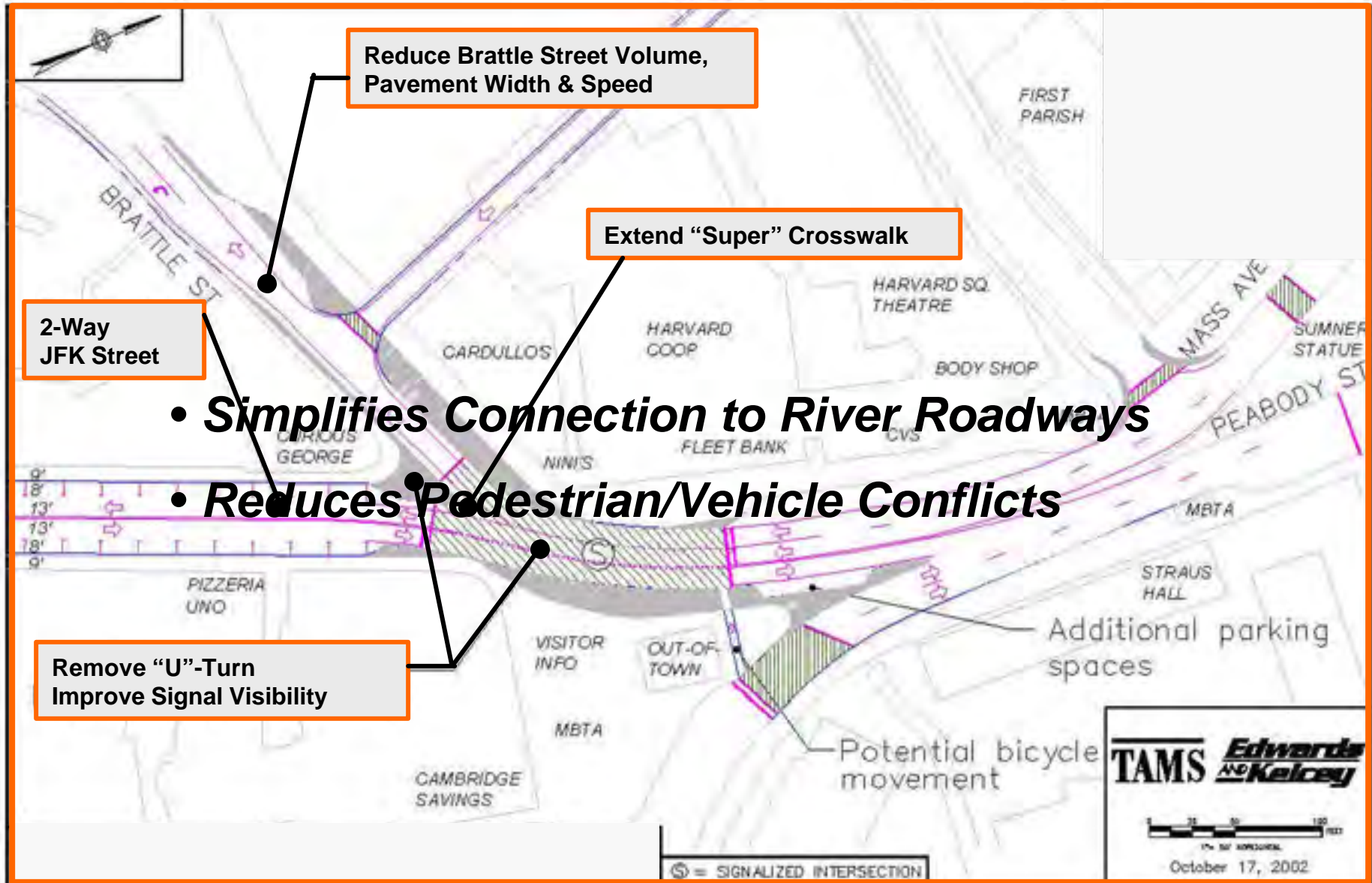
TAMS

City of Cambridge
June 26, 2002

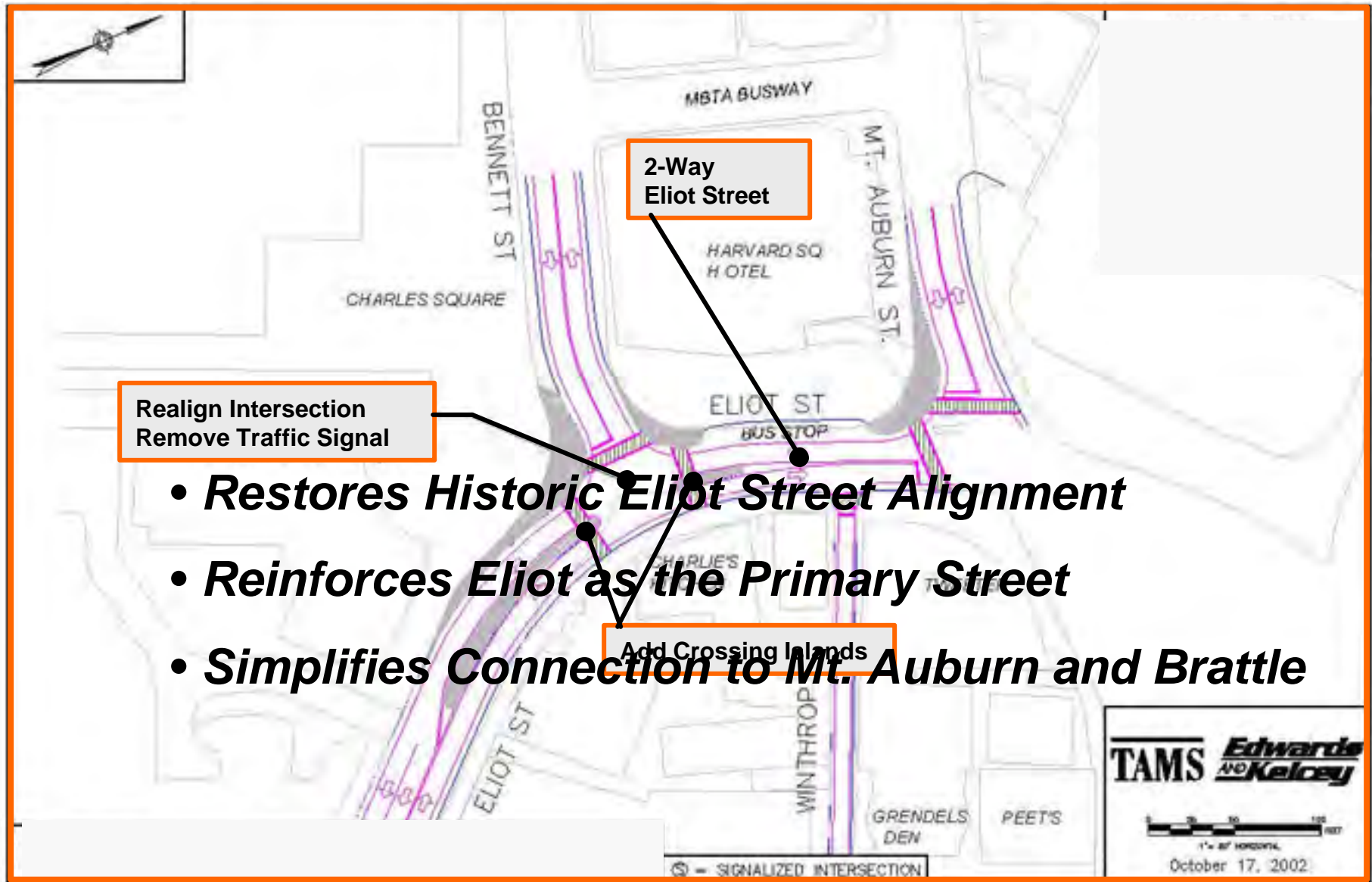
2-WAY JFK / 2-WAY ELIOT



2-WAY JFK / 2-WAY ELIOT OUT-OF-TOWN NEWS

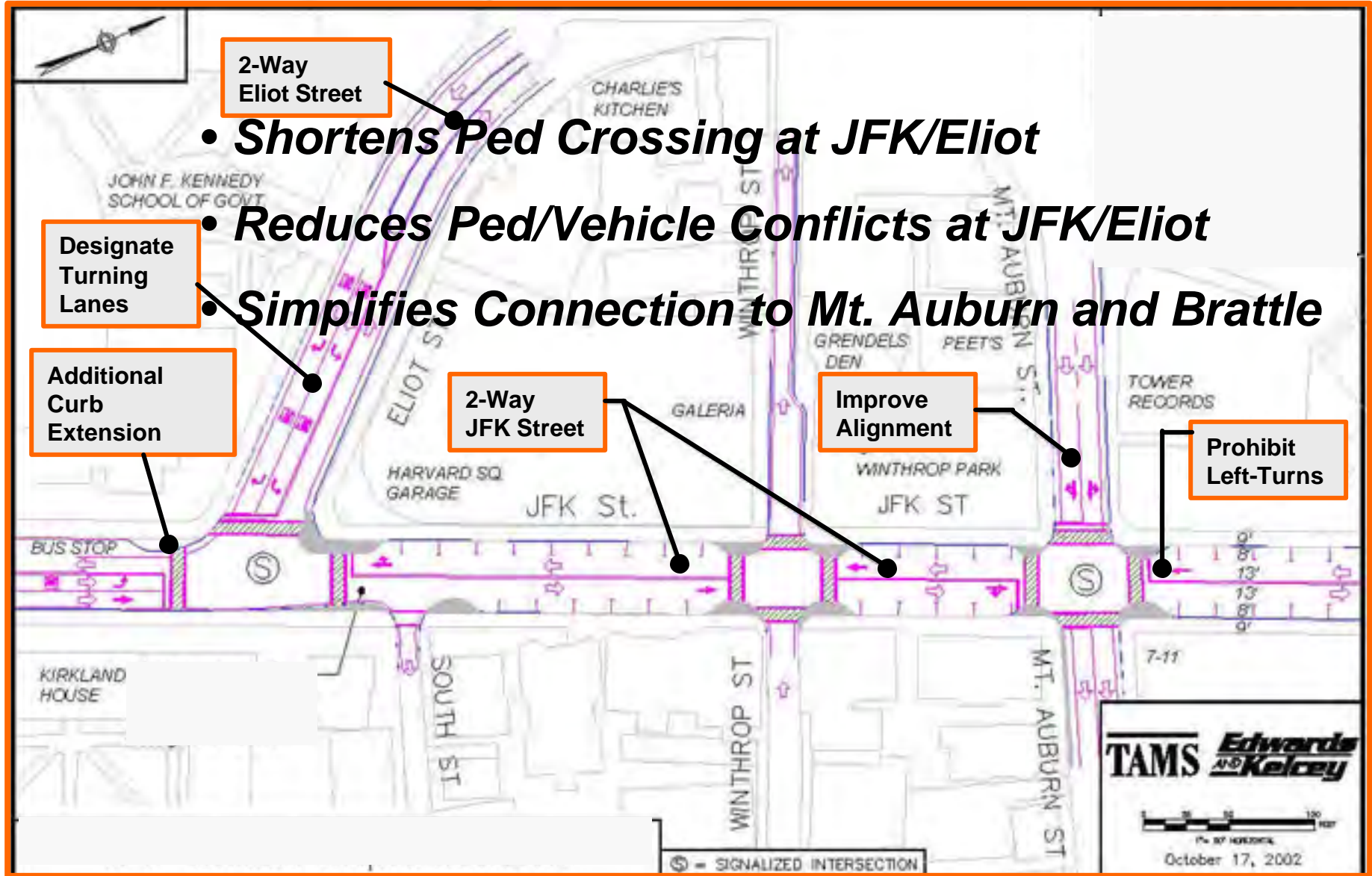


2-WAY JFK / 2-WAY ELIOT ELIOT / BENNETT INTERSECTION



2-WAY JFK / 2-WAY ELIOT

JFK STREET IMPROVEMENTS



SMALL GROUP DISCUSSIONS

