

Harvard Square Design Project

An aerial photograph of Harvard Square in Cambridge, Massachusetts, showing a large-scale construction project. The square is partially excavated, with construction equipment and materials visible. The surrounding historic brick buildings are prominent, including the Albani building on the right. The text 'City of Cambridge Community Development Department' is overlaid in white.

City of Cambridge Community Development Department

In Association With:
TAMS Consultants, Inc.
Edwards & Kelcey, Inc.
Halvorson Design Partnership
Ripman Lighting Consultants

Community Meeting – May 15, 2003



AGENDA

- 1. INTRODUCTIONS / PROJECT BACKGROUND***
- 2. TRANSPORTATION IMPROVEMENTS***
- 3. PLAZA IMPROVEMENTS***
- 4. BREAK***
- 5. SMALL GROUP DISCUSSIONS***
- 6. REPORTING BACK***

HARVARD SQUARE DESIGN COMMITTEE

- ***16 MEMBERS***
- ***BUSINESSES***
- ***RESIDENTS***
- ***INSTITUTIONS***
- ***HARVARD UNIVERSITY STUDENT***
- ***CITY STANDING COMMITTEES***

SCHEDULE

- **COMMITTEE BEGAN MEETING IN APRIL 2002**
- **1st COMMUNITY MEETING (TRANSPORTATION)
NOVEMBER 21, 2002**
- **2nd COMMUNITY MEETING (PLAZAS)
MAY 15, 2003**
- **COMMUNITY OPEN HOUSE - WINTER 2003**
- **CONSTRUCTION - SUMMER/FALL 2004**

BASIC INFRASTRUCTURE IMPROVEMENTS



OPPORTUNITY: ENHANCE THE SQUARE FOR ALL USERS



PROJECT AREA



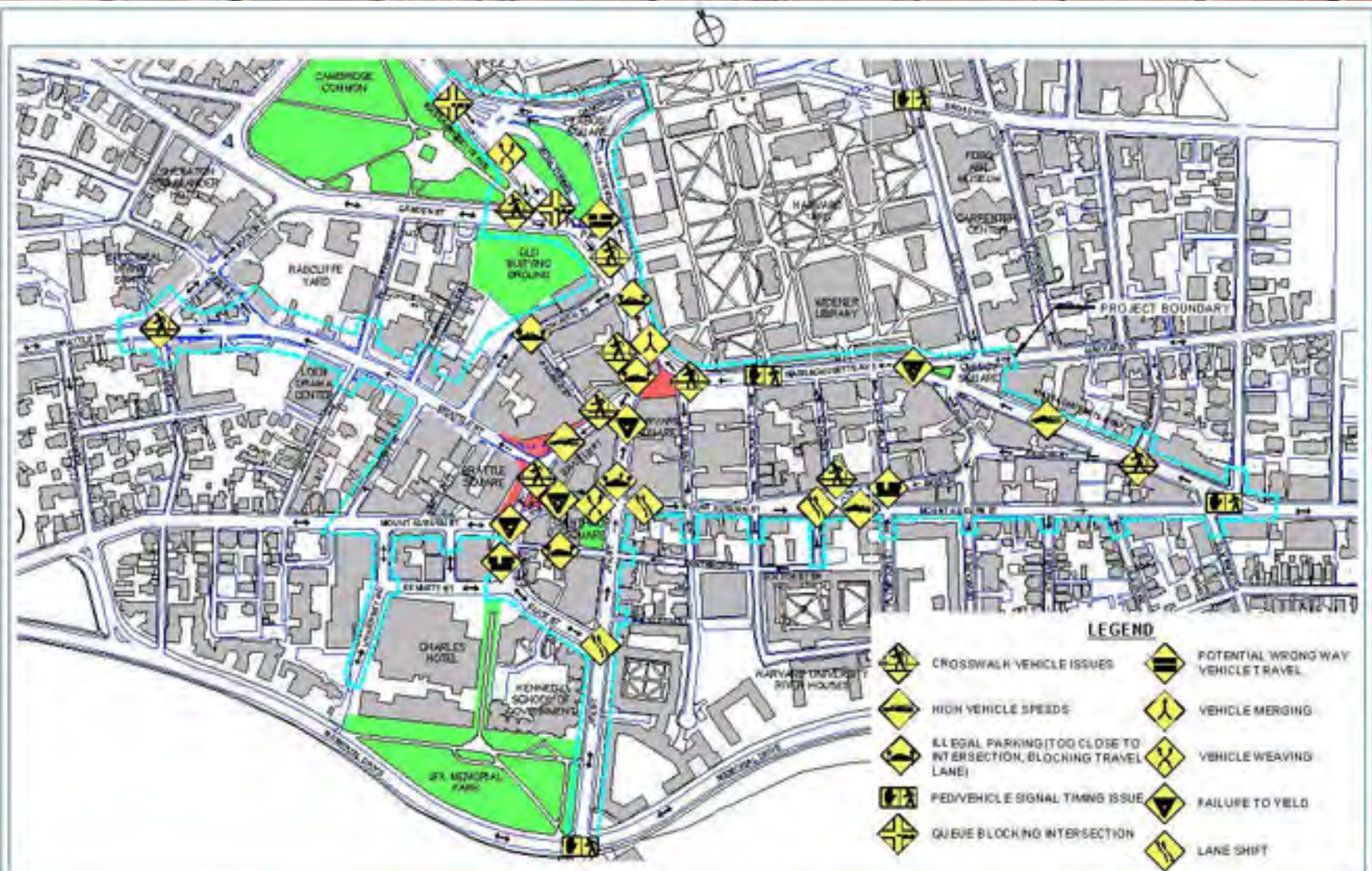
HARVARD SQUARE DESIGN PROJECT

TAMS



City of Cambridge
June 26, 2002

EXISTING ISSUES



HARVARD SQUARE DESIGN PROJECT

TAMS

THE SHAWMUT GROUP

THE SHAWMUT GROUP
200 MAIN STREET, SUITE 200
BOSTON, MASSACHUSETTS 02111-1107

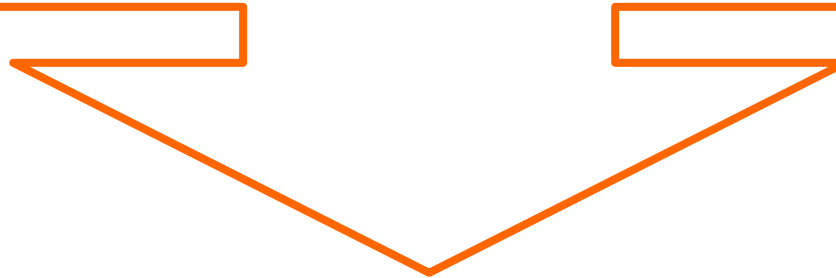
EXISTING ISSUES

0 50 100 200

City of Cambridge

TRANSPORTATION - RECAP

- *Conducted Detailed Transportation Analysis*
- *Evaluated Circulation for Pedestrians, Cyclists, Motorists*

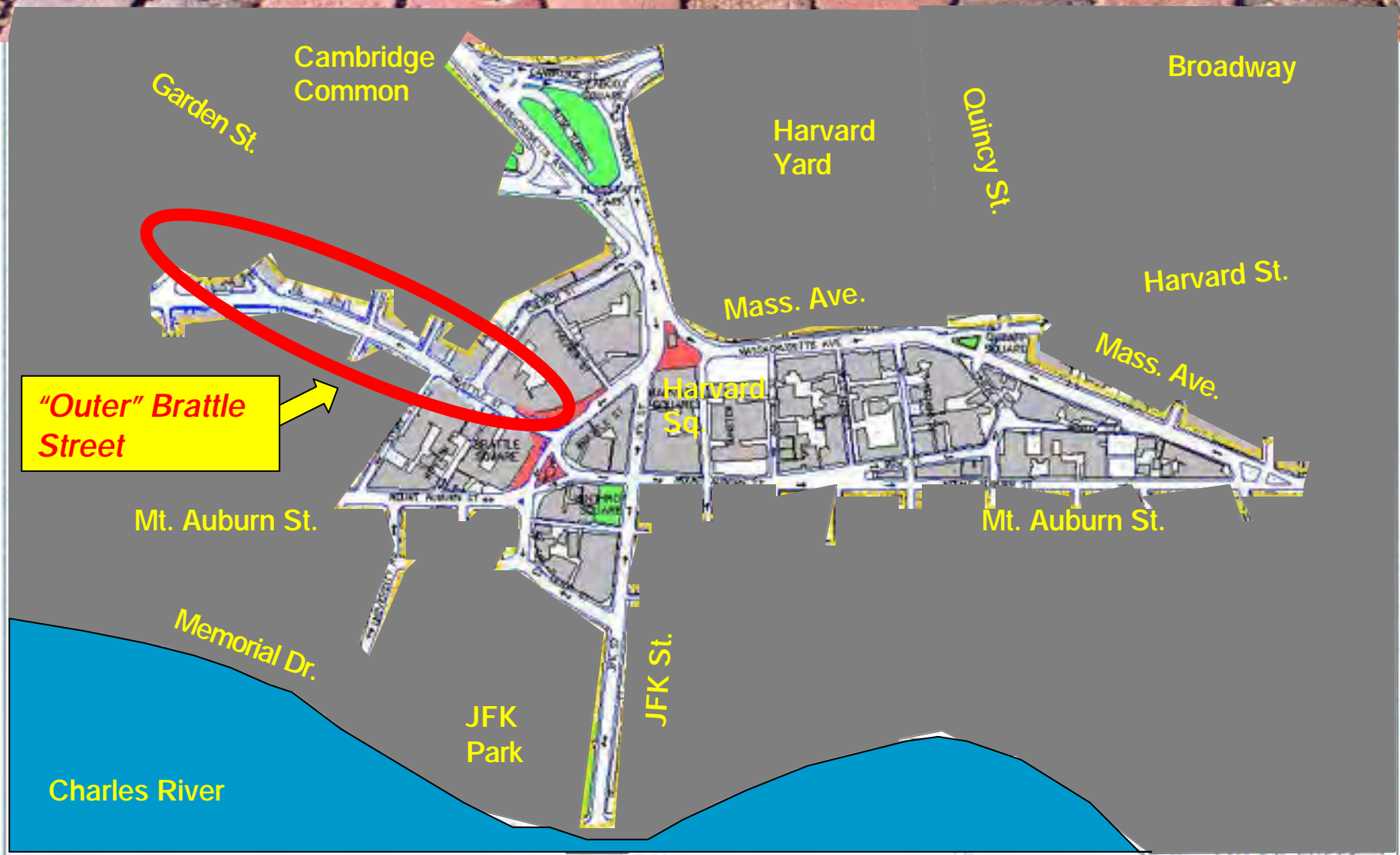


- *Determined Number of Travel Lanes Needed*
 - *Determined Street Directions*
- *Identified “Extra Space” in Public Right-of-Way*

2-WAY JFK / 2-WAY ELIOT



"OUTER" BRATTLE STREET





“OUTER” BRATTLE STREET

EXISTING TRAFFIC FLOW



- ***Circuitous Route for Eastbound Vehicles & Cyclists***
- ***Uninviting Gateway to the Square***

CONTRA-FLOW BIKE LANE





“OUTER” BRATTLE STREET

2-WAY TRAFFIC FLOW



- ***Conventional 2-Way Street with Parking on Both Sides***
- ***Functions Well with “STOP” Sign at Eliot Street End***
- ***Increases Traffic Volumes on Brattle Street***
- ***Variations Possible***



“OUTER” BRATTLE STREET



- ***Current Route into Square from Concord Avenue***
- ***Berkeley Street***



“OUTER” BRATTLE STREET **MAINTAIN ONE-WAY BRATTLE**



- ***Maintain Brattle Street Flow “As-Is”***
- ***Sign Bike Route via Hawthorne / Mt. Auburn***

TRANSPORTATION IMPROVEMENTS

- **Provide Missing Crosswalks**
- **Narrow the Pavement Where Possible**
- **Provide Accommodation for Cyclists**
- **Improve Alignment of Travel Lanes and Vehicle Merges**



HARVARD SQUARE DESIGN PROJECT

TRANSPORTATION IMPROVEMENTS

OUT-OF-TOWN NEWS

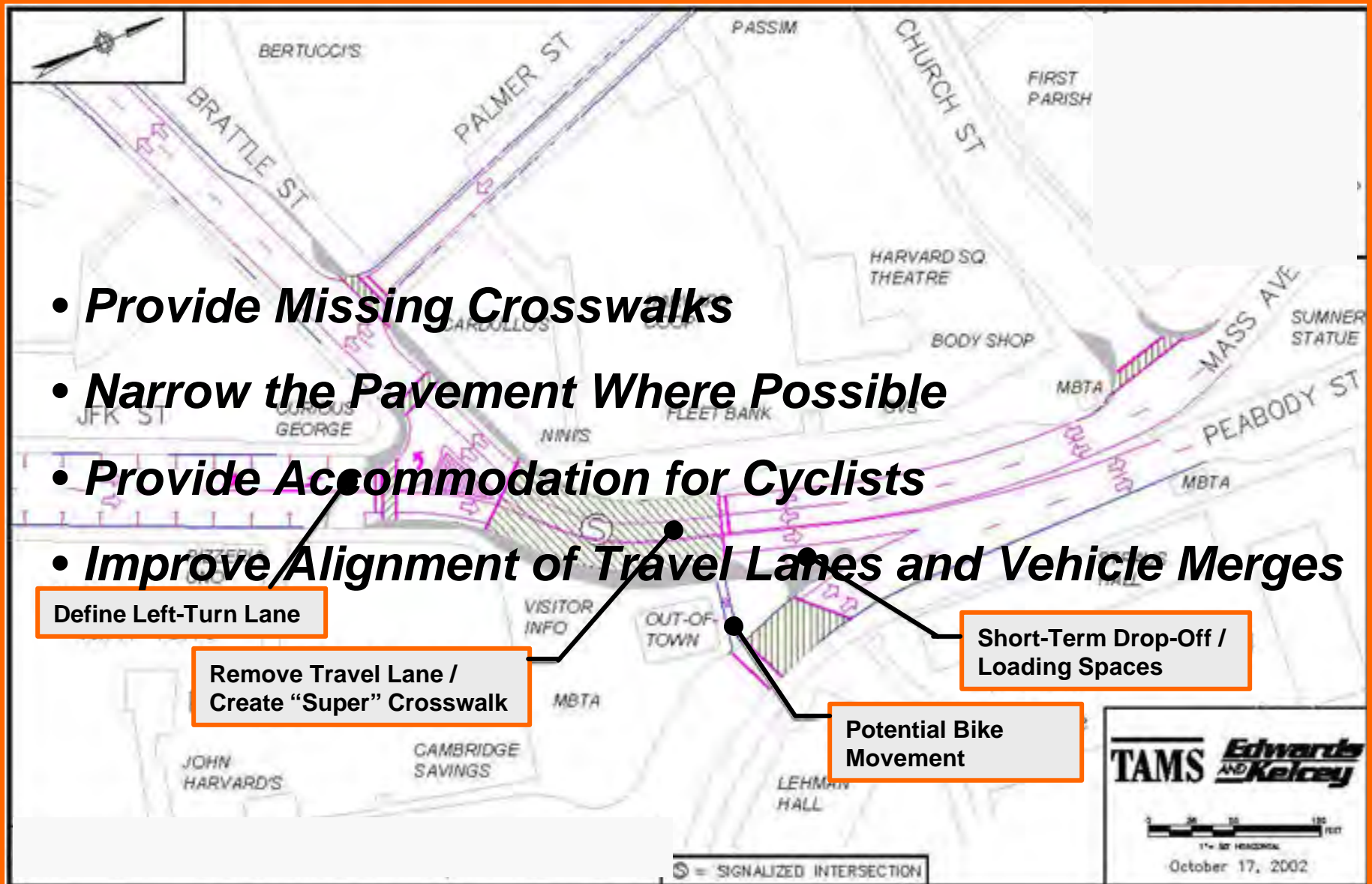
- *Provide Missing Crosswalks*
- *Narrow the Pavement Where Possible*
- *Provide Accommodation for Cyclists*
- *Improve Alignment of Travel Lanes and Vehicle Merges*

Define Left-Turn Lane

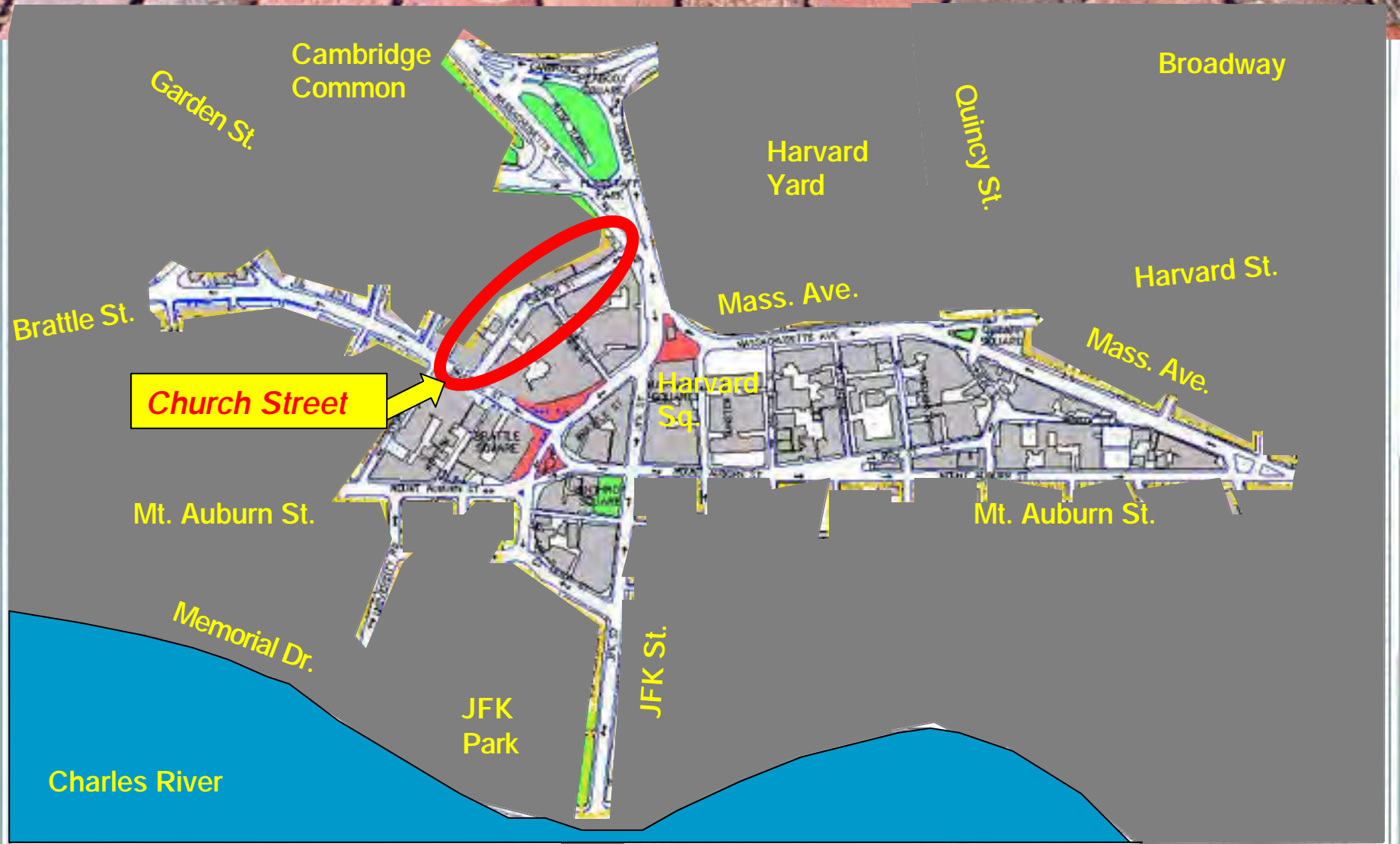
Remove Travel Lane /
Create "Super" Crosswalk

Short-Term Drop-Off /
Loading Spaces

Potential Bike
Movement



TRANSPORTATION IMPROVEMENTS



HARVARD SQUARE DESIGN PROJECT

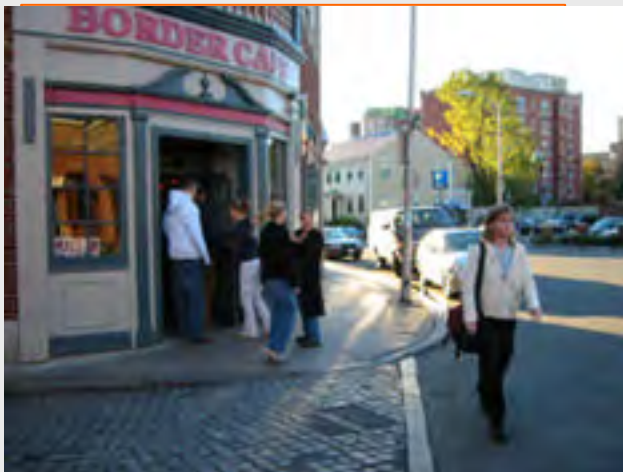
TAMS



City of Cambridge
June 20, 2002

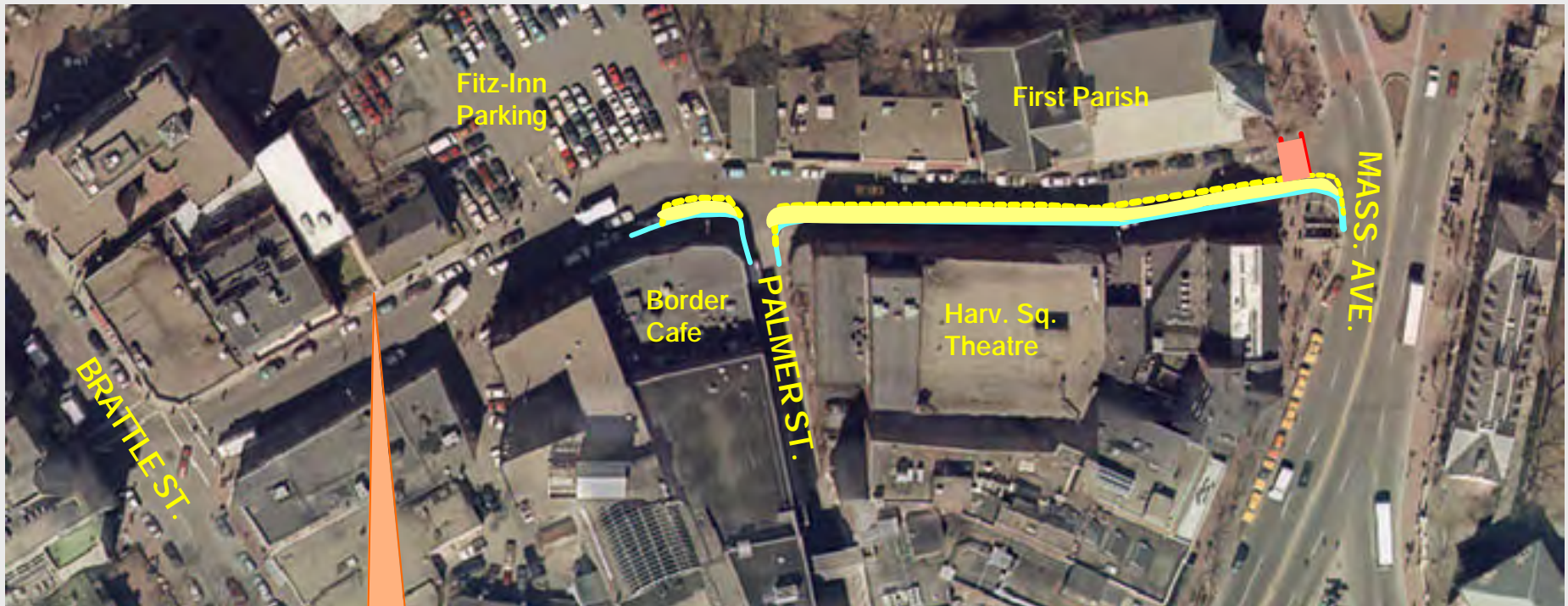
TRANSPORTATION IMPROVEMENTS

CHURCH STREET



TRANSPORTATION IMPROVEMENTS

CHURCH STREET



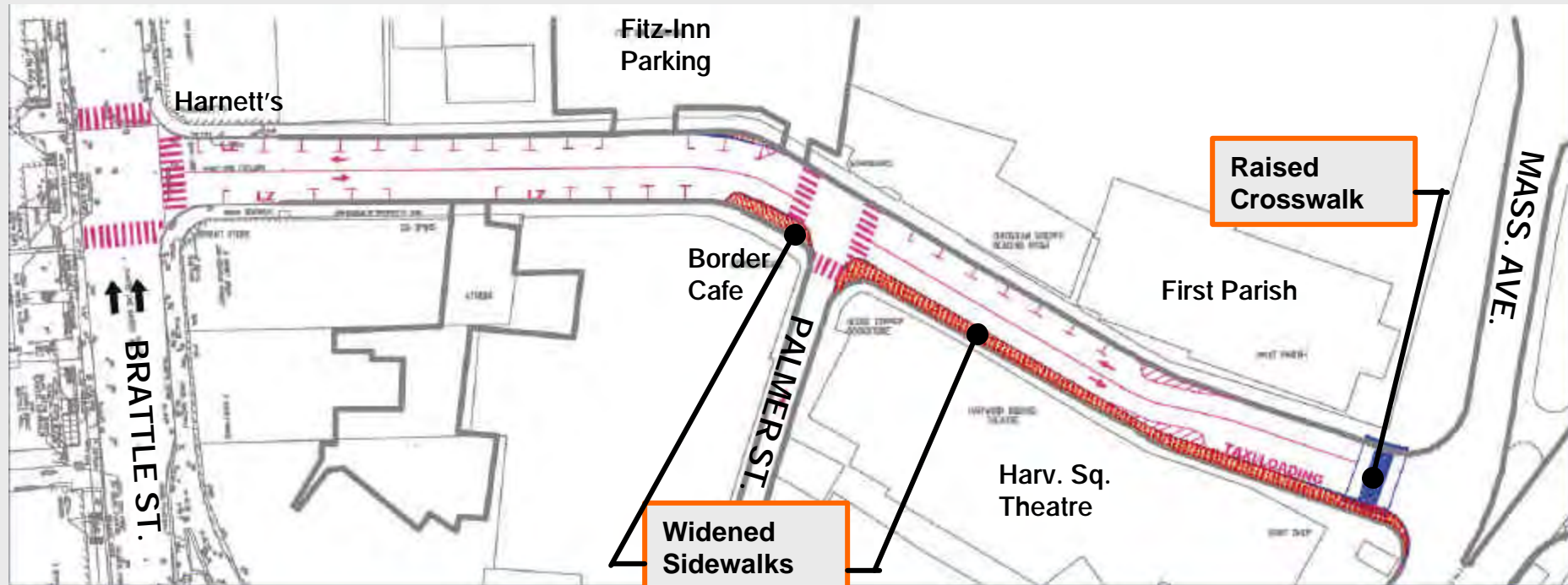
Tree Grates

- *One-Way Street*

- *Improved Two-Way Street*

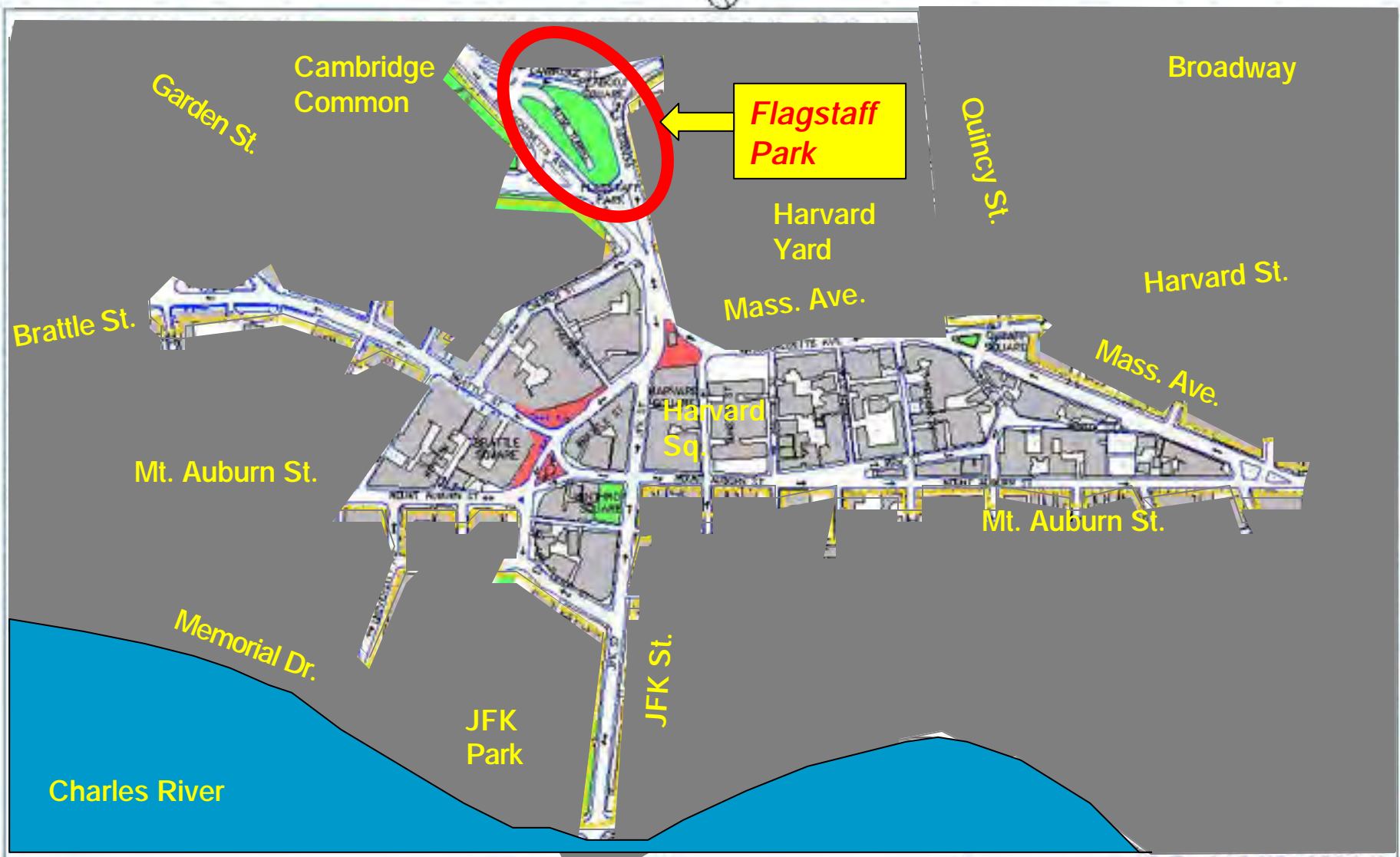
TRANSPORTATION IMPROVEMENTS

CHURCH STREET



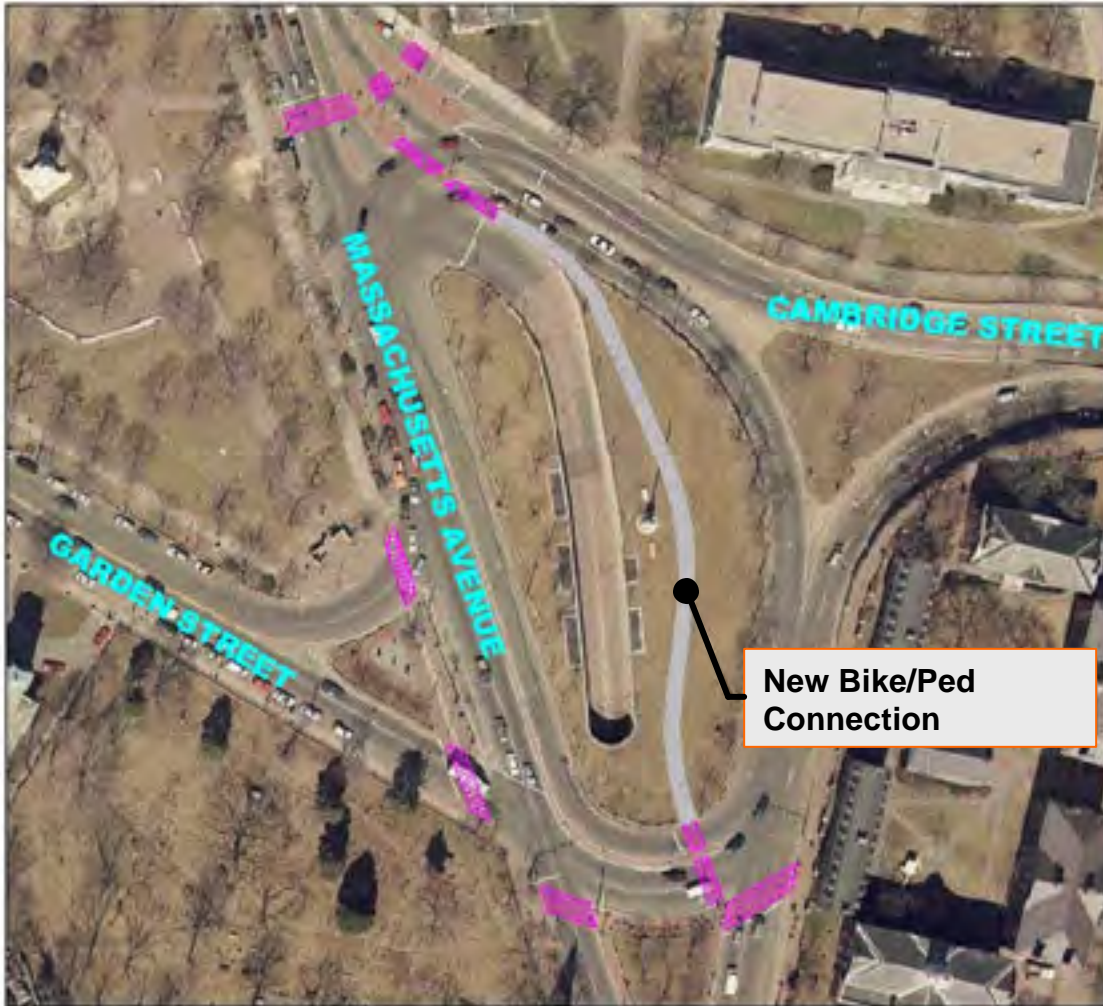
- ***Maintains 2-Way Flow***
- ***Maintains Taxi / Loading Zone***
- ***Net Loss of 8 Parking Spaces***

TRANSPORTATION IMPROVEMENTS



TRANSPORTATION IMPROVEMENTS

FLAGSTAFF PARK CONNECTION



New Bike/Ped Connection



Garden St. Entrance to Flagstaff Park

- *Alternate Route for Bikes/Peds between Harvard Sq. and North Mass. Ave (Porter Sq.)*
- *Opens-Up Currently Underutilized Space*

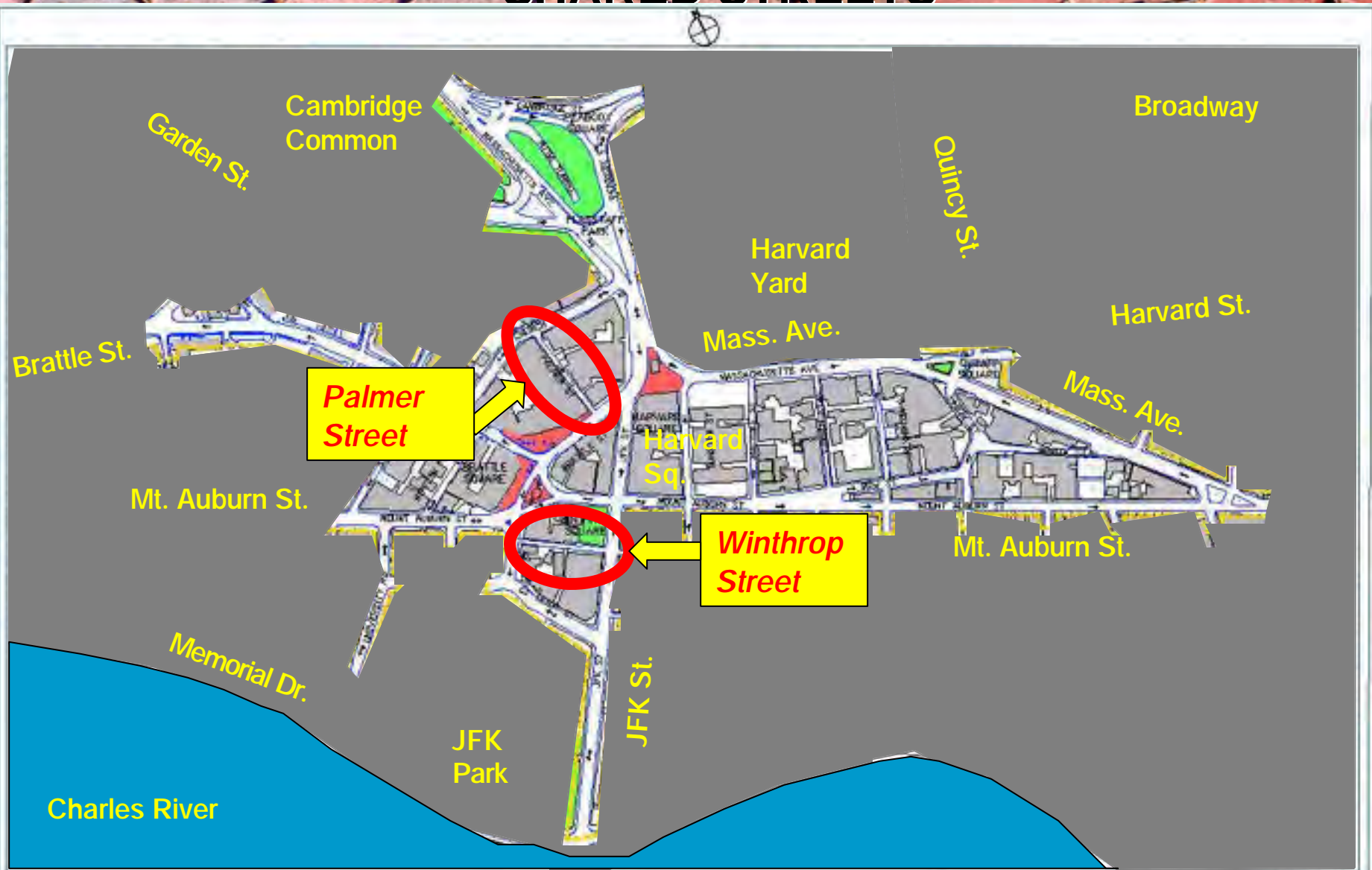


TAMS *Edwards and Kelcey*

GRAPHIC SCALE 1" = 50' HORIZONTAL

October 17, 2002

SHARED STREETS

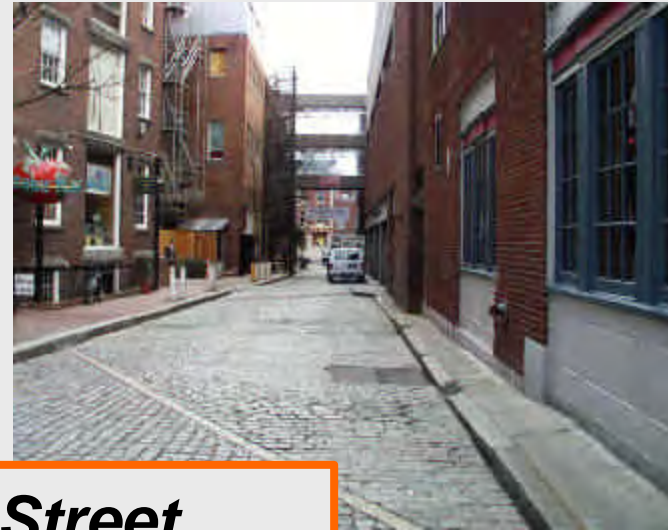


HARVARD SQUARE DESIGN PROJECT

TAMS

City of Cambridge
June 26, 2003

SHARED STREETS



Palmer Street



Winthrop Street

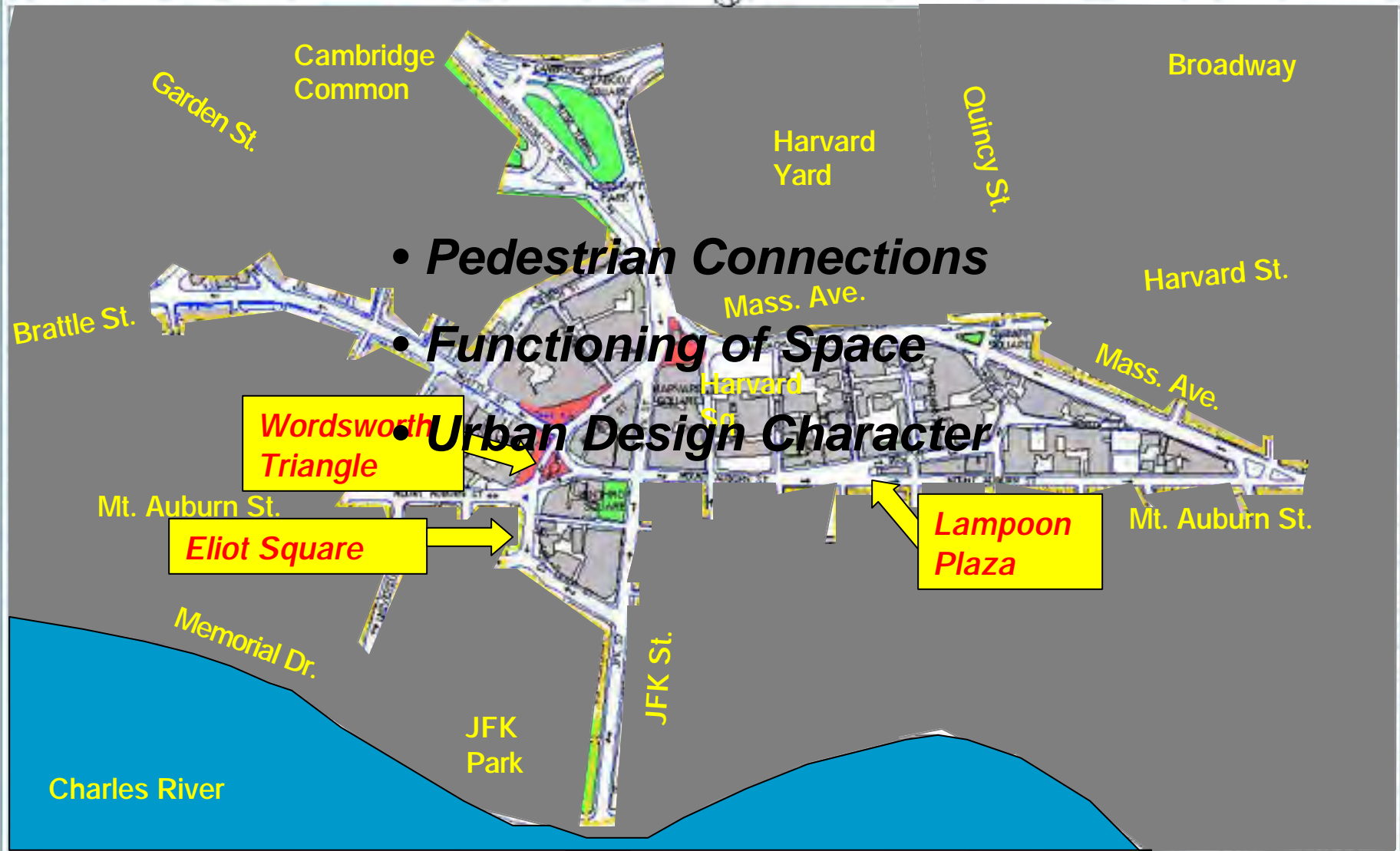
PLAZA IMPROVEMENTS

- Pedestrian Connections
- Functioning of Space
- Urban Design Character

Wordsworth Triangle

Eliot Square

Lampoon Plaza



PLAZA IMPROVEMENTS

MINIMUM CHANGE AREAS



***DeGuglielmo Plaza
– Works Well***

PLAZA IMPROVEMENTS

MINIMUM CHANGE AREAS



***One Brattle Square –
Physical Constraints
(MBTA Vents)***



PLAZA IMPROVEMENTS

MINIMUM CHANGE AREAS – “THE PIT”

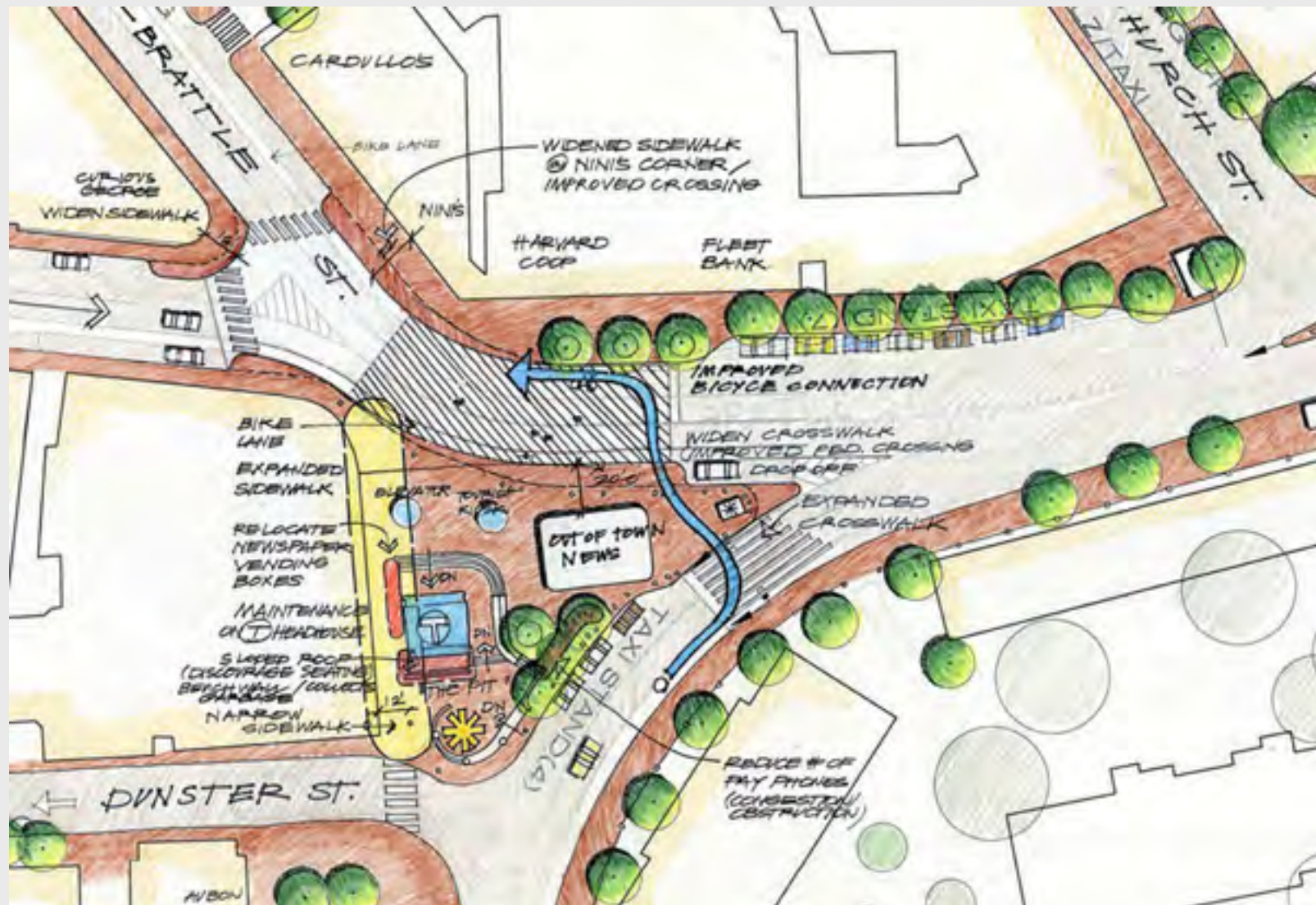


PLAZA IMPROVEMENTS

MINIMUM CHANGE AREAS

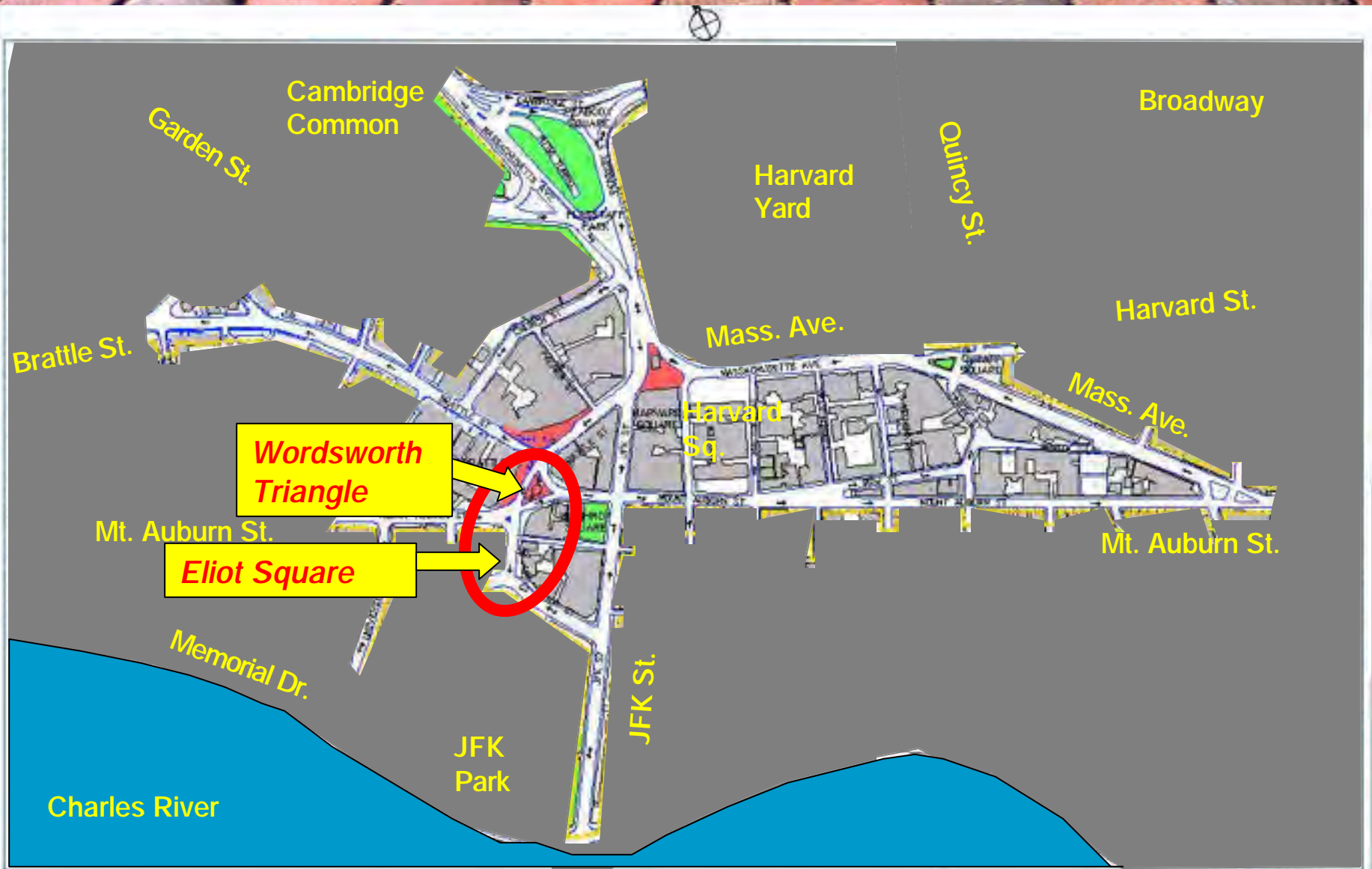
PLAZA IMPROVEMENTS
MINIMUM CHANGE AREAS

Out-of-Town Peninsula / "The Pit"



Out-of-Town Peninsula / “The Pit”

PLAZA IMPROVEMENTS



HARVARD SQUARE DESIGN PROJECT

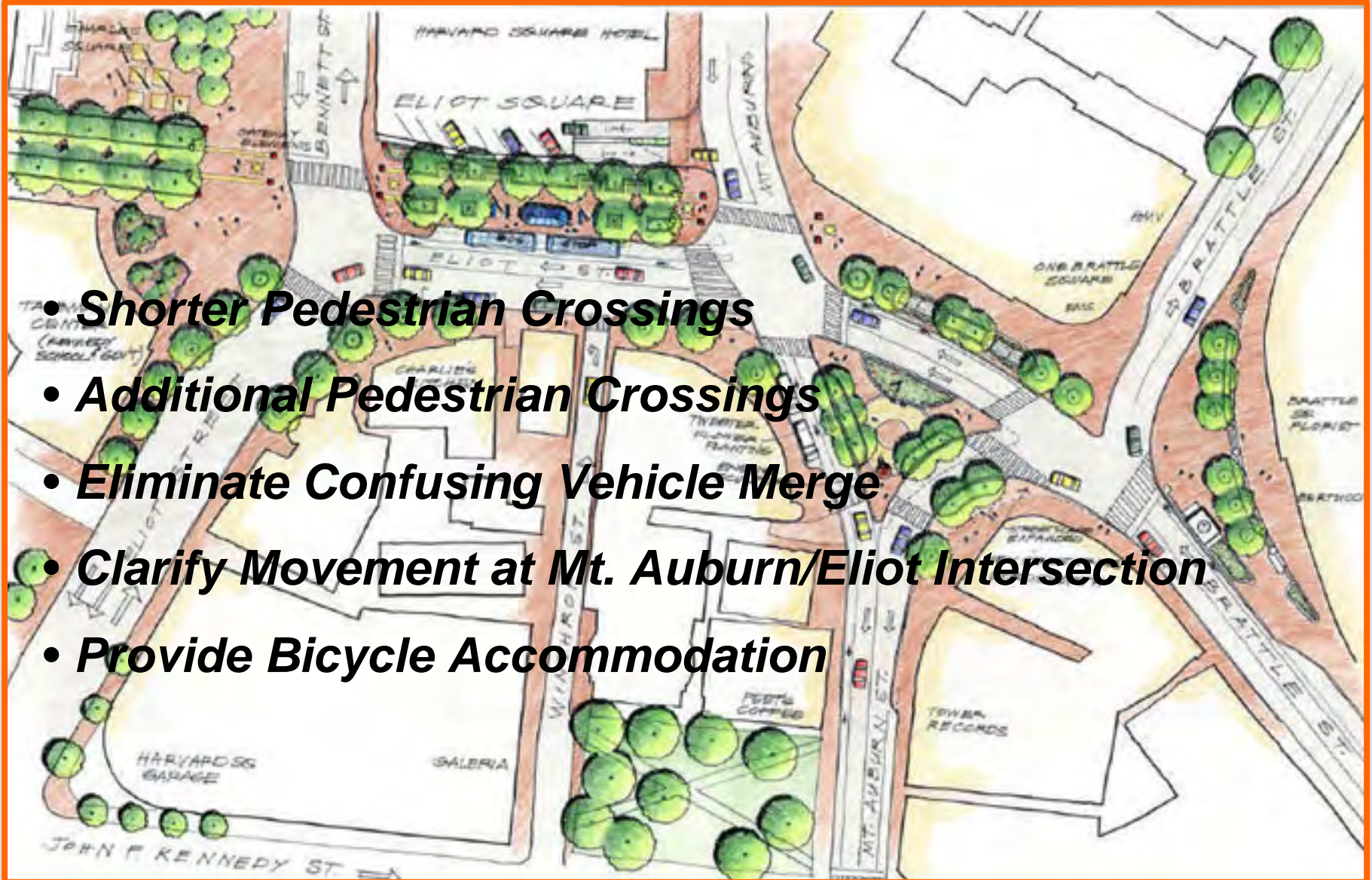
TAMS

City of Cambridge
June 20, 2003

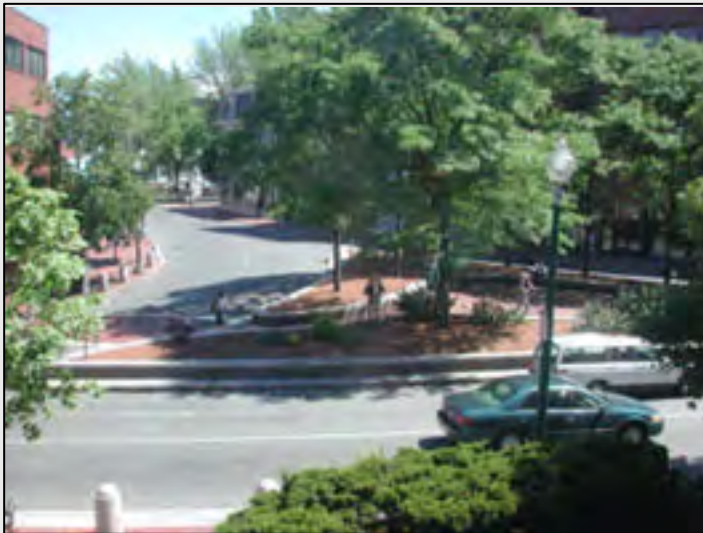
TRANSPORTATION IMPROVEMENTS

WORDSWORTH / ELIOT

- **Shorter Pedestrian Crossings**
- **Additional Pedestrian Crossings**
- **Eliminate Confusing Vehicle Merge**
- **Clarify Movement at Mt. Auburn/Eliot Intersection**
- **Provide Bicycle Accommodation**



PLAZA IMPROVEMENTS WORDSWORTH / ELIOT



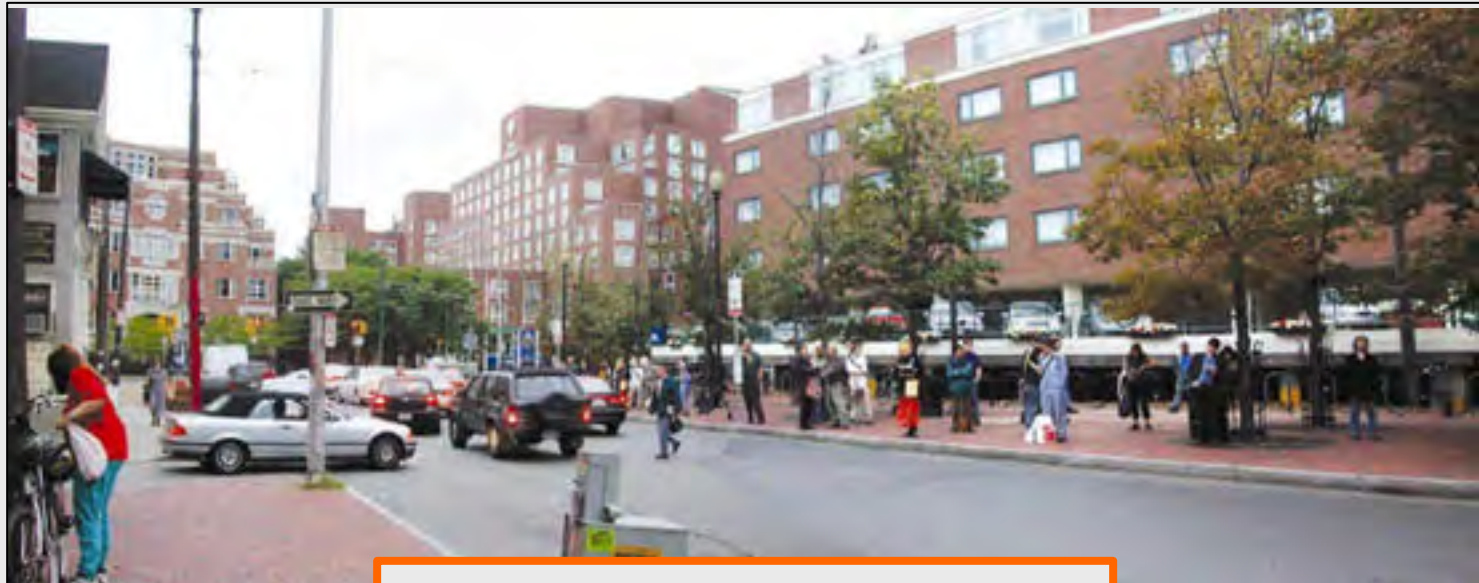
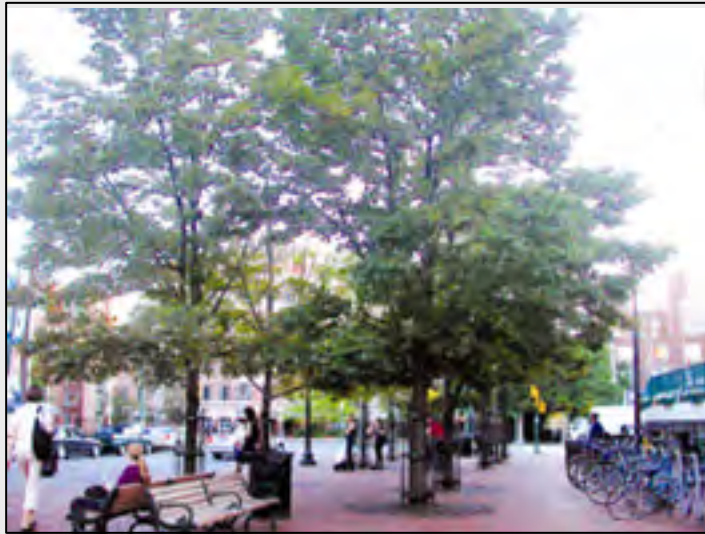
“Wordsworth” Triangle

PROPOSED IMPROVEMENTS WORDSWORTH TRIANGLE



PLAZA IMPROVEMENTS

WORDSWORTH / ELIOT



Eliot Square Bus Stop

PROPOSED IMPROVEMENTS

ELIOT SQUARE



PLAZA IMPROVEMENTS



HARVARD SQUARE DESIGN PROJECT

TAMS

City of Cambridge
June 20, 2002

PLAZA IMPROVEMENTS

LAMPOON PLAZA



- *Lack of Crosswalks*
- *Expanse of Pavement*
- *Long Crossings*

PROPOSED IMPROVEMENTS

LAMPOON PLAZA



PROPOSED IMPROVEMENTS LAMPOON PLAZA



SMALL GROUP DISCUSSIONS

