

# **Materials: Roadway and Sidewalk**

# Roadway: Crosswalks



**Standard Zebra Crosswalks**

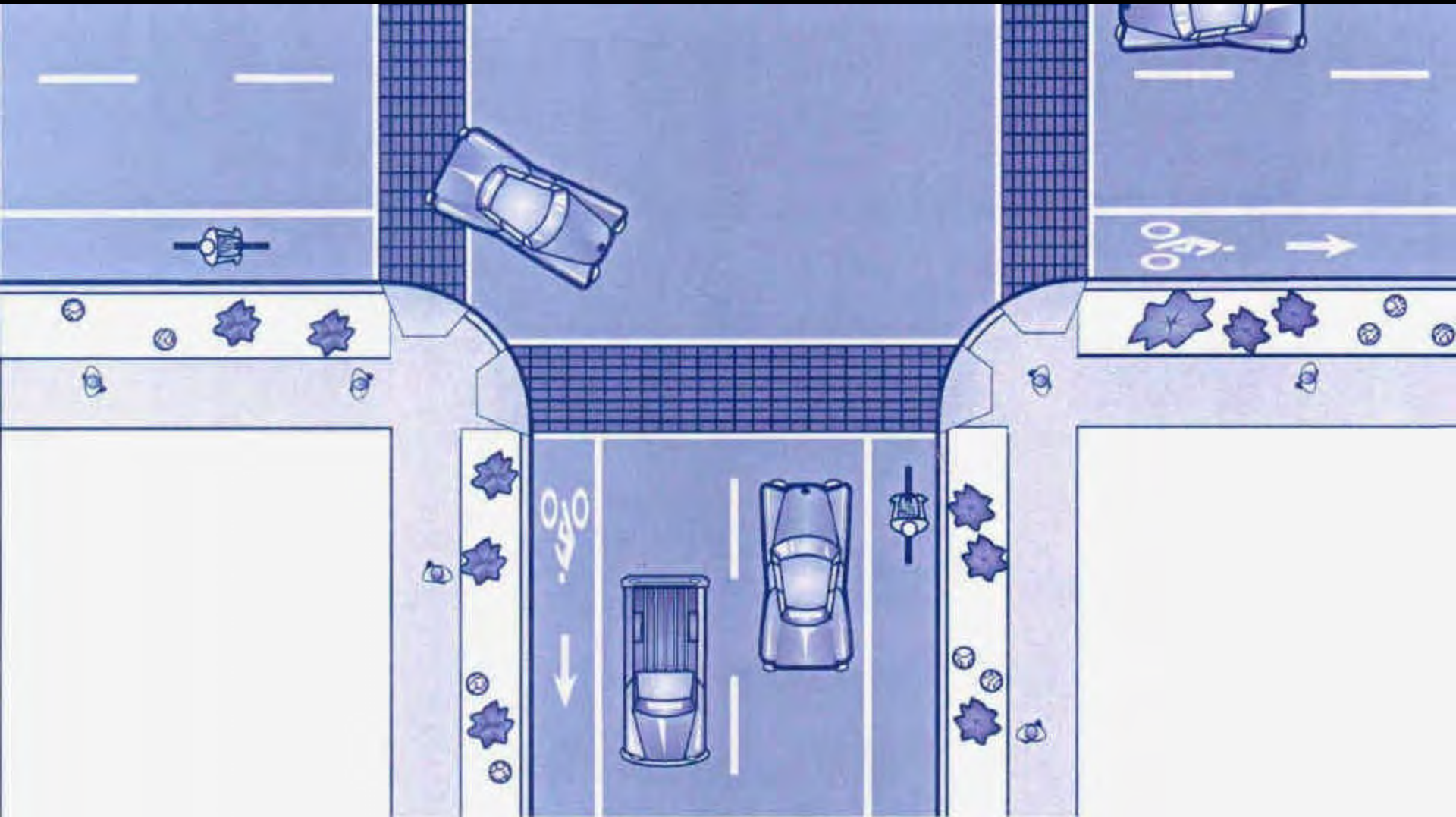




**Standard Zebra Crosswalks**

# Textured Crosswalks

# Textured crosswalks: Theory – more visible. Reality?







**Bird's eye perspective - before**



**Bird's eye perspective - proposed**





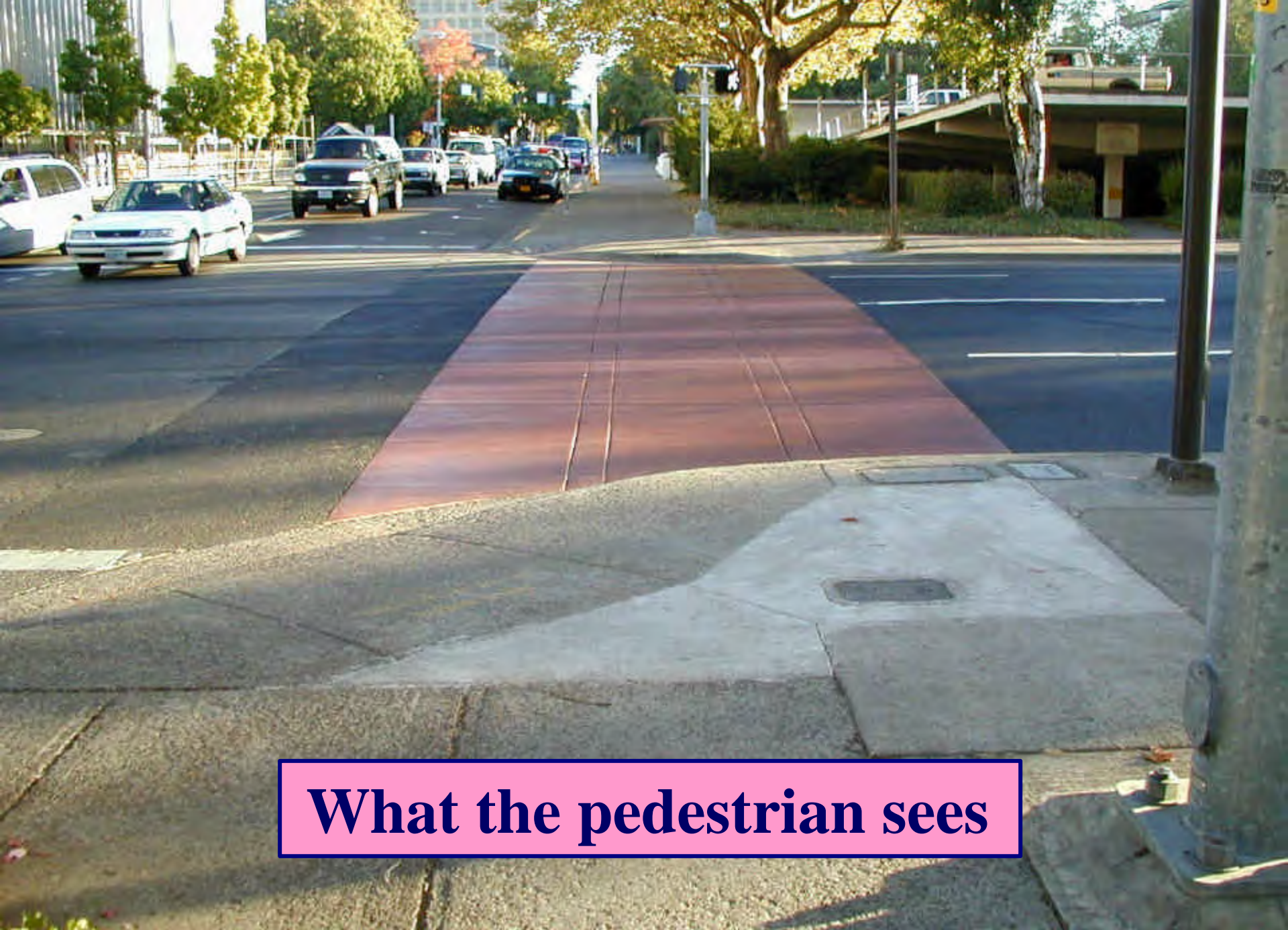
**What the pedestrian sees**



A street scene from a driver's perspective. The road is paved and has yellow lane markings. On the right side of the road, a red car is partially visible. The street is lined with trees and houses. In the distance, a white car is driving away. The sky is overcast.

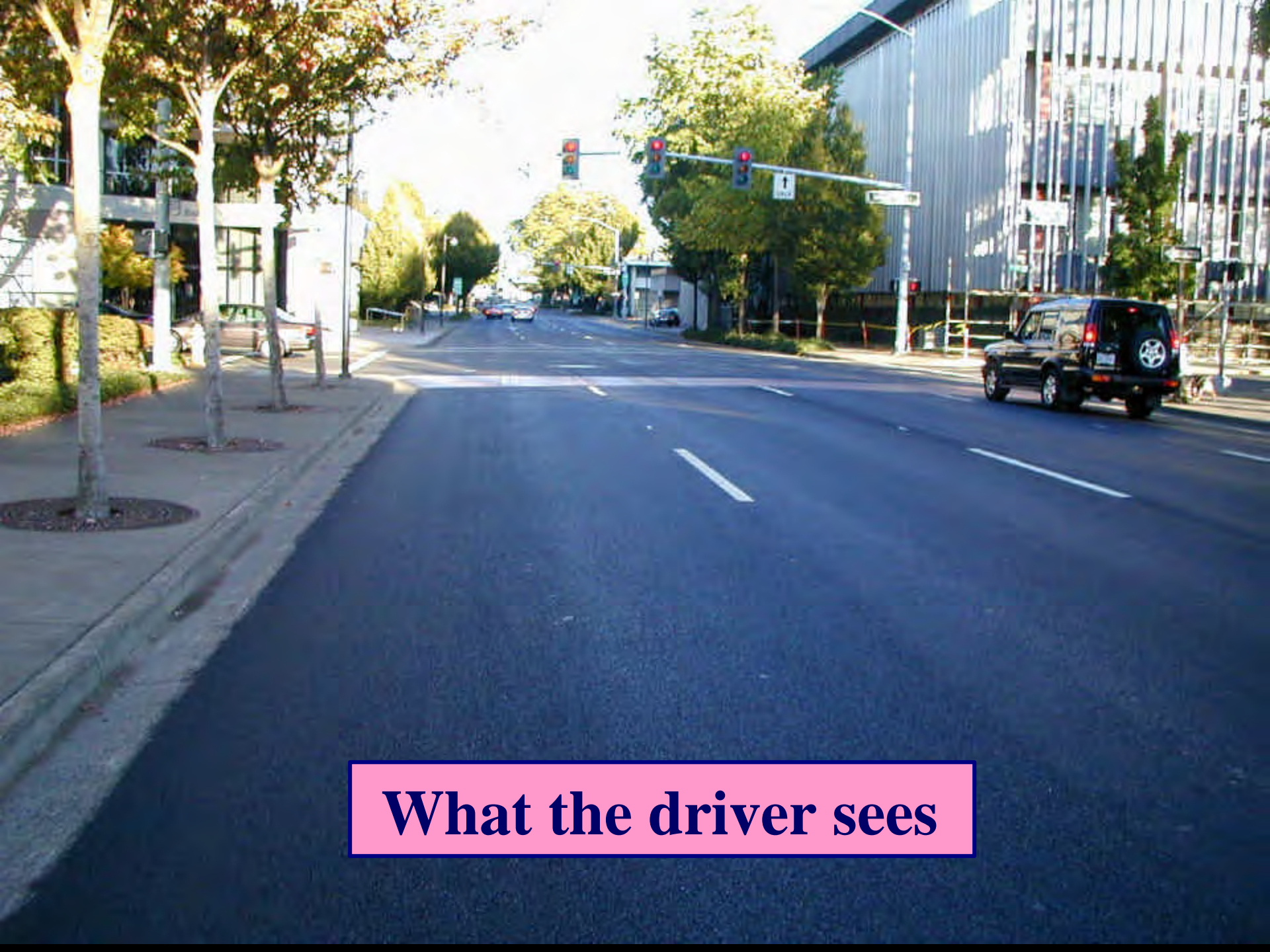
**What the driver sees**





**What the pedestrian sees**





**What the driver sees**





**Textured brick complemented with stripes**



**What the driver sees**





**What the driver sees**



**Brick crosswalks are prone to failure**





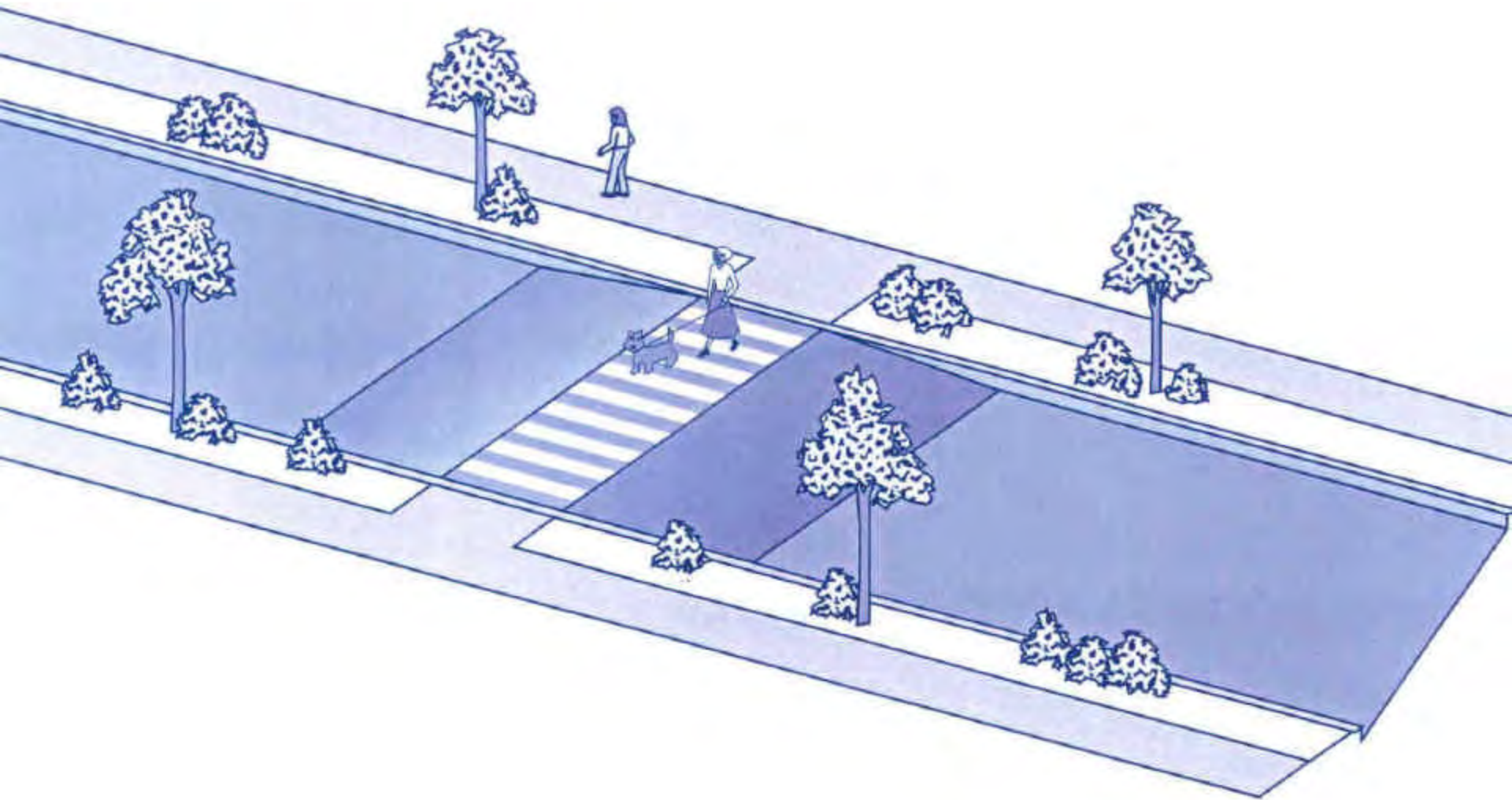








# Raised crosswalk



**A crossing + traffic calming**





**Columbia Street Raised Crosswalk  
paint enhances visibility**

# Roadway Materials

**Bus Stops / Taxi Zones /  
Loading Zones**



# Roadway Materials



Cobbles



# Roadway Materials

Cobbles





# Roadway Materials

A high-resolution, close-up photograph of a cobblestone pavement. The stones are rectangular and arranged in a staggered, interlocking pattern. The color of the stones is a mix of grey, brown, and tan, with some darker spots and lighter areas, suggesting weathering and possibly different stone types or treatments. The lighting is even, highlighting the texture of the stone surfaces and the recessed joints between them.

Cobbles



# Roadway Materials

A photograph of a paved area, likely a sidewalk or driveway, featuring a mix of red and tan concrete pavers. The pavers are arranged in a herringbone pattern. A significant portion of the pavers is covered with a layer of snow, particularly in the center and towards the right. In the background, a red fire hydrant is visible on the right side, and a storm drain is on the left. The overall scene suggests a winter or early spring setting.

Concrete Pavers



# Sidewalk Materials

# Sidewalk Materials

Granite Edging





# Sidewalk Materials



## Curb Ramps



# Sidewalk Materials

Asphalt





# Sidewalk Materials

**Asphalt**



# Sidewalk Materials



Concrete



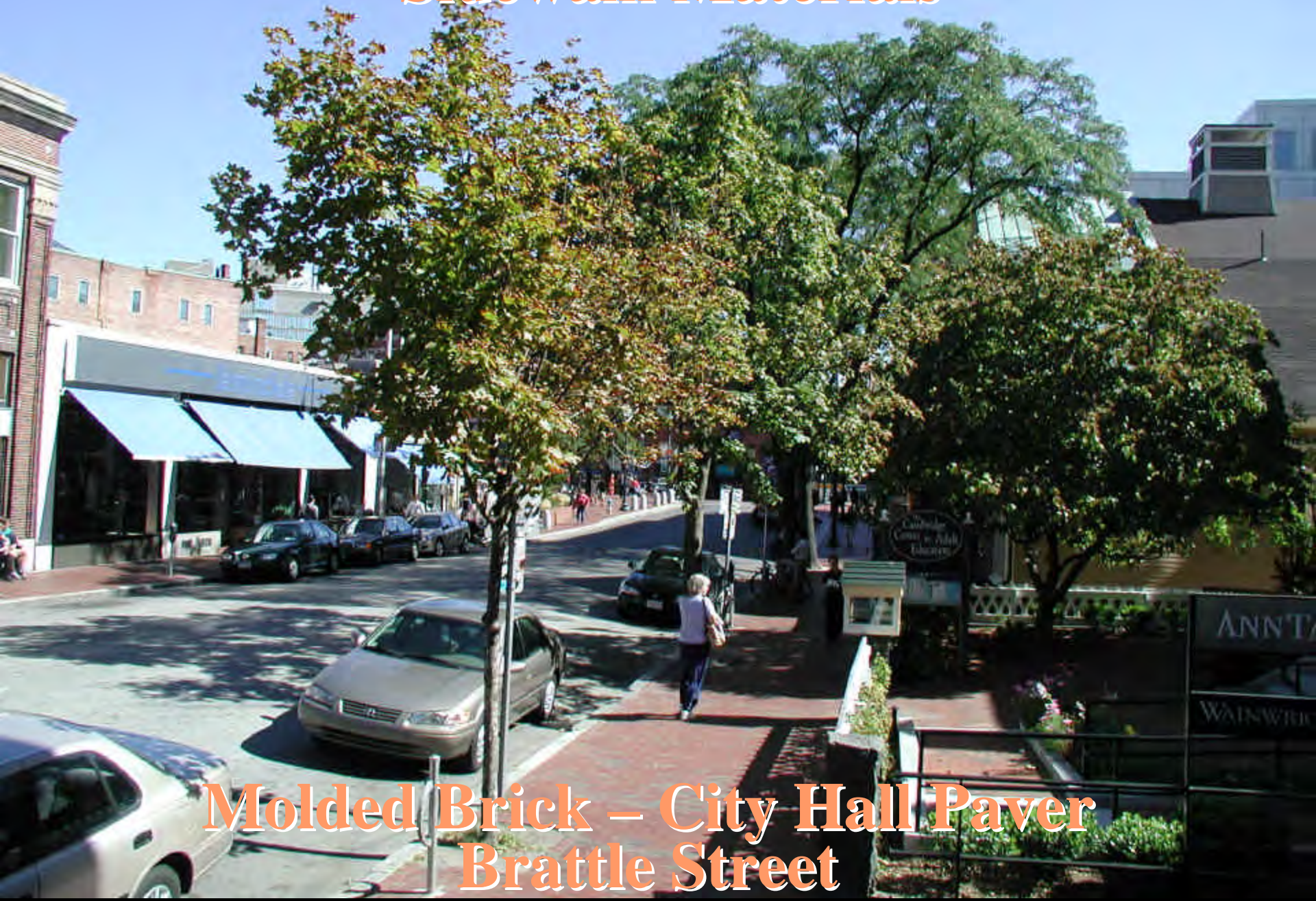
# Sidewalk Materials



**Molded Brick –  
City Hall Paver**



# Sidewalk Materials



**Molded Brick – City Hall Paver  
Brattle Street**



# Sidewalk Materials

**Molded Brick – City Hall Paver**



# Sidewalk Materials

Molded Brick – City Hall Paver  
JFK Street



# Sidewalk Materials

**Wire Cut Brick**  
**DeWolfe Street**





# Sidewalk Materials

Wire Cut Brick  
Charles Square Hotel



# Sidewalk Materials



Vibration Free Zone  
Dawes Island



# Sidewalk Materials

Granite Edging









