

# SITE PHOTOS — BIRCH GROVE FOUNTAIN



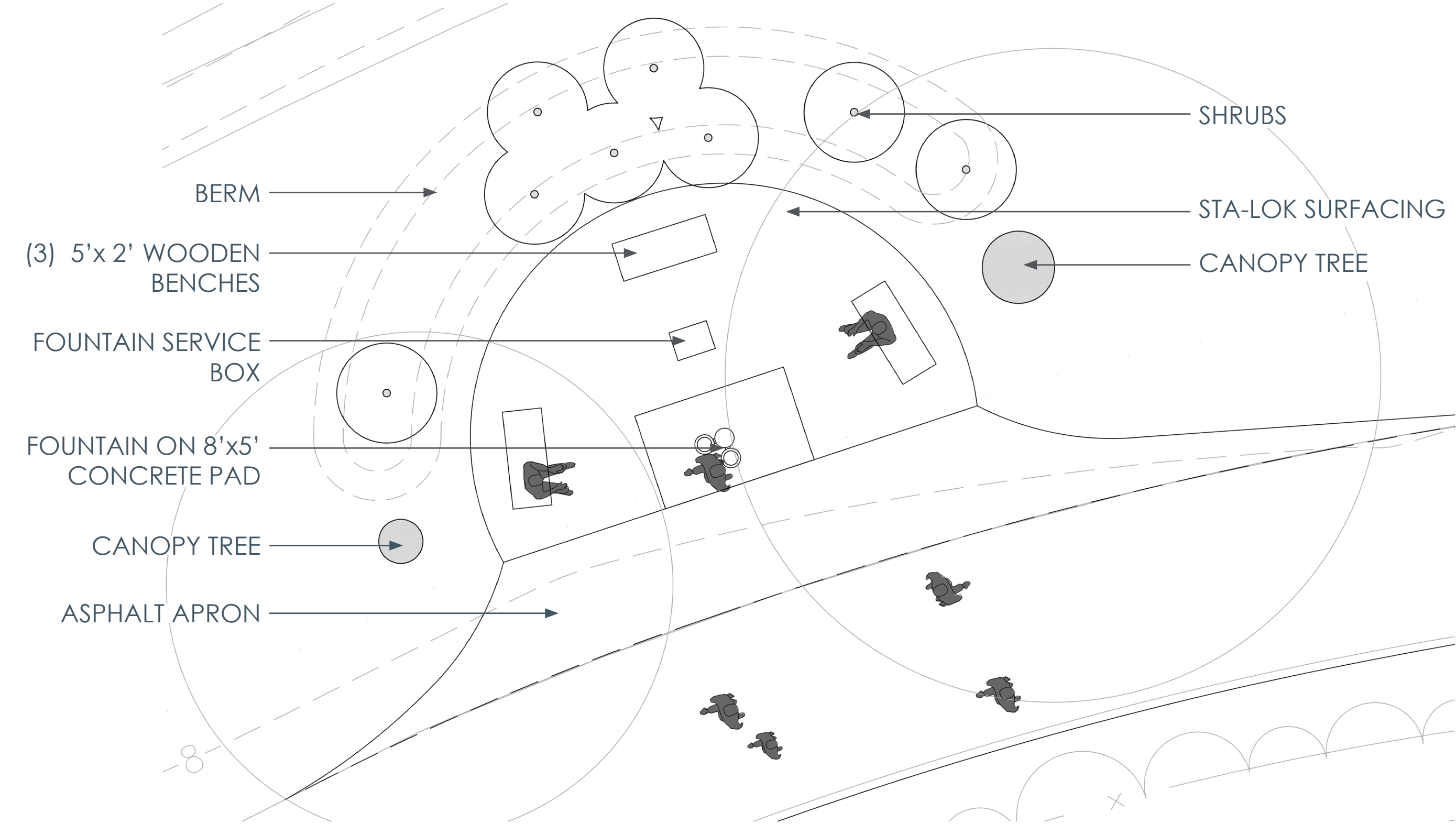
VIEW OF SEATING AREA & FOUNTAIN FROM FAR SIDE OF PERIMETER ROAD



FOUNTAIN & SERVICE BOX



# EXISTING CONDITIONS



IMPERVIOUS AREA: 570 SF



# ORIGINAL CONCEPT PLAN

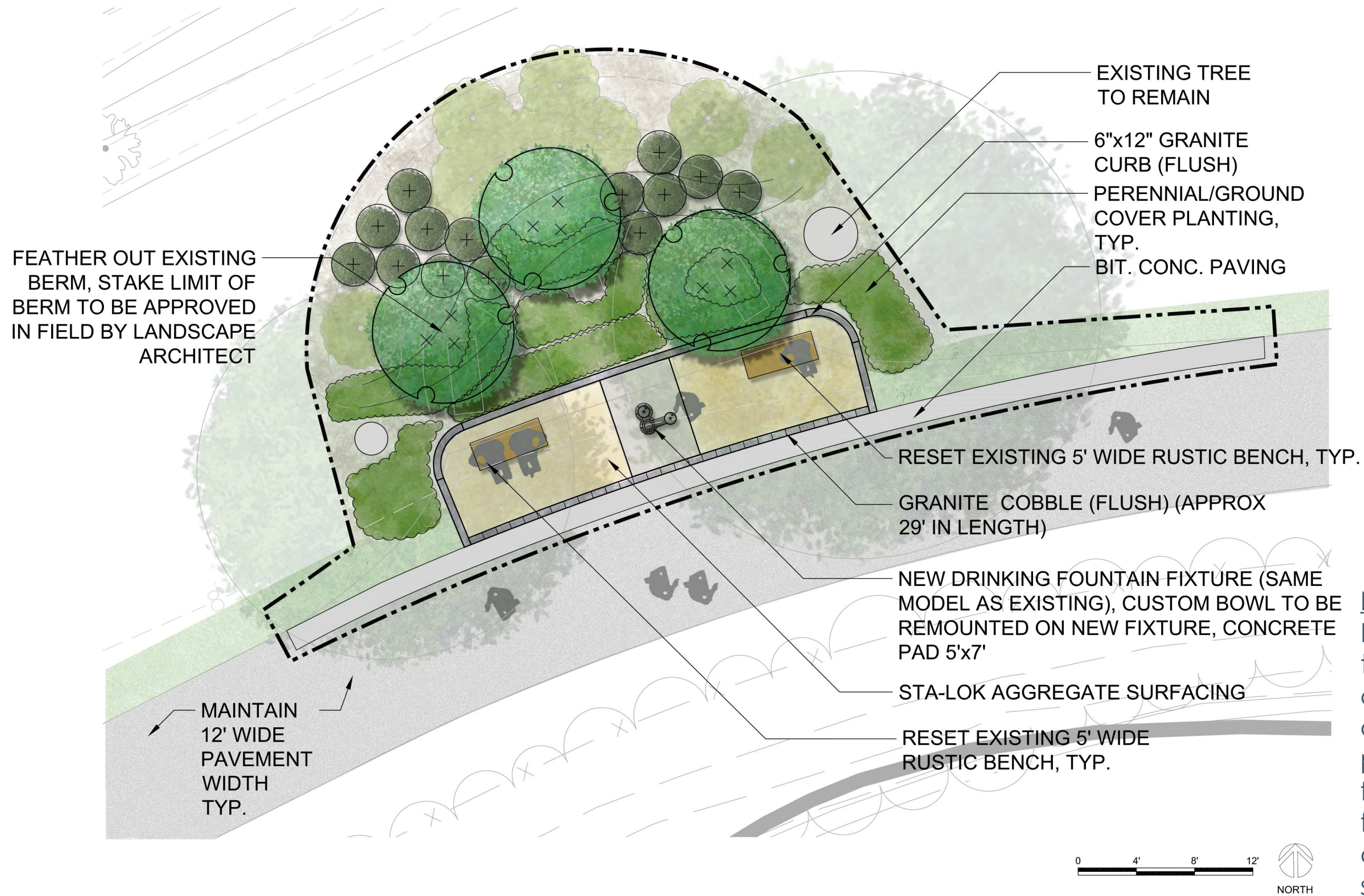


EXISTING IMPERVIOUS AREA: 570 SF  
PROPOSED IMPERVIOUS AREA: 200 SF





# REVISED CONCEPT PLAN



**NOTE:**  
Revisions from the previous concept include a larger fountain pad, shifting the fountain away from the path, and a slightly deeper seating area.

EXISTING IMPERVIOUS AREA: 570 SF  
PROPOSED IMPERVIOUS AREA: 240 SF



# WOODLAND RESTORATION PLANTINGS

## UNDERSTORY TREES



*Cornus florida*  
(flowering dogwood)



*Hamamelis virginiana*  
(witch hazel)

## SHRUBS



*Viburnum acerifolium*  
(maple-leaf viburnum)



*Cornus racemosa*  
(grey dogwood)



*Lindera benzoin*  
(spicebush)

## GROUNDCOVER



*Asarum canadense*  
(wild ginger)



*Cornus canadensis*  
(bunchberry)



*Maianthemum racemosum*  
(false Solomon's seal)



*Carex pensylvanica*  
(Pennsylvania sedge)



*Dennstaedtia punctilobula*  
(hayscented fern)



*Euryba divaricata*  
(white wood aster)



*Tiarella cordifolia*  
(foamflower)



*Dryopteris marginalis*  
(marginal wood fern)