

Recycling

Trash

Paper & Cardboard

Place in a paper bag or separate bin.

Staples, paper clips, spirals, windows on envelopes, and the plastic spout on cartons are OK.

- ✓ **Cardboard**
- ✓ **Magazines & Newspapers**
- ✓ **Phone Books & Junk Mail**
- ✓ **Cereal Boxes, Paper Towel Rolls**
- ✓ **Milk / Juice Cartons**
- ✓ **Soft Cover Books** (no hard covers)
- ✓ **All Office Paper** (no blueprints)
- ✓ **Shredded Paper** (in a stapled & labeled paper bag)
- ✗ **No Plastic Bags**
- ✗ **No Pizza Boxes**



Cardboard must be flat and no larger than 3 feet by 3 feet.

File cleanout or lots of moving boxes?
Bring to the Recycling Center or call to borrow a "toter".

Bottles & Cans

Place rinsed containers loose in your bin. Keep containers separate from papers. Remove caps and lids.

Do not pour grease or oil down any drain.

- ✓ **Aluminum** (pie plates, trays & foil)
- ✓ **Empty Aerosol Cans** (no spray paint or oil cans)
- ✓ **Glass Bottles & Jars** (any color)
- ✓ **Metal Cans** (tin, steel & aluminum)
- ✓ **Stiff Plastic Containers** (must be marked #1-7, plant pots OK)



- ✗ **No Plastic Bags**
- ✗ **No Styrofoam**
- ✗ **No Liquids or Food Residue**
- ✗ **No Dishes or Glasses**
- ✗ **No Light Bulbs**
- ✗ **No Windows**
- ✗ **No Unmarked Plastics**
- ✗ **No Clothes Hangers**



Leaf & Yard Waste

Place loose in barrels with City stickers facing the street, or in paper leaf bags.

Collection begins the 1st FULL week in April and ends the 2nd FULL week in December.

Weather permitting, **Christmas trees** are generally collected for recycling for 2 weeks beginning the 1st FULL week after the holiday.

- ✓ **Leaves, Grass & Plants**
- ✓ **Thin Shrub Prunings & Twigs** (no more than 1 inch in diameter or 3 feet in length)
- ✓ **Thick Limbs** (3 tied bundles, 3 ft x 3ft)

- ✗ **No Plastic Bags**
- ✗ **No Food**
- ✗ **No Trash**



Recycling is mandatory in Cambridge, and easy! You can reduce your trash by at least 50% to help protect the environment and save the City money.

Trash, recycling and yard waste must be placed at the curb by 7am on collection day or after 6pm the night before.

During holiday weeks, collection is delayed one day.

Trash Preparation

1. Trash barrels / bags cannot exceed 50 gallons or 50 pounds.
2. No trash in boxes. Flatten and cut cardboard to 3 feet by 3 feet for recycling.
3. Trash must be in barrels with a tight lid when stored on private property and when set at the curb.
4. No trash in bags at the curb the night before collection. Only heavy duty bags accepted. No thin grocery or kitchen bags.



Large Items

Schedule pickup and purchase stickers in advance. \$20, \$15 for seniors. No commercial or industrial items.

- Air Conditioners
- Clothes Washers & Dryers
- Copiers & Printers (more than 40 lbs)
- Dehumidifiers
- Dishwashers
- Exercise Equipment & Bicycles
- Lawnmowers (remove gas)
- Metal Filing Cabinets & Desks
- Radiators
- Refrigerators & Freezers (remove door per state law)
- Snow Blowers (remove gas)
- Stoves (gas & electric)
- Trash Compactors
- Water Coolers & Heaters
- TVs & Computer Monitors (over 20" diagonal length)

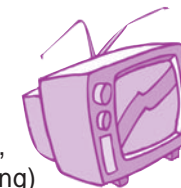
*No charge for underlined items, but please call ahead.

The City Will Pick Up

- **Electronics** (microwaves, stereos, box fans for recycling)

1 Per Week:

- **Computers & TVs** (20" or less diagonal length with hard drive, keyboard, mouse, and small printer or fax for recycling)
- **Furniture, Mattress & Boxspring** (or post at craigslist.org)
- **Toilet & Sink**



3 Tied Bundles Per Week:

- **Carpet** (3 ft x 3 ft)
- **Lumber / Tree Limbs** (3 ft x 3 ft, no nails)

Call a Private Hauler

- **Construction & Demolition Debris** (Including bathtubs, cabinets, pipes, sawdust, drywall, windows, etc. Contractors responsible for disposal. Donate materials in good condition: www.bostonbmc.org or www.bostonrestore.org)
- **Property Cleanouts**
- **Automotive Parts**
- **Boilers & Furnaces**
- **Tree Stumps, Rocks, Soil, Dirt & Sand**

Fines for Violations

- ✗ Trash is not prepared correctly
- ✗ Large items do not have a sticker
- ✗ Trash or recycling is set out too early
- ✗ Empty containers or rejected items are not removed by 6 pm day of pickup
- ✗ No recycling participation

See INSIDE for curbside recycling and trash rules...



Toters are available to 6+ unit multi-family residential buildings. These 96-gallon bins have wheels and lids. To request delivery, call or fill out the toter request form on our website. Toters are labeled for containers or papers/cardboard.



Residents can use any 32-gallon barrel for recycling glass, metal and plastic containers or yard waste. Face sticker to street when using barrel for recycling. Call DPW to request stickers.



Bins are only available to residential buildings with 6 units or less. 2 bins per household.

Recycling Bins

Curbside Recycling



City of Cambridge
Department of Public Works
147 Hampshire Street

Recycling and Trash Regulations for Residents

updated Fall 2009



DPW Business Hours:		Recycling Center Hours:	
Mon	8:30am - 8pm	Tues	4pm - 7:30pm
Tues-Thurs	8:30am - 5pm	Thurs	4pm - 7:30pm
Fri	8:30am - Noon	Sat	9am - 4pm

www.cambridgema.gov/recycle
617.349.4800 TTY 617.349.4005

Finished compost is available to residents in small quantities April through October.

- ### What to Bring
- Batteries (non-alkaline only)
 - Books (hard and soft covers, binders OK)
 - Cans & Bottles
 - Cardboard & Paper
 - Cell Phones
 - Clothing (in a plastic bag)
 - Flags
 - Food Waste (no liquids or grease)
 - Mercury Items (fluorescent bulbs, thermometers, thermostats)
 - Metal Items (no sealed containers)
 - Motor Oil
 - Packaging Peanuts (no block Styrofoam)
 - Plastic Bags (bubble wrap OK)
 - Plastics, Large Items (laundry baskets, crates, etc.)
 - Small Appliances & Electronics (no TVs, monitors, big appliances)
 - Toner / Ink Cartridges

Located at 147 Hampshire Street near Inman Square, the Center is in the back right corner of the DPW yard.

Open Hours

Tuesday & Thursday 4pm-7:30pm
Saturday 9am-4pm

Proof of residency is required upon request. The DPW yard is closed to the public at all other times.

Recycling Center

did you know about the City's...



Visit the recycling website!
Check out our A-Z "Get Rid of It Right" list, with details on how to recycle, donate or dispose of just about anything. Visit www.cambridgema.gov/recycle and click on Residents.



Exemptions:
If you have a disability that makes it difficult for you to recycle or set your trash out after 6pm, call the Commission for Persons with Disabilities at 617.349.4692 for an exemption application. Trash bags are not allowed the night before collection.

Printed on 100% post-consumer recycled paper with vegetable-based inks.



147 Hampshire Street
Cambridge, MA 02139
617.349.4800
Info Line 617.349.4005
www.cambridgema.gov/recycle

ECRWSS
RESIDENTIAL CUSTOMERS
CAMBRIDGE, MA

Available in: español portugués kreyòl 中文

Empty into the brown totes on wheels. No yard waste, liquids, grease, pet/human waste, diapers, plastic, glass, metal or Styrofoam. Collect scraps (vegetable & fruit peelings, coffee grounds, bread, etc.) in a paper bag or reusable container like a kitty litter bucket. Wrap meat and fish in newspaper to reduce odors.

3. Drop off Food Waste

Residents may bring food waste and food-soiled paper to the Recycling Center during open hours. Perfect for apartment dwellers, worm composting is easy with red worms. Use a plastic tub to recycle food scraps and make vermicompost.

2. Compost Indoors

For only \$50, buy a rodent-resistant compost bin from DPW during business hours or when the Recycling Center is open. Roughly 30" square, the bin holds over 11 cubic feet of material. Produce compost in 6-12 months!

1. Compost Outdoors

Composting is nature's way of recycling and is one of the best things you can do to reduce waste and protect the climate. Turn food and yard waste back into soil for outdoor gardens or indoor plants. Visit our website for more information on each option.

Compost Organic Waste

Hazardous Waste Days

Never pour hazardous products down catchbasins, drains, or place in the trash. Bring items to the next collection day:



October 3, April 24 and June 19. Each event is a Saturday from 9am-1pm at 450 Concord Ave. Proof of residency required. No commercial or laboratory items accepted.

To Ensure Safety

Never mix chemicals. Sort and pack items separately. Do not place in trash bags. Keep in original labeled containers, tighten caps. Keep children and pets away from toxic items. Never smoke while handling items.

Report illegal dumping into catch basins or dirty-looking discharges from outfalls to DPW.

YES	NO
✓ Batteries: Vehicle & <u>Non-alkaline</u>	✗ Alkaline Batteries (OK in trash)
✓ Chemicals	✗ Ammunition, Fireworks, etc. (call 617.349.3300)
✓ Car Tires (4 per car)	✗ Asbestos (requires proper disposal)
✓ Fuels, <u>Motor Oil</u> & Antifreeze	✗ Bleach & Ammonia
✓ <u>Fluorescent Bulbs</u> (accepted at local hardware stores)	✗ Compressed Gas Cylinders
✓ <u>Mercury Items</u> (thermometers & thermostats)	✗ Computers / TVs
✓ Paints (oil & latex)	✗ Empty Aerosol Cans (recycle curbside)
✓ Propane Tanks (20 lbs or less)	✗ Fire Extinguishers
	✗ Infectious, Biological or Radioactive Waste
	✗ Medicine (discard pills & recycle bottle)
	✗ Smoke Detectors (OK in trash)
	✗ Syringes (for info call 617.665.3848)

*Underlined items accepted at Recycling Center.

Paint
Dried out latex paint is accepted for trash pickup, lids off. Let evaporate outside or add kitty litter.