

MESSAGE FROM THE



City Manager

I am pleased to announce that Cambridge was again chosen by America's Promise as one of the *100 Best Communities for Youth*. We are the only city in New England to earn this honor for the fifth time. We recently dedicated the renovated Cambridge Rindge and Latin School and also launched the Cambridge Alert Network, which will enable us to relay important information to the community in a timely manner via email, text alerts and phone calls. Visit www.cambridgema.gov to learn more about this and other new features that will improve your interaction with the City, including **Cambridge iReport** to report issues related to basic City services, **Google Translate** to view the City's Website in several different languages, and a new City Facebook page.

"Like" Cambridge on Facebook



The City of Cambridge recently launched a Facebook page to further highlight certain items already posted on our Website. Visit www.cambridgema.gov to link to the City's Official Facebook page as there are several existing Cambridge Facebook pages. You can also sign up for other City department Facebook pages, including Cambridge Arts Council, Cambridge Police Department and the Department of Public Works.



City and School officials at the dedication ceremony for the newly renovated Cambridge Rindge and Latin School. Photo by Phyllis Bretholtz.

Celebrate CRLS in 2011-12

Celebrate CRLS is a yearlong initiative designed to involve and engage the support of all constituencies—parents, students, staff, alumni, science and biotech and other local institutions, as well as the general community, in an extended and dynamic celebration of the newly renovated Cambridge Rindge and Latin School and its many achievements. Activities will honor current and former students and staff, welcome back alumni for both social and supportive events, recognize the critical role that parents play in school life and invite the Cambridge community into the school for an "up close and personal" introduction to CRLS. For more information, visit www.celebratecrls.org.

Sign Up for Cambridge Alert Network for Emergency & Important Community Alerts

The City recently launched the Cambridge Alert Network, a notification system that relays important information in a timely manner via phone, text and email. The Network consists of three services: CodeRED, CitizenObserver and Cambridge E-Line. CodeRED is used to send emergency notifications to subscribers via email, text and phone calls. CodeRED will be used for emergencies, snow parking bans or significant service disruptions. Cambridge land lines are automatically registered, but citizens are encouraged to register their cell phone and email. Citizens who signed up last winter for snow emergency alerts via Cambridge E-Line have been moved to CodeRED.

CAMBRIDGE ALERT NETWORK

CodeRED • CitizenObserver • Cambridge E-Line

CitizenObserver is used by Cambridge Police to send email and text alerts relating to crime and also neighborhood specific alerts. Cambridge E-Line is used to send general City information, street cleaning reminders and holiday reminders for trash/recycling pick-up via email and text. Visit www.CambridgeMA.gov/AlertNetwork to register or call: CodeRed, (617-349-9490), Citizen Observer (617-349-3237), E-Line (617-349-4870).

Community Development



Elm Place, a new development of 19 affordable rental units and retail space.

Preserving Affordability in Cambridge

The City has been working to protect and extend affordability in privately-owned housing where affordability restrictions on the properties are at risk of expiring in the coming years. These so-called “expiring use” properties have underlying affordability requirements stemming from below-market loans, loan guarantees, or other agreements which assisted in their construction many years ago. Expiring affordability agreements could potentially affect thousands of affordable units in Massachusetts.

In Cambridge, 10 privately-owned properties (containing approximately 1,100 affordable units) with affordability restrictions were due to expire in the next 10 years. In recent months, the City has successfully preserved permanent affordability at two of these properties.

North Mass Avenue Improvement Study

Massachusetts Avenue, from Porter Square to the Arlington line, known as North Mass. Ave., is a primary transportation route, a gateway into the city, and the heart of the surrounding North Cambridge neighborhood. This one-mile corridor consists of a variety of land uses including retail establishments, office and commercial buildings, multifamily residential

With Community Preservation Act (CPA) funding committed by the Cambridge Affordable Housing Trust, Homeowners Rehab, Inc. purchased and preserved affordability at Inman Square Apartments and CAST II Apartments, containing a total of 125 units. Renovations are now under way in each building. CPA funds have also been committed to refinance, renovate and preserve affordability of 122 units for seniors on Franklin Street.

With more than 950 units still facing expiring affordability restrictions, preservation will remain a priority. The City will continue to work with owners, tenants, non-profit housing partners, the Cambridge Housing Authority and other public lenders to ensure the continued availability of these important housing resources for low and moderate income residents.

developments, one and two family houses, historic structures, and open space. To maintain and enhance North Mass. Ave. as an active, neighborhood-focused, pedestrian-friendly corridor, it is essential to balance the protection of existing qualities with the potential for redevelopment as the Avenue evolves.

In 2010, the Community Development Department began a study to explore ways to strengthen the character of

Elm Place on Cambridge Street

Construction of Elm Place, a new development of 19 affordable rental units above ground floor retail space, was completed over the summer by Just A Start, a nonprofit housing provider in Cambridge. The property, once a hardware store and then an antiques mall, was sitting vacant in 2007 when it was purchased by Just A Start.

Using funds from the Community Preservation Act and other public and private sources, Just A Start set out to design a building that would use the latest innovations in green building technology while integrating into the existing fabric of Cambridge Street. Built to LEED Gold standards, the building features super-efficient windows and insulation and a photovoltaic rooftop array to provide common area electricity. The bright, spacious apartments include Energy Star appliances and materials designed to eliminate toxic chemicals in the atmosphere.

All 19 rental units, comprising a mix of unit sizes, are now occupied. The retail space on Cambridge Street will be home to a local bike shop, providing a service to local residents and enlivening this section of Cambridge Street with an independent small business that needed affordable, accessible space to stay in Cambridge. The completion of Elm Place ensures that affordable housing remains an important part of the mix in this vibrant neighborhood bordering Inman Square.

North Mass. Ave. with the goal of developing recommendations for zoning and urban design, streetscape improvements and enhancement of the retail environment.

Well attended community meetings and input from residents, business owners and City staff have led to a set of draft zoning and non-zoning recommendations that include maintaining ground floor retail, facilitating outdoor dining and improving existing public open space along the Avenue.

Recommendations will be finalized in late 2011. Additional information and materials are available at: www.cambridgema.gov/northmassave. To be included in future mailings please contact Taha Jennings at 617-349-4603 or tjennings@cambridgema.gov.

Kendall Square: Been there lately?

With a growing life sciences sector, a host of knowledge-based start-ups, and new housing opportunities, Kendall Square is emerging as an energetic mixed use gateway to all that Cambridge has to offer. Despite a challenging economy, major employers such as Biogen, Pfizer and Novartis have chosen to expand in the Kendall area to take advantage of the creative synergy that resides there. Along with the activity uptick has come a new and diverse group of restaurants, cafes, shops and services including Abigail's, Area Four, Bosse City Club & Spa, Catalyst Restaurant, Charles River Canoe & Kayak, Firebrand Saints, Meadhall, Redbones Rib Shack, Voltage Coffee & Art, and Xylem Gift Shop. As it moves beyond the limits of a 9-to-5 commercial center, Kendall Square is well worth a visit, if you're not already a regular!

Catching Up with K2C2



In March, the City began work on the Kendall Square / Central Square Planning Study (K2C2), a multidisciplinary study to develop a vision for the two squares and the transition area connecting them. Focusing on land use planning and urban design, retail, housing, market analysis, and transportation planning, the study process will produce recommendations, including specific actionable steps to achieve the vision.

A Kendall Square Advisory Committee and a Central Square Advisory Committee, appointed by the City Manager, are guiding the work of the staff and its consultants, Goody Clancy. In addition to committee meetings, a series of public meetings is being held to solicit input from the broader community.

Emerging goals for Kendall Square and the transition area include enhancing neighborhood identity and sense of place; creating a more active and extensive public realm; attaining the right mix of land use/activities; improving transportation choices; expanding the amount and range of housing; expanding retail choices; sustaining Kendall's strong innovation culture; and making Kendall a global sustainability leader. Priorities for Central Square that were identified in a June 2011 public charrette include the amount and diversity of retail; housing; public open space; arts, culture and identity; and balancing the needs of pedestrians, cyclists, transit users, and drivers.

The K2C2 Study is expected to conclude in Spring/Summer 2012. For more information, please check www2.cambridgema.gov/cdd/cp/zng/k2c2/ or contact Iram Farooq at ifarooq@cambridge.ma.gov.

The Best View in Town Came with the Meal!

This fall, Riverbend Park (Sunday closure of Memorial Drive) visitors discovered one more reason to make the Cambridge Riverfront their "go-to" spot for biking, walking, and gathering with friends—food trucks.

As an outgrowth of its riverfront planning study, which focused on fostering a more active and engaging waterfront environment with better connections to Cambridge neighborhoods, the City launched a pilot Riverfront Mobile Food Program, seeking applications from qualified operators to sell freshly-prepared food in designated locations



The pilot mobile food program brought a new amenity to fall Sundays by the Charles.

adjacent to riverfront parks. While the area draws residents and visitors alike, it is generally out of the range of local food service businesses.



Powering Up on EVs

The City of Cambridge is one of 25 communities selected by the state Department of Energy Re-

sources to pioneer electric vehicle (EV) public charging stations through a public-private funding partnership. With many new technologies and products coming on line, electric vehicles are generating much interest. The City is promoting their use in place of internal combustion vehicles because of their clean air and energy efficiency benefits, consistent with our climate protection goals.

Most EV owners will likely charge their cars overnight at home, but drivers using and considering EVs have concerns about running out of battery charge while away from home. The state pilot program is an experiment in providing some public charging stations that allow EV owners to charge their vehicles, should they need to, while out and about. Installation of these stations in Cambridge will also make it easier for the many drivers who do not have their own garage or driveway to switch to EV technology.

The grant will allow the City to install up to 12 stations, accommodating 24 vehicles, in publicly accessible locations throughout Cambridge. The stations are being provided by Coulomb Technologies and are expected to be in place by November 2011. Once operational, they can be located by visiting Coulomb's ChargePoint America map online: www.chargepointamerica.com.

First to participate were the Clover and Redbones food trucks. Already established in the community, both businesses were eager to explore this new opportunity to expand their customer base in a picture postcard location. Spaces were available to Cambridge-licensed and permitted mobile food operators on Sundays through October 2011. City staff will now evaluate the pilot initiative with an eye toward shaping future policy and programs for mobile food in Cambridge. For more information, visit www.cambridgema.gov/mobilefood.

Human Services



Cambridge Again Named One of 100 Best Communities for Youth

The efforts of Cambridge civic and community leaders were honored this fall when America's Promise Alliance named Cambridge one of the *Nation's 100 Best Communities for Young People*. Cambridge was among a very small number of communities nationally to receive the prestigious award for a fifth time.

The *100 Best* designation recognizes those communities that make youth a priority by implementing programs that help keep children in school and prepare them for college and the 21st century workforce.

"The City's unprecedented effort to provide summer jobs to almost 950 Cambridge teenagers and the collaboration between the City, non-profit agencies and businesses to provide unique private sector employment opportunities to additional youth show that we are committed to preparing our young people with 21st Century skills," said Mayor David P. Maher.

Another highlighted effort was Cambridge's **Baby University** program, modeled after the **Harlem Children's Zone's Baby College Program**, to begin with very young children to address the achievement gap. The program, which is a collaboration of 14 City and community entities, works primarily with low income families, offering workshops on brain development, literacy and health, as well as home visits and interactive playgroups, to help families ensure that their children enter school ready to learn. Over 75 families have been through the program, and most of them are continuing to participate in Baby University Alumni programming.

Cambridge was also recognized for its commitment to serving young people

with disabilities in its out of school time programs. More than 40 young people who spend their school day in specialized classrooms or specialized private schools are served in mainstream after school programs, including many children with autism.

The award also recognizes the partnership between the Cambridge Police Department and youth and human services workers which spawned a massive outreach campaign to bring information and resources into the community through a door to door campaign reaching over 1,800 households annually. The outreach efforts were coupled with community meetings or events to ensure that residents are encouraged to take advantage of services.

Ellen Semonoff, Assistant City Manager for Human Services, also reflected on the announcement. "The credit for our selection as one of America's 100 Best Communities for Young People really goes to the community and City programs which on a daily basis strive to meet the needs of our young people," Semonoff said.

Community Schools

Science, Technology, Engineering and Math have been a strong focus of Community School enrichment classes over its 40 year history. In addition to partnerships with The Science Club for Girls, MAD SCIENCE of Greater Boston and Greenfox Schools, due to a generous grant from Novartis, the Discovery Museums of Acton will present a new class at the Kennedy and Fletcher Maynard Community Schools entitled Science Explorers Club, with hands-on physical science for students grades 3-5.

Community Schools will also host Senior, Adult and Family Programs. With grants from Cambridge Community Foundation and Tufts Health Plan Foundation, and in partnership with the Council on Aging, we will be escorting seniors to a performance of the Boston Symphony Orchestra at Symphony Hall. Other funded projects for seniors and their "Vibrant Lifestyles" include production of an intergenerational cooking video, a morning craft program at a senior housing site and a senior prom/dinner/dance.



Let's Move with Summer Food

If you visited a City park this summer, you may have seen children and youth happily engaging in exercise before receiving a free lunch courtesy of the Summer Food Program of the City's Human Services Department (DHSP). Traditionally, the City has been able to provide free lunch to summer camps and in several City parks, but this is the first summer that the program linked fun and exercise with nutritious food for

children and youth under age 19. The program is part of the City's participation in *Let's Move*, an initiative created by First Lady Michelle Obama to help fight childhood obesity. Cities throughout the country have adopted the slogan and created activities to support healthy eating and exercise. DHSP contracted with Benkadi Drum & Dance Company of Cambridge to provide instructors for weekly events at Goldstar Mother's Park, Sennott Park, Greene-Rose Park, Danehy Park and Hoyt Field.

Programs included Zumba, Hip Hop, African Dance & Drum and Kalaripayattu, which is a form of South Indian martial arts. Between 60 and 100 participants could be found at each site engaging in healthy activities. The Recreation Department staff helped give out the free lunches and even led a mini field day engaging children in double dutch and hula hoop competitions. The number of children and youth receiving free lunch this summer significantly increased.



New recycling bin at Raymond Park.

Improved Recycling Program for Cambridge Parks

Since the introduction of single stream curbside recycling in the fall of 2010, Cambridge residents have recycled 14% more tons than they did the prior year. By recycling more paper, cardboard and bottles and cans, residents have helped save the City up to \$75 for every ton that is diverted from the trash.

With these savings, the Department of Public Works has been able to install new recycling bins at a number of Cambridge parks, including Donnelly Field, Sennott Park, Raymond Park, Hoyt Field, Russell / Comeau Field, Rindge Field, Lindstrom Field, Tobin Field, Ahern Field, Clement Morgan Park, the Cambridge Common and soon at the Joan Lorentz Park. These parks were selected since they are used frequently for softball, soccer, basketball and football. Recycling bins were already in place at other Cambridge parks including Danehy Park, Riverside Park, Winthrop Park and at the Fresh Pond path. These new bins will be emptied year-round by Metro Pedal Power, using their emissions-free pedal trucks.

Show your support for recycling in Cambridge, take the 50% pledge today at www.cambridgema.gov/recycle and get a free sticker. Thank you for your continued commitment to recycling. A little effort makes a big difference.

Nine City and School Buildings Receive Energy Efficient Upgrades

This fall, the City completed another round of projects designed to reduce energy use and costs. Using \$283,000 in state Green Community grant funds and more than \$150,000 in subsidies from NSTAR, energy efficient lighting and occupancy sensors were installed

at the Morse School, the Field House and Media Center/Solomon Garage at Cambridge Rindge and Latin High School and three buildings at the Public Works facility on Hampshire Street. In addition, the Haggerty School and the Frisoli and Area IV Youth Centers received energy-saving improvements to their heating, cooling and ventilation systems. Together, these projects are

expected to save enough electricity and natural gas to avoid \$100,000 in energy costs and prevent 585,000 pounds of carbon dioxide from being emitted, the equivalent of taking 52 cars off the road. The buildings' energy use will continue to be monitored as part of the City's Green Community commitment to reduce energy use by 20% from its FY08 baseline.

Let's All Dig In and Dig Out- Ice and Snow-Free Sidewalks are Everyone's Responsibility

Snow Emergency Parking Bans

With winter just around the corner, here are a few important reminders regarding snow emergency parking bans and the responsibilities of property owners following a snowstorm. During substantial winter storms, the City may declare a Snow Emergency and a Parking Ban will go into effect at a specific time. During a Snow Emergency, parking is prohibited on streets signed No Parking during Snow Emergency and vehicles will be towed. A list and map of these particular streets is available at www.cambridgema.gov/traffic. The website also offers information on parking garages that provide free parking during a declared snow emergency.

Snow Emergencies

When a snow emergency is declared, information is available via phone at 617-349-4700, and is posted online as soon as possible at www.cambridgema.gov

and on City TV-8. Visit the Cambridge Alert Network at www.cambridgema.gov/AlertNetwork to sign up to receive snow emergency alerts via phone call, text message or Email. For school closings, call 617-349-6513.

Plowing Operations

The Department of Public Works will clear streets as soon as possible after a snow storm, starting with major arteries. Please don't take it personally if we plow snow back into your driveway, but as we work to make streets passable, it is often unavoidable. Your patience and participation help the City return streets and sidewalks to safe, passable conditions as quickly as possible.

Keep Sidewalks Clear

City Ordinance requires property owners to remove snow from sidewalks next to their property or business within 12 hours of daytime snowfall and before 1 p.m. when it has fallen overnight. They must also remove or melt all ice within 6 hours of the time it forms. There is a \$50 fine for each day of non-compliance.



If you are away, it is still your responsibility to ensure that someone clears sidewalks next to your property. Remember to:

- *Shovel your sidewalk on all sides of your property, down to bare pavement*
- *Make path at least 3 feet wide*

continued on next page

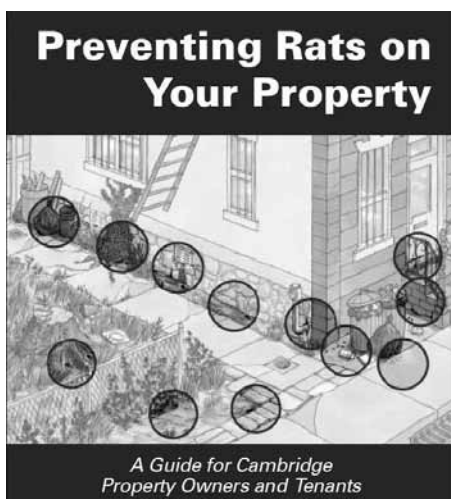
- Clear ramps at corners and crosswalks
- Chop or melt all ice
- Keep street drains clear of snow
- Consider helping neighbors who may have difficulty clearing their walk.

To report an unshoveled sidewalk, please call 617-349-4903 or visit www.cambridgema.gov/snow.

Exemptions

Disabled or elderly persons who qualify as low-income residents may be eligible for an exemption. Call the Cambridge Council on Aging, 617-349-6220 (voice) or 617-349-6050 (TTY) to learn more.

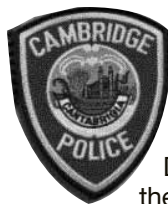
For more information, visit the Department of Public Works website: www.cambridgema.gov/snow.



The new Rodent Brochure is hot off the press! For more information, visit www.cambridgema.gov/rodents.

2012 Resident Permits

2012 Resident Parking Permits are now available. Although current permits do not expire until January 31, 2012, residents are encouraged to renew early by mail to avoid delays. Residents must renew by mail or in person to provide proof of residency, unless they have lived in the city for three years or greater and qualify for online renewal. Thanks to everyone who entered our 2012 resident permit photo contest. We received over 225 entries, many of which were outstanding and will be featured on the City's website and other City publications. The winning photo titled "Opportunity" was submitted by Tom Long. Again this year, the City is offering the opportunity for residents to make a voluntary contribution. The funds raised will be allocated to the City's climate change initiatives. For more information, call 617-349-4700 or visit: www.cambridgema.gov/traffic.



Share Information Anonymously with Police

The Cambridge Police Department believes that the public is its greatest law enforcement resource, and CPD relies heavily on the community to provide police with valuable information to help solve crimes and protect the city. That is why the Cambridge Police Department has several ways for members of the community to communicate information to police quickly and anonymously.



Send an ANONYMOUS text message to Tip411 (847411). Begin your message with Tip650 and then type your message. You will receive a response from the Cambridge Police with the option to continue communicating. To end your communication with police, simply type 'Stop' and send the message. Please remember that this is not a replacement for 9-1-1. If you witness an emergency situation, please call 9-1-1 immediately.

Call CPD's Anonymous Crime/Drug Tip Hotline at 617-349-3359. This 24-hour hotline is a mechanism for citizens to provide investigators with information relating to crimes, suspicious activity and illicit drug use and distribution, as well as other issues. If you witness an emergency situation, please call 9-1-1 immediately.

To submit crime tips and report suspicious activity, visit www.CambridgePolice.org and send an anonymous email to police using the email form provided.

CityView is published in May & November by the City Manager's Office.

Editor: Ini Tomeu,
617-349-4339

Sign up for Cambridge Alert Network at
www.cambridgema.gov

Health Beat

Bed Bugs: What You Can Do

Bed bugs are on the rise in Cambridge and elsewhere in the U.S. Bed bugs have not been shown to transmit disease, but their bites can cause intense itching and welts. Infestations are difficult to eliminate and typically require the services of a professional exterminator for effective eradication. It is not recommended that occupants apply the pesticides themselves.

Under Massachusetts law, landlords must keep rental units free from rodents and insect infestations. If you suspect bed bugs in your apartment, notify your landlord immediately. In most instances, the owner will be required to hire a licensed pest control company. If the landlord fails to take action, contact the City's Inspectional Services Department (ISD) at 617-349-6100. Upon your request, ISD staff may inspect your apartment and order the landlord to correct the problem. Tenants are expected to participate in the extermination process. To learn how to check for bed bugs in your home, prevent their spread, and protect against bites, call the Cambridge Public Health Department at 617-665-3848.

Join the Men's Health League

Do you know a father, son, brother, uncle or nephew who needs health insurance, a primary care physician, or help developing a fitness and exercise program that works for them? If so, let them know about Men's Health League programs, based at the Cambridge Public Health Department. For more information, contact Albert Pless at 617-665-3677 or apless@challiance.org.

Are You Ready for Winter?

This year alone, Massachusetts has experienced deadly storms, tornadoes and a hurricane. Are you ready for severe weather this winter? For safety information and emergency planning tips, check out www.ready.gov and the Health Department's brochure *Emergency Preparedness Begins at Home*, available at www.cambridgepublichealth.org/publications.

For more information, contact the Cambridge Public Health Department at 617-665-3800 or visit www.cambridgepublichealth.org.

Report on the Status of Immigrant Women and their Families

This winter, the Immigrant Women's Roundtable, chaired by the Cambridge Women's Commission, will release A Report on the Status of Immigrant Women and their Families in Cambridge. This first-of-its-kind report compiles data from the US Census, Cambridge School Department, Community Learning Center and the 2010 Immigrant Women's Roundtable Survey to paint a broad picture of immigrant women living in Cambridge today. The report includes information on demographics, immigration trends, family life and children, language skills, education, economics, health and safety, and Cambridge resources.

The Immigrant Women's Roundtable was formed to give voice to a group in Cambridge that can sometimes be marginalized, especially in quantitative, city-wide statistics. The absence of accurate sources of data concerning immigrant women living in Cambridge not only hinders their political participation in, and use of, the programs and services that are available to them, but also conceals the gaps in services that may exist. Comprised of providers and immigrant women, the Immigrant Women's Roundtable's desire is to improve the mechanisms to reach and serve marginalized communities in the city and to engage them not only as immigrants, but as women. For more information, please contact the Cambridge Women's Commission, 617-349-4697 or eshield@cambridgema.gov.

GLBT Commission Update

In the fall of 2010, the GLBT Commission initiated two proposals that resulted in orders being submitted to and approved by the City Council in early 2011. The first was to provide compensation for same-sex married employees who are taxed by the IRS for the provision of health insurance coverage to their spouses; this is now available to all City of Cambridge same-sex married employees. The second was to look into including Gender Neutral Bathrooms in City buildings and commercial establishments to meet the needs of transgender people, people with opposite gender caregivers and parents of opposite gender children – for this a committee is in place working on a recommendation.

Working with an intern hired by the



Tour the Cambridge Public Art Collection

Walk around any neighborhood in Cambridge, and you are sure to come across something surprising: a mural on the side of a building, a sculpture in a park, a patterned walkway. These are all examples of public art, which, unlike art in a museum, is located on street corners, in youth and senior centers, schools, libraries, parks, plazas and sidewalks. Public art is part of the landscape of our daily lives and involves many people, neighborhoods and communities working with artists to creatively reveal and celebrate what makes a place special. Murray Dewart's sculptures in Franklin Street Park located in the Riverside neighborhood



Sculpture by Murray Dewart in Franklin Park.

were among the works recently spotlighted on the news magazine show, *Chronicle*, on WCVB Channel 5. These sculptures represent just one example of the nearly 200 public artworks in the City's collection. Cambridge holds the unique distinction of maintaining the largest contemporary public art collection in Massachusetts, which continues to grow due to the City's commitment to integrating art into capital planning and development. Discover public art in your neighborhood and throughout Cambridge! Visit: www.cambridgeartscouncil.org/publicart

CAC Gallery Exhibit Rosalind Murray: *Lateral Canal Ahead*

Cambridge Arts Council, City Hall Annex (through 12/9/11)
344 Broadway, 2nd Floor, Cambridge

Irish artist Rosalind Murray creates playful, intimate and poetic narratives through performance. Murray draws and sings her way around the urban environment of the City of Cambridge, and the rural environment of her hometown, Carlow, in the river Barrow valley in Ireland. *Lateral Canal Ahead* is a

poetic detour of gallery works and live performances made on and around train tracks in Cambridge and canal tracks in Carlow. Within these frames, Murray finds inspiration and curiosities from a parallel past of industry that shapes our lives and landscapes. Info: www.cambridgearts council.org

Mayor's Office, a study was performed and plan created to help ensure that the needs of GLBT seniors in housing and healthcare are properly addressed by policies, practices and training.

Collaborating with the Mayor's Office, the Commission held the 21st annual Pride brunch in June, co-sponsored opening night of the annual Boston LGBT Film Festival at the Brattle Theatre and hosted a GLBT Town Meeting in November. The Commission also distributed information this year at Cambridge River Festival, Danehy Park Family Day and MayFair.

Free Tax Preparation for Eligible Residents

CEOC—Cambridge Economic Opportunity Committee will provide FREE tax preparation beginning January 17, 2012 for low-income residents, seniors and people with disabilities. Taxes are filed electronically and generally refunds are turned around quickly. CEOC also assists residents in applying for benefits such as Food Stamps, MassHealth, subsidized housing, Welfare, SSI and SSDI and provides financial coaching and credit counseling. For more information or to make an appointment, call CEOC at 617-868-2900.

Cambridge Public Library News

The Cambridge Room, the research repository for the Cambridge Public Library Archives and Special Collections, opened to the public in July. A diversity of researchers, including anthropologists, local historians, genealogists, curiosity seekers, students and professors as far away as the Universidade de Lisboa, have visited the Cambridge Room to use the collections. Follow the Cambridge Room blog at thecambridgeroom.wordpress.com

The Children's Room is a special place that will captivate, inspire and challenge kids of all ages. Meet our room gerbils,

Tallulah and Blanche who even have their own Facebook page. Visit the Kids page at www.cambridgepubliclibrary.org.

Affordable Internet Service for Eligible Families

Cambridge Public Schools is partnering with Comcast on a program called Internet Essentials. If you have at least one child receiving free school lunches, you may qualify for a fast, affordable home Internet service for \$9.95 monthly plus tax. You can also buy a computer for \$149.99 plus tax and receive free training. Call 1-855-846-8376 to see if you qualify. This is not a School program and is not endorsed or required by the school.

New City Website Features

In addition to the new City Facebook page and Cambridge Alert Network, the City's Website contains other new features. Click on Cambridge iReport icon to report issues related to basic City services, such as a pothole repair, missed trash/recycling/yard waste pickup, graffiti, rodent sighting or broken street light. Requests are automatically assigned to the responsible department and given a tracking number. The new Google Translate icon enables users to view the City's Website in several different languages. Visit www.cambridgema.gov or download the iReport Cambridge mobile application to your IOS or Android Powered smart device.

Pay Real Estate and Personal Property Taxes Online

The City of Cambridge is pleased to offer Online bill payments for Real Estate and Personal Property tax bills. Property Tax bills are the latest addition to our current selection of payments online. Our secure, easy to use, bill payment program is provided by a third party merchant Govolutions LLC. Visit www.cambridgema.gov and click on Pay Bills Online.

Community Preservation Act Generates \$111.3 Million for Affordable Housing, Historic Preservation, Open Space

Since the adoption of the Community Preservation Act (CPA) in 2001, the City of Cambridge has been able to appropriate/reserve \$111.3 million in state and local funds for affordable housing projects, historic preservation and protection of open space. The fiscal year

2012 CPA (state and local combined) appropriation totaled \$9.6 million. The CPA Committee makes annual recommendations on how these funds should be used, based upon public input gleaned through advertised public meetings and suggestions developed by City staff. For more information, visit www.cambridgema.gov and go to Budget Department web page, or contact Nancy Schlacter at 617-349-4301 or nschlacter@cambridgema.gov.

ECRWSS
Resident Postal Customer
Cambridge, MA

City Council
Mayor David P. Maher
Vice Mayor Henrietta Davis
Councilor Leland Cheung
Councilor Marjorie C. Decker
Councilor Craig A. Kelley
Councilor Kenneth E. Reeves
Councilor Sam Seidel
Councilor E. Denise Simmons
Councilor Timothy J. Toomey, Jr.

City Manager Robert W. Healy
Deputy City Manager Richard C. Rossi

a publication of the Office of the City Manager
City of Cambridge
795 Massachusetts Avenue • Cambridge, MA 02139
617-349-4300 • www.cambridgema.gov

CityView



PRESORTED
STANDARD
US POSTAGE
PAID
Boston, MA
Permit No. 54162