

Western Avenue Reconstruction Community-wide Meeting 3/31/10



CITY OF CAMBRIDGE
COMMUNITY DEVELOPMENT DEPARTMENT

Environmental &
Transportation Planning

<http://westernavenue.info>

Welcome

Susanne Rasmussen, Director
Environmental & Transportation Planning
Community Development Department

2

Team

Department of Public Works

Owen O'Riordan, James Wilcox, Wendy Robinson, Kelly Dunn

Community Development Department

Susanne Rasmussen, Bill Deignan, Jeff Rosenblum

Traffic, Parking, & Transportation

Sue Clippinger, Jeff Parenti, Wayne Amaral

Consultants

John Struzziery (SEA), Jerry Friedman (HDR), Rod Emery (Jacobs), Cynthia Smith (Halvorson), Chris Hart (IHCD)

3

Agenda

- Welcome
- Overview of the project
- The community input process
- City policies and project goals
- Surface redesign
- Questions
- Community input: positives and negatives about Western Ave.
 - Break-out session
 - Report back

5

The Project

Owen O’Riordan, City Engineer
Assistant Commissioner of Engineering
Department of Public Works

6

Project schedule

Dec. 2009	Initial survey work complete
Feb. 2010	Begin community process
Jun. 2010	Complete conceptual design
Apr. 2011	100% design complete
Jul. 2011	Construction begins
Nov. 2012	Construction is completed

7

Project scope



Project scope

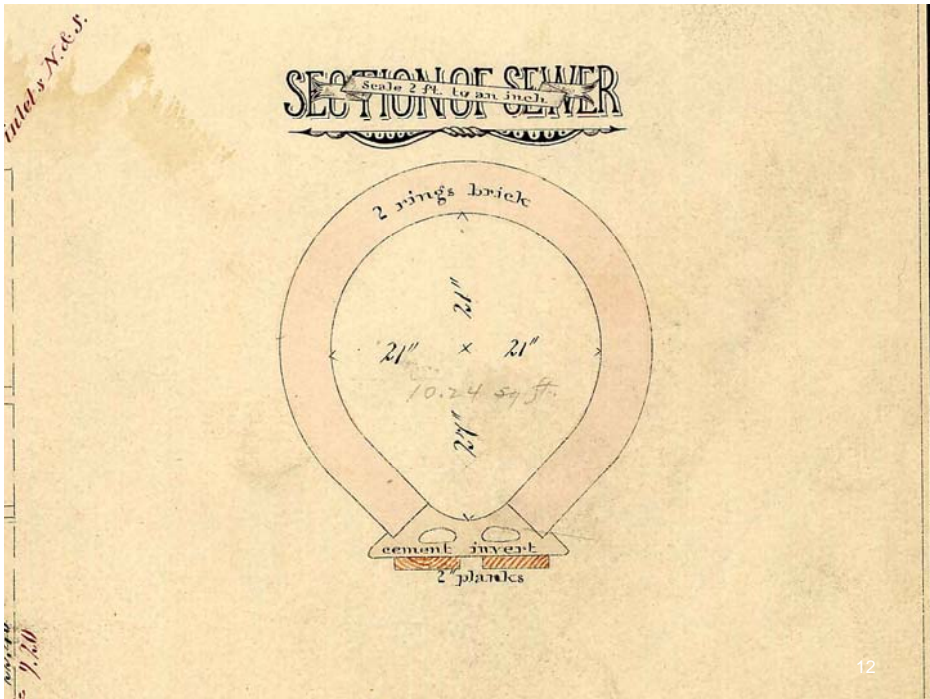
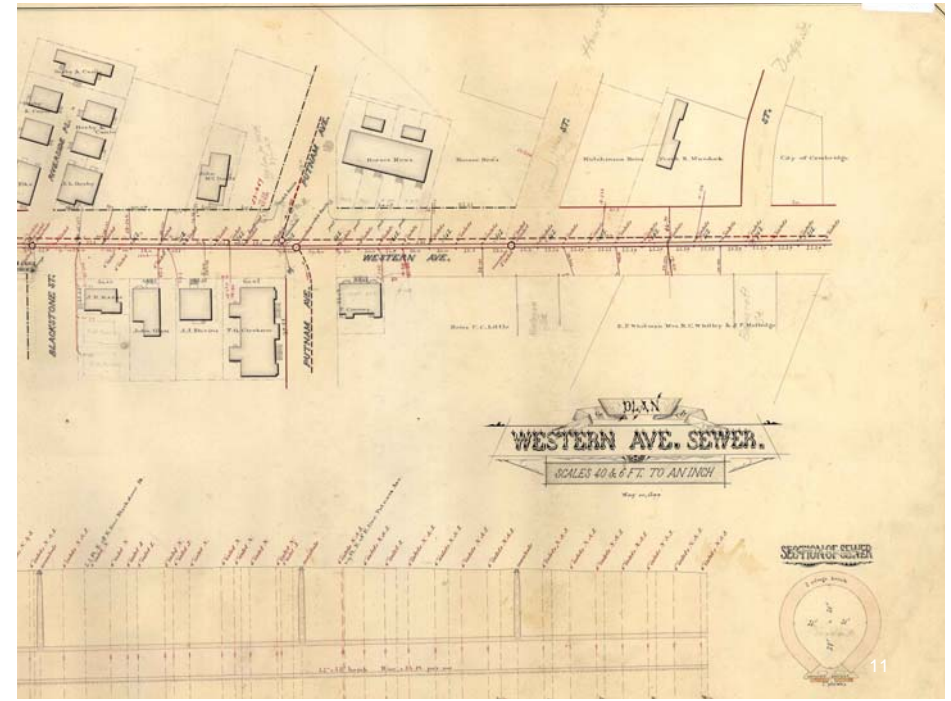
Subsurface

- City: sewer, water, electrical for street lighting
- Companies: gas, electric, telephone, cable as needed

Surface

- City: roadway, sidewalks, street furniture, trees, lighting
- Available funding for surface restoration depends on final cost of doing subsurface

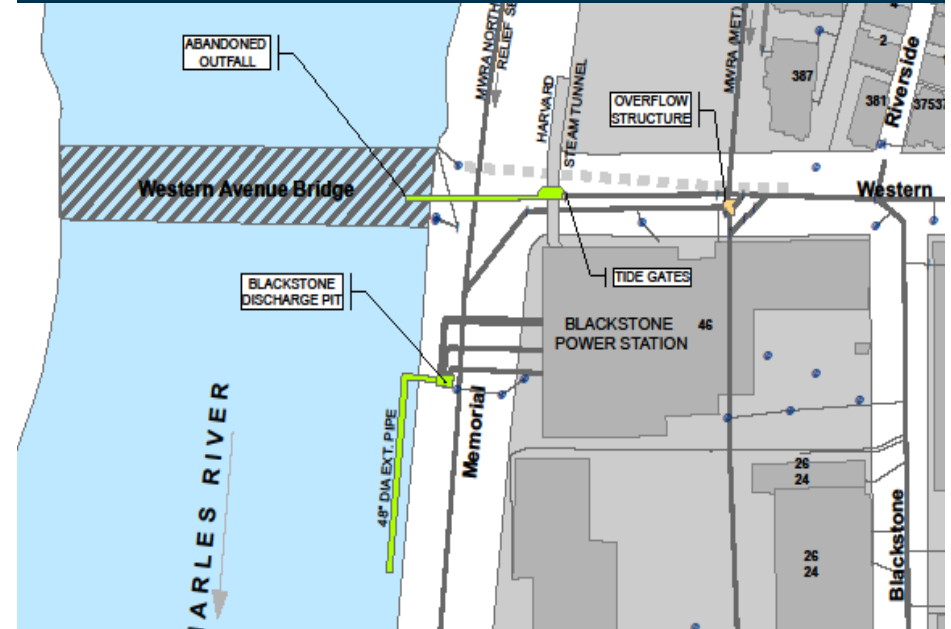
9



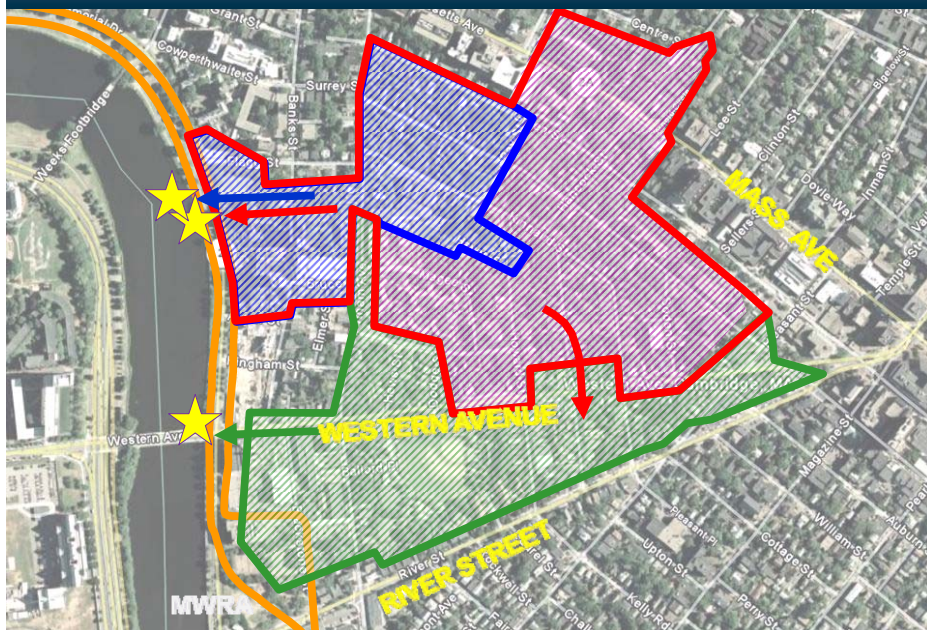
Video survey



Outfall Locations



Western Avenue Catchment Area



Surface Redesign Community Process

Susanne Rasmussen, Director
Environmental & Transportation Planning
Community Development Department

Outreach

- Advisory committee
- Community-wide public meetings
- Neighborhood presentations
- Survey
- Informal walks of Western Ave.
 - See postcard
- Website: <http://westernavenue.info>

18

City Policies

Susanne Rasmussen, Director
Environmental & Transportation Planning
Community Development Department

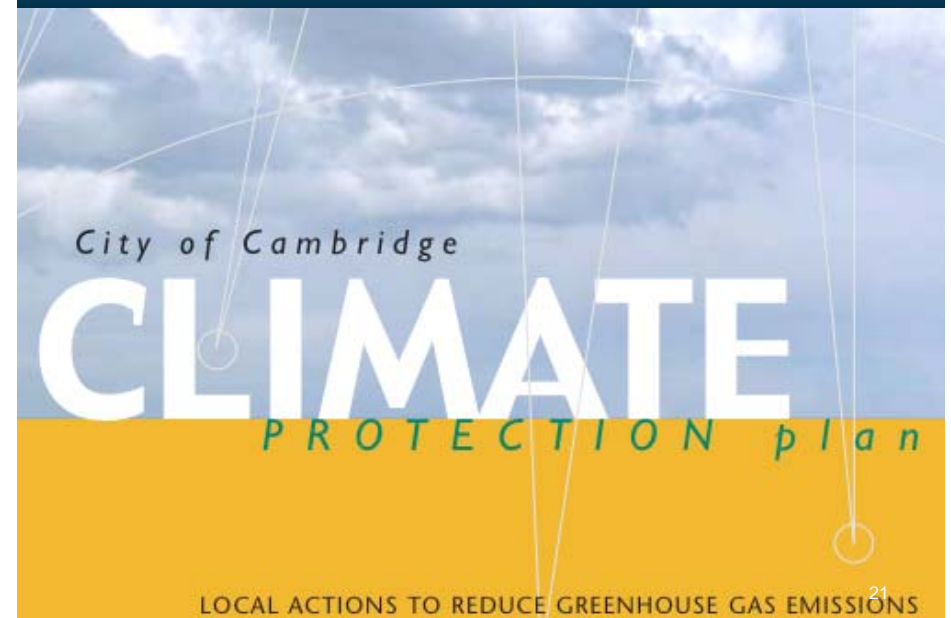
19

Western Avenue is a...

- Regional roadway *and*
- Neighborhood street *and*
- Retail district *and*
- Front yard.

20

GHG emissions: reduction by 20% by 2010



21

Growth Policy Document (1993, 2007)

Policy #22

- Undertake reasonable measures to improve the functioning of the city's street network, without increasing through capacity, to reduce congestion and noise and facilitate bus and other non-automobile circulation.

22

Growth Policy Document (1993, 2007)

Policy #23

- Encourage all reasonable forms of nonautomotive travel including, for example, making improvements to the city's infrastructure to support bicycling and walking.

23

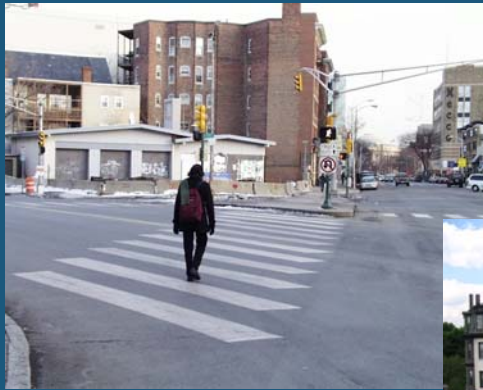
Massachusetts Avenue, 1996



Brookline Street



Lafayette Square, 2008



AFTER



26

Project Goals

Susanne Rasmussen, Director
Environmental & Transportation Planning
Community Development Department

27

Surface design: Preliminary project goals

- Ensure corridor is safe for all users
- Maintain adequate traffic flow
- Reinforce residential character
- Appropriate traffic speed
- Improve conditions for walking, bicycling, and transit riders
- Provide disability access
- Improve access to businesses
- Help meet stormwater environmental goals through “low impact designs”
- Provide adequate parking
- Environmental sustainability
- Improve landscaping

28

Mobility on Western Avenue



Transit riders



People on foot



Bicyclists



Cars



Trucks

29

Surface Redesign

Jeff Rosenblum, Transportation Planner
Environmental & Transportation Planning
Community Development Department

30

Overall design of roadway and sidewalk

- Vehicle travel lanes
- Intersections and pedestrian crossings
- Bicycle accommodation
- Parking
- Lighting
- Surface material for sidewalk
- Trees, plantings
- Open-space
- Green design elements

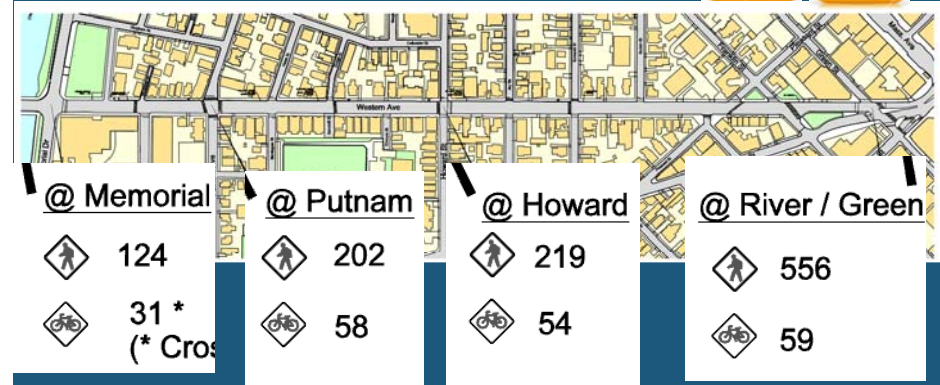
31

Existing conditions survey

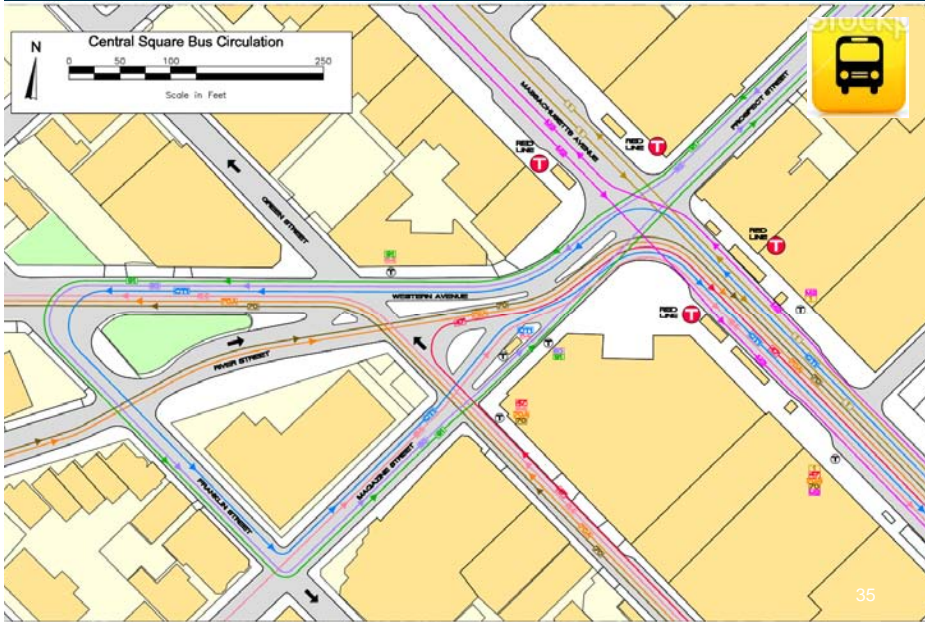
- Sidewalk/roadway conditions
- Accessibility
- Vehicle, bicycle, pedestrian volumes
- Peak traffic, queues, travel times
- Turning movements
- Transit circulation study
- Safety history
- Parking utilization study
- Tree inventory

32

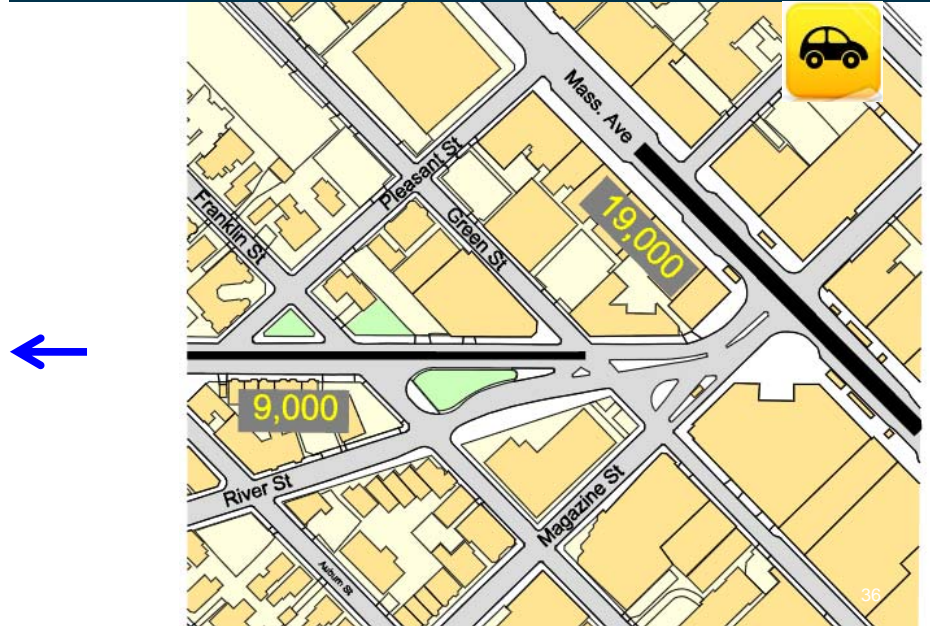
Peak-hour bicycle & pedestrian volumes



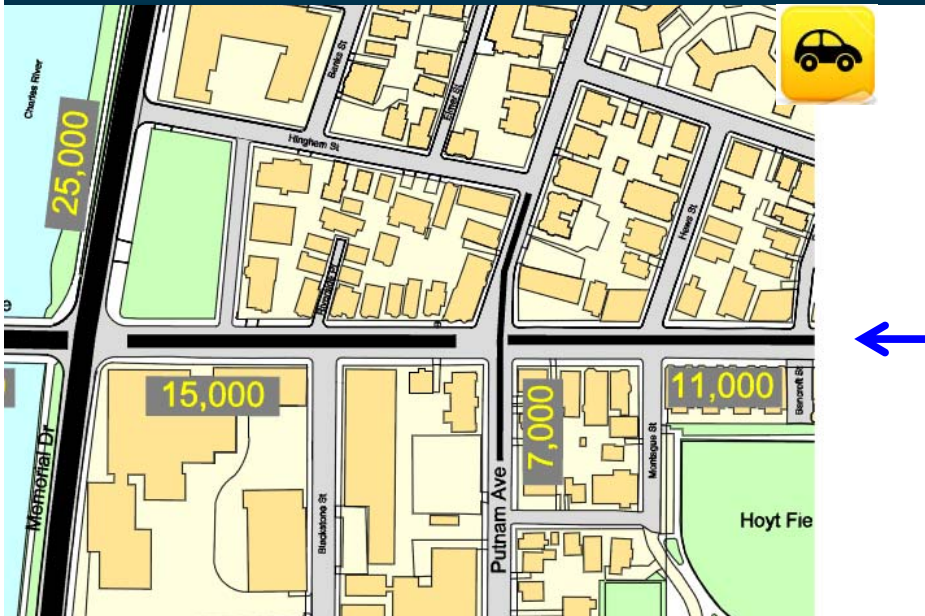
Transit (bus, subway)



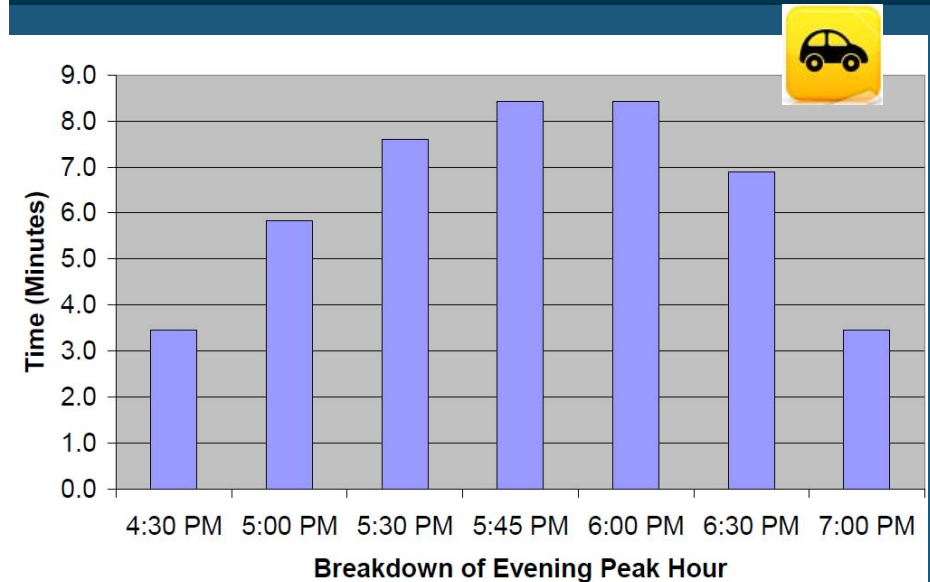
Daily traffic volumes



Daily traffic volumes



Travel times: Green St. to the bridge



Questions

Susanne Rasmussen, Director
Environmental & Transportation Planning
Community Development Department

39

Community Input

Break out session (30 minutes)

1. Fill out questionnaire
2. What do you like about Western Avenue?
What don't you like?
3. Observations, write on map
4. Summarize group

Report back (30 minutes)

40

INTERNAL PROCESS

Break-out session (30 min)

- Participants will break out into groups of about 8-12 depending on the audience size
- There will be one facilitator per group (city staff + maybe some selected committee members if needed)
- Each participant will be given 5 minute to sit quietly and fill out the survey (same survey as we have online)
- Facilitator will have group go through "likes and don't likes" of western avenue, and areas of concern
- Each group will have a 12x36 map, which can be marked up.
- One member of each group will be selected to present

Report Back (30 min)

- about 5 min per group for 6 groups)

41

Western Avenue Reconstruction Community-wide Meeting 3/31/10



CITY OF CAMBRIDGE
COMMUNITY DEVELOPMENT DEPARTMENT

Environmental &
Transportation Planning

<http://westernavenue.info>

Transit (bus, subway)

