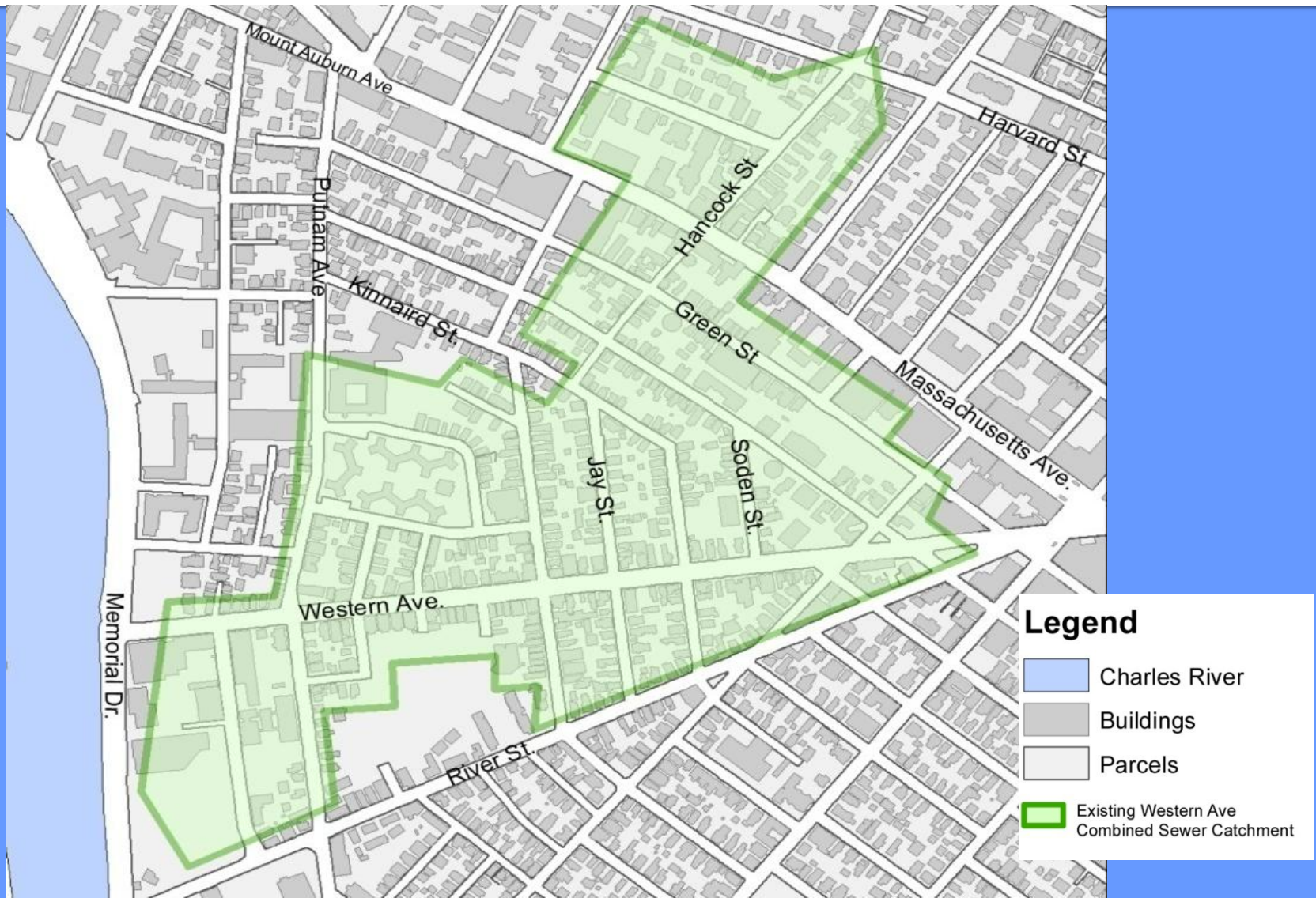


WESTERN AVENUE INFRASTRUCTURE DESIGN PROJECT

Subsurface Project Information
June 8, 2011



Existing Western Avenue Catchment Area



Western Avenue – Historical

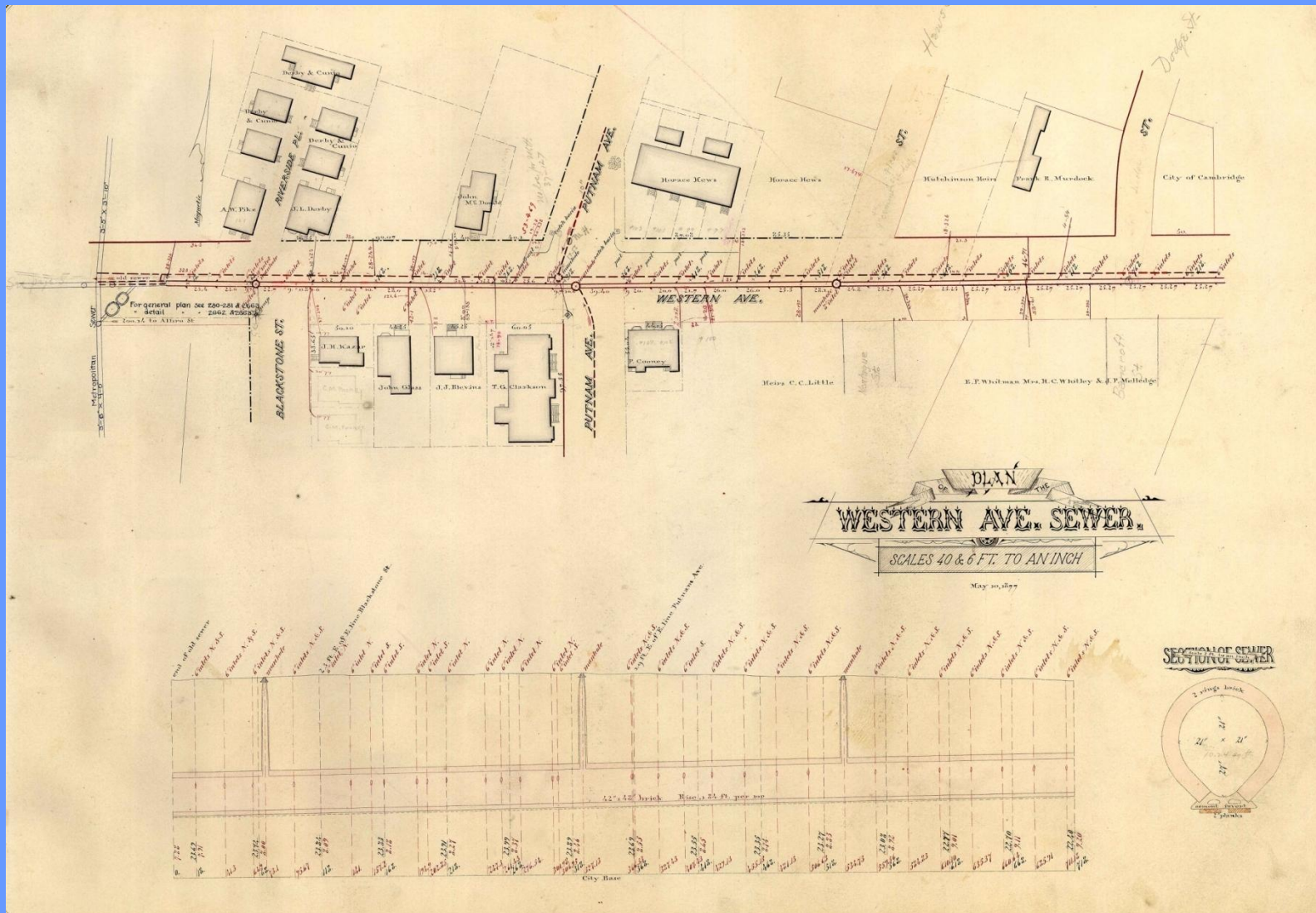


Charles River Seawall 1903

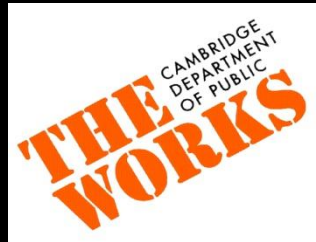


River Street 1903

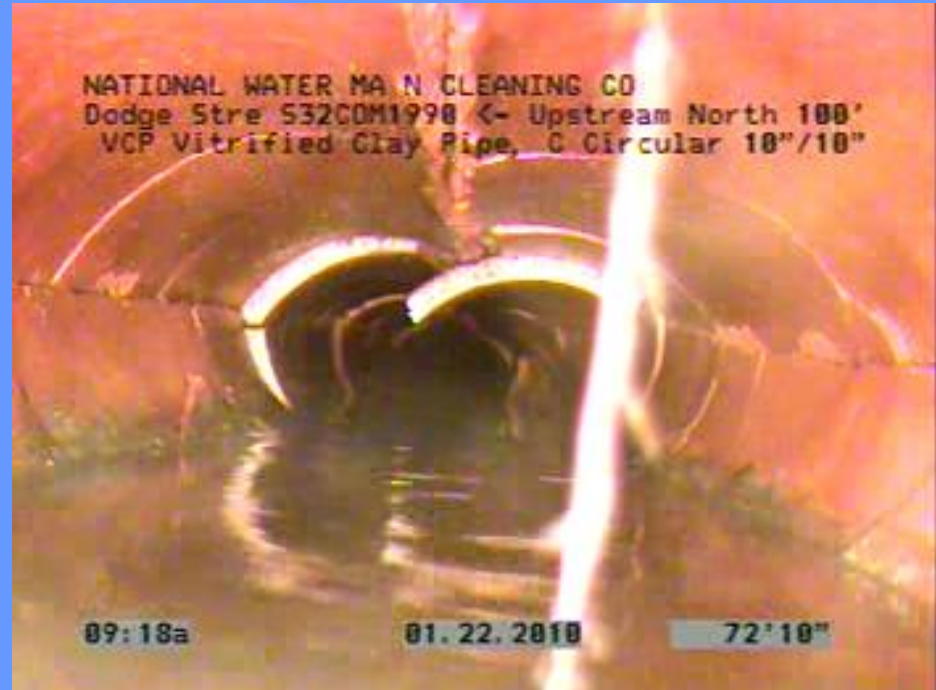
1870 Combined Sewer Plan



2010 Sewer Inspections

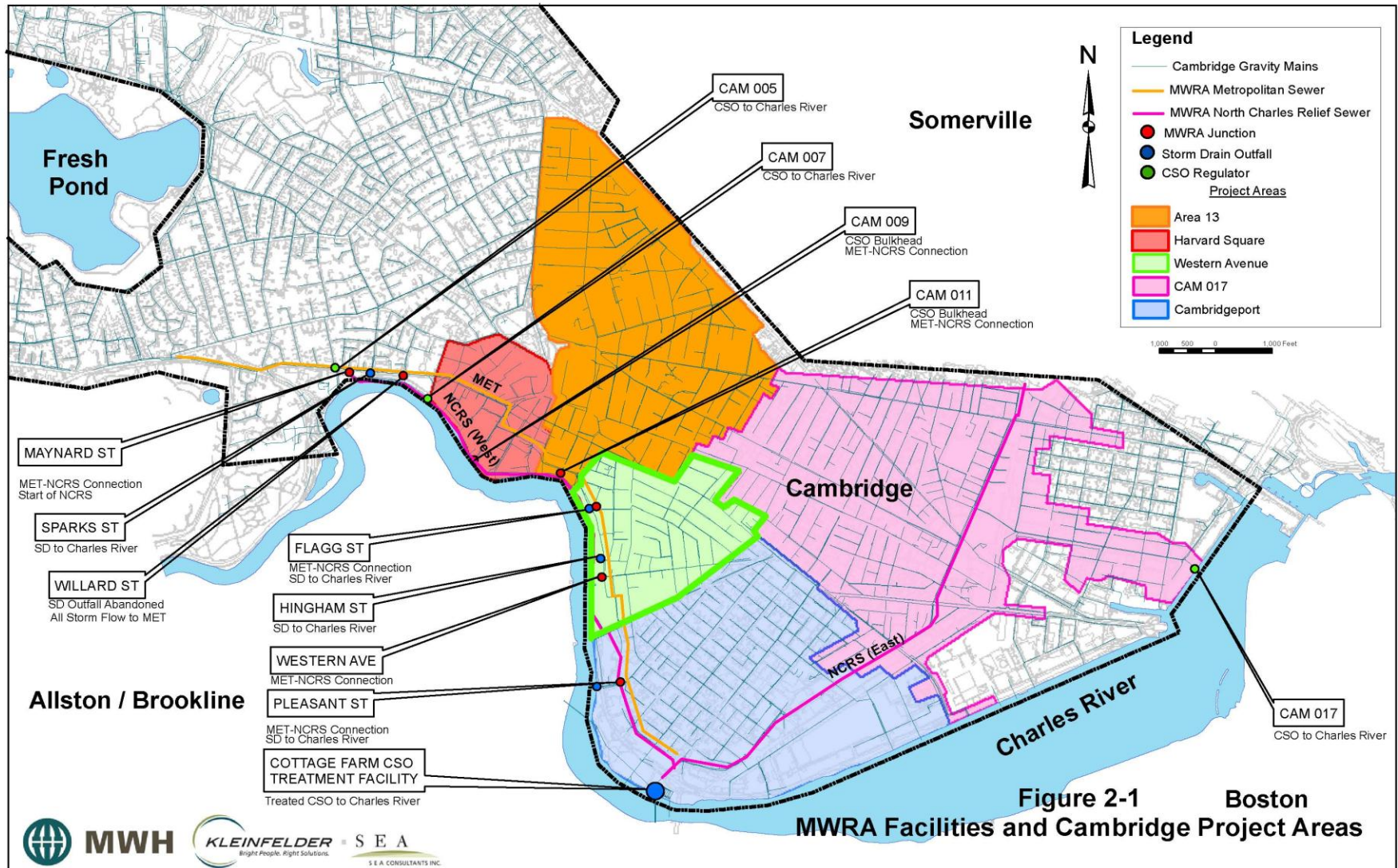


Slate collapse into sewer

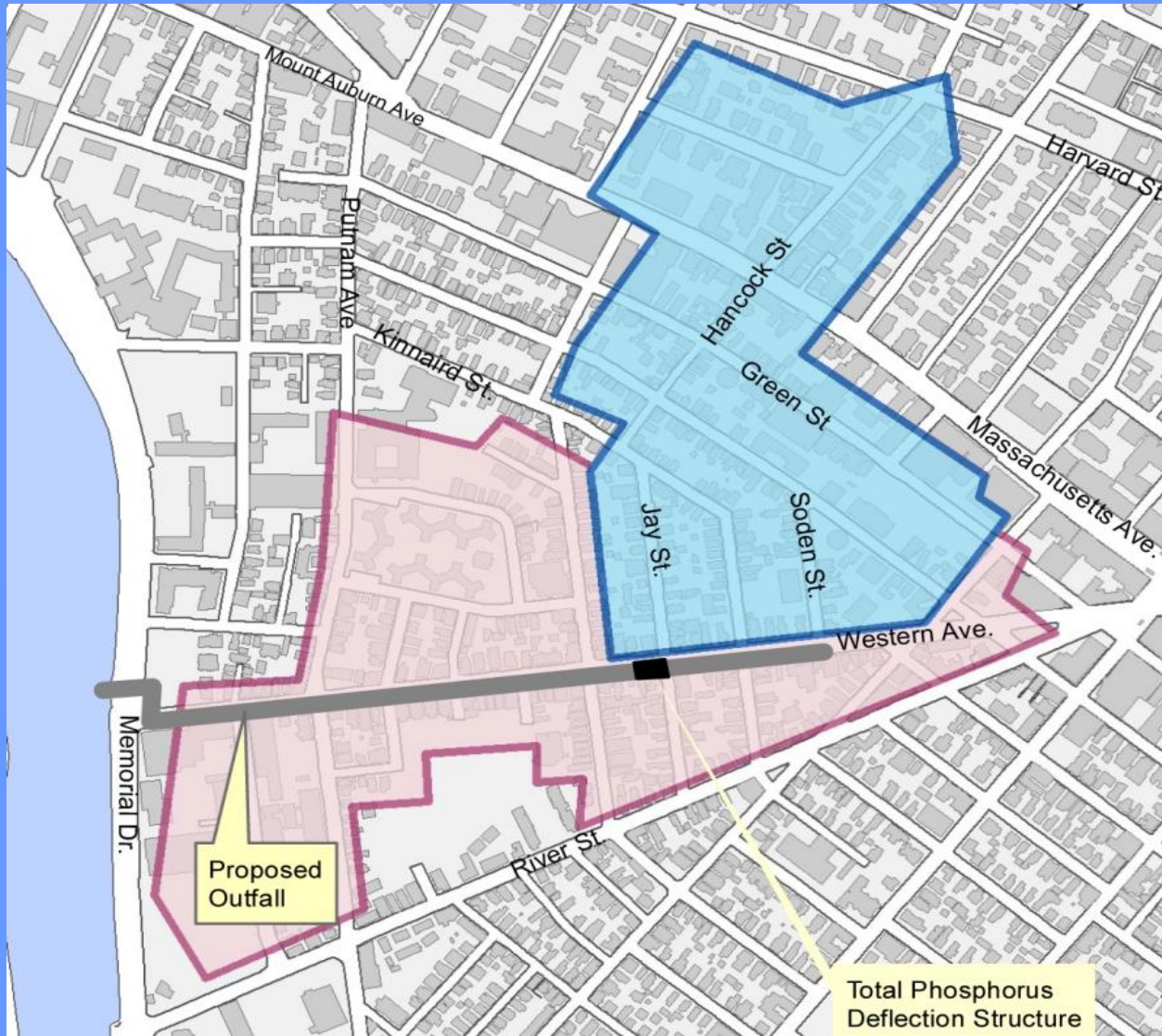


Sewer collapse at crown of pipe

Eastern Cambridge Drainage



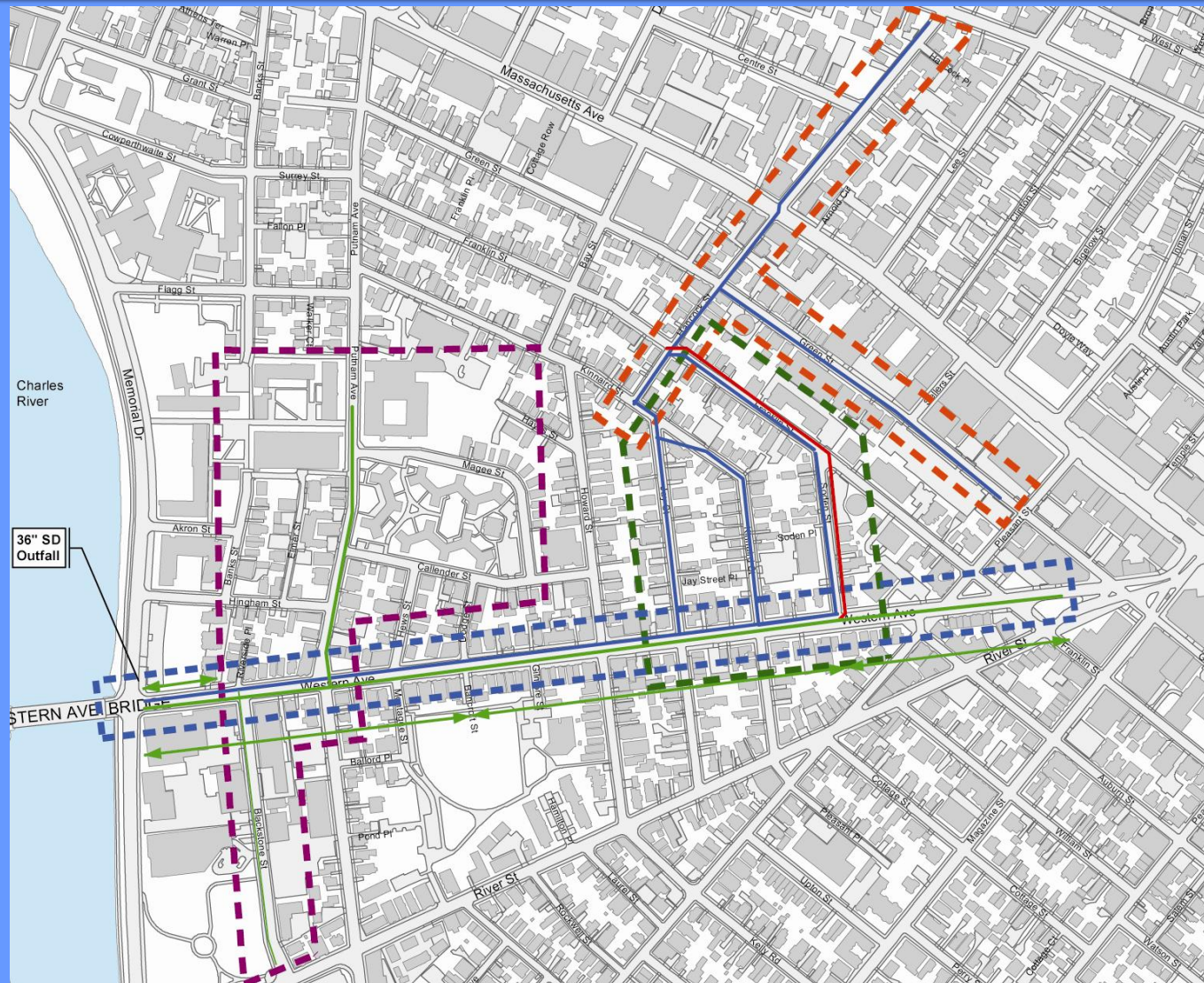
Proposed Western Avenue Catchment Areas



Legend

-  Charles River
-  Buildings
-  Parcels
-  Proposed Western Ave Storm Drain Catchment
-  Proposed Western Ave Combined Sewer Catchment

Project Phases



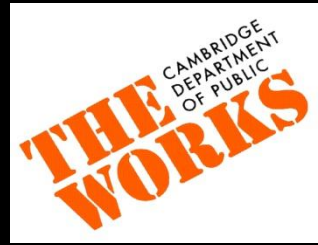
Legend

- Buildings
- Parcels
- Sanitary Sewer
- Combined Sewer
- Storm Drain
- Phase 1
- Phase 2
- Phase 3
- Phase 4

Phase 1 - Western Avenue



Project Scope

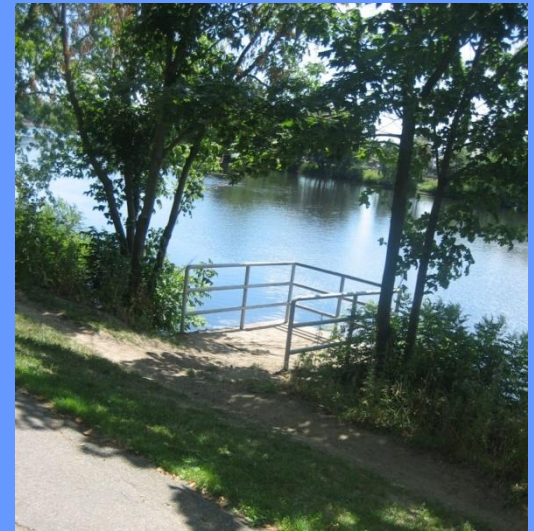


- Sewer
- Storm drain
- Water
- Gas
- Electric, telephone, cable as needed

Stormwater Outfall Structure



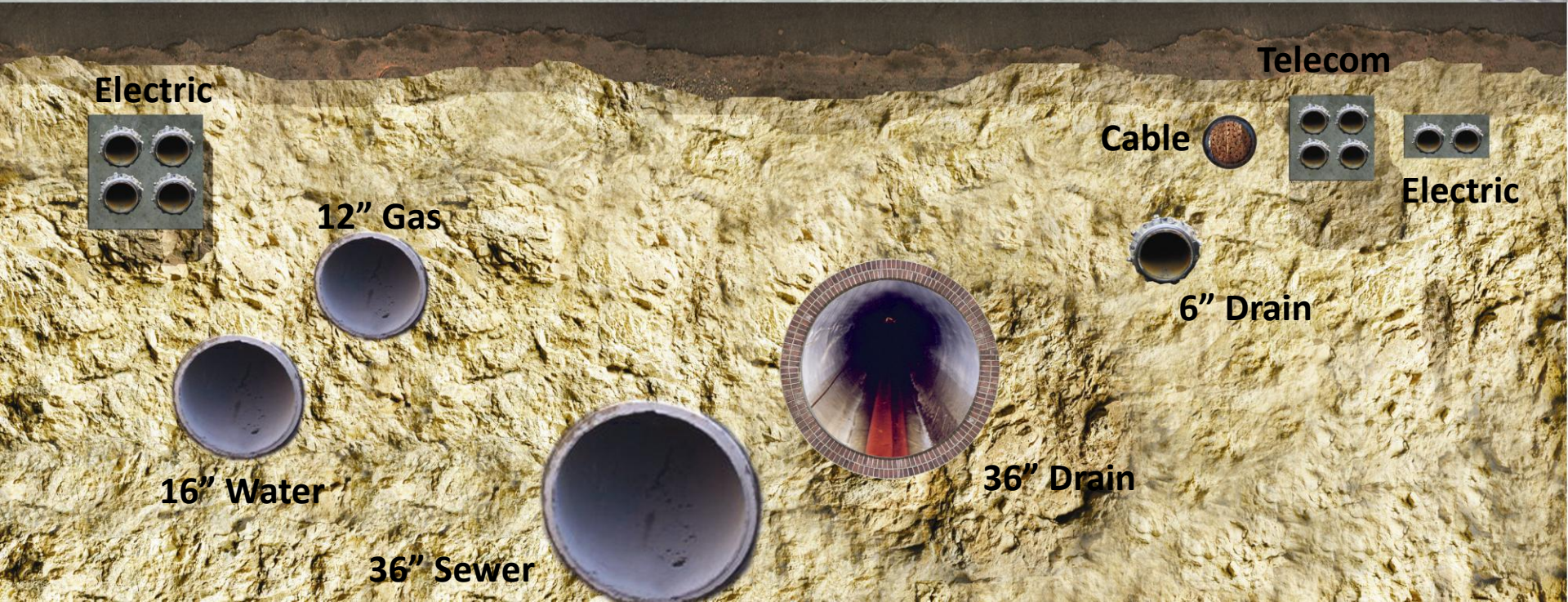
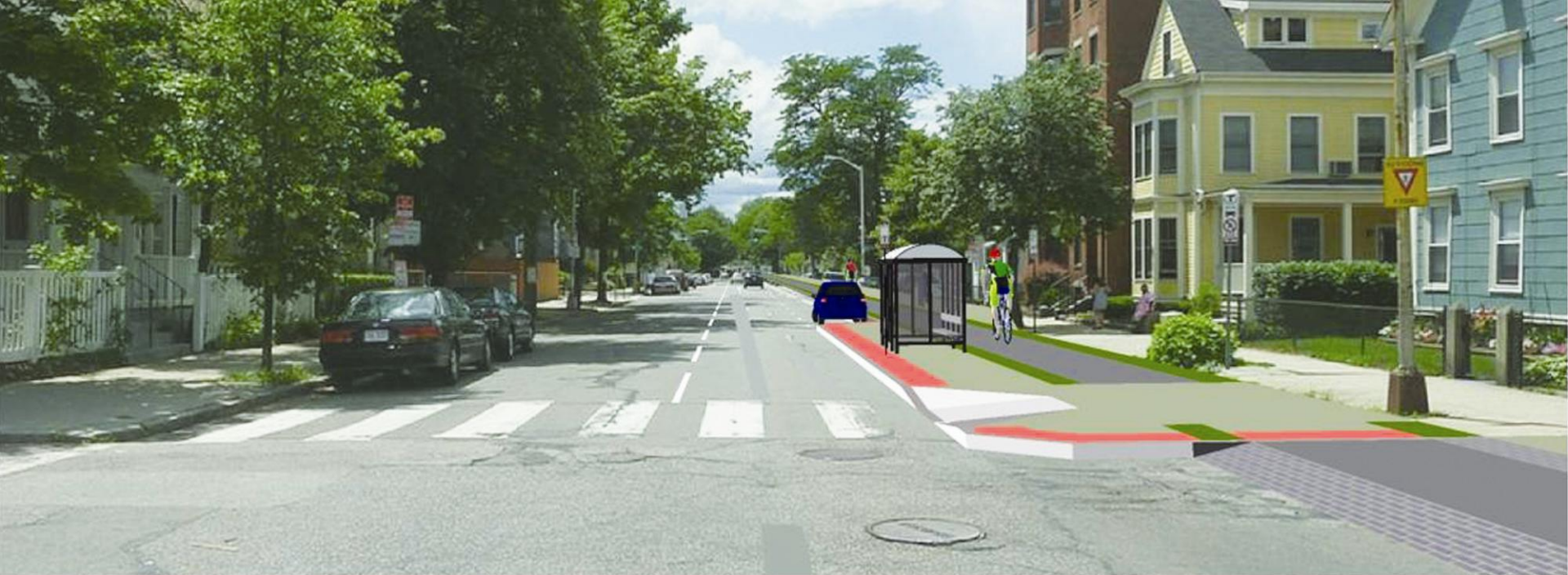
Approximate location of new outfall along Memorial Drive



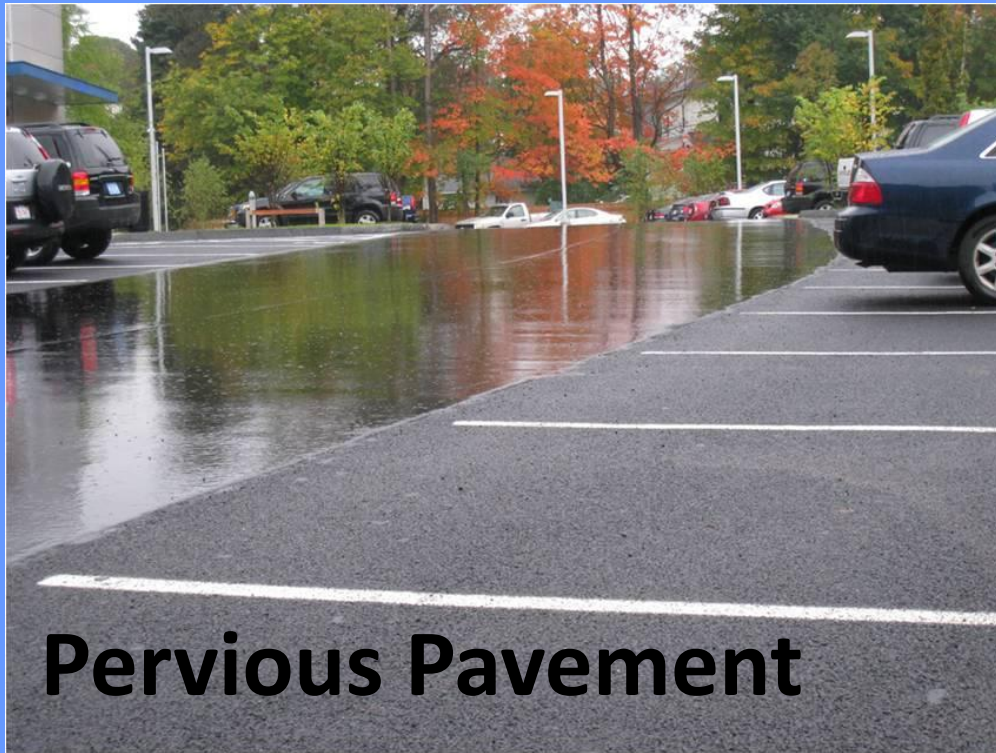
Examples of stormwater outfalls similar to proposed

Proposed Western Avenue Outfall





Drainage Enhancements



Pervious Pavement

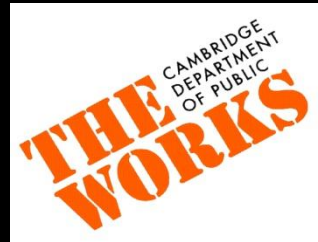


Rain Gardens

Cronin Park



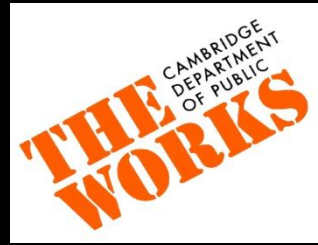
Utility Relocations



- NSTAR Gas Relocation
 - June 2011 – October 2011
- NSTAR Electric
 - Fall 2011
- Coordination ongoing with other utilities



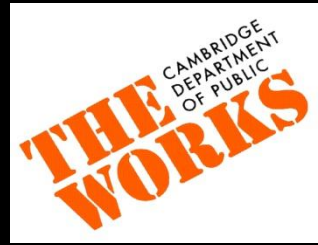
Construction Schedule



- Subsurface Construction
 - December 2011 – December 2012
- Surface Restoration
 - December 2012 – December 2013



Future Community Meetings



- September/ October 2011
- December 2011/January 2012
- Additional community meetings as needed during construction

Questions?

