

PROJECT NAME
HARVEY STREET RESIDENCES

PROJECT ADDRESS
135 HARVEY STREET CAMBRIDGE, MA

CLIENT
YOUNG INVESTMENT LLC

ARCHITECT
KHALSA DESIGN INC.



17 ALCOCK STREET, SUITE 400
SOMERVILLE, MA 02143
TELEPHONE 617-467-4452 FAX 617-467-4452

CONSULTANTS:
LANDSCAPE ARCHITECT
Hill House Design Associates
318 Harvard Street, Suite 205
Brookline, MA 02445
TEL: 617-730-1180
F: 617-405-0220
WC: www.hillhousedesignassociates.com

CIVIL ENGINEER
VVP ASSOCIATES
132 Adams Street, 2nd Floor
Newton, MA 02459
TEL: 617-552-0771



Project number
Date: 09-02-2011
Drawn by: NA
Checked by: BH
Scale: 1/16"=1'-0"

REVISIONS

No.	Description	Date

PLANTING NOTES

- All plant material shall be approved by the Landscape Architect prior to arrival on the site.
- All plant material shall conform to the guidelines established by "The American Standard for Nursery Stock", published by the American Association of Nurserymen, Inc.
- No substitution of plant species shall be allowed without the written approval of the Landscape Architect. Any proposed substitutions of plant species shall be a plane of equivalent overall form, height and branching habit, flower, leaf and fruit, color and time of bloom.
- The Contractor shall locate and verify all utility line locations prior to staking and report any conflicts to the Landscape Architect.
- All plants shall be staked out in their approximate location by the Contractor. The Contractor shall adjust the locations of these stakes as required by the Landscape Architect to account for subsurface utilities, other field conditions and to achieve design intent. Final locations must be approved by the Landscape Architect prior to planting.
- No planting shall be installed before acceptance of rough grading of topsoil.
- The rootballs of trees shall be planted 3" above adjacent finished grade. Excavate holes no deeper than the rootball of trees. Holes shall be at least 3" greater in diameter than root ball. Backfill planting hole with planting mix. All plants which settle out of plumb or below finished grade shall be immediately replanted.
- The rootballs of shrubs shall be planted 2" above adjacent finished grade. Excavate holes no deeper than the rootball of shrubs.
- All shrubs, groundcovers and perennials shall be planted in continuous planting beds. All beds shall be excavated 12" and the topsoil and subsoil set aside for reuse. Remove all stone and debris from excavated soil. Backfill beds with 12" of planting mix before planting shrubs, perennials and groundcovers.
- Planting mix shall consist of 2 parts of topsoil from site excavations and 1 part compost. Thoroughly mix to create uniform blended mixture. If insufficient topsoil is available on the site, mix existing soil in a ratio of 1 part soil to 1 part compost. Remove all stones and debris larger than 2" from planting mix.
- All beds as shown on the drawings shall be edged with a 4" trench neatly cut and backfilled with bark mulch. All shrub beds shall be covered with no less than 2" depth selected bark mulch and no greater than 3" depth bark mulch.
- All planting to be done under the full time supervision of a certified arborist, nurseryman or licensed Landscape Architect.
- All plants are to be thoroughly watered after installation, at least twice within the first 24 hours.

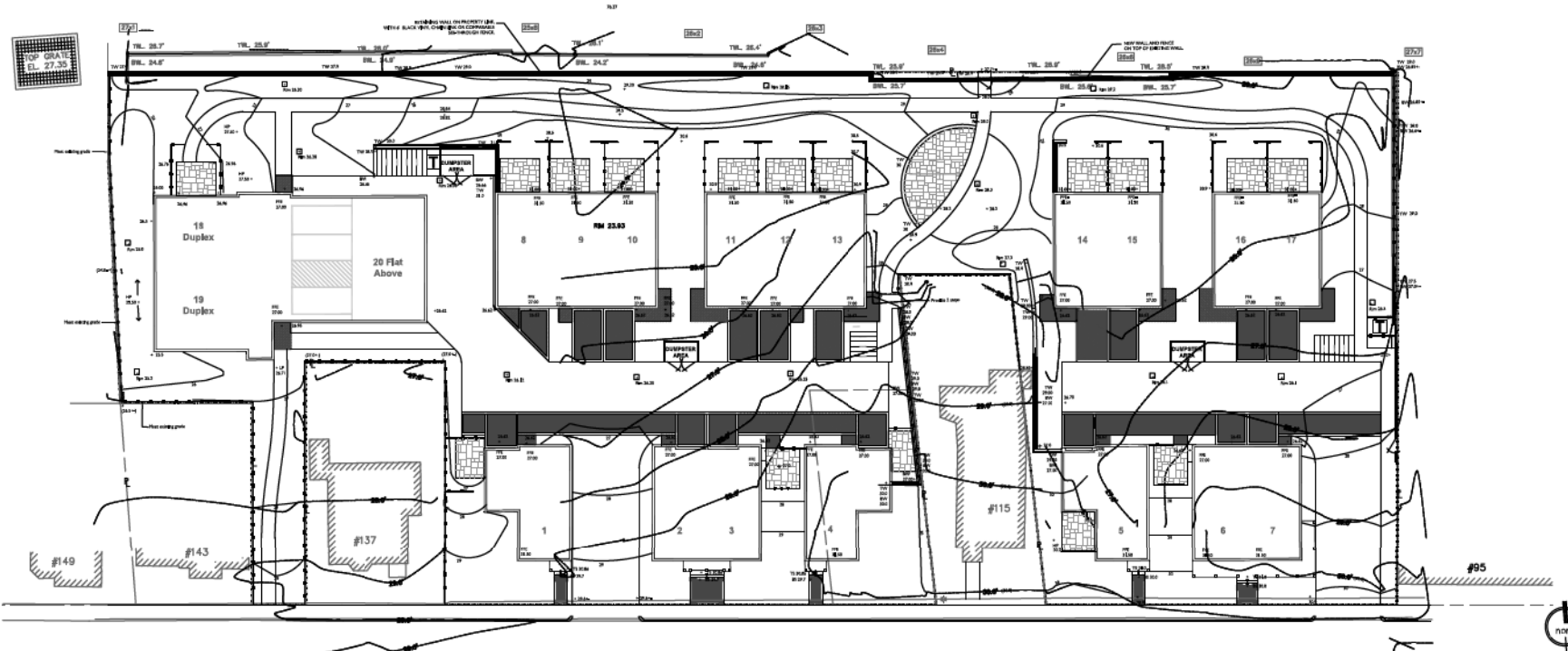
PLANT LIST

KEY	QTY	LATIN NAME	COMMON NAME	SIZE	NOTES
TREES					
AR	9	Deciduous shade trees		2.5'-3" cal	B&B
AR	7	Acer rubrum 'Red Sunset'	Red Maple	2.5'-3" cal	B&B
AL	14	Ambrosia artemisiifolia	Studiotree	7'-8" cal	B&B
BN	9	Betula nigra 'Heritage'	Heritage River Birch	2.5'-3" cal	B&B single stem
CB	1	Carpinus betulus 'Columnaris'	European Hornbeam	2'-2.5" cal	B&B
PA	2	Picea abies	Norway Spruce	7'-8" ht.	B&B
PS	23	Pinus strobus	White Pine	7'-8" ht.	B&B
PS	2	Prunus serrulata	Japanese Flowering Cherry	2'-2.5" cal	B&B
SR	10	Syringa reticulata 'Ivory Silk'	Ivory Lilac	2'-2.5" cal	B&B
TP	8	Thuja plicata	Western Redcedar	7'-8" ht.	B&B
SHRUBS					
AP	15	Aucuba japonica	Botolph Claydon Aucuba	5 gal.	
HA	46	Hydrangea arborescens	Hydrangea	5 gal.	
HQ	26	Hydrangea quercifolia	Oakleaf Hydrangea	7 gal.	
ICH	80	Ilex crenata 'Hedge'	Hedge Holly	5 gal.	5 STEMS 3/4" MIN
IG	43	Ilex glabra 'Compacta'	English Holly	18"-24" ht.	
KL	68	Kalmia latifolia	Mountain Laurel	18"-24" ht.	
RM	29	Rhododendron 'Roseum Superbum'	Roseum Rhody	2.5'-3" ht.	B&B
SJ	4	Spiraea japonica 'Little Princess'	Pink Dwarf Spiraea	2 gal.	
SM	19	Syringa meyeri 'Miss Kim'	Miss Kim Lilac	36" ht.	
SV	11	Syringa vulgaris - Wedgewood Blue	Common Lilac	4.5" ht.	B&B
SV	11	Syringa vulgaris - Albert Hallen	White Common Lilac	4.5" ht.	B&B
SV	11	Syringa vulgaris - Hugo Koster	Lavender Common Lilac	4.5" ht.	B&B
VI	11	Viburnum 'Maras'	Doublefile Viburnum	3-4" ht.	

GRASSES	PERENNIALS
CL 17 Chamaethamium latifolium	EP - Echinacea purpurea 'Kim's Knee High'
HM 285 Hakonechloa macro 'Aureola'	GM - Geranium macrorrhizum 'Bevan's Variety'
MS 41 Miscanthus sinensis 'Gracillimus'	HH 23 Hemerocallis 'Happy Return'
MSM 44 Miscanthus sinensis 'Morning Light'	HF - Hosta 'Francee'
PV 77 Panicum virgatum 'Shenandoah'	NW 77 Nepeta 'Blue Wonder'
PVC 109 Panicum virgatum 'Cloud Nine'	VM 1230 Vinca minor
Pa 16 Pennisetum slosserianum 'Hemelich'	

NOTES: See specification for lawn seed mix.

L-1



GRADING NOTES

1. Proposed Contour Interval is 1'-0"
2. Proposed grades indicate intent. Contractor shall verify elevations and make adjustments as required to meet field conditions and to provide positive drainage on all surfaces.
3. Grade evenly between all spot grades as noted and between all contours as shown. All surfaces must have positive pitch to drain.
4. Contractor shall provide dust control for all excavation and construction operations by watering. No other method will be approved.
5. Contractor is responsible for all repair of all damage due to his operations inside and outside of the limit of work line. Extend limit of work line as necessary to make all necessary utility connections.

PROJECT NAME
**HARVEY STREET
RESIDENCES**

PROJECT ADDRESS
**135 HARVEY STREET
CAMBRIDGE, MA**

CLIENT
**YOUNG INVESTMENT
LLC**

ARCHITECT
KHALSA DESIGN INC.



17 WALDO STREET, SUITE 400
SOMERVILLE, MA 02143
TELEPHONE 617-653-5322 FAX 617-651-2088

CONSULTANTS:

LANDSCAPE ARCHITECT
BB&B Design Associates
318 Harvard Street, Suite 25
Brookline, MA 02446
T: 617-735-1192
F: 617-489-8025
W: www.bb&bdesign.com grassandstone.com

CIVIL ENGINEER

VVP ASSOCIATES
132 Adams Street, 2nd Floor
Newton, MA 02459
T: 617-552-8271

REGISTRATION



Project number
Date: 03-02-2011
Drawn by: NA
Checked by: BH
Scale: 1/16"=1'-0"

REVISIONS

No.	Description	Date

L-02

GRADING
PLAN

HARVEY ST RESIDENCES