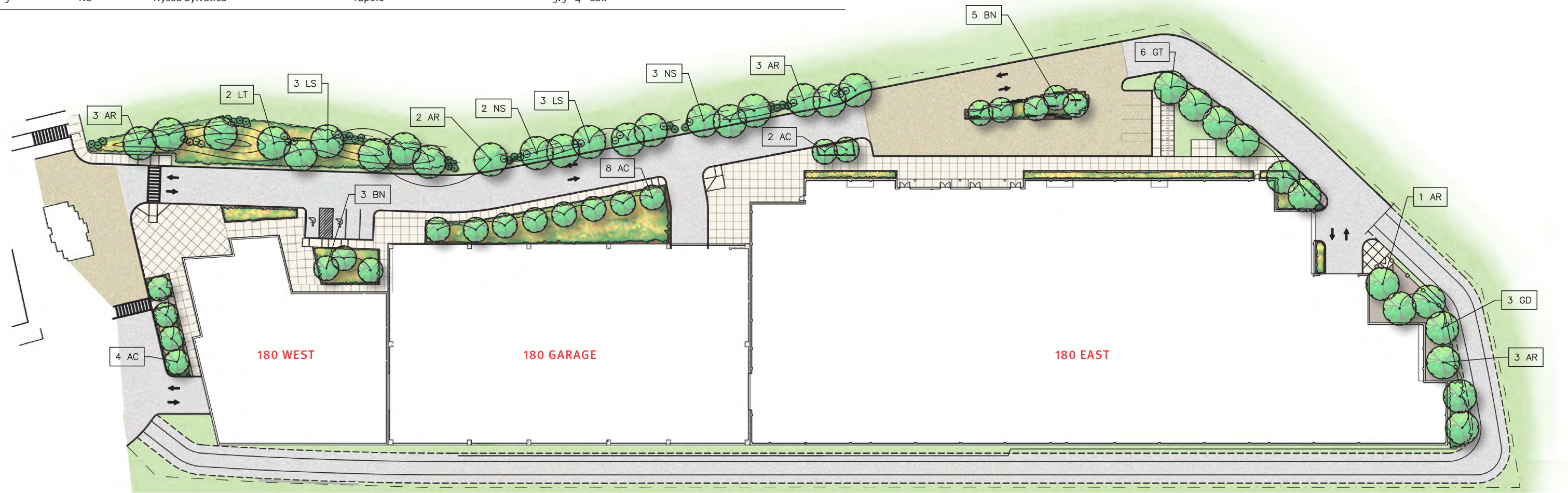


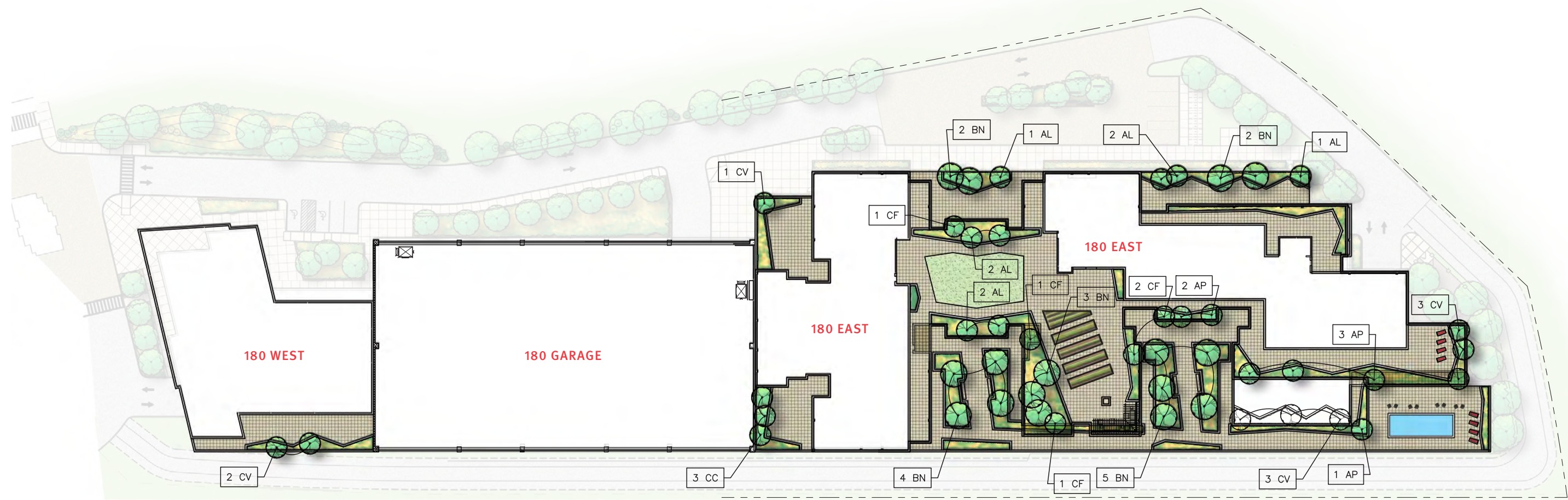
- 1'-6" - 2'-0" HIGH PLANTING BED W/ SEAT WALL, PLANTED W/ SMALL TREES, ORNAMENTAL GRASSES, AND PERENNIALS (A)
- 1'-0" HIGH VEGETABLE PLANTING BEDS (B)
- BENCHES / TABLES AND CHAIRS / LOUNGE CHAIRS (C)
- 2'-0" X 2'-0" PEDESTAL PAVERS (D)
- LOUNGE AREA W/ OUTDOOR FURNITURE / FIRE PIT / BBQ (E)
- 6" PLANTING DEPTH GREEN ROOF W/ SEDUM (F)

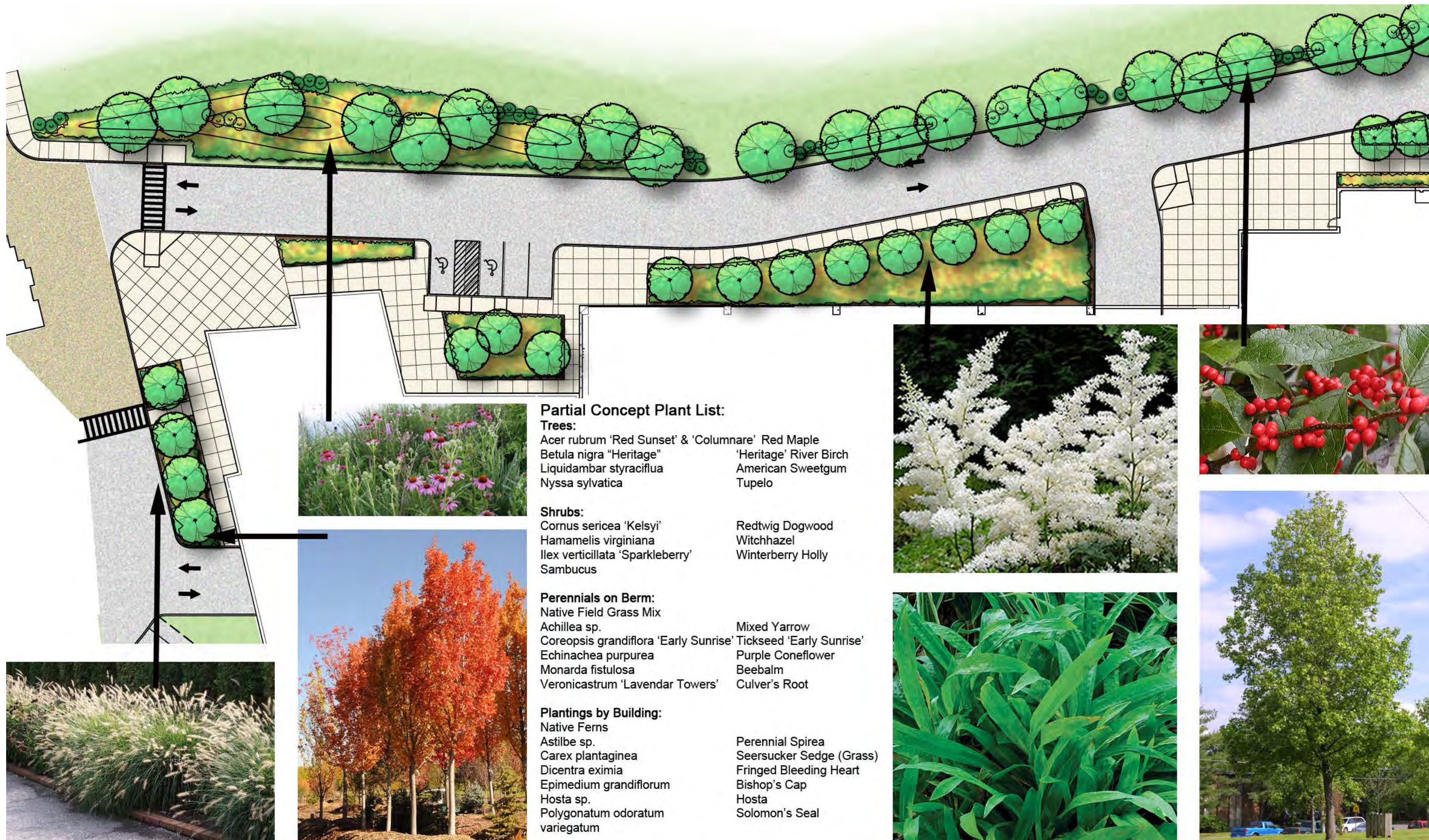


QUANTITY	SYMBOL	BOTANICAL NAME	COMMON NAME	SIZE	NOTES
12	AR	Acer Rubrum	Red Maple	3.5 - 4" Cal.	
14	AC	Acer Rubrum 'Columnare'	Columnar Red Maple	2.5 - 3" Cal.	
8	BN	Betula Nigra 'Heritage'	River Birch	3 - 3.5" Cal.	Single-stem
6	GT	Gleditsia Triacanthos "Shademaster"	Honey Locust	4 - 4.5" Cal.	
3	GD	Gymnocladus Dioicus	Kentucky Coffee Tree	4 - 4.5" Cal.	
6	LS	Liquidambar Styraciflua	Sweetgum	3.5 - 4" Cal.	
2	LT	Liriodendron Tulipifera	Tulip Tree	3.5 - 4" Cal.	
5	NS	Nyssa Sylvatica	Tupelo	3.5 - 4" Cal.	



QUANTITY	SYMBOL	BOTANICAL NAME	COMMON NAME	SIZE	NOTES
6	AP	Acer Palmatum 'Tobiosho'	Green Japanese Maple	2.5 - 3" Cal.	Single-stem
8	AL	Amelanchier Laevis	Serviceberry	4" minimum total Cal.	Multi-stem
16	BN	Betula Nigra 'Little King'	River Birch	4" minimum total Cal.	Multi-stem
3	CC	Carpinus Caroliniana 'Fastigiata'	Columnar Hornbeam	3 - 3.5" Cal.	Single-stem
5	CF	Cornus Florida 'Cherokee Brave'	Pink Flowering Dogwood	2.5 - 3" Cal.	Single-stem
9	CV	Craetagus Viridis 'Winter King'	Hawthorn	3 - 3.5" Cal.	Single-stem





Partial Concept Plant List:

Trees:

Acer rubrum 'Red Sunset' & 'Columnare' Red Maple
Betula nigra "Heritage" 'Heritage' River Birch
Liquidambar styraciflua American Sweetgum
Nyssa sylvatica Tupelo

Shrubs:

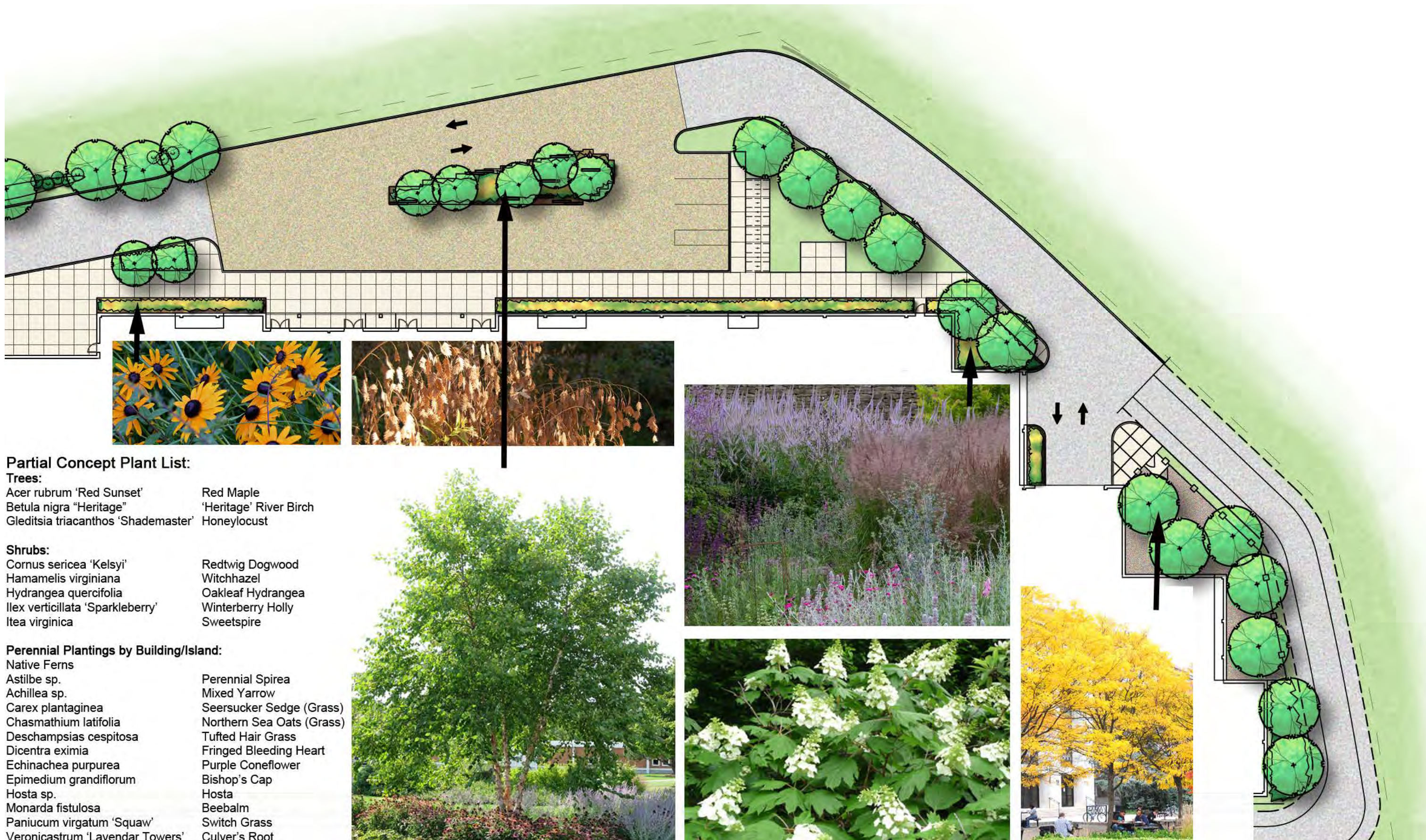
Cornus sericea 'Kelsyi' Redtwig Dogwood
Hamamelis virginiana Witchhazel
Ilex verticillata 'Sparkleberry' Winterberry Holly
Sambucus

Perennials on Berm:

Native Field Grass Mix
Achillea sp. Mixed Yarrow
Coreopsis grandiflora 'Early Sunrise' Tickseed 'Early Sunrise'
Echinacea purpurea Purple Coneflower
Monarda fistulosa Beebalm
Veronicastrum 'Lavendar Towers' Culver's Root

Plantings by Building:

Native Ferns
Astilbe sp. Perennial Spirea
Carex plantaginea Seersucker Sedge (Grass)
Dicentra eximia Fringed Bleeding Heart
Epimedium grandiflorum Bishop's Cap
Hosta sp. Hosta
Polygonatum odoratum variegatum Solomon's Seal

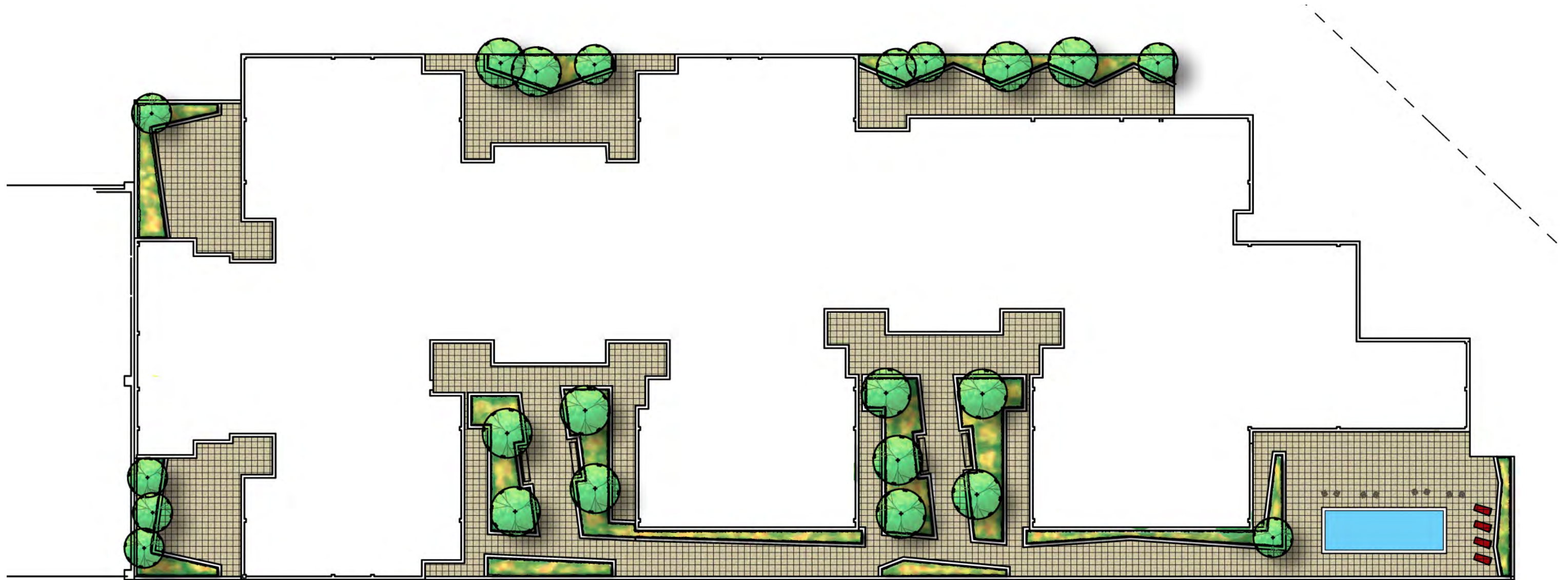


Partial Concept Plant List:

- Trees:**
Acer rubrum 'Red Sunset' Red Maple
Betula nigra "Heritage" 'Heritage' River Birch
Gleditsia triacanthos 'Shademaster' Honeylocust

- Shrubs:**
Cornus sericea 'Kelsyi' Redtwig Dogwood
Hamamelis virginiana Witchhazel
Hydrangea quercifolia Oakleaf Hydrangea
Ilex verticillata 'Sparkleberry' Winterberry Holly
Itea virginica Sweetspire

- Perennial Plantings by Building/Island:**
- | | |
|--|---------------------------|
| Native Ferns | Perennial Spirea |
| <i>Astilbe</i> sp. | Mixed Yarrow |
| <i>Achillea</i> sp. | Seersucker Sedge (Grass) |
| <i>Carex plantaginea</i> | Northern Sea Oats (Grass) |
| <i>Chasmathium latifolia</i> | Tufted Hair Grass |
| <i>Deschampsias cespitosa</i> | Fringed Bleeding Heart |
| <i>Dicentra eximia</i> | Purple Coneflower |
| <i>Echinacea purpurea</i> | Bishop's Cap |
| <i>Epimedium grandiflorum</i> | Hosta |
| <i>Hosta</i> sp. | Beebalm |
| <i>Monarda fistulosa</i> | Switch Grass |
| <i>Panicum virgatum</i> 'Squaw' | Culver's Root |
| <i>Veronicastrum</i> 'Lavendar Towers' | |



Partial Concept Plant List:

Trees:

Acer palmatum 'Tobiosho'
Betula nigra "Heritage"
Carpinus caroliniana 'Fastigiata'
Craetagus viridis 'Winter King'

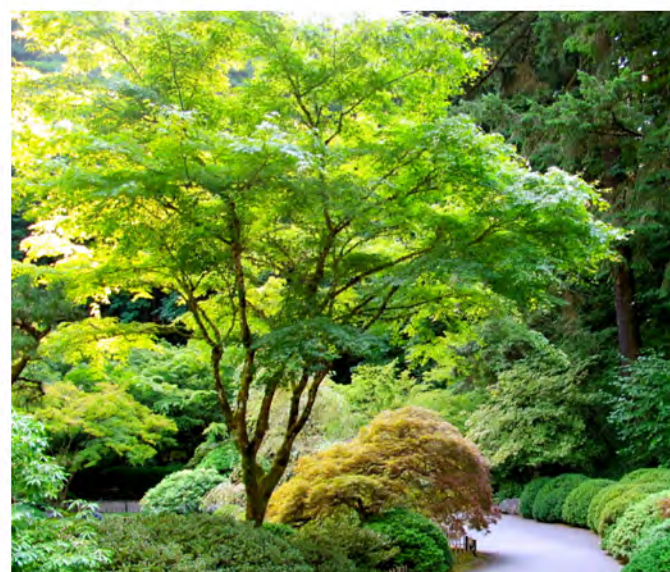
Green Japanese Maple
'Heritage' River Birch
Columnar Hornbeam
Hawthorn

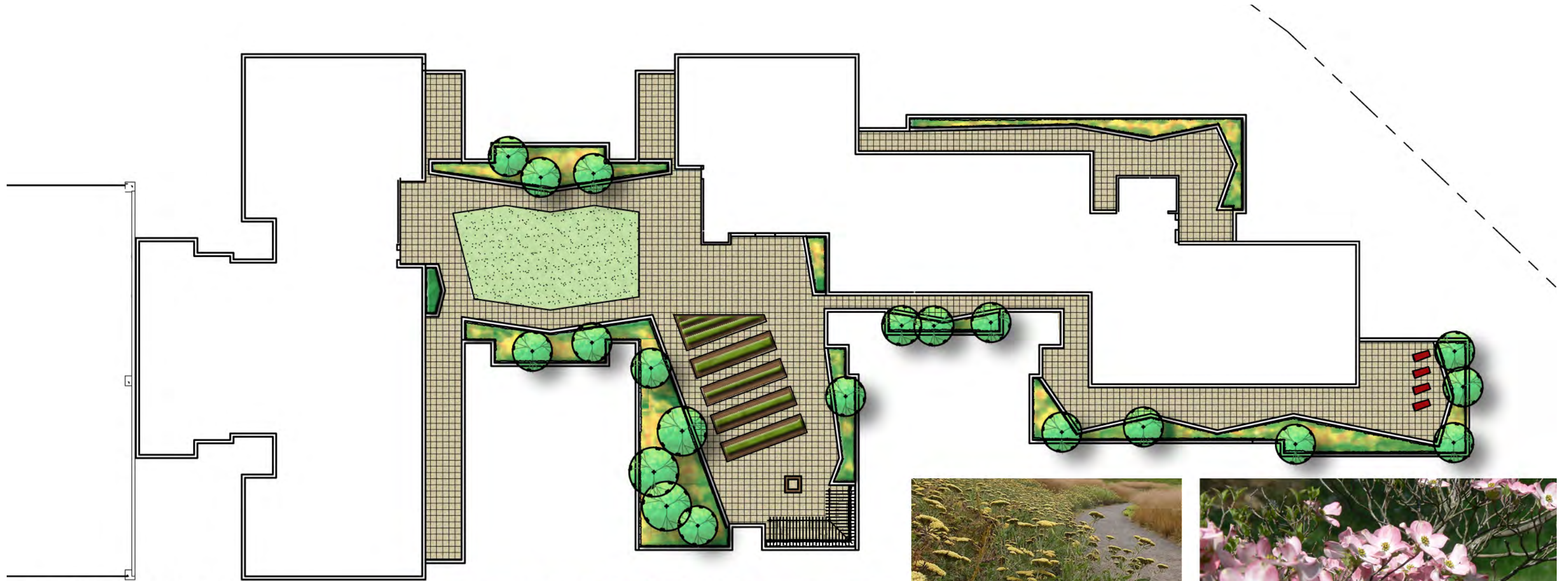
Perennial Plantings on Terraces:

Native Ferns

Astilbe sp.
Achillea sp.
Carex plantaginea
Chasmathium latifolia
Deschampsias cespitosa
Dicentra eximia
Echinacea purpurea
Epimedium grandiflorum
Hosta sp.

Perennial Spirea
Mixed Yarrow
Seersucker Sedge (Grass)
Northern Sea Oats (Grass)
Tufted Hair Grass
Fringed Bleeding Heart
Purple Coneflower
Bishop's Cap
Hosta





Partial Concept Plant List:

Trees:

Acer palmatum 'Tobiosho'	Green Japanese Maple
Amelanchier laevis	Serviceberry
Cornus florida 'Cherokee Brave'	Pink Flowering Dogwood
Craetagus viridis 'Winter King'	Hawthorn

Sedum Greenroof

Vegetable Gardens

Perennial Plantings on Terraces:

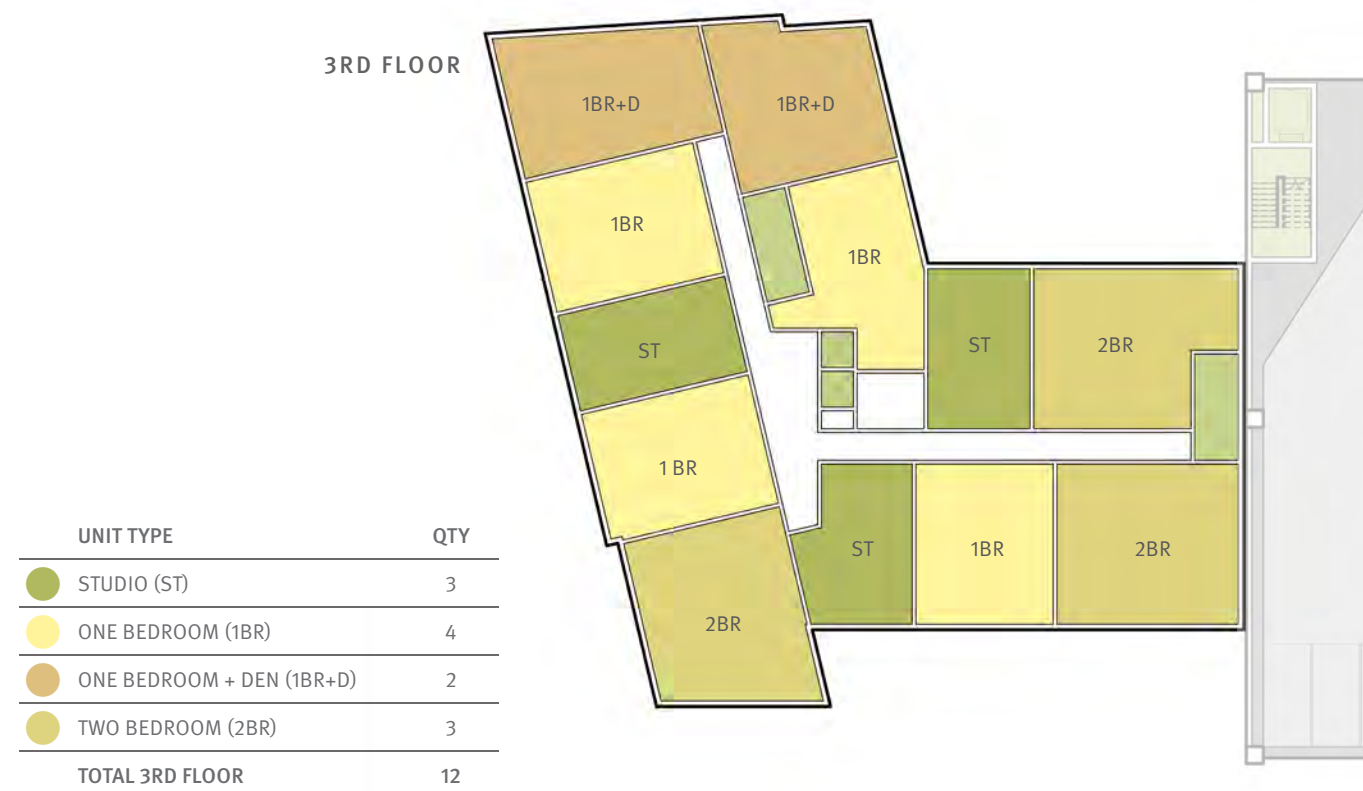
Native Ferns	Perennial Spirea
Astilbe sp.	Mixed Yarrow
Achillea sp.	Seersucker Sedge (Grass)
Carex plantaginea	Northern Sea Oats (Grass)
Chasmathium latifolia	Tufted Hair Grass
Deschampsias cespitosa	Purple Coneflower
Echinachea purpurea	Hosta
Hosta sp.	Dwarf Fountain Grass
Pennisetum alopecuroides 'Hameln'	













NORTH ELEVATION



WEST ELEVATION



SOUTH ELEVATION

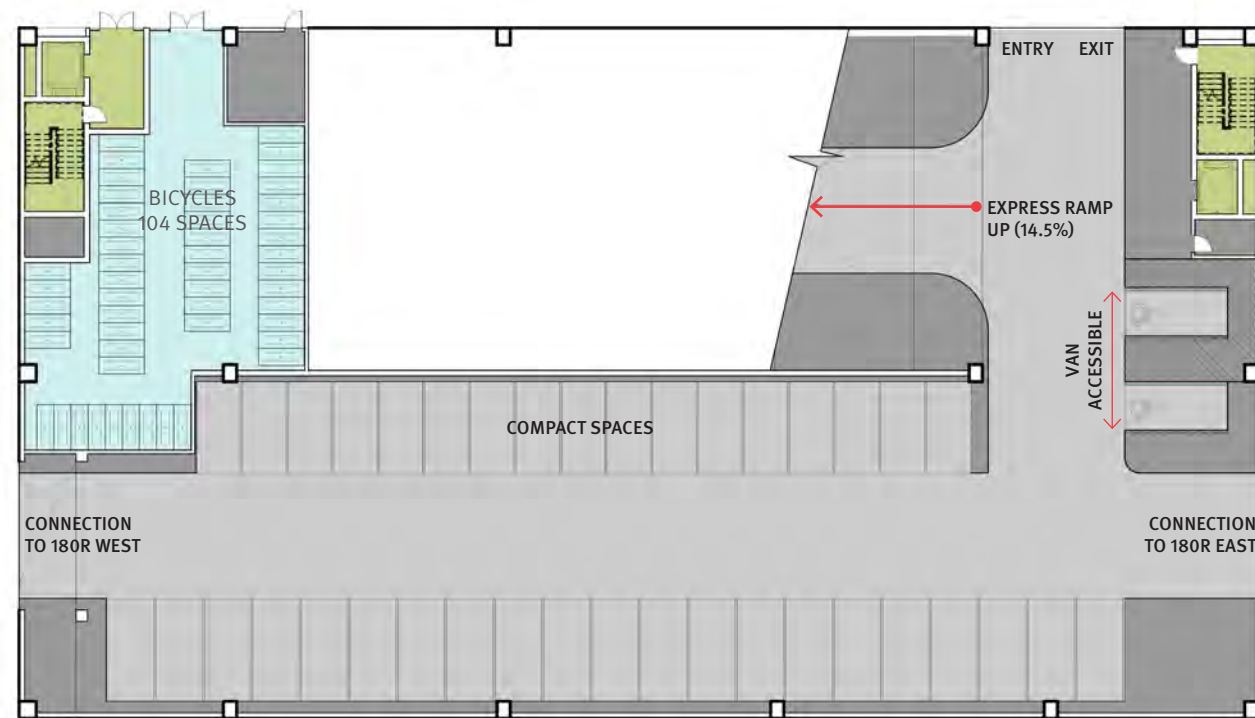


AERIAL FROM NORTH WEST

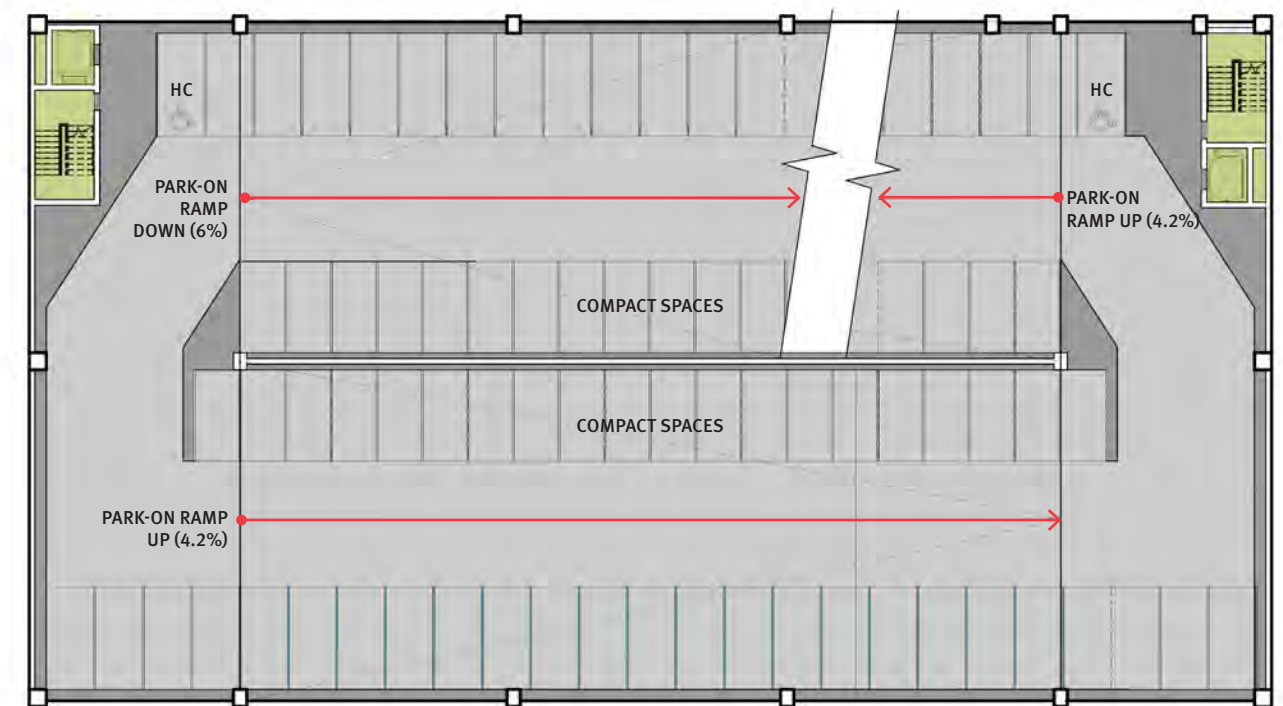


AERIAL FROM SOUTH EAST

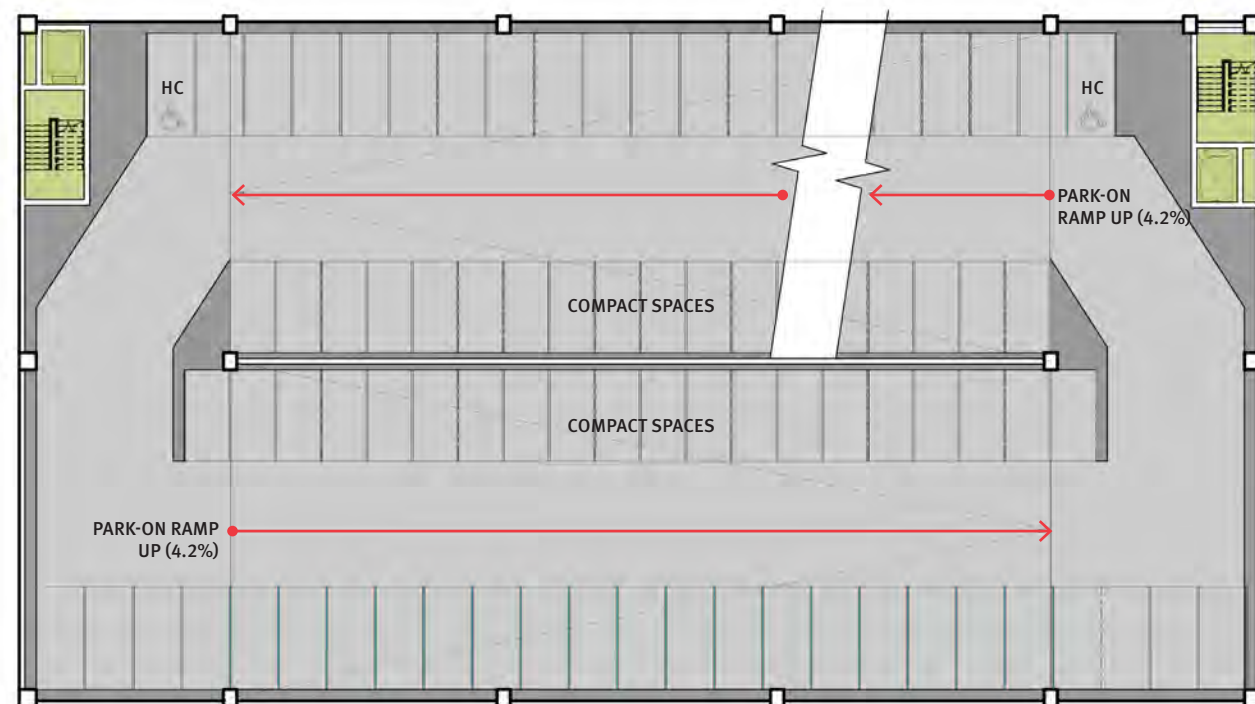




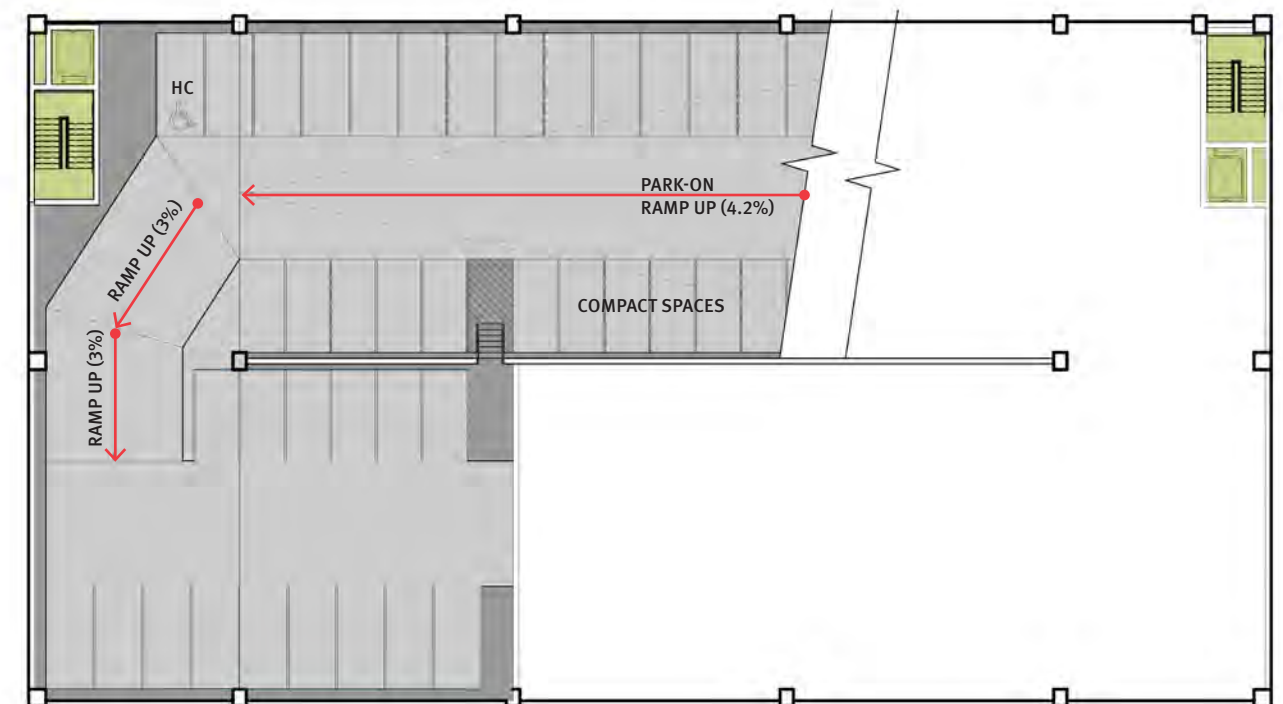
GROUND FLOOR // 40 SPACES TOTAL / 17 COMPACT SPACES



2ND FLOOR // 83 SPACES TOTAL / 38 COMPACT SPACES



3RD - 8TH FLOOR // 83 SPACES TOTAL / 38 COMPACT SPACES



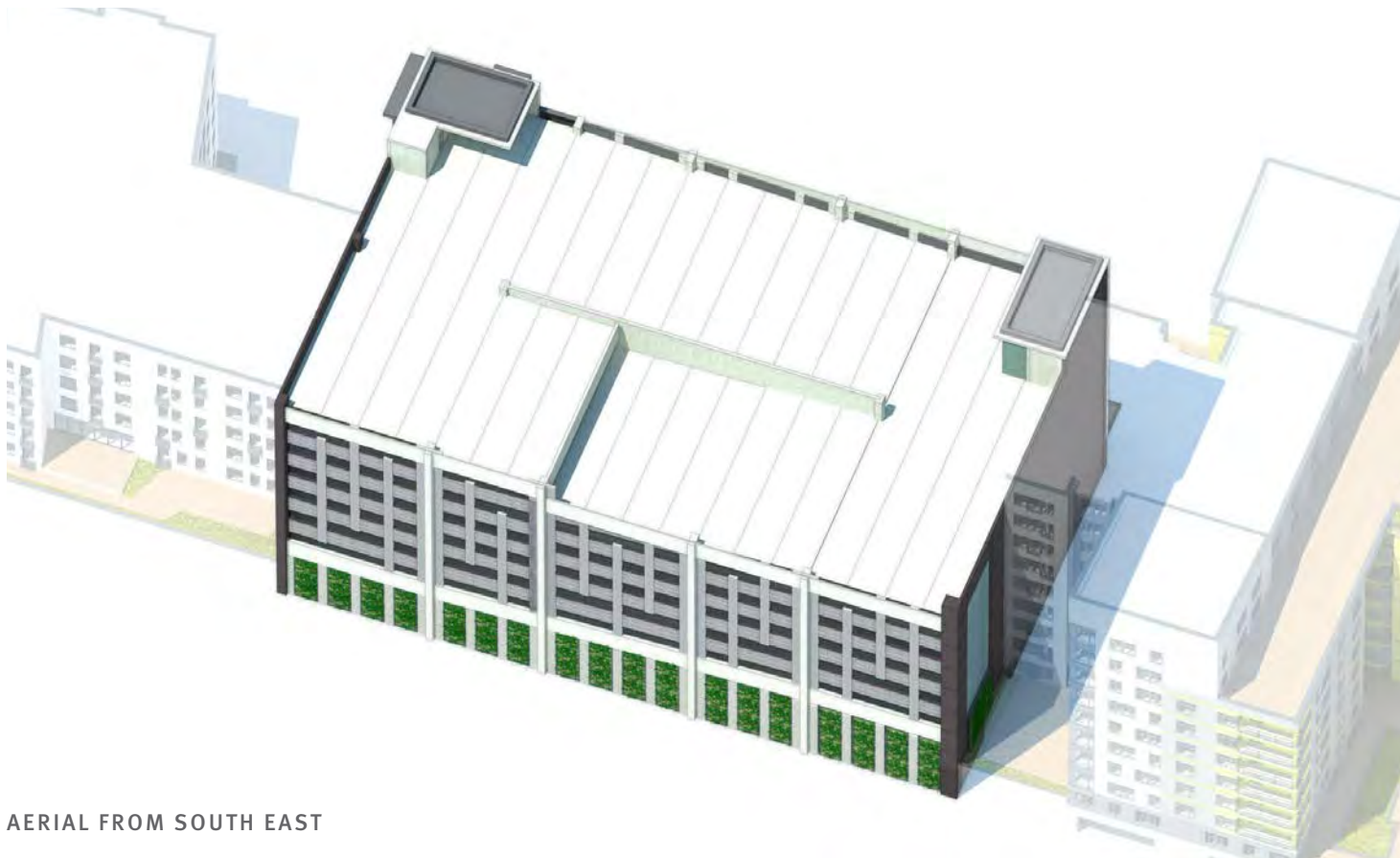
ROOF PLAN // 40 SPACES TOTAL / 18 COMPACT SPACES



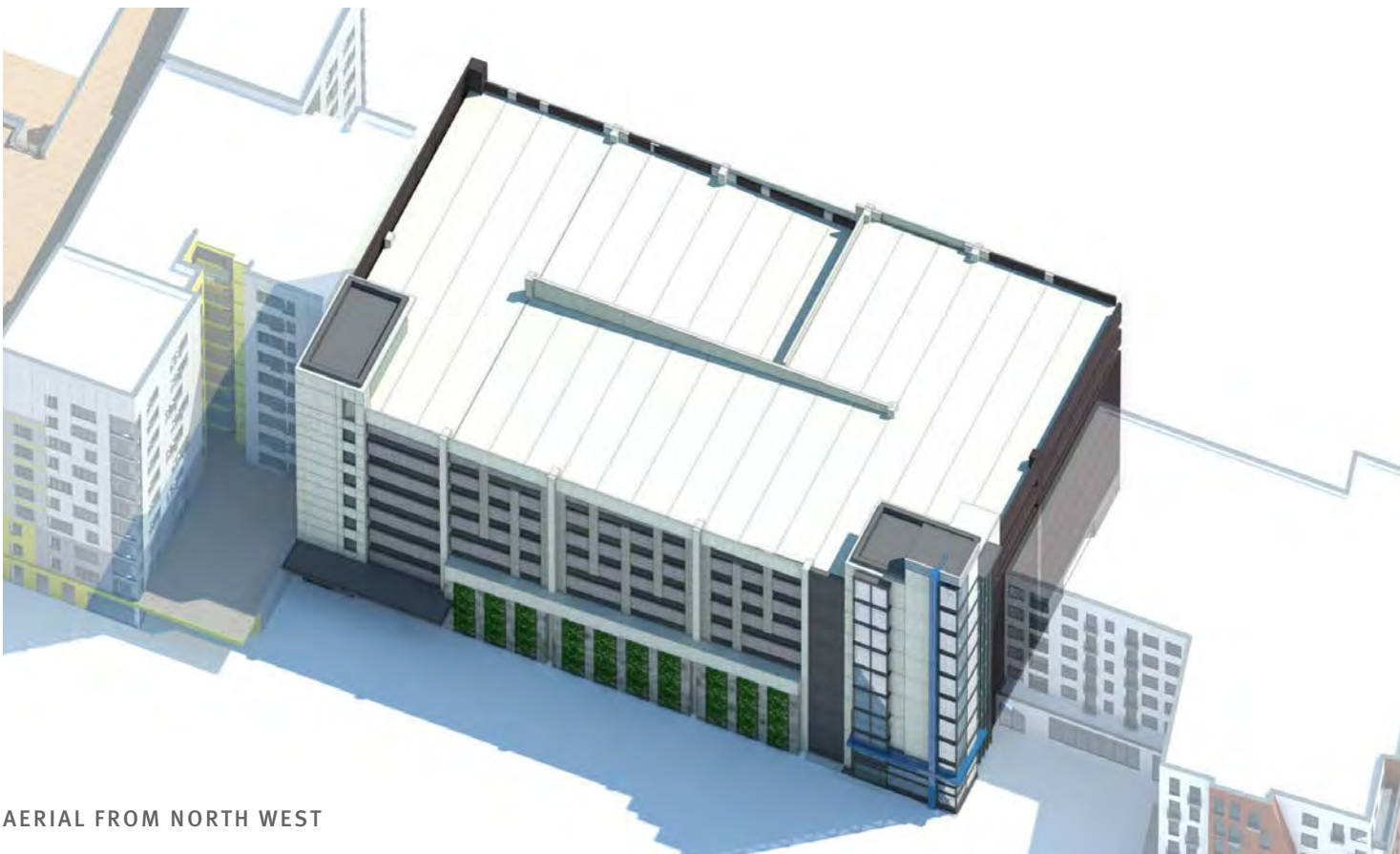
NORTH ELEVATION



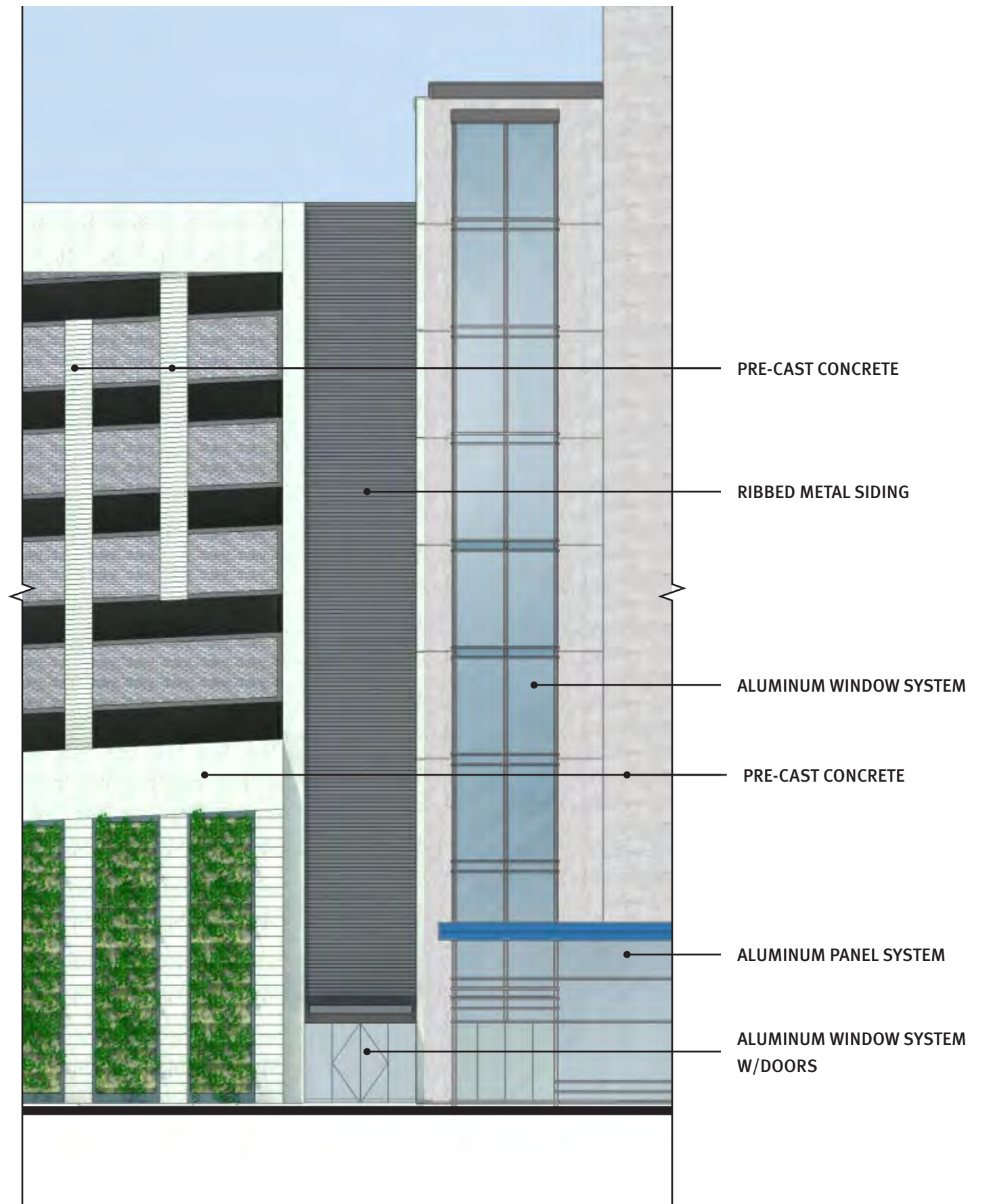
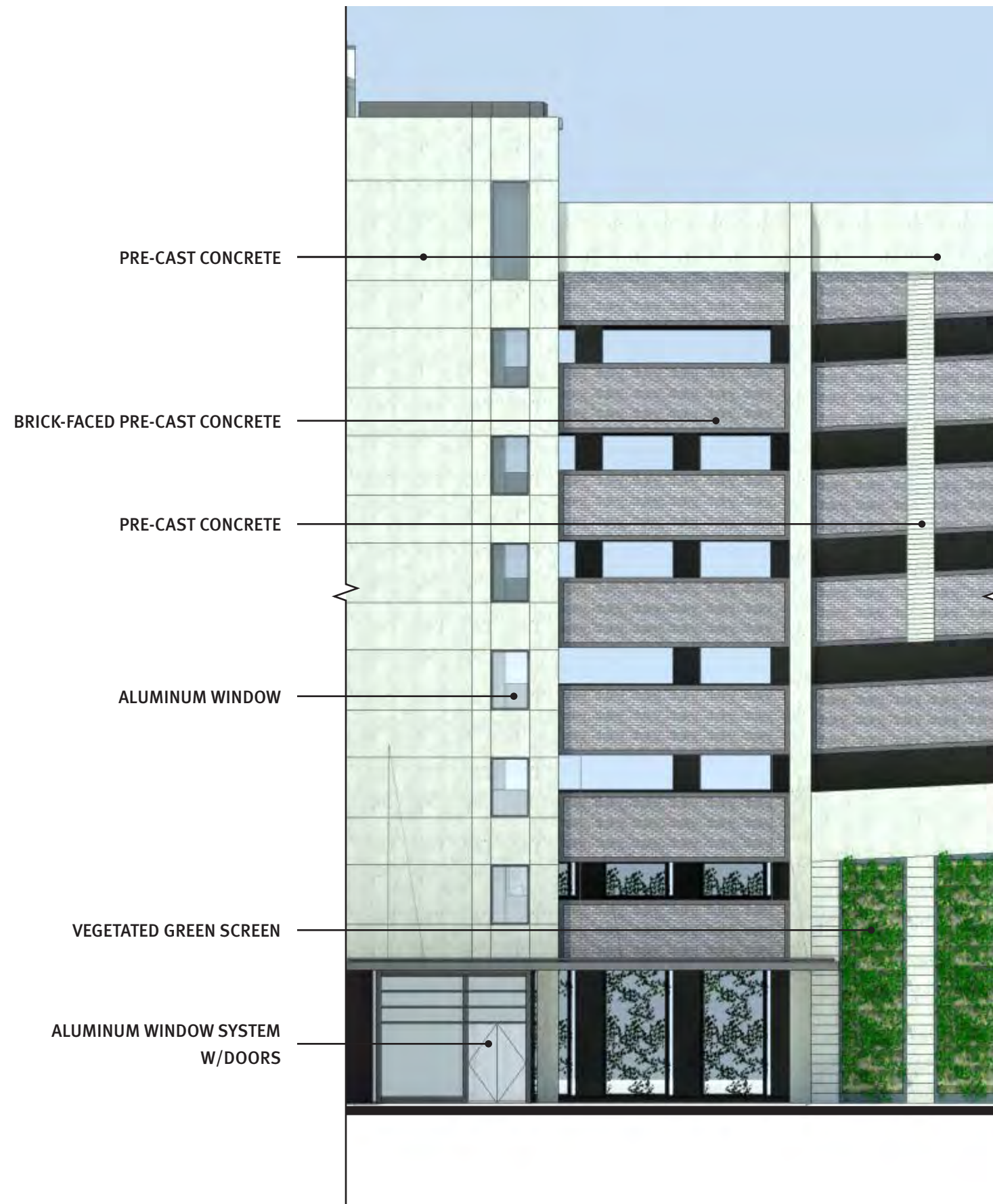
SOUTH ELEVATION



AERIAL FROM SOUTH EAST



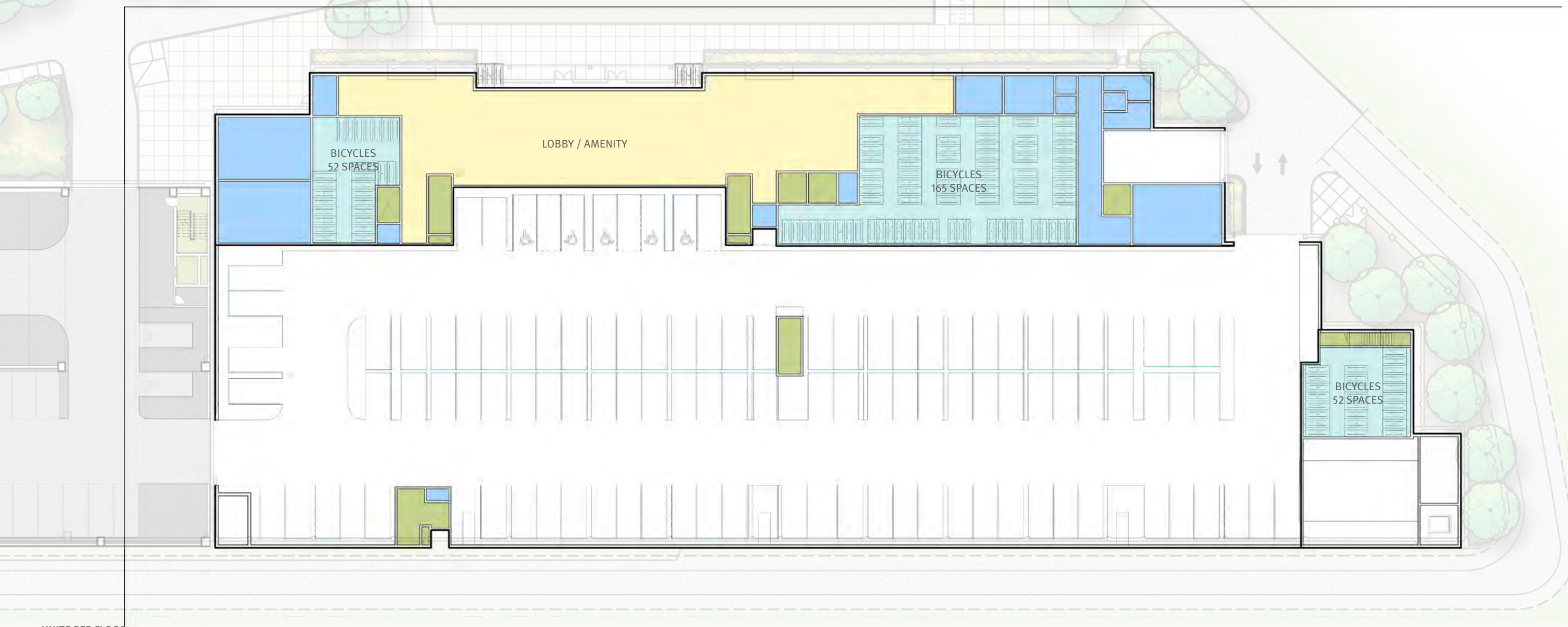
AERIAL FROM NORTH WEST











UNITS PER FLOOR

2	34
3	41
4	41
5	41
6	41
7	41
8	41
9	22
10	18
TOTAL UNITS	320