



# Cambridge Police Department BridgeStat

June 2014

Produced by the Crime Analysis Unit



# Part I Total Crime

Serious crime in Cambridge so far this year has experienced a significant decrease of 13% from the first two quarters of 2013, and when measured against the five-year weighted average for the same time frame, a 22% decline (339 fewer serious crimes than the projected total) has been recorded.

The property crimes of Larceny & Burglary are the key indicators and the driving forces behind the overall downward spiral of crime. **The index crime of larceny has dropped 13% and a 26% reduction in burglary has been reported.** Housebreaks (-34%), larceny from motor vehicles (-20%), and larceny from the person (-42%) were the categories of incidents fueling the declining crime numbers.

A detailed analysis of all statistics indicates that there were **160 fewer property crimes reported** for the first six months of 2014, which indicates a **13% drop off** when measured against the 2013 statistics.

**Violent crime has slipped 11% over the first 180 days of 2014 with 18 fewer crimes against the person counted** than in the first six months of last year.

	4 Week Snapshot			Year to Date			Five Year	
	5/6-6/2	6/3-6/30	Change	2013	2014	Change	Avg	Change
Total Violent Crime	25	30	20%	162	144	-11%	188	-23%
Total Property Crime	204	210	3%	1223	1063	-13%	1358	-22%
Total Part I Crime	229	240	5%	1385	1207	-13%	1546	-22%



# Part I Property Crime

Property crime is registering a 13% decrease below the number reported for the first two quarters of 2013 and recorded a substantial 22% decline below the five-year average. The only property categories to register increases so far this year are small increases in auto theft, larceny from residence, bike larcenies, and commercial burglary. Nine of the fifteen indexes associated with property crime are in the green (on the decline) so far in 2014. The rise in auto theft can be attributed to the historically low total associated with 2013 for this crime type.

	4 Week Snapshot				Year to Date				Five Year	
	5/6-6/2	6/3-6/30	Change		2013	2014	Change		Avg	Change
<b>Burglary</b>	<b>12</b>	<b>22</b>	<b>83%</b>		<b>166</b>	<b>123</b>	<b>-26%</b>		<b>204</b>	<b>-40%</b>
Commercial Break	5	2	-60%		23	28	22%		34	-18%
Housebreak	7	20	186%		143	95	-34%		170	-44%
<b>Larceny</b>	<b>180</b>	<b>173</b>	<b>-4%</b>		<b>1013</b>	<b>884</b>	<b>-13%</b>		<b>1092</b>	<b>-19%</b>
Larceny (Misc)	3	6	100%		11	14	27%		15	-7%
Larceny from Building	42	20	-52%		189	173	-8%		190	-9%
Larceny from MV	36	35	-3%		250	201	-20%		301	-33%
Larceny from Person	18	16	-11%		172	99	-42%		170	-42%
Larceny from Residence	19	10	-47%		72	82	14%		90	-9%
Larceny of Bicycle	26	61	135%		121	123	2%		125	-2%
Larceny of Plate	4	2	-50%		12	18	50%		18	0%
Larceny of Services	4	0	-100%		12	6	-50%		11	-45%
Shoplifting	28	23	-18%		174	168	-3%		174	-3%
<b>Auto Theft</b>	<b>12</b>	<b>15</b>	<b>25%</b>		<b>44</b>	<b>56</b>	<b>27%</b>		<b>62</b>	<b>-10%</b>
<b>Total Property Crime</b>	<b>204</b>	<b>210</b>	<b>3%</b>		<b>1223</b>	<b>1063</b>	<b>-13%</b>		<b>1358</b>	<b>-22%</b>



# Part I Violent Crime

- The five-year weighted average for violent crime in Cambridge for the first two quarters of the year is 188 incidents. For the first six months of 2014, there were 144 violent crimes recorded in the City, 18 incidents below last year (-11%) and 44 violent crimes under the total forecasted for this period (-23%).
- The increase in commercial robberies from 8 to 14 incidents should be tempered by the fact that this crime has been recording historic lows in Cambridge in recent years. Street robbery dropped an astounding 53% when compared with 2013 with no spatial or temporal patterns identified so far in 2014. Aggravated assaults remained relatively unchanged from the totals for the first two quarters of 2013.

	<u>4 Week Snapshot</u>				<u>Year to Date</u>				<u>Five Year</u>	
	5/6-6/2	6/3-6/30	Change		2013	2014	Change		Avg	Change
Homicide	0	0	IN-CALC		2	1	-50%		1	0%
Rape	1	3	200%		10	15	50%		13	15%
Robbery	5	6	20%		53	35	-34%		63	-44%
Commercial Robbery	2	2	0%		8	14	75%		11	27%
Street Robbery	3	4	33%		45	21	-53%		52	-60%
Aggravated Assault	19	21	11%		97	93	-4%		111	-16%
Total Violent Crime	25	30	20%		162	144	-11%		188	-23%



# MURDER

*No Patterns*

- The only murder of 2014 involved Malia Gomez, 40, of 396 Putnam Ave, who has been charged in the death of Dana Robinson. Gomez admitted to stabbing Robinson following an argument. Robinson died at Beth Israel Hospital and Gomez was charged with armed assault with the intent to murder, assault and battery with a dangerous weapon, and assault and battery with a dangerous weapon causing serious bodily injury. On April 1<sup>st</sup>, 2014, Malia Gomez was indicted on First Degree Murder.
- 30 of the 36 murders in Cambridge since 1995 have been cleared by arrest or by the suicide of the perpetrator, which translates to an 83% clearance rate.
- On June 18th, 2014, The Massachusetts Supreme Judicial Court upheld the conviction of Jabrai Copney, who was sentenced to life without parole following the 2009 murder of Cambridge resident Justin Cosby at Harvard University. Copney was convicted of murder in the first degree after an attempted armed robbery in May 2009, in which Cosby was shot and killed.

Change\*

Last 4 Weeks

0%

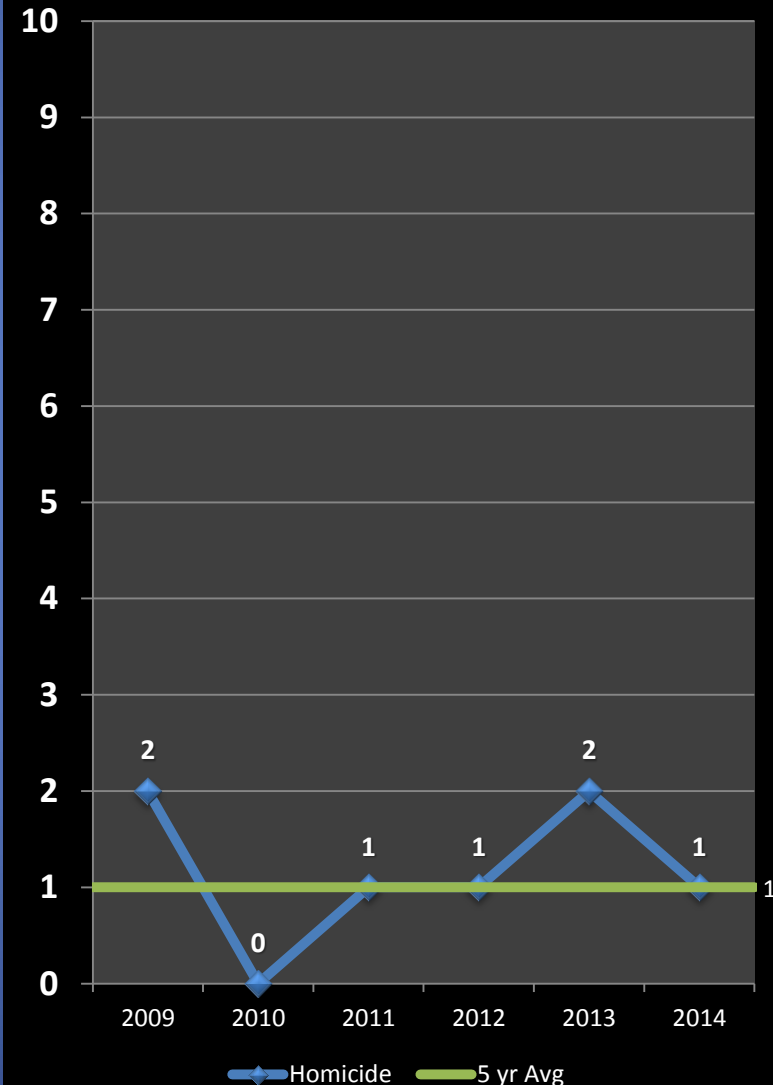
Previous Year

-50%

5 Year Average

0%

\*IN -CAL: Percentages are not calculated for numbers so small as to present a statistically misleading percentage.







# Unsolved Murders: 1999 to 2014

Cambridge Police BridgeStat

**Colin Burton**, 30, of Dorchester, was shot and killed outside of Hi - Fi Pizza on Mass Ave in Central Square on September 18<sup>th</sup>, 1999. Burton was talking with the occupants of a Ford Explorer when the subject in the passenger seat fired through the window. Two suspects fled the scene. The case remains under active investigation.



September 18, 1999, Mass Ave



April 5, 2002, Mass Ave

**Ian Gray**, 19, of Mattapan, was in an argument outside of the Rhythm & Spice restaurant that spilled out onto Mass Ave. A suspect that had left the scene returned with a group of people and a fight ensued. A knife was produced during the altercation and four gunshots were fired, fatally wounding Gray. This case remains open.

On June 17<sup>th</sup>, 2002 at 7:00PM, **Ricardo Williams**, 27, of Malden, was found in the driver's seat of a motor vehicle suffering from a gunshot wound to his face. Williams was taken to CCH where he was pronounced dead. This case remains open.



June 17, 2002, Windsor St.

**\*Anyone with information about these crimes is asked to contact CPD at 617-349-3370.\***



# Unsolved Murders: 1999 to 2014

**Jason Ellcock**, 33, of Malden, formerly of Cambridge and father of three, was found with multiple gunshot wounds in front of the driveway to 364 Rindge Ave at 3:05 AM on the night of June 16<sup>th</sup>, 2009. He was pronounced dead at the scene. This incident remains under investigation.



June 16, 2009, Rindge Ave



March 12, 2011, Brookline St.

**James Lauture**, 30, of Cambridge, was sitting in a vehicle near Brookline and Watson Streets just after midnight on Saturday, March 12<sup>th</sup>, 2011, when an unknown gunman opened fire. The occupants in the car were able to drive to Central Square. Lauture died from multiple gunshot wounds. The other man in the vehicle survived. This case remains open.

On June 3<sup>rd</sup>, 2012, **Charlene Holmes**, 16, of Cambridge was shot while sitting on a porch on Willow Street. She later succumbed to her wounds at the hospital. The investigation into this incident remains active, but no arrests have been made to date.



June 3, 2012, Willow St

**\*Anyone with information about these crimes is asked to contact CPD at 617-349-3370.\***



# RAPE

## No Patterns

- The violent index crime of Rape has increased from 10 incidents in the first two quarters of 2013 to 15 reported crimes over the first six months of 2014.
- In January of 2014, three rapes were recorded in Cambridge. Three more non-stranger rapes were reported in March. The first attempted stranger rape of the year occurred on Richdale Ave on April 16<sup>th</sup>. The other rapes during April included two acquaintance incidents and a domestic scenario. The lone rape reported in Cambridge in May was classified as a contact-related incident. There were three rapes reported in Cambridge during June: two acquaintance scenarios and a domestic.
- Marcos Colono was found guilty by a Suffolk Superior Court jury on Wednesday, June 25, of raping and assaulting two women in a 2008 Allston home invasion. Colono was already serving a sentence of up to 85 years in prison for raping an 11-year-old boy and nearly decapitating the father in a 2010 Cambridge home invasion. The CPD and Boston Police linked DNA from the 2010 Cambridge attacks to the previously unsolved 2008 Allston rapes.

### Percent Change

Last 4 Weeks

**+200%**

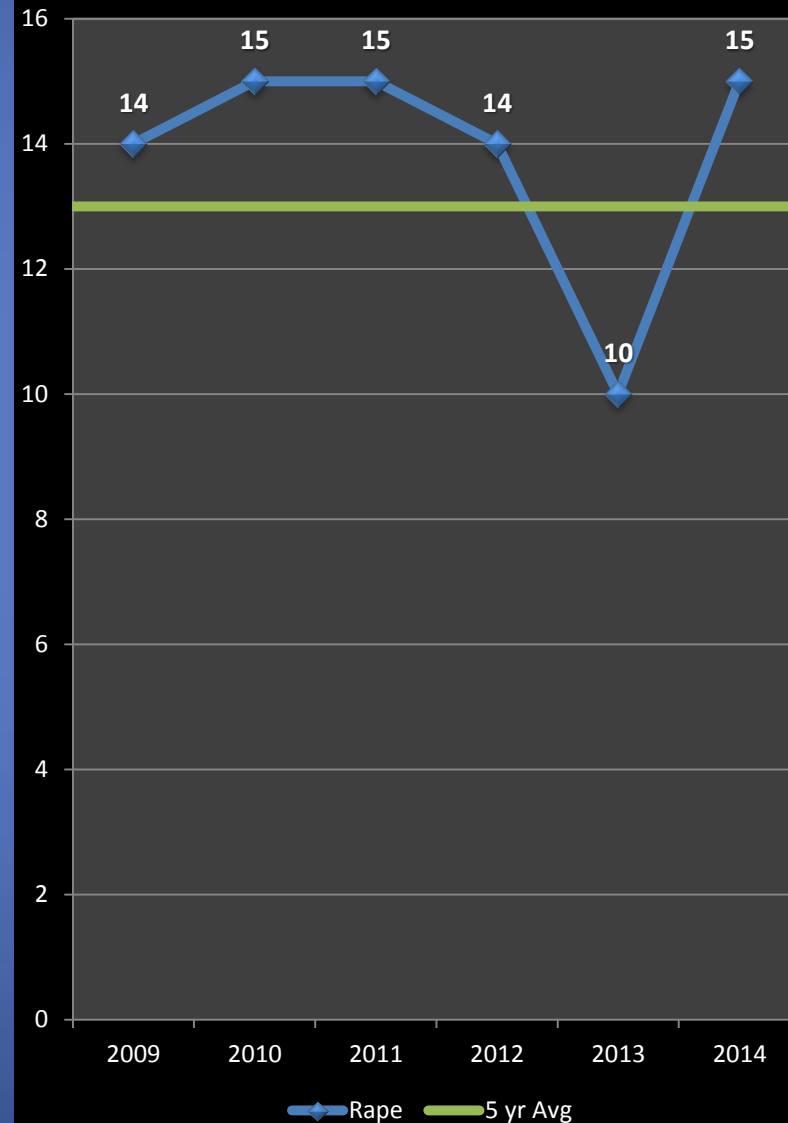
Previous Year

**+50%**

5 Year Average

**+15%**

\*IN -CAL: Percentages are not calculated for numbers so small as to present a statistically misleading percentage.







# ROBBERY

*No Patterns*

- The five-year average for overall robbery in Cambridge for the first two quarters of the year is 63 incidents. Over the first six months of 2014, 35 robberies were reported, which translates to a 44% decline below the projected total.
- There were six commercial robberies in the first five weeks of 2014. That spree stopped on February 8<sup>th</sup>, with only nine incidents recorded over the next five months. Arrests have been made in 8 of the 15 robberies. The third bank robbery of the year in Cambridge occurred on June 2<sup>nd</sup> at the Eastern bank in Central Square. An arrest was made the next week when a suspect was arrested in Somerville for a similar incident and was identified by a witness from the Cambridge robbery.
- Street robberies declined 21% in Cambridge in 2013 and that consistent drop has continued over the first six months of 2014 with a significant decline of 53% when compared with last year's total for the same time period. The total of 21 street robberies for the first two quarters of the year is a remarkably low number for Cambridge. There has not been a street robbery pattern identified in Cambridge in over 18 months.

## Percent Change

Last 4 Weeks

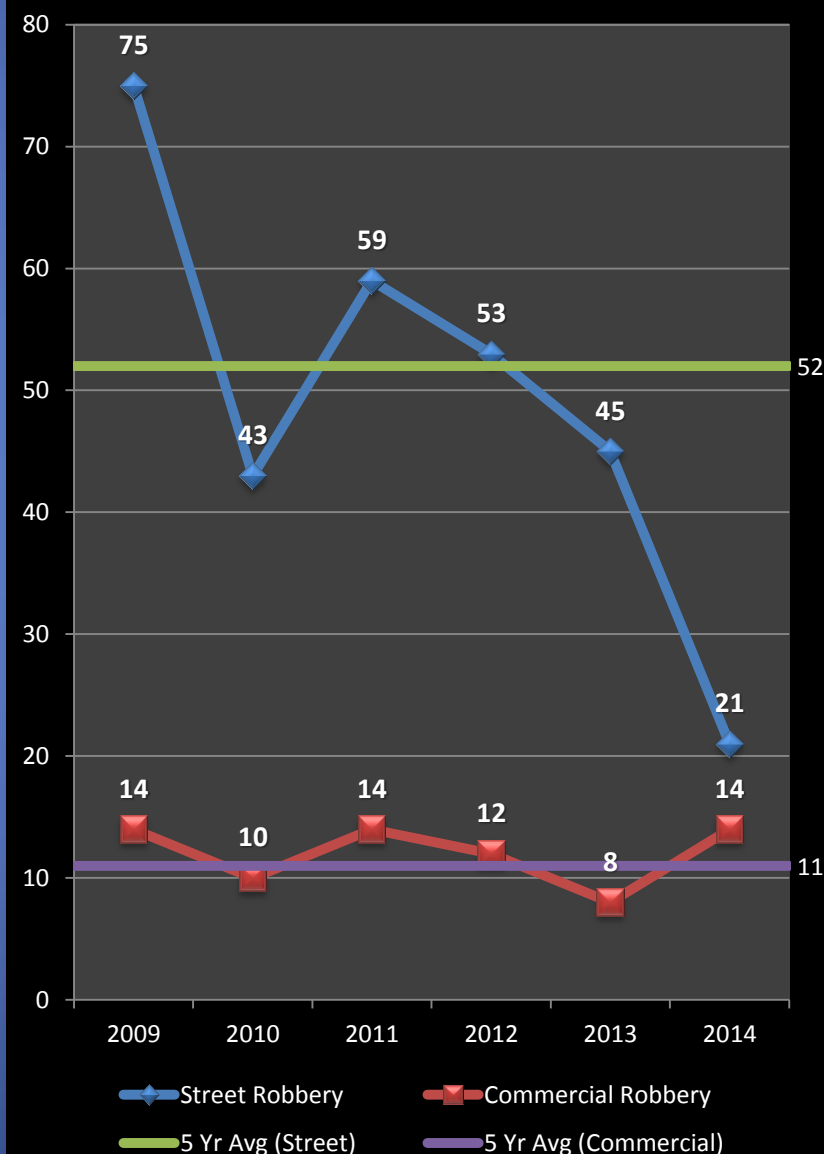
**+20%**

Previous Year

**-34%**

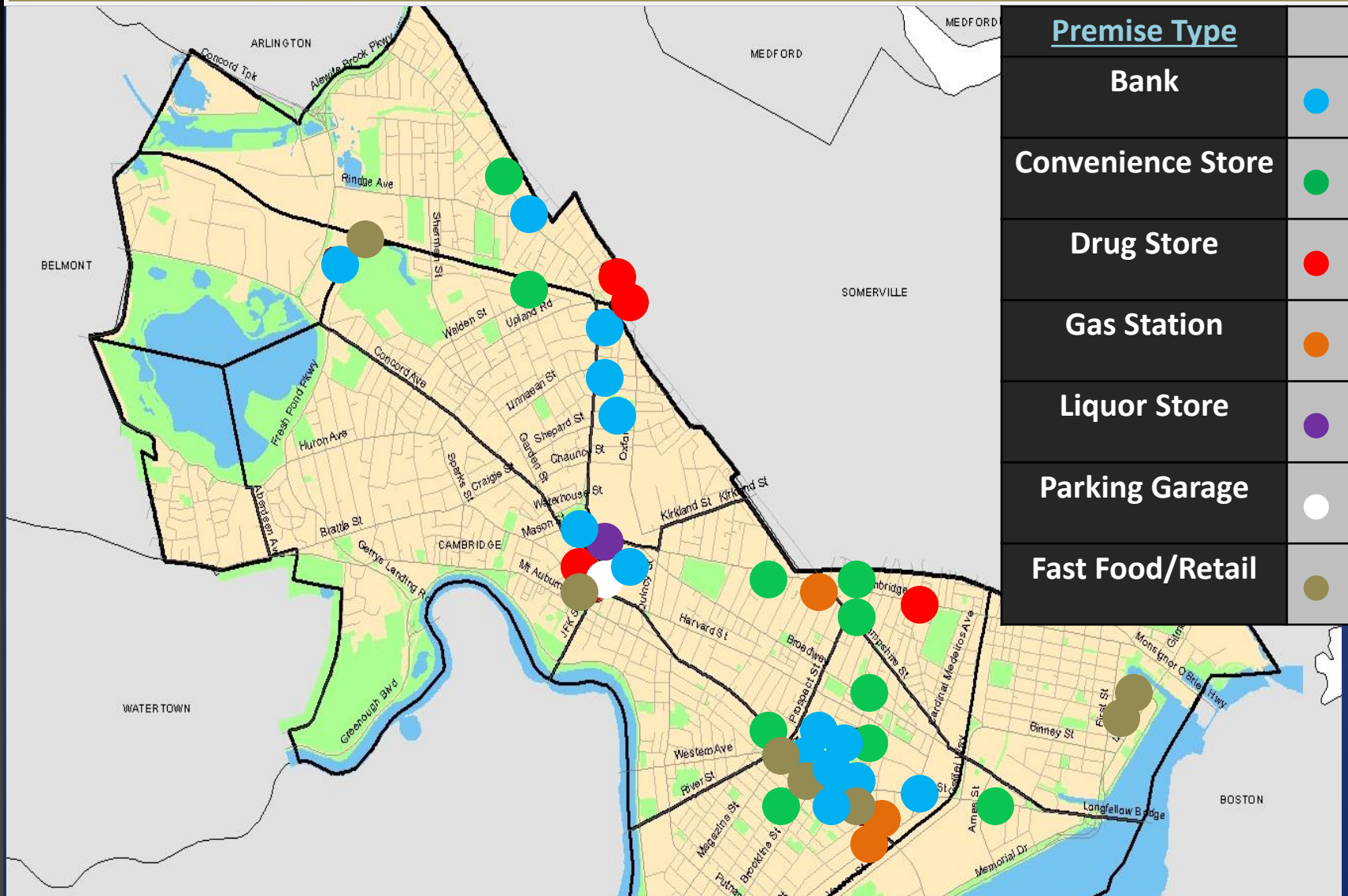
5 Year Average

**-44%**





# Commercial Robberies by Premise Type: 1.1.13 to 6.30.14



There have been 44 commercial robberies at: (14) banks, (11) convenience stores, (4) drug stores, (3) gas stations, (2) fast food chains, a liquor store, a parking garage, and (8) misc. retail locations.

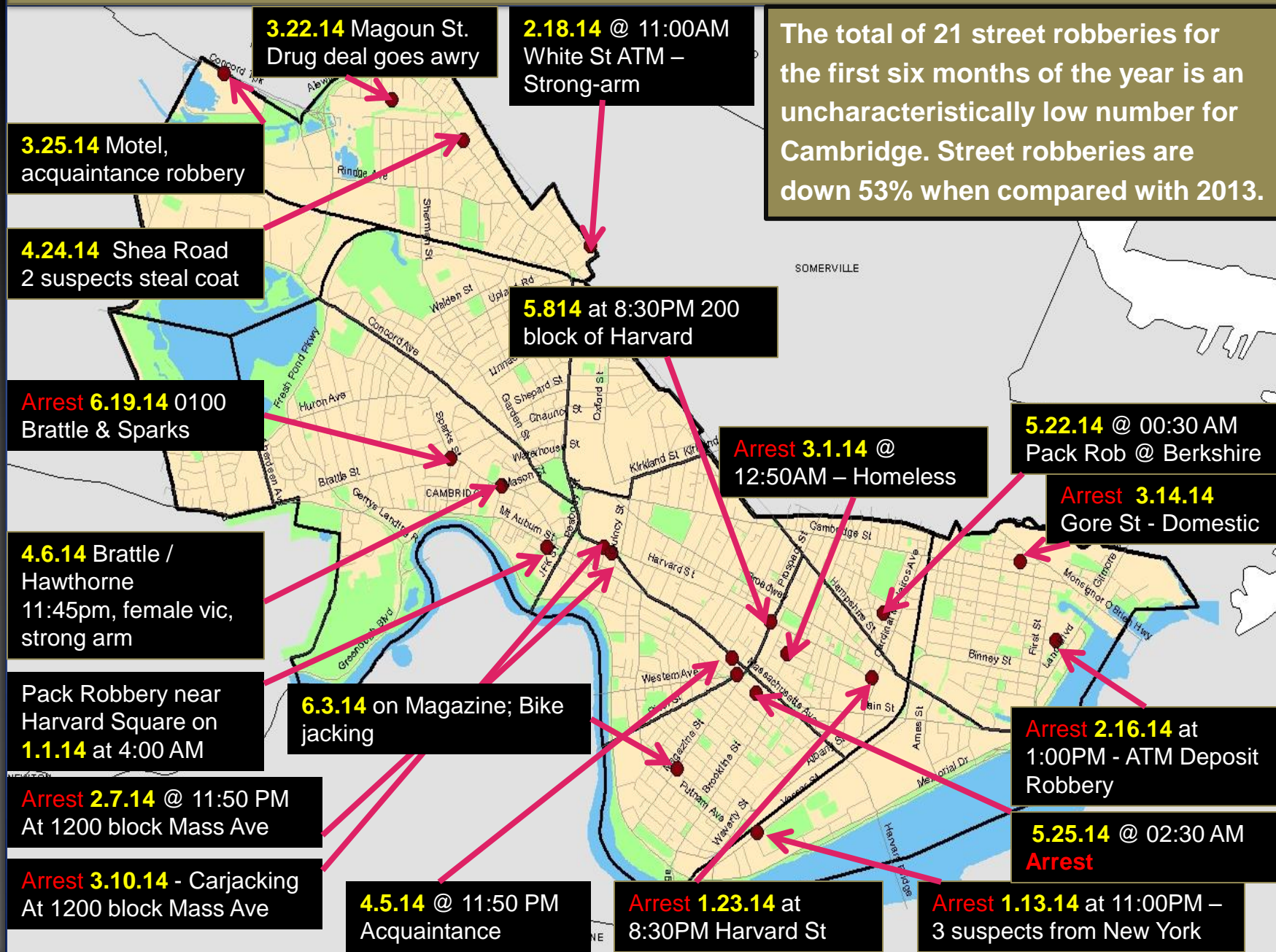




# Street Robberies: 1.1.14 to 6.30.14

Cambridge Police BridgeStat

June  
2014





## AGGRAVATED ASSAULT

*No Patterns*

- When compared to the first six months of 2013, aggravated assaults recorded a decline of 4% with four fewer incidents counted for the first two quarters of 2014. When measuring this violent index crime against the five-year average for the time period between January and the end of June, there has been a decrease of 16%, with 18 fewer crimes below the projected average of 111 aggravated assaults.
- Aggravated Assaults rose from 19 incidents in May to 21 reported crimes in the month of June. The majority of this increase can be attributed to an increase in domestic assaults across the city. Road rage dust ups over parking spaces and accidents are also on the rise.
- Classification Breakdown for 2014**

Type	Number	% of Total
Domestic	41	44%
Unprovoked	12	13%
Road Rage	9	10%
Workplace	9	10%
Assault on PO	8	9%
Shop Owner /Patron	8	9%

### Percent Change

Last 4 Weeks

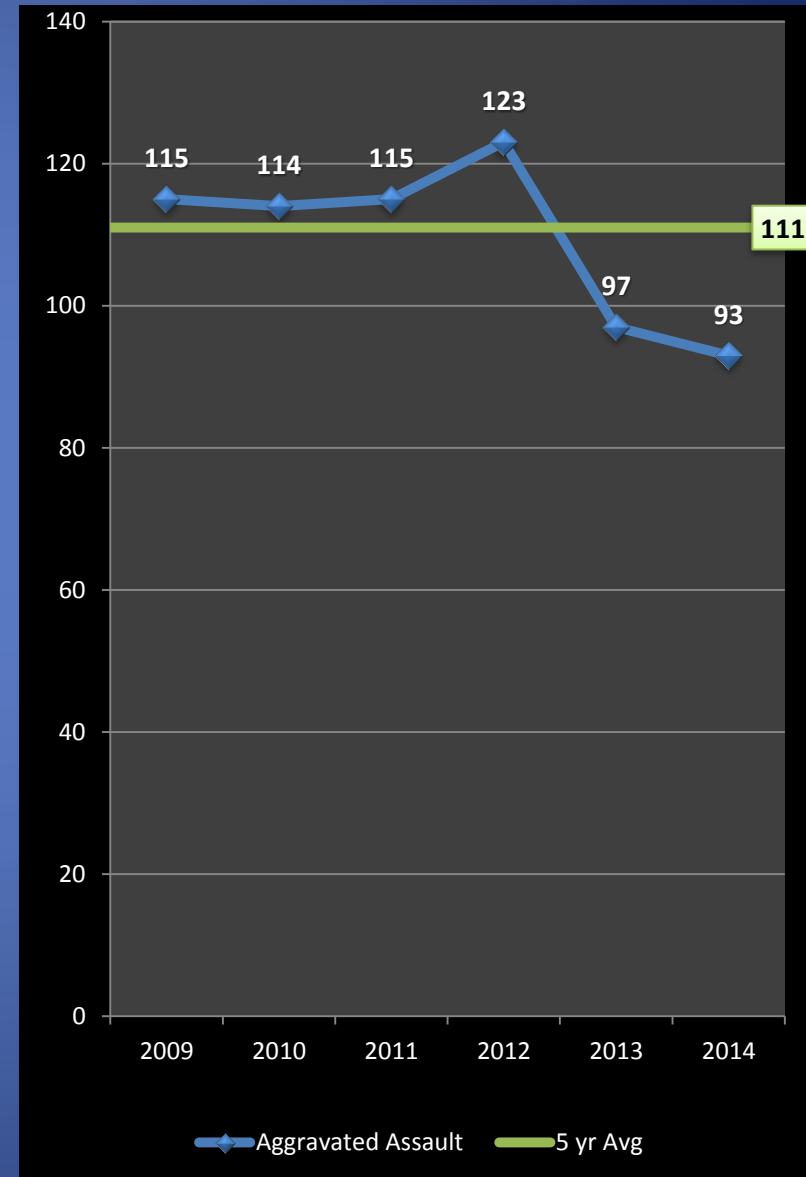
**+11%**

Previous Year

**-4%**

5 Year Average

**-16%**

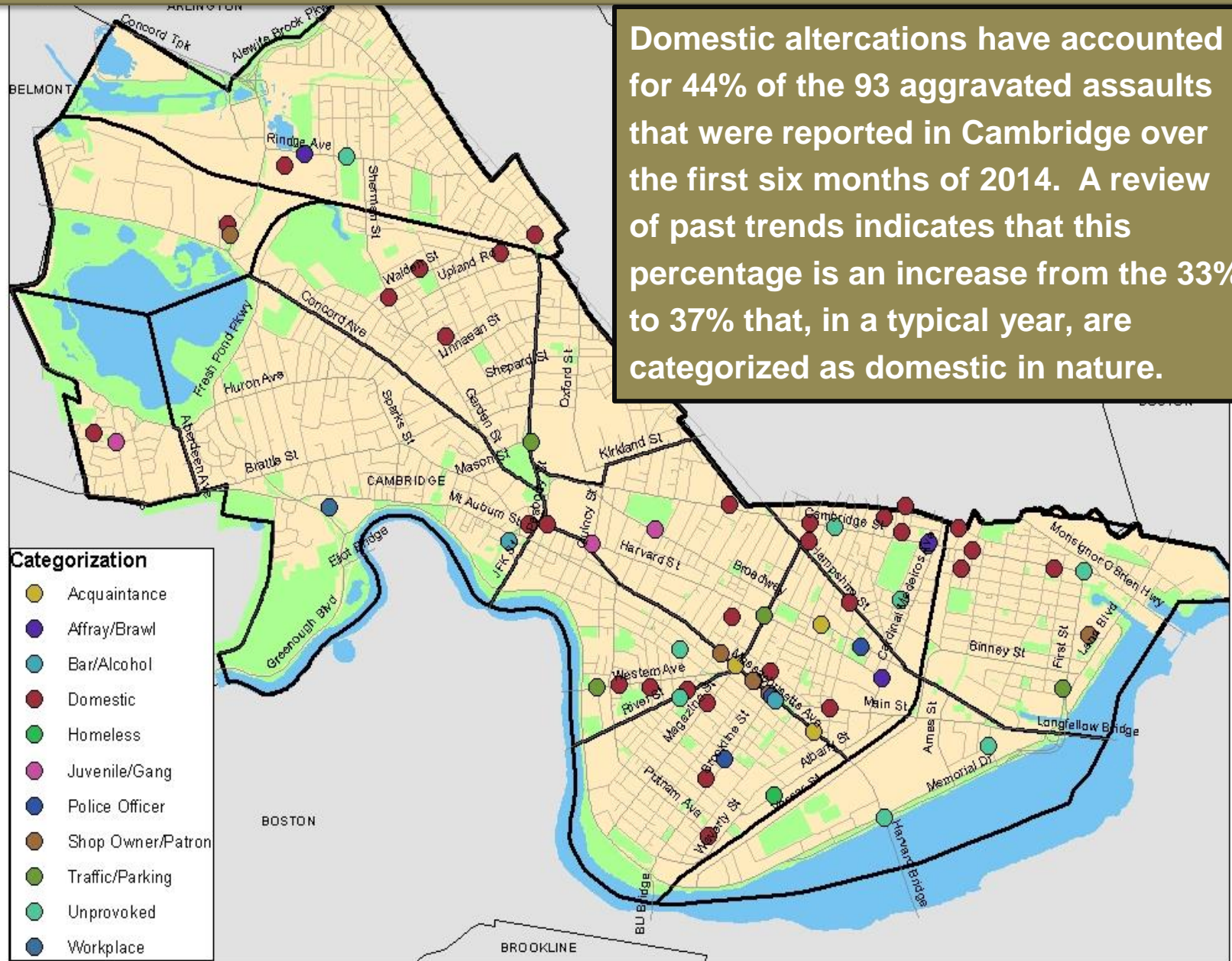






# Aggravated Assaults: 1.1.14 to 6.2.14

Domestic altercations have accounted for 44% of the 93 aggravated assaults that were reported in Cambridge over the first six months of 2014. A review of past trends indicates that this percentage is an increase from the 33% to 37% that, in a typical year, are categorized as domestic in nature.





# Burglary

*No Patterns*

- The property index crime of burglary, the combination of residential and commercial breaks, is down a startling 40% when compared to the five-year average, with 81 fewer incidents than the projected total of 204 crimes, and down 26% when compared with last year's total for the first six months of the year, with 43 fewer burglaries reported.
- Commercial burglary has increased by five incidents when compared with the first two quarters of 2013. When measured against the five-year average, an 18% reduction is revealed with six fewer crimes than the 34 projected for the first six months of the year. There has yet to be a commercial burglary pattern identified in 2014.
- Analysis of housebreak activity in Cambridge for the first six months of 2014 indicates an astounding 34% reduction (48 fewer breaks) than in 2013 and a 44% decline below the five-year projected average of 170 housebeaks.

## Percent Change

Last 4 Weeks

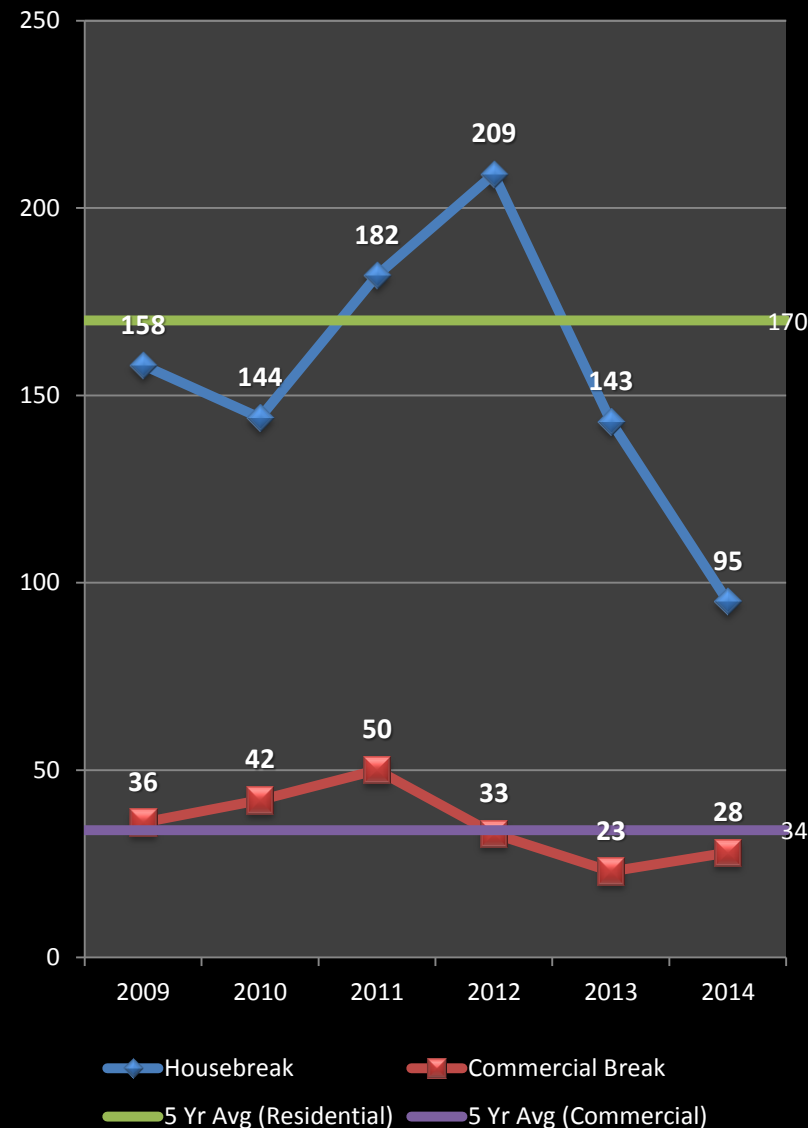
Previous Year

5 Year Average

**+83%**

**-26%**

**-40%**

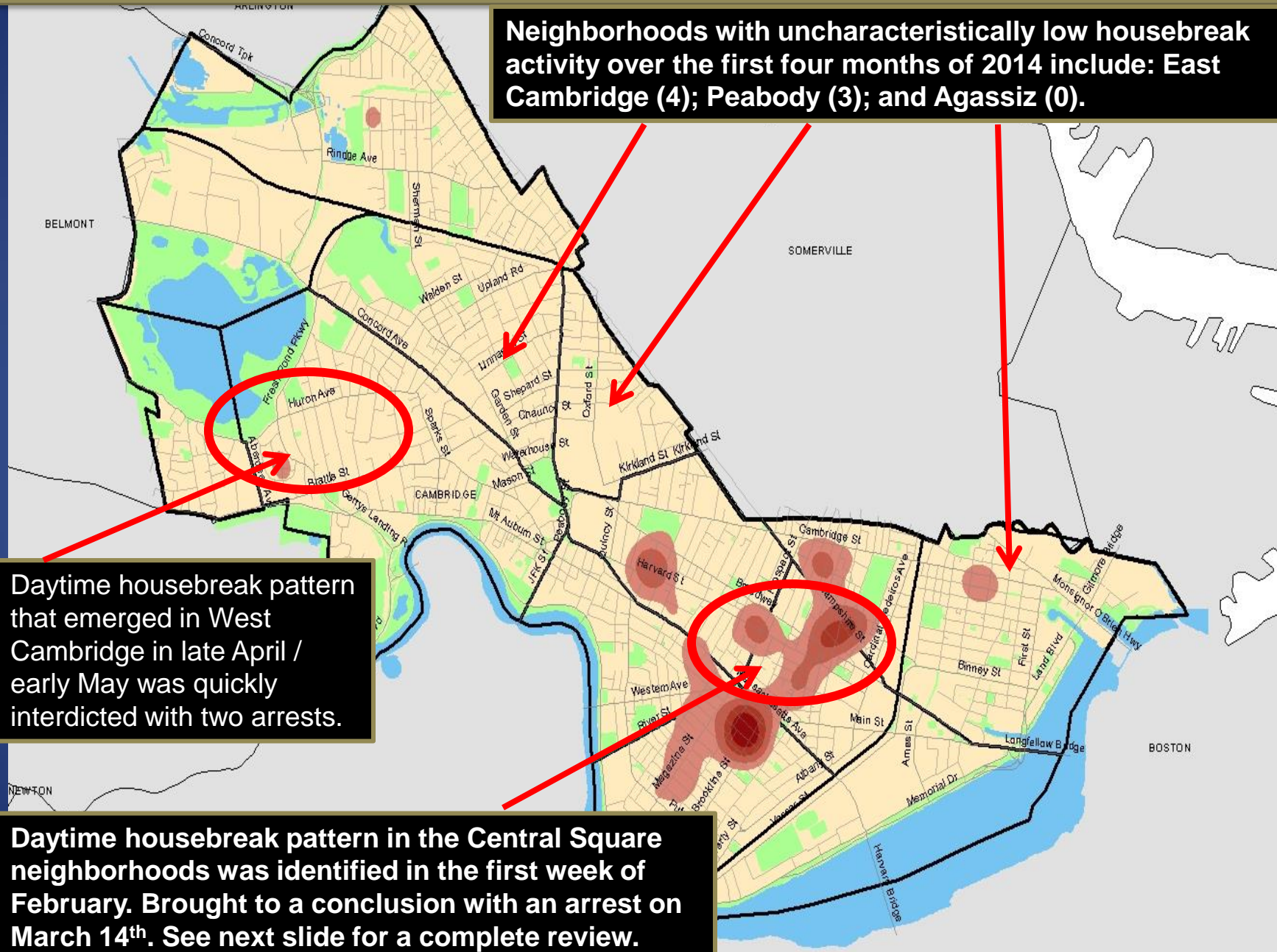






# Housebreaks: 1.1.14 to 6.30.14

Neighborhoods with uncharacteristically low housebreak activity over the first four months of 2014 include: East Cambridge (4); Peabody (3); and Agassiz (0).



Daytime housebreak pattern that emerged in West Cambridge in late April / early May was quickly interdicted with two arrests.

Daytime housebreak pattern in the Central Square neighborhoods was identified in the first week of February. Brought to a conclusion with an arrest on March 14<sup>th</sup>. See next slide for a complete review.



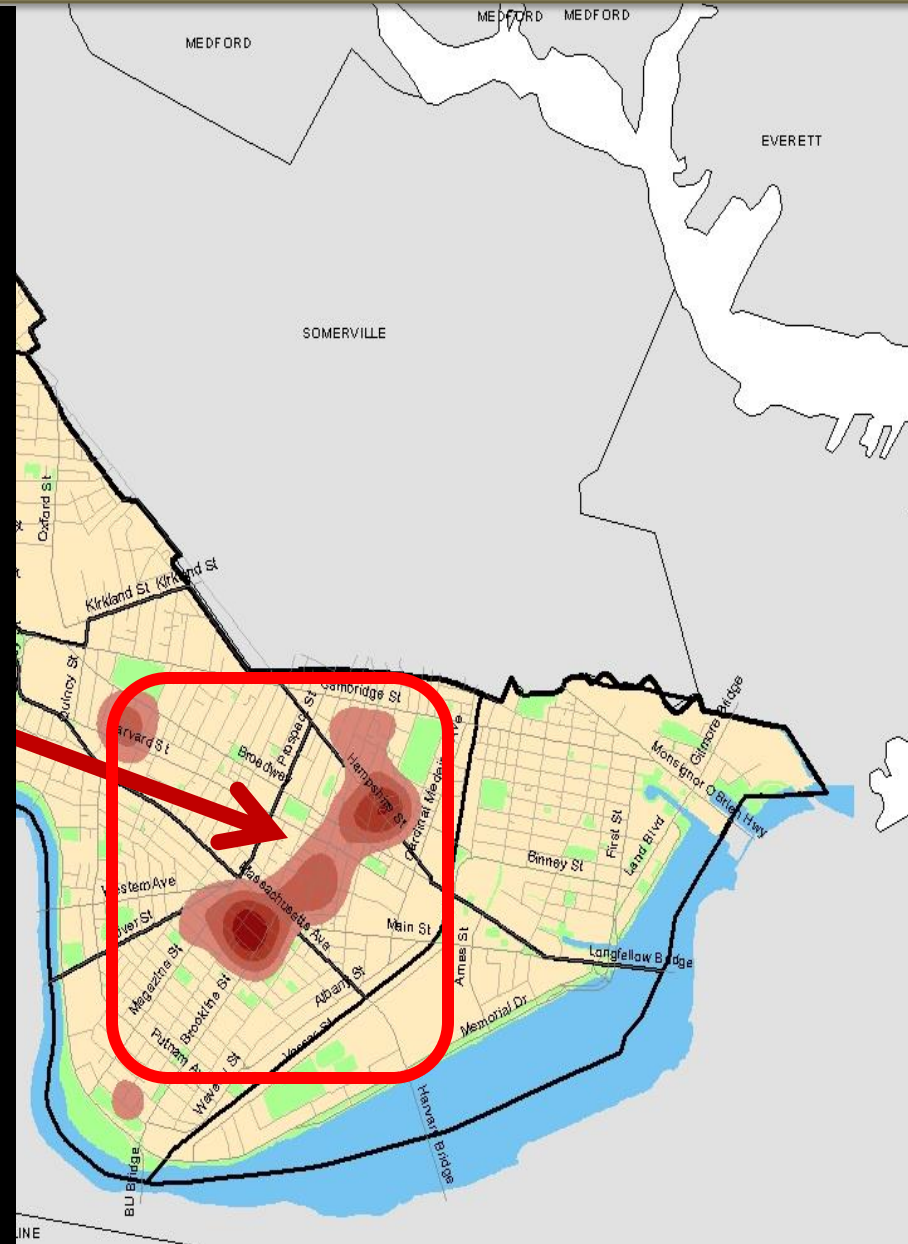
# Major Housebreak Pattern of 2014: Central Square Neighborhoods

This daytime housebreak pattern in the Central Square neighborhoods was identified in the first week of February. Breaks were concentrated in the Windsor / Willow Street area and along upper Magazine and Brookline Streets in Cambridgeport.

Incidents were between the hours of noon and 6:00PM with front doors being forced and laptops and jewelry identified as the targets. Very sporadic activity over the final three weeks of February, though the pattern was still considered active at the time. Extra patrols were allocated to this area.

On 3.12.14, an alert for a pattern of housebreaks in this area was sent to the local media. That same day, it was ascertained that Jonathan Thomson of Cambridge, who had been recently arrested in Boston for housebreaks, was a suspect in this series.

On 3.13.14, Thomson was arrested on warrants at his residence. Thomson has been linked to a number of these breaks through physical evidence. There have been no additional breaks.







# LARCENY

## *Sporadic Patterns*

- Overall, **larceny through the first half of 2014 has dropped by 13%** when compared with the same time frame in 2013 and is down 19% when measured against the five-year weighted average.
- **Larcenies from motor vehicles have dropped off again over the past month, now registering 20% below the first half of last year.** The large difference at the beginning of 2014 could be blamed on the rough winter weather this year, but there is currently little explanation for the continued reduction during the warm months.
- **Larcenies from persons year-to-date in 2014 have registered 42% below the level reported during this time frame in 2013**, with 73 fewer incidents than last year and 71 fewer than the five-year average. Both Harvard Sq and Central Sq remain quiet for this crime type, with only a few sporadic incidents reported over the past month.
- **There have been 173 larcenies from buildings reported citywide through June of 2014.** This is 8% below the number reported in 2013 and 9% below the five-year average. There are currently no patterns of this activity.
- **Larcenies from residences citywide have risen 14%** compared to last year, due largely to an increase in package thefts from residences in Mid-Cambridge, Peabody, and North Cambridge in May. These incidents dropped nearly 50% in June.
- Thus far in 2014, there have been **123 bike thefts reported citywide**, which is 2% above the total reported during this time frame in 2013 and 2% below the five-year average. Bike thefts rose 135% from 26 in May to 61 in June.

### Percent Change

Last 4 Weeks

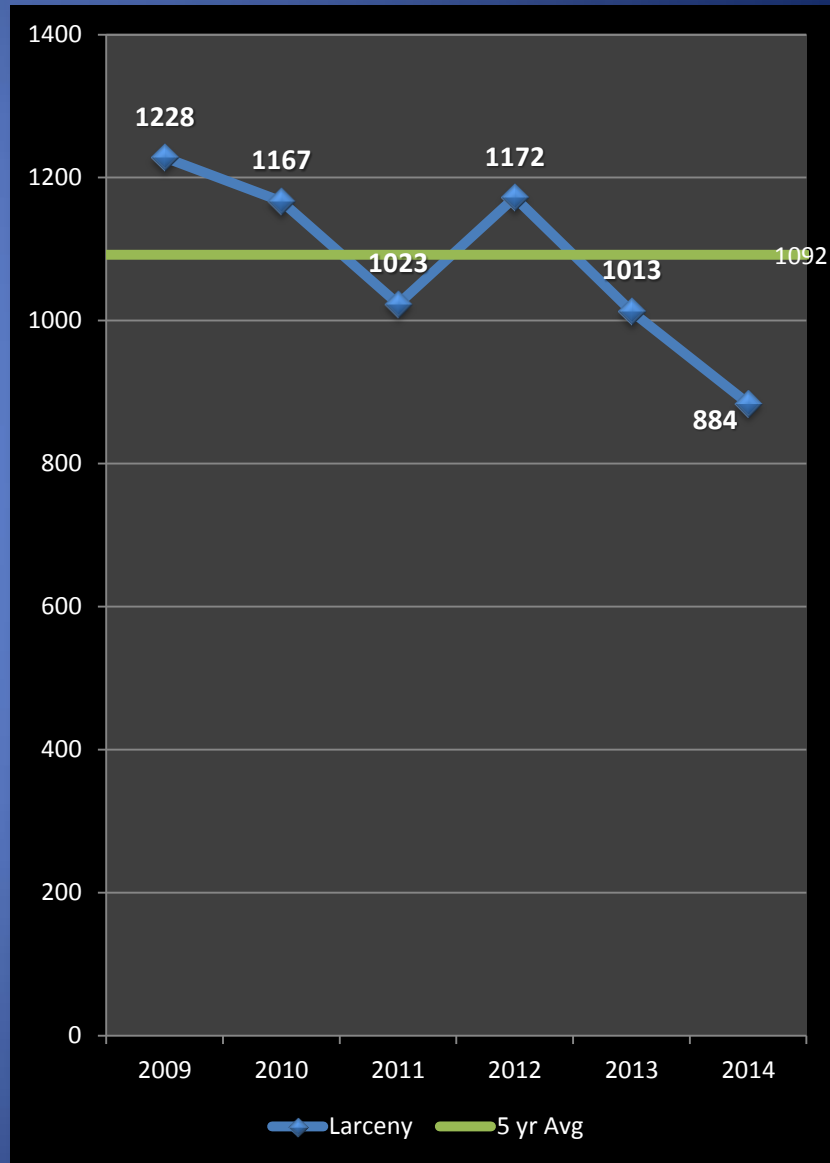
**-4%**

Previous Year

**-13%**

5 Year Average

**-19%**





# LARCENY: *From MVs*

## *Sporadic Pattern*

- Larcenies from MVs **are down 20% year-to-date through the first six months of 2014** when compared with the same time frame in 2013. There have been 49 fewer thefts reported so far this year. This crime has also **dipped 33%** when measured against the five-year average, with **100 fewer incidents** than the projected total of 301 thefts.
- When comparing the last four weeks to the previous four weeks, this index crime decreased by one incident (3%).
- The border between Area 4 and Inman / Harrington had been the major hot spot for larceny from motor vehicles during February & March. The majority of these incidents were on weekend nights with unlocked vehicles as the target. Over the past 2 months, this area has been quiet.
- Over the weekend of May 20<sup>th</sup>, there were nine LMVs in West Cambridge and over the border into Peabody. The most likely time frame was from 1am - 3 am. Unknown suspects were targeting unlocked doors and taking change or backpacks. Extra patrols in the area appear to have eradicated this series with few incidents reported over the past two weeks.
- Cambridgeport /Riverside was the major hot spot for LMVs in the City in 2013 and this trend continued over the first two months of 2014. There were 20 thefts from vehicles in the first six weeks of the year. This area had been quiet until mid-June when thefts from vehicles on weekend nights were increasing.

### Percent Change

Last 4 Weeks

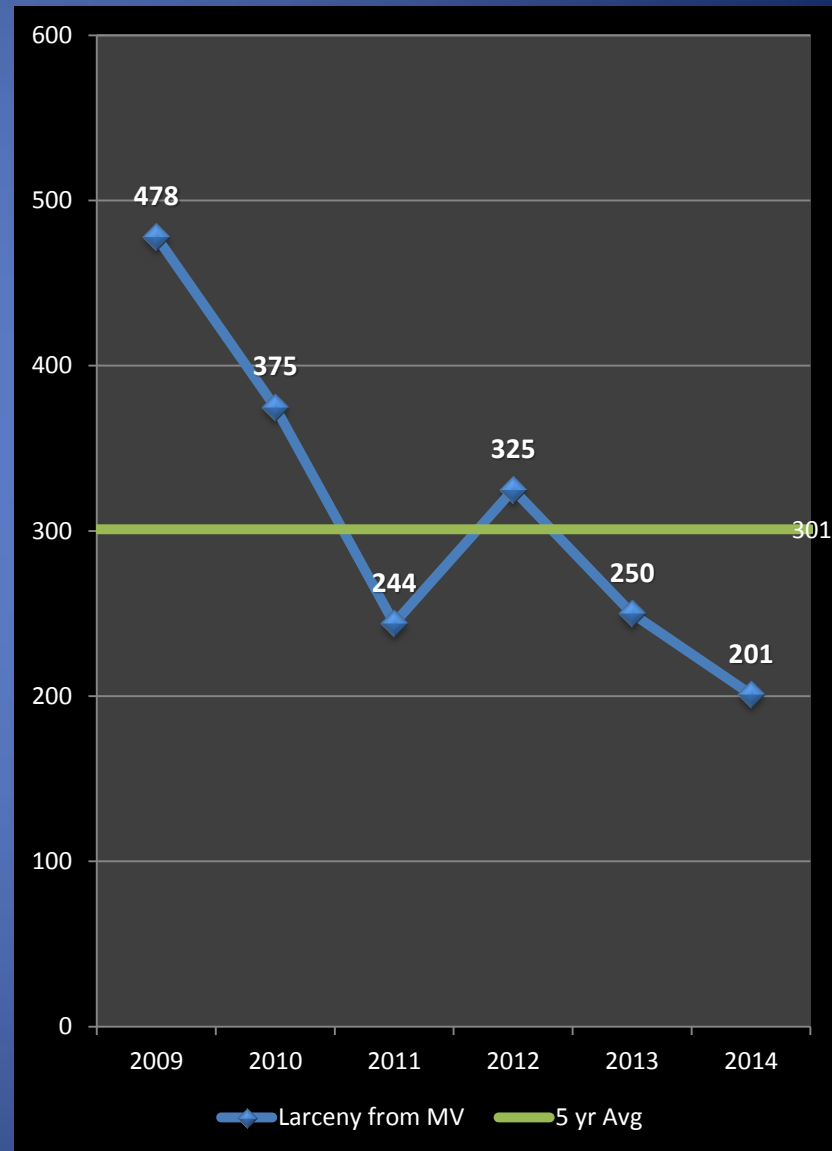
**-3%**

Previous Year

**-20%**

5 Year Average

**-33%**

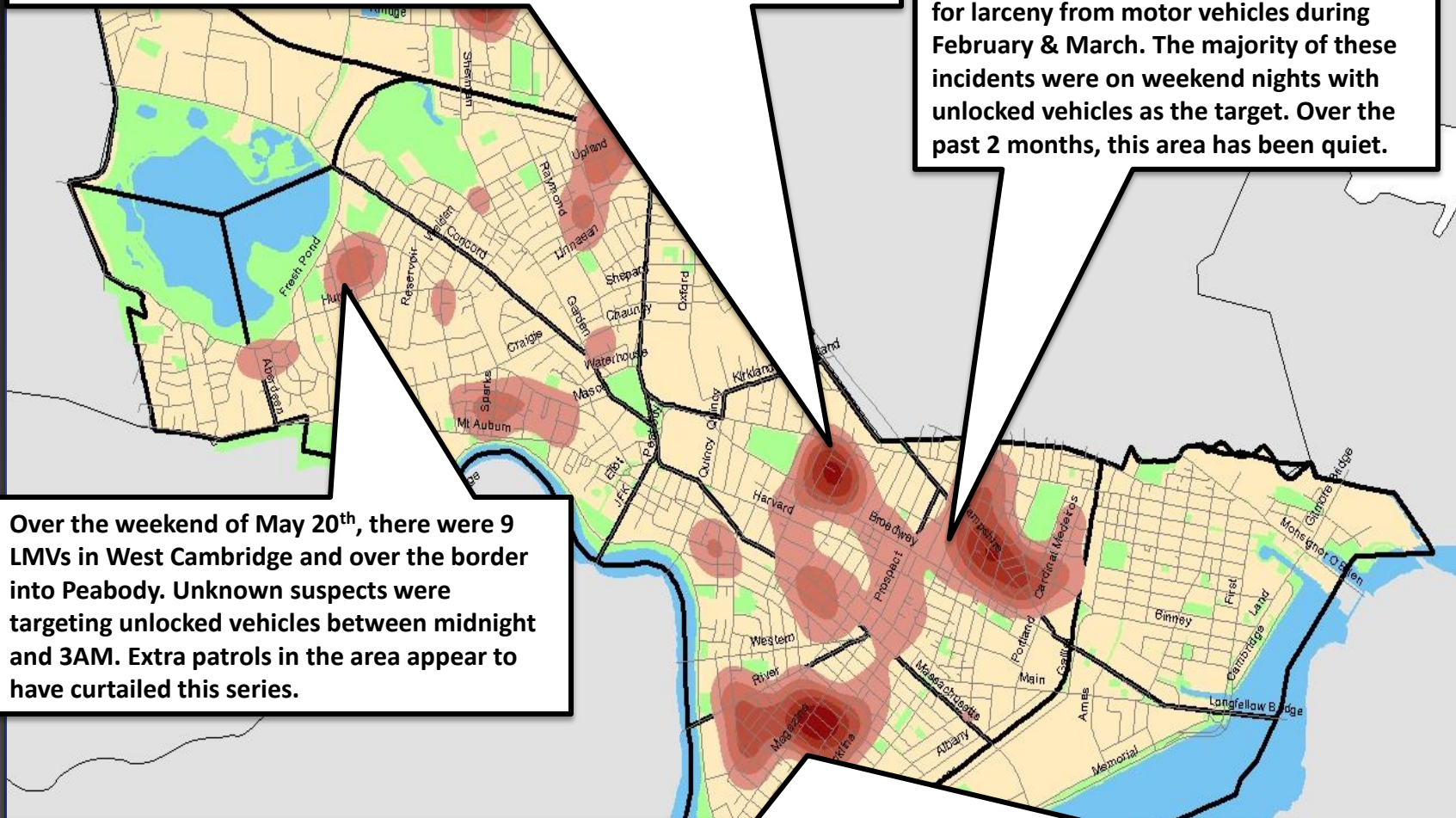




# Larceny from MVs: 1.1.14 to 6.30.14

There have been 24 LMV thefts in Mid-Cambridge so far in 2014 with 15 occurring in a three-week period from late March to the middle of April. A high percentage of the incidents were weekday overnight thefts from unlocked vehicles between Broadway and Cambridge Streets. Very little activity over the past 2 months.

The border between Area 4 and Inman / Harrington had been the major hot spot for larceny from motor vehicles during February & March. The majority of these incidents were on weekend nights with unlocked vehicles as the target. Over the past 2 months, this area has been quiet.



Over the weekend of May 20<sup>th</sup>, there were 9 LMVs in West Cambridge and over the border into Peabody. Unknown suspects were targeting unlocked vehicles between midnight and 3AM. Extra patrols in the area appear to have curtailed this series.

Cambridgeport /Riverside was the major hot spot for LMVs in the City in 2013 and this trend continued over the first two months of 2014. There were 20 thefts from vehicles in the first six weeks of the year. Area had been quiet until mid-June when thefts from vehicles on weekend nights were increasing.





# Larceny from Motor Vehicles

## *What can we do?*

### Police Response Strategy:

- Cambridge Police are focused on prevention of these crimes by increasing officer visibility in targeted areas.
- Citizens are encouraged to take the proper precautions to protect their vehicles and their belongings by doing everything possible to not make their vehicles easy targets.



### Citizen Response Strategy:

- Citizens are asked to take the following precautions to protect themselves, their vehicles, and their belongings from theft:
  - **Make sure all of your car doors are locked when you leave your vehicle.**
  - **Take extra care when out doing your shopping.**
  - **If you are approached by a suspicious person while you are in your vehicle, sound your horn to attract attention.**
  - **NEVER LEAVE VALUABLES EXPOSED IN YOUR CAR.**
    - If you must leave packages or valuables in your car, **place them in the trunk or under a blanket to conceal them**
  - Visit our website for more tips to keep your vehicles and belongings at **[www.CambridgePolice.org/SafetyTips](http://www.CambridgePolice.org/SafetyTips)**





# LARCENY: *from Person*

## *No Patterns*

- **Larcenies from the person have fallen a considerable 73 incidents (42%) through June** when compared with the same timeframe in 2013. The total of 99 incidents reported thus far in 2014 is also 71 incidents below the five-year average.
- Larcenies from the person citywide dropped by two incidents (11%) from the previous four-week period to the current. There are no patterns of this crime type anywhere in the city at the present time.
- Often, much of the larceny from person activity is reported at the many bars and restaurants in Harvard Square (known as "dipper" activity). In June, there were only two incidents of this nature reported in Harvard Sq, which is unusually low.
- Harvard and Central Squares have seen the largest reductions in larcenies from persons this year, with each reporting 15 fewer incidents thus far in 2014 than during the first half of 2013.
- Part of the explanation for the large reduction may be that a number of the more prolific thieves, particularly ones that that tend to target the Harvard Square area, are currently incarcerated.

### Percent Change

Last 4 Weeks

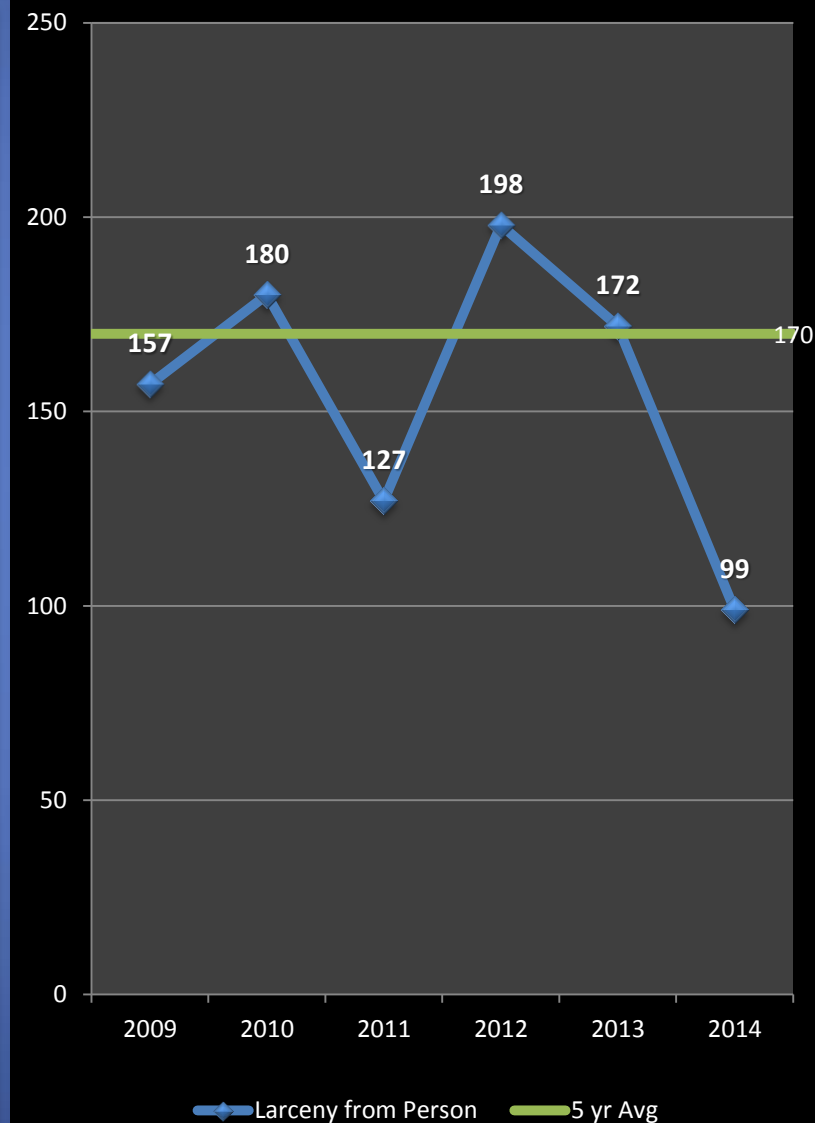
**-11%**

Previous Year

**-42%**

5 Year Average

**-42%**





# LARCENY: of Bicycle

## No Patterns

- There have been 123 bikes reported stolen through the first half of 2014. This total is 2% above the number reported during this time frame in 2013 and 2% below the five-year average. All but 10 of the 123 this year were reported during the second quarter (April 1 – June 30).
- With the warmer weather, bike thefts have increased noticeably in recent weeks. From the previous four weeks to the last four weeks, these thefts rose 135% from 26 to 61 incidents. Mid-Cambridge had the most bike thefts in June with 15, followed by Cambridgeport with 9.
- 60% of the thefts reported this year have involved bikes that were locked but left out in the open (locked to public bike racks, for example). Although the majority are locked to bike racks on the street/sidewalk, it is not uncommon for bikes to be stolen from porches or yards in more residential areas like Mid-Cambridge.
- **Breakdown by Neighborhood, year-to-date:**

Neighborhood	Total	% Citywide
Mid-Cambridge	26	21%
Riverside	14	11%
Inman	14	11%
Area 4	12	10%

### Percent Change

Last 4 Weeks

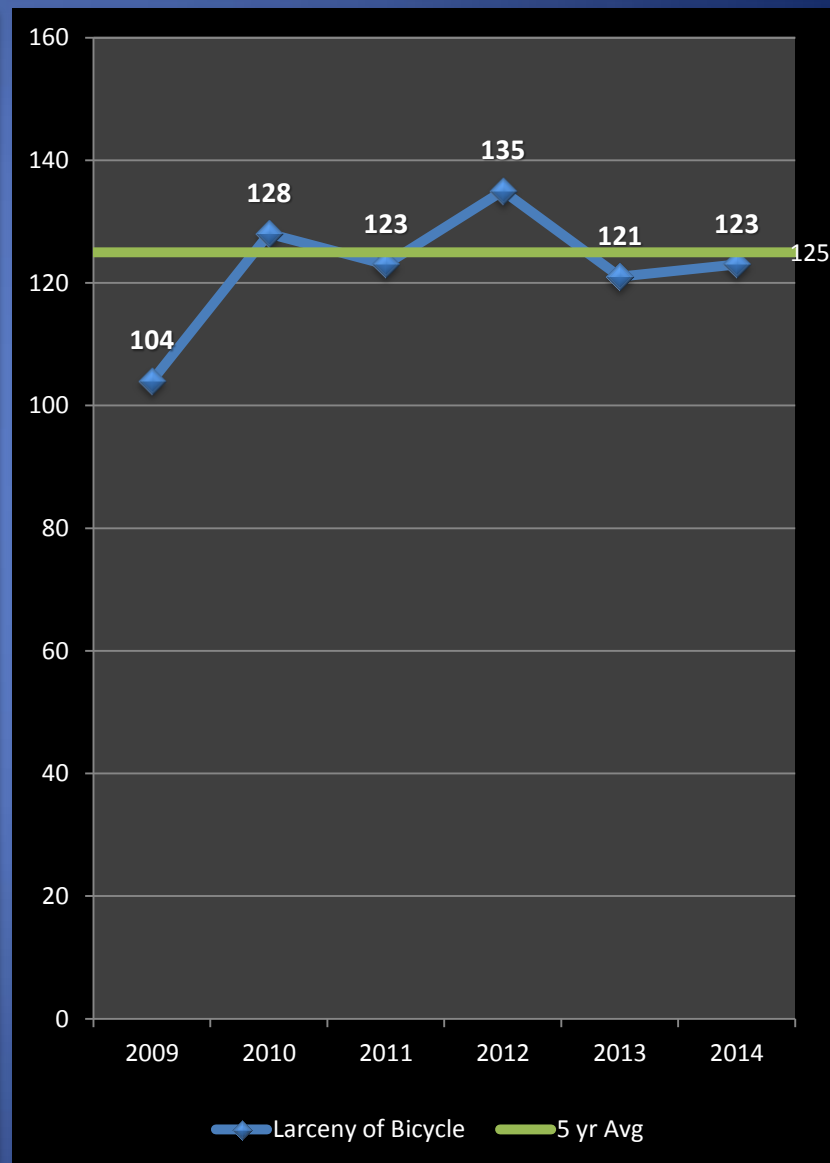
**+135%**

Previous Year

**+2%**

5 Year Average

**-2%**



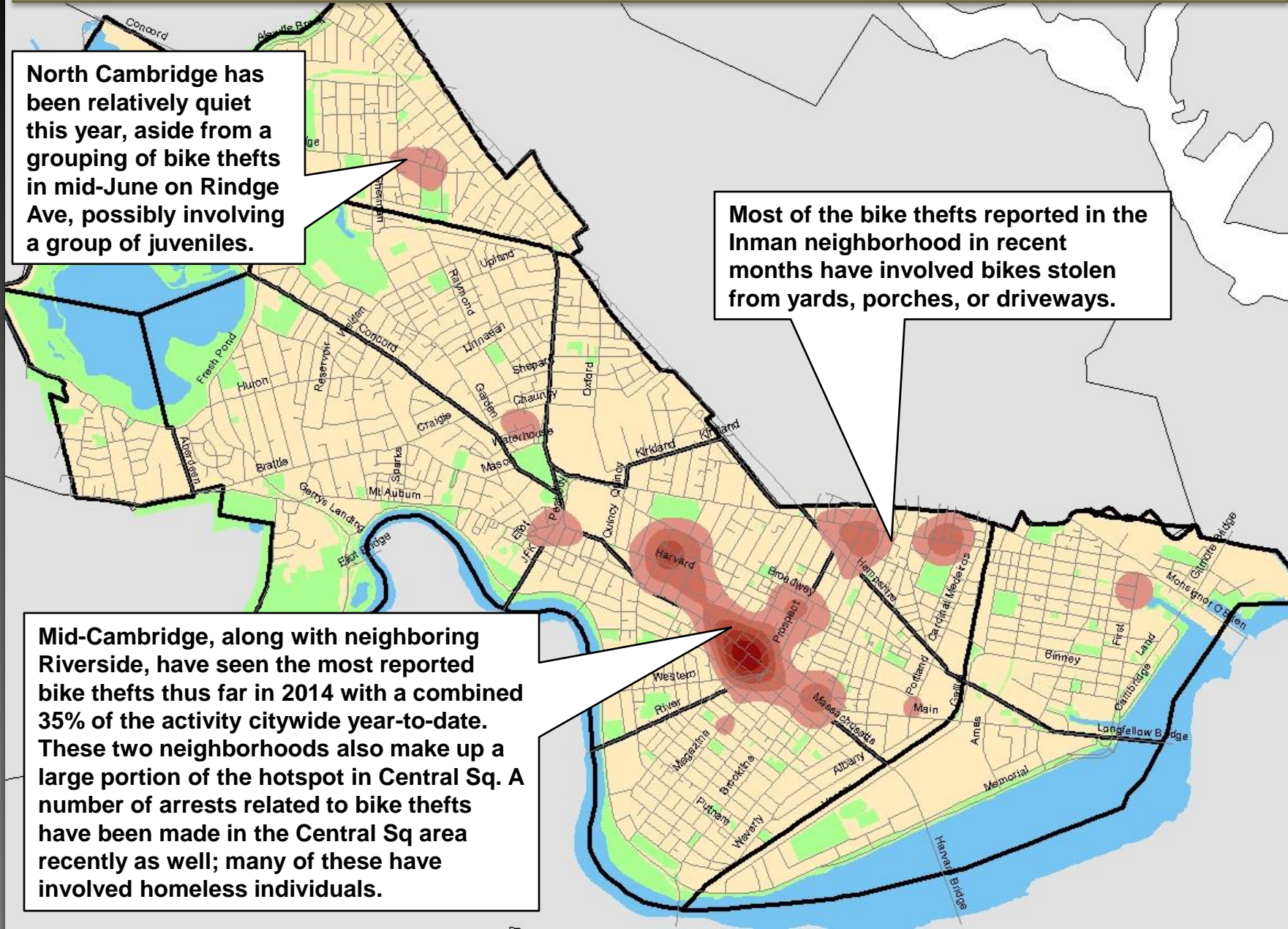


# Larceny of Bicycles: 4.1.14 to 6.30.14

North Cambridge has been relatively quiet this year, aside from a grouping of bike thefts in mid-June on Rindge Ave, possibly involving a group of juveniles.

Most of the bike thefts reported in the Inman neighborhood in recent months have involved bikes stolen from yards, porches, or driveways.

Mid-Cambridge, along with neighboring Riverside, have seen the most reported bike thefts thus far in 2014 with a combined 35% of the activity citywide year-to-date. These two neighborhoods also make up a large portion of the hotspot in Central Sq. A number of arrests related to bike thefts have been made in the Central Sq area recently as well; many of these have involved homeless individuals.







# Larceny of Bicycles:

## *What Can We Do?*

### Police Response Strategy:

- Bicyclists stopped for infractions will be reminded to use lights when biking at night, wear helmets under the age of 16, and other safety tips to promote safer biking in the city.



### Citizen Response Strategy:

- Bicyclist are encouraged to record their bike's serial number as well as take a picture of their bike to provide to police in the event that it is lost or stolen.
- For information on bicycle safety, visit: [www.CambridgePolice.org/CommunityResources](http://www.CambridgePolice.org/CommunityResources).
  - Click on the "Bicycle Safety and Registration" link.
- Stores should be vigilant in recording serial numbers and customer information on sales.
- Universities should encourage students to register their bikes and distribute information on the correct locking procedures.





# AUTO THEFT

*No Patterns*

- The projected five-year weighted average for auto thefts after the first half of the year is 62; thus far, we are 6 incidents below the average. However, in 2014, with 56 thefts year-to-date, we are seeing an increase over 2013 (+27%).
- There were 15 auto thefts reported in the past four weeks, which resulted in a 25% increase over May. This could be due in part to the weather heating up, as half of those thefts were of scooters and motorcycles. However, we are not seeing any definite patterns involving these types of vehicles.
- Since the beginning of the year, auto thefts have been reported pretty evenly throughout the city. The top three neighborhoods reporting thefts are: Area 4 (10), Cambridgeport (7), and Inman (7). There are no patterns anywhere in the City at the present time.
- Year-to-date, 23 (or 41%) of the stolen motor vehicles have been recovered.

## Percent Change

Last 4 Weeks

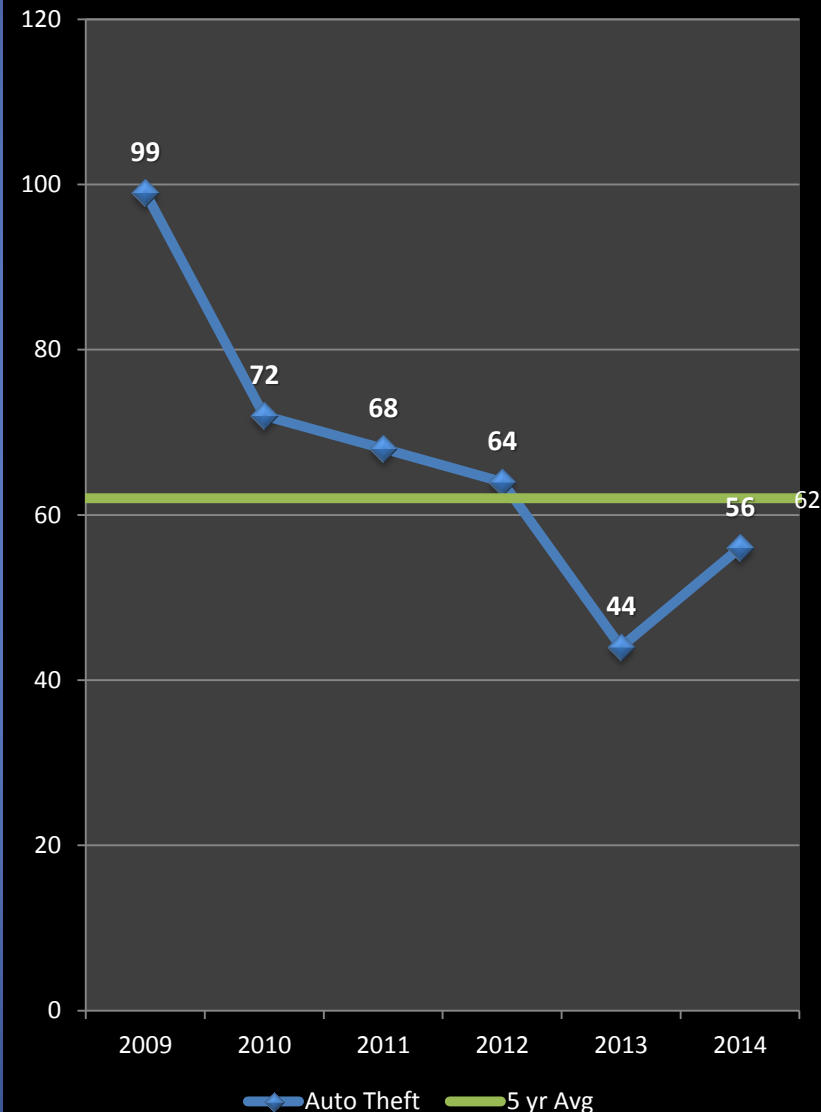
**+25%**

Previous Year

**+27%**

5 Year Average

**-10%**





# Help Prevent Crime

*And keep yourself informed!*

## To receive information from the CPD:

- Sign up with for the **Cambridge Alert Network**, to receive alerts about emerging crime patterns, neighborhood meetings, and crime prevention tips, by visiting [www.CambridgeMa.gov/AlertNetwork](http://www.CambridgeMa.gov/AlertNetwork).
- “Like” the Cambridge Police Department on Facebook at [www.facebook.com/CambridgePolice](http://www.facebook.com/CambridgePolice)
- Follow [@CambridgePolice](https://twitter.com/CambridgePolice) on Twitter.
- Visit our website at [www.CambridgePolice.org](http://www.CambridgePolice.org) for valuable information and reports including the Daily Log and BridgeStat, which is published on the first Friday of every month.
- Download our new “MyPD” smartphone app at [www.CambridgePolice.org/MyPD](http://www.CambridgePolice.org/MyPD).

## To Share Information with the CPD:

- Call our Non-Emergency Telephone Number at **617-349-3300**.
  - Every call for service generates a police response, so help drive our resources by reporting things that seem suspicious or out of the ordinary.
- Send an Anonymous TEXT-A-TIP:
  - Send an ANONYMOUS text message to **Tip411 (847411)**. Begin your message with Tip650 and then type your message. You will receive a response from the Cambridge Police with the option to continue communicating. Please remember that this is not a replacement for 9-1-1. **If you witness an emergency situation, please call 9-1-1 immediately.**
- Send an Anonymous Crime Tip E-Mail at [www.CambridgePolice.org/Tips](http://www.CambridgePolice.org/Tips)



# Questions?

- The complete 2013 Cambridge Police Annual Crime Report is available on our website at [www.CambridgePolice.org](http://www.CambridgePolice.org).
- We welcome all questions, comments, and suggestions.
- Please direct your feedback to: [BridgeStat@CambridgePolice.org](mailto:BridgeStat@CambridgePolice.org).
- To review previous editions of BridgeStat, visit our website at [www.CambridgePolice.org/BridgeStat](http://www.CambridgePolice.org/BridgeStat).