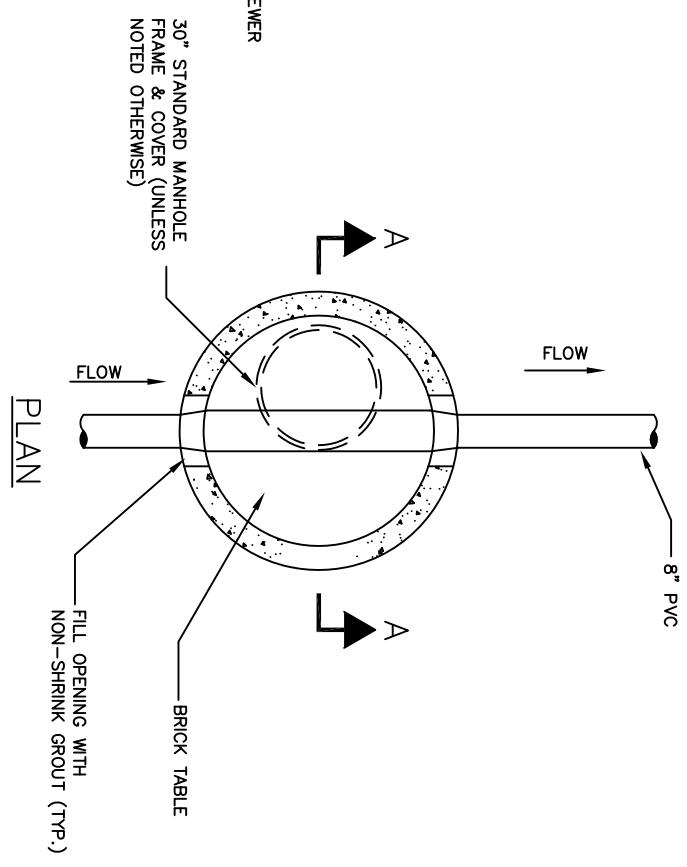


- NOTES:
1. SEWER OR DRAIN MANHOLE DIAMETER SHALL BE 4', 5', 6', OR 8' AS SHOWN ON PLAN VIEWS.
  2. DESIGN PRECAST SECTIONS WITH FRAME AND COVER FOR AASHTO H20 LOADING.

SECTION A-A



PLAN



TYPE 6 - MANHOLE CONSTRUCTED OVER  
EXISTING UTILITY - WITH BASE

CITY OF CAMBRIDGE STANDARD SPECIFICATIONS AND DETAILS

SCALE: N.T.S.      DATE OF ISSUE: 02/05      SPEC. SECTION REF#: 02252      2252.7