

KINGSLEY PARK



PUBLIC MEETING #3 SITE IMPROVEMENTS

June 21, 2012

Agenda

- Introductions
- Overview – Previous Presentations
- Play areas
- Historic Interpretation
- Pathway Alignment
- Public Input
- Next Steps

Overview – Presentation #1

- Master Plan Goals
- Cultural and Geological History
- Vegetation Inventory
- Erosion and Compaction
- Inventory of Site Amenities
- Shared Use Overview

Overview - Presentation #2

- ADA Compliance for Pathways
- Stormwater Management
- Drainage Improvements

Existing Site Features

FRESH POND RESERVOIR

SCENIC OVERLOOKS

INFORMAL TRAILS

BASE LOOP PATH

HEMLOCK GROVE

CREST LOOP PATH

PERIMETER ROAD

WATER TREATMENT FACILITY

WETLAND

TREATMENT WETLAND

PARKING LOT



Goals for Healthy Parks and Playgrounds

- Integrate play environments
- Balance safety with adventure
- Support curiosity and creativity
- Stimulate physical activity
- Provide activities for all ages & abilities
- Season- and weather- independent

Existing Play Structure

- Accommodates 3 children
- Ages 1 to 3 (2 swings)
- Ages 3+ (1 swing)



Undirected Play



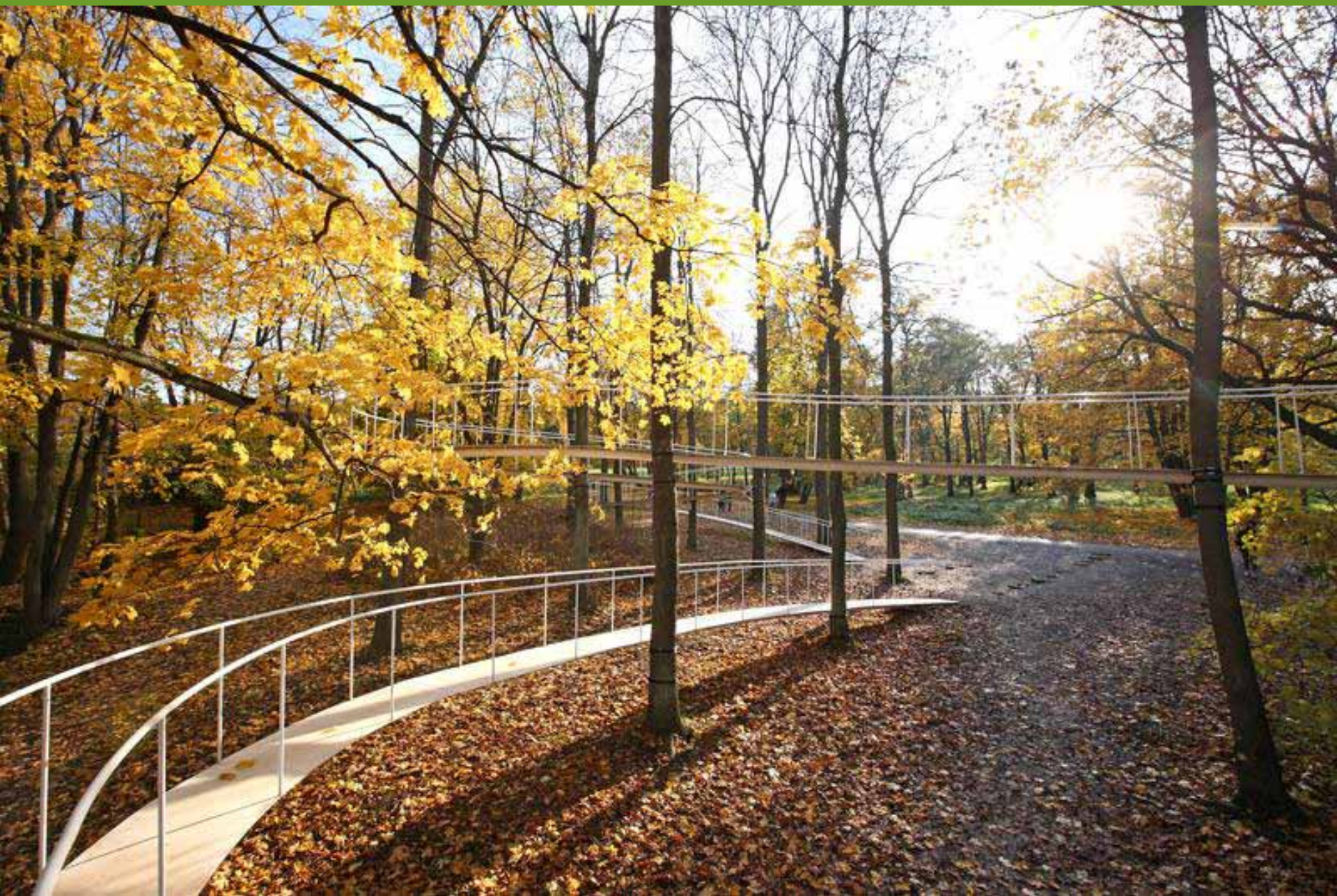
Undirected Play



Play at Kingsley Park

- Undirected and Controlled Play
- Discovery
- Creative Sculptural Elements
- Intergenerational (not just for kids)
- Capture Vistas









Picnic Grove at Fresh Pond,
Cambridge, Mass.



Historic Interpretation

- Met with Cambridge Historic Commission
- Access to Historic documents
- Archaeological Findings
- Inventory of existing features
 - Pathways
 - Overlooks

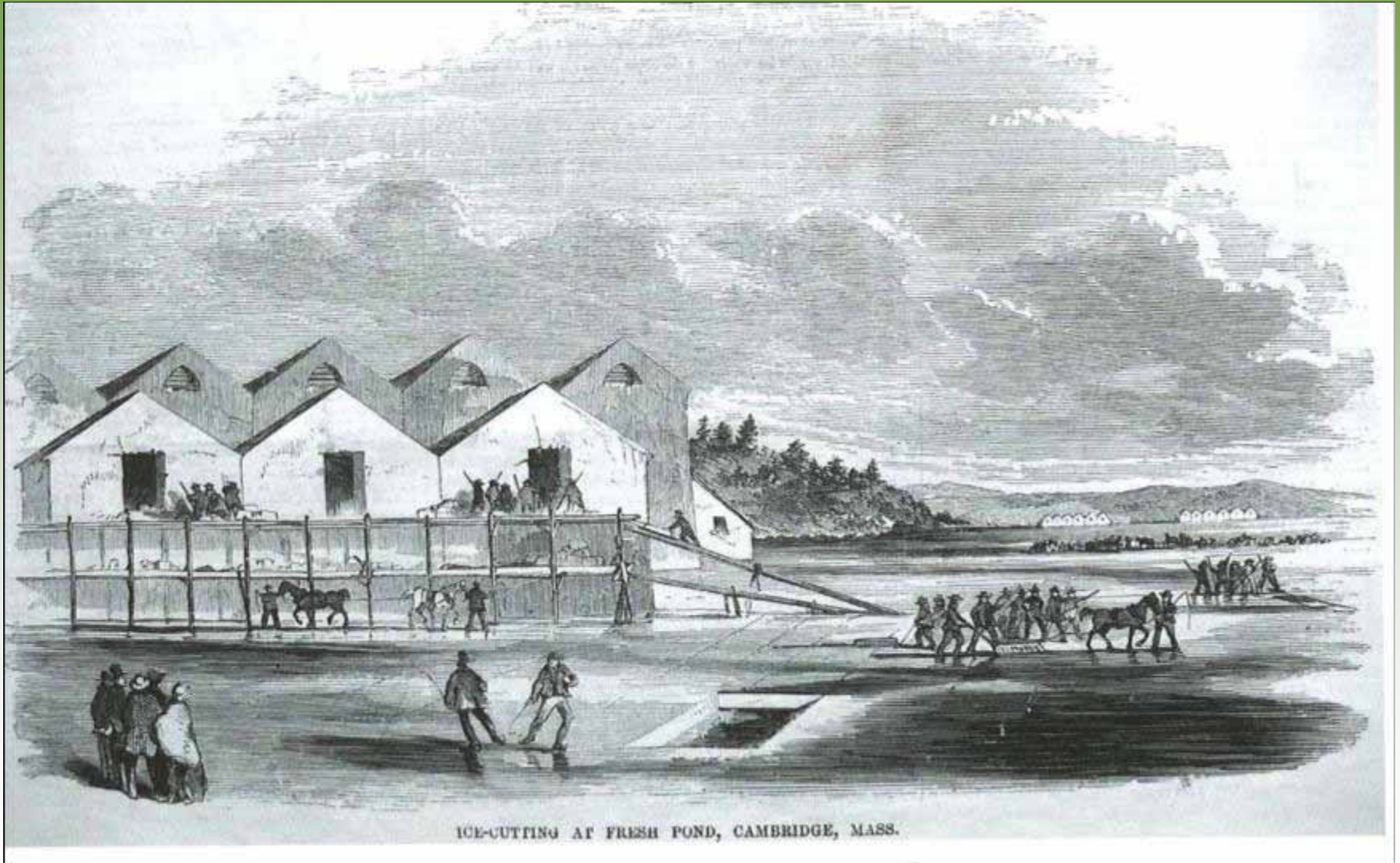
Historic Interpretation

- Layering of History on the Site
 - Geologic
 - Ecologic
 - Cultural (Native American use through current use)
- Digital tools (Smart phone apps)
- Kiosk

Kiosk - 4 Sided Panel



Industry: Ice Harvesting

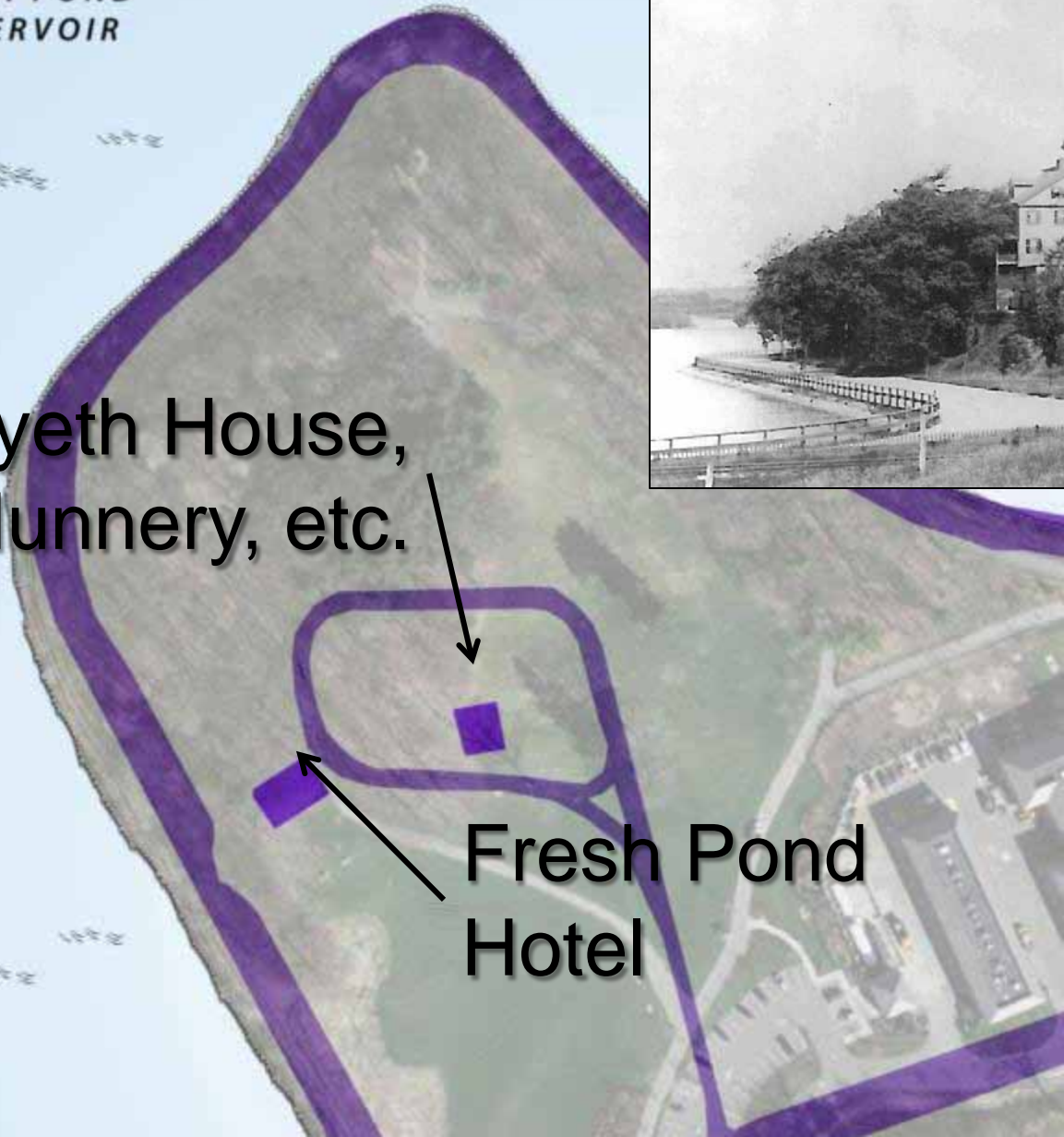


Fresh Pond Hotel ca.1796

FRESH POND
RESERVOIR

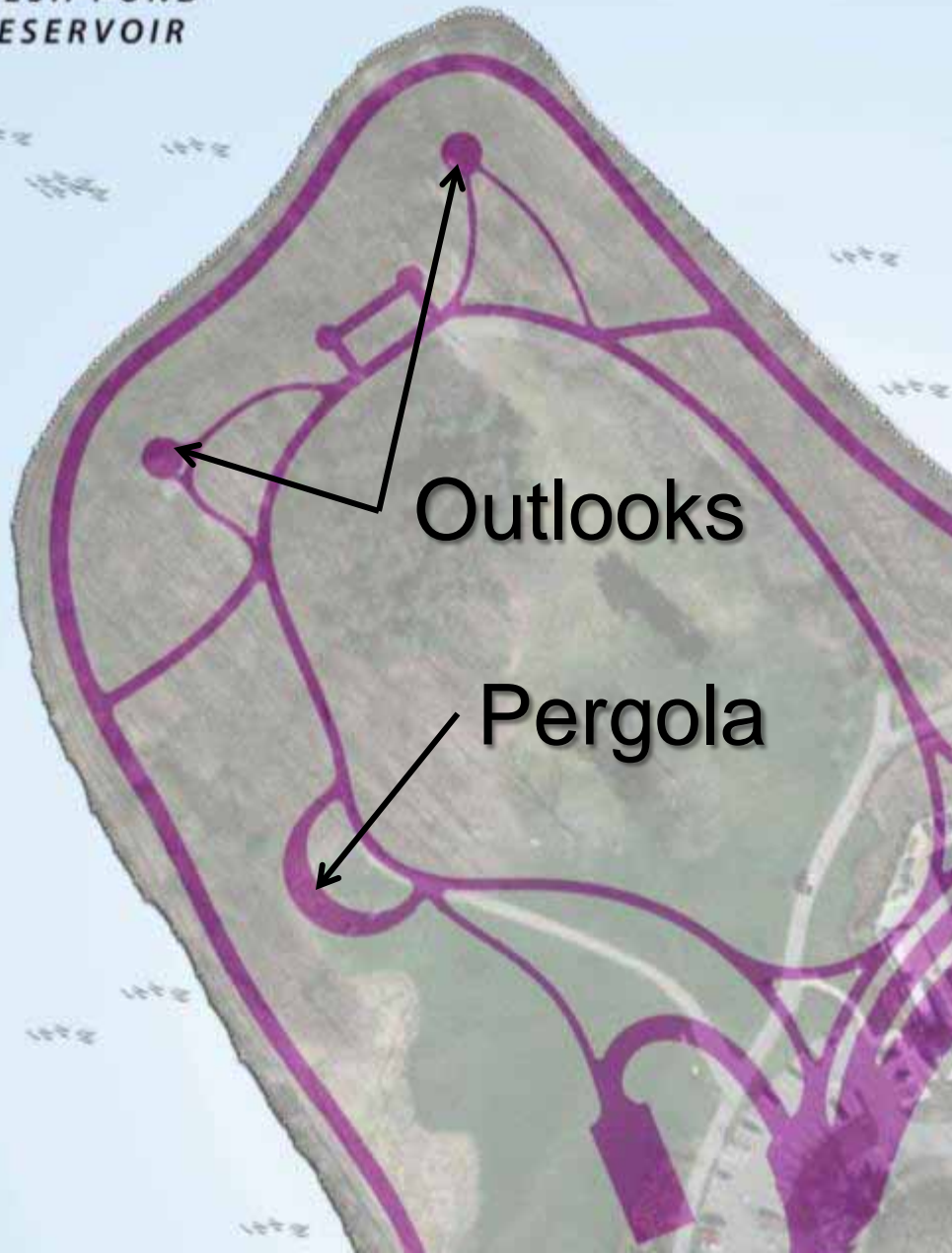
Wyeth House,
Nunnery, etc.

Fresh Pond
Hotel



Hemlock Hill (Point) to Kingsley Park

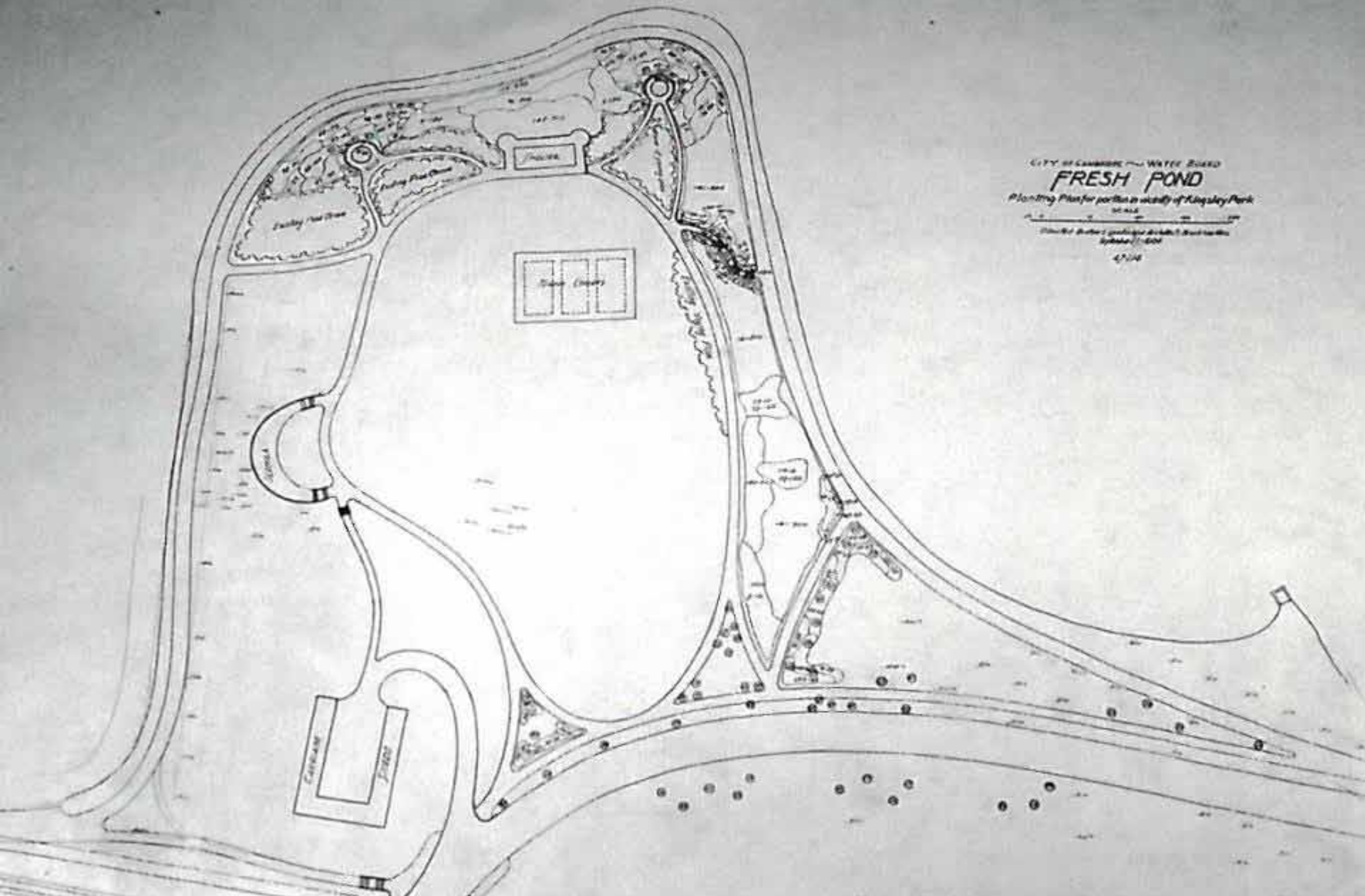
FRESH POND
RESERVOIR



Picnic Grove at Fresh Pond,
Cambridge, Mass.



1896 Olmsted Bros. Layout Plan





Circulation Hierarchy

Primary:

Perimeter Road

Secondary:

Crest and Base Loop Paths

Informal:

Connector Trails

FRESH POND
RESERVOIR



Accessibility

- Non-Compliant Slopes (>5%)
- Non-Compliant Materials



Proposed Standard Pathway Details

- Perimeter Road
 - 12' Width, Asphalt Paving
- Crest Loop and Base Loop Path
 - 8' width asphalt
 - 2' porous, stabilized shoulder (where possible)
 - Boardwalk

Crest Loop Path Option 1



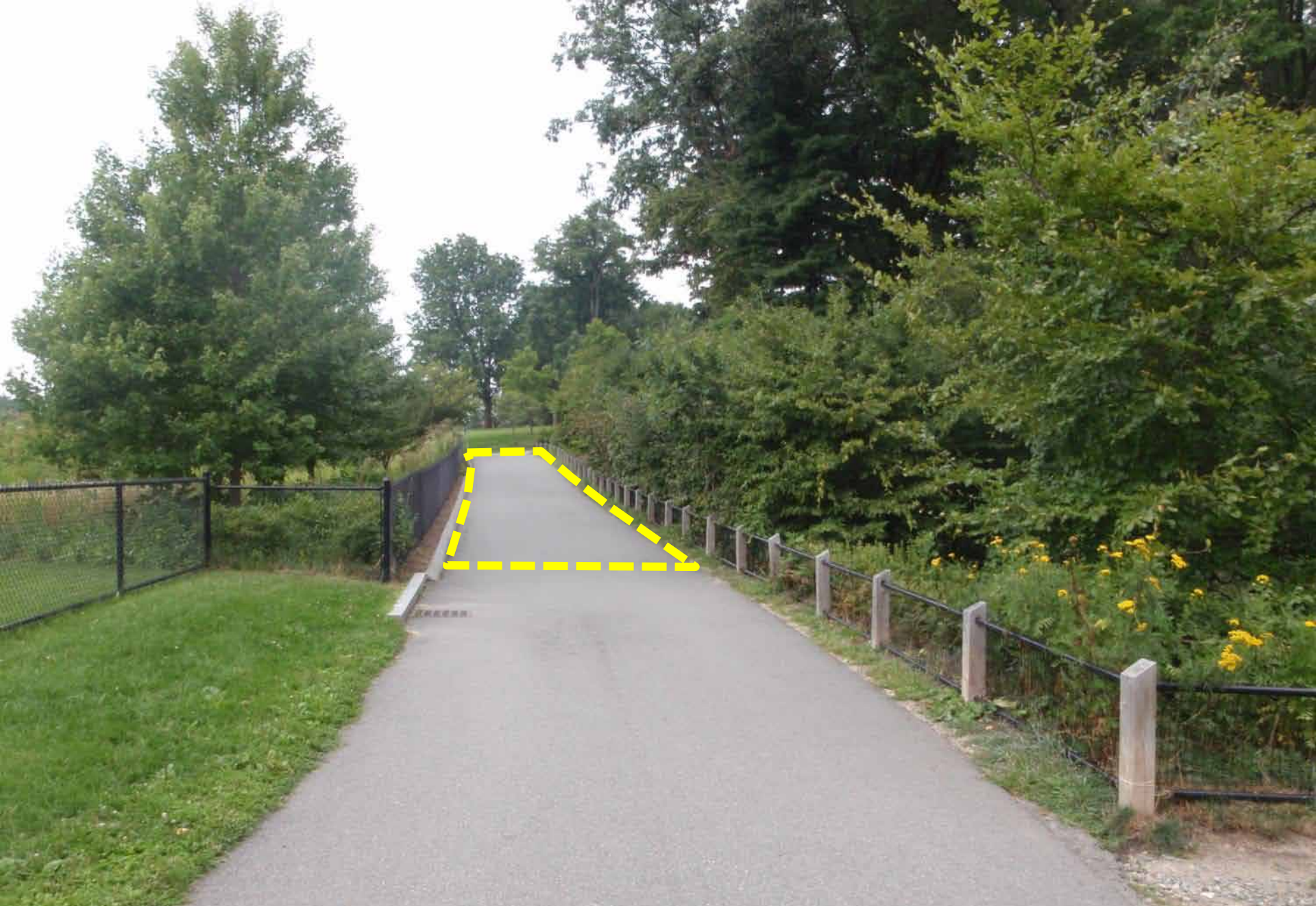
Crest Loop Path Option 2



Crest Loop Path Option 3

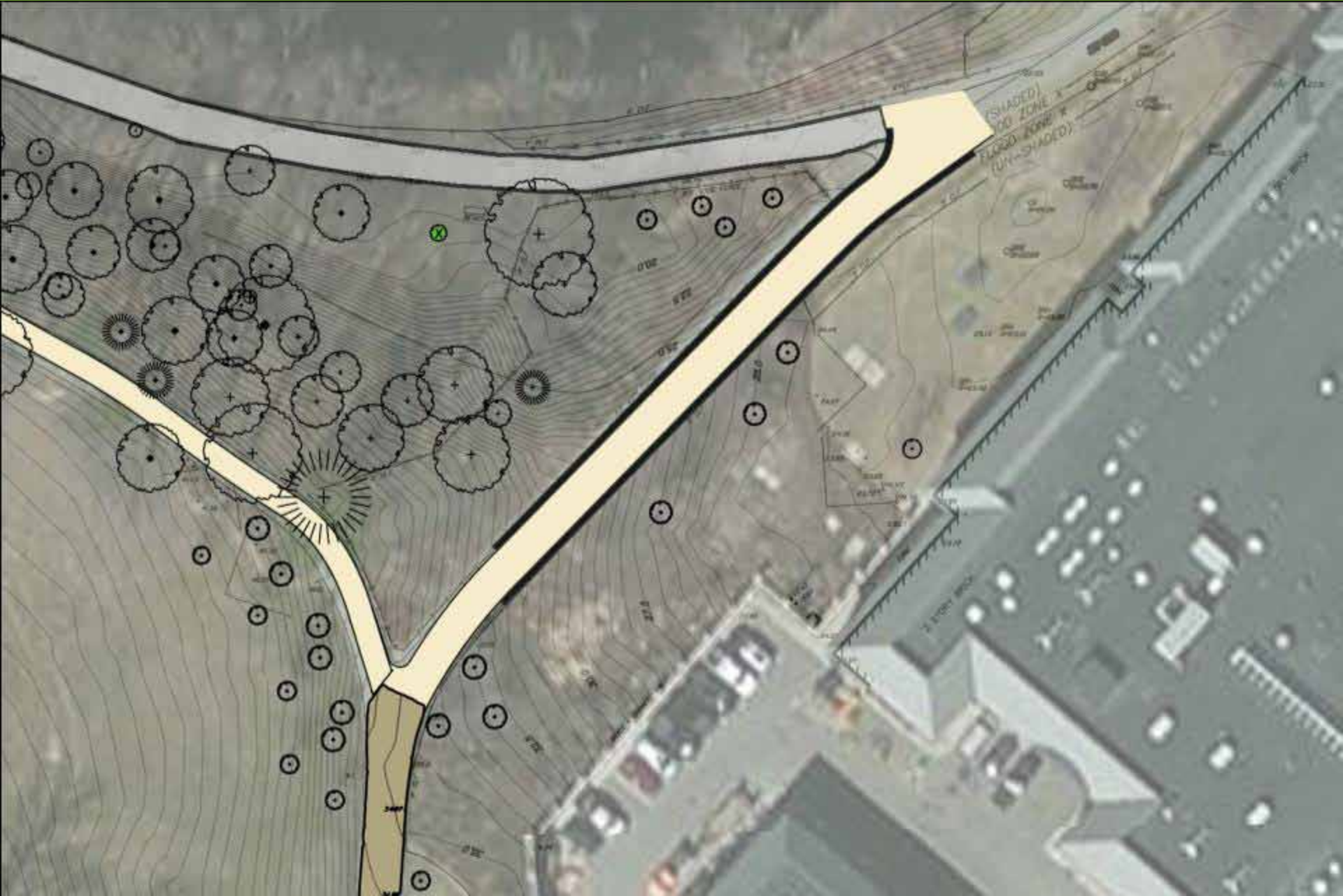






PERIMETER ROAD – 6.0% SLOPE

Crest Loop Path at Perimeter Road



Base Loop Path

- Remove Existing Mulch path
- Opportunity to improve wetland habitat at pond edge
- 4.8% connection from Perimeter Rd
- Expanded Wetland Habitat (Shrub swamp)



BASE LOOP PATH

Base Loop Path Option 1



Base Loop Path Option 2



Base Loop Path



Next Steps

Public Meeting 4
September 2012
Schematic Design

Comments due:
August 1, 2012
fpr@cambridgema.gov

Project Webpage:
[www.cambridgema.gov/
CWD/Kingsley.cfm](http://www.cambridgema.gov/CWD/Kingsley.cfm)

