



Hazard Mitigation Plan Update 2023

Public Meeting
June 13, 2023



**CITY OF
CAMBRIDGE**



WELCOME



Introduce yourself
in the **chat**



This meeting is
being **recorded**



For questions, please
use the **Q&A Function**



Susanne Rasmussen
Director of Environmental and
Transportation Planning



Leila Mekias
Climate Resilience
Project Planner



Robin Seidel
Project Manager,
Weston & Sampson



Emily Judson
Resiliency Planner,
Weston & Sampson



Also Joining Us Tonight:

Jim Wilcox
Department of Public
Works

Sam Lipson
Cambridge Public
Health Department

**Chief Colin S.
Walsh**
Fire Department

Janet Moonan
Project Technical Lead,
Weston & Sampson

AGENDA



Welcome & Introductions



Overview of the Hazard Mitigation Plan



Natural Hazards in Cambridge



Project Goals and Community Assets



Next Steps and Discussion



Conclude



AGENDA



Welcome & Introductions



Overview of the Hazard Mitigation Plan



Natural Hazards in Cambridge



Project Goals and Community Assets



Next Steps and Discussion

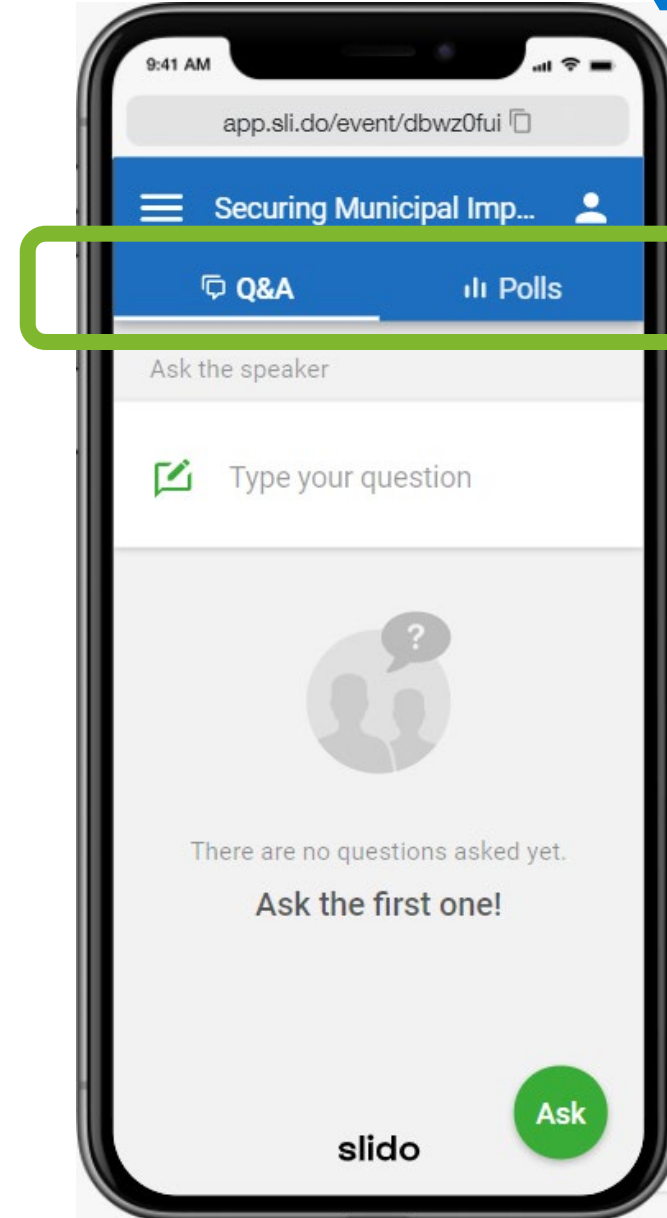


Conclude



JOIN US ON SLIDO!

1. Get your phone ready
2. Follow instructions or use the QR code



You can move between the Q&A tab and the polls tab!



What do you love about Cambridge?

The people

The health department!

street fairs

paths by the river

When memorial drive is closed for biking

Trees

Energy

我喜欢骑自行车

Walkable

Coffee shops

Parks

AGENDA



Welcome & Introductions



Overview of the Hazard Mitigation Plan



Natural Hazards in Cambridge



Project Goals and Community Assets



Next Steps and Discussion



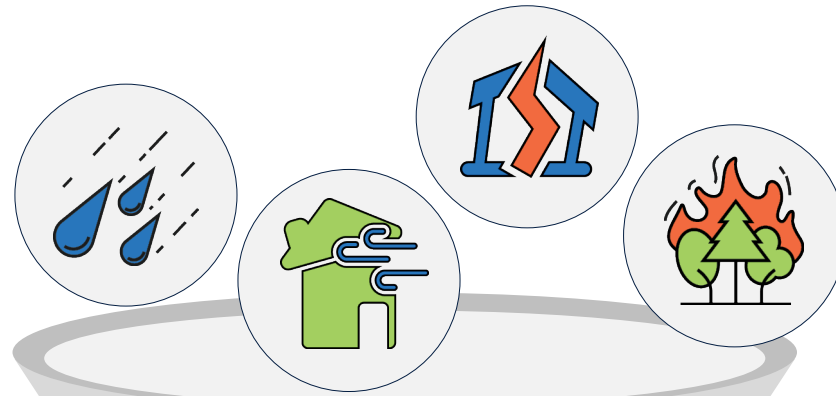
Conclude



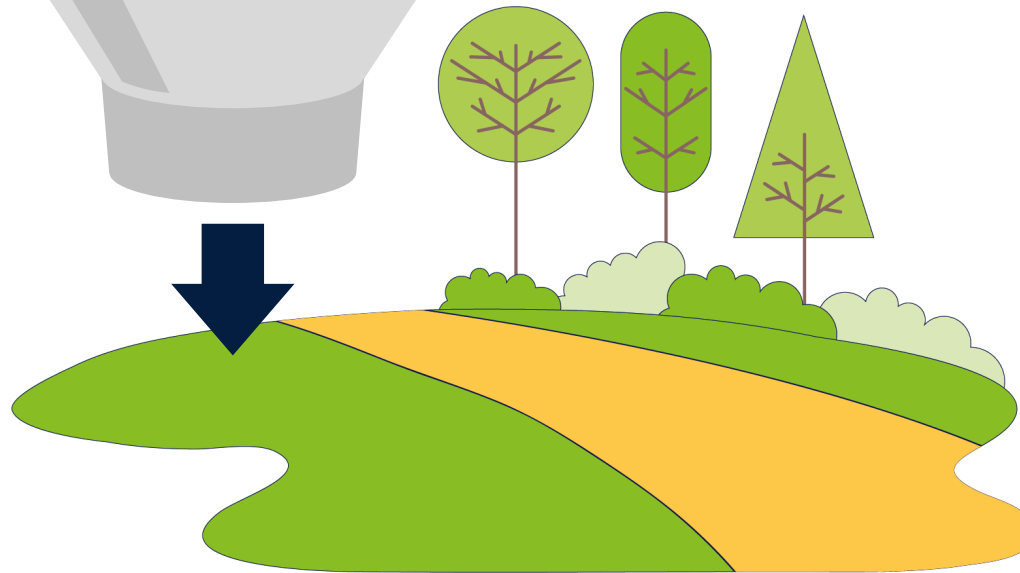
WHAT IS HAZARD MITIGATION?



Reduce impacts from
natural hazards...



...through plans,
projects, and services.



VALUE OF HAZARD MITIGATION PLANNING

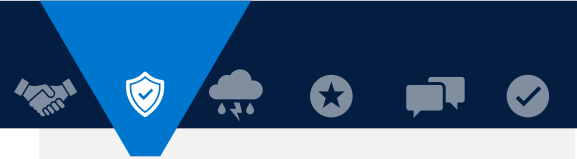
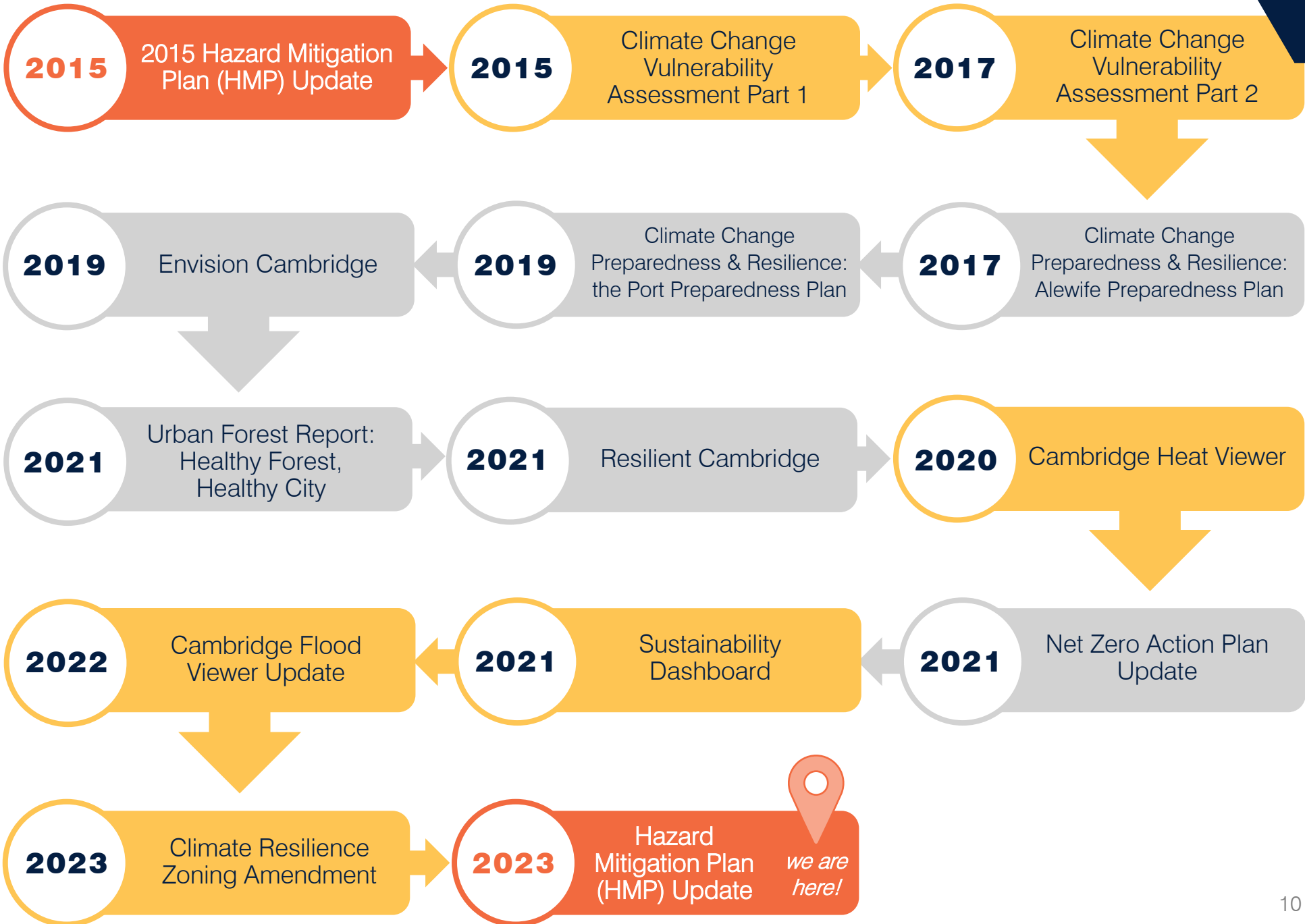


EVERY \$1 SPENT ON MITIGATION



SAVES \$6 ON DISASTER RECOVERY

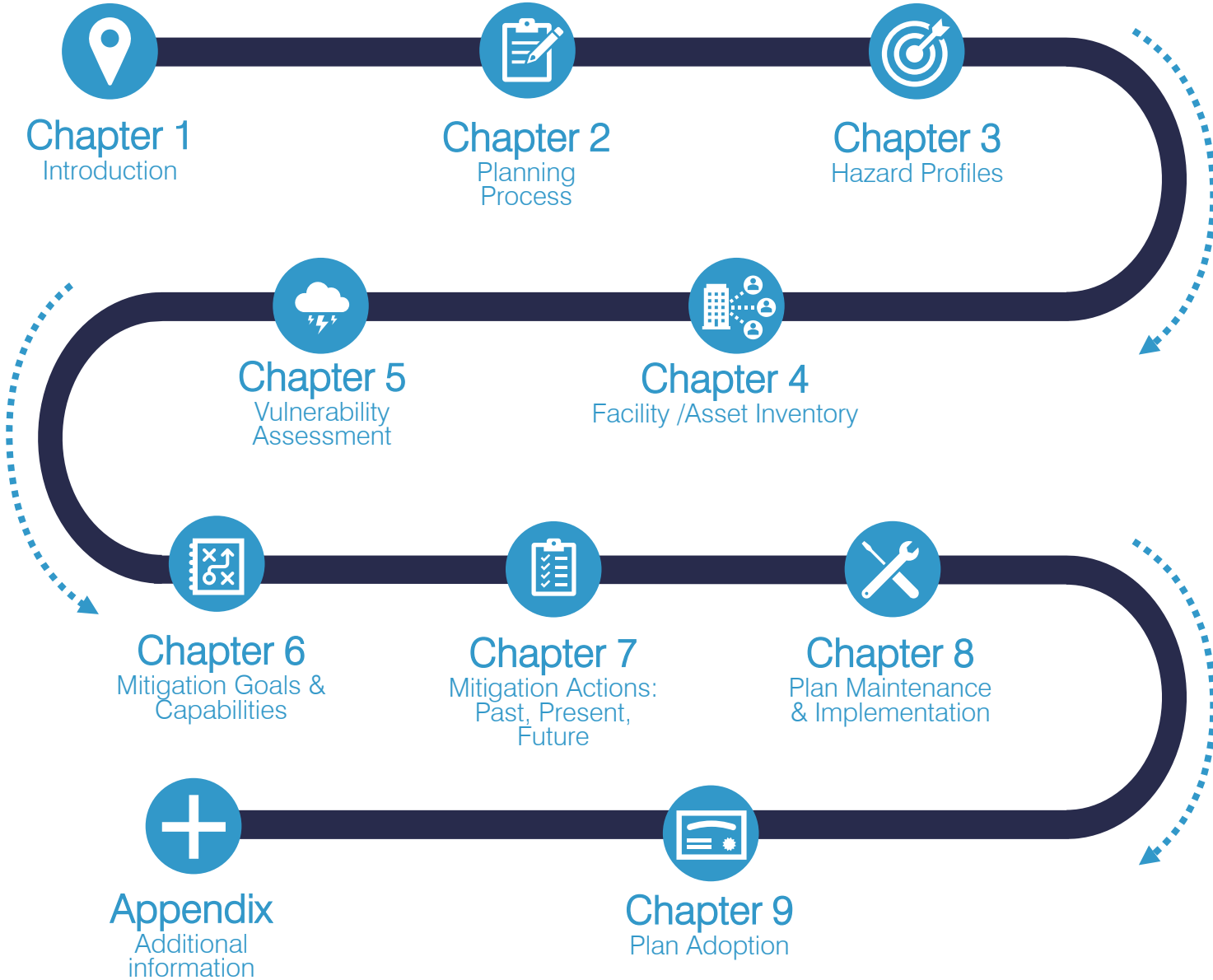




How the HMP is different from other efforts!

- HMPs
- City Plans
- City Actions

HMP OVERVIEW



HMP OVERVIEW



WHY ARE WE HERE TODAY?



Learn about
HMPs



Discuss local
hazards



Gather stories &
experiences



AGENDA



Welcome & Introductions



Overview of the Hazard Mitigation Plan



Natural Hazards in Cambridge



Project Goals and Community Assets



Next Steps and Discussion



Conclude



HAZARD PROFILES



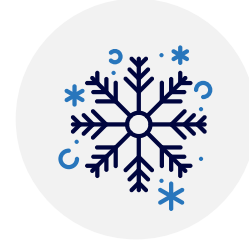
HURRICANES
/ TROPICAL
STORMS



INLAND
FLOODING



EXTREME
TEMPERATURES



SEVERE WINTER
WEATHER /
NOR'EASTERS



COASTAL
FLOODING



TSUNAMI



DROUGHT



WILDFIRE



EARTHQUAKES



TORNADOES

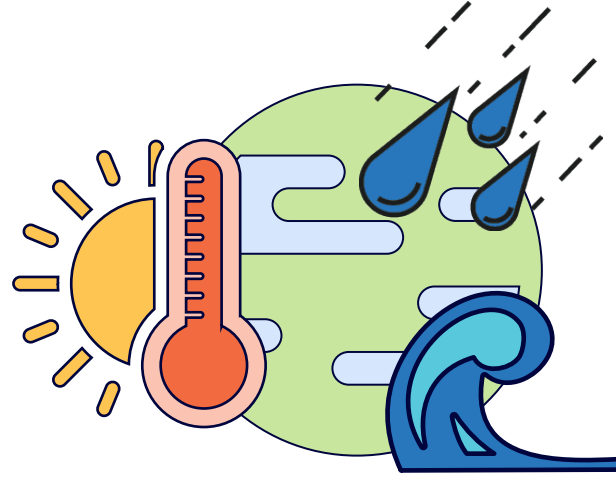


LANDSLIDES



INVASIVE
SPECIES

CLIMATE CHANGE



Climate is the average course or condition of the weather over a period of decades.

Climate change is manifested by **sea level rise and storm surge, extreme precipitation, and extreme heat.**

Cambridge is designed and built for the climate of the past. We must have a plan that looks forward.

- Resilient Cambridge Report

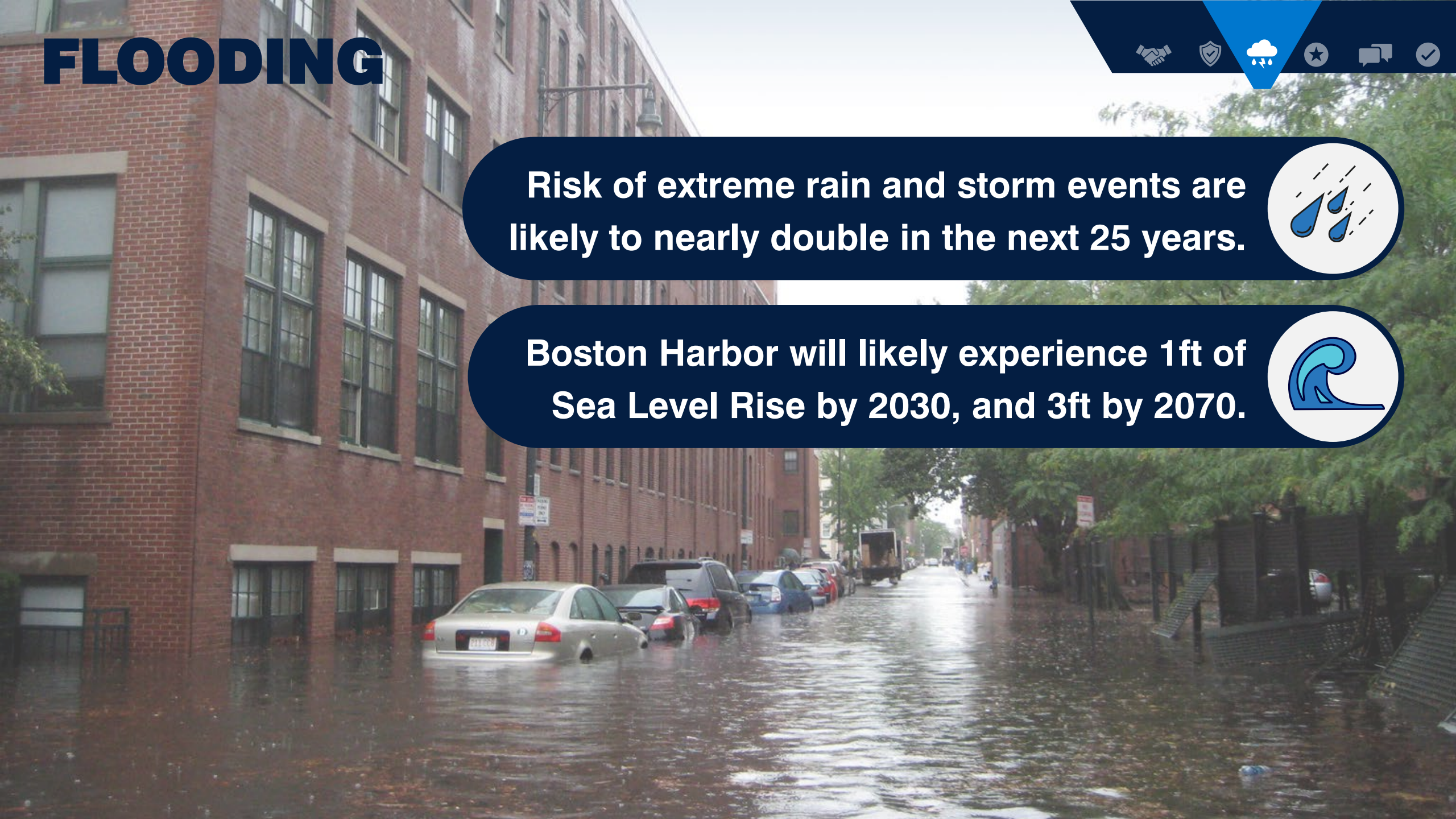
FLOODING



Risk of extreme rain and storm events are likely to nearly double in the next 25 years.



Boston Harbor will likely experience 1ft of Sea Level Rise by 2030, and 3ft by 2070.



FLOODING IMPACTS



Buildings and infrastructure



Evacuations



Emergency responders



Businesses and deliveries



Power outage and energy



Food availability and supply chain



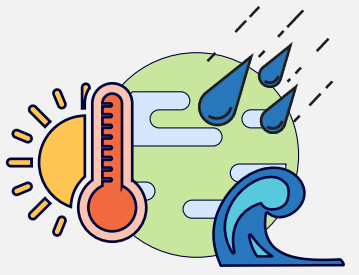
Shelters and people without housing



Ecosystem and soil stability



Water quality



Climate Change is expected to worsen flooding and impacts associated with flooding, especially for those with other environmental, health, and economic difficulties.

FLOODING



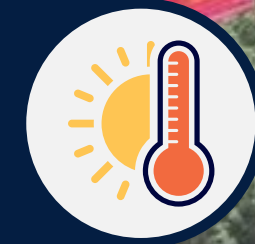
What are your experiences with flooding in Cambridge?

Answers:

- Splashed by cars when walking
- Driving conditions
- Street puddles not draining
- Water coming almost over Curb to sidewalks
- Wet socks
- My basement floods sometimes
- Some plants dying
- Have not experienced flooding in cambridge
- storm drains not draining



The number of days above 90° is expected to reach 30 days by 2030 and 60 days by 2070.



HEAT IMPACTS



Buildings and infrastructure



Schools and learning loss



Health, injuries, and mortality



Air quality and wildfires



Stress on energy systems



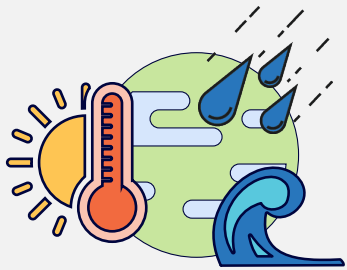
People outdoors or without housing



Animal and plant loss



Drought and Water Supply



Climate Change is expected to worsen heat trends and impacts associated with heat, especially for those with other environmental, health, and economic difficulties.

HEAT



How do you and your family stay cool when it's hot out?

Answers:

- Ceiling fans
- Air conditioning Water parks
- stay in shade
- Take kids to the park
- Windows shut shades down in day, AC as needed
- stay inside
- Stay indoors in ac
- Splash pads

SEVERE WINTER WEATHER



In Winter 2015, the City experienced a record-breaking 108.6 inches of snow.



SEVERE WINTER IMPACTS



Buildings and infrastructure



Repair costs and construction delays



Health, injuries, and mortality



Business and deliveries



Power outage



Food availability



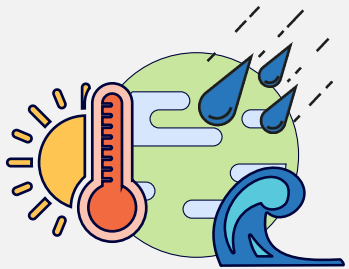
Shelter and displacement



Ecosystem and habitats



Re-shaping the river



Climate Change is expected to worsen severe winter weather and associated impacts, especially for those with other environmental, health, and economic difficulties.

SEVERE WINTER WEATHER



What's the biggest challenge for you and your family when it snows?

Answers:

- Visibility issues due to snow while commuting
- mountains on Cambridge streets
- Power outage
- 冻伤和摔倒
- Train delays
- Buses not arriving on time
- Walking to work on icy sidewalks
- can't bike in the snow
- Unshoveled sidewalks
- Difficulty on sidewalks
- icy streets
- Shoveling driveway
- Sidewalks not being cleaned
- Shoveling
- shoveling the sidewalk
- Slipping and falling

AGENDA



Welcome & Introductions



Overview of the Hazard Mitigation Plan



Natural Hazards in Cambridge



Project Goals and Community Assets



Next Steps and Discussion



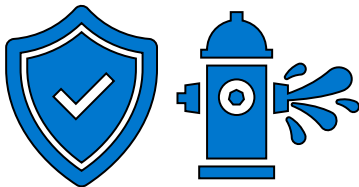
Conclude



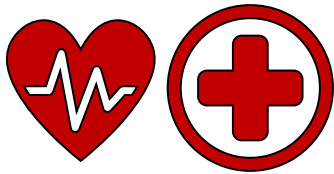
MITIGATION GOALS



COMMUNITY ASSETS



Safety & Security



Health & Medical



Transportation



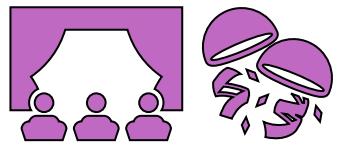
Food, Water, Shelter



Parks & Greenspace



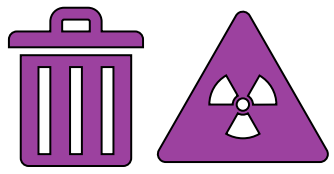
Communications



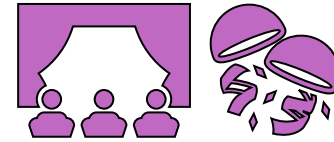
**Cultural, Historic,
& Events**



Energy



Hazardous Material

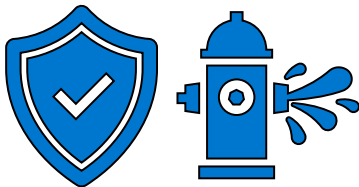


Which events are important for community resilience?

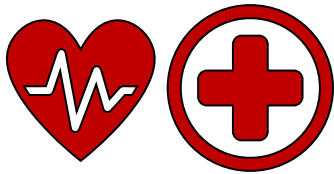
Answers:

- YWCA
- Settlement Houses (MFNH, CCC)
- Farmers market
- farmers market
- Fairs
- Dragon boat races

COMMUNITY ASSETS



Safety & Security



Health & Medical



Transportation



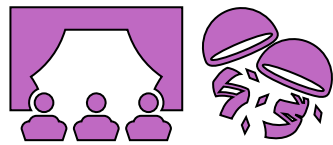
Food, Water, Shelter



Parks & Greenspace



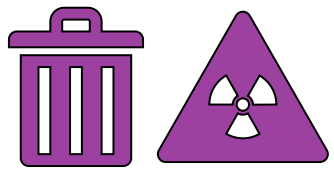
Communications



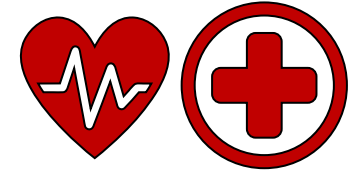
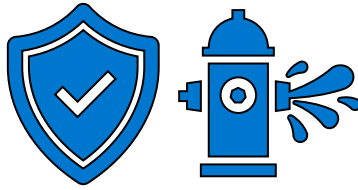
**Cultural, Historic,
& Events**



Energy



Hazardous Material



As you deal with extreme weather events, what buildings or services do you need to access?

Answers:

- City buildings (heating, cooling centers)
- Dunks
- pharmacy
- Grocery store
- gas station
- Gas station
- Electrical or plumbing help
- grocery store
- Offices
- Market

AGENDA



Welcome & Introductions



Overview of the Hazard Mitigation Plan



Natural Hazards in Cambridge



Project Goals and Community Assets



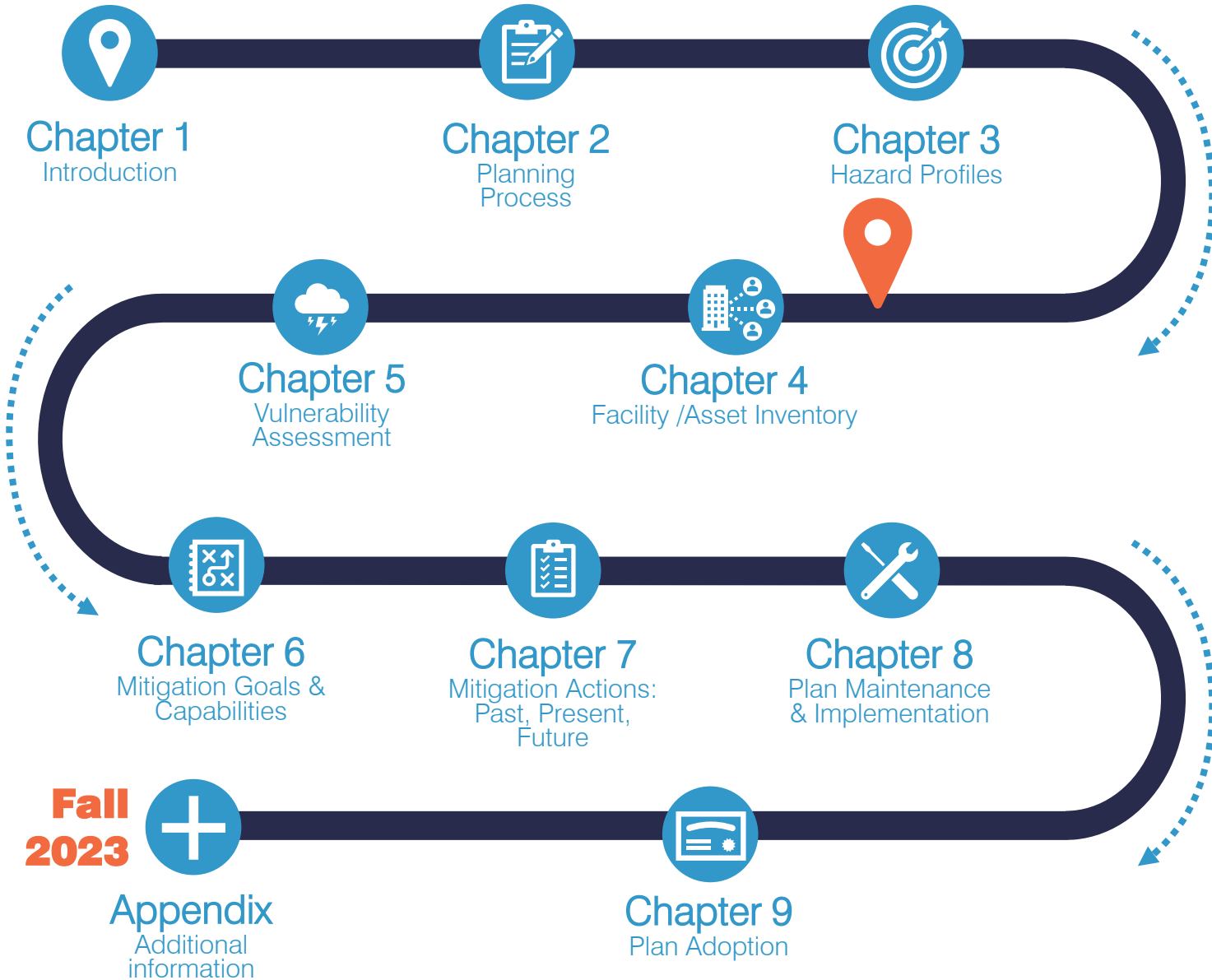
Next Steps + Discussion



Conclude



NEXT STEPS



- **Develop Actions**
- **Assess Capabilities**
- **Integrate Public Feedback**
- **Analyze Community Assets**

TAKE THE SURVEY!



The City of Cambridge is updating its Hazard Mitigation Plan for a more resilient, safe, and prepared community.



Share your experiences of living in Cambridge to help the City understand how it can improve. Please take this short, 5-minute survey to share your insights.

tinyurl.com/CambridgeSurveyHMP



Your input will help shape the **strategies, projects, policies,** and **decisions** the City makes regarding natural hazards.

Stay connected by visiting the City's website and look out for the final public meetings in September.



Questions or comments?



Hazard Mitigation Plan Update 2023

Thank You!



**CITY OF
CAMBRIDGE**

