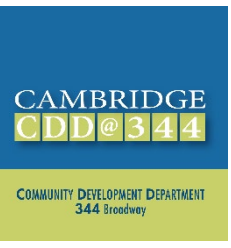
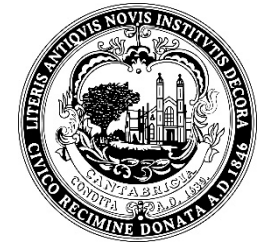
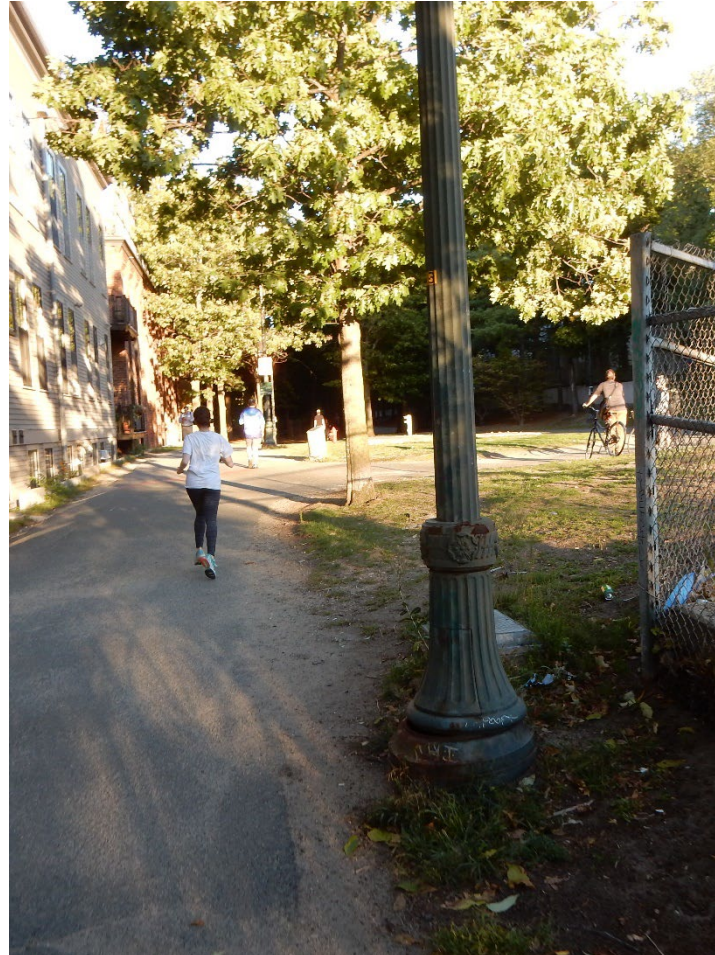


CITY OF CAMBRIDGE | OCTOBER 11, 2023
LINEAR PARK REDESIGN PROJECT



COMMITTEE ON PUBLIC PLANTING

PARK DESIGN UPDATES







PROJECT BACKGROUND

Linear Park Redesign

- Renovation of Linear Park from Russell Field to Somerville-Cambridge line
- New path surface, trees and understory plantings, lighting, drainage, signage, seating, and opportunities for play
- Public art & placemaking



LEGEND

-  Existing multi-use path
-  Multi-use path in planning, design, or under construction





PUBLIC ENGAGEMENT

Public meetings

- Public Meeting 1: May 2022
- Public Meeting 2: November 2022
- Public Meeting 3: June 2023

In person events

- Site walk 1: May 2022
- Site walk 2: June 2022
- Paint the Path event: June 2022
- Park Design Tabling Event: June 2023





SURVEY

Key responses to 2022 open-ended survey questions

~615 responses, over 2,000 open ended comments

1. What works well about Linear Park?

- The park and path itself as a place to walk, bike, and exercise
- Shade, trees, proximity to Alewife Station, Mass Ave and Davis Square

2. What does not work well about Linear Park?

- Crowded, narrow, need more space for different users
- Lack of benches

3. It would be great if the Linear Park project included:

- More trees and enhanced landscaping
- Drinking fountains, benches, and tables



PROJECT VISION

The Linear Park Redesign project will reimagine a beloved and highly used community park and multi-use pathway.

The **outcomes** of a redesigned Linear Park are:

- To be an inclusive space and accommodating of all users
- Create an engaging community open space
- Strengthen neighborhood connections
- Be a resilient and biodiverse landscape suited for a changing climate

To **enhance the experience** of path users and park visitors, we will:

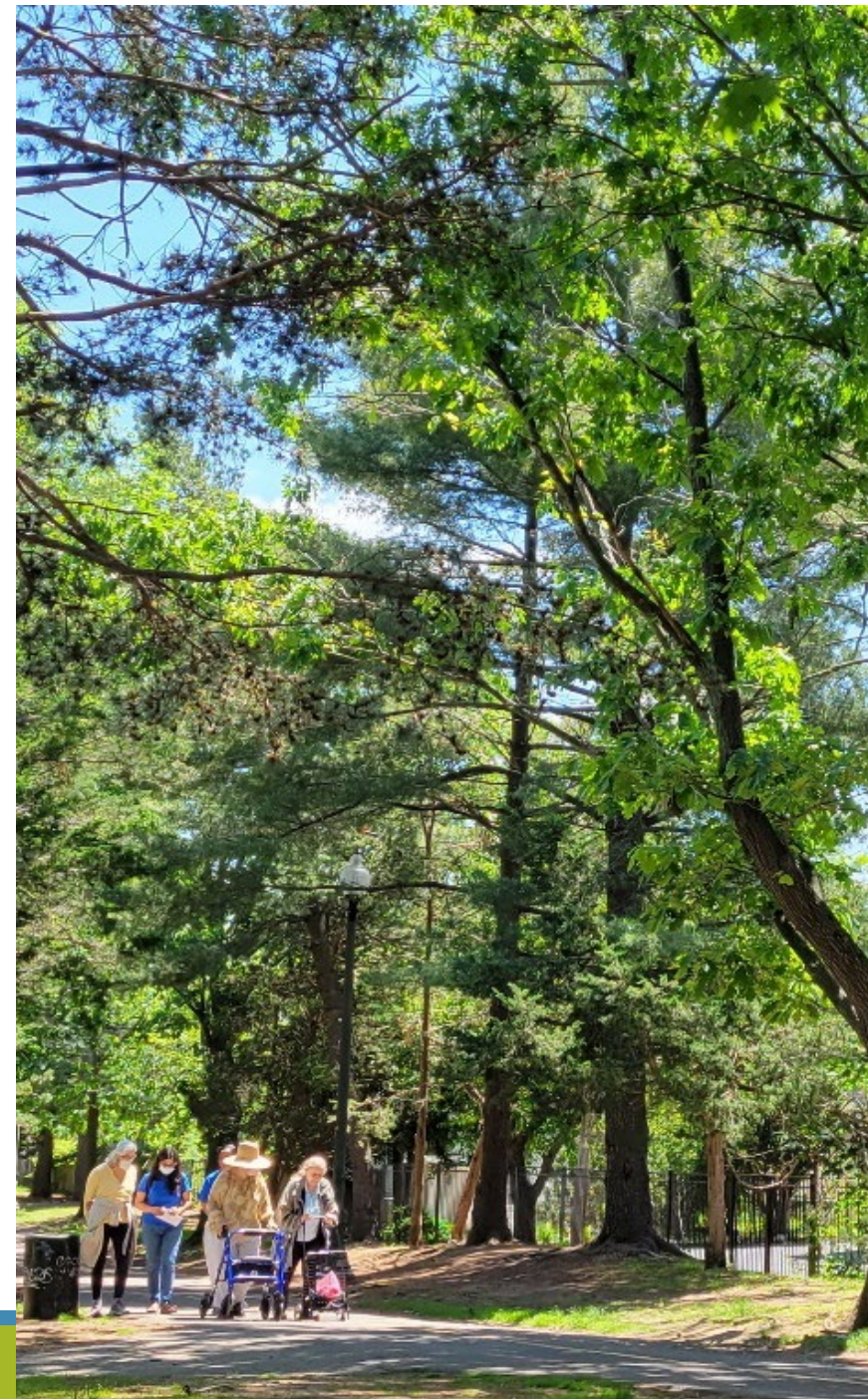
- Include playful and creative features
- Add new seating for all to enjoy
- Widen and differentiate paths of travel, where space allows



PROJECT GOALS

Linear Park Project Goals

- Widen the path where space allows for the high volume and mix of different users
- Add a variety of new seating and opportunities for natural play
- Establish stronger community access
- Retain tree canopy, add additional trees and understory plantings
 - Design park and pathway to minimize root zone impacts
 - Establish better soil and growing conditions
 - Minimize tree removals wherever possible with effort at transplanting





PLANT PALETTE

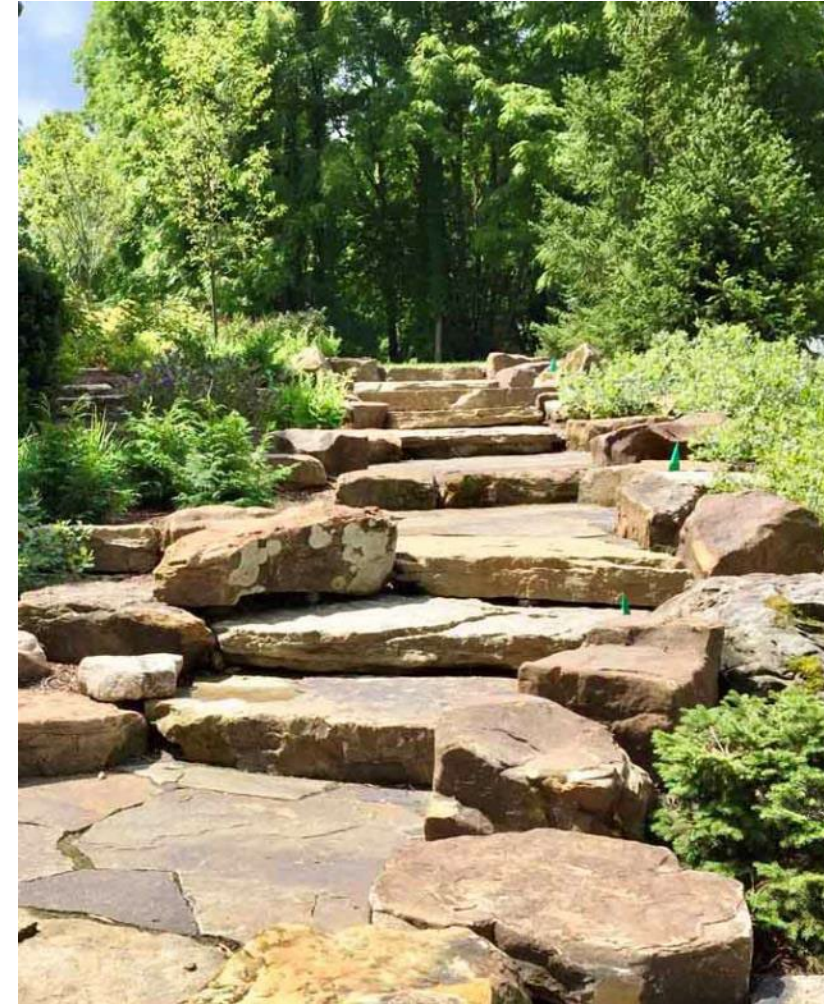
Landscape Character





MATERIALS PALETTE

- Granite
- Goshen
- Stone dust surface





PLAY PALLETTE

Natural material for play

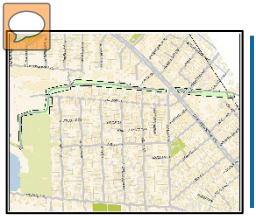




STONE

- Play
- Explore off the main path
- Retain slope





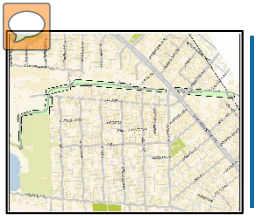
PATH AMENITIES

New Lighting

- Install city parks standard (CREE)
- Many existing poles along Linear Park in poor condition



Toomey Park in East Cambridge



PATH AMENITIES

Other Path Furniture

- Variety of seating types
 - Swinging bench like at Trolley Sq
 - Clustered seating, Cambridge Common
- Trash and recycling containers
- Water fountain & bottle filler station
- Emergency call boxes



Existing Linear Park



Proposed path design





TREES

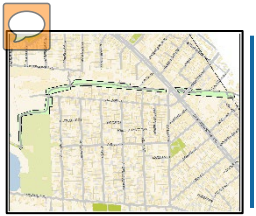
Top Priority is to Maintain Healthy & Mature Canopy

➤ Proposed removals include:

Location	# of Removals	Caliper Inches	Reasoning	Species
Tyler Court to Cedar Street	5	12" x 5	<ul style="list-style-type: none">• Poor condition• Hollow, signs of rot and decay	Cherry



A decaying Cherry tree planned for removal



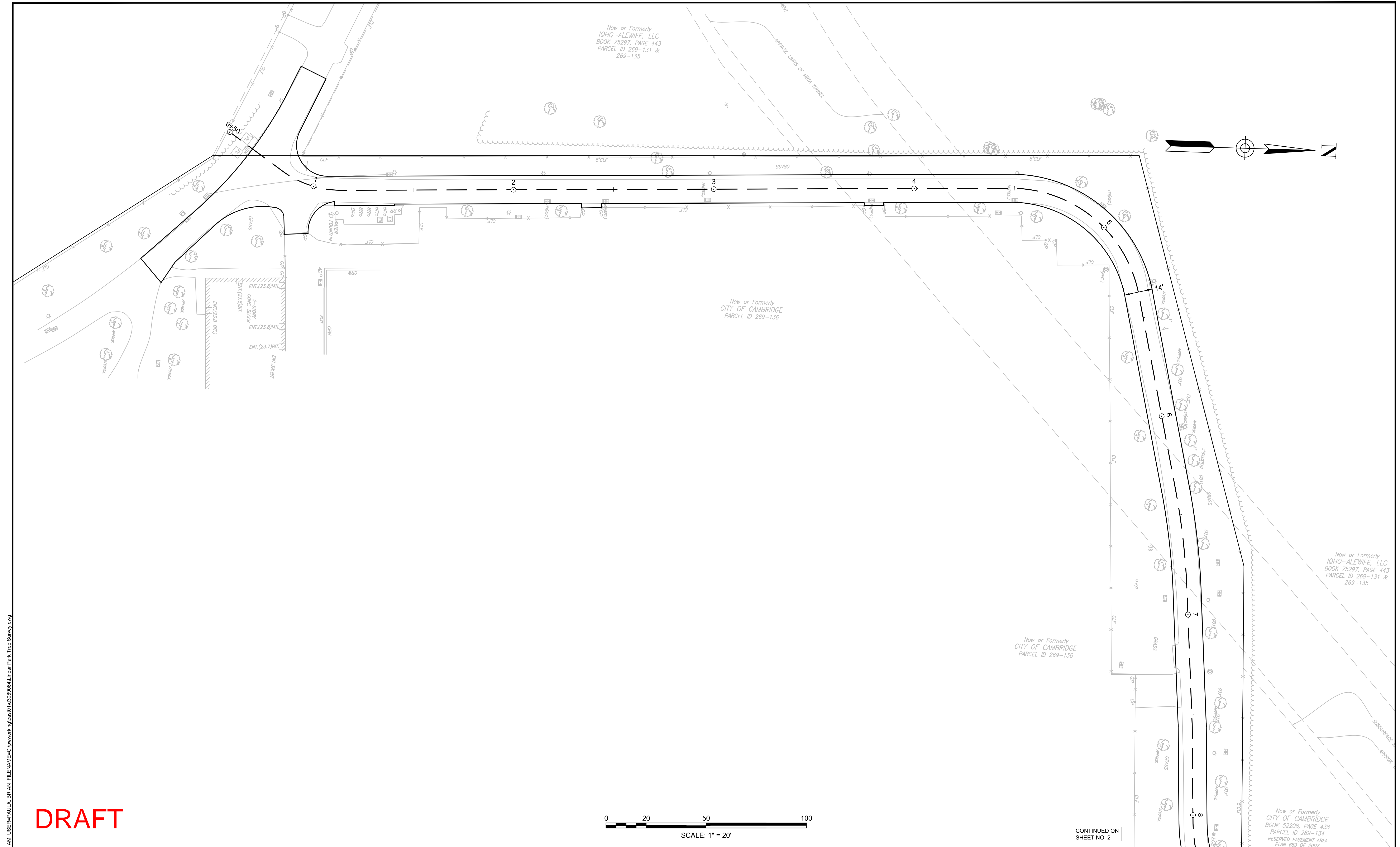
PROPOSED PLANTING PLAN

Top Priority is to Add Additional Tree Canopy

- We estimate that we'll plant between 120 and 150 trees as part of the Linear Park redesign process
- That's roughly 200-300 new caliper inches



Photo showing a Miyawaki forest in Danehy Park



DRAFT

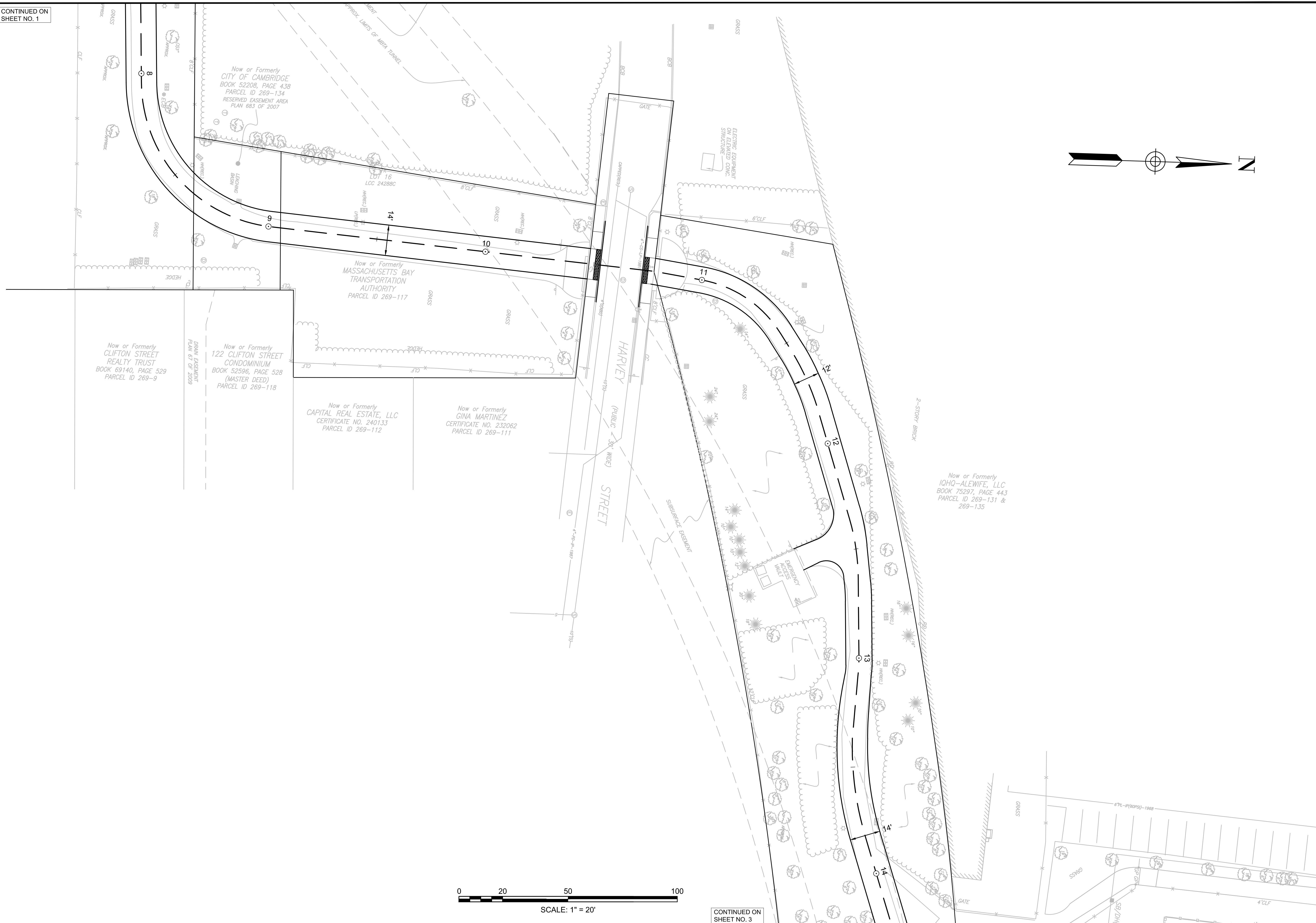
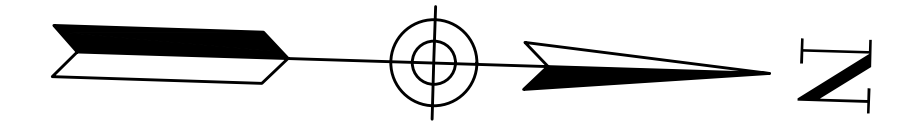


CONTINUED ON SHEET NO. 2

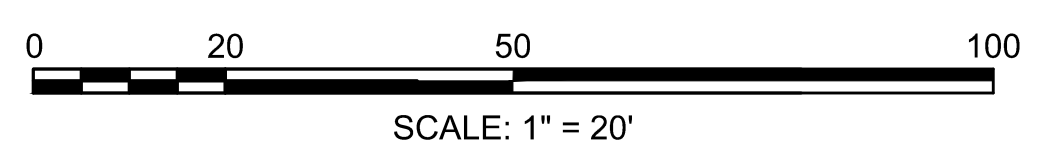
PLOT DATE: 10/6/2023 11:41:00 AM USER: PAULLA_BRIAN FILENAME: C:\www\rdg\east\1\308064\Linear Park Tree Survey.dwg

<p>HALVORSON Tight & Bond STUDIO</p> <p>25 KINGSTON ST. BOSTON MA 02111-2209 PHONE: 617-546-0380 WWW.HALVORSONDESIGN.COM</p>	<p>HDR HDR ENGINEERING, INC. 99 HIGH STREET, SUITE 2300 BOSTON, MASSACHUSETTS 02110-2378 (617) 357-7700</p>	<p>Scale</p> <p>Date 10-6-2023</p> <p>Job No.</p> <p>Designed by</p> <p>Drawn by</p> <p>Checked by No. Description Date</p> <p>Approved by REVISIONS</p>	<p>CAMBRIDGE CDD@344</p> <p>COMMUNITY DEVELOPMENT DEPARTMENT 344 Involvement</p>	<p>Client CITY OF CAMBRIDGE, MA</p> <p>Project ALEWIFE LINEAR PARK RECONSTRUCTION PROJECT</p> <p>Drawing PATH ALIGNMENT PLAN</p>	<p>Sheet 1</p> <p>File No.</p>
		<p>Now or Formerly IOHQ-ALEWIFE, LLC BOOK 75297, PAGE 443 PARCEL ID 269-131 & 269-135</p>		<p>Now or Formerly CITY OF CAMBRIDGE PARCEL ID 269-136</p>	

CONTINUED ON SHEET NO. 1






DRAFT

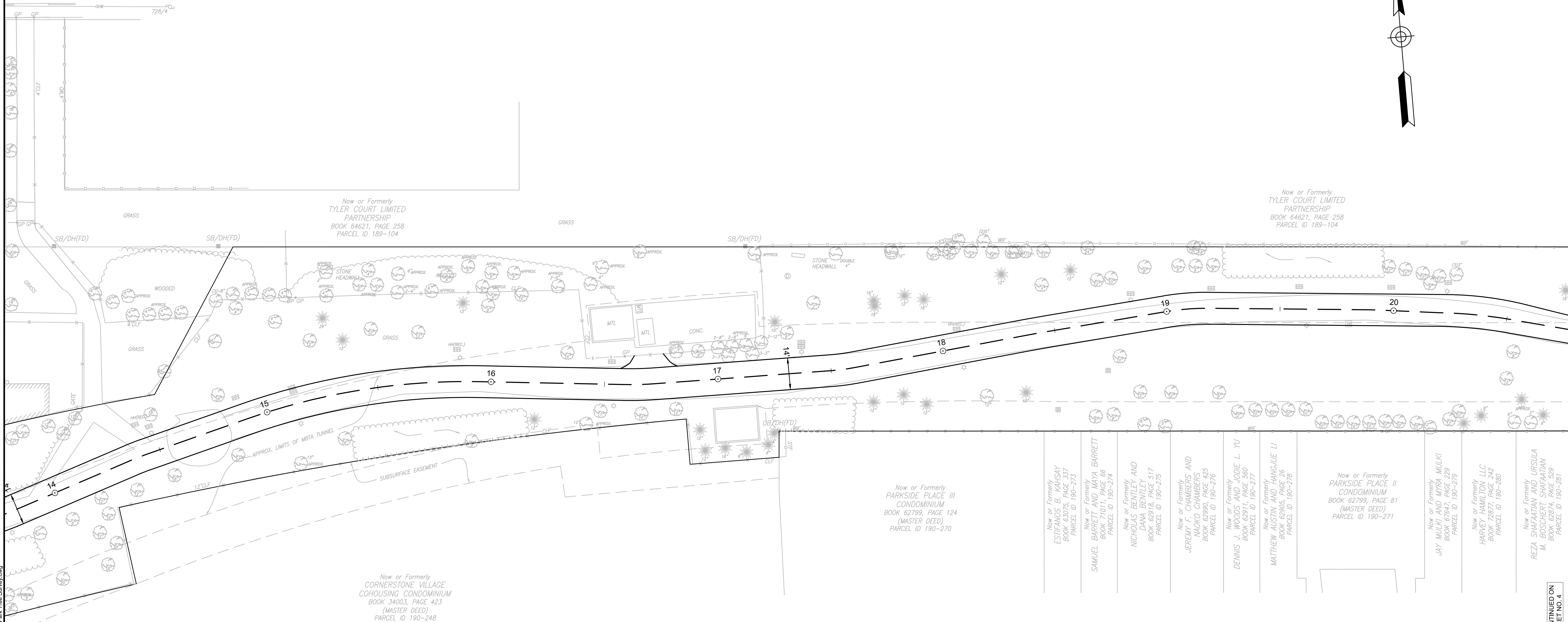


CONTINUED ON SHEET NO. 3

PLOT DATE=10/6/2023 11:45:55 AM USER=PAULLA.BRIAN FILENAME=C:\work\drwg\alewife\Linear Park Tree Survey.dwg

 HALVORSON <i>Tight&Bond</i> STUDIO <small>25 KINGSTON ST. BOSTON MA 02111-2209 PHONE 617-536-0380 WWW.HALVORSONDESIGN.COM</small>	 HDR ENGINEERING, INC. <small>99 HIGH STREET, SUITE 2300 BOSTON, MASSACHUSETTS 02110-2378 (617) 357-7700</small>	Scale Date Job No. Designed by Drawn by Checked by Approved by	10-6-2023 	 <small>CAMBRIDGE CDD@344 COMMUNITY DEVELOPMENT DEPARTMENT 344 HALLOWELL</small>	Client Project Drawing	CITY OF CAMBRIDGE, MA ALEWIFE LINEAR PARK RECONSTRUCTION PROJECT PATH ALIGNMENT PLAN	Sheet File No.	2
		No. Description Date			REVISIONS			

WHITTFMORF (PUBLIC - 40' WIDE) AVENUE
12'CS-#160793-3000



CONTINUED ON SHEET NO. 2

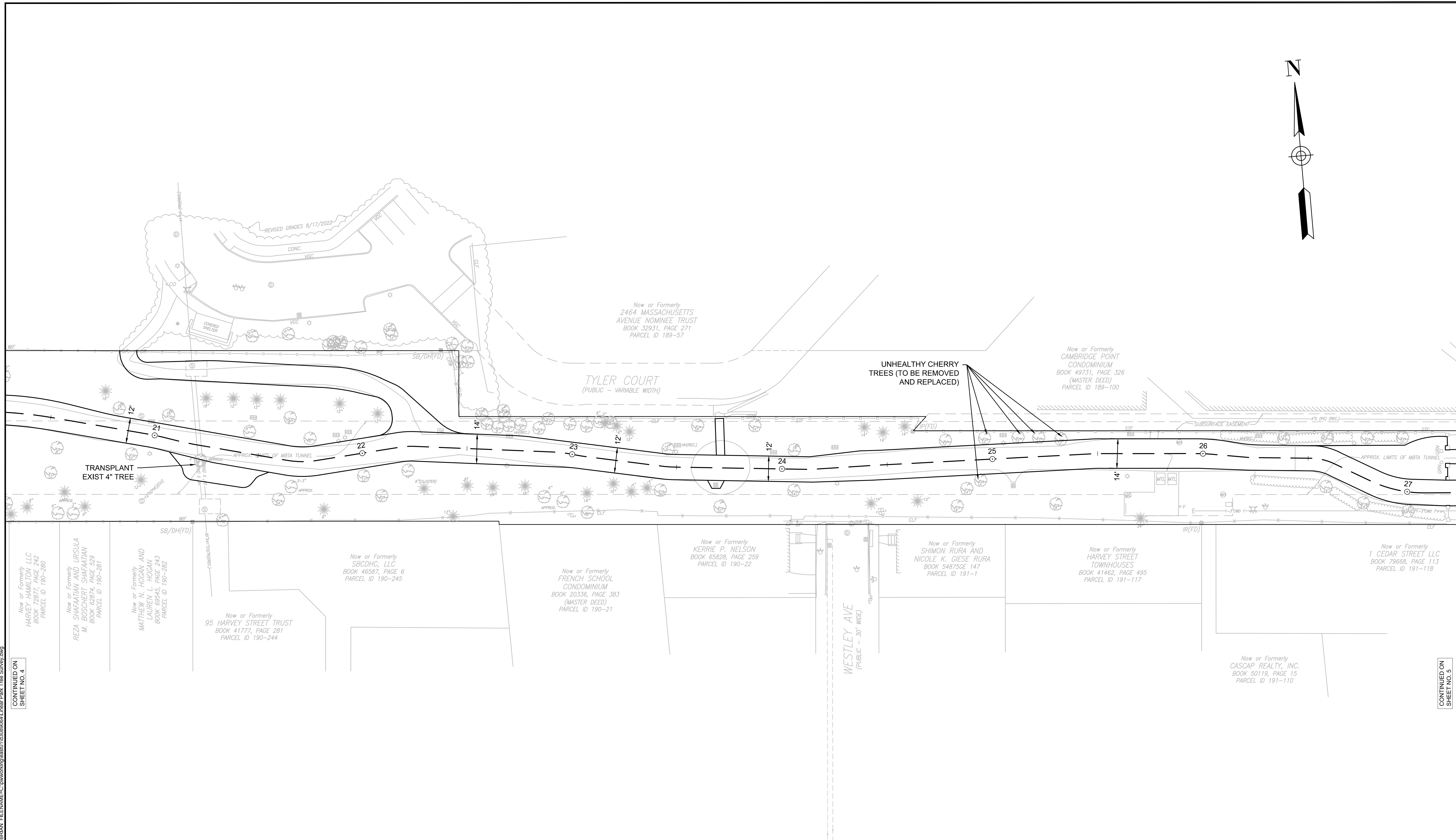
CONTINUED ON SHEET NO. 4

DRAFT



PLOT DATE: 10/6/2023 11:46:44 AM USER: PAULLA.BRIAN FILENAME: C:\www\drgead\1\308064\Linear Park Tree Survey.dwg

		Scale Date: 10-6-2023		Client: CITY OF CAMBRIDGE, MA	Sheet: 3
		Job No. Designed by Drawn by Checked by: No. Approved by		Project: ALEWIFE LINEAR PARK RECONSTRUCTION PROJECT Drawing: PATH ALIGNMENT PLAN	File No.



PLOT DATE: 10/6/2023 11:47:16 AM USER: PAULLA_BRIAN FILENAME: C:\www\rdg\east01\3080804\Linear Park Tree Survey.dwg

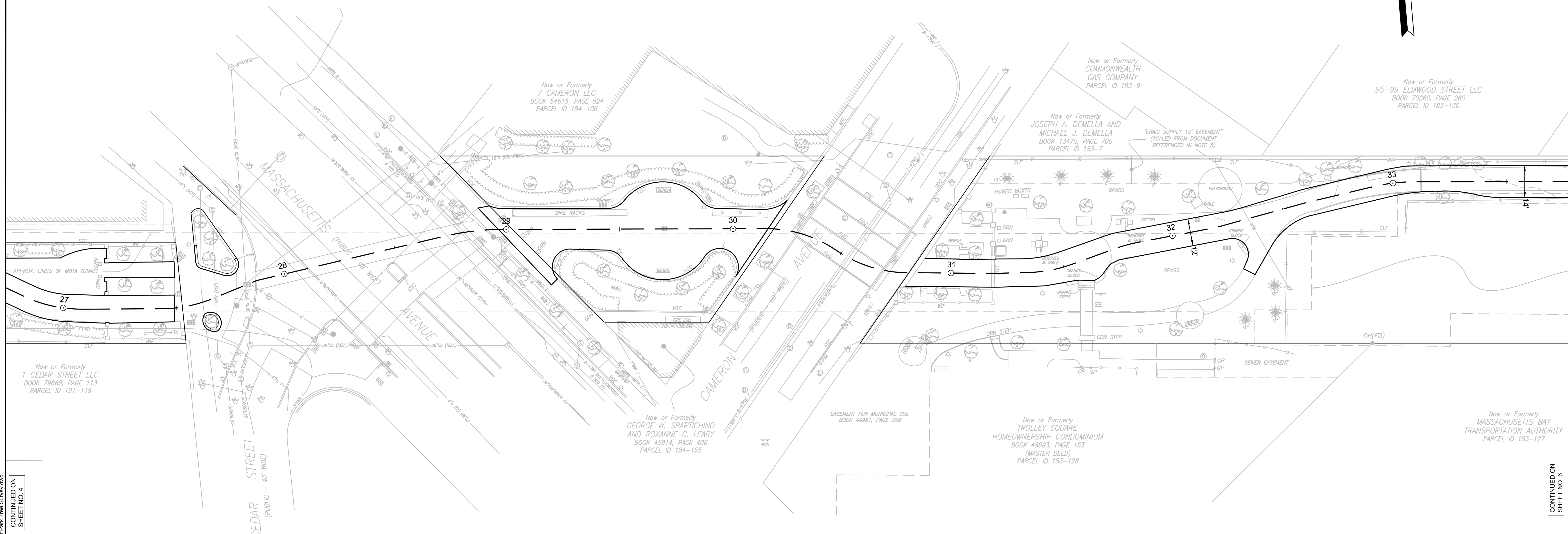
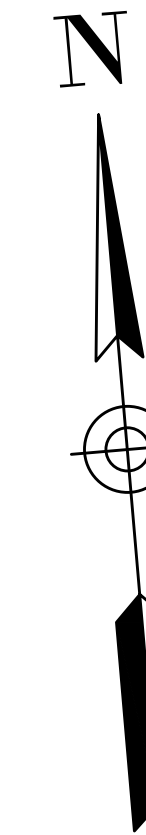
CONTINUED ON SHEET NO. 4

CONTINUED ON SHEET NO. 5

DRAFT



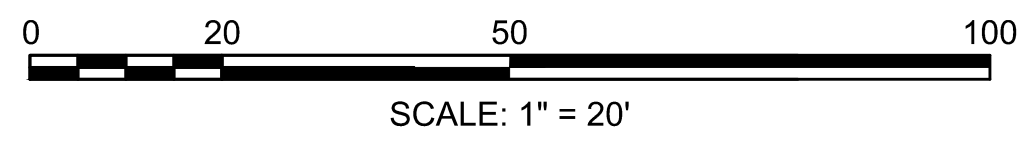
		Scale			Client	CITY OF CAMBRIDGE, MA	Sheet	4
		Date	10-6-2023		Project	ALEWIFE LINEAR PARK RECONSTRUCTION PROJECT		
		Job No.		Drawing		PATH ALIGNMENT PLAN	File No.	
		Designed by						
		Drawn by						
		Checked by	No.	Description	Date			
		Approved by		REVISIONS				



PLOT DATE: 10/06/2023 11:48:39 AM USER: PAULLA, BRIAN FILENAME: C:\pwworking\hdr\ssad\1\103090904\Linear Park Tree Survey.dwg
CONTINUED ON SHEET NO. 4

CONTINUED ON SHEET NO. 6

DRAFT



HALVORSON
Tight&Bond STUDIO

25 KINGSTON ST. BOSTON, MA 02111-2900
PHONE: 617-238-0388
WWW.HALVORSONDESIGN.COM

HDR
HDR ENGINEERING, INC.

99 HIGH STREET, SUITE 2300
BOSTON, MASSACHUSETTS 02110-2378
(617) 357-7700

Scale			
Date	10-6-2023		
Job No.			
Designed by			
Drawn by			
Checked by	No.	Description	Date
Approved by		REVISIONS	

CAMBRIDGE
CDD@344

COMMUNITY DEVELOPMENT DEPARTMENT
344 Insiders

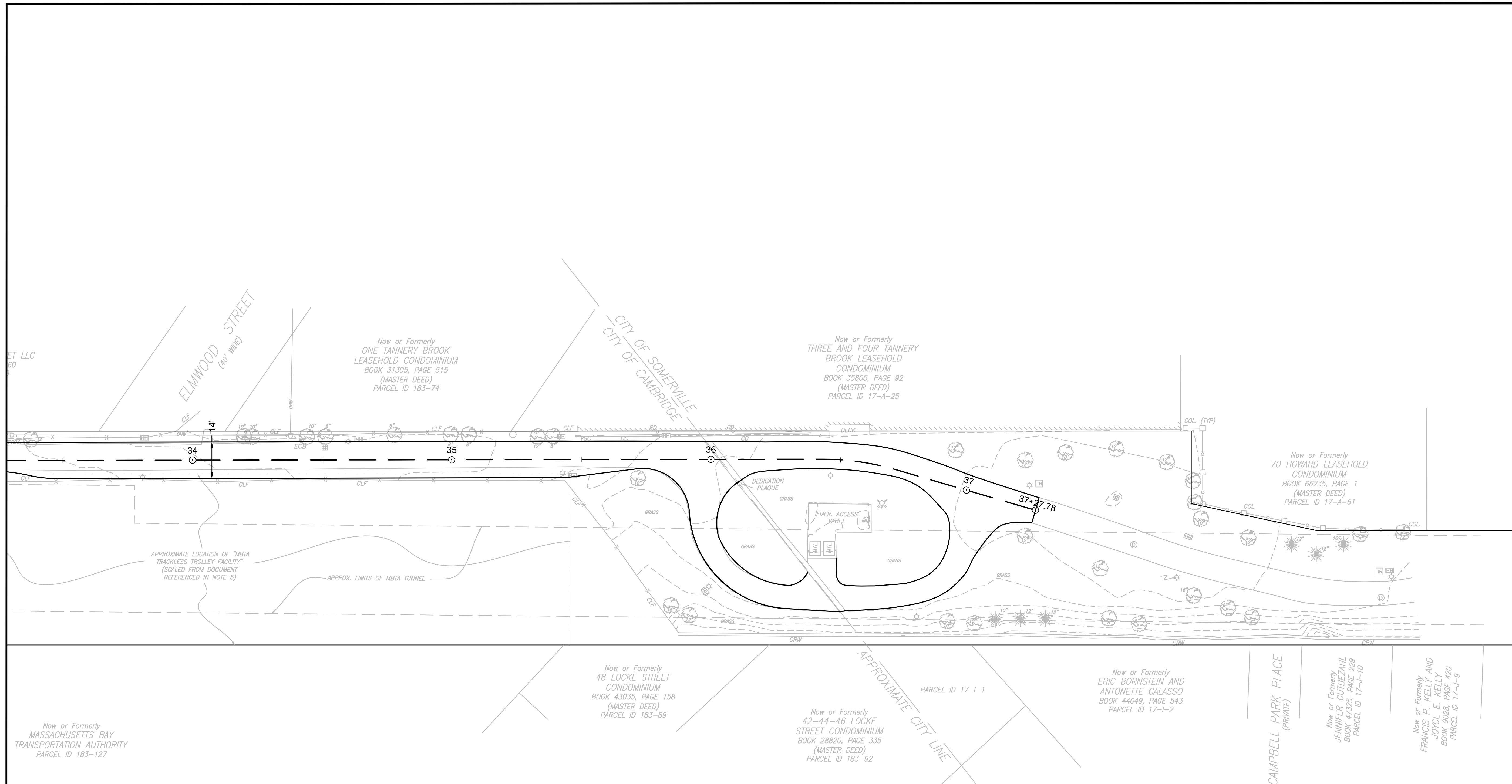
Client: CITY OF CAMBRIDGE, MA

Project: ALEWIFE LINEAR PARK RECONSTRUCTION PROJECT

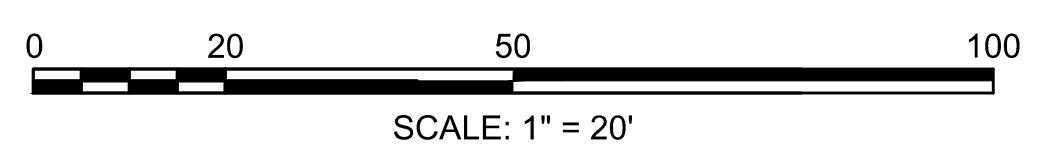
Drawing: PATH ALIGNMENT PLAN

Sheet: 5

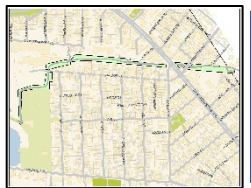
File No.



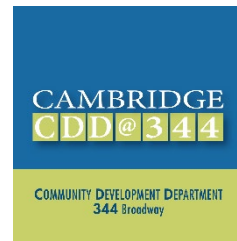
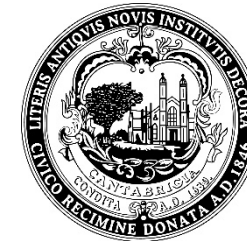
DRAFT



 <small>25 KINGSTON ST. BOSTON MA 02111-2209 PHONE 617-536-0390 WWW.HALVORSONDESIGN.COM</small>	 <small>99 HIGH STREET, SUITE 2300 BOSTON, MASSACHUSETTS 02110-2378 (617) 357-7700</small>	Scale Date: 10-6-2023	 <small>COMMUNITY DEVELOPMENT DEPARTMENT 344 Halway</small>	Client: CITY OF CAMBRIDGE, MA	Sheet: 6
		Job No. Designed by Drawn by Checked by: No. Approved by		Description Date REVISIONS	Project: ALEWIFE LINEAR PARK RECONSTRUCTION PROJECT Drawing: PATH ALIGNMENT PLAN



THANK YOU



COMMUNITY DEVELOPMENT DEPARTMENT

Charlie Creagh, AICP
Transportation Project Planner
ccreagh@cambridgema.gov

Gary Chan
Neighborhood Planner
gchan@cambridgema.gov

Bill Deignan
Transportation Program Manager
wdeignan@cambridgema.gov

DEPARTMENT OF PUBLIC WORKS

Kevin Beuttell
Supervising Landscape Architect
kbeuttell@cambridgema.gov

TRAFFIC, PARKING & TRANSPORTATION

Stephen Meuse, PE
Street Design Project Manager
smeuse@cambridgema.gov