

0 10 20 40



Prepared By: CBT Architects

Figure 1.3
Existing Site Survey

Mass+Main
Cambridge, Massachusetts



Intersection of Columbia Street and Bishop Allen Drive



Project Site frontage along Massachusetts Avenue



Lafayette Square along Massachusetts Avenue

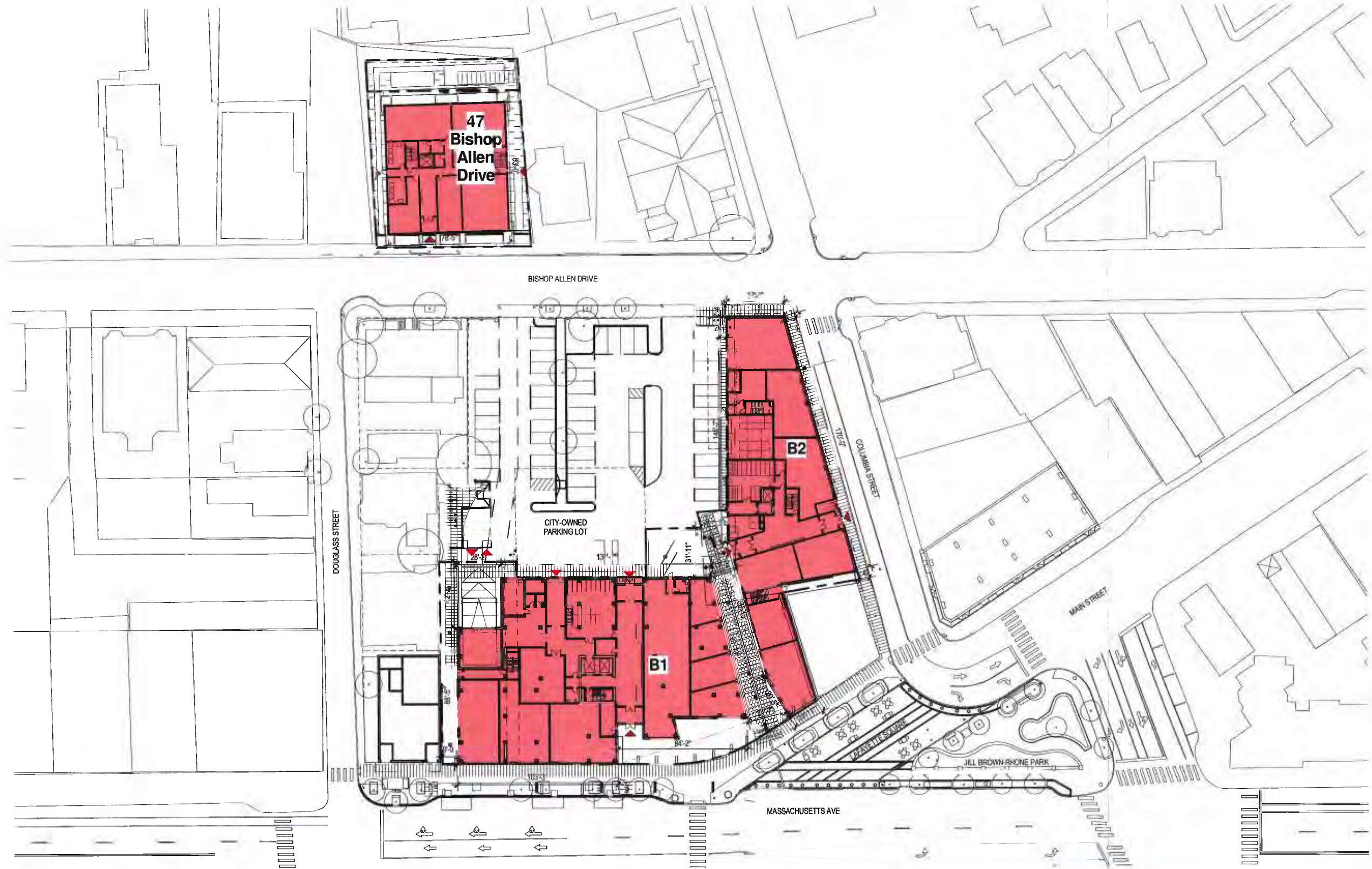


Lafayette Square and Columbia Street



Figure 1.5
Existing Conditions Photos

Mass+Main
Cambridge, Massachusetts



Prepared By: CBT Architects

Figure 1.6b

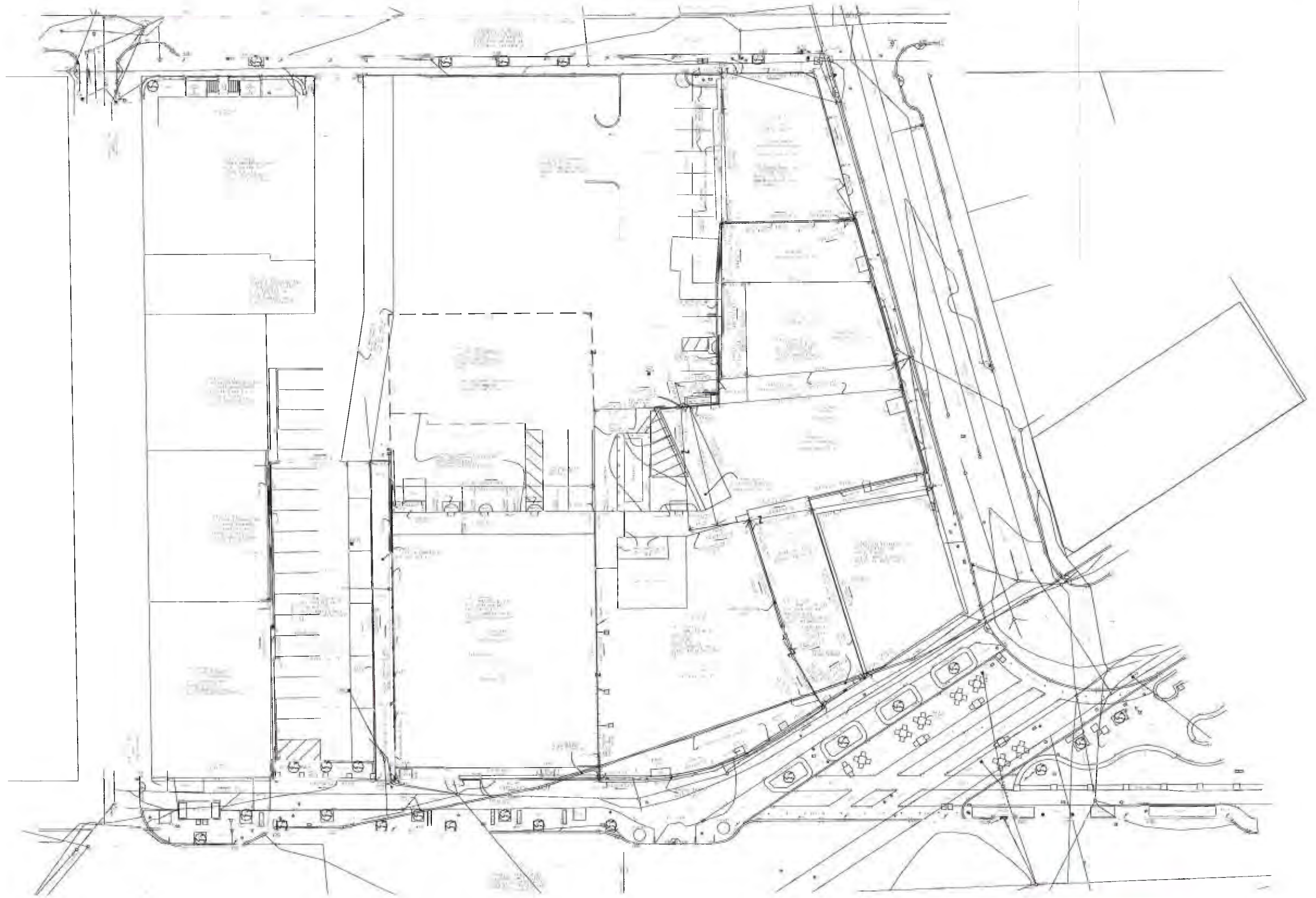
Proposed Development Plan
Mass+Main and 47 Bishop Allen Drive

Mass+Main
Cambridge, Massachusetts



Prepared By: CBT Architects
 Figure 1.8a
 Building B-1 Ground Floor Plan

Mass+Main
 Cambridge, Massachusetts



Prepared By: CBT Architects

Figure 1.3
Existing Site Survey

Mass+Main
Cambridge, Massachusetts



Intersection of Columbia Street and Bishop Allen Drive



Project Site frontage along Massachusetts Avenue



Lafayette Square along Massachusetts Avenue

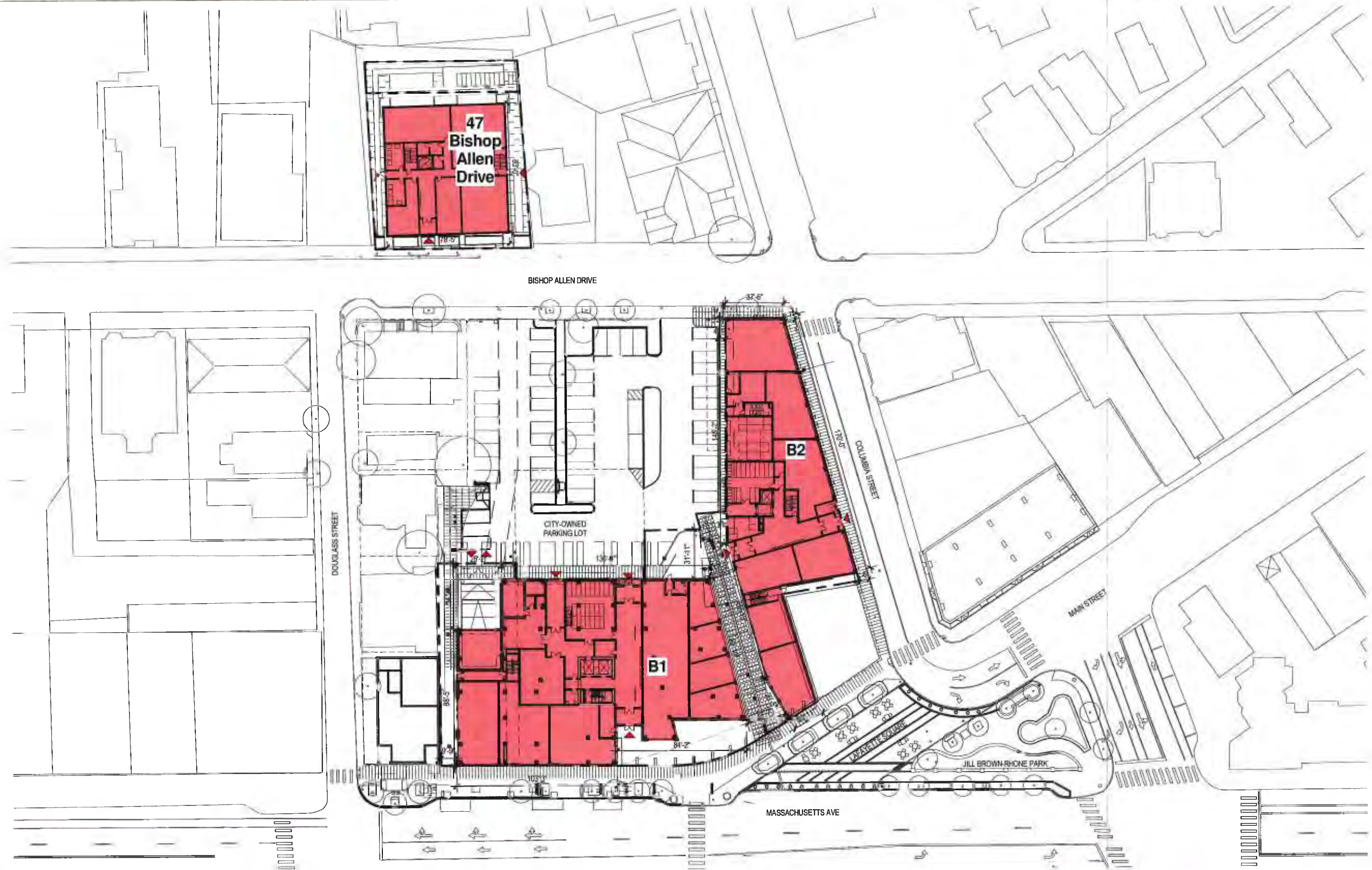


Lafayette Square and Columbia Street



Figure 1.5
Existing Conditions Photos

Mass+Main
Cambridge, Massachusetts



Prepared By: CBT Architects

Figure 1.6b
 Proposed Development Plan
 Mass+Main and 47 Bishop Allen Drive

Mass+Main
Cambridge, Massachusetts



0 10 20 40



Prepared By: CBT Architects

Figure 1.3
Existing Site Survey

Mass+Main
Cambridge, Massachusetts



Intersection of Columbia Street and Bishop Allen Drive



Project Site frontage along Massachusetts Avenue



Lafayette Square along Massachusetts Avenue

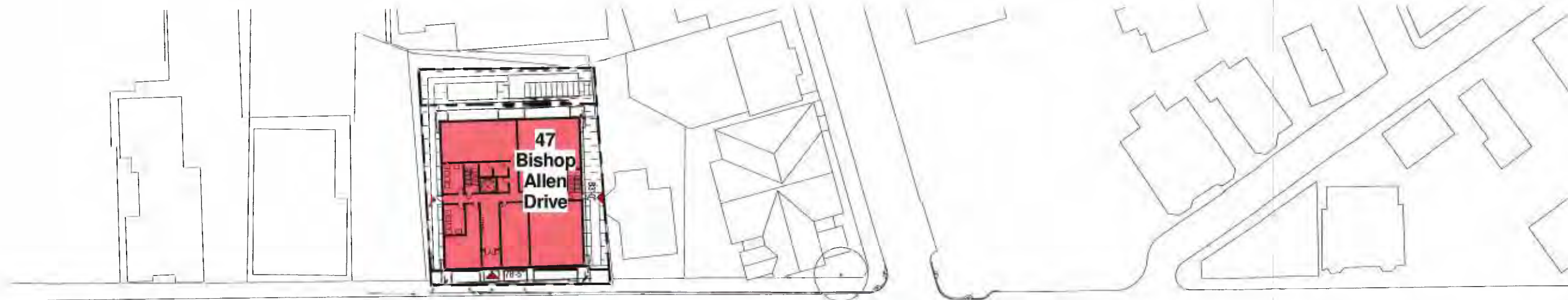


Lafayette Square and Columbia Street



Figure 1.5
Existing Conditions Photos

Mass+Main
Cambridge, Massachusetts



Prepared By: CBT Architects

Figure 1.6b
Proposed Development Plan
Mass+Main and 47 Bishop Allen Drive

Mass+Main
Cambridge, Massachusetts



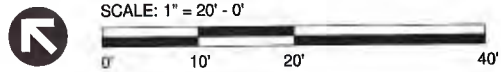
Prepared By: CBT Architects

Figure 1.8a
Building B-1 Ground Floor Plan

Mass+Main
Cambridge, Massachusetts



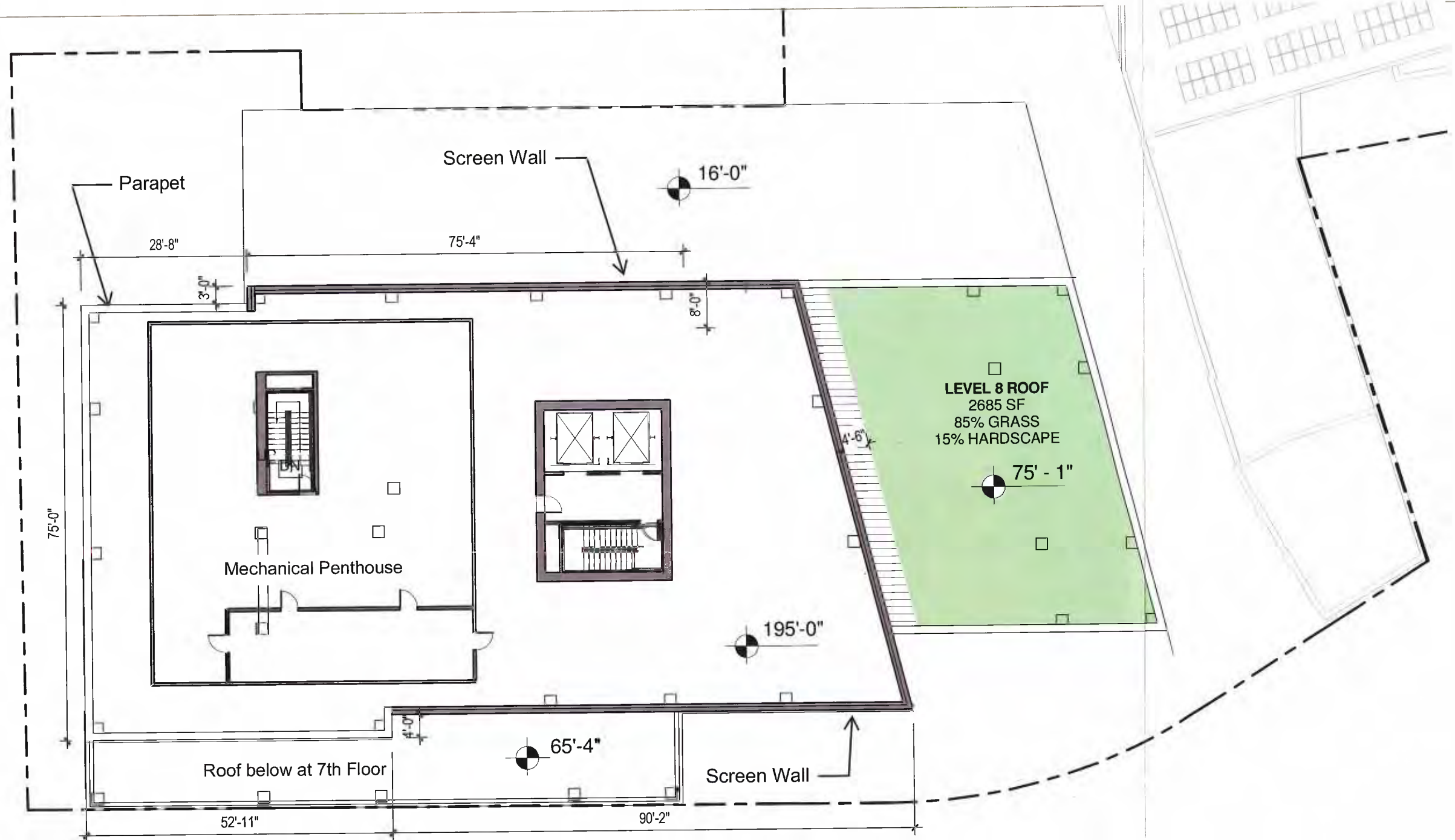
- BOH
- LOBBY/CIRC.
- RESIDENTIAL



Prepared By: CBT Architects

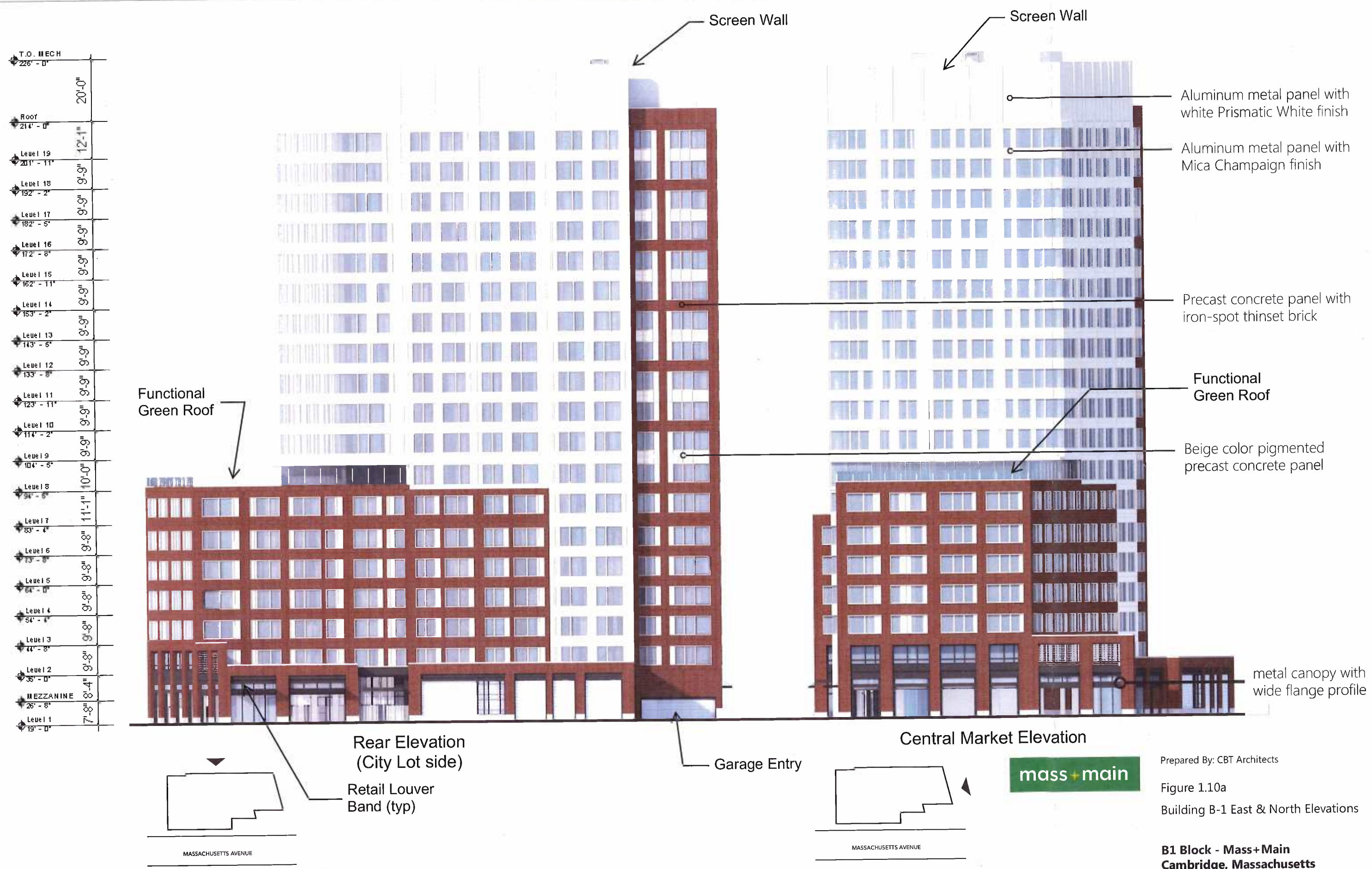
Figure 1.8d
Building B-1 Typical Tower Floor Plan

Mass+Main
Cambridge, Massachusetts



Prepared By: CBT Architects
 Figure 1.8e
 Building B-1 Roof Plan

**B1 Block - Mass+Main
 Cambridge, Massachusetts**



T.O. MECH	226' - 0"	
Roof	214' - 0"	20'-0"
Level 19	201' - 11"	12'-1"
Level 18	192' - 2"	9'-9"
Level 17	182' - 5"	9'-9"
Level 16	172' - 8"	9'-9"
Level 15	162' - 11"	9'-9"
Level 14	153' - 2"	9'-9"
Level 13	143' - 5"	9'-9"
Level 12	133' - 8"	9'-9"
Level 11	123' - 11"	9'-9"
Level 10	114' - 2"	9'-9"
Level 9	104' - 5"	9'-9"
Level 8	94' - 8"	10'-0"
Level 7	83' - 4"	11'-1"
Level 6	73' - 8"	9'-8"
Level 5	64' - 0"	9'-8"
Level 4	54' - 4"	9'-8"
Level 3	44' - 8"	9'-8"
Level 2	35' - 0"	9'-8"
MEZZANINE	26' - 8"	8'-4"
Level 1	19' - 0"	7'-8"

- Aluminum metal panel with white Prismatic White finish
- Aluminum metal panel with Mica Champaign finish
- Precast concrete panel with iron-spot thinset brick
- Functional Green Roof
- Beige color pigmented precast concrete panel

Functional Green Roof

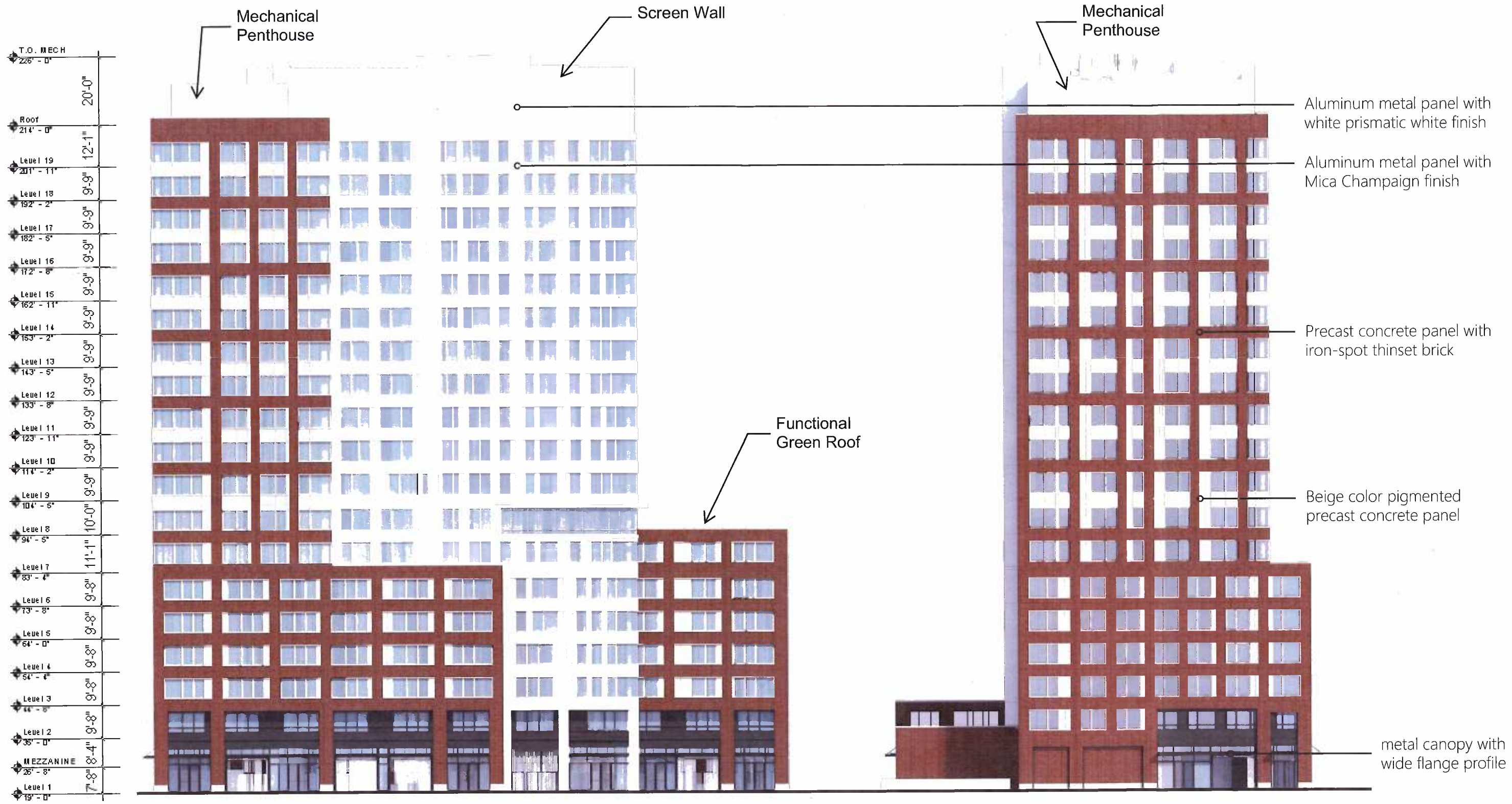


Prepared By: CBT Architects

Figure 1.10a

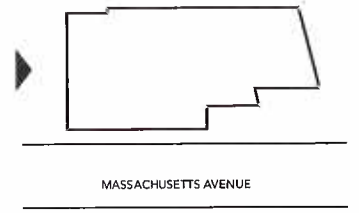
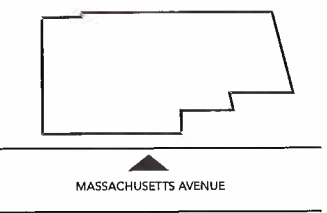
Building B-1 East & North Elevations

**B1 Block - Mass+Main
Cambridge, Massachusetts**



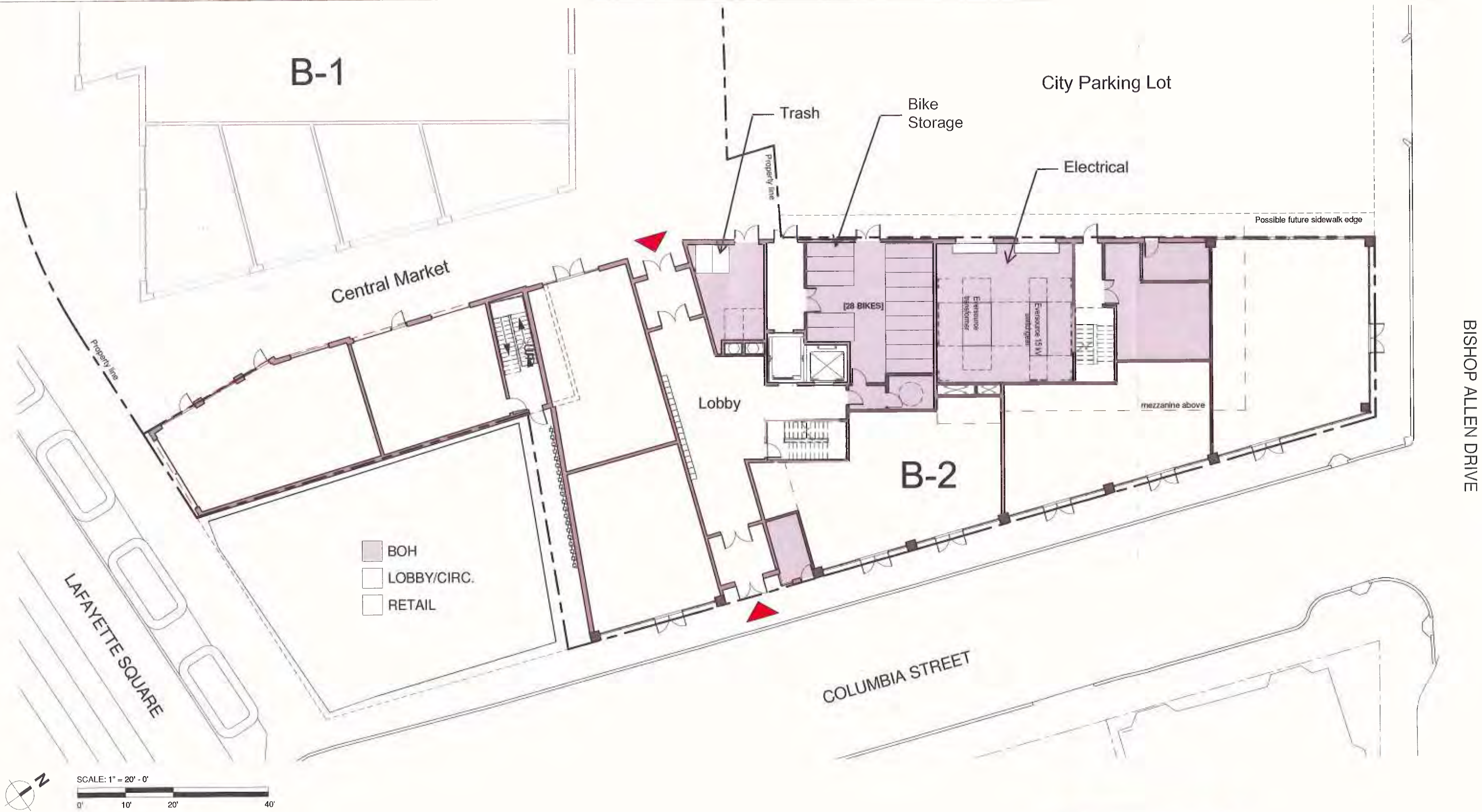
Mass Ave Elevation

Coolidge Place Elevation



Prepared By: CBT Architects
 Figure 1.10b
 Building B-1 West & South Elevations

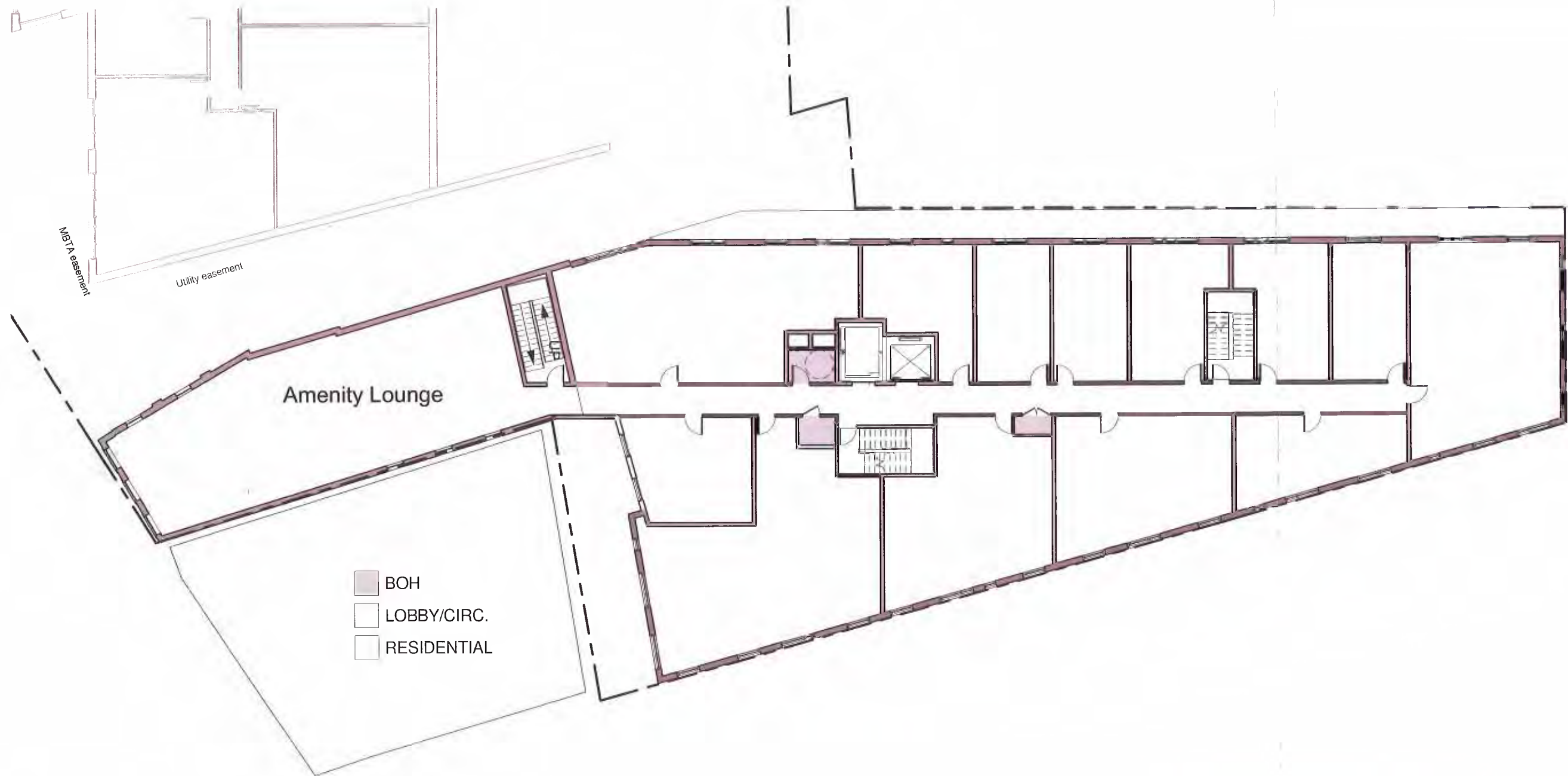
**B1 Block - Mass+Main
 Cambridge, Massachusetts**



Prepared By: CBT Architects

Figure 1.11a
Building B-2 Level 1 Plan

Mass+Main
Cambridge, Massachusetts

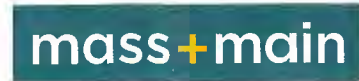


Amenity Lounge

- BOH
- LOBBY/CIRC.
- RESIDENTIAL

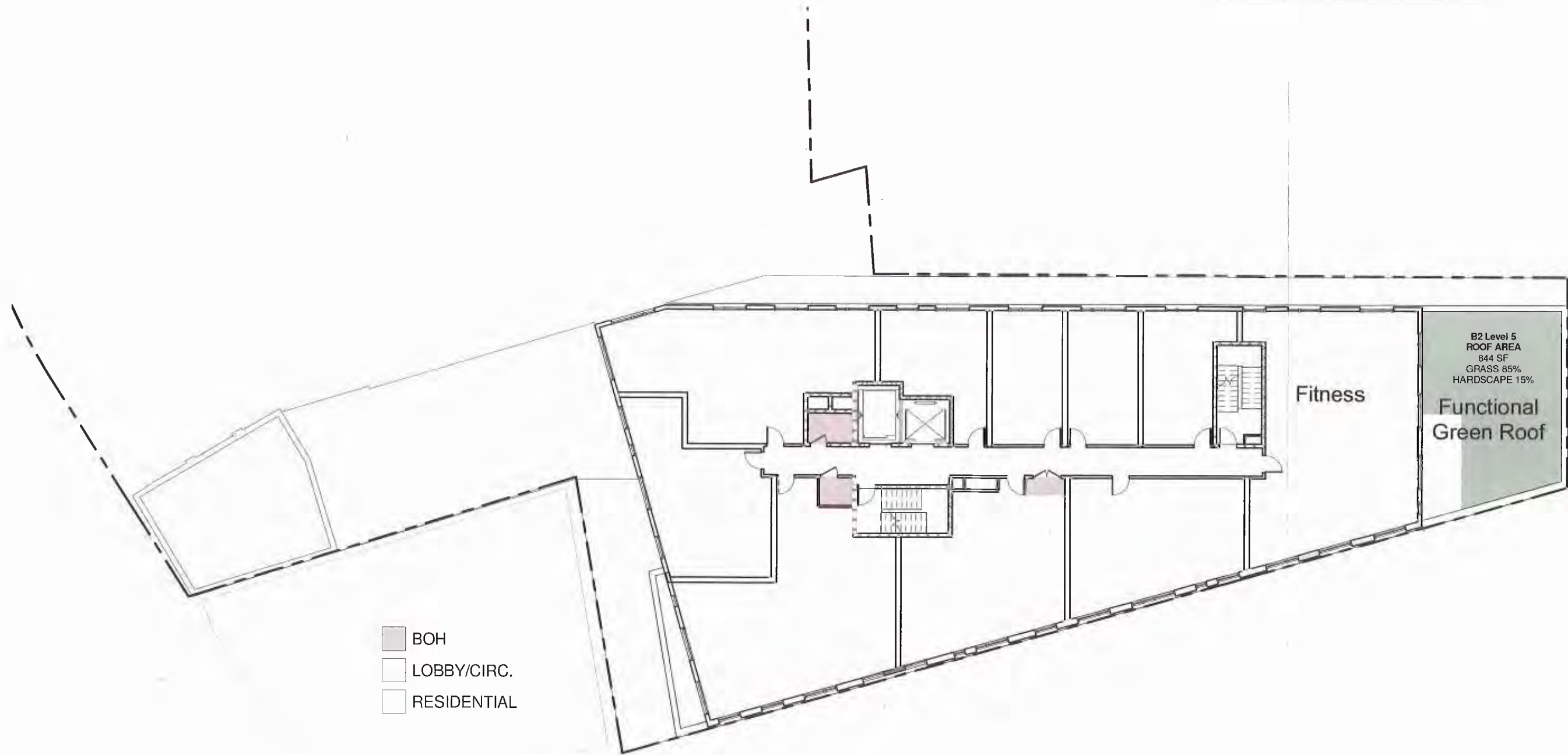


SCALE: 1" = 20' - 0"
0' 10' 20' 40'



Prepared By: CBT Architects
Figure 1.11b
Building B-2 Level 2 Plan

Mass+Main
Cambridge, Massachusetts



- BOH
- LOBBY/CIRC.
- RESIDENTIAL

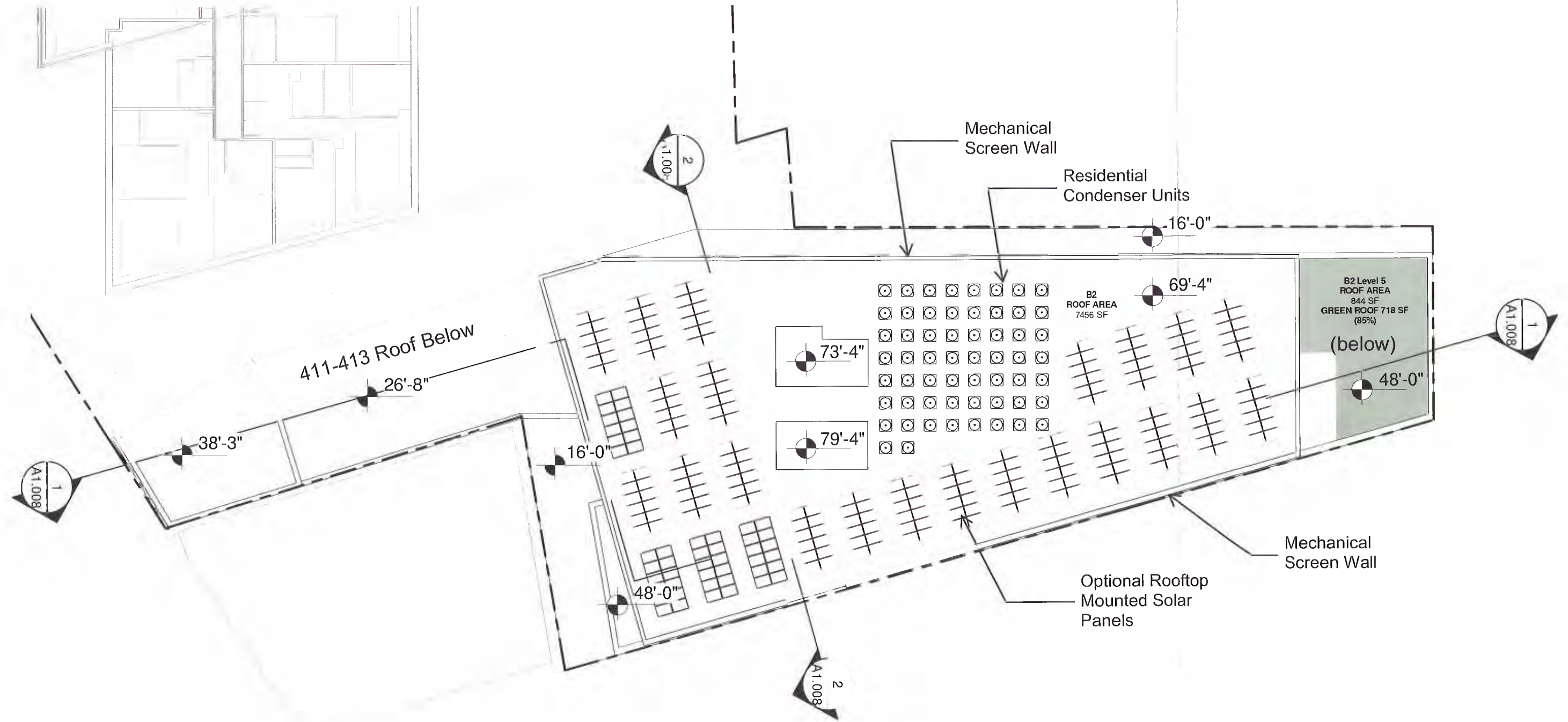


SCALE: 1" = 20' - 0"
0' 10' 20' 40'



Prepared By: CBT Architects
Figure 1.11c
Building B-2 Level 5 Plan

Mass+Main
Cambridge, Massachusetts



SCALE: 1" = 20' - 0"

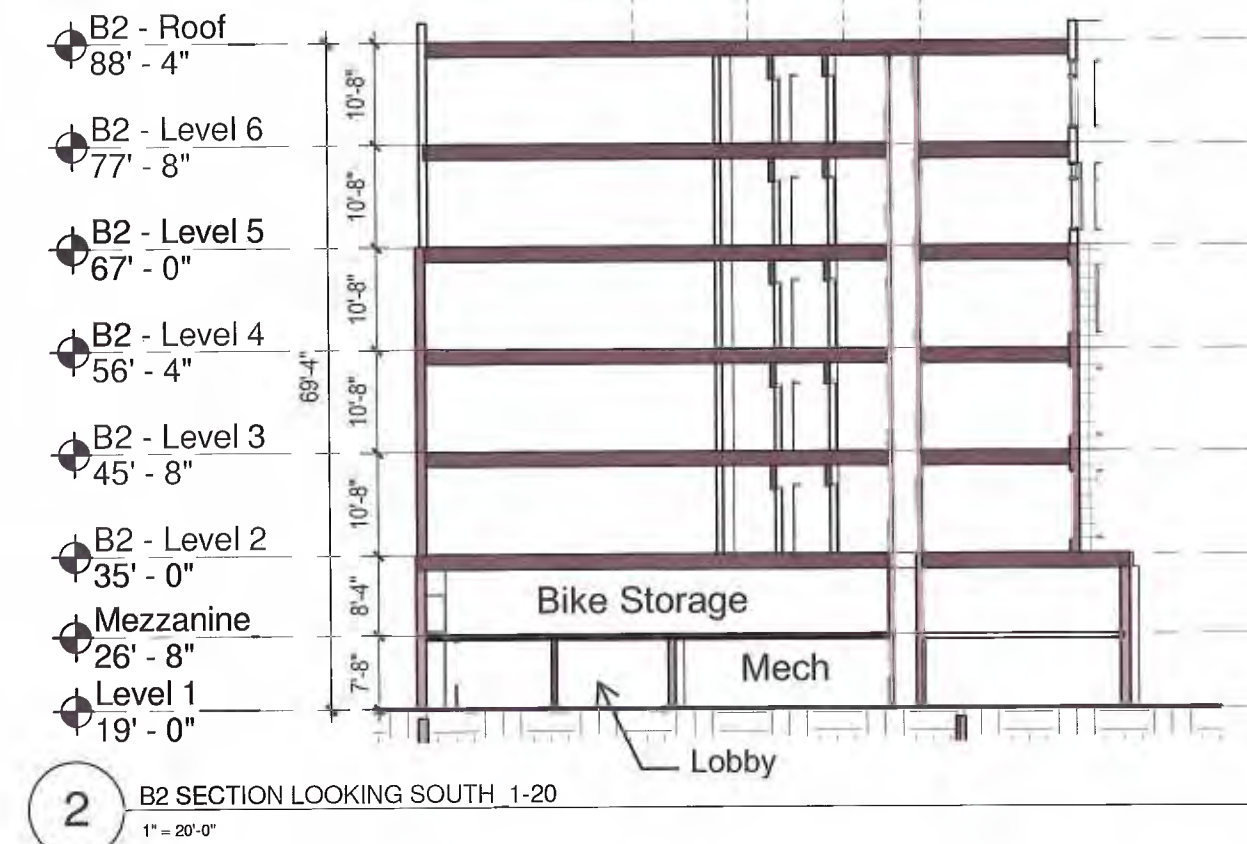
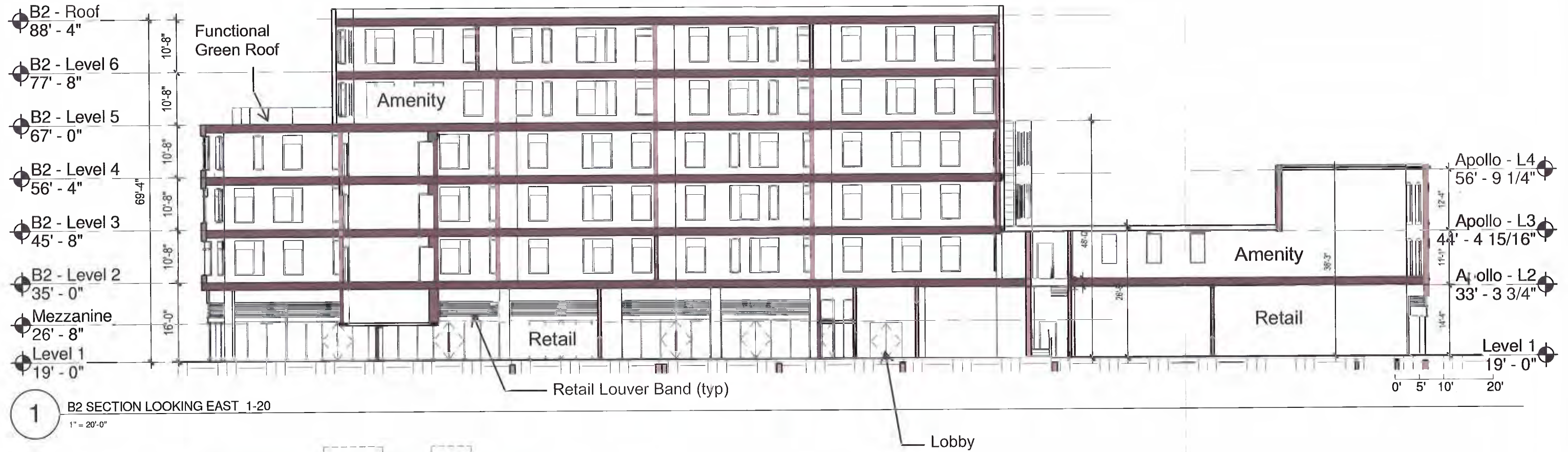


Prepared By: CBT Architects

Figure 1.11d

Building B-2 Roof Plan

Mass+Main
Cambridge, Massachusetts

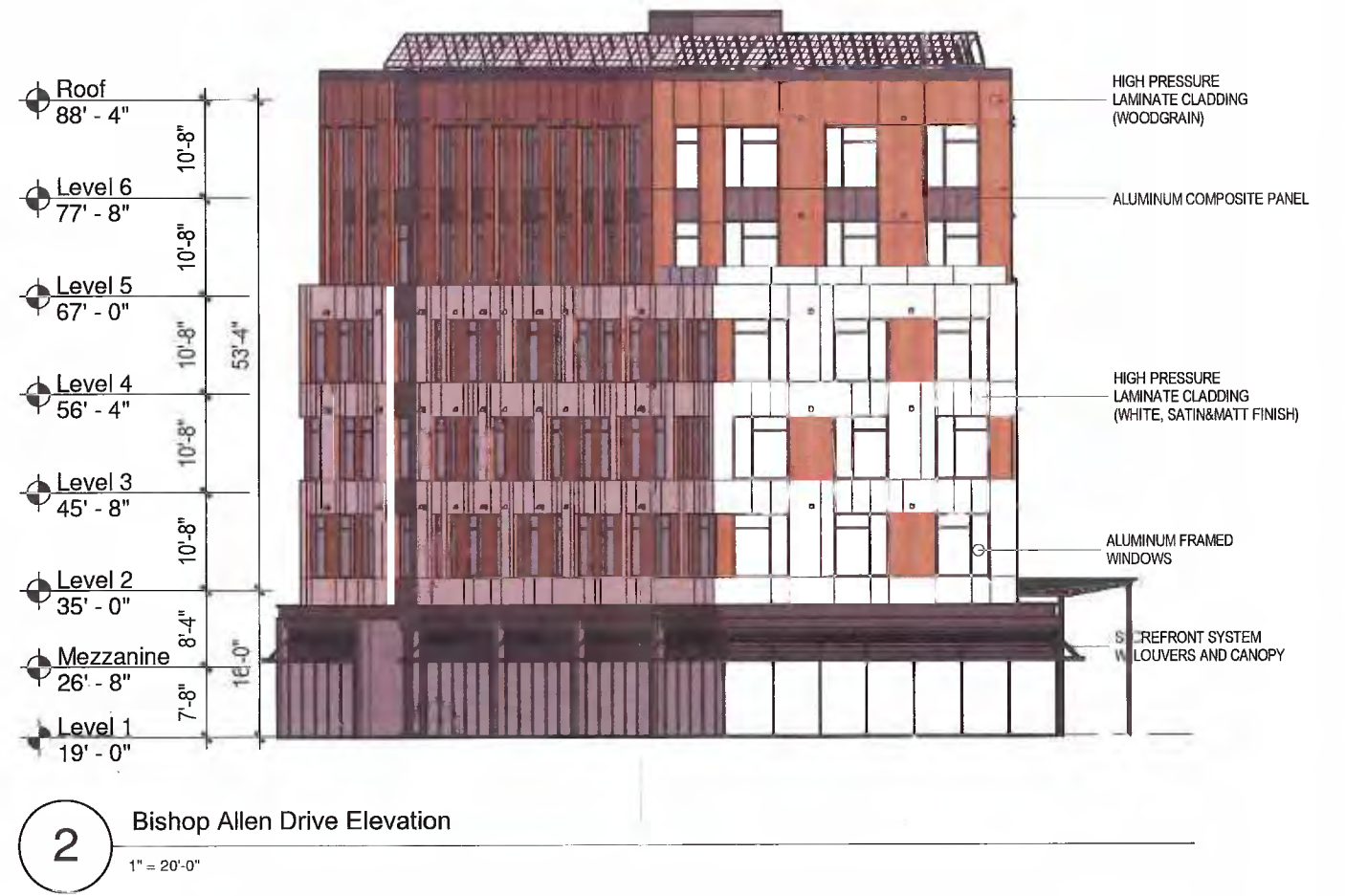


Prepared By: CBT Architects

Figure 1.12

Building B-2 Building Sections

Mass+Main
Cambridge, Massachusetts



Prepared By: CBT Architects

Figure 1.13a
Building B-2 Elevations

Mass+Main
Cambridge, Massachusetts



3 Columbia Street Elevation
1" = 20'-0"



Prepared By: CBT Architects

Figure 1.13b

Building B-2 Elevation

Mass+Main
Cambridge, Massachusetts



mass+main

Prepared By: CBT Architects

Figure 1.14b

Perspective Rendering
Bird's Eye View Looking North

Mass+Main
Cambridge, Massachusetts



mass + main

Prepared By: CBT Architects

Figure 1.14d

Perspective Rendering
Across Mass Ave Looking East

Mass+Main
Cambridge, Massachusetts



mass+main

Prepared By: CBT Architects

Figure 1.14e

Perspective Rendering
Across Columbia Street Looking West

Mass+Main
Cambridge, Massachusetts



mass + main

Prepared By: CBT Architects

Figure 1.14f

Perspective Rendering
Bird's Eye View Looking Southwest

Mass+Main
Cambridge, Massachusetts



Source Info: Landworks Studio Inc.



Central Market and Setback (fig 1.15)

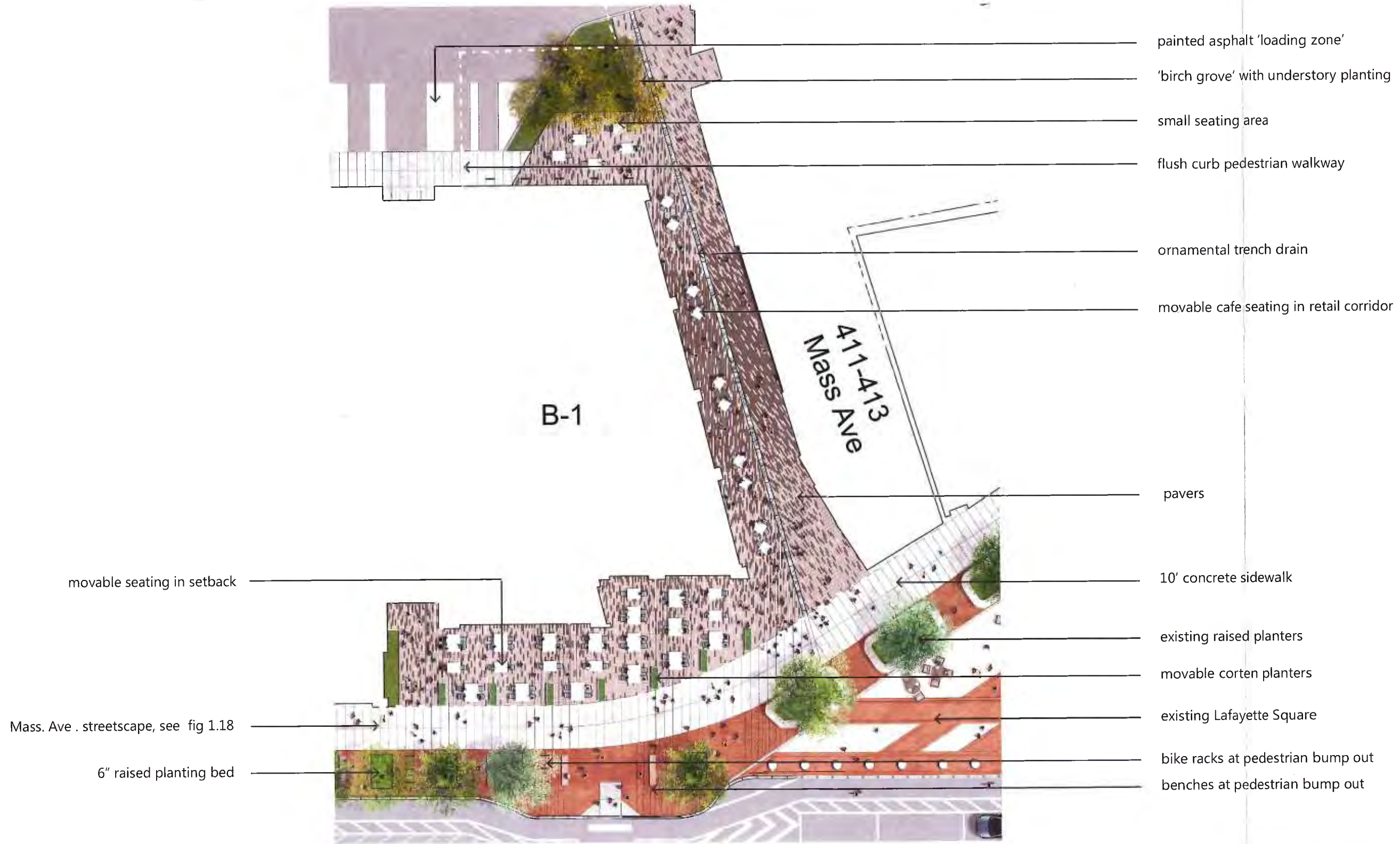
Massachusetts Avenue Streetscape (fig 1.18)

New Coolidge Place (fig 1.21)



Figure 1.15
Proposed Site Improvement Plan
-Key Plan

Mass+Main
Cambridge, Massachusetts



Source Info: Landworks Studio Inc.



Figure 1.16
Central Market Plan

Mass+Main
Cambridge, Massachusetts



Prepared By: CBT Architects

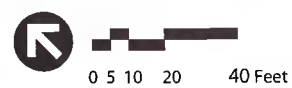
Figure 1.14f

Perspective Rendering
Bird's Eye View Looking Southwest

Mass+Main
Cambridge, Massachusetts



Source Info: Landworks Studio Inc.



Central Market and Setback (fig 1.15)

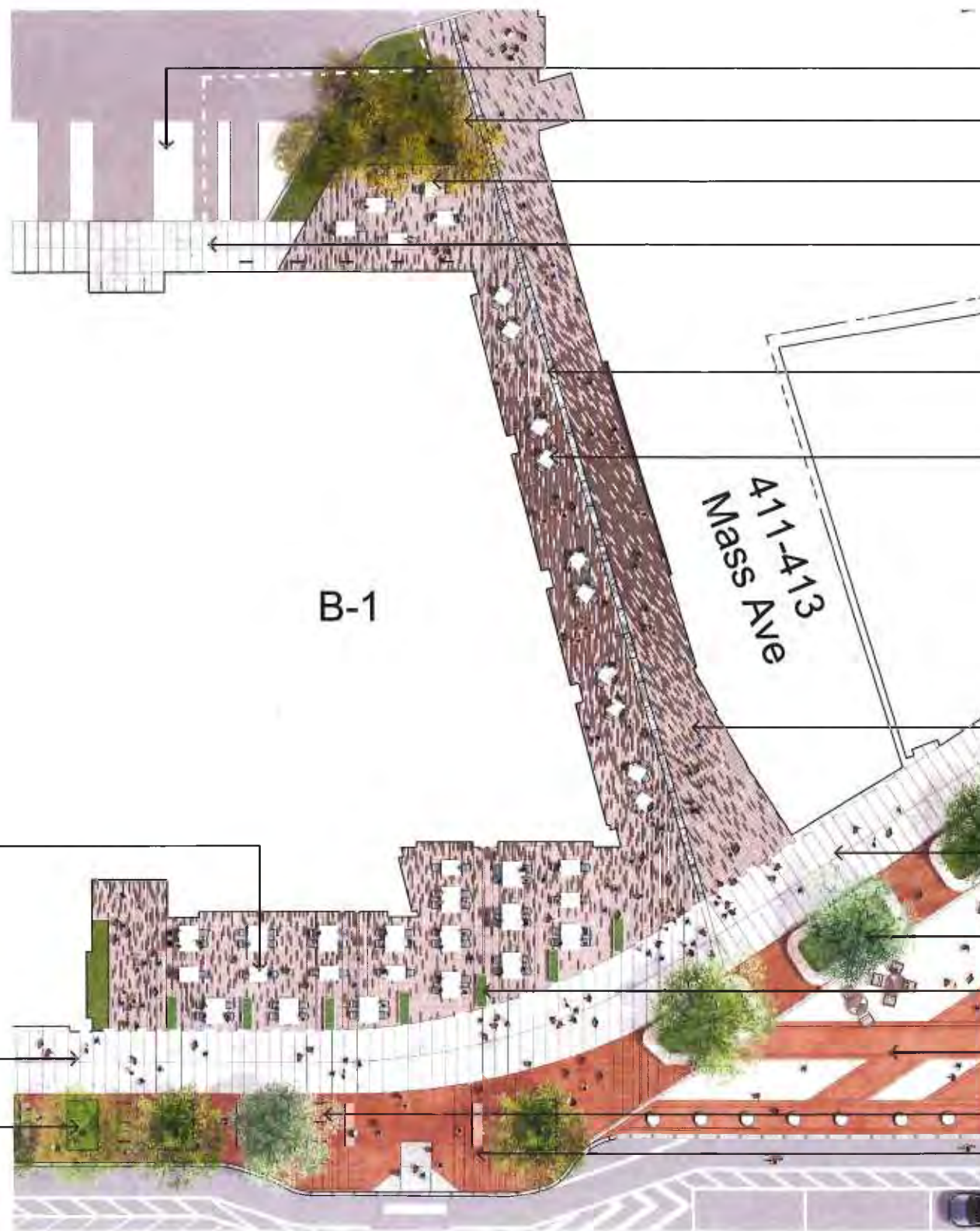
Massachusetts Avenue Streetscape (fig 1.18)

New Coolidge Place (fig 1.21)



Figure 1.15
Proposed Site Improvement Plan
-Key Plan

Mass+Main
Cambridge, Massachusetts



Source Info: Landworks Studio Inc.

- painted asphalt 'loading zone'
- 'birch grove' with understory planting
- small seating area
- flush curb pedestrian walkway
- ornamental trench drain
- movable cafe seating in retail corridor
- pavers
- 10' concrete sidewalk
- existing raised planters
- movable corten planters
- existing Lafayette Square
- bike racks at pedestrian bump out
- benches at pedestrian bump out

→ movable seating in setback

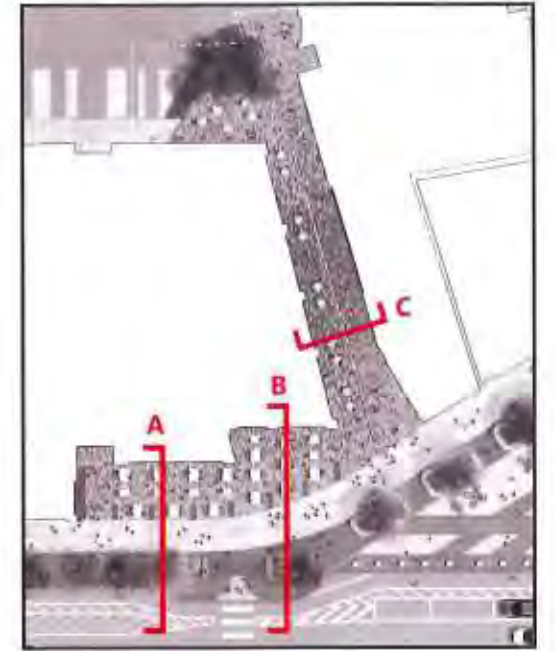
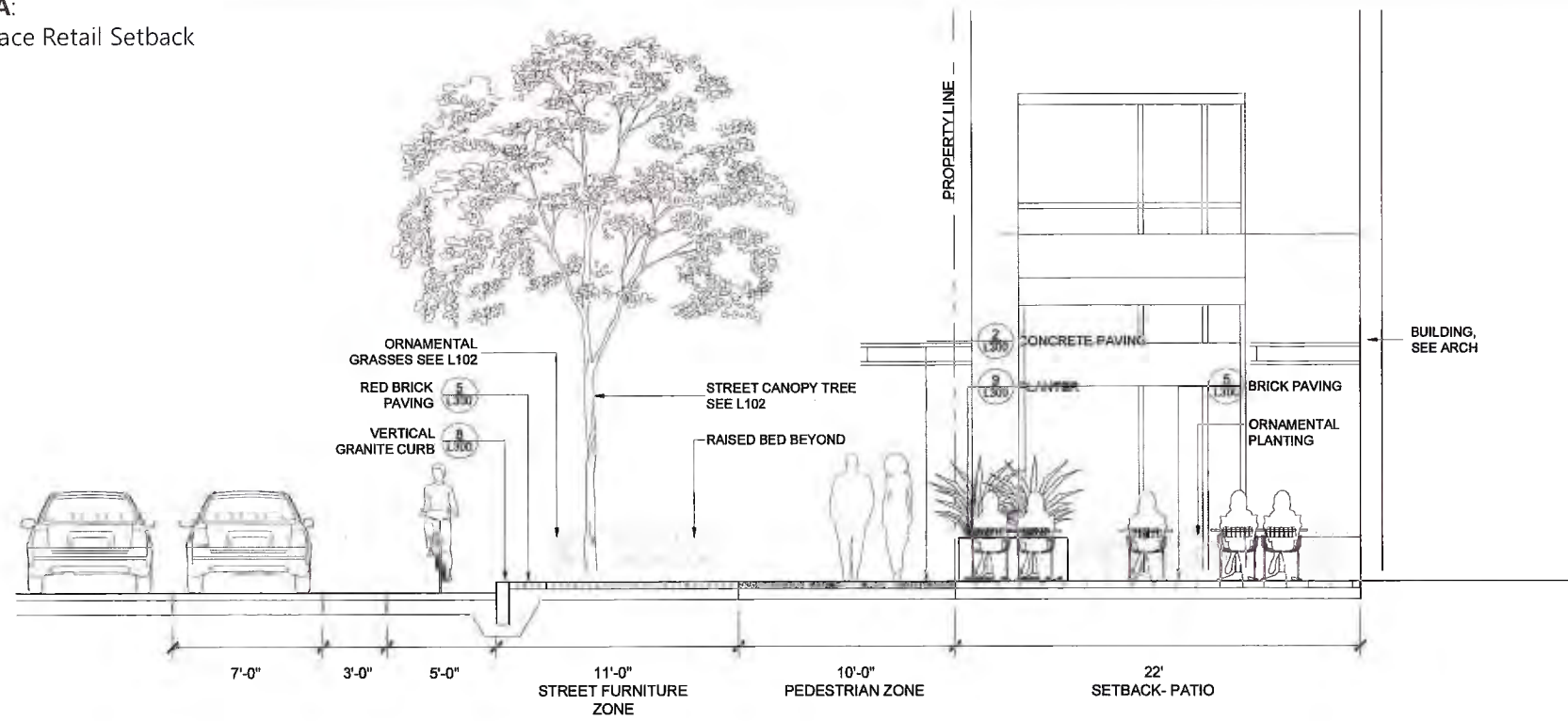
→ Mass. Ave . streetscape, see fig 1.18

→ 6" raised planting bed

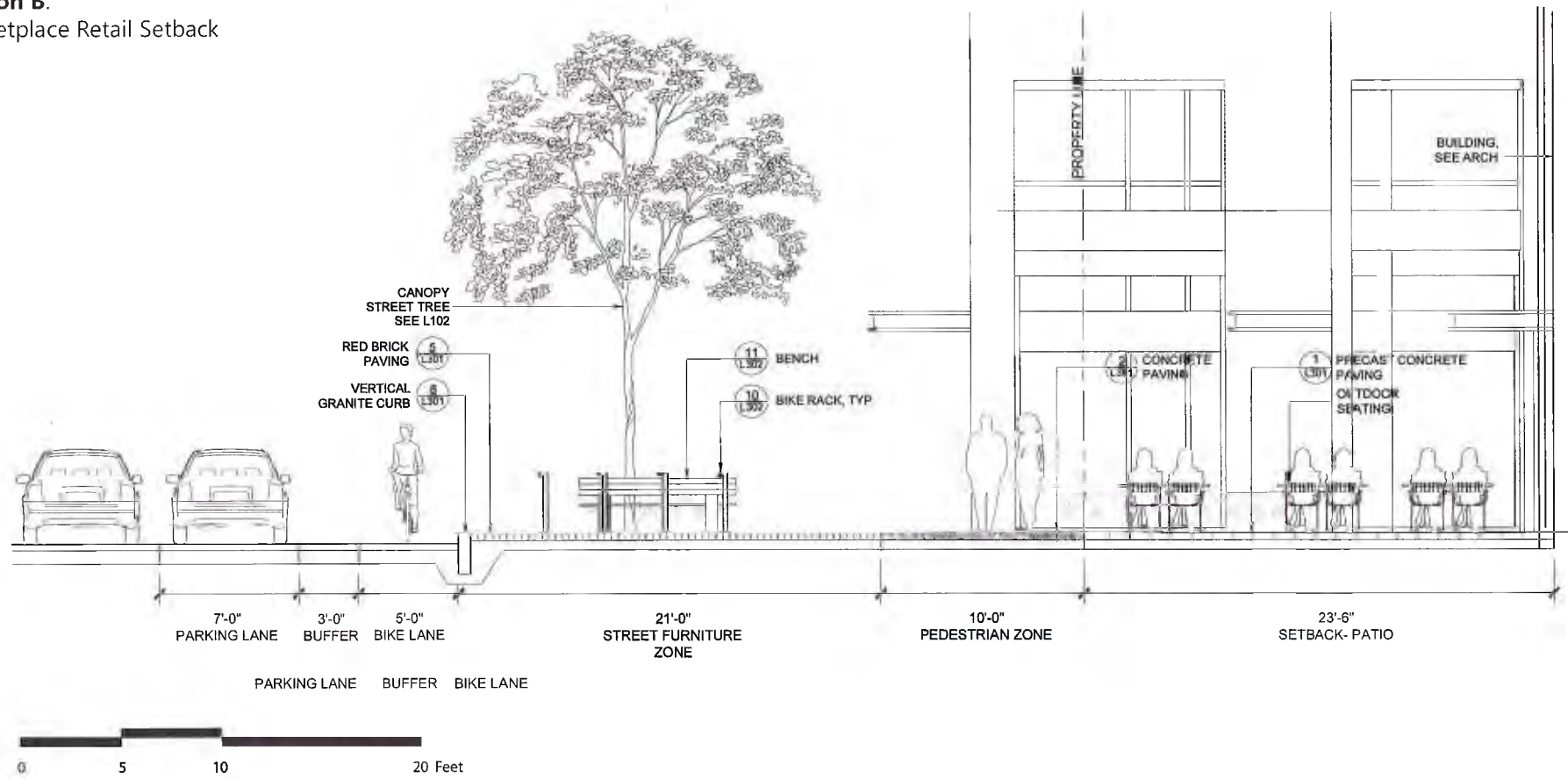


Figure 1.16
Central Market Plan

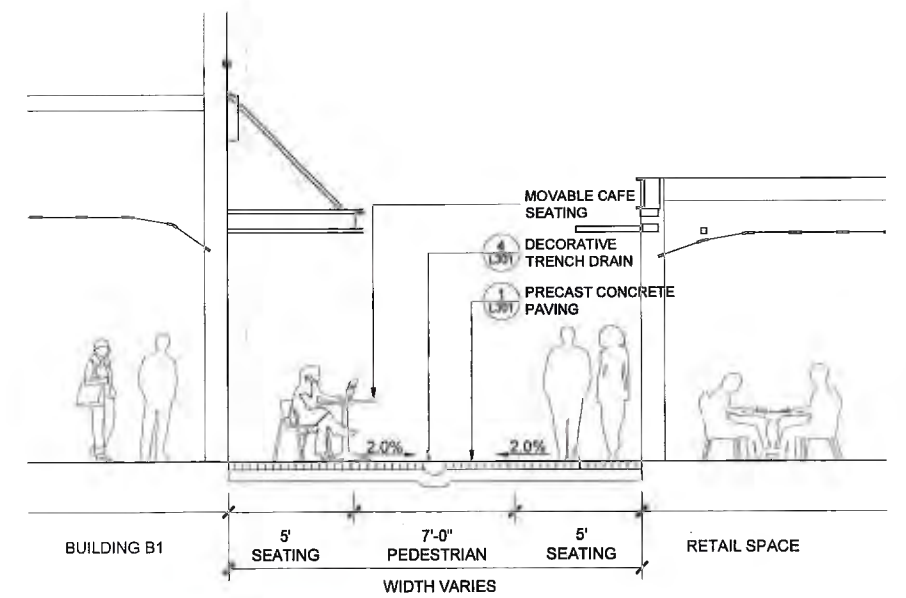
Section A:
Marketplace Retail Setback



Section B:
Marketplace Retail Setback



Section C:
Central Market



Source Info: Landworks Studio Inc.



Figure 1.17
Central Market Sections

Mass+Main
Cambridge, Massachusetts



mass+main

Prepared By: CBT Architects

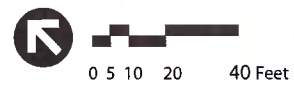
Figure 1.14f

Perspective Rendering
Bird's Eye View Looking Southwest

Mass+Main
Cambridge, Massachusetts



Source Info: Landworks Studio Inc.



Central Market and Setback (fig 1.15)

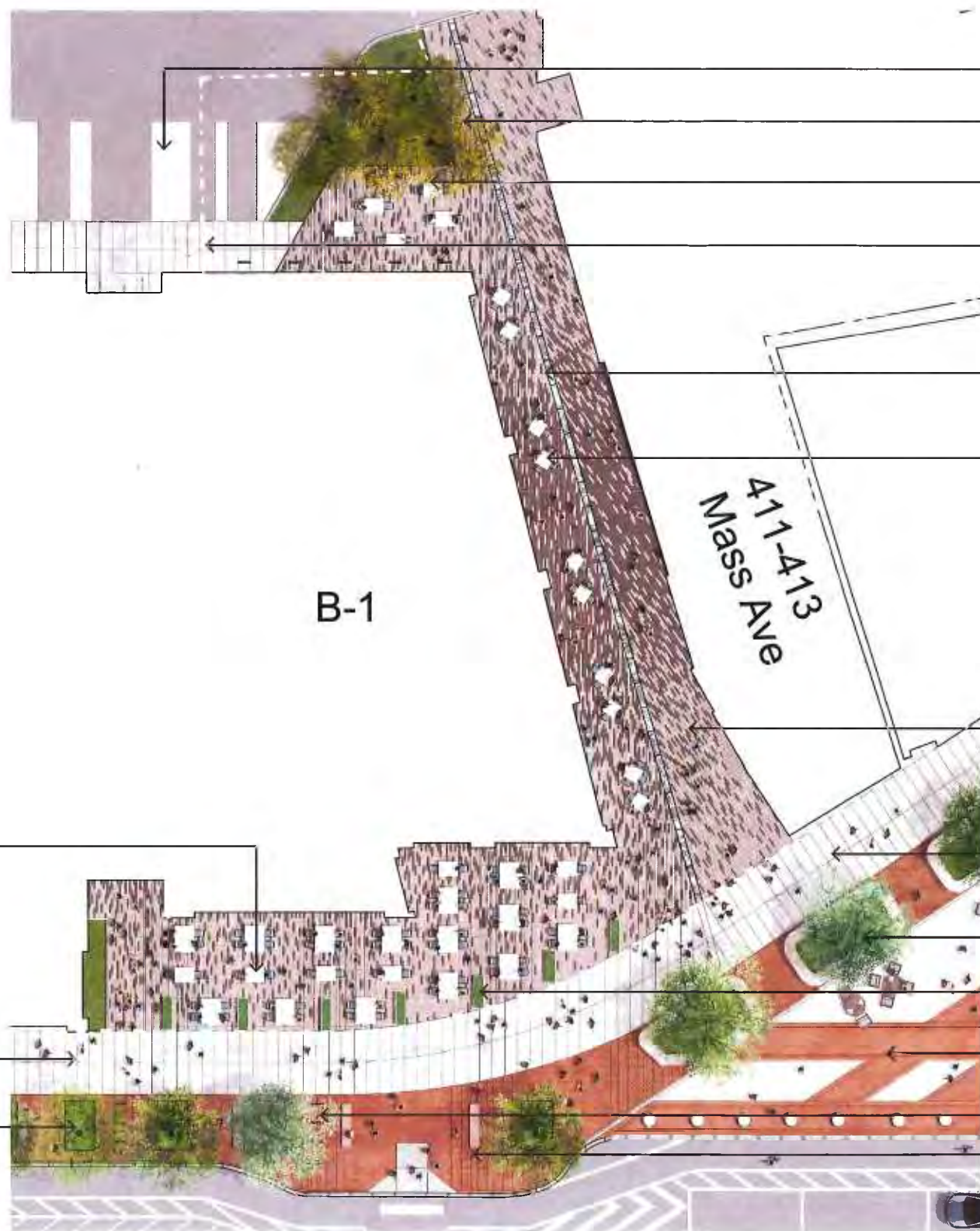
Massachusetts Avenue Streetscape (fig 1.18)

New Coolidge Place (fig 1.21)



Figure 1.15
Proposed Site Improvement Plan
-Key Plan

Mass+Main
Cambridge, Massachusetts



Source Info: Landworks Studio Inc.

- painted asphalt 'loading zone'
- 'birch grove' with understory planting
- small seating area
- flush curb pedestrian walkway
- ornamental trench drain
- movable cafe seating in retail corridor
- pavers
- 10' concrete sidewalk
- existing raised planters
- movable corten planters
- existing Lafayette Square
- bike racks at pedestrian bump out
- benches at pedestrian bump out

movable seating in setback

Mass. Ave . streetscape, see fig 1.18

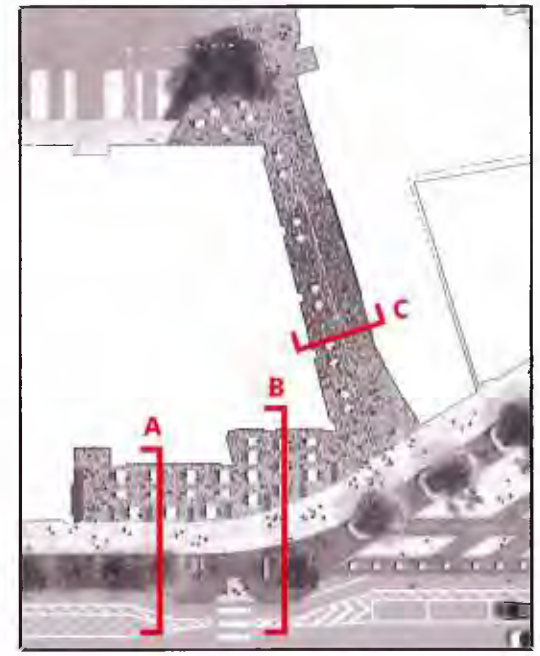
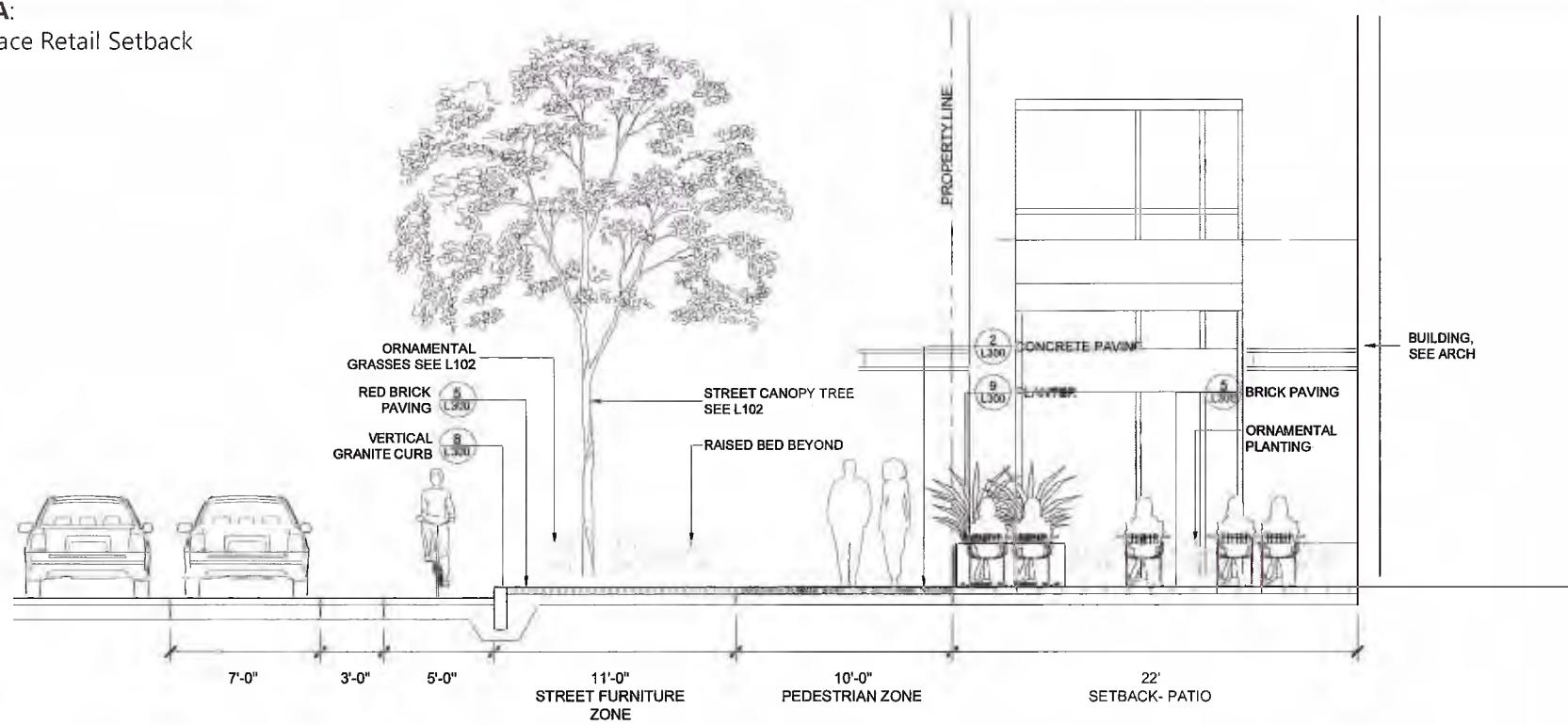
6" raised planting bed



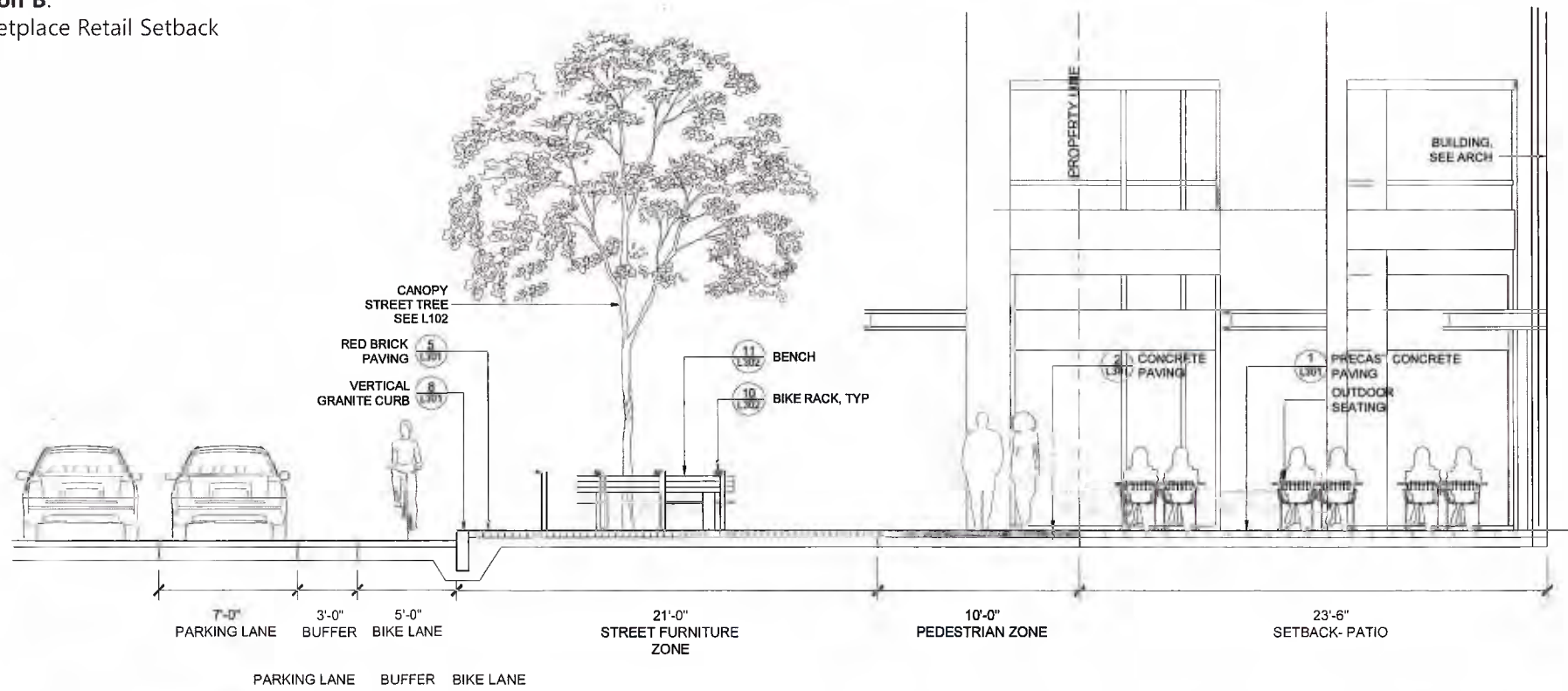
Figure 1.16
Central Market Plan

Mass+Main
Cambridge, Massachusetts

Section A:
Marketplace Retail Setback



Section B:
Marketplace Retail Setback



Source Info: Landworks Studio Inc.

Section C:
Central Market

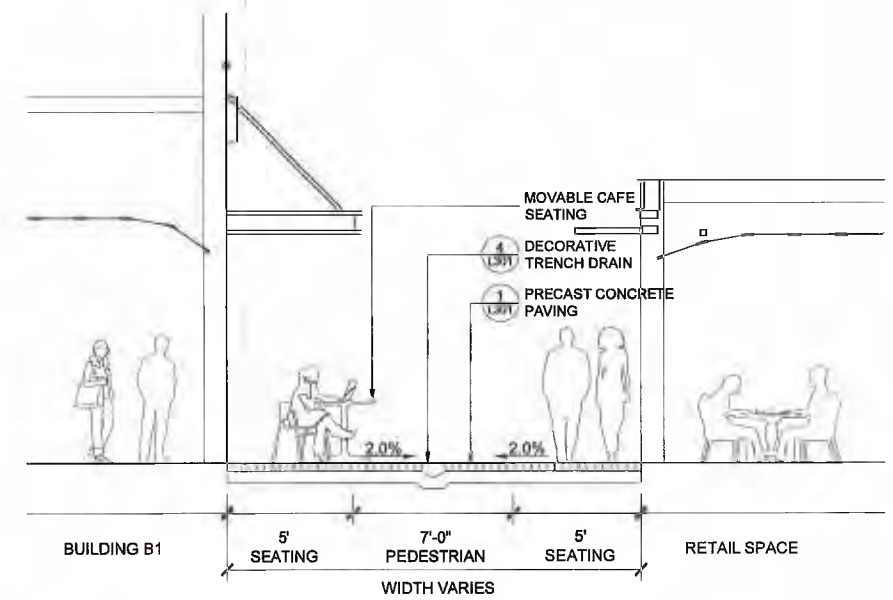


Figure 1.17
Central Market Sections

Mass+Main
Cambridge, Massachusetts



Source Info: Landworks Studio Inc.

mass + main

Figure 1.18b
Perspective Rendering
Setback Open Space Patio

Mass+Main
Cambridge, Massachusetts



Prepared By: CBT Architects

Figure 1.18a

Central Market Perspective Rendering

Mass+Main
Cambridge, Massachusetts



Source Info: Landworks Studio Inc.

mass + main

Figure 1.18c
Perspective Rendering
Setback Open Space Event

Mass+Main
Cambridge, Massachusetts



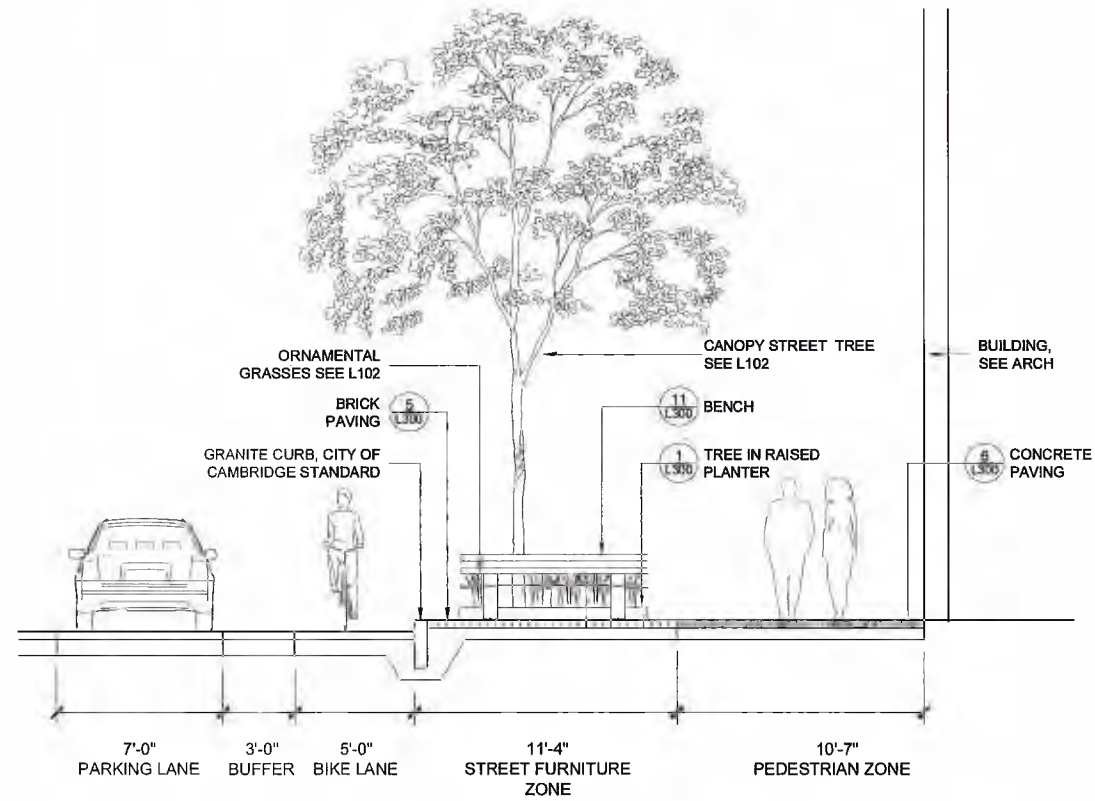
Source Info: Landworks Studio Inc.



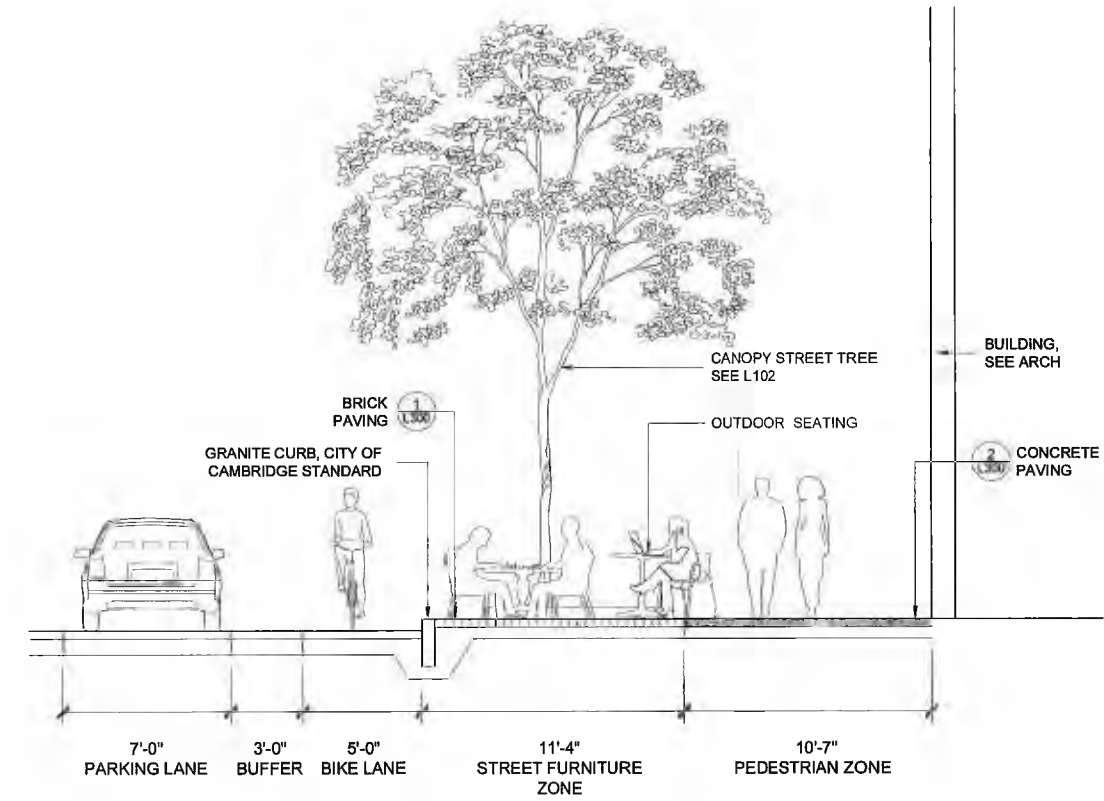
Figure 1.19
Mass Ave Streetscape
Site Improvement Plan

Mass+Main
Cambridge, Massachusetts

Section A:
Mass. Ave. streetscape section with fixed benches



Section B:
Mass. Ave. streetscape section with movable cafe seating



Source Info: Landworks Studio Inc.

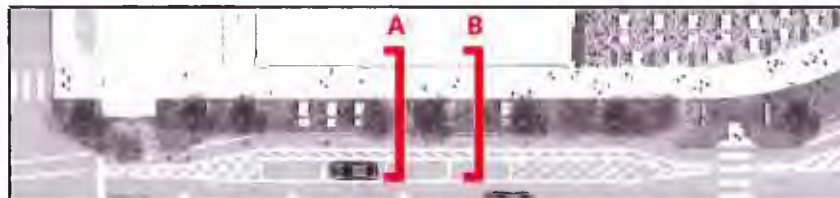


Figure 1.20
Mass Ave Streetscape
Sections

Mass+Main
Cambridge, Massachusetts



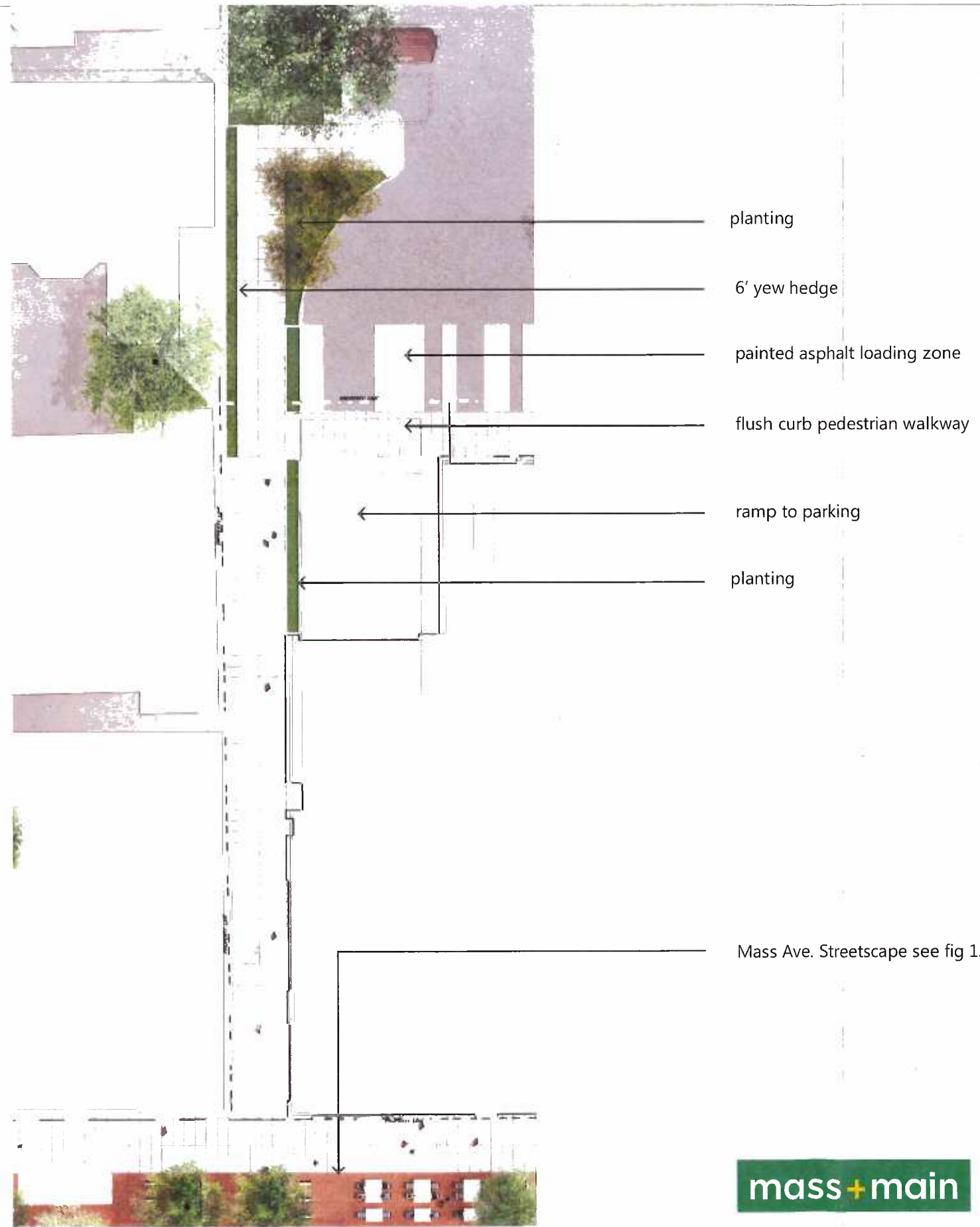
Source Info: Landworks Studio Inc.



mass + main

Figure 1.21
Perspective Rendering
Mass Ave Streetscape

Mass+Main
Cambridge, Massachusetts



Source Info: Landworks Studio Inc.



Figure 1.22
New Coolidge Place
Site Improvement Plan

Mass+Main
Cambridge, Massachusetts



Rasied corten beds



Movable corten planters



Rasied corten beds

Source Info: Landworks Studio Inc.



Multiplicity Bike Rack
By Landscape Forms

Source Info: Landworks Studio Inc.



Multiplicity Bench By Landscape Forms



Multiplicity Bike Rack
By Landscape Forms



Multiplicity Bench
By Landscape Forms

mass+main

Figure 1.23b
Site Finishes
Benches and Bike Racks

Mass+Main
Cambridge, Massachusetts



Source Info: Landworks Studio Inc.

mass+main

Figure 1.23c
Site Finishes
Ornamental Trench Drain

Mass+Main
Cambridge, Massachusetts

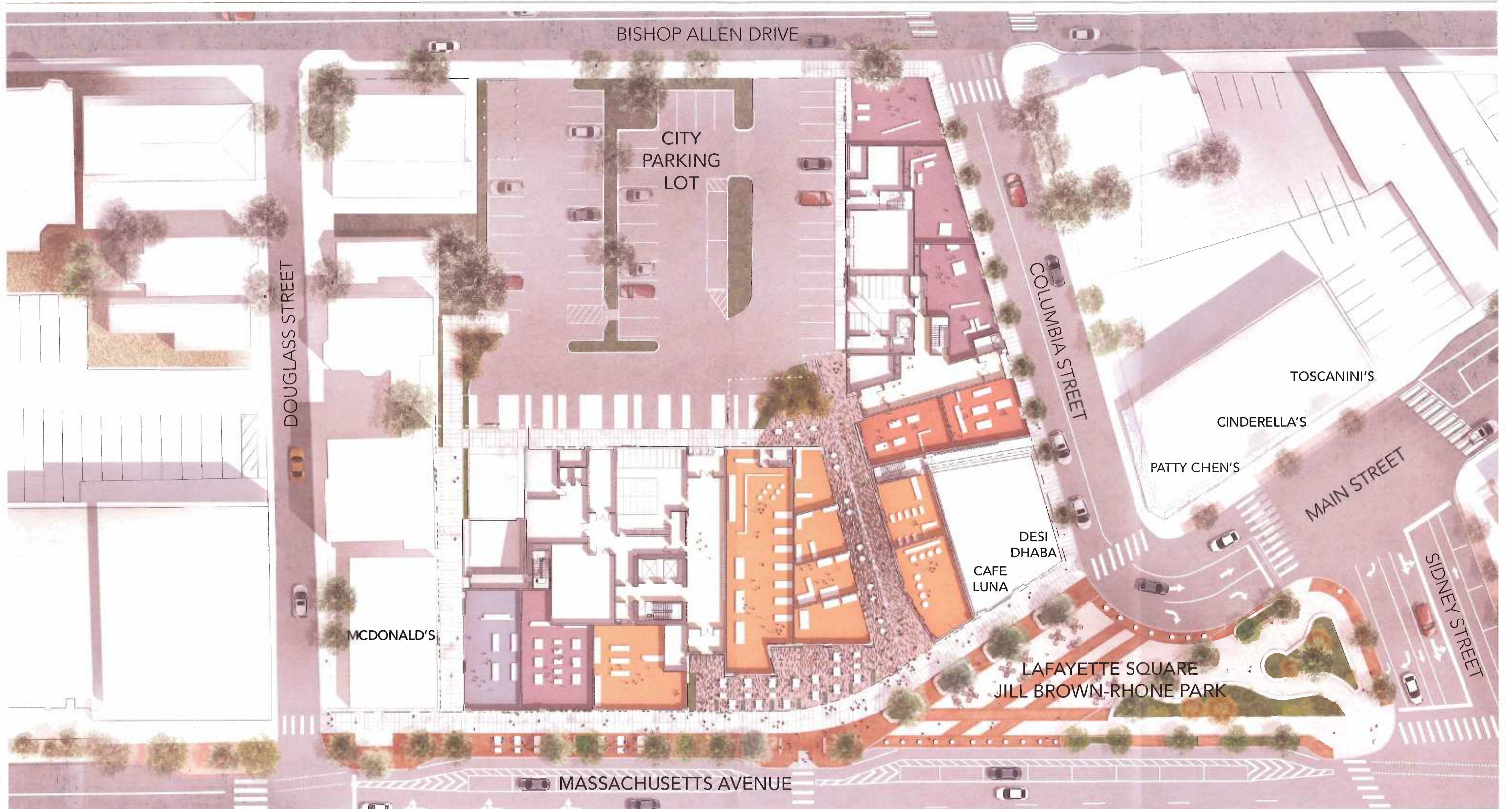


Source Info: Landworks Studio Inc.

mass + main

Figure 1.23d
Site Finishes
Paving

Mass+Main
Cambridge, Massachusetts



BISHOP ALLEN DRIVE

CITY
PARKING
LOT

DOUGLASS STREET

COLUMBIA STREET

TOSCANINI'S

CINDERELLA'S

PATTY CHEN'S

MAIN STREET

DESI
DHABA
CAFE
LUNA

SIDNEY STREET

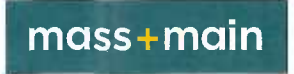
LAFAYETTE SQUARE
JILL BROWN-RHONE PARK

MCDONALD'S

MASSACHUSETTS AVENUE

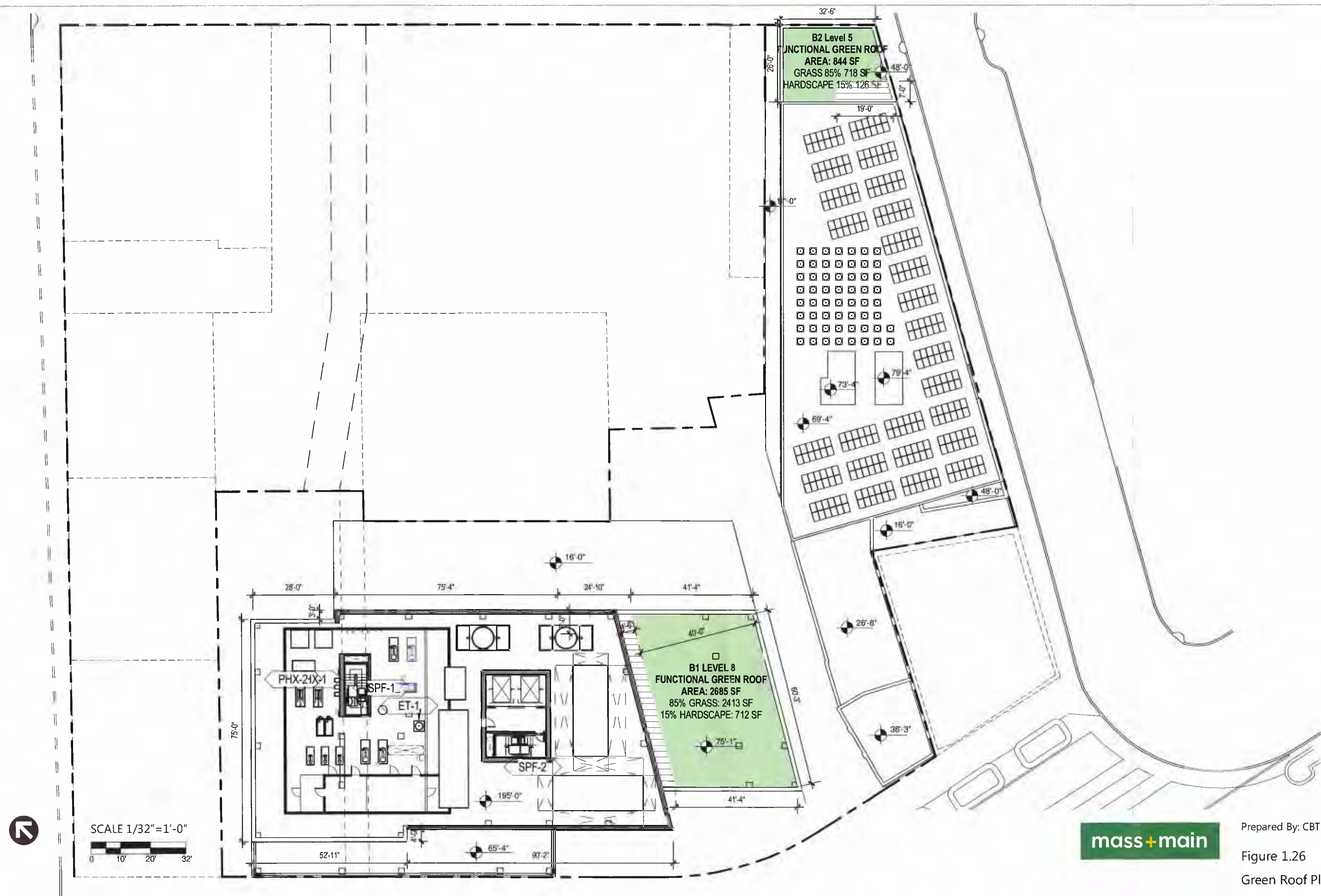


- SERVICE + RETAIL
- FAST-ORDER FOOD
- CASUAL DINING
- SMALL-FORMAT GOODS/FOOD



Prepared By: CBT Architects and GraffitoSP
 Figure 1.24
 Proposed Retail Plan

Mass+Main
 Cambridge, Massachusetts



mass+main

Prepared By: CBT Architects

Figure 1.26
Green Roof Plan

Mass+Main
Cambridge, Massachusetts