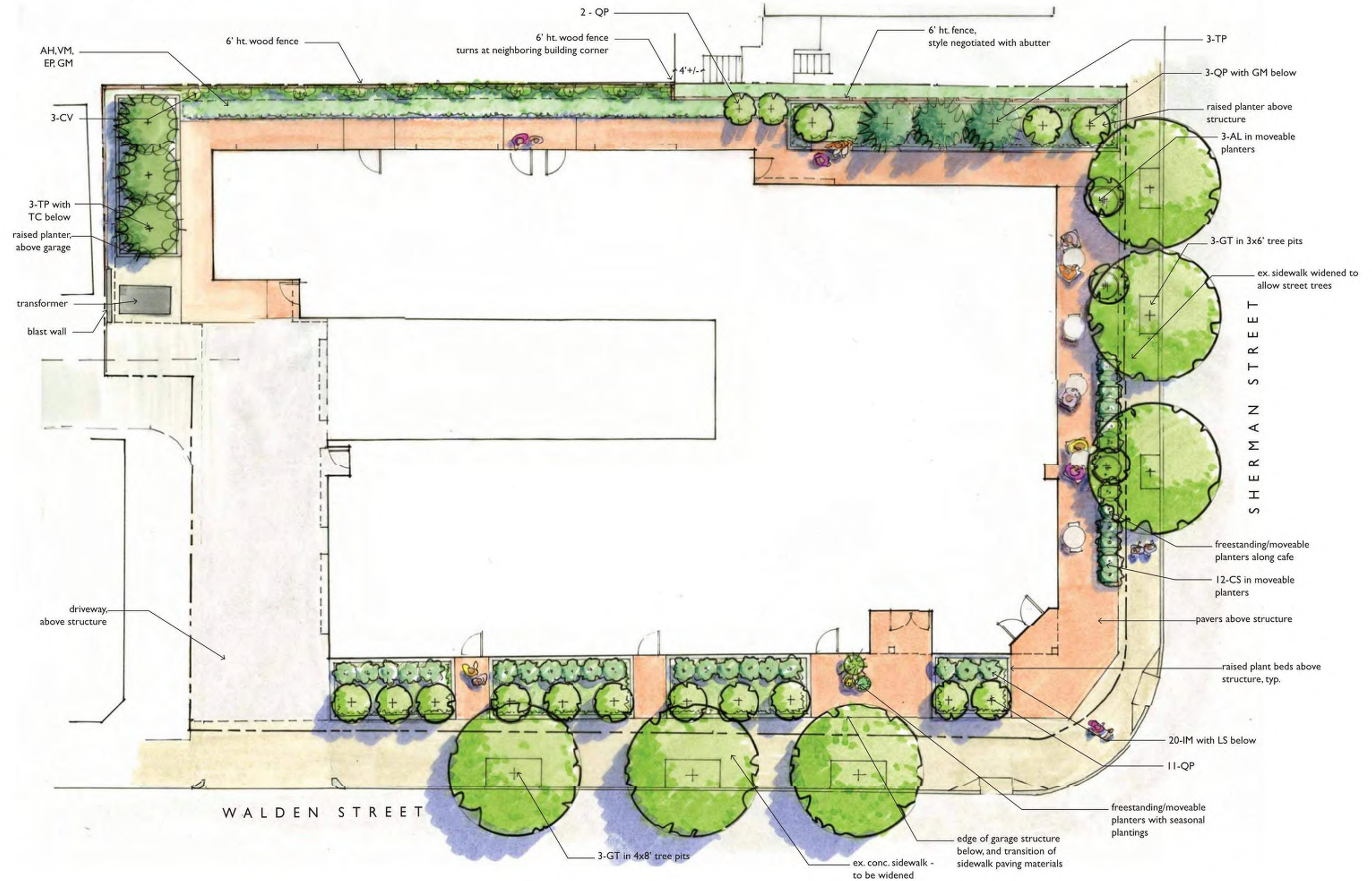


PLANT LIST					
KEY	QTY	LATIN NAME	COMMON NAME	SIZE	NOTES
DECIDUOUS TREES					
AL	3	Amelanchier leavis	Serviceberry	8-10' ht.	clump
GT	6	Gleditsia triacanthos	Honeylocust	2.5-3" cal.	B&B
LT	1	Liriodendron tulipifera	Tuliptree	3-3.5" cal.	B&B
QP	14	Quercus palustris 'Green Pillar'	Green Pillar Pin Oak	2.5-3" cal.	B&B
EVERGREEN TREES					
TP	6	Thuja plicata 'Green Giant'	'Green Giant' Arborvitae	8-10' ht.	B&B
SHRUBS					
CS	12	Cornus sericea	Redtwig Dogwood	24" ht./5 gal.	
IM	20	Ilex meserveae 'Blue Princess'	Blue Holly	30" ht./B&B	
PERENNIALS, GROUNDCOVERS, VINES					
AH	TBD	Anemone hepheensis	Windflower	2 gal pots	2' o.c.
CV	3	Clematis virginiana	Virgin Bowers Vine	2 gal pots	
EP	TBD	Echinacea purpurea	Purple Coneflower	2 gal pots	2' o.c.
GM	TBD	Geranium macrorrhizum 'Bevan's Variety'	Bigroot Geranium	2 gal pots	2' o.c.
LS	TBD	Liriope spicata	Lilyturf	1 gal pots	18" o.c.
TC	TBD	Tiarella cordifolia	Foamflower	2 gal pots	18" o.c.
VM	TBD	Vinca minor	Periwinkle	1 gal pots	15" o.c.



- PLANTING NOTES**
- All plant material shall be approved by the Landscape Architect prior to arrival on the site.
 - All plant material shall conform to the guidelines established by "The American Standard for Nursery Stock", published by the American Association of Nurserymen, Inc.
 - No substitution of plant species will be allowed without the approval of the Landscape Architect.
 - The Contractor shall locate and verify all utility line locations prior to staking and report any conflicts to the Landscape Architect.
 - All plants shall be staked out in their approximate location by the Contractor. The Contractor shall adjust the locations of these stakes as required by the Landscape Architect to account for subsurface utilities, other field conditions and to achieve design intent. Final locations must be approved by the Landscape Architect prior to planting.
 - No planting shall be installed before acceptance of rough grading of topsoil.
 - The rootballs of trees shall be planted 3" above adjacent finished grade. Excavate holes no deeper than the rootball of trees. Holes shall be at least 3' greater in diameter than root ball. Backfill planting hole with 'planting mix'. All plants which settle out of plumb or below finished grade shall be immediately replanted.
 - The rootballs of shrubs shall be planted 2" above adjacent finished grade. Excavate holes no deeper than the rootball of shrubs.
 - All shrubs, groundcovers and perennials shall be planted in continuous planting beds. All beds shall be excavated 12" and the topsoil and subsoil set aside for reuse. Remove all stone and debris from excavated soil. Backfill beds with 12" of 'planting mix' before planting shrubs, perennials and groundcovers.
 - 'Planting Mix' shall consist of 2 parts of topsoil saved from site excavations and 1 part compost. Thoroughly mix to create uniform blended mixture. If insufficient topsoil is available on the site, mix existing soil in a ratio of 1 part soil to 1 part compost. Remove all stones and debris larger than 2" from planting mix.
 - All beds as shown on the drawings shall be edged with a 4" trench neatly cut and backfilled with bark mulch. All beds shall be covered with no less than 2" depth settled bark mulch and no greater than 3" depth bark mulch.
 - All plants are to be thoroughly watered after installation, at least twice within the first 24 hours.



SEAL

CONSULTANT

PROJECT

DEVELOPMENT OF WALDEN 253

253 WALDEN STREET
CAMBRIDGE, MA 02138

PREPARED FOR

253 WALDEN ST LLC

195 LEXINGTON AVENUE
CAMBRIDGE, MA 02138

DRAWING TITLE

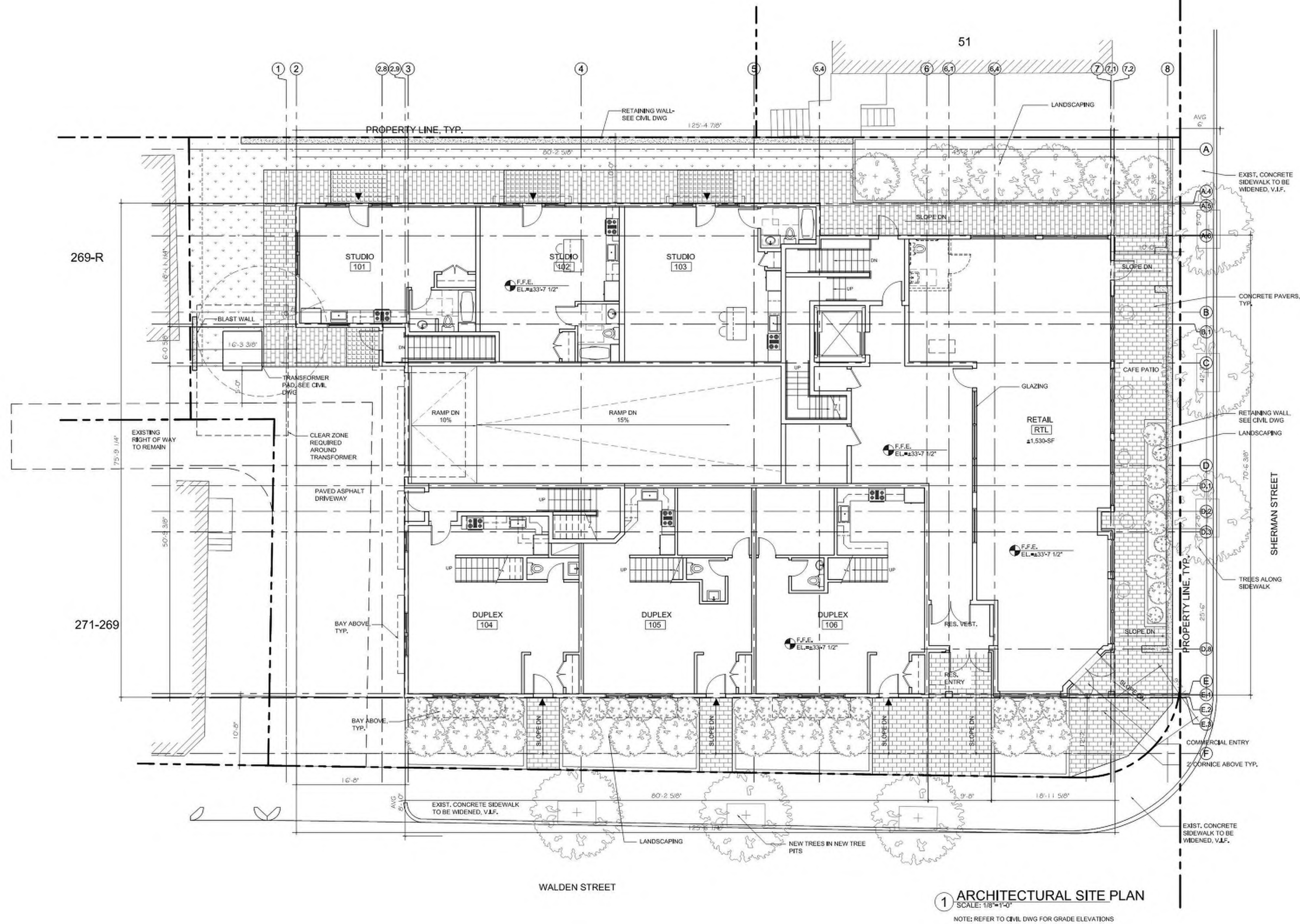
ARCHITECTURAL SITE PLAN

SCALE AS NOTED

REVISION / ISSUE	DATE
PERMIT SET	OCT 20, 2015
DRAWN BY KVS	REVIEWED BY PQ

SHEET

AS1.0



1 ARCHITECTURAL SITE PLAN
SCALE: 1/8"=1'-0"
NOTE: REFER TO CIVIL DWG FOR GRADE ELEVATIONS

269-R

271-269

WALDEN STREET

SHERMAN STREET

SEAL

CONSULTANT

PROJECT

DEVELOPMENT OF WALDEN 253

253 WALDEN STREET
CAMBRIDGE, MA 02138

PREPARED FOR

253 WALDEN ST LLC
195 LEXINGTON AVENUE
CAMBRIDGE, MA 02138

DRAWING TITLE

PARKING FLOOR PLAN

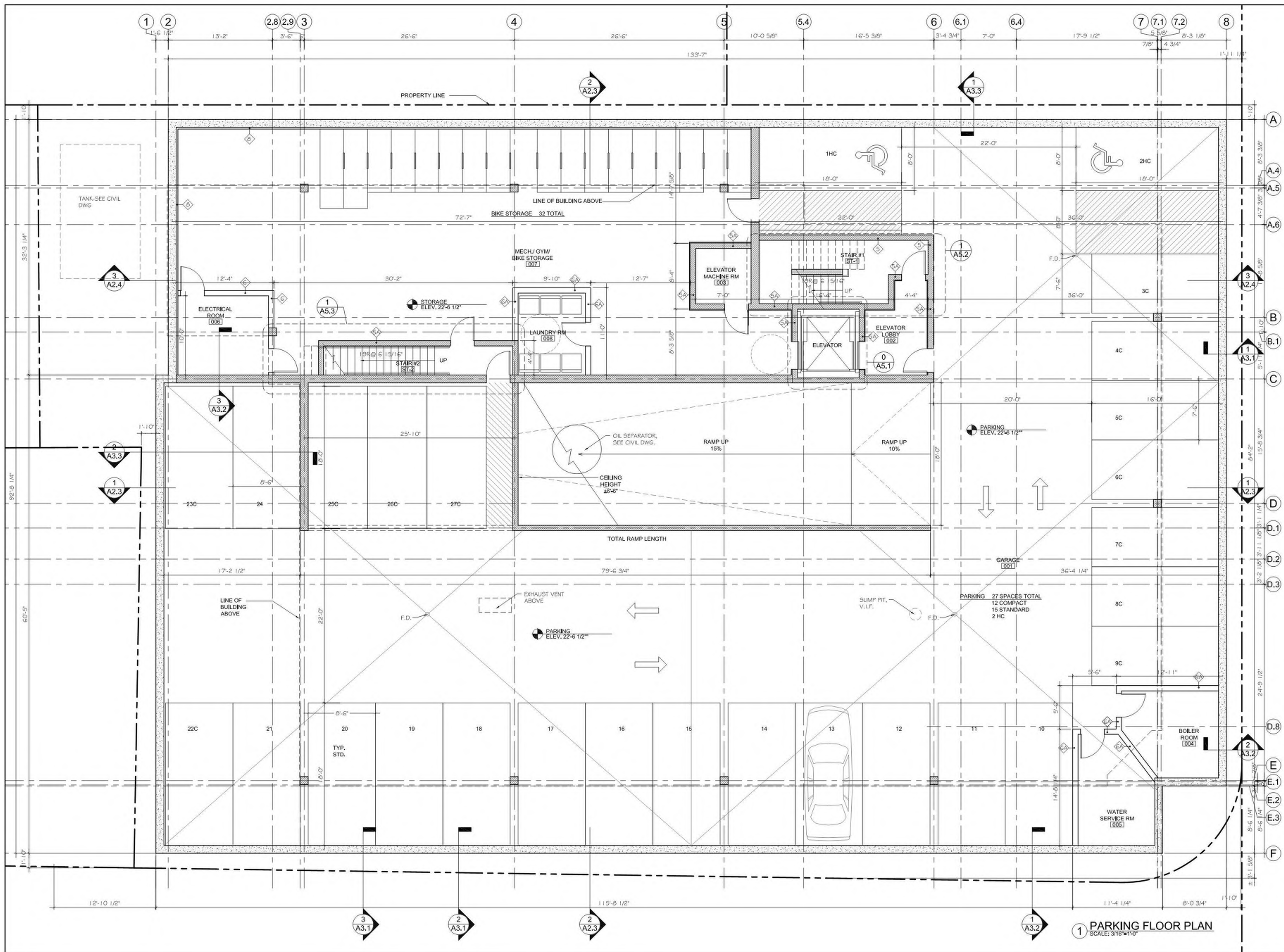
SCALE AS NOTED

REVISION / ISSUE DATE

PERMIT SET OCT 20, 2015

DRAWN BY KVS REVIEWED BY PQ

SHEET



1 PARKING FLOOR PLAN
SCALE: 3/16"=1'-0"

SEAL

CONSULTANT

PROJECT

DEVELOPMENT OF WALDEN 253

253 WALDEN STREET
CAMBRIDGE, MA 02138

PREPARED FOR

253 WALDEN ST LLC

195 LEXINGTON AVENUE
CAMBRIDGE, MA 02138

DRAWING TITLE

FIRST FLOOR PLAN

SCALE AS NOTED

REVISION / ISSUE	DATE

PERMIT SET

OCT 20, 2015

DRAWN BY

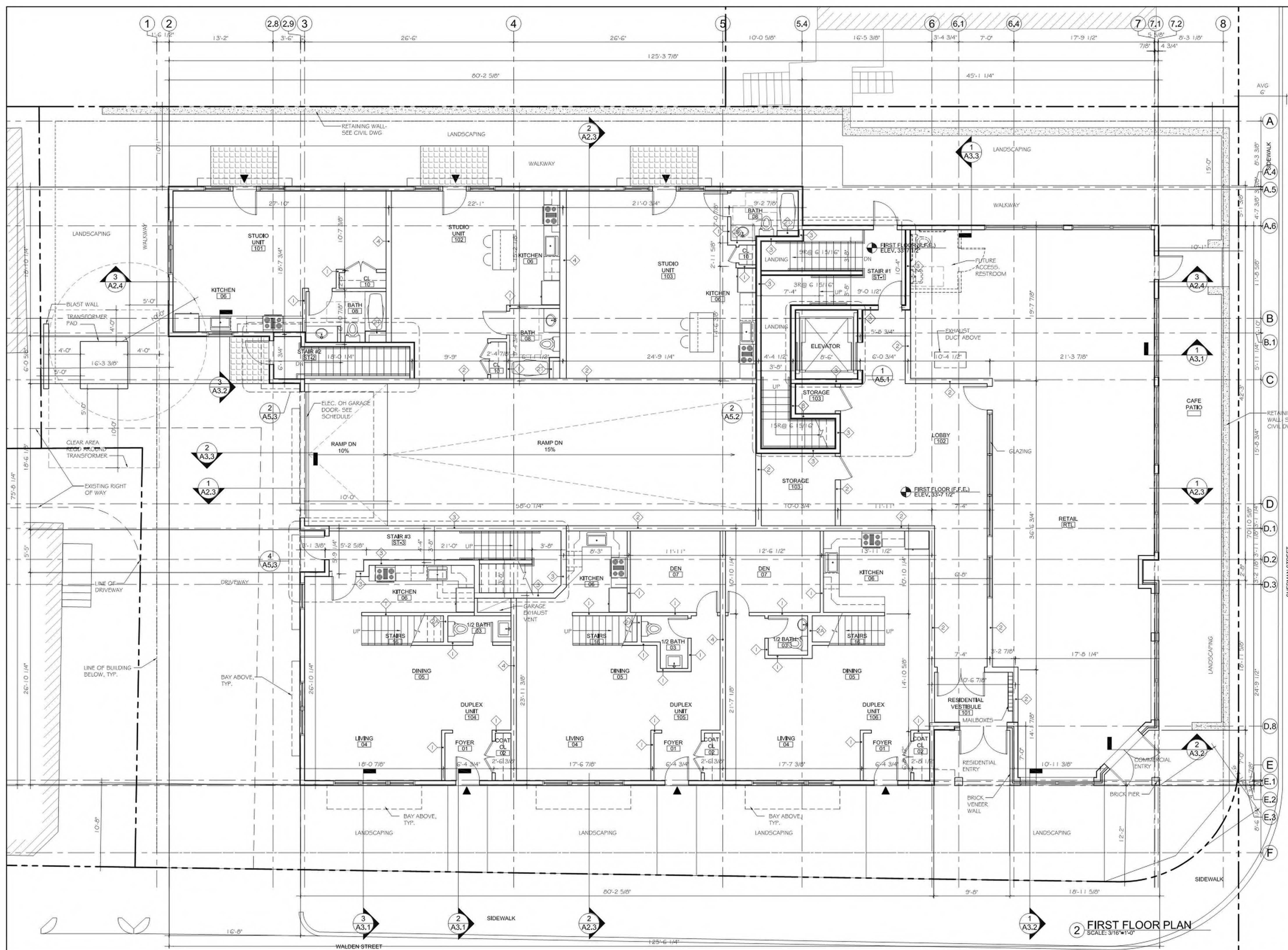
KVS

REVIEWED BY

PQ

SHEET

A1.1



2 FIRST FLOOR PLAN
SCALE: 3/16"=1'-0"

SEAL

CONSULTANT

PROJECT

**DEVELOPMENT OF
WALDEN 253**

253 WALDEN STREET
CAMBRIDGE, MA 02138

PREPARED FOR

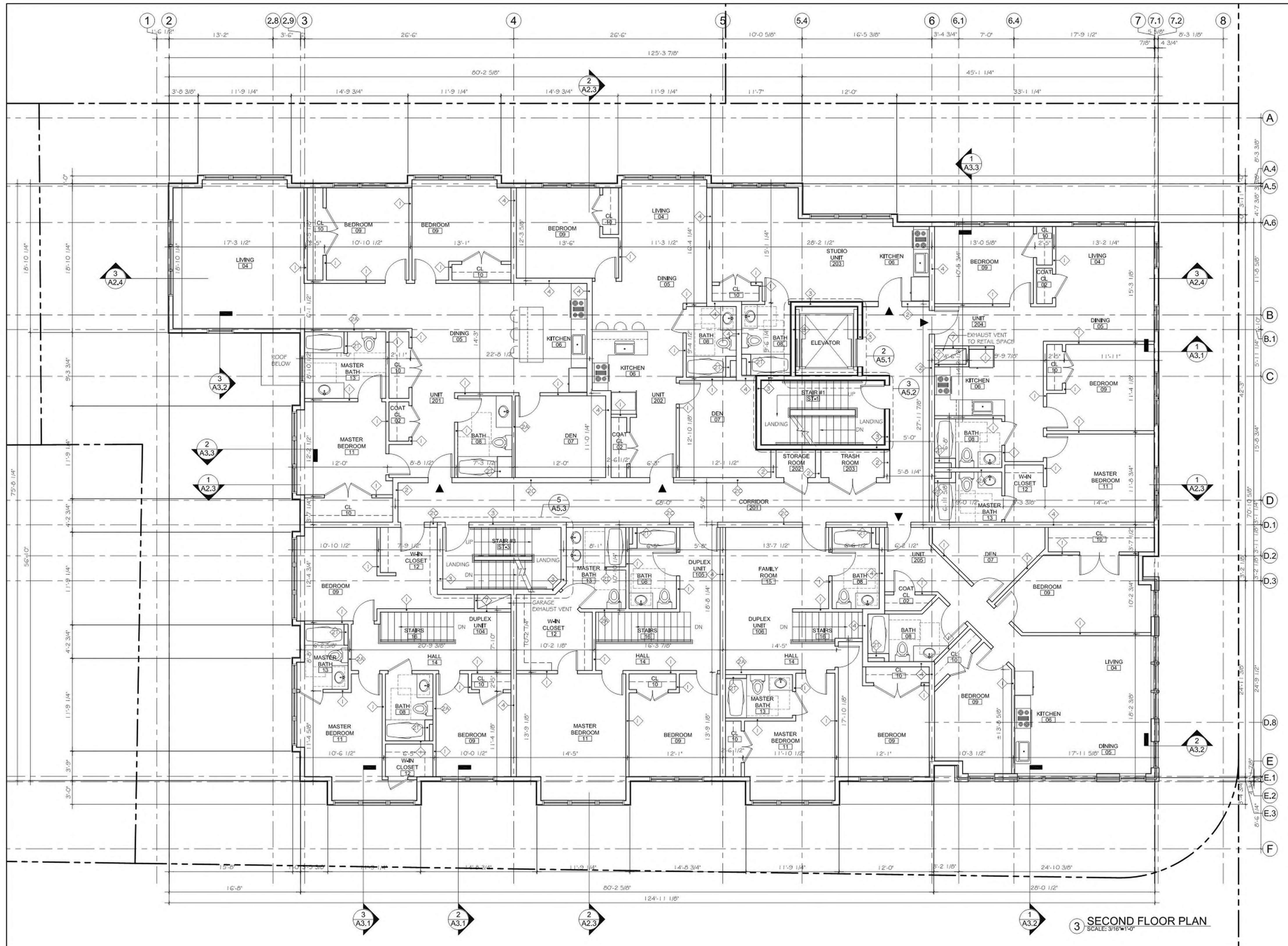
253 WALDEN ST LLC
195 LEXINGTON AVENUE
CAMBRIDGE, MA 02138

DRAWING TITLE

SECOND FLOOR PLAN

SCALE AS NOTED

REVISION / ISSUE	DATE
PERMIT SET	OCT 20, 2015
DRAWN BY KVS	REVIEWED BY PQ
SHEET	



3 SECOND FLOOR PLAN
SCALE: 3/16"=1'-0"

SEAL

CONSULTANT

PROJECT

**DEVELOPMENT OF
WALDEN 253**

253 WALDEN STREET
CAMBRIDGE, MA 02138

PREPARED FOR

253 WALDEN ST LLC
195 LEXINGTON AVENUE
CAMBRIDGE, MA 02138

DRAWING TITLE

THIRD FLOOR PLAN

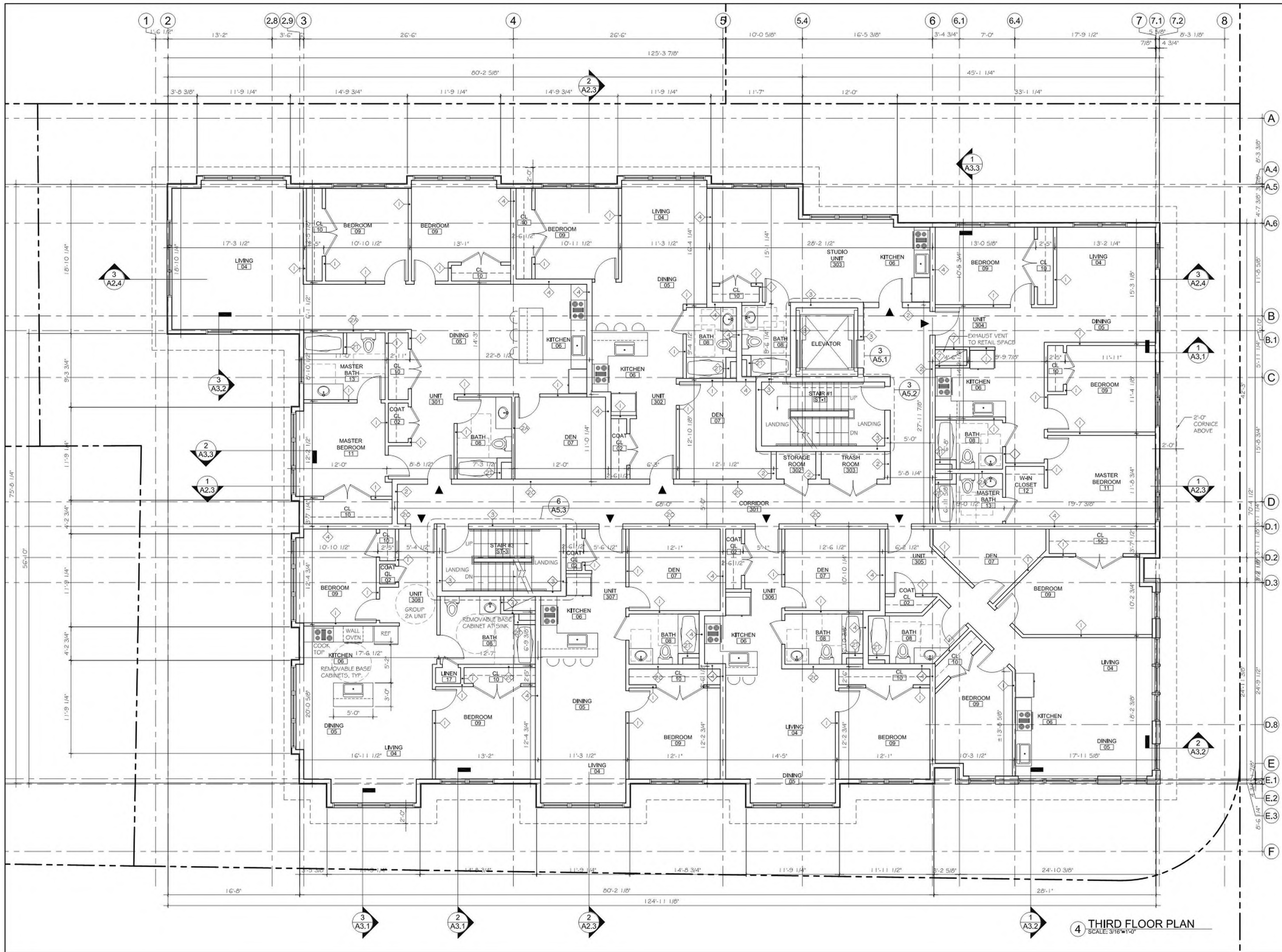
SCALE AS NOTED

REVISION / ISSUE	DATE

PERMIT SET OCT 20, 2015

DRAWN BY KVS REVIEWED BY PQ

SHEET



4 THIRD FLOOR PLAN
SCALE: 3/16"=1'-0"

SEAL

CONSULTANT

PROJECT

**DEVELOPMENT OF
WALDEN 253**

253 WALDEN STREET
CAMBRIDGE, MA 02138

PREPARED FOR

253 WALDEN ST LLC
195 LEXINGTON AVENUE
CAMBRIDGE, MA 02138

DRAWING TITLE

FOURTH FLOOR PLAN

SCALE AS NOTED

REVISION / ISSUE DATE

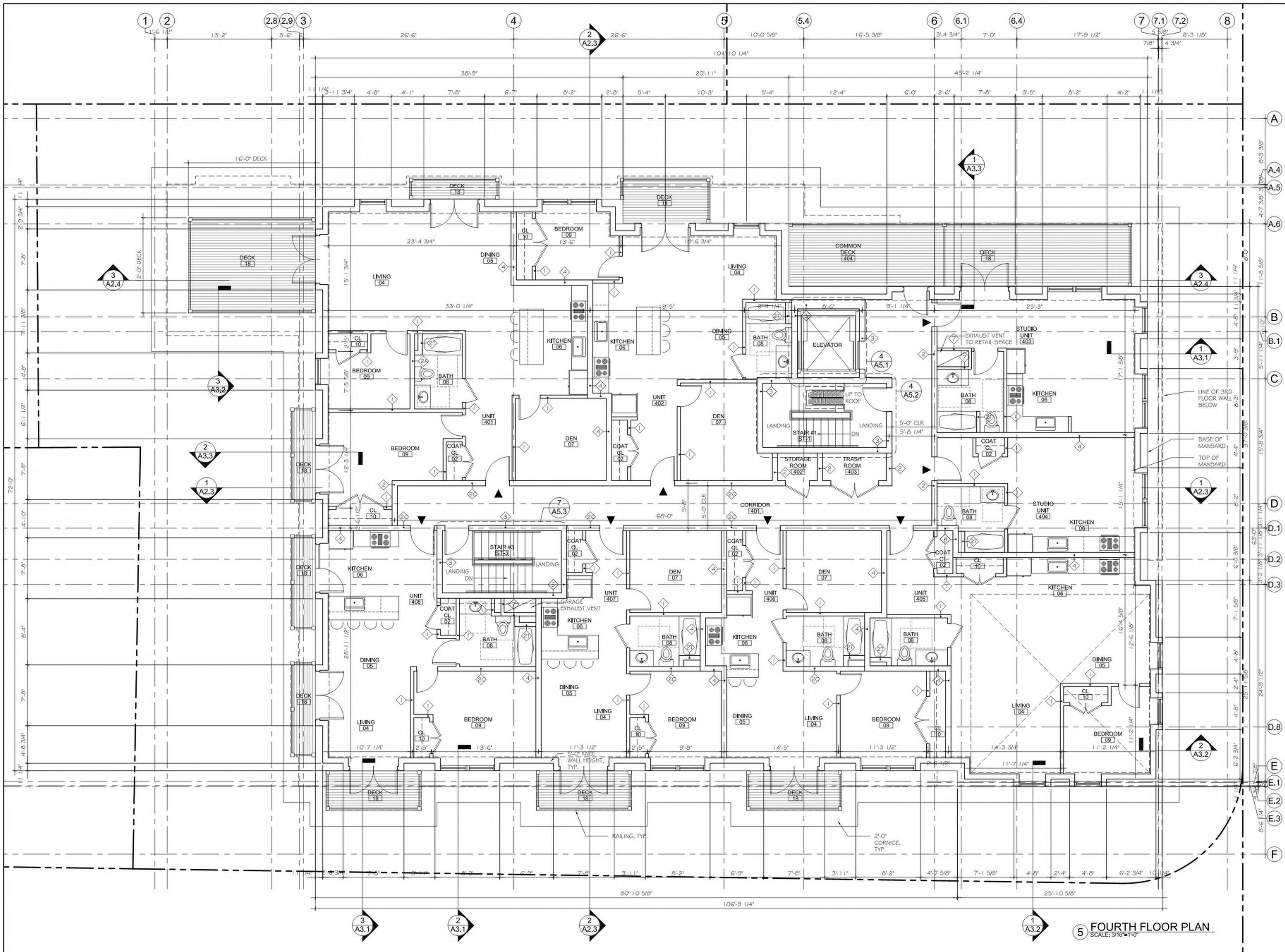
PERMIT SET OCT 20, 2015

DRAWN BY REVIEWED BY

KVS PQ

SHEET

A1.4



5 FOURTH FLOOR PLAN
SCALE: 3/16"=1'-0"

SEAL

CONSULTANT

PROJECT

DEVELOPMENT OF WALDEN 253

253 WALDEN STREET
CAMBRIDGE, MA 02138

PREPARED FOR

253 WALDEN ST LLC
195 LEXINGTON AVENUE
CAMBRIDGE, MA 02138

DRAWING TITLE

ROOF PLAN

SCALE AS NOTED

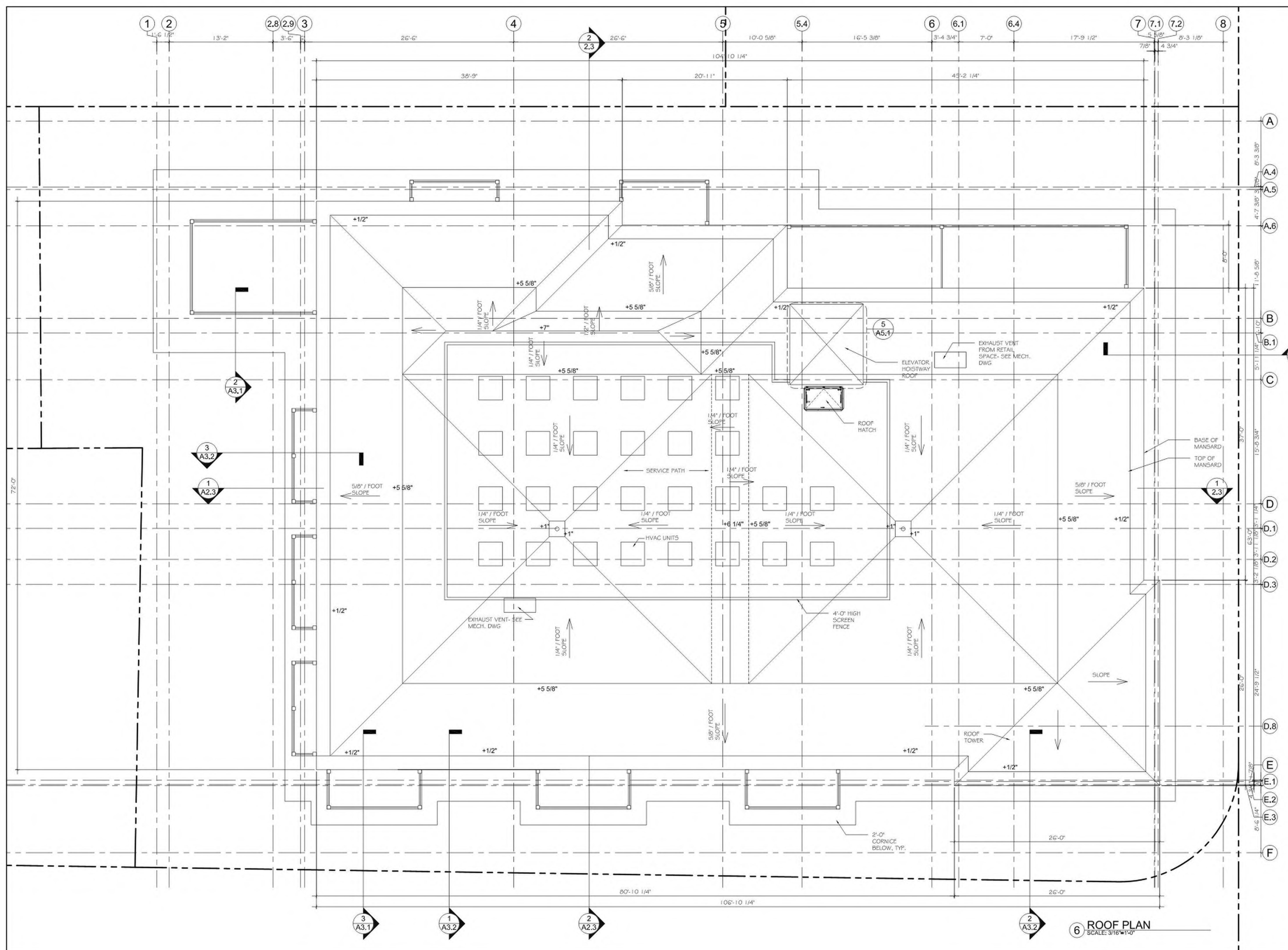
REVISION / ISSUE	DATE

PERMIT SET OCT 20, 2015

DRAWN BY KVS REVIEWED BY PQ

SHEET

A1.5



6 ROOF PLAN
SCALE: 3/16"=1'-0"

SEAL

CONSULTANT

PROJECT

DEVELOPMENT OF WALDEN 253

253 WALDEN STREET
CAMBRIDGE, MA 02138

PREPARED FOR

253 WALDEN ST LLC

195 LEXINGTON AVENUE
CAMBRIDGE, MA 02138

DRAWING TITLE

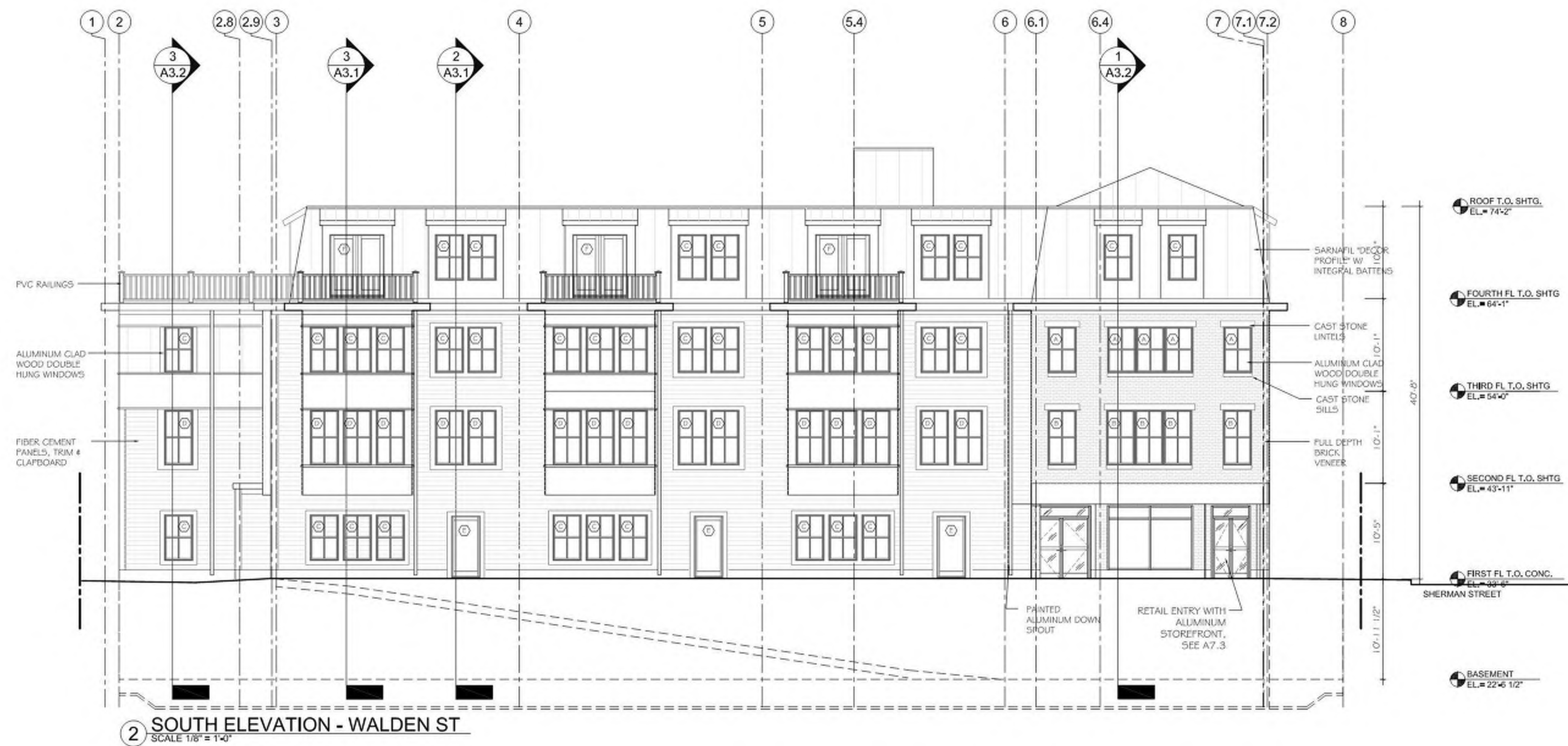
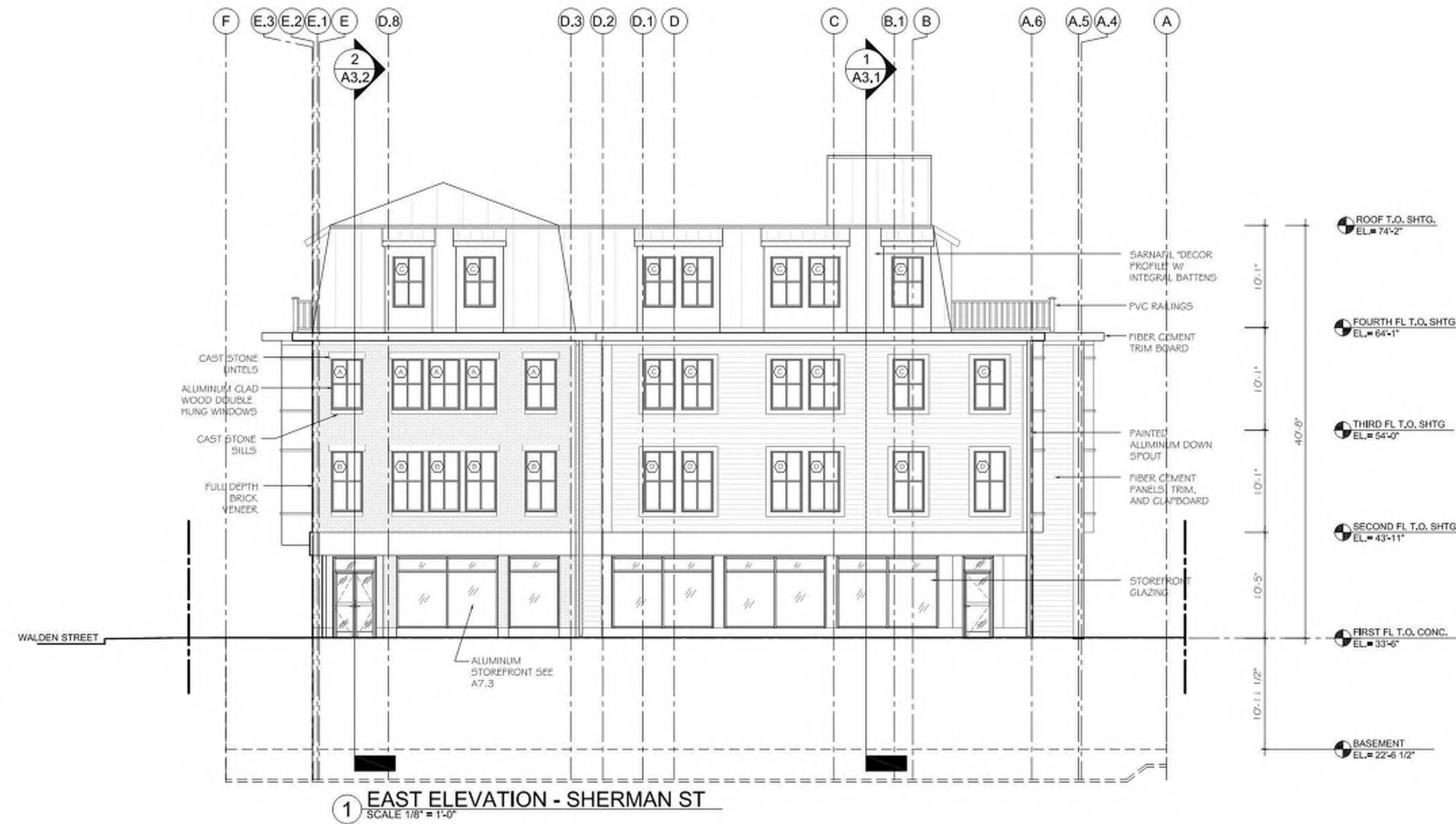
EAST & SOUTH ELEVATIONS

SCALE AS NOTED

REVISION / ISSUE	DATE
PERMIT SET	OCT 20, 2015
DRAWN BY JP	REVIEWED BY PQ

SHEET

A2.1



SEAL

CONSULTANT

PROJECT

**DEVELOPMENT OF
WALDEN 253**

253 WALDEN STREET
CAMBRIDGE, MA 02138

PREPARED FOR

253 WALDEN ST LLC

195 LEXINGTON AVENUE
CAMBRIDGE, MA 02138

DRAWING TITLE

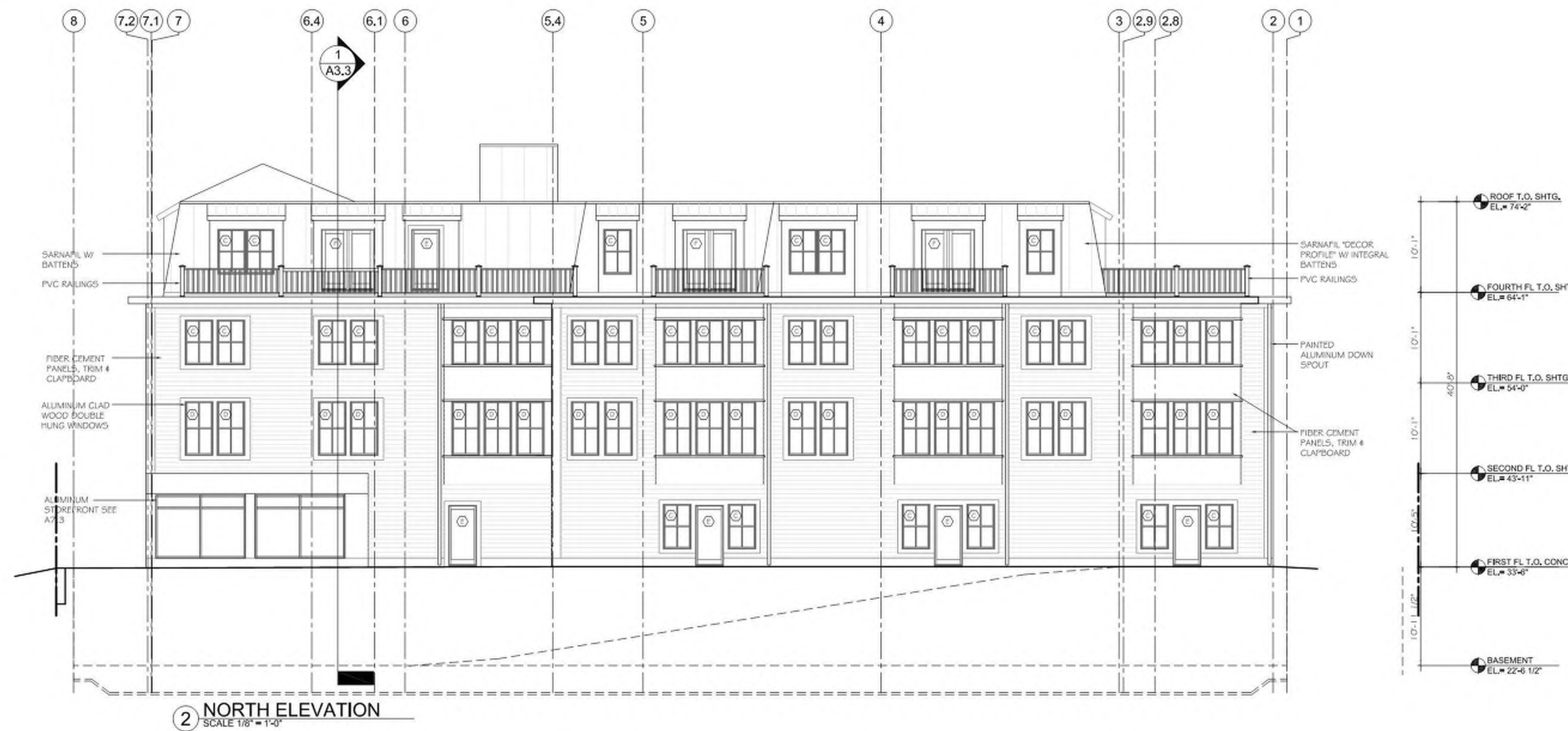
**WEST &
NORTH
ELEVATIONS**

SCALE AS NOTED

REVISION / ISSUE	DATE
PERMIT SET	OCT 20, 2015
DRAWN BY JP	REVIEWED BY PQ

SHEET

A2.2



SEAL

CONSULTANT

PROJECT

DEVELOPMENT OF WALDEN 253

253 WALDEN STREET
CAMBRIDGE, MA 02138

PREPARED FOR

253 WALDEN ST LLC
195 LEXINGTON AVENUE
CAMBRIDGE, MA 02138

DRAWING TITLE

BUILDING SECTIONS

SCALE AS NOTED

REVISION / ISSUE	DATE
PERMIT SET	OCT 20, 2015
DRAWN BY JP	REVIEWED BY PQ

SHEET

A2.3

