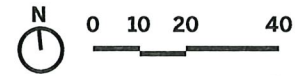


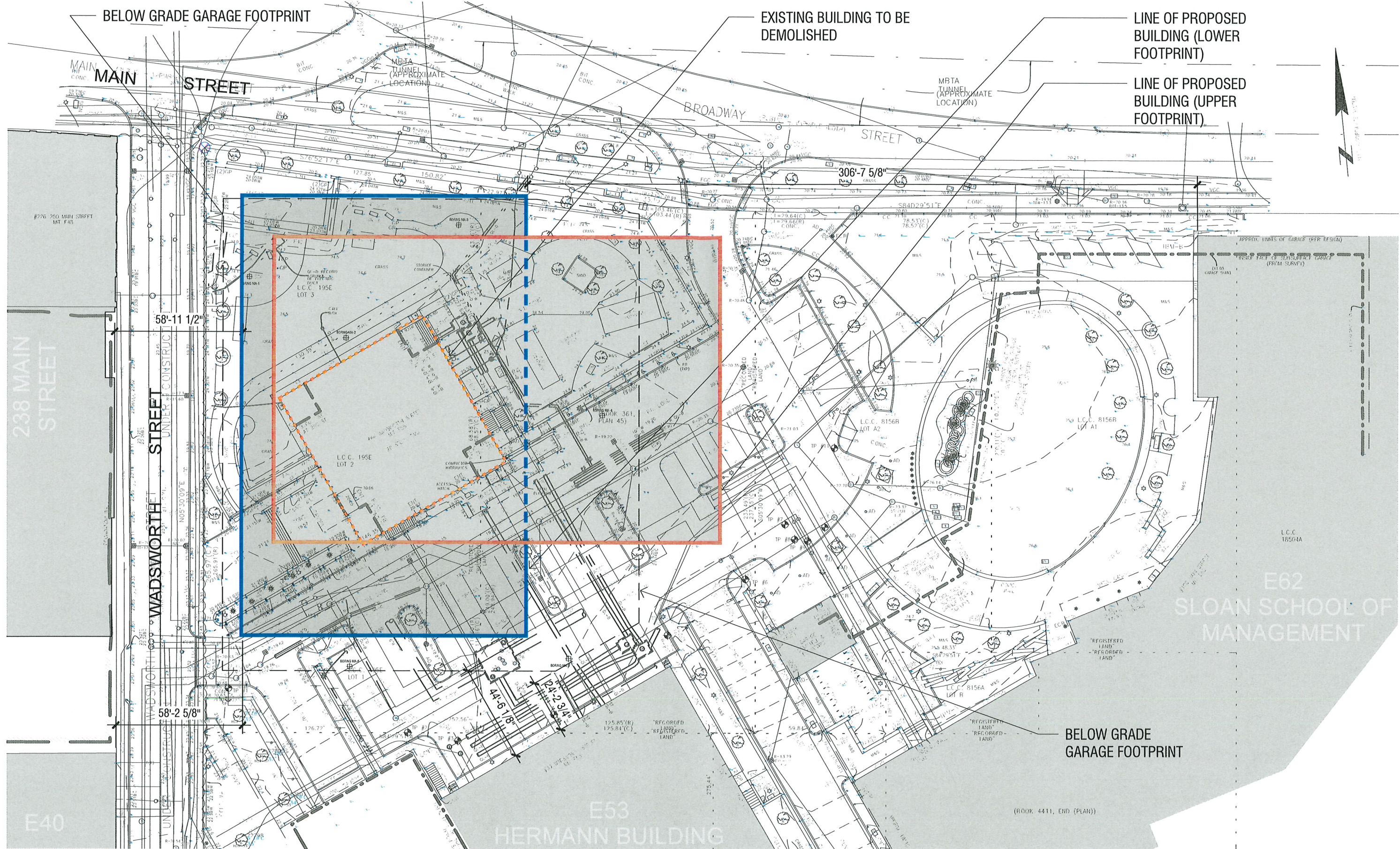
EXISTING BUILDING TO BE DEMOLISHED

84 WADSWORTH STREET
MIT E55

E53
HERMANN BUILDING

E62
SLOAN SCHOOL OF
MANAGEMENT



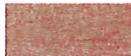
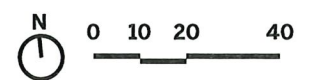
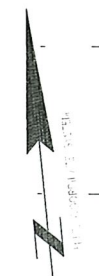


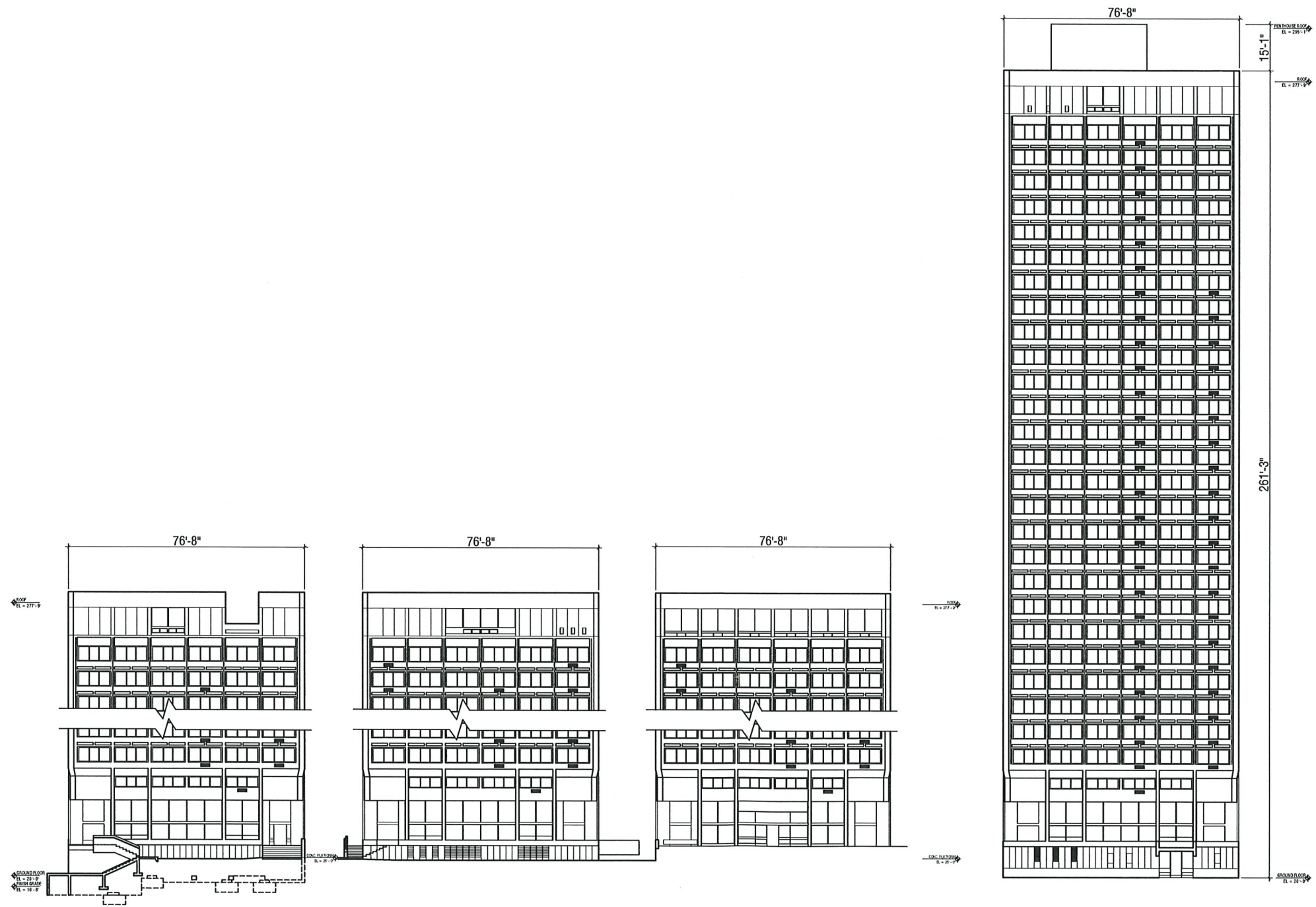
BELOW GRADE GARAGE FOOTPRINT

EXISTING BUILDING TO BE DEMOLISHED

LINE OF PROPOSED BUILDING (LOWER FOOTPRINT)

LINE OF PROPOSED BUILDING (UPPER FOOTPRINT)





EAST ELEVATION PARTIAL

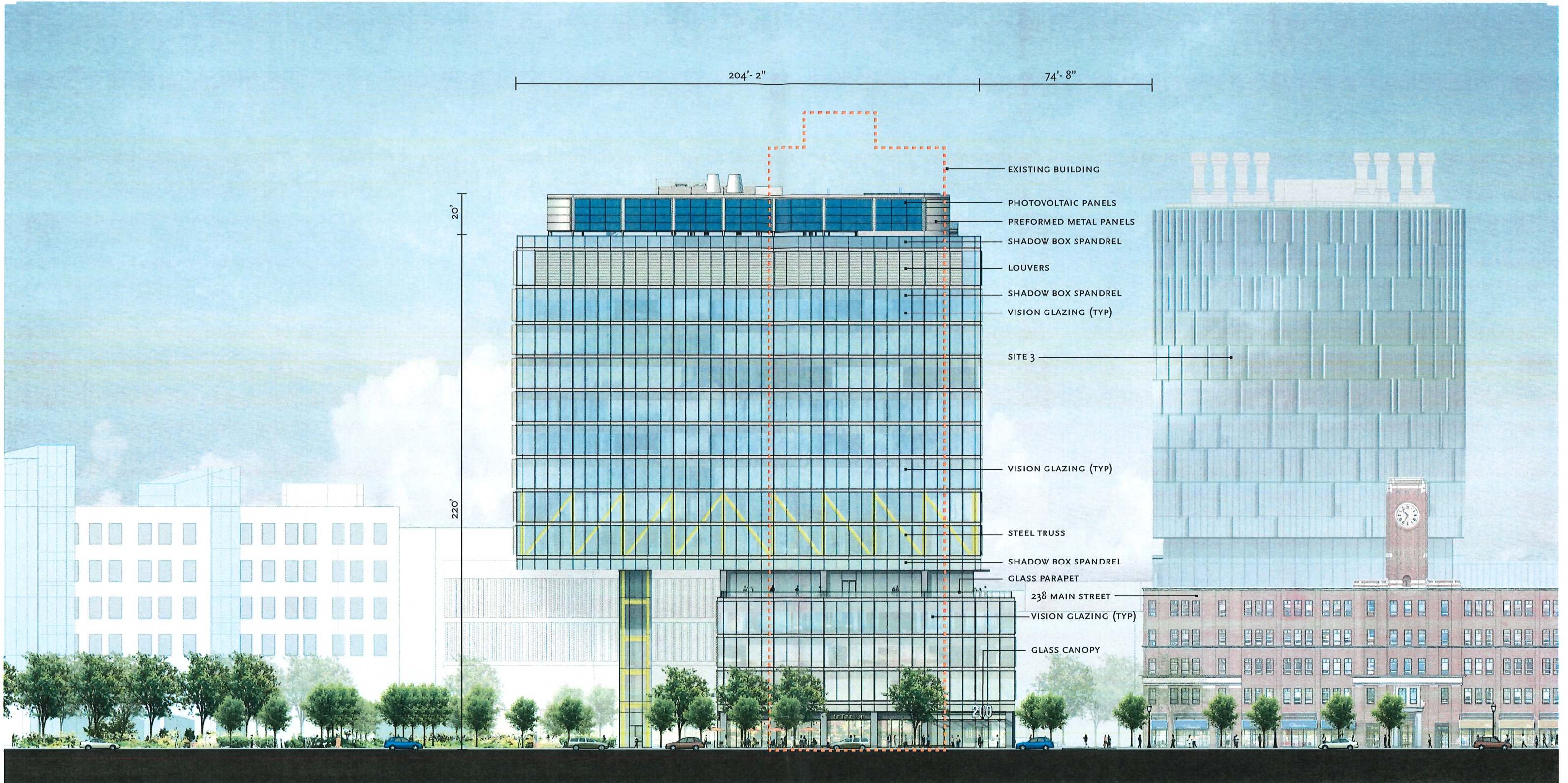
NORTH ELEVATION PARTIAL

SOUTH ELEVATION PARTIAL

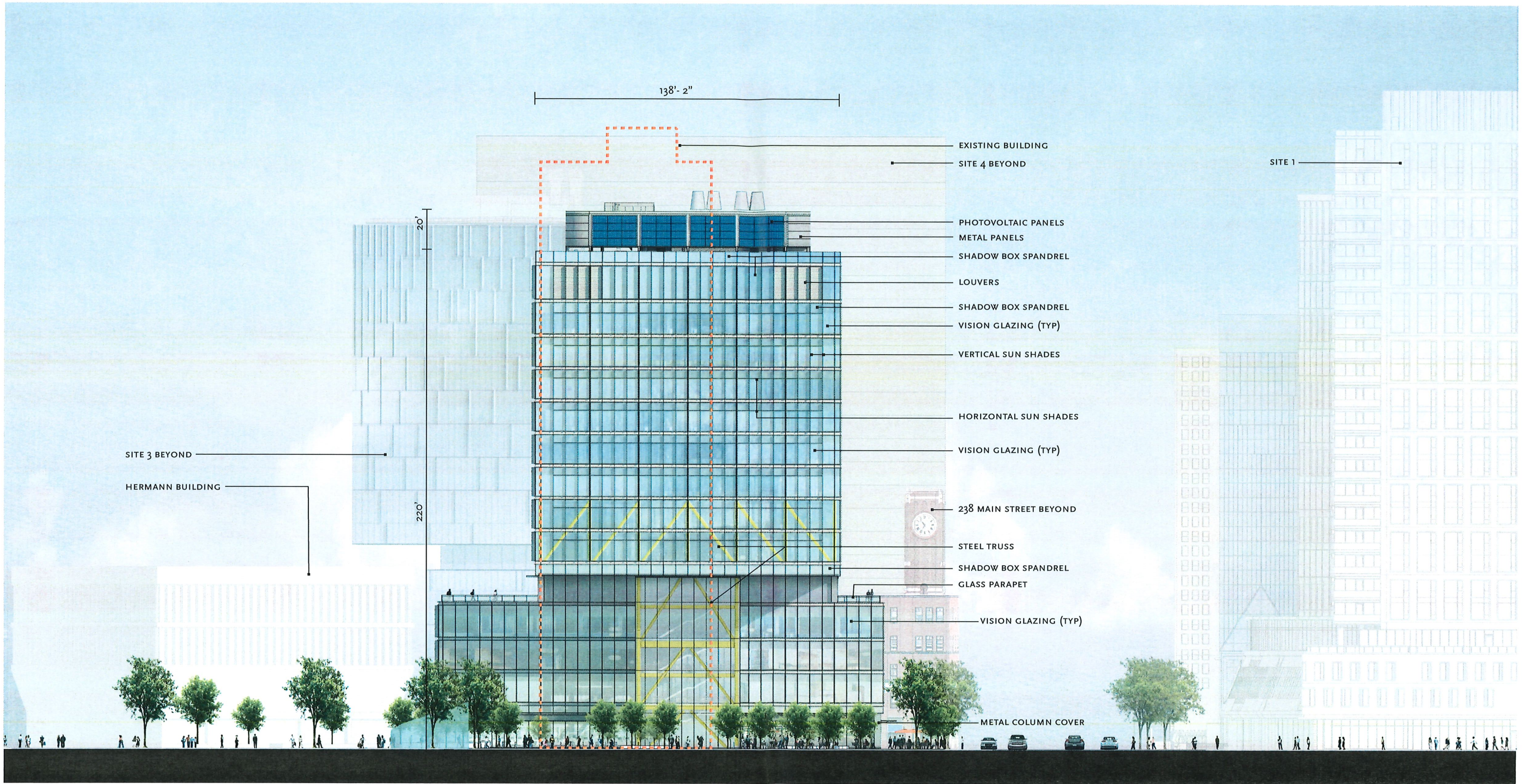
WEST ELEVATION

* NOTE : ELEVATIONS BASED ON EXISTING DRAWINGS DATED 09/17/1965

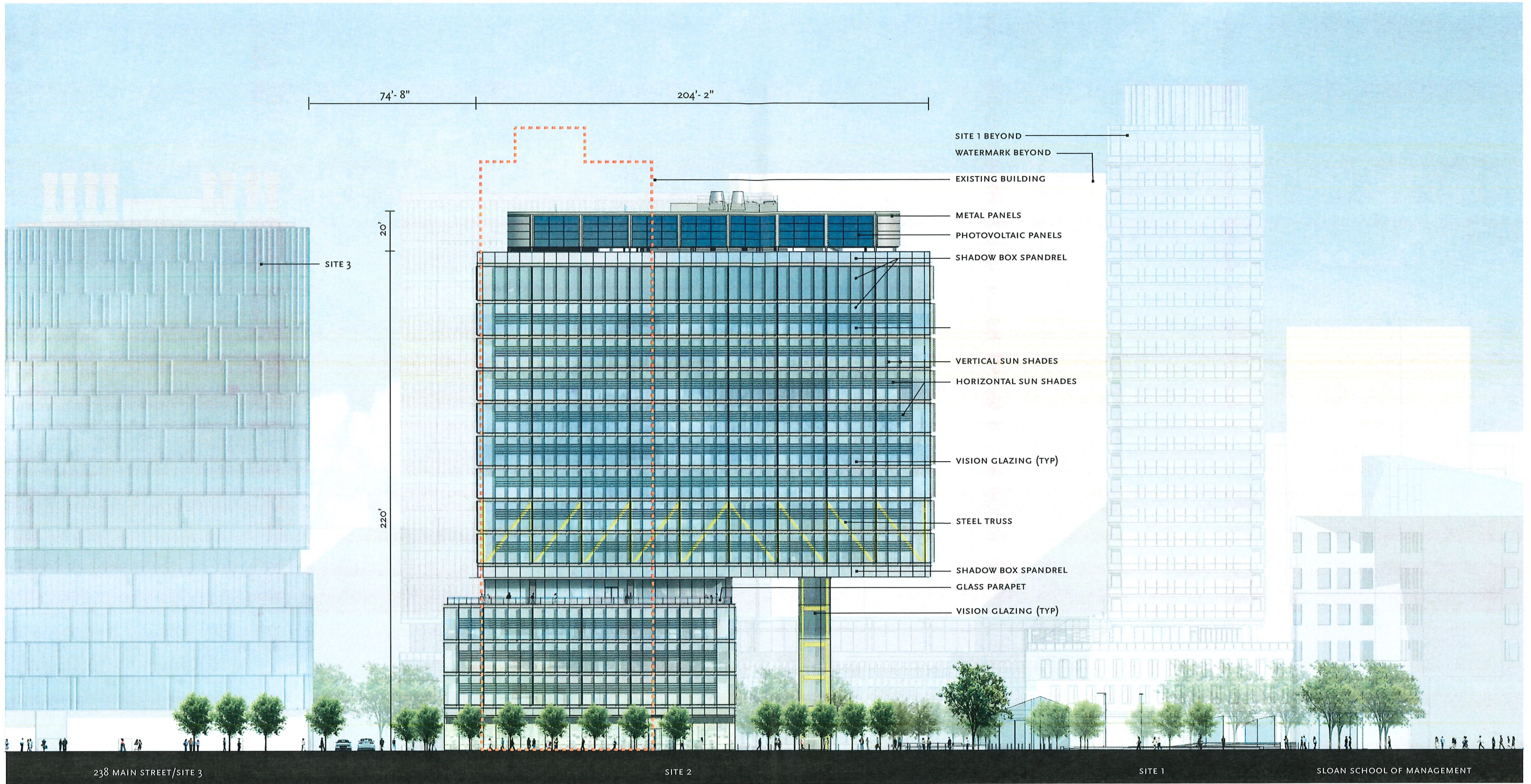
0 10 20 40



0 10 20 40



0 10 20 40



- SITE 1 BEYOND
- WATERMARK BEYOND
- EXISTING BUILDING
- METAL PANELS
- PHOTOVOLTAIC PANELS
- SHADOW BOX SPANDREL
- VERTICAL SUN SHADES
- HORIZONTAL SUN SHADES
- VISION GLAZING (TYP)
- STEEL TRUSS
- SHADOW BOX SPANDREL
- GLASS PARAPET
- VISION GLAZING (TYP)

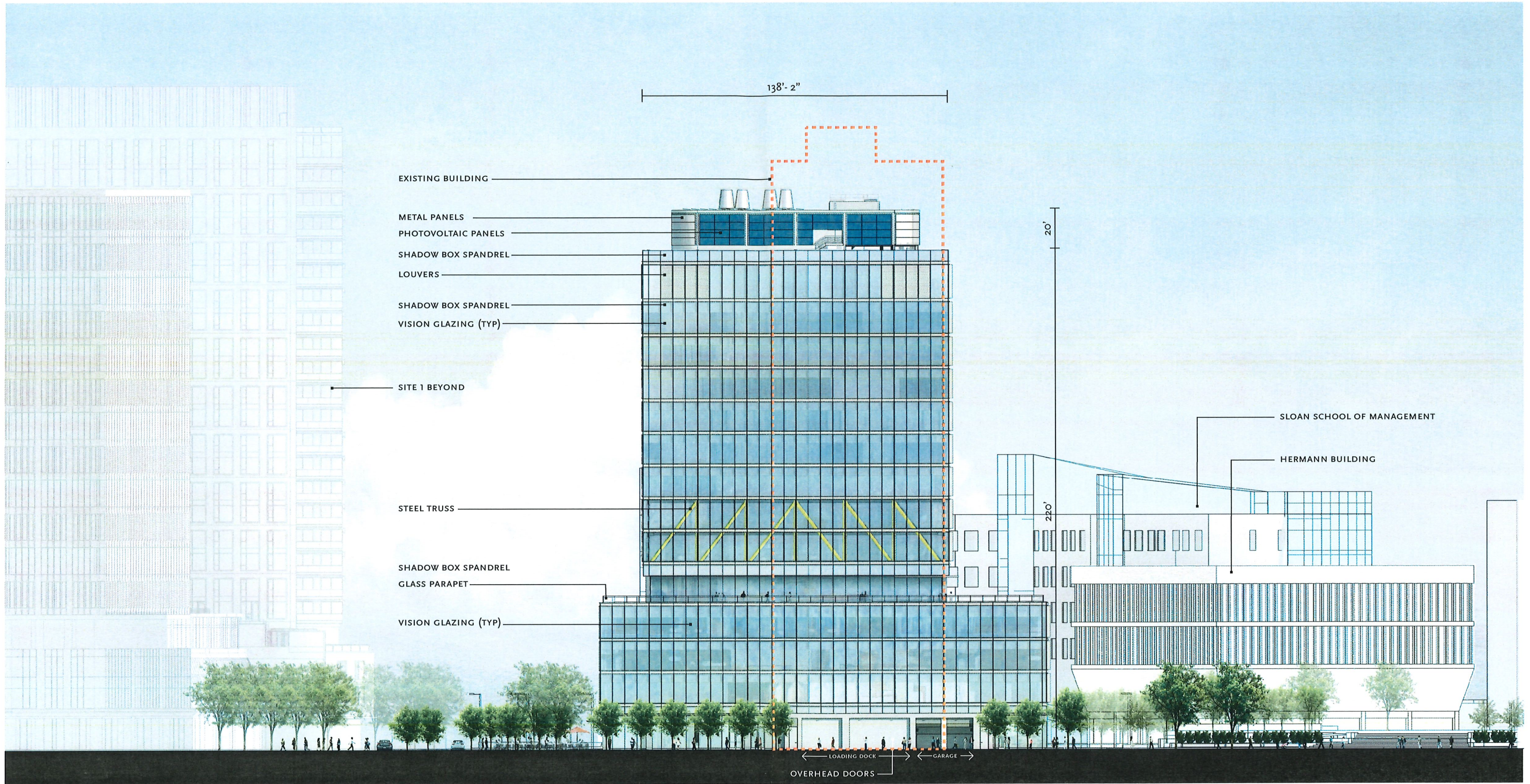
238 MAIN STREET/SITE 3

SITE 2

SITE 1

SLOAN SCHOOL OF MANAGEMENT

0 10 20 40



0 10 20 40

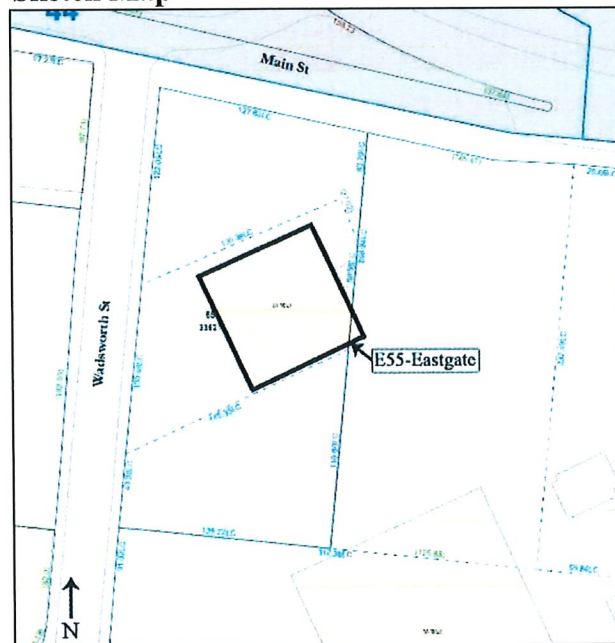
Inventory Form – Building

Massachusetts Institute of Technology
77 Massachusetts Avenue
Cambridge, Massachusetts

Photograph



Sketch Map



Recorded By: L. Kline, M. Andrade, and V. Adams, PAL;
Wendy Frontiero

Organization: Massachusetts Institute of Technology

Date: November 2016

Assessor #	Significance Level/ MACRIS Designation	MIT BLDG #
47-85	Moderate	E55

Historic Name: Eastgate
Address: 60 Wadsworth Street
Uses: Present: Apartment House
Uses: Original: Apartment House
Owner: MIT
MIT Occupied: 1967
Date of Construction: 1967
Source: MIT
Architect/Builder: Eduardo Catalano with Robert C. Brannen and Paul Shimamoto

Style/Building Type: Brutalist
Primary Exterior Materials: Concrete and glass
General Condition: Good
Major Alterations/Historic Integrity: No major alterations
Approximate Lot Size: 33,621 sq. ft.
Key Site/Setting Features: Sited at an angle to Kendall Square but parallel to Memorial Drive; low concrete panel wall topped by chain-link fence encloses triangular corner site; tall birch and other deciduous trees and evergreen shrubs planted along inside of wall screen grounds from street view; play yard occupies northeast portion of site; surface parking lot on south side

MIT Inventory Form Continuation Sheet

Form Page 2

E55-Eastgate
60 Wadsworth Street

DESCRIPTION

- 29-story Brutalist reinforced concrete residential tower with top story and 26 floors of apartments raised above three-story base
- Visual terminus at east end of campus, counterpoint to Westgate Tower (#W85, 1962) and later Tang Hall (#W84, 1967) at opposite end of campus; height also relates to Green Building (#54, 1964) near center of Main Campus
- Square plan, approximately 105 ft by 105 ft, flat roof
- Slender vertical piers and wide horizontal beams with rectangular cut-outs divide each elevation into six bays
- Three-story base consists of ground-floor level clad in vertical concrete panels; tall glazed second-floor level with cut-out corner bays and double-width center bays; and third-floor level with concrete panel corner bays and horizontal window banks between wide concrete panels in four center bays
- Heavy cantilevered I-shaped slab at south bay of west elevation marks recessed ground-floor main entrance with small concrete plaza facing Wadsworth Street; second-floor main entrance recessed in wide center bay of south elevation accessed by metal exterior steps from surface parking lot along south side of building; door to east corner bay has concrete exterior steps to fenced play yard
- Concrete angles slightly outward between base and shaft, corner piers on shaft form small cut-out
- Upper stories have horizontal bands of metal-framed windows recessed in each bay, with central one-over-one awning sash flanked by single fixed sash
- Top story has wide band of concrete along roofline and inward-slanting concrete base; fenestration of top story varies on each elevation: south elevation has large paired windows flush with facade in each bay; east, north, and west elevations have different combinations of one or two recessed windows, three small slit windows near base, and one tall slit window between two bays; one bay of east elevation is cut out at location of rooftop lounge
- Upper floors have unobstructed views toward Memorial Drive and Charles River to south and to Main Campus to west
- Low concrete panel wall topped by chain-link fence encloses triangular corner site; tall birch and other deciduous trees and evergreen shrubs planted along inside of wall screen grounds from street view; play yard occupies east portion of site

HISTORICAL NARRATIVE

MIT constructed Building E55 at 60 Wadsworth Street in 1967 as a residence for married graduate students and faculty, primarily associated with the nearby School of Industrial Management (SIM). This area of Cambridge was largely undeveloped until the early to mid-twentieth century. By 1903, the Charles River seawall was built and the land filled in behind it, with the present street pattern laid out and small lots platted for residential development similar to Back Bay. The construction of the present Longfellow Bridge (1900–1906) and of a subway line down Main Street with a station at Kendall Square (1912) brought new commercial activities and construction, including carriage factories, a lumberyard, and an ironworks. A group of office and research buildings was constructed along Memorial Drive between Kendall Square and the MIT campus, including the corporate offices for Lever Brothers. By 1950, a gas station and parking lot occupied the parcel of land at the corner of Wadsworth and Main streets. The Kendall Square area was subject to large-scale building demolition as part of urban renewal in the 1960s, and today, many vacant lots have been given over to surface parking. MIT began expanding east of its main Cambridge campus in the 1950s with the acquisition of several substantial buildings along Memorial Drive, including the former Lever Brothers corporate offices at the corner of Wadsworth and Memorial (#E52, 1938). The SIM, the School of Humanities, and the Faculty Club occupied the building, renamed the Sloan Building, in 1952. Beginning in 1959, the SIM embarked on a planning process to develop nearby housing, a library, recreational facilities, and parking for the school's students and faculty. At the same time, MIT conducted a number of housing studies in response to the substantial increase in the number of students requiring housing during the post-World War II years and the tightening of the real estate market in Cambridge. The Institute asked MIT Architecture Professor Eduardo F. Catalano to develop an overall design for the area around the Sloan Building (now known as the Morris and Sophie Chang Building).

Catalano's initial design consisted of two residential towers, a free-standing auditorium, and a library/academic building all connected to each other and the existing Sloan Building by a large plaza with underground parking. The Grover M. Hermann

E55-Eastgate
60 Wadsworth Street

Building (#E53, 1965) housing the library and academic space was the first part of Catalano's plan to be completed and initiated the Institute's development of the former industrial area between the Main Campus and Kendall Square. For the residential component of the plan, MIT acquired the property north of the Hermann Building and removed the small gas station on the lot. Construction on the first of the two planned towers (Building E55) began in January 1966, funded by the College Housing Loan Program of the federal Housing and Home Finance Agency, and was completed in August 1967. Catalano chose to site the tower parallel to Memorial Drive and the Hermann Building rather than to Wadsworth Street. The second tower included in Catalano's plan was never built. Eastgate continues to function as a residence for married graduate students with lounges, meeting rooms, and laundry facilities on the top floor and a daycare facility on the lower levels.

Prior to the Hermann Building and the Eastgate residential tower, the architectural team of Eduardo Catalano (1917–2010) in association with Robert C. Brannen and Paul Shimamoto had also designed the Stratton Student Center (#W20), constructed in 1963–1965 on MIT's West Campus. All three buildings are representative of Catalano's mid-career work in concrete. A native of Argentina, Catalano studied architecture at Buenos Aires University and the University of Pennsylvania before completing his postgraduate work at Harvard under Walter Gropius and Marcel Breuer. He taught at London's Architectural Association before heading the Department of Architecture at North Carolina State University's School of Design from 1951 to 1956, when Pietro Belluschi hired him to teach at MIT. Catalano remained at MIT until his retirement in 1977 and maintained an architectural practice in Cambridge through 1995. Robert C. Brannen studied at the University of Washington in Seattle and worked with Catalano in Cambridge from 1964 to 1966. He served as associate architect on many of Belluschi's projects and in 1967 organized his own firm Jung-Brannen Associates, Inc. Paul Shimamoto studied with Catalano at North Carolina State University and earned his master's degree in architecture from MIT in 1961. He worked on several buildings with Catalano and Belluschi, including the Polaroid building at Technology Square.

In addition to his work at MIT, Catalano designed several other buildings in and around Boston and Cambridge, including the New England Gas and Electric Association II Building at 671–675 Mass. Ave. in Cambridge (1966), the Charlestown Branch of the Boston Public Library (1967–1970), One Washington Mall in Boston (1972), and the Cambridge Rindge and Latin School (1976–1977). Other major works by the internationally known Catalano include his own residence in Raleigh, North Carolina (1954, demolished 2001), with a distinctive hyperbolic paraboloid roof; the Guilford County-Greensboro Government Center in Greensboro, North Carolina (1966–1973); collaborations with Pietro Belluschi on the Polaroid building at Technology Square in Cambridge (1965) and the Juilliard School of Music and Alice Tully Hall at Lincoln Center in New York (1969); the Gorton Corporation Headquarters Building in Gloucester, Massachusetts (1970); the US Embassy in Buenos Aires (1971); and the Hampden County Hall of Justice in Springfield, Massachusetts (1973).

BIBLIOGRAPHY and/or REFERENCES

- Hail, Christopher. *Cambridge Buildings and Architects*. 2005.
 Simha, O. Robert. *MIT Campus Planning, 1960–2000*. 2001.
 Cambridge Historical Commission (CHC). *Survey of Architectural History in Cambridge. Report Three: Cambridgeport*. 1971.
 CHC survey files for Building E55.
 1903, 1916 atlases (G. W. Bromley and W. S. Bromley)
 1930 atlas (G. W. Bromley)
 1934, 1950 Sanborn Maps
 Pasnik, Mark, Michael Kubo, and Chris Grimley. *Heroic*. 2015.
 Morgan, Keith N., ed. *Buildings of Massachusetts: Metropolitan Boston*. 2009.
 Massachusetts Historical Commission (MHC). MACRIS search, 7/2016.
 Bowker, R.R. Co. *American Architects Directory*. 1970.
Boston Globe, 2/14/2010
The Guardian, 2/15/2010
 Preservation Greensboro. "Greensboro and the Concrete Jungle." Electronic resource,
<https://preservationgreensboro.org/greensboro-and-the-concrete-jungle/>, accessed August 2016.

E55-Eastgate
60 Wadsworth Street

MIT Museum. "Historic photographs of Building E55." Electronic resource,
<https://webmuseum.mit.edu/detail.php?module=subjects&type=browse&id=7&term=Cambridge+Campus+--+Existing+Buildings&page=1&kv=1139&record=38&module=subjects>, accessed August 2016.
 MIT Archives, Planning Office Records, Archival Collection 205, Series I, Box 54, Folder 10 and Series II, Tube 162

PHOTOGRAPHS

Front cover: South and east elevations, looking northwest from parking lot.



North elevation, looking south from opposite corner of Wadsworth and Main streets.

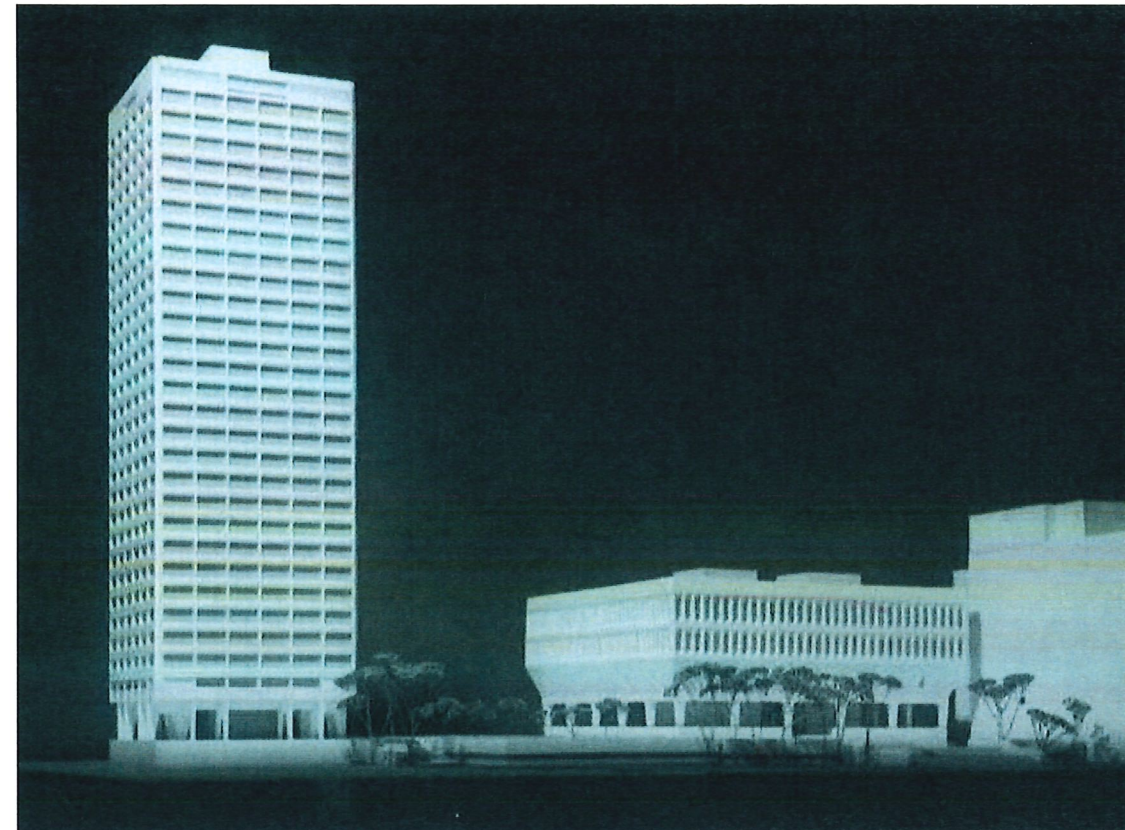


Detail of ground level, south and east elevations, looking northwest from parking lot.



Entrance on west elevation, looking east from Wadsworth Street.

HISTORIC IMAGES



Model of Building E55 at left and E53 at right (MIT Museum).

E55-Eastgate
60 Wadsworth Street



1966 photograph of Eastgate (# E55) under construction (MIT Museum).

E55-Eastgate
60 Wadsworth Street



1967 photograph of Eastgate completed (MIT Museum).