

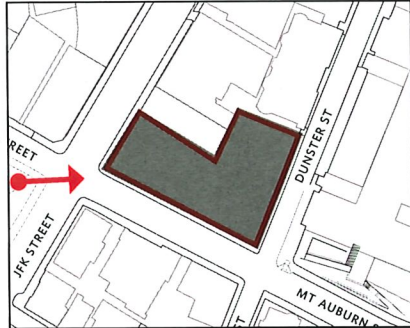
UPDATES - CAMBRIDGE HISTORIC COMMISSION JANUARY 06, 2022

1860 HORSE STABLE



PROPOSED - PREVIOUS

VIEW FROM WINTHROP PARK

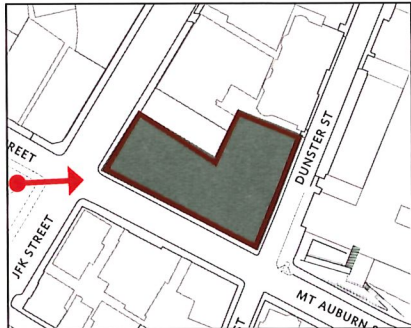


KEY PLAN



PROPOSED - UPDATED

VIEW FROM WINTHROP PARK

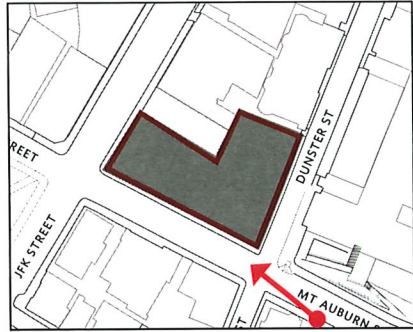


KEY PLAN



PROPOSED - PREVIOUS

MT AUBURN VIEW LOOKING WEST

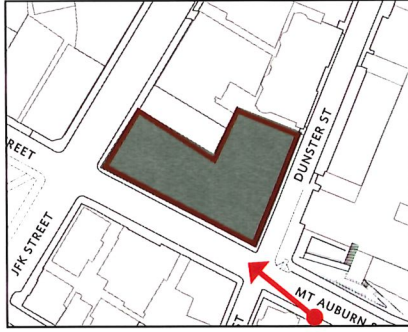


KEY PLAN



PROPOSED - UPDATED

MT AUBURN VIEW LOOKING WEST

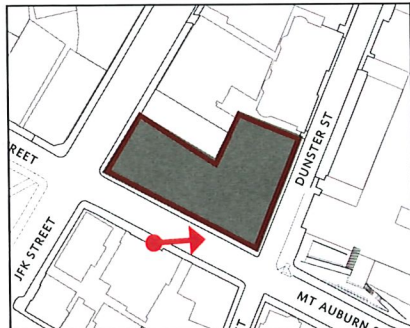


KEY PLAN

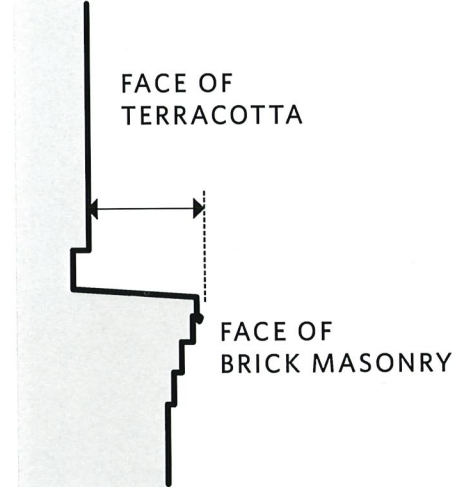


PROPOSED - PREVIOUS

MT. AUBURN LOOKING EAST



KEY PLAN

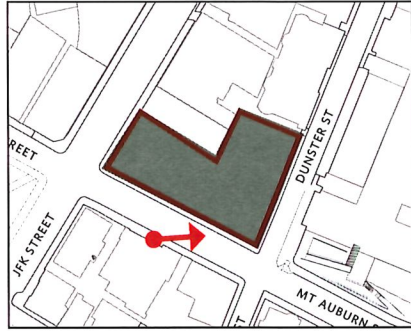


DETAIL SKETCH ABOVE GABLE



PROPOSED - UPDATED

MT. AUBURN LOOKING EAST

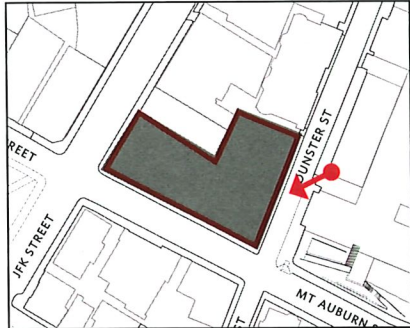


KEY PLAN

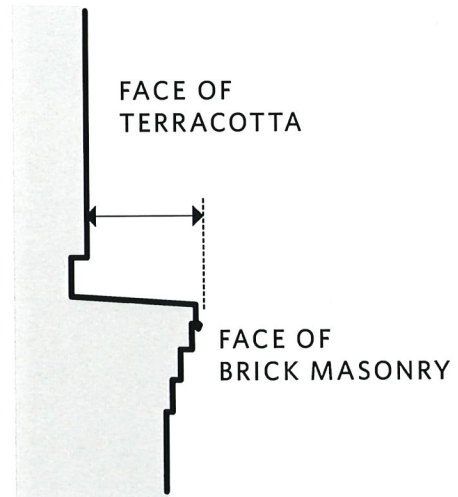


PROPOSED - PREVIOUS

DUNSTER VIEW LOOKING SOUTH



KEY PLAN

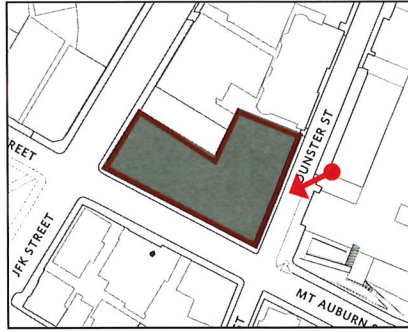


DETAIL SKETCH ABOVE EXISTING BRICK



PROPOSED - **UPDATED**

DUNSTER VIEW LOOKING SOUTH



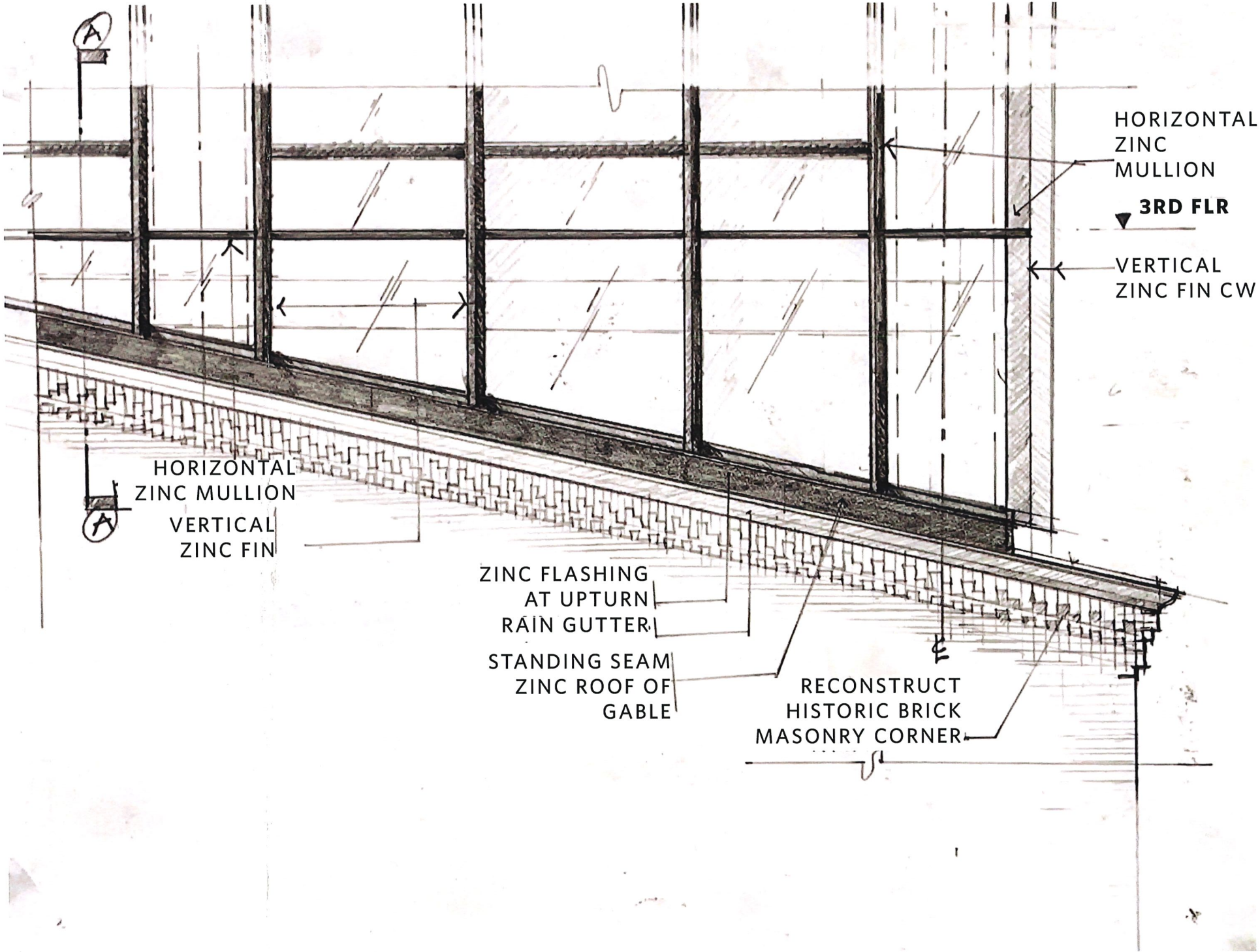
KEY PLAN



GABLE ROOF DETAIL



GABLE ROOF RENDER

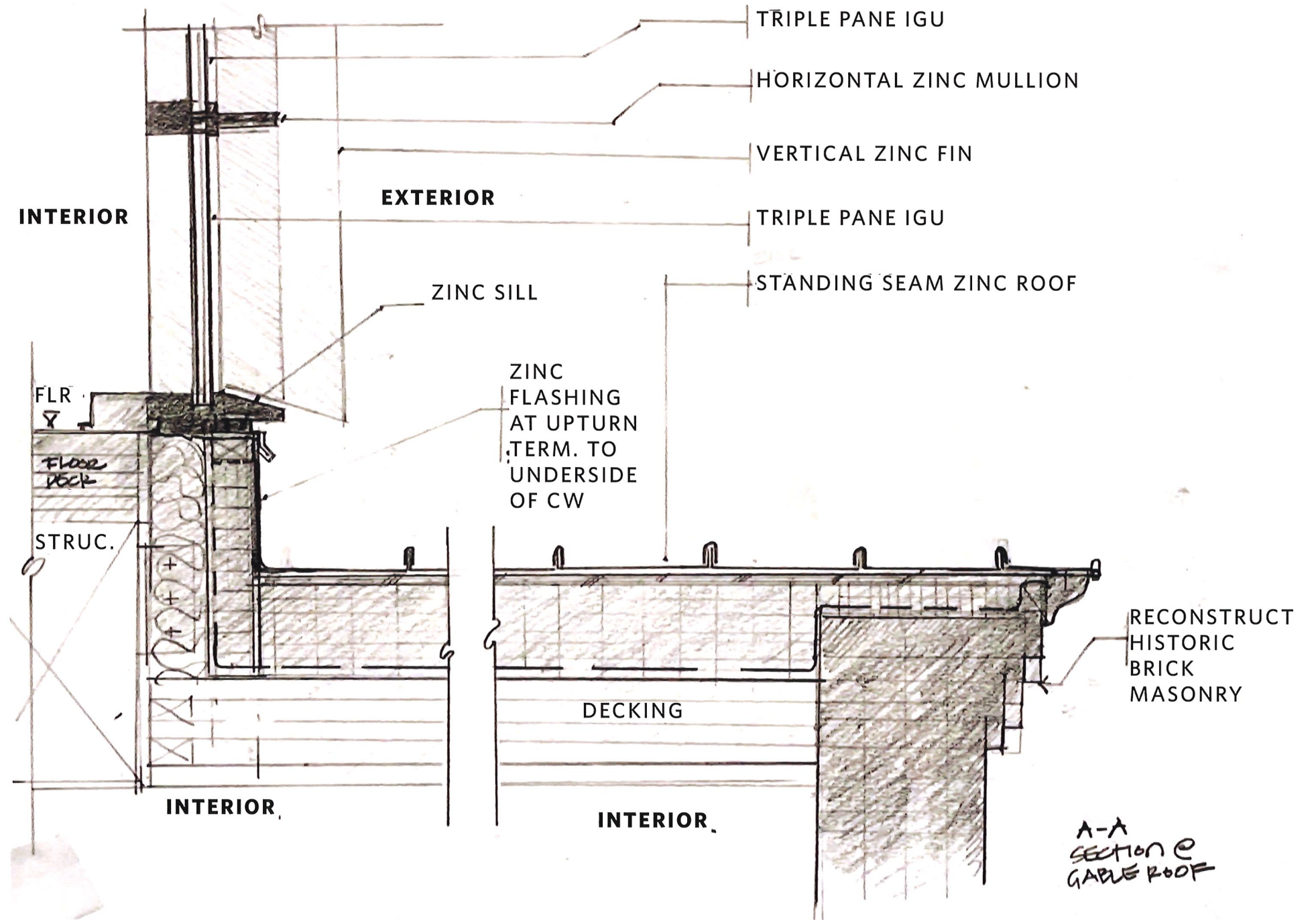


GABLE ROOF PARTIAL ELEVATION

GABLE ROOF DETAIL



GABLE ROOF RENDER

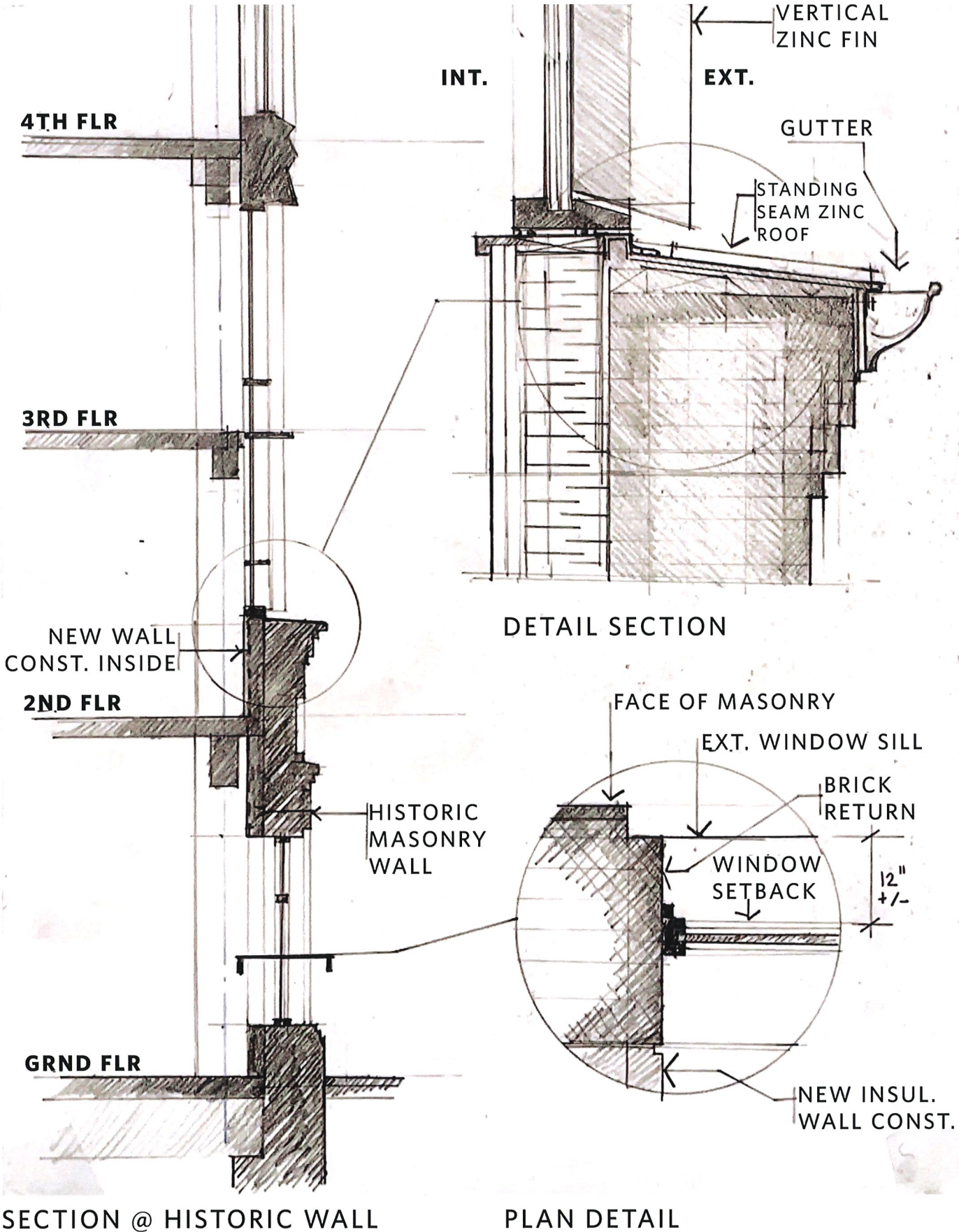


SECTION @ GABLE ROOF

HISTORIC WALL DETAIL

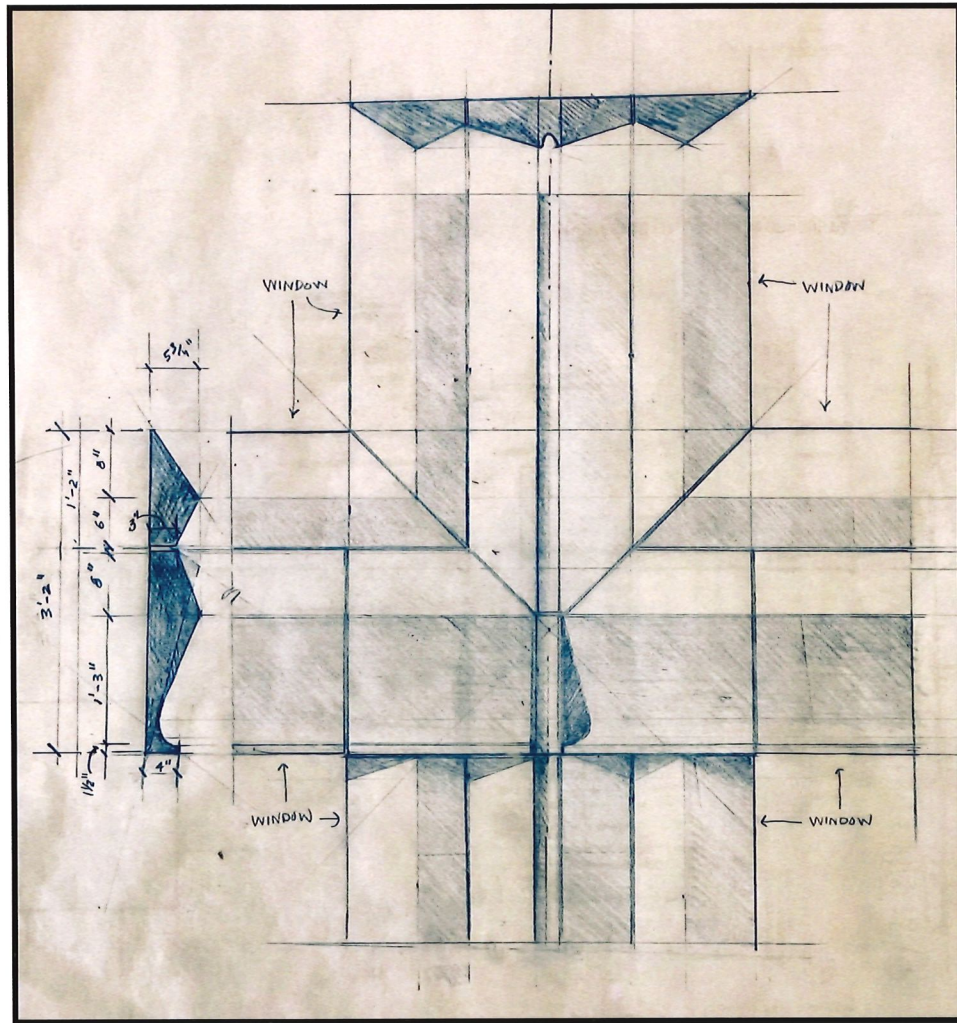


HISTORIC WALL RENDER

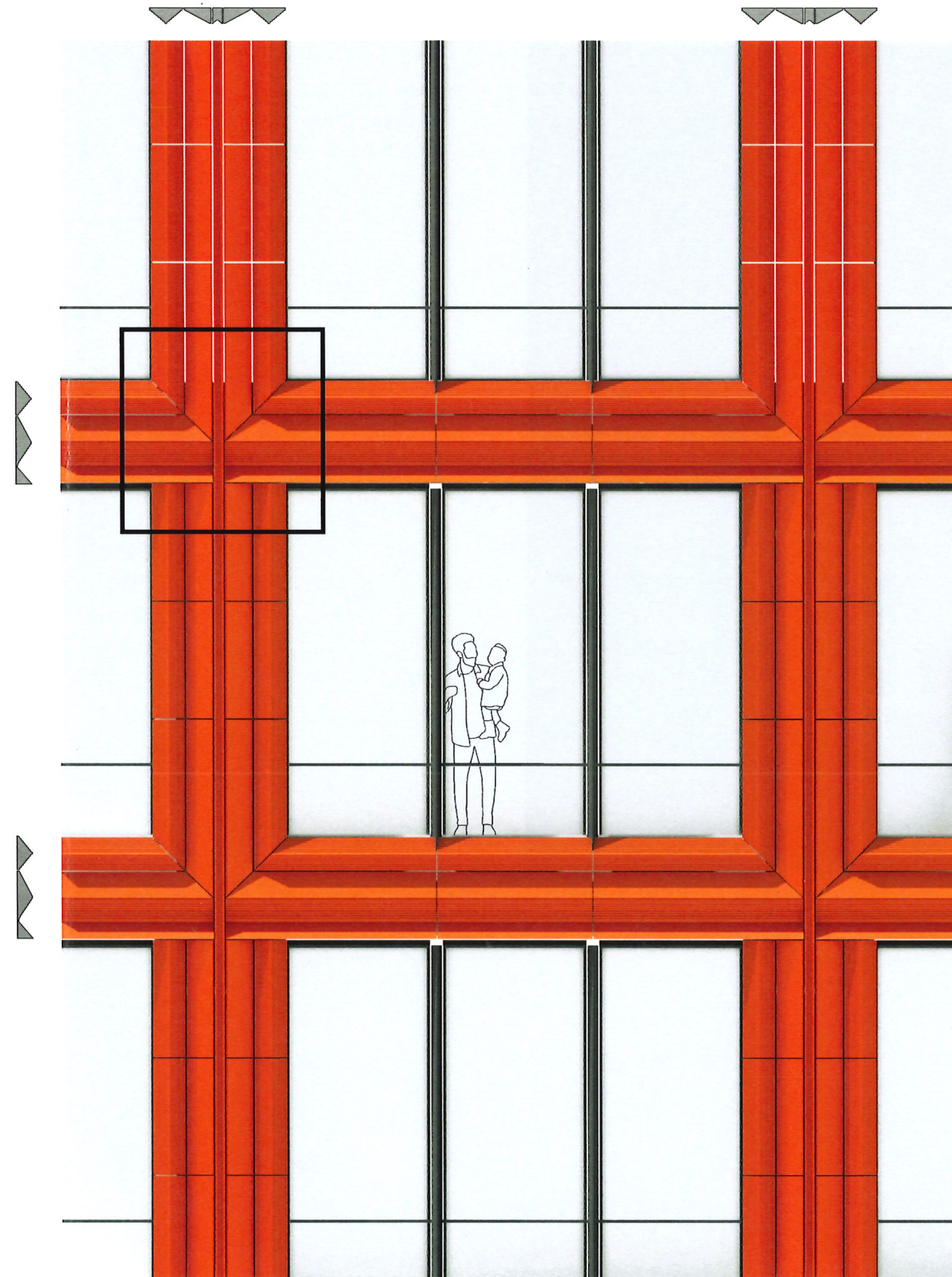


TERRACOTTA

TILE STUDIES



ELEVATION & SECTION SKETCH



ELEVATION RENDER