

Area Four/The Port

Charles Sullivan

Cambridge Historical Commission

January 19, 2016



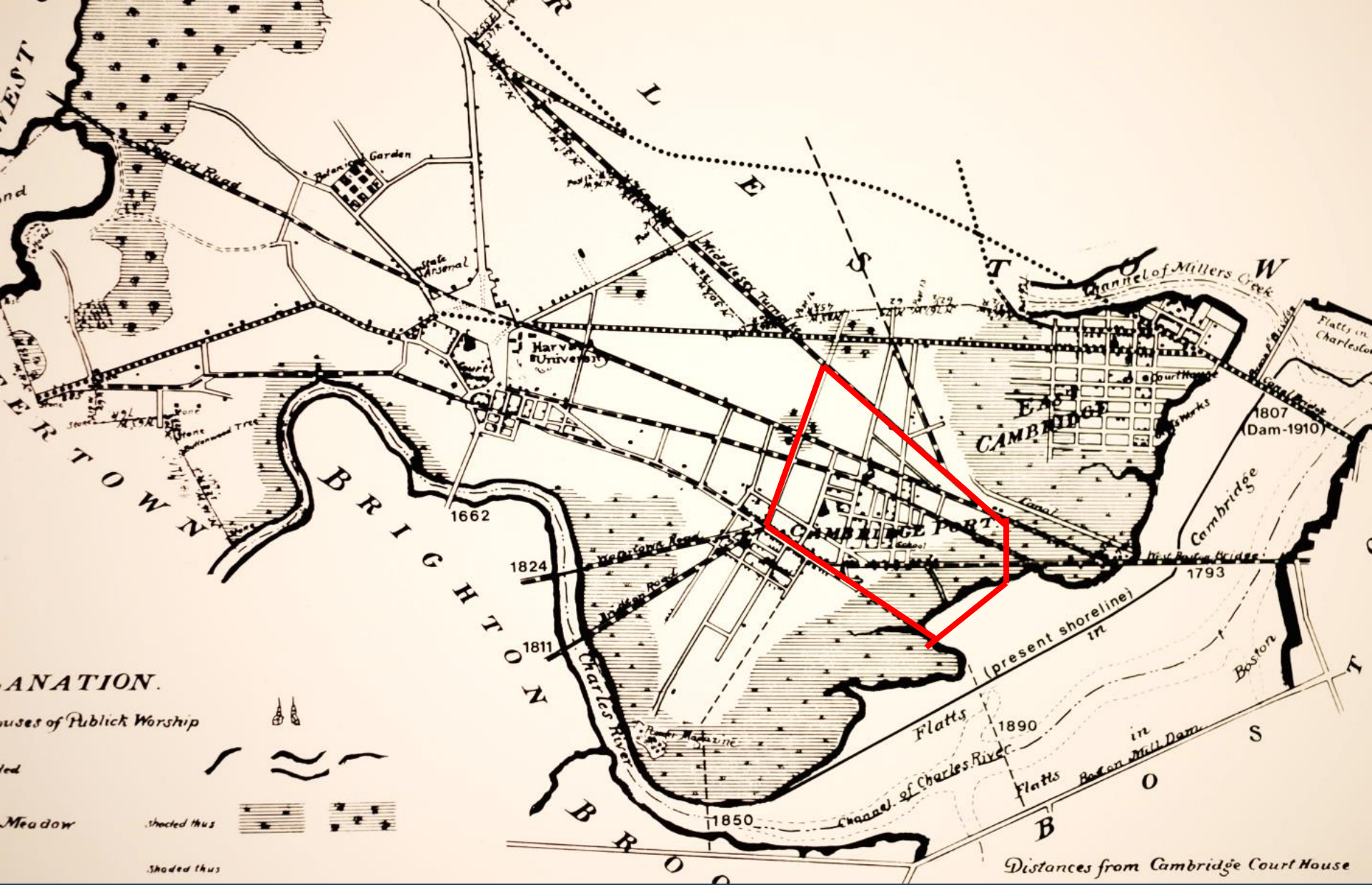
Cambridge and Boston, ca. 1635



Cambridge in the Siege of Boston, 1775



West Boston Bridge, ca. 1795



Cambridge in 1830
with turnpikes leading to the West Boston and Craigie bridges



U.S. Coast Survey, 1847

sacred music, which was pursued with great zeal and spirit, good judgment and taste; and it was resolved, that as "music was the handmaid to devotion, no piece should be admitted, but of a character suited to the solemnity of the sanctuary, and to that holiness which becometh the house of God forever."

We were now terribly annoyed by the tide-waters, which would break through the dikes, or overflow sufficiently deep for a boat to ride with ease. Cellars and kitchens full, and every thing afloat. At one time the waters were four feet deep in the first story. The waters at the ebbing of the tide, would return as suddenly as they came, but the dampness would remain for a long time. Thinking our health would suffer if we remained, we determined to remove as quickly as possible, but upon making inquiry, found it was impossible to obtain a

house, with the exception of the Phipps or Boardman house; and that being such an old castle, we thought it would not be advisable. But, upon reflection, as the bridge would soon be built, and, in the rear, a road cut through to the colleges, it would be far more pleasant and convenient; we therefore secured it.

On February 2nd, 1809, the Cambridgeport Meeting-house Corporation conveyed by agreement and indenture, the meeting-house, organ, bell, etc., to the Cambridgeport parish, at which time the corporation became extinct. From the time of the dedication of the house, in 1807, to 1809, divine service had been constantly performed, at the expense of the corporation. In March, an embargo was issued by authority, prohibiting all vessels from leaving the port. "Hard times" was now the universal cry.



Margaret Fuller House, 71 Cherry Street, 1806



U.S. Coast Survey, 1847

-  Boardman house, 1801
-  Fuller house, 1806



H.F. Walling
Map of
Cambridge
1854

★ Town and
city hall,
1832-1854



THE NEW CAMBRIDGE BRIDGE, BOSTON, MASS.

[For description, see page 11.]

The second West Boston Bridge, 1855

Kendall Square in the distance



Low tide near Kendall Square, 1898



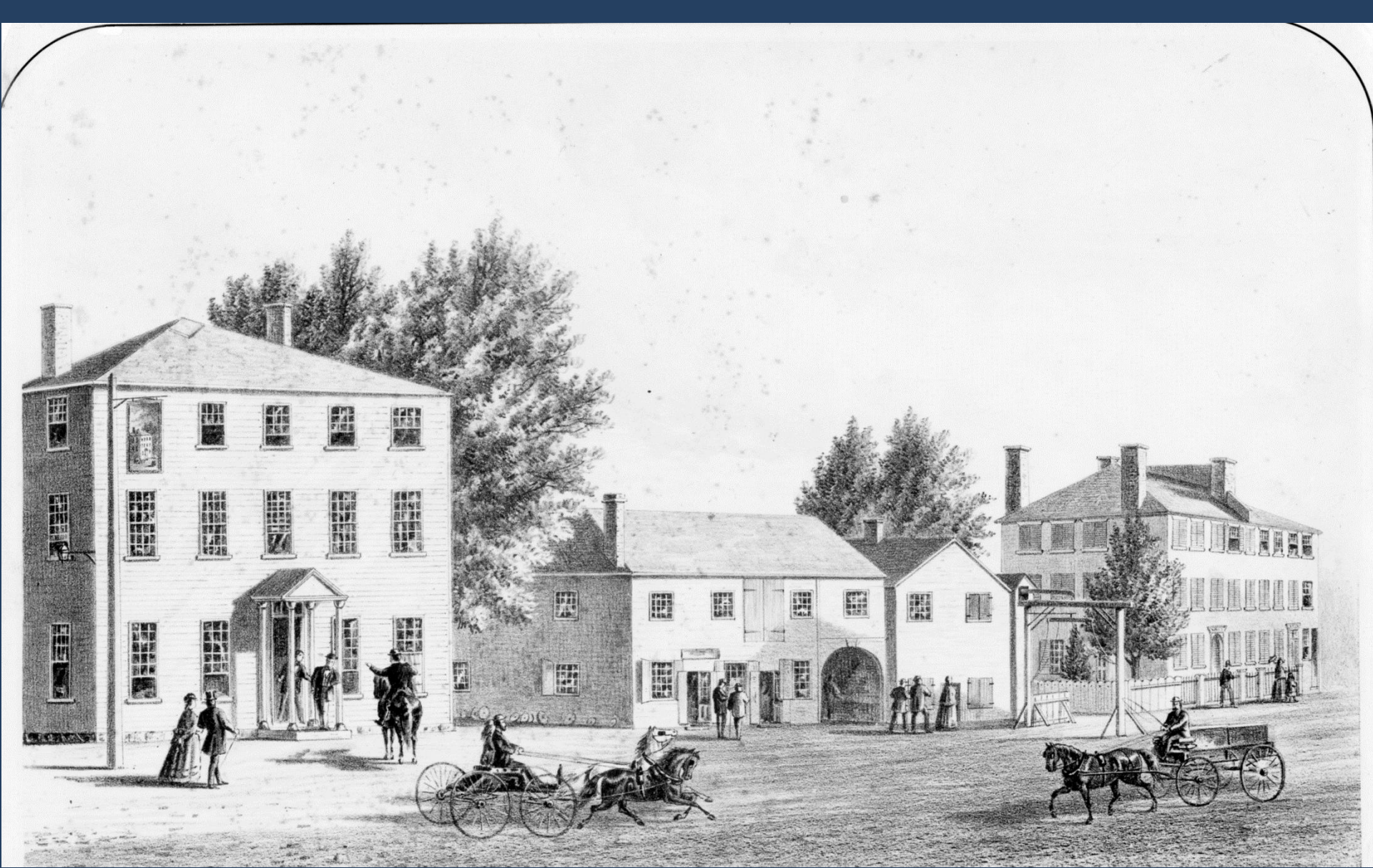
Broad Canal, ca. 1895



BROAD CANAL ABOVE RAILROAD BRIDGE, LOW WATER.

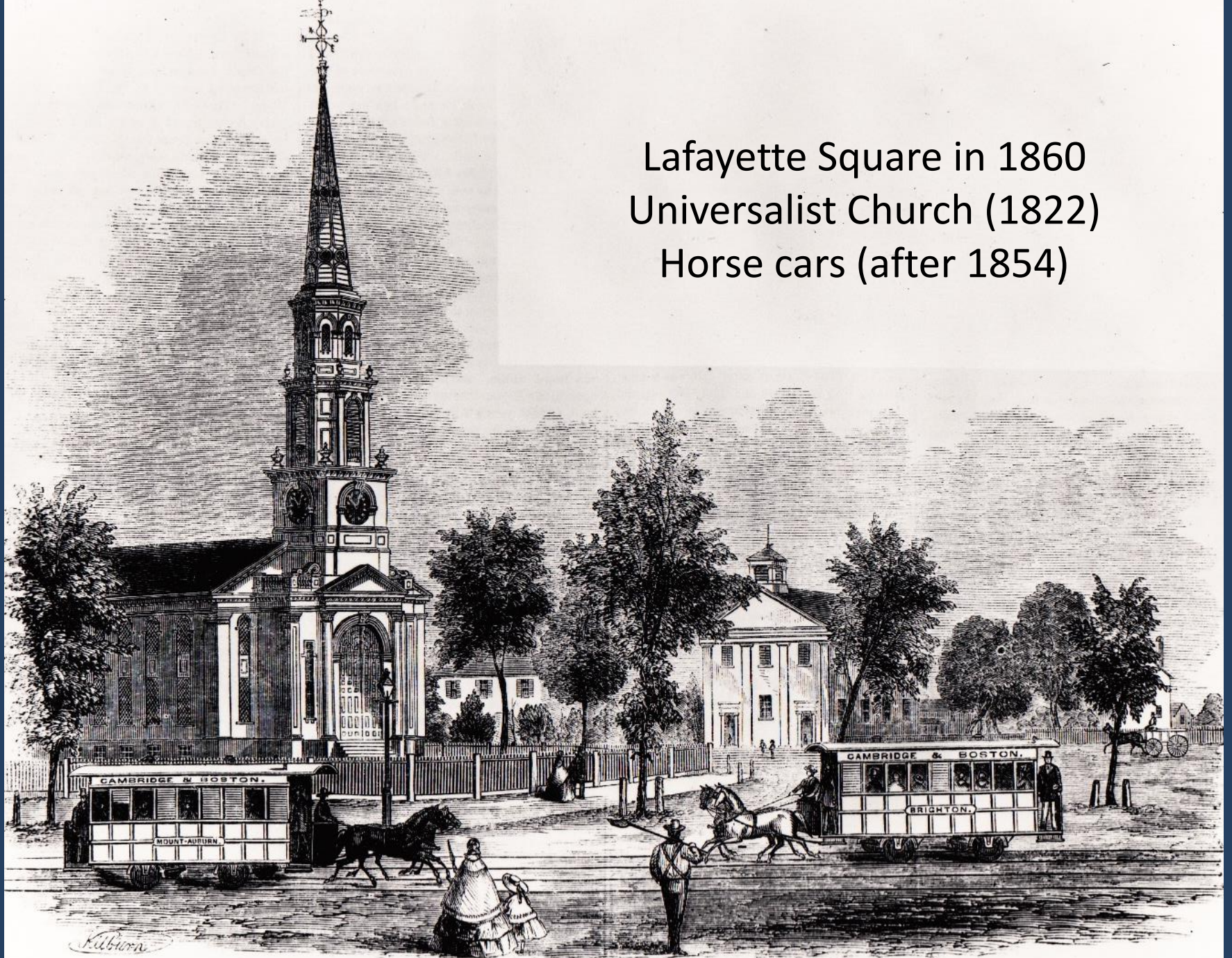


Kendall Square, ca. 1900

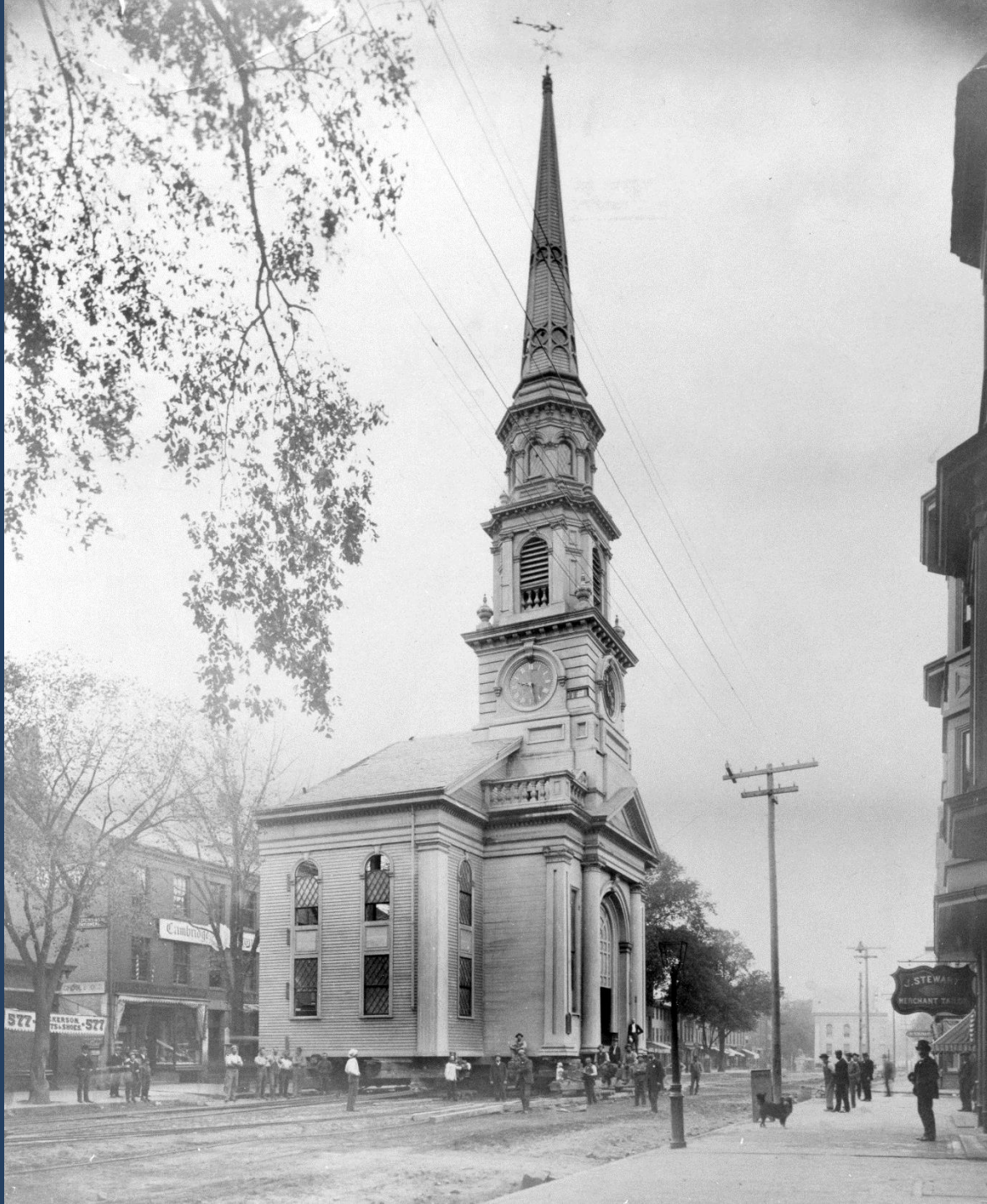


Hovey Tavern (1802), Main Street at Windsor Street

Lafayette Square in 1860
Universalist Church (1822)
Horse cars (after 1854)



THE NEW UNIVERSALIST CHURCH AT CAMBRIDGEPORT, MASSACHUSETTS.



Universalist Church
on the move to
8 Inman Street
1888

4532



Moller Building, Junct. Mass. Av. and Main St

Mar 18. 10

4532



Broadway Common (Sennott Park), ca. 1890



Thurston, Hall & Co. bakery, Elm Street
(future site of Fletcher School)

demand this.

The entrance into our city from Boston over Main Street, requires that some improvement should be made. I refer to that portion on the northerly side from the junction of Harvard to the first house west of **Washington Street**. This territory should be raised and properly graded to a height of not less than three feet, after which, by the occupancy of buildings with basements, this land so eligible might be reclaimed, and would become a paying investment, and the city be relieved from what has been for so many years an unsightly and discouraging tract, and a source of filth and disease to the neighborhood. In a sanitary point of view alone, some action should be taken, and the expense paid by the property thus benefited. In this connection, I would call your attention to the expediency of planting shade trees on both

Mayor's address
to the City Council
Cambridge Chronicle
Jan. 11, 1868

WASHINGTON STREET DISTRICT FILLED TO GRADE
—EXTENT OF THE IMPROVEMENT—WHAT IT WILL COST THE CITY — FILLING OF THE CAMBRIDGE STREET, COPPERTHWAIT STREET AND FRANKLIN STREET DISTRICTS. — SEWAGE DIVERTED FROM FRESH POND—HEARING ON THE PROPOSED HARBOR WALL.

On Monday last the final settlement was arrived at between the city of Cambridge and Mr. N. C. Munson, contractor, for the work done by filling to **grade** the large area of lowlands in Cambridgeport, known as the Washington Street District. This work was begun a little over a year ago, and has been prosecuted with energy since that time. From four to

TEN TRAINS A DAY

Have been emptied of their gravel on the district. The filling was brought from Rice's station, just over the edge of the town of Weston, on the Boston and Albany Railroad, and the price paid was 89½ cents per square yard. It has taken a little over 160,000 yards of earth to complete the work, and the total amount of Mr. Munson's bill is \$145,961.66. The labor has been a large one, the peculiar manner in which the gravel had to be distributed making it costly and slow of accomplishment. In many cases the laborers were obliged to "spoon" the earth away under buildings, and much of it had to be carried long distances in wheelbarrows. The cost of

SEWER IMPROVEMENTS

Chronicle,
Oct. 18, 1873



The Port in 1877



35, 37, and 41 Clark Street, 1901



Clark and School streets, looking east, 1901



Clark Street Place,
1901

standpoint of sanitary engineering: containing [carrying—Ed.] one-third of stock-ot be proper pur-

f es-safe-icient be-and sani-possible ef-plant, ment, ident

It e flit ad-bac-e es-dition (line) ever serl- result. f the and the dis- only borne The num- an- which

to-that entral point part es it the ulosis capa-

in- borne. Both of these organisms affected by hypochlorite of lime

The writer took levels on adjacent curbs, tracks and in several sewer manholes, and discovered

stu wa sou the ver not rev wa sub pro ist A set els est wr set Ha gin T set A tlex tur cha The set str ina to aga cav the dis F clu tric als ter No Th Da E., Bo fro

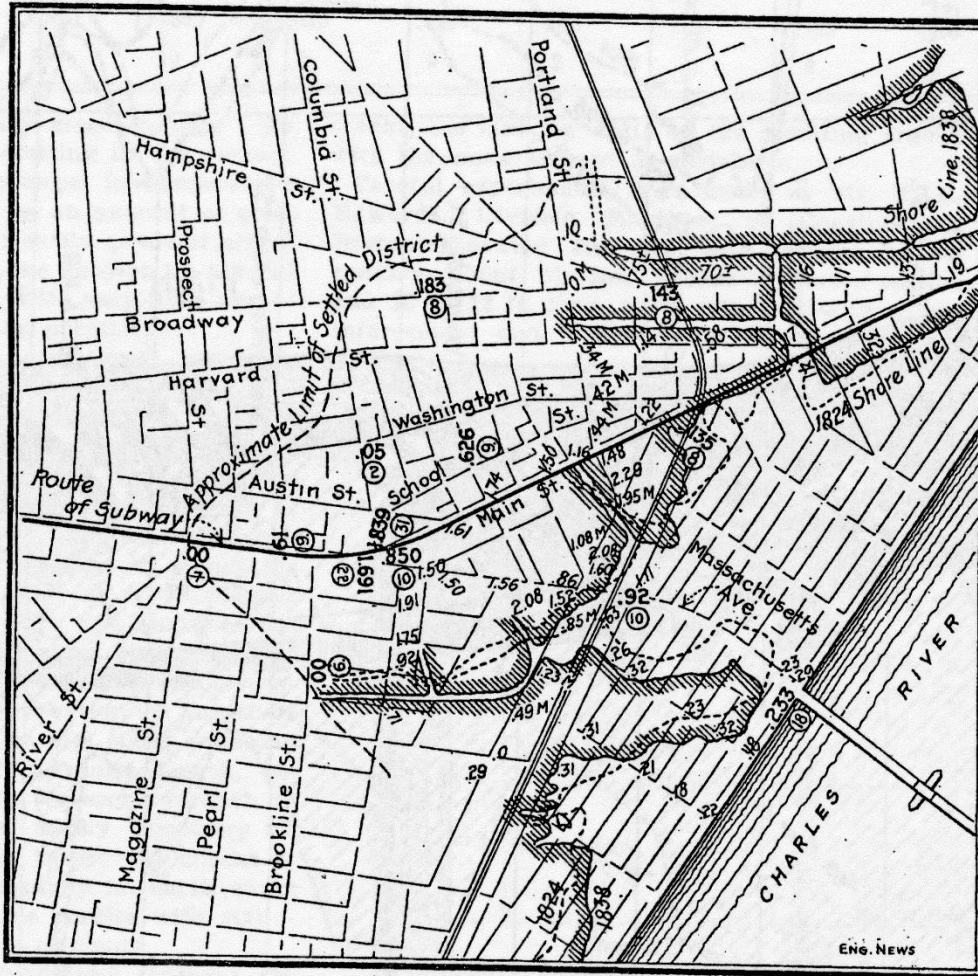


FIG. 1. MAP OF PART OF CAMBRIDGE, MASS., SHOWING REGION OF SUBSIDENCE.

Full shore-line is from map of 1838.

Dotted shore-line is from map of 1824.

Upright figures denote amount of subsidence of benchmarks, in feet. Figures within circles below, where given, are the number of years of observation.

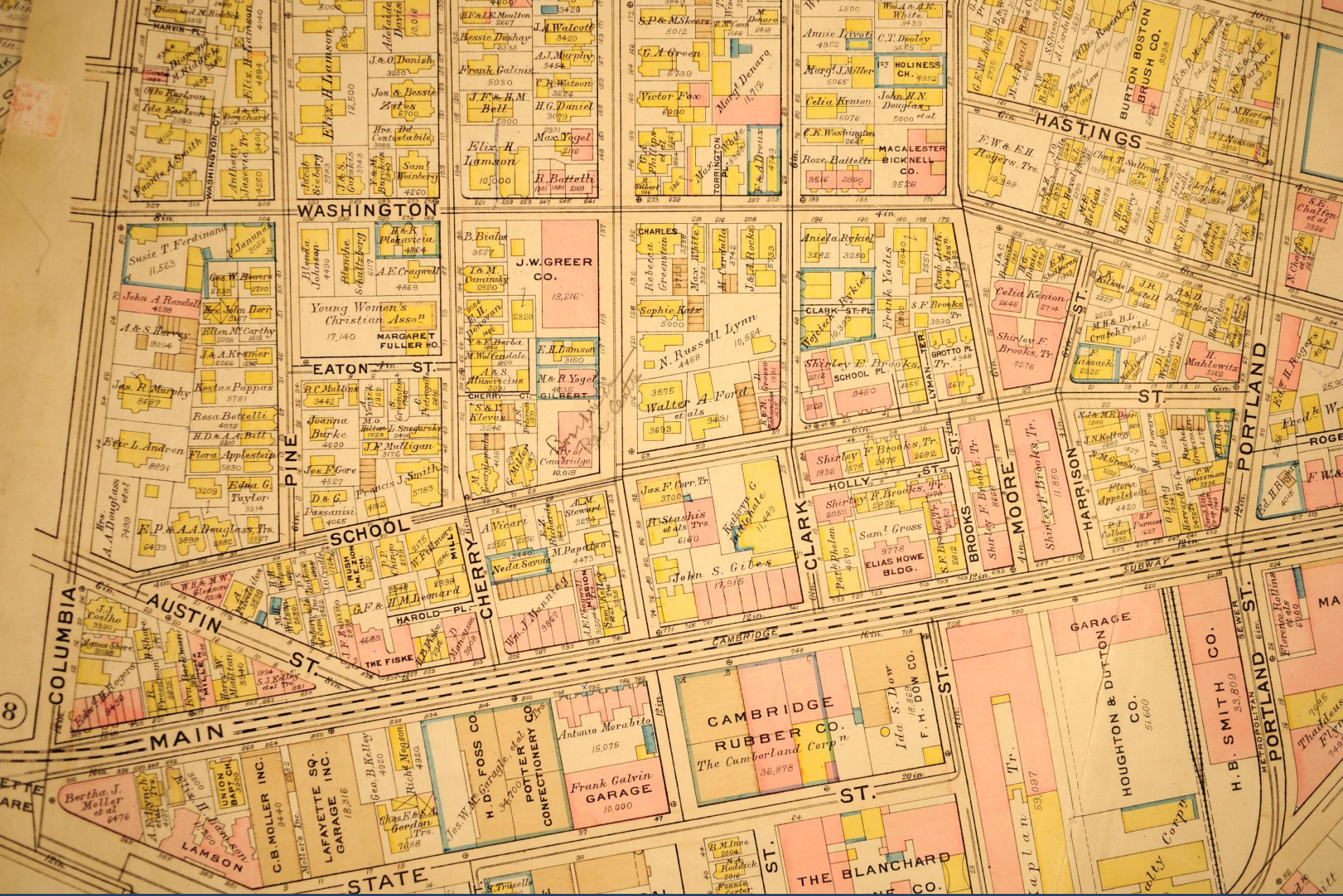
Italic figures denote settlements of sewers, in feet, from date of construction to 1907, when most of the levels were taken. Those followed by M are for Metropolitan sewers.

the fact that the whole district was settling. In the next succeeding few months some 50 miles of

Engineering News,
Sept. 8, 1910



Main Street looking east at Windsor Street, ca. 1920



G.W. Bromley, Atlas of Cambridge, 1930





Grand Junction
corridor, ca. 1948



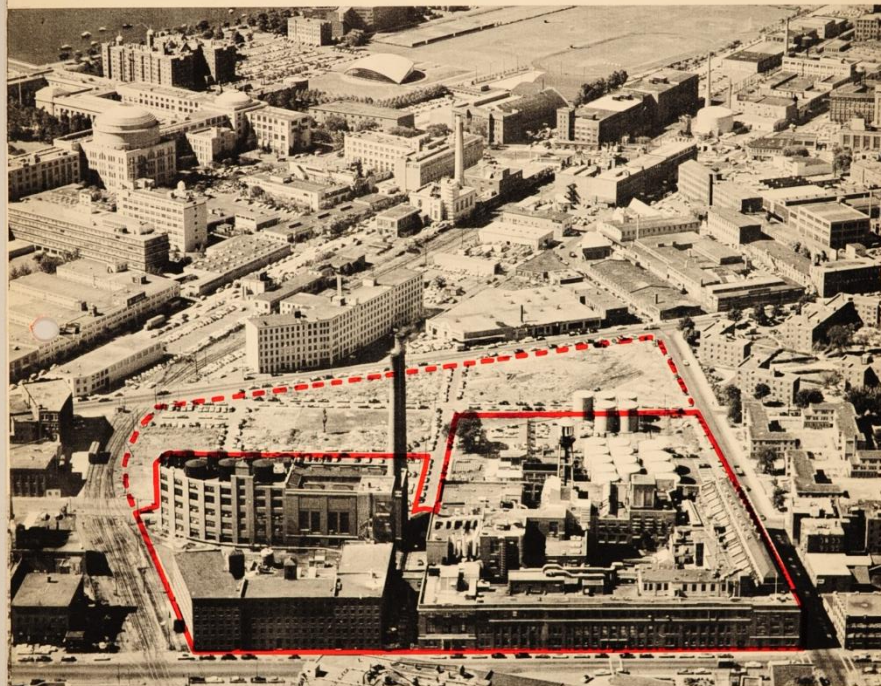




For Sale

**CAMBRIDGE, MASS.
REAL ESTATE OF
LEVER BROS. CO.**

8.4 ACRES PLUS BUILDINGS NEAR RESEARCH ROW and M.I.T.



PLANT of LEVER BROS. CO. is outlined in immediate foreground. At left is B & A Railroad spur track. Cleared area to rear of Lever Bros. property is Cambridge Redevelopment Authority's Rogers Block site of 5 acres. The two properties form an attractive combination of 14 acres in the Research Row—M.I.T. (upper left corner) section of Cambridge. Dome of M.I.T. building, and Charles River are seen in upper left corner.

Buildings: 383,235 sq. ft. floor space
in various buildings

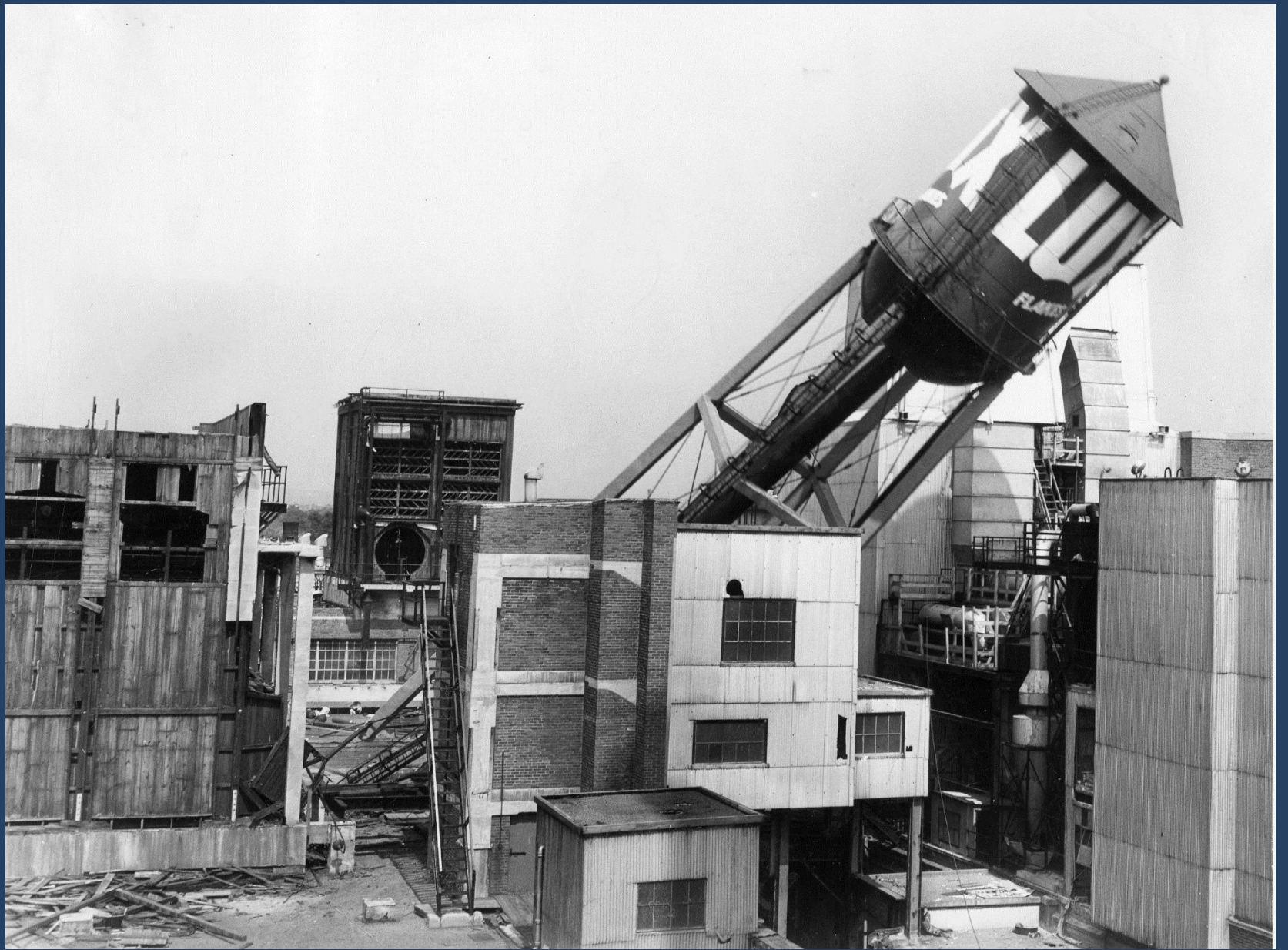
Land: 367,000 sq. ft. (8.4 acres)



Exclusive Agents:

R. M. BRADLEY & CO., INC.

250 Boylston St., Boston 16, Mass.





Tech Square, 1961-1965



Draper Labs, 1974-76

Catalog
of
**Quality
Radio
Apparatus**

*Scientifically Designed
by
Radio Engineers*

Manufactured by the

GENERAL RADIO Co
Cambridge, Mass., U.S.A.

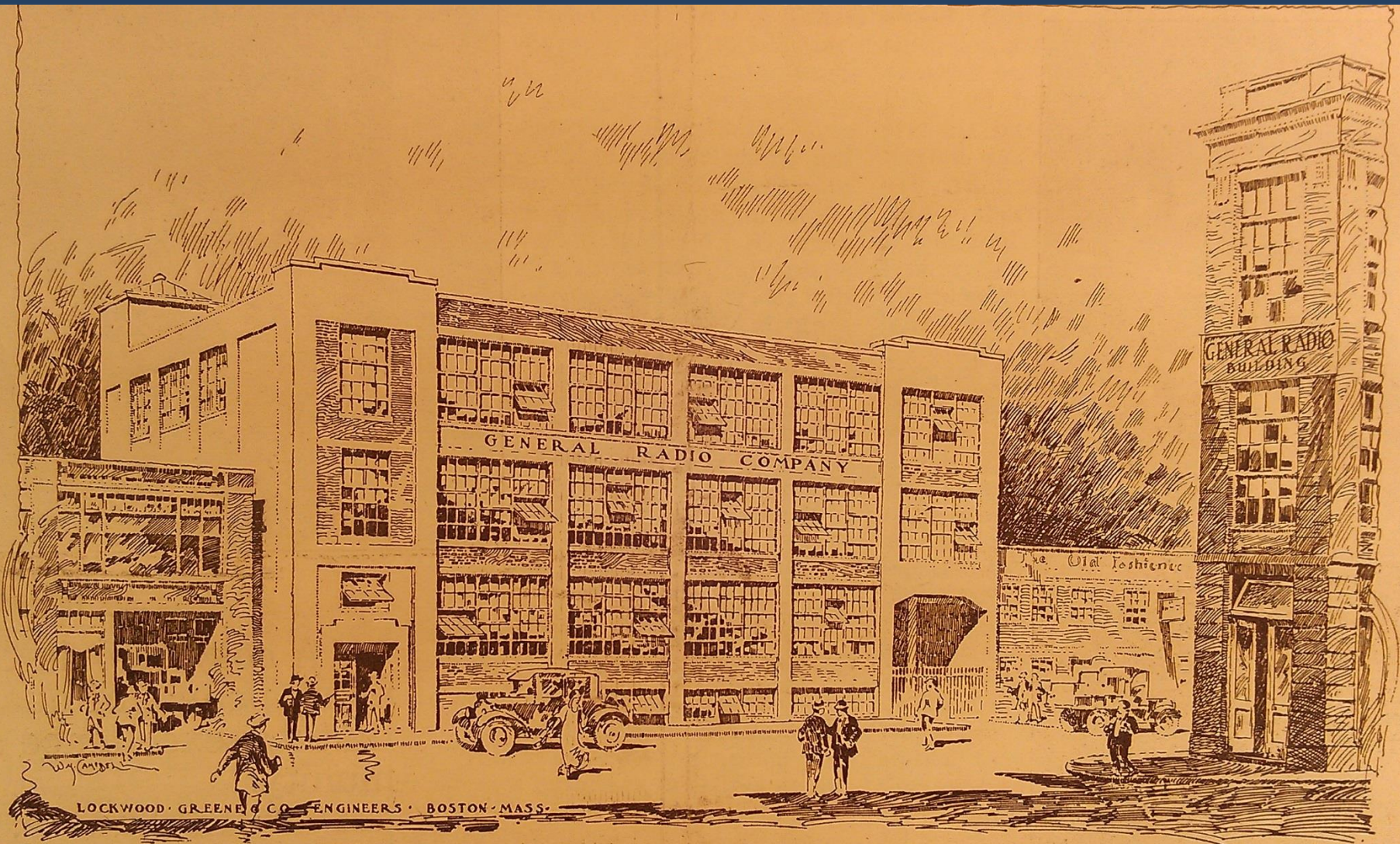


GENERAL RADIO Co



Cambridge, Mass.
U.S.A.

H TYPE 247-F1 50 500 MUF
PANEL MOUNTING
VARIABLE AIR CONDENSER
WITH VARIABLE ADJUSTMENT
PRICE \$5.00



VIEW OF THE NEW GENERAL RADIO BUILDING



FACTORIES: MAIN AND ALBANY STREETS, CAMBRIDGE



SQUIRREL BRAND
REG. U.S. PAT. OFF.

THE SQUIRREL BRAND CO.
CAMBRIDGE, MASS.

SQUIRREL BRAND

NUT CARAMELS
PEANUT BUTTER



PEANUT BARS
SALTED NUTS

SALTED PEANUTS

THE KEATING CHURCH PRESS N.Y. & BOSTON



LYSANDER KEMP & SONS

Manufacturers of

FAMILY and SHIPPING SOAPS

**Hotel and Res-
taurant Trade
A Specialty**

Washing Powder and
Natural Soap Chips.

Dealers in Soap Stocks

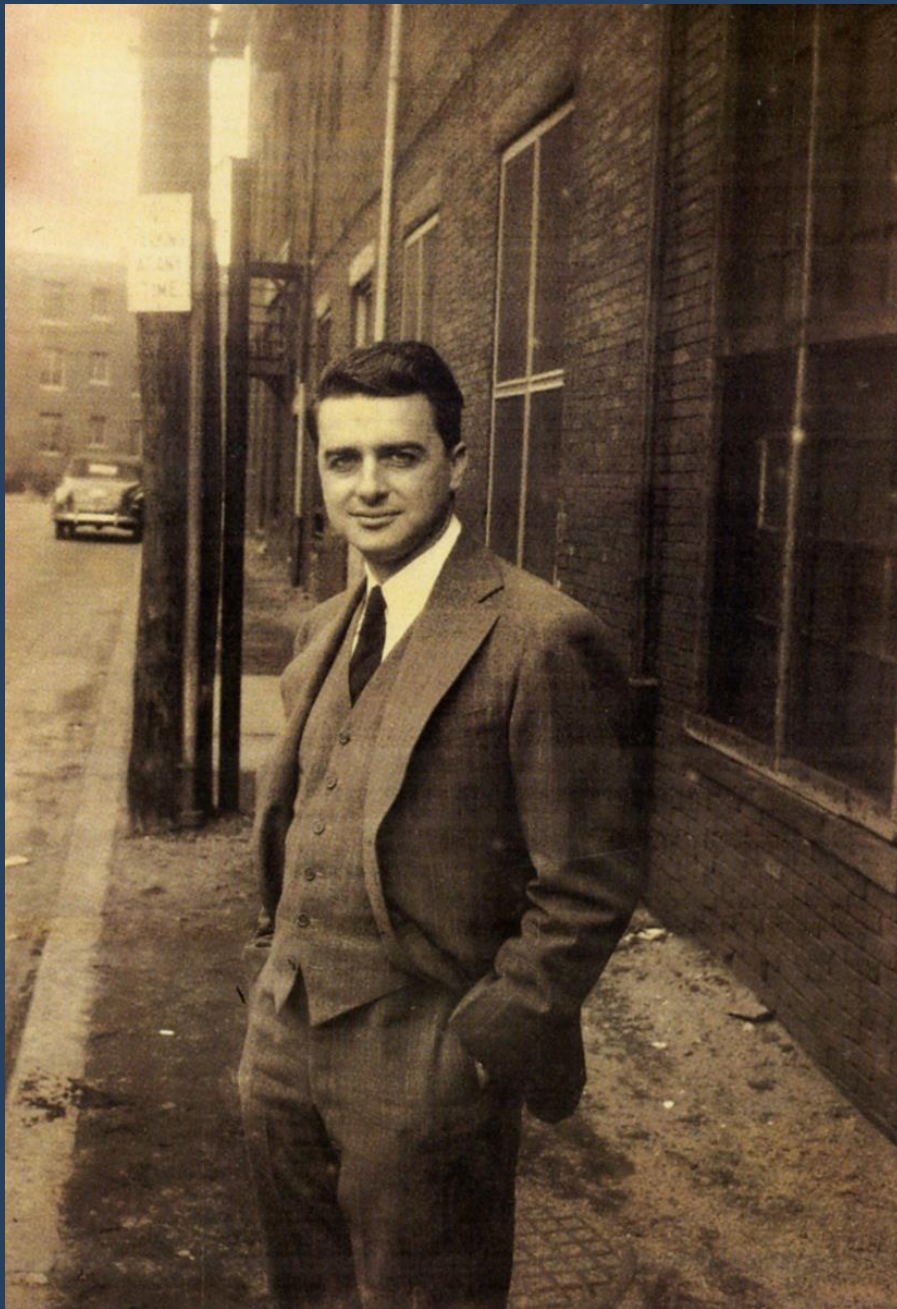
**Factory, corner Broad-
way and Davis Street
Cambridgeport**

HORACE G. KEMP JAS. H. KEMP

Telephone Connection







Edward Land,
photographed
on Osborn Street,
ca. 1948



COLUMBIA ST.

LAFAYETTE SQUARE

MASSACHUSETTS AVE.

CENTRAL SQUARE

INNER BELT (I-695)

BROOKLINE ST.



LEGEND
Brookline - Elm St. Route
Cambridge Commiftee Route, Modified



Hear ye.
Hear ye.
Morgan's enemies has
taken your HOMES!

RIGHTS
NOT ROADS
for the
CAMBRIDGE
TAXPAYERS

Hear ye!
Hear ye!
Gifts of God,
Scam, Broklyne,
& Hoon, of our
New National Bird.

The people of Cambridge, Franklin & Merrimack, when they put money in the 1958 BALLOTING, to build our Merrimack and Danvers, that NEWSCA will have a NEW NATIONAL BIRD!

DON'T LET THIS
HAPPEN
TO OUR HOMES

CAMBRIDGE IS A CITY
NOT A HIGHWAY