

# KINGSLEY PARK SITE IMPROVEMENTS



**PUBLIC MEETING #5**

March 28, 2012

# Agenda

- Introductions
- Schedule of Activities
- Design Development Plan
- Project Phasing
- Phase 1: Site Improvements
- Discovery Area Opportunities
- Next Steps

# Schedule of Activities

- September – November 2011: Site Inventory and Survey
- December 2011: Public Meeting #1
- January to April 2012: Schematic Design and Meetings with City Departments
- April 2012: Public Meeting #2
- June 2012: Public Meeting #3
- September 2012: Public Meeting #4 and Site Walk

# Schedule of Activities

- October to December 2012: Design Development and Cost Estimate
- December 2012 to February 2013: Meetings with City Staff
- **March 28, 2013: Public Meeting #5**
- **April 1, 2013: Public Site Walk**
- Spring/Summer 2013: Permitting and Construction Documents Phase 1

# Vision Statement

*“...the preservation of water quality, recreational open spaces, natural green spaces, wildlife habitat, and a refuge from hectic urban life...”*

Fresh Pond Master Plan

2000

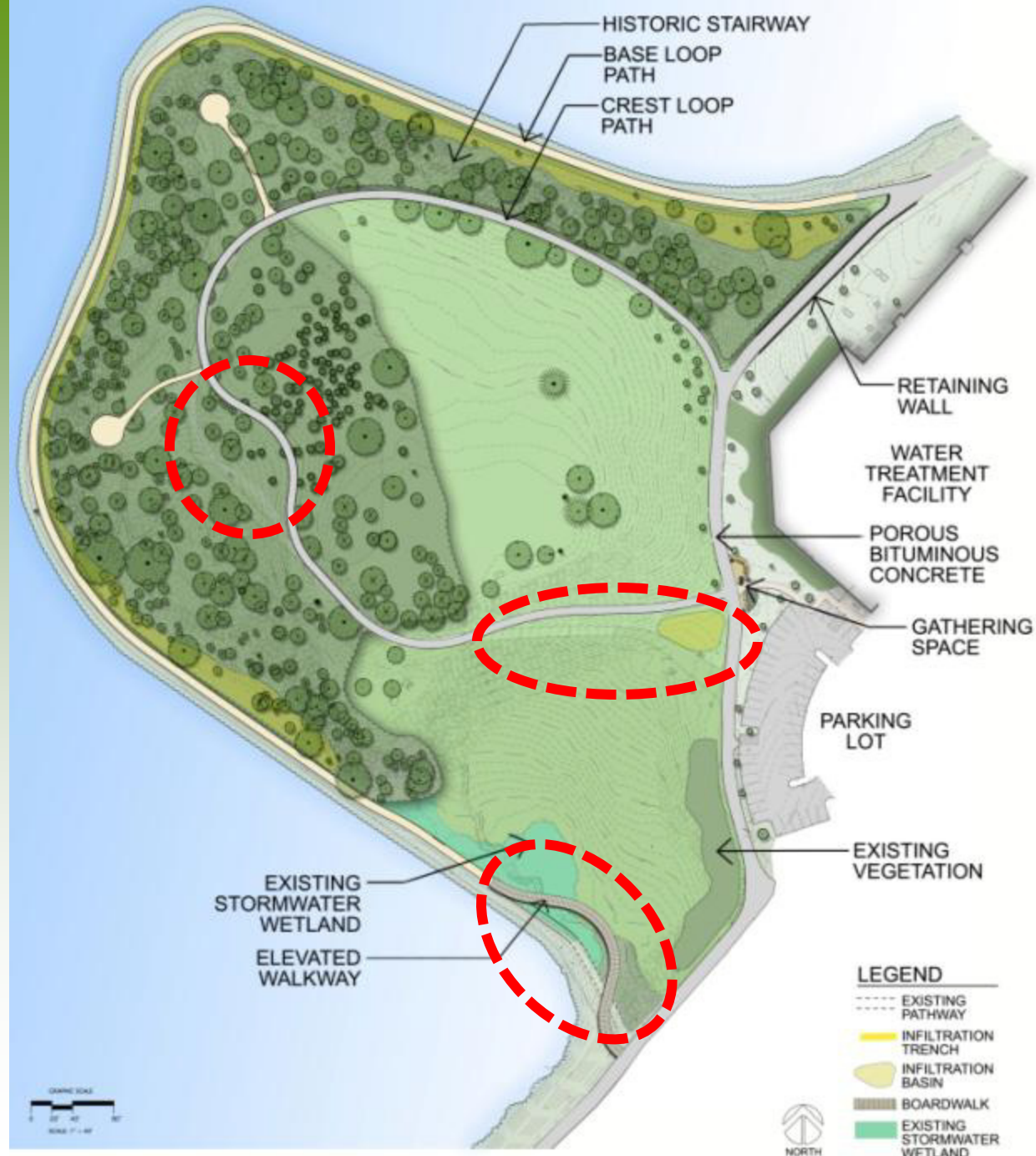
# Site Plan

DRAINAGE  
IMPROVEMENTS

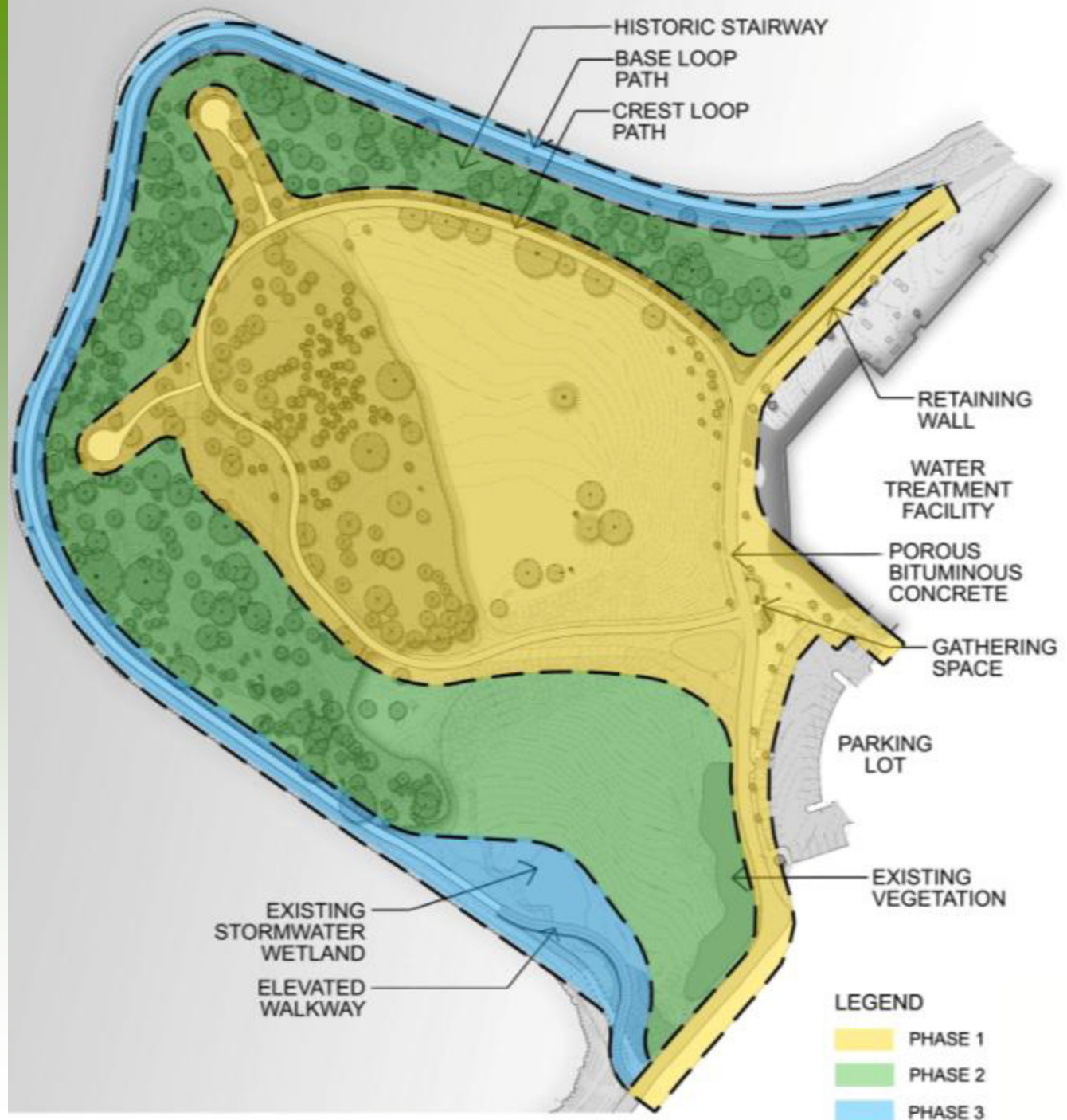
LANDSCAPE  
RESTORATION

COMPLIANT  
PATHWAYS

DISCOVERY  
ZONES

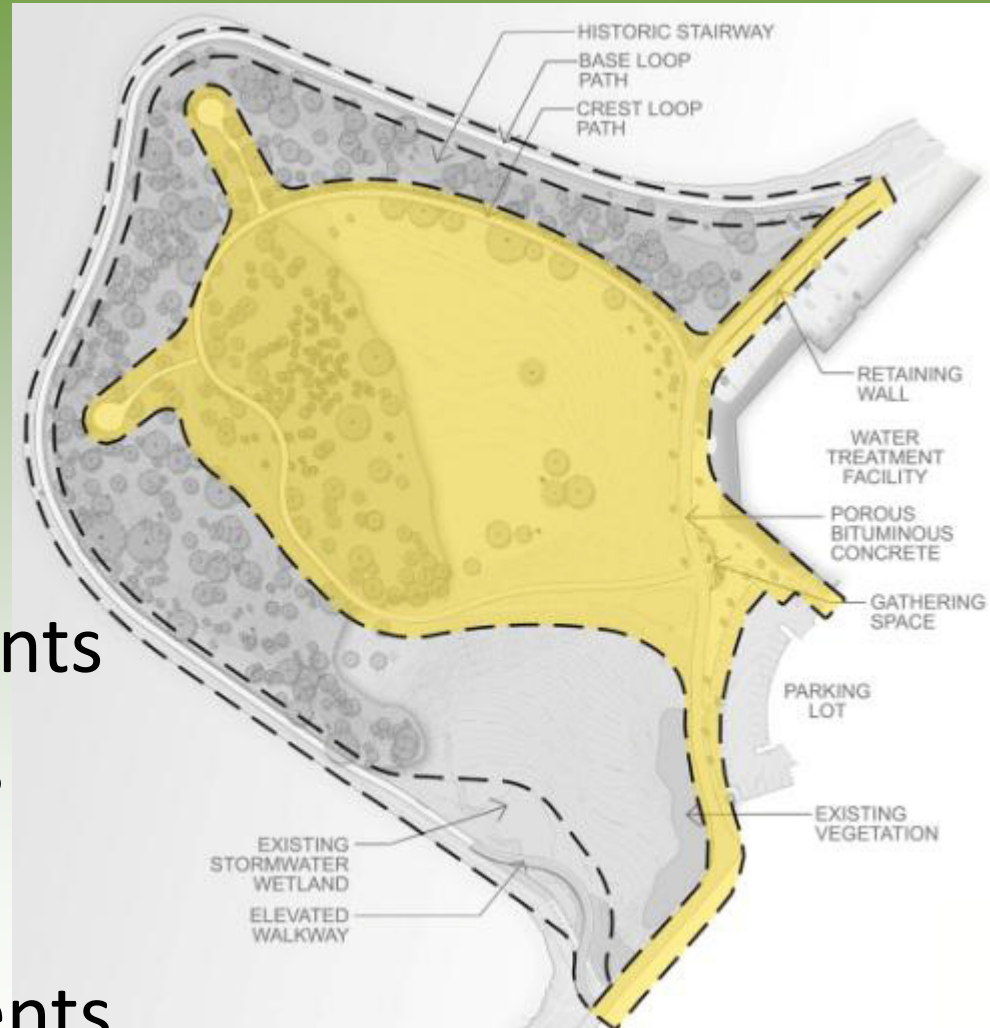


# Project Phasing



# Phase 1: Pathway Improvements

- Perimeter Road
- Crest Loop Path
- Gathering Space
- Overlook Restoration
- Discovery Zones
- Drainage Improvements
- Restoration Plantings
- Turf Restoration
- Irrigation Improvements





# Phase 2: Landscape Restoration

- Invasive Species Management
- Slope Restoration
- Restoration Plantings
- Turf Restoration
- Discovery Zones
- Historic Stairway Restoration



# Phase 3: Base Loop Path

- Path Resurfacing
- Raised Walkway
- Restoration Plantings
- Drainage Improvements



# Project Phasing: Anticipated Construction Schedule

- Phase 1: Construction Begins  
Summer 2014
- Phase 2: 2015 - 2016
- Phase 3: 2016 - 2017

# Phase 1: Perimeter Road

- ADA Compliance
- Porous Paving
- Drainage Improvements



# Phase 1: Gathering Space



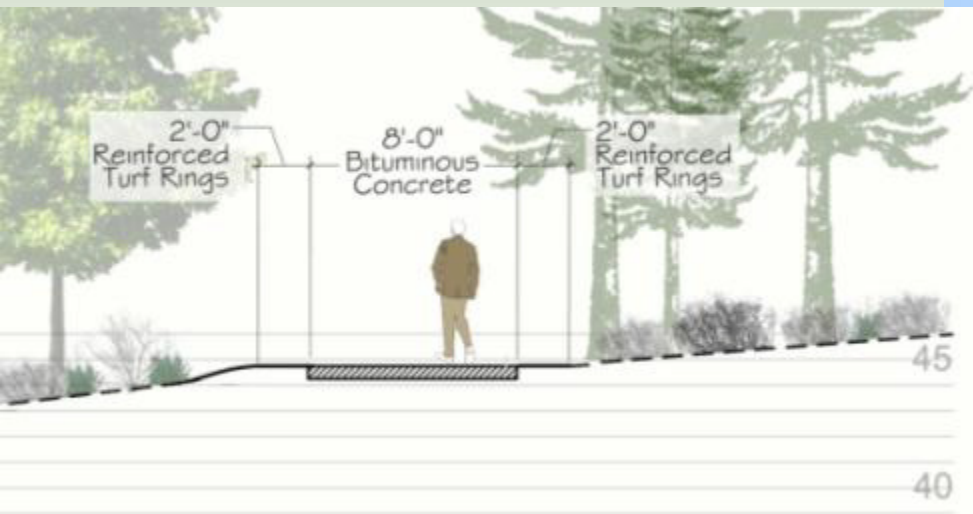
# Phase 1: Gathering Space

- Stabilized Aggregate Surface
- Benches
- Boulders
- Ex. Water Fountain
- Signage
- Bike Racks
- Trash Compactor



# Phase 1: Crest Loop Path

- 8' wide Asphalt Surface w/ Reinforced Turf Shoulder
- Drainage Improvements



# Phase 1: Landscape Restoration

- Phased Approach
- Invasive Species Removal
  - Norway Maple Dominant
- Remove most Heavily Infested Hemlocks
- Remove Hemlocks that Pose Safety Risk





# Phase 1: Landscape Restoration

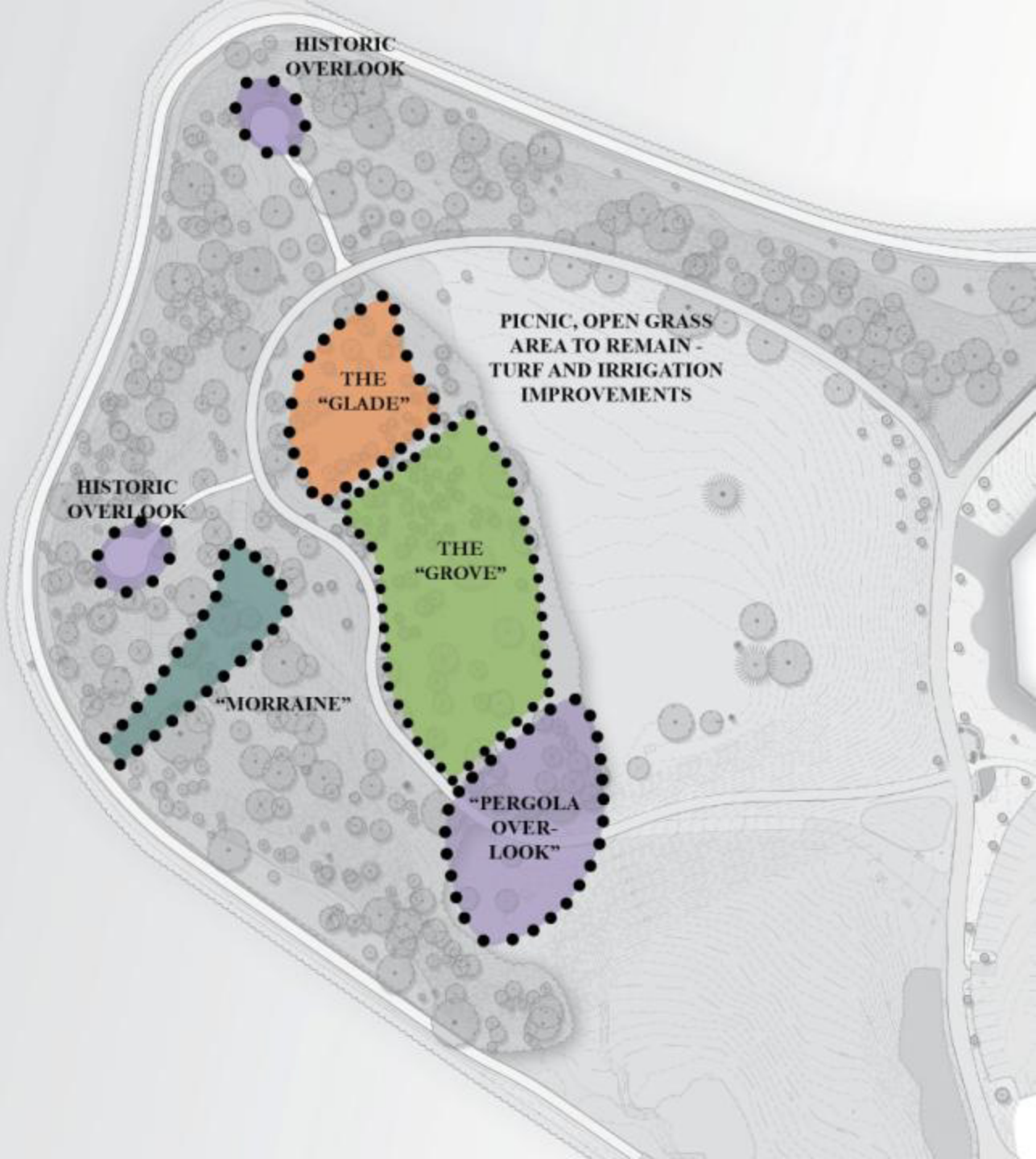
- Evergreen Grove Enhancement Plantings
  - White Pine
  - White or Red Spruce
  - Northern White Cedar
- Maintain Open Understory in Grove
- Integrate with Discovery Areas



# Discovery Areas

- Enhance Existing Unique Features
- Historic Interpretation
- Education
- Exploration
- Enhance and Improve Views
  - Minimize Vertical Elements
- Gathering Spaces
- Private/Contemplative Spaces

# Discovery Areas



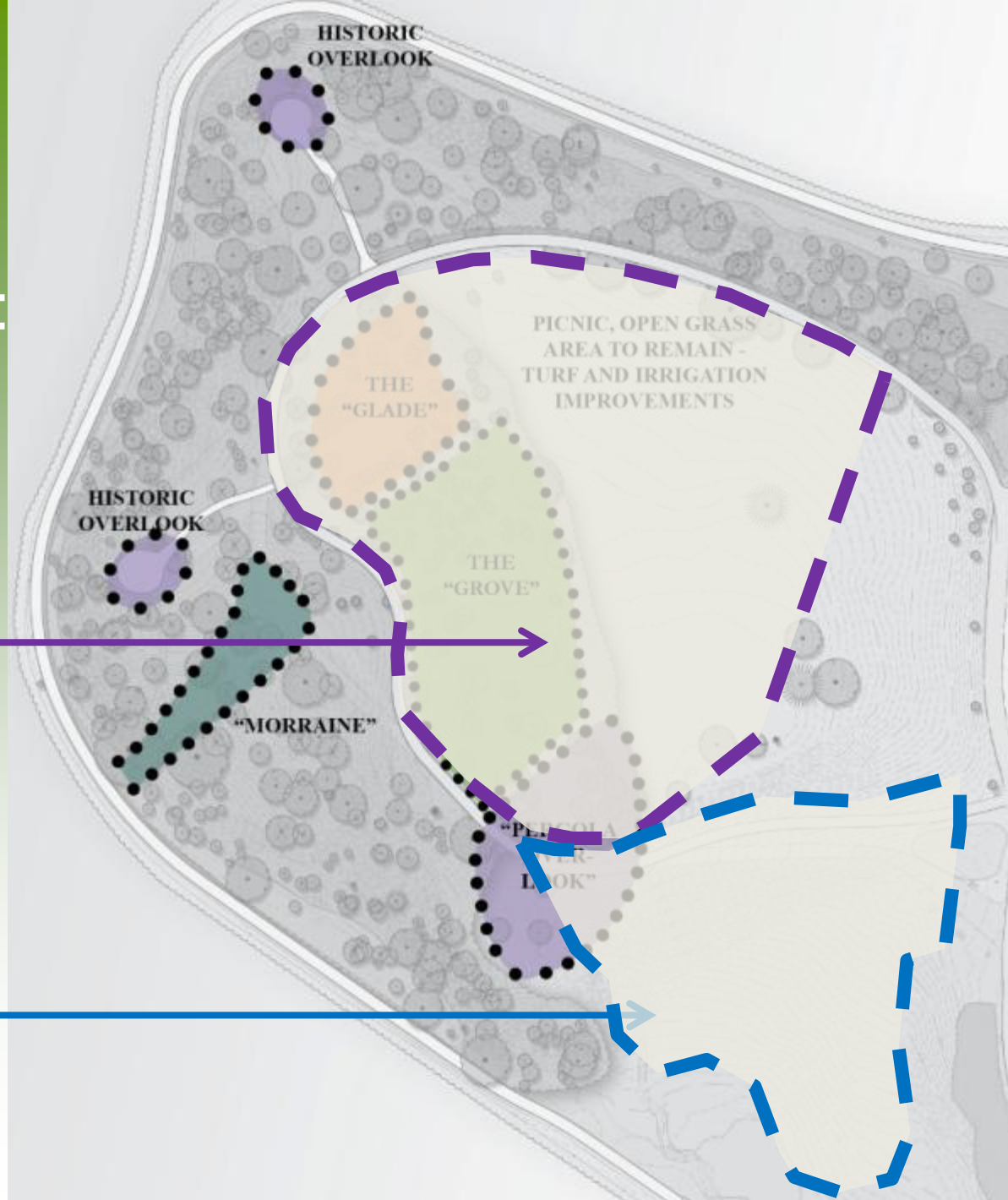
# Discovery Areas

Shared Use

Recommendations:  
May to November

- Dogs on-leash
- Walkers
- Play area
- Picnicking
- No bicycles

- Dogs on- or off-leash
- Walkers
- Others

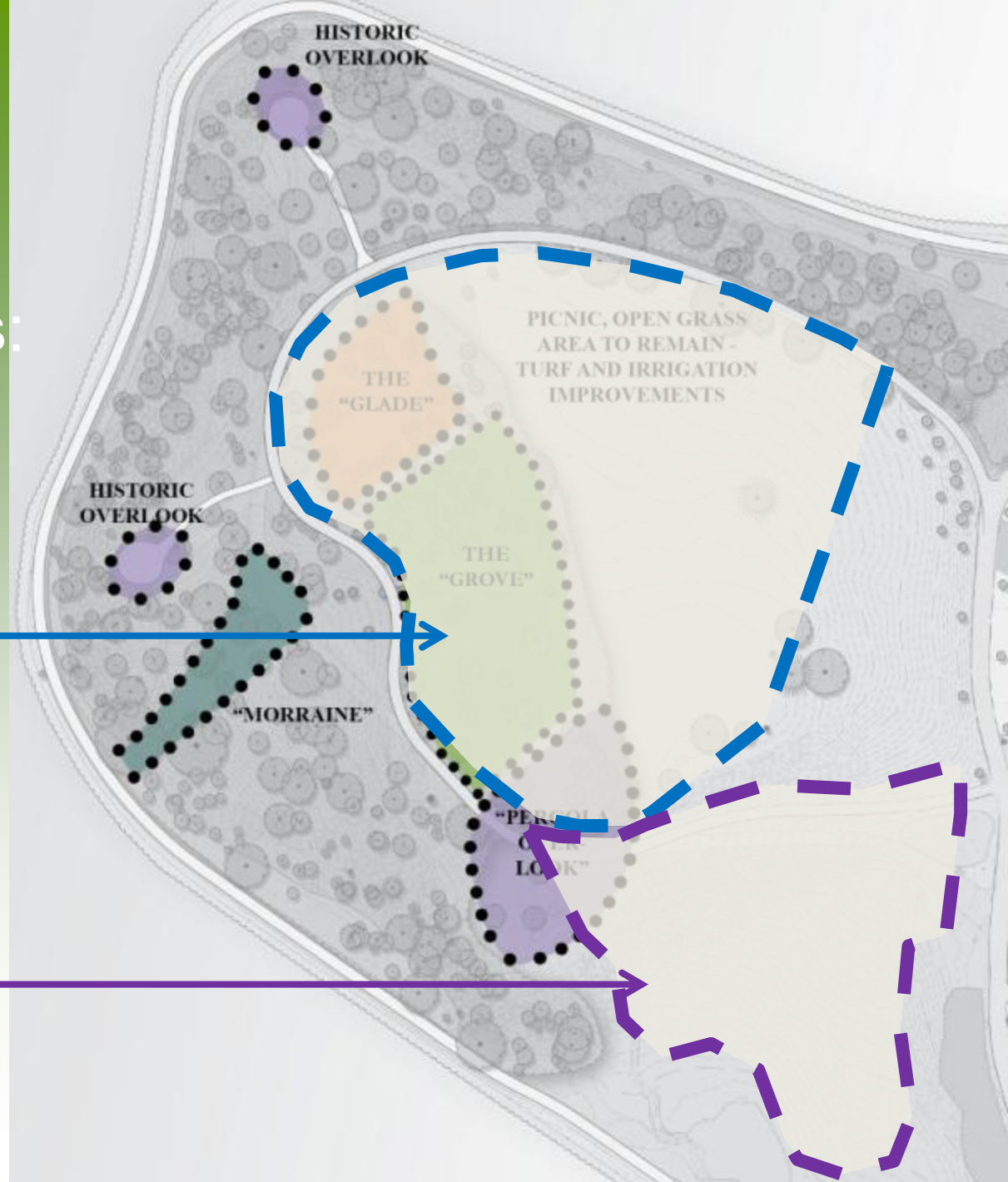


# Discovery Areas

Shared Use  
Recommendations:  
December to April

- Dogs on- or off-leash
- Walkers, Joggers
- Play Area

- Walkers
- Sledders
- No-dog zone



# Discovery Areas: Historic Overlooks



Picnic Grove at Fresh Pond,  
Cambridge, Mass.



# Discovery Areas: Historic Overlooks

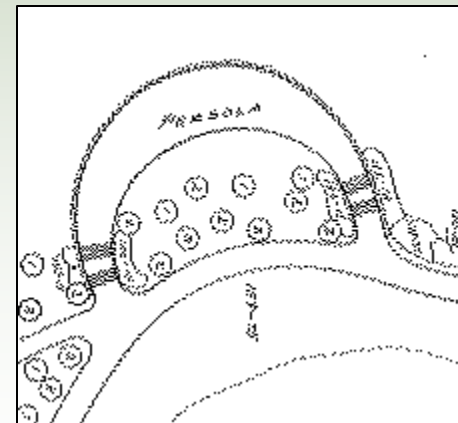
- Historic Interpretation
- Gathering Space
- Stone Pointing
- Accessible Surfacing (Stabilized Aggregate)
- Additional Seating
- Views Enhanced/Retained



# Discovery Areas: “Pergola” Overlook



*Fresh Pond Hotel ca. 1796*



*1904 Pergola Plan*



# Discovery Areas: “Pergola” Overlook

- Views to Pond and Bowl
- Low Stone Seating Wall
- 4.5% Ramp Access
- Maintain Ex. Memorial Trees
- Accessible Surfacing – Reinforced Turf Rings
- Bench Reconfiguration



# Discovery Areas: “The Grove”

*A small wood or stand of trees lacking dense undergrowth*



# Discovery Areas: “The Glade”

*An open place in a forest*



# “Grove” and “Glade”



# Discovery Areas: “The Glade”

- Enhance Existing Open Place
- Accessible Surfacing: Fibar
- Seating: Log Stools and Benches



# Discovery Areas: “The Grove”

- Found Objects
- Education
- Exploration
- Balance



# Discovery Areas: “The Moraine”

- Relocated Section of Crest Loop Path
- Compacted Soils and Evidence of Erosion
- Historic Excavation of Glacial Material



# “The Moraine”

- Drainage Feature
- Connects Lower and Upper Drainage Features
- Visual Connection (Educational)
- Reinforces New Alignment for Crest Loop Path





# Next Steps

- Site Walk  
**April 1<sup>st</sup> @ 5:30** pm at Kingsley Park
- Public Comments Due:  
**May 3**  
[fpr@cambridgema.gov](mailto:fpr@cambridgema.gov)
- Next Public Meeting:  
Permitting Hearing – Date TBD
- Project Webpage:  
[www.cambridgema.gov/CWD/Kingsley.cfm](http://www.cambridgema.gov/CWD/Kingsley.cfm)