

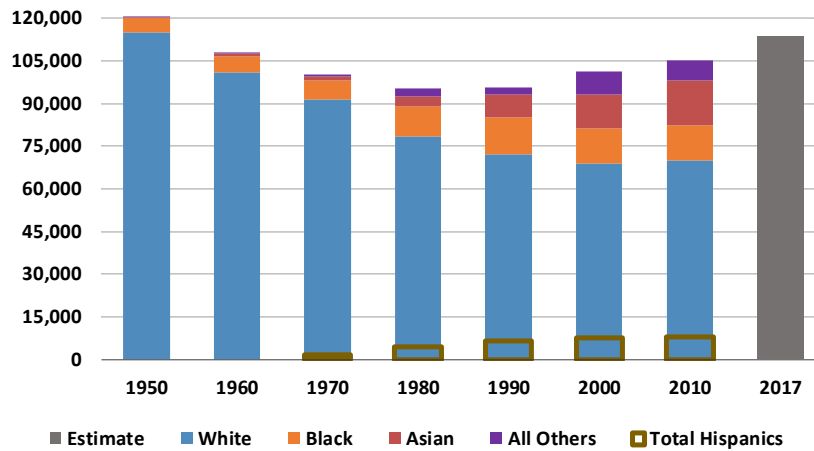
Cambridge Demographic Summary

Community Engagement Team

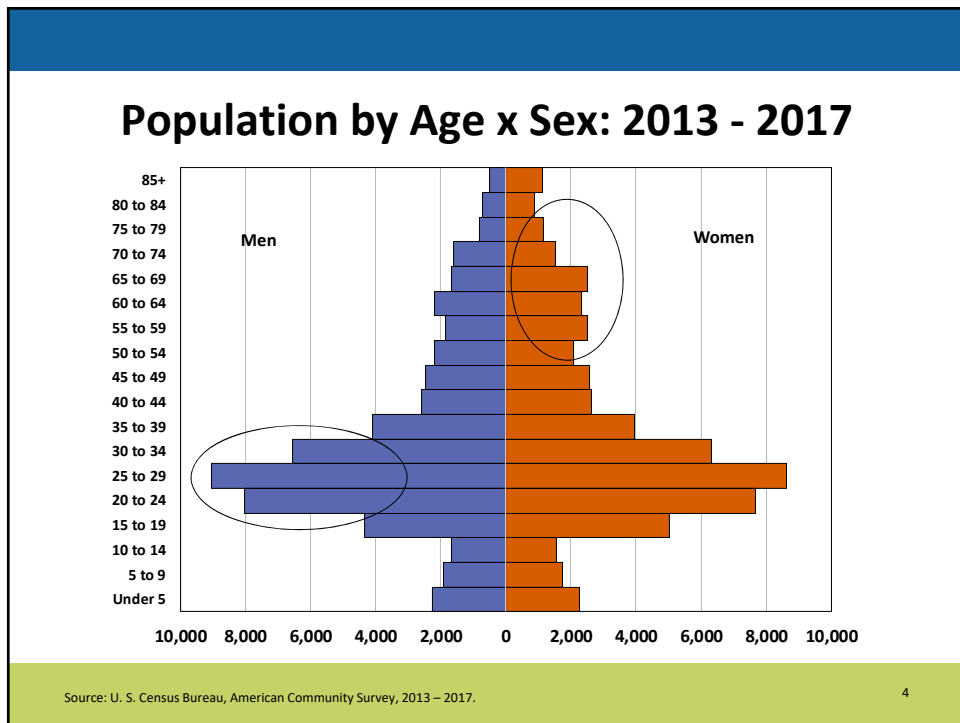
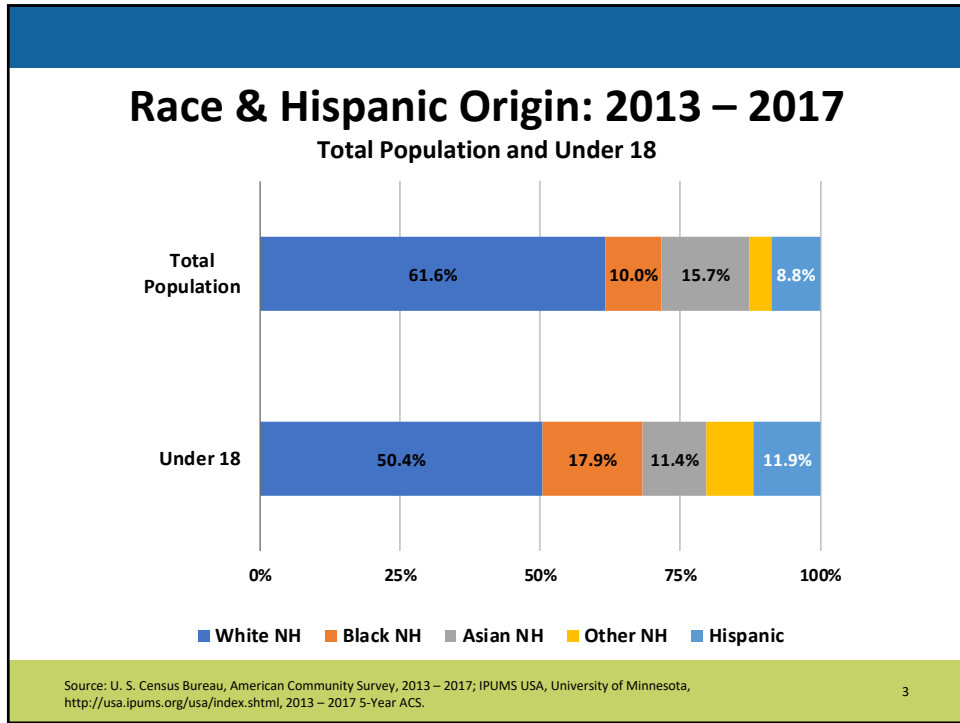
June 13, 2019

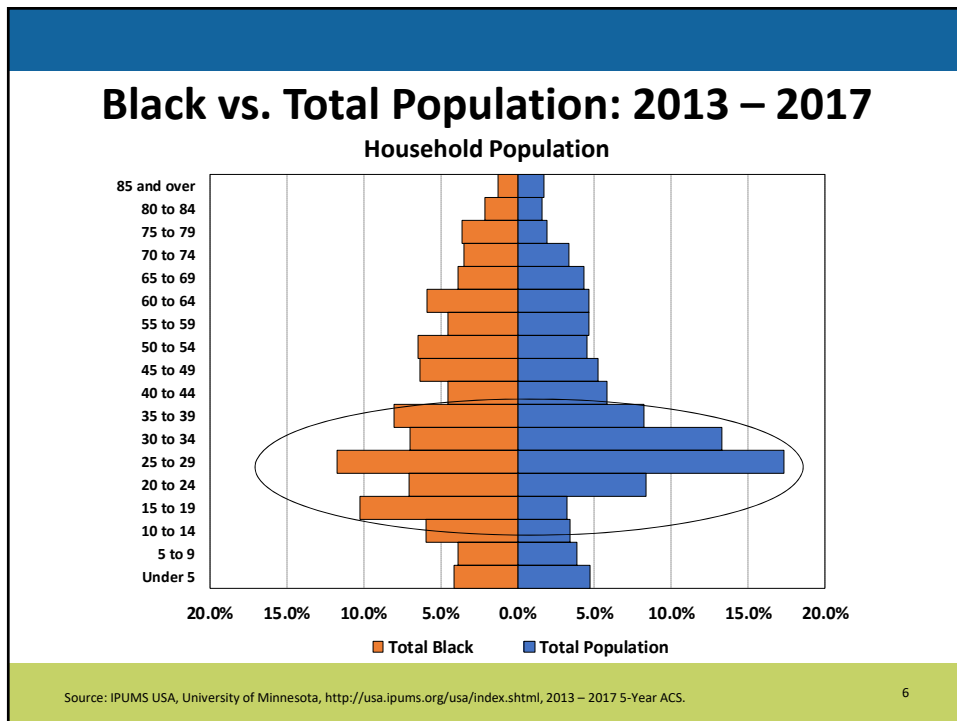
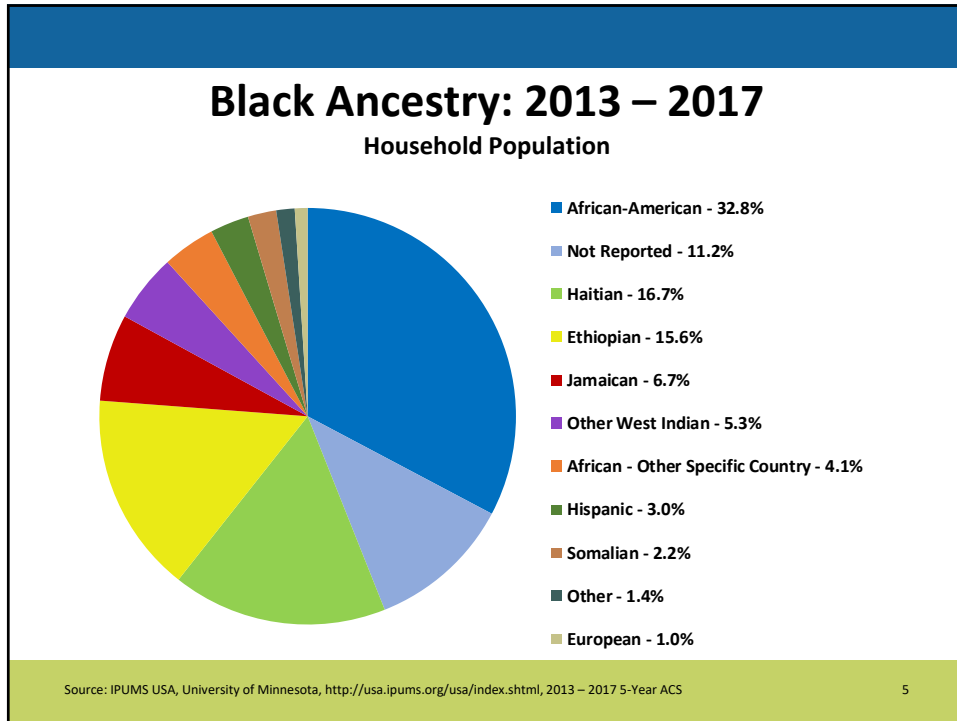
Cambridge Community Development Department
Clifford Cook
Senior Planning Information Manager
ccook@cambridgema.gov

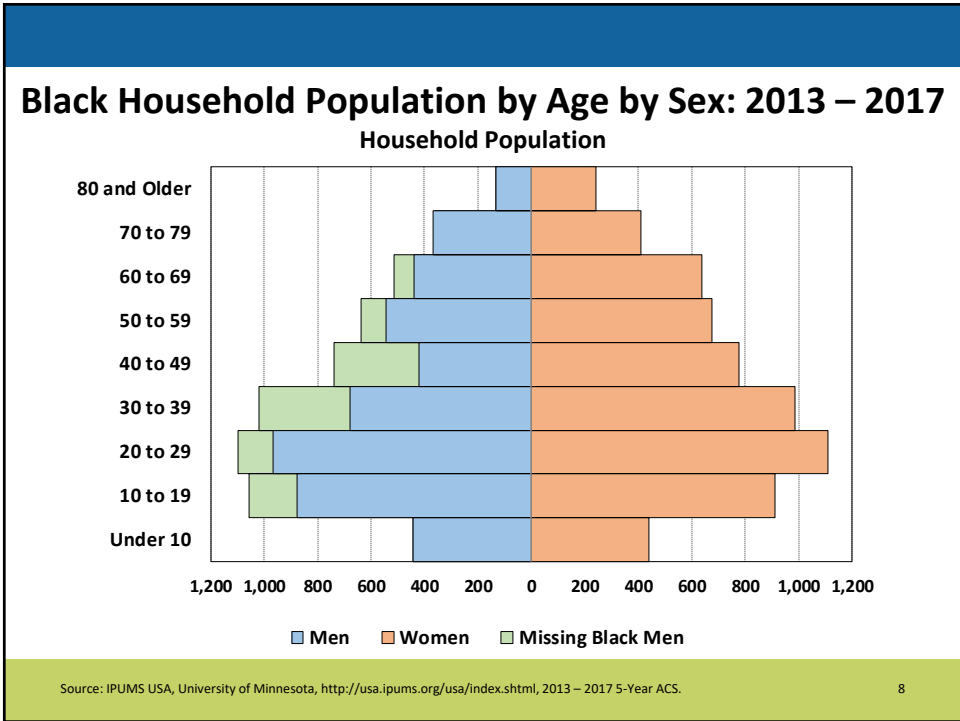
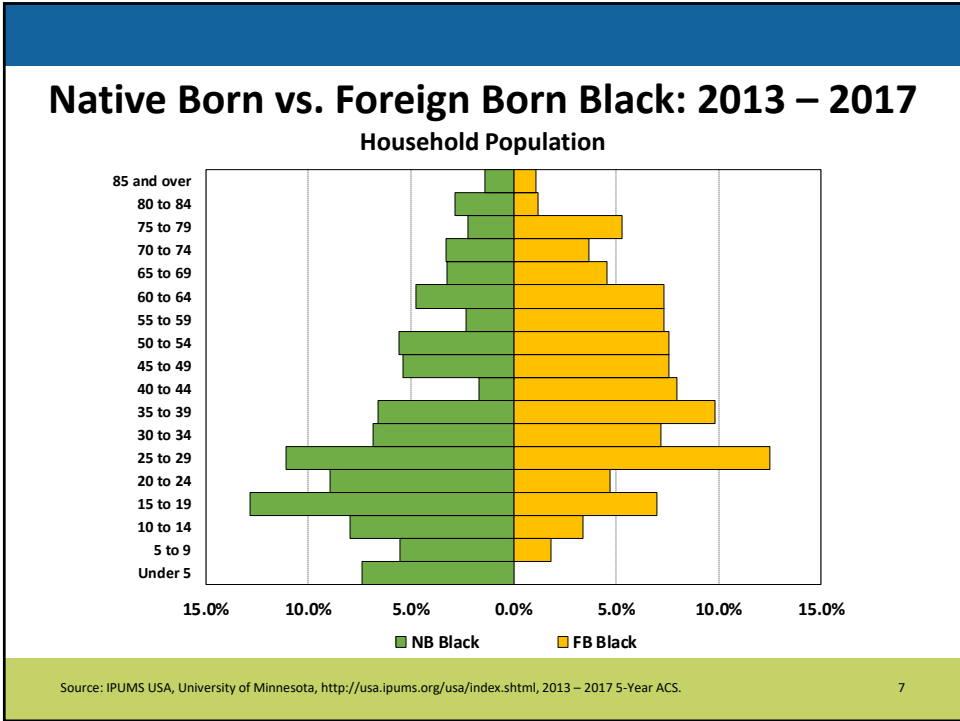
Population Trend: 1960 - 2017



Source: U.S. Census Bureau, Decennial Census, 1960 through 2010; American Community Survey, 2017.

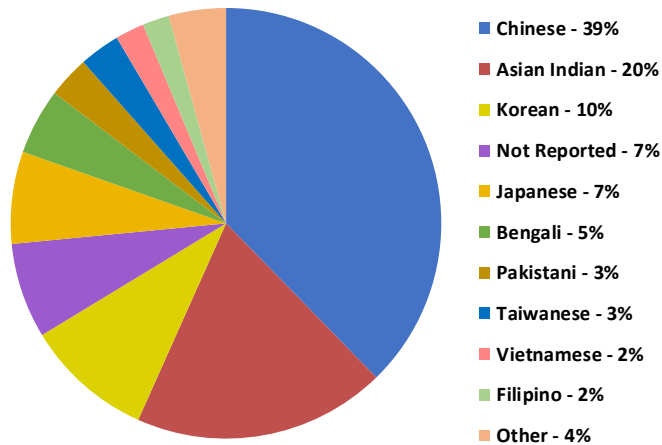






Asian Population by Ethnicity: 2013 – 2017

Household Population

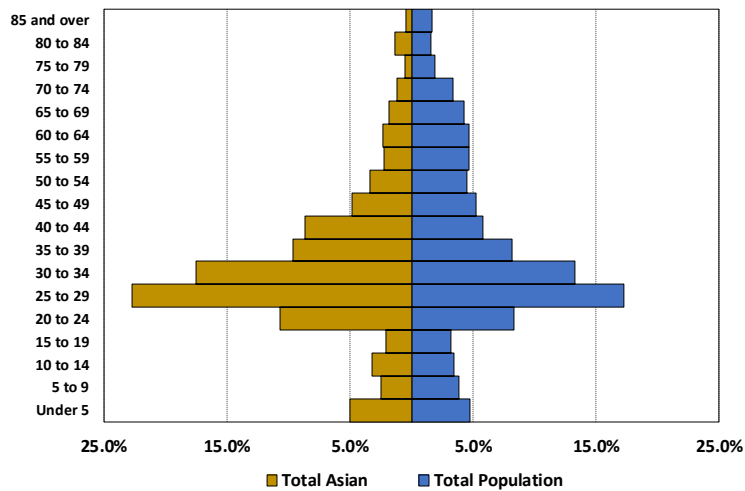


Source: IPUMS USA, University of Minnesota, <http://usa.ipums.org/usa/index.shtml>, 2013 – 2017 5-Year ACS.

9

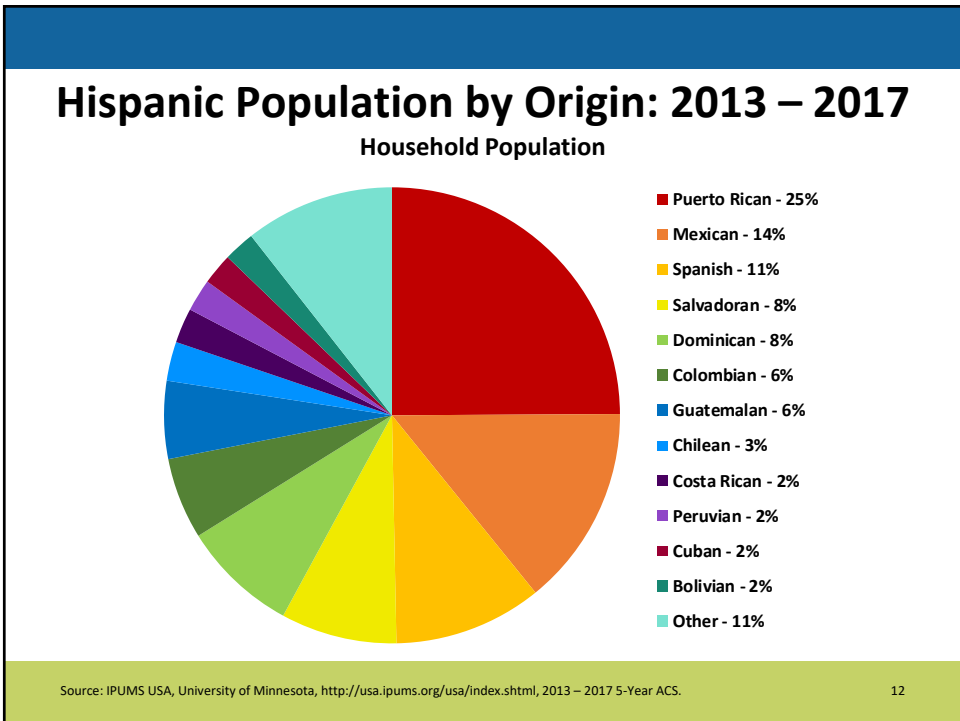
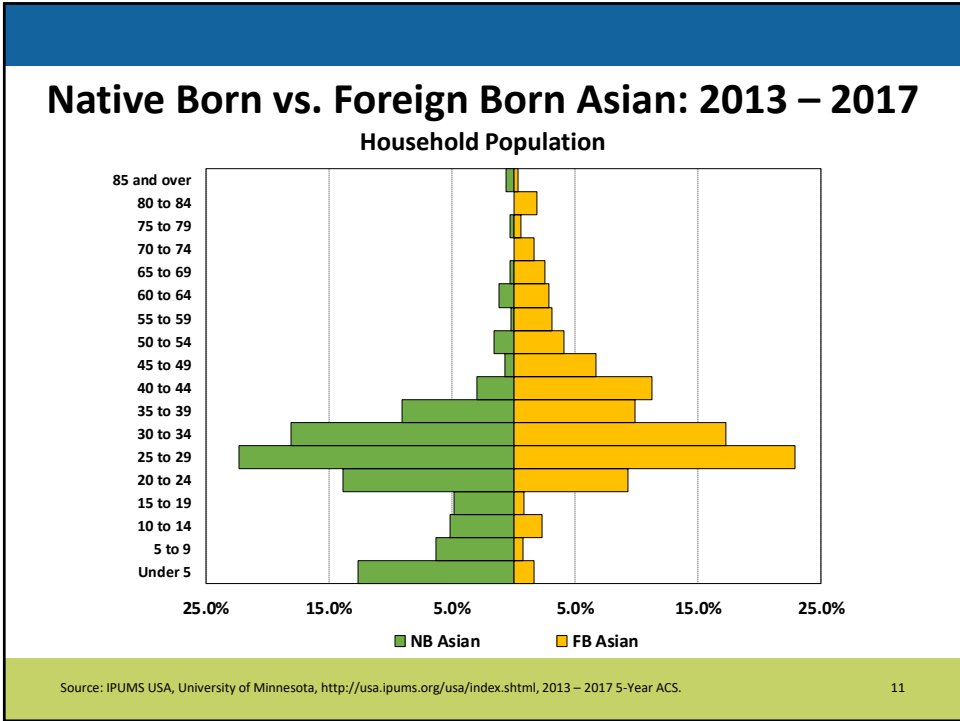
Asian vs. Total Population: 2013 – 2017

Household Population



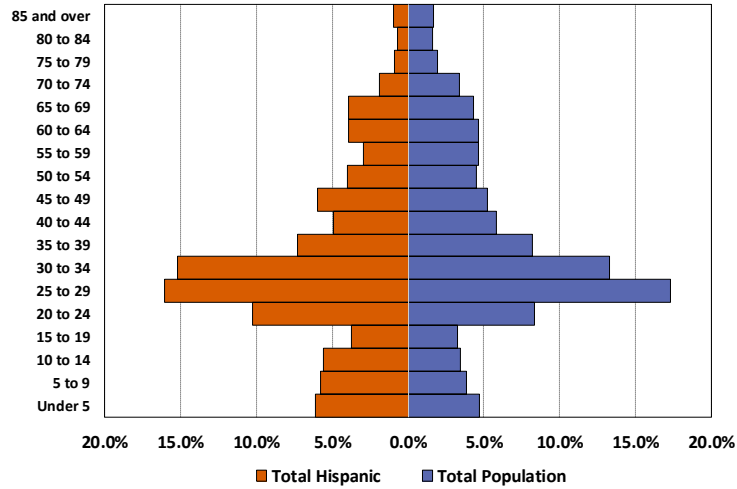
Source: IPUMS USA, University of Minnesota, <http://usa.ipums.org/usa/index.shtml>, 2013 – 2017 5-Year ACS.

10



Hispanics vs. Total Population: 2013 – 2017

Household Population

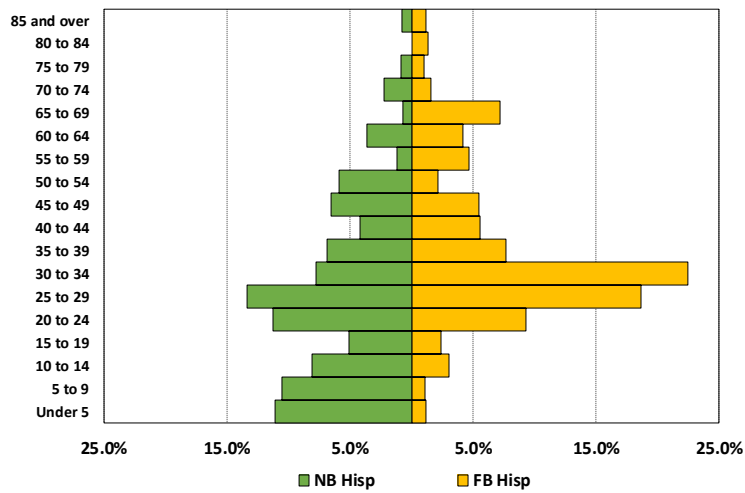


Source: IPUMS USA, University of Minnesota, <http://usa.ipums.org/usa/index.shtml>, 2013 – 2017 5-Year ACS.

13

Native Born vs. Foreign Born Hispanic: 2013 – 2017

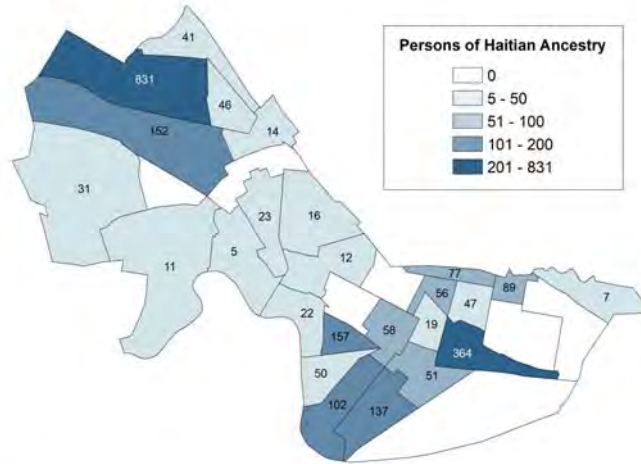
Household Population



Source: IPUMS USA, University of Minnesota, <http://usa.ipums.org/usa/index.shtml>, 2013 – 2017 5-Year ACS.

14

Haitian Population: 2013 - 2017

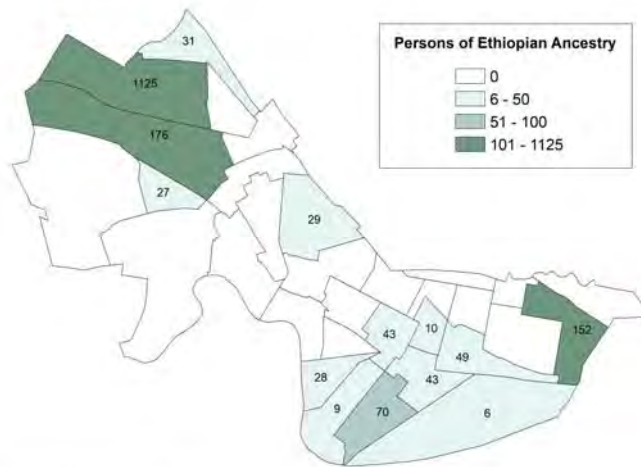


Source: 2013 - 2017 American Community Survey

Source: U. S. Census Bureau, American Community Survey, 2013 - 2017.

15

Ethiopian Population: 2013 - 2017

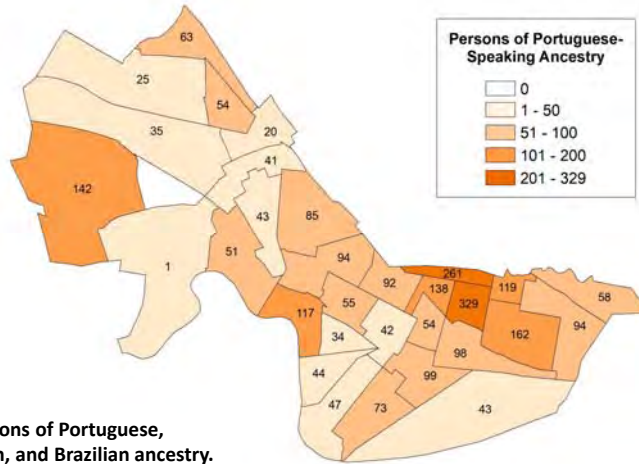


Source: 2013 - 2017 American Community Survey

Source: U. S. Census Bureau, American Community Survey, 2013 - 2017.

16

Portuguese Speaking Groups: 2013 - 2017



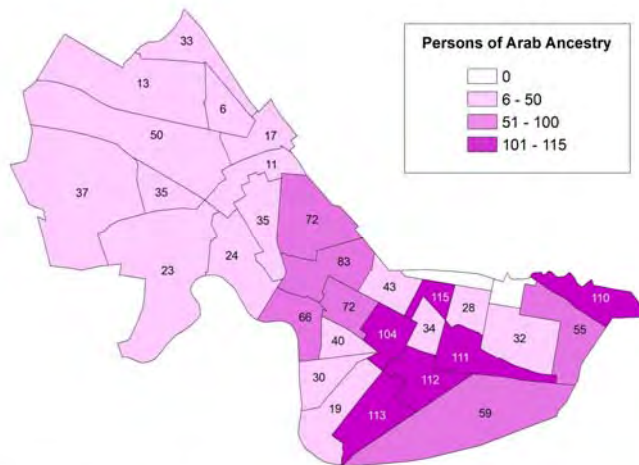
Includes persons of Portuguese, Cape Verdean, and Brazilian ancestry.

Source: 2013 - 2017 American Community Survey

Source: U. S. Census Bureau, American Community Survey, 2013 - 2017.

17

Arab Population: 2013 - 2017

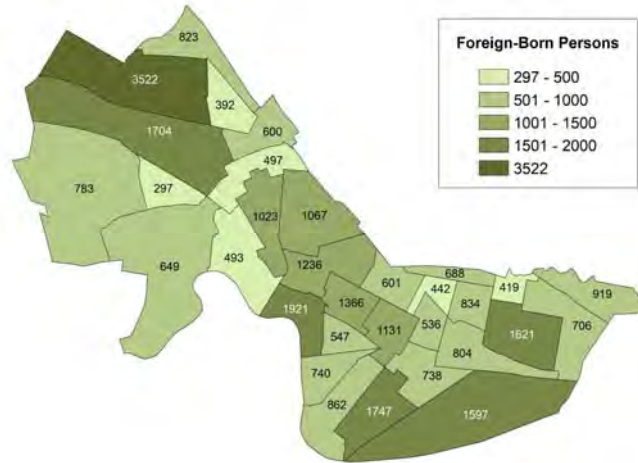


Source: 2013 - 2017 American Community Survey

Source: U. S. Census Bureau, American Community Survey, 2013 - 2017.

18

Foreign Born Residents: 2013 – 2017



Source: 2013 - 2017 American Community Survey

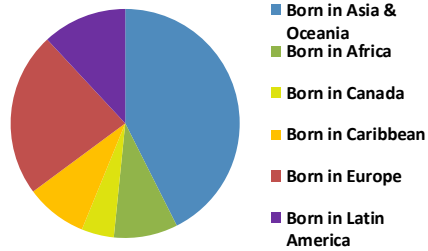
Source: U. S. Census Bureau, American Community Survey, 2013 – 2017.

19

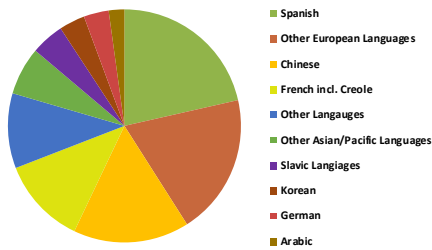
Foreign Language & Birth: 2013 - 2017

Foreign Born	28.2%
Entered Since 2000	18.6%
Entered Since 2010	11.1%
Naturalized Citizen	10.4%

Place of Birth Outside United States



Languages Spoken other than English



Proportion of Total Population

Speak Another Language at Home	32.5%
Speak English less than Very Well	7.7%
Linguistically Isolated Households	5.5%

* Figures in tables are proportion of total population

Source: U. S. Census Bureau, American Community Survey, 2013 – 2017.

20

PLINE CPSD Student Languages: October 2018

Language	White	Black	Asian	Other Race/ Not Hispanic	Hispanic of Any Race	Total
English	2,456	1,129	367	578	597	5,127
Spanish	45	9	1	6	331	392
Creole (Haitian)	1	181	3	0	0	185
Amharic	1	163	0	1	0	165
Bengali	3	3	150	6	2	164
Arabic	82	40	9	5	0	136
Chinese	1	0	107	11	0	119
Portuguese	44	9	0	2	30	85
Korean	0	0	61	2	0	63
Somali	1	60	1	1	0	63
Other Languages	225	84	216	21	7	553
Total	2,859	1,678	915	633	967	7,052
% Not English	14.1%	32.7%	59.9%	8.7%	38.3%	27.3%

Source: Cambridge Public School Department, 2018.

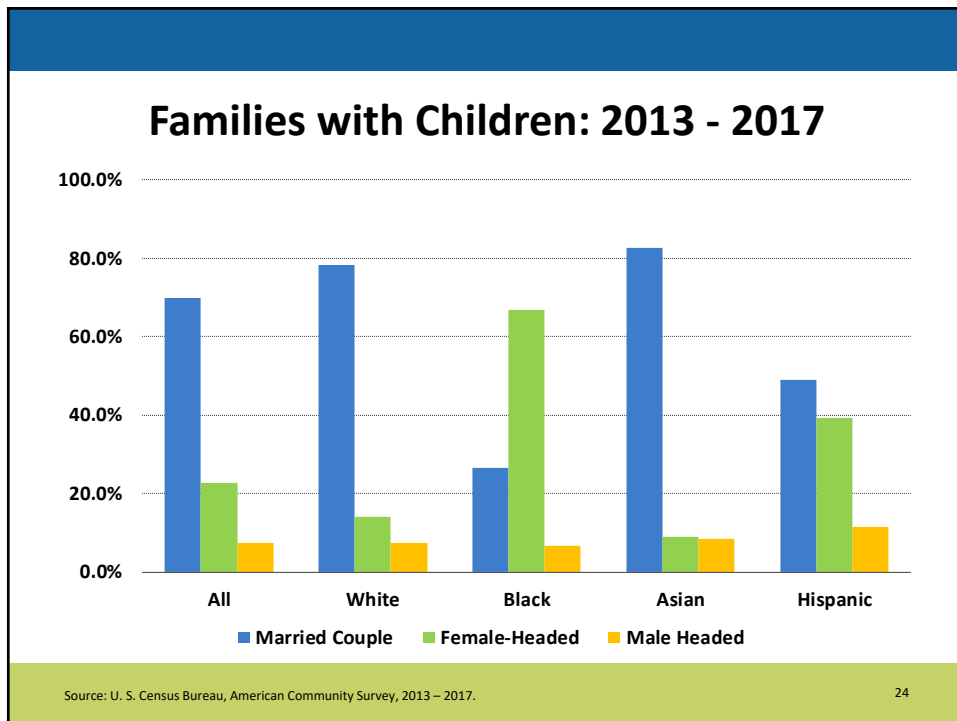
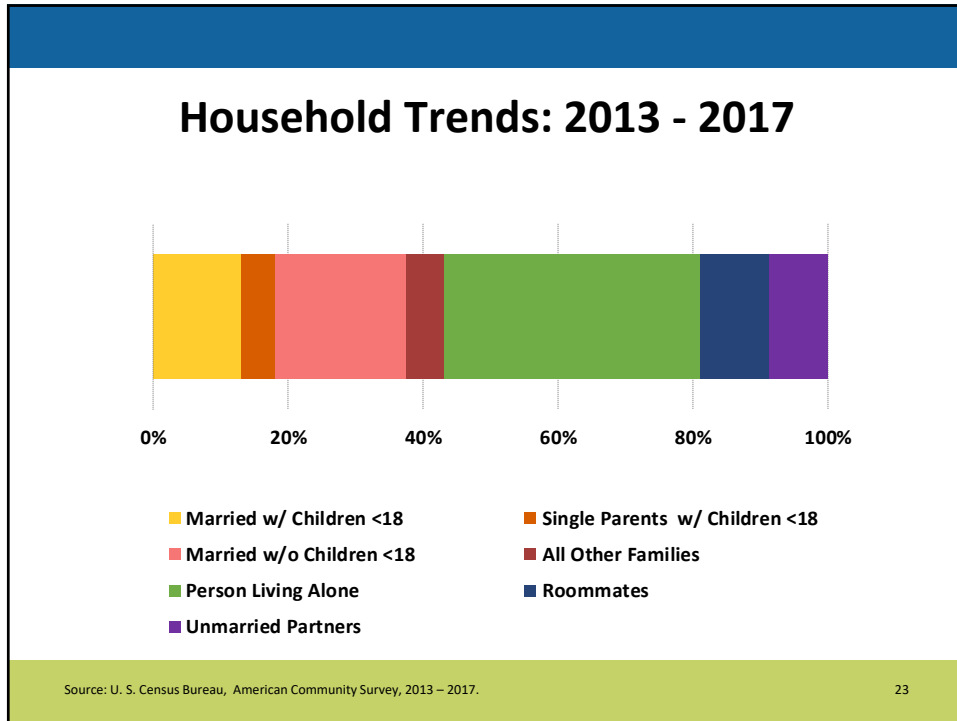
21

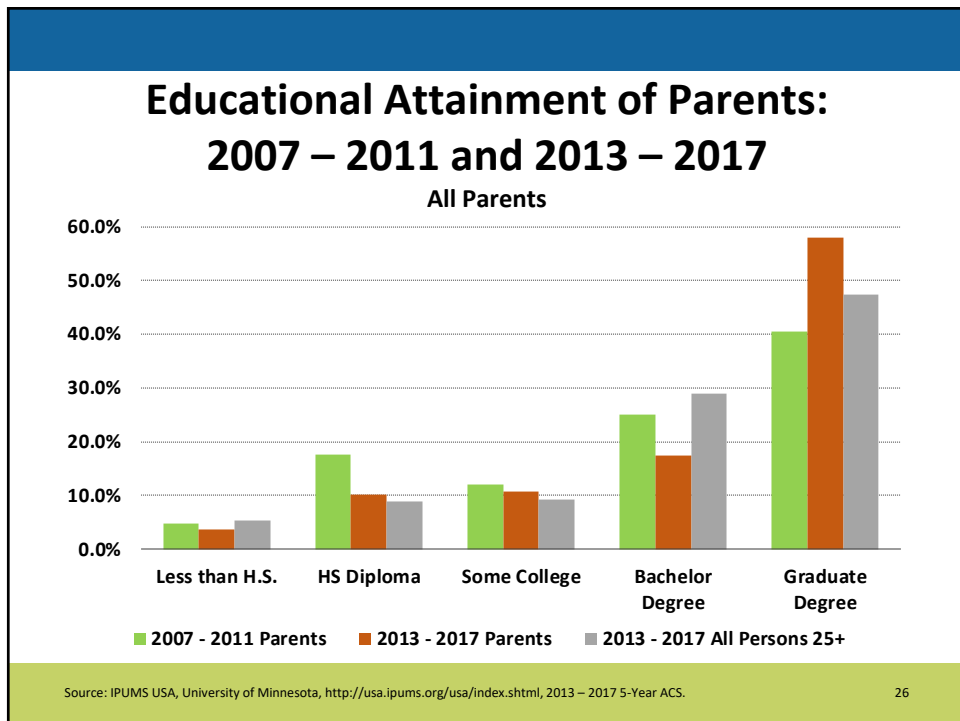
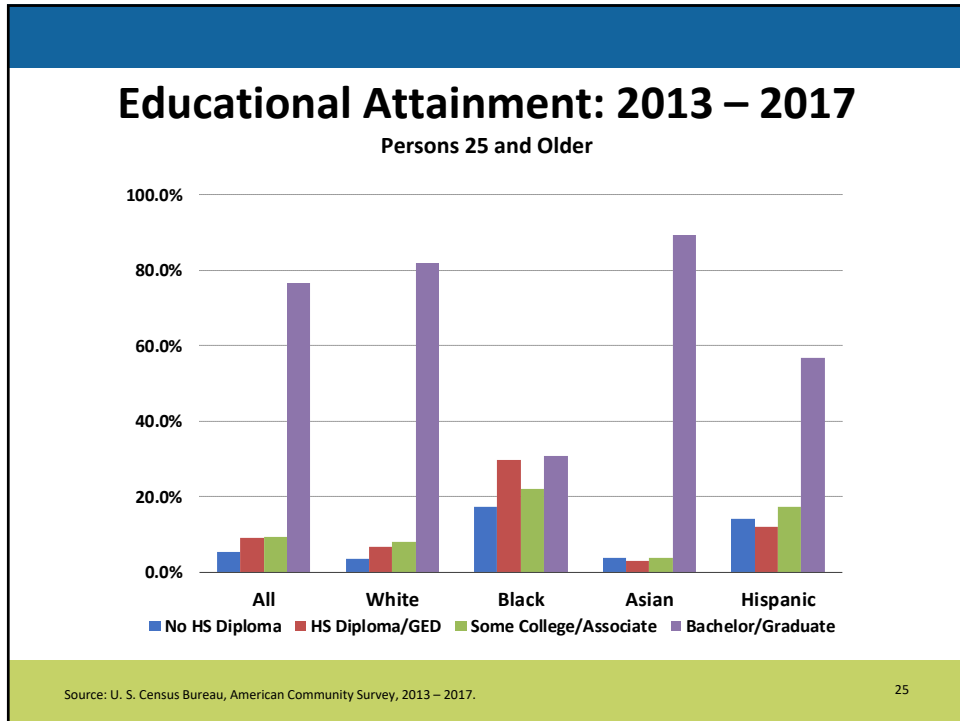
Top Emigrant Countries: 1990, 2000 & 2013 – 2017

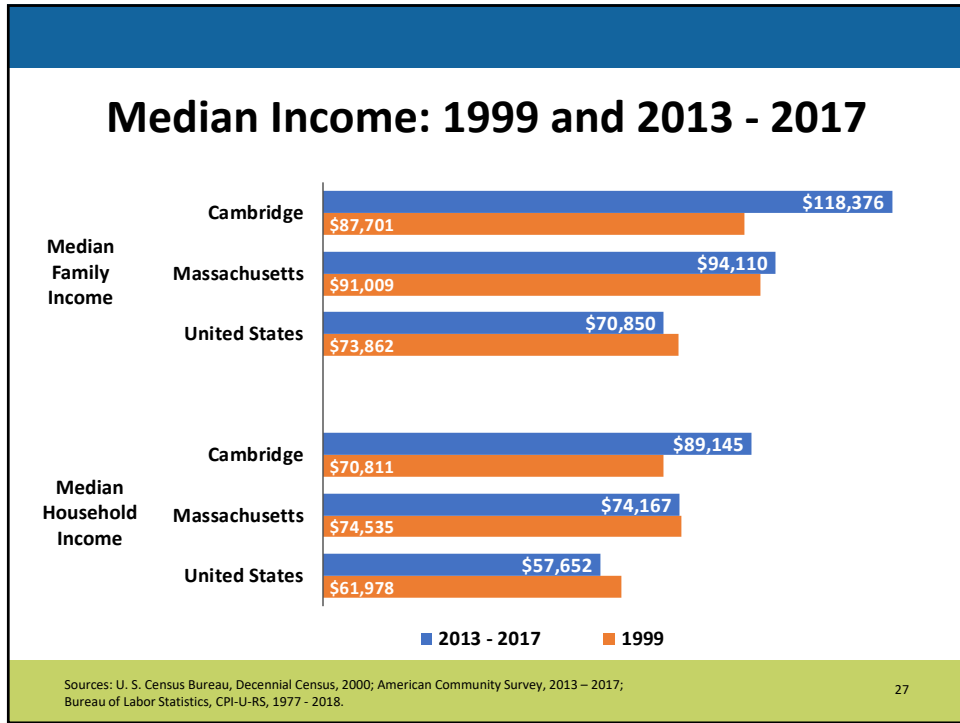
	1990		2000		2013 - 2017
1.	Portugal 1,854	Haiti	2,386	China (mainland)	3,433
2.	Canada 1,835	China (mainland)	1,754	India	2,195
3.	Italy 956	India	1,390	Haiti	1,531
4.	India 842	Portugal	1,327	Ethiopia	1,523
5.	Germany 780	Korea	1,157	Canada	1,432
6.	England/Scotland 741	Canada	1,046	Korea	1,110
7.	West Indies 644	Japan	905	Japan	814
8.	China 545	El Salvador	719	Germany	809
9.	Russia/USSR 408	Taiwan	676	El Salvador	763
10.	Japan 354	England/Scotland	654	France	731
11.	Africa 305	Brazil	651	Dominican Republic	558
12.	Greece 276	Jamaica	603	Pakistan	533

Sources: U. S. Census Bureau, Decennial Census, 1990 and 2000; American Community Survey, 2013 – 2017.

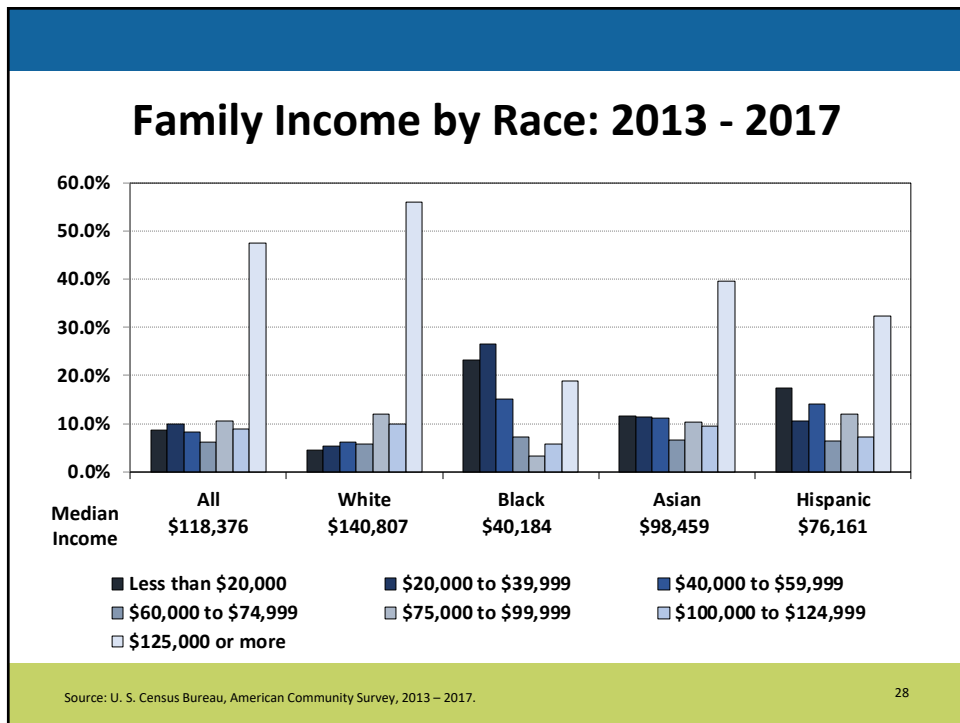
22



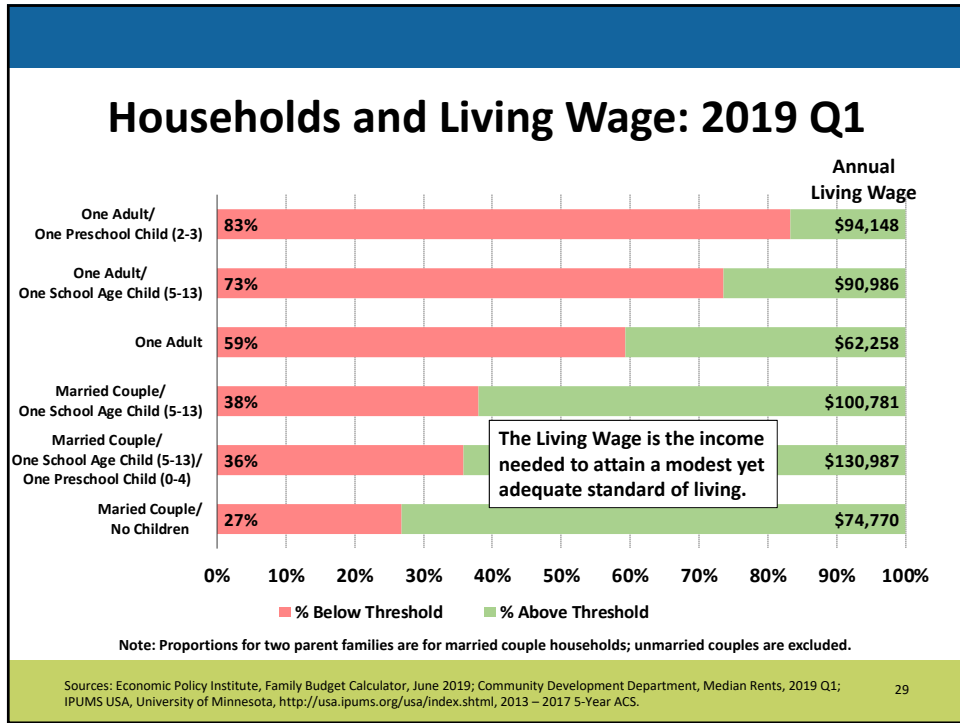




27



28



Lower Income Language Groups: 2013 – 2017

Persons 5 and Older

	Proportion	Estimate
Spanish	52%	3,200
French	59%	1,800
Chinese	46%	1,800
Amharic, Ethiopian, Etc.	79%	1,200
Hindi and Related Languages	52%	1,100
Portuguese	53%	700
Arabic	74%	600
Korean	60%	600
Other Afro-Asiatic Languages	100%	400
German	25%	300
Hamitic	100%	200
Greek	41%	200
Japanese	36%	200
Dravidian	30%	200

At least 25% and 200 members earning less than 300% of poverty level

Source: IPUMS USA, University of Minnesota, <http://usa.ipums.org/usa/index.shtml>, 2013 – 2017 5-Year ACS.

What do we mean by “Poverty”?

Persons in poverty live in a household earning less than the following amount during the year:

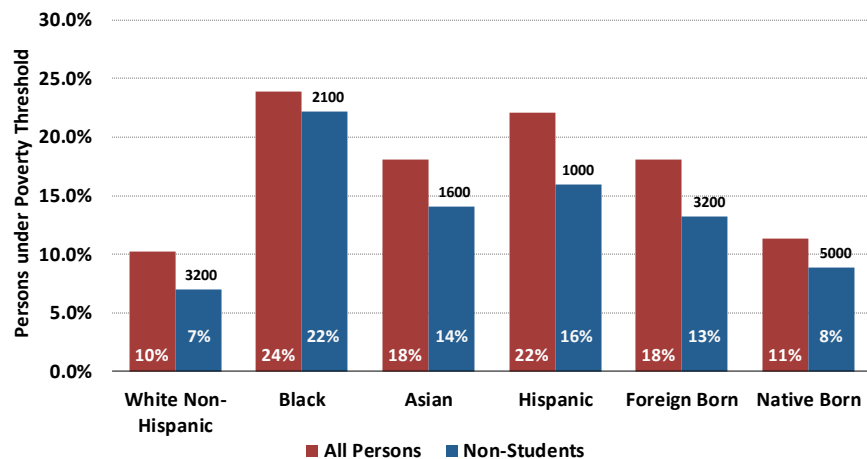
Household Size	2019 Poverty Guidelines
1 person	\$12,490
2 persons	\$16,910
3 persons	\$21,330
4 persons	\$25,750
5 persons	\$30,170

By definition, dormitory and other group quarters residents do not fall under poverty thresholds.

Source: U.S. Department of Health & Human Services, <https://aspe.hhs.gov/poverty-guidelines>, 2018 Poverty Guidelines.

31

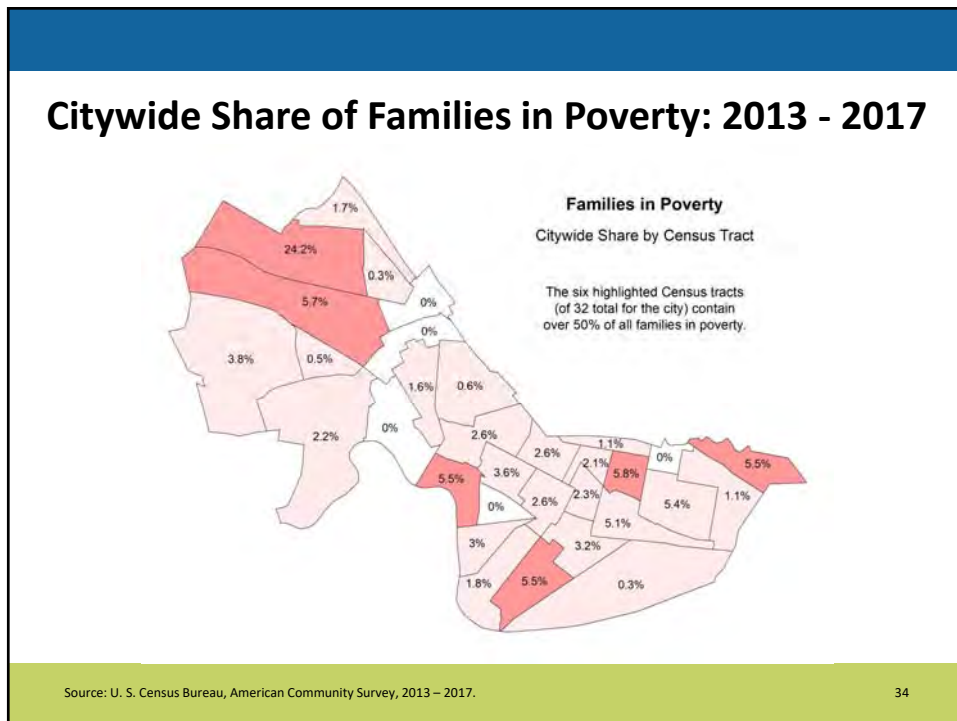
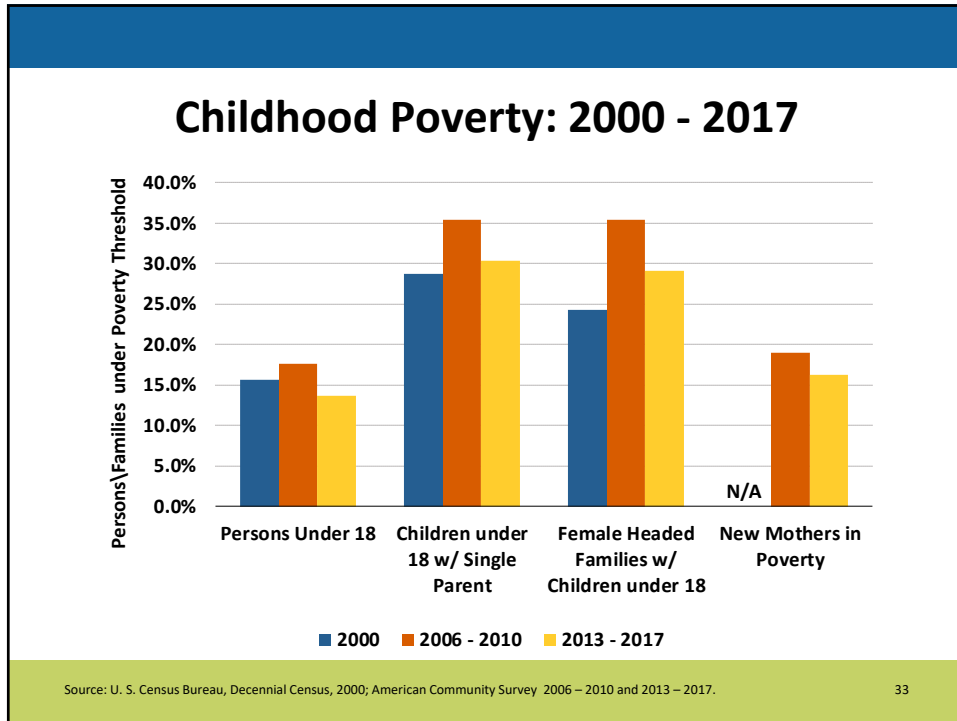
Poverty, Race & Student Status: 2013 - 2017



Figures indicate the number of non-students residing in households with income under the poverty threshold.

Source: IPUMS USA, University of Minnesota, <http://usa.ipums.org/usa/index.shtml>, 2013 – 2017 5-Year ACS.

32



Public Assistance Program Participation

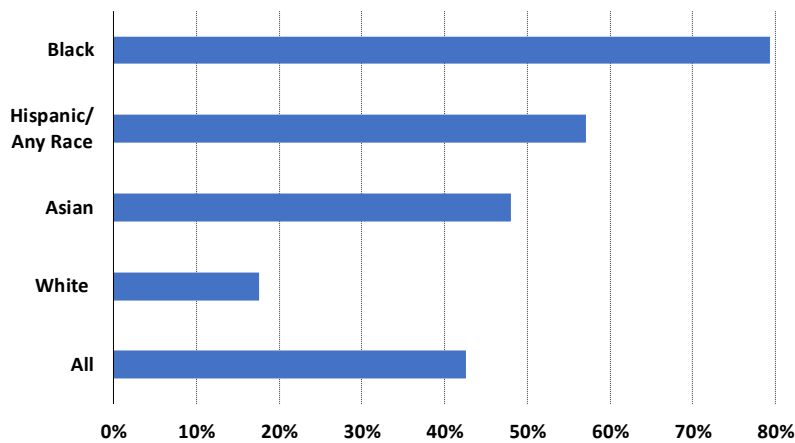
Program	Source	Period	Households/ Persons	Average Benefit	
Supplemental Security Income (SSI)	ACS	2013-17	1,454	3.3%	\$9,500
Social Security Disability ¹	Social Security	Dec. 2017	1,425	1.3%	\$14,424
Social Security Retirement ¹	Social Security	Dec. 2017	8,595	7.8%	\$19,500
Cash Public Assistance	ACS	2013-17	876	2.0%	\$5,200
SNAP	MA DTA	March 2019	3,997	9.0%	--
Free/Reduced Cost School Lunch ^{1,2}	CPSD	October 2018	3,006	42.6%	--
Transitional Aid to Families with Dependent Children	MA DTA	March 2019	143	0.3%	--
Emergency Aid to the Elderly, Disabled, and Children	MA DTA	March 2019	273	0.6%	--

1. Social Security statistics and Free/Reduced School Lunch figures reported for persons rather than households.
 2. Free/Reduced Cost Lunch reported as proportion of CPS student population.

Sources: U. S. Census Bureau, American Community Survey, 2013 - 2017; Social Security Administration, OASDI Beneficiaries by State and ZIP Code, March 2019, Massachusetts DTA, Caseload by Zip Code Report, June 2019; Cambridge Public School Department, 2018.

35

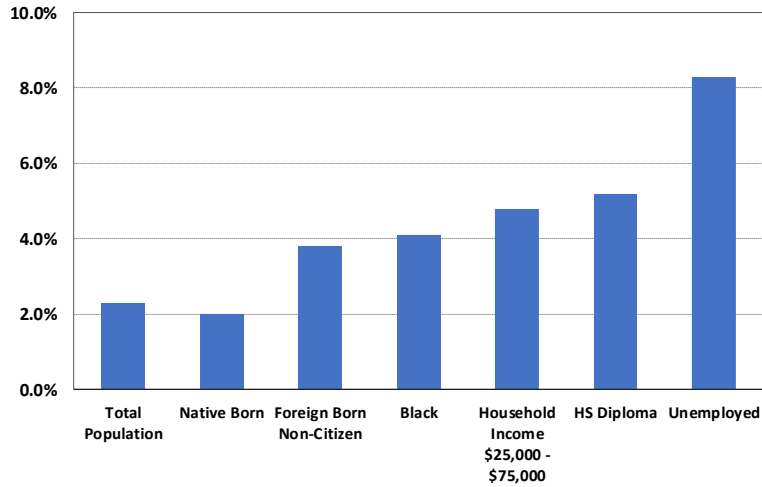
CPS Students Receiving Free/ Reduced Cost Lunch: October 2018



Source: Cambridge Public School Department, 2018.

36

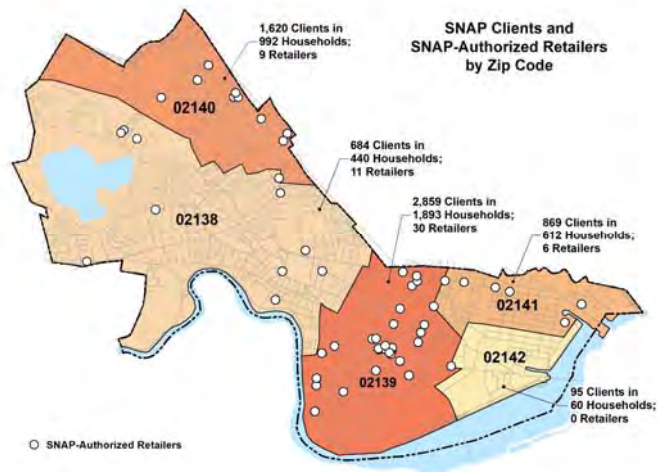
Persons Lacking Health Insurance: 2013 – 2017



Source: U. S. Census Bureau, American Community Survey, 2013 – 2017.

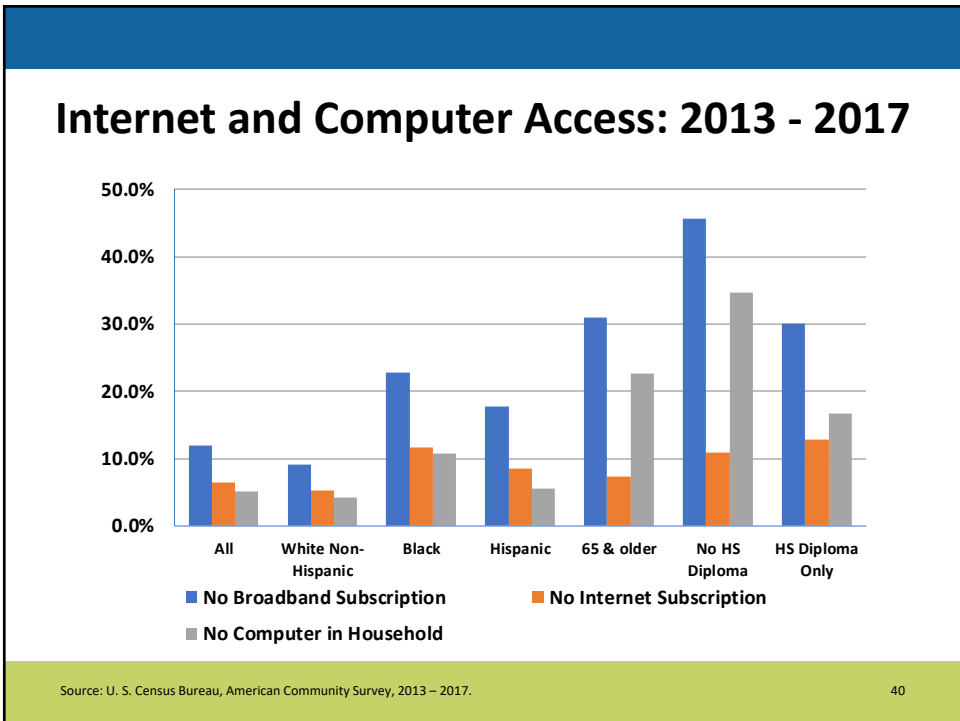
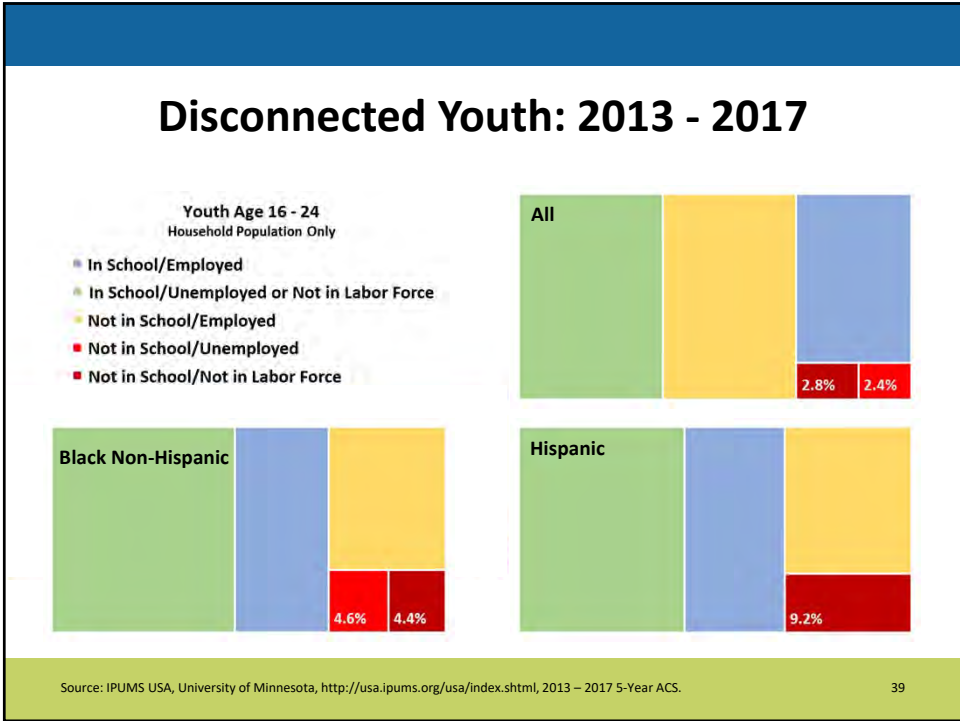
37

Food Stamps: May 2019

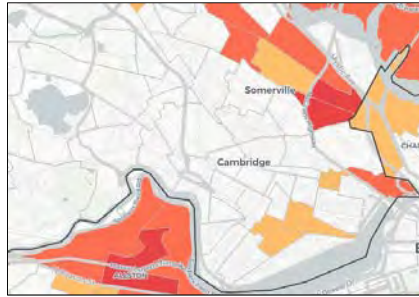


Source: Massachusetts Department of Transitional Assistance, 2019; USDA Food & Nutrition Service, 2019.

38



The 2020 Census: What It is - Why It Matters



Hard to Count Tracts:
Based on response rate to 2010 Census

Response Outreach Mapper:
Based on demographic characteristics of census tract



Sources: Center for Urban Research, CUNY Graduate Center, <http://www.censushardtcountmaps2020.us/>, accessed June 12, 2019
U. S. Census Bureau, Response Outreach Mapper, <https://www.census.gov/room>, accessed June 12, 2019.

41

A Question for the Audience...

What data is missing?

What else would you like to learn about?

42