

Art Work for Rafferty Park



Play Sculptures
Thomas Berger
Kittery / Maine
www.thomasbergersculpture.com

Bring art and nature close to the hearts of children

What kind of art to bring to Rafferty Park?

Goals of the art work:

- bring a sense of value and beauty
- appreciated by all ages incl. children
- allow for interaction
- art culturally inclusive / not provocative



What kind of art to bring to Rafferty Park?

Other goals of the art work specific to animal sculpture

- connecting to local nature and history
- sitting / riding on an animal
- allow for imaginary interaction with an animal
- emotional connection to animals and nature



Proposal

- **Two Sheep in the Meadow**
- there were farms in the area until less than 100 years ago
- sheep are friendly and cuddly
- have the right size to sit on and play with
- are universally known, and seen positively in all cultures of the world
- will integrate into the park / will look like two sheep in the meadow



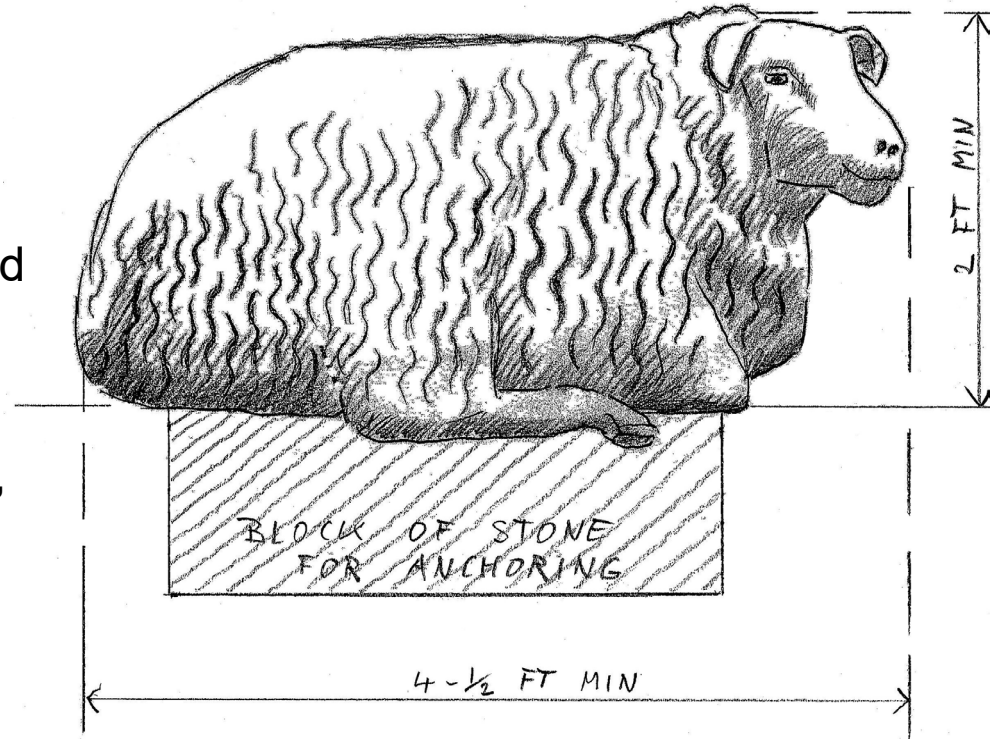
Proposal

Clay sketches of two sheep - a ewe and a ram

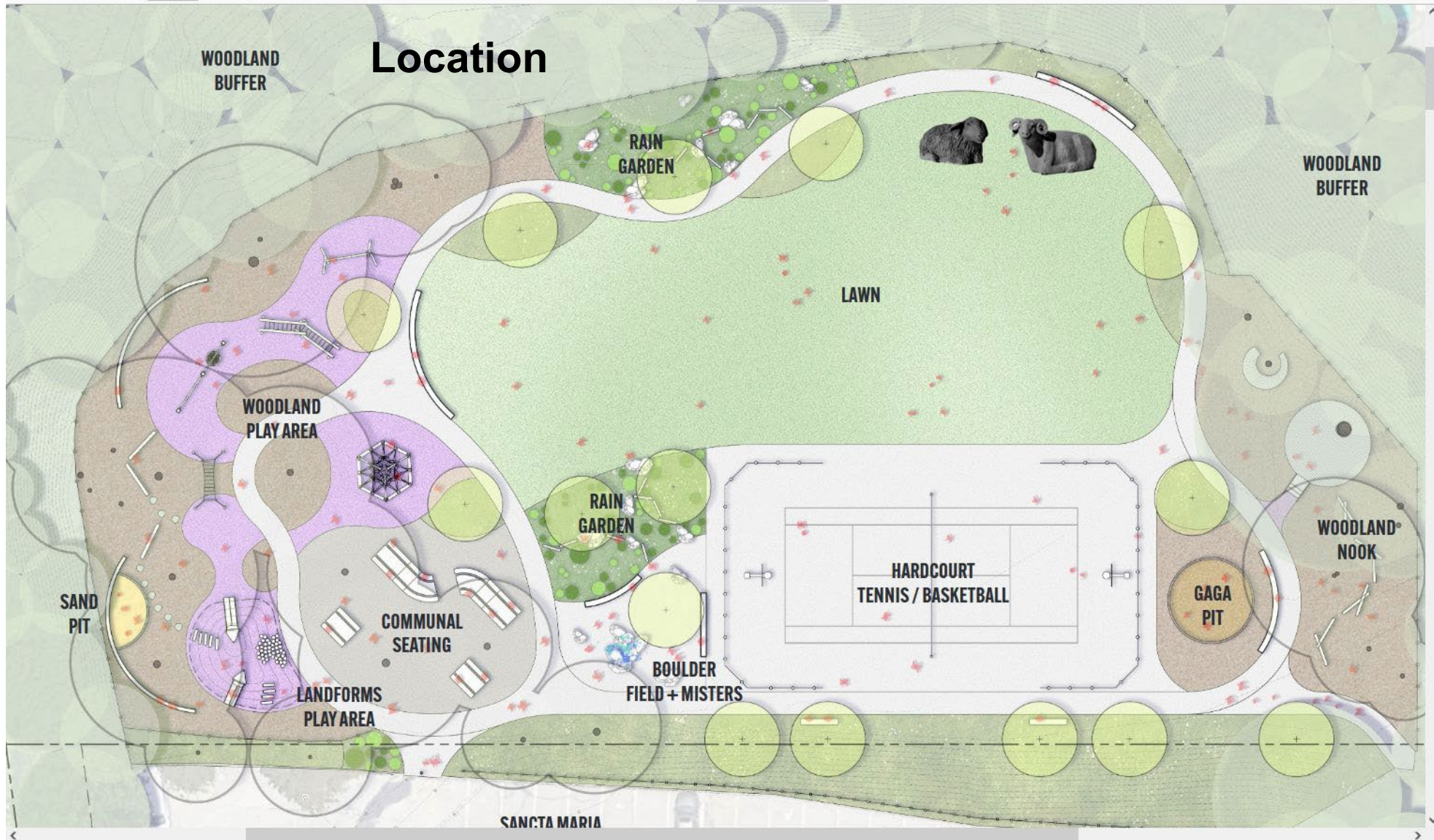


Technical Details and Dimensions

- two sheep in a sitting position
- created from whitish granite
- approx. 4.5 ft. long, 2 to 3 ft. high (life size)
- each anchored with a granite slab in ground (approx. 3' x 2' x 1'), using stainless steel rods fixed in anchoring cement or epoxy
- texture first flattened and partially polished, then textured with wavy grooves in various strength



Location



Proposed material:

Chelmsford Granite

blend of gray and white minerals with occasional black speckles



clay sketch of rams head

Thank You!

Baaah!