

Raymond Park Renovation

Community Engagement Wave #3, December 2024



CITY OF CAMBRIDGE
Community Development
Department

Agency
Landscape + Planning

Our Project Timeline

Spring 2024

March 2024
Community
Engagement Wave #1

Community
Engagement Wave #2

Fall 2024

Community
Engagement Wave #3

Summer 2025

Envision

Gather community input to imagine the future of Raymond Park together!

Design

Develop and share design concepts and incorporate community feedback.

Build

Let's build a park! The construction phase begins.

We are
here!



The Renovation Will Address Several Critical Improvements



NON-ACCESSIBLE ROUTES

The slope of the Walden St. entrance and the main pathway does not currently meet ADA accessibility standards



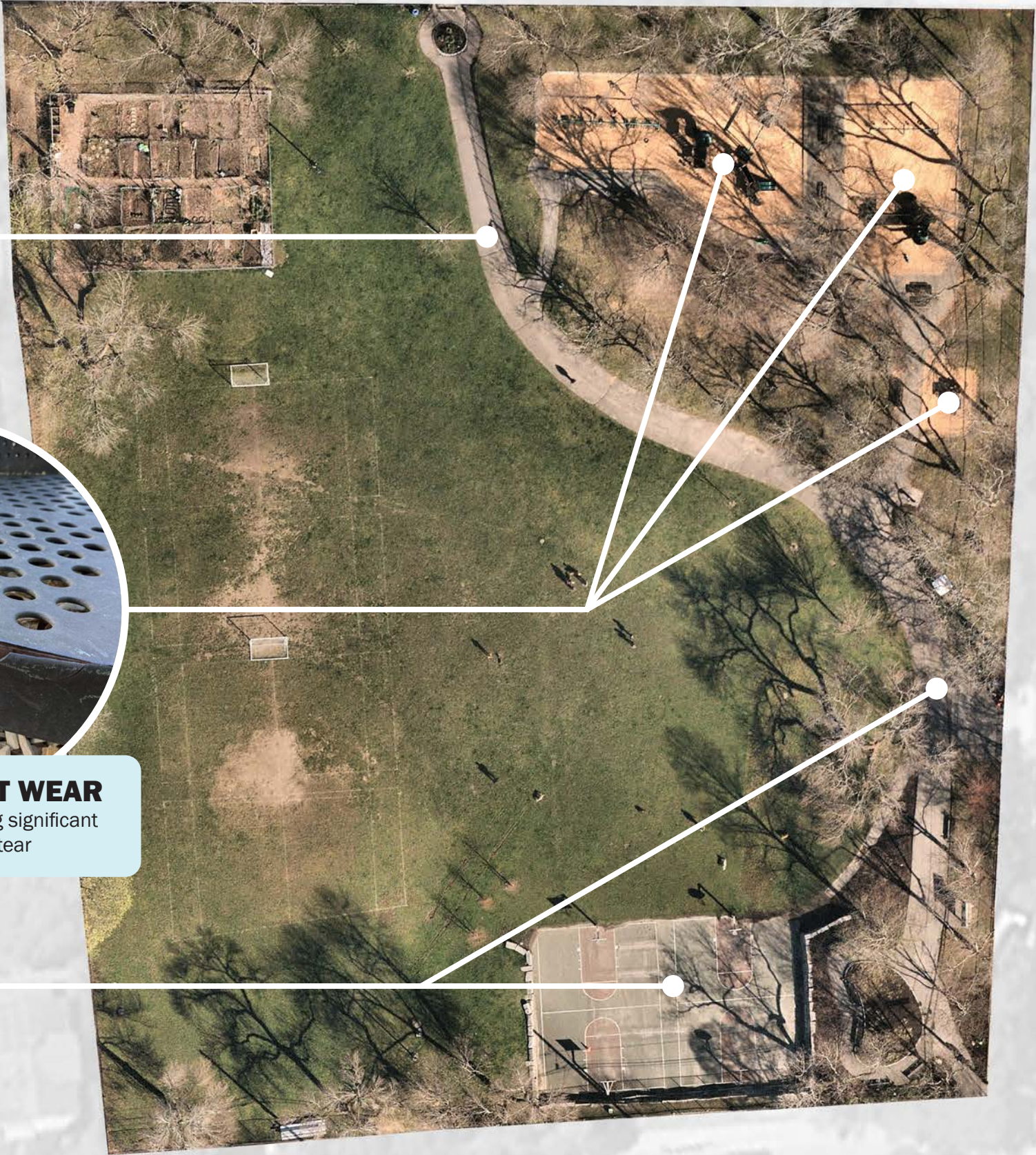
PLAY EQUIPMENT WEAR

Play equipment is showing significant signs of wear and tear



SURFACE FAILURES

Pathways and basketball court are cracking and buckling



The Renovation Will Address Several Critical Improvements



AT-RISK TREES

Existing trees lack diversity in age and species. Mature trees are threatened by exposed roots and compacted soils.



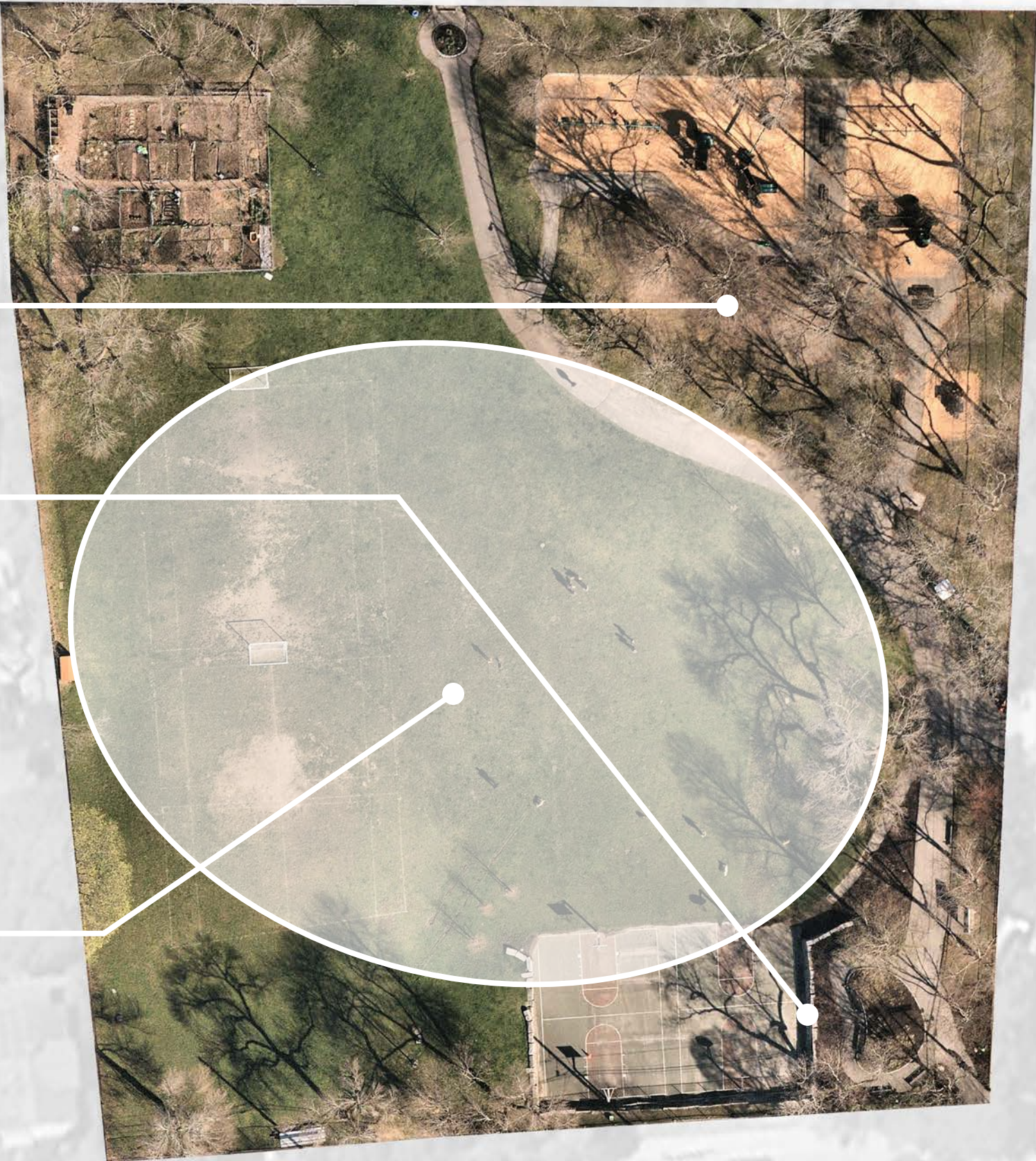
STRUCTURAL FAILURES

The stone retaining wall around the basketball court is failing, requiring renovation in this area



DRAINAGE ISSUES

There are persistent drainage issues in the field. This was the most requested improvement in wave 1 of community engagement



Addressing These Needs Requires Renovating Most of the Park

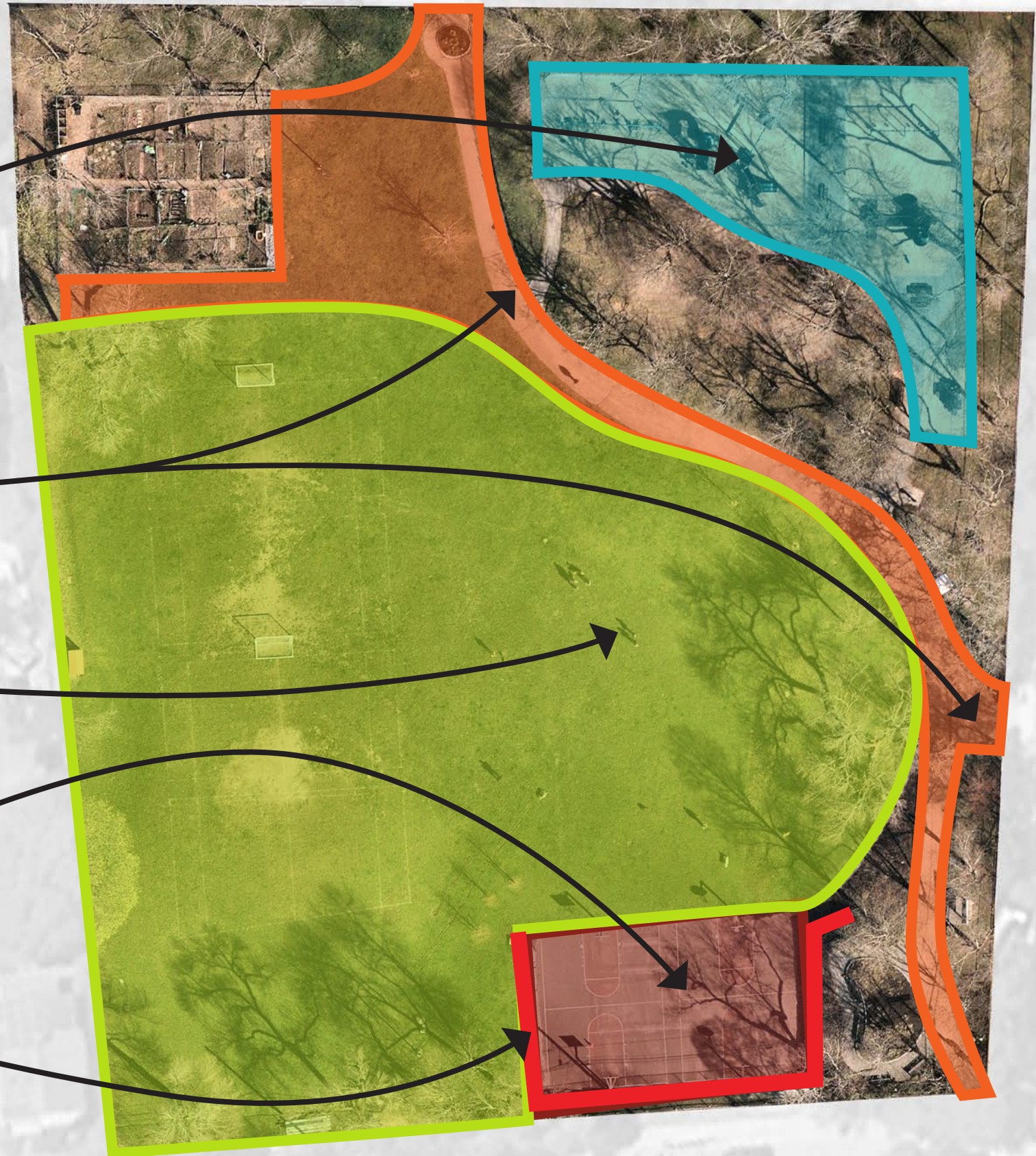
Playground upgrades

Regrade paths for
ADA compliance

Improve drainage with grading,
under-drainage, and rain gardens

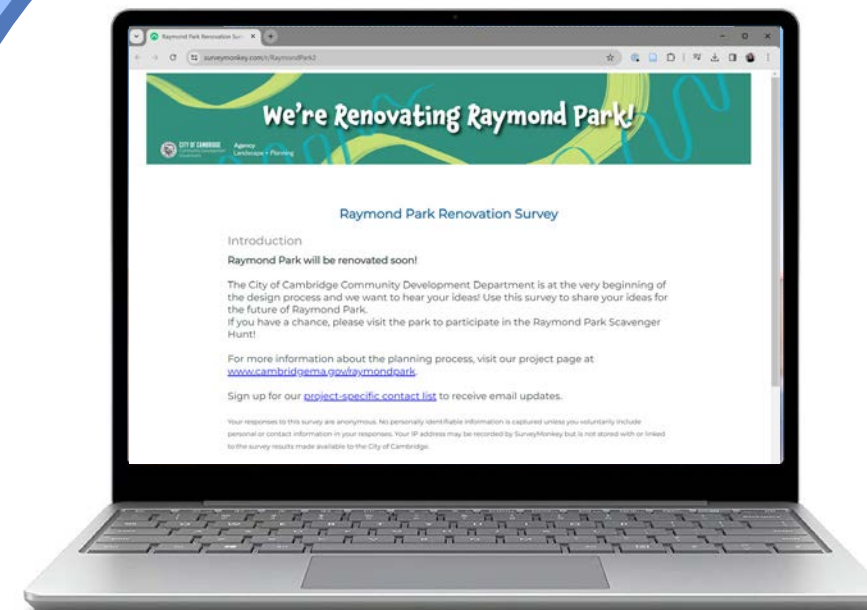
Repair sport courts

Reset the failing
retaining wall



**Thank you for sharing
your voices with us!**

**Download the Community Engagement Wave #1 Summary
at www.cambridgema.gov/RaymondPark**



291
survey responses!

39
scavenger hunt
participants!



Project Guiding Principles

These principles were developed from feedback received during community engagement wave #1!

Respectfully Renew

As a baseline, Raymond Park will continue to:

- Serve as a neighborhood destination for **play & recreation**.
- Provide **ecosystem services** to the neighborhood & city.
- Offer diverse spaces for **community connection & gathering**.

Amplify & Elevate

The park renovation can also:

- Advance and diversify **play & recreation** opportunities
- Be a model for ecosystem services & **environmental stewardship**
- Uniquely showcase **neighborhood character & city cultural expression!**



Thank you for sharing your thoughts with us again!

Download the [Community Engagement Wave #2 Summary](http://www.cambridgema.gov/RaymondPark) at www.cambridgema.gov/RaymondPark

253

survey responses!

1 open house
at Lincoln Way

3 pop ups
in the park

Countless
doggos!



The Raymond Park Community is Excited to Amplify & Elevate the Park!

According to results from the first two waves of engagement, the Raymond Park community is excited to make improvements in three major ways:

**Improved
Circulation
& Access**



**Better Play
& Recreation**



**More Seating
& Gathering
Spaces**



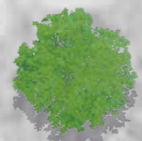
Raymond Park Renovation

The layout of the park restores and **elevates existing program in place** (field, court, playground, and community garden) and respects the beloved mature tree canopy.

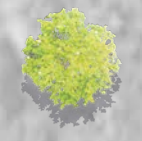
New trees and planted areas will enhance the ecology and biodiversity of Raymond Park.

“As it is now, we have so much green space that allows for everyone to use it in many ways all at once!”

“Save as many trees as possible! Plant more trees and pollinator gardens.”



Existing Trees



New Trees





Accessible Sloped Walkway

Path to Community Garden

Loop Path

Stairs

Community
Garden

Playground

Multipurpose
Field

Court

RAYMOND STREET

WALDEN STREET

UPLAND ROAD

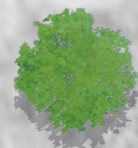
Improved Circulation & Access

- A **new loop path** will introduce an accessible route throughout the park. Current pathways do not meet ADA accessibility requirements.
- A new **path to the community garden** provides accessible connection to a public resource.

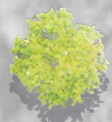
Better Play & Recreation

- The renovation will **address drainage issues** in the multipurpose field and **maintain open green space**
- **Enhancements to the court** will address existing issues with the paving and stone walls and enhance the space by creating **more opportunities for flexible use and nearby seating & gathering**
- The **playground upgrades** will greatly improve the play experience for a **broader age range of children**. Importantly, it will also **increase accessibility** and add much needed **seating and picnic areas**.

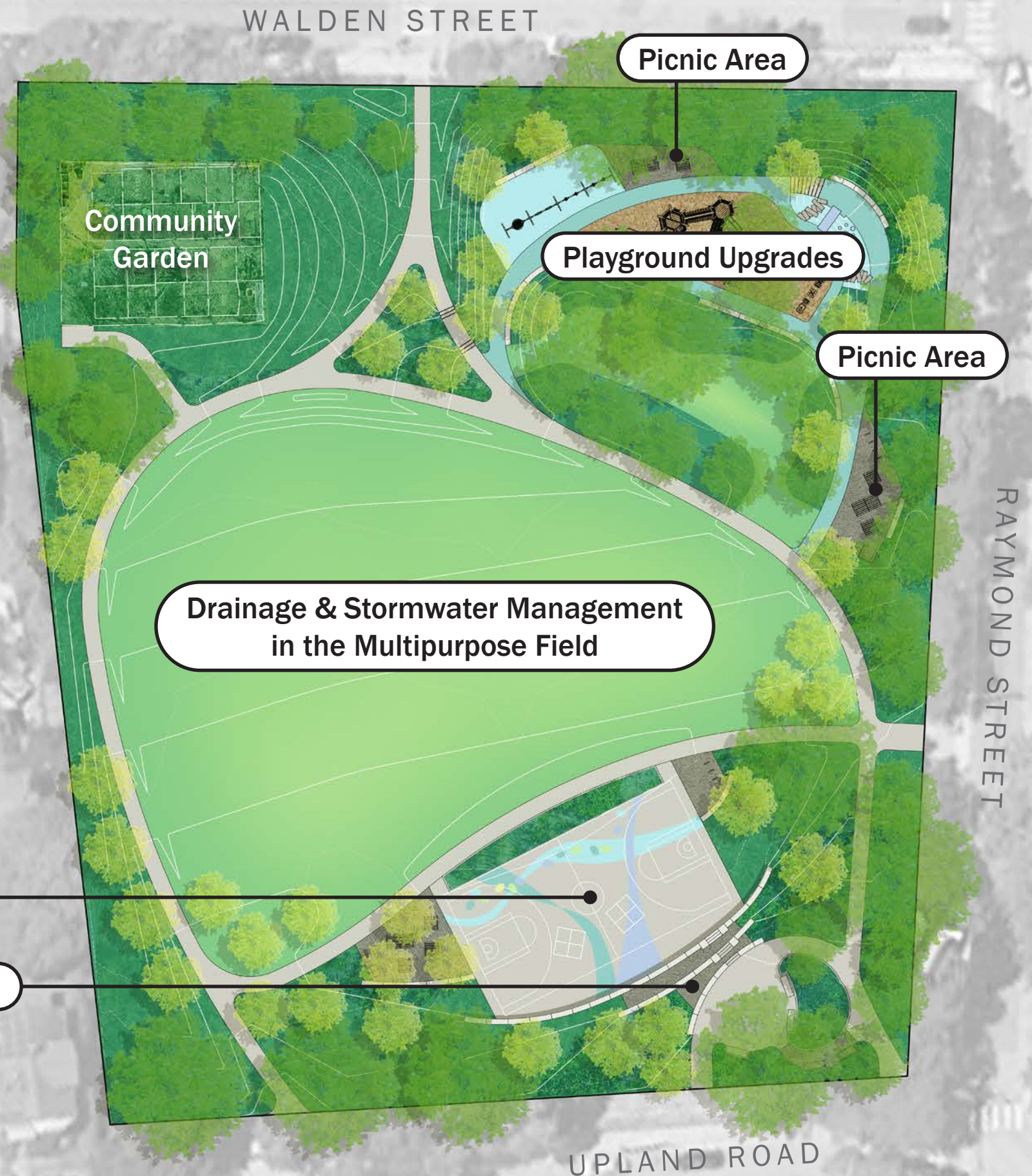
"I really love the open field and the shade - glad to see that in these plans!"



Existing Trees



New Trees



Expanded Multipurpose Court Space

Existing Entrance Seating and Garden Area with Views Across the Park

Terraced Seat Walls Made with Re-purposed Granite

View of Terraced Gathering Space from Multipurpose Court



Restore Existing Mound to Help
Protect Longevity of Mature Trees

Swings

Climbing Towers Provide
Risky & Challenging Play

Wooden Train

Accessible Play Mound with Places
to Slide, Climb, and Scramble

View of Playground from Picnic Area

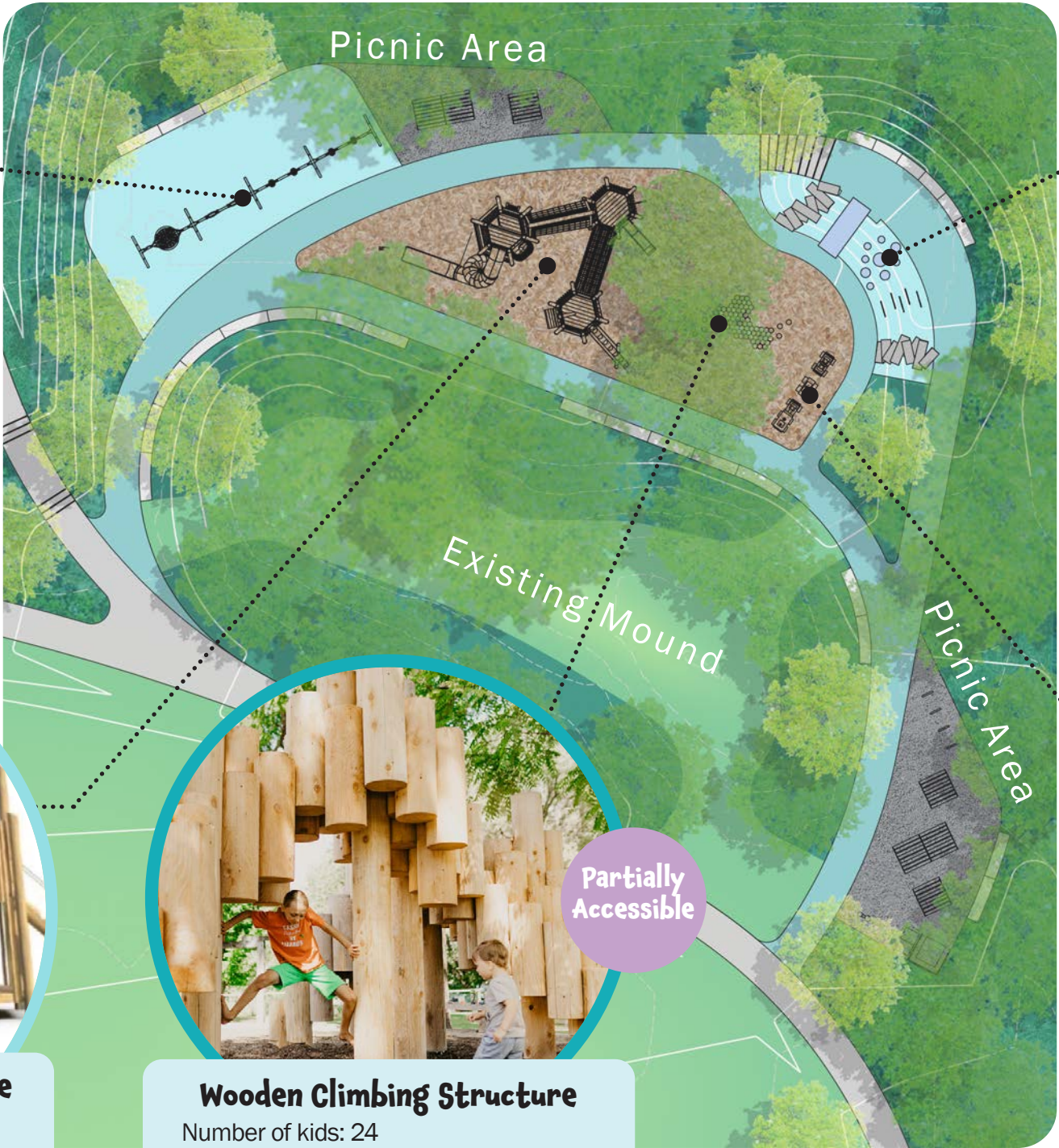


An Upgraded Playground Better for Kids of All Ages & Abilities



New Swings

Number of kids: 13
Ages: 1-12
Type of Play: swinging (solo & group)



Accessible Play Mound

Number of kids: 6-10
Ages: 2-12
Type of Play: sliding, climbing, balancing, exploration



Forest Climbing Tower with Slide

Number of kids: a lot!
Ages: 6-12
Type of Play: exploration, climbing, sliding



Wooden Climbing Structure

Number of kids: 24
Ages: 5-12
Type of Play: exploration, climbing, balancing



Wooden Train

Number of kids: 8
Ages: 2-5
Type of Play: exploration, climbing

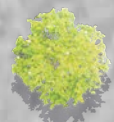
More Seating & Gathering Spaces

- There are **several new seating areas and picnic tables** clustered around the playground and the multipurpose court
- Much of the new seating, including the terraced seating area, will be built with **re-purposed granite blocks** from the existing wall around the basketball court

“Since Raymond Park serves so many communities, I recommend prioritizing gathering spaces and seating areas.”



Existing Trees



New Trees

Picnic Area

Terraced Seating Area



1% for Public Art at Raymond Park

- In October, the City of Cambridge convened a Public Art Selection Committee to pick an artist through the City's 1% for Art Ordinance.
- The Committee selected Julia Jamrozik and Coryn Kempster, Toronto-based designers whose artistic practice focuses on 'social infrastructures' which seek to build community by fostering playful interactions in physical space.
- Julia and Coryn have been engaged and will work with the design team to develop a public art piece for Raymond Park.
- Visit their website to learn more! www.ck-jj.com



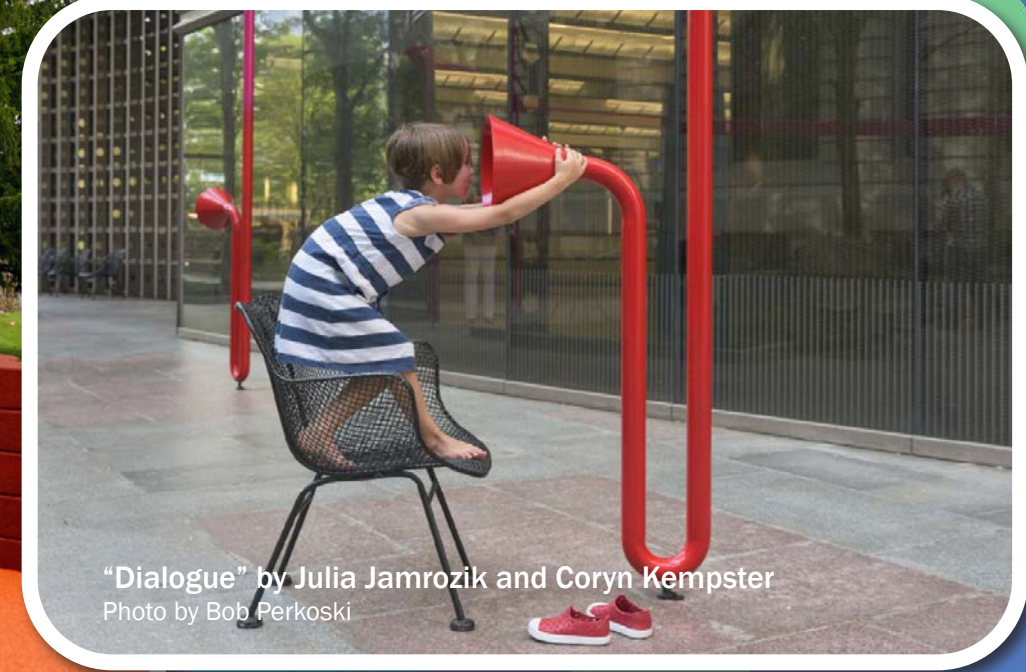
"Vertical Line Garden" by Julia Jamrozik and Coryn Kempster
Photo by Martin Bond



"Loopholes" by Julia Jamrozik and Coryn Kempster Photo by Onion Studios



"Nooks" by Julia Jamrozik and Coryn Kempster



"Dialogue" by Julia Jamrozik and Coryn Kempster
Photo by Bob Perkoski

A Respectfully Renewed Raymond Park is Coming Soon!

Construction is expected to begin in
Spring/Summer 2025

Come chat with us in the park to learn about upcoming
renovation plans and provide more feedback!



Tuesday, December 17th, 3:30-5:30pm

Thursday, December 19th, 8-10am



Can't make it to one of the events in the park?

Review the materials and provide feedback online! Use your phone camera to scan
the QR code or visit the project webpage at www.cambridgema.gov/RaymondPark

