



2025 **Town Gown Presentation** to the City of Cambridge

February 3, 2026

A scenic view of a park with autumn foliage, a body of water, and a city skyline in the background. The image is split into two horizontal panels. The top panel shows a close-up of trees with yellow and orange leaves, with a tall building visible in the background. The bottom panel shows a wider view of a park with a body of water, two people riding bicycles along a path, and a sailboat on the water.

Introduction

Glen Shor

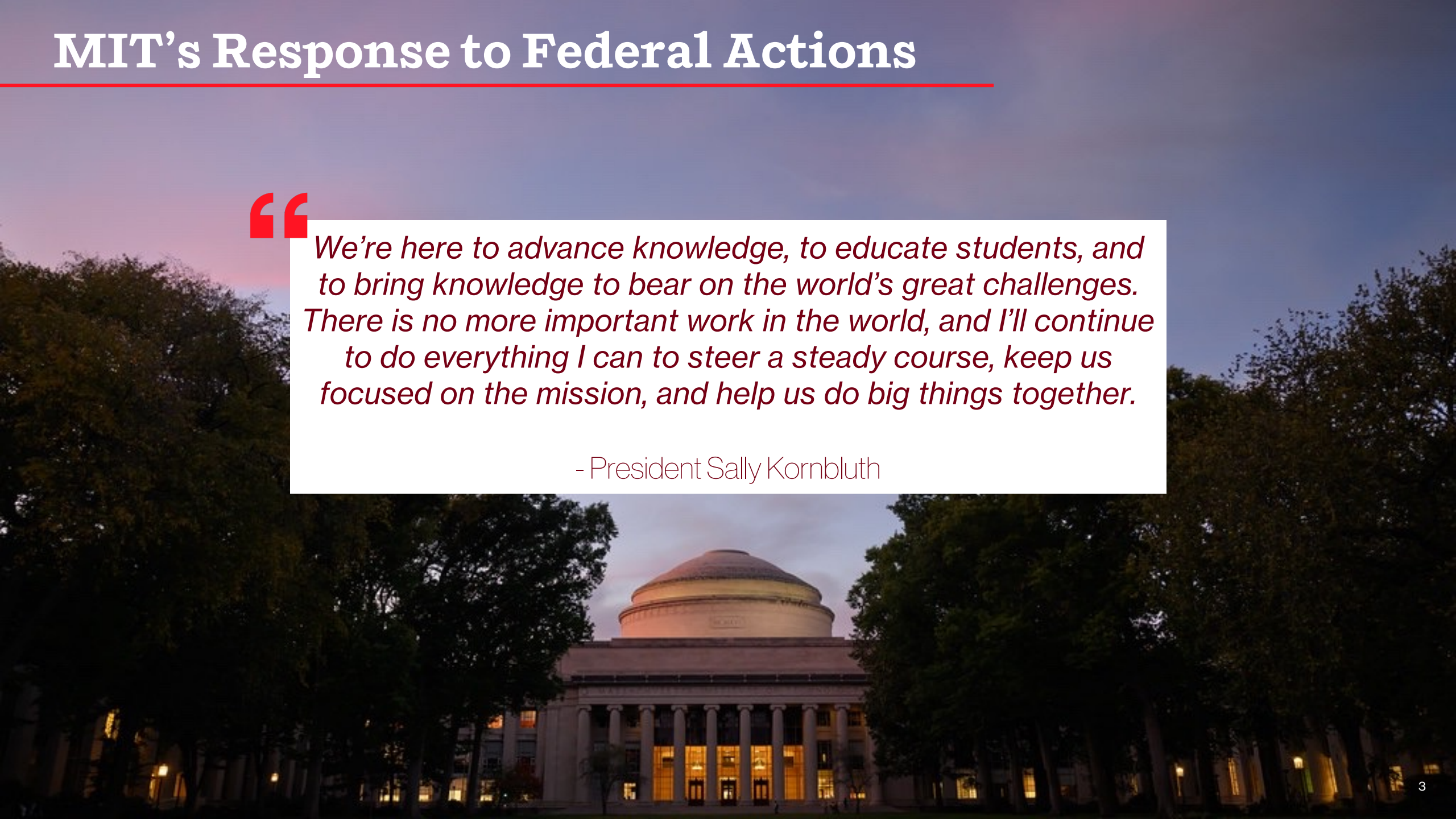
Executive Vice President and Treasurer

MIT's Response to Federal Actions

“

We're here to advance knowledge, to educate students, and to bring knowledge to bear on the world's great challenges. There is no more important work in the world, and I'll continue to do everything I can to steer a steady course, keep us focused on the mission, and help us do big things together.

- President Sally Kornbluth



Presidential Strategic Initiatives



- **MIT Generative AI Impact Consortium (MGAIC)**
- **MIT Health and Life Sciences (MIT HEALS)**
- **MIT Human Insight Collaborative (MITHIC)**
- **MIT Initiative for New Manufacturing (INM)**
- **MIT Quantum Initiative (QMIT)**
- **The Climate Project at MIT**

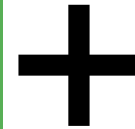
Spotlight on Our Work to Decarbonize MIT's Campus



**Generating heat
with electricity
from a greening
power grid**



**Distributing heat
through expanding
network of hot
water piping**



**Reducing energy
consumption in
our buildings**




Decarbonization, Sustainability, and Resiliency

Julie Newman, PhD

Director of Sustainability



Enabling Large-scale Renewable Energy Projects Through Partnerships



2025
Bowman Wind
North Dakota
208 Megawatts

2025
Big Elm Solar
Texas
200 Megawatts

2017
Summit Farms
Solar
North Carolina
60 Megawatts

Accelerating decarbonization of regional power grids

MIT Impact

~215,000 tons CO₂
avoided per year
1X MIT campus emissions

Consortium
Impact

~730,000 tons CO₂
avoided per year
3X MIT campus emissions

Expanding On-campus Solar

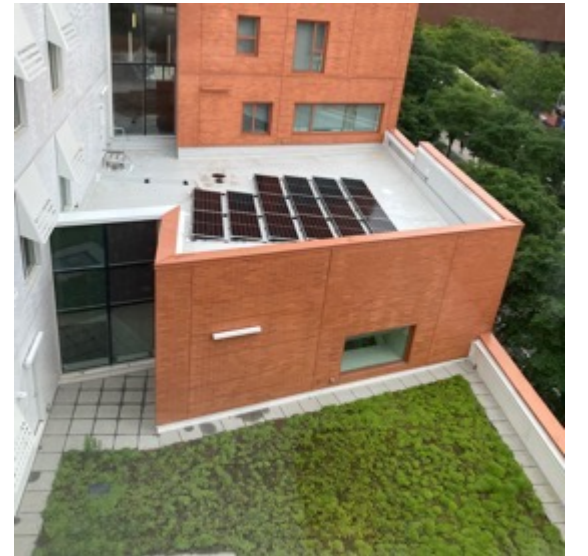
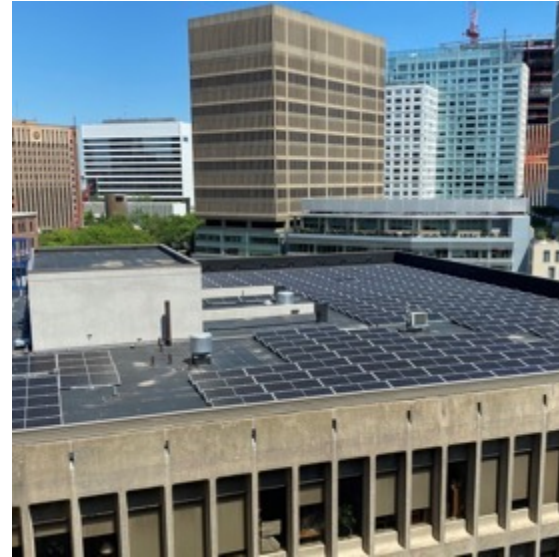
E53 Hermann

W20 Student Center

W46 New Vassar

W87-W88 Graduate Junction

W97 Theater Arts

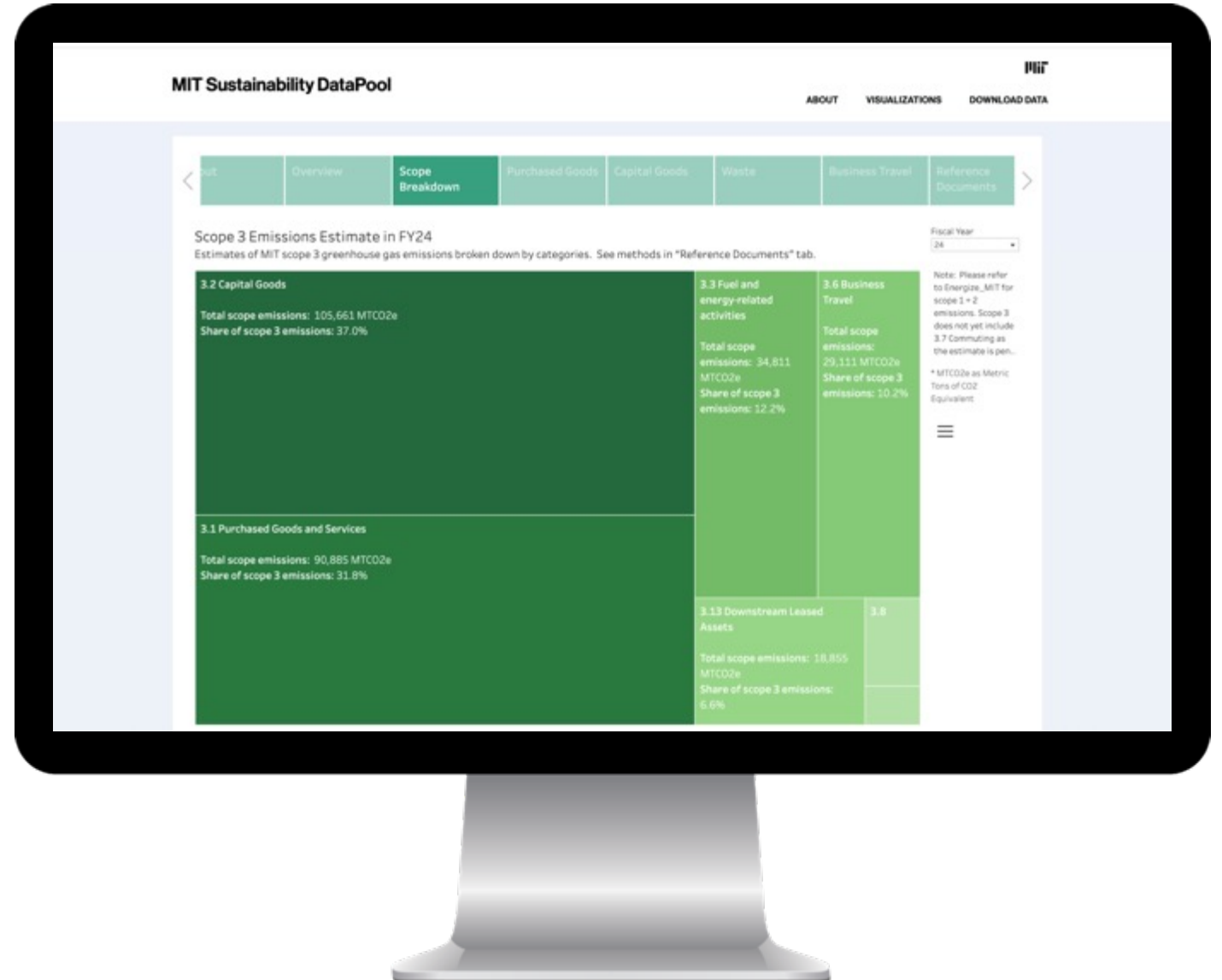


Accounting for Scope 3 Emissions

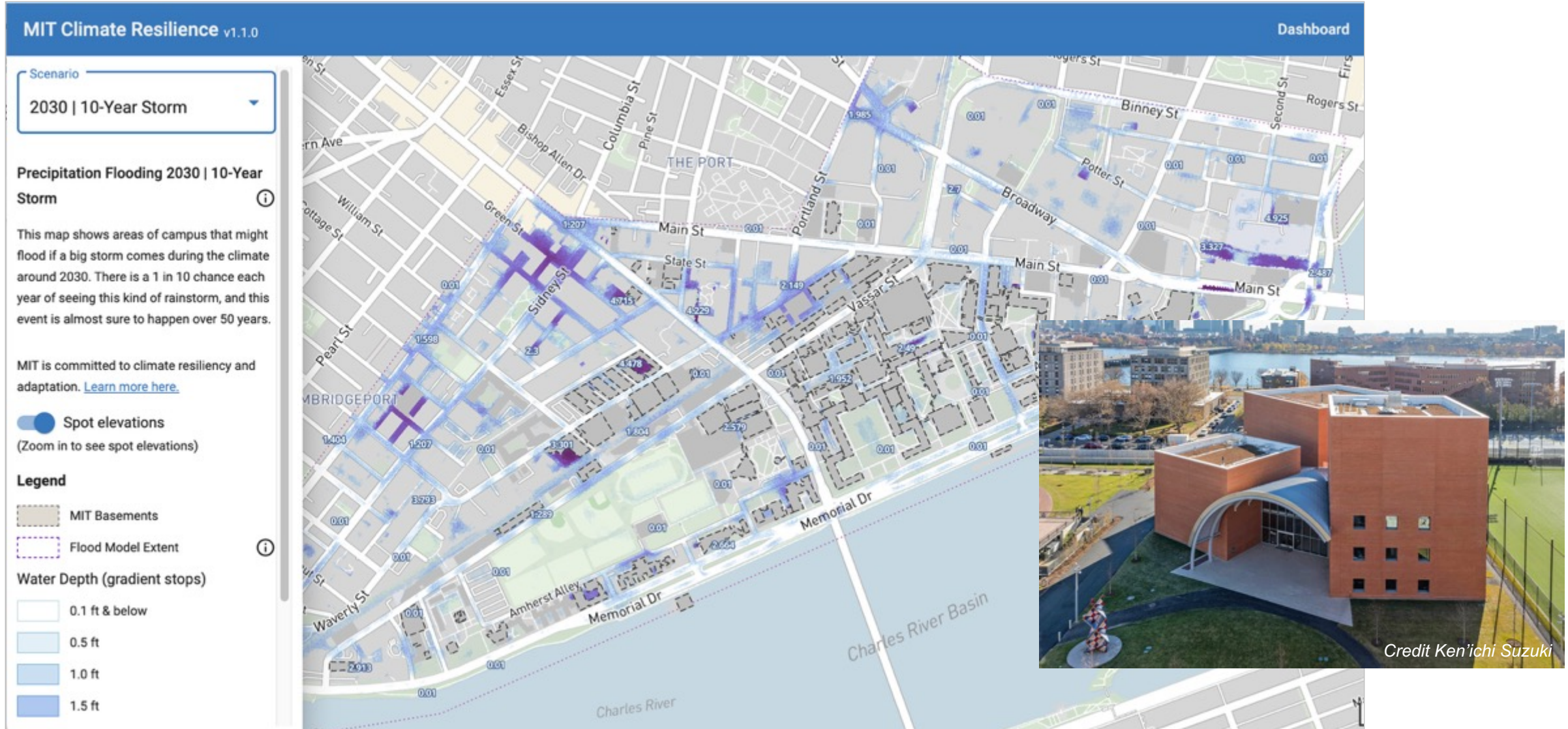
Inventory completed and updated annually

The Scope 3 Emissions Dashboard

- A climate action planning tool
- Enables MIT community to identify opportunities for reduction



Planning for Climate Resiliency



Protecting our Communities During Extreme Heat

Cool spots open to
Cambridge neighbors



A photograph of a campus scene. In the foreground, three students are sitting on a green lawn, facing away from the camera. They are surrounded by large, mature trees with thick trunks. In the middle ground, there is a low, curved concrete wall with a large bush of red flowers in the center. Another student is visible sitting on the left side of the wall. The background shows more trees and a paved path.

Academic Projects

Joe Higgins

Vice President for Campus Services and
Stewardship

Student Life

East Campus Undergraduate Residence (62 & 64)

Opened August 2025
Architect: William Rawn Associates



Courtesy William Rawn Associates



Courtesy Consigli

Graduate Junction (W87-W88)

Opened August 2024
Architect: Kieran Timberlake; Developer: ACC



Courtesy Kieran Timberlake

McCormick Hall (W4)

In design
Architect: Kieran Timberlake



Courtesy Kiernan Timberlake

Academic (In Construction)

Metropolitan Warehouse (W41)

Target 2026

Architect: Diller Scofidio + Renfro



Credit Bob O'Connor



Courtesy DSR

Open Space Stewardship

Eastman and McDermott Courts

In design



Tree Canopy Stewardship





Commercial Projects

Michael Owu

Vice President, Real Estate

Development Projects

75 Broadway & Kendall Common Infrastructure



75 Broadway

Courtesy Elkus Manfredi Architects



75 Broadway Groundbreaking

Credit Brian Malloy Photo



Broadway Stormwater Infrastructure

Courtesy JMA

Retail Update

Eastern Edge Food Hall



Retail Update



Darling

Credit Andrew Burke/Boston Globe



More Fun

Courtesy More Fun

Delivering on Our Commitments



Credit Steve Dunwell Photography



Courtesy MITIMCo



Credit Ken Richardson Photography



Credit Steve Dunwell Photography

- ✓ Street-level Activation
- ✓ Local Retailers
- ✓ Neighborhood Services
- ✓ Grocery Store

- ✓ Pharmacy
- ✓ Quick-serve Retail with Diversity of Price Points
- ✓ Fresh Food Options

MIT in the Community

Sarah Gallop

Director, Office of Government and
Community Relations



MIT and Cambridge Public Schools



Courtesy PHA

Cambridge Community Events



Courtesy MIT Open Space Programming



Courtesy MIT Open Space Programming



Courtesy MIT Open Space Programming



Credit Michael J. Clarke

Cambridge Economic Impact



Courtesy the Job Connector by MIT



Courtesy the Job Connector by MIT

